



HAL
open science

Mechanical and structural characterization of nonsintered and sintered steel wools by x-ray tomography: Description of the techniques and validation on virtual materials

J.P. Masse, C. Barbier, L. Salvo, Y. Brechet, O. Bouaziz, D. Bouvard

► To cite this version:

J.P. Masse, C. Barbier, L. Salvo, Y. Brechet, O. Bouaziz, et al.. Mechanical and structural characterization of nonsintered and sintered steel wools by x-ray tomography: Description of the techniques and validation on virtual materials. *Journal of Materials Research*, 2013, 28 (20), pp.2852-2860. 10.1557/jmr.2013.280 . hal-00935039

HAL Id: hal-00935039

<https://hal.science/hal-00935039>

Submitted on 24 Jan 2018

HAL is a multi-disciplinary open access archive for the deposit and dissemination of scientific research documents, whether they are published or not. The documents may come from teaching and research institutions in France or abroad, or from public or private research centers.

L'archive ouverte pluridisciplinaire **HAL**, est destinée au dépôt et à la diffusion de documents scientifiques de niveau recherche, publiés ou non, émanant des établissements d'enseignement et de recherche français ou étrangers, des laboratoires publics ou privés.

Mechanical and structural characterization of nonsintered and sintered steel wools by x-ray tomography: Description of the techniques and validation on virtual materials

J.P. Masse^{a)}

ArcelorMittal Research, Voie Romaine, 57283 Maizières Les Metz, France

C. Barbier

LAMCOS, INSA Lyon 18-20, rue des Sciences F69621 Villeurbanne Cédex, France

L. Salvo and Y. Bréchet

SIMAP Institut National Polytechnique de Grenoble, 38402 Saint Martin d'Hères, France

O. Bouaziz

ArcelorMittal Research, Voie Romaine, 57283 Maizières Les Metz, France; and Centre des Matériaux/Mines Paris, Paristech, CNRS-UMR7633, 91003, Evry cedex, France

D. Bouvard

SIMAP Institut National Polytechnique de Grenoble, 38402 Saint Martin d'Hères, France

Properties of entangled materials, made of fibers, depend on the number and the nature of contacts between fibers and fibers orientation. Nonsintered and sintered steel wools have been characterized by x-ray tomography to extract structural information such as fibers orientation and number of contacts before and during compression. Image analysis techniques were developed on tomography images and validated on virtual materials, generated and deformed by numerical simulation based on molecular dynamic equations. The structural parameters measured during the structural characterization were finally used to link the structure of the studied material with the measured mechanical properties. To do this link, an analytical model usually used for this kind of material was modified to describe the evolution of mechanical properties in compression.

I. INTRODUCTION

Entangled materials, made of fibers, find their major applications in thermal insulation, mechanical reinforcement, and filtration. With regard to their low density and discrete architecture, this kind of materials is close to cellular materials. The current state of knowledge about metal foams is well developed from both experimental and modeling viewpoints.^{1,2} Comparatively entangled materials have been much less investigated. The knowledge of the macroscopic behavior of these materials reflects their potential applications. Compression experiments have been performed on several types of entangled materials: natural (such as animal wool and human hair) and synthetic (such as stainless steel, carbon, glass fibers, and carbon nanotubes).^{3,4} Thermal and electrical conductivity measurements have been carried out.⁵⁻⁷ Damping properties have also been investigated⁸ as entangled materials exhibit high potential for damping thanks to the hysteresis in loading-unloading path (e.g., in compression).

Process to make entangled materials could be simple, and the use of the kind of materials has recently been

focused as a core material for sandwich structure.⁹⁻¹⁴ Indeed, they present an alternative to foams (metallic or polymeric). For certain metals (e.g., steel), foams are difficult to process because of high melting point, whereas the processing of fibers from the solid state is simpler. In the case of sandwich structure based on steel in automotive application for weldability issue, it is preferred to choose steel as the constitutive material of the core.¹⁵ From the previous reason, entangled materials made of steel fibers appear the best solution. In this context, increasing mechanical properties of entangled materials by the creation of permanent contacts between fibers is a possible solution. This can be done by several methods. In the literature, at least two means to create these contacts are studied: sintering, used for metallic fibers¹⁶⁻¹⁸ and spraying of epoxy glue, used for glass or carbon fibers.¹⁹ These studies show clearly the reinforcement in compression due to permanent contacts. In the case of nonpermanent contacts (nonbonded or sintered fibers), only densification is observed. When sufficient density of permanent contacts is created, behavior becomes similar to that of foams. Models developed on compression of entangled materials focused essentially on densification, such as the pioneered work of van Wyk²⁰ and completed by Toll²¹ predicting a power law relationship between compression stress and relative density of materials. The

^{a)}Address all correspondence to this author.
e-mail: jean-philippe.masse@arcelormittal.com

exponent of this power law depends on the orientation of the fibers and is equal to 3 in the case of three-dimensional (3D) random array of fibers. These analytical models have been validated thanks to finite element analyses²² and also by adapted molecular dynamic methods.²³ In both cases, it is possible to take into account the friction between fibers that is important for understanding of the hysteresis during unloading–loading path. An analytical approach was developed to predict the first step of unloading taking into account destroyed contacts during unloading.²⁴

The classical model to explain the compression curve is the van Wyk–Toll’s approach, which is based on the assumption that fibers bend during loading and large aspect ratio for the fibers. Considering an elementary cell composed of one fiber between two contacts deformed in bending, van Wyk and then Toll showed that the compression stress is expressed as

$$\sigma = kE_f(\rho^n - \rho_0^n) \quad , \quad (1)$$

with ρ and ρ_0 the relative density and the initial relative density, respectively, E_f the Young’s modulus of the fibers, and k a multiplicative factor depending on the loading direction of the fibers. The exponent n is equal to 3 for random 3D arrays of fibers and 5 for two-dimensional (2D) random arrays. This model also provides structural information on the fibers arrangement, such as the number of contacts per unit volume (N_{cv}) and can take into account various fiber orientations via an orientation function f ²⁵

$$N_{cv} = \frac{16f}{\pi^2 d_f^3} \rho^2 \quad , \quad (2)$$

where d_f is the diameter of the fibers. This model is known as the “tube” model and is developed for straight rigid fibers²⁵:

$$f = \frac{1}{N_f^2} \sum_{\alpha} \sum_{\beta} \|p_{\alpha} \times p_{\beta}\| \quad . \quad (3)$$

With N_f the number of fibers and p the director vector of the fibers. f is equal to $\pi/4$ for a random 3D distribution, $2/\pi$ for a random 2D distribution and 0 for aligned fibers.

In the literature, a number of studies deal with structural characterization of arrays of fibers. Basic characterizations are based on microscopic observations [optical, scanning electron microscopy (SEM), or confocal]. It is relevant in the case of short and straight fibers and the orientation can be determined.^{26,27} The same technique is used for steel felt.²⁸ In the case of long fibers (more deformable due to lower rigidity), it is more difficult to use previous techniques, and 3D images from x-ray tomography observations are a powerful alternative. The 3D image technique developed by Lux et al.⁷ consists in comparing fiber orientations with an orientation of reference. In the same study, images

undergo skeletonization. In shape analysis, a skeleton (or topological skeleton) of a shape is a thin (one-dimensional) version of that shape that is equidistant to its boundaries. Algorithms to build this skeleton can be found in different Refs. 29 and 30. In Ref. 7, the skeleton is extracted from 3D images, and contacts are given by assuming that a contact point is a point of the skeleton that has 3 neighbors. In Ref. 31, a simple distance criterion is applied to obtain an order of magnitude of the number of contacts (the usual method of watershed is not applied in general for long fibers entanglement because of the nonregularity of the fibers’ shape).

The analysis of the mechanical model shows that the relevant parameters to characterize and to understand the mechanical behavior apart from the diameter of fibers are the orientation of the fibers and the number of contacts. It is the aim of this paper to present a quantitative experimental investigation of these characteristics and their evolution during compressive loading and to use these characterizations to provide a physically based description of the compression curve.

II. MATERIALS AND METHODS

A. Materials

In this paper, commercial stainless steel wool (AISI 434) is studied with a mean relative density of 2.5%.

A preliminary study of the steel wool showed that its spatial heterogeneity, on the scale of centimeters, allows extracting the sample with a relative density ranging from 1.5% to 3.5% on the square sample of 30 by 30 mm.³ The fibers are irregular in shape and length: the mean equivalent diameter is 80 μm and the mean length is 5.6 ± 2.5 cm. The aspect ratio is high, more than 600. The fabrication process of the fibers is the scraping of an initial circular wire. This explains the observed irregular shape.

To change the nature of contacts and improve the mechanical properties of steel wools, sintered steel wools were also studied. Sintered steel wools were heated up at 1300 and 1400 $^{\circ}\text{C}$ for times ranging from 1 to 4 h under reductive (N_2 with 5% H_2) atmosphere. Relative densities of obtained samples are ranging between 4% and 12% depending on the duration and the temperature of sintering. SEM images of contacts obtained after sintering at 1400 $^{\circ}\text{C}$ during 4 h are shown in Fig. 1.

B. X-ray tomography and in situ testing

To perform the structural characterization on nonsintered and sintered steel wools, x-ray tomography observations were performed at the ESRF (European Synchrotron Radiation Facility, ID 19, Grenoble) and MATEIS lab (INSA Lyon). An in situ test was also performed on nonsintered steel wool with a relative density of 3.5% at the ESRF. The size of the volume was 11 by 11 by 5 mm height, with a voxel size of 8 μm . The in situ testing device

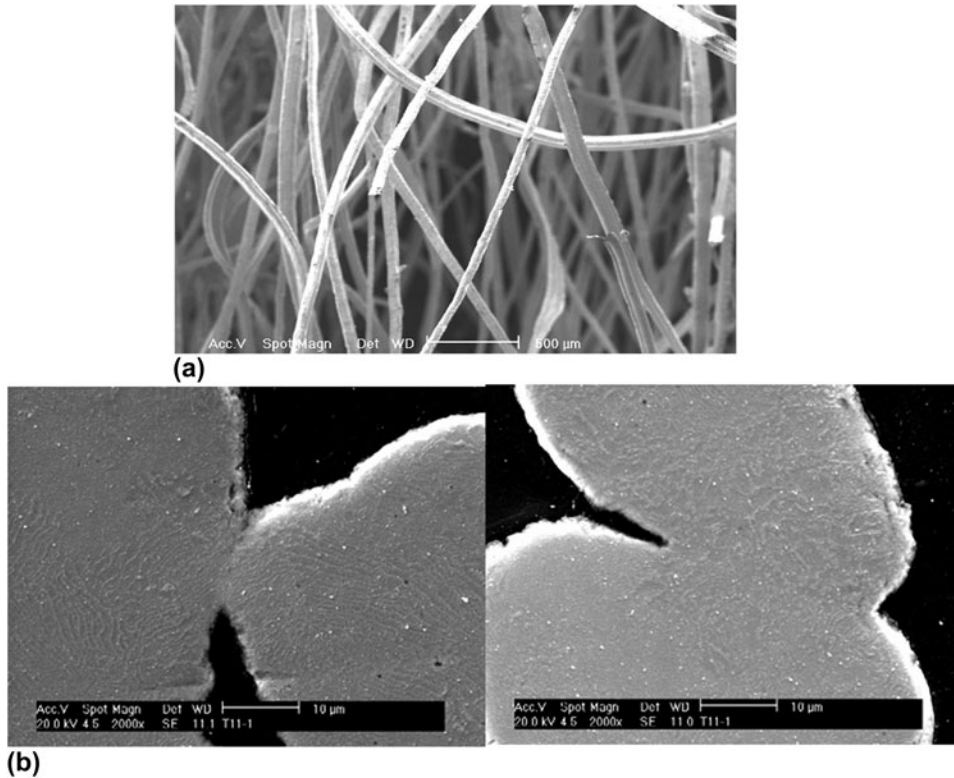


FIG. 1. SEM pictures of nonsintered steel wool with a relative density of 1.5% (a) and of sintered steel wool at 1400 °C during 4 h (b).

is described in Ref. 32. Two in situ tests were also performed on sintered steel wools at MATEIS lab. In situ interrupted analyses were performed following different steps: first load is applied, second load is stopped, then the scan is done, and afterward the sample is reloaded. For the nonsintered steel wool, 8 deformations steps were analyzed between a relative density of 1.8% and 13.4%. For the sintered steel wools, samples sintered at 1400 °C during 1 h and 1300 °C during 4 h were analyzed with 12 scans between 6% and 12% (a compression range of 0.7) and 5 scans between 8% and 25% (a compression range of 1.14), respectively. The initial densities of the analyzed samples are, respectively, 6% and 8%. Only one sample was studied for each condition, and for each samples, one scan was performed before deformation. An example of 3D visualization is shown in Fig. 2 for three different densities obtained by compression with the same sample.

C. Structural characterization

X-ray tomography raw gray level images are easily segmented to separate fibers and porosity. After segmentation, it is directly possible to estimate the relative density by calculating the ratio of white voxels over the total number of voxels, which is in agreement with the values obtained by weighting the samples.

For the structural characterization of steel wools and especially for the key issue of contacts quantification, we used the skeleton of the fibers array. The skeleton can be

obtained with commercial software Avizo 5³³ as shown in Fig. 3 for nonsintered steel wool. From the skeleton, it is possible to obtain the number of contacts and the orientation of the fibers.

1. Contact detection

Figure 3(b) shows an example of contacts and the resulting skeleton. It shows that one contact point is represented on the skeleton as one segment. To count the number of contacts, it was chosen to define a contact as a segment whose length is lower than the diameter of a fiber. In certain cases, contact length may be large and thus could be represented by several segments. In this case, to determine whether it is a contact or not a condition on the distance between contacts has to be used: if two contacts are separated by a distance lower than a determined length (taken as approximatively two fibers diameter), only one segment is counted.

2. Orientation analysis

All the coordinates, extremities, and total length of the segments are known. The contact segments are removed for the analysis. Consequently, fibers orientation can be evaluated. Then the orientation of segment between fibers is calculated. In the case of straight fibers, the orientations of the fibers and the segments between contacts are the same because these segments are collinear for the same fiber. In the case of nonstraight fibers, the orientation of the segments

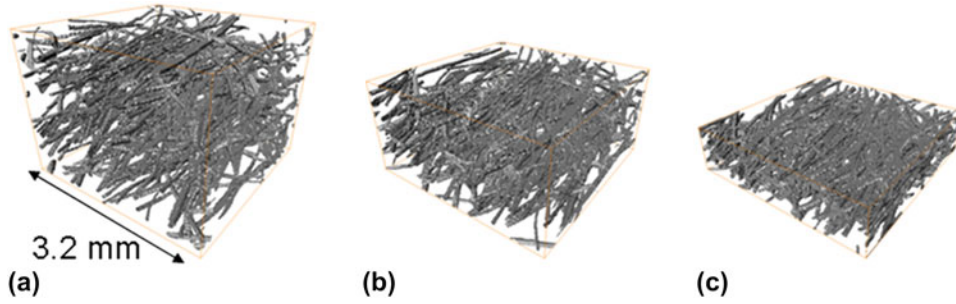


FIG. 2. 3D visualizations from x-ray tomography of nonsintered steel wool observed during compression at different relative densities: 3.8% (a), 5.3%, (b), and 9.0% (c).

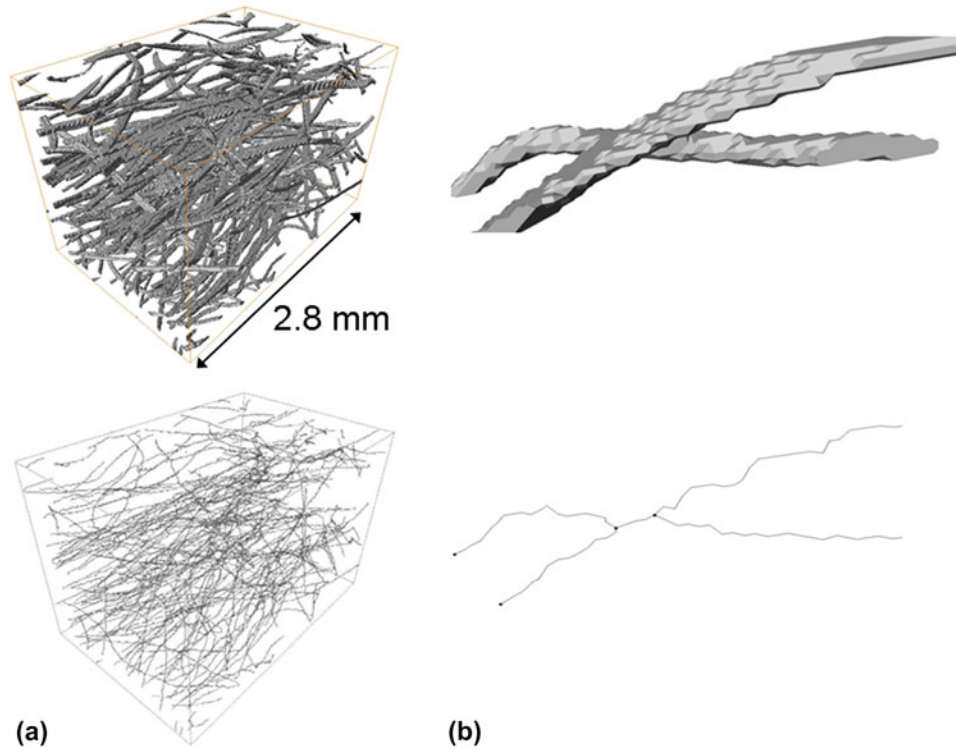


FIG. 3. 3D visualization from x-ray tomography and the resulting skeleton for a relative density of 2.7% (a) and focus on contact point (b).

between contacts seems to be more relevant because the tube model is based on the assumption of straight fibers.

III. VALIDATION ON VIRTUAL MATERIALS

A. Virtual materials generation

To compare and validate the characterization technique (number of contacts between fibers and orientation) developed in this paper, virtual materials were created using numerical simulation based on molecular dynamic equations. This program is described in Ref. 23 These materials are not expected to describe the real materials under investigation but to provide a “best-case scenario” for our skeletonization procedure and the evaluation of number of contacts per unit volume and orientation of the

fibers. Three kinds of materials were realized: 3D random distribution [Fig. 4(a)], 2D random distribution [Fig. 4(b)], and aligned fibers oriented at $\pm 20^\circ$ around one direction [Fig. 4(c)]. With numerical calculations, it is possible to follow the relative density, number of contacts, and orientation of the fibers during isostatic compression. From numerical coordinates of each fiber, 3D numerical images are generated. To be close to images of real materials, the diameter of the fibers is fixed to 7 pixels, and the relative density is close to the relative density of the studied real materials.

B. Validation of the techniques

Figure 5(a) shows the measured number of contacts per fibers as a function of the numerical number of contacts

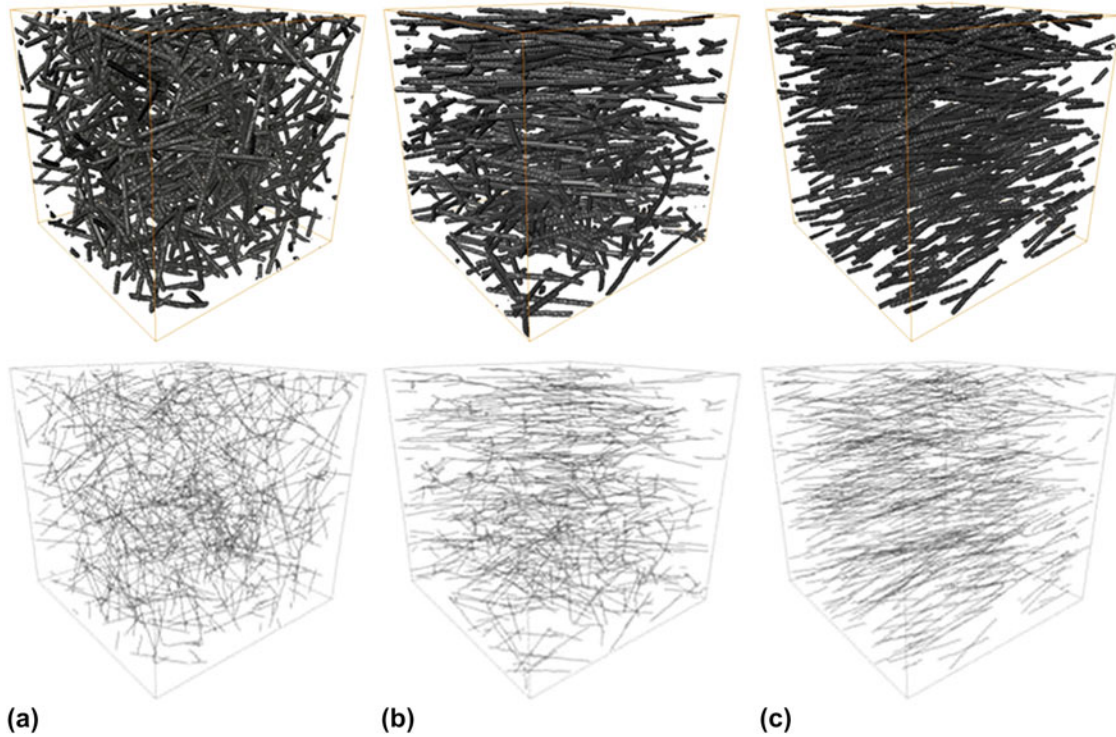


FIG. 4. 3D visualizations of virtual materials and resulting skeleton for 3D random distribution (a), 2D random distribution (b), oriented fibers of $\pm 20^\circ$ around one direction (c).

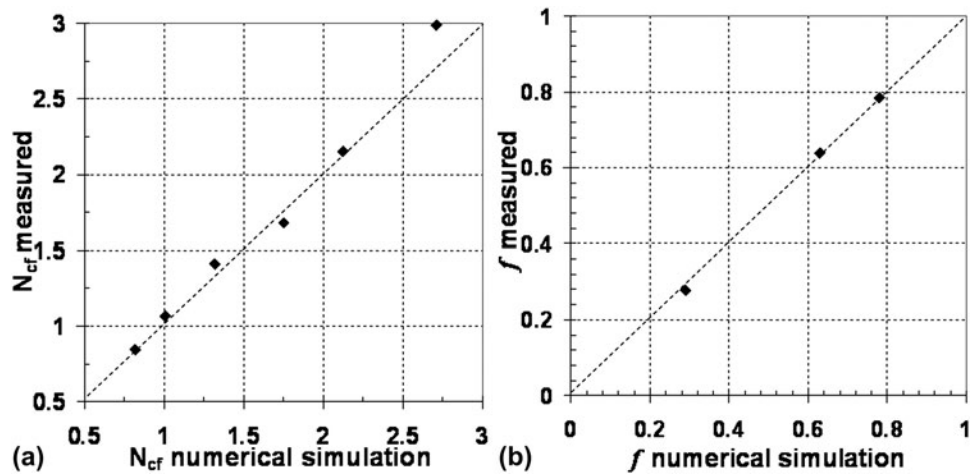


FIG. 5. Comparison measured and calculated structural parameters: number of contacts per fibers (a) orientation function f (b).

per fibers in the case of 3D random distribution, whereas Fig. 5(b) shows the measured value of f [Eq. (3)] as a function of the numerical value of f . A good correlation between image analysis measurement and expected numerical results is observed: these results thus validate our 3D quantification method.

IV. REAL STEEL WOOLS CHARACTERIZATION

Once characterization techniques are validated on virtual materials, both for contact identification and

orientation quantification, they can be safely applied to the steel wools. Results of in situ tests on nonsintered and sintered steel wools will be presented.

In situ tests permit to observe the evolution of the structural parameters when relative density is varying by compression. Figure 6(a) shows the evolution of f [Eq. (2)] during compression for a nonsintered steel wool with initial relative density of 3%, and Figs. 6(c) and 6(e) present two sintered steel wools at 1300 °C during 4 h and 1400 °C during 1 h. Figures 6(b), 6(d), and 6(f) show the corresponding number of contacts for each steel wool.

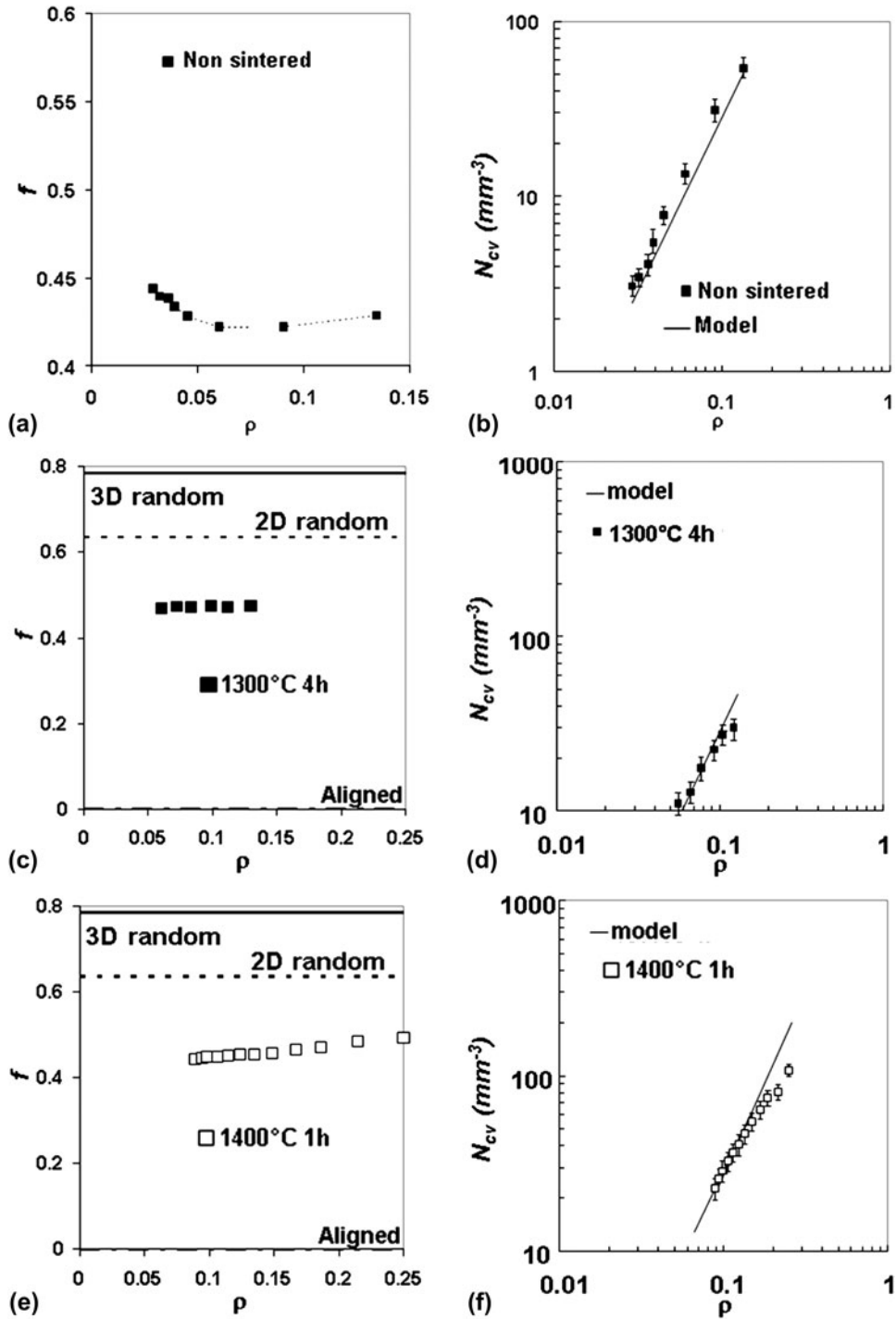


FIG. 6. Structural parameters of nonsintered (a, b) and sintered (c, d, e, f) steel wools during compression: number of contacts per unit volume (mm^{-3}) compared with values for tube model (b, d, f), values of f compared with values for characteristics orientations (a, c, e).

In these figures, the number of contacts calculated with the tube model is plotted as a function of the relative density during compression using associated value of f . First of all the number of contacts is well predicted by the tube model for nonsintered steel wool. Concerning the sintered steel wools [Figs. 6(d) and 6(f)], the model predicts well the

number of contacts for relative density less than 10–12% but overestimates the number of contacts for larger relative densities. This deviation may be explained by the fact that at high density, it is more and more difficult to create new contacts under compression and the steel wool should be seen as foam for which the number of contacts is constant.

It is, however, possible to describe the number of contacts per unit volume as a power law of density in the range of 10–20% but with an exponent lower than the theoretical one (2), close to 1.5. A deviation of the tube model is also reported in Ref. 34 where fiber orientation is clearly along the axis perpendicular to the compression axis.

It is possible to summarize the results obtained concerning the number of contacts per unit volume as shown in Fig. 7. The tube model is valid for relative density in between 3% and 10%, and therefore N_{cv} is proportional to ρ^2 . Below 3%, it is possible to describe N_{cv} by a power law again, but with a lower exponent equal to 1.5 and between 4% and 12%, it is the same. Therefore, the number of contacts per unit of volume is described by

$$N_{cv} \propto \rho^\beta \quad (4)$$

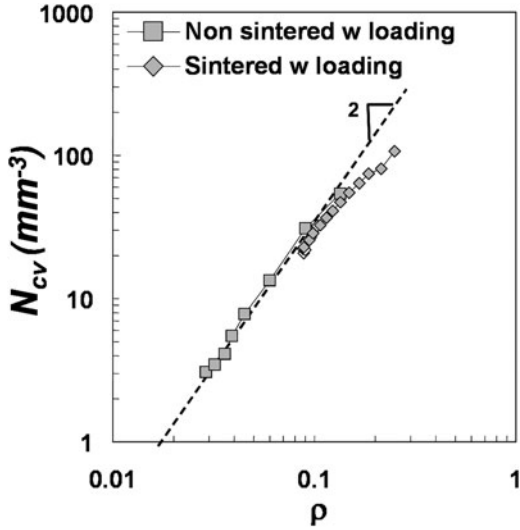


FIG. 7. Number of contacts per unit volume (mm^{-3}) during loading for nonsintered and sintered steel wools.

V. INFLUENCE OF NUMBER OF CONTACTS ON COMPRESSION TESTS

Results of compression tests on sintered and non-sintered steel wools are presented in Refs. 3 and 17. Value of measured exponents [see Eq. (1)] for fitting van Wyk–Toll approach are summarized in Fig. 8 for both non-sintered and sintered steel wools as a function of the initial density of the steel wool before compression. As it can be seen, the exponent n is varying between 3 and 4.5 for the nonsintered steel wool, whereas for the sintered steel wool, it can be considered as constant and nearly equal to 3.

With the conclusion of the work on structural characterization, it is now possible to explain the value of the exponent. For that, the van Wyk–Toll approach has to be detailed. In this model, it is assumed that the fibers are straight and disposed homogeneously into the material, and that they are loaded in bending during compression. From particular assumption, the stress (σ) for the uniaxial compression can be written as the product of the number of deformation unit by their height and by the force applied on them.

$$\sigma = \eta \bar{h} p \quad (5)$$

with η the numbers of deformation unit per unit of volume, h the height of the deformation unit, and p the force applied on the deformation unit. The number of deformation unit is proportional to the number of contacts per unit of volume (N_{cv}), and the force p is the bending force considering that the span of the beam is equal to the distance between contacts (λ). Taken into account these facts, the stress can be expressed as follows (with ρ the relative density during compression):

$$\sigma \propto \int_0^p \frac{N_{cv} h^2}{\rho \frac{\lambda^3}{E_f d^4}} d\rho \quad (6)$$

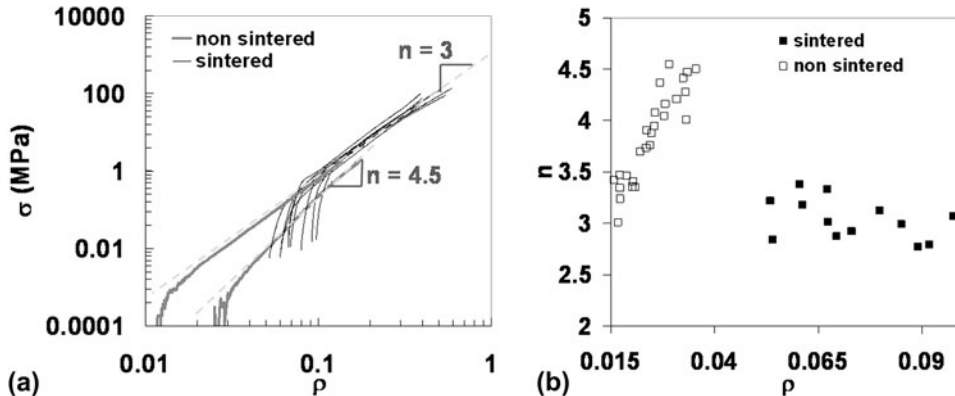


FIG. 8. (a) Mechanical compression curves for nonsintered and sintered steel wools for different relative densities before compression. (b) Values of exponent of van Wyk–Toll model experimentally determined for nonsintered and sintered steel wools as a function of the initial density before compression.

The height of the deformation unit h is different for 2D and 3D random materials (Fig. 9). In the first case, it is proportional to the distance between contacts, which is inversely proportional to the relative density. In the second case, it is proportional to the diameter of the fibers. By integrating Eq. (6), Eq. (1) is found with n equal to 3 for 3D random distribution and equal to 5 for 2D random distribution.

In the particular case of the studied steel wools, as the orientation of fibers is close to 2D and aligned fibers, the height of the deformation unit is the fibers diameter, and the number of contacts per unit of volume is taken as expressed in Eq. (4). For the distance between contacts, it is defined as follows:

$$\lambda = \frac{l_f}{N_{cf}} \quad , \quad (7)$$

where N_{cf} is the number of contacts per fibers and l_f is the fibers length. By definition, N_{cv} is the product of the number of contacts per fibers divided by two (each contact is linked to two fibers) by the number of fibers per unit volume, which is simply expressed as:

$$N_{cv} = N_{fv} \frac{N_{cf}}{2} \quad , \quad (8)$$

with the number of fibers per unit of volume expressed as:

$$N_{fv} = \frac{4}{\pi d^2 l_f} \rho \quad . \quad (9)$$

Finally, the number of contacts per fibers can be expressed as

$$N_{cf} = \frac{2N_{cv}}{N_{fv}} \quad . \quad (10)$$

Then λ is expressed as:

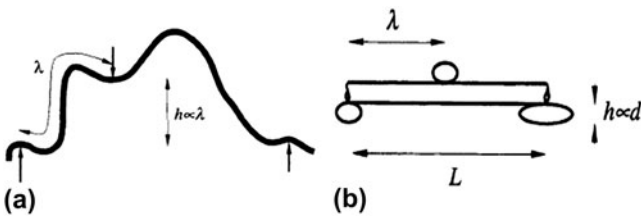


FIG. 9. Schematic representation of deformation unit used in Toll's model for 3D distribution (a) and 2D distribution (b), from Ref. 20.

$$\lambda \propto \rho^{1-\beta} \quad . \quad (11)$$

Integration of Eq. (6) leads to Eq. (1) with an exponent depending on β as:

$$n = 4\beta - 3 \quad . \quad (12)$$

Experimental and theoretical values of n are compared in Table I. The analysis leads to a good agreement between mechanical experiments and modified van Wyk–Toll approach thanks to structural characterization.

VI. CONCLUSIONS

In this study, three main points were followed. The first one was to develop and validate a method suitable to characterize the structure of entangled materials made of fibers. The aimed parameters are the orientation of the fibers and the number of contacts. The used technique was the skeletonization of the x-ray tomography images. First assessment of the method was performed on virtual materials to critically assess the possibility to use such a technique in the determination of the number of contacts and to look at the calibration needs. The minimal length of a contact and the critical distance between contacts were determined in the calibration step. Very good agreement between results obtained with this method and the numerical simulations were observed.

The second point was to characterize structural parameters for nonsintered and sintered steel wools with the developed method. The determined number of contacts was compared with the analytical model (tube model). This comparison revealed that the tube model can be used up to a relative density of 10% for both sintered and nonsintered steel wools. Beyond this relative density, the exponent of the power law for the number of contacts is closer to 1.5 than the expected value of 2 expected from the tube model.

The third point was to explain the mechanical behavior of steel wools. The exponent of the power law relationship between stress and relative density is ranging from 3 to 5 and increasing with the initial relative density. The prediction of the van Wyk–Toll's approach is that the exponent is equal to 3 for 3D orientation and to 5 for 2D orientation. But the structural characterization showed that fibers orientation does not evolve when the initial relative density increases and is close to a 2D orientation. The analysis of the number of contacts exhibits that the exponent of the power law describing the number of

TABLE I. Comparison of experimental and theoretical exponent n of Toll's model for nonsintered and sintered steel wools.

Materials	Relative density	β	Theoretical n	Experimental n
Nonsintered steel wool	$1.5\% < \rho < 3.5\%$	$1.5 < \beta < 2$	$3 < n < 5$	$3.2 < n < 4.5$
Sintered steel wool	$4\% < \rho < 12\%$	1.5	3	3

contacts as a function of the relative density evolves when the initial relative density increases. This exponent varies from 2 to 1.5. By taking into account the results of the structural characterization into the integration of van Wyk–Toll’s approach, it was possible to explain the variation of the observed exponent.

ACKNOWLEDGMENT

The authors sincerely acknowledge Dr. Jérôme Adrien and Dr. Eric Maire for the possibility to perform x-ray tomography at MATEIS laboratory (INSA Lyon). Elodie Boller is also gratefully acknowledged for the help on ID19 at the ESRF.

REFERENCES

- M.F. Ashby, A.G. Evans, N.A. Fleck, L.J. Gibson, J.W. Hutchinson, and H.N.G. Wadley: *Metal Foams: A Design Guide* (Butterworth–Heinemann, Boston, MA, 2000).
- L.J. Gibson and M.F. Ashby: *Cellular Solids: Structure and Properties*, 2nd ed. (Cambridge University Press, Cambridge, 1999).
- J.P. Masse, L. Salvo, D. Rodney, Y. Bréchet, and O. Bouaziz: Influence of relative density on the architecture and mechanical behaviour of a steel metallic wool. *Scr. Mater.* **54**, 1379 (2006).
- D. Poquillon, B. Viguier, and A. Andrieu: Experimental data about mechanical behaviour during compression tests for various matted fibres. *J. Mater. Sci.* **40**, 5963 (2006).
- J.-P. Vassal, L. Orgeas, and D. Favier: Modelling microstructure effects on the conduction in fibrous materials with fibre–fibre interface barriers. *Modell. Simul. Mater. Sci. Eng.* **16**, 035007 (2008).
- F. Dalmas, J.-Y. Cavaille, C. Gauthier, L. Chazeau, and R. Dendievel: Viscoelastic behavior and electrical properties of flexible nanofiber filled polymer nanocomposites. Influence of processing conditions. *Compos. Sci. Technol.* **67**, 829 (2007).
- J. Lux, A. Ahmadi, C. Gobbe, and C. Delisée: Macroscopic thermal properties of real fibrous materials: Volume averaging method and 3D image analysis. *Int. J. Heat Mass Transfer* **49**, 1958 (2006).
- A. Shahdin, J. Morlier, Y. Gourinat, L. Mezeix, and C. Bouvet: Fabrication and mechanical testing of a new sandwich structure with carbon fiber network core. *J. Sandwich Struct. Mater.* **12**, 569 (2010).
- J.P. Masse: Conception optimale de solutions multimatériaux multifonctionnelles: l’exemple des structures sandwich à peaux en acier – choix des matériaux et développement de nouveaux matériaux de cœur. Ph.D. Thesis, Grenoble INP, France, 2009.
- L. Mezeix: Développement de matériaux d’âme pour structures sandwich à base de fibres enchevêtrées. Ph.D. Thesis, Université de Toulouse, France, 2010.
- A.E. Markaki and T.W. Clyne: Mechanics of thin ultra-light stainless steel sandwich sheet material: Part I. Stiffness. *Acta Mater.* **51**, 1341 (2003).
- A.E. Markaki and T.W. Clyne: Mechanics of thin ultra-light stainless steel sandwich sheet material: Part II. Resistance to delamination. *Acta Mater.* **51**, 1351 (2003).
- J. Dean, P.M. Brown, and T.W. Clyne: The low, intermediate, and high speed impact response of lightweight sandwich panels with metallic fibre cores. In: *Proceedings of the 8th International Conference on Sandwich Structure (ICCS8), Portugal*; A.J.M. Ferreira, ed, 2008.
- R. Gustavsson: Formable sandwich construction material and use of the material as construction material in vehicles, refrigerators, boats, etc. Patent WO 98/01295, AB Volvo, January 15, 1998.
- D. Verchere: Structures sandwich acier/polymère/acier. Tech. Ing. Ref M5810, 2011.
- A.E. Markaki and T.W. Clyne: Magneto-mechanical actuation of bonded ferromagnetic fibre arrays. *Acta Mater.* **53**, 877 (2005).
- P. Liu, G. He, and L.H. Wu: Fabrication of sintered steel wire mesh and its compressive properties. *Mater. Sci. Eng., A* **489**, 21 (2008).
- J.P. Masse and D. Poquillon: Mechanical behavior of entangled materials with or without cross-linked fibers. *Scr. Mater.* **68**, 39 (2013).
- L. Mezeix, C. Bouvet, J. Huez, and D. Poquillon: Mechanical behavior of entangled fibers and entangled cross-linked fibers during compression. *J. Mater. Sci.* **44**, 3652 (2009).
- C.M. van Wyk: Note on the compressibility of wool. *J. Text. Inst.* **37**, 285–292 (1946).
- S. Toll: Packing mechanics of fiber reinforcements. *Polym. Eng. Sci.* **38**, 1337 (1998).
- D. Durville: Numerical simulation of entangled materials mechanical properties. *J. Mater. Sci.* **40**, 5941 (2005).
- C. Barbier, R. Dendievel, and D. Rodney: Role of friction in the mechanics of nonbonded fibrous materials. *Phys. Rev. E* **80**, 16115 (2009).
- O. Bouaziz, J.P. Masse, and Y. Bréchet: An analytical description of the mechanical hysteresis of entangled materials during loading–unloading in uniaxial compression. *Scr. Mater.* **64**, 107 (2011).
- S. Raganathan and S.G. Advani: Fiber–fiber interactions in homogeneous flows of nondilute suspensions. *J. Rheol.* **35**, 1499 (1991).
- B. Mlekusch: Thermoelastic properties of short-fibre-reinforced thermoplastics. *Compos. Sci. Technol.* **59**, 547 (1999).
- C. Eberhardt and A. Clarke: Fibre-orientation measurements in short-glass-fibre composites. Part I: Automated, high-angular-resolution measurement by confocal microscopy. *Compos. Sci. Technol.* **61**, 1389 (2001).
- M. Delincé and F. Delannay: Elastic anisotropy of a transversely isotropic random network of interconnected fibres: Non-triangulated network model. *Acta Mater.* **52**, 1013 (2004).
- H. Yang and B.W. Lindquist: Application of digital image processing XXIII. In *SPIE*; A.G. Tescher, ed, Society of Photographic Instrumentation Engineers: San Diego, CA, 2000.
- R.H. Gong and A. Newton: Image-analysis techniques part II: The measurement of fibre orientation in nonwoven fabrics. *J. Text. Inst.* **87**, 371 (1996).
- J.C. Tan, J.A. Elliott, and T.W. Clyne: Analysis of tomography images of bonded fibre networks to measure distributions of fibre segment length and fibre orientation. *Adv. Eng. Mater.* **8**, 495 (2006).
- J.Y. Buffière, E. Maire, J. Adrien, J.P. Masse, and E. Boller: In situ experiments with x ray tomography: An attractive tool for experimental mechanics. *Exp. Mech.* **50**, 289 (2010).
- Avizo 5: <http://www.scientificcomputing.com/Avizo-5.aspx>.
- P. Latil, L. Orgéas, C. Geindreau, P.J.J. Dumont, and S. Rolland du Roscoat: Towards the 3D in situ characterisation of deformation micro-mechanisms within a compressed bundle of fibres. *Compos. Sci. Technol.* **71**(4), 480 (2011).