



HAL
open science

Simulation of hitting times for Bessel processes with non integer dimension

Madalina Deaconu, Samuel Herrmann

► **To cite this version:**

Madalina Deaconu, Samuel Herrmann. Simulation of hitting times for Bessel processes with non integer dimension. Bernoulli, 2016. hal-00933198v1

HAL Id: hal-00933198

<https://hal.science/hal-00933198v1>

Submitted on 23 Jan 2014 (v1), last revised 13 May 2016 (v2)

HAL is a multi-disciplinary open access archive for the deposit and dissemination of scientific research documents, whether they are published or not. The documents may come from teaching and research institutions in France or abroad, or from public or private research centers.

L'archive ouverte pluridisciplinaire **HAL**, est destinée au dépôt et à la diffusion de documents scientifiques de niveau recherche, publiés ou non, émanant des établissements d'enseignement et de recherche français ou étrangers, des laboratoires publics ou privés.



Distributed under a Creative Commons Attribution - NonCommercial - NoDerivatives 4.0 International License

SIMULATION OF HITTING TIMES FOR BESSEL PROCESSES WITH NON INTEGER DIMENSION *

BY MADALINA DEACONU[†] AND SAMUEL HERRMANN[‡]

Inria, Villers-lès-Nancy, F-54600, France;

Université de Lorraine, CNRS, Institut Elie Cartan de Lorraine - UMR 7502,

Vandoeuvre-lès-Nancy, F-54506, France; [†]

*Institut de Mathématiques de Bourgogne (IMB) - UMR 5584, Université de Bourgogne, B.P. 47
870, 21078 Dijon Cedex, France* [‡]

In this paper we pursue and complete the study of the simulation of the hitting time of some given boundaries for Bessel processes. These problems are of great interest in many application fields as finance and neurosciences. In a previous work [3], the authors introduced a new method for the simulation of hitting times for Bessel processes with integer dimension. The method was based mainly on the explicit formula for the distribution of the hitting time and on the connexion between the Bessel process and the Euclidean norm of the Brownian motion. This method does not apply anymore for a non integer dimension. In this paper we consider the simulation of the hitting time of Bessel processes with non integer dimension and provide a new algorithm by using the additivity property of the laws of squared Bessel processes. We split each simulation step in two parts: one is using the integer dimension case and the other one considers hitting time of a Bessel process starting from zero.

1. Introduction.

The aim of this paper is to construct new methods for approaching the hitting time of a given level for Bessel processes of one non-integer dimension. Diffusion hitting times are important quantities in many fields of sciences and applications, such as mathematical science, finance, geophysics or neurosciences. A typical example is the study of path dependent exotic options as barrier options in finance.

On one hand, analytic expressions for hitting time densities are well known and studied only in some very particular situations. On the other hand, the study of the approximation of the hitting times for stochastic differential equations is an active area of research since very few results exist already. For the Brownian motion, we can approach this quantity simply by using Gaussian random variables. Four alternatives for dealing with the characterization of hitting times in the Brownian case exist : Monte Carlo and Euler based methods, Volterra integral equation for Gaussian Markov processes, series expansion as performed by Durbin [5] or partial differential equation approaches which are based on the explicit form of the probability distribution function of the Brownian motion. These methods do not apply in the general diffusion case as they rely on this explicit form. For the general diffusion case, very few studies in this direction exist. The only methods that can be used are the Monte Carlo method and time splitting method like the Euler scheme. Some works have already been done in the context of smooth drift and diffusion coefficient by Gobet and Menozzi

*The second author was supported by Conseil Regional de Bourgogne (contract no. 2012-9201AAO047S01283)

AMS 2000 subject classifications: 65C20, 60K35, 60K30

Keywords and phrases: Bessel processes with non integer dimension, hitting time, numerical algorithm

[6, 7]. A recent paper by Ichiba and Kardaras [9] also uses the representation of the passage density as the mean of a three dimensional Brownian motion.

Our study focuses on the numerical approach for the hitting time of a Bessel process. The main point of this work is the introduction of an iterative procedure for approaching the hitting time by using the structure and the particular properties of the Bessel process. In particular, our approach avoids splitting time methods. More precisely, we consider the simulation for the hitting time of Bessel processes with non integer dimension and construct a new algorithm by using the additivity property of the laws of squared Bessel processes. We split each simulation step in two parts : one uses the integer dimension case and the other considers the hitting time of a Bessel process starting from zero.

The paper is organized as follows. Sections 2, 3 and 4 introduce some generalities about Bessel processes and the properties needed in the paper. Section 5 gives a description of the hitting time of a particular boundary for a Bessel process starting from 0. In section 6, the algorithm is provided and the convergence discussed. Finally, section 7 gives some numerical results.

2. Research topic - Bessel processes.

We consider the δ -dimensional Bessel process ($\delta > 1$), starting from x_0 , which is the solution of the following stochastic differential equation

$$(2.1) \quad \begin{cases} X_t^{\delta, x_0} &= X_0^{\delta, x_0} + \frac{\delta - 1}{2} \int_0^t (X_s^{\delta, x_0})^{-1} ds + B_t, \\ X_0^{\delta, x_0} &= x_0, \quad x_0 \geq 0. \end{cases}$$

Let us recall that the Bessel process is characterized either by its dimension δ or, alternatively, by its index ν given by $\nu = \delta/2 - 1$.

For a fixed $L > 0$ let us denote by

$$(2.2) \quad \tau_L = \inf\{t \geq 0; X_t^{\delta, x_0} = L\},$$

the first time that the process hits the level L . In the Bessel process case an explicit form of the Laplace transform of τ_L exists :

$$\mathbb{E}_{x_0} \left[e^{-\lambda \tau_L} \right] = \frac{(x_0)^{-\nu}}{L^{-\nu}} \frac{I_\nu(x_0 \sqrt{2\lambda})}{I_\nu(L \sqrt{2\lambda})}, \quad y > 0,$$

here $I_\nu(x)$ denotes the modified Bessel function. Ciesielsky and Taylor [1] also proved that for $\delta \in \mathbb{N}$ the tail distribution is given by, when starting from 0

$$\mathbb{P}(\tau_L > t) = \frac{1}{2^{\nu-1} \Gamma(\nu + 1)} \sum_{k=1}^{\infty} \frac{j_{\nu, k}^{\nu-1}}{\mathcal{J}_{\nu+1}(j_{\nu, k})} e^{-\frac{j_{\nu, k}^2}{2L^2} t}.$$

where \mathcal{J} is the Bessel function of the first kind, and $j_{\nu, k}$ is the associated sequence of its positive zeros. These formulas are restricted to the integer dimension case (see [8] for non integer dimensions) and are obviously miss-adapted and not suited for numerical approaches.

Let us also recall some properties of Bessel processes with respect to their dimension as follows from Revuz and Yor [13] or Jeanblanc, Yor and Chesney [10].

1. For $\delta > 2$ the process $BESQ^\delta$ is transient and, for $\delta \leq 2$, it is recurrent.
2. For $\delta \geq 2$ the point 0 is polar for $BESQ^\delta$, and for $\delta \leq 1$ it is reached almost surely.
3. For $\delta = 0$ the point 0 is absorbing.
4. For $0 < \delta < 2$ the point 0 is instantaneously reflecting.

First, we introduce some relations connecting Bessel processes of different dimensions. The first relation is based on Girsanov's transformation and the second one is a decomposition of the squared Bessel process as a sum of two independent squared Bessel processes.

3. Absolute continuity.

On the canonical space $\Omega = \mathcal{C}(\mathbb{R}_+, \mathbb{R}_+)$, let Z be the canonical map and $\mathcal{F}_t = \sigma\{Z_s, 0 \leq s \leq t\}$ be the canonical filtration. We denote by $\mathbb{P}^{\delta, y}$ the law of the Bessel process of dimension δ starting from y , $y > 0$.

Let us state the following result from Jeanblanc, Yor and Chesney [10] (Proposition 6.1.5.1, page 364).

PROPOSITION 3.1. *The following absolute continuity relation between a Bessel process of dimension δ and a Bessel process of dimension 2 holds*

$$\mathbb{P}^{\delta, y} |_{\mathcal{F}_t} = \left(\frac{Z_t}{y} \right)^{\delta/2-1} \exp \left\{ -\frac{(\delta/2-1)^2}{2} \int_0^t \frac{ds}{Z_s^2} \right\} \mathbb{P}^{2, y} |_{\mathcal{F}_t}, \forall t \geq 0.$$

It seems difficult to use such a relation in order to simulate Bessel hitting times for any dimension δ even if it leads to study only the 2-dimensional case. The use of Radon-Nikodym's derivative happens to be unuseful for numerical purposes.

4. Additivity of Bessel processes.

An important property, due to Shiga and Watanabe [15], is the additivity property for the family of squared Bessel processes usually denoted by BESQ. Let us denote by $\mathbb{P}_1 * \mathbb{P}_2$ the convolution of \mathbb{P}_1 and \mathbb{P}_2 , where \mathbb{P}_1 and \mathbb{P}_2 are probability measures. In the following, we denote by \mathbb{Q}^{δ, x_0} the law of the squared Bessel process of dimension δ starting from x_0 .

PROPOSITION 4.1. *For every $x_0, x'_0 \geq 0$ and for every $\delta, \delta' \geq 0$ we have*

$$(4.1) \quad \mathbb{Q}^{\delta, x_0} * \mathbb{Q}^{\delta', x'_0} = \mathbb{Q}^{\delta+\delta', x_0+x'_0}.$$

5. Notations and preliminary results.

We start by recalling results and notations introduced in [3] that will be needed in the follow-up.

Consider the first hitting time of a curved boundary for the Bessel process of dimension δ starting from the origin. Let $\psi(t)$ denote the boundary, and introduce the following hitting time:

$$(5.1) \quad \tau_\psi = \inf\{t > 0; X_t^{\delta, 0} \geq \psi(t)\}.$$

For some suitable choice of the boundary, the distribution of τ_ψ can be explicitly computed. The result is based on the method of images (see for instance [2] for the origin of this method and [11] for a complete presentation).

PROPOSITION 5.1. Set $a > 0$ and $\delta > 0$. Let us consider the following curved boundary:

$$(5.2) \quad \psi_{a,\delta}(t) = \sqrt{2t \log \frac{a}{\Gamma(\frac{\delta}{2})t^{\frac{\delta}{2}}2^{\frac{\delta}{2}-1}}}, \quad \text{for } t \in \text{Supp}(\psi) := [0, T_{a,\delta}],$$

where $T_{a,\delta}$ is the largest definition time and is given by

$$(5.3) \quad T_{a,\delta} := \left(\frac{a}{\Gamma(\frac{\delta}{2})2^{\frac{\delta}{2}-1}} \right)^{\frac{2}{\delta}}.$$

We can express explicitly the distribution of τ_ψ (simplified notation corresponding to $\tau_{\psi_{a,\delta}}$). It has its support in $\text{Supp}(\psi)$ and is given by

$$(5.4) \quad \begin{aligned} \mathbb{P}_0(\tau_\psi \in dt) &= \frac{1}{2at} \left(2t \log \frac{a}{\Gamma(\frac{\delta}{2})t^{\frac{\delta}{2}}2^{\frac{\delta}{2}-1}} \right)^{\frac{\delta}{2}} \mathbb{1}_{\text{Supp}(\psi)}(t) dt \\ &= \frac{1}{2at} (\psi_{a,\delta})^\delta(t) \mathbb{1}_{\text{Supp}(\psi)}(t) dt. \end{aligned}$$

Let us note that the maximum of the function $\psi_{a,\delta}(t)$ is reached for $t_{\max}(a) = \frac{T_{a,\delta}}{e}$ and equals

$$(5.5) \quad W_{a,\delta} := \sup_{t \in \text{Supp}(\psi)} \psi_{a,\delta}(t) = \sqrt{\frac{\delta}{e} \left(\frac{a}{\Gamma(\frac{\delta}{2})2^{\frac{\delta}{2}-1}} \right)^{\frac{2}{\delta}}} = \sqrt{\frac{\delta}{e}} T_{a,\delta}.$$

Moreover the distribution $u_{a,\delta}(t, x) dx := \mathbb{P}(X_t^{\delta,0} \in dx, \tau_\psi > t)$ has the form

$$(5.6) \quad u_{a,\delta}(t, x) = \left(\frac{1}{2^{\frac{\delta}{2}-1} \Gamma(\frac{\delta}{2}) t^{\frac{\delta}{2}}} \exp\left(-\frac{x^2}{2t}\right) - \frac{1}{a} \right) x^{\delta-1}.$$

Scaling property Notice a scaling property which will be used in the sequel. Using relations (5.2) and (5.3) we obtain :

$$(5.7) \quad \psi_{a,\delta}^2(t) = 2t \log \left(\frac{T_{a,\delta}}{t} \right)^{\frac{\delta}{2}} = \delta T_{a,\delta} \left(\frac{t}{T_{a,\delta}} \log \left(\frac{T_{a,\delta}}{t} \right) \right) = \delta T_{a,\delta} \Phi^2 \left(\frac{t}{T_{a,\delta}} \right),$$

where

$$(5.8) \quad \Phi(t) = \sqrt{t \log \left(\frac{1}{t} \right)} \mathbb{1}_{[0,1]}(t).$$

PROOF FOR PROPOSITION 5.1.

This result was already presented in the particular case where the dimension of the Bessel process δ is strictly larger than 1. In that situation, the Bessel process satisfies a SDE:

$$(5.9) \quad X_t^{\delta,x_0} = x_0 + \frac{\delta-1}{2} \int_0^t (X_s^{\delta,x_0})^{-1} ds + B_t.$$

The result is then linked to properties of the associated partial differential operator. Let us note that the Bessel process is always non negative. But the Bessel processes associated with dimensions

smaller than 1 are not semi-martingales and so, the dynamic of the processes are related to the local time at 0 and do not satisfy (5.9). For this reason we will propose a proof based only on stochastic tools (which is inspired by arguments developed for the Brownian motion by Lerche [11]). We introduce first the squared Bessel process $Y_t = (X_t^{\delta, x_0})^2$ which satisfies the SDE for all $\delta > 0$:

$$(5.10) \quad Y_t = x_0^2 + \delta t + 2 \int_0^t \sqrt{Y_s} dB_s.$$

Let us denote the transition probabilities by $p_{y_0}(t, dx) := \mathbb{P}((X_t^{\delta, x_0})^2 \in dx) = \mathbb{P}_{y_0}(Y_t \in dx)$ with $y_0 = x_0^2$. The density is given by:

$$(5.11) \quad p_y(t, x) = \frac{1}{2t} \left(\frac{x}{y}\right)^{\nu/2} \exp\left(-\frac{x+y}{2t}\right) I_\nu\left(\frac{\sqrt{xy}}{t}\right), \quad \text{for } t > 0, y > 0, x \geq 0,$$

where $\nu = \delta/2 - 1$ and $I_\nu(z)$ is the Bessel function whose expression is written:

$$I_\nu(z) = \sum_{n=0}^{\infty} \left(\frac{z}{2}\right)^{\nu+2n} \frac{1}{n! \Gamma(\nu + n + 1)}.$$

Moreover, for $y = 0$, we get

$$p_0(t, x) = \frac{x^{\frac{\delta}{2}-1}}{(2t)^{\delta/2} \Gamma(\delta/2)} e^{-\frac{x}{2t}}, \quad x \geq 0.$$

Step 1.

Let us denote by $\mathbb{P}_x^{t,y}$ the distribution of the squared Bessel bridge starting at x and reaching y at time t and \mathbb{P}_x stands for the distribution of the squared Bessel process starting at x , we denote lastly $(\mathcal{F}_t)_{t \geq 0}$ the filtration associated to the Bessel process.

Let $t_0 > 0$. Simple computations (using the transition probabilities and the Markov property of the Bessel process) permit obtaining the following Radon-Nikodym derivative for $t < t_0$ (see, for instance, [14] page 433):

$$(5.12) \quad \frac{d\mathbb{P}_x^{t_0,y}}{d\mathbb{P}_x} \Big|_{\mathcal{F}_t} = \frac{p_{Y_t}(t_0 - t, y)}{p_x(t_0, y)}, \quad y > 0, x \geq 0.$$

Let us note that this formula cannot be extended to the case $t = t_0$ since $\mathbb{P}_x^{t_0,y}$ is not absolutely continuous with respect to \mathbb{P}_x on \mathcal{F}_{t_0} . For $y = 0$, the result can be obtained by continuity:

$$(5.13) \quad \frac{d\mathbb{P}_x^{t_0,0}}{d\mathbb{P}_x} \Big|_{\mathcal{F}_t} = \lim_{y \rightarrow 0} \frac{p_{Y_t}(t_0 - t, y)}{p_x(t_0, y)}, \quad x \geq 0.$$

Let us compute explicitly the r.h.s of (5.13). By (5.11) and for $x > 0$, we get

$$\begin{aligned} \frac{d\mathbb{P}_x^{t_0,0}}{d\mathbb{P}_x} \Big|_{\mathcal{F}_t} &= \lim_{y \rightarrow 0} \frac{\frac{1}{2(t_0-t)} \left(\frac{y}{Y_t}\right)^{\nu/2} \exp\left(-\frac{Y_t+y}{2(t_0-t)}\right) I_\nu\left(\frac{\sqrt{Y_t y}}{t_0-t}\right)}{\frac{1}{2t_0} \left(\frac{y}{x}\right)^{\nu/2} \exp\left(-\frac{x+y}{2t_0}\right) I_\nu\left(\frac{\sqrt{xy}}{t_0}\right)} \\ &= \left(\frac{t_0}{t_0-t}\right)^{\nu+1} \exp\left(-\frac{Y_t}{2(t_0-t)} + \frac{x}{2t_0}\right). \end{aligned}$$

This result can be expressed with respect to both the transition probability and the invariant measure μ satisfying $\mu(x)p_x(t, y) = \mu(y)p_y(t, x)$ that is $\mu(x) = x^\nu$. Defining

$$(5.14) \quad \xi(t, x) = \frac{p_0(t, x)}{\mu(x)} = \frac{1}{(2t)^{\delta/2}\Gamma(\delta/2)} e^{-\frac{x}{2t}}, \quad \text{for } x > 0, t > 0,$$

we obtain finally for any $t < t_0$:

$$(5.15) \quad D_t := \frac{d\mathbb{P}_x^{t_0, 0}}{d\mathbb{P}_x} \Big|_{\mathcal{F}_t} = \frac{\xi(t_0 - t, Y_t)}{\xi(t_0, x)}.$$

Let us just note that this result can be extended continuously to the case $x = 0$ by defining $\xi(t, 0) = \lim_{x \rightarrow 0} \xi(t, x) = (2t)^{-\delta/2}\Gamma(\delta/2)^{-1}$ and that $(D_s)_{s \leq t}$ is a martingale with respect to \mathbb{P}_x for $t < t_0$.

Step 2.

We prove now that $U(t_0, x)$ defined by

$$U(t_0, x)dx := \mathbb{P}_0(Y_{t_0} \in dx, \tau_{\psi^2}(Y) > t_0)$$

satisfies

$$U(t_0, x) = \left(\frac{1}{(2t_0)^{\delta/2}\Gamma(\delta/2)} e^{-\frac{x}{2t_0}} - \frac{1}{2a} \right) x^\nu,$$

which directly implies (5.6).

By conditioning, we obtain

$$U(t_0, x) = \mathbb{P}_0(\tau_{\psi^2}(Y) > t_0 | Y_{t_0} = x) p_0(t_0, x).$$

Due to a time inversion transformation and by using the Radon-Nikodym derivative given in Step 1, the following equation yields for $x < \psi^2(t_0)$:

$$\begin{aligned} U(t_0, x) &= \lim_{t \rightarrow t_0, t < t_0} \mathbb{P}_x^{t_0, 0}(\hat{\tau}(Y) > t) p_0(t_0, x) \\ &= \lim_{t \rightarrow t_0, t < t_0} \mathbb{E}_x[\mathbb{1}_{\{\hat{\tau} > t\}} D_t] p_0(t_0, x) \\ &= \lim_{t \rightarrow t_0, t < t_0} \mathbb{E}_x[D_{t \wedge \hat{\tau}}] p_0(t_0, x) - \lim_{t \rightarrow t_0, t < t_0} \mathbb{E}_x[\mathbb{1}_{\{\hat{\tau} \leq t\}} D_{\hat{\tau}}] p_0(t_0, x), \end{aligned}$$

where $\hat{\tau} = \tau_{\psi^2(t_0 - \cdot)}$. Since D_t is a continuous martingale, the optimal stopping theorem (in the time inverse filtration) leads to $\mathbb{E}_x[D_{t \wedge \hat{\tau}}] = D_0 = 1$. Moreover the function $\psi^2(t)$ has the following property: if $0 \leq x < \psi^2(t)$ then $\xi(t, x) < \frac{1}{2a}$, if $x > \psi^2(t)$ then $\xi(t, x) > \frac{1}{2a}$ and $\xi(t, \psi^2(t)) = \frac{1}{2a}$. In other words, the stopping time $\hat{\tau}$ can be defined as follows:

$$\hat{\tau} = \inf \left\{ t > 0 : \xi(t_0 - t, Y_t) \geq \frac{1}{2a} \right\} = \inf \left\{ t > 0 : D_t \geq \frac{1}{2a\xi(t_0, x)} \right\}.$$

We deduce that

$$\mathbb{E}_x[\mathbb{1}_{\{\hat{\tau} \leq t\}} D_{\hat{\tau}}] = \frac{1}{2a\xi(t_0, x)} \mathbb{P}_x(\hat{\tau} \leq t).$$

Therefore

$$U(t_0, x) = p_0(t_0, x) \left(1 - \frac{1}{2a\xi(t_0, x)} \lim_{t \rightarrow t_0} \mathbb{P}_x(\hat{\tau} \leq t) \right) = p_0(t_0, x) \left(1 - \frac{\mathbb{P}_x(\hat{\tau} \leq t_0)}{2a\xi(t_0, x)} \right).$$

Since ψ is a continuous function with $\psi(0) = 0$, we deduce that $\mathbb{P}_x(\hat{\tau} \leq t_0) = 1$. Thus, we obtain the result

$$U(t_0, x) = p_0(t_0, x) \left(1 - \frac{1}{2a\xi(t_0, x)} \right).$$

Step 3.

As an immediate consequence, the expression of $u_{a,\delta}(t, x)$ defined by (5.6) leads to

$$\begin{aligned} \mathbb{P}_0(\tau_{\psi^2}(Y) > t) &= \mathbb{P}_0(\tau_\psi(X) > t) = \int_0^{\psi_{a,\delta}^2(t)} U(t, x) dx = \int_0^{\psi_{a,\delta}(t)} 2wU(t, w^2) dw \\ &= \int_0^{\psi_{a,\delta}(t)} u_{a,\delta}(t, w) dw. \end{aligned}$$

The density of the hitting time can be easily obtained by derivation, see Proposition 2.2 in [3]. \square

6. Algorithm for approaching the hitting time.

In a previous paper [3], the authors developed an algorithm in order to simulate, in just a few steps, the Bessel hitting time. This was done for integer dimensions $\delta \geq 1$. The particular connexion between the Bessel process and the δ -dimensional Brownian motion gives in this case a geometrical interpretation in terms of the exit problem from a disk for a Brownian motion in dimension δ . This geometrical approach doesn't work any longer for non integer dimensions. In order to handle this difficulty, we construct here a new algorithm which is based on the additivity property expressed in Section 4.

Some notations: Let us start by making some notations. For a given dimension $\delta > 0$ denote $\delta' := \delta - \lfloor \delta \rfloor$. Consider also $\gamma \in [0, 1)$ (close to 1) and $L > 0$. We define, for $x > 0$

$$(6.1) \quad I(\delta, x) := 2^{\lfloor \delta \rfloor / 2 - 1} \Gamma \left(\frac{\lfloor \delta \rfloor}{2} \right) \left(\frac{\sqrt{e}\gamma(L^2 - x^2)}{\sqrt{(\lfloor \delta \rfloor - \delta\gamma)x^2 + \delta\gamma L^2} + \sqrt{\lfloor \delta \rfloor x^2}} \right)^{\lfloor \delta \rfloor}$$

and

$$(6.2) \quad N(\delta, x) := 2^{\delta' / 2 - 1} \Gamma \left(\frac{\delta'}{2} \right) \left(\frac{\sqrt{e}\gamma(L^2 - x^2)}{\sqrt{(\delta' - \delta\gamma)x^2 + \delta\gamma L^2} + \sqrt{\delta' x^2}} \right)^{\delta'}.$$

Algorithm (NI) : Simulation of $\tau_L = \inf\{t \geq 0 : X_t^{\delta, x_0} = L\}$

Initialization: $\Theta_0 = 0$, $M(0) = 0$, $\gamma \in (0, 1)$ some parameter chosen close to 1.

Step n, ($n \geq 1$): The Bessel process starts at time Θ_{n-1} in $M(n-1)$. While $L^2 - M^2(n-1) > \varepsilon$ do:

(n.1) Construct a Bessel process of dimension $[\delta]$ starting from $M(n-1)$ and stop this process at time $\theta_n^{(1)}$, the exit time of the $[\delta]$ -dimensional Brownian motion B_t from the moving sphere centered in $\underline{M}(n-1) := (M(n-1), 0, 0, \dots, 0) \in \mathbb{R}^{[\delta]}$ and with radius $\psi_{\alpha_n, [\delta]}(t)$, where

$$\alpha_n = I(\delta, M(n-1)),$$

following the definition given in (6.1).

(n.2) Construct also a second Bessel process, independent with respect to the previous one, of dimension $\delta' := \delta - [\delta]$ starting from 0. Stop this process the first time $\theta_n^{(2)}$ it hits the curved boundary $\psi_{\beta_n, \delta'}(t)$, where

$$\beta_n = N(\delta, M(n-1)),$$

following the definition given in (6.2).

(n.3) Define the stopping time (comparison of the two hitting times)

$$(6.3) \quad \theta_n = \inf\{\theta_n^{(1)}, \theta_n^{(2)}\}.$$

First notice that the additivity property of the Bessel processes ensures that $(X_t^{\delta, M(n-1)})^2$ has the same distribution as the sum of two independent processes defined in steps (n.1) and (n.2). We denote by

$$(Z_t^{\delta, M(n-1)})^2 = \|\underline{M}(n-1) + B_t\|^2 + (X_t^{\delta', 0})^2.$$

The values of α_n and β_n have been chosen in order to ensure the following bound:

$$(6.4) \quad \sup_{t \leq \theta_n} (Z_t^{\delta, M(n-1)})^2 \leq \sup_{t \leq \theta_n^{(1)}} \|\underline{M}(n-1) + B_t\|^2 + \sup_{t \leq \theta_n^{(2)}} (X_t^{\delta', 0})^2 \leq M^2(n-1) + \gamma(L^2 - M^2(n-1)).$$

In particular, since $\gamma < 1$, $\sup_{t \leq \theta_n} Z_t^{\delta, M(n-1)} < L$.

We lastly define $M(n) = Z_{\theta_n}^{\delta, M(n-1)} < L$ and $\Theta_n = \Theta_{n-1} + \theta_n$. This achieves the n -th step.

Outcome: N^ε is then the number of steps entirely completed that is the first one in the algorithm such that $L^2 - (M(n))^2 \leq \varepsilon$, Θ_{N^ε} the approximate hitting time and $M(N^\varepsilon)$ the approximate exit position.

Figure 1 presents several paths of the random walk $(M(n), n \geq 0)$ defined by the algorithm (NI) for $\delta = 2.7$, $\gamma = 0.9$ and for the level $L = 5$.

REMARK 6.1. 1. The upper-bound (6.4) will be discussed in the proof of Theorem 6.2 (see the bound (6.13) in Step 2).

2. The first step of the algorithm could be simplified since the starting position is 0. The procedure then consists in first choosing α_1 such that $\psi_{\alpha_1, \delta}(t) < L$ for all $t \geq 0$. Then we simulate the first hitting time of this moving boundary which is linked to the Gamma distribution. We denote this random variable by θ_1 and we compute the value of the process at this time:

$$M(1) = \psi_{\alpha_1, \delta}(\theta_1).$$

Finally we set $\Theta_1 = \Theta_0 + \theta_1$. Even if this modified version of the algorithm (NI) seems simpler (just the first step is different), in the following we will prove only the convergence results associated to the algorithm (NI).

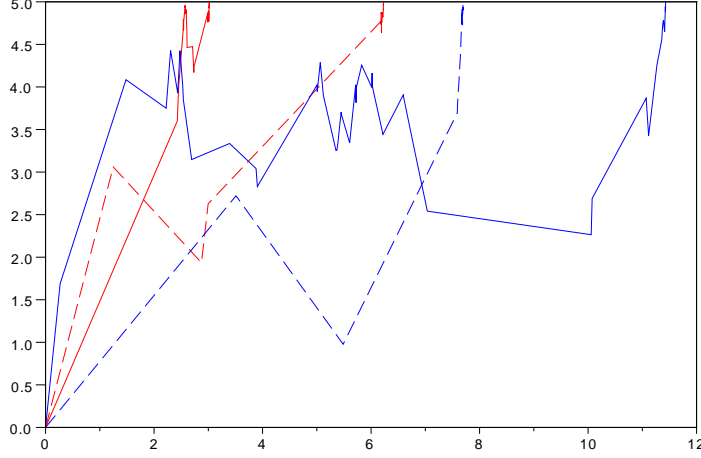


FIG 1. Several paths of the random walk

Realization of the algorithm.

One particular important task in this procedure is the simulation of $Z_{\theta_n}^{\delta, M(n-1)}$ in the n -th step. The method we use is the following:

- If $\theta_n = \theta_n^{(1)}$ then

$$\|\underline{M}(n-1) + B_{\theta_n}\|^2 = M^2(n-1) + 2M(n-1)\pi_1(U)\psi_{\alpha_n, [\delta]}(\theta_n) + \psi_{\alpha_n, [\delta]}^2(\theta_n),$$

where π_1 is the projection on the first coordinate and U is a random variable in $\mathbb{R}^{[\delta]}$ uniformly distributed on the sphere of radius 1. It suffices now to simulate $X_{\theta_n}^{\delta', 0}$. Since $\theta_n^{(1)}$ and $\theta_n^{(2)}$ are independent, we get

$$\mathbb{E}\left[f(X_{\theta_n}^{\delta', 0}) \mid \theta_n^{(2)} > \theta_n^{(1)}\right] = \int_{\mathbb{R}_+} f(x)w(\theta_n, x) dx,$$

where

$$w(t, x)dx = \mathbb{P}(X_t^{\delta', 0} \in dx \mid \tau_\psi > t) = \frac{\mathbb{P}(X_t^{\delta', 0} \in dx, \tau_\psi > t)}{\mathbb{P}(\tau_\psi > t)} = \frac{u(t, x)}{\int_0^{\psi(t)} u(t, x) dx}$$

and $u(t, x)$ stands here for $u_{\beta_n, \delta'}(t, x)$ which was already defined in the previous paper [3] and was restated in (5.6). More precisely

$$u(t, x) = \left(\frac{1}{2^{\delta'/2-1}} \frac{1}{t^{\delta'/2}} \frac{1}{\Gamma(\delta'/2)} \exp\left(-\frac{x^2}{2t}\right) - \frac{1}{\beta_n} \right) x^{\delta'-1}.$$

Here for notational simplicity the index ψ of τ_ψ stands for $\psi_{\beta_n, \delta'}$. Let us just note that the support of $w(\theta_n, \cdot)$ is $[0, \psi_{\beta_n, \delta'}(\theta_n)]$. In order to simulate $X_{\theta_n}^{\delta', 0}$, given $\tau_\psi > \theta_n$, we employ a

rejection sampling method. Let S be a random variable defined on the interval $[0, \psi_{\beta_n, \delta'}(\theta_n)]$ with the probability density function:

$$r(x) = \frac{\delta' x^{\delta'-1}}{(\psi_{\beta_n, \delta'}(\theta_n))^{\delta'}}, \quad \text{for } 0 \leq x \leq \psi_{\beta_n, \delta'}(\theta_n).$$

This variable can be easily sampled by using a standard uniform random variable V : S has the same distribution as

$$\psi_{\beta_n, \delta'}(\theta_n) V^{1/\delta'}.$$

Considering the following constant:

$$C = \frac{(\psi_{\beta_n, \delta'}(\theta_n))^{\delta'}}{\delta'} \left(\frac{1}{2^{\delta'/2-1} \theta_n^{\delta'/2} \Gamma(\delta'/2)} - \frac{1}{\beta_n} \right),$$

we observe that $u(\theta_n, x) \leq Cr(x)$ for all x . Then the procedure is the following

1. Sample two independent r.v. U_* and S on respectively $[0, 1]$ and $[0, \psi_{\beta_n, \delta'}(\theta_n)]$. The first one is uniformly distributed and the p.d.f. of the second one is given by $r(x)$.
2. If $U_* \leq \frac{u(\theta_n, S)}{Cr(S)}$ define $\xi' = S$ otherwise return to the first step.

With this algorithm, the p.d.f. of ξ' is equal to $w(\theta_n, x)$, it has the same distribution as $X_{\theta_n}^{\delta', 0}$ given $\theta_n = \theta_n^{(1)}$.

Finally we obtain

$$Z_{\theta_n}^{\delta, M(n-1)} = \sqrt{(\xi')^2 + M^2(n-1) + 2M(n-1)\pi_1(U)\psi_{\alpha_n, [\delta]}(\theta_n) + \psi_{\alpha_n, [\delta]}^2(\theta_n)}.$$

- If $\theta_n = \theta_n^{(2)}$ the result is quite similar. We obtain

$$Z_{\theta_n}^{\delta, M(n-1)} = \sqrt{\psi_{\beta_n, \delta'}^2(\theta_n) + M^2(n-1) + 2M(n-1)\pi_1(U)\xi + \xi^2}$$

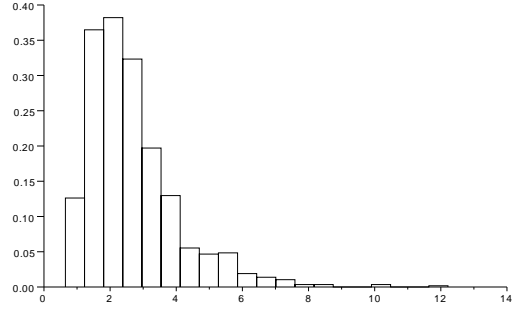
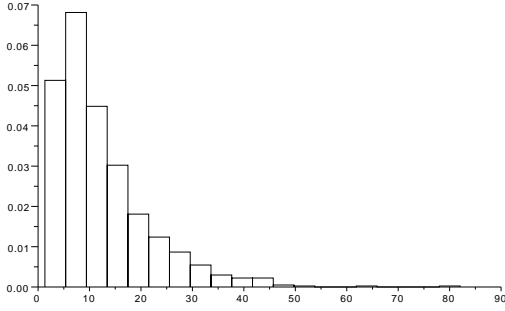
where ξ is obtained in a similar way as ξ' . We just replace δ' by δ and β_n by α_n .

THEOREM 6.2. *Set $\delta \geq 1$. The number of steps N^ε of the algorithm (NI) is almost surely finite. Moreover, there exist constants $C_\delta > 0$ and $\varepsilon_0(\delta) > 0$, such that*

$$\mathbb{E}[N^\varepsilon] \leq C_\delta |\log \varepsilon|, \quad \text{for all } \varepsilon \leq \varepsilon_0(\delta).$$

Furthermore Θ_{N^ε} converges in distribution towards τ_L , the hitting time of the level L for the δ dimensional Bessel process as $\varepsilon \rightarrow 0$.

The following histograms present the distribution of the hitting times Θ_{N^ε} for $\delta = 1.5$ and $\delta = 7.5$. Of course, the higher the dimension of the Bessel process is, the smaller the hitting time is.



These simulations (1000 for each histogram) have been realized with the following choice of parameters: $\gamma = 0.9$, $L = 5$ and $\varepsilon = 0.001$, $\delta = 1.5$ on the left and $\delta = 7.5$ on the right.

PROOF. Instead of considering the Markov chain $(M(n), n \geq 0)$, we focus our attention to the squared process $R(n) = (M(n))^2$ and we stop the algorithm as soon as $R(n)$ becomes larger than $L^2 - \varepsilon$.

Step 1. Definition and decomposition of the operator P

We estimate first the number of steps. Since $(R(n), n \geq 0)$ is an homogeneous Markov chain, let us start by computing the transition probabilities associated to $R(n)$. We introduce the operator Pf defined, for any non-negative measurable function $f : \mathbb{R}_+ \rightarrow \mathbb{R}_+$:

$$(6.5) \quad Pf(x) := \mathbb{E}[f(R(n)) | R(n-1) = x] = \mathbb{E}\left[f\left(\|\underline{\sqrt{x}} + B_{\theta_n}\|^2 + (X_{\theta_n}^{\delta', 0})^2\right)\right],$$

where θ_n is defined in (6.3). Since $R(n)$ is an homogeneous Markov chain, the transition Pf does not depend on the time n . For notational simplicity we neglect some indexes: the step n ; $X^{\delta', 0}$ is replaced by X ; $\theta_n^{(i)}$ by $\theta^{(i)}$, for $i = 1, 2$; α_n is replaced by α and β_n is replaced by β . We can express (6.5) by splitting it into two parts $P_i f(x)$, $i = 1, 2$ with

$$P_i f(x) = \mathbb{E}\left[f\left(\|\underline{\sqrt{x}} + B_{\theta^{(i)}}\|^2 + (X_{\theta^{(i)}})^2\right) \mathbb{1}_{\{\theta = \theta^{(i)}\}}\right].$$

Thus

$$(6.6) \quad Pf(x) = P_1 f(x) + P_2 f(x).$$

The class of functions that will be considered in the following satisfies the hypothesis :

(H) The function f is such that

$$f^{(p)} \leq 0, \forall p \in \{1, 2, 3, 4\},$$

this means that the first four derivatives of f are negative. An example of such a function will be used later on.

Step 2. Distributions associated with $\theta^{(i)}$.

Let us denote by $U_i(t)dt$ the distribution of $\theta^{(i)}$ and its support $[0, s_i]$. With the notation in (5.3) we have

$$(6.7) \quad s_1 = T_{\alpha, \lfloor \delta \rfloor} \text{ and } s_2 = T_{\beta, \delta'}.$$

These distributions are those of stopping times corresponding to the function $\psi_{a,\delta}(t)$, see (5.2), with a suitable parameter a and a suitable dimension. By applying the scaling property (5.7) we get

$$(6.8) \quad \psi_{\alpha, [\delta]}(t) = \sqrt{[\delta] s_1} \Phi \left(\frac{t}{s_1} \right).$$

From the same arguments, the scaling property associated to $\theta^{(2)}$ is

$$\psi_{\beta, \delta'}(t) = \sqrt{\delta' s_2} \Phi \left(\frac{t}{s_2} \right), \quad \text{with } \delta' = \delta - [\delta].$$

Since

$$\begin{aligned} U_1(t)dt &= \mathbb{P}_0(\theta^{(1)} \in dt) \\ &= \frac{1}{2\Gamma([\delta]/2)2^{[\delta]/2-1}s_1^{[\delta]/2}t} \left(2t \log \left(\frac{s_1}{t} \right)^{[\delta]/2} \right)^{[\delta]/2} \mathbb{1}_{[0, s_1]}(t)dt \\ &= \frac{c_{[\delta]}}{t} \Phi^{[\delta]} \left(\frac{t}{s_1} \right) dt, \end{aligned}$$

with $c_d = \frac{1}{\Gamma(d/2)} \left(\frac{d}{2} \right)^{d/2}$. We therefore obtain the scaling property:

$$(6.9) \quad U_1(s_1 t) = \frac{c_{[\delta]}}{s_1 t} \Phi^{[\delta]}(t) \quad \text{and} \quad U_2(s_2 t) = \frac{c_{\delta'}}{s_2 t} \Phi^{\delta'}(t).$$

With our choice of α and β , we have

$$(6.10) \quad \begin{aligned} s_1 &= T_{\alpha, [\delta]} = \left[\frac{\alpha}{\Gamma([\delta]/2)2^{[\delta]/2-1}} \right]^{2/[\delta]} \\ &= \frac{e^{\gamma^2(L^2 - x)^2}}{(\sqrt{([\delta] - \delta\gamma)x + \delta\gamma L^2} + \sqrt{[\delta]x})^2} \\ &= s_2. \end{aligned}$$

By using (5.5) we get

$$(6.11) \quad W_{\alpha, [\delta]} = \sup_{t \in [0, s_1]} \psi_{\alpha, [\delta]}(t) = \sqrt{\frac{[\delta]}{e}} s_1$$

and the same property holds for s_2

$$(6.12) \quad W_{\beta, \delta'} = \sup_{t \in [0, s_2]} \psi_{\beta, \delta'}(t) = \sqrt{\frac{[\delta']}{e}} s_2.$$

Since we stop the Markov chain $R(n)$ in order to not hit L^2 , we have

$$(6.13) \quad \begin{aligned} (\sqrt{x} + W_{\alpha, [\delta]})^2 + W_{\beta, \delta'}^2 &= x + \frac{[\delta]}{e} s_1 + 2\sqrt{x} \sqrt{\frac{[\delta]}{e}} s_1 + \frac{\delta'}{e} s_2 \\ &= x + \frac{\delta}{e} s_1 + 2\sqrt{x} \sqrt{\frac{[\delta]}{e}} s_1 \\ &= x + \gamma(L^2 - x), \end{aligned}$$

by the choice of $s_1 = s_2$ and the value of s_1 given in (6.10). We deduce that for x close to 0, s_1 is close to $\gamma e L^2 / \delta$ and for x close to L^2 , s_1 is of the same order as $e \gamma^2 (L^2 - x)^2 / (4[\delta] L^2)$.

Step 3. Computation of $P_1 f(x)$.

Using the definition of $P_1 f$, we get

$$\begin{aligned}
(6.14) \quad P_1 f(x) &= \mathbb{E} \left[f \left(\|\sqrt{x} + B_\theta\|^2 + (X_\theta)^2 \right) \mathbb{1}_{\{\theta = \theta^{(1)}\}} \right] \\
&= \int_{\mathcal{S}^1} \int_0^{s_1} \mathbb{E} \left[f \left((\sqrt{x} + \pi_1(z) \psi_{\alpha, [\delta]}(t))^2 + \psi_{\alpha, [\delta]}^2(t) (1 - \pi_1^2(z)) + X_t^2 \right) \mathbb{1}_{\{\theta^{(2)} > t\}} \right] U_1(t) dt \sigma(dz) \\
&= \int_{\mathcal{S}^1} \int_0^{s_1} \mathbb{E} \left[f \left(x + 2\sqrt{x} \pi_1(z) \psi_{\alpha, [\delta]}(t) + \psi_{\alpha, [\delta]}^2(t) + X_t^2 \right) \mathbb{1}_{\{\theta^{(2)} > t\}} \right] U_1(t) dt \sigma(dz).
\end{aligned}$$

We denote here by \mathcal{S}^1 the unit sphere in $\mathbb{R}^{[\delta]}$, $\sigma(dz)$ the uniform surface measure on this sphere and $\pi_1(z)$ the projection on the first coordinate and α is chosen so that (6.10) is satisfied. Let us just note that the variable $y = x + 2\sqrt{x} \pi_1(z) \psi_{\alpha, [\delta]}(t) + \psi_{\alpha, [\delta]}^2(t) + X_t^2$ always stays in the interval $[0, L^2]$ on the event $\theta^{(2)} > t$. Consider the Taylor expansion of f in a neighborhood of x . By using **(H)** we have that $f^{(4)}(t) \leq 0$ on the whole interval $[0, L^2]$. Hence

$$(6.15) \quad P_1 f(x) \leq f(x)G_1 + f'(x)G_2 + \frac{1}{2} f''(x)G_3 + \frac{1}{6} f^{(3)}(x)G_4.$$

It suffices to compute G_k for $k = 1, 2, 3, 4$ where G_k is defined by

$$(6.16) \quad G_k := \int_{\mathcal{S}^1} \int_0^{s_1} \mathbb{E} \left[\left(\psi_{\alpha, [\delta]}^2(t) + 2\sqrt{x} \pi_1(z) \psi_{\alpha, [\delta]}(t) + X_t^2 \right)^{k-1} \mathbb{1}_{\{\theta^{(2)} > t\}} \right] U_1(t) dt \sigma(dz), \quad \forall k = 1, 2, 3, 4.$$

In particular $G_1 = \mathbb{P}[\theta^{(2)} > \theta^{(1)}]$. Using symmetry arguments, the term associated to the projection vanishes, and we can split G_2 into two parts, $G_2 = G_{2,1} + G_{2,2}$:

$$G_{2,1} := \int_0^{s_1} \psi_{\alpha, [\delta]}^2(t) \mathbb{P}(\theta^{(2)} > t) U_1(t) dt \quad \text{and} \quad G_{2,2} := \int_0^{s_1} \mathbb{E} \left[X_t^2 \mathbb{1}_{\{\theta^{(2)} > t\}} \right] U_1(t) dt.$$

By changing the variable $s_1 u = t$ and the scaling properties developed in Step 2, we obtain:

$$\begin{aligned}
G_{2,1} &= \int_0^1 \psi_{\alpha, [\delta]}^2(s_1 u) \mathbb{P}(\theta^{(2)} > s_1 u) U_1(s_1 u) s_1 du \\
&= \int_0^1 s_1 [\delta] \Phi^2(u) \left(\int_u^1 U_2(s_1 w) dw \right) \frac{c_{[\delta]}}{s_1 u} \Phi^{[\delta]}(u) s_1 du.
\end{aligned}$$

Using $s_1 = s_2$ and a change of variable, we get

$$(6.17) \quad G_{2,1} = s_1 [\delta] c_{[\delta]} \int_0^1 \int_u^1 \frac{1}{u} \Phi^{[\delta]+2}(u) s_1 U_2(s_1 v) dv du = s_1 \kappa_{2,1}$$

where

$$(6.18) \quad \kappa_{2,1} := [\delta] c_{[\delta]} c_{\delta'} \int_0^1 \int_u^1 \frac{1}{uv} \Phi^{[\delta]+2}(u) \Phi^{\delta'}(v) dv du > 0.$$

Notice that $\kappa_{2,1}$ is a constant which only depends on the dimension δ . We can also prove that there exists a constant $\kappa_{2,2}$ independent of x such that $G_{2,2} = s_1\kappa_{2,2}$. Indeed

$$\begin{aligned} G_{2,2} &= \int_0^{s_1} \mathbb{E} \left[X_t^2 \mathbb{1}_{\{\theta^{(2)} > t\}} \right] U_1(t) dt = s_1 \int_0^1 \mathbb{E} \left[X_{s_1 u}^2 \mathbb{1}_{\{\theta^{(2)} > s_1 u\}} \right] U_1(s_1 u) du \\ &= \int_0^1 \mathbb{E} \left[X_{s_1 u}^2 \mathbb{1}_{\{\forall r \leq s_1 u: X_r \leq \psi_{\beta, \delta'}(r)\}} \right] \frac{c_{[\delta]}}{u} \Phi^{[\delta]}(u) du. \end{aligned}$$

Using the scaling property of the Bessel process, we get

$$G_{2,2} = \int_0^1 \mathbb{E} \left[s_1 X_u^2 \mathbb{1}_{\{\forall r \leq u: X_r \leq \psi_{\beta, \delta'}(s_1 r)/\sqrt{s_1}\}} \right] \frac{c_{[\delta]}}{u} \Phi^{[\delta]}(u) du = s_1 \kappa_{2,2}$$

since $s_1 = s_2$ and thus $\psi_{\beta, \delta'}(s_1 r)/\sqrt{s_1} = \sqrt{\delta'} \Phi(r)$ does not depend on x but only on δ . To sum up, we have proved the existence of two constants $\kappa_{2,i}$, $i = 1, 2$, independent of x satisfying

$$(6.19) \quad G_2 = \kappa_2 s_1, \text{ where } \kappa_2 = \kappa_{2,1} + \kappa_{2,2}.$$

Let us now focus our attention on G_3 defined in (6.16).

While developing the square of $\psi_{\alpha, [\delta]}^2(t) + 2\sqrt{x}\pi_1(z)\psi_{\alpha, [\delta]}(t) + X_t^2$, we obtain 6 terms:

$$\begin{aligned} H_1 &= \psi_{\alpha, [\delta]}^4(t), \quad H_2 = 4x\pi_1^2(z)\psi_{\alpha, [\delta]}^2(t), \quad H_3 = X_t^4 \\ H_4 &= 4\psi_{\alpha, [\delta]}^3(t)\sqrt{x}\pi_1(z), \quad H_5 = 4\sqrt{x}\pi_1(z)\psi_{\alpha, [\delta]}(t)X_t^2, \quad H_6 = 2\psi_{\alpha, [\delta]}^2(t)X_t^2. \end{aligned}$$

Therefore G_3 can be split into 6 terms: $G_3 = \sum_{j=1}^6 G_{3,j}$ with

$$G_{3,j} := \int_{\mathcal{S}^1} \int_0^{s_1} \mathbb{E} \left[H_j \mathbb{1}_{\{\theta^{(2)} > t\}} \right] U_1(t) dt \sigma(dz).$$

Now, let us compute $G_{3,j}$ for $j = 1, \dots, 6$. First we note that, due to symmetry properties of the variable z , $G_{3,4} = G_{3,5} = 0$. By similar arguments as those included in the computation of G_2 , we get:

$$(6.20) \quad G_{3,1} = s_1^2 \kappa_{3,1} \quad \text{with} \quad \kappa_{3,1} := [\delta]^2 c_{[\delta]} c_{\delta'} \int_0^1 \int_u^1 \frac{1}{uv} \Phi^{[\delta]+4}(u) \Phi^{\delta'}(v) dv du > 0.$$

$$(6.21) \quad G_{3,2} = x s_1 \kappa_{3,2} \quad \text{with} \quad \kappa_{3,2} := 4\kappa_{2,1} \int_{\mathcal{S}^1} \pi_1^2(z) \sigma(dz) > 0.$$

$$(6.22) \quad G_{3,3} = s_1^2 \kappa_{3,3} \quad \text{with} \quad \kappa_{3,3} := \int_0^1 \mathbb{E} \left[X_u^4 \mathbb{1}_{\{\forall r \leq u: X_r \leq \sqrt{\delta'} \Phi(r)\}} \right] \frac{c_{[\delta]}}{u} \Phi^{[\delta]}(u) du > 0.$$

$$(6.23) \quad G_{3,6} = s_1^2 \kappa_{3,6} \quad \text{with} \quad \kappa_{3,6} := 2 \int_0^1 \mathbb{E} \left[X_u^2 \mathbb{1}_{\{\forall r \leq u: X_r \leq \sqrt{\delta'} \Phi(r)\}} \right] \frac{c_{[\delta]}}{u} [\delta] \Phi^{[\delta]+2}(u) du > 0.$$

To sum up, there exist two positive constants κ_3 and $\tilde{\kappa}_3$ independent of x such that

$$(6.24) \quad G_3 = \kappa_3 x s_1 + \tilde{\kappa}_3 s_1^2.$$

Finally, we consider the expression G_4 defined by (6.16). We are not going to compute it explicitly as we have just done for the first terms (the proof would become quite boring...). Due to the symmetry property of the variable z , the expansion of G_4 coupled to the computation of $(\psi_{\alpha, [\delta]}^2(t) + 2\sqrt{x}\pi_1(z)\psi_{\alpha, [\delta]}(t) + X_t^2)^3$ leads to terms which are either positive or equal to 0. Hence

$$(6.25) \quad G_4 \geq 0.$$

Step 4. Computation of $P_2f(x)$.

Using the definition of P_2f , we obtain:

$$\begin{aligned} P_2f(x) &= \mathbb{E} \left[f \left(\|\sqrt{x} + B_\theta\|^2 + (X_\theta)^2 \right) \mathbb{1}_{\{\theta = \theta^{(2)}\}} \right] \\ &= \int_0^{s_2} \mathbb{E} \left[f \left(\|\sqrt{x} + B_t\|^2 + \psi_{\beta, \delta'}^2(t) \right) \mathbb{1}_{\{\theta^{(1)} > t\}} \right] U_2(t) dt \\ &= \int_0^{s_2} \mathbb{E} \left[f \left(x + 2\langle \sqrt{x}, B_t \rangle + \|B_t\|^2 + \psi_{\beta, \delta'}^2(t) \right) \mathbb{1}_{\{\theta^{(1)} > t\}} \right] U_2(t) dt. \end{aligned}$$

By hypothesis **(H)**, f'' is non positive on the support of the Markov chain. Then, by using a Taylor expansion, the following bound holds: for any $x \in [0, L^2 - \varepsilon]$

$$P_2f(x) \leq f(x)\mathbb{P}(\theta^{(1)} > \theta^{(2)}) + f'(x) \int_0^{s_2} \mathbb{E} \left[\left(2\langle \sqrt{x}, B_t \rangle + \|B_t\|^2 + \psi_{\beta, \delta'}^2(t) \right) \mathbb{1}_{\{\theta^{(1)} > t\}} \right] U_2(t) dt.$$

The integral expression contains three distinct terms. The first one associated to the scalar product is equal to zero since the distribution of B_t given $\{\theta^{(1)} > t\}$ is rotationally invariant. The second and third terms are positive. We therefore deduce that for any function f satisfying **(H)**, the following bound holds:

$$(6.26) \quad P_2f(x) \leq f(x)\mathbb{P}(\theta^{(1)} > \theta^{(2)}).$$

Step 5. Application to a particular function f .

Let us introduce the function $f_\varepsilon : [0, L^2] \mapsto \mathbb{R}$ defined by

$$(6.27) \quad f_\varepsilon(x) = \log \left(\frac{L^2 - x}{(1 - \gamma)\varepsilon} \right),$$

where $\gamma < 1$ is the constant close to 1 already introduced in (6.13). Let us assume that the Markov chain M starts with the initial value $x \in [0, L^2 - \varepsilon]$ that is $R(0) = x$. We will prove that $f_\varepsilon(R(1))$ is a non-negative random variable. Indeed for any y in the support of $R(1)$ we have:

$$0 \leq y \leq (\sqrt{x} + W_{\alpha, [\delta]})^2 + W_{\beta, \delta'}^2,$$

where $W_{\alpha, [\delta]}$ is defined by (6.11) and $W_{\beta, \delta'}$ by (6.12). Using the identity (6.13), we obtain

$$f_\varepsilon(y) \geq \log \left(\frac{(L^2 - x)}{\varepsilon} \right) \geq 0$$

since $L^2 - x \geq \varepsilon$. We deduce therefore that f_ε is a non-negative function on the support of the Markov chain stopped at the first exit time of the interval $[0, L^2 - \varepsilon]$.

Let us now apply the operator P defined in (6.5) to the function f_ε . Since

$$f'_\varepsilon(x) = -\frac{1}{L^2 - x} < 0, \quad f_\varepsilon^{(k)}(x) = -\frac{(k-1)!}{(L^2 - x)^k} < 0, \quad \text{for } k = 2, 3, 4$$

the condition **(H)** is satisfied and we obtain by (6.15) and the computation of G_1, \dots, G_4 :

$$(6.28) \quad P_1 f_\varepsilon(x) \leq f_\varepsilon(x) \mathbb{P}(\theta^{(2)} > \theta^{(1)}) - \frac{s_1}{(L^2 - x)^2} \left(\kappa_2(L^2 - x) + \kappa_3 x \right),$$

by using (6.19) and (6.24).

Due to the explicit expression of s_1 in (6.7), there exists a constant $\kappa > 0$ independent of x and ε such that

$$(6.29) \quad P_1 f_\varepsilon(x) \leq f_\varepsilon(x) \mathbb{P}(\theta^{(2)} > \theta^{(1)}) - \kappa, \quad \forall x \in [0, L^2 - \varepsilon].$$

Combined with (6.26), we get

$$P f_\varepsilon(x) - f_\varepsilon(x) \leq -\kappa, \quad \forall x \in [0, L^2 - \varepsilon].$$

Due to a comparison theorem of the classical potential theory, see Norris [12], we deduce that

$$(6.30) \quad \mathbb{E}_x[N^\varepsilon] \leq \frac{f_\varepsilon(x)}{\kappa}.$$

In particular, for $x = 0$, the announced result in the statement of the theorem is proved.

Step 6. The time Θ_{N^ε} given by the algorithm is close to the first hitting time τ_L .

Let us denote by F (resp. F^ε) the cumulative distribution function of the random variable τ_L (resp. Θ_{N^ε}). We construct these two random variables on the same paths ; the law of the Bessel process of dimension δ is realized as a sum of two independent Bessel processes of dimension $\lfloor \delta \rfloor$ and δ' on random time intervals until the hitting time Θ_{N^ε} and afterwards, the paths are generated just by a Bessel process of dimension δ starting in $M(N^\varepsilon)$. Since $\tau_L \geq \Theta_{N^\varepsilon}$ a.s. we immediately obtain the first bound

$$F(t) \leq F^\varepsilon(t), \quad t \geq 0.$$

Moreover by similar arguments as those presented in Theorem 2.9 [3], for $\alpha > 0$, we get

$$(6.31) \quad \begin{aligned} 1 - F(t) &= \mathbb{P}(\tau_L > t) = \mathbb{P}(\tau_L > t, \Theta_{N^\varepsilon} \leq t - \alpha) + \mathbb{P}(\tau_L > t, \Theta_{N^\varepsilon} > t - \alpha) \\ &\leq F^\varepsilon(t - \alpha) \sup_{y \in [\sqrt{L^2 - \varepsilon}, L]} \mathbb{P}_y(\tau_L > \alpha) + 1 - F^\varepsilon(t - \alpha). \end{aligned}$$

Applying Shiga and Watanabe's result (4.1), the Bessel process of dimension $\delta > 1$ is stochastically larger than the Bessel process of dimension 1 which has the same law as $|B_t|$. Here B stands for a 1-dimensional Brownian motion. Which is why the following upper bound holds, for any $y \in [\sqrt{L^2 - \varepsilon}, L]$:

$$(6.32) \quad \begin{aligned} \mathbb{P}_y(\tau_L > \alpha) &\leq \mathbb{P}_{L^\varepsilon}(\tau_L > \alpha) \leq \mathbb{P}_{L^\varepsilon} \left(\sup_{0 \leq t \leq \alpha} |B_t| < L \right), \quad \text{with } L^\varepsilon = \sqrt{L^2 - \varepsilon} \\ &\leq \mathbb{P}_{L^\varepsilon} \left(\sup_{0 \leq t \leq \alpha} B_t < L \right) \leq \mathbb{P}_0 \left(\sup_{0 \leq t \leq \alpha} B_t < L - L^\varepsilon \right) \\ &\leq \mathbb{P}_0 \left(\sup_{0 \leq t \leq \alpha} B_t < \frac{\varepsilon}{L} \right) \leq \frac{\varepsilon}{L\sqrt{2\alpha\pi}}. \end{aligned}$$

By combining (6.31) and (6.32), we have

$$(6.33) \quad F^\varepsilon(t - \alpha) \left(1 - \frac{\varepsilon}{L\sqrt{2\alpha\pi}}\right) \leq F(t) \leq F^\varepsilon(t), \quad t \geq 0.$$

Consequently, Θ_{N^ε} converges to τ_L in distribution as ε goes to 0. This ends the proof. \square

7. Numerical results.

In this section, we will discuss some numerical experiences based on the algorithm for approaching the hitting time (developed in Section 6). A particularly important task in such an iterative method is to estimate the number of steps or even the number of times the uniform random generator is used. The algorithm (NI) presented in Section 6 allows to simulate hitting times for Bessel processes of non integer dimensions $\delta > 1$. We will therefore only present experiences in that context and refer to the previous work [3] for Bessel processes of integer dimensions.

7.1. Number of steps versus ε .

The number of steps of the algorithm is of prime interest. Classical time splitting method in order to simulate particular paths of stochastic processes can be used for classical diffusion processes with regular diffusion and drift coefficients if the study is restricted to some fixed time intervals. Here the diffusion is singular, the classical methods could not be applied, nevertheless the approximation procedure (NI) developed in Section 6 is of a different kind and holds at any given time. That's why we are not able to compare different methods but we will just describe the relevance of (NI) by the estimation of the average number of steps. The algorithm used in order to simulate the hitting time of the level L by the Bessel process, permits obtaining an approximated hitting time Θ_{N^ε} and the corresponding position $M(N^\varepsilon)$ which satisfies:

$$L^2 - (M(N^\varepsilon))^2 \leq \varepsilon.$$

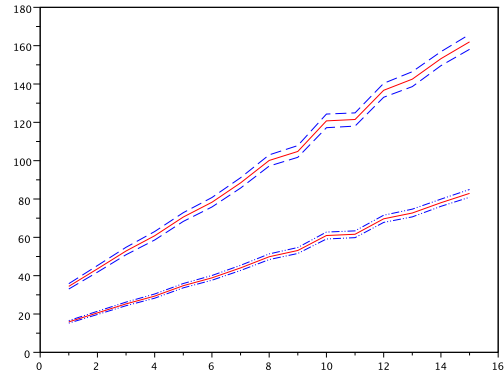
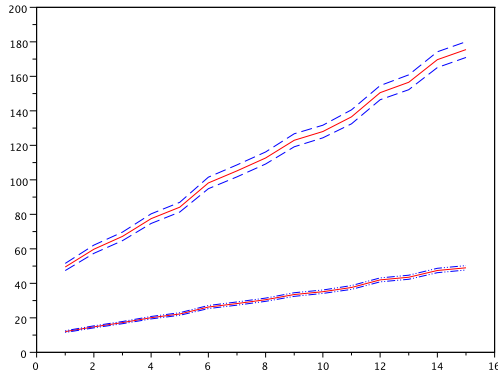
The number of iterations will decrease with respect to the parameter ε . The average number of steps $\mathbb{E}[N^\varepsilon]$ is upper-bounded by the logarithm of ε up to a multiplicative constant (Theorem 6.2). Let us therefore choose different values of ε and approximate through a law of large number this average (we denote by \aleph the number of independent simulations; here $\aleph = 1000$).

$$\varepsilon_k = 0.5^k, \quad k = 1, \dots, 15.$$

The experiences concern two different dimensions for the Bessel process $\delta = 2.2$ and $\delta = 4.7$ and we fix the parameter $\gamma = 0.95$ appearing in the algorithm (NI) (this parameter is fixed for the whole numerical section). Note that each step of the (NI) algorithm is associated to a comparison between particular hitting times $\theta_n^{(1)}$ and $\theta_n^{(2)}$, the first one is associated with a Bessel process of dimension $[\delta]$ and the second one is associated with a Bessel process of dimension $\delta - [\delta]$. In the following we are also interested in the average number of steps $N_{\text{integer}}^\varepsilon$ satisfying

$$N_{\text{integer}}^\varepsilon := \#\{1 \leq n \leq N^\varepsilon : \theta_n^{(1)} < \theta_n^{(2)}\}.$$

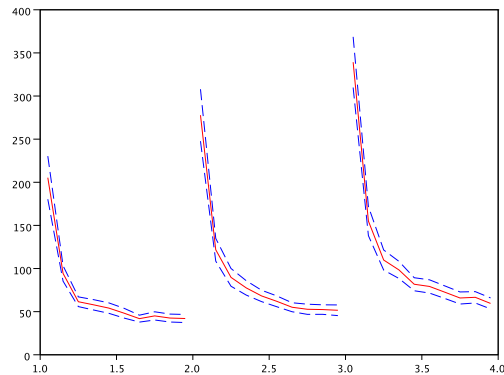
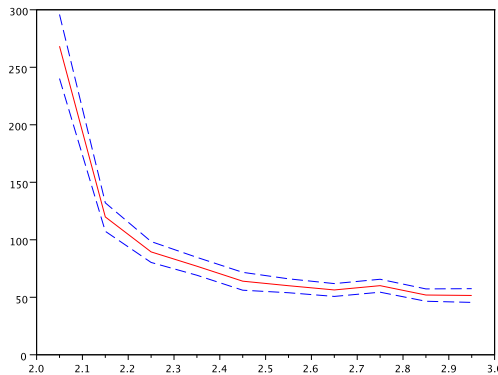
The figures represent both the estimated average number of steps $\mathbb{E}[N^\varepsilon]$ and its confidence interval (three upper curves) and the estimated average number $\mathbb{E}[N_{\text{integer}}^\varepsilon]$ and its 95%-confidence interval (three lower curves).



Average number of steps versus k for $\delta = 2.2$ and $\delta = 4.7$

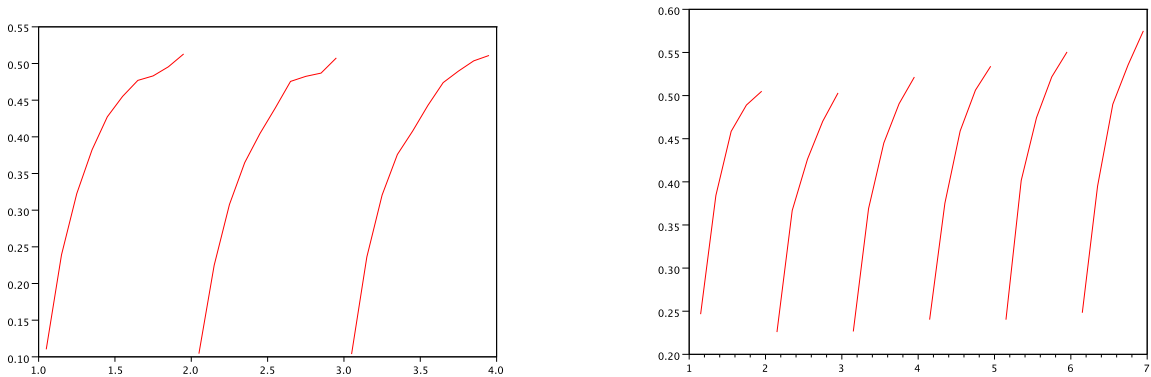
7.2. *Number of steps versus the dimension of the Bessel process.*

In [3], the authors pointed out that the number of steps increases as the dimension of the integer Bessel process becomes larger. Let us focus our attention on the non-integer case. We observe some surprising effects in respect to the dimension: on one hand if $\lfloor \delta \rfloor$ is fixed and the dimension increases then the average number of steps decreases, on the other hand if $\delta - \lfloor \delta \rfloor$ is fixed and the dimension increases, as does the number of steps. For the simulation we set $\aleph = 100$, $\varepsilon = 0.01$ and the level height $L = 5$.



Average number of step versus δ

Now observe the averaged proportion $\mathbb{E}[N_{\text{integer}}^\varepsilon / N^\varepsilon]$ as the dimension of the Bessel process increases. It is obvious that this proportion seems to depend mainly on the fractional part of the dimension...



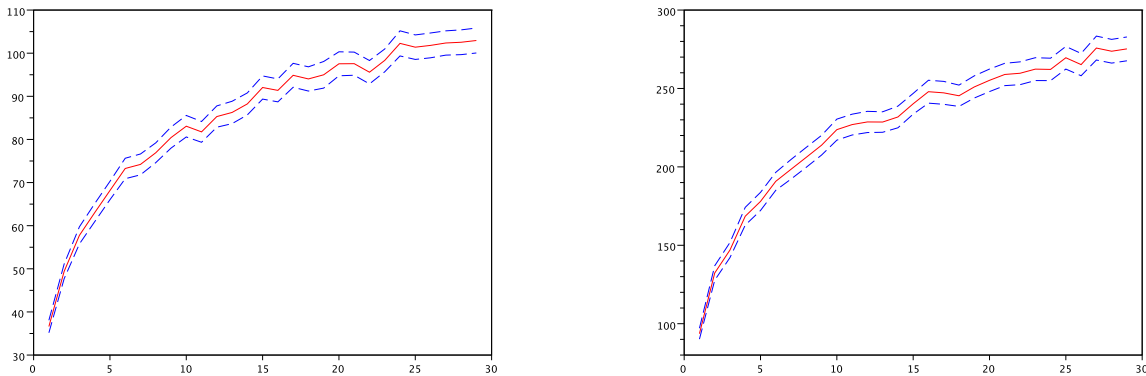
Averaged proportion $\mathbb{E}[N_{\text{integer}}^\varepsilon/N^\varepsilon]$ versus δ .

7.3. Number of steps versus the level height.

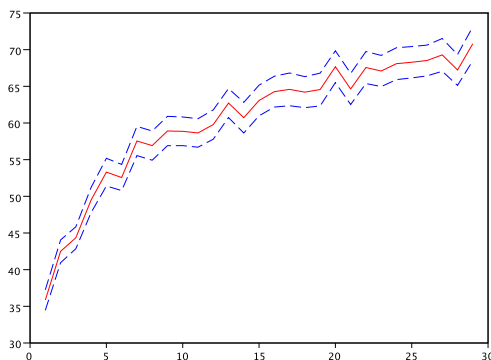
In the previous simulations the level height to reach was always equal to 5. Let us now present the dependence of the number of steps with respect to this level. The numerical results are obtained for $\aleph = 1000$, $\varepsilon = 0.01$ and two different Bessel processes (of dimension $\delta = 3.8$ and 5.2). Let us note that this dependence is sub-linear and quite weak, the dimension of the Bessel seems to play a more important role. Observe also that ε is an upper-bound of $L^2 - (M(N^\varepsilon))^2$. We deduce that

$$L - M(N^\varepsilon) \leq \frac{\varepsilon}{2L},$$

and therefore the error of the approximation becomes smaller as L becomes larger. This particular remark is also emphasized by the dependence of L in the bounds (6.33). Which is why we present a third figure for which ε/L is fixed and equal to 0.01.



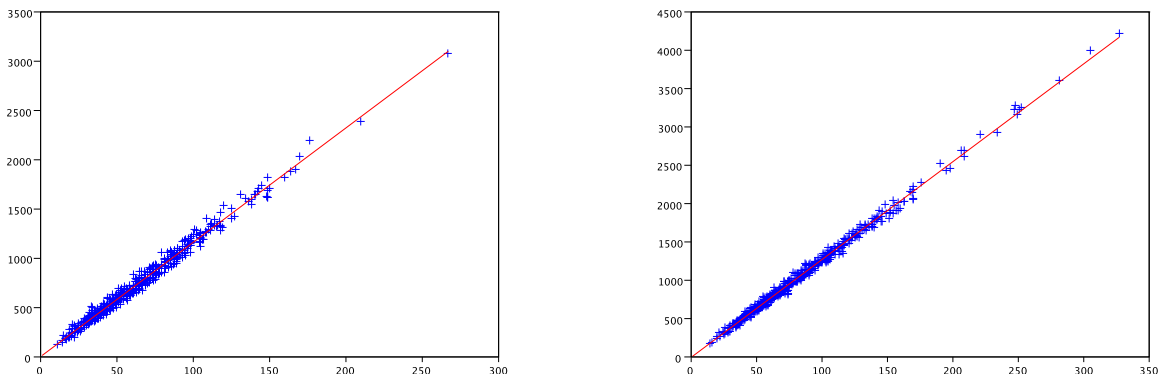
Averaged number of step versus the level L (dimension $\delta = 3.8$ and $\delta = 5.2$)



Averaged number of steps versus L for fixed ε/L and $\delta = 3.8$

7.4. Number of generated random variables.

Finally let us study the number of random variables used in the simulation of the Bessel hitting times. Each step of the algorithm (NI) requires a lot of uses of the uniform random generator in order to simulate the first coordinate of the uniform variable on the sphere of dimension $[\delta]$, the Gamma distributed variable which appears in the simulation of the hitting times of curved boundaries (here we use Johnk's algorithm, see for instance [4], page 418), and finally the rejection method for the condition law described in the *Realization of the algorithm*. The following figures concern simulations with the parameters $L = 5$ and $\varepsilon = 0.01$



Number of random variables required versus number of steps for $\delta = 2.5$ and $\delta = 4.8$

Let us end the numerical section by noting that the algorithm (NI) is quite difficult to use when the fractional part of the dimension δ i.e. $\delta - [\delta]$ is small, the number of steps becomes huge. Moreover, the parameter γ appearing in the algorithm (NI) is needed for technical reason and influences the number of steps, so we suggest choosing γ as close as possible to 1.

References.

- [1] Z. Ciesielski and S. J. Taylor. First passage times and sojourn times for brownian motion in space and the exact hausdorff measure of the sample path. *Trans. Amer. Math. Soc.*, 103:434–450, 1962.

- [2] H. E. Daniels. The minimum of a stationary Markov process superimposed on a U -shaped trend. *J. Appl. Probability*, 6:399–408, 1969.
- [3] M. Deaconu and S. Herrmann. Hitting time for Bessel processes - Walk on Moving Spheres Algorithm (WOMS). *The Annals of Applied Probability*, 23(6):2259–2289, 2013.
- [4] L. Devroye. *Non-Uniform Random Variate Generation*. Springer-Verlag, New York, 1986.
- [5] J. Durbin. The first-passage density of a continuous Gaussian process to a general boundary. *J. Appl. Probab.*, 22(1):99–122, 1985.
- [6] Emmanuel Gobet. Euler schemes and half-space approximation for the simulation of diffusion in a domain. *ESAIM Probab. Statist.*, 5:261–297 (electronic), 2001.
- [7] Emmanuel Gobet and Stéphane Menozzi. Stopped diffusion processes: boundary corrections and overshoot. *Stochastic Process. Appl.*, 120(2):130–162, 2010.
- [8] Yuji Hamana and Hiroyuki Matsumoto. The probability distributions of the first hitting times of Bessel processes. *Trans. Amer. Math. Soc.*, 365(10):5237–5257, 2013.
- [9] Tomoyuki Ichiba and Constantinos Kardaras. Efficient estimation of one-dimensional diffusion first passage time densities via Monte Carlo simulation. *J. Appl. Probab.*, 48(3):699–712, 2011.
- [10] Monique Jeanblanc, Marc Yor, and Marc Chesney. *Mathematical methods for financial markets*. Springer Finance. Springer-Verlag London Ltd., London, 2009.
- [11] Hans Rudolf Lerche. *Boundary crossing of Brownian motion*, volume 40 of *Lecture Notes in Statistics*. Springer-Verlag, Berlin, 1986. Its relation to the law of the iterated logarithm and to sequential analysis.
- [12] J. R. Norris. *Markov chains*, volume 2 of *Cambridge Series in Statistical and Probabilistic Mathematics*. Cambridge University Press, Cambridge, 1998. Reprint of 1997 original.
- [13] Daniel Revuz and Marc Yor. *Continuous martingales and Brownian motion*, volume 293 of *Grundlehren der Mathematischen Wissenschaften [Fundamental Principles of Mathematical Sciences]*. Springer-Verlag, Berlin, 1991.
- [14] Daniel Revuz and Marc Yor. *Continuous martingales and Brownian motion*, volume 293 of *Grundlehren der Mathematischen Wissenschaften [Fundamental Principles of Mathematical Sciences]*. Springer-Verlag, Berlin, third edition, 1999.
- [15] Tokuzo Shiga and Shinzo Watanabe. Bessel diffusions as a one-parameter family of diffusion processes. *Z. Wahrscheinlichkeitstheorie und Verw. Gebiete*, 27:37–46, 1973.

M. DEACONU
 PROJECT TEAM TOSCA, INRIA NANCY GRAND-EST
 INSTITUT ELIE CARTAN DE LORRAINE - UMR 7502
 NANCY-UNIVERSITÉ, CNRS, INRIA
 B.P. 70239, 54506 VANDOEUVRE-LÈS-NANCY CEDEX, FRANCE
 E-MAIL: Madalina.Deaconu@inria.fr

S. HERRMANN
 INSTITUT DE MATHÉMATIQUES DE BOURGOGNE - UMR 5584
 UNIVERSITÉ DE BOURGOGNE, B.P. 47 870
 21078 DIJON CEDEX, FRANCE
 E-MAIL: Samuel.Herrmann@u-bourgogne.fr