



**HAL**  
open science

## Extension of the match-mismatch hypothesis to predator-controlled systems

Joël Durant, D.O. Hjermann, T. Falkenhaus, Dian J Gifford, Lars Johan Naustvoll, Barbara K Sullivan, Gregory Beaugrand, Nils C Stenseth

► **To cite this version:**

Joël Durant, D.O. Hjermann, T. Falkenhaus, Dian J Gifford, Lars Johan Naustvoll, et al.. Extension of the match-mismatch hypothesis to predator-controlled systems. *Marine Ecology Progress Series*, 2013, 474, pp.43-52. 10.3354/meps10089 . hal-00929051

**HAL Id: hal-00929051**

**<https://hal.science/hal-00929051v1>**

Submitted on 10 May 2021

**HAL** is a multi-disciplinary open access archive for the deposit and dissemination of scientific research documents, whether they are published or not. The documents may come from teaching and research institutions in France or abroad, or from public or private research centers.

L'archive ouverte pluridisciplinaire **HAL**, est destinée au dépôt et à la diffusion de documents scientifiques de niveau recherche, publiés ou non, émanant des établissements d'enseignement et de recherche français ou étrangers, des laboratoires publics ou privés.



Distributed under a Creative Commons Attribution 4.0 International License

# Extension of the match-mismatch hypothesis to predator-controlled systems

Joël M. Durant<sup>1,\*</sup>, Dag Ø. Hjermann<sup>1,7</sup>, Tone Falkenhaus<sup>2</sup>, Dian J. Gifford<sup>3</sup>,  
Lars-Johan Naustvoll<sup>2</sup>, Barbara K. Sullivan<sup>3</sup>, Grégory Beaugrand<sup>4,5</sup>,  
Nils Chr. Stenseth<sup>1,2,6</sup>

<sup>1</sup>Centre for Ecological and Evolutionary Synthesis (CEES), Department of Biosciences, University of Oslo, PO Box 1066 Blindern, 0316 Oslo, Norway

<sup>2</sup>Institute of Marine Research, Flødevigen Marine Research Station, 4817 His, Norway

<sup>3</sup>Graduate School of Oceanography, University of Rhode Island, Narragansett, Rhode Island 02882, USA

<sup>4</sup>Centre National de la Recherche Scientifique (CNRS), Laboratoire d'Océanologie et de Géosciences, UMR LOG CNRS 8187, Université des Sciences et Technologies Lille, 1 BP 80, 62930 Wimereux, France

<sup>5</sup>Sir Alister Hardy Foundation for Ocean Science, The Laboratory, Citadel Hill, Plymouth PL12PB, UK

<sup>6</sup>University of Agder, 4604 Kristiansand, Norway

<sup>7</sup>Present address: Norwegian Institute for Water Research (NIVA) Gaustadalléen 21, 0349 Oslo, Norway

**ABSTRACT:** Differential change in the phenology of predators and prey is a potentially important climate-mediated mechanism influencing populations. The match-mismatch hypothesis describes the effect of predator-prey population synchrony on predator development and survival and is used to describe climate effects on ecological patterns and processes in prey-controlled terrestrial and marine ecosystems. We evaluated the hypothesis by considering the broader effects of predator-prey synchrony on prey standing stock and survival in addition to its well documented effects on the predator. Specifically, we suggest that an increase in asynchrony between predator and prey peak abundance can lead to increased survival and potentially increased recruitment of the prey in some systems. Using generalized additive models, we demonstrated that the match-mismatch hypothesis can be used not only for prey-controlled systems, but also for predator-controlled systems.

**KEY WORDS:** Predator-prey interaction · Recruitment · Trophic control · Top-down · Bottom-up · Narragansett Bay · Skagerrak · North Sea

Resale or republication not permitted without written consent of the publisher

## INTRODUCTION

Aquatic trophic webs have been studied intensively with respect to how interactions between consumers and their food resources affect species composition and abundance. Different types of control have been suggested (reviewed by Cury et al. 2008). Because biological populations fundamentally depend on food, it is expected that regulation will occur primarily by bottom-up control, that is, regulation of higher trophic levels by lower trophic levels. However, top-down control by upper level predators can

compensate for, or locally override, bottom-up control (Sinclair & Krebs 2002). The match-mismatch hypothesis (MMH) (Cushing 1969, 1990) states that the system, or at least important components of it such as fish stocks, is controlled by the availability of prey during the critical life-history phase prior to when fish recruit to the population (Fig. 1a). The MMH as originally formulated posits that if the most food-limited stage of predator development occurs at the same time as the peak availability of prey, recruitment will be high. In contrast, if there is a mismatch between food requirement and prey availabil-

\*Email: j.m.durant@ibv.uio.no

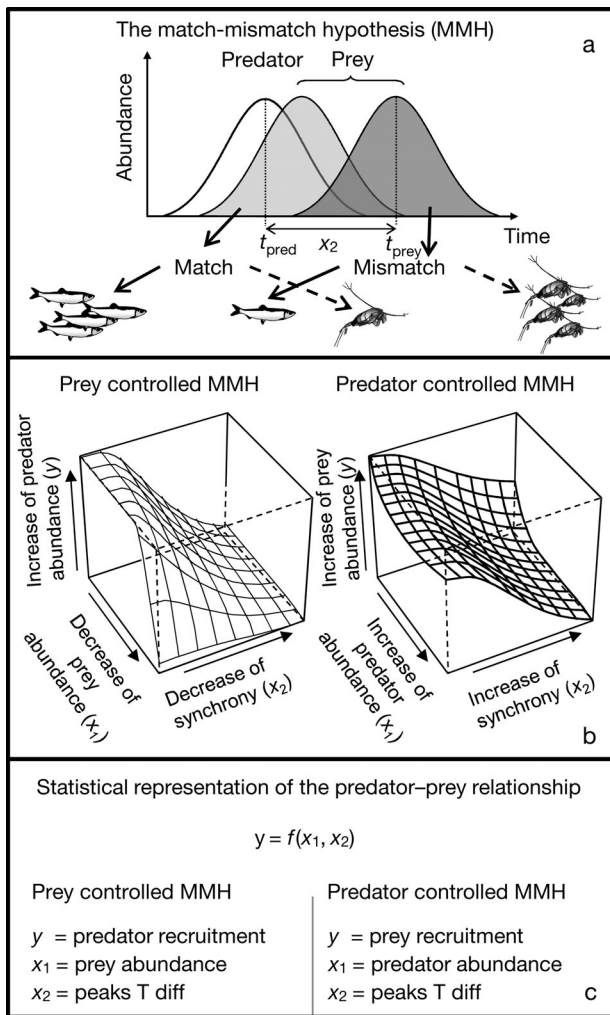


Fig. 1. The match-mismatch hypothesis (MMH) for the 2 models evaluated. (a) Cushing's (1969, 1990) MMH based on time synchrony between predator (pred) and prey (prey) ( $t_{\text{pred}} - t_{\text{prey}} = x_2$ , the peaks time difference, Peaks T diff). Arrows indicate opposite results for predators (solid arrows) and prey (dashed arrows). (b) MMHs with prey (left) and predator (right) control. In addition to the time component ( $x_2 = \text{Peaks T diff}$ ) prey abundance ( $x_1$ , left, similar to Durant et al. 2005) and predator abundance ( $x_1$ , right) was added. (c) The 2 statistical representations of the MMH,  $y = f(x_1, x_2)$ .  $f$  can be either a linear function or a nonparametric smoothing function  $s$  (see Table 1)

ity, predator survival and recruitment are likely to be low (Durant et al. 2007).

While the assumption of bottom-up control appears to be valid for the original setting—zooplankton prey are abundant and available to larval fish for a limited period—applying the MMH more broadly requires examination of the direction of the effects. If the trophic interactions between predators and prey are symmetric, a high degree of match between the two

implies negative effects on prey and positive effects on the predator. In this case, we would expect prey populations to be selected for a timing of their spawning/reproduction that minimizes exposure of the resulting young to predators (Bollens et al. 1992), while the predators have an opposing selection pressure. In some cases, timing of reproduction may be locked in by environmental factors such as day length and is thus fixed inter-annually, as suggested for fish spawning time. One can also envision cases where bottom-up and top-down forces vary between years or seasons, e.g. due to time lags between predation events and the numerical response of predators (Sinclair & Krebs 2002).

Our objective is to extend the original prey-controlled MMH to predator-controlled systems. Here, we do this by investigating the effect of the synchrony between predator and prey on both predator abundance and prey abundance in 3 different marine ecosystems. First, we model the predator-prey relationship as prey-controlled systems and secondly as predator-controlled systems. We then systematically examine model scenarios for the effects of bottom-up and top-down ecosystem processes on predator/prey pairs (Fig. 1). To do this, we apply statistical models to predator-prey interaction data from 3 north Atlantic marine ecosystems: an estuary, a shelf sea, and a coastal ecosystem.

## MATERIALS AND METHODS

### Marine ecosystems

The predator-prey pairs used as examples are known to be linked and come from 3 very different marine pelagic environments. Narragansett Bay, Rhode Island, USA, is a shallow, well-mixed estuary located on the northwest side of Rhode Island Sound in the northwest Atlantic. It covers 324 km<sup>2</sup> at mean low water and has an average depth of <10 m. The Skagerrak is a transitional area between the saline North Sea and the more brackish Kattegat. The Skagerrak has an area of 32000 km<sup>2</sup> and a mean depth of 210 m. The North Sea is a marginal sea of the Atlantic Ocean located on the European continental shelf that has been the location of economically important fisheries for centuries. It has an area of ~750000 km<sup>2</sup> and a mean depth of 90 m. The 3 regions are characterized by strong seasonal gradients in light, nutrients and temperature that combine to force the seasonal patterns in plankton abundance characteristic of temperate and boreal waters.

### Predator-prey pairs

The pairs were chosen for their known relationships and for accessibility of data. The Narragansett Bay system is near the northern distribution limit of the ctenophore *Mnemiopsis leidyi*, which is not an invasive species in this region, in contrast to European waters. The calanoid copepod *Acartia tonsa* is its major prey (Costello et al. 2006a, Costello et al. 2006b). In Skagerrak, the calanoid copepods *Calanus finmarchicus* and *C. helgolandicus* dominate the dry weight of the mesozooplankton and are known to graze on phytoplankton. *C. helgolandicus* is the dominant large copepod in the northern Skagerrak/North Sea. In the North Sea system, larval and juvenile Atlantic cod, *Gadus morhua*, feed primarily on the calanoid copepods *C. finmarchicus* and *Pseudocalanus* spp. (Heath & Lough 2007).

### Data sources

In the Narragansett Bay estuary, data on the standing stocks of *Mnemiopsis leidyi* and *Acartia tonsa* were collected at 2 locations in 2001–2003 and at 1 location in 2001–2004 (Costello et al. 2006a, Costello et al. 2006b). In the Skagerrak system, chlorophyll *a* (chl *a*) was sampled 3 times weekly during 1994–2008 at the Flødevigen station (on the Norwegian Skagerrak coast), which is representative of the coastal waters of Northern Skagerrak (Dahl & Johannessen 1998), while the copepods *Calanus finmarchicus* and *C. helgolandicus* were sampled twice monthly 1 nautical mile offshore from the station (for details of both sampling programs, see Johannessen et al. 2011). In the North Sea system, estimates of larval and juvenile cod abundances during 1988–2006, derived from virtual population analysis (see method in Lassen & Medley 2001), were obtained from ICES ([www.ices.dk](http://www.ices.dk)) and log-transformed. North Sea copepod data are from the Continuous Plankton Recorder Survey, an upper layer monitoring program that has operated on a monthly basis since 1946 (Reid et al. 2003).

### Calculation of peaks time difference

The time coordinate of the centre of gravity was estimated for each variable and each year (Durant et al. 2005) in the 3 systems. The peaks time difference (Peaks T diff), expressed in days, was then cal-

culated as the difference between the dates of maximum predator and prey abundance (i.e. predator peak time – prey peak time or  $x_2 = t_{\text{pred}} - t_{\text{prey}}$  in Fig. 1a). When Peaks T diff = 0, the 2 peaks were synchronous, and when Peaks T diff = <0, the prey appeared in the system after the predator (see also Fig. 2). Note that 0 indicates full synchrony but not necessarily a full match situation, because several days may be necessary to reach it—e.g. time is needed for a larval fish to exhaust its yolk sac (see Laurel et al. 2011). For the Skagerrak system, we calculated the Peaks T diff between the peak of *Calanus* (separately for *C. finmarchicus* and *C. helgolandicus*) and the first peak of chl *a*. Because it was not possible to obtain exact dates for North Sea cod, we assumed that they spawned in March (Brander 1994) and that hatching occurred a month later (Laurel et al. 2011).

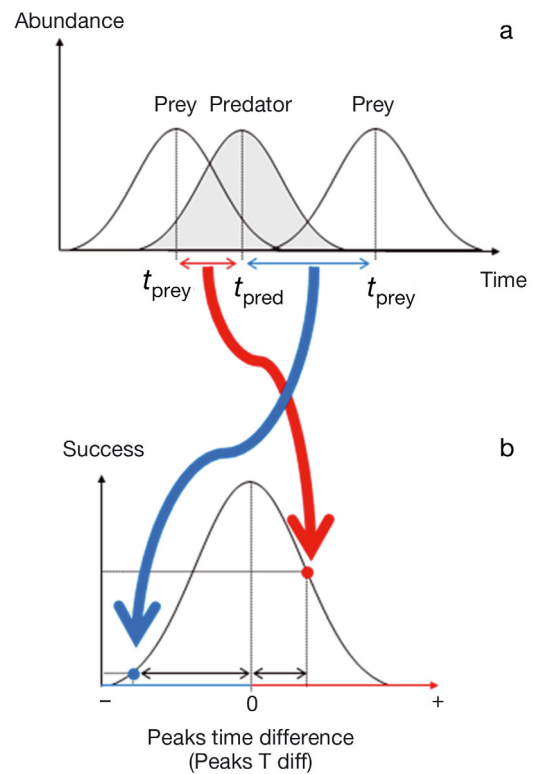


Fig. 2. Calculation of the peaks time difference (Peaks T diff  $t_{\text{pred}} - t_{\text{prey}}$ ) between predator and prey. (a) 2 situations of prey phenology related to a predator phenology. Red: a case when prey appear before predators (Peaks T diff > 0). Blue: a case when prey appear after predators (Peaks T diff < 0). (b) Changes in Peaks T diff for a prey-controlled model. When the 2 peaks are synchronous (Peaks T diff = 0) the predator recruitment ('Success' in the plot) is at maximum

### Predator-prey models

We examined 2 statistical representations of the predator-prey relationship (Fig. 1c) following the general structure  $Y_t = \alpha + s_i(X_t) + \varepsilon_t$ , where  $s$  is a non-parametric smoothing function specifying the effect of the covariates  $X_i$  on the dependent variable  $Y$  in year  $t$ ,  $\alpha$  is the intercept, and  $\varepsilon$  is a stochastic noise term. In the generalized additive model (GAM) formulation (see below)  $X$  can be either  $x_1$ ,  $x_2$  or an

interaction term  $(x_1, x_2)$ . The interaction between  $x_1$  and  $x_2$  defines a space where  $x_1$  cannot affect  $Y$  without  $x_2$  and the converse.

The prey-controlled model is the bottom-up, prey-controlled MMH where  $Y$  = predator recruitment,  $x_1$  = prey abundance, and  $x_2$  = Peaks T diff.

The predator-controlled model is the top-down, predator-controlled MMH where  $Y$  = prey recruitment,  $x_1$  = predator abundance, and  $x_2$  = Peaks T diff.

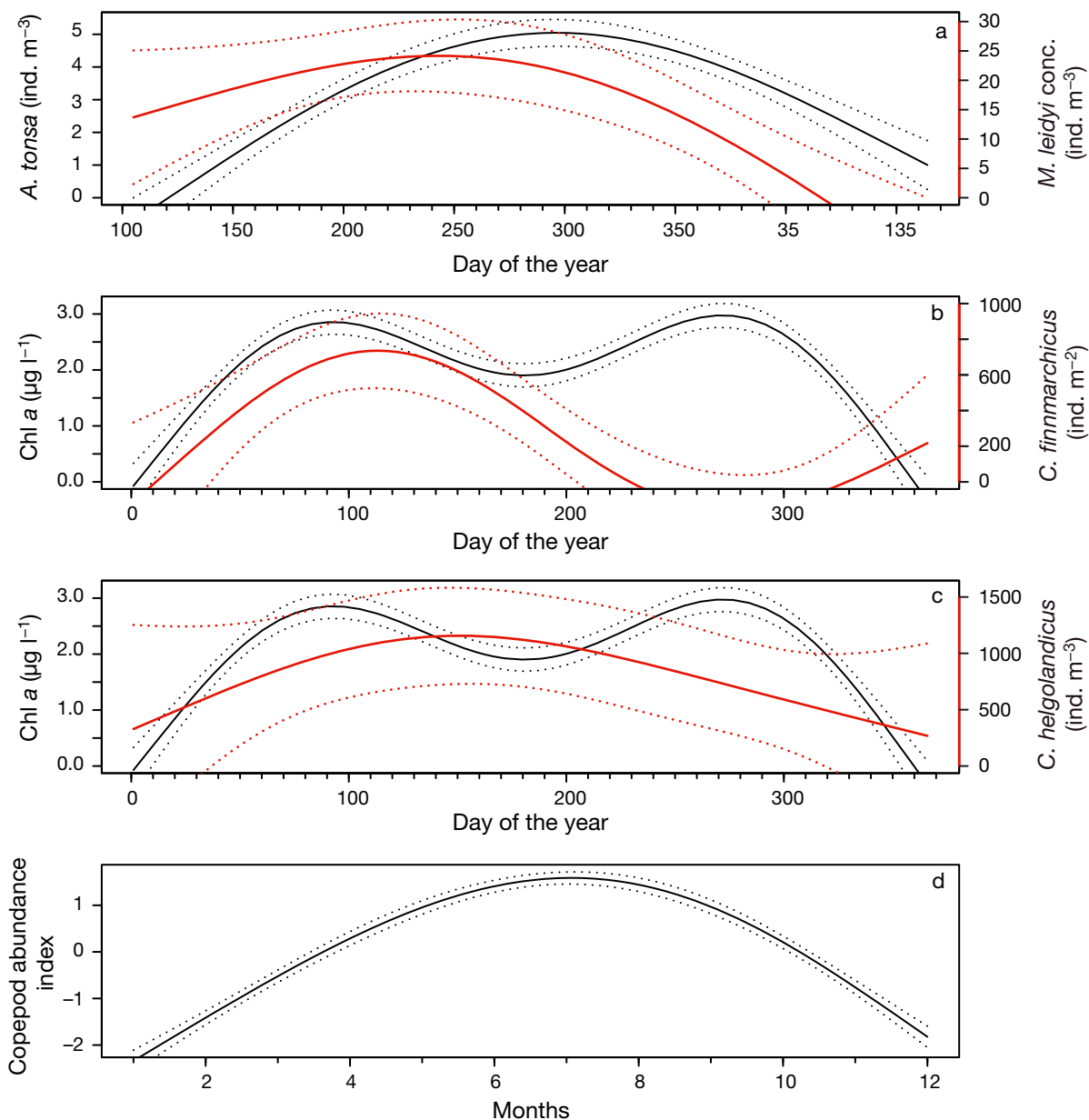


Fig. 3. Phenologies of the 3 systems. Solid lines: averages; dotted lines: SD. Red lines: prey; black lines: predators. (a) Narragansett Bay system, (b) and (c) Skagerrak system, (d) North Sea system (the North Sea cod eggs are assumed to hatch in April)

Time series of predator abundance, prey abundance and the Peaks T diff between predator and prey (as individual species or species groups) were used to test both models in the 3 study systems.

### Model testing

We tested the 2 models (prey-controlled and predator-controlled) using a GAM (Wood & Augustin 2002, R Development Core Team 2010), as implemented in the *mgcv* library of R 2.11.1, correcting for overdispersion. The model selection was based on minimization of the generalized cross validation (GCV) score, and a measure of the model predictive squared error, the adjusted  $R^2$ . Generalized cross validation is a proxy for the model's out-of-sample predictive performance, analogous to the Akaike's Information Criterion. This is the model selection procedure that is most appropriate for GAM analysis approaches (Wood & Augustin 2002, Wood 2011). The GAM procedure automatically chooses the degrees of freedom of the smoothing function  $s$  (i.e. the degree of linearity of the curve) based on the GCV score. However, to avoid spurious and ecologically implausible relationships, we constrained the model to be at maximum a quadratic relationship. There was no temporal autocorrelation (using autocorrelation function ACF) in the residuals of the models.

#### The Narragansett Bay system

The abundance of *Acartia tonsa* and *Mnemiopsis leidyi* (number of individuals  $m^{-3}$ ) was expressed in the models as the annual maximum value observed. A factor variable (Spot) was added to account for the potential effect of the 3 locations where the data were collected (i.e.  $Y_t = \alpha + s(X_t) + Spot_t + \epsilon_t$ ).

#### The Skagerrak system

There are 2 chl *a* blooms per year in the bay (Fig. 3b,c): the first is dominated by diatoms and the second by dinoflagellates. Here we consider only the spring bloom occurring between January and July (days of the year between 0 and 180) because it occurs closer to the peaks of both *Calanus* species. Because the abundance data for *C. finmarchicus* and *C. helgolandicus* exhibited a number of brief peaks during its season, we used the average of the 5 high-

est abundance values to minimize this variability in the models.

#### The North Sea system

For the prey-controlled model, recruitment was taken as the number of 1-year-old cod in the following year (CodRecr); for the predator-controlled model, recruitment was the sum of 1- and 2-year-old cod (CodAbun). One- to 2-year-old cod correspond to the age classes that prey on copepods, while the older cod feed on other species such as small fish and adult decapods. Both CodRecr and CodAbun were log-transformed. The plankton index of Beaugrand et al. (2003) was used to describe larval cod survival. This index is the first principal component calculated from a principal component analysis performed on long-term monthly abundance of *Calanus finmarchicus*, *C. helgolandicus*, *Pseudocalanus* spp., euphausiids, total biomass of calanoids and mean size of calanoid copepods between March and September. For the predator-controlled model, we used the maximum plankton index value recorded between March and September (CopeIndMax) as an index of copepod abundance to estimate the annual copepod maximum. For the prey-controlled model, the annual average of the plankton index (CopeIndAv, cod consuming copepods throughout the entire annual cycle) was used.

## RESULTS

### The Narragansett Bay system

#### Prey-controlled model

The abundance of ctenophore *Mnemiopsis leidyi* was affected by the time between the ctenophore maximum and maxima of *Acartia tonsa* (Fig. 4a, Table 1). However, this model is suspicious because the quadratic shape is due to only 2 data points (Fig. 4a). This model was also significant when the abundance of *A. tonsa* was included in the analysis.

#### Predator-controlled model

The abundance of *Acartia tonsa* was positively affected by an increased time difference between the peaks of the ctenophore and *A. tonsa* (Fig. 4b, Table 1). The model was not significantly improved by including the abundance of the ctenophore.

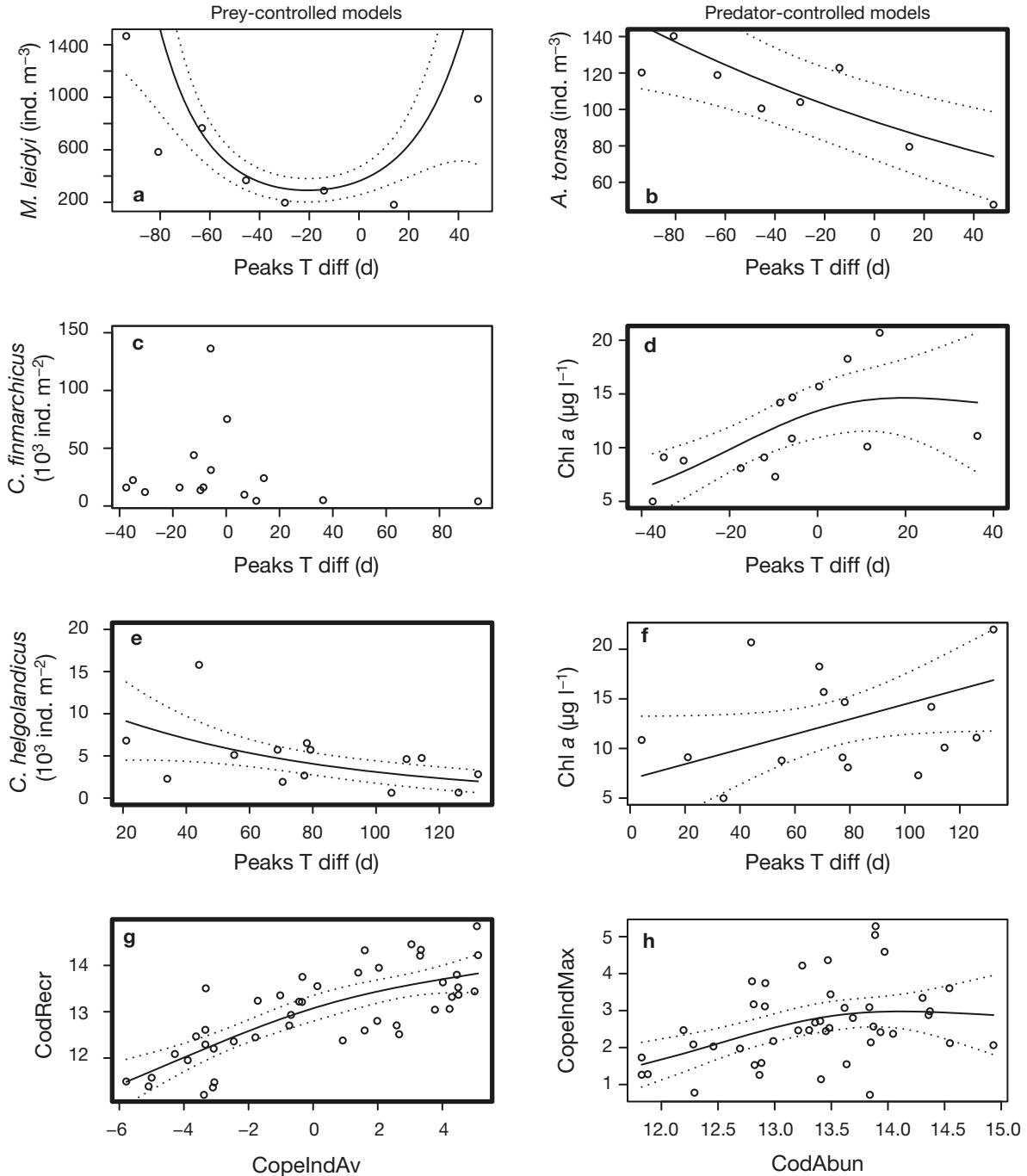


Fig. 4. Results from generalized additive models (GAMs) of the 4 prey/predator pairs. (a, b) Narragansett Bay, (c–f) Skagerrak, (g, h) the North Sea. Plots with a **bold** outline correspond to the most significant fit of the GAM models. For all peaks time difference (Peaks T diff) axes, 0 indicates full synchrony and a high absolute value indicates high asynchrony (see Fig. 2 and 'Materials and methods'). (a) Ctenophore/copepodite pair where y-axis is *Mnemiopsis leidy* abundance and x-axis is Peaks T diff with copepod prey. (b) Copepod/ctenophore pair where y-axis is *Acartia tonsa* abundance. (c) Copepod/chl *a* pair where y-axis is *Calanus finmarchicus* abundance and x-axis is Peaks T diff with the first bloom of chl *a*. (d) Chl *a*/copepod pair where y-axis is chl *a* concentration of the first chl *a* bloom. (e) Copepod/chl *a* pair where y-axis is *C. helgolandicus* abundance and x-axis is Peaks T diff with the first bloom of chl *a*. (f) Chl *a*/copepod pair where y-axis is chl *a* concentration of the second chl *a* bloom. (g) Cod/copepod pair where y-axis is log-transformed cod recruitment (CodRecr) and x-axis is the CopeIndAv. (h) Copepod/cod pair where y-axis is the CopeIndMax index and x-axis is log-transformed cod abundance (CodAbun). For (g) CopeIndAv: average maximum plankton index value and for (h) CopeIndMax: maximum plankton index value. Note that (e) and (f) present only the Peaks T diff effect of the most significant models; a complete figure would include a third axis representing the chl *a* effect (in [e]) and the abundance of *C. helgolandicus* effect (in [f])

Table 1. Results of the generalized additive models of the relationship between predator-prey abundances and peaks time difference. Models are written  $Y_t = \alpha + s(X_t) + \varepsilon_t$ , with  $s$ , a nonparametric smoothing function specifying the effect of the covariates  $X$  on the dependent variable  $Y$  for year  $t$ ;  $\alpha$ , intercept; and  $\varepsilon$ , stochastic noise term.  $X_t = (\text{Acartia tonsa}_t, \text{Peaks T diff}_t)$  corresponds to an interaction term. For the models without interaction (e.g.  $X_t = \text{Peaks T diff}_t$ ), the general sense of the relationship is indicated with + or – (where both symbols are used, this indicates a quadratic relationship) as is the p-value and the generalized cross validation (GCV) score. Significant p-values are shown in **bold**. The plot of Fig. 4 is given for the selected models. Peaks T diff: peaks time difference; chl  $a$ : chlorophyll  $a$  concentration; CodRecr:  $\ln(\text{cod recruitment})$ ; CopeIndAv: average maximum plankton index value; CopeIndMax: maximum plankton index value; CodAbun:  $\ln(\text{cod abundance})$

System	$Y_t$	Explanatory variables, $X_t$	n	Fig. 4	p	Adjusted R <sup>2</sup>	GCV	
Narragansett Bay	<b>Prey-controlled</b> <i>Mnemiopsis leidyi</i> <sub><i>t</i></sub>	Peaks T diff <sub><i>t</i></sub>	–,+	8	a	<b>0.024</b>	0.87	127
		( <i>Acartia tonsa</i> <sub><i>t</i></sub> , Peaks T diff <sub><i>t</i></sub> )		8		0.063	0.94	112
		<i>A. tonsa</i> <sub><i>t</i></sub>	+	8		0.401	0.35	574
		NULL		8			0.04	518
		<b>Predator-controlled</b>						
	<i>A. tonsa</i> <sub><i>t</i></sub>	Peaks T diff <sub><i>t</i></sub>	–	8	b	<b>0.020</b>	0.91	2.5
		<i>M. leidyi</i> <sub><i>t</i></sub>	+	8		0.472	0.28	15.6
		( <i>M. leidyi</i> <sub><i>t</i></sub> , Peaks T diff <sub><i>t</i></sub> )		8		0.672	0.18	24.1
		NULL		8			0.15	13.0
		<b>Prey-controlled</b>						
Skagerrak	<i>Calanus finmarchicus</i> <sub><i>t</i></sub>	Peaks T diff <sub><i>t</i></sub>	–	15		0.522	0	33937
		Chl $a_t$	+/-	15		0.377	0	34481
		(Chl $a_t$ , Peaks T diff <sub><i>t</i></sub> )		15		0.660	0	40688
		NULL		15	c		0	32462
		<b>Predator-controlled</b>						
	Chl $a_t$	Peaks T diff <sub><i>t</i></sub>	+	14	d	<b>0.036</b>	0.38	1.224
		( <i>C. finmarchicus</i> <sub><i>t</i></sub> , Peaks T diff <sub><i>t</i></sub> )		14		0.145	0.19	1.623
		<i>C. finmarchicus</i> <sub><i>t</i></sub>	+	14		0.761	0.08	2.084
		NULL		14			0	1.790
		<b>Prey-controlled</b>						
Skagerrak	<i>Calanus helgolandicus</i> <sub><i>t</i></sub>	(Chl $a_t$ , Peaks T diff <sub><i>t</i></sub> )		14	e	<b>0.008</b>	0.63	1700
		Peaks T diff <sub><i>t</i></sub>	–	14		0.070	0.14	2518
		Chl $a_t$	+	14		0.098	0.13	2666
		NULL		14			0	2869
		<b>Predator-controlled</b>						
	Chl $a_t$	( <i>C. helgolandicus</i> <sub><i>t</i></sub> , Peaks T diff <sub><i>t</i></sub> )		15	f	0.109	0.25	25.64
		Peaks T diff <sub><i>t</i></sub>	+	15		0.400	0.02	27.40
		<i>C. helgolandicus</i> <sub><i>t</i></sub>	+/-	15		0.666	0.01	30.03
		NULL		15			0	30.27
		<b>Prey-controlled</b>						
North Sea	CodRecr <sub><i>t+1</i></sub>	CopeIndAv <sub><i>t</i></sub>	+	45	g	<b>&lt;0.001</b>	0.55	0.031
		(CopeIndAv <sub><i>t</i></sub> , Peaks T diff <sub><i>t</i></sub> )		45		<b>&lt;0.001</b>	0.54	0.032
		Peaks T diff <sub><i>t</i></sub>	+	45		<b>0.006</b>	0.15	0.059
		NULL		45			0	0.067
		<b>Predator-controlled</b>						
	CopeIndMax <sub><i>t</i></sub>	CodAbun <sub><i>t</i></sub>	+	44	h	<b>0.015</b>	0.15	0.393
		(CodAbun <sub><i>t</i></sub> , Peaks T diff <sub><i>t</i></sub> )		44		<b>0.037</b>	0.09	0.424
		Peaks T diff <sub><i>t</i></sub>	+	45		0.205	0.01	0.461
		NULL		45			0	0.457
		<b>Prey-controlled</b>						

### The Skagerrak system

#### Prey-controlled models

No significant model explained the changes of *Calanus finmarchicus* abundance (Table 1). The best model selected by GCV was the null model (Fig. 4c).

The abundance of *Calanus helgolandicus* was explained by the interaction between Peaks T diff and the magnitude of the chl  $a$  bloom (Table 1). The increase of the time between the 2 peaks led to a lower abundance of *C. helgolandicus* (Fig. 4e) while the increase of chl  $a$  had a positive effect on the abundance of *C. helgolandicus*.



#### Predator-controlled model

The concentration of chl *a* was affected by the interaction between Peaks T diff and maximum abundance of *Calanus finmarchicus* (Table 1): greater abundance of *C. finmarchicus* led to a lower chl *a* bloom. The Peaks T diff spanned between –40 and +40 d. The chl *a* bloom was smallest when *C. finmarchicus* reached maximum abundance 40 d before the chl *a* maximum (Fig. 4d).

When considering *Calanus helgolandicus*, no significant model explained chl *a* changes (Table 1). The best model selected by GCV used the interaction between Peaks T diff and the maximum abundance of *C. helgolandicus*, with a positive effect of an increase in Peaks T diff (Fig. 4f).

### The North Sea system

#### Prey-controlled model

Cod recruitment (CodRecr) was influenced positively by the indicator CopeIndAv (Fig. 4g, Table 1). The model was not significantly improved by adding the time component. The Peaks T diff alone affected cod recruitment positively, but not strongly.

#### Predator-controlled model

Copepod abundance (CopeIndMax) was affected positively by cod abundance (CodAbun) (Fig. 4h, Table 1). The model was not improved significantly by adding the Peaks T diff. The Peaks T diff alone did not affect copepod abundance significantly.

## DISCUSSION

The MMH assumes that variations in marine fish year-class strength are rooted in the fixity of the fish spawning time in relation to variable zooplankton abundance, i.e. predator (larval fish) abundance depends on prey abundance. Thus, the MMH makes sense only if prey biomass controls predator biomass, a relationship controlled from the bottom-up. In predator-controlled, top-down trophic relationships, changes in prey biomass should not statistically affect the predator biomass. Hence, the MMH cannot be applied to a predator-controlled trophic relationship without considering the more general version of the hypothesis, that the abun-

dance of individual species depends on synchrony with adjacent trophic levels, including synchrony with prey increases (prey-controlled MMH) as well as synchrony with predator decreases (predator-controlled MMH).

In this study, we statistically tested whether the MMH can be applied in different marine systems characterized by bottom-up or top-down control, or both. In the Narragansett Bay estuary, where it is well documented that the abundance of *Acartia tonsa* is controlled by *Mnemiopsis leidyi* (Deason & Smayda 1982, Sullivan et al. 2007, Sullivan et al. 2008), we found that the predator-controlled MMH model (Table 1) explained changes in prey abundance. The significance of the predator-controlled model was expected, because *M. leidyi* is widely associated with top-down control of plankton dynamics in systems where it is native as well as invasive (Purcell et al. 2001, Costello et al. 2006a, Condon & Steinberg 2008, Kideys et al. 2008). In a sense, our results illustrate the control of population dynamics by predation with the addition of a time component to the analysis (Bollens et al. 1992). The prey-controlled model was also statistically significant, but presents 2 challenges. First, the relationship shows a U shape, which would be expected for a predator-controlled relationship; however, the U shape is due to only 2 data points associated with a very wide confidence interval, rendering the model unrealistic (Fig. 4a). Second, the model shows an increase in ctenophore abundance associated with an increase in the time separating the 2 abundance maxima (i.e. the peak of *M. leidyi* occurring earlier and earlier than the peak of *A. tonsa*). Such a pattern is expected for a predator-controlled relationship, i.e. *A. tonsa* preying on *M. leidyi*, which is not the case. This result may thus be an artefact of using the prey-controlled model in a case where a strong predator-controlled model applies.

In the Skagerrak system, the chl *a* bloom depended on the level of synchrony between peaks of abundance of chl *a* and *Calanus finmarchicus* (predator-controlled model) (Fig. 4d). This result suggests that *C. finmarchicus* limited the phytoplankton bloom in a typical top-down control relationship. In contrast, the abundance of *C. helgolandicus* was higher when its peak of abundance was synchronous with the chl *a* bloom (prey-controlled model) (Fig. 4e), indicating a bottom-up controlled relationship. Thus, the 2 copepod species appeared to have very different relationships to their prey during the spring bloom, which in turn may have a large effect on the entire ecosystem (Beaugrand et al. 2003, Johannessen et al. 2011)

For North Sea cod larvae and juveniles, which are well documented to be prey-controlled (Beaugrand et al. 2003, Durant et al. 2005, Olsen et al. 2011), we found that the prey-controlled model (Table 1, Fig. 4g) explained the change in abundance. The time difference between the peaks of abundance had a significant but minor effect, most likely because alternative prey may be available to cod over the entire annual cycle. The predator-controlled model was significant, but the effect of cod abundance on plankton was opposite to what was expected (i.e. a positive effect) (Fig. 4h). This positive effect of cod may be explained by the negative effect of cod predation on another copepod grazer, such as the herring *Clupea harengus*. However, the second best, and also significant, model selected by GCV (Table 1) indicated that the highest copepod abundances were associated with both high cod abundances and high time difference between the peaks of abundance. In other words, cod had a stronger positive effect on copepods when the copepod peak occurred late in the season. This result may thus be an artefact of using the predator-controlled model in a case where a strong prey-controlled model applies.

The results for Narragansett Bay and the North Sea systems illustrate the limitation of our analyses: when a strong relationship exists between predator and prey, both formulations (i.e. prey = f[predator] and predator = f[prey]) are significant when evaluated using the same data. Consequently, it is difficult to determine whether the predator or the prey controls the interaction without knowing the structure and function of the entire system. In the North Sea system, the discrepancy between the synchrony effect and abundance prompts us to select the prey-controlled model as most appropriate. In the case of Narragansett Bay system, we based our conclusions on the observation that *Mnemiopsis leidyi* can nearly extirpate *Acartia tonsa* from the bay when it colonizes the system during periods of increased temperatures (Costello et al. 2006a,b, Sullivan et al. 2007).

There is now evidence that climate change can lead to differential changes in the occurrence of predators and their prey in marine pelagic systems (Platt et al. 2003), with the potential to increase phenological mismatch (Cury et al. 2008). In some cases this may modify the structure of the system, e.g. by changing the dominant species. For example, *Acartia tonsa* was historically the dominant secondary producer in the Narragansett Bay system (e.g. Hulsizer 1976) because its period of highest production in July occurred prior to the seasonal appearance of *Mnemiopsis leidyi* in late summer (Durbin & Durbin

1981). Recent warmer spring temperatures have advanced the seasonal appearance of *M. leidyi* in the bay, but not that of *A. tonsa* (Costello et al. 2006a), leading to a temporal match and the copepod's near extirpation from the system.

Both our theoretical arguments and empirical analyses extend discussion of the match-mismatch hypothesis and of predator control of lower trophic levels by upper trophic levels. An advantage of our approach is that the match-mismatch models can be applied to evaluate the relative strength of predator or prey control in a predator-prey pair. However, doing so requires relatively long-term series data of good quality. The models also have the ability to separate within-season temporal shifts of trophic synchrony from an annual component linked to total predator/prey abundance. In our view, this improves our ability to predict the negative effects of predation in a changing environment.

*Acknowledgements.* The Norwegian Research Council supported this research through the MICO project. The Norwegian Pollution Control Authority funded the Skagerrak data collection (the Coastal Water Monitoring Program). The US National Science Foundation funded the Narragansett Bay study. We thank 2 anonymous referees for their comments on our manuscript.

#### LITERATURE CITED

- Beaugrand G, Brander KM, Lindley JA, Souissi S, Reid PR (2003) Plankton effect on cod recruitment in the North Sea. *Nature* 426:661–664
- Bollens SM, Frost BW, Schwaninger HR, Davis CS, Way KJ, Landsteiner MC (1992) Seasonal plankton cycles in a temperate fjord and comments on the match-mismatch hypothesis. *J Plankton Res* 14:1279–1305
- Brander KM (1994) The location and timing of cod spawning around the British isles. *ICES J Mar Sci* 51:71–89
- Condon RH, Steinberg DK (2008) Development, biological regulation, and fate of ctenophore blooms in the York River estuary, Chesapeake Bay. *Mar Ecol Prog Ser* 369: 153–168
- Costello JH, Sullivan BK, Gifford DJ (2006a) A physical-biological interaction underlying variable phenological responses to climate change by coastal zooplankton. *J Plankton Res* 28:1099–1105
- Costello JH, Sullivan BK, Gifford DJ, Van Keuren D, Sullivan LJ (2006b) Seasonal refugia, shoreward thermal amplification, and metapopulation dynamics of the ctenophore *Mnemiopsis leidyi* in Narragansett Bay, Rhode Island. *Limnol Oceanogr* 51:1819–1831
- Cury PM, Shin YJ, Planque B, Durant JM and others (2008) Ecosystem oceanography for global change in fisheries. *Trends Ecol Evol* 23:338–346
- Cushing DH (1969) The regularity of the spawning season of some fishes. *J Cons Int Explor Mer* 33:81–92
- Cushing DH (1990) Plankton production and year-class

- strength in fish populations: an update of the match/mismatch hypothesis. *Adv Mar Biol* 26:249–293
- Dahl E, Johannessen T (1998) Temporal and spatial variability of phytoplankton and chlorophyll *a*: lessons from the south coast of Norway and the Skagerrak. *ICES J Mar Sci* 55:680–687
- Deason EE, Smayda TJ (1982) Experimental evaluation of herbivory in the ctenophore *Mnemiopsis leidyi* relevant to ctenophore-zooplankton-phytoplankton interactions in Narragansett Bay, Rhode Island, USA. *J Plankton Res* 4:219–236
- Durant JM, Hjermmann DØ, Anker-Nilssen T, Beaugrand G, Mysterud A, Pettorelli N, Stenseth NC (2005) Timing and abundance as key mechanisms affecting trophic interactions in variable environments. *Ecol Lett* 8:952–958
- Durant JM, Hjermmann DØ, Ottersen G, Stenseth NC (2007) Climate and the match or mismatch between predator requirements and resource availability. *Clim Res* 33: 271–283
- Durbin AG, Durbin EG (1981) Standing stock and estimated production rates of phytoplankton and zooplankton in Narragansett Bay, Rhode Island. *Estuaries* 4:24–41
- Heath MR, Lough RG (2007) A synthesis of large-scale patterns in the planktonic prey of larval and juvenile cod (*Gadus morhua*). *Fish Oceanogr* 16:169–185
- Hulsizer EE (1976) Zooplankton of lower Narragansett Bay, 1972–1973. *Chesap Sci* 17:260–270
- Johannessen T, Dahl E, Falkenhaug T, Naustvoll LJ (2011) Concurrent recruitment failure in gadoids and changes in the plankton community along the Norwegian Skagerrak coast after 2002. *ICES J Mar Sci* 69:795–801
- Kideys AE, Roohi A, Eker-Develi E, Mélin F, Beare D (2008) Increased chlorophyll levels in the southern Caspian Sea following an invasion of jellyfish. *Res Lett Ecol* 2008: Article ID 185642
- Lassen H, Medley P (2001) Virtual population analysis—a practical manual for stock assessment. *FAO Fish Tech Pap* 400. FAO, Rome
- Laurel BJ, Hurst TP, Ciannelli L (2011) An experimental examination of temperature interactions in the match-mismatch hypothesis for Pacific cod larvae. *Can J Fish Aquat Sci* 68:51–61
- Olsen EM, Ottersen G, Llope M, Chan KS, Beaugrand G, Stenseth NC (2011) Spawning stock and recruitment in North Sea cod shaped by food and climate. *Proc R Soc Lond B Biol Sci* 278:504–510
- Platt T, Fuentes-Yaco C, Frank KT (2003) Spring algal bloom and larval fish survival. *Nature* 423:398–399
- Purcell JE, Shiganova TA, Decker MB, Houde ED (2001) The ctenophore *Mnemiopsis* in native and exotic habitats: U.S. estuaries versus the Black Sea basin. *Hydrobiologia* 451:145–176
- R Development Core Team (2010) R: A language and environment for statistical computing. R Foundation for Statistical Computing, Vienna, available at [www.R-project.org](http://www.R-project.org)
- Reid PC, Colebrook JM, Matthews JBL, Aiken J, Continuous Plankton Recorder Team (2003) The continuous plankton recorder: concepts and history, from plankton indicator to undulating recorders. *Prog Oceanogr* 58: 117–173
- Sinclair ARE, Krebs CJ (2002) Complex numerical responses to top-down and bottom-up processes in vertebrate populations. *Philos Trans R Soc B* 357:1221–1231
- Sullivan BK, Costello JH, Van Keuren D (2007) Seasonality of the copepods *Acartia hudsonica* and *Acartia tonsa* in Narragansett Bay, RI, USA during a period of climate change. *Estuar Coast Shelf Sci* 73:259–267
- Sullivan BK, Gifford DJ, Costello JH, Graff JR (2008) Narragansett Bay ctenophore-zooplankton-phytoplankton dynamics in a changing climate. In: Desbonnet A, Costa-Pierce B (eds) *Science for ecosystem-based management: Narragansett Bay in the 21st century*. Springer Series on Environmental Management, Springer, New York, NY, p 485–490
- Wood SN (2011) Fast stable restricted maximum likelihood and marginal likelihood estimation of semiparametric generalized linear models. *J R Stat Soc B* 73:3–36
- Wood SN, Augustin NH (2002) GAMs with integrated model selection using penalized regression splines and applications to environmental modelling. *Ecol Model* 157: 157–177

*Editorial responsibility: Kenneth Sherman,  
Narragansett, Rhode Island, USA*

*Submitted: April 16, 2012; Accepted: October 3, 2012  
Proofs received from author(s): January 18, 2013*