



**HAL**  
open science

# Sharp interface limit for two components Bose-Einstein condensates

Michael Goldman, Jimena Royo-Letelier

► **To cite this version:**

Michael Goldman, Jimena Royo-Letelier. Sharp interface limit for two components Bose-Einstein condensates. ESAIM: Control, Optimisation and Calculus of Variations, 2015. hal-00925813v5

**HAL Id: hal-00925813**

**<https://hal.science/hal-00925813v5>**

Submitted on 2 Sep 2014

**HAL** is a multi-disciplinary open access archive for the deposit and dissemination of scientific research documents, whether they are published or not. The documents may come from teaching and research institutions in France or abroad, or from public or private research centers.

L'archive ouverte pluridisciplinaire **HAL**, est destinée au dépôt et à la diffusion de documents scientifiques de niveau recherche, publiés ou non, émanant des établissements d'enseignement et de recherche français ou étrangers, des laboratoires publics ou privés.

# Sharp interface limit for two components Bose-Einstein condensates

M. Goldman \*

J. Royo-Letelier †

## Abstract

We study a double Cahn-Hilliard type functional related to the Gross-Pitaevskii energy of two-components Bose-Einstein condensates. In the case of large but same order intercomponent and intracomponent coupling strengths, we prove  $\Gamma$ -convergence to a perimeter minimisation functional with an inhomogeneous surface tension. We study the asymptotic behavior of the surface tension as the ratio between the intercomponent and intracomponent coupling strengths becomes very small or very large and obtain good agreement with the physical literature. We obtain as a consequence, symmetry breaking of the minimisers for the harmonic potential.

## 1 Introduction

For  $V$  a given trapping potential (see Hypothesis 3.1 below for more precise requirement) and a fixed constant  $\varepsilon > 0$  let  $\eta_\varepsilon$  be the (unique) positive minimiser of the Gross-Pitaevskii functional

$$E_\varepsilon(\eta) := \frac{1}{2} \int_{\mathbb{R}^n} |\nabla \eta|^2 + \frac{1}{\varepsilon^2} V |\eta|^2 + \frac{1}{2\varepsilon^2} |\eta|^4 dx, \quad (1.1)$$

under the constraint  $\|\eta\|_2 = 1$ , where  $\|\eta\|_2$  denotes the  $L^2(\mathbb{R}^n)$  norm of  $\eta$ . We then consider for  $\beta$ ,  $\alpha_1$  and  $\alpha_2$  positive constants, with  $\alpha_1 + \alpha_2 = 1$ , the double Cahn-Hilliard type functional

$$\mathcal{F}_{\varepsilon,\beta}(v, \varphi) := \frac{1}{2} \int_{\mathbb{R}^n} \eta_\varepsilon^2 |\nabla v|^2 + \frac{1}{2\varepsilon^2} \eta_\varepsilon^4 (1 - v^2)^2 + \frac{1}{4} \eta_\varepsilon^2 v^2 |\nabla \varphi|^2 + \frac{1}{4\varepsilon^2} \beta \eta_\varepsilon^4 v^4 \sin^2 \varphi dx, \quad (1.2)$$

under the mass constraints

$$\int_{\mathbb{R}^n} \eta_\varepsilon^2 v^2 dx = \alpha_1 + \alpha_2 = 1 \quad \text{and} \quad \int_{\mathbb{R}^n} \eta_\varepsilon^2 v^2 \cos \varphi dx = \alpha_1 - \alpha_2, \quad (1.3)$$

and study its behavior when the parameter  $\varepsilon$  tends to zero.

---

\*Max Planck Institute for Mathematics in the Sciences, Inselstrasse 22, 04103, Leipzig, Germany, email: goldman@mis.mpg.de, funded by a Von Humboldt PostDoc fellowship

†Institute of Science and Technology Austria (IST Austria), Am Campus 1, 3400 Klosterneuburg, Austria, email:jimena.royo-letelier@ist.ac.at

This functional arises in the description of two-components Bose-Einstein condensates with equal intracomponent coupling strengths (see Section 3). The parameter  $\frac{1}{\varepsilon^2}$  represents the intracomponent coupling strength whereas  $1 + \beta$  is the ratio between the intercomponent and intracomponent coupling strengths.

The Gross-Pitaevskii functional (1.1), which describes the energy of a single component condensate with density  $|\eta_\varepsilon|^2$ , has been extensively studied in the literature [1, 2, 17, 18]. As  $\varepsilon$  goes to zero,  $\eta_\varepsilon$  converges to the Thomas-Fermi profile  $\sqrt{\rho}$ , given by

$$\rho(x) := (\lambda^2 - V(x))_+ \quad (1.4)$$

with  $\lambda$  determined by the constraint  $\int_{\mathbb{R}^n} \rho dx = 1$ . The support of  $\rho$  is a domain denoted by  $\mathcal{D}$  and corresponds to the region where the density of the single component condensate does not vanish as  $\varepsilon \rightarrow 0$ .

The main result of the paper is the  $\Gamma$ -convergence [12, 11] of  $\varepsilon\mathcal{F}_{\varepsilon,\beta}$  to a perimeter minimisation problem with an inhomogeneous surface tension  $\sigma_\beta$ , defined in  $\mathcal{D}$  by  $\sigma_\beta(x) := \rho(x)^{3/2}\bar{\sigma}_\beta$  with

$$\bar{\sigma}_\beta := \inf \left\{ \frac{1}{2} \int_{-\infty}^{+\infty} v'^2 + \frac{1}{2} (1 - v^2)^2 + \frac{1}{4} v^2 \varphi'^2 + \frac{\beta}{4} v^4 \sin^2 \varphi dt : \lim_{t \rightarrow -\infty} \varphi = 0 \text{ and } \lim_{t \rightarrow +\infty} \varphi = \pi \right\}, \quad (1.5)$$

where in the infimum, the function  $v$  (respectively  $\varphi$ ) denotes a function from  $\mathbb{R}$  to  $[0, 1]$  (respectively from  $\mathbb{R}$  to  $[0, \pi]$ ).

**Theorem 1.1.** ( $\Gamma$ -convergence) *Let  $\beta > 0$  be fixed. Under the Hypothesis 3.1, the  $\Gamma$ -limit in  $L^1_{loc}(\mathcal{D}) \times L^1_{loc}(\mathcal{D})$  as  $\varepsilon \rightarrow 0$  of  $\varepsilon\mathcal{F}_{\varepsilon,\beta}$  with mass constraint (1.3) is given by the functional  $\mathcal{F}_\beta$  defined as*

$$\mathcal{F}_\beta(v, \varphi) := \begin{cases} \int_{\mathcal{D}} \frac{\sigma_\beta}{\pi} |D\varphi| & \text{if } v = 1 \text{ a.e. in } \mathcal{D} \text{ and } \varphi \in BV_{loc}(\mathcal{D}; \{0, \pi\}) \\ +\infty & \text{otherwise,} \end{cases} \quad (1.6)$$

with mass constraint

$$\int_{\mathbb{R}^n} \rho \cos \varphi dx = \alpha_1 - \alpha_2. \quad (1.7)$$

Since  $\mathcal{F}_\beta$  is finite only for  $v = 1$ , we will denote by  $\mathcal{F}_\beta(\varphi) := \mathcal{F}_\beta(1, \varphi)$ . It is worth noticing that since  $\mathcal{F}_\beta(\varphi) = \frac{\bar{\sigma}_\beta}{\pi} \int_{\mathcal{D}} \rho^{3/2} |D\varphi|$ , the minimizers of  $\mathcal{F}_\beta$  do not depend on  $\beta$ . This fact, which is quite peculiar to BEC interfaces, was already well known in the physics literature (see [32]). The functional  $\mathcal{F}_{\varepsilon,\beta}$  shares at the same time some features with the celebrated Ambrosio-Tortorelli functional which is approximating the Mumford-Shah functional (see [5, 4]), and some other with functionals appearing in the study of phase transitions such as the Modica-Mortola energy [26] (also known as Cahn-Hilliard or Allen-Cahn functional) or more general weighted functionals [10] (see also [11, 12]). Indeed,  $\mathcal{F}_{\varepsilon,\beta}$  consists of the sum of two singularly perturbed, weighted double-well potentials which are coupled

together. As in [5, 11, 3, 10] our proof is based on the slicing method described in Section 2.2.

In experiments realised with two-components Bose-Einstein condensates [25, 16, 29], the segregation of the components is observed for large values of the intercomponent coupling strengths. This has also been supported by numerical simulations in respectively, one ([20]), two ([19, 23]) and three ([28]) space dimensions. In our setting, at the level of  $\mathcal{F}_{\varepsilon,\beta}$  this means that for large values of  $\beta$ ,  $\varphi$  takes approximately only values 0 and  $\pi$  while  $v$  is almost everywhere close to one. Moreover, for the harmonic potential  $V = |x|^2$  in dimension  $n = 2$  [25, 23], one also observes a symmetry breaking in the sense that while  $V$  is radially symmetric, the support of each component (which correspond respectively to  $A := \{\varphi = \pi\}$  and  $\mathcal{D} \setminus A = \{\varphi = 0\}$ ) are not. The numerical simulations also show that near  $\partial A$ , the function  $v$  is close to a small positive constant. For  $\beta < 0$  the two components do not segregate and their densities are both proportional to  $\rho$ .

We mention that segregation of two-components condensates has been widely studied for bounded intracomponent coupling strengths and large intercomponent coupling strength. In [30] segregation and symmetry breaking is proven in  $\mathbb{R}^2$  for small intracomponent coupling strengths. In [33], working on a bounded domain of  $\mathbb{R}^2$  and taking the trapping potential  $V$  to be zero, the authors show segregation and local uniform convergence of the two components. In [15, 27] the regularity of  $\partial A$  is studied for the same model. The profile of the components near  $\partial A$  is analysed in [8, 9].

In [3] the functional  $\mathcal{F}_{\varepsilon,\beta}$  is studied for  $n = 2$  when  $\beta$  goes to  $+\infty$  as  $\varepsilon$  tends to zero. The authors also prove  $\Gamma$ -convergence to a perimeter minimisation problem with an inhomogeneous surface tension. The main difference with our setting is that for  $\beta \rightarrow +\infty$ , the limiting energy is given by the first two terms of  $\varepsilon\mathcal{F}_{\varepsilon,\beta}$  while the last two terms go to zero as  $\varepsilon \rightarrow 0$ . This leads to some decoupling of the energy which allows to compute explicitly the limiting surface tension. In our case, all the terms in the energy  $\varepsilon\mathcal{F}_{\varepsilon,\beta}$  are of the same order so that the surface tension is given by the one dimensional optimal transition problem (1.5). Thus, we need to precisely analyse the behavior of  $\bar{\sigma}_\beta$  and of the associated optimal profile. We prove existence and qualitative properties of minimisers of  $\sigma_\beta$ , an equipartition of the energy and compare our results with the physical literature [32, 7, 6, 31, 24]. In particular, we prove that minimisers  $(v, \varphi)$  of  $\bar{\sigma}_\beta$  satisfy  $\inf v = m(\beta) > 0$ , as was expected from numerical simulations. We remark that we are unable to prove uniqueness of the optimal profile. We study the asymptotic behavior of  $\bar{\sigma}_\beta$  when  $\beta$  tends to zero or infinity. On the one hand, we prove that when  $\beta \rightarrow +\infty$ , we recover the functional derived in [3]. We show that in this regime,  $\bar{\sigma}_\beta \simeq \beta^{-1/4}$  as predicted by formal asymptotic expansions [32]. This estimate follows from the fact that  $m(\beta) \sim \beta^{-1/4}$  (see Proposition 4.3). This fact is related to some open questions raised in [8] (see also the discussion in [3]). On the other hand, we show that as expected from [6, 31, 24, 7],  $\bar{\sigma}_\beta \simeq \sqrt{\beta}$  when  $\beta$  goes to zero. The fact that  $\bar{\sigma}_\beta$  vanishes in this limit, reflects the non segregation of the two components. Finally, in Proposition 6.6, we extend the symmetry breaking result for minimizers of  $\mathcal{F}_\infty$  (for the harmonic potential  $V = |x|^2$ ) obtained in [3] to space dimensions  $n = 1$  and  $n = 3$ . We notice that since the

minimizers of  $\mathcal{F}_\beta$  coincide with the minimizers of  $\mathcal{F}_\infty$ , this symmetry breaking result extends to any  $\beta > 0$  and by  $\Gamma$ -convergence to minimizers of the original functional  $\mathcal{F}_{\varepsilon,\beta}$  for  $\varepsilon$  small enough.

The paper is organised as follows: in Section 2 we recall the definition and main properties of functions of bounded variation and the slicing method. In Section 3, we explain how the functional  $\mathcal{F}_{\varepsilon,\beta}$  arises from the coupled Gross-Pitaevskii energy of a two-components Bose-Einstein condensate. In Section 4 we study the variational problem (1.6) and  $\beta > 0$ , and prove existence and qualitative properties of minimisers. In Section 5, we prove our main  $\Gamma$ -convergence theorem. Finally, in Section 6 we analyse the asymptotic behavior of  $\sigma_\beta$  when  $\beta$  tends to zero or infinity and prove as a consequence symmetry breaking of the minimisers.

## 2 Notation

For  $x \in \mathbb{R}^n$  and  $r > 0$ , we denote by  $B_r(x)$  the ball of radius  $r$  centered at  $x$  and simply write  $B_r$  when  $x = 0$ . We let  $\mathbb{S}^{n-1}$  be the unit sphere in  $\mathbb{R}^n$  and for  $k \in [0; n]$ , we denote by  $\mathcal{H}^k$  the  $k$ -dimensional Hausdorff measure. Given a set  $E \subset \mathbb{R}^n$ , we let  $\mathbf{1}_E$  be the characteristic function of the set  $E$ . The letters,  $c, C$  denote universal constants which can vary from line to line. We also make use of the usual  $o$  and  $O$  notation. For  $a$  and  $b$  real numbers we let  $a \wedge b := \min(a, b)$  and  $a \vee b := \max(a, b)$ . Throughout the paper, with a small abuse of language, we call sequence a family  $(u_\varepsilon)$  of functions labeled by a continuous parameter  $\varepsilon \in (0, 1]$ . A subsequence of  $(u_\varepsilon)$  is any sequence  $(u_{\varepsilon_k})$  such that  $\varepsilon_k \rightarrow 0$  as  $k \rightarrow +\infty$ . We mention that  $\rho$  will denote a positive constants in Sections 4 and 6, while in the rest of the paper it will be the function given in (1.4).

### 2.1 $BV(\Omega)$ functions

For  $\Omega$  an open set of  $\mathbb{R}^n$ , let  $BV(\Omega)$  be the space of functions  $u \in L^1(\Omega)$  having as distributional derivative  $Du$  a measure with finite total variation. For  $u \in BV(\Omega)$ , we denote by  $S_u$  the complement of the Lebesgue set of  $u$ . That is,  $x \notin S_u$  if and only if  $\lim_{r \rightarrow 0^+} \frac{1}{|B_r(x)|} \int_{B_r(x)} |u(y) - z| dy = 0$  for some  $z \in \mathbb{R}$ . We say that  $x$  is an approximate jump point of  $u$  if there exist  $\nu \in \mathbb{S}^{n-1}$  and distinct  $a, b \in \mathbb{R}$  such that

$$\lim_{r \rightarrow 0} \frac{1}{|B_r^+(x, \nu)|} \int_{B_r^+(x, \nu)} |u(y) - a| dy = 0 \quad \text{and} \quad \lim_{r \rightarrow 0} \frac{1}{|B_r^-(x, \nu)|} \int_{B_r^-(x, \nu)} |u(y) - b| dy = 0,$$

where  $B_r^\pm(x, \nu) := \{y \in B_r(x) : \pm \langle y - x, \nu \rangle > 0\}$ . Up to a permutation of  $a$  and  $b$  and a change of sign of  $\nu$ , this characterizes the triplet  $(a, b, \nu)$  which is then denoted by  $(u^+, u^-, \nu_u)$ . The set of approximated jump points is denoted by  $J_u$ . The following theorem holds [4].

**Theorem 2.1.** *The set  $S_u$  is countably  $\mathcal{H}^{n-1}$ -rectifiable and  $\mathcal{H}^{n-1}(S_u \setminus J_u) = 0$ . Moreover  $Du \llcorner J_u = (u^+ - u^-)\nu_u \mathcal{H}^{n-1} \llcorner J_u$ .*

We indicate by  $Du = \nabla u \, dx + D^s u$  the Radon-Nikodym decomposition of  $Du$ . Setting  $D^c u := D^s u \llcorner (\Omega \setminus S_u)$  we get the decomposition

$$Du = \nabla u \, dx + (u^+ - u^-) \nu_u \mathcal{H}^{n-1} \llcorner J_u + D^c u,$$

where  $\llcorner$  denotes the restriction. In particular, if  $u = \pi \mathbf{1}_E \in BV(\Omega, \{0, \pi\})$  then  $Du = \pi \nu^E \mathcal{H}^{n-1} \llcorner \partial^* E$  where  $\partial^* E$  is the reduced boundary of  $E$  defined by

$$\partial^* E := \left\{ x \in \text{Spt}(|D\mathbf{1}_E|) : \nu^E(x) := - \lim_{r \downarrow 0} \frac{D\mathbf{1}_E(B_r(x))}{|D\mathbf{1}_E|(B_r(x))} \text{ exists and } |\nu^E(x)| = 1 \right\}$$

and  $\nu^E$  is the outward measure theoretic normal to the set  $E$  which is countably  $\mathcal{H}^{n-1}$ -rectifiable. When  $n = 1$  we use the symbol  $u'$  in place of  $\nabla u$ , and  $u(x^\pm)$  to indicate the right and left limits at  $x$ .

## 2.2 Slicing method

In this section we recall the slicing method for functions with bounded variation [11, Ch. 4] which will be used in the proof of the lower  $\Gamma$ -limit. Consider an open set  $A \subset \mathbb{R}^n$  and let  $\nu \in \mathbb{S}^{n-1}$ . We call  $\Pi_\nu$  the hyperplane orthogonal to  $\nu$  and  $A_\nu$  the projection of  $A$  on  $\Pi_\nu$ . We define the one dimensional slices of  $A$ , indexed by  $x \in A_\nu$ , as

$$A_{\nu x} := \{t \in \mathbb{R}; x + t\nu \in A\}.$$

For every function  $f$  in  $\mathbb{R}^n$ , we note  $f_{\nu x}$  the restriction of  $f$  to the slice  $A_{\nu x}$ , defined by  $f_{\nu x}(t) := f(x + t\nu)$ . Functions in  $BV(\Omega)$  can be characterised by one-dimensional slices (see [11]).

**Theorem 2.2.** *Let  $u \in BV(A)$ . Then for all  $\nu \in \mathbb{S}^{n-1}$  we have*

$$u_{\nu x} \in BV(A_{\nu x}) \quad \text{for } \mathcal{H}^{n-1} - \text{a.e. } x \in A_\nu.$$

Moreover, for such points  $x$ , we have

$$u'_{\nu x}(t) = \langle \nabla u(x + t\nu), \nu \rangle \quad \text{for a.e. } t \in A_{\nu x}, \quad (2.1)$$

$$J_{u_{\nu x}} = \{t \in \mathbb{R} : x + t\nu \in J_u\}, \quad (2.2)$$

and

$$u_{\nu x}(t^\pm) = u^\pm(x + t\nu) \quad \text{or} \quad u_{\nu x}(t^\pm) = u^\mp(x + t\nu), \quad (2.3)$$

according to whether  $\langle \nu_u, \nu \rangle > 0$  or  $\langle \nu_u, \nu \rangle < 0$ . Finally, for every Borel function  $g : A \rightarrow \mathbb{R}$ ,

$$\int_{A_\nu} \sum_{t \in J_{u_{\nu x}}} g_{\nu x}(t) \, d\mathcal{H}^{n-1}(x) = \int_{J_u} g |\langle \nu_u, \nu \rangle| \, d\mathcal{H}^{n-1}. \quad (2.4)$$

Conversely if  $u \in L^1(A)$  and if for all  $\nu \in \{e_1, \dots, e_n\}$ , where  $(e_1, \dots, e_n)$  is a basis of  $\mathbb{R}^n$ , and almost every  $x \in A_\nu$  we have  $u_{\nu x} \in BV(A_{\nu x})$  and

$$\int_{A_\nu} |Du_{\nu x}|(A_{\nu x}) \, d\mathcal{H}^{n-1}(x) < +\infty,$$

then  $u \in BV(A)$ .

### 3 Derivation of the energy $\mathcal{F}_{\varepsilon,\beta}$ from the coupled Gross-Pitaevskii functional

A two-components condensate is described by two functions  $u_1$  and  $u_2$ , where  $|u_1|^2$  and  $|u_2|^2$  respectively represent the densities of the first and second component. The energy of the two-components condensate is given by a coupled Gross-Pitaevskii functional. When the intracomponent coupling strength of each component is equal to  $1/\varepsilon^2$ , and when the intercomponent coupling strength is equal to  $(1 + \beta)/\varepsilon^2$ , the functional is given by

$$\mathcal{E}_\varepsilon(u_1, u_2) := E_\varepsilon(u_1) + E_\varepsilon(u_2) + \frac{1 + \beta}{2\varepsilon^2} \int_{\mathbb{R}^n} |u_1|^2 |u_2|^2 dx,$$

where  $E_\varepsilon$  is defined in (1.1). Assuming that the mass of each component is preserved, the functional  $\mathcal{E}_\varepsilon$  is minimised under the restrictions

$$\int_{\mathbb{R}^n} |u_1|^2 dx = \alpha_1 \quad \text{and} \quad \int_{\mathbb{R}^n} |u_2|^2 dx = \alpha_2 \quad (3.1)$$

with  $\alpha_1, \alpha_2 > 0$  and  $\alpha_1 + \alpha_2 = \|\eta\|_2 = 1$ .

Standard arguments used in the study of a single component condensate yield that the minimisers of  $\mathcal{E}_\varepsilon$  under the constraint (3.1) are smooth positive functions, up to the multiplication by constant terms of modulus 1, with  $L^\infty$  norm uniformly bounded with respect to  $\varepsilon$  (see [1, 3, 17, 18]). Notice also that for a radial potential  $V$ , if  $(u_1, u_2)$  is a minimiser, then for any rotation  $R$  of the space,  $(u_1 \circ R, u_2 \circ R)$  is also a minimiser. In the single component case, the Euler-Lagrange equations imply uniqueness of the minimiser from which one can infer its radial symmetry. For two components condensates, this is not the case anymore.

The relation between  $\mathcal{E}_\varepsilon$  and  $\mathcal{F}_{\varepsilon,\beta}$  was established in [3]. Using the nonlinear sigma model representation [19, 23] and the Lassoued-Mironescu trick to decompose the energy of a rotating single condensate [21], the authors introduced the change of variables

$$v := \frac{\sqrt{|u_1|^2 + |u_2|^2}}{\eta_\varepsilon} \quad \text{and} \quad \frac{\varphi}{2} := \text{Arg} \left( \frac{|u_1| + i|u_2|}{\sqrt{|u_1|^2 + |u_2|^2}} \right) \quad (3.2)$$

for any pair  $(u_1, u_2)$  such that  $\mathcal{E}_\varepsilon(u_1, u_2) < \infty$  and  $|u_1|^2 + |u_2|^2 > 0$ . The equality

$$\mathcal{E}_\varepsilon(u_1, u_2) = \mathcal{F}_{\varepsilon,\beta}(v, \varphi) + E_\varepsilon(\eta_\varepsilon) \quad (3.3)$$

then holds, and the mass constraints in (3.1) rewrite as in (1.3). Let us point out that in [3], only the case  $n = 2$  is considered but the proof carries over verbatim to any space dimension. As seen from (3.3) and the expression (1.2) of  $\mathcal{F}_{\varepsilon,\beta}$ , there are two main advantages of the formulation of the problem in terms of the functions  $(v, \varphi)$ . On the one hand, it naturally identifies the leading order term  $E_\varepsilon(\eta_\varepsilon)$ . On the other hand, it clearly shows that the second order contribution  $\mathcal{F}_{\varepsilon,\beta}$  is a singular

perturbation type functional.

Notice that since the minimisers  $(u_1, u_2)$  are uniformly bounded and  $\eta_\varepsilon$  does not vanish, for every compact set  $K$  of  $\mathcal{D}$ , there exists a constant  $C(K)$  such that  $0 < v \leq C(K)$  in  $K$ . Moreover, it is readily seen from the definition that  $\varphi \in [0, \pi]$ . We are thus naturally led to minimize  $\mathcal{F}_{\varepsilon, \beta}$  in the class

$$Y(\mathcal{D}) := \{(v, \varphi) : \text{for every compact set } K \subset \mathcal{D}, 0 < v \leq C(K) \text{ in } K \text{ and } \varphi \in [0, \pi]\}$$

under the mass constraints (1.3). For a subset  $A$  of  $\mathcal{D}$ , we introduce the localised version of  $\mathcal{F}_{\varepsilon, \beta}$ :

$$\mathcal{F}_{\varepsilon, \beta}(v, \varphi; A) := \frac{1}{2} \int_A \eta_\varepsilon^2 |\nabla v|^2 + \frac{1}{2\varepsilon^2} \eta_\varepsilon^4 (1 - v^2)^2 + \frac{1}{4} \eta_\varepsilon^2 v^2 |\nabla \varphi|^2 + \frac{1}{4\varepsilon^2} \beta \eta_\varepsilon^4 v^4 \sin^2 \varphi \, dx,$$

and

$$Y(A) := \{(v, \varphi) : \text{for every compact set } K \subset \mathcal{D}, 0 < v \leq C(K) \text{ in } K \cap A \text{ and } \varphi \in [0, \pi]\}.$$

Notice that, for any  $(v, \varphi) \in Y(\mathcal{D})$ , defining

$$u_1 := \eta_\varepsilon v \cos(\varphi/2) \quad \text{and} \quad u_2 := \eta_\varepsilon v \sin(\varphi/2) \tag{3.4}$$

relation (3.3) holds and we have  $|u_1|^2 + |u_2|^2 > 0$ .

In the following we are going to make the following assumptions on  $V$ :

**Hypothesis 3.1.**  *$V$  is such that  $V(x) \rightarrow +\infty$  when  $|x| \rightarrow +\infty$  and there exist  $C, a, b, c > 0$  such that if  $\rho$  is the Thomas-Fermi profile defined in (1.4),*

$$\|\eta_\varepsilon\|_\infty < C \tag{3.5}$$

$$\|\eta_\varepsilon\|_{L^2(\mathbb{R}^n \setminus \mathcal{D})} \leq C \varepsilon^a \tag{3.6}$$

$$|\eta_\varepsilon(x) - \sqrt{\rho}(x)| \leq C \varepsilon^c \quad \text{if } \text{dist}(x, \partial\mathcal{D}) > C\varepsilon^b \tag{3.7}$$

We remark that for the harmonic potential  $V(x) = |x|^2$ , it was proven in [17] that these conditions hold true in dimension  $n = 2$ . Moreover, it can be checked that their proof carries over almost verbatim to any space dimension. Recently, Karali and Sourdis [18], obtained that if  $n = 2$ , Hypothesis 3.1 holds if  $V$  satisfies:

- (i)  $V$  is nonnegative and  $C^1$ ,
- (ii) there exist  $C > 1, p \geq 2$  such that  $\frac{1}{C}(1 + |x|^p) \leq V(x) \leq C(1 + |x|^p)$ ,
- (iii)  $\mathcal{D}$  is a simply connected bounded domain containing the origin with smooth boundary and such that  $\frac{\partial V}{\partial \nu} > 0$  on  $\partial\mathcal{D}$ .

Notice that in their paper, Karali and Sourdis prove that  $\|\eta_\varepsilon - \sqrt{\rho}\|_{L^\infty(\mathbb{R}^2)} \leq C\varepsilon^{1/3}$  [18, Rem. 4.4] which is stronger than (3.7). They also claim that their proof should extend to any space dimension (see [18, Rem. 3.12]) and that the fact that  $\mathcal{D}$  is simply connected is superfluous (see [18, Rem. 1.1]).



## 4 The surface tension at finite $\beta > 0$

In this section, for  $\beta > 0$  fixed, we study the following variational problem:

$$\bar{\sigma}_\beta := \inf \left\{ \mathcal{G}_\beta(v, \varphi) : v \geq 0, 0 \leq \varphi \leq \pi, \lim_{-\infty} \varphi = 0 \text{ and } \lim_{+\infty} \varphi = \pi \right\}, \quad (4.1)$$

where

$$\mathcal{G}_\beta(v, \varphi) := \frac{1}{2} \int_{-\infty}^{+\infty} v'^2 + W(v) + \frac{1}{4} v^2 \varphi'^2 + \frac{\beta}{4} v^4 \sin^2 \varphi \, dt, \quad (4.2)$$

with  $W(v) := \frac{1}{2} (1 - v^2)^2$ .

Let us point out that if  $\mathcal{G}_\beta(v, \varphi)$  is finite then  $\lim_{x \rightarrow \pm\infty} v(x) = 1$ .

We start by evaluating the energy necessary to connect  $v$  from a given value  $m > 0$  to 1.

**Lemma 4.1.** *Let  $m \in [0, 1]$  then*

$$\inf \left\{ \int_0^{+\infty} v'^2 + W(v) \, dt : v(0) = m \right\} = \sqrt{2} \left( \frac{2}{3} - m + \frac{m^3}{3} \right),$$

and the optimal profile is given by  $v_m := \tanh \left( \sqrt{\frac{1}{2}} t + c_m \right)$  where  $c_m := \tanh^{-1}(m)$ .

*Proof.* As in the usual Modica-Mortola problem,

$$\inf_{v(0)=m} \int_0^{+\infty} v'^2 + W(v) \, dt = \sqrt{2} \int_m^1 (1 - t^2) dt = \sqrt{2} \left( \frac{2}{3} - m + \frac{m^3}{3} \right).$$

□

We now prove that we can restrict ourselves to functions  $v$  which stay away from zero.

**Proposition 4.2.** *For every  $\beta > 0$ , there exists  $m^* = m^*(\beta) > 0$  such that*

$$\bar{\sigma}_\beta = \inf \left\{ \mathcal{G}_\beta(v, \varphi) : v \in [m^*, 1], \lim_{-\infty} \varphi = 0 \text{ and } \lim_{+\infty} \varphi = \pi \right\}.$$

*Proof.* First, let us notice that by truncation, we can reduce ourselves to minimise among functions  $v \in [0, 1]$ . Up to translation we can also assume that  $\inf_{\mathbb{R}} v = v(0)$ . Let  $m \geq 0$ , then for every function  $v$  such that  $\inf_{\mathbb{R}} v = v(0) = m$  and every admissible  $\varphi$ ,

$$\begin{aligned} \mathcal{G}_\beta(v, \varphi) &\geq \frac{1}{2} \left[ \inf_{v(0)=m} \int_{-\infty}^0 v'^2 + W(v) \, dt \right] + \frac{1}{2} \left[ \inf_{v(0)=m} \int_0^{+\infty} v'^2 + W(v) \, dt \right] \\ &\quad + \frac{1}{2} \int_{\mathbb{R}} \frac{1}{4} v^2 \varphi'^2 + \frac{\beta}{4} v^4 \sin^2 \varphi \, dt \\ &\geq \left[ \inf_{v(0)=m} \int_0^{+\infty} v'^2 + W(v) \, dt \right] + \frac{1}{4} \int_{\mathbb{R}} \beta^{1/2} v^3 |\sin \varphi| |\varphi'| \, dt \\ &\geq \sqrt{2} \left( \frac{2}{3} - m + \frac{m^3}{3} \right) + \frac{\beta^{1/2} m^3}{4} \int_{\mathbb{R}} |\sin \varphi| |\varphi'| \, dt \\ &= \sqrt{2} \left( \frac{2}{3} - m + \frac{m^3}{3} \right) + \frac{\beta^{1/2} m^3}{4} \int_0^\pi |\sin x| \, dx \\ &= \sqrt{2} \left( \frac{2}{3} - m + m^3 \left( \frac{1}{3} + \frac{\beta^{1/2}}{2\sqrt{2}} \right) \right). \end{aligned}$$

Now, for  $m \geq 0$  and  $T > 0$ , consider the test functions defined by

$$v_{m,T} := \begin{cases} v_m(-t-T) & t < -T \\ m & t \in [-T, T] \\ v_m(t-T) & t \geq T \end{cases} \quad \text{and} \quad \varphi_T := \begin{cases} 0 & t < -T \\ \frac{\pi}{2T}(t+T) & t \in [-T, T] \\ \pi & t \geq T, \end{cases}$$

then

$$\begin{aligned} \mathcal{G}_\beta(v_{m,T}, \varphi_T) &= \sqrt{2} \left( \frac{2}{3} - m + \frac{m^3}{3} \right) + \frac{T}{2}(1-m^2)^2 + \frac{m^2\pi^2}{16T} + \frac{1}{4}\beta m^4 \int_0^T \sin^2\left(\frac{\pi}{2T}(t+T)\right) dt \\ &= \sqrt{2} \left( \frac{2}{3} - m + \frac{m^3}{3} \right) + \frac{T}{2}(1-m^2)^2 + \frac{m^2\pi^2}{16T} + \frac{\beta}{8}m^4 T. \end{aligned} \quad (4.3)$$

Optimizing in  $T$  we find  $T_m := \frac{m\pi}{2\sqrt{2}((1-m^2)^2 + \frac{\beta}{4}m^4)^{1/2}}$  and

$$\mathcal{G}_\beta(v_{m,T_m}, \varphi_{T_m}) = \sqrt{2} \left( \frac{2}{3} - m + \frac{m^3}{3} \right) + \frac{\sqrt{2}}{4}m\pi \left( (1-m^2)^2 + \frac{\beta}{4}m^4 \right)^{1/2}. \quad (4.4)$$

Let now (see Figure 1)

$$\Psi(m) := \left( \frac{m^3}{3} - m \right) + \frac{1}{4}m\pi \left( (1-m^2)^2 + \frac{\beta}{4}m^4 \right)^{1/2}$$

so that  $\mathcal{G}_\beta(v_{m,T_m}, \varphi_{T_m}) = \sqrt{2}(\Psi(m) + \frac{2}{3})$  and let

$$\bar{m} := \operatorname{argmin}_{m \in [0,1]} \Psi(m).$$

Let us first notice that since  $\Psi(0) = 0$  and  $\Psi'(0) = \frac{\pi}{4} - 1 < 0$ , the minimum of  $\Psi$  is negative for every  $\beta > 0$ . The function  $\frac{m^3}{3} - m$  is decreasing in  $[0, 1]$  and  $\Psi(\bar{m}) > -\frac{2}{3}$  hence there exists a unique  $m^*(\beta) \in (0, 1)$  such that  $\frac{m^*(\beta)^3}{3} - m^*(\beta) = \Psi(\bar{m})$ . We claim that

$$\bar{\sigma}_\beta = \inf \left\{ \mathcal{G}_\beta(v, \varphi) : \inf v \geq m^*(\beta), \lim_{-\infty} \varphi = 0 \text{ and } \lim_{+\infty} \varphi = \pi \right\}.$$

Indeed, if  $v$  is such that  $\inf v \leq m^*(\beta)$  and if  $\varphi$  is any admissible function, then letting  $m := \inf v$ , there holds

$$\begin{aligned} \mathcal{G}_\beta(v_{\bar{m}, T_{\bar{m}}}, \varphi_{T_{\bar{m}}}) &= \sqrt{2} \left( \Psi(\bar{m}) + \frac{2}{3} \right) < \sqrt{2} \left( \frac{m^3}{3} - m + \frac{2}{3} \right) \\ &\leq \sqrt{2} \left( \frac{2}{3} - m + m^3 \left( \frac{1}{3} + \frac{\beta^{1/2}}{2\sqrt{2}} \right) \right) \leq \mathcal{G}_\beta(v, \varphi) \end{aligned}$$

so that we can construct a competitor with smaller energy than  $(v, \varphi)$ .  $\square$

In the regime  $\beta \rightarrow +\infty$ , we can prove a more precise bound on  $\inf v$ . Notice that in the case  $\beta = +\infty$ , [3] proved that  $\inf v = 0$ .

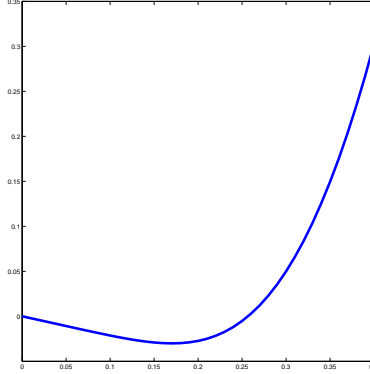


Figure 1: The function  $\Psi$

**Proposition 4.3.** *There exist constants  $B, C > 0$  such that if  $\beta \geq B$ ,*

$$\bar{\sigma}_\beta = \inf \left\{ \mathcal{G}_\beta(v, \varphi) : \frac{1}{C}\beta^{-1/4} \leq \inf v \leq C\beta^{-1/4}, \lim_{-\infty} \varphi = 0 \text{ and } \lim_{+\infty} \varphi = \pi \right\}.$$

*Proof.* Let  $\mathcal{M} := \{m \in [0, 1] : m^3 \left( \frac{1}{3} + \frac{\beta^{1/2}}{2\sqrt{2}} \right) - m > \Psi(\bar{m})\}$  then arguing as in the previous proof, we obtain

$$\bar{\sigma}_\beta = \inf \left\{ \mathcal{G}_\beta(v, \varphi) : \inf v \notin \mathcal{M}, \lim_{-\infty} \varphi = 0 \text{ and } \lim_{+\infty} \varphi = \pi \right\}.$$

The claim is thus proven provided we can show that for  $\beta$  large enough, and for  $m \in [0, 1]$  such that  $m \leq \frac{1}{C}\beta^{-1/4}$  or  $m \geq C\beta^{-1/4}$  then  $m \in \mathcal{M}$ . We notice first that if  $\beta$  is large then if  $m \geq C\beta^{-1/4}$ ,  $m^3 \left( \frac{1}{3} + \frac{\beta^{1/2}}{2\sqrt{2}} \right) - m > 0 > \Psi(\bar{m})$  hence  $m \in \mathcal{M}$ . Taking  $m = \tilde{m}\beta^{-1/4}$  with  $0 < \tilde{m} < \left( 4 \left[ \frac{16 - \pi^2}{\pi^2} \right] \right)^{1/4}$  so that  $\frac{1}{4}\pi \left( (1 - m^2)^2 + \frac{\beta}{4}m^4 \right)^{1/2} < 1$ , we obtain  $\Psi(\bar{m}) \leq -\frac{1}{C}\beta^{-1/4}$  and therefore, for  $m \leq \frac{1}{C}\beta^{-1/4}$ , we have  $m^3 \left( \frac{1}{3} + \frac{\beta^{1/2}}{2\sqrt{2}} \right) - m > \Psi(\bar{m})$ , that is  $m \in \mathcal{M}$ .  $\square$

We can now prove the existence of an optimal profile.

**Proposition 4.4.** *For every  $\beta > 0$  there exists a minimiser of  $\bar{\sigma}_\beta$ . Moreover, it is smooth and satisfies the Euler-Lagrange equations*

$$-v'' - (1 - v^2)v + \frac{1}{4}v\varphi'^2 + \frac{\beta}{2}v^3 \sin^2 \varphi = 0 \quad (4.5)$$

$$-(v^2\varphi')' + \beta v^4 \sin \varphi \cos \varphi = 0. \quad (4.6)$$

*Proof.* Let  $(v_n, \varphi_n)$  be a minimising sequence. Up to translation, we can assume that  $\varphi(0) = \frac{\pi}{2}$ . Let us notice that up to truncating  $v_n$ , we can also assume that  $v_n \in [0, 1]$ . Therefore, since  $v'_n$  is uniformly bounded in  $L^2(\mathbb{R})$ , up to extraction, the sequence  $v_n$  converges locally uniformly to some continuous function  $v$ . Moreover, by lower semicontinuity,

$$\int_{\mathbb{R}} v'^2 + W(v)dt \leq \liminf_{n \rightarrow +\infty} \int_{\mathbb{R}} v_n'^2 + W(v_n)dt.$$

Since

$$\int_{\mathbb{R}} (1-v)^2 dt \leq \int_{\mathbb{R}} (1-v^2)^2 dt \leq C \quad \text{and} \quad \int_{\mathbb{R}} (1-v)^{r^2} \leq C,$$

the function  $(1-v)$  is in  $H^1(\mathbb{R})$  and therefore  $\lim_{\pm\infty} (1-v) = 0$ , i.e.  $\lim_{\pm\infty} v = 1$ . Thanks to Proposition 4.2,  $\inf v_n \geq m^*$  from which we obtain that  $\varphi'_n$  is bounded in  $L^2(\mathbb{R})$  and thus  $\varphi_n$  also converges locally uniformly to some continuous function  $\varphi$  with  $\varphi(0) = \frac{\pi}{2}$ . By lower semicontinuity, there holds

$$\int_{\mathbb{R}} \frac{1}{4} v^2 \varphi'^2 + \frac{\beta}{4} v^4 \sin^2 \varphi dt \leq \liminf_{n \rightarrow +\infty} \int_{\mathbb{R}} \frac{1}{4} v_n^2 \varphi_n'^2 + \frac{\beta}{4} v_n^4 \sin^2 \varphi_n dt.$$

Since  $\sin^2 \varphi \in H^1(\mathbb{R})$ , the function  $\sin^2 \varphi$  converges to 0 both at plus and minus infinity so that  $\varphi$  has a limit at infinity which is either 0 or  $\pi$ . Moreover, since  $\varphi(0) = \frac{\pi}{2}$  we see that  $\varphi$  cannot be constantly equal to 0 or  $\pi$  on  $\mathbb{R}$ . If  $\lim_{x \rightarrow -\infty} v(x) = \lim_{x \rightarrow +\infty} v(x)$  then assuming that

$$\int_{-\infty}^0 v'^2 + W(v) + \frac{1}{4} v^2 \varphi'^2 + \frac{\beta}{4} v^4 \sin^2 \varphi dt \leq \int_0^{+\infty} v'^2 + W(v) + \frac{1}{4} v^2 \varphi'^2 + \frac{\beta}{4} v^4 \sin^2 \varphi dt$$

and setting

$$\tilde{v}(x) := \begin{cases} v(x) & x < 0 \\ v(-x) & x \geq 0 \end{cases} \quad \text{and} \quad \tilde{\varphi}(x) := \begin{cases} \varphi(x) & x < 0 \\ \pi - \varphi(-x) & x \geq 0, \end{cases}$$

we see that  $\mathcal{G}_\beta(\tilde{v}, \tilde{\varphi}) \leq \mathcal{G}_\beta(v, \varphi)$  and up to symmetrising again,  $\lim_{x \rightarrow -\infty} \tilde{\varphi} = 0$  and  $\lim_{x \rightarrow +\infty} \tilde{\varphi} = \pi$  so that  $(\tilde{v}, \tilde{\varphi})$  is a minimiser of  $\mathcal{G}_\beta$ .

From the integrated form of the Euler-Lagrange equations we see that  $(v^2 \varphi')$  is in  $H_{\text{loc}}^1(\mathbb{R})$  with derivative equal to  $\beta v^4 \sin \varphi \cos \varphi$  which is continuous. Hence,  $v^2 \varphi' \in C^1$  which implies (by continuity of  $v$ ) that  $\varphi' \in C^0$  and thus  $\varphi \in C^1$ . From this, we can use the first equation to infer higher regularity of  $v$  and then a simple bootstrapping argument gives the smoothness of  $(v, \varphi)$ .  $\square$

**Remark 4.5.** Arguing as in [5], we could have obtained the existence of an optimal profile even without using the fact that  $\inf v > 0$ .

We can now study some qualitative properties of the minimisers of  $\mathcal{G}_\beta$  at fixed  $\beta > 0$ .

**Proposition 4.6.** *For every minimising pair  $(v, \varphi)$  of  $\mathcal{G}_\beta$ , the function  $\varphi$  is increasing. Moreover there exists a minimising pair  $(v, \varphi)$  such that  $\varphi(-t) = \pi - \varphi(t)$  and  $v(-t) = v(t)$ ,  $v$  is increasing on  $\mathbb{R}^+$ ,  $\varphi$  is convex on  $\mathbb{R}^-$  and concave on  $\mathbb{R}^+$ . For every minimising function  $v$ , the minimiser of*

$$\min \left\{ \int_{\mathbb{R}} \frac{1}{4} v^2 \varphi'^2 + \frac{\beta}{4} v^4 \sin^2 \varphi dt : \lim_{-\infty} \varphi = 0 \text{ and } \lim_{+\infty} \varphi = \pi \right\} \quad (4.7)$$

*is unique and vice-versa, for every admissible  $\varphi$ , the minimiser of*

$$\min \left\{ \int_{\mathbb{R}} v'^2 + W(v) + \frac{1}{4} v^2 \varphi'^2 + \frac{\beta}{4} v^4 \sin^2 \varphi dt \right\} \quad (4.8)$$

is unique. Finally, for every minimising pair  $(v, \varphi)$ , there is equipartition of the energy in the sense that

$$v'^2 + \frac{1}{4}v^2\varphi'^2 = W(v) + \frac{1}{4}\beta v^4 \sin^2 \varphi. \quad (4.9)$$

*Proof.* Let  $(v, \varphi)$  be a minimising pair of  $\mathcal{G}_\beta$  and let us prove that  $\varphi$  is increasing. Let  $t^-$  be the first point such that  $\varphi(t) = \frac{\pi}{2}$  and similarly, let  $t^+$  be the last point such that  $\varphi(x) = \frac{\pi}{2}$ . If  $t^- \neq t^+$  then assuming that

$$\int_{-\infty}^{t^-} v'^2 + W(v) + \frac{1}{4}v^2\varphi'^2 + \frac{\beta}{4}v^4 \sin^2 \varphi dt \geq \int_{t^+}^{+\infty} v'^2 + W(v) + \frac{1}{4}v^2\varphi'^2 + \frac{\beta}{4}v^4 \sin^2 \varphi dt,$$

letting

$$\tilde{v}(t) := \begin{cases} v(t+t^+) & t \geq 0 \\ v(t^+ - t) & t \leq 0 \end{cases} \quad \text{and} \quad \tilde{\varphi}(t) := \begin{cases} \varphi(t+t^+) & t \geq 0 \\ \pi - \varphi(t^+ - t) & t \leq 0, \end{cases}$$

there holds  $\mathcal{G}_\beta(\tilde{v}, \tilde{\varphi}) < \mathcal{G}_\beta(v, \varphi)$  which gives a contradiction. From this, we see that  $\varphi$  can take the value  $\frac{\pi}{2}$  in only one point which up to translation can be assumed to be 0. From this, it follows that  $\varphi > \frac{\pi}{2}$  in  $\mathbb{R}^+$  hence from (4.6), we see that  $v^2\varphi'$  is decreasing in  $\mathbb{R}^+$ . Since  $\lim_{x \rightarrow +\infty} \varphi(x) = \pi$  and  $\varphi(x) \leq \pi$ , there must be arbitrarily large  $x$  such that  $\varphi'(x) \geq 0$  from which we infer that  $\varphi'$  is non-negative in  $\mathbb{R}^+$ . Similarly we can prove that  $\varphi'$  is also non-negative in  $\mathbb{R}^-$ . Let us notice that the symmetrisation made above, constructed a minimising pair  $(\tilde{v}, \tilde{\varphi})$  which satisfies  $\tilde{\varphi}(-t) = \pi - \tilde{\varphi}(t)$  and  $\tilde{v}(-t) = \tilde{v}(t)$ . From now on, let us drop the tildes for the sake of clarity and assume that  $(v, \varphi)$  is a symmetric minimising pair.

Let us now prove that we can further modify  $v$ , respectively  $\varphi$ , on  $\mathbb{R}^+$  and get an increasing, respectively a concave, function on  $\mathbb{R}^+$  while decreasing the energy. For this, we use standard rearrangement techniques (see [22]). For a function  $f$  vanishing at infinity, let us denote by  $f^*$  its decreasing rearrangement (see [22]). Analogously, for a function  $g$  with limit  $\alpha$  at infinity let us denote by  $g_*$  its increasing rearrangement i.e.  $f_* := \alpha - (\alpha - f)^*$ . From [22, Th. 3.4], we see that for two nonnegative functions  $f$  and  $g$  such that  $f$  vanishes at infinity and  $g$  has a limit at infinity, there holds

$$\int_{\mathbb{R}^+} f^* g_* dt \leq \int_{\mathbb{R}^+} f g dt.$$

Consider now  $v_*$  the increasing rearrangement of  $v$  then  $W(v_*) = W(v)^*$ ,  $(v^2)_* = (v_*)^2$ ,  $(v^4)_* = (v_*)^4$  and  $\int_{\mathbb{R}^+} v_*'^2 dt \leq \int_{\mathbb{R}^+} v'^2 dt$ . Let finally  $\tilde{\varphi} := \frac{\pi}{2} + \int_0^x (\varphi')^*(t) dt$  be the primitive of the decreasing rearrangement of  $\varphi'$ . Notice that  $\tilde{\varphi}$  is increasing and concave and for  $x \in \mathbb{R}^+$ , there holds

$$\begin{aligned} \tilde{\varphi}(x) &= \frac{\pi}{2} + \int_0^x (\varphi')^*(t) dt = \frac{\pi}{2} + \int_{\mathbb{R}^+} (\varphi')^*(t) \mathbf{1}_{[0,x]}(t) dt \\ &= \frac{\pi}{2} + \int_{\mathbb{R}^+} (\varphi')^*(t) \mathbf{1}_{[0,x]}^*(t) dt \geq \frac{\pi}{2} + \int_{\mathbb{R}^+} \varphi'(t) \mathbf{1}_{[0,x]}(t) dt \\ &\geq \varphi(x), \end{aligned}$$

from which  $\sin^2(\tilde{\varphi}(x)) \leq \sin^2(\varphi(x))$  and by symmetry the same inequality holds in  $\mathbb{R}^-$ . From this, we infer that  $\int_{\mathbb{R}} (v_*)^4 \sin^2(\tilde{\varphi}) dt \leq \int_{\mathbb{R}} v^4 \sin^2 \varphi dt$  and  $\int_{\mathbb{R}} (v_*)^2 (\tilde{\varphi}')^2 dt \leq \int_{\mathbb{R}} v^2 (\varphi')^2 dt$ . Putting all this

together, we find that

$$\mathcal{G}_\beta(v_*, \tilde{\varphi}) \leq \mathcal{G}_\beta(v, \varphi).$$

Let  $v$  be a fixed minimising function and let us prove that the minimiser of (4.7) is unique. For this we use an observation of [13] (see also [14]) and let  $\psi := \sin \varphi$ . The functional takes then the form

$$\int_{\mathbb{R}} \frac{1}{4} v^2 \frac{\psi'^2}{1 - \psi^2} + \frac{\beta}{4} v^4 \psi^2 dt$$

which is a strictly convex functional in  $\psi$ . From this we deduce that  $\sin \varphi$  is unique and since  $(v, \varphi)$  is minimising  $\mathcal{G}_\beta$ , the function  $\varphi$  is increasing from which we infer that  $\varphi$  is also unique.

Similarly, if  $\varphi$  is any admissible function, then using the celebrated Brenier trick in optimal transportation, we let  $w := v^2$  and notice that the functional can now be written as

$$\int_{\mathbb{R}} \frac{w'^2}{w} + \frac{1}{2}(1 - w)^2 + \frac{1}{4} w \varphi'^2 + \frac{\beta}{4} w^2 \sin^2 \varphi dt$$

which is strictly convex in  $w$ . Hence,  $w$  is unique from which it follows that  $v$  is also unique.

Finally, the equipartition of the energy (4.9) follows simply by differentiating for instance the right handside and then using (4.5) and (4.6).  $\square$

**Remark 4.7.** If  $v$  is any admissible function we cannot in general infer that a minimising  $\varphi$  of (4.7) is increasing. In this case, we can however still conclude that  $\sin \varphi$  is unique.

**Remark 4.8.** The uniqueness of the minimising pairs  $(v, \varphi)$  seems to be a difficult question. Let us notice that the functional

$$\int_{\mathbb{R}} \frac{w'^2}{w} + \frac{1}{2}(1 - w)^2 + \frac{1}{4} w \frac{\psi'^2}{1 - \psi^2} + \frac{\beta}{4} w^2 \psi^2 dt$$

is not convex in  $(w, \psi)$ . Moreover, due to the non monotonicity of  $v$ , the sliding technique (see [9]) seems to be difficult to use here. We also mention that using the change of variables in (3.4) with  $\eta_\varepsilon$  replaced by  $\sqrt{\rho}$ , the uniqueness of the minimising pair  $(v, \varphi)$  would be equivalent to the uniqueness of minimising pairs of

$$\frac{1}{2} \int_{\mathbb{R}} u_1'^2 + u_2'^2 + \frac{1}{2}(u_1^2 + u_2^2 - \rho)^2 + \beta u_1^2 u_2^2$$

with constraints

$$\lim_{+\infty} u_1 = \lim_{-\infty} u_2 = \rho \quad \text{and} \quad \lim_{-\infty} u_1 = \lim_{+\infty} u_2 = 0.$$

## 5 $\Gamma$ -convergence of $\mathcal{F}_{\varepsilon, \beta}$ for $\beta > 0$

In this section we study the  $\Gamma$ -convergence of the functionals  $\varepsilon \mathcal{F}_{\varepsilon, \beta}$  as  $\varepsilon \rightarrow 0$  and prove Theorem 1.1.

## 5.1 Lower bound and compactness

We start by proving the compactness of sequences with bounded energy.

**Proposition 5.1. (Compactness)** *Let  $(v_\varepsilon, \varphi_\varepsilon) \in Y(\mathcal{D})$  be a sequence of functions such that*

$$\sup_{\varepsilon > 0} \varepsilon \mathcal{F}_{\varepsilon, \beta}(v_\varepsilon, \varphi_\varepsilon) < \infty. \quad (5.1)$$

Then, as  $\varepsilon \rightarrow 0$ ,

$$(v_\varepsilon, \varphi_\varepsilon) \rightarrow (v, \varphi) \quad \text{in } L^1_{loc}(\mathcal{D}) \times L^1_{loc}(\mathcal{D}),$$

where  $v = 1$  a.e. in  $\mathcal{D}$  and  $\varphi \in BV_{loc}(\mathcal{D}; \{0, \pi\})$ . Moreover, if  $(v_\varepsilon, \varphi_\varepsilon)$  satisfy the mass constraint (1.3), then  $\varphi$  satisfies (1.7).

*Proof.* Let  $K$  be an open set relatively compact in  $\mathcal{D}$ . From (3.7), there is  $c = c(K) > 0$  such that for  $\varepsilon$  small enough  $\eta_\varepsilon > c > 0$  in  $K$ , so

$$\int_K |1 - v_\varepsilon|^2 + \beta v_\varepsilon^4 \sin^2 \varphi_\varepsilon \leq \frac{8}{c^4} \varepsilon^2 \mathcal{F}_{\varepsilon, \beta}(v_\varepsilon, \varphi_\varepsilon) = o_{\varepsilon \rightarrow 0}(1).$$

Hence,  $v_\varepsilon \rightarrow 1$  in  $L^2(K)$  and  $\sin^2(\varphi_\varepsilon) \rightarrow 0$  a.e. in  $K$ . We also observe that

$$\varepsilon \mathcal{F}_{\varepsilon, \beta}(v_\varepsilon, \varphi_\varepsilon) \geq \frac{c^3}{4} \int_K |\nabla v_\varepsilon| |1 - v_\varepsilon^2| + v_\varepsilon^3 |\nabla \varphi_\varepsilon| \sin \varphi_\varepsilon \geq c'(K) \int_K |\nabla \psi(v_\varepsilon, \varphi_\varepsilon)|,$$

where  $\psi(s, t) := g(t)v^3(4/3 - v)$  with  $g(t) := \int_0^t \sin z \, dz = 1 - \cos t$ . The functions  $\psi(v_\varepsilon, \varphi_\varepsilon)$  are uniformly bounded in  $BV(K)$ , so  $\psi(v_\varepsilon, \varphi_\varepsilon) \rightarrow \psi_0$  in  $L^1(K)$ . We derive that  $g(\varphi_\varepsilon) \rightarrow 3\psi_0$ , which implies that  $\varphi_\varepsilon \rightarrow \varphi = g^{-1}(3\psi_0) \in L^1(K; \{0, \pi\})$ , since  $g$  is monotone and  $\sin^2(\varphi_\varepsilon) \rightarrow 0$ . Then, since  $\psi_0 \in BV(K; \{0, 2/3\})$ , we obtain that  $\varphi \in BV(K; \{0, \pi\})$ .

Finally, if  $(v_\varepsilon, \varphi_\varepsilon)$  satisfy (1.3), then since  $\int_{\mathcal{D}} \rho \, dx = 1$ , there is  $r_K > 0$  going to zero as  $\text{dist}(K, \partial \mathcal{D}) \rightarrow 0$ , such that  $\int_{\mathcal{D} \setminus K} \rho \, dx = r_K$ . Also, from (3.7) we have  $\int_K \eta_\varepsilon^2 v_\varepsilon^2 \, dx - \int_K \rho \, dx = r_{\varepsilon, K} = o_{\varepsilon \rightarrow 0}(1)$ . Combining these and  $\int_{\mathbb{R}^n} \eta_\varepsilon^2 v_\varepsilon^2 \, dx = 1$ , we obtain  $\left| \int_{\mathbb{R}^n \setminus K} \eta_\varepsilon^2 v_\varepsilon^2 \cos \varphi_\varepsilon \, dx \right| \leq \int_{\mathbb{R}^n \setminus K} \eta_\varepsilon^2 v_\varepsilon^2 \, dx = r_K + r_{\varepsilon, K}$ , which yields

$$\left| \int_K \rho \cos \varphi \, dx - (\alpha_1 - \alpha_2) \right| = \lim_{\varepsilon \rightarrow 0} \left| \int_K \eta_\varepsilon^2 v_\varepsilon^2 \cos \varphi_\varepsilon \, dx - (\alpha_1 - \alpha_2) \right| = \lim_{\varepsilon \rightarrow 0} \left| \int_{\mathbb{R}^n \setminus K} \eta_\varepsilon^2 v_\varepsilon^2 \cos \varphi_\varepsilon \, dx \right| \leq r_K$$

and finishes the proof.  $\square$

In order to apply the slicing method we need to define the one dimensional restriction of the energy. For this we recall that for  $A$  an open set of  $\mathcal{D}$ ,  $x \in A$  and  $\nu \in \mathbb{S}^{n-1}$ , we set  $A_{\nu x} := \{t \in \mathbb{R}; x + t\nu \in A\}$ . For  $(v, \varphi) \in Y(A_{\nu x})$ , we define the one dimensional energy

$$\mathcal{F}_{\varepsilon, \beta}(v, \varphi; A_{\nu x}) := \frac{1}{2} \int_{A_{\nu x}} \eta_{\nu x, \varepsilon}^2 v'^2 + \frac{1}{2\varepsilon^2} \eta_{\nu x, \varepsilon}^4 (1 - v^2)^2 + \frac{1}{4} \eta_{\nu x, \varepsilon}^2 v^2 \varphi'^2 + \frac{1}{4\varepsilon^2} \beta \eta_{\nu x, \varepsilon}^4 v^4 \sin^2 \varphi \, dt.$$

We also define the limiting one dimensional energy as

$$\mathcal{F}_\beta(\varphi; A_{\nu x}) := \int_{A_{\nu x}} \frac{\sigma_{\nu x, \beta}}{\pi} |\varphi'|.$$

**Proposition 5.2.** (*1d*  $\Gamma$  - lim inf) *Let  $x \in \mathcal{D}$ ,  $\nu \in \mathbb{S}^{n-1}$  and  $\varphi \in BV_{loc}(\mathcal{D}_{\nu x}; \{0, \pi\})$ . For any sequence  $(v_\varepsilon, \varphi_\varepsilon) : \mathbb{R}_{\nu x} \rightarrow (0, 1] \times (0, \pi)$  converging as  $\varepsilon \rightarrow 0$  to  $(1, \varphi)$  in  $L^1_{loc}(\mathcal{D}_{\nu x}) \times L^1_{loc}(\mathcal{D}_{\nu x})$ ,*

$$\liminf_{\varepsilon \rightarrow 0} \varepsilon \mathcal{F}_{\varepsilon, \beta}(v_\varepsilon, \varphi_\varepsilon; \mathcal{D}_{\nu x}) \geq \mathcal{F}_\beta(\varphi; \mathcal{D}_{\nu x}). \quad (5.2)$$

*Proof.* Let  $B$  be any open, relatively compact subset of  $\mathcal{D}_{\nu x}$ . Let  $t_0 \in B \cap J_\varphi$  and  $\delta_0 > 0$  be such that  $(t_0 - \delta, t_0 + \delta)$  is contained in  $B$ . We can choose  $t^\pm \in (t_0 - \delta, t_0 + \delta)$  such that

$$t^- < t_0 < t^+, \quad \varphi(t^+) \neq \varphi(t^-), \quad \varphi_\varepsilon(t^\pm) \rightarrow \varphi(t^\pm) \in \{0, \pi\} \quad \text{and} \quad v_\varepsilon(t^\pm) \rightarrow 1$$

as  $\varepsilon \rightarrow 0$ . Estimate (3.7) and  $\overline{B} \subset \mathcal{D}_{\nu x}$  yield

$$\begin{aligned} \varepsilon \mathcal{F}_{\varepsilon, \beta}(v_\varepsilon, \varphi_\varepsilon; (t^+, t^-)) &= \frac{1}{2} \int_{t^-}^{t^+} \varepsilon \eta_{\nu x, \varepsilon}^2 v_\varepsilon'^2 + \frac{1}{2\varepsilon} \eta_{\nu x, \varepsilon}^4 (1 - v_\varepsilon^2)^2 + \frac{1}{4} \varepsilon \eta_{\nu x, \varepsilon}^2 v_\varepsilon^2 \varphi_\varepsilon'^2 + \frac{1}{4\varepsilon} \beta \eta_{\nu x, \varepsilon}^4 v_\varepsilon^4 \sin^2 \varphi_\varepsilon dt \\ &\geq \rho_{\nu x}(t_0) \frac{1}{2} \int_{t^-}^{t^+} \varepsilon v_\varepsilon'^2 + \frac{1}{2\varepsilon} \rho_{\nu x}(t_0) (1 - v_\varepsilon^2)^2 + \frac{1}{4} \varepsilon v_\varepsilon^2 \varphi_\varepsilon'^2 + \frac{1}{4\varepsilon} \beta \rho_{\nu x}(t_0) v_\varepsilon^4 \sin^2 \varphi_\varepsilon dt \\ &\quad - c' \delta + o_{\varepsilon \rightarrow 0}(1). \end{aligned}$$

for some  $c' = c'(B) > 0$ . We define  $T_\varepsilon^\pm := (t^\pm - t_0) \frac{\sqrt{\rho_{\nu x}(t_0)}}{2\varepsilon}$  and  $\tilde{f}(t) := f\left(\frac{\varepsilon}{\sqrt{\rho_{\nu x}(t_0)}} t + \tilde{t}_0\right)$  for  $f = v_\varepsilon, \varphi_\varepsilon, \eta_{\nu x, \varepsilon}$  or  $\rho_{\nu x}$ . A change of variables yields

$$\begin{aligned} \int_{t^-}^{t^+} v_\varepsilon'^2 + \frac{1}{4} v_\varepsilon^2 \varphi_\varepsilon'^2 dt &= \sqrt{\rho_{\nu x}(t_0)} \int_{T_\varepsilon^-}^{T_\varepsilon^+} \tilde{v}_\varepsilon'^2 + \frac{1}{4} \tilde{v}_\varepsilon^2 \tilde{\varphi}_\varepsilon'^2 dt \\ \frac{\rho_{\nu x}(t_0)}{\varepsilon} \int_{t^-}^{t^+} \frac{1}{2} (1 - v_\varepsilon^2)^2 + \frac{1}{4} \beta v_\varepsilon^4 \sin^2 \varphi_\varepsilon dt &= \sqrt{\rho_{\nu x}(t_0)} \int_{T_\varepsilon^-}^{T_\varepsilon^+} \frac{1}{2} (1 - \tilde{v}_\varepsilon^2)^2 + \frac{1}{4\varepsilon} \beta \tilde{v}_\varepsilon^4 \sin^2 \tilde{\varphi}_\varepsilon dt \end{aligned}$$

and thus

$$\mathcal{F}_{\varepsilon, \beta}(v_\varepsilon, \varphi_\varepsilon; (t^+, t^-)) \geq \rho_{\nu x}(t_0)^{3/2} \mathcal{G}_\beta(\tilde{v}_\varepsilon, \tilde{\varphi}_\varepsilon; (T_\varepsilon^-, T_\varepsilon^+)) - c' \delta + o_{\varepsilon \rightarrow 0}(1),$$

where for an interval  $I$  and a pair  $(v, \varphi)$ ,  $\mathcal{G}_\beta(v, \varphi; I)$  is the localized version of  $\mathcal{G}_\beta$  defined in (4.2).

Define now

$$\hat{v}_\varepsilon(t) := \begin{cases} \tilde{v}_\varepsilon(t) & \text{if } t \in (T_\varepsilon^-, T_\varepsilon^+) \\ \text{linear joint} & \text{if } t \in (T_\varepsilon^+, T_\varepsilon^+ + \delta) \cup (T_\varepsilon^- - \delta, T_\varepsilon^-) \\ 1 & \text{if } t \in \mathbb{R} \setminus (T_\varepsilon^- - \delta, T_\varepsilon^+ + \delta) \end{cases}$$



and

$$\hat{\varphi}_\varepsilon(t) := \begin{cases} \tilde{\varphi}_\varepsilon(t) & \text{if } t \in (T_\varepsilon^-, T_\varepsilon^+) \\ \text{linear joint} & \text{if } t \in (T_\varepsilon^+, T_\varepsilon^+ + \delta) \cup (T_\varepsilon^- - \delta, T_\varepsilon^-) \\ \varphi(t^-) & \text{if } t \in (-\infty, T_\varepsilon^- - \delta) \\ \varphi(t^+) & \text{if } t \in (T_\varepsilon^+ + \delta, +\infty) \end{cases}.$$

We have that  $(\hat{v}_\varepsilon, \hat{\varphi}_\varepsilon)$  is admissible for  $\bar{\sigma}_\beta$  so

$$\mathcal{G}_\beta(\tilde{v}_\varepsilon, \tilde{\varphi}_\varepsilon; (T_\varepsilon^-, T_\varepsilon^+)) \geq \bar{\sigma}_\beta + o_{\varepsilon \rightarrow 0}(1).$$

Hence,

$$\varepsilon \mathcal{F}_{\varepsilon, \beta}(v_\varepsilon, \varphi_\varepsilon; (t^+, t^-)) \geq \sigma_{\nu x, \beta}(t_0) + o_{\varepsilon \rightarrow 0}(1) - c' \delta. \quad (5.3)$$

Since  $\varphi \in BV_{loc}(\mathcal{D}_{\nu x}, \{0, \pi\})$  we have  $B \cap J_\varphi = \{t_0, \dots, t_N\}$  for some  $N \in \mathbb{N}$ . Consider  $\delta_0 > 0$  such that for  $\delta \in (0, \delta_0)$ , the intervals  $I_\delta = (t_0 - \delta, t_0 + \delta)$  are disjoint and contained in  $B$ . Reasoning as before and since (5.3) holds for every  $\delta \in (0, \delta_0)$ , we obtain

$$\varepsilon \mathcal{F}_{\varepsilon, \beta}(v_\varepsilon, \varphi_\varepsilon; \mathcal{D}_{\nu x}) \geq \sum_{i=0}^N \sigma_{\nu x, \beta}(t_i) + o_{\varepsilon \rightarrow 0}(1).$$

Thus,

$$\liminf_{\varepsilon \rightarrow 0} \varepsilon \mathcal{F}_{\varepsilon, \beta}(v_\varepsilon, \varphi_\varepsilon; \mathcal{D}_{\nu x}) \geq \sum_{t \in B \cap J_\varphi} \sigma_{\nu x, \beta}(t) = \int_B \frac{\sigma_{\nu x, \beta}}{\pi} |\varphi'| = \mathcal{F}_\beta(v, \varphi; B).$$

This yields (5.2) since the choice of  $B$  was arbitrary.  $\square$

We can now prove the  $\Gamma$ -liminf. For any  $\varphi \in BV_{loc}(\mathcal{D})$ , we define the localised lower  $\Gamma$ -limit of  $\varepsilon \mathcal{F}_{\varepsilon, \beta}$  as the set function defined in  $\mathcal{A}(\mathcal{D})$  by

$$F'(\varphi; A) := \inf \left\{ \liminf_{\varepsilon \rightarrow 0} \varepsilon \mathcal{F}_\varepsilon(v_\varepsilon, \varphi_\varepsilon; A); (v_\varepsilon, \varphi_\varepsilon) \rightarrow (1, \varphi) \text{ in } L^1_{loc}(\mathcal{D}) \times L^1_{loc}(\mathcal{D}) \right\},$$

and we write  $F'(\varphi) := F'(\varphi; \mathcal{D})$ .

**Proposition 5.3.** ( $\Gamma$ -liminf) For any  $\varphi \in BV_{loc}(\mathcal{D}; \{0, \pi\})$ ,

$$F'(\varphi) \geq \mathcal{F}_\beta(\varphi). \quad (5.4)$$

*Proof.* Consider any fixed open set  $A$  relatively compact in  $\mathcal{D}$ ,  $\nu \in \mathbb{S}^{n-1}$  and  $\varphi \in BV(A, \{0, \pi\})$ . Let then  $(v_\varepsilon, \varphi_\varepsilon)$  be such that  $v_\varepsilon \rightarrow 1$  and  $\varphi_\varepsilon \rightarrow \varphi$  in  $L^1(A)$  and such that

$$\liminf_{\varepsilon \rightarrow 0} \varepsilon \mathcal{F}_{\varepsilon, \beta}(v_\varepsilon, \varphi_\varepsilon; A) = F'(\varphi; A).$$

We may assume that  $F'(\varphi, A) < \infty$ , so that (5.1) is satisfied. From Fubini's Theorem, there holds

$$\varepsilon \mathcal{F}_{\varepsilon, \beta}(v_\varepsilon, \varphi_\varepsilon; A) \geq \int_{A_\nu} \varepsilon \mathcal{F}_{\varepsilon, \beta}(v_\varepsilon, \nu x, \varphi_\varepsilon, \nu x; A_{\nu x}) d\mathcal{H}^{n-1},$$

with  $(v_\varepsilon, \nu x, \varphi_\varepsilon, \nu x) \rightarrow (1, \varphi_{\nu x})$  for a.e.  $x \in A_\nu$ . Then, Fatou's lemma, Fubini's formula, (2.4) and Proposition 5.2 yield

$$\liminf_{\varepsilon \rightarrow 0} \varepsilon \mathcal{F}_{\varepsilon, \beta}(v_\varepsilon, \varphi_\varepsilon; A) \geq \int_{A_\nu} d\mathcal{H}^{n-1}(x) \int_{A_{\nu x}} \frac{\sigma_{\nu x, \beta}}{\pi} |\varphi'_{\nu x}| = \int_{A \cap J_\varphi} \sigma_\beta(x) |\langle \nu_\varphi, \nu \rangle| d\mathcal{H}^{n-1}.$$

Notice that the last equality holds because  $\varphi$  is the characteristic function of a set with finite perimeter in  $A$ . Hence,

$$F'(\varphi; A) \geq \int_{A \cap J_\varphi} \sigma_\beta(x) |\langle \nu_\varphi, \nu \rangle| d\mathcal{H}^{n-1}.$$

Since all the functions  $F_\varepsilon$  are local,  $F'(\varphi; \cdot)$  is super-additive on open sets with disjoint compact closures. We may apply [11, Prop. 1.16] with  $\Omega = \mathcal{D}$ ,  $\lambda = \sigma_\beta(x) \mathcal{H}^{n-1} \llcorner \partial^* \{\varphi = \pi\}$  (where we recall that  $\partial^* E$  denotes the reduced boundary of  $E$ ) and  $\psi_i = |\langle \nu_\varphi, \nu_i \rangle|$ , where  $\{\nu_i\}$  is a dense family in  $\mathbb{S}^{n-1}$ . Remarking that  $\sup_i |\langle \nu_\varphi, \nu_i \rangle| = 1$ , we obtain

$$F'(\varphi; A) \geq \int_{A \cap J_\varphi} \sigma_\beta(x) d\mathcal{H}^{n-1} = \mathcal{F}_\beta(\varphi; A),$$

which yields (5.4). □

## 5.2 $\Gamma$ -limsup

In this section we construct a recovery sequence and prove the  $\Gamma$ -limsup. Using the following lemma, we may restrict our selves to prove the inequality for the  $\Gamma$ -limsup for functions in

$$X := \{\varphi = \pi \mathbf{1}_A; A \text{ relatively compact open set of } \mathcal{D} \text{ of class } C^\infty\}.$$

**Lemma 5.4.** *Let  $\varphi = \pi \mathbf{1}_A \in BV_{loc}(\mathcal{D})$ . There exists a sequence  $\{\varphi_k = \pi \mathbf{1}_{A_k}\}_{k \in \mathbb{N}}$  in  $X$  such that:*

- (i)  $\lim_{k \rightarrow \infty} \mathcal{L}^n((A_k \cap \mathcal{D}) \Delta A) = 0$ ,
- (ii)  $\limsup_{k \rightarrow \infty} \mathcal{F}_\beta(\varphi_k) \leq \mathcal{F}_\beta(\varphi)$ ,
- (iii)  $\int_{A_k} \rho dx = \int_A \rho dx$  .

The proof of Lemma 5.4 uses the continuity of  $\sigma_\beta$  with respect to  $x$  and follows closely the proof of [10, Prop. 4.1], therefore we omit it here.

We first construct in Proposition 5.5 a recovery sequence for functions in  $X$ . We then explain in Lemma 5.6 how to take into account the mass constraint (1.3).

**Proposition 5.5 ( $\Gamma$ -limsup).** *Let  $\beta > 0$  and  $\varphi = \pi \mathbf{1}_A \in X$ , then there exists a sequence of functions  $(v_\varepsilon, \varphi_\varepsilon) \in Y(\mathcal{D})$  such that*

$$(v_\varepsilon, \varphi_\varepsilon) \rightarrow (1, \varphi) \quad \text{in} \quad L^1_{loc}(\mathcal{D}) \times L^1_{loc}(\mathcal{D}) \quad (5.5)$$

and

$$\overline{\lim}_{\varepsilon \rightarrow 0} \varepsilon \mathcal{F}_{\varepsilon, \beta}(v_\varepsilon, \varphi_\varepsilon) \leq \mathcal{F}_\beta(\varphi). \quad (5.6)$$

*Proof.* Define the signed distance to  $\partial A$  by  $d(x) := \text{dist}(x, A) - \text{dist}(x, \mathbb{R}^2 \setminus A)$ . For sufficiently small  $t > 0$ , the projection  $\Pi$  on  $\partial A$  is well defined in the set  $\{x \in D; |d(x)| < t\}$  and  $d$  is a Lipschitz function therein with  $|\nabla d| = 1$  a.e. . Define also

$$f(\eta, v, \varphi, p, q) := \frac{1}{2} \left( \eta^2 |p|^2 + \frac{1}{2} \eta^4 (1 - v^2)^2 + \frac{1}{4} \eta^2 v^2 |q|^2 + \frac{1}{4} \beta \eta^4 v^4 \sin^2 \varphi \right).$$

Let  $(v, \varphi)$  be a minimiser of  $\bar{\sigma}_\beta$  and for  $x \in \mathcal{D}$ , let  $v_x(t) := v(\rho(x)^{1/2}t)$ ,  $\varphi_x(t) := \varphi(\rho(x)^{1/2}t)$  and for  $\ell > 0$  let

$$v_{x, \ell} := (1 + \ell)v_x \wedge 1 \quad \text{and} \quad \varphi_{x, \ell} := 0 \vee \left( ((1 + 2\ell)\varphi_x - \ell) \wedge 1 \right).$$

Notice that  $(v_{x, \ell}, \varphi_{x, \ell})$  converges pointwise to  $(v_x, \varphi_x)$  as  $\ell \rightarrow 0$ , and that there exists  $C > 0$  such that for every  $\ell \in (0, 1)$  and  $x \in \mathcal{D}$ ,

$$f(\sqrt{\rho}(x), v_{x, \ell}, \varphi_{x, \ell}, v'_{x, \ell}, \varphi'_{x, \ell}) \leq C f(\sqrt{\rho}(x), v_x, \varphi_x, v'_x, \varphi'_x). \quad (5.7)$$

Therefore, thanks to the dominated convergence Theorem, for every  $\delta > 0$  and every  $x \in \mathcal{D}$ , there exists  $\ell_x$  such that for  $\ell \leq \ell_x$ ,

$$\int_{\mathbb{R}} f(\sqrt{\rho}(x), v_{x, \ell}, \varphi_{x, \ell}, v'_{x, \ell}, \varphi'_{x, \ell}) dt \leq \sigma_\beta(x) + \frac{\delta}{2}. \quad (5.8)$$

Fix from now on such a  $\delta > 0$ . Thanks to the compactness of  $\partial A$  and the continuity of  $\sigma_\beta$ , there is a finite family  $\{\Sigma_i\}_{i \in I}$  of open disjoint subsets of  $\partial A$  such that  $\mathcal{H}^{n-1}(\partial A \setminus \cup_{i \in I} \Sigma_i) = 0$  and

$$\sigma_\beta(x_i) \leq \sigma_\beta(x) + \frac{\delta}{2} \quad \text{in} \quad \Sigma_i \quad (5.9)$$

for every  $i \in I$ . Let then  $\ell := (\min_{i \in I} \ell_{x_i}) \wedge \delta$  and define  $\Sigma_i^\delta := \{x \in \Sigma_i; \text{dist}(x, \partial \Sigma_i) > \ell\}$  so that

$$\mathcal{H}^{n-1}(\Sigma_i \setminus \Sigma_i^\delta) = o_{\delta \rightarrow 0}(1). \quad (5.10)$$

For  $\varepsilon, T > 0$  define

$$\begin{aligned} W_\varepsilon &:= \{x \in \mathbb{R}^n; |d(x)| < \varepsilon T\} \\ B_i &:= \{x \in W_\varepsilon; \Pi(x) \in \Sigma_i^\delta\} \\ C_i &:= \{x \in W_\varepsilon; \Pi(x) \in \Sigma_i \setminus \Sigma_i^\delta\}. \end{aligned}$$

Notice that for every given  $T$ , for  $\varepsilon$  small enough  $W_\varepsilon$  is contained in some fixed compact set of  $\mathcal{D}$  containing  $A$ . Consider a family  $\{\theta_i\}_{i \in I}$  of smooth functions such that

$$\sum_{i \in I} \theta_i = 1 \quad \text{on } \partial A \quad \text{and} \quad \theta_i = 1 \quad \text{in } \Sigma_i^\delta \quad \forall i \in I,$$

and define

$$(v_\varepsilon, \varphi_\varepsilon)(x) = \begin{cases} \sum_{i \in I} \theta_i(\Pi(x)) \left( v_{x_i, \ell} \left( \frac{d(x)}{\varepsilon} \right), \varphi_{x_i, \ell} \left( \frac{d(x)}{\varepsilon} \right) \right) & \text{if } |d(x)| \leq \varepsilon T_\delta \\ (1, \pi) & \text{if } d(x) \geq \varepsilon T_\delta \\ (1, 0) & \text{if } d(x) \leq -\varepsilon T_\delta \end{cases}; \quad (5.11)$$

where  $T_\delta$  is big enough so that  $v_{x_i, \ell} = 1$  in  $\mathbb{R} \setminus [-T_\delta, T_\delta]$ ,  $\varphi_{x_i, \ell} = 0$  in  $(-\infty, T_\delta]$  and  $\varphi_{x_i, \ell} = \pi$  in  $[T_\delta, +\infty)$  for every  $i \in I$ .

The functions  $(v_\varepsilon, \varphi_\varepsilon)$  are Lipschitz continuous and converge to  $(1, \varphi)$  in  $L^1_{loc}(\mathcal{D}) \times L^1_{loc}(\mathcal{D})$ . Defining

$$\xi_\varepsilon := \frac{1}{\varepsilon} f(\eta_\varepsilon, v_\varepsilon, \varphi_\varepsilon, \varepsilon^2 \nabla v_\varepsilon, \varepsilon^2 \nabla \varphi_\varepsilon),$$

there exists  $C > 0$  such that

$$|\xi_\varepsilon| \leq C \varepsilon^{-1}, \quad (5.12)$$

and since  $|\nabla d| = 1$  in  $W_\varepsilon$ ,

$$\xi_\varepsilon(x) = |\nabla d / \varepsilon| f(\eta_\varepsilon, v_{x_i, \ell} \circ d / \varepsilon, \varphi_{x_i, \ell} \circ d / \varepsilon, v'_{x_i, \ell} \circ d / \varepsilon, \varphi'_{x_i, \ell} \circ d / \varepsilon) \quad (5.13)$$

holds in  $B_i$  for all  $i \in I$ .

Using (5.10) and (5.12) we compute

$$\begin{aligned} \varepsilon \mathcal{F}_{\varepsilon, \beta}(v_\varepsilon, \varphi_\varepsilon) &= \sum_{i \in I} \int_{B_i} \xi_\varepsilon(x) dx + \sum_{i \in I} \int_{C_i} \xi_\varepsilon(x) dx \\ &\leq \sum_{i \in I} \int_{B_i} \xi_\varepsilon(x) dx + \frac{C}{\varepsilon} \mathcal{L}^n \left( \bigcup_{i \in I} C_i \right) \\ &= \sum_{i \in I} \int_{B_i} \xi_\varepsilon(x) dx + r_\delta^1 \end{aligned} \quad (5.14)$$

where  $r_\delta^1 = o_{\delta \rightarrow 0}(1)$ . Using (5.13) and the coarea formula [10, Prop. 2.4] applied to  $u = d/\varepsilon$ , we obtain

$$\int_{B_i} \xi_\varepsilon(x) dx = \int_{-T_\delta}^{T_\delta} \int_{\{|d|=\varepsilon t\} \cap B_i} f(\eta_\varepsilon(x), v_{x_i, \ell}(t), \varphi_{x_i, \ell}(t), v'_{x_i, \ell}(t), \varphi'_{x_i, \ell}(t)) d\mathcal{H}^{n-1}(x) dt.$$

Since  $B_i \subset \subset \mathcal{D}$ , estimate (3.7) gives

$$\int_{B_i} \xi_\varepsilon(x) dx = \int_{-T_\delta}^{T_\delta} \int_{\{|d|=\varepsilon t\} \cap B_i} f(\sqrt{\rho}(x), v_{x_i, \ell}(t), \varphi_{x_i, \ell}(t), v'_{x_i, \ell}(t), \varphi'_{x_i, \ell}(t)) d\mathcal{H}^{n-1}(x) dt + r_{\delta, \varepsilon}^2$$

where  $r_{\delta, \varepsilon}^2 = o_{\varepsilon \rightarrow 0}(1)$ .

Hence, using Fubini's Theorem, (5.8) and (5.9) we find

$$\begin{aligned} \overline{\lim}_{\varepsilon \rightarrow 0} \int_{B_i} \xi_\varepsilon(x) dx &\leq \int_{\Sigma_i^\delta} \int_{-T_\delta}^{T_\delta} f(\sqrt{\rho}(x_i), v_{x_i, \ell}, \varphi_{x_i, \ell}, v'_{x_i, \ell}, \varphi'_{x_i, \ell}) dt d\mathcal{H}^{n-1}(x) \\ &\leq \int_{\Sigma_i^\delta} (\sigma_\beta(x) + \delta) d\mathcal{H}^{n-1}(x). \end{aligned} \quad (5.15)$$

Putting together (5.14) and (5.15) we obtain

$$\lim_{\delta \rightarrow 0} \overline{\lim}_{\varepsilon \rightarrow 0} \varepsilon \mathcal{F}_{\varepsilon, \beta}(v_\varepsilon, \varphi_\varepsilon) \leq \int_{\partial A} \sigma_\beta d\mathcal{H}^{n-1} = \mathcal{F}_\beta(\varphi).$$

Finally, a diagonal argument yields (5.6). □

**Lemma 5.6. (mass constraint)** *Let  $\beta > 0$  and  $\varphi = \pi \mathbf{1}_A \in X$  satisfying (1.7). Then, there exists a sequence of functions  $(v_\varepsilon, \varphi_\varepsilon)$  satisfying (1.3) for every  $\varepsilon > 0$  for which (5.5) and (5.6) hold.*

*Proof.* Notice first that since  $\int_A \rho dx = \alpha_2 > 0$  and  $\int_{A^c} \rho dx = \alpha_1 > 0$ , there exist  $x^+$  in  $A$  and  $x^-$  in  $\mathcal{D} \setminus \overline{A}$ . With the notations of Proposition 5.5, consider  $(v_\varepsilon, \varphi_\varepsilon)$  as in (5.11) with  $d$  given by the signed distance to  $A_\varepsilon := (A \cup B_\varepsilon^+) \setminus B_\varepsilon^-$ , where  $B_\varepsilon^\pm := B(x^\pm, \delta_\varepsilon^\pm)$  and

$$0 \leq \delta_\varepsilon^\pm \leq \varepsilon^{\gamma/n} \quad \text{with } \gamma \in (0, 1). \quad (5.16)$$

Defining  $\hat{v}_\varepsilon = \|\eta_\varepsilon v_\varepsilon\|_2^{-1} v_\varepsilon$ , the first equality in (1.3) holds. Using  $\|\eta_\varepsilon\|_2 = 1$  we estimate

$$\|\eta_\varepsilon v_\varepsilon\|_2^2 = 1 + \int_{W_\varepsilon} \eta_\varepsilon^2 (v_\varepsilon^2 - 1) dx = 1 + O(\varepsilon). \quad (5.17)$$

Hence, the sequence  $(\hat{v}_\varepsilon, \varphi_\varepsilon)$  converges to  $(1, \varphi)$  in  $L^1_{loc}(\mathcal{D}) \times L^1_{loc}(\mathcal{D})$  and inequality (5.6) still holds.

Using estimates (3.5)-(3.7) we get

$$\begin{aligned} \int_{\mathbb{R}^n} \eta_\varepsilon^2 v_\varepsilon^2 \cos \varphi_\varepsilon dx &= \int_{\mathbb{R}^n} \eta_\varepsilon^2 (-\mathbf{1}_{A_\varepsilon} + \mathbf{1}_{\mathbb{R}^n \setminus A_\varepsilon}) dx + O(\varepsilon) \\ &= \int_{\mathbb{R}^n} \rho (-\mathbf{1}_A + \mathbf{1}_{\mathcal{D} \setminus A}) dx + 2 \int_{\mathbb{R}^n} \eta_\varepsilon^2 (\mathbf{1}_{B_\varepsilon^+} - \mathbf{1}_{B_\varepsilon^-}) dx + O(\varepsilon^\tau) \end{aligned}$$

where  $\tau := \min\{a, b, c\} > 0$ . Let  $c > 0$  be such that  $\eta_\varepsilon^2 > c$  in  $B_\varepsilon^- \cup B_\varepsilon^+$  and fix  $\gamma \in (0, \tau)$ . For  $\varepsilon$  small enough, thanks to (5.16) and (5.17) we obtain for  $(\delta_\varepsilon^+, \delta_\varepsilon^-) = (\varepsilon^\gamma, 0)$ ,

$$\int_{\mathbb{R}^n} \eta_\varepsilon^2 \hat{v}_\varepsilon^2 \cos \varphi_\varepsilon dx \geq \alpha_1 - \alpha_2 + 2c|B_1| \varepsilon^\gamma + O(\varepsilon^\tau) > \alpha_1 - \alpha_2$$

and for  $(\delta_\varepsilon^+, \delta_\varepsilon^-) = (0, \varepsilon^\gamma)$ ,

$$\int_{\mathbb{R}^n} \eta_\varepsilon^2 \hat{v}_\varepsilon^2 \cos \varphi_\varepsilon dx \leq \alpha_1 - \alpha_2 - 2c|B_1| \varepsilon^\gamma + O(\varepsilon^\tau) < \alpha_1 - \alpha_2.$$

We conclude by continuity that there exists  $(\delta_\varepsilon^+, \delta_\varepsilon^-) \in [0; \varepsilon^\gamma] \times [0; \varepsilon^\gamma]$  such that the second equality in (1.3) is satisfied. □

## 6 Asymptotic analysis of the surface tension

In this section we study the asymptotic behavior of  $\bar{\sigma}_\beta$  when  $\beta$  tends to zero or infinity.

### 6.1 Vanishing $\beta$

When  $\beta$  goes to zero, we expect the two condensates not to segregate anymore. This can be seen as an interpretation of the following theorem which shows that in the limit  $\beta \rightarrow 0$ , the surface tension  $\bar{\sigma}_\beta$  vanishes.

**Theorem 6.1.** *The functional  $\mathcal{G}_\beta$   $\Gamma$ -converges when  $\beta \rightarrow 0$  to*

$$\mathcal{G}_0(v, \varphi) := \frac{1}{2} \int_{\mathbb{R}} v'^2 + W(v) + \frac{1}{4} v^2 \varphi'^2 dt,$$

which is defined on all the pairs of functions  $(v, \varphi)$  with  $\varphi \in [0, \pi]$  (but without conditions at infinity). As a consequence,

$$\lim_{\beta \rightarrow 0} \bar{\sigma}_\beta = 0$$

*Proof.* Since the compactness and  $\Gamma$ -liminf inequality are readily obtained, let us focus on the  $\Gamma$ -limsup. For this, let  $(v, \varphi)$  be such that  $\mathcal{G}_{\rho,0}(v, \varphi) < +\infty$ . Let then  $v_\beta := v$  and

$$\varphi_\beta(t) := \begin{cases} 0 & \text{for } t \in \left(-\infty, -\frac{2}{\sqrt{\beta}}\right] \\ \sqrt{\beta} \varphi\left(-\frac{1}{\sqrt{\beta}}\right) \left(t + \frac{1}{\sqrt{\beta}}\right) + \varphi\left(-\frac{1}{\sqrt{\beta}}\right) & \text{for } t \in \left[-\frac{2}{\sqrt{\beta}}, -\frac{1}{\sqrt{\beta}}\right] \\ \varphi(t) & \text{for } t \in \left[-\frac{1}{\sqrt{\beta}}, \frac{1}{\sqrt{\beta}}\right] \\ \sqrt{\beta} \left(\pi - \varphi\left(\frac{1}{\sqrt{\beta}}\right)\right) \left(t - \frac{1}{\sqrt{\beta}}\right) + \varphi\left(\frac{1}{\sqrt{\beta}}\right) & \text{for } t \in \left[\frac{1}{\sqrt{\beta}}, \frac{2}{\sqrt{\beta}}\right] \\ \pi & \text{for } t \in \left[\frac{2}{\sqrt{\beta}}, +\infty\right). \end{cases}$$

A simple computation then shows that

$$|\mathcal{G}_\beta(v_\beta, \varphi_\beta) - \mathcal{G}_0(v, \varphi)| \leq C\sqrt{\beta}.$$

□

**Remark 6.2.** From the proof, we see that  $\bar{\sigma}_\beta \leq C\sqrt{\beta}$  which is exactly the scaling predicted in the physics literature [6, 31, 24, 7].

## 6.2 Study of $\beta \rightarrow +\infty$ and symmetry breaking

In this section we study the behavior of the limiting energy when  $\beta \rightarrow +\infty$ . We prove that in this case, we recover the functional

$$\mathcal{F}_\infty(\varphi) = \int_{\mathcal{D}} \frac{\sigma_\infty}{\pi} |D\varphi|$$

derived in [3], where  $\sigma_\infty(x) := \frac{2\sqrt{2}}{3}\rho^{3/2}(x)$ .

Let us prove that  $\lim_{\beta \rightarrow \infty} \bar{\sigma}_\beta = \bar{\sigma}_\infty := \frac{2\sqrt{2}}{3}$  with a rate of approximation of the order of  $\beta^{-1/4}$  as predicted in the physical literature [32].

**Proposition 6.3.**

$$\bar{\sigma}_\infty \geq \bar{\sigma}_\beta \geq \bar{\sigma}_\infty - \sqrt{2}C\beta^{-1/4}.$$

In particular,  $\lim_{\beta \rightarrow +\infty} \bar{\sigma}_\beta = \bar{\sigma}_\infty$ .

*Proof.* The upper bound is a consequence of (4.4) with  $m = 0$ . For the lower bound, we first notice that from Lemma 4.3, we know that for every minimiser  $v_\beta$  of  $\bar{\sigma}_\beta$ , there holds  $\inf v_\beta \leq C\beta^{-1/4}$  so that as in the proof of Proposition 4.2,

$$\bar{\sigma}_\beta \geq \sqrt{2} \left( \frac{2}{3} - \inf v_\beta + (\inf v_\beta)^3 \left( \frac{1}{3} + \frac{\beta^{1/2}}{2\sqrt{2}} \right) \right) \geq \bar{\sigma}_\infty - \sqrt{2}C\beta^{-1/4}.$$

□

We then easily deduce the convergence of the full energy:

**Proposition 6.4.** *The  $\Gamma$ -limit in  $L^1_{loc}(\mathcal{D})$  as  $\beta \rightarrow +\infty$  of  $\mathcal{F}_\beta$  is  $\mathcal{F}_\infty$ .*

Let us now concentrate on the harmonic potential  $V = |x|^2$  and let us study the minimisers of  $\mathcal{F}_\infty$  under the mass constraint (1.7) to show the symmetry breaking. Let us point out again that since the functional  $\mathcal{F}_\beta$  differs from  $\mathcal{F}_\infty$  only by a (multiplicative) constant, the minimizers of the two functionals coincide. In particular, they do not depend on  $\beta$ . To prove symmetry breaking, we closely follow the ideas of [3, Cor. 1.3], where such a result was derived for  $n = 2$ . Let us first prove that the minimizer among radially symmetric sets is either the centered ball or the outside annulus.

**Proposition 6.5.** *Let  $\alpha \in [0, 1]$  and let  $1 \geq R_\alpha \geq 0$  be such that  $\int_{B_{\lambda R_\alpha}} \rho dx = \alpha$  then letting  $f(\alpha) := \mathcal{F}_\infty(\pi \mathbf{1}_{B_{\lambda R_\alpha}})$ ,*

$$\min\{\mathcal{F}_\infty(A) : A \text{ radially symmetric and satisfies (1.7)}\} = \min(f(\alpha), f(1 - \alpha))$$

*Proof.* Let us first notice that  $R_\alpha$  is determined by  $\alpha = \mathcal{H}^{n-1}(\mathbb{S}^{n-1})\lambda^{n+2} \int_0^{R_\alpha} (1-r^2)r^{n-1} dr$ , so that

$$R'_\alpha = (\mathcal{H}^{n-1}(\mathbb{S}^{n-1})\lambda^{n+2}(1-R_\alpha^2)R_\alpha^{n-1})^{-1} \quad (6.1)$$

where by a slight abuse of notation we identified  $R_\alpha$  with the function  $\alpha \rightarrow R_\alpha$ . A simple computation shows that for  $\alpha \in (0, 1)$ ,

$$f(\alpha) = \frac{2\sqrt{2}}{3}\mathcal{H}^{n-1}(\mathbb{S}^{n-1})\lambda^{n+2}R_\alpha^{n-1}(1-R_\alpha^2)^{3/2} \quad (6.2)$$

and  $f(0) = f(1) = 0$ . It then follows from (6.1) that for  $\alpha \in (0, 1)$ ,

$$f''(\alpha) = -\frac{2\sqrt{2}}{3\mathcal{H}^{n-1}(\mathbb{S}^{n-1})\lambda^{n+2}}(1-R_\alpha^2)^{-5/2}R_\alpha^{-(n+1)}((n-1)(1-R_\alpha^2) + 3R_\alpha^2) < 0$$

and thus  $f$  is strictly concave <sup>1</sup>.

Let now  $A(R_1, R_2) := \{\lambda R_1 < |x| \leq \lambda R_2\}$  be an annulus with  $0 < R_1 < R_2 < 1$  and  $\int_{A(R_1, R_2)} \rho dx = \alpha$ , then letting

$$\beta_1 := \int_{B_{\lambda R_1}} \rho dx \quad \text{and} \quad \beta_2 := \int_{\mathcal{D} \setminus B_{\lambda R_2}} \rho dx$$

we have  $\beta_1 + \beta_2 = 1 - \alpha$  and

$$f_1(\beta_1) := \mathcal{F}_\infty(\pi \mathbf{1}_{A(R_1, R_2)}) = f(\beta_1) + f(\beta_1 + \alpha)$$

is a strictly concave function of  $\beta_1$  and thus attains its minimum for  $\beta_1 = 0$  or  $\beta_1 = 1 - \alpha$ . This proves that

$$\inf_{R_1, R_2} \mathcal{F}_\infty(\pi \mathbf{1}_{A(R_1, R_2)}) = \min(f(\alpha), f(1 - \alpha)).$$

As in [3], by induction it implies that any union of  $m \in \mathbb{N}$  annuli has energy larger than  $\min(f(\alpha), f(1 - \alpha))$  which in turn by approximation implies that any radially symmetric set has energy at least  $\min(f(\alpha), f(1 - \alpha))$ .  $\square$

In order to show symmetry breaking it is thus enough to construct a non radially symmetric set with energy smaller than  $\min(f(\alpha), f(1 - \alpha))$ .

**Proposition 6.6.** *Let  $n = 1, 2$  or  $3$  then there exists  $\alpha_0 \in (0, 1/2)$  such that if  $\alpha \in (\alpha_0, 1 - \alpha_0)$ , the minimizers of  $\mathcal{F}_\infty$  under the mass constraint (1.7) are not radially symmetric.*

*Proof.* For  $n = 2$ , the proof is already given in [3, Cor. 1.3]. For  $n = 1$ , consider the interval  $A_\alpha := (-\lambda, t_\alpha]$  where  $t_\alpha$  is chosen so that  $\int_{-\lambda}^{t_\alpha} (\lambda^2 - |x|^2) dx = \alpha$ . We then have  $\mathcal{F}_\infty(\pi \mathbf{1}_{A_\alpha}) = \frac{2\sqrt{2}}{3}\sqrt{\lambda^2 - t_\alpha^2}$ . By continuity of  $\mathcal{F}_\infty(\pi \mathbf{1}_{A_\alpha})$  and  $f$  with respect to  $\alpha$ , it is enough showing that

<sup>1</sup>notice that for  $n = 1$ ,  $f$  is discontinuous at 0 but is still strictly concave since  $f \geq f(0)$  and  $f$  is strictly concave in  $(0, 1)$



$\mathcal{F}_\infty(\pi \mathbf{1}_{A_\alpha}) < \min(f(\alpha), f(1-\alpha))$  for  $\alpha = 1/2$  so that on the one hand  $t_\alpha = 0$  and  $\mathcal{F}_\infty(\pi \mathbf{1}_{A_\alpha}) = \frac{2\sqrt{2}}{3}\lambda^3$  and on the other hand  $f(1/2) = \frac{2\sqrt{2}}{3}2\lambda^3(1 - R_\alpha^2)^{3/2}$ . It is thus enough checking that

$$2(1 - R_\alpha^2)^{3/2} > 1.$$

We find that  $R_\alpha \approx 0.35$  and thus  $2(1 - R_\alpha^2)^{3/2} \approx 1.65 > 1$ .

For  $n = 3$ , let us consider in cylindrical coordinates the set  $A_\alpha := \{(r \exp(i\theta), z) : r \in (0, \lambda), \theta \in (0, \theta_\alpha), z \in (-\lambda, \lambda)\}$  where  $\theta_\alpha$  is such that (1.7) is satisfied. It is readily seen that  $\mathcal{F}_\infty(\pi \mathbf{1}_{A_\alpha}) = \frac{2\sqrt{2}}{3} \frac{2\pi}{5} \lambda^5$  (notice that it does not depend on  $\alpha$ ). As for  $n = 1$ , it is enough to compare it with  $f(1/2) = \frac{2\sqrt{2}}{3} 4\pi \lambda^5 R_\alpha^2 (1 - R_\alpha^2)^{3/2}$  so that we are left to check that

$$10R_\alpha^2(1 - R_\alpha^2)^{3/2} > 1.$$

We find  $R_\alpha \approx 0.64$  and thus  $10R_\alpha^2(1 - R_\alpha^2)^{3/2} \approx 1.86 > 1$ . □

Using the properties of  $\Gamma$ -convergence we derive the analogous result for the minimisers of  $\mathcal{F}_{\varepsilon, \beta}$  with  $\varepsilon$  small enough:

**Corollary 6.7.** *Let  $n = 1, 2$  or  $3$  and  $V = |x|^2$ . There exists  $\delta_0 \in (0, 1/2)$  such that for  $\alpha_1 \in [\delta_0, 1 - \delta_0]$  and  $\beta > 0$ , there exists  $\varepsilon(\beta) > 0$  such that for  $0 < \varepsilon < \varepsilon(\beta)$ , the minimisers of  $\mathcal{F}_{\varepsilon, \beta}$  under the constraint (1.3) are not radially symmetric.*

## Acknowledgment

We thank P. Bella for pointing out the paper [14] and for suggesting the equipartition of the energy for the optimal profile. We are very grateful to B. Van Schaeybroeck for drawing our attention to the physics literature concerning the computation of the surface tension. We thank B. Merlet for pointing out a small mistake in Proposition 4.6. The authors wish to warmly thank the hospitality of the ‘Max Planck Institut für Mathematik’ in Leipzig, where this work was started.

## References

- [1] A. Aftalion. *Vortices in Bose-Einstein Condensates*, volume 67 of *Progress in Nonlinear Differential Equations and Their Applications*. Birkhäuser, 2006.
- [2] A. Aftalion, R.L. Jerrard, and J. Royo-Letelier. Non-existence of vortices in the small density region of a condensate. *J. Funct. Anal.*, 260:2387–2406, 2011.
- [3] A. Aftalion and J. Royo-Letelier. A minimal interface problem arising from a two component Bose-Einstein condensate via  $\Gamma$ -convergence. Accepted for publication in *Calc. Var. PDE*, 2014.
- [4] L. Ambrosio, N Fusco, and D. Pallara. *Functions of Bounded Variation and Free Discontinuity Problems*. Oxford Mathematical Monographs. Oxford University Press, 2000.

- [5] L. Ambrosio and V. M. Tortorelli. On the approximation of free discontinuity problems. *Boll. Un. Mat. Ital. B (7)*, 6(1):105–123, 1992.
- [6] P. Ao and S. T. Chui. Binary Bose-Einstein condensate mixtures in weakly and strongly segregated phases. *Phys. Rev. A*, 58:4836–4840, 1998.
- [7] R. A. Barankov. Boundary of two mixed Bose-Einstein condensates. *Phys. Rev. A*, 66:013612, 2002.
- [8] H. Berestycki, T.C. Lin, J. Wei, and C. Zhao. On phase-separation model: Asymptotics and qualitative properties. *Arch. Rational Mech. Anal.*, 208:163–200, 2013.
- [9] H. Berestycki, S. Terracini, K. Wang, and J. Wei. On entire solutions of an elliptic system modeling phase separations. *Adv. Math.*, 243:102–126, 2013.
- [10] G. Bouchitté. Singular perturbations of variational problems arising from a two-phase transition model. *Appl. Math. Optim.*, 21(3):289–314, 1990.
- [11] A. Braides. *Approximation of Free-Discontinuity Problems*, volume 1694 of *Lecture Notes in Mathematics*. Springer Berlin Heidelberg, 1998.
- [12] A. Braides.  *$\Gamma$ -convergence for beginners*, volume 22 of *Oxford Lecture Series in Mathematics and its Applications*. Oxford University Press, Oxford, 2002.
- [13] A. Capella, C. Melcher, and F. Otto. Wave-type dynamics in ferromagnetic thin films and the motion of Néel walls. *Nonlinearity*, 20(11):2519–2537, 2007.
- [14] M. Chermisi and C. Muratov. One-dimensional Néel walls under applied magnetic fields. *Nonlinearity*, 26:2935–2950, 2013.
- [15] M. Conti, S. Terracini, and G. Verzini. Asymptotic estimates for the spatial segregation of competitive systems. *Adv. Math.*, 195(2):524–560, 2005.
- [16] D. S. Hall, M. R. Matthews, J. R. Ensher, C. E. Wieman, and E. A. Cornell. Dynamics of component separation in a binary mixture of Bose-Einstein condensates. *Phys. Rev. Lett.*, 81(8):1539–1542, 1998.
- [17] R. Ignat and V. Millot. The critical velocity for vortex existence in a two-dimensional rotating Bose-Einstein condensate. *J. Funct. Anal.*, 233:260–306, 2006.
- [18] G. D. Karali and C. Sourdis. The ground state of a Gross-Pitaevskii energy with general potential in the Thomas-Fermi limit. Accepted for publication in *Arch. Rational Mech. Anal.*, 2014.
- [19] K. Kasamatsu, M. Tsubota, and M. Ueda. Vortices in multicomponent Bose-Einstein condensates. *Int. J. Mod. Phys. B*, 19(1835), 2005.

- [20] K. Kasamatsu, Y. Yasui, and M. Tsubota. Macroscopic quantum tunneling of two-component Bose-Einstein condensates. *Phys. Rev. A*, 64(053605), 2001.
- [21] L. Lassoued and P. Mironescu. Ginzburg-Landau type energy with discontinuous constraint. *J. Anal. Math.*, 77:1–26, 1999.
- [22] E. H. Lieb and M. Loss. *Analysis*, volume 14 of *Graduate Studies in Mathematics*. American Mathematical Society, Providence, RI, 1997.
- [23] P. Mason and A. Aftalion. Classification of the ground states and topological defects in a rotating two-component Bose-Einstein condensate. *Phys. Rev. A*, 84(3):033611, 2011.
- [24] I. E. Mazets. Waves on an interface between two phase-separated Bose-Einstein condensates. *Phys. Rev. A*, 65:033618, 2002.
- [25] D. J. McCarron, H. W. Cho, D. L. Jenkin, M. P. Köppinger, and S. L. Cornish. Dual-species Bose-Einstein condensate of  $^{87}\text{Rb}$  and  $^{133}\text{Cs}$ . *Phys. Rev. A*, 84:011603, 2011.
- [26] L. Modica. The gradient theory of phase transitions and the minimal interface criterion. *Arch. Rational Mech. Anal.*, 98(2):123–142, 1987.
- [27] B. Noris, H. Tavares, S. Terracini, and G. Verzini. Uniform Hölder bounds for nonlinear Schrödinger systems with strong competition. *Comm. Pure Appl. Math.*, 63(3):267–302, 2010.
- [28] P. Öhberg and S. Stenholm. Hartree-Fock treatment of the two-component Bose-Einstein condensate. *Phys. Rev. A*, 57(2):1272–1279, 1998.
- [29] S. B. Papp, J. M. Pino, and C. E. Wieman. Tunable miscibility in a dual-species Bose-Einstein condensate. *Phys. Rev. Lett.*, 101(4):040402, 2008.
- [30] J. Royo-Letelier. Segregation and symmetry breaking of strongly coupled two-component Bose-Einstein condensates in a harmonic trap. *Calc. Var. Partial Differential Equations*, 49:103–124, 2014.
- [31] E. Timmermans. Phase separation of Bose-Einstein condensates. *Phys. Rev. Lett.*, 81:5718–5721, 1998.
- [32] B. Van Schaeybroeck. Interface tension of Bose-Einstein condensates. *Phys. Rev. A*, 78:023624, 2008.
- [33] J. Wei and T. Weth. Asymptotic behaviour of solutions of planar elliptic systems with strong competition. *Nonlinearity*, 21(2):305–317, 2008.