



HAL
open science

Thermal anomaly in Enceladus' South Pole subsurface

Alice Le Gall, C. Leyrat, M. A. Janssen, Aurélien Stolzenbach, R. West, R. D. Lorenz, K. Mitchell, P. Ries

► **To cite this version:**

Alice Le Gall, C. Leyrat, M. A. Janssen, Aurélien Stolzenbach, R. West, et al.. Thermal anomaly in Enceladus' South Pole subsurface. European Planetary Science Congress 2013, Sep 2013, London, United Kingdom. pp.EPSC2013-808. hal-00922928

HAL Id: hal-00922928

<https://hal.science/hal-00922928>

Submitted on 8 Oct 2014

HAL is a multi-disciplinary open access archive for the deposit and dissemination of scientific research documents, whether they are published or not. The documents may come from teaching and research institutions in France or abroad, or from public or private research centers.

L'archive ouverte pluridisciplinaire **HAL**, est destinée au dépôt et à la diffusion de documents scientifiques de niveau recherche, publiés ou non, émanant des établissements d'enseignement et de recherche français ou étrangers, des laboratoires publics ou privés.

Thermal anomaly in Enceladus' South Pole subsurface

A. Le Gall (1), C. Leyrat (2), M.A. Janssen (3), A. Stolzenbach (1), R. West (3), R.D Lorenz (4), K. Mitchell (3), P. Ries (3) and the Cassini Radar Team

(1) Laboratoire Atmosphères, Milieux, Observations Spatiales (LATMOS), Université de Versailles Saint-Quentin (UVSQ) Paris, France (alice.legall@latmos.ipsl.fr), (2) Laboratoire d'Études Spatiales et d'Instrumentation en Astrophysique (LESIA), Observatoire de Paris-Meudon, Meudon, (3) Jet Propulsion Laboratory (JPL), California Institute of Technology, CA, USA, (4) Space Department, Johns Hopkins University Applied Physics Lab, Laurel, MD 20723, USA.

Abstract

On November 6, 2011, during the E16 flyby, the Cassini Radar had a unique opportunity to closely observe Enceladus in both its active and passive modes of operation. The E16 swath aimed at about 66°S, close to the active South polar rifted area. In this paper, we show that the radiometry data collected during this flyby revealed brightness temperatures much higher than expected, pointing to a geothermal anomaly in the subsurface. This anomaly could be indicative of a buried heat source, unless it is due to exotic thermal processes such as the solid-state greenhouse effect.

1. Introduction

At the beginning of the Cassini mission, the ISS (Imaging Science Subsystem) and CIRS (Composite Infra-Red Spectrometer) instruments discovered a geologically active region at the south pole of Saturn's icy moon Enceladus [1], previously famous for being one of the brightest bodies in the Solar System. Plumes venting material emanate from this region. Six years later, on November 6, 2011, the first-ever Synthetic Aperture Radar (SAR) image of Enceladus was acquired during the E16 flyby of the moon at the wavelength of 2-cm [2]. The SAR swath is located within the seemingly young South Pole Terrains, not far from the active sulci also known as the "tiger stripes" identified as the sources of the plumes.

Concurrently to the SAR image, radiometry data were collected in the passive mode of the instrument. The Cassini radiometer records the thermal emission from the surface in the microwave domain, at the same wavelength of 2-cm. Here, we compare the radiometry measurements to the expected microwave thermal emission from Enceladus' surface when assuming, in particular, no heat source in the subsurface.

2. Cassini radiometry observation of Enceladus' South Pole

The E16 radiometry data were collected with a ground footprint of 25-40 km across the track and ~5 km along. In its passive mode, the Cassini Radar/radiometer measures the 2-cm brightness temperature T_b of the surface that varies both with the emissivity e and the vertical temperature profile below the surface down to a depth which depends on the electrical properties of the subsurface ($T_b = eT_{eff}$ where T_{eff} is the physical temperature integrated over some depth). Typically, radio instruments sense 10 to 100 wavelengths into an icy crust and can thus provide unique insight into the compositional, thermal and physical (porosity, roughness) state of planetary regoliths at depths much greater than the ones sampled by thermal IR spectrometers. In particular, the microwave radiometer can be used to detect possible endogenic activity beneath the surface. The measured calibrated brightness temperatures during E16 cover a range from 33 to 60 K (see Fig. 1). As expected (Kirchhoff's law), they are anti-correlated with the concurrent radar data.

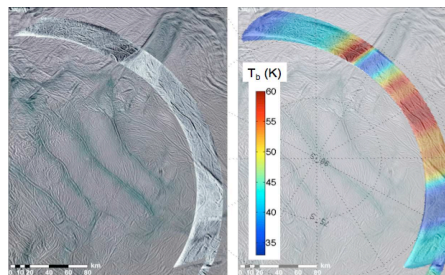


Figure 1: (Left) E16 SAR swath overlaid on an ISS mosaic of Enceladus' South Pole. (Right) Brightness temperature (in K) measured by the radiometer (passive mode) along the swath.

3. Thermal emission modelling

In absence of endogenic emission, the temperature structure of any airless satellite results from a balance between solar insolation, heat transport within the subsurface by grain-to-grain conduction and re-radiation outward. We have developed a thermal model that accounts not only for the diurnal but also for the seasonal variations of the temperature that cannot be ignored at the depths sensed by the radiometer. It is run for a range of specified thermal inertias and volumetric heat capacities, through enough heliocentric orbits to achieve periodic steady state. Solar eclipses are included while Saturnshine is negligible.

Outputs are then coupled with a radiative transfer model in order to infer the blackbody brightness temperature sensed by the instrument. The surface emissivity is estimated from active (SAR) measurements using Kirchhoff's law of thermal radiation [3], and is found to lie between 0.2 and 0.8 along the scan, consistent with published distant radiometry observations of Enceladus [4].

4. Subsurface thermal anomaly

Comparison between the E16 radiometry observations and the model outputs obtained for the same epoch, local hours, locations and observational geometry reveal that the measured brightness temperatures are much higher than expected when assuming no endogenic emission. Even for thermal inertias as high as $2000 \text{ Jm}^{-2}\text{K}^{-1}\text{s}^{-1/2}$ (the CIRS-derived value is <30 , [5]), the model predicts temperatures that are 5 to 25 K lower than the ones recorded (see Fig. 2). Even a locally much lower bolometric Bond albedo than assumed (0.8 based on [5]) could not explain such results, which strongly point to a geothermal anomaly in the subsurface.

A warmer near-surface could easily be masked to CIRS by a thermally insulating layer. Given the geological context, it is tempting to raise the possibility of an endogenic buried heat source. Though maximum at the center of the scan i.e. closer to the South pole, the discrepancy seems to be present everywhere, which would argue in favor of a laterally extensive buried heat source and provide crucial new constraints for the moon heating mechanisms. Furthermore, the thermal anomaly is especially strong over a linear fracture that looks like the "tiger stripes" and runs parallel to them. This could be a sulcus, sleeping at the surface but still vivid below. The anomaly is also strong over two

faults that bound the radar-brightest areas suggesting that these faults may also hide heat sources.

Alternatively, this thermal anomaly could be indicative of exotic thermal processes that are not taken into account in the model such as thermal rectification, where heat is also transferred through the pores by radiation (already observed in the very porous lunar regolith [6]) or, more likely, the solid-state greenhouse effect. This latter phenomenon, first advanced by [7], applies well to very bright surfaces, such as Enceladus', where the sunlight is not absorbed right at the surface but penetrates some distance into it, leading to subsurface energy deposition. However, while of importance in theory, large temperature enhancement has so far not been demonstrated in practice.

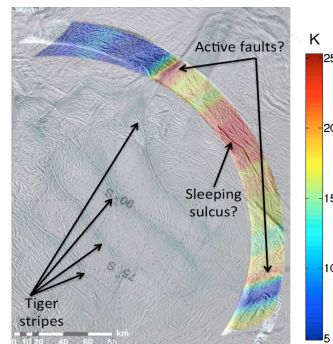


Figure 2: Map of the thermal anomaly (i.e. difference between the measured and modeled brightness temperatures).

Acknowledgements

The Cassini/Huygens mission is a joint endeavor of NASA, ESA, and ASI and is managed by JPL/Caltech under a contract with NASA.

References

- [1] West et al. (2012), 43rd LPSC, abstract #2602.
- [2] Porco et al. (2005), *Science* 311, 1393-1401.
- [3] Janssen et al. (2011), *Icarus* 212, 321-328.
- [4] Ostro et al. (2006), *Icarus* 183, 479-490.
- [5] Howett et al. (2010), *Icarus* 206, 573-593.
- [6] Langsteth et al. (1976), Proc. Lunar Sci. Conf. 7th.
- [7] Matson and Brown (1989), *Icarus* 77, 67-81.