



Elaboration, characterization of Cr-N based coatings

Brahim Tlili, Corinne Nouveau, Gildas Guillemot

► To cite this version:

Brahim Tlili, Corinne Nouveau, Gildas Guillemot. Elaboration, characterization of Cr-N based coatings. International conference on Advances in Materials and Processing Technologies (AMPT), Oct 2010, France. pp.1311-1316, 10.1063/1.3552365 . hal-00916127

HAL Id: hal-00916127

<https://hal.science/hal-00916127>

Submitted on 9 Dec 2013

HAL is a multi-disciplinary open access archive for the deposit and dissemination of scientific research documents, whether they are published or not. The documents may come from teaching and research institutions in France or abroad, or from public or private research centers.

L'archive ouverte pluridisciplinaire **HAL**, est destinée au dépôt et à la diffusion de documents scientifiques de niveau recherche, publiés ou non, émanant des établissements d'enseignement et de recherche français ou étrangers, des laboratoires publics ou privés.



Science Arts & Métiers (SAM)

is an open access repository that collects the work of Arts et Métiers ParisTech researchers and makes it freely available over the web where possible.

This is an author-deposited version published in: <http://sam.ensam.eu>
Handle ID: <http://hdl.handle.net/10985/7627>

To cite this version :

Brahim TLILI, Corinne NOUVEAU, Gildas GUILLEMOT - Elaboration, characterization of Cr-N based coatings - In: International conference on Advances in Materials and Processing Technologies (AMPT), France, 2010-10 - 2010

Any correspondence concerning this service should be sent to the repository

Administrator : archiveouverte@ensam.eu



Science Arts & Métiers (SAM)

is an open access repository that collects the work of Arts et Métiers ParisTech researchers and makes it freely available over the web where possible.

This is an author-deposited version published in: <http://sam.ensam.eu>
Handle ID: <http://hdl.handle.net/null>

To cite this version :

Brahim TLILI, Corinne NOUVEAU, Gildas GUILLEMOT - Elaboration, characterization of Cr-N based coatings - In: International conference on Advances in Materials and Processing Technologies (AMPT), France, 2010-10 - 2010

Any correspondence concerning this service should be sent to the repository
Administrator : archiveouverte@ensam.eu

Elaboration, characterization of CrN- based coatings

B. Tlili^{a,b}, C. Nouveau^b, G. Guillemot^c

^a *UR. Mécanique Appliquée, Ingénierie et Industrialisation (M.A.2I), ENIT, BP 37, Le Belvédère, 1002 Tunis, Tunisie*

^b *Laboratoire Bourguignon des Matériaux et Procédés (LaBoMaP), Centre Arts et Métiers ParisTech de Cluny, Rue Porte de Paris, F-71250 Cluny, France*

^c *LMPGM, UMR-CNRS 8517, CER Arts et Métiers ParisTech, 8, Boulevard Louis XIV 59046 Lille, France*

Abstract. Cr, CrN and CrAlN monolayers were synthesized by RF dual magnetron sputtering on AISI4140 steel and silicon substrates at 200°C. Multilayers coatings based on the three mono-layers such as CrN/CrAlN and Cr/CrN/CrAlN were also synthesized only on Si. The physico-chemical and mechanical properties of the layers were determined by AFM, SEM+WDS, stress, roughness and nanoindentation measurements. The influence of the thickness on the mechanical properties of the monolayers stresses has been studied and as a consequence we compared the mono and multilayers stress state.

Keywords: Cr-N system, multilayers, thickness, residual stress.

INTRODUCTION

A variety of multilayer systems such as TiN/CrN [1], TiAlN/CrN [2], TiN/TiAlN [3], etc., have been studied extensively. However, there are very few reports on the multilayer coatings based on CrN and CrAlN [4]. The addition of Al to CrN system permits to work at higher temperatures where the oxidation occurs [5]. CrAlN coatings have been reported to be stable up to a temperature of 900°C depending upon the Al content in the coatings [6]. CrAlN coatings also exhibit higher hardness and a lower friction coefficient compared to CrN coatings [7]. The new ternary film structure brought about significant advances in coating designs, such as the decrease of the grain size and the formation of grain boundaries between the two phases. As a consequence, it is reported that CrAlN films exhibited excellent mechanical properties and oxidation resistance owing to their solid solution structure [8]. Furthermore, it is well known that most properties of these solid solution composite films are influenced by certain factors such as crystalline structure and micro-structure. These factors led to the study of the multilayers coatings of CrN/CrAlN and Cr/CrN/CrAlN, in which the properties of Cr, CrN and CrAlN can be combined. The Cr underlayer is considered as a bonding layer.

In this work, we have investigated the effect of thickness on residual stress and hardness of the monolayers. Moreover, the relationship between mechanical properties and the stress state of the multilayers coatings was also discussed and established.

EXPERIMENTAL PROCESS

Deposition

The layers were deposited on mechanical polished steel (AISI 4140) and silicon (100) substrates using an RF dual magnetron sputtering system (NORDIKO type 3500-13, 56 MHz) equipped with two targets of high purity (Cr of 99.995 % and Al of 99.999 %) (Fig.1).

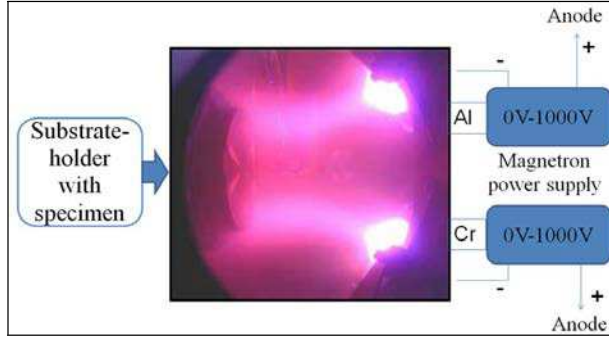


FIGURE 1. Plasmas operated in the magnetron chamber

Before deposition, the substrates and the targets were etched in pure argon plasma for 10 min. In order to obtain uniform coatings, the substrate was positioned 80mm away from the target. Very high purity nitrogen was introduced into the vacuum chamber as the reactive gas. The residual pressure was 10^{-7} mbar. The deposition conditions such as the target bias voltage, the deposition time and the gas mixture are given in Table 1.

Table 1. Deposition conditions (The target power and the gas pressure are fixed to 4kW and 4μbar respectively)

Coatings	Target bias voltage (-V)		Deposition time (min)	Gas mixture	
	Al	Cr		Ar (%)	N ₂ (%)
Cr	0	-900	3, 5, 7, 8.5, 10, 30, 60	100	0
CrN	0	-900	7, 10, 12.5, 15, 20, 30, 60	80	20
CrAlN	-300	-900	7, 10, 15, 20, 25, 30, 35, 60	//	//
Cr/CrN/CrAlN	-300	-900	99	//	//
(P _t /P _c /P _i):PVD ₁	//	//	28	//	//
CrN/CrAlN					
(P _t /P _c):PVD ₂	//	//	25.5	//	//
Cr/CrN/CrAlN					
(P _t /P _c /P _i):PVD ₃	//	//	105.5	//	//
CrN/CrAlN					
(P _t /P _i):PVD ₄	//	//	22.5	//	//
CrN/CrAlN					
(P _t /P _c):PVD ₅	//	//	29.5	//	//
Cr/CrN/CrAlN					
(P _t /P _c /P _i):PVD ₆	//	//		//	//

Where P_c is the highest residual stress where the layers show a peak on the curve “stress vs thickness” and P_i is the lower and stable residual stresses of the films. In the following text, the films will be called PVD_i (with i=1, 2, 3, 4, 5 and 6) as mentioned in Table 1.

Experimental

The atomic percentages of N, Cr and Al were determined by Wavelength Dispersive Spectrometry (WDS) microanalysis with a Jeol JSM-5600 Lv Scanning Electron Microscope (SEM). The surface roughness and thickness of the layers were observed and determined by Atomic Force Microscopy (AFM alpha300 A) and a 3D optical profilometer (NT-1100 Veeco Instruments Inc.) respectively. The hardness and the Young's modulus of the layers were determined by nanoindentation (MTS Systems Corporation, XP®) using a Berkovich diamond tip and continuous stiffness option, with a maximum indentation depth of 2000 nm. A theoretical model developed by A. Iost *et al.* [9] was applied to determine the hardness of the coatings. The residual stresses (σ) were determined by interferometry (method of the Newton's rings) and calculated thanks to the Stoney's equation [10].

RESULTS AND DISCUSSIONS

Coatings thickness, composition and roughness

The Cr, CrN and CrAlN coatings were deposited with different thicknesses in order to determine the influence of the thickness on the residual stress. Taking into account the optimal conditions obtained on monolayer, we developed multilayer coatings of Cr/CrN/CrN and CrAlN/CrAlN. The relative composition, thickness, morphology of the films determined by EDS, WDS and 3D optical profilometer was resumed in Table 2.

Table 2. The composition of films in atomic proportion

Coating	N Content (at. %)	Al Content (at. %)	Cr Content (at. %)	N/Cr ratio	Total thickness (nm)	Roughness (μm)	
						Arithmetic roughness (R_a)	Roughness average quadratic (R_q)
Cr	0	0	100	0	47, 90,	0.1	0.12
					110, 132,	-	-
					150, 412, 860	0.15	0.14
CrN	48	0	51	0.95	58, 75,	0.1	0.12
					106, 127,	-	-
					170, 360, 690	0.14	0.16
CrAlN	48.2	4	48	1.04	117, 150,	0.1	0.12
					250, 285,	-	-
					416, 550, 582, 980	0.12	0.13
PVD ₁	51.8	4.2	42.9	1,2	1500	0.1	0.14
PVD ₂	50.8	4	43.1	1.17	300	0.12	0.16
PVD ₃	50.5	4.7	42.5	1.18	300	0.11	0.15
PVD ₄	52	5	41.3	1.2	1500	0.13	0.15
PVD ₅	49.7	4.9	43.6	1.18	256	0.12	0.16
PVD ₆	50.1	4.2	44.5	1.17	356	0.09	0.13

The N/Cr ratio varied from 0.95 to 1.2 for all the coatings, which reflects their stoichiometry. Furthermore, the R_a and R_q roughness of the films are low, and their variations do not exceed 4/100 on all surfaces. On the other hand the evolution of the thickness versus the deposition time is always linear.

Coating hardness, Young's modulus and residual stress

We were interested to verify the influence of the layers thickness on their hardness, Young's modulus and residual stress. Fig.2 shows that the evolution of the hardness and Young's modulus is closely related to internal stresses of the layers whatever the layer is. The residual stresses peak close to the interface between the substrate and the monolayers confirm the results obtained by Nouveau *et al.* [11] and Hanabusa *et al.* [12] and can be explained by a growth model defined in [11]. The evolution of the Young's modulus is similar with the hardness one versus the layers thickness.

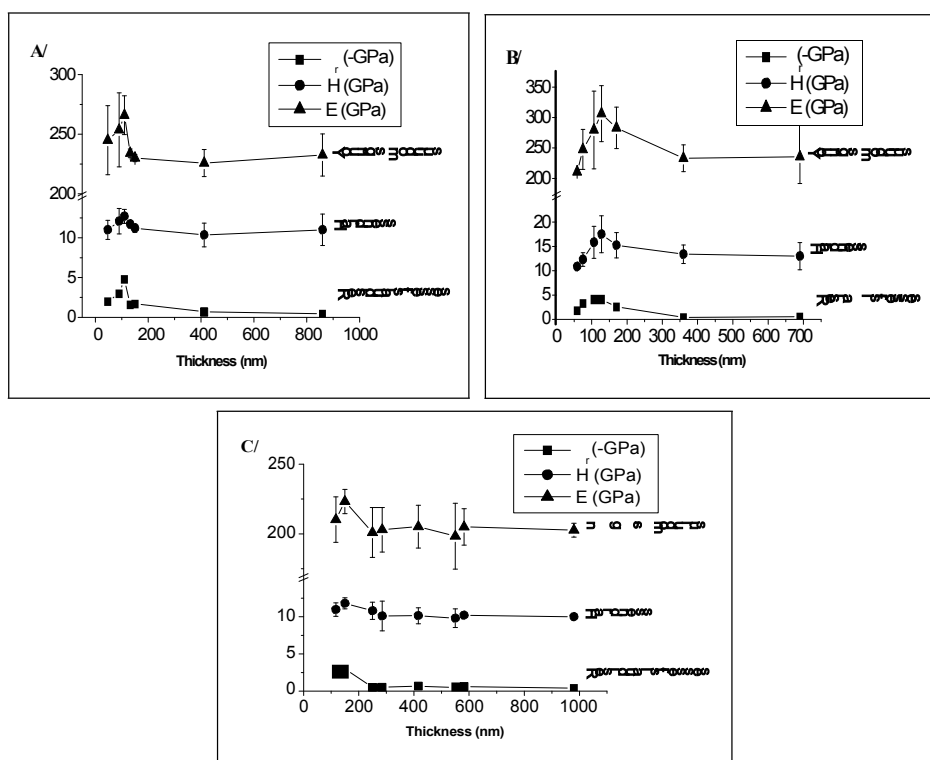


FIGURE 2. Evolution of the hardness, Young's modulus and residual stresses as a function of the A/ Cr, B/ CrN and C/ CrAlN film thickness

All monolayers coatings showed significantly higher hardness as compared to substrate AISI4140 (4.2 GPa). The maximum hardness for Cr, CrN and CrAlN was measured and was 12, 18 and 12.5 GPa respectively. The greatly enhanced mechanical properties of thin films can be explained by solid mixed hardening, complex chemical bonding strengthening, and the novel nanocomposites microstructure that enhances the material strength by a dislocation blocking effect. An explanation of the high hardness of the thin films near the interface with

substrate was the local bond strengthening and dislocation motion limited by lattice distortion during germination and growth. According to the amorphous/crystalline nanocomposite design concept, the high hardness of the composite film near the interface was based on the combination of the lack of the dislocation activity in the small nanocrystals and the jamming of grain boundary sliding by the formation of a strong interface between the two phases. The films investigated here had crystallite sizes and amorphous layer thickness similar to the super hard nanocomposites, which were sufficient for formation of nanosized dislocations. At the beginning of the deposition, many nuclei of tiny islands are formed on the substrate surface (Fig. 3a). Since these nuclei are tiny, the stress is considered to be significantly small. As depositing time increases, these tiny nuclei coalesce with each other to form islands (Fig. 3b) and finally change into a solid film on the substrate. After this film formation, compressive stresses developed during the cooling stage will force the atoms through the grain boundaries as well as the film surface. These atomic migrations form hillocks at the grain boundaries on a film surface, bringing stress relaxation in films thicker than 150, 128 and 110 nm for CrAlN, CrN and Cr, respectively. Moreover, this explanation seems useful for hardness; because smaller the grains size is, higher the hardness is. This explains the proportionality between the residual stresses and hardness.

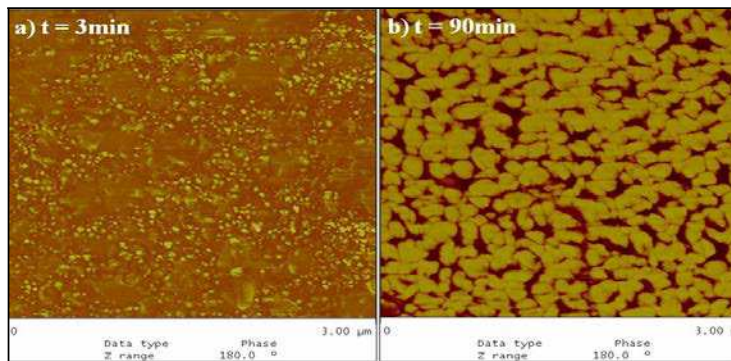


FIGURE 3. SEM images of a CrAlN layer
(a) 50 nm and (b) 1.8 μm thick.

Moreover, Fig. 4 shows that residual stresses in multilayers are lower than the monolayers ones. The reduction of the residual stresses in multilayer coatings compared to those of the monolayers is also mainly due to their interface. The interlayers seem to be effective in absorbing residual stresses during film growth. It's obvious that their values strongly depend on the residual stresses of the monolayers. Indeed, the total stress is increase 3.4 times when we compare PVD₁ (all the monolayers are at P_t) with PVD₆ (all the monolayers are at P_c). The highest stress is obtained for the PVD₆ multilayer, where the monolayers presented their stress peak, which reflects this proportionality. Besides, the same results is obtained when we compare PVD₄ and PVD₅, the stress is also increased 3.5 times. Actually, if we compare the PVD₁ and PVD₄ or PVD₅ and PVD₆ multilayers, it's obvious that the underlayer of Cr has a main effect because the Cr bonding or transition layer played a main role on the stress intensity, which proves that the stress level on the coating PVD₆ (-1.2 GPa) is higher than that in the PVD₅ (-0.7 GPa) one for example. We can also note if we compare PVD₂ and PVD₅ that the stress remains almost the same whatever the CrN stress state (~0.65-0.7 GPa). A similar result is obtained when we compare the PVD₃ and PVD₆ multilayers stress with a Cr underlayer (~1.1-1.2 GPa). These results mean that the Cr or CrN underlayers improve the stress of those multilayers only if they are at their P_t point like the sublayers. Otherwise, if the

underlayers are at their P_t point and the sublayers at their P_c point, then the increase of the stress is due to the fact that these layers present their highest stress (ex. PVD₄ compared to PVD₂ or PVD₁ compared to PVD₃). Finally, these results would help in the choice of multilayers according to their future applications (mechanical, thermal, wear etc...).

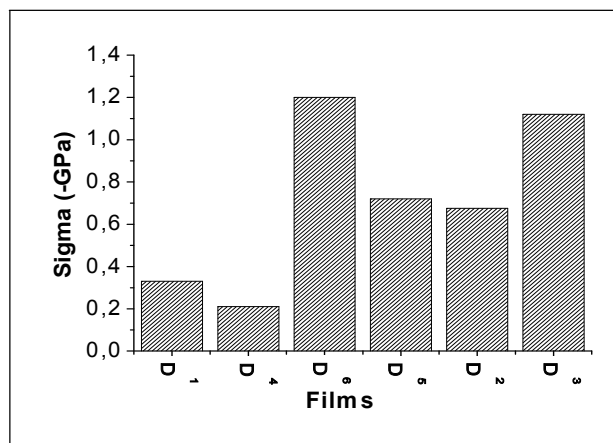


FIGURE 4. Residual stress of multilayer coatings

CONCLUSIONS

According to the previous results, we can conclude as follows:

- (1) The CrAlN, CrN and Cr monolayers presented a residual stress peak that can be related to germination, growth and morphology of the film near the interface film / substrate.
- (2) The hardness and Young's modulus of the monolayers depend on their residual stresses
- (3) The residual stresses of multilayer coatings are always lower than the monolayers ones.

This decrease is related to the interface between layers, and the variation of the thickness. Besides, the final residual stresses of the multilayers depend on the stress state of the monolayers from whom they are built with. For example, if you want a stressed so a hard coating, you should select one with a Cr underlayer (whatever its stress state) and a sublayer at its P_c stress point. For a lower final stress, we would select no Cr underlayer or all the monolayers at their P_t stress point.

REFERENCES

- [1] H.A. Jehn, M.E. Baumgartner, *Surf. Coat. Technol.* 108, 54-55 (1992)
- [2] M. Panjan, S. Šturm, P. Panjan, M. Čekada, *Surf. Coat. Technol.* 202, 815-819 (2007)
- [3] L.A. Dobrzański, M. Polok, M. Adamiak, *Journal of Materials Processing Technology* 164-165, 843-849 (2005)
- [4] Youn J. Kim, Tae J. Byun, Jeon G.Hon, *Superlattices and Microstructures* 45, 73-79 (2009)
- [5] P.H. Mayrhofer, H. Willmann, C. Mitterer, *Surf. Coat. Technol.* 222, 146-147 (2001)
- [6] M. Kawate, A.K. Hashimoto, T. Suzuki, *Surf. Coat. Technol.* 165, 163 (2003).
- [7] Y. C. Chim and al., *Thin Solid films* 517, 4845- 4849 (2009)
- [8] M. Uchida, N. Nihira, A. Mitsuo, K. Toyoda, K. Kubota, T. Aizawa, *Surf. Coat. Technol.* 627, 177-178 (2004).
- [9] K. Rahmoun, A. Iost, V. Keryvin, G. Guillemot, N.E. Chabane Sari, *Thin Solid Films* 518, 213-221 (2009)
- [10] Y. Lifshitz, *Diam. Relat. Mater.* 5, 388 (1996)
- [11] S.K. Pradhan, C. Nouveau, A. Vasin, M.-A. Djouadi, *Surf. Coat. Technol.* 200, 141-145 (2005)
- [12] Takao Hanabusa, Kazuya Kusaka, Osami Sakata, *Thin Solid Films* 459, 245-248 (2004)