



Influence of crystal mosaicity on axial channeling effects and lattice site determination of impurities

B. de Vries, U. Wahl, Sandra Ruffenach, Olivier Briot, A. Vantomme

► To cite this version:

B. de Vries, U. Wahl, Sandra Ruffenach, Olivier Briot, A. Vantomme. Influence of crystal mosaicity on axial channeling effects and lattice site determination of impurities. *Applied Physics Letters*, 2013, 103 (17), pp.172108. 10.1063/1.4826705 . hal-00914581

HAL Id: hal-00914581

<https://hal.science/hal-00914581>

Submitted on 4 Jun 2021

HAL is a multi-disciplinary open access archive for the deposit and dissemination of scientific research documents, whether they are published or not. The documents may come from teaching and research institutions in France or abroad, or from public or private research centers.

L'archive ouverte pluridisciplinaire **HAL**, est destinée au dépôt et à la diffusion de documents scientifiques de niveau recherche, publiés ou non, émanant des établissements d'enseignement et de recherche français ou étrangers, des laboratoires publics ou privés.

Influence of crystal mosaicity on axial channeling effects and lattice site determination of impurities

B. De Vries,¹ U. Wahl,² S. Ruffenach,³ O. Briot,³ and A. Vantomme^{1, a)}

¹⁾*Instituut voor Kern- en Stralingsfysica, KU Leuven, 3001 Leuven, Belgium*

²⁾*Campus Tecnológico e Nuclear, Instituto Superior Técnico, Universidade de Lisboa, 2686-953 Sacavém, Portugal*

³⁾*GES, Université de Montpellier II, 34095 Montpellier, France*

(Dated: 23 July 2013)

Using the electron emission channeling and Rutherford backscattering/channeling techniques, the influence of the mosaicity of a thin film on the axial channeling of charged particles was investigated. It is found that crystal mosaicity leads to a broadening and a degradation of the experimental channeling effects. This phenomenon, which is shown to be of major importance when assessing the lattice site of impurities in a single crystal, can be modeled quantitatively by using the mosaic *tilt* and *twist* components derived from X-ray rocking curve scans. As a case study, we illustrate that our approach allows to accurately determine the lattice site of Er in AlN, despite the significant influence of mosaicity on the channeling measurements.

The channeling of charged particles is widely used to investigate single-crystalline materials. In combination with ion beam techniques such as Rutherford backscattering spectrometry (RBS), particle-induced X-ray emission (PIXE) or nuclear reaction analysis (NRA), ion channeling is a powerful tool to examine the crystal quality of such materials, or to obtain direct information on the lattice sites occupied by impurities. One particularly sensitive lattice location technique is emission channeling (EC), which is based on the channeling of charged particles emitted in the decay of radioactive impurities.¹

Most theoretical treatments of channeling ignore crystal imperfections or only treat point defects, e.g., by the addition of a scattering contribution to the theoretical model for a perfect crystal, which accounts for the collisions of channeled particles with point defects inside the channels.^{1,2} The influence of extended defects is, however, far less studied. One specific example of such long-range crystal disorder is crystal mosaicity, e.g., in a (hetero-) epitaxial thin film which consists of single-crystalline domains that are separated by narrow regions with high dislocation densities. Consequently, the domains are slightly misoriented with respect to each other and to the substrate. The misorientation of a crystal-lite can be described by a tilt (out-of-plane rotation) and twist (in-plane rotation) component (Fig. 1). So far, ion channeling studies of mosaic layers - both theoretical and experimental - have been limited to the investigation of the channeling effect along the surface normal direction.³⁻⁹ However, as will be shown below, the surface normal channeling effect is only influenced by the mosaic tilt component. In this work, we will extend the existing model to non-perpendicular channeling directions, which will also probe the twist component. This model will subsequently be used to explain anomalous EC and Rutherford backscattering/channeling (RBS/C) results in thin AlN layers.

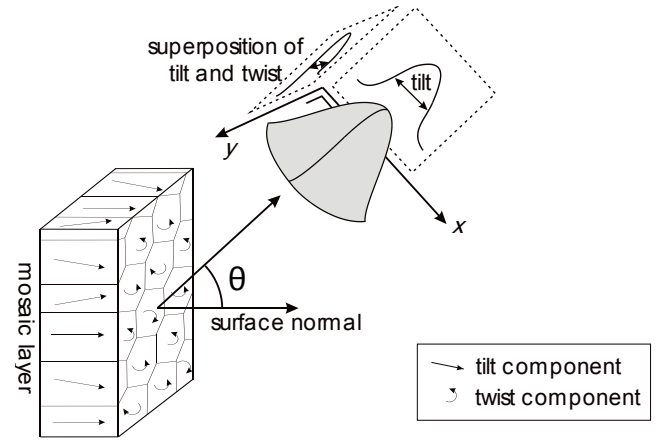


FIG. 1. Schematic of the macroscopic distribution of a crystallographic axis due to the microscopic mosaic spread.

For a certain channeling axis, the microscopic spread in orientation gives rise to a macroscopic distribution function for that axis, as schematically shown in Fig. 1 for a crystallographic direction that is inclined by an angle θ with respect to the surface normal, with the two-dimensional distribution function shown in grey. We define the x -axis to be perpendicular to the channeling axis and pointing towards the surface normal, while the y -axis is perpendicular to both the channeling axis and the x -axis. The width of the projection on the x -axis will only depend on the spread in mosaic tilt W_{tilt} , irrespective of the inclination angle θ . On the other hand, the width of the y -axis projection will be determined by a superposition of tilt W_{tilt} and twist W_{twist} , which varies as a function of θ . An empirical model that describes this superposition has been developed by Srikant *et al.*¹⁰ This spread in orientation will evidently have repercussions on channeling experiments: theoretically, if the mosaic domains are large enough so that most particles will channel within one single-crystalline domain, the resulting channeling effect simply consists of the convolution

^{a)} Andre.Vantomme@fys.kuleuven.be

of the channeling effect for a perfect crystal with the distribution function of the channeling axis. This will result in a broadening of the experimental channeling patterns and a degradation of the channeling yields compared to those for a perfect crystal. However, this effect will only be visible experimentally if the mosaic spread is of the same order of magnitude or larger than the experimental angular resolution. If so, it is essential to take the mosaicity into account during the analysis of the experimental data in order to correctly interpret the results. If not, the analysis might lead to erroneous and unphysical conclusions concerning the lattice sites of impurities or the crystalline quality of the mosaic grains. In this study, we will demonstrate this for the specific case of the lattice site determination of Er in AlN.

The sample consists of an AlN layer grown by metalorganic chemical vapor deposition (MOCVD) onto a sapphire substrate, with a buffer layer of AlGaIn in between. The layer composition and thickness were analyzed by means of RBS (not shown) using a $^4\text{He}^+$ beam with random incidence. In order to resolve the energy signals of ^4He particles backscattered from Al and Ga, a beam energy of 3.5 MeV and a detection angle of 168° were used. In addition, complete angular scans were performed for the [0001], $[\bar{2}113]$ and $[\bar{1}101]$ directions, giving additional information on the crystalline quality.

In order to assess the tilt distribution in the AlN film, we measured the high-resolution X-ray rocking curves (ω -scan) of the (0002) and (0004) reflections using a Cu source and a monochromator with four Ge(002) crystals such that only the $K_{\alpha 1}$ radiation is selected. The reflected X-rays pass through 1 mm and 0.6 mm slits before being detected by a scintillation detector. The instrumental resolution was 0.005° full-width at half maximum (FWHM). In order to determine the twist, a series of skew-symmetric rocking curve reflections was performed.

Electron emission channeling is based on the fact that electrons emitted during the decay of radioactive isotopes are guided by the potential of rows and planes of atoms while traveling through a crystalline solid.¹ By measuring the angle-dependent emission yields with a position-sensitive detector and fitting them to theoretically calculated patterns, a precise determination of the lattice site(s) occupied by the emitting isotopes is possible.¹¹ In this work we have used the radioactive probe isotope ^{167}Tm ($t_{1/2} = 9.25$ d), which was introduced in the AlN sample by 30 keV ion implantation at the ISOLDE facility of CERN to a fluence of $1.9 \times 10^{13} \text{ cm}^{-2}$. The ^{167}Tm isotope decays into the isomeric excited state $^{167\text{m}}\text{Er}$ ($t_{1/2} = 2.27$ s). In the subsequent decay to the ground state, conversion electrons are emitted, which were used as channeling particles. The electron channeling patterns were measured in the as-implanted state, after 10 min isochronal annealing steps at 600 and 900°C, and after tube furnace annealing for 10 min at 1050°C in N_2 under atmospheric pressure. More information on emission channeling experiments with the probe $^{167\text{m}}\text{Er}$ in GaN and Si can be found in references.^{12–14}

TABLE I. RBS/C half-angles and minimum yields of angular scans of 3.5 MeV ^4He particles backscattered from Al in the AlN film: experimentally determined half angles $\psi_{1/2}$, theoretically calculated Barrett half angles $\psi_{1/2}^{\text{B}}$, corrected half angles $\psi_{1/2}^{\text{mos}}$ including the broadening due to crystal mosaicity, experimental minimum yields χ_{min} , and theoretically calculated Barrett minimum yields $\chi_{\text{min}}^{\text{B}}$.

axis	θ	$\psi_{1/2}$	$\psi_{1/2}^{\text{B}}$	$\psi_{1/2}^{\text{mos}}$	χ_{min} [%]	$\chi_{\text{min}}^{\text{B}}$ [%]
[0001]	0°	$0.48^\circ \pm 0.05^\circ$	0.42°	0.44°	5.5 ± 0.5	1.6
$[\bar{2}113]$	31.6°	$0.54^\circ \pm 0.15^\circ$	0.31°	0.51°	36 ± 2	3.4
$[\bar{1}101]$	46.8°	$0.80^\circ \pm 0.30^\circ$	0.27°	0.61°	68 ± 2	4.3

From the random RBS spectrum, a thickness for the top AlN layer of 3500 Å was deduced, while the buffer layer consists of $\text{Al}_{0.2}\text{Ga}_{0.8}\text{N}$ with a thickness of 5500 Å. Table I lists the experimentally determined half-angles $\psi_{1/2}$ and minimum yields χ_{min} for channeling along three different crystal axes in AlN. The theoretically expected half-angles $\psi_{1/2}^{\text{B}}$ and minimum yields $\chi_{\text{min}}^{\text{B}}$ calculated according to the Barrett formalism¹⁵ are also shown. While the half-angle and minimum yield of the [0001] surface direction are quite close to the theoretically expected values, the deviation between theory and experiment becomes progressively larger with increasing angle θ . Especially the fact that the experimental half-angles increase with increasing inclination angle, while the theoretical half-angles decrease, and that the experimental minimum yields are considerably larger than the theoretical ones, are already a strong indication that the AlN layer does not possess a perfect single-crystalline structure but is subject to mosaic spread.

From the rocking curve (ω -scan) of the AlN (0002) reflection, a FWHM of $0.25 \pm 0.01^\circ$ was found (not shown). This width is the result of a combination of the spread in mosaic tilt, the lateral coherence of the X-rays and the instrumental resolution. Since the latter is of the order of 0.005° it can be neglected. Considering that the incoherence broadening decreases with increasing reflection order, its magnitude can be determined by comparing the widths of the (0002) and (0004) rocking curve scans. Since a FWHM of $0.24 \pm 0.01^\circ$ was measured for the (0004) reflection, the incoherent broadening must be smaller than 0.02° . Therefore, it can also be neglected, and the broadening observed in the rocking curve scan can be attributed solely to mosaic tilt.

The in-plane twist component, on the other hand, is less straightforward to determine. In principle, it can be measured directly by a rocking curve scan, but only in the geometry with grazing incident and exit beams.¹⁶ A more desirable approach is to determine the twist by the extrapolation of the FWHM of a series of skew-symmetric rocking curve reflections,¹⁰ since this allows a direct measurement of the superposition of tilt and twist as a function of inclination angle θ . It is exactly this superposi-

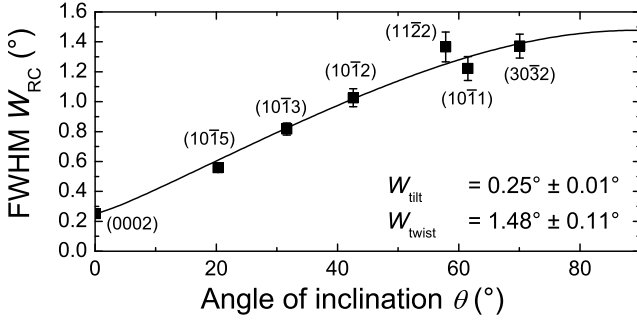


FIG. 2. FWHM W_{RC} of $(hkil)$ rocking curves as a function of inclination angle with respect to the surface normal. The solid line is a fit with the model of Srikant *et al.*¹⁰

tion that will be needed to determine the broadening of channeling effects in the y direction (see Fig. 1). Figure 2 shows the FWHM of six skew-symmetric rocking curves as a function of inclination angle. Fitting the data points with the model of Srikant *et al.*¹⁰ (solid line) shows that the twist component ($1.48 \pm 0.11^\circ$) is much larger than the tilt, which qualitatively agrees with previous studies.^{10,17} It is also considerably larger than the typical resolution of an emission channeling (EC) experiment, which is $\sim 0.24^\circ$. Therefore, the influence of the mosaicity in this sample should be detectable by the EC technique.

Figures 3 (a)-(d) show the normalized angular emission yields of ^{167m}Er conversion electrons around the $[0001]$, $[\bar{1}102]$, $[\bar{2}113]$, and $[\bar{1}101]$ axes after the 900°C annealing step. The inclination angles of these axes with respect to the surface normal are 0.0° , 28.0° , 31.6° , and 46.8° , respectively. The central axial channeling effects and the intersecting planes show that a substantial fraction of Er atoms are located on substitutional lattice sites. In order to determine the sublattice preference of Er in AlN, the experimental patterns were fitted to theoretical emission yields, which were calculated by means of the “many-beam” approach,¹ assuming a *perfect* crystal lattice. The best fits to the theoretical patterns were obtained for Er on Al sites [Figs 3 (e)-(h)] with the remaining Er atoms occupying random sites. A visual inspection of the patterns already shows that the agreement is rather poor, especially for the axes with a large inclination: The experimental $[\bar{1}101]$ pattern [Fig. 3 (d)] is by far broader than the simulated best fit for a perfect crystal [Fig. 3 (h)]. Figure 4 (a) shows the Er_{Al} fractions deduced from this fitting procedure as a function of annealing temperature. A comparison of the results of the four measured axes indicates that the fractions apparently decrease with increasing inclination angle θ . This unphysical effect, however, is an artefact of the progressively worse agreement between theory and experiment.

In order to investigate if this behavior is due to mosaicity, the fitting procedure was repeated with another set of theoretical emission yields that include the mosaic broadening. This was achieved taking the convolution of the simulations for a perfect crystal with the appropriate

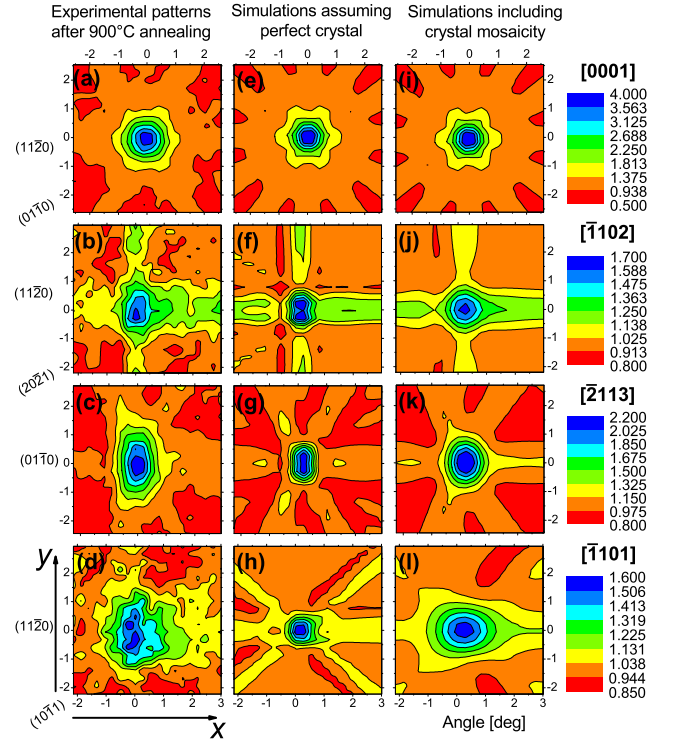


FIG. 3. (Color online). (a)-(d) Experimental conversion electron emission channeling patterns for ^{167m}Er in AlN following $T_A=900^\circ\text{C}$. (e)-(h) Best fits of theoretical emission yields assuming a perfect AlN crystal structure corresponding to, respectively, 61%, 28%, 29% and 17% of Er on Al sites. (i)-(l) Best fits of theoretical patterns including the broadening due to AlN mosaicity, leading to Er_{Al} fractions of 69%, 60%, 64% and 63%.

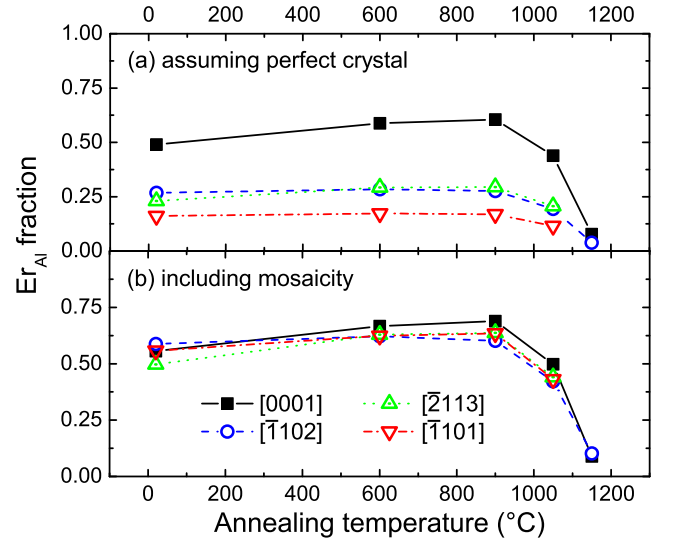


FIG. 4. (Color online). Fractions of Er_{Al} deduced from a fit to (a) theoretical emission yields assuming a perfect crystal and (b) theoretical simulations including the broadening due to mosaicity.

distribution functions, according to Fig. 1. The widths of the distributions were taken from the values of the fitted curve in Fig. 2 for the corresponding inclination angles. The best fits of these corrected simulations to the experimental patterns are shown in Figs 3 (i)-(l). It is obvious that these simulations display a significantly better agreement to the experiments than the ones that assume a perfect crystal. Furthermore, as can be seen in Fig. 4 (b), the experimental substitutional fractions along the four crystal axes are now equal within the experimental error bars of about 10%. This demonstrates that the broadening of the experimental emission channeling effects can be explained quantitatively by the mosaicity of the layer, as determined with XRD.

Note that in a similar experiment with $^{167\text{m}}\text{Er}$ implanted into a GaN film,^{13,14} an almost perfect agreement was found between the experiment and the theoretical simulations assuming a perfect crystal. However, for that particular sample the tilt (0.08°) and twist (0.19°) values were smaller than the angular resolution (0.24°) of the emission channeling technique. Consequently, the measured mosaic broadening was too small to play a major role, which explains the good correspondence between theory and experiment for GaN. Moreover, our approach allows the extraction of physical information on the lattice site location of Er in the highly mosaic AlN layer. The data in Fig. 4 (b) show that already after room-temperature implantation the majority ($\sim 55\text{-}60\%$) of the Er atoms are located on Al sites (S_{Al}), with the remainder situated on random sites. Including a third fraction in the fitting procedure does not considerably improve the fit quality, although it cannot be excluded that less than 5% of the Er atoms are located on other high-symmetry sites. The largest Er_{Al} fraction of about 65% is obtained after vacuum annealing up to 900°C . However, this fraction decreases after annealing at 1050°C in N_2 and almost disappears after an additional annealing step at 1150°C in N_2 , which is unexpected, considering that AlN is very resistant to high temperatures.¹⁸ Ronning *et al.*¹⁹ and Lorenz *et al.*²⁰ have observed a similar decrease in substitutional fraction for this temperature range in perturbed angular correlation (PAC) experiments on In-implanted AlN, which was attributed to the oxidation of the surface layer.

With the emission channeling technique one can in principle also deduce the root mean square (*rms*) displacements of Er atoms from the ideal Al lattice sites. However, the large mosaic broadening leads to a loss of information in the experimental emission patterns of the AlN samples. As a result, it was not possible to deduce accurate *rms* displacements from this channeling experiment.

Our observations on the lattice site location of $^{167\text{m}}\text{Er}$ qualitatively agree with the results of previous emission channeling experiments on rare earths in AlN reported by Vetter *et al.*,^{21,22} where 69-78% of ^{169}Tm and $\sim 57\%$ of ^{147}Nd were found on S_{Al} sites. The AlN layer used in the ^{169}Tm experiment was grown on a 6H-SiC substrate

while the one for ^{147}Nd was deposited on sapphire, as in our case. Since AlN has a much smaller lattice mismatch with 6H-SiC than with sapphire, the crystal quality (including mosaicity) of layers grown on SiC is better than those grown on sapphire substrates. This assumption is supported by the fact that the angular emission spectra from ^{169}Tm shown in Ref. 21 do not seem to be broadened by mosaic spread. On the other hand, for their analysis of the ^{147}Nd experiment Vetter *et al.* noticed a broadening effect due to the sample mosaicity and took this into account by convoluting the patterns with a ‘resolution function’, however, without working out the procedure in detail.²²

Similar to the emission channeling data presented above, the crystal mosaicity can be taken into account in the RBS/C data by a convolution of the theoretical half angle for a perfect crystal $\psi_{1/2}^{\text{B}}$ with the angular mosaic spread at the inclination angle θ of the channeling axis (as determined above). The corrected critical angles $\psi_{1/2}^{\text{mos}}$ are listed in the last column of table I. These values increase with increasing inclination angle θ , like the experimental data, indicating that crystal mosaicity is indeed the driving force behind the broadening of the experimental RBS/C effects.

In conclusion, we have shown that the mosaicity of a hetero-epitaxial film can lead to a broadening and a degradation of experimental emission channeling and RBS/channeling effects. We were able to *quantitatively* model this phenomenon using the results of X-ray rocking curve scans. This approach allowed to accurately determine the lattice site of Er in AlN, despite the large influence of mosaicity on the channeling measurements. This model is, however, not limited to this specific example: in general, it predicts that any channeling measurements on a sample with a sufficiently large mosaicity will be influenced by this effect, regardless of the specific sample composition or channeling technique that is used. This can lead to erroneous determinations of the lattice site location, if this effect is not taken into account.

ACKNOWLEDGMENTS

This work was funded by the FWO, Vlaanderen, the Portuguese Foundation for Science and Technology (CERN/FP/123585/2011), the KU Leuven (GOA/09/006 and GOA/14/007) and the European Commission through the SPIRIT (Support of Public and Industrial Research using Ion beam Technology, Contract 227012) and ENSAR (European Nuclear Science and Applications Research, Contract 262010) projects.

¹H. Hofsaess and G. Lindner, Phys. Rep.-Rev. Sec. Phys. Lett. **201**, 121 (1991).

²A. Dygo, J. Kaczanowski, A. Tuross, W. Wesch, K. Gartner, and G. Gotz, Nucl. Instrum. Methods Phys. Res. Sect. B-Beam Interact. Mater. Atoms **64**, 721 (1992).

³D. Sigurd, R. W. Bower, W. F. Vanderwe, and J. W. Mayer, Thin Solid Films **19**, 319 (1973).

- ⁴H. Ishiwaru, K. Hikosaka, and S. Furukawa, J. Appl. Phys. **50**, 5302 (1979).
- ⁵P. K. Bhattacharya, J. Appl. Phys. **52**, 2804 (1981).
- ⁶R. Samlenski, G. Flemig, R. Brenn, C. Wild, W. Mullerseberr, and P. Koidl, J. Appl. Phys. **74**, 2134 (1993).
- ⁷K. Takahiro, S. Nagata, and S. Yamaguchi, Appl. Phys. Lett. **69**, 2828 (1996).
- ⁸R. Moons, S. Blasser, J. Dekoster, A. Vantomme, J. De Wachter, and G. Langouche, Thin Solid Films **324**, 129 (1998).
- ⁹E. V. Monakhov, M. F. Fyhn, and A. N. Larsen, Nucl. Instrum. Methods Phys. Res. Sect. B-Beam Interact. Mater. Atoms **164**, 103 (2000).
- ¹⁰V. Srikant, J. S. Speck, and D. R. Clarke, J. Appl. Phys. **82**, 4286 (1997).
- ¹¹U. Wahl, J. G. Correia, A. Czermak, S. G. Jahn, P. Jalocha, J. G. Marques, A. Rudge, F. Schopper, J. C. Soares, A. Vantomme, P. Weilhammer, and I. collaboration, Nucl. Instrum. Methods Phys. Res. Sect. A-Accel. Spectrom. Dect. Assoc. Equip. **524**, 245 (2004).
- ¹²U. Wahl, A. Vantomme, J. De Wachter, R. Moons, G. Langouche, J. G. Marques, and J. G. Correia, Phys. Rev. Lett. **79**, 2069 (1997).
- ¹³B. De Vries, V. Matias, A. Vantomme, U. Wahl, E. M. C. Rita, E. Alves, A. M. L. Lopes, and J. G. Correia, Appl. Phys. Lett. **84**, 4304 (2004).
- ¹⁴A. Vantomme, B. De Vries, and U. Wahl, Top. Appl. Phys. Topics in Applied Physics, **124**, 55 (2010).
- ¹⁵J. H. Barrett, Phys. Rev. B **3**, 1527 (1971).
- ¹⁶T. A. Lafford, P. A. Ryan, D. E. Joyce, M. S. Goorsky, and B. K. Tanner, Phys. Status Solidi A-Appl. Res. **195**, 265 (2003).
- ¹⁷T. Shibata, K. Asai, S. Sumiya, M. Mouri, M. Tanaka, O. Oda, H. Katsukawa, H. Miyake, and K. Hiramatsu, Phys. Stat. Sol. C **0**, 2023 (2003).
- ¹⁸S. Strite and H. Morkoc, J. Vac. Sci. Technol. B **10**, 1237 (1992).
- ¹⁹C. Ronning, M. Dalmer, M. Uhrmacher, M. Restle, U. Vetter, L. Ziegeler, H. Hofsass, T. Gehrke, K. Jarrendahl, and R. F. Davis, J. Appl. Phys. **87**, 2149 (2000).
- ²⁰K. Lorenz and R. Vianden, Phys. Stat. Sol. C , 413 (2002).
- ²¹U. Vetter, M. F. Reid, H. Hofsass, C. Ronning, J. Zenneck, M. Dietrich, and I. Collaboration, Mater. Res. Soc. Symp. Proc. **743**, 417 (2003).
- ²²U. Vetter, J. B. Gruber, A. S. Nijjar, B. Zandi, G. Oehl, U. Wahl, B. De Vries, H. Hofsaess, M. Dietrich, and I. Collaboration, Phys. Rev. B **74**, 205201 (2006).