



HAL
open science

Fringing Reefs of Reunion Island and Eutrophication Effects - Part 2: Long-Term Monitoring of Primary Producers

Odile Naim, Catherine Tourrand, Enric Ballesteros, Stuart Semple, Lionel Bigot, Bruce Cauvin, Pascale Cuet, Lucien F. Montaggioni

► **To cite this version:**

Odile Naim, Catherine Tourrand, Enric Ballesteros, Stuart Semple, Lionel Bigot, et al.. Fringing Reefs of Reunion Island and Eutrophication Effects - Part 2: Long-Term Monitoring of Primary Producers. Atoll Research Bulletin, 2013, 597, pp.1–36. 10.5479/si.00775630.597 . hal-00909559

HAL Id: hal-00909559

<https://hal.science/hal-00909559>

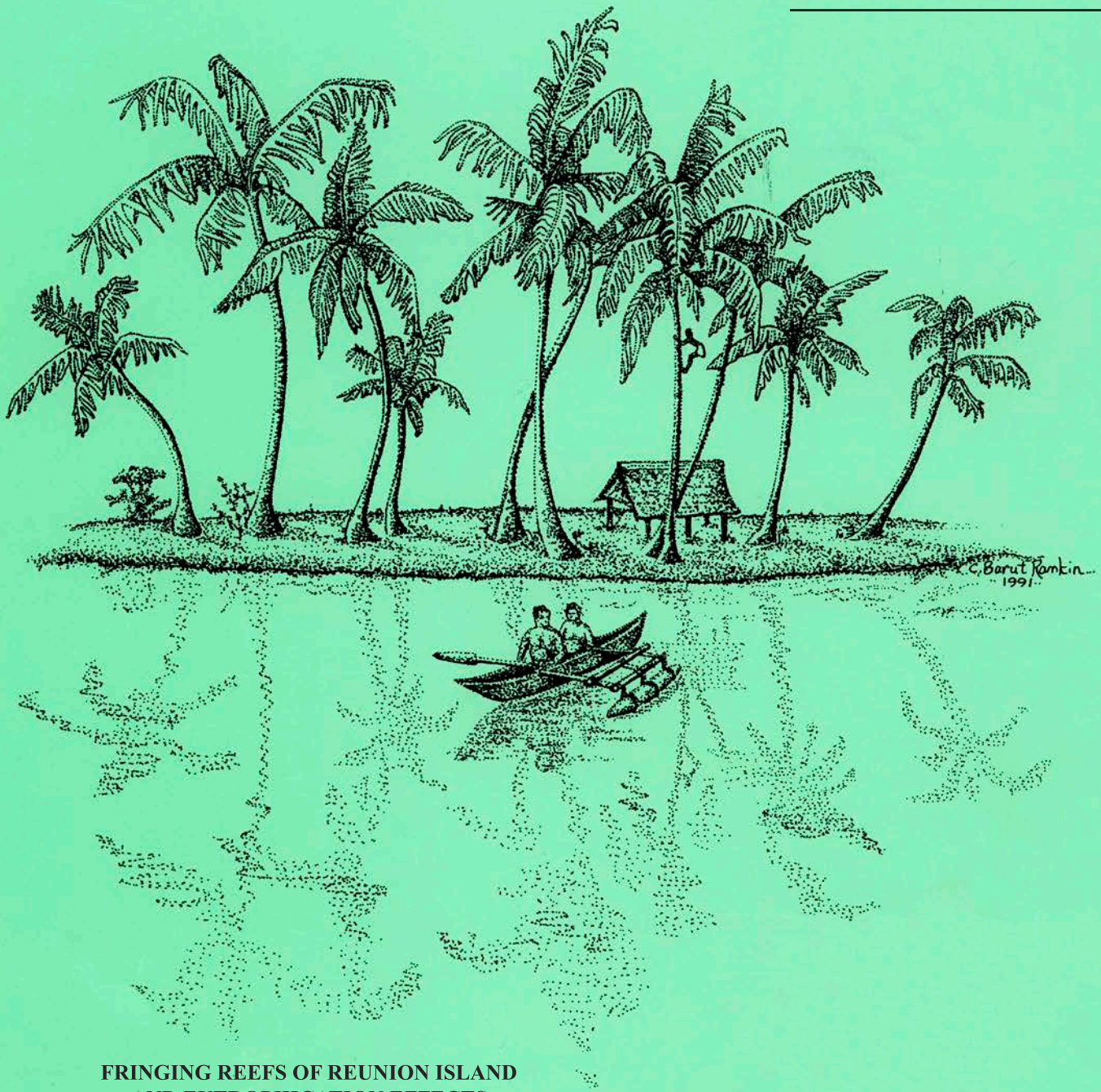
Submitted on 27 Sep 2021

HAL is a multi-disciplinary open access archive for the deposit and dissemination of scientific research documents, whether they are published or not. The documents may come from teaching and research institutions in France or abroad, or from public or private research centers.

L'archive ouverte pluridisciplinaire **HAL**, est destinée au dépôt et à la diffusion de documents scientifiques de niveau recherche, publiés ou non, émanant des établissements d'enseignement et de recherche français ou étrangers, des laboratoires publics ou privés.



Distributed under a Creative Commons Attribution - NonCommercial 4.0 International License



**FRINGING REEFS OF REUNION ISLAND
AND EUTROPHICATION EFFECTS**

No. 596

PART 1: Long-Term Monitoring of Two Shallow Coral Reef Communities

*Catherine Tourrand, Odile Naim, Lionel Bigot, Christophe Cadet, Bruce Cauvin,
Stuart Semple, Lucien F. Montaggioni, Pascale Chabanet and Henrich Bruggemann*

No. 597

PART 2: Long-Term Monitoring of Primary Producers

*Odile Naim, Catherine Tourrand, Enric Ballesteros, Stuart Semple, Lionel Bigot,
Bruce Cauvin, Pascale Cuet, and Lucien F. Montaggioni*

No. 598

PART 3: Long-Term Monitoring of Living Corals

*Odile Naim, Catherine Tourrand, Gerard F. Faure, Lionel Bigot, Bruce Cauvin,
Stuart Semple and Lucien F. Montaggioni*

ATOLL RESEARCH BULLETIN



Smithsonian Institution
Scholarly Press

FRINGING REEFS OF REUNION ISLAND AND EUTROPHICATION EFFECTS

PART 1: Long-Term Monitoring of Two Shallow Coral Reef Communities

*Catherine Tourrand, Odile Naim, Lionel Bigot, Christophe Cadet, Bruce Cauvin, Stuart Semple,
Lucien F. Montaggioni, Pascale Chabanet and Henrich Bruggemann*

PART 2: Long-Term Monitoring of Primary Producers

*Odile Naim, Catherine Tourrand, Enric Ballesteros, Stuart Semple, Lionel Bigot,
Bruce Cauvin, Pascale Cuet, and Lucien F. Montaggioni*

PART 3: Long-Term Monitoring of Living Corals

*Odile Naim, Catherine Tourrand, Gerard F. Faure, Lionel Bigot, Bruce Cauvin, Stuart Semple
and Lucien F. Montaggion*

Atoll Research Bulletin No. 597 ♦ 15 November 2013



Smithsonian Institution
Scholarly Press

All statements made in papers published in the *Atoll Research Bulletin* are the sole responsibility of the authors and do not necessarily represent the views of the Smithsonian Institution or of the editors of the Bulletin. Articles submitted for publication in the *Atoll Research Bulletin* should be original papers and must be made available by authors for open access publication. Manuscripts should be consistent with the “Author Formatting Guidelines for Publication in the Atoll Research Bulletin.” All submissions to the Bulletin are peer reviewed and, after revision, are evaluated prior to acceptance and publication through the publisher’s open access portal, Open SI (<http://opensi.si.edu>).

Published by SMITHSONIAN INSTITUTION SCHOLARLY PRESS
P.O. Box 37012, MRC 957
Washington, D.C. 20013-7012
www.scholarlypress.si.edu

The rights to all text and images in this publication are owned either by the contributing authors or third parties. Fair use of materials is permitted for personal, educational, or noncommercial purposes. Users must cite author and source of content, must not alter or modify the content, and must comply with all other terms or restrictions that may be applicable. Users are responsible for securing permission from a rights holder for any other use.

ISSN: 0077-5630 (online)

FRINGING REEFS OF REUNION ISLAND AND EUTROPHICATION EFFECTS. PART 2: LONG-TERM MONITORING OF PRIMARY PRODUCERS

BY

ODILE NAIM,^{1,2*} CATHERINE TOURRAND,^{3,2} ENRIC BALLESTEROS⁴,
STUART SEMPLE,⁵ LIONEL BIGOT,² BRUCE CAUVIN,⁶ PASCALE CUET,² and
LUCIEN F. MONTAGGIONI⁷

ABSTRACT

Studies on the reef flat of *Saint-Gilles La Saline* between 1987 and 2009 compared spatio-temporal variations of primary producers on two sites, Toboggan and Planch' Alizés. Toboggan (Site-T) is an oligotrophic site characterized by *Acropora* corals, abundant sea urchins and few primary producers. Planch' Alizés (Site-P) is a heterotrophic site, characterized by massive corals, abundant primary producers and occasional sea urchins. From shore to outer reef front, the reef flat comprises three parts: the back reef (B), the coral zone with Large coral strips (L) and the coral zone with Narrow coral strips (N).

This paper (which is Part 2 in a three part series) is divided into four sections. The first (1993, 1996, and 2002) focuses on four groups of primary producers: cyanophytes; turfs (including *Stegastes* epilithic algal communities); encrusting coralline algae; macroalgae. Their abundance and dominant species were recorded in the three subzones, B, L and N, using 50m-line intercept transects (LITs). The second section (1998 to 2009 inclusive, on the two same sites), reports on annually monitored turfs, encrusting coralline and macroalgae on two permanent 20m LITs. These annual records extend periodic records from these same LITs from 1987, 1993, 1996 and 2002. The third section describes species richness of primary producers at the infracentimetric level in zones B, L and N in 1994. In the final section, seasonal variability is documented as changes in the biomass of dominant macroalgae reported monthly over a period of seven months (1993-94).

In 1993-2002, primary producers were dominant at P (average ~ 60%) but inconspicuous at T (~5%). In terms of relative cover, turfs and macroalgae were the dominant forms at both sites (75% turfs, 10% macroalgae at T ; 24% t. and 52% m. at P). On both sites, cyanophytes significantly decreased over time. Among turfs, fine filamentous turfs were prevalent on the back reef on both sites, and also on the

¹ Laboratoire GMGL, Université de Bretagne Sud, Vannes, France

² Laboratoire ECOMAR, Université de la Réunion, Saint-Denis, France (DOM)

³ Département de Physique, Université de la Réunion, Saint-Denis, France (DOM)

⁴ CEAB, CSIC, Blanes, Spain

⁵ Department of Life Sciences, Roehampton University, England

⁶ GIP Réserve Nationale Marine de la Réunion, France (DOM)

⁷ UMR 6536, Université d'Aix-Marseille, France

* Email : odile.naim@univ-reunion.fr

narrow outer coral zone at P. *Stegastes* turf territories dominated both coral zones at Site-T (L and N), but only the L coral zone at Site-P. Encrusting coralline algae were sparse at Site-T but locally abundant at Site-P, where they increased significantly from 1993 to 1996 in both coral zones. There was a major decrease in macroalgae between 1993 and 2002 at P. There were marked differences in the trajectories of decline of the dominant soft macroalgae (*Hypnea valentiae*, *Padina* spp, *Dictyota* spp, *Turbinaria ornata* and *Gracilaria canaliculata*).

Seventy six primary producer species were recorded in the infracentimetric study (52 species at T and 67 at P). Different algae dominated different areas at both sites. At Toboggan, locally dominant species were the small *Gelidium pusillum*, an unidentified Melobesia, *Jania adhaerens*, the encrusting corallines *Hydrolithon onkodes* and *Lobophora variegata*, the turfs *Polysiphonia mollis* and *Anotrichium tenue* (mainly in *Stegastes* territories), *Jania adhaerens* and *Dictyosphaeria verluysii*. At P, the dominants were *Mesophyllum erubescens* encrusting dead hard substrates and decimetric bioclasts in the back reef (B), where they form numerous rhodoliths. In the P coral zones, the dominant taxa were *Lyngbya majuscula* (cyanobacteria) followed by *Hydrolithon onkodes*, *Blennothrix cantharidosma* and *Lithophyllum kotschyianum*. *Jania adhaerens*, *Hydrolithon onkodes* and *Gelidiella acerosa* were dominant in the narrow coral zone (N). The local composition of the algal community appears to be more related to geomorphological zones and the presence or absence of the territorial *Stegastes* fish than to environmental differences between T and P.

There was strong seasonal change in macroalgae biomass in 1993-4. On the back reef of both sites, peak biomass was due to *Hypnea valentiae* in February, when it is significantly greater than it was in January. *Dictyosphaeria verluysii* was dominant and highly visible at Site-T, but extremely rare and hidden below the *Hypnea valentiae* at P. On the outer coral zone (N), biomass was significantly different between most months on both sites. At Site-T in summer (December to March) the peak biomass was due to the "sponge seaweed" *Hydroclathrus clathratus* (Phaeophyceae) which exploded in December, declined in January and disappeared in February. At Site-P, *H.clathratus* was almost absent, and instead, *Gracilaria canaliculata* dominated the community throughout the year. *Dictyosphaeria verluysii* and *D. cavernosa* were prevalent in winter, the former preferring intertidal locations. In autumn (April - June), *Turbinaria ornata* invaded the subtidal substrates on the outer N-zones.

To conclude this Part 2 of the Reunion Island Fringing Reef series, we discuss the influence of nutrients and herbivores (especially sea urchins and the territorial damselfish *Stegastes*) on the abundance and distribution of primary producers.

Key words: Coral reefs, benthic community, subtidal, stability, algae, coverage, diversity, biomass, cyanophytes, *turf algae*, *encrusting corallines*, *macroalgae*, *Lyngbya majuscula*, *Gracilaria canaliculata*, *Hypnea valentiae*, sea urchins, nutrients, herbivory.

INTRODUCTION

Tropical seas generally host a huge biodiversity, and on coral reefs, the variety of sizes, shapes and colors of algae is remarkable as is the versatility of their occurrence and their species richness (Tsuda, 1974; Benayahu & Loya, 1977; Payri & Naim, 1982; Berner, 1990; Littler *et al.*, 2009). Marine algae comprise one-third of all

phyla of the plant kingdom, and have been evolving longer than any group of organisms on earth. In association with stony corals, algae are also the major primary producers and builders of coral reefs. Nevertheless, ecological studies are greatly hindered by the complexity of marine algae taxonomy, especially when trying to understand the effects of anthropogenic and natural changes on the future of marine plant life.

In order to better understand the critical role played by algae in reef ecosystems, the benthic algal community that inhabits the two selected sites (“Toboggan”, Site-T; and “Planch’Alizés”, Site-P) was monitored on the *Saint-Gilles La Saline* fringing reef (western coast of Reunion Island). These sites are typified by a significant difference in algal abundance. On the two sites, the present work aims to assess: (1) the temporal variation of the two community structures of primary producers during the 1993-2003 time period, (2) the evolution of major groups of primary producers from 1987 to 2009 on two permanent transects, (3) the algal species richness and (4) the biomass variability of the dominant macroalgae in a eight-month interval.

MATERIAL AND METHODS

The general environmental setting of the *Saint-Gilles La Saline* reef flat and the details of methods, location of transects etc. were previously described in details in Tourrand *et al.* (2013). At “Toboggan” and “Planch’Alizés” sites, the inner parts of the fringing reef extend over 330 m from the shoreline seawards. Three morphological zones were identified successively across each reef profile. The back-reef zone (labelled B, TB at Site-T and PB at Site-P), 1.5m deep, extends to a distance of 130 m seawards from the shoreline. The coral zone is divided into two subzones: a deeper one (0.8m), with large coral strips (labelled L, TL at Site-T and PL at Site-P), extending between the 130 and 280-m boundary marks along the profiles, and a shallower one (0.4m) with narrow coral strips (labelled N, TN at Site-T and PN at Site-P), extending from the 280 to 330-m boundary marks. Four complementary datasets were gained.

Survey 1: Coverage by dominant primary producers at the ≥ 1 cm level from 1993 to 2002.

This survey was done using the line intercept transect (LIT) method, thus only ≥ 1 cm mats have been recorded (**Table 1**).

In this study, the primary producers were divided into 4 major groups: (a) the Cyanophytes, (b) the turf algae, (c) the encrusting corallines, and (d) the macroalgae. Marine phanerogams, abundant in the north of Saint-Gilles, were limited to a few patches of *Syringodium isoetifolium*, one to several meters in diameter, in the coral zone at Site-P, and were not recorded on the LITs.

Cyanobacteria. They generally occurred as episodic blooms on the *Saint-Gilles La Saline* reef. As a result, they were generally underestimated by the LIT method.

Turf algae. They are subdivided into 3 groups: (1) the *very fine filamentous turfs* (AG) including very small species (i.e. *Jania adhaerens*); this assemblage was not determined at the species level therein; (2) the *territorial damselfish Stegastes turfs* (AGS). Composed of a mixture of species protected by the damselfish (Lison de

Loma & Ballesteros, 2002), these turfs were classified all together as “*Stegastes* turfs”, (3) *the outer reef turfs* (AGE). They occurred as c.10 cm-high cushions, and were composed of an assemblage of small corallines and fleshy algae (see the “Results” Section).

Table 1: Summary of the 4 survey methods. "LIT"= Line Intercept Transect. “T180” means : a permanent transect, marked off every 5 meters at Site-T, distance from the shore line : 180 m. B: Back reef, L: zone of large and deep coral strips, N: zone of narrow and shallow coral strips.

	Aim of the study	Stations	Method	Period
Survey 1	Estimation of coverage and species composition of major fixed benthic categories	At each site, T and P, LITs are parallel to the front, run at fixed intervals of 30m, from 30m to 330m off the beach	50 m-LIT data separated in 10 m samples	1993, 1996, 2002, hot season
Survey 2	Estimation of coverage and species composition of major fixed benthic categories	LITs: T 180, P 270 (L-zone)	Permanent transects (2 * 20 m)	1987, 1993, 1996, 2002, and each year from 1998 to 2009, hot season
Survey 3	Biodiversity of algae	Permanent LITs : T070, P070 (B-zone), T180, P270 (L-zone), T240, P330 (N-zone)	Occurrence of all species of algae into 40 {25 * 25 cm} quadrats (with 25 materialized subquadrats {5 * 5 cm} into each quadrat) along permanent 50m LIT	February 1994
Survey 4	Temporal variation of algal biomass	Permanent LITs : T070, P070 (B-zone) T240, P330 (N-zone)	Sampling of macroalgae into 30 {25 * 25 cm} quadrats along permanent 50m-LIT	Each month (Dec.1993 to June 1994)

Encrusting corallines. On the *Saint-Gilles La Saline* reef flat, they cover dead coral skeletons, some of them forming rising knobs or pillars. They also cover bioclasts, forming rhodoliths in some back-reefs. They are recorded without taxonomic details in datasets 1 and 2.

Macroalgae. When possible, they are identified at the species level or recorded as "mixed macroalgae" when too intimately mixed together. Epiphytes occurring on macroalgae were not taken into account in this survey.

Survey 2: coverage of primary producers from 1987 to 2009, at the ≥ 1 cm level along two permanent transects

Two permanent transects were established in 1987 in the coral zone (L-zone) at both sites, and monitored in 1987, 1993, 1996, 2002, and also from 1998 by the Global Coral Reef Monitoring Network (GCRMN). Three categories of primary producers are taken into account in the GCRMN: turf algae, encrusting corallines, and macroalgae.

Survey 3: estimation of the species richness at a fine resolution along 3 permanent transects (back reef, L and N-zones)

The species richness of primary producers was estimated in February 1994 along three permanent transects (50m) settled in back reef, L and N-zones respectively (**Table 1**). Forty quadrats of 25 * 25 cm, divided into 25 sub-quadrats of 5 * 5 cm, were thrown at random along the 50m line and the occurrence of *all the species of algae* (including epiphytes) into the 1000 subquadrats were recorded (infracentimetric resolution); additional sampling was made when further laboratory analysis was needed.

Survey 4: study of macroalgae biomass on 2 permanent transects (Back reef, N-zone)

Variations in macroalgal coverage and simultaneous biomass (wet and dry weight) were recorded from December 1993 to June 1994 at 2 stations from back-reef and N-coral zones (**Table 1**). A quadrat of 25 * 25 cm, was thrown at random along a 50m line transect. After measuring the coverage of dominant macroalgae present into the quadrat, their thalli were removed from the substrate and, in the laboratory, preserved in 5% formaldehyde sea water. A calcareous stone was added to produce a neutral pH, in order to preserve the integrity of the samples. Later, samples were rinsed under running freshwater (to remove particulate matter and associated micro-organisms), sorted at the species level and identified. Wet weight of each species was measured after removing excess water by spinning, and dry weight immediately after drying for 24h at 100°C.

Data analysis

Due to the multi-species nature of the data and the design of the survey, the most appropriate analyses were multivariate (Clarke & Warwick 2001). To assess patterns in benthic data from all stations in all years, we used non-metric multidimensional scaling (MDS) and principal component analysis (PCA), and to assess temporal patterns in benthic variation, we used Kruskal-Wallis one-way analysis of variance by ranks: this non-parametric method tests equality of population medians among groups. It is identical to a one-way analysis of variance with the data replaced by their ranks and is an extension of the Mann-Whitney U test to 3 or more groups.

Means and standard deviation

Mean coral coverage and densities are given with standard deviation, SD (mean \pm SD). These are calculated as per the following example (shown only for mean calculation here): on Site-T, for a given parameter (e.g. the primary producer coverage), the mean in a subzone (e.g. the back reef, B), for a given-year (e.g. 1993) is denoted TB93, and is the average over the 20 “10m-samples” taken on TB (which means the average of the 50m-LITs located at 30m, 60m, 90m and 120m). Similarly, the TL93 mean is the average over the 25 “10m-samples” taken on TL in 1993 (150 to 270m LITs), and the TN93 is the average over the 10 “10m samples” taken on TN in 1993 (300 and 330m LITs). The TB mean is the average over the 60 “10m-samples” taken in the back reef (20 in each of 1993, 1996 and 2002); the T mean is the average over the 165 “10m-samples” taken (55 in each of 1993, 1996 and 2002).

RESULTS

Survey 1: The two sites, T and P, between 1993 and 2002: spatio-temporal variation of the 4 dominant groups (cyanophytes, turf algae, encrusting corallines and macroalgae)

Distribution of the 4 groups of primary producers at both sites. From dataset 1, the primary producers appeared to be largely dominant at Site-P and inconspicuous at Site-T (T: 5.2 ± 11.4 % of coverage, P: 61.3 ± 26.6 %). In the MDS treatment, we can see that bubbles of Cyanophytes, turf algae (including small turfs, damselfish turfs and outer reef turfs), encrusting corallines and macroalgae mostly occur on P-LITs (**Fig. 1**).

Generalities and temporal variation. At both sites, turfs and macroalgae dominated and averaged 75 to 85% of primary producer coverage (**Table 2**).

Table 2. Percent coverage and relative percentage of the three dominant groups of primary producers from 1993 to 2002 at the two sites (from 30 to 330 m).

Survey 1 (1993-1996-2002)	Site-T (% coverage)	Site-P (% coverage)	Site-T (relative %)	Site-P (relative %)
Cyanophytes	0.3 (1.0)	4.8 (7.6)	5.8	7.8
Turfs (AG + AGS + AGE)	3.9 (11.0)	14.5 (17.5)	75.0	23.6
Encrusting coralline	0.5 (2.1)	10.4 (13.1)	9.6	17.0
Macroalgae	0.5 (2.0)	31.6 (29.5)	9.6	51.6
TOTAL	5.2 (11.4)	61.3 (26.6)	100 %	100 %

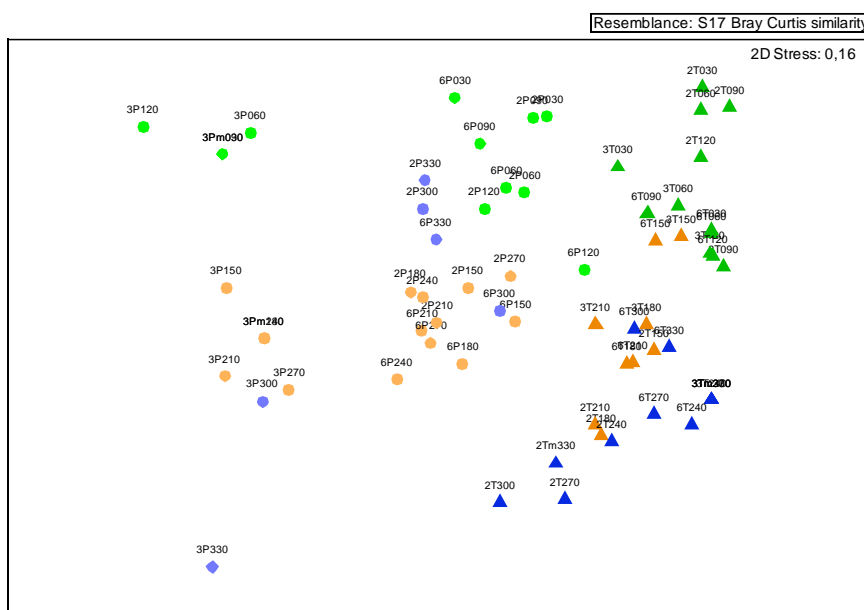
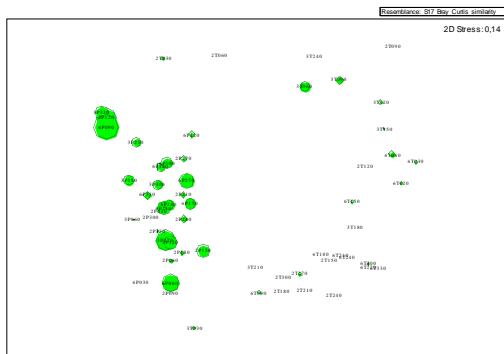
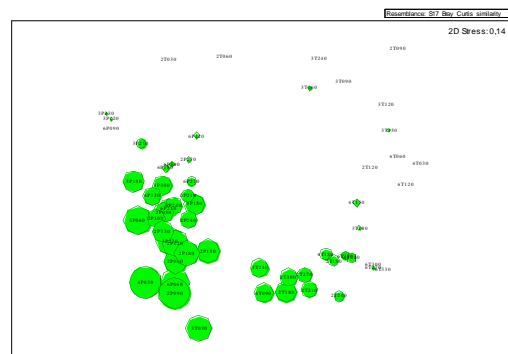


Figure 1a: Two dimensional-MDS configuration obtained with a hierarchical clustering of all the 50m-LIT (all benthic data: corals, algae, etc., echinoderms and territorial fish included, details in Tourrand *et al.*, 2013) using group-average linking of Bray-Curtis. "LIT 3P330" means: year 1993, Site-P, 330 m off the beach; similarly, "LIT 6T60" means: year 1996, Site-T, 60 m off the beach, 2P50: year 2002 etc. T: triangles, P: circles; Back reef in green, Lzone in orange and N-zone in blue.

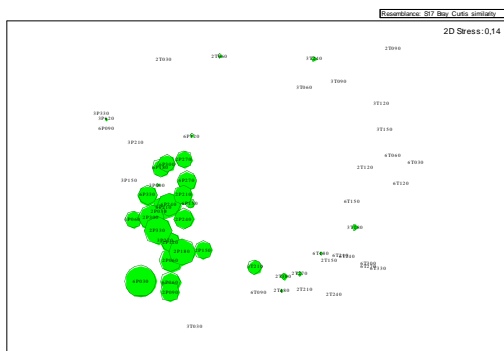
1b. Cyanophytes



1c. Turf algae



1d. Encrusting corallines



1e. Macroalgae

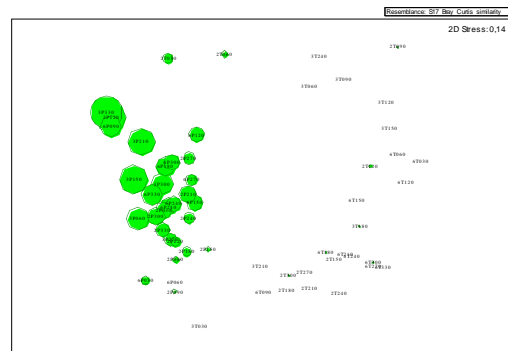


Figure 1b to 1e: Two dimensional-MDS configuration with surimposed bubbles (1993, 1996, 2002 means).

Turfs (t.) dominated at Site-T and macroalgae (m.) at Site-P (T: 75% turfs / 10 % macroalgae; P: 24% t./ 52% m.) (**Fig.2a, 2b, Table 2**). Cyanophytes and encrusting corallines were much more abundant at Site-P, although they were certainly underestimated by the LIT-method (see discussion).

Table 3: Survey 2 (whole sites, 1993, 1996, 2002): Kruskal-Wallis test between means (μ) of the variables in the 3 different years, at the two sites (T= "Toboggan", P= "Planch'Alizés") and in the 3 different geomorphological zones (>: significant increase, <: significant decrease, Ns: non significant).

		μ 1993- μ 1996	μ 1993- μ 2002	μ 1996- μ 2002		μ 1993- μ 1996	μ 1993- μ 2002	μ 1996- μ 2002
Primary Producers	T	Ns	Ns	>>>>	P	<<<<	<<<<	Ns
	TB	Ns	Ns	p=0.0000	PB	<<	<<<	Ns
	TL	Ns	Ns	Ns	PL	<	<<<	Ns
	TN	Ns	>>>	>	PN	<	Ns	Ns
			p= 0.0006	p= 0.0201		p= 0.0247		
Cyanophytes	T	Ns	<	Ns	P	Ns	<<<	<<
	TB	Ns	p= 0.0313	Ns	PB	Ns	p= 0.0005	p= 0.0046
	TL	Ns	p= 0.0018	Ns	PL	Ns	<	Ns
	TN	Ns	Ns	Ns	PN	Ns	p= 0.0478	<
						p= 0.0072	p= 0.0156	

Total Turfs	T	Ns	Ns	>	P	Ns	>	>>
	TB	Ns	Ns	p=0.0226 Ns	PB	Ns	p=0.0291 Ns	p=0.0068 Ns
	TL	Ns	>	Ns	PL	Ns	Ns	Ns
	TN	Ns	p=0.0424 >>	>>>	PN	Ns	Ns	Ns
			p=0.0037	p=0.0004				
Fine filamentous turfs	T	Ns	Ns	Ns	P	Ns	Ns	Ns
	TB	Ns	Ns	Ns	PB	Ns	Ns	Ns
	TL	Ns	Ns	Ns	PL	Ns	Ns	Ns
	TN	Ns	Ns	Ns	PN	Ns	Ns	Ns
<i>Stegastes</i> territories	T	Ns	>>	>	P	Ns	Ns	Ns
	TB	-	-	p=0.0028 -	PB	Ns	Ns	Ns
	TL	Ns	>	Ns	PL	Ns	Ns	Ns
	TN	>	p=0.0163 >>	>>	PN	Ns	Ns	Ns
		p=0.0384	p=0.0088	p=0.0023				
Encrusting corallines	T	Ns	Ns	Ns	P	>>>>	>>>>	Ns
	TB	Ns	Ns	Ns	PB	Ns	Ns	Ns
	TL	Ns	Ns	Ns	PL	>>>>	>>>>	Ns
	TN	Ns	Ns	Ns	PN	>	>>>>	Ns
					p=0.0267	p=0.0000		
Total Macroalgae	T	Ns	Ns	Ns	P	<<<<	<<<<	Ns
	TB	Ns	>>	>>	PB	<<	<<<	Ns
	TL	Ns	Ns	Ns	PL	Ns	<<	Ns
	TN	Ns	Ns	Ns	PN	<	<<	Ns
			p=0.0033	p=0.0033		p=0.0150	p=0.0030	
<i>Hypnea valentiae</i>	T	-	-	-	PB	<	<<	Ns
						p=0.0150	p=0.0030	
<i>Lobophora variegata</i>	T	Ns	Ns	Ns	P	Ns	Ns	Ns
	TL	Ns	Ns	Ns	PL	>>	Ns	Ns
	TN	Ns	Ns	Ns	PN	>	Ns	Ns
						p=0.0014		
<i>Dictyota spp</i>	T	-	-	-	P	Ns	Ns	Ns
	TL	-	-	-	PL	Ns	<<	Ns
	TN	-	-	-	PN	Ns	<	Ns
						p=0.0012		
<i>Padina spp</i>	T	-	-	-	P	Ns	Ns	Ns
	TL	-	-	-	PL	Ns	<	Ns
	TN	-	-	-	PN	Ns	<<<	Ns
						p=0.0373		
<i>Turbinaria ornata</i>	T	-	-	-	P	Ns	Ns	Ns
	TL	-	-	-	PL	Ns	<	<
	TN	-	-	-	PN	Ns	Ns	<<
						p=0.0249	p=0.0158	
							p=0.0041	

From 1993 to 2002, at Site-T, the total coverage of primary producers (PPcv) increased significantly from 1996 to 2002, although still remaining at low rates (<

8%, **Fig. 2a**). This was mainly due to a turf and macroalgal increase (**Table 3**). At Site-P, the PPcv regularly decreased from 1993 to 2002 (**Fig. 2a, 2b**), due to a significant decrease in Cyanophytes and macroalgae coverage. By contrast, turf and encrusting coralline coverage increased significantly.

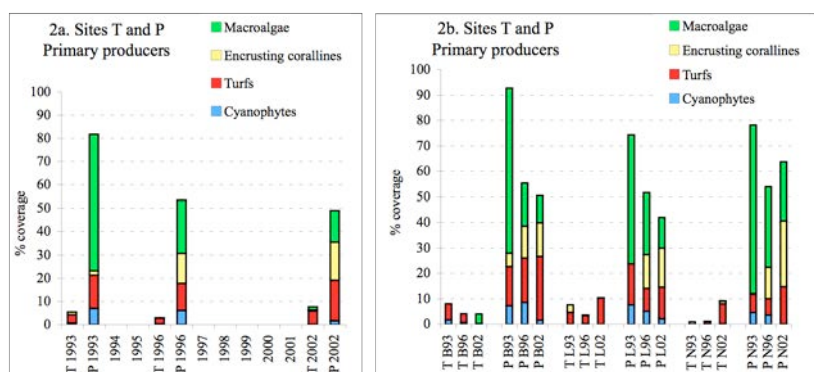


Figure 2a & 2b: Spatio-temporal variation from 1993 to 2002 of the coverage of the 4 groups of primary producers. Left : for the total site, right: in the three geomorphological zones, B= back reef, L= inner zone of Large coral strips, N= outer zone of Narrow coral strips.

Cyanophytes. On average, the Cyanophyta coverage was 16 times higher at Site-P (**Table 2**). At both sites, Cyanophytes significantly decreased over time (**Fig. 2c, 2d, Table 3**).

At Site-T, a significant temporal decrease was observed in the back reef zone. However, given that all the Cyanophytes recorded on Site-T were highly ephemeral in time, these variations are not likely to be meaningful.

By contrast, at Site-P, the cyanophytes were less ephemeral. They declined significantly between 1993 and 2002 in the PL and PN subzones. One of them, *Lyngbya majuscula* showed no significant variation between 1993 and 2002 and remained perennial in the PL-coral zone. It grows attached to corals, in mats of fine, dark, cotton wool-like strands 10 to 30 centimeters long. When *Lyngbya* is present in large amounts, it accumulates gas bubbles around the filaments (from High rates of photosynthesis). At PL, it invaded framework cavities of *Montipora circumvallata* and *Porites (Synaraea) rus* colonies, that, as a result, grew up in the form of candles. Its coverage is extremely under-estimated from the line-transect method. *L. majuscula* has never been recorded nor observed at Site-T.

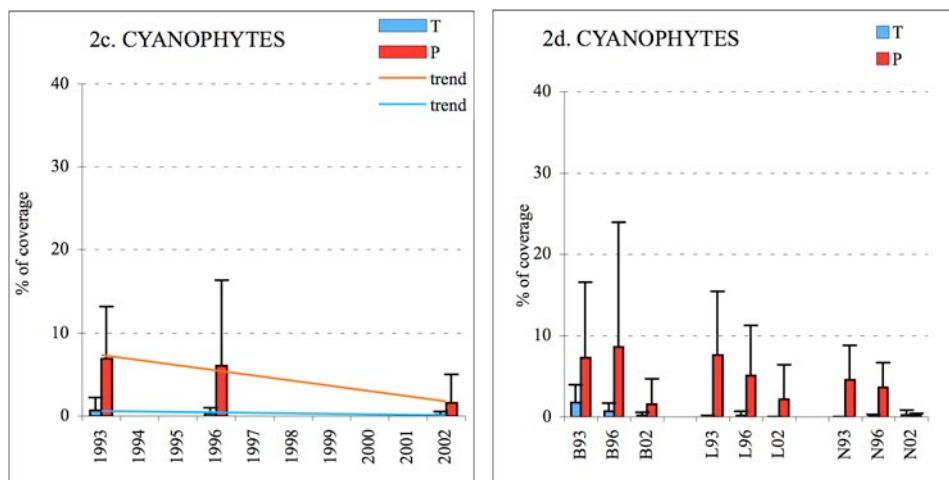


Figure 2c & 2d: Spatio-temporal variation from 1993 to 2002 of the coverage of Cyanophytes. Left : for the total site, right: in the three geomorphological zones.

Turf algae. Their coverage never exceeded 5% at Site-T and is three times higher at Site-P (**Table 2**). Among turfs, fine filamentous turfs (AG) were prevalent in the back reef zone at both sites, and in the PN outer coral zone. *Stegastes* territories (AGS) were dominating in the whole coral zone (L and N) at Site-T, but only in the L-zone at Site-P (**Fig. 2e**).

Outer turfs (AGE) were only observed in the outer PN coral zone. These turfs were mostly formed by *Amphiroa fragilissima*, *Jania adhaerens*, *Actinotrichia fragilis*. A mixture of *Gelidiella acerosa*, *Gelidium pusillum*, *Gelidiopsis intricata* filled up the interstices. These pads were often epiphyted by macroalgae, such as *Dictyosphaeria cavernosa*. They were not abundant enough to allow investigation of their temporal variation.

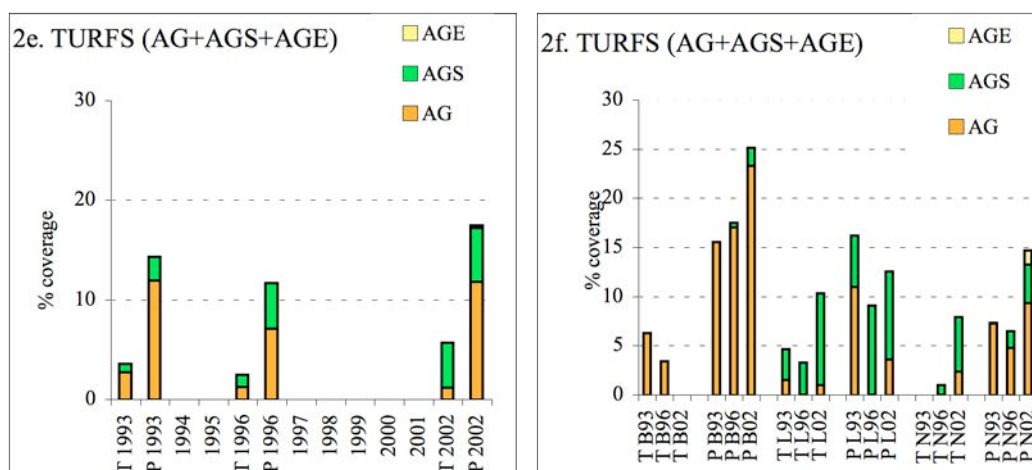


Figure 2e & 2f: Spatio-temporal variation from 1993 to 2002 of the coverage of turfs (AG+AGS+AGE). AGE: outer turfs, AGS: *Stegastes* territories, AG: fine filamentous turfs. Left: for the total site, right: in the three geomorphological zones.

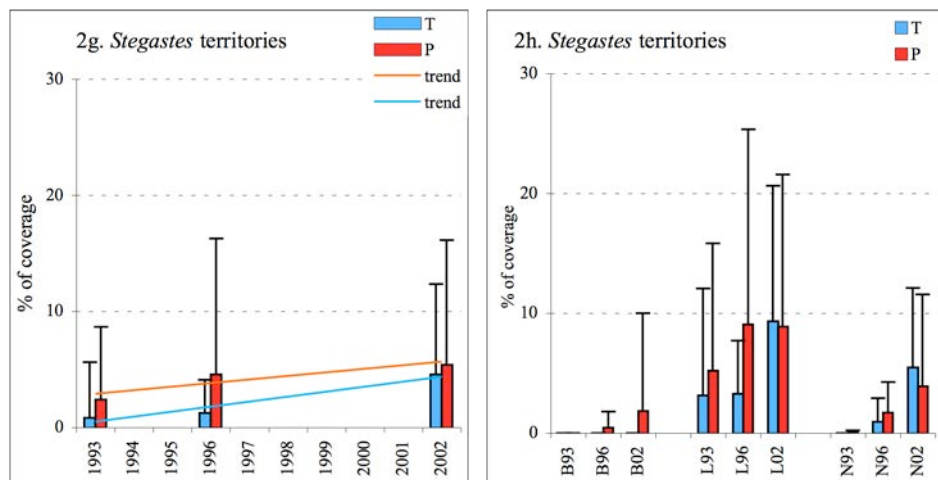


Figure 2g & 2h: Spatio-temporal variation from 1993 to 2002 of the coverage of *Stegastes* territory turfs. Left: for the total site, right: in the three geomorphological zones.

At Site-T, turf abundance increased significantly between 1993 and 2002 (**Fig. 2e; Table 3**), due to the expansion of *Stegastes* territories over time in the coral zones, TL and TN (**Fig. 2g, 2h**).

At Site-P, turfs also increased in abundance through time, although this increase was not obvious (**Table 3**). In the whole coral zone (L+N), the coverage of *Stegastes* territories did not vary significantly.

Encrusting corallines. They appeared almost absent at Site-T, while locally abundant at Site-P (**Table 2**). Considering the temporal variation at Site-P (**Fig. 2i, 2j**), encrusting coralline coverage increased significantly in the coral zone, PL and PN, from 1993 and 1996, and non significantly in the back reef zone (**Table 3**).

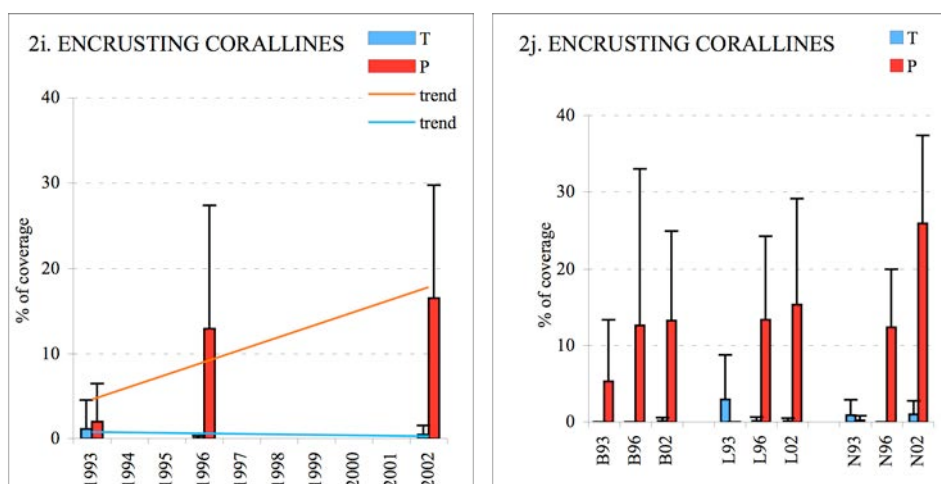


Figure 2i & 2j: Spatio-temporal variation from 1993 to 2002 of the encrusting corallines. Left : for the total site, right: in the three geomorphological zones.

Macroalgae. Inconspicuous at Site-T, macroalgae were abundant at Site-P (**Table 2**). The general trend shows a drastic and significant decrease in macroalgae between 1993 and 1996 in PB and PN sub-zones, and, between 1993 and 2002, in the 3 P-subzones (**Fig. 2k, 2l, Table 3**). While in 1993, macroalgae occurred as monospecific beds about c. 1 to 10 dm diameter, in 2002, they rather form small

patches about c. 1 to 5 cm diameter and/or in intimate species assemblage (called “mixed macroalgae”, **fig. 2l bis**).

At Site-P, all the dominant soft macroalgae declined in different ways from 1993 to 2002 (**Table 3**; *Hypnea valentiae*: **Fig. 2m, 2n**, *Padina spp*: **Fig. 2o, 2p**, *Dictyota spp*: **Fig. 2s & 2t**, *Turbinaria ornata*: **Fig. 2u, 2v**, *Gracilaria canaliculata*: **Fig. 2w, 2x**). On the coral zone (PL+PN), the demise of these macroalgae benefited the encrusting *Lobophora variegata* (**Fig. 2q, 2r**), which, like many encrusting corallines, covered the underlying substrate. At both sites, *Lobophora variegata* occurred as dark-chocolate crusts made up of massive blades, strongly adhering to the subtidal substratum. However, at Site-P, upward-growing blades were also observed on vertical walls of coral cavities.

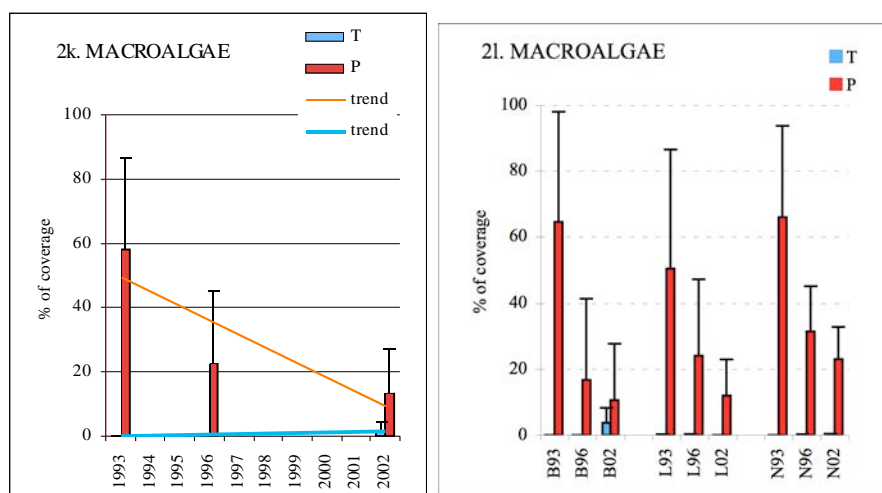


Figure 2k & 2l: Spatio-temporal variation from 1993 to 2002 of macroalgae. Left : for the total site, right and below: in the three geomorphological zones.

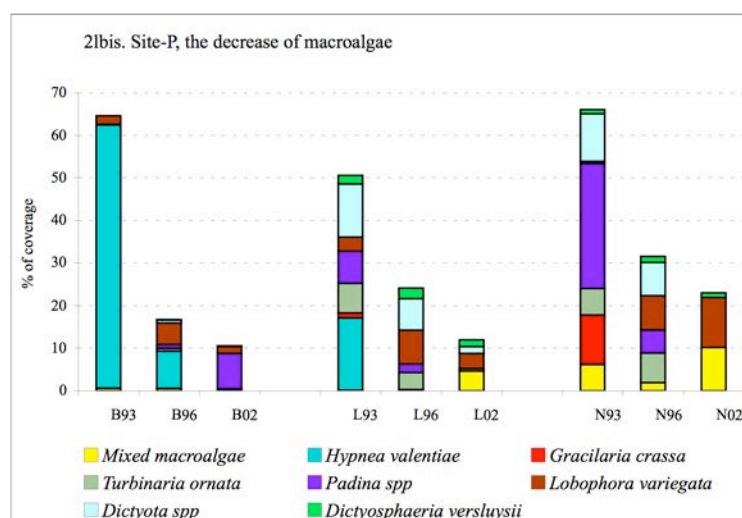


Figure 2l bis: Site-P: spatio-temporal variation from 1993 to 2002 of the dominant species of macroalgae in the three geomorphological zones.

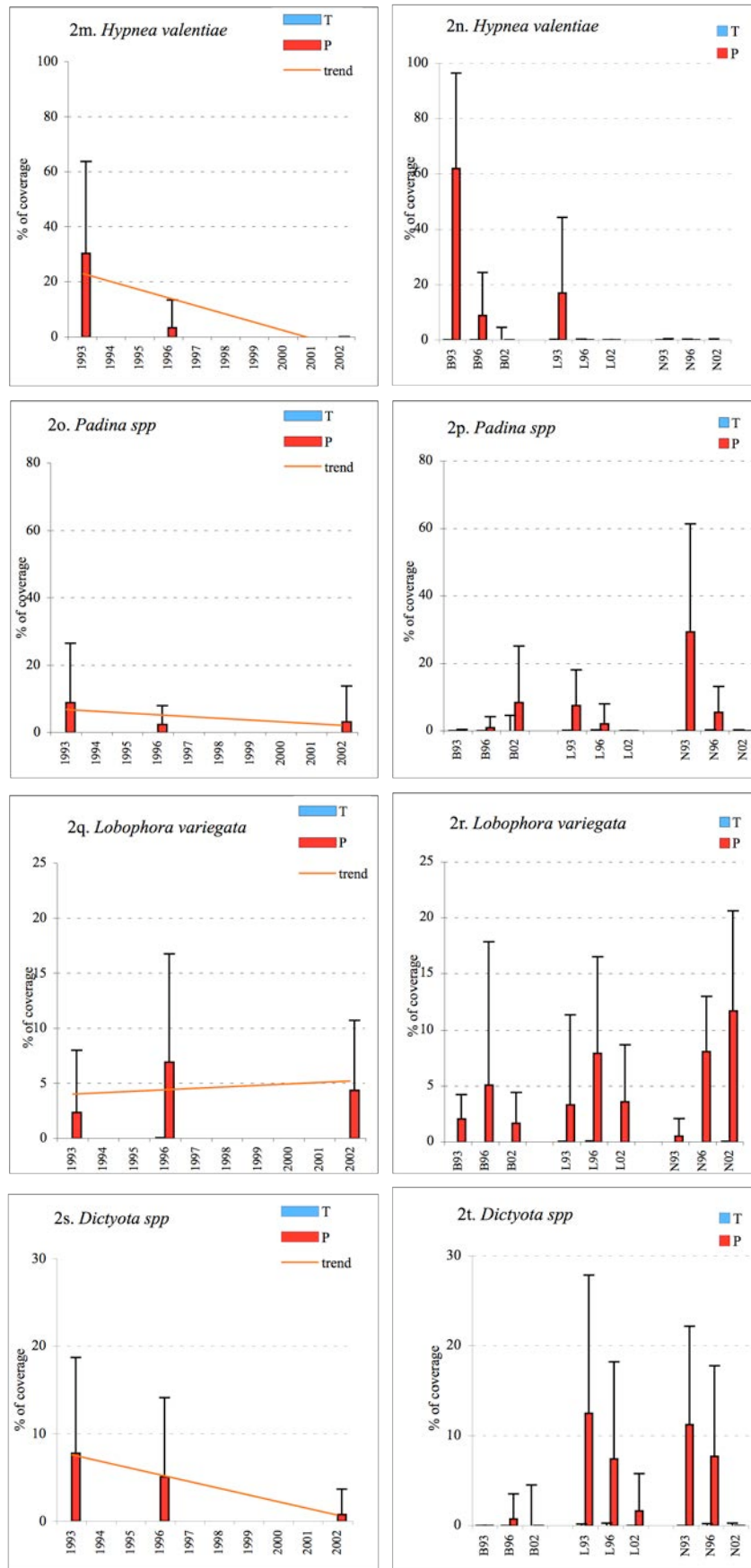


Figure 2m to 2t: Spatio-temporal variation from 1993 to 2002 of the dominant species of macroalgae. Left : for the total site, right: in the three geomorphological zones.

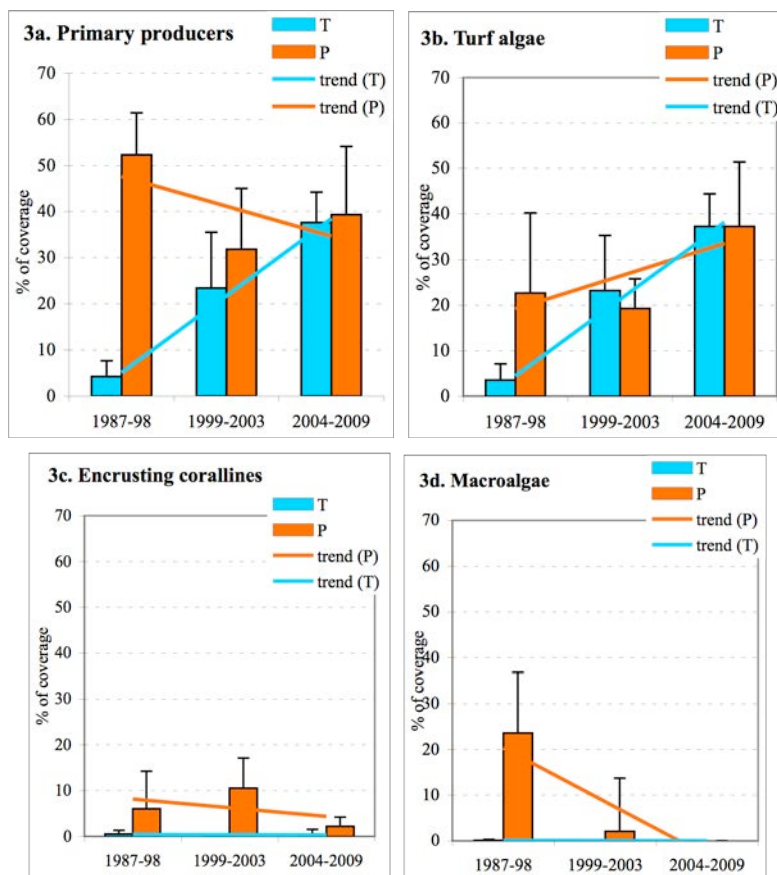


Figure 3a to 3d: Temporal variation of primary producers, turfs, encrusting corallines and macroalgae coverage between 1987-98, 1999-2003 and 2004-2009 "year-blocks".

For both turfs and macroalgae, the 1999-2003 mean coverage was intermediate, and not significantly different from 1987-98 and 2004-09 mean values. Due to high variance, the encrusting coralline mean coverage at P270 did not display any significant temporal variation.

Survey 3: species richness of algae and diversity

Table 5 includes all the species recorded at the 3 stations from each site. Among these species, in terms of occurrence recorded at the highest (infracentimeter) resolution, *Hydrolithon onkodes* and *Lobophora variegata* dominated over the algal community, both encrusting most of the intertidal substrates at both sites and in all the subzones. *Jania adhaerens* was also one of the very common algae, forming low turfs on flat substrates.

In the back reef, TB, the small *Gelidium pusillum*, a species of Melobesiae (unidentified, encrusting the pavement), together with *Jania adhaerens* dominated over the community. In the coral zone, the *Hydrolithon onkodes*-*Lobophora variegata* association was dominating in TL (followed by *Polysiphonia mollis* and *Anotrichium tenue*, both belonging to *Stegastes* territories), while *Jania adhaerens* and *Dictyosphaeria versluisii* dominated in TN.

The PB subzone was dominated by *Mesophyllum erubescens*, which overcapped dead hard substrates and coral rubble of c. 10 cm maximum diameter, thus forming numerous rhodoliths. In the PL subzone, *Lyngbya majuscula* was the

most common species, in association with *Hydrolithon onkodes*, *Blennothrix cantharidosma* and *Lithophyllum kotschyianum*. In the PN outer subzone, *Jania adhaerens*, *Hydrolithon onkodes* and *Gelidiella acerosa* dominated, both filamentous species forming part of the "outer turfs".

Species richness appeared to be higher at Site-P (Fig. 4). It increased from the back reef seawards. Among subzones, PN was the richest in species and occurrence of algae.

Table 5: List of species of algae recorded at the two sites and their occurrence in subquadrats (Example: 20 = occurrence in 20 {5cm x 5 cm} subquadrats of one species at one site. CYAN= Cyanophyta, CHL= Chlorophyta, OCH= Ochrophyta (Paeophyceae), RHO= Rhodophyta.

	PHYLUM	FAMILY	SPECIES	T	P
1	Cyanophytes	Oscillatoriaceae	<i>Lyngbya majuscula</i>	20	441
2	"	Phormidiaceae	<i>Blennothrix cantharidosma</i>	219	334
3	"	Phormidiaceae	<i>Leptolyngbya crosbyana</i>	6	4
4	"	Schizotrichaceae	<i>Schizothrix calcicola</i>	29	25
5	Chlorophytes	Bryopsidaceae	<i>Bryopsis sp.</i>	0	6
6	"	Caulerpaceae	<i>Caulerpa nummularia</i>	0	15
7	"	Caulerpaceae	<i>Caulerpa racemosa</i>	0	25
8	"	Caulerpaceae	<i>Caulerpa serrulata</i>	0	3
9	"	Codiaceae	<i>Codium arabicum</i>	2	0
10	"	Codiaceae	<i>Codium bartlettii</i>	1	0
11	"	Derbesiaceae	<i>Derbesia sp.</i>	0	12
12	"	Cladophoraceae	<i>Cladophora patentiramea</i>	0	1
13	"	Cladophoraceae	<i>Cladophora sibogae</i>	5	17
14	"	Cladophoraceae	<i>Rhizoclonium grande</i>	3	6
15	"	Dasycladaceae	<i>Bornetella sphaerica</i>	2	6
16	"	Dasycladaceae	<i>Neomeris annulata</i>	2	1
17	"	Dasycladaceae	<i>Neomeris van bosseae</i>	0	1
18	"	Polyphysaceae	<i>Parvocaulis parvulus</i>	22	5
19	"	Boodleaceae	<i>Boodlea composita</i>	0	2
20	"	Boodleaceae	<i>Phyllocladion anastomosans</i>	0	1
21	"	Siphonocladaceae	<i>Boergesenia forbesii</i>	47	14
22	"	Siphonocladaceae	<i>Cladophoropsis herpestica</i>	0	38
23	"	Siphonocladaceae	<i>Dictyosphaeria cavernosa</i>	34	206
24	"	Siphonocladaceae	<i>Dictyosphaeria versluysii</i>	393	349
25	"	Valionaceae	<i>Ernodesmis verticillata</i>	2	2
26	"	Valionaceae	<i>Valonia macrophysa</i>	12	7
27	"	Valionaceae	<i>Valonia ventricosa</i>	8	8
28	"	Valionaceae	<i>Valoniopsis pachynema</i>	0	10
29	"	Ulvaceae	<i>Ulva clathrata</i>	9	14
30	"	Ulvaceae	<i>Ulva fasciata/lactuca</i>	0	1
31	Ochrophyta	Dictyotaceae	<i>Dictyota friabilis</i>	0	15
32	"	Dictyotaceae	<i>Dictyota humifusa (cf)</i>	1	166
33	"	Dictyotaceae	<i>Dictyopteris delicatula</i>	0	1
34	"	Dictyotaceae	<i>Lobophora variegata</i>	760	818
35	"	Dictyotaceae	<i>Padina boryana</i>	122	279
36	"	Sargassaceae	<i>Turbinaria ornata</i>	176	151
37	"	Chnoosporaceae	<i>Chnoospora implexa</i>	1	0
38	"	Scytosiphonaceae	<i>Hydroclathrus clathratus</i>	2	4
39	"	Sphacelariaceae	<i>Sphacelaria novae-hollandiae</i>	187	0
40	"	Sphacelariaceae	<i>Sphacelaria tribuloides</i>	5	16
41	Rhodophyta	Corallinaceae	<i>Amphiroa fragilissima</i>	113	225
42	"	Corallinaceae	<i>Jania adhaerens</i>	460	548

43	“	Corallinaceae	<i>Lithophyllum kotschyanum</i>	0	270
44	“	Corallinaceae	<i>Lithophyllum pygmaeum</i>	36	7
45	“	Corallinaceae	<i>Hydrolithon onkodes</i>	809	943
46	“	Corallinaceae	<i>Hydrolithon sp.</i>	0	3
47	“	Hapalidiaceae	<i>Mesophyllum crispescens</i>	40	0
48	“	Hapalidiaceae	<i>Mesophyllum erubescens</i>	287	374
49	“	Hapalidiaceae	<i>Melobesia - sp. A</i>	210	0
50	“	Hapalidiaceae	<i>Melobesia - unidentified</i>	342	325
51	“	Galaxauraceae	<i>Actinotrichia fragilis</i>	10	1
52	“	Galaxauraceae	<i>Galaxaura rugosa</i>	44	0
53	“	Ceramiaceae	<i>Centroceras clavulatum</i>	187	0
54	“	Ceramiaceae	<i>Ceramium camouii</i>	201	38
55	“	Ceramiaceae	<i>Corallophila huysmansii</i>	54	58
56	“	Wrandeliaceae	<i>Anotrichium tenue</i>	293	58
57	“	Rhodomelaceae	<i>Digenea simplex</i>	0	29
58	“	Rhodomelaceae	<i>Chondrophyucus columellaris</i>	0	25
59	“	Rhodomelaceae	<i>Laurencia distichophylla</i>	88	29
60	“	Rhodomelaceae	<i>Laurencia decumbens</i>	4	7
61	“	Rhodomelaceae	<i>Laurencia tenera</i>	0	5
62	“	Rhodomelaceae	<i>Neosiphonia ferulacea</i>	293	58
63	“	Rhodomelaceae	<i>Polysiphonia mollis</i>	296	66
64	“	Rhodomelaceae	<i>Tolypocladia calodictyon</i>	0	25
65	“	Gelidiaceae	<i>Gelidium pusillum</i>	612	275
66	“	Gelidiellaceae	<i>Gelidiella acerosa</i>	99	644
67	“	Hypneaceae	<i>Hypnea spinella</i>	8	210
68	“	Hypneaceae	<i>Hypnea valentiae</i>	39	20
69	“	Peyssonneliaceae	<i>Peyssonnelia conchicola (cf)</i>	99	46
70	“	Peyssonneliaceae	<i>Peyssonnelia valentinii</i>	32	0
71	“	Solieriaceae	<i>Wurdemannia miniata</i>	0	3
72	“	Gracilariaceae	<i>Gracilaria canaliculata</i>	0	42
73	“	Gracilariaceae	<i>Gracilaria spinuligera</i>	0	10
74	“	Champiaceae	<i>Champia parvula</i>	0	24
75	“	Lomentariaceae	<i>Ceratodictyon intricatum</i>	227	273
76	“	Rhodymeniaceae	<i>Coelothrix irregularis</i>	1	237
TOTAL				6954	7882
Mean occurrence into a 5cm * 5cm subquadrat				2.32	2.63

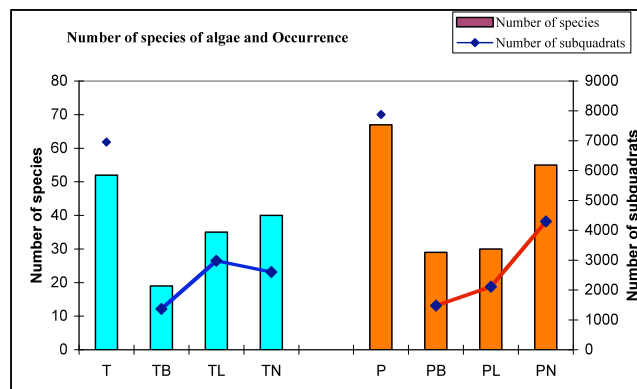


Figure 4: Survey 3: Number of species of algae and occurrence in small subquadrats (5cm x 5cm; see table 2), at the two sites T and P.

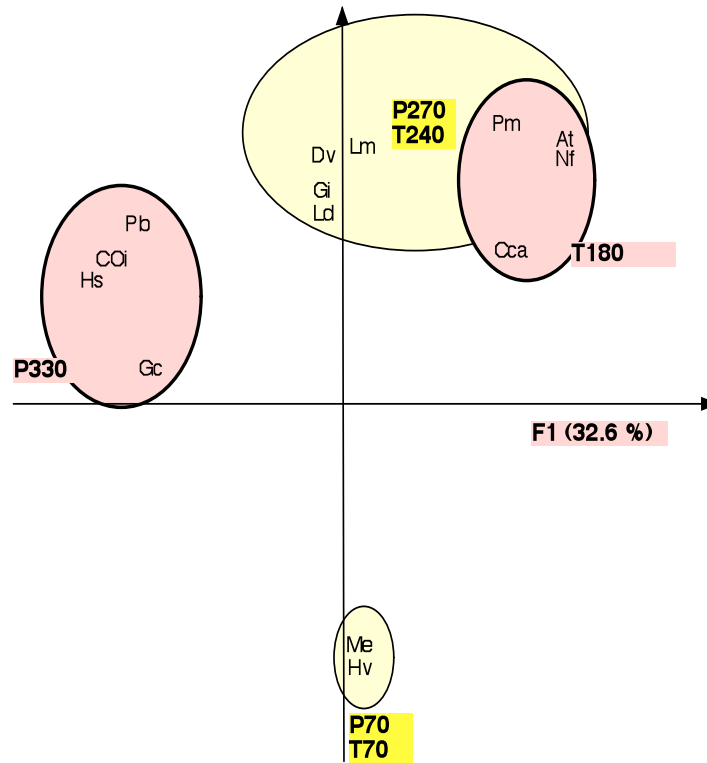


Figure 5: Survey 3: Principal component analysis on dataset 3, F1/F2. **T180 (TL):** *At: Anotrichium tenue*, *Nf: Neosiphonia ferulacea*, *Cca: Ceramium camouii*, *Polysiphonia mollis*, **P330 (PN):** *Hs: Hypnea spinella*, *COi: Coelothrix irregularis*, *Pb: Padina boryana*, *Gc: Gracilaria canaliculata*, T240 (N-zone), **P270 (PL):** *P. mollis*, *A. tenue*, *N. ferulacea*, **T70 (TB)** and **P70 (PB):** *Rhizoclonium grande*, unidentified *Melobesia*, *Hypnea valentiae*, *Mesophyllum erubescens*.

The algal diversity, depending on the occurrence of each species in the sub-quadrats (and not abundance), in the form of the Shannon Weaver index ($H' \text{ Log}$) was approximately the same at both sites (T: 3.143, P: 3.196), as well as in subzones B, L, N (**Fig. 4**). The principal component analysis applied on the 6 subzones data shows (**Fig. 5**) that Factor 1, the most explanatory factor (32.6% of the variance), opposes a community typified by the occurrence of *Stegastes* turfs (including *Anotrichium tenue*, *Neosiphonia ferulacea*, *Ceramium camouii*, *Polysiphonia mollis*) on P270 and T180 transects (PL and TL zones respectively) to algae present on P330 (PN sub-zone), represented by macroalgae and outer turfs (*Hypnea spinella*, *Coelothrix irregularis*, *Padina boryana*, *Gracilaria canaliculata*). Factor 2 (30.6% of the variance) opposes also the *Stegastes* turf community (*P. mollis*, *A. tenue*, *N. ferulacea*) on P270 (PL) and T240 (TN) to a community of algae composed of *Rhizoclonium grande*, an unidentified *Melobesia*, *Hypnea valentiae*, *Mesophyllum erubescens* mostly characterizing the T70 and P70 back reefs. Similarly, Factor 3 (21.2% of the variance, not shown) opposes the “turfs” variables (*C. camouii*, *Gelidiella acerosa*) on P270 and T180 (PL and TL subzones respectively) to a specific assemblage (*Centroceras clavulatum*, *Sphacelaria novae-hollandiae*, *Galaxaura rugosa*) only observed on T240 (TN). Differences in the algal community composition therefore appear to be more explained by reef morphological attributes than by ecological differences between Sites T and P. Epilithic algal species belonging to *Stegastes* territories are often segregating the stations.

Survey 4: Biomass (monthly variation) of dominant species of macroalgae

The back reef (B-zone). The macroalgal biomass was significantly different between the two sites only in January ($p < 0.01$) (**Fig. 6a, 6b**). The peak of biomass was due to the development of *Hypnea valentiae* in February (**Fig. 6e, 6f**).

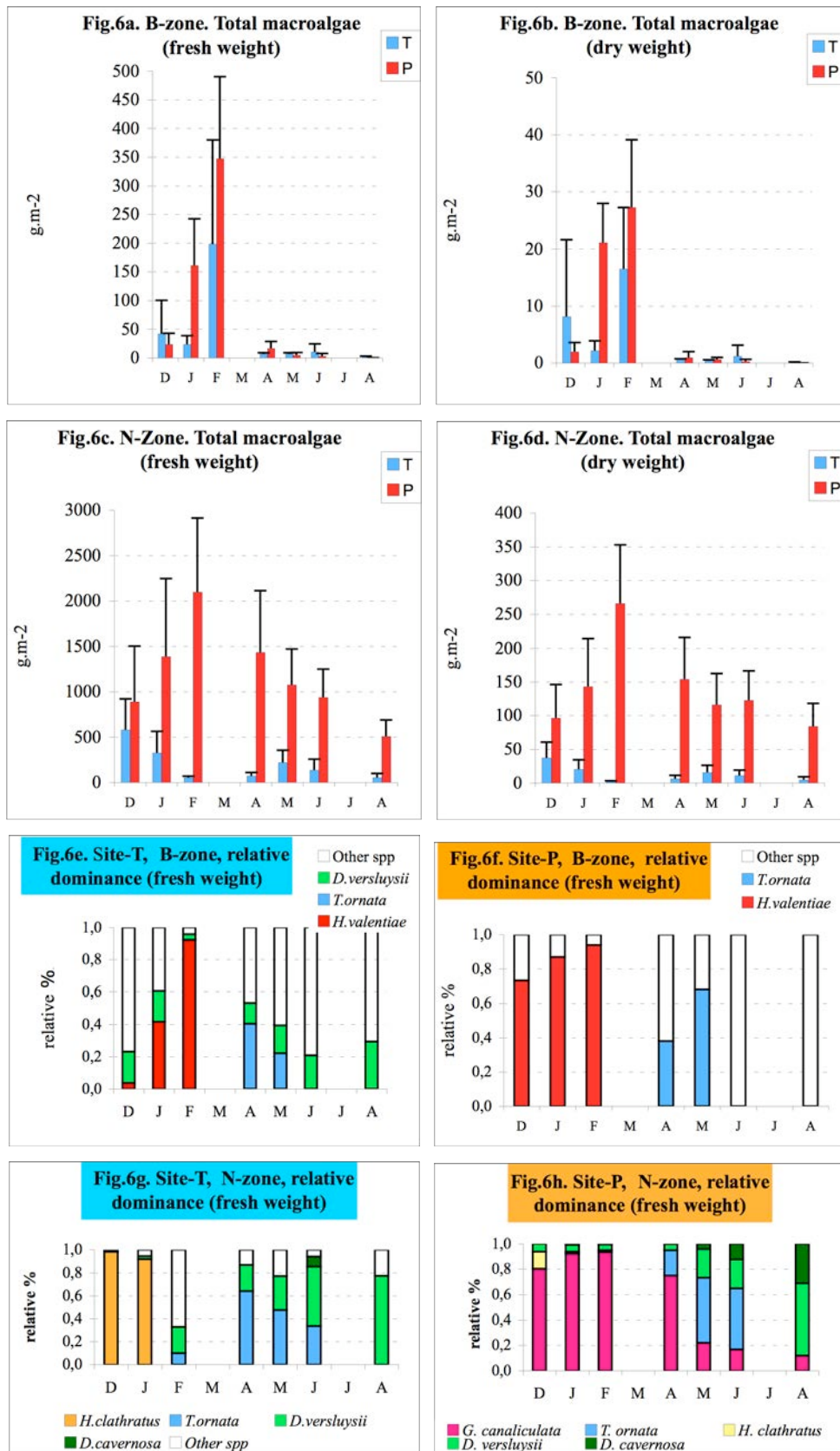


Figure 6a to 6h: Biomass (fresh & dry weight) and relative dominance (fresh weight) of the dominant species of macroalgae in fresh and weight at Site-T and Site-P (T= “Toboggan”; P= “Planch’Alizés”), from December 1992 to August 1993, in the back reef (B-zone) and narrow coral strip zone (N-zone).

Dictyosphaeria versluysii, also dominant in the T back reef, appeared to be absent from P-back reef whereas it was only hidden by the *Hypnea valentiae* large thalli.

The outermost N-zone. The biomass was significantly different from month to month between the two sites, except in December (**Fig. 6c, 6d**). At Site-T, in summer (December to March), the peak of biomass resulted from the appearance of *Hydroclathrus clathratus* (**Fig. 6g**). In Reunion, this Phaeophyceae blooms in December, declines in January and disappears in February. In this oligotrophic environment, *Boodlea composita* was also observed forming patches of up to around 10cm diameter (not recorded on LITs). At Site-P, *H. clathratus* was almost absent while *Gracilaria canaliculata* not only dominated over the community but persisted throughout the year (**Fig. 6h**). *Dictyosphaeria versluysii* and *D. cavernosa* were prevalent in winter, the first of these mainly occurring at intertidal locations. In autumn, *Turbinaria ornata* in turn became prevalent and dominated the subtidal coral zone, although its development was partly hindered by that of *Gracilaria canaliculata* in the outer PN subzone.

DISCUSSION

Behaviour of the four groups of primary producers from 1993 to 2009: coverage (LITs) and biomass

Cyanophytes. From 1993 to 2002, Cyanophytes were 14 times more abundant in coverage at Site-P than at Site-T. The dominant species recorded at Site-P, *Lyngbya majuscula*, was totally absent at Site-T and its coverage showed no significant variation over this period. In addition, *L. majuscula* was and is still perennial at Site-P, even in winter. *Schizothrix calcicola*, the second dominant Cyanophyte, occurred in summer blooms in the back reef areas in both sites. Rare in the T back reef, it can be locally abundant in the P back reef and become invasive when reef waters are warm and calm.

Cyanophytes are capable of nitrogen fixation (Burris, 1976; Potts & Whitton, 1977) and may therefore contribute to the nitrogen enrichment of waters (Baravetza & Larkum, 1986). Miller *et al.* (1999), testing the effects of nutrient enrichment on coral communities, showed that the development of filamentous cyanophytes was enhanced by increasing nutrient levels.

On the *Saint-Gilles La Saline* reef flat, *Lyngbya majuscula* is abundant in the PL subzone and in other MAS coral zones (such as Site-“Club Med”) but absent or extremely rare at Site-T and other ACR communities (such as Site-“Petit Trou d’eau”). As temperature is higher on reef flats subject to outgoing reef waters (see part 1), *L. majuscula* may be considered at Reunion as a bioindicator of a dystrophy, linked to freshwater inputs and local temperature increase. Morrow *et al.* (2011) revealed that extracts of two *Lyngbya* species strongly stimulate microorganisms at the surface of coral colonies. Furthermore *Lyngbya* is a potentially toxic, marine cyanobacterium. Then, at Reunion, *Lyngbya* can contribute to the decrease of sensitive corals such as *Acropora* in MAS communities by increasing the coral susceptibility to disease and/or by being toxic.

Over recent decades, *Lyngbya* blooms have increased in tropical and subtropical régions around the world. In Australia, the key environmental conditions

for *Lyngbya* growth (<http://www.ehp.qld.gov.au/coastal/ecology/lyngbya-updates/index.html>) appear to be the presence of bio-available nutrients such as phosphorus, nitrogen and iron, dissolved organic matter and favourable light, salinity and temperature conditions (>24°C) in the environment.

Turf algae. Fine filamentous turfs (AG) did not vary significantly in coverage from 1993 and 2002.

From 1993 to 2002, the coverage of *Stegastes* damselfish territory turfs was stable at Site-P while they were steadily increasing at Site-T. Among *Stegastes* species, *Stegastes nigricans* was dominant (Tourrand *et al.*, 2013). In the epilithic algal communities defended by *Stegastes nigricans*, Lison de Loma & Ballesteros (2002) recorded, at both Site-T and Site-P, one Cyanophyte, eight Chlorophytes, fifteen Rhodophytes, and four Ochrophytes, and showed that the assemblage was different between sites.

Stegastes nigricans preferentially establishes its territory at the top of the branches of *Acropora*. During this 9 year-period, at Site-T, as *Acropora* coverage increased steadily, the density of *Stegastes* associated turfs similarly increased (**Fig. 2g**). Indeed, this fish takes advantage of any mortality due to prolonged air exposure or a bleaching event (Letourneur *et al.*, 1983). From 1987-98 to 2004-2009, at Site-T, the turf coverage continued to increase significantly. At PL subzone, a shift in primary producer composition occurred: in 1997-98, turfs and macroalgae represented 43 and 45% of PPcv respectively, while in 2004-2009, turfs represent 94% of the PPcv, and macroalgae have disappeared. These results reflect a shift in abiotic conditions, and particularly a decrease in nutrient supply at Site-P (see below).

Concerning outer turfs (AGE), these are not abundant enough to be taken into account. Nevertheless, the “outer turf assemblage” made up of dominant articulated corallines (see details about the species composition in the “Results” section) only occurred on the PN outer coral zone. Now, in Reunion, this assemblage often signals a freshwater input on the reef flat zones, such as Saint-Leu city, Etang-salé, and particularly Saint-Pierre, where it can form a clearly differentiated facies (Cuet 1989a; Naim, 1989).

Encrusting corallines. As calcite depositors, encrusting corallines are important framework builders. At Site-P, they had a higher coverage than at Site-T, where they occur in small patches (one to a few cm in diameter). According to Delgado & Lapointe (1994), nutrient-enrichment was suggested to enhance productivity of encrusting corallines, but to a lower extent than that of fleshy algae. In the whole P coral zone, a significant increase in encrusting corallines coverage was observed between 1993 and 1996 (**Fig. 2j**), the coverage then remaining stable between 1996 and 2002. In fact, during the 1993 survey, corallines did coexist with macroalgae: they were living below the dense macroalgal “canopy” dominated by brown algae, and thus not taken into account by LITs. In 1996 and 2002, the decline of macroalgae led naturally to an increase of encrusting coralline coverage (and also of the encrusting *Lobophora variegata* coverage). An inverse relationship between corallines and fleshy macroalgae occurred, and may have been augmented by macroalgal-trapped sediments smothering the corallines (Steneck, 1997). As recorded by Littler and Littler (2006), encrusting corallines often predominate by default.

At Site-P, the regression of macroalgae, that occurred in 1995, may also have led to a better feedback control on the macroalgal standing crop by herbivore fish (as

sea urchins were and are still absent in 2011) (Hatcher & Larkum, 1983; Steneck, 1988) and thus, to an increase of encrusting coralline coverage. Controlled experiments with limpets in St-Croix, following *Diadema antillarum* mass mortality in Caribbean, suggest also that corallines require herbivores to remove fouling filamentous epiphytes (Steneck, 1997). Similarly, Chazottes *et al.* (2002) showed a significant negative correlation between grazing activity and encrusting coralline coverage on the *Saint-Gilles La Saline* reef. Accordingly, the ecological role of encrusting corallines cannot be separated from the influence of fleshy macroalgae, herbivores and productivity gradients (Littler & Littler, 2006).

Moreover, ambient hydrodynamic conditions also influence the degree of competition between encrusting corallines and fleshy algae. In 1985-1990, at Site-P, every year, when strong trade-wind-generated swells broke over the reef front, most of the fleshy algae were torn off and carried away. As a result, encrusting corallines had 6 months of respite before suffering the next macroalgal overgrowth (Naim, 1993).

Macroalgae

Abundance. The abundance of macroalgae is considered to be a key measure of reef health (Steneck & Sala, 2005). However, in Hawaii, Vermeij *et al.* (2010) proposed that high turf abundance is a better indicator of reef decline than high macroalgal abundance because turf abundance is the highest on reefs with low coral cover and few fish. This emphasizes that changes in community composition are context-dependent and that not all degraded reefs look the same.

At Site-P, in 1993, the dominance of macroalgae on the substratum, especially of the brown algae *Padina spp.*, *Dictyota spp.*, *Turbinaria ornata*, and the red alga, *Gracilaria canaliculata*, related to a reef flat in poor health and high nutrient levels (Cuet *et al.*, 1988). In 1995, brown algae biomass regressed and in 2002, during survey 1, macroalgae species appeared mostly intimately mixed together. Therefore, it can be affirmed that diversity in macroalgae (not measurable with LIT) has increased. The decline in macroalgal coverage (except for the encrusting *Lobophora variegata*), and the increase in turf coverage, in 1996 and 2002 are correlated with a better health of massive corals and a significant increase in their coverage (Tourrand *et al.*, 2013).

Macroalgal biomass. In the 1993-94 hot season (February), in outer coral zones TN and PN, biomass was ten times higher at PN. At TN, only one species, *Hydroclathrus clathratus*, occurred in large amounts. This brown alga is known to outbreak during the boreal spring and to disappear quickly, as observed here in survey 4, but also in Eilat, Red Sea (Benayahu & Loya, 1977) and in Moorea, French Polynesia (Payri & Naim, 1982). In the PN subzone, most of the substrate was occupied, almost throughout the year, by macroalgal assemblages, that underwent changes in composition over time.

In back reef areas TB and PB, the same trends as in the outer coral zones were observed, although displaying a lower biomass. The T back reef was typified by inconspicuous macroalgal populations, except in February (in the mid-rainy season), while the P back reef was invaded with *Hypnea valentiae* during the rainy season and *Turbinaria ornata* on hard substrates during the April-May period, both highly covered by epiphytes.

The PN outer coral zone appeared the more favourable zone for primary producers, as their abundance, species richness and biomass was the highest across the studied reef flat system. In 1993-94, the PN macroalgal biomass measured in survey 4 was comparable with the biomass measured in Kaneohe Bay, in the worst affected area (sector CE; Smith *et al.*, 1981; Semple, 1997) (**Table 6**). Over the last 22 years, the PN subzone remained one of the most degraded zone at Site-P and on the *Saint-Gilles la Saline* reef flat.

The case of *Gracilaria canaliculata* (formerly named *G. crassa*), *Hypnea valentiae*, *Lobophora variegata* and *Turbinaria ornata*

The 1985-1990 record. Among macroalgae recorded here, emphasis has to be given to *Gracilaria canaliculata*. From 1985 to 1990, during summer times, on reef flats from both Reunion and nearby Mauritius Island, *Gracilaria canaliculata* was observed to be invasive in areas subjected to freshwater inputs and high nutrient-enrichment (Cuet, Naim, unpublished).

As far as we know, on the three sites of *La Saline* reef, labelled “Planch’Alizés” (Site-P), “Club Med”, and at “south of the Hermitage pass” (see Fig.1, Tourrand *et al.*, 2013), macroalgae were extremely abundant (Naim, 1993 and unpublished). In 1980’s, in summer, perennial *Gracilaria canaliculata* populations were observed overgrowing and as a result, killing living coral colonies at Site-P and Site-Club Med (Photograph 1). At Site “South of the Ermitage pass”, where coral degradation, the solid and rubbery thalli of *G. canaliculata* were devastating, wrapping and smothering living coral strips, of a meter or so, over one single month. A similar event was previously described in Kaneohe Bay, Hawaii, during the 1960’s, but here the invasive species implicated was *Dictyosphaeria cavernosa* (Banner, 1974; Smith *et al.*, 1981); Banner also reported a dense growth of *Gracilaria sp.*, related to sewage pollution.

The successful development of *Gracilaria canaliculata* can be then explained by its rapid growth rate, its grazer resistance, its seasonal persistence, and its dispersal capacity, as observed *in situ* in nutrient-enriched MAS communities at Reunion and Mauritius (Cuet, Naim, non published). Studying the $\delta^{15}\text{N}$ ratio variability in tissues of the sponge *Cliona inconstans* and those of three coral species present in ACR (Site-T) and MAS (Site-Club Med), Risk *et al.* (1989), showed that the $\delta^{15}\text{N}$ signal at Site-Club Med was close to that of human urine, revealing then that sewage impacted the reef flat. The *G. canaliculata* growth rate can be explained by a rapid exploitation of nutrient pulse: Nelson (1985) demonstrated that photosynthesis of *G. canaliculata* is immediately enhanced by exposure to concentrations of dissolved ammonia up to 10 μM . The alga has also the ability to store nitrogen after nutrient pulses (Ryther *et al.*, 1981; Bird *et al.*, 1982). Moreover, at Site-P and Site-Club Med, when most of macroalgae are swept off by heavy swells in April, the thalli of living *G. canaliculata* remained trapped between living branching corals and/or massive coral cavities. Hidden in holes or protected by branches during winter, *G. canaliculata* also escaped grazing by large herbivores, such as the *Naso* fish, that can be locally abundant in MAS communities.

Considering now the status of *Lobophora variegata* in the 1980’s at Site-P, in the L and N coral subzones, it occurred in crusts and blades, housed under the fronds of macroalgae, but blades only overgrew the bases and/or hollows of living corals. On the same reef, according to Chazottes *et al.* (2002), there was an inverse correlation

between pressure of sea urchin grazing and *Lobophora variegata* coverage. In the Caribbean, this alga has a widespread distribution and, due to its creeping growth form, is considered to be particularly aggressive towards corals (Nugues & Bak, 2006).

Considering now the status of *Hypnea valentiae* in the back reef areas of Site-P and Site-Club Med during summer in the 1980's, it appeared that its continuous mats were heavily epiphytized by Cyanophytes, turfs and other macroalgae, and therefore often extended to 0.5 m in height above the sand bottom. The filamentous thalli of *Hypnea valentiae* were then overgrowing small living corals of c. 20-40 cm large, usually *Porites (P.) lutea* and *Millepora exaesa*, sparing larger coral colonies (*Montipora circumvallata* and *P (Synaraea) rus*) but also limiting coral recolonization. However, *H. valentiae* was ephemeral and carried away by the trade-wind swells. It therefore released corals in winter and left the resistant ones only partly damaged.

Every spring, when *Galaxaura* developed in association with *Hypnea*, the algal assemblage hosted numerous sea hares (1-10 cm), eating the *Galaxaura* calcareous filaments. From 1990 onwards, these sea hares have never been observed within the *Hypnea/Galaxaura* thalli. In 1990's, such an outbreak of *Aplysia* was also observed at the outfall of the turtle farm (Saint-Leu) (c. \leq 20cm-*Dolabella auricularia*).

The shift in macroalgae dominance. Since the beginning of the 1990's, following the settlement of the sewage plant system along the western coast of Reunion, groundwater apparently contributed moderately to the reef nutrient budget (Cuet *et al.*, 2006). Thus, at Site-P, the drastic decrease in macroalgae coverage can be referred to a "phase shift" due to a lower nutrient availability and better ambient conditions for corals.

Between 1993 and 1996, the *Gracilaria canaliculata* biomass dropped and from 1995, thalli of *G. canaliculata* virtually disappeared from the Sites "Planch' Alizés" and "Club Med" (Photograph 2). At the scale of the *Saint-Gilles La Saline* reef, some thalli (c. 10cm large) of this alga were only observed close to some ravines (e.g. "south Ermitage pass", "north Trois Bassins pass").

Similarly, in summer 1995, coverage and biomass of *H. valentiae* occurred only in patches a centimeter or so in height. Benefiting from the demise of macroalgae, the *Lobophora variegata* coverage increased "by default" from 1996 although blades strongly decreased in number and no longer colonized the bases of living corals as observed in 1980's.

Likewise, *Turbinaria ornata* that was invading the subtidal substrates, strongly decreased from 1995. By contrast, throughout French Polynesia, Payri and Stiger (2001) reported that the range of *Turbinaria ornata* increased markedly since the 1980's to become invasive, on some Tahiti and Moorea reef flats (Andrefouët *et al.*, 2004).

Nevertheless, although macroalgae are reported to increase in many areas, Bruno *et al.*'s review (2009) indicated that the replacement of corals by macroalgae as the dominant functional group is less common and less geographically extensive than generally assumed.



Photograph 1. 1987, Planch' Alizés (Site-P), L-zone. Large strip of *Montipora circumvallata* shrouded by the red alga, *Gracilaria canaliculata* (photography: O. Naim).



Photograph 2. 2009, Planch' Alizés (Site-P), L-zone. Large strip of the still dominant *Montipora circumvallata* (Naim *et al.*, 2013). Macroalgae are rare, except *Turbinaria ornata* occurring on upper subtidal dead substrates in April-May (photography: B. Cauvin).

Species richness

Comparison of species richness in the Mascarenes. In Reunion, in her exhaustive study of algae (excluding Cyanophytes), Payri (1985) recorded 156 species of which 146 species occurred on coral reefs, and 87 living on the *Saint-Gilles La Saline* reef flat. In Mauritius, Jagtap (1993) recorded 127 species on 18 sites (**Table 5**).

Table 5: Comparison of species richness in different studies

	This paper (survey 3)			Payri (1985)	Jagtap (1993)
	T	P	T+ P	<i>St-Gilles la Saline Reef</i>	Mauritius (18 sites)
Cyanophyta	4	4	4	unknown	5
Chlorophyta	14	24	26	36	34
Ochrophyta(Phaeophyceae)	8	8	8	13	20
Rhodophyta	26	31	36	38	68
TOTAL	52	67	76	87	127

In this paper (survey 3), 76 species were recorded on Site-T and Site-P, from only 6 stations 50 m x 2 m, indicating that almost 85% of the species were found compared to the Payri's inventory. In the survey, *Caulerpa* was only observed on both sites (8 species and subspecies present on the reef) but not recorded on LITs. Similarly, *Halimeda*, a dominant genus in the Indo-Pacific, was not recorded at either Site-T or Site-P, as the genus occurs rarely on Reunion reef flats, except on narrow reef flats and platforms (exposed conditions).

Despite an abundance 10 times higher at Site-P (LITs), the species richness and diversity appears to be similar at both sites when measured at higher resolution (infracentimetric). However, this diversity is calculated from the occurrence of species in the quadrats and not from their respective abundance. This finding seems consistent with the fact that there was roughly the same pool of species at both sites, with abiotic conditions (low/high nutrient concentrations), biotic (high/ low sea urchin or fish grazing) and metabolic conditions (autotrophy/ heterotrophy) shaping each algal community.

Different results from different methods. Algal dominance depends greatly on the sampling method. In PL subzone for example, the measurements in study 1, using the LITs method (≥ 1 cm level) and those in study 3, based on a higher (infracentimetric) resolution, were performed at exactly the same location (permanent transect), but the LITs approach showed that beds of large brown algae dominated while the second approach showed that two Cyanophyta, *Lyngbya majuscula* and *Blennothrix cantharidosma*, and two Melobesiae were the dominant species. These four species mostly occurred in patches of less than 1cm in width and thus, were largely underestimated by the LIT method. Similarly, in the TL and TN subzones, *Hydrolithon onkodes* and *Lobophora variegata* occurred in very small patches (of less than 1cm in width) as a result of heavy grazing. Both species were under-represented by LITs, although they were dominant at the infracentimetric level. In the same way, at Site-P, among Cyanophytes, mats of *Lyngbya majuscula* located in corals were hardly measured by LIT, while flat mats of *Schizothrix calcicola* were more readily quantified.

LITs measurements showed two different algal communities occurring at Sites T and P, in relation to both abundance and composition of species. By contrast, the results based on the higher resolution approach showed that the algal community is best explained by reef physiography than by ecological differences between Sites T and P.

Now, in order to increase the efficiency of monitoring, photographic and video methods are frequently used: the Coral Point Count with Excel extensions (CPCe)

(Kohler & Gill, 2006) appears to be the future of the “infracentimetric approach of the reef”, all organisms included. It has been used in Reunion to estimate the initial state in the Marine Reserve (Bruggemann *et al.*, 2007). Nevertheless, despite its great interest, this method remains time-consuming and thus, cannot be used for analyzing large areas: it therefore is one of the best complementary methods to the LIT-one.

Herbivory, nutrients and the benthic primary producer community

Herbivory. Structure, species diversity and biomass of algal communities are known to be controlled by herbivorous organisms (Ogden & Lobel, 1978; Hay *et al.*, 1983; Lewis and Wainwright, 1985; Lewis, 1986) and reduction of grazing by herbivores is known to unbalance the community (McCook, 1999). In 1983-1984, in the Caribbean, immediately following the mass mortality of *Diadema antillarum*, algal biomass increased on reefs where the sea urchin was dominant. The scientists who witnessed the die-off throughout the Caribbean have provided a data-rich literature on the immediate and longer-term response of algae (Lessios, 1988, review). Despite the increase in abundance and grazing by herbivorous fishes on reefs where *D. antillarum* died, the algal community continued to increase in coverage and biomass, indicating that grazing by fish did not compensate for the loss of grazing by the sea-urchin in controlling algal abundance (Carpenter, 1990). In Hawaii, Jones (1968) noted that, despite 160 genera of algae available to Acanthuridae (herbivorous fish), only 20% were found in the fish stomachs, suggesting that many algae may be unpalatable or repellent. Moreover, Littler and Littler (1985) thought that herbivory exerted much more control over the relative dominance of coral and algae than do nutrient levels, and Steneck (1988) showed that macroalgal assemblages can only sustain themselves with reduced pressure of herbivory. In Kaneohe Bay, following the diversion of most of the sewage effluent in 1977-1978, it was expected that *D. cavernosa* growth would become nutrient-limited and its abundance would consequently decline, but the alga remained abundant. Stimson *et al.* (2001), by measuring the grazing intensity and by surveys of herbivorous fish abundance, suggested that the continued abundance of *D. cavernosa* was, in part, the result of a reduction in grazing intensity.

At Site-T, the primary producer coverage remained below 10% while the density of sea urchins increased significantly from 40 ind. per 10 m² in 1993 to 90 ind. per 10 m² in 2002 (Tourrand *et al.*, 2013). At Site-P, sea urchins were rare in the back reef (<1 ind. per 10 m²), and totally absent in the coral zone. At both sites, *Echinometra mathaei* was and still is the dominant sea urchin (Tourrand *et al.*, 2013). *Tripneustes gratilla* was locally present (Semple, 1997; Lison de Loma *et al.*, 2002). Diadematidae were and still are rare (in 2013) at Site-T (except *Echinothrix diadema* on the reef front and the upper spur and groove section, not studied here) and were and still are (in 2013) totally absent at Site-P. As herbivorous fish are numerous on both sites (Letourneur, 1992; Chabanet, 1994, **Table 6**), the high biomass of soft macroalgae outcompeting living corals in the 1980's at Site-P can be attributed in part to echinoid undergrazing. Yet, from 1993 to 2002, at Site-P, the primary producer coverage decreased but the echinoid density did not change. This may indicate that nutrient availability for algae decreased through these ten years.

Although Sammarco (1982) considered sea urchin grazing to be one of the structuring forces in coral reefs, algal blooms are also particularly pronounced on reefs that have low stocks of herbivorous fish (Lessios, 1988). Comparing species of

fish at Sites T and P, Chabanet *et al.* (1997) showed that, among Acanthuridae, the unicorn tang, *Naso unicornis*, was more abundant at Site-P while *Ctenochaetus striatus* and *Zebrasoma scopas* were more abundant at Site-T. In the 1980's, *Naso unicornis*, which are constant feeders, were very active at dawn, as schools of about ten individuals on the P coral zone and were observed particularly feeding on *Gracilaria caniculata* thalli (Naim, pers. obs.). On the Great Barrier Reef, Hoey and Bellwood (2011) found that the grazers, in contrast to the browsers (like *Naso unicornis*), consistently stayed away from the patches with high macroalgal density. The authors hypothesise that the grazers could avoid the dense macroalgae patches because of a higher density of predators within or because the large algal stands are simply more unpalatable.

Nutrient loading at both sites. Smith *et al.* (1981) in Kaneohe Bay and Lapointe *et al.* (1997) in Florida showed that large shifts in community structure may occur as a result of nutrient loading. In 1996, Mioche (1998) showed that ACR communities had an autotrophic functioning at the *inflow sites*, “Toboggan” (Site-T) and “Petit Trou d'eau”, while MAS community had a heterotrophic regime at the *outflow sites*, “Planch'Alizés” (Site-P), and “Club Med” (Mioche *et al.*, 2002). Mioche & Cuet (2002) regarded then MAS as an altered stage of ACR in a nutrient-enriched environment. The increase of biomass of primary producers, especially of macroalgae, as well as productivity, may negatively impact stenoeccious organisms, such as *Acropora* as well as the sea urchins, *Echinometra mathaei* and the Diadematidae, *Diadema spp* and *Echinothrix diadema*, by exposing them to elevated respiration rates, these genera and/or species being rare or completely absent in MAS (Semple, 1997; Tourrand *et al.*, 2013). **Table 6** gives the dominant facies at both sites in the 1980's, when the primary producers were the lowest at Site-T and the highest at Site-P.

Table 6. The 1985-1990 period: some differences in ACR and MAS community structures (primary producers, metabolism, nutrients, and herbivory pressure) during the hot season.

	ACR community (Site-T)	MAS community (Site-P)
Primary producers	Inconspicuous coverage	80% of the coverage.
Cyanophytes	They occur in small blooms, no perennial species.	They occur in large blooms and can be invasive during summer (<i>Schizothrix calcicola</i>). Some of them, such as <i>Lyngbya majuscula</i> , are perennial.
Turfs	Dominant	Dominant with macroalgae
Encrusting corallines	They occur in c. 1cm large patches (heavily grazed).	In back reef, digitated ones encrust dead substrates and rubble (forming rhodoliths). In the coral zone, encrusting forms expand as large patches over subtidal dead substrates, and are often hidden by macroalgae. Digitated ones are abundant on dead coral walls.
Macroalgae	Inconspicuous except a few species that occur in large and ephemeral blooms (<i>Hydroclathrus clathratus</i> , <i>Boodlea composita</i>). Abundant encrusting <i>Lobophora variegata</i> occurs in c. 1cm large patches.	Numbered species form pluridecimeteric mats (<i>Dictyota spp</i> , <i>Gracilaria canaliculata</i> (= <i>G. crassa</i>), <i>Padina spp</i> , <i>Turbinaria ornata</i>). <i>Gracilaria canaliculata</i> is perennial. <i>Lobophora variegata</i> forms large crusts with blades.
	<u>Biomass, TN: max. dry weight: 38 g.m⁻²</u>	<u>Biomass, PN: max. dry weight: 267 g.m⁻²</u>

		(in Kaneohe Bay, sector CE -the worst: max. dry weight 292 g.m ⁻² , Smith <i>et al.</i> , 1981)
Metabolism	Oligotrophic (Mioche, 1998)	Heterotrophic (Mioche, 1998)
Silicium (SiO ₂)	at low tide SiO ₂ < 5 μM (Cuet, 1989b)	at low tide 10 μM < SiO ₂ < 50 μM (Cuet, 1989b)
Nitrates (NO ₃ ⁻)	back reef water concentrations: 0.73 ± 0.62 μM (Cuet, 1989b)	back reef water concentrations: 3.23 ± 1.93 μM (Cuet, 1989b)
	threshold below 1.3 μM NO ₃ ⁻ (Naim & Cuet, 2002)	threshold higher than 3.5 μM NO ₃ ⁻ (Naim & Cuet, 2002)
C:N in back reef sediment	C:N: 3.7 ± 0.5 and 7.5 ± 1.0; (Kolasinski <i>et al.</i> , 2011) (Site-Petit trou d'eau)	C:N: 11.7 ± 3.8 and 15.6 ± 2.5; (Kolasinski <i>et al.</i> , 2011)
Sea urchins	Very abundant (> 40 ind. per 10 m ²).	Almost absent (< 1 ind. per 10 m ²)
Herbivorous fish	summer: 13.5 ± 2.2 herbivores per 100 m ² winter: 14.7 ± 1.8 herbivores per 100 m ² (Letourneur, 1992)	summer: 14.1 ± 2.2 herbivores per 100 m ² winter: 15.8 ± 1.8 herbivores per 100 m ² (Letourneur, 1992)

The nutrient-threshold hypothesis (Bell, 1992; Lapointe, 1997) predicts that coral reefs will experience macroalgal blooms at nutrient concentrations above a threshold level of 1.0 M dissolved inorganic nitrogen (DIN).

At *Saint-Gilles La Saline*, in 1988, monthly water sampling of back reef waters during one year showed also that nitrate was significantly higher ($p < 0.0001$) at Site-P than at Site-T (Cuet, 1989b, **table 6**). Moreover, water samples were taken in 1988 at low tide on the 9-km long *Saint-Gilles La Saline* reef at the end of the rainy season, and the reef communities were concomitantly analyzed by LITs and classified as “pure” ACR, “pure” MAS or intermediary (cartography of samples is in Cuet *et al.*, 1988 and Naim 2006). Naim & Cuet (2002) showed then that, in the back-reef zone, in a silicate-nitrate diagram, all the “pure” ACR-LITs registered below 1.3 μM NO₃⁻, and all the “pure” MAS-LITs registered above 3.5 μM NO₃⁻. Therefore, the back-reef occurrence of ACR or MAS communities appeared to be correlated with the NO₃⁻ concentrations. No such clear relationship could be demonstrated in the coral zone, nor in a silicate-phosphorus ordination.

Therefore, in Reunion, « pure » ACR community appears to turn gradually into « pure » MAS community when NO₃⁻ concentration increases from 1 to 3 μM in the back reef, and the threshold of 1.3 μM per litre of nitrate for healthy communities is roughly the same as that suggested by Bell (1992) and Lapointe (1997).

More recently, in August 2006 and March 2007 respectively, Kolasinski *et al.* (2011) showed that, on Site-P, back reef and inner coral zone are characterized by a very high contribution of benthic detritus. This was particularly evident on the back reef where the sediment particulate organic matter (SOM) reservoir showed the most elevated C:N ratios analyzed on the *La Saline* reef (**Table 6**).

Site-T and site-P in the Relative Dominance Model (RDM, *sensu* Littler and Littler, 1984). There has been an exhaustive debate over the ecological factors regulating coral reef community structure (Littler *et al.*, 2006, 2009 and many others).

As argued by Hughes *et al.* (1999), a reef community cannot be structured only by the influence of nutrient-loading. The competition-based Relative Dominance Model (RDM) (Fig. 7 from Littler and Littler, 1984, 2006) is a comprehensive model predicting the dominant group of autotrophs in coral reef communities as a function of "top-down" regulation by herbivores and "bottom-up" control by nutrient-availability. Based on the Relative Dominance Model, the algal composition and the abundance of sea urchin (and thus, as part of the grazing pressure) recorded in both previous and ongoing studies, Site-T in 1987 (T1987, fig.7) can be thought to have experienced a low nutrient input, since it exhibits inconspicuous primary producers and a high sea-urchin grazing pressure (Tourrand *et al.*, 2013). Similarly, Site-P in 1985 (P1985, fig.7), devoid of sea-urchins, is interpreted as having suffered a high nutrient level, since it was dominated by frondose macroalgae which were overgrowing living corals during the hot season. In 1993, as the macroalgal pressure decreased, and sea-urchins still were almost lacking, the nutrient-level is considered to have decreased. In 1995, the disappearance of *Gracilaria caniculata* clearly reflects improved environmental conditions, and in 2002, the strong regression of macroalgal cover signals an actual drop in nutrient concentration.

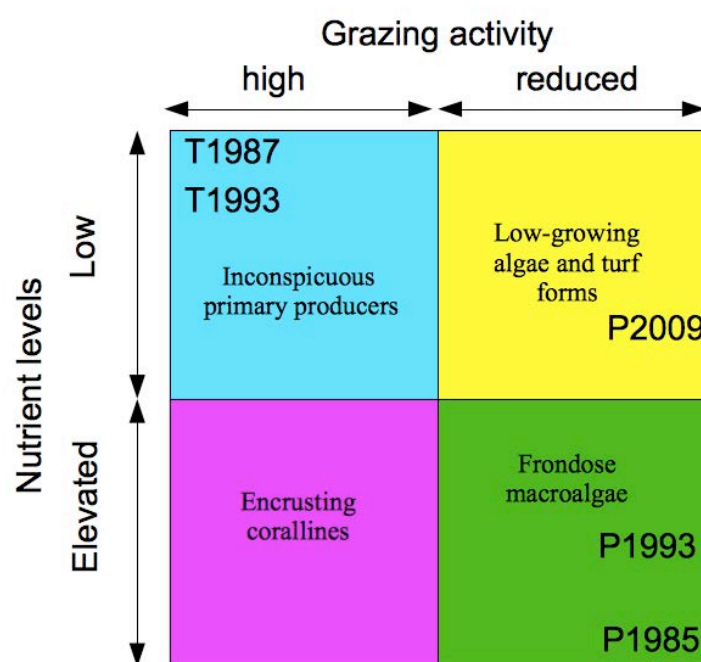


Figure 7: The competition-based Relative Dominance Model (RDM) modified from Littler and Littler (1984, 2006). T= Site-“Toboggan”; P= site-“Planch’Alizés ») years are given according to quantitative data recorded on the two sites.

Over the 2004-2009 period, the reef communities from both Sites T and P shifted to become turf-dominated with an increase of encrusting corallines at Site-P. At Site-T, the increase in turf density is not accompanied by an increase in encrusting coralline coverage. According to the RDM, it would not indicate a higher nutrient-level, but can be much more related to an increasing stress of *Acropora* (bleaching events). At Site-P, by contrast, the shift from a state dominated by macroalgae (P1985 and P1993) to a state dominated by turfs (P2009) indicates that, according to the

RDM, the reef flat today experiences a lower nutrient level. As nutrient-enrichment is less evident presently (Cuet *et al.*, 2006), further studies are conducted currently.

Interaction between abiotic and biotic factors. In summary, on the *Saint-Gilles La Saline* reef, compared to ACR at Site-T, MAS observed at Site-P, appears to be the result of a higher chronic variability of abiotic factors, such as a higher temperature (Denis *et al.*, 2009), a lower salinity, a higher and variable silicate amount during low tides and a variable nutrient enrichment *via* submarine groundwater discharge (**Table 6**, Cuet, 1989b), an enrichment in organic matter of the reef waters as they flow across the subtidal communities (Conand *et al.*, 2002; Kolasinski *et al.*, 2011), a lack of dissolved oxygen at the end of the night (heterotrophy) (Mioche, 1998), and the occurrence of potential toxic elements (due notably to the abundance of the cyanophyte *Lyngbya majuscula*). Similarly, biotic factors may control in part the composition of MAS. These factors include undergrazing by sea urchins, avoidance of unpalatable macroalgae by herbivorous fish and intense competition between living corals and a variety of algae. In 1980's, the algal competitors included either Cyanophytes, turfs, soft macroalgae or encrusting corallines (Naim, 1993), while Cyanophytes and turfs operate today. In addition, the fish *Stegastes nigricans* acts as a control from enriching more significantly its immediate environment at Site-P than at Site-T (Lison de Loma, 2000). All factors interact in an extremely complex way.

Intimate coexistence between living corals and primary producers. MAS is also a community where massive corals and primary producers coexist from 1980's. From 1987 to 2009, the primary producer and the massive living coral coverages never dropped below 40% and 30% respectively (Tourrand *et al.*, 2013, **fig. 5**, PL-subzone, average, summer data). This coexistence, especially when macroalgae were overgrowing corals in 1980's, may be explained by the "breathing" of corals during the dry season (from April to November), when the algae are washed away by powerful swells (Naim, 1993) and the freshwater inflows are reduced (Cuet, 1989b). Thus, MAS appears to be also the result of a seasonal alternation, a hot season where algae are taking over, and a cold season where corals can recover. In this type of community, the seasonal rhythm requires further analysis than in a healthy coral community, due to the intimate competition between benthic primary producers and living corals.

CONCLUSION

In the 1970's, the reef flats in Reunion displayed flourishing branching corals. During the decade 1980-90, Site-T retained its prosperous branching structure with inconspicuous primary producers while Site-P was altered by a phase shift leading to massive corals and macroalgae. This study showed that, between 1996 and 2002, another phase shift occurred at the two studied sites. Site-P has lost its frondose macroalgae while Site-T lost its «inconspicuous primary producer» state, and both T and P primary producer communities have shifted to a turf controlled community. As sea urchin herbivory has not greatly changed at either site, «bottom-up control» *via* nutrient enrichment may be one of the suspected causal factors. The sewage treatment may be responsible for the macroalgae disappearance at Site-P, and the diversion of water from east to west in Reunion leads to the accumulation of freshwater on the Ermitage watershed, and this may be one of the factors resulting in degradation at Site-T. In 2007, the creation of the Marine Reserve, which placed the T-coral zone

into the sanctuary, may allow a better understanding of the functioning of this process.

ACKNOWLEDGMENTS

We thank M. Daniel CHOUSSY for his assistance during fieldwork. We also thank Pr Terence J. DONE for rereading this paper. This project was funded by the « programme quadriennal laboratoire ECOMAR, université de la Reunion, Région Reunion » and the « Ministère de l'Enseignement Supérieur et de la Recherche (MESR) ».

REFERENCES

- Andrefouët, S., M. Zubia and C.E. Payri
2004. Mapping and biomass estimation of the invasive brown algae *Turbinaria ornata* (Turner) J. Agardh and *Sargassum mangarevense* (Grunow) Setchell on heterogeneous Tahitian coral reefs using 4-meter IKONOS satellite data. *Coral reefs* 23: 26-38.
- Banner, A.H.
1974. Kaneohe Bay, Hawaii: urban pollution and a coral reef ecosystem. *Proceedings of the 2nd International Coral Reef Symposium*, Brisbane, Australia 2: 685-702.
- Baravetza, M.A. and A.W.D. Larkum
1986. Reef algae. *Oceanus* 29: 49-54.
- Bell, P.R.F.
1992. Eutrophication and coral reefs: some examples in the Great Barrier reef lagoon. *Water research* 26: 553-558.
- Benayahu, Y. and Y. Loya
1977. Seasonal occurrence of benthic algae communities and grazing regulation by sea urchins at the coral reefs of Eilat, Red Sea. *Proceedings of the 3rd International Coral Reef Symposium*, Miami, Florida 1: 383-389.
- Berner, T.
1990. Coral reef algae. *In: Ecosystems of the world* 25 (Dubinsky, Z. ed.): Pp. 253-263.
- Bird, K.T., C. Habig and T. De Busk
1982. Nitrogen allocation and storage patterns in *Gracilaria tikvahiae* (Rhodophyta). *Journal of Phycology* 18: 344-348.
- Bruno, J.F., H. Sweatman, W.F. Precht, E.R. Selig and V.G.W. Schutte
2009. Assessing evidence of phase shifts from coral to macroalgal dominance on coral reefs. *Ecology* 90(6): 1478-1484.
- Burris, R.H.
1976. Nitrogen fixation by blue-green algae of the Lizard Island area of the Great Barrier Reef. *Australian Journal of Plant Physiology* 3: 41-51.
- Carpenter, R.
1990. Mass mortality of *Diadema antillarum* II. Effects on population densities and grazing intensity of parrotfishes and surgeonfishes. *Marine Biology* 104: 79-86.
- Chabanet, P.
1994. *Étude des relations entre les peuplements coralliens et les peuplements ichtyologiques sur le complexe récifal de Saint-Gilles La Saline*. Doct. spéc. Environnement marin, Univ. Aix-Marseille III., France, 200 pp.
- Chabanet, P., V. Dufour and R. Galzin
1995. Disturbance impact on reef fish communities in Reunion Island (Indian Ocean). *Journal of Experimental Marine Biology and Ecology*, 188 : 29-48.
- Chazottes, V., T. Le Campion-Alsumard, M. Peyrot-Clausade and P. Cuet
2002. The effects of eutrophication-related alterations to coral reef communities on agents and rates of bioerosion. *Coral reefs*, 21: 375-390.

- Clarke, K.R. and R.M. Warwick
 2001. *Change in marine communities: an approach to statistical analysis and interpretation*. 2nd edn, PRIMER-E Ltd, Plymouth.
- Conand, C., P. Cuet, O. Naim and D. Mioche
 2002. Des coraux sous surveillance. *Pour la Science*, 298: 75-81.
- Cuet, P.
 1989a. *Les platiers récifaux de l'île de la Réunion. Physico-chimie des eaux*. Rapport Univ. Réunion (Lab.Ecol.Mar) - Agence Urbanisme Réunion, 151 pp.
 1989b. *Influence des résurgences d'eau douce sur les caractéristiques physico-chimiques et métaboliques de l'écosystème récifal à La Réunion*. Doctorat de spécialité en Environnement marin, Univ. Aix-Marseille III, France, 204 pp.
- Cuet, P., O. Naim, G.F. Faure and J.-Y. Conan
 1988. Nutrient-rich groundwater impact on benthic communities of la Saline fringing reef (Reunion Island, Indian Ocean): preliminary results. *Proceedings of the 6th International Coral reef Symposium*, Townsville, Australia 2: 207-212.
- Cuet, P., J. Turquet and J.F. Chiffolleau
 2006. *Phase pilote d'extension du RNO à la Réunion. Résultats des trois années de suivi (2002-2005)*. Rapport Université de la Réunion, ARVAM, IFREMER, DIREN Réunion, 93 pp.
- Delgado, O and B. E. Lapointe
 1994. Nutrient-limited productivity of calcareous versus fleshy macroalgae in a eutrophic, carbonate-rich tropical marine environment. *Coral Reefs* 13:151-159.
- Denis, V., S. De Palmas, J. Debreuil, H. Bruggemann and M.M.M. Guillaume
 2009. Resisting climate change: phenotypic plasticity and environmental imprints in *Acropora muricata* from Reunion island. *Proceedings of the 6th Western Indian Ocean Marine Science Association (WIOMSA) Scientific Symposium*, St-Denis, La Réunion, p. 89.
- Hatcher, B.G. and A.W.D. Larkum
 1983. An experimental analysis of factors controlling the standing crop of the epilithic algal community on a coral reef. *Journal of Experimental Marine Biology and Ecology* 69: 61-84.
- Hay M.E., T. Colburn and D. Downing
 1983. Spatial and temporal patterns of herbivory on a Caribbean fringing reef: The effects on plant distributions. *Oecologia* (Berlin) 58:299-308.
- Hoey, A.S. and D.R. Bellwood
 2011. Suppression of herbivory by macroalgal density: a critical feedback on coral reefs? *Ecology Letters* 14, pp. 267–273.
- Hughes, T., A.M. Smant, R. Steneck, R. Carpenter and S. Miller
 1999. Algal blooms in coral reefs: what are the causes? *Limnology and Oceanography* 44: 1583-1586.
- Jagtap, T.G.
 1993. Studies on littoral and sublittoral macrophytes around the Mauritius coast. *Atoll Research Bulletin* 382: 21 p.
- Jones, R.S.
 1968 Ecological relationships in Hawaiian and Johnston island Acanthuridae (Surgeonfishes). *Micronesica* 4: 369-371.
- Kohler, K.E. and S.M. Gill
 2006. Coral Point Count with Excel extensions (CPCe): a visual basic program for the determination of coral and substrate coverage using random point count methodology. *Computers & Geosciences* 32: 1259-1269. <http://www.nova.edu/ocean/cpce/>
- Kolasinski, J., K. Rogers, P. Cuet, B. Barry and P. Frouin
 2011. Sources of particulate organic matter at ecosystem scale: a stable isotope and trace element study in a coral reef (Reunion island, Indian Ocean). *Marine Ecology Progress Series* 443: 77-93.
- Lapointe, B.E.
 1997. Nutrient thresholds for bottom-up control of macro-algal blooms on coral reefs in Jamaica and southeast Florida. *Limnology and Oceanography* 42: 1119-1131.

- Lapointe B.E., M.M. Littler and D.S. Littler
 1997. Macroalgal overgrowth of fringing coral reefs at Discovery Bay, Jamaica: bottom-up *versus* top-down control. *Proceedings of the 8th International Coral Reef Symposium*, Smithsonian Tropical Research Institute, Panama 1: 927-932.
- Lessios, H. A.
 1988. Mass mortality of *Diadema antillarum* in the Caribbean: What have we learned? *Annual Review of Ecological Systems* 19: 371-393.
- Letourneur, Y.
 1992. *Dynamique des peuplements ichthyologiques des platiers récifaux de l'île de la Réunion*. Doctorat de Spécialité en Océanologie, Université Perpignan-Réunion, France, 244 pp.
- Letourneur Y., M.L. Harmelin-Vivien and R. Galzin
 1993. Impact of hurricane Firinga on fish community structure on fringing reefs of Reunion Island, S.W. Indian Ocean. *Environmental Biology of Fishes* 37: 109-120.
- Lewis S.M.
 1986. The role of herbivorous fishes in the organization of a Caribbean reef community. *Ecological Monographs* 56: 183-200.
- Lewis S.M. and P.C. Wainwright
 1985. Herbivore abundance and grazing intensity on a Caribbean coral reef. *Journal of Experimental Marine Biology and Ecology* 87: 215-228.
- Lison de Loma, T.
 2000. Algal food processing by *Stegastes nigricans*, an herbivorous damselfish: differences between an undisturbed and a disturbed coral reef site (La Réunion, Indian Ocean). *Oceanologica acta*, 23 (7), 793-804.
- Lison de Loma, T. and E. Ballesteros
 2002. Microspatial variability inside epilithic algal communities within territories of the damselfish *Stegastes nigricans* at La Réunion (Indian Ocean). *Botanica Marina* 45 (4), 316-323.
- Lison de Loma, T., C. Conand, M.L. Harmelin-Vivien and E. Ballesteros
 2002. Food selectivity of *Tripneustes gratilla* (L.) (Echinodermata: Echinoidea) in oligotrophic and nutrient-enriched coral reefs at La Reunion (Indian Ocean). *Bulletin of Marine Sciences* 70, 927-938.
- Littler, M.M. and D.S. Littler
 1984. Models of tropical reef biogenesis: the contribution of algae. In: *Progress in Phycological Research* (Round, F.E., Chapman, D.J., eds), Biopress, Bristol, vol. 3, pp. 323-364.
 1985. Factors controlling relative dominance of primary producers on biotic reefs. *Proceedings of the 5th International Coral reef Symposium*, Tahiti, Polynésie française, 4: 35-39.
 2006. Assessment of coral reefs using herbivory/.nutrient assays and indicator groups of primary producers: a critical synthesis, proposed protocols and critique of management strategies. *Aquatic Conservation: Marine and Freshwater ecosystems* 17(2): 195-215.
- Littler, M.M., D.S. Littler and B.L. Brooks
 2006. Harmful algae on tropical reefs: bottom-up eutrophication and top-down herbivory. *Harmful algae* 5 (5): 565-585.
 2009. Herbivory, nutrients, stochastic events, and relative dominances of benthic indicator groups on coral reefs: a review and recommendations. *Smithsonian Contributions to the Marine Sciences* 38: 401-414.
- McCook, L.J.
 1999. Macroalgae, nutrients and phase shifts on coral reefs: scientific issues and management consequences for the Great Barrier Reef. *Coral Reefs* 18: 357-367.
- Miller, M.W., M.E. Hay, S.L. Miller, D. Malone, E.E. Sotka and A.M. Szmant
 1999. Effects of nutrients versus herbivores on reef algae : a new method for manipulating nutrients on coral reefs. *Limnology and Oceanography* 44 (8) : 1847-1861.
- Mioche, D.

1998. *Aspects du cycle de la matière sur les récifs frangeants de l'île de la Réunion (Océan Indien) : signature des dégradations et mécanismes de l'eutrophisation*. Doctorat de Spécialité en Écologie marine, Université Réunion, 292pp.
- Mioche, D. and P. Cuet
2002. Community metabolism on the reef flats at Reunion (Indian Ocean): natural versus anthropogenic disturbance. *Proceedings of the 9th International Coral reef Symposium*, Bali, Indonesia 1: 431-436.
- Mioche, D., R. Troadec, N. Germain, C. Esbelin, C. Tourrand, M. Psaradellis, O. Naim and J. Coudray
2002. Relations entre l'équilibre sédimentaire des plages, la structure des communautés et le budget des carbonates dans l'écosystème corallien de la Réunion. *The Journal of Nature (Reunion)*, 14(1): 35-43.
- Morrow, K.M., V.J. Paul, M.R. Liles and N.E. Chadwick
2011. Allelochemicals produced by Caribbean macroalgae. *Coral reefs* 30 (2): 309-320.
- Naim, O.
1989. *Les platiers récifaux de l'île de la Réunion. Géomorphologie et état de santé des peuplements benthiques*. Rapport Université Réunion (Laboratoire d'Ecologie Marine) - Agence Urbanisme Réunion, 151 pp.
1993. Seasonal responses of a fringing reef community to eutrophication (Reunion Island, Western Indian Ocean). *Marine Ecology Progress Series* 99: 307-315.
2006. The coral reef communities at *Saint-Gilles La Saline* in 1987 (Reunion Isl., S.W. Indian Ocean). *The Journal of Nature (Reunion)*, 18(1): 13-31.
- Naim, O. and P. Cuet
2002. Benthic community structure versus nitrate input at Reunion (SW Indian ocean). *Proceedings of the 9th International Coral reef Symposium*, Bali, Indonesia, summary
- Naim, O., C. Tourrand, G.F. Faure, L. Bigot, B. Cauvin, S. Semple and L.F. Montaggioni
2013. Fringing reefs of Reunion island and eutrophication effects. Part 3: Long-term monitoring of living corals. *Atoll Research Bulletin*, 598: 32 p.
- Nelson, S.G.
1985. Immediate enhancement of photosynthesis by coral macrophytes in response to ammonia enrichment. *Proceedings of the 5th International Coral reef Symposium* 5: 65-70.
- Nugues, M.M. and R.P.M. Bak
2006. Differential competitive abilities between Caribbean coral species and a brown alga: a year of experiments and a long-term perspective. *Marine Ecology Progress Series* 315: 75-86.
- Ogden, J.C. and P.S. Lobel
1978. The role of herbivorous fishes and urchins in coral reef communities. *Environmental Biology of Fishes* 3 (1): 49-63.
- Payri, C.E.
1985. Contribution to the knowledge of the marine benthic flora of la Reunion island (Mascarene archipelago, Indian ocean). *Proceedings of the 5th International Coral reef Symposium*, Tahiti, Polynésie française 6: 635-640.
- Payri, C.E. and O. Naim
1982. Variations entre 1971 and 1980 de la biomasse et de la composition des populations de macroalgues sur le récif corallien de Tiahura (île de Moorea, Polynésie française). *Cryptogamie: Algologie*, III (3): 229-240.
- Payri, C.E. and V. Stiger
2001. Macroalgal community changes on French Polynesian reefs, 1980-2000. *Phycologia*, 40 (4): 111.
- Potts, M. and B.A. Whitton
1977. Nitrogen fixation by blue-green algal communities in the intertidal zone of the lagoon of Aldabra atoll. *Oecologia* 27: 275-283.
- Risk, M., P.W. Sammarco, O. Naim and H. Schwarcz
1989. Stable isotopes of carbon and nitrogen in environmental studies on reefs: some preliminary results from Australia and Reunion. *International Society for Reef Studies*, annual meeting, Marseille, France, abstract

- Ryther, J.H., N. Corwin, T.A. De Busk and L.D. Williams
 1981. Nitrogen uptake and storage by the red alga *Gracilaria tikvahiae* (McLachlan 1979).
Aquaculture 26: 107-115
- Sammarco, P.W.
 1982. Echinoid grazing as a structuring force in coral communities: whole reef manipulations.
Journal of Experimental Marine Biology and Ecology 61: 31-55.
- Semple, S.
 1997. The use of temporal variations in algal cover and biomass as a tool for the quantification of the degree of eutrophication of a fringing coral reef in Reunion Island, S.W. Indian Ocean.
Oceanologica Acta, 20 (6): 851-861.
- Smith, S.V., W.J. Kimmerer, E.A. Laws, R.E. Brock and T.W. Walsh
 1981. Kaneohe Bay sewage diversion experiment: perspectives on ecosystem responses to nutritional perturbation. *Pacific Science* 35 (4): 279-395.
- Steneck, R.S.
 1988. Herbivory on coral reefs: a synthesis. *Proceedings of the 6th International Coral reef Symposium*, Townsville, Australia 1: 37-49.
 1997. Crustose corallines, other algal functional groups, herbivores and sediments : complex interactions along reef productivity gradients. *Proceedings of the 8th International Coral reef Symposium*, Smithsonian Tropical Research Institute, Panama 1: 695-700.
- Steneck, R.S. and E.A. Sala
 2005. Large marine carnivores: trophic cascades and top-down controls in coastal ecosystems past and present. In: *Large Carnivores and the conservation of biodiversity* (eds Ray, J., Redford, K., Steneck, R.S., Berger. J.), Island Press, Pp. 110-137.
- Stimson, J., S. Larned and E. Conklin
 2001. Effects of herbivory, nutrient levels, and introduced algae on the distribution and abundance of the invasive macroalga *Dictyosphaeria cavernosa* in Kaneohe Bay, Hawaii. *Coral reefs* 19 (4): 343-357.
- Tourrand, C., O. Naim, L. Bigot, C. Cadet, B. Cauvin, S. Semple, L.F. Montaggioni, P. Chabanet and H. Bruggemann
 2013. Fringing reefs of Reunion island and eutrophication effects. Part 1: Long-term monitoring of two shallow coral reef communities. *Atoll Research Bulletin*, 596: 33p.
- Tsuda, R.T.
 1974. Seasonal aspects of the Guan Phaeophyta (brown algae). *Proceedings of the 2nd International Coral reef Symposium*, Great Barrier Reef, Australia 1: 43-47.
- Vermeij, †, M.J.A., M.L. Dailer, S.M. Walsh, M.K. Donovan and C.M. Smith
 2010. The effects of trophic interactions and spatial competition on algal community composition on Hawaiian coral reefs. *Marine Ecology* 31 (2) : 291-299.