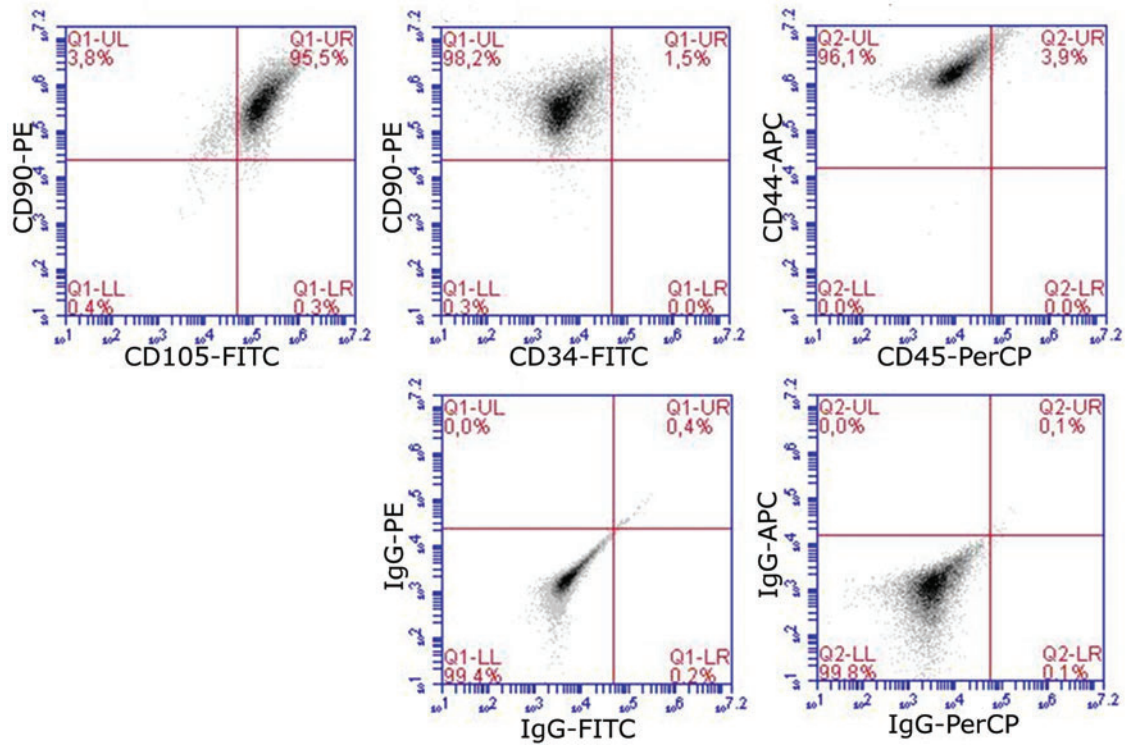


## Supplementary Data



**SUPPLEMENTARY FIG. S1.** Analysis of MSC surface antigen marker expressions in human AT-MSCs by flow cytometry. Cell suspensions were stained with specific mouse antihuman monoclonal antibodies as indicated in density plots. AT-MSCs were positive for CD105 (95.8%), CD90 (99.5%), and CD44 (100%) and negative for CD34 (1.5%) and CD45 (3.9%). AT-MSCs, adipose tissue-derived MSCs; MSC, mesenchymal stem cell.