



HAL
open science

Integrated design approach for solving complexity of design problem

Kusol Pimapunsri, Serge Tichkiewitch

► **To cite this version:**

Kusol Pimapunsri, Serge Tichkiewitch. Integrated design approach for solving complexity of design problem. American Journal of Operations Research, 2013, 3 (1), pp.138-146. 10.4236/ajor.2012 . hal-00906095

HAL Id: hal-00906095

<https://hal.science/hal-00906095>

Submitted on 21 Nov 2013

HAL is a multi-disciplinary open access archive for the deposit and dissemination of scientific research documents, whether they are published or not. The documents may come from teaching and research institutions in France or abroad, or from public or private research centers.

L'archive ouverte pluridisciplinaire **HAL**, est destinée au dépôt et à la diffusion de documents scientifiques de niveau recherche, publiés ou non, émanant des établissements d'enseignement et de recherche français ou étrangers, des laboratoires publics ou privés.

Integrated Design Approach for Solving Complexity of Design Problem

“Special Issue”

Kusol Pimapunsri¹, Serge Tichkiewitch²

¹Department of Industrial Engineering, Faculty of Engineering, KMUTNB, Bangkok, Thailand

²G-SCOP laboratory, Grenoble Institute of Technology, Grenoble, France

Email: kusolp@kmutnb.ac.th

Received ***** 2011

Abstract

The engineering problems today become more and more complex particularly in the area of new product development. It requires the multi-disciplinary design method to solve complex problems. This paper presents an integrated design system for solving complexity during multi-disciplinary design. Complexity could be solved if the design problems, given by any individuals who are concerned, are structured. The design system uses the multi-viewpoint concept to allow experts to share their information and knowledge in common views. Knowledge modules are used to store semantics from the experts of different disciplines. Then the system agent acts as an internal designer to help support the individuals to translate any semantics provided from one discipline and then propagate to other related disciplines. With these tools, the integrated design system can structure and solve the complexity of design problems.

Keywords: Complexity, Integrated Design, Multi-Disciplinary

1. Introduction

The nature of design is complex. Archer [1] wrote that “Design is that area of human experience, skill and knowledge which is concerned with man’s ability to mould his environment to suit his material and spiritual needs.” Nevertheless, design that relies on trial-and-error processes or empiricism based on human experiences and skills seems not adequate to solve today complexity. These experiences and knowledge must be improved by systematical approaches. To solve the complexity in design, replacing the empirical approach with a more scientific approach is preferable.

As today demands of quality, cost, time, and sustainability increase; the complexity in design raises rapidly. However, complexity could be solved if the design problems are structured. It requires experts from various disciplines to construct the design problems by providing the information, constraints, and knowledge. Yet, the experts must work collaboratively as a cross-functional team. To avoid the inter-disciplinary problems of design language (semantics), the design system must help support the designers to realize design solutions, information

and constraints of each other.

This paper presents the integrated design system that is used to solve the complexity of multi-disciplinary design problems. Section 2 examines engineering design approaches that are used to deal with the design problems. The integrated design system follows those systematic approaches in order to construct an answer to the design problems. Section 3 presents the tools for solving the design problems by applying the concepts of ontology, multi-viewpoint, and knowledge management method. Section 4 presents a case study of furniture design using the integrate design system and a specific tool to solve the complexity of multi-disciplinary design. Finally, conclusion is given in Section 5.

2. Complexity in Engineering Design

In engineering design, it currently challenges designers to deliver the design that meet the customer’s requirements within a limited time and budget. This section reviews the development of engineering design approaches to represent how to construct the design problems and to solve the design complexity.

In a traditional design approach, designers work sequentially and independently on their tasks. It is considered as a time-consuming process. Then, Concurrent Engineering (CE) approach was introduced. It permits the designers to perform their tasks in parallel as a cross-functional team and to deal with design problems of multiple decisions. However, since the system complexity increases, a number of decision increases as well. Any flaw decision will lead the system much more complex. At this time, collaborative approach is predominant in engineering design. As experts from each discipline mostly focus on their own objective, one objective may conflict with one's others from different discipline. Collaborative engineering decreases space between design phases by increasing the degree of collaboration among individuals and teams with perspectives of negotiation and compromising to achieve a common goal.

Pahl *et al.* [2] state that 'complexity' is one of a problem's characteristic. Complexity is defined as many components are involved and these components, through links of different strength, influence each other. By complexity we mean that the transparency of the relationships between inputs and outputs is relatively poor, that the required physical processes are relatively intricate, and that the number of assemblies and components involved is relatively large. Lu and Suh [3] also states that complexity occurs in systems that have many elements with intricate dependencies among them. Due to their numerous sizes and relationships, the behaviors of complex systems are difficult to predict, even when the properties of their parts are given. Another characteristic of a problem is 'uncertainty'. Uncertainty occurs when not all requirements are known; not all criteria are established; the effect of a partial solution on the overall solution or on other partial solutions is not fully understood, or only emerges gradually. The difficulties become more pronounced if the characteristics of the problem area change with time [2].

A systematic approach for engineering design is proposed in [2] in order to decrease the complexity of a technical system. This approach is to divide a technical system into sub-systems and elements. Then develop an interrelationship of the elements and represent as a structure. A complex system can be broken down into sub-functions of lower complexity. The combination of individual sub-functions results in a 'function structure' representing the overall function of the technical system. Consequently, the divided sub-functions will be broken down into 'working structure' that represents its physical processes. It determines geometric and material characteristics chosen that ensure the function is fulfilled. A working interrelationship established in the working structure leading to the construction structure. The con-

struction structure takes into account the needs of production, assembly, transport, etc. It must satisfy the requirements of the selected working structure and any requirements necessary for the technical system. To fully identify these requirements, it is usually necessary to consider the system interrelationship. The overall interrelationship must be carefully considered during the development of the technical system. This approach can be summarized as shown in **Table 1**.

This approach decreases the complexity of a technical system by breaking down the system into elements. Then develop an interrelationship of the elements and represent as a structure of functions, working, and construction. Finally, combine those elements as a new system. This approach however does not indicate the dependency among elements (sub-functions and working principles) of the technical system. Therefore, it is quite difficult for the designer to recognize which design solutions have more or less complexity.

Quality Function Deployment (QFD) originated by Akao [4] is another well-known systematic approach for engineering product development. QFD helps support the designers to transform the voice of customer (customer needs) into engineering characteristics. It uses House of Quality (HOQ) diagram to represent a relationship matrix between WHATs (customer needs) and HOWs (how to satisfy the customer needs), a planning matrix, and a correlation matrix among HOWs. HOQ can be cascaded to get the information in different levels of the design process. It usually comprises of four levels: product planning, design deployment, process planning, and production operations planning. QFD method is intended to be used by cross-functional teams consisting of experts in several domains. As a result, QFD requires the significant resources to develop, populate, and analyze the results. A single design would require a large amount of time due to inter-disciplinary problems. In addition, lack of attention to the correlation matrix at the roof of the HOQ may lead the designers to waste amount of time in consequent cascades matrices. QFD indicates the correlation among HOWs. This correlation matrix conduces

Table 1. Interrelationship in technical systems [2].

Interrelationship	Elements	Structure
Functional interrelationship	Functions	Functions structure
Working interrelationship	Working principles	Working structure
Construction interrelationship	Components, Joints, Assemblies	Construction structure
System interrelationship	Artifacts, Human beings, Environment	System structure

the designers know which HOWs reinforce or conflict to others. However, it does not notify how to reduce the design conflicts (negative correlations) that usually lead the complexity of a technical system.

To overcome the design conflicts occurred during the design process, TRIZ methodology is introduced to enhance QFD [5, 6]. It provides a range of strategies and tools for finding inventive solutions that overcome the need for a trade-off between two HOWs. TRIZ however uses very abstract terms to express its theory and method and lacks math models and quantitative methodology to support its applications [7, 8].

Lately, Axiomatic Design (AD) theory is proposed by Suh [9]. AD is a system design methodology that helps designers to structure design problems and provides theorems for solving complexity of technical system. In AD, there are four domains: customer, functional, physical, and process. These domains are mapped to one another in order to create design details in hierarchies of each domain. The design details represent a relationship between WHATs (what we want to achieve) and HOWs (how we choose to satisfy the need). It systematically transforms customer needs (CAs) into functional requirements (FRs), design parameters (DPs), and process variables (PVs). This decomposition technique is called zigzagging method. This systematic approach is similar to QFD method. However, AD uses matrices to define the design details. In addition, AD can assess the complexity of the design by two axioms i.e. Independence Axiom and Information Axiom.

The first axiom is to maintain the independence of the FRs. It notices the relationship between WHATs and HOWs by a design matrix that can be mathematically expressed in term of characteristic vectors as follows:

$$\{FR\} = [A]\{DP\} \quad (1)$$

Where $\{FR\}$ represents a set of FRs, $\{DP\}$ represents a set of DPs, and $[A]$ is a set of characteristics of the design that represents the relation between FRs and DPs, called "design matrix". This design matrix implies the complexity of a system. A system can be either uncoupled design (diagonal matrix) or decoupled design (triangular matrix) or coupled design (full matrix) depending on the mutual dependencies of its elements in the design matrix. Thus, to maintain the independence of the FRs, the design matrix must be either diagonal or triangular. If the design matrix is not written in diagonal or triangular form, it must be reorganized as presented in [10-13].

The second axiom: Information Axiom is to minimize the information content of the design. A design is complex when its probability of success is low. In the other words, when the information content required to satisfy

the FRs is high. The probability of success is governed by the intersection of the design range (dr) specified by the FRs and the system range (sr) that is proposed to satisfy the specified range, called common range (cr). In this axiom, information content (I) is defined as a logarithm function of design's probability of achieving the specified FRs, area of common range (A_{cr}) that can be written as:

$$I = \log_2(1 / A_{cr}) \quad (2)$$

If the information content of the design is high, it leads the system to be complex. Suh describes the methods to minimize the information content of the design in his books [9, 10].

The systematic approach proposed by Pahl *et al.* [2] provides the designers the procedural steps to design a technical system. QFD helps support the designers who are an expert in different domain to design the system as cross-functional teams. However, a collaboration of experts in different disciplines can result in multi-disciplinary design complexity. AD helps the design team to recognize the complexity of the system and provides the systematic methodology to solve such complexity. The next section presents the design tools that are used to solve the complexity of multi-disciplinary design problems.

3. Integrated Tools for Solving Complexity of Multi-Disciplinary Design

The nature of complexity of multi-disciplinary design requires experts from various disciplines to work collaboratively as a cross-functional team. Thus the design approach must be applied with flexibility and consideration of the knowledge and terminology of the various disciplines involved. It also should be able to provide the experts their own view in order to provide any information and knowledge of the design and share to common views if necessary. This section describes the tools used in the multi-disciplinary design process.

3.1. Data Model and Knowledge Model

To represent a system or a product, data model and knowledge model [14] are used in the design process. The data model consists of three types of object i.e. component, link, and relation, as shown in **Figure 1**. By the data model, experts from any discipline can structure the design of a system by decomposing it in hierarchies. The data model is used to represent elements in the system. However, it must be associated with the knowledge model in order to identify the characteristics and behavior of the elements.

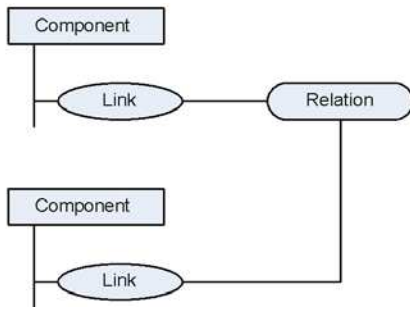


Figure 1. Data model.

Knowledge model allows the experts to define the elements created using their own semantics. It can be divided into two categories i.e. factual knowledge and temporal knowledge. Factual knowledge represents characteristics of 'feature' associated to a component object, as shown in Figure 2. A feature 'Shaft' is used to describe the product from geometric viewpoint. It is associated by the 'Link_1' (*rad_1*) to define that the characteristic 'radius' is in 'Equality' relation with another one. Values of characteristics of a feature can be affected by temporal knowledge represented by 'production rules' [15]. A production rule governs the translation of semantics between disciplines. The instantiation of feature depends on the signification of sharing i.e. vernacular, vehicular, and universal [16]. Knowledge model is created based on ontology and can be enriched by interactions between the experts from various disciplines.

3.2. Multi-Disciplinary Concept

The integrated design system consists of different viewpoints depending on the intended purpose (number of joined disciplines). Based on the data model and the knowledge model, the designers can decompose the product in hierarchies and describe it by their own semantics. However, to support the experts from various

Product Model	Knowledge Model
<p>Shaft: Shft_1</p> <ul style="list-style-type: none"> - radius (<i>rad_1</i>) - length - position - orientation - ... <p>Link_1</p> <ul style="list-style-type: none"> - radius (<i>rad_1</i>) <p>Equality</p> <ul style="list-style-type: none"> - var_1 (<i>rad_1</i>) - var_2 (<i>rad_2</i>) var_1 = var_2 <p>Relation_1</p>	<p>Shaft</p> <ul style="list-style-type: none"> - radius - length - position - orientation - ... <p>Equality</p> <ul style="list-style-type: none"> - var_1 - var_2 var_1 = var_2

Figure 2. Data model associated with knowledge model.

disciplines to work collaboratively as a cross-functional team, some objects of the knowledge model created may need to be shared to other disciplines (vehicular feature) or to global (universal feature) if necessary.

By the help support of data model and knowledge model and multi-disciplinary concept, a product can be decomposed and represented into multi-viewpoint [17] as shown in Figure 3. The design system provides two types of viewpoint to the designers: trade view and common view. Each designer uses a trade view to describe the product in their specific viewpoint. Any universal feature created will be represented into the common view that consists of frame view and geometry view. Another important viewpoint in the design system is technologist view [18]. This view represents the functional interrelationship of the product as illustrated in Figure 4. It facilitates the designers to recognize the relationships between the design solutions proposed into the system.

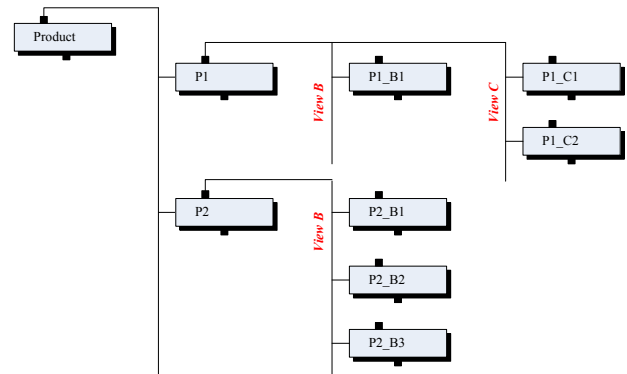


Figure 3. Multi-view representation.

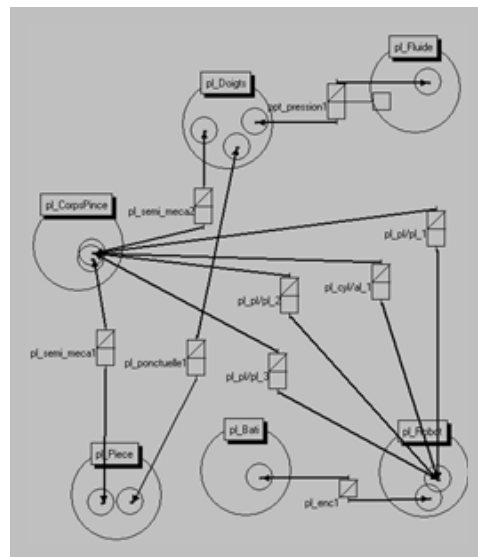


Figure 4. Functional representation.

3.3. Methods for Integration

Knowledge structure can be represented by relationships among theories. A theory can represent only a piece of knowledge about one discipline. Two theories should be in principle independent. If not, it means that the axioms of the two theories overlap each other. These interactions among theories are the source of complexity of multi-disciplinary problems [19].

During the design process, an instantiation of feature represents an object of knowledge model. Each created instantiation should be independent to each other. If not, it means that there is a relationship to one another. In this case, when an expert creates an instantiation depending on his discipline, another instantiation is automatically engaged in the situation. As a result, this design could be considered complex if the designers who are concerned to this information do not recognize it. Thus, any knowledge introduced into the design must be stored and can be shared if required. However, not any instantiation can be created. The designers must have a coincident notion of design, “just need concept” [20] as described below:

- Designer must provide information and constraints of the current design to the system as soon as possible.
- Such information must be justified. The designer must provide only justified constraints, not just because of personal preference.

With this notion, the designers have less contradiction during the design process. A knowledge module stores knowledge, both characteristics and constraints, provided by the various experts from joined disciplines. However, the difficulties still exist in the design process if such information and knowledge are not shared to the designers who are concerned.

Cooperative Design Modeler, CoDeMo [21], is the integrated design system presented in this paper. It is a client-server system that gives access to designers who work on the same project. It can overcome the difficulties of inter-disciplinary problems by using the methods of data propagation and data translation. These tasks are executed by the system agent who acts as an internal designer to help support the individuals to translate any semantics provided from one discipline and then propagate to other related disciplines.

With the notification function, any instantiation created into the design system by a designer in the client side will be mapped to the shared database of the server side as illustrated in **Figure 5**. As well as the creation, modification or deletion of any instantiation is also mapped to the shared database. This method creates a collaborative environment and enhances CoDeMo to be synchronous. However, if the created

instantiation is vehicular or universal, it needs to be mapped to other viewpoints that are concerned.

The difficulties in collaboration of experts can result in three types: (i) ontology problem; (ii) inherent difficulties in dealing with many stakeholders; and (iii) multi-disciplinary design creates inter-disciplinary problems [19]. Since the designers use their semantics to describe the product, these semantics must be translated to any designers who are concerned with such information particularly that constrains other’s designs. The ontology problem can be reduced by using the data model and the knowledge model as described in 3.1. However, in certain situation, an instantiation created can induce other data. Then difficulties still exists as long as the stakeholders (designers) are not notified and up-to-date the current design information. To facilitate the designers in this case, knowledge modules and the method of data translation are necessary. Knowledge module allows the designers to gather knowledge and constraints in a specific grammar as shown, for example, in **Figure 6**. It is associated to the method of data translation that translates any features to other viewpoints that are concerned. According to **Figure 6**, once an instantiation of the feature ‘AxisSurface’ is created in the Frame view, this feature is then translated to a feature ‘Cylinder’ in the Geometry view. Indeed the ‘AxisSurface’ represents actually a cylindrical functional surface. The associated shape is then a cylinder, as illustrated in **Figure 7**.

Though the data translation method can facilitate the designer to recognize the current design, it does not guarantee that design has not a conflict. In case that there is a design conflict, a compromise mechanism may have to be activated. Radulescu [22] enhances the knowledge module to be able to substitute a design conflict by the substitution method.

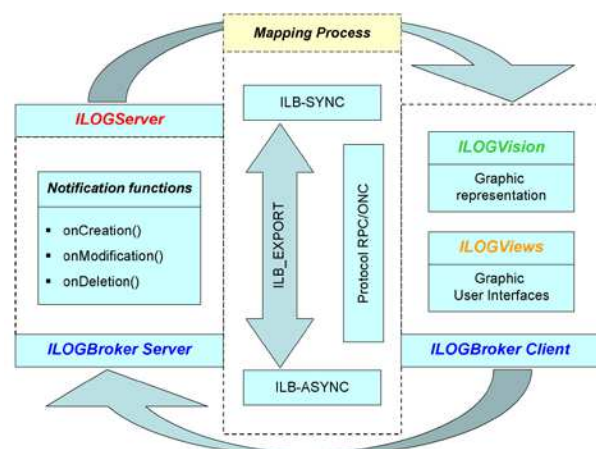


Figure 5. Architecture of data propagation.

Component_Name

AxisSurface Frame name

Translation

Link name discipline axis_surface_name

Component Cylinder Geometry name_Tran_0

Link name_Tran_0 surface_origin axis_geo_name

Relation axis_surface_name name axis_geo_name
name_Tran_0 Identity name_identity

@

Figure 6. A knowledge module of for translation.

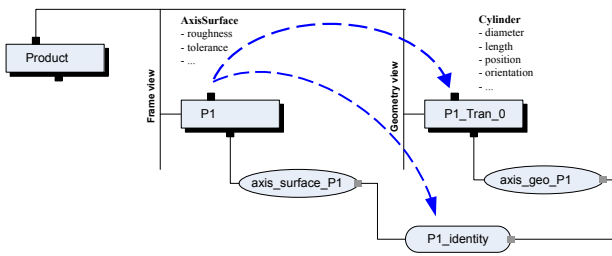


Figure 7. Data translation of a feature.

4. A Case Study

This section presents a case study of a furniture design process using CoDeMo as the integrated design system. At the initial phase of furniture design, the designer who concerns the global requirements, functionalities, and aesthetics of the product may propose a conceptual draft design to the system. This draft design can be handled by a CAD system and should be manipulated with the global requirements and functionalities. To facilitate the designers in the initial design phase, Pimapunsri [23] develops a tool to introduce a universal file format, STEP file, which contains the information of the draft design into CoDeMo, as illustrated an example of a computer desk in **Figure 8**.

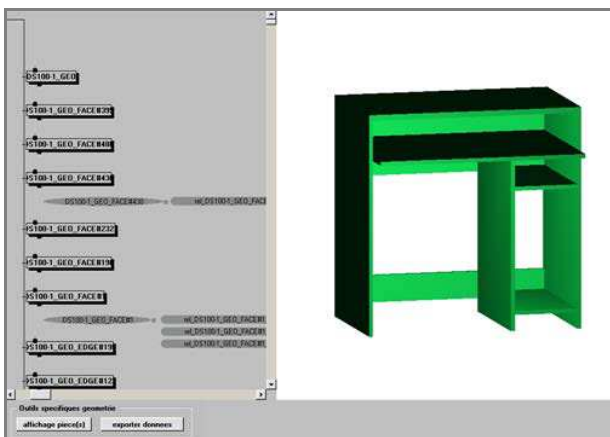


Figure 8. A draft design in the initial design phase.

However, the result of this initial design is not sufficient. It required the experts from various disciplines to detail design as a multi-disciplinary design team to provide information e.g. assembly solutions, material characteristics, manufacturing methods, etc. At this time, all designers must bring their information and constraints into the design system. CoDeMo brings a collaborative environment to the designers to determine design solutions and design parameters in the detail design phase as illustrated in **Figure 9**. The integrated design system helps support the designers to construct the design problems. It helps the designers to recognize the dependency and relationships between FRs and DPs as shown for example in **Figure 10**. A decoupled or weak-coupled design could be a coupled design problem if the designers lack of information. This section presents how to deal with the complexity of multi-disciplinary design including assembly aspect, manufacturing aspect, and mechanical aspect.

4.1. Assembly Aspect

In the assembly viewpoint, the assembler must provide assembly solutions to fasten the parts. There is usually more than one solution of fastening. Thus, a library that stores available assembly features and their characteristics is created as shown in **Figure 11**. The assembler must choose assembly features that satisfy the set of FR. Once a feature of assembly solution is chosen, its production rules must be translated and then propagated to other trade views that are concerned.

4.2. Mechanical Aspect

In this viewpoint, the mechanic must determine the material characteristics that satisfy the given FRs. The mechanic therefore possesses a database of materials and its properties. The constraints such as standard requirements

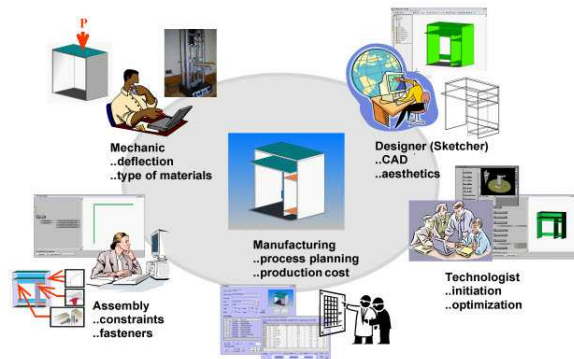


Figure 9. Collaborative environment of multi-disciplinary design during the detail design phase.

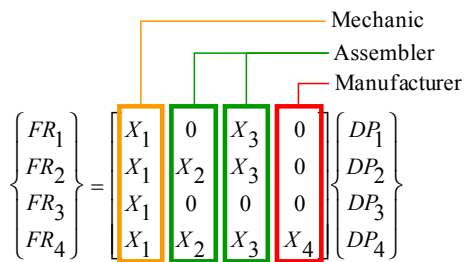


Figure 10. A design problem represented in design matrix.

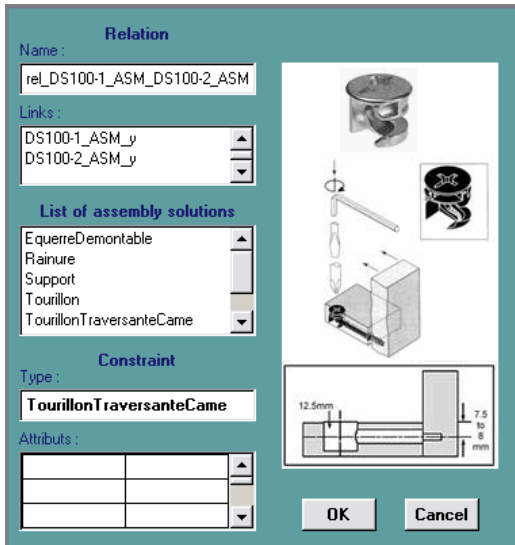


Figure 11. Panel of library of assembly solutions.

may be included in the database e.g. minimum load of resistant, number of accidental drop, number of lateral thrust, etc. Regarding these constraints, the mechanic may accept default materials (if exist) if it satisfies the FRs. Otherwise, a negotiation is required if the proposed solution does not satisfy due to dependency of DPs.

4.3. Manufacturing Aspect

In the manufacturing view, the manufacturer must be requested to propose the manufacturing method that satisfies the corresponding FRs based on available resources: machines, tools; available manufacturing technology. The manufacturer primarily focuses on the manufacturability of parts, process plan, and manufacturing cost estimating. A specific tool named Database Application for Production Planning (DAPP) [23] is developed to perform these tasks, as shown in **Figure 12**. In some situations, chosen DPs may influence the choice of manufacturing method e.g. assembly solution, material type, etc. In order to optimize the design, the manufacturer may request the stakeholders to adjust or revoke their DPs.

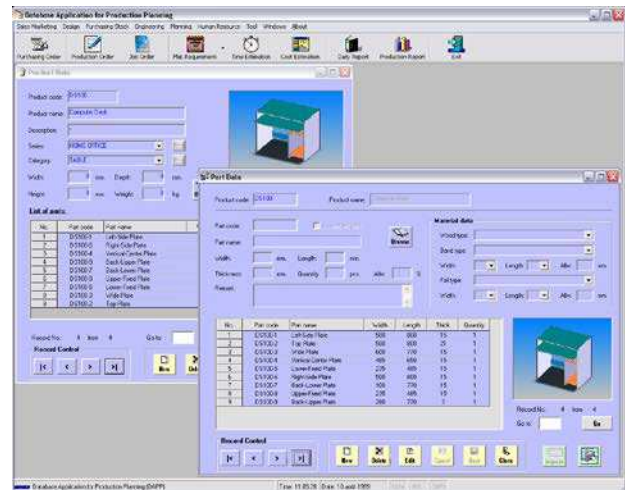


Figure 12. Specific tool for manufacturing view.

As presented in this case study, designing a product such furniture cannot be done by one designer. Though the design system provides a draft design in the initial design phase, it still requires various designers (experts) from different disciplines to work together in the detail design phase. The designers must provide their information and knowledge to the design system. The expert in assembly proposes the choice of fasteners but without knowledge of materials, he cannot define the proper size of the fasteners. The mechanic proposes the material characteristics and evaluates the thickness regard to the constraints given by the standard requirements. This information contributes the manufacturer to choose the method to produce the parts and estimate the cost. With the 'just need concept', each expert gives a piece of information and knowledge that deliver a global non-complex design.

5. Conclusion

This paper presents how the integrated design system solves the complexity of multi-disciplinary design. The data model helps the designers to decompose the product into hierarchical levels. To avoid the inter-disciplinary problems, the knowledge model helps the designers to describe the product in their own semantics based on the ontology concept. Each designer has their own viewpoint and common views as a result of applying the multi-view concept. The methods of data propagation and data translation facilitate the designers up-to-date on the current design. The just need concept can help the designer to avoid the addition of late constraints that often create multiple contradictions and usually limit a number of negotiations. However, if there are design conflicts occur during the design process, the knowledge module allows

the designers to gather their knowledge and constraints and store in the shared database. The substitution method may be needed to compromise. Although a designer often focuses on the discipline of interest, the integrated design system helps support them to recognize the design problems. Once the design problems are structured, the complexity of multi-disciplinary design could be solved.

REFERENCES

- [1] B. Archer, "What is Design?," 1996. <http://atschool.eduweb.co.uk/trinity/watdes.html>
- [2] G. Pahl, W. Beitz, J. Feldhusen and K. H. Grote, "Engineering Design: A Systematic Approach," 3rd Edition, Springer, London, 2007.
- [3] S. C.-Y. Lu, and N. P. Suh, "Complexity in Design of Technical Systems," *CIRP Annals - Manufacturing Technology*, Vol. 58, No. 1, 2009, pp. 157-160. [doi:10.1016/j.cirp.2009.03.067](https://doi.org/10.1016/j.cirp.2009.03.067)
- [4] Y. Akao and G. H. Mazur, "The Leading Edge in QFD: Past, Present and Future," *Quality & Reliability Management*, Vol. 20, No. 1, 2009, pp. 20-35. [doi:10.1108/02656710310453791](https://doi.org/10.1108/02656710310453791)
- [5] E. Domb, "Using TRIZ to Enhance Quality Functional Deployment," 2006. <http://www.realinnovation.com/content/c080922a.asp>
- [6] J. Terninko, "The QFD, TRIZ and Taguchi Connection: Customer-Driven Robust Innovation," *Proceedings of the Ninth Symposium on Quality Function Deployment*, Michigan, 1997, pp. 441-445.
- [7] K. Yang and H. Zhang, "A Comparison of TRIZ and Axiomatic Design," 2000. <http://www.triz-journal.com/archives/2000/08/d/index.htm>
- [8] K. Yang and H. Zhang, "Compatibility Analysis and Case Studies of Axiomatic Design and TRIZ," 2000. <http://www.triz-journal.com/archives/2000/09/c/index.htm>
- [9] N. P. Suh, "The Principles of Design," Oxford University Press, USA, 1990.
- [10] N. P. Suh, "Complexity: Theory and Applications," Oxford University Press, USA, 2005.
- [11] T. Lee, "Optimal Strategy For Eliminating Coupling Terms From A Design Matrix," *Integrated Design & Process Science*, Vol. 10, No. 2, 2006, pp. 45-55. ISSN:1092-0617
- [12] T. Lee and P. N. Jeziorek, "Understanding the Value of Eliminating an Off-Diagonal Term in A Design Matrix," *Proceedings of 4th International Conference on Axiomatic Design*, Florence, 2006.
- [13] E. M. Benavides and L. G. Rodriguez, "Extended Algorithm for Design-Matrix Reorganization," *Proceedings of 6th International Conference on Axiomatic Design*, Daejeon, 2011, pp. 20-26.
- [14] E. C. Chapa Kasusky, "Outils et structure pour la coopération formelle et informelle dans un contexte de conception holonique," Ph.D. Thesis. Institut National Polytechnique de Grenoble, Grenoble, 1997.
- [15] D. Brissaud and S. Tichkiewitch, "Innovation and Manufacturability Analysis in an Integrated Design Context," *Computers in Industry*, Vol. 43, No. 2, 2000, pp. 111-121. [doi:10.1016/S0166-3615\(00\)00061-0](https://doi.org/10.1016/S0166-3615(00)00061-0)
- [16] T. Gaucheron, "Intégration du Recyclage en Conception le Modèle Produit: Un Outil Descriptif et Cognitif dans le Processus de Prise en Compte du Recyclage," Ph.D. Thesis. Institut National Polytechnique de Grenoble, Grenoble, 2000.
- [17] S. Tichkiewitch and M. Véron, "Methodology and Product Model for Integrated Design Using a Multi-View System," *CIRP Annals - Manufacturing Technology*, Vol. 46, No. 1, 1997, pp. 81-84. [doi:10.1016/S0007-8506\(07\)60780-X](https://doi.org/10.1016/S0007-8506(07)60780-X)
- [18] M. Tollenare and D. Constant, "Linking Conceptual and Embodiment Design of Mechanical Systems," *Proceedings of 10th International Conference on Engineering Design (ICED)*, Tampere University of Technology, Tampere, 1997, pp. 669-673.
- [19] T. Tomiyama, V. D'Amelio, J. Urbanic and W. ElMaraghy "Complexity of Multi-Disciplinary Design," *CIRP Annals - Manufacturing Technology*, Vol. 56, No. 1, 2007, pp. 185-188. [doi:10.1016/j.cirp.2007.05.044](https://doi.org/10.1016/j.cirp.2007.05.044)
- [20] D. Brissaud, H. Paris and S. Tichkiewitch "Assisting Designers in the Forecasting of Surfaces Used for Easier Fixturing in a Machining Process," *Materials Processing Technology*, Vol. 65, No. 1-3, 1997, pp. 26-33. [doi:10.1016/0924-0136\(95\)02238-4](https://doi.org/10.1016/0924-0136(95)02238-4)
- [21] L. Roucoulesand and S. Tichkiewitch "CoDE: A Cooperative Design Environment – A New Generation of CAD Systems," *Concurrent Engineering: Research and Applications*, Vol. 8, No. 4, 2000, pp. 263-280. [doi:10.1177/1063293X0000800402](https://doi.org/10.1177/1063293X0000800402)
- [22] B. Radulescu, "Développement d'un système de contrôle et de gestion des processus de conception intégrée : application à la traduction et la substitution au sein d'un modèle produit," Ph.D. Thesis. Institut National Polytechnique de Grenoble, Grenoble, 2005.
- [23] K. Pimapunsri, "Conception Intégrée de Meubles Réalisés en Panneaux de Fibres ou de Particules," Ph.D. Thesis. Institut National Polytechnique de Grenoble, Grenoble, 2007.