



HAL
open science

Upper k -tuple domination in graphs

Gerard Jennhwa Chang, Paul Dorbec, Hye Kyung Kim, André Raspaud,
Haichao Wang, Weiliang Zhao

► **To cite this version:**

Gerard Jennhwa Chang, Paul Dorbec, Hye Kyung Kim, André Raspaud, Haichao Wang, et al.. Upper k -tuple domination in graphs. *Discrete Mathematics and Theoretical Computer Science*, 2012, Vol. 14 no. 2 (2), pp.285-292. 10.46298/dmtcs.593 . hal-00903694

HAL Id: hal-00903694

<https://hal.science/hal-00903694>

Submitted on 4 Jun 2014

HAL is a multi-disciplinary open access archive for the deposit and dissemination of scientific research documents, whether they are published or not. The documents may come from teaching and research institutions in France or abroad, or from public or private research centers.

L'archive ouverte pluridisciplinaire **HAL**, est destinée au dépôt et à la diffusion de documents scientifiques de niveau recherche, publiés ou non, émanant des établissements d'enseignement et de recherche français ou étrangers, des laboratoires publics ou privés.

Upper k -tuple domination in graphs

Gerard Jennhwa Chang^{123†} Paul Dorbec^{4‡} Hye Kyung Kim^{5§}
 André Raspaud^{4‡} Haichao Wang^{6¶} Weiliang Zhao^{7||}

¹Department of Mathematics, National Taiwan University, Taipei, Taiwan

²Taida Institute for Mathematical Sciences, National Taiwan University, Taipei, Taiwan

³National Center for Theoretical Sciences, Taipei Office, Taiwan

⁴LaBRI UMR CNRS 5800, Univ. Bordeaux, Talence, France

⁵Department of Mathematics Education, Catholic University of Daegu, Kyongsan, Republic of Korea

⁶Department of Mathematics, Shanghai University of Electric Power, Shanghai, China

⁷Zhejiang Industry Polytechnic College, Shaoxing, China

received 22nd February 2012, accepted 26th November 2012.

For a positive integer k , a k -tuple dominating set of a graph G is a subset S of $V(G)$ such that $|N[v] \cap S| \geq k$ for every vertex v , where $N[v] = \{v\} \cup \{u \in V(G) : uv \in E(G)\}$. The upper k -tuple domination number of G , denoted by $\Gamma_{\times k}(G)$, is the maximum cardinality of a minimal k -tuple dominating set of G . In this paper we present an upper bound on $\Gamma_{\times k}(G)$ for r -regular graphs G with $r \geq k$, and characterize extremal graphs achieving the upper bound. We also establish an upper bound on $\Gamma_{\times 2}(G)$ for claw-free r -regular graphs. For the algorithmic aspect, we show that the upper k -tuple domination problem is NP-complete for bipartite graphs and for chordal graphs.

Keywords: Upper k -tuple domination, r -regular graph, bipartite graph, split graph, chordal graph, NP-completeness.

1 Introduction

All graphs considered in this paper are finite, simple and undirected. In a graph G with vertex set $V(G)$ and edge set $E(G)$, the *open neighborhood* of a vertex v is $N(v) = \{u \in V(G) : uv \in E(G)\}$ and the *closed neighborhood* is $N[v] = \{v\} \cup N(v)$. The *degree* of v , denoted by $d(v)$, is the cardinality of $N(v)$. Denote by $\delta(G)$ the minimum degree of a vertex in G . A graph is r -regular if $d(v) = r$ for all $v \in V$. A *stable set* (respectively, *clique*) of G is a subset S of $V(G)$ in which every two vertices are not adjacent

[†]Email: gjchang@math.ntu.edu.tw. Supported in part by the National Science Council under grant NSC99-2923-M-002-007-MY3.

[‡]Supported in part by Agence Nationale de la Recherche under grant ANR-09-blan-0373-01.

[§]E-mail: hkkim@cu.ac.kr. Supported in part by the Basic Science Research Program, the National Research Foundation of Korea, the Ministry of Education, Science and Technology (2011-0025989).

[¶]Email: whchao2000@163.com. Supported in part by the Foundation for distinguished Young Teachers, Shanghai Education Committee (No. sdl10023) and the Research Foundation of Shanghai University of Electric Power (No. K-2010-32).

^{||}Email: zwl@shu.edu.cn.

(respectively, are adjacent). For two disjoint subsets A and B of $V(G)$, let $e[A, B]$ denote the number of edges between A and B .

For $S \subseteq V(G)$, the *subgraph induced* by S is the graph $G[S]$ with vertex set S and edge set $\{uv \in E(G) : u, v \in S\}$. A *bipartite* graph is a graph whose vertex set can be partitioned into two sets such that every two distinct vertices may be adjacent only if they are in different sets. A *split* graph is a graph whose vertex set can be partitioned into a stable set and a clique. A *chord* of a cycle is an edge joining two vertices on the cycle that are not adjacent on the cycle. A *chordal graph* is a graph in which every cycle of length at least four has a chord. Split graphs are chordal. A graph G is called *claw-free* if it does not contain the bipartite complete graph $K_{1,3}$ as an induced subgraph.

For positive integer k , a *k -tuple dominating set* of G is a subset S of $V(G)$ such that $|N[v] \cap S| \geq k$ for all $v \in V(G)$. For a k -tuple dominating set S , any vertex in $N[v] \cap S$ is said to *dominate* v . Notice that a graph has a k -tuple dominating set if and only if $\delta(G) \geq k - 1$. The *k -tuple domination number* $\gamma_{\times k}(G)$ of G is the minimum cardinality of a k -tuple dominating set of G , while the *upper k -tuple domination number* $\Gamma_{\times k}(G)$ is the maximum cardinality of a minimal k -tuple dominating set. A $\Gamma_{\times k}(G)$ -*set* of G is a minimal k -tuple dominating set of G of cardinality $\Gamma_{\times k}(G)$. An application of k -tuple domination for fault tolerance networks is presented in [9, 12]. For more results on k -tuple domination, we refer to [1, 2, 3, 4, 5, 13, 14, 15, 16, 17, 18, 19].

In this paper we first give an upper bound on $\Gamma_{\times k}$ for r -regular graphs, and characterize the extremal graphs achieving the upper bound. We also establish a sharp upper bound on $\Gamma_{\times 2}(G)$ for claw-free r -regular graphs. Finally, we show that the upper k -tuple domination problem is NP-complete for bipartite graphs and chordal graphs.

2 Upper k -tuple domination for r -regular graphs

This section establishes a sharp upper bound for upper k -tuple domination on r -regular graphs.

First, a k -tuple dominating set S is minimal if and only if every vertex in S is not *avoidable*, that is, it has a closed neighbor that is dominated by exactly k vertices in S . Hence, we have the following property.

Lemma 1 *In a graph G with $\delta(G) \geq k - 1$, a k -tuple dominating set S is minimal if and only if each vertex in S has some closed neighbor u with $|N[u] \cap S| = k$.*

For integers $r \geq k \geq 1$, let $\mathcal{H}_{r,k}$ be the family of r -regular graphs H whose vertex set is the disjoint union $F_1 \cup F_2 \cup F_3$, where F_1 induces an $(r - 1)$ -regular graph of which each vertex has exactly one neighbor in F_2 , F_2 is a stable set of which each vertex has exactly $k - 1$ neighbors in F_1 and exactly $r + 1 - k$ neighbors in F_3 , and F_3 is a stable set of which each vertex has exactly r neighbors in F_2 , see Figure 1. Since $(r + 1 - k)|F_2| = e[F_2, F_3] = r|F_3|$, there is some integer $m \geq 1$ such that $|F_2| = rm/g$ and $|F_3| = (r + 1 - k)m/g$, where $g = \gcd(r + 1 - k, r) = \gcd(r, k - 1)$. And then $|F_1| = (k - 1)rm/g$. The total number of vertices in H is $n = (kr + r + 1 - k)m/g$. According to Lemma 1, $F_1 \cup F_2$ is a minimal k -upper dominating set of H and so $\Gamma_{\times k}(H) \geq \frac{krn}{kr+r+1-k}$.

Theorem 2 *If G is a r -regular graph of order n with $r \geq k \geq 2$, then $\Gamma_{\times k}(G) \leq \frac{krn}{kr+r+1-k}$ with equality if and only if $G \in \mathcal{H}_{r,k}$.*

Proof: Let S be a $\Gamma_{\times k}(G)$ -set of G and $S' = V(G) \setminus S$. For $k \leq i \leq r + 1$, we define

$$S_i = \{u \in S : |N[u] \cap S| = i\} \quad \text{and} \quad S'_i = \{u \in S' : |N[u] \cap S| = i\}.$$

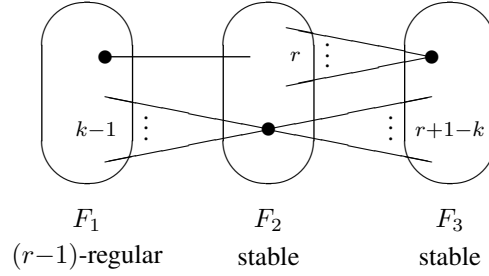


Fig. 1: An r -regular graph H in $\mathcal{H}_{r,k}$.

Notice that $S'_{r+1} = \emptyset$ and S'_r is stable as every vertex of S'_r has neighbors only in S . Since every vertex has at least k closed neighbors in S , it is the case that $S = \bigcup_{i=k}^{r+1} S_i$ and $S' = \bigcup_{i=k}^r S'_i$ are disjoint unions. Therefore, $|S| = \sum_{i=k}^{r+1} |S_i|$ and $|S'| = \sum_{i=k}^r |S'_i|$.

According to Lemma 1, every vertex in S_{r+1} has at least one neighbor in S_k , while every vertex in S_k has at most $k - 1$ neighbors in S_{r+1} . Therefore,

$$|S_{r+1}| \leq e[S_{r+1}, S_k] \leq (k - 1)|S_k| \tag{1}$$

or equivalently

$$|S_{r+1}| - (k - 1)|S_k| \leq 0. \tag{2}$$

By Lemma 1 again, every vertex in $X = \bigcup_{i=k+1}^{r+1} S_i$ has at least one neighbor in $S_k \cup S'_k$ and every vertex in S_k (respectively, S'_k) has at most $k - 1$ (respectively, k) neighbors in X . Therefore,

$$\sum_{i=k+1}^{r+1} |S_i| \leq e[X, S_k] + e[X, S'_k] \leq (k - 1)|S_k| + k|S'_k| \tag{3}$$

or equivalently

$$\sum_{i=k+1}^{r+1} |S_i| - (k - 1)|S_k| \leq k|S'_k|. \tag{4}$$

We then use a double counting of $e[S, S']$ to get

$$\sum_{i=k}^r (r + 1 - i)|S_i| = e[S, S'] = \sum_{i=k}^r i|S'_i|. \tag{5}$$

Let $p = \min(\frac{r+1-k}{k}, 1)$ and $q = \max(\frac{r+1-k}{k}, 1) - 1$. Then, $p > 0, q \geq 0$ and $q + 1 \geq \frac{r+1-k}{k} = p + q$. Consequently, $(r + 1 - k) - (p + q)(k - 1) = p + q$ and $q + r + 1 - i \geq q + 1 \geq p + q$ for $k + 1 \leq i \leq r$, which gives (6). Adding p times (2), q times (4) and (5) gives the first inequality in (7). And $(q + 1)k = \max\{r + 1 - k, k\} \leq r$ with equality only when $r = k$, which gives the second inequality in (7).

$$(p + q)|S| \leq ((r + 1 - k) - (p + q)(k - 1))|S_k| + (p + q)|S_{r+1}| + \sum_{i=k+1}^r (q + r + 1 - i)|S_i| \tag{6}$$

$$\leq (q + 1)k|S'_k| + \sum_{i=k+1}^r i|S'_i| \leq r|S'| = rn - r|S|. \tag{7}$$

Hence, $\frac{kr+r+1-k}{k}|S| = (r + p + q)|S| \leq rn$ and so $\Gamma_{\times k}(G) \leq \frac{krn}{kr+r+1-k}$, which proves the first part of the theorem.

Suppose $\Gamma_{\times k}(G) = \frac{krn}{kr+r+1-k}$. By the proof above, the inequalities in (1), the inequalities in (3) when $q > 0$, and the inequalities in (6) and (7) are equalities. The equality in (6) gives that $S = S_k \cup S_{r+1}$ when $p + q < q + 1$ and $S = S_k \cup S_{r+1} \cup S_r$ when $p + q \geq q + 1$, while the second equality in (7) gives that $S' = S'_r$ which is stable. The first equality in (1) gives that every vertex in S_{r+1} has exactly one neighbor in S_k , while the second equality gives that every vertex in S_k has exactly $k - 1$ neighbors in S_{r+1} and so exactly $r + 1 - k$ neighbors in S' . We claim that $p + q \geq q + 1$ is impossible, for otherwise $p \geq 1$ implying $\frac{r+1-k}{k} \geq 1$ and so $r > k$. Then by Lemma 1, every vertex in S_r is adjacent to some vertex in $S'_k = \emptyset$ as $S' = S'_r$, a contradiction. Hence, $p + q < q + 1$ and so $S = S_k \cup S_{r+1}$. Letting $F_1 = S_{r+1}$, $F_2 = S_k$ and $F_3 = S'$, we have that G is in $\mathcal{H}_{r,k}$. On the other hand, any graph G in $\mathcal{H}_{r,k}$ satisfies $\Gamma_{\times k}(G) \geq \frac{krn}{kr+r+1-k}$ and so $\Gamma_{\times k}(G) = \frac{krn}{kr+r+1-k}$. \square

The extremal graphs in $\mathcal{H}_{r,k}$ for Theorem 2 contain claws. For claw-free r -regular graphs, the upper bound in Theorem 2 for upper 2-tuple domination can be improved.

Theorem 3 *If G is a claw-free r -regular graph of order n with $r \geq 3$, then $\Gamma_{\times 2}(G) \leq \frac{2n}{3}$.*

Proof: Let S, S', S_i and S'_i be defined as in the proof of Theorem 2 with $k = 2$. For $2 \leq i \leq r + 1$, we further write

$$S_{2,i} = \{u \in S_2: |N(u) \cap S_i| = 1\} \quad \text{and} \quad S_{i,2} = \{u \in S_i: |N(u) \cap S_2| \geq 1\}.$$

Then $|S_2| = \sum_{i=2}^{r+1} |S_{2,i}|$. By the definition of $S_{2,i}$ and $S_{i,2}$, for $3 \leq i \leq r + 1$,

$$|S_{i,2}| \leq e[S_{i,2}, S_{2,i}] = |S_{2,i}|. \tag{8}$$

By Lemma 1, $S_{r+1,2} = S_{r+1}$ and so

$$|S_{r+1}| \leq |S_{2,r+1}| \leq |S_2|. \tag{9}$$

We then consider $e[S'_r, S]$. Since S'_r is stable and G is claw-free, every vertex in S has at most 2 neighbors in S'_r . First, every vertex $u \in S_{2,r+1}$ has no neighbor in S'_r . Otherwise, if such a neighbor v exists, then u has another neighbor w in S' and a neighbor x in S_{r+1} . Since x has only neighbors in S , it is not adjacent to v nor to w . Also, v is not adjacent to w since it has only neighbors in S . Hence a claw occurs at u , a contradiction. Second, for $3 \leq i \leq r$, every vertex $u \in S_i \setminus S_{i,2}$ has no neighbor in S_2 and hence, by Lemma 1, it has a neighbor in S'_2 . Thus, if u is in S_r ($i = r$), then this neighbor in S'_2 is the only neighbor of u in S' , and so u has no neighbor in S'_r . Else, if $3 \leq i \leq r - 1$, then u has at most one neighbor in S'_r , or it would be the center of a claw. Finally, by definition, every vertex in S_{r+1} has no neighbor in S'_r . These give the first inequality in (10), while (8) and (9) give the second inequality in (10).

$$r|S'_r| = e[S'_r, S] \leq \sum_{i=2}^r 2|S_{2,i}| + \sum_{i=3}^r |S_{i,2}| + \sum_{i=3}^{r-1} |S_i| \leq 3|S_2| - 3|S_{r+1}| + \sum_{i=3}^{r-1} |S_i|. \tag{10}$$

Formula (5) with $k = 2$ gives

$$\sum_{i=2}^r (r+1-i)|S_i| = \sum_{i=2}^r i|S'_i|. \quad (11)$$

Formula (3) with $k = 2$ gives

$$\sum_{i=3}^{r+1} |S_i| \leq |S_2| + 2|S'_2|. \quad (12)$$

Adding $\frac{r-3}{r} \cdot (9)$, $\frac{1}{r} \cdot (10)$, (11) and $\frac{r-3}{2} \cdot (12)$ gives

$$\frac{r-1}{2}(|S_2| + |S_r| + |S_{r+1}|) + \sum_{i=3}^{r-1} \left(\frac{3r-1}{2} - i - \frac{1}{r}\right)|S_i| \leq (r-1)(|S'_2| + |S'_r|) + \sum_{i=3}^{r-1} i|S'_i| \quad (13)$$

The left side is bounded below by $\frac{r-1}{2}|S|$, the right above by $(r-1)|S'|$. Thus we get $|S| \leq 2|S'|$ and finally, $\Gamma_{\times 2}(G) \leq \frac{2n}{3}$. \square

3 Complexity results

The upper domination problem was shown to be NP-complete by Cheston, Fricke, Hedetniemi and Jacobs [6]. However, Cockayne, Favaron, Payan and Thomason [7] proved that $\Gamma(G) = \beta_0(G)$ for any bipartite graph G , and so $\Gamma(G)$ can be computed for bipartite graphs in polynomial time. It was also shown by Jacobson and Peters [11] that $\Gamma(G) = \beta_0(G)$ for any chordal graph G , and so $\Gamma(G)$ can be computed for chordal graphs in polynomial time. Besides, Hare, Hedetniemi, Laskar, Peters and Wimer [10] also established a polynomial algorithm for determining $\Gamma(G)$ on generalized series-parallel graphs.

On the other hand, we shall prove that the k -tuple domination problem, with $k \geq 2$ fixed, is NP-complete for bipartite graphs and for chordal graphs. The proofs are separated into the cases of $k = 2$ and of $k \geq 3$. We consider the decision problem version as follows.

Upper k -tuple domination problem (U k TD)

Instance: A graph $G = (V, E)$ and a positive integer $s \leq |V|$.

Question: Does G have a minimal upper k -dominating set of cardinality at least s ?

To show that U2TD is NP-complete, we will make use of the well-known NP-complete problem 3-SAT [8].

One-in-three 3SAT (OneIn3SAT)

Instance: A set $U = \{u_1, \dots, u_n\}$ of n variables and a collection $\mathcal{C} = \{c_1, \dots, c_m\}$ of m clauses over U such that each clause $c \in \mathcal{C}$ has $|c| = 3$ and no clause contains a negated variable.

Question: Is there a truth assignment $\mathcal{A}: U \rightarrow \{\text{true}, \text{false}\}$ for U such that each clause in \mathcal{C} has exactly one true literal?

Theorem 4 *The upper 2-tuple domination problem is NP-complete even restricted on bipartite graphs or on split graphs, and hence also on chordal graphs.*

Proof. Obviously, U2TD is in NP. We shall show the NP-completeness of U2TD for bipartite graphs by reducing OneIn3SAT to it in polynomial time. Let $U = \{u_1, u_2, \dots, u_n\}$ and $\mathcal{C} = \{c_1, c_2, \dots, c_m\}$ be an instance I of OneIn3SAT. We transform I to the instance (G_I, s) of U2TD in which $s = 3n + m$ and G_I is the bipartite graph formed as follows.

Corresponding to each variable u_i we associate a cycle $C_i = u_i x_i y_i z_i u_i$. Corresponding to each 3-element clause c_j we associate a vertex named w_j . Joining the vertex u_i to the vertex w_j if and only if the literal u_i belongs to the clause c_j . According to the above construction, it is easy to see that G_I is a bipartite graph and the construction is accomplished in polynomial time. The graph G_I associate with $(u_1 \vee u_2 \vee u_3) \wedge (u_2 \vee u_3 \vee u_4)$ is shown in Figure 2.

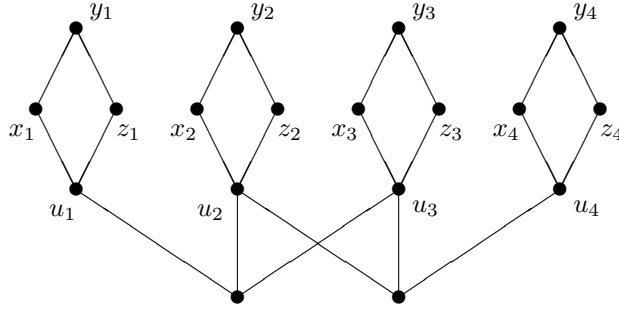


Fig. 2: The graph G_I for $(u_1 \vee u_2 \vee u_3) \wedge (u_2 \vee u_3 \vee u_4)$.

We next show that I has a satisfying truth assignment if and only if G_I has a minimal upper 2-tuple dominating set of cardinality at least $s = 3n + m$.

Suppose first I has a satisfying truth assignment \mathcal{A} . A minimal upper 2-tuple dominating set S of G_I of cardinality s is constructed as follows. Let w_j belong to S for all $1 \leq j \leq m$. For each $1 \leq i \leq n$, if $\mathcal{A}(u_i) = \{\text{true}\}$, then let u_i, x_i and z_i be in S ; otherwise, let x_i, y_i and z_i be in S . Clearly, $|N[v] \cap S| \geq 2$ for each vertex $v \in V(G_I)$ and S satisfies the conditions of Lemma 1, and so S is a minimal upper 2-tuple dominating set of G_I with cardinality $s = 3n + m$.

On the other hand, assume that S is a minimal upper 2-tuple dominating set of G_I with cardinality at least $s = 3n + m$. It follows from Lemma 1 that $|S \cap V(C_i)| \leq 3$ for $1 \leq i \leq n$. Further, $|S \cap \{w_1, w_2, \dots, w_m\}| \leq m$ and so $|S| \leq 3n + m$. Notice that $|S| \geq 3n + m$ by the assumption. Hence, $|S \cap V(C_i)| = 3$ for $1 \leq i \leq n$ and $\{w_1, w_2, \dots, w_m\} \subseteq S$. Let $\{u_{j_1}, u_{j_2}, u_{j_3}\}$ be the open neighborhood of w_j in G_I for $1 \leq j \leq m$. Since S is a minimal upper 2-tuple dominating set, $|S \cap \{u_{j_1}, u_{j_2}, u_{j_3}\}| \geq 1$. We claim that $|S \cap \{u_{j_1}, u_{j_2}, u_{j_3}\}| = 1$. Otherwise, $|S \cap \{u_{j_1}, u_{j_2}, u_{j_3}\}| \geq 2$. Then the degree of w_j in $G_I[S]$ is more than 1. However, w_j does not satisfy the conditions of Lemma 1 because $|S \cap V(C_i)| = 3$ for $1 \leq i \leq n$, a contradiction. Let $\mathcal{A}: U \rightarrow \{\text{true}, \text{false}\}$ be defined by $\mathcal{A}(u_i) = \{\text{true}\}$ if $u_i \in S$ and $\mathcal{A}(u_i) = \{\text{false}\}$ if $u_i \notin S$. By the construction of G_I , we have each clause c_j of I contains only one variable u_i belonging to S . So \mathcal{A} is a satisfying truth assignment for I . Consequently, I has a satisfying truth assignment if and only if G_I has a minimal upper 2-tuple dominating set of cardinality at least $s = 3n + m$. This completes the proof for bipartite graphs.

To deal with split graphs, we add edges to make $\{u_1, y_1, u_2, y_2, \dots, u_n, y_n\}$ a clique. The same arguments hold, and show the NP-completeness of the upper 2-tuple domination problem for split graphs. \square

Theorem 5 For any fixed integer $k \geq 3$, the k -tuple domination problem is NP-complete for bipartite graphs and for chordal graphs.

Proof: For any bipartite graph G on n vertices, consider the bipartite graph G' obtained by the following process. For each vertex v of G , we add a copy of $K_{k-1, k-1}$, denoted G_v with bipartition denoted (X_v, Y_v) . Then we link by an edge the vertex v to $k-2$ vertices in X_v . The widget added to each vertex v is drawn in Figure 3.

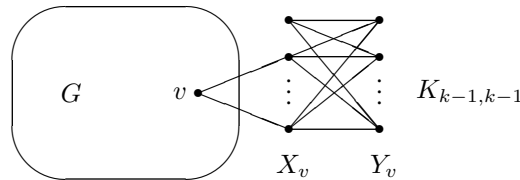


Fig. 3: The widget G_v added to each vertex v in G .

We claim that G has a minimal upper 2-tuple dominating set of size at least s if and only if G' has a minimal upper k -tuple dominating set of size at least $s + 2(k-1)n$.

Clearly, if S is a minimal upper 2-tuple dominating set of G with size at least s , then $S \cup (\bigcup_{v \in V(G)} (X_v \cup Y_v))$ is a minimal upper k -tuple dominating set of G' with size at least $s + 2(k-1)n$.

On the other hand, suppose S' is a minimal upper k -tuple dominating set of G' with size at least $s + 2(k-1)n$. Since every vertex in Y_v is of degree $k-1$, S' necessarily includes $\bigcup_{v \in V(G)} (X_v \cup Y_v)$. Let $S = S' \setminus (\bigcup_{v \in V(G)} (X_v \cup Y_v))$. Every vertex v in $V(G)$ is dominated precisely $k-2$ times by vertices from $S' \setminus S$. Therefore, v is dominated by at least two vertices in S and so S is a 2-tuple dominating set of G . By Lemma 1, v is dominated by some $u \in V(G')$ with $N_{G'}[u] = k$. This vertex u must be in $V(G)$ and $N_G[u] = 2$. By Lemma 1 again, S is a minimal upper 2-tuple dominating set of G with size at least s .

The NP-completeness of the upper k -tuple domination problem for bipartite graphs then follows from the NP-completeness of the upper 2-tuple domination problem for bipartite graphs.

To deal with the chordal case, we start with a chordal graph G and for each $v \in V(G)$ we add to G_v edges joining any pair of vertices in X_v , forming a clique. The same arguments hold, and show the NP-completeness of the upper k -tuple domination problem for chordal graphs as a consequence of the NP-completeness of the upper 2-tuple domination problem for chordal graphs. \square

References

- [1] T. Araki, On the k -tuple domination of de Bruijn and Kautz digraphs, *Inform. Process. Lett.* 104 (2007), 86–90.
- [2] M. Blidia, M. Chellali and T. W. Haynes, Independent and double domination in trees, *Utilitas Math.* 70 (2006), 159–173.
- [3] M. Blidia, M. Chellali and T. W. Haynes, Characterizations of trees with equal paired and double domination numbers, *Discrete Math.* 306 (2006), 1840–1845.
- [4] G. J. Chang, The upper bound on k -tuple domination numbers of graphs, *Euro. J. Combin.* 29 (2008), 1333–1336.
- [5] M. Chellali and T. W. Haynes, On paired and double domination in graphs, *Utilitas Math.* 67 (2005), 161–171.
- [6] G. A. Cheston, G. Fricke, S. T. Hedetniemi and D. P. Jacobs, On the computational complexity of upper fractional domination, *Discrete Appl. Math.* 27 (1990), 195–207.
- [7] E. J. Cockayne, O. Favaron, C. Payan and A. G. Thomason, Contributions to the theory of domination, independence and irredundance in graphs, *Discrete Math.* 33 (1981), 249–258.
- [8] M. R. Garey and D. S. Johnson, *Computers and Intractability: A Guide to the Theory of NP-Completeness*, W. H. Freeman and Company, 1979.
- [9] F. Harary and T. W. Haynes, Double domination in graphs, *Ars Combin.* 55 (2000), 201–213.
- [10] E. O. Hare, S. T. Hedetniemi, R. C. Laskar, K. Peters and T. Wimer, Linear-time computability of combinatorial problems on generalized-series-parallel graphs, In D. S. Johnson *et al.*, editors, *Discrete Algorithms and Complexity*, pages 437–457, 1987, Academic Press, New York.
- [11] M. S. Jacobson and K. Peters, Chordal graphs and upper irredundance, upper domination and independence, *Discrete Math.* 86 (1990), 59–69.
- [12] R. Klasing and C. Laforest, Hardness results and approximation algorithms of k -tuple domination in graphs, *Inform. Process. Lett.* 89 (2004), 75–83.
- [13] C.-S. Liao and G. J. Chang, Algorithmic aspects of k -tuple domination in graphs, *Taiwanese J. Math.* 6 (2002), 415–420.
- [14] C.-S. Liao and G. J. Chang, k -tuple domination in graphs, *Inform. Process. Lett.* 87 (2003), 45–50.
- [15] D. Rautenbach and L. Volkmann, New bounds on the k -domination number and the k -tuple domination number, *Appl. Math. Lett.* 20 (2007), 98–102.
- [16] E. F. Shan, C. Y. Dang and L. Y. Kang, A note on Nordhaus-Gaddum inequalities for domination, *Discrete Appl. Math.* 136 (2004), 83–85.
- [17] B. Wang and K. N. Xiang, On k -tuple domination of random graphs, *Appl. Math. Lett.* 22 (2009), 1513–1517.
- [18] G. J. Xu, L. Y. Kang, E. F. Shan and H. Yan, Proof of a conjecture on k -tuple domination in graphs, *Appl. Math. Lett.* 21 (2008), 287–290.
- [19] V. Zverovich, The k -tuple domination number revisited, *Appl. Math. Lett.* 21 (2008), 1005–1011.