



HAL
open science

Characterization of pentraxin 3 in the horse and its expression in airways

Eve Ramery, Laurence Fievez, Audrey Fraipont, Fabrice Bureau, Pierre Lekeux

► **To cite this version:**

Eve Ramery, Laurence Fievez, Audrey Fraipont, Fabrice Bureau, Pierre Lekeux. Characterization of pentraxin 3 in the horse and its expression in airways. *Veterinary Research*, 2010, 41 (2), 10.1051/vetres/2009066 . hal-00903136

HAL Id: hal-00903136

<https://hal.science/hal-00903136>

Submitted on 11 May 2020

HAL is a multi-disciplinary open access archive for the deposit and dissemination of scientific research documents, whether they are published or not. The documents may come from teaching and research institutions in France or abroad, or from public or private research centers.

L'archive ouverte pluridisciplinaire **HAL**, est destinée au dépôt et à la diffusion de documents scientifiques de niveau recherche, publiés ou non, émanant des établissements d'enseignement et de recherche français ou étrangers, des laboratoires publics ou privés.

Characterization of pentraxin 3 in the horse and its expression in airways

Eve RAMERY*, Laurence FIEVEZ, Audrey FRAIPONT, Fabrice BUREAU,
Pierre LEKEUX

Department for Functional Sciences, Faculty of Veterinary Medicine, University of Liege, Bvd de Colonster,
20, B-4000 Liege, Belgium

(Received 5 May 2009; accepted 28 October 2009)

Abstract – The long pentraxin 3 (PTX3) plays an important role in host defence and its over-expression may contribute to airway injury. The aim of the present study was therefore to characterize in more detail PTX3 and its expression in the horses' airway. Six healthy horses and six horses affected by recurrent airway obstruction (R.A.O.) were submitted to a dusty environment challenge. PTX3 DNA and cDNA were cloned and sequenced. PTX3 expression was evaluated by RT-qPCR, Western blotting and immunohistochemistry in bronchoalveolar lavage fluid (BALF) cells, BALF supernatant and bronchial epithelial cells. An alternative splicing of the second exon of PTX3 occurred, resulting in two forms of the protein: "spliced" (32 kDa) and "full length" (42 kDa). PTX3 was detected in BALF macrophages, neutrophils and bronchial epithelial cells. It was over-expressed in the BALF supernatant from R.A.O.-affected horses in crisis. However, dust was unable to induce PTX3 in BALF cells *ex vivo*, indicating that dust is an indirect inducer of PTX3. Dust exposure *in-vivo* induced PTX3 in BALF macrophages but there was no significant difference between healthy and R.A.O.-affected horses. Conversely, PTX3 was over-expressed in the bronchial epithelial cells from R.A.O.-affected horses in crisis. These data indicate a differential regulatory mechanism in inflammatory and bronchial epithelial cells and offer therapeutically interesting perspectives.

PTX3 / horse / airway / inflammation

1. INTRODUCTION

The respiratory tract is continuously challenged with potentially infective microorganisms and noxious airborne substances. An effective defense system is necessary for protecting the respiratory tract from pathogen invasion [19]. Airways function not only as a physical barrier but also as a biological sensor for invading microorganisms and cytokines, chemokines and other inflammatory mediators they induce [15, 22]. These soluble factors, together with infiltrated immune cells, can initiate local inflammatory reactions designed to eliminate the invading

pathogens, dilute the pathogens' products, limit the damages, and eventually lead to recovery [25]. However, excessive inflammation can induce persistent tissue injury and cause morbidity and mortality [25].

The long pentraxin 3 (PTX3) is a member of the pentraxin family that includes short pentraxins and long pentraxins. Human PTX3 (hPTX3) comprises a C-terminal pentraxin-like domain of 203 amino acids (aa) and a 178 aa N-terminal domain. It has a predicted molecular weight of 40.165 kDa. However, in sodium dodecyl sulfate (SDS)-polyacrylamide gel electrophoresis (PAGE) under reducing conditions, the apparent molecular weight is 45 kDa. This is due to the presence of an N-glycosylation site in the C-terminal domain [1].

* Corresponding author: eve.ramery@ulg.ac.be

On the contrary to short pentraxins (e.g. C-reactive protein, serum amyloid P) that are produced in the liver, PTX3 is produced by diverse cell types, locally, at the site of inflammation. Its production is induced by pathogen recognition. It detects microbial moieties, activates the classical pathway of complement and facilitates recognition by macrophages and dendritic cells (DC) [8]. In studies involving transgenic mice, it was shown that PTX3 over-expression could be protective [5] or deleterious [23], depending on the conditions.

Recurrent airway obstruction (R.A.O.) is a common cause of chronic respiratory disease that occurs in mature horses stabled in a dusty environment containing poor quality hay and straw. It is characterized by episodes of acute airway obstruction (crisis) followed by periods of clinical remission, when horses are kept away from the causative environment. The clinical manifestations of R.A.O. are consequent to lower airway inflammation and involve bronchospasm, excess mucus production and airway hyperresponsiveness to non-specific stimuli [20]. Evidence has accumulated that nucleated cells from bronchoalveolar lavage fluid (BALF) can produce numerous inflammatory mediators, such as interleukin (IL)-8, IL-1 β and tumor necrosis factor α (TNF- α) [9]. Identifying these factors and their regulatory mechanisms will help to understand the role of BALF cells in host defense and inflammatory responses. Using microarray, we recently reported 46 candidate genes with differentially regulated expression between horses suffering from R.A.O. and controls [19]. In particular, the long pentraxin 3 (PTX3) (also called TNF- α -stimulated gene 14) was highly over-expressed in BALF cells of horses suffering from R.A.O. and this was confirmed by real time-quantitative polymerase chain reaction (RT-qPCR).

PTX3 plays an important role in host defense and is expressed by a wide range of cell types and tissues. Particularly, over-expression of PTX3 can contribute to airway injury [11]. The aim of the present study was therefore to characterize in more detail PTX3 and its expression in airways. For this purpose, a naturally occurring airway inflammatory disease in horses, namely R.A.O., was used.

2. MATERIALS AND METHODS

2.1. In silico study

The human complementary deoxyribo-nucleotide acid (cDNA) sequence of *PTX3* (Accession number: NM_002852) has been blasted on the equine genome available on NCBI¹. Moreover, homologies between human and equine *PTX3* genomic sequences have been searched using UCSC². The equine sequence for *PTX3* cDNA obtained in this experiment was blasted on non-human, non-mouse expressed sequence tags (EST) available on NCBI.

2.2. Primers and antibodies (Ab)

All primers (Tab. I) were designed with Amplify33 and Oligo6.84 software and purchased from Eurogentec (Seraing, Belgium). The primary antibody, a monoclonal rat anti-human PTX3 (MNB1) was purchased from Alexis (Axxora BVPA, Zandhoven, Belgium). The secondary antibody, a polyclonal rabbit anti-rat immunoglobulin/HRP (No. P0450), was purchased from DakoCytomation (Glostrup, Denmark). A rat IgG2 β isotype control (clone 141945) was purchased from R&D systems (Oxon, UK). The specificity of the monoclonal antibody was tested in total protein extracts from equine peripheral blood leukocytes.

2.3. Dusty environment challenge

Six adult half-blood horses diagnosed as affected by R.A.O. (4 females and 2 geldings, median; ranges, 14.5; 9–22 years) and six considered free from respiratory diseases (2 females and 4 geldings, median; ranges, 17.5; 11–28 years) were investigated. The status of the horses (healthy versus affected) was assessed in agreement with the criteria determined by the R.A.O. experts [20], i.e. by history, clinical and endoscopic examination, functional tests (impulse oscillometry, arterial blood gas analysis) and BALF cell counts. Horses were vaccinated and dewormed regularly. The protocol was approved by the Ethics Committee of the University of Liege (Belgium). After a period of 2 months at pasture, all horses were exposed to irritants and aeroallergens by stabling them in the same barn with straw bedding and feeding poor quality, dusty hay for 2 weeks.

¹ <http://www.ncbi.nlm.nih.gov/>

² <http://genome.ucsc.edu/>

Table I. Primers.

Primers sequence 5' → 3'	
PCR target/ <i>Genomic PTX3 exon2</i>	
Forward	ACACACTGTTTTTCGGAGGTGTC
Reverse	CGAGACATCCCAGAAGATAGCC
RT-PCR target/ <i>PTX3 cDNA</i>	
Forward	GACAACGAAATAGACAATGGACTC
Reverse	CTTTGTGCCATAGGAAAACAGGAT
Forward	TCTGTGGCTTTGACCCAAATGC
Reverse	GAAATAGACAATGGACTTCATCC
RT-qPCR target/ <i>PTX3</i>	
Forward	TGGCCAAAACAAAATAACCAG
Reverse	GTGCTTTCAGATGAATGCTGT
RT-qPCR housekeeping gene/ <i>GAPDH</i>	
Forward	CCTTCTTGCTGGGTGATTG
Reverse	GACAATGAATTTGGCTACAGCA

2.4. BALF macrophage isolation

BALF was retrieved as previously described and kept at 4 °C until processed [27]. The cells were collected from BALF by centrifugation for 10 min at 2 000 rpm, washed twice and suspended in phosphate buffered saline (PBS) supplemented with 2% fetal calf serum (FCS). Ten mL of the mixture were gently layered over 17 mL of room temperature histopaque-1077 in a 25 mL centrifuge tube. Tubes were then centrifuged for 10 min at 1 500 rpm and the mononuclear cell layer was removed and washed twice with PBS + 2%FCS. The cells were then suspended in RPMI 1640-L glutamine supplemented with 10% heat-inactivated FCS and 1% penicillin-streptomycin. All cells were seeded in 6-well culture plates and incubated at 37 °C and 5% CO₂ in a humid atmosphere for 2 h. Non-adherent cells were rinsed out with two washes of PBS + 2%FCS.

2.5. BALF cell culture and treatments

Six culture conditions were applied on BALF cells originating from both healthy and R.A.O.-affected horses in remission: media alone, supplementation with LPS at 10 µg/mL, *Aspergillus fumigatus* at 80 cfu/mL and hay dust suspensions at 1 µg/mL, 10 µg/mL and 100 µg/mL respectively. The cells were cultured in RPMI 1640-L glutamine supplemented with 10% heat-inactivated FCS and 1% penicillin-streptomycin at 37 °C and 5% CO₂ for 6 and 24 h. Once the treatment was completed, the supernatants of the culture were collected from each well for measuring PTX3

protein. Cell pellets were immediately lysed in SDS. All collected samples were stored at -80 °C in order to perform Western blotting later.

2.6. Bronchial tissues from autopsy cases

Bronchial specimens were obtained within 2 h after death from 2 horses affected by R.A.O., in severe crisis and euthanized for ethical reasons, and from 3 healthy horses from the slaughterhouse. The specimens were directly mounted in Tissue-Tek[®] OCT compound and then snap-frozen and stored at -80 °C. Cryostat tissue sections were performed and used for immuno-histochemistry.

2.7. DNA isolation, PCR amplification

Desoxyribo-nucleotide acid (DNA) was extracted from peripheral blood nucleated cells originating from humans and equines, using the QIAamp 96 DNA Blood Kit (Qiagen, Kjvebki, Belgium) and following the manufacturer's instructions.

The PCR product was subjected to electrophoresis on agarose gel. It was then cloned into the cloning vector pGEM[®]T (Promega, Leiden, Netherlands). Positive clones were identified by the restriction enzyme FastDigest[®] MluI (Fermentas, St. Leon-Rot, Germany) and by analyzing the results on agarose gel. The clones were submitted to sequencing.

2.8. RNA isolation, reverse transcription and PCR amplification

Equine blood was collected using Paxgene[®] collection tubes (Sanbion, Uden, Netherlands) and the ribonucleotide acid (RNA) was extracted following the manufacturer's instructions. RNA concentration and purity were measured with spectrophotometer (Nanodrop, ThermoScientific, Wilmington, DE, USA). The cDNA was synthesized and amplified using the First Strand cDNA Synthesis kit for reverse transcription-polymerase chain reaction (RT-PCR) (Roche, Vilvoorde, Belgium) following the manufacturer's instructions. The product was then submitted to sequencing.

2.9. RT-qPCR

RT-qPCR was performed as previously described [18]. In brief, RNA was extracted from BALF macrophages using the RNeasy mini kit (Qiagen) and RT-qPCR reactions were performed with IQ Sybr Green Supermix (Bio-Rad, Nazareth, Belgium)

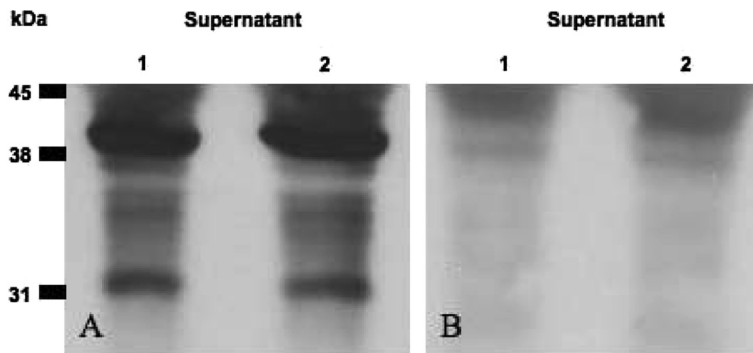


Figure 1. PTX3 specific antibody. (A) Using MNB1 human monoclonal primary antibody (which detects the C-terminal extremity of the PTX3 protein in humans), Western blotting revealed distinct masses for PTX3 protein corresponding to 32 and 42 kDa. (B) No band was detected using an IgG2b isotype control. The Western blotting was obtained using BALF cell culture supernatant. The cells originated from R.A.O.-affected horses in remission (named SN1 and SN2) and were challenged for 6 h with dust suspension (10 μ g/mL).

following the manufacturer's instructions. The reaction master mix was prepared as recommended by the manufacturer in a final volume of 20 μ L. Samples were normalized to equine *GAPDH*. The results were analyzed with the ICycler software version 3.OA (Bio-Rad) and a relative quantification of RNA present in the samples was performed using Pfaffl's model and *GAPDH* gene expression as a reference [17].

2.10. Western blotting

Western blotting was performed as previously described [2]. Briefly, cultured BALF cell lysates containing equal amounts of total protein and equal amounts of culture supernatant were heated at 60 $^{\circ}$ C with SDS 1% and bromophenol blue. They were then subjected to SDS-PAGE. Proteins were transferred onto a nitrocellulose membrane. The membrane was blocked with 5% dry milk and probed with the specific antibodies indicated. The rat IgG2 β isotype control and first antibody omission were used as negative controls. The blots were visualized with an ECL detection kit.

2.11. Immuno-histochemistry

Cytospin preparations of fresh BALF cells were performed. The cells were fixed in periodate-paraformaldehyde-lysine (PLP)-sucrose as previously described [24]. Bronchial sections and cytospin preparations were rehydrated in PBS for 5 min and

bronchial sections were treated with acetone for 10 min and methanol for 10 min. After blocking with 3% hydrogen peroxide for 20 min and 5% of albumin from bovine serum for 30 min, the slides were incubated for 90 min with either MNB1 monoclonal antibody (1:50 dilution), a rat IgG2 β isotype control (1:50 dilution), or no Ab, followed by polyclonal rabbit anti-rat immunoglobulins/HRP (1:100 dilution) as secondary Ab. Detection was done by AEC substrate chromogen. Slides were counterstained with Mayer's hematoxylin. For cytological evaluation, cytopins were stained with May-Grumwald Giemsa.

2.12. Statistical analysis

Statistical analysis of the healthy and R.A.O.-affected groups was performed by Anova using the software Statview 4.01 (SAS Institute, Cary, NC, USA). A *p* value of less than 0.05 was considered significant.

3. RESULTS

3.1. Characterization of equine *PTX3*

The blast identified three homology domains between the human cDNA of *PTX3* and the equine genomic sequence of *PTX3*, localized on horse chromosome 19. From UCSC, we

identified a gap in the equine genomic sequence corresponding to a part of the exon 2 of the human *PTX3*.

Our DNA sequencing results confirmed a 120 bp gap in the equine genomic region corresponding to *hPTX3* exon 2. The resulting predictive protein would thus be 340 aa long and weigh 37.282 kDa. The cDNA nucleotide sequence we obtained translated into a 235 aa predictive protein weighing 27.153 kDa. The Western blotting performed with BALF cell culture medium revealed apparent molecular masses of 32 and 42 kDa (Fig. 1).

Thus the equine *PTX3* gene, located on equine chromosome 19, seems to be organized in three exons separated by two introns. Our results also strongly suggest that an alternative splicing occurs with deletion of the second exon and results in the 32 kDa band on immunoblot.

The two predictive proteins maintain the two cysteine residues and the canonical "pentraxin consensus signature" (HxCxS/TWxS). The N-glycosylation Asparagine (Asn) site is also conserved. Alignment analysis of *hPTX3* and *ePTX3*, full length and spliced, aa sequences (Clustal W., European Bioinformatics Institute³) is shown in Figure 2.

A three-dimensional model for the pentraxin domain in *ePTX3* was generated from the high-resolution crystal structure of human SAP using Swiss Prot from Expsy.

3.2. Horse clinical status assessment

Clinical scores were significantly different between both groups ($p < 0.05$) after dust exposure. The most sensitive value of impulse oscillometry for R.A.O.-affected horse evaluation, X5Hz [26] was significantly different between R.A.O.-affected horses (-0.008 ± 0.004 kPa/L/s) and controls (0.0104 ± 0.002 kPa/L/s). The percentage of BALF neutrophils in R.A.O.-affected horses ($22.94 \pm 3.4\%$) was significantly increased compared to controls ($12 \pm 4.71\%$). The arterial blood oxygen partial pressure was significantly decreased in R.A.O.-affected horses (86.4 ± 6.9 mmHg) when compared to healthy horses (108.6 ± 5.9 mmHg).

³ <http://www.ebi.ac.uk/Tools/clustalw2/index.html>.

3.3. Cells expressing PTX3 in airways

Cells able to produce PTX3 in horses' airways were identified by immuno-histochemistry. PTX3 was detected in BALF macrophages and young neutrophils from both R.A.O.-affected and healthy horses after dust exposure. The signal appeared to be stronger in BALF cells from R.A.O.-affected horses. It was almost undetectable in BALF cells from either healthy or R.A.O.-affected horses at pasture (Fig. 3). PTX3 was also detected in eosinophils from a horse suffering from eosinophilia of unknown origin. A strong positive reaction was observed in foamy macrophages.

A positive immuno-histochemical reaction (red) was seen in frozen sections of bronchi from healthy and R.A.O.-affected horses, in bronchial epithelial cells and in infiltrative inflammatory cells (Fig. 4). In bronchial epithelial cells, it localized at the apex of the cells just behind the ciliated process. The staining seemed to be enhanced in horses suffering from R.A.O. No staining was found under negative control conditions.

3.4. Effect of dust on PTX3 expression

Following dust exposure, PTX3 was increased in the supernatant originating from horses suffering from R.A.O. (Fig. 5).

Since macrophages showed the strongest positive reaction for anti-PTX3 antibody, we investigated the effect of dust exposure on PTX3 induction in this cell type further. *PTX3* mRNA was over-expressed in BALF macrophages following dust exposure (Fig. 6). However, there was no significant difference between R.A.O.-affected horses and healthy horses. Similarly, at the protein level, an enhanced positive reaction for anti-PTX3 antibody was seen in macrophages following dust exposure, in both healthy horses and those suffering from R.A.O., though the reaction was stronger in horses suffering from R.A.O. (Fig. 3).

A. fumigatus and LPS are both known to be present in hay dust, a causative agent of R.A.O., and to induce *PTX3* expression. Thus, we studied the involvement of each stimulus on BALF cells ex vivo. The protein was detected in all conditions, including in the control assay. There


```

CLUSTAL 2.0.10 multiple sequence alignment

E_PTX3_full      MHLPAILFCVLWSVVSVAENSDDYELMYVNLNDNEIDNGLHPTEDRTPCDCRREDSEWDKLF 60
E_PTX3_sp        MHLPAILFCVLWSVVSVAENSDDYELMYVNLNDNEIDNGLHPTEDR----- 44
H_PTX3           MHLLAILFCALWSAVLAENSDDYDLMYVNLNDNEIDNGLHPTEDPTPCDCGQEHSEWDKLF 60
                ***  ***** .***.*  *****:*****:*****

E_PTX3_full      TMLNSQMREGMLLQATDDVLRGELQRLREELGRLAGRLAGPCAPAPAEAGLARALAE 120
E_PTX3_sp        -----
H_PTX3           IMLNSQMRE RMLLQATDDVLRGELQRLREELGR LAESLARPCAPGAPAEARLTSALDEL 120

E_PTX3_full      QQESRDAGRRLARLE-----GACE 139
E_PTX3_sp        -----CE 46
H_PTX3           LQATR DAGRR LARMEGAE AQRPEEAGRALAAVLEELRQTRADLHAVQGAARSWLPAGCE 180
                **

E_PTX3_full      TAVLFPMRSKKIFGVSVHPARPLRLESFSACIWVKATDVLNKTILFSGYTKRNPYEIQLYL 199
E_PTX3_sp        TAVLFPMRSKKIFGVSVHPARPLRLESFSACIWVKATDVLNKTILFSGYTKRNPYEIQLYL 106
H_PTX3           TAILFPMRSKKIFGVSVHPVRPMLRLESFSACIWVKATDVLNKTILFSGYTKRNPYEIQLYL 240
                **:*****.***.***:*****:*****:*****

E_PTX3_full      SSQSIVFVVGGEESKLVADTVVSLGRWTHLCSTWNSEKGR TSLWVDGELVASTVEMATGH 259
E_PTX3_sp        SSQSIVFVVGGEESKLVADTVVSLGRWTHLCSTWNSEKGR TSLWVDGELVASTVEMATGH 166
H_PTX3           SYQSIVFVVGGEENKLVAEAMVSLGRWTHLCCTWNSEGLTSLWVNGELAAATVEMATGH 300
                *  ***** .***: : ***** .***:*  *****:***.***:*****

E_PTX3_full      VVPEGGILQIGQEKNGCCVGGGFDETLAFSGRLTGFNIWDHVLNSNEEIRETGGAESCHIR 319
E_PTX3_sp        VVPEGGILQIGQEKNGCCVGGGFDETLAFSGRLTGFNIWDHVLNSNEEIRETGGAESCHIR 226
H_PTX3           IVPEGGILQIGQEKNGCCVGGGFDETLAFSGRLTGFNIWDHVLNSNEEIRETGGAESCHIR 360
                :*****:*****:*****:*****:*****:*****:*****

E_PTX3_full      GNVVGGVGTETIQPHGGAQYVS- 340
E_PTX3_sp        GNVVGGVGTETIQPHGGAQYVS- 247
H_PTX3           GNVVGGVGTETIQPHGGAQYVS- 381
                **:*****:*****:*****
    
```

Figure 2. Alignment analysis of amino acid (aa) residues for equine PTX3 full length (E_PTX3_full), spliced (E_PTX3_sp) and human PTX3 (ptx3_H). *Residues in that column are identical in all sequences in the alignment. (:) Conserved substitutions are observed. (.) Semi-conserved substitutions are observed. The pentraxin canonical signature (H×C×S/TW×S/T) is underlined and the two cysteines conserved in all the members of the pentraxin family are in bold. The N-glycosylation Asn site is in bold italics.

was no significant variation between the different conditions, neither in cell lysates nor in culture supernatant (results not shown).

4. DISCUSSION

The equine *PTX3* gene, located on equine chromosome 19 seems to be organized in three exons separated by two introns. The two bands detected by Western blot, at 32 and 42 kDa strongly suggest an alternative splicing. This result is supported by the fact that our cDNA sequence obtained for *PTX3* aligned perfectly with *Equus caballus* cDNA clone LeukoN4_5_F08_A026_5' (accession number: CD464905). To the best of our knowledge, it is the first time *PTX3* alternative splicing is

reported. Whether this event is due to the 120 bp deletion in the N-terminal domain, and is thus specific to the horse, or occurs in all species remains to be determined.

The C-terminal pentraxin-like domain of equine *PTX3* protein is well conserved. It shares 94% of conserved aa and a similar predicted three-dimensional model with the human protein [14]. This argues for a conserved function of this domain between species.

The C-terminal extremity is implicated in the interaction with C1q and the subsequent activation of the complement [13]. The antiangiogenic function of the protein is related to its N-terminal extremity [3]. Moreover, binding of *PTX3* to Factor H depends on interactions with both domains [4]. Thus, the alternative forms of the protein observed in the horse

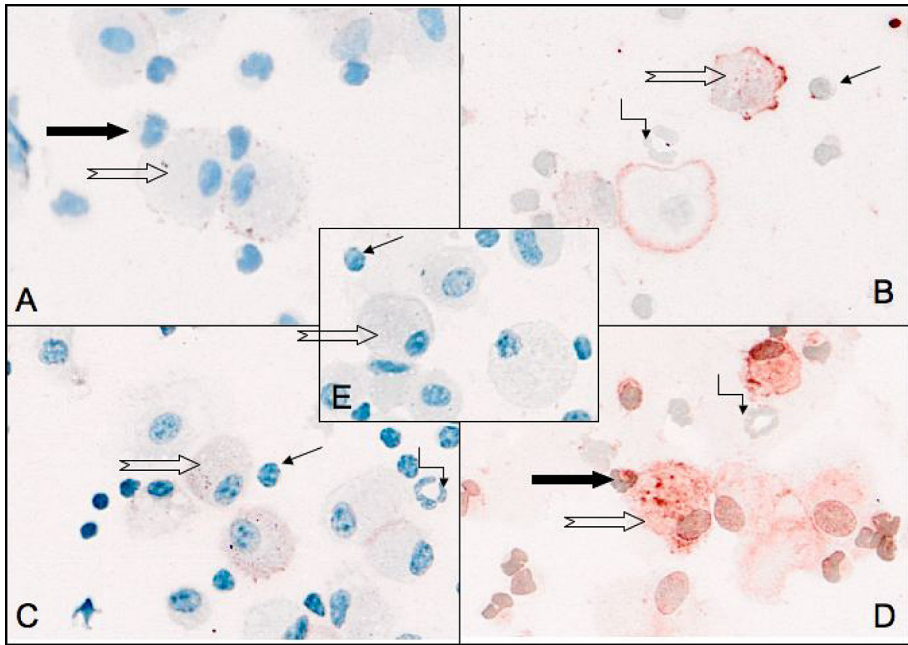


Figure 3. PTX3 expression in BALF cells. Large straight black arrows indicate young neutrophils, empty arrows indicate macrophages, straight fine black arrows indicate lymphocytes and angled black arrows indicate mature neutrophils. PTX3 immuno-staining appears in red. (A) BALF cells from a healthy horse at pasture. (B) BALF cells from a healthy horse after two weeks of dust exposure. (C) BALF cells from an R.A.O.-affected horse at pasture. (D) BALF cells from an R.A.O.-affected horse after two weeks of dust exposure. (E) BALF cells from the same horse (R.A.O.-affected horse after two weeks of dust exposure) as in (D) but using an IgG2B isotype control (control experiment; similar results were obtained by omitting the primary antibody). Magnification $\times 200$. (A color version of this figure is available online at www.vetres.org.)

provide an opportunity to gain better knowledge of the implication of each domain *in vivo*.

The N-linked glycosylation site on the C-terminal pentraxin-like domain of PTX3 is conserved in the horse. It is probably responsible for the 5 kDa higher molecular weight (32 and 42 kDa instead of 27 and 37 kDa respectively) observed on Western blot under reducing conditions when compared to the predicted molecular weight of the protein [1].

Using immuno-histochemistry, we determined that PTX3 protein is expressed in BALF macrophages, young neutrophils and bronchial epithelial cells in equines.

PTX3 over-expression observed in the BALF supernatant from R.A.O.-affected horses in crisis confirmed previous results obtained in

BALF cells [18]. In BALF cells, macrophages showed the strongest expression of PTX3. In particular, there was a strong expression of PTX3 by dust-activated foamy macrophages. These findings corroborate previous results [21], suggesting that the production of PTX3 is induced when macrophages differentiate into foam cells. Both R.A.O.-affected and healthy horses presented an exacerbation of PTX3 expression in their macrophages following dust exposure. This suggests that a certain degree of inflammation also occurs in healthy horses following dust exposure and that another cell type than macrophages is implicated in the difference in airway PTX3 expression between R.A.O.-affected horses and healthy horses upon dust challenge.

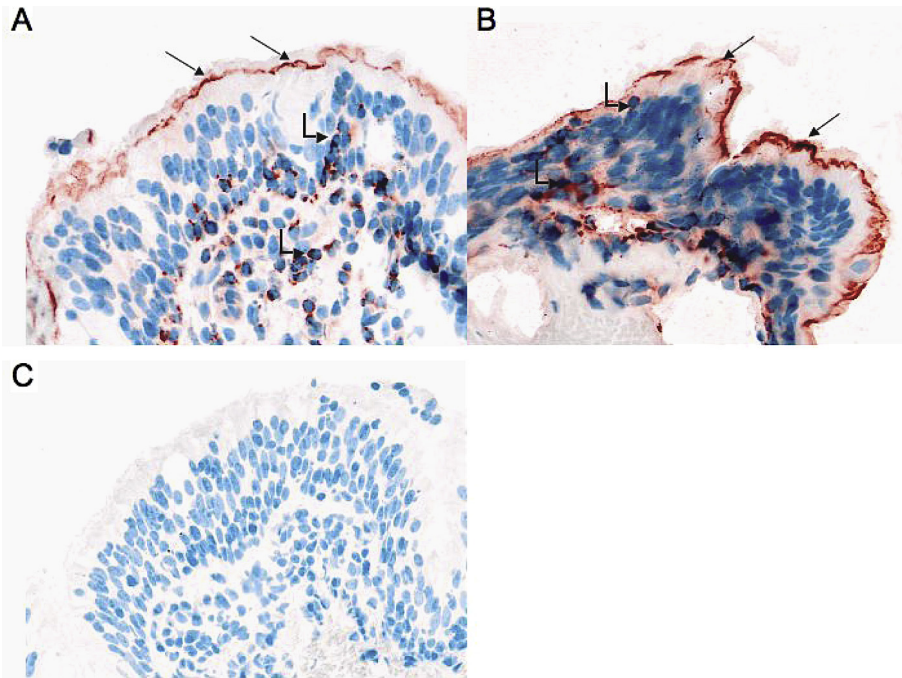


Figure 4. PTX3 expression in tissue samples. PTX3 was constitutively expressed in bronchial epithelial cells (straight arrows) and was localized at the apex just behind ciliated processes. It was also detected in infiltrative inflammatory cells (angled arrows). (A) Bronchial section from a healthy horse. (B) Bronchial section from a horse suffering from R.A.O. with over-expression of PTX3 in bronchial epithelial cells and an increase of the number of infiltrative inflammatory cells expressing PTX3. (C) Control experiment carried out using an IgG2 β isotype showed no staining of PTX3 (the same results were obtained by omitting the primary antibody). Magnification $\times 200$. (A color version of this figure is available online at www.vetres.org.)

More horses should be investigated to definitively confirm these results but a stronger PTX3 immunohistologic signal was noticed in the bronchial epithelial cells of horses suffering from R.A.O. in crisis, in comparison with controls. Considering epithelial cells as one of the major cell types in the airways, PTX3 produced at this level could play an important role in the inflammatory process. In lung epithelial cells, *PTX3* expression is regulated by a JNK-dependant, NF κ B-independent pathway [10]. A comparable mechanism could be involved in bronchial epithelial cells. Such a differential regulatory mechanism between hematopoietic and non-hematopoietic cells is supported by the completely different responses of these two different cell populations to glucocorticoid treatment [6].

This would be of particular interest because PTX3 expression in respiratory epithelial cells could thus be therapeutically targeted.

The fact that LPS, conidia and dust suspension challenges failed to induce PTX3 protein production in BALF cells *ex vivo* suggests that dust is not a direct inducer of PTX3. To support this finding, PTX3 expression was observed in rat lungs after LPS, hemorrhagic shock/resuscitation and mechanical ventilation but, *in vitro*, lung epithelial cells did not respond either to LPS or to mechanical stretch stimulation [16]. In addition, silica was shown to induce PTX3 release from monocytes + pneumocytes co-cultures but neither in pneumocytes nor in monocytes alone. Moreover, both silica and IL-1 β induced PTX3 expression in co-cultures but

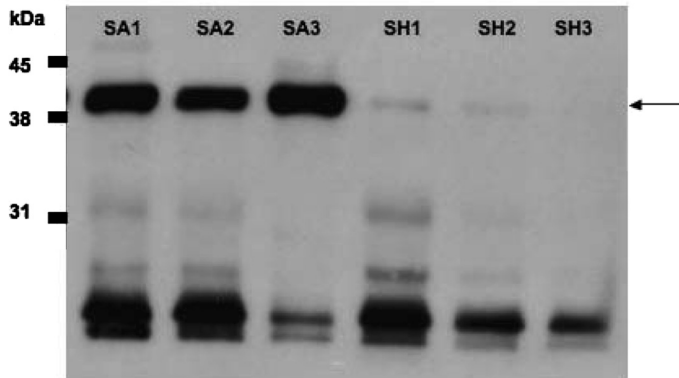


Figure 5. PTX3 in BALF supernatant (10× concentrated) from healthy horses (SH1, SH2, SH3) and R.A.O.-affected horses (SA1, SA2, SA3) after 2 weeks of dust exposure.

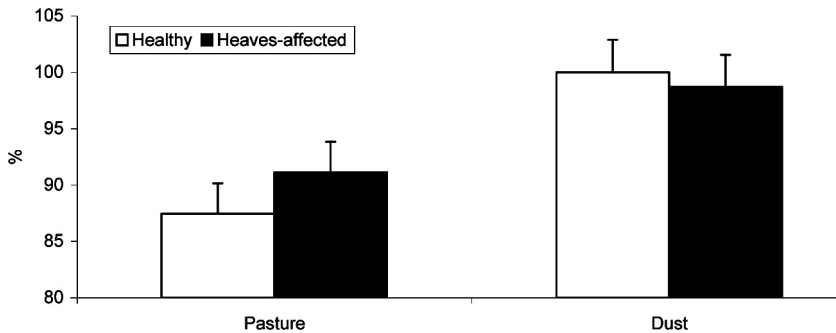


Figure 6. Relative gene expression of *PTX3* normalized to *GAPDH* in BALF macrophages. The results are given in % of the maximal value.

no difference in PTX3 levels was detected upon combined silica and IL-1 β treatment compared to IL-1 β [12]. In another study, TNF- α but neither LPS nor mechanical stretch induced PTX3 in A549 lung epithelial cells [7]. A similar effect of TNF α was also shown in BEAS-2B bronchial epithelial cells [10]. TNF- α and IL-1 β are over-expressed in R.A.O.-affected horses' airways [9]. These cytokines could thus be intermediate mediators for dust-induced PTX3 expression in BALF cells.

We demonstrate that alternative splicing occurs in *PTX3* in horses. We also provide further evidence that PTX3 is not directly induced by dust exposure but rather by enhancers of inflammatory mediators such as LPS, TNF- α

and IL-1 β . Finally, the regulatory pathway responsible for the induction of PTX3 in bronchial epithelial cells could be of interest because it could provide a respiratory-specific target for future treatments.

Acknowledgements. The authors thank Drs Michel Georges, Christophe Desmet and Dimitri Pirottin for helpful discussions and scientific advice in molecular biochemistry, Dr Nadine Antoine, Joelle Piret and Monique Henket for their help in immuno-histology and cytology, Dr Tatiana Art for the critical review, Dr Dorine Olejnik and Jean-Clément Bustin for their help with horse management, and Martine Leblond and Ilham Sbai for excellent technical and secretarial assistance. Eve Ramery is a research fellow at the "Fonds de la Formation à la Recherche dans l'Industrie et l'Agriculture", FRIA, Belgium.

REFERENCES

- [1] Bottazzi B., Vouret-Craviari V., Bastone A., De Gioia L., Matteucci C., Peri G., et al., Multimer formation and ligand recognition by the long pentraxin PTX3. Similarities and differences with the short pentraxins C-reactive protein and serum amyloid P component, *J. Biol. Chem.* (1997) 272:32817–32823.
- [2] Burnette W.N., “Western blotting”: electrophoretic transfer of proteins from sodium dodecyl sulfate–polyacrylamide gels to unmodified nitrocellulose and radiographic detection with antibody and radioiodinated protein A, *Anal. Biochem.* (1981) 112:195–203.
- [3] Camozzi M., Rusnati M., Bugatti A., Bottazzi B., Mantovani A., Bastone A., et al., Identification of an antiangiogenic FGF2-binding site in the N terminus of the soluble pattern recognition receptor PTX3, *J. Biol. Chem.* (2006) 281:22605–22613.
- [4] Deban L., Jarva H., Lehtinen M.J., Bastone A., Jokiranta T.S., Mantovani A., Meri S., Binding of the long pentraxin PTX3 to factor H: interacting domains and function in the regulation of complement activation, *J. Immunol.* (2008) 181:8433–8440.
- [5] Dias A.A., Goodman A.R., Dos Santos J.L., Gomes R.N., Altmeyer A., Bozza P.T., et al., TSG-14 transgenic mice have improved survival to endotoxemia and to CLP-induced sepsis, *J. Leukoc. Biol.* (2001) 69:928–936.
- [6] Doni A., Mantovani G., Porta C., Tuckermann J., Reichardt H.M., Kleiman A., et al., Cell-specific regulation of PTX3 by glucocorticoid hormones in hematopoietic and nonhematopoietic cells, *J. Biol. Chem.* (2008) 44:29983–29992.
- [7] Dos Santos C.C., Han B., Andrade C.F., Bai X., Uhlig S., Hubmayr R., et al., DNA microarray analysis of gene expression in alveolar epithelial cells in response to TNF- α , LPS, and cyclic stretch, *Physiol. Genomics* (2004) 19:331–342.
- [8] Garlanda C., Bottazzi B., Bastone A., Mantovani A., Pentraxins at the crossroads between innate immunity, inflammation, matrix deposition, and female fertility, *Annu. Rev. Immunol.* (2005) 23:337–366.
- [9] Giguere S., Viel L., Lee E., MacKay R.J., Hernandez J., Franchini M., Cytokine induction in pulmonary airways of horses with heaves and effect of therapy with inhaled fluticasone propionate, *Vet. Immunol. Immunopathol.* (2002) 85:147–158.
- [10] Han B., Mura M., Andrade C.F., Okutani D., Lodyga M., dos Santos C.C., et al., TNF α -induced long pentraxin PTX3 expression in human lung epithelial cells via JNK, *J. Immunol.* (2005) 175:8303–8311.
- [11] He X., Han B., Liu M., Long pentraxin 3 in pulmonary infection and acute lung injury, *Am. J. Physiol. Lung Cell. Mol. Physiol.* (2007) 292:1039–1049.
- [12] Hersheth J.I., Volden V., Schwarze P.E., Låg M., Refsnes M., IL-1 β differently involved in IL-8 and FGF-2 release in crystalline silica-treated lung cell co-cultures, *Part. Fibre Toxicol.* (2008) 13:5–16.
- [13] Inforzato A., Peri G., Doni A., Garlanda C., Mantovani A., Bastone A., et al., Structure and function of the long pentraxin PTX3 glycosidic moiety, fine-tuning of the interaction with C1q and complement activation, *Biochemistry* (2006) 45:11540–11551.
- [14] Inforzato A., Rivieccio V., Morreale A.P., Bastone A., Salustri A., Scarchilli L., et al., Structural characterization of PTX3 disulfide bond network and its multimeric status in cumulus matrix organization, *Biol. Chem.* (2008) 283:10147–10161.
- [15] Kagnoff M.F., Eckmann L., Epithelial cells as sensors for microbial infection, *J. Clin. Invest.* (1997) 100:6–10.
- [16] Okutani D., Han B., Mura M., Waddell T.K., Keshavjee S., Liu M., High-volume ventilation induces pentraxin 3 expression in multiple acute lung injury models in rats, *Am. J. Physiol. Lung Cell. Mol. Physiol.* (2007) 292:L144–L153.
- [17] Pfaffl M.W., A new mathematical model for relative quantification in real-time RT-PCR, *Nucleic Acids Res.* (2001) 29:2002–2007.
- [18] Ramery E., Closset R., Bureau F., Art T., Lekeux P., Relevance of using a human microarray to study gene expression in heaves-affected horses, *Vet. J.* (2008) 177:216–221.
- [19] Reynolds H.Y., Pulmonary host defenses, *Alcohol. Clin. Exp. Res.* (1995) 19:6–10.
- [20] Robinson N.E., Chairperson’s introduction: International Workshop on Equine Chronic Airway Disease, Michigan State University, 16–18 June 2000, *Equine Vet. J.* (2001) 33:5–19.
- [21] Savchenko A., Imamura M., Ohashi R., Jiang S., Kawasaki T., Hasegawa G., et al., Expression of pentraxin 3 (PTX3) in human atherosclerotic lesions, *J. Pathol.* (2008) 215:48–55.
- [22] Simon R.H., Paine R., Participation of pulmonary alveolar epithelial cells in lung inflammation, *J. Lab. Clin. Med.* (1995) 126:108–118.
- [23] Souza D.G., Soares A.C., Pinho V., Torloni H., Reis L.F., Teixeira M.M., Dias A.A., Increased mortality and inflammation in tumor necrosis factor-stimulated gene-14 transgenic mice after ischemia and reperfusion injury, *Am. J. Pathol.* (2002) 160:1755–1765.
- [24] St-Laurent J., Boulay M.E., Prince P., Bissonnette E., Boulet L.P., Comparison of cell fixation methods of induced sputum specimens: an immunocytochemical analysis, *J. Immunol. Methods* (2006) 308:36–42.
- [25] Tracey K.J., The inflammatory reflex, *Nature* (2002) 420:853–859.
- [26] Van Erck E., Votion D., Art T., Lekeux P., Qualitative and quantitative evaluation of equine respiratory mechanics by impulse oscillometry, *Equine Vet. J.* (2006) 38:52–58.
- [27] Watson M.L., White A.M., Campbell E.M., Smith A.W., Uddin J., Yoshimura T., Westwick J., Anti-inflammatory actions of interleukin-13: suppression of tumor necrosis factor- α and antigen-induced leukocyte accumulation in the guinea pig lung, *Am. J. Respir. Cell Mol. Biol.* (1999) 20:1007–1012.