



Modulation of the immunogenicity of the *Trypanosoma congolense* cysteine protease, congopain, through complexation with $\alpha 2$ -macroglobulin

Laura Elizabeth Joan Huson, Edith Authié, Alain François Boulangé, James Phillip Dean Goldring, Theresa Helen Taillefer Coetzer

► To cite this version:

Laura Elizabeth Joan Huson, Edith Authié, Alain François Boulangé, James Phillip Dean Goldring, Theresa Helen Taillefer Coetzer. Modulation of the immunogenicity of the *Trypanosoma congolense* cysteine protease, congopain, through complexation with $\alpha 2$ -macroglobulin. *Veterinary Research*, 2009, 40 (6), 10.1051/vetres/2009036 . hal-00903124

HAL Id: hal-00903124

<https://hal.science/hal-00903124>

Submitted on 11 May 2020

HAL is a multi-disciplinary open access archive for the deposit and dissemination of scientific research documents, whether they are published or not. The documents may come from teaching and research institutions in France or abroad, or from public or private research centers.

L'archive ouverte pluridisciplinaire **HAL**, est destinée au dépôt et à la diffusion de documents scientifiques de niveau recherche, publiés ou non, émanant des établissements d'enseignement et de recherche français ou étrangers, des laboratoires publics ou privés.

Modulation of the immunogenicity of the *Trypanosoma congolense* cysteine protease, congopain, through complexation with α_2 -macroglobulin

Laura Elizabeth Joan HUSON¹, Edith AUTHIÉ^{2,3}, Alain François BOULANGÉ^{1,2}, James Phillip Dean GOLDRING¹, Theresa Helen Taillefer COETZER^{1*}

¹ School of Biochemistry, Genetics and Microbiology, University of KwaZulu-Natal (Pietermaritzburg campus), Private Bag X01, Scottsville, 3209, South Africa

² Trypanosomoses humaines et animales, UMR-IRD/CIRAD 017, CIRAD-Emvt, 34398 Montpellier, France

³ UR086 Base, INRA, Centre de Tours, 37380 Nouzilly, France

(Received 27 February 2009; accepted 19 June 2009)

Abstract – The protozoan parasite *Trypanosoma congolense* is the main causative agent of livestock trypanosomosis. Congopain, the major lysosomal cysteine proteinase of *T. congolense*, contributes to disease pathogenesis, and antibody-mediated inhibition of this enzyme may contribute to mechanisms of trypanotolerance. The potential of different adjuvants to facilitate the production of antibodies that would inhibit congopain activity was evaluated in the present study. Rabbits were immunised with the recombinant catalytic domain of congopain (C2), either without adjuvant, with Freund's adjuvant or complexed with bovine or rabbit α_2 -macroglobulin (α_2 M). The antibodies were assessed for inhibition of congopain activity. Rabbits immunised with C2 alone produced barely detectable anti-C2 antibody levels and these antibodies had no effect on recombinant C2 or native congopain activity. Rabbits immunised with C2 and Freund's adjuvant produced the highest levels of anti-C2 antibodies. These antibodies either inhibited C2 and native congopain activity to a small degree, or enhanced their activity, depending on time of production after initial immunisation. Rabbits receiving C2- α_2 M complexes produced moderate levels of anti-C2 antibodies and these antibodies consistently showed the best inhibition of C2 and native congopain activity of all the antibodies, with maximum inhibition of 65%. Results of this study suggest that antibodies inhibiting congopain activity could be raised in livestock with a congopain catalytic domain- α_2 M complex. This approach improves the effectiveness of the antigen as an anti-disease vaccine candidate for African trypanosomosis.

trypanosomosis / congopain / α_2 -macroglobulin / anti-disease vaccine

1. INTRODUCTION

Bovine trypanosomosis (*nagana*) is a disease caused by tsetse-transmitted *Trypanosoma congolense*, *T. vivax* and/or *T. brucei brucei*. These extracellular haemoprotezoa are able to

survive in the bloodstream of infected cattle in the presence of continuous exposure to the host's immune system. Chronic wasting and anaemia are the most prominent features of animal trypanosomosis, but other pathologic effects are circulatory disturbances, leukopaenia, low serum complement levels, lymphoid tissue hyperplasia followed by hypoplasia and immunosuppression [38]. Trypanosomosis is

* Corresponding author: Coetzer@ukzn.ac.za

This is an Open Access article distributed under the terms of the Creative Commons Attribution-Noncommercial License (<http://creativecommons.org/licenses/by-nc/3.0/>), which permits unrestricted use, distribution, and reproduction in any noncommercial medium, provided the original work is properly cited.

consequently a severe constraint to animal agriculture in many parts of sub-Saharan Africa [25].

There are three control strategies for trypanosomiasis in cattle that are often used concomitantly: trypanocidal drugs, vector control and the use of trypanotolerant cattle, none of which is fully effective in the long term [25]. The control strategy with the greatest impact would be vaccination. However, due to the antigenic variation of the parasite surface antigens, attributed to variable expression of antigenic forms of the variable surface glycoprotein (VSG), development of a vaccine is proving to be a difficult task. A vaccine based on VSG would have to cover the entire repertoire of antigenic types, which is not feasible [37]. Invariant antigens that have thus far been identified as potential vaccine candidates include microtubule-associate protein p15 from *T. b. brucei* [5, 32] and β -tubulin from *T. brucei* and *T. evansi* [21, 23, 24]. Vaccination studies in mice have shown that these proteins may provide protection against challenge from *T. b. brucei* (and *T. evansi* and *T. equiperdum* for β -tubulin) [21, 23, 24, 32], but thus far, these studies have excluded homologues from *T. congolense* or *T. vivax*.

An alternative approach for a vaccine is to direct the immune response to parasite antigens that play a role in the pathology of the disease. This type of vaccine may not affect the survival of the parasite, but would neutralise pathogenic factors, thereby lessening the pathological effects and possibly inducing a state of trypanotolerance [3, 32], as naturally exhibited by some African breeds of cattle [29]. It has been suggested that congopain, a cysteine protease of *T. congolense*, has a pathogenic role in trypanosomiasis by degrading host proteins and interfering with other host processes [36]. Levels of anti-congopain antibodies have been shown to correlate with resistance to the disease in trypanotolerant cattle [3]. As IgG antibody (and Fab fragments from this IgG) produced by trypanotolerant cattle during *T. congolense* infection inhibit congopain activity, it has been suggested that this antibody may mitigate the pathology, thus contributing to mechanisms of trypanotolerance [4, 20].

Congopain is a cathepsin L-like enzyme that shares 68% sequence identity in its central catalytic domain and similar enzymatic specificity with the *T. cruzi* cysteine protease, cruzipain [11]. Congopain has a 130-amino acid long C-terminal extension linked to the catalytic domain by a proline-rich hinge region, which similarly occurs in other trypanosomal cysteine proteases like cruzipain [10], but not mammalian cysteine proteases. The C-terminal extension is highly immunogenic, but considered unlikely to elicit antibodies that inhibit the activity of the enzyme [9]. C2, a recombinantly expressed truncated form of congopain which excludes the C-terminal extension, has been used in a cattle immunisation trial [4]. Immunised cattle developed anti-C2 antibodies that partially inhibited the enzymatic activity of congopain. Following challenge with the parasite there was no effect on the development of infection or acute anaemia. However, immunised cattle maintained or gained weight during infection and exhibited less severe anaemia and leukopaenia during the chronic phase of the disease. Immunised cattle also developed prominent IgG responses to trypanosomal antigens such as VSG, which is reminiscent of trypanotolerance [3]. From that study it appeared that congopain may be involved in the mechanism of trypanosome-induced immunosuppression. Based on these results C2 was used in the present study for immunisations with the hope to raise antibodies capable of inhibiting the enzyme activity.

It has previously been shown that complexing antigen with α_2 -macroglobulin (α_2 M) results in enhanced antibody production, presumably by improved delivery of antigen to antigen presenting cells via the α_2 M receptor [1, 13]. α_2 M is a high molecular weight (mol. wt.) plasma glycoprotein that is capable of inhibiting the activity of proteases from all classes [6]. When the bait region of α_2 M is cleaved by a protease, the protease becomes trapped within the α_2 M molecule [6]. Once this transformation has taken place, receptor recognition sites become exposed on the α_2 M molecule and it is rapidly taken up by antigen presenting cells expressing the α_2 M receptor, such as macrophages and dendritic cells [18]. Here we report on complexing C2 with rabbit or bovine α_2 M and producing antibodies

in rabbits against these complexes. In control experiments C2 was injected either alone, or mixed with Freund's adjuvant. The resulting antibodies were assayed for inhibition of C2 and native congopain activity.

2. MATERIALS AND METHODS

2.1. Materials

Sephacryl S-300 HR, hide powder azure, benzoyl (Bz)-Pro-Phe-Arg-pNA, Freund's complete and incomplete adjuvant, tosyl phenylalanyl chromomethylketone-treated trypsin, L-trans-epoxysuccinyl-leucylamido(4-guanidino)butane (E-64) and benzoyloxycarbonyl (Z)-Phe-Arg-7-amino-4-methylcoumarin (AMC) were purchased from Sigma-Aldrich (St. Louis, USA). Horseradish peroxidase-conjugated goat anti-rabbit IgG was purchased from Jackson Immunochemicals (Westgrove, USA). 2, 2'-azino-bis(3-ethylbenzthiazoline-6-sulphonic acid) (ABTS) and BSA were purchased from Roche Diagnostics (Mannheim, Germany). PEG 6 000 was purchased from Saarchem (Johannesburg, South Africa), Triton X-100 from BDH (Poole, England) and Tween 20 from Merck (Darmstadt, Germany). Bovine α_2 M was isolated from citrated bovine plasma, and rabbit α_2 M was isolated from EDTA-treated rabbit plasma, by the same three-step procedure. Briefly, plasma was precipitated by PEG 6 000 [7], and α_2 M was purified by zinc chelate chromatography followed by gel filtration on Sephacryl S-300 HR [35]. Bovine α_2 M was stored at -20°C until use, and rabbit α_2 M was stored on ice since it is not stable to freeze-thaw cycles [13]. Native congopain was purified as described [2] and recombinant C2 was expressed in *Pichia pastoris* (manuscript in preparation). All other reagents were of the highest purity obtainable and purchased from Sigma-Aldrich or Merck.

2.2. Protein determination

The concentration of proteins in solution were determined in an Ultrospec 2100 pro spectrophotometer (Amersham Pharmacia Biotech, Piscataway, USA) according to the modified Bradford method [33], or by using $A_{280\text{ nm}}^{1\%, 1\text{ cm}} = 10$ for bovine α_2 M [30a], and $A_{280\text{ nm}}^{1\%, 1\text{ cm}} = 14.3$ for rabbit IgG [17].

2.3. Titration of α_2 M

Bovine and rabbit α_2 M were titrated against trypsin to determine their respective active concentration

following purification [35]. α_2 M (50 pmol) was incubated with increasing amounts of trypsin (10–90 pmol) in 100 mM Tris-HCl buffer, pH 8, 10 mM CaCl_2 , 0.05% (v/v) Triton X-100 for 20 min at room temperature. Residual trypsin activity was measured by incubation with hide powder azure (12.5 mg/mL). Undigested substrate was removed by centrifugation (13 700 g, 5 min, room temperature). The absorbance of the supernatant at 595 nm was plotted against trypsin concentration. The concentration of trypsin required to saturate the inhibitory capacity of 50 pmol α_2 M was multiplied by two to reflect the percentage inhibitory activity.

2.4. Determination of active enzyme concentration with E-64

Congopain and C2 (0.1–1 μM) diluted with 0.1% (v/v) Brij-35 were titrated against 0.1 μM increments of E-64 from 0–1 μM and incubated for 30 min at 37°C in activation buffer (100 mM Bis-Tris buffer, pH 6.0, 4 mM Na_2EDTA , 0.02% (w/v) NaN_3 , 8 mM DTT) [8]. Residual enzyme activity was measured with Z-Phe-Arg-AMC (20 μM final concentration), reading excitation at 360 nm and emission at 460 nm in a 7620 microplate fluorometer from Cambridge Technology (UK).

2.5. Native and SDS-PAGE

SDS-PAGE was performed according to Laemmli [19] on 7.5% gels. Native PAGE was performed in the same manner on 5% gels but with the exclusion of SDS from the gel and running buffer.

2.6. Inhibition of C2 activity by α_2 M

Assays were performed to test the effect of bovine α_2 M on the hydrolysis of peptide and protein substrates by C2. To assay against a protein substrate, C2 (100 pmol), activated in activation buffer, was incubated with increasing amounts of α_2 M (0–200 pmol) and incubated for 20 min at 37°C . C2 activity was assayed with hide powder azure as described above.

To assay against a peptide substrate, C2 (20 pmol), activated in activation buffer, was incubated with increasing amounts of α_2 M (0–40 pmol) for 20 min at 37°C . Activity of C2 was assayed with Bz-Pro-Phe-Arg-pNA (3 mM), and hydrolysis was followed at 405 nm using an Ultrospec 2100 pro spectrophotometer (Amersham Pharmacia Biotech).

2.7. Immunisation of rabbits with C2

C2 (80 µg) was activated in activation buffer for 5 min, combined with a 1.5 times molar excess of either rabbit or bovine α_2 M (3.2 mg), and incubated for 1 h at 37 °C. Subsequently, the samples were divided into 4 equal aliquots, for 4 immunizations, each containing the equivalent of 20 µg C2.

C2-rabbit- and bovine- α_2 M complexes were each made up to 2 mL with sterile PBS for immunisation. C2 (20 µg) was made up to 1 mL with sterile PBS, and emulsified in a 1:1 ratio with Freund's adjuvant for immunisation (complete adjuvant for the initial immunisation and incomplete adjuvant for the booster immunisations). For immunisation without adjuvant, C2 (20 µg) was diluted to 2 mL with sterile PBS.

Eight rabbits of mixed breed were immunised by subcutaneous injection at multiple, well-separated sites on the back with either C2 alone (rabbits A1 and A2), C2 in Freund's adjuvant (F1 and F2), C2-rabbit α_2 M complexes (R1 and R2), or C2-bovine α_2 M complexes (B1 and B2). Each rabbit received a total of 1 mL, i.e. an equivalent of 10 µg C2 per immunisation. Booster injections were given at weeks 2, 4 and 6 and rabbits were bled from the mid-ear artery prior to immunisation and at weeks 3, 6, 9 and 11. Rabbit B1 was not bled at week 3. Ethical approval for these procedures was obtained from the University of KwaZulu-Natal animal ethics committee (reference AE/Coetzer/01/02).

2.8. Determination of anti-C2 antibody production by ELISA

C2 or native congopain was coated onto the wells of 96 well Nunc-ImmunoTM ELISA plates at a concentration of 1 µg/mL in 50 mM carbonate buffer, pH 6 for 16 h at 4 °C. Non-specific binding of antibody was prevented by blocking with 0.5% (w/v) BSA-PBS (blocking buffer) for 1 h at 37 °C. Wells were washed 3 times with 0.1% (v/v) PBS-Tween 20 in between each step. Rabbit IgG, isolated by PEG 6 000 precipitation [30b], was diluted in blocking buffer and incubated in the wells for 2 h at 37 °C (100 µL per well). Rabbit IgG was titrated from 500 to 31.25 µg/mL (weeks 6, 9 and 11) and from 200 to 6.25 µg/mL (3 weeks) as a result of the small amounts of serum collected at 3 weeks. The HRPO-labelled detection antibody, goat anti-rabbit IgG, was diluted 1:30 000 in blocking buffer and incubated (120 µL per well) for 1 h at 37 °C. Substrate solution, 0.05% (w/v) ABTS, 0.0015% (v/v) H₂O₂, in 150 mM citrate-phosphate, pH 5,

was added (150 µL per well) and colour was allowed to develop in the dark. The A₄₀₅ of each well was measured with an automated Versamax microplate reader using SOFTmax[®] software from Molecular Devices (Menlo Park, CA, USA).

2.9. Assays for inhibition of C2 and congopain activity by antibodies

The inhibition of C2 and congopain activity by anti-C2 IgG was assayed in duplicate in a stopped-time assay format with serial dilutions of IgG from 1 mg/mL to 125 µg/mL. Assays were performed in duplicate. C2 (80 ng) or native congopain (100 ng), diluted to 75 µL in 0.1% Brij, was combined with 75 µL of IgG, diluted serially with 200 mM sodium phosphate buffer, pH 7.2, 4 mM Na₂EDTA, 0.1% (v/v) Tween-containing 40 µg/mL lima bean trypsin inhibitor (has no effect on C2 [40]) to inhibit residual plasma kallikrein activity against Z-Phe-Arg-AMC that may remain in IgG samples – to yield final IgG concentrations of 1 mg/mL to 125 µg/mL. The samples were incubated for 15 min at 37 °C. Aliquots (50 µL) were removed from the incubation mixture and combined with 25 µL of a 200 mM sodium phosphate buffer, pH 7.2, 4 mM Na₂EDTA, 0.1% (v/v) Tween, 8 mM DTT, and activated for 1 min at 37 °C. Substrate was added (25 µL) and the samples incubated for 5 min at 37 °C. The reaction was stopped with 100 mM monochloroacetate, 30 mM Na-acetate, 70 mM acetic acid, pH 4.3, before fluorescence was read (excitation at 360 nm and emission at 460 nm) in a 7620 microplate fluorometer from Cambridge Technology. Inhibition was expressed as a percentage of the activity in the presence of non-immune rabbit IgG at the same concentration.

3. RESULTS

3.1. Interaction of C2 with bovine α_2 M

In order to study the interaction between congopain and the protease inhibitor, α_2 M, the extent of inhibition of C2 activity by α_2 M was assayed against both high (hide powder azure) and low (Bz-Pro-Phe-Arg-pNA) mol. wt. substrates. When proteases are trapped within the α_2 M tetramer, high mol. wt. substrates are excluded from interaction with the protease, resulting in complete inhibition, whereas low mol. wt. substrates are able to access the

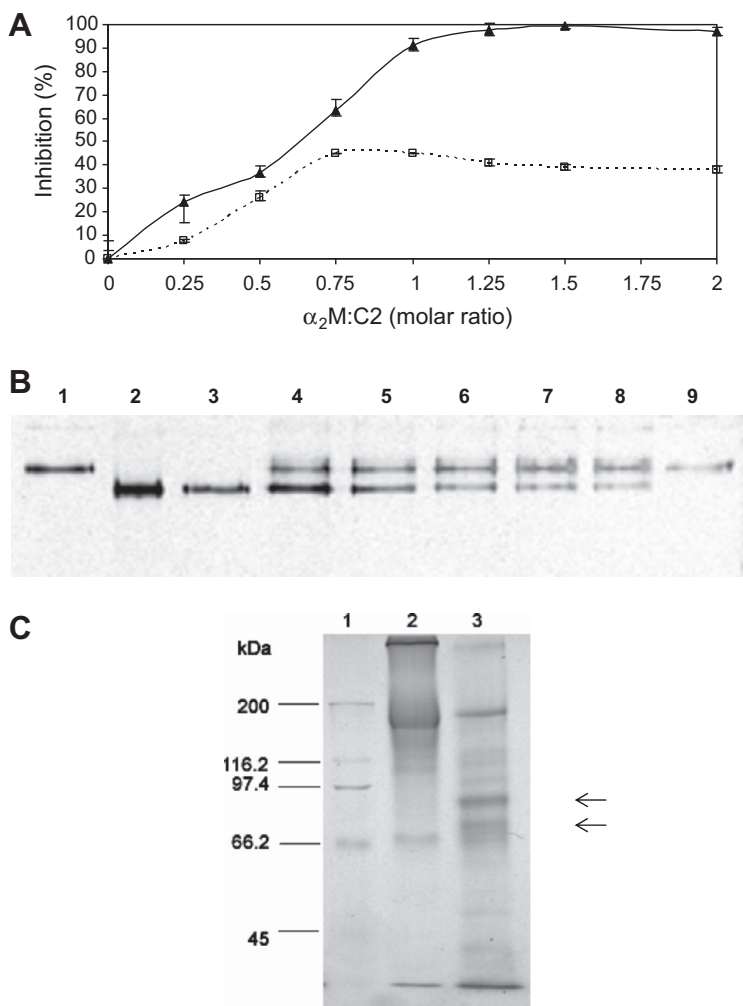


Figure 1. The interaction of the recombinant catalytic domain of congopain (C2) with bovine α_2 M. (A) The effect of increasing amounts of α_2 M on the activity of C2 against hide powder azure (▲) and Bz-Pro-Phe-Arg-pNA (□). Different concentrations of α_2 M were incubated with C2 (100 pmol for hide powder azure assay; 20 pmol for Bz-Pro-Phe-Arg-pNA assay) at molar ratios of 0.25:1, 0.5:1, 0.75:1, 1:1, 1.25:1, 1.5:1 and 2:1 for 20 min at 37 °C. Proteolytic activity was determined by the extent of hydrolysis of substrate compared to that of a C2 control with no α_2 M (100% activity), and expressed as a percentage inhibition. Error bars represent the \pm SEM ($n = 3$). (B) Non-denaturing PAGE (5% gel) analysis of the interaction between bovine α_2 M and activated C2. Lanes 1 and 9 500 ng α_2 M; lanes 2–8, α_2 M (500 ng) was incubated with increasing amounts of C2 (11–91 ng), corresponding to molar ratios of α_2 M:C2 of 0.25:1, 0.5:1, 0.75:1, 1:1, 1.25:1, 1.5:1 and 2:1 in the respective lanes. Proteins were silver stained. (C) Reducing SDS-PAGE (7.5% gel) after reaction of bovine α_2 M with activated C2. Lane 1, Bio-Rad molecular weight markers consisting of myosin (200 kDa), β -galactosidase (116.2 kDa), phosphorylase b (97.4 kDa), bovine serum albumin (66.2 kDa), and ovalbumin (45 kDa); lane 2, α_2 M (10 μ g); lane 3, C2- α_2 M complex (10.372 μ g). Proteins were stained with Coomassie blue R-250. Arrows represent bands at 95 and 85 kDa.

protease's active site, resulting in partial inhibition [6]. Consistent with this observation bovine α_2 M inhibited 99% of the proteolytic activity of C2 towards hide powder azure and 45% of the peptidolytic activity against Bz-Pro-Phe-Arg-pNA (Fig. 1A). In contrast to cathepsin L and papain (result not shown), the peptide substrate experienced restricted access to the active site of congopain (15% inhibition at equimolar concentrations with α_2 M), and to a greater extent to that of C2, when in the α_2 M complex. A similar observation was made for cruzipain when assayed for inhibition with human α_2 M using the same peptide substrate [31]. From the inhibition assays it appeared that the enzyme and inhibitor interact in an equimolar ratio, since no further inhibition of C2 activity was observed above this ratio.

The transformation of α_2 M from the native "slow" to the "fast" form after interaction with C2 (i.e. the change of α_2 M to a more compact conformation after cleavage of the bait region) was illustrated by non-denaturing PAGE (Fig. 1B). There was a clearly observed increase in the mobility of α_2 M in the gel upon reaction with C2 at α_2 M:C2 molar ratios of 0.25:1 and 0.5:1 (lanes 2 and 3). For α_2 M:C2 molar ratios between 0.75:1 and 2:1 (lanes 4–8), decreasing proportions of α_2 M interacted with C2 as shown by the decreasing amounts of the "slow" compared to "fast" forms of α_2 M. Reducing SDS-PAGE of the α_2 M-C2 complex revealed that the α_2 M bait region had been cleaved by the enzyme C2 (Fig. 1C) as evidenced by the presence of protein bands at approximately 95 and 85 kDa, representing the sizes of the fragments produced under reducing conditions when the bait region has been cleaved [35].

3.2. Evaluation of rabbit anti-C2 antibody production by ELISA

In order to compare the levels of antibodies produced over time in rabbits immunised with C2 in the absence and presence of adjuvants, ELISA plates were coated with C2 or native congopain and indirect ELISA conducted. Rabbits A1 and A2, immunised with C2

without the use of adjuvant, showed no discernible levels of anti-C2 IgG (Fig. 2), except at week 6 for rabbit A1 (Fig. 2A), when a low level of antibodies was produced. Rabbits B1 and B2, immunised with bovine α_2 M-C2 complexes, showed moderate levels of anti-C2 IgG throughout the test period (Fig. 2). Rabbits F1 and F2, immunised with C2 in Freund's adjuvant, consistently showed the highest levels of anti-C2 IgG, with the exception of F1 at week 3 (result not shown). Rabbits R1 and R2, immunised with rabbit α_2 M-C2 complexes, showed differing anti-C2 IgG responses. At week 3, rabbit R1 showed high levels of anti-C2 IgG whereas R2 showed no anti-C2 IgG (result not shown). At week 6, both rabbits showed moderate levels of anti-C2 IgG, with levels in R1 higher than those in R2 (Fig. 2A), a trend that was repeated at week 9 (result not shown). At week 11, the anti-C2 IgG levels in R1 had decreased to become level with those in R2 (Fig. 2B).

Recognition of native congopain by anti-C2 antibodies collected over the immunisation period was assayed in an ELISA using a single antibody concentration of 100 μ g/mL (Fig. 3). The anti-C2 antibodies showed good recognition of native congopain. The highest antibody levels were observed for weeks 3 and 6, after which antibody levels declined. Generally, these results agree with those shown in Figure 2 for the recognition of C2 in an ELISA, except that there appears to be slightly better recognition of native congopain by antibodies from rabbits immunised with C2 without any adjuvant.

3.3. Inhibition of C2 and congopain activity by rabbit anti-C2 antibodies

In order to determine the effect of the antibodies on C2 activity, the unactivated enzyme was incubated with the respective purified rabbit IgG samples before assaying for residual activity with the fluorescent substrate Z-Phe-Arg-AMC. In control incubations, purified non-immune rabbit IgG was incubated with C2. Negative percentage change in activity values (Fig. 4) suggest that the addition of anti-C2 IgG resulted in reduced hydrolysis of the

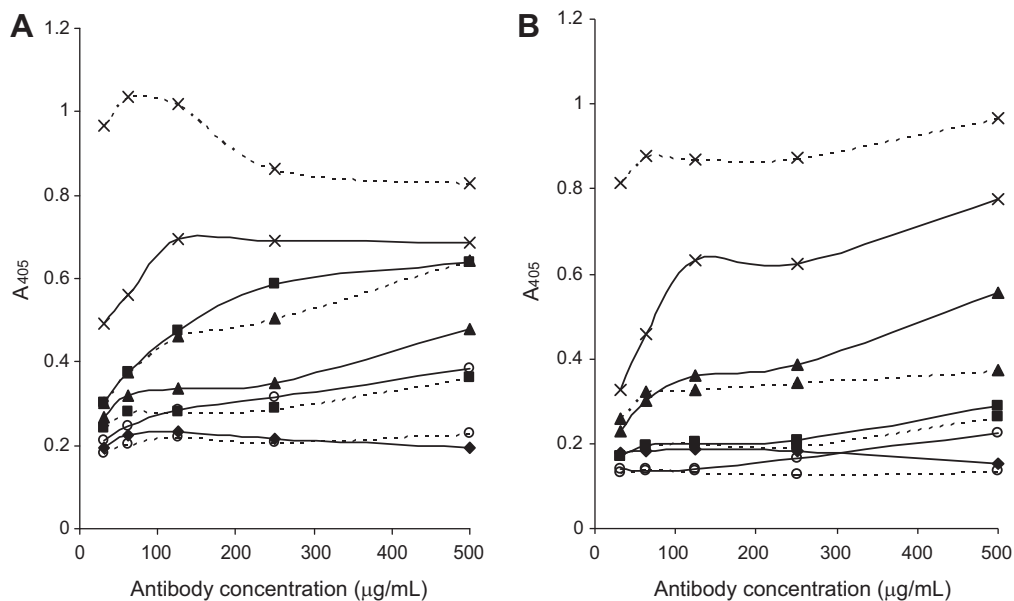


Figure 2. ELISA of anti-C2 antibodies produced at week 6 (A) and 11 (B) by rabbits immunised with C2 alone, or in combination with different adjuvants. C2 was coated onto ELISA plates (1 µg/mL in 50 mM carbonate buffer, pH 6, 16 h, 4 °C) and probed for recognition by IgG collected at weeks 6 and 11 from rabbit A1 (○; solid line), A2 (○; broken line), B1 (▲; solid line), B2 (▲; broken line), F1 (×; solid line), F2 (×; broken line), R1 (■; solid line), and R2 (■; broken line), and non-immune IgG (◆). Absorbance readings at 405 nm represent the average of two experiments. Goat anti-rabbit IgG-HRPO labelled antibodies were used for detection and ABTS/H₂O₂ as substrate as described in Materials and methods.

substrate compared to samples containing non-immune IgG, i.e. decreased enzyme activity. Assays of the effect of antibody concentration on enzyme inhibition generally showed a decrease in % inhibition with a decrease in antibody concentration (Fig. 4).

Week 3 IgG generally had little effect on the activity of C2 with antibodies from rabbits immunised with bovine α_2 M-C2 complexes (B2) showing the only significant inhibition of C2 activity (result not shown). In the assay of week 6 IgG (Fig. 4A), IgG from all rabbits resulted in inhibition of the activity of C2 against the substrate, although the inhibitory effect of IgG from rabbits immunised with C2 and Freund's adjuvant (F2) was minimal. The best inhibition was seen for IgG from rabbits immunised with rabbit α_2 M-C2 complexes (R1 and R2), followed by IgG from rabbits immunised with bovine α_2 M-C2 complexes (B1 and B2). IgG

from rabbits immunised with C2 trituated with Freund's adjuvant (F1 and F2) and immunised without adjuvant (A1 and A2) comparably showed the least inhibition. In the assay of week 9 IgG (result not shown), inhibition of C2 activity against the substrate was only observed for IgG from rabbits immunised with rabbit α_2 M-C2 complexes (R1 and R2) and bovine α_2 M-C2 complexes (B1), and to a small degree, IgG from rabbits immunised with C2 and Freund's adjuvant (F1) and without any adjuvant (A1). The IgG from the other rabbits appeared to enhance the activity of C2 against the substrate. In the assay of week 11 IgG (Fig. 4B), the inhibition profile was very similar to that seen for week 6 IgG. The only exception was that week 11 IgG from rabbits immunised with C2 without adjuvant (A1 and A2) enhanced the activity of C2 to a small degree.

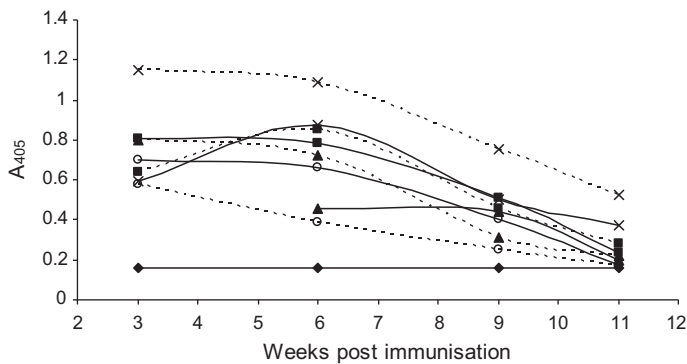


Figure 3. Recognition of native congopain in an ELISA by anti-C2 antibodies produced at week 3, 6, 9 and 11 by rabbits immunised with C2 alone, or in combination with different adjuvants. Native congopain was coated onto ELISA plates (1 µg/mL in 50 mM carbonate buffer, pH 6, 16 h, 4 °C) and probed for recognition by IgG (100 µg/mL) collected at weeks 3, 6, 9 and 11 from rabbit A1 (○; solid line), A2 (○; broken line), B1 (▲; solid line), B2 (▲; broken line), F1 (×; solid line), F2 (×; broken line), R1 (■; solid line), and R2 (■; broken line), and non-immune rabbit IgG (◆). Absorbance readings at 405 nm represent the average of two experiments. Goat anti-rabbit IgG-HRPO labelled antibodies were used for detection and ABTS/H₂O₂ as substrate as described in Materials and methods. Rabbit B1 was not bled at week 3.

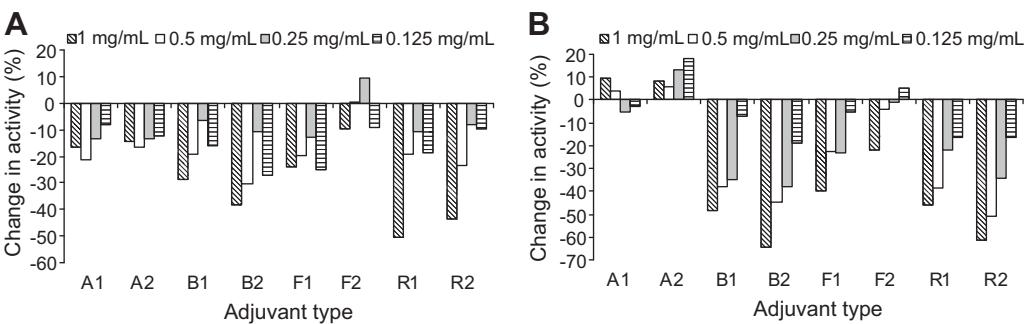


Figure 4. Effect on C2 activity of varying concentrations of anti-C2 antibodies from weeks 6 (A) and 11 (B) in the immunisation protocol. C2 (80 ng) was incubated with anti-C2 antibodies (0.125 to 1 mg/mL) from rabbits A1, A2, B1, B2, F1, F2, R1 and R2 collected at weeks 6 and 11 at pH 7.2 (15 min at 37 °C). Residual activity against Z-Phe-Arg-AMC was determined as described in Materials and methods. Each plot represents the mean of two experiments. Negative % change in activity indicates inhibition of enzyme activity.

It was deemed important to determine whether IgG that inhibited Z-Phe-Arg-AMC hydrolysis by C2 would also be inhibitory towards the proteolytic activity of congopain, the native form of the enzyme purified from trypanosome lysates. The amount of congopain available was limited, therefore only IgG from week 6 was assayed. As was seen for the assay

of the effect of week 6 IgG on C2 (Fig. 4A), IgG from rabbits immunised with rabbit α_2 M-C2 complexes (R1 and R2) was the most inhibitory, followed by IgG from rabbits immunised with bovine α_2 M-C2 complexes (B1 and B2) (Fig. 5).

The highest percentage of inhibition of C2 hydrolysis of Z-Phe-Arg-AMC obtained in the

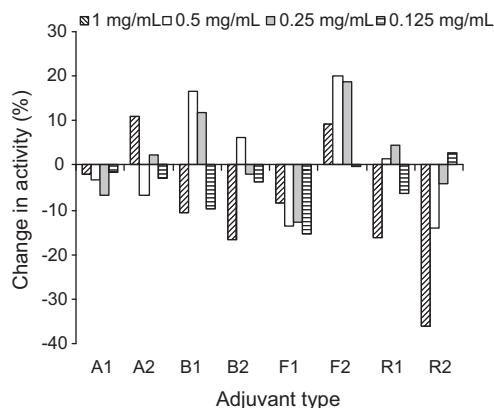


Figure 5. Effect on native congopain activity of varying concentrations of anti-C2 antibodies from weeks 6 in the immunisation protocol. Native congopain (100 ng) was incubated with anti-C2 antibodies (0.125 to 1 mg/mL) from rabbits A1, A2, B1, B2, F1, F2, R1 and R2 collected at weeks 3, 6, 9 and 11 at pH 7.2 (15 min at 37 °C). Residual activity against Z-Phe-Arg-AMC was determined as described in Materials and methods. Each plot represents the mean of two experiments. Negative % change in activity indicates inhibition of enzyme activity.

present study were 61% and 65%, which were observed for week 11 IgG isolated from rabbits immunised with C2 complexed to rabbit and bovine α_2 M respectively (Fig. 4B). Antibodies produced by rabbits immunised with C2 in Freund's adjuvant were generally found to weakly inhibit congopain and C2 with a maximum of 40%. Curiously the same antibodies from the one rabbit enhanced the activity of congopain against Z-Phe-Arg-AMC (Fig. 5, F2). From the data obtained, it appeared that in general IgG fractions isolated from rabbits immunised with rabbit α_2 M-C2 complexes were the most inhibitory towards the proteolytic activity of C2 and congopain.

4. DISCUSSION

There is currently no vaccine available for trypanosomosis in cattle, and although there

are control strategies in place such as trypanocidal drugs and tsetse control, the disease is still a constraint to livestock production in many parts of Africa [25]. Due to the ability of the parasite to evade the host's immune system by antigenic variation and immunosuppression [37], the development of an anti-disease vaccine, that would limit the pathogenic effects of infection rather than suppress parasite growth, constitutes an attractive alternative to conventional vaccination [4, 20]. Congopain has been identified as a pathogenic factor of trypanosomosis [3], and the purpose of the present study was to identify an adjuvant system that would elicit an antibody response to congopain to inhibit its enzyme activity and thus its pathogenic effects.

Our investigation into the interaction of C2, the truncated catalytic domain of congopain, with bovine α_2 M showed that active C2 cleaves the bait region of bovine α_2 M. This cleavage resulted in inhibition of C2 by trapping of the protease within the α_2 M tetramer. C2 and bovine α_2 M appear to interact in an equimolar ratio. This information was used for the preparation of complexes of C2 with bovine α_2 M and rabbit α_2 M for the production of anti-C2 antibodies in rabbits.

All eight rabbits were immunised with the same amount of C2, i.e. 10 μ g per immunisation. However, the titres of anti-C2 antibodies, as determined by ELISA, varied according to the type of adjuvant used in the immunisation procedure. In the absence of adjuvant, the levels of anti-C2 antibodies were barely detectable. Freund's adjuvant elicited a strong antibody response against the small amount of C2 used for immunisation, but the efficacy of these antibodies in inhibiting the activity of C2 in vitro was limited. The anti-C2 antibody titres observed where α_2 M (both bovine and rabbit) was used as an adjuvant were moderate, and yet, these antibodies showed the best inhibition of the C2 mediated hydrolysis of Z-Phe-Arg-AMC.

These anti-rabbit and bovine α_2 M complexed-C2 antibodies inhibited whole (native) congopain activity in addition to that of the (recombinant) catalytic domain of congopain, C2. This was imperative since it would be the

native cysteine proteinase that these antibodies would encounter in vivo upon challenge with the parasite. Although the optimal pH values for C2 and native congopain activity are reported to be 6 and 6.4 respectively [9, 11], physiological pH was used in the present study to obtain results that would have application to a vaccine in vivo.

Rabbits immunised with rabbit α_2 M complexed with C2 produced antibodies with maximal enzyme inhibition, followed closely by antibodies from rabbits immunised with bovine α_2 M complexed with C2. Rabbits immunised with C2 mixed with Freund's adjuvant produced antibodies that were only weakly inhibitory, and sometimes resulted in enhancement of enzyme activity. Binding of these "activating" antibodies to the enzyme may have caused conformational changes that favoured the reaction with the substrate. Activation of enzyme activity by Freund's adjuvant generated antibodies has been reported in studies with β -lactamase and trypanopain-Tb [34, 41]. We were unable to explore why two rabbits immunised with the same immunogen (C2 and Freund's adjuvant) produced antibodies that enhanced enzyme activity in the one instance and inhibited activity in the other. It would have been interesting to be able to measure the effects of antibodies collected at other time points in both rabbits. In summary, whilst immunisation using Freund's adjuvant resulted in a higher level of antibody production, immunisation using rabbit or bovine α_2 M resulted in a qualitatively superior antibody production (i.e. antibodies that inhibited C2 activity). In the context of a vaccine to neutralise congopain activity, immunisation with C2 complexed to α_2 M seems a viable option since the antibodies produced were inhibitory towards the protease in vitro.

It is well established that α_2 M-antigen complexes are targeted to antigen presenting cells that express the α_2 M receptor, which in turn results in enhanced presentation of the antigen by MHC class II molecules to CD4⁺ T cells [13, 16, 26]. This antigen delivery has been shown to occur with monocytes and macrophages [1, 12, 26], recognised as amateur antigen presenting cells, and more recently

professional antigen presenting cells such as CD11c⁺ lin⁻ blood dendritic cells and Langerhans cells [16]. In the present study, this mechanism of antigen delivery appeared to result in antibodies that were better able to inhibit the activity of the enzyme than antibodies produced with the use of Freund's adjuvant. This may be due to the preservation of the three-dimensional conformation of the enzyme when it is trapped inside the α_2 M molecule. With Freund's adjuvant, the free enzyme is exposed to denaturation by the very low pH of the adjuvant and receives no such protection as in the α_2 M complexes. In separate (unpublished) experiments in mice, active C2 was significantly more immunogenic than the corresponding inactive enzyme (active site Cys mutated to Ala). This is consistent with current results since inactive C2 does not bind to natural host inhibitors such as α_2 M (unpublished observation). Where the inhibition of congopain by anti-peptide antibodies has been investigated, antibodies were generally found to enhance the activity of the enzyme (unpublished observations). Results for evaluating the effect of anti-peptide antibodies on the activity of trypanopain from *T. b. brucei* have been shown to range from enhanced activity (176%) to inhibition of up to 85% [41].

In a previous study where cattle were immunised with C2 and RWLTM, a proprietary adjuvant from Smith Kline Beecham, the anti-C2 antibodies produced resulted in 50–60% inhibition of C2 activity in vitro [4]. Whilst immunisation had no effect on the establishment of infection or the development of acute anaemia, immunised cattle managed to maintain or even gain weight during infection. Studies are currently underway in a mouse model system to establish whether the humoral immune response induced by α_2 M-congopain complexes confers protection following experimental infection with *T. congolense*.

Another apparent benefit to using α_2 M as an alternative to conventional adjuvants, is its ability to induce antibody responses to lower doses of antigen, as observed for HIV envelope subunit peptides [22]. This is a critical aspect for a vaccine since the amount of antigen required will greatly affect the practicality of the anti-disease vaccine approach.

There are other molecules besides congopain that contribute towards the pathology of trypanosomiasis and which may be worth associating in a multicomponent “vaccine”. Other potential pathogenic factors identified thus far include oligopeptidase B from *T. brucei*, *T. congolense* and *T. evansi* [14, 27, 28], and a surface located acid phosphatase [39]. Although these enzymes do not cleave the bait region of α_2 M, they could be incorporated into α_2 M using congopain or via a non-proteolytic method [15].

The findings of the present study are a step towards improving the efficacy of immunisation with cysteine proteases in a vaccine strategy aimed at mitigating the pathological consequences of trypanosome infections.

Acknowledgements. This work was supported by grants from the Commission of the European Communities’ Sixth Framework Programme TRYPADVAC2 (INCO Contract number 003716) and the South African National Research Foundation.

REFERENCES

- [1] Anderson R.B., Cianciolo G.J., Kennedy M.N., Pizzo S.V., Alpha 2-macroglobulin binds CpG oligodeoxynucleotides and enhances their immunostimulatory properties by a receptor-dependent mechanism, *J. Leukoc. Biol.* (2008) 83:381–392.
- [2] Authié E., Muteti D.K., Mbawa Z.R., Lonsdale-Eccles J.D., Webster P., Wells C.W., Identification of a 33-kilodalton immunodominant antigen of *Trypanosoma congolense* as a cysteine protease, *Mol. Biochem. Parasitol.* (1992) 56:103–116.
- [3] Authié E., Trypanosomiasis and trypanotolerance in cattle: a role for congopain?, *Parasitol. Today* (1994) 10:360–364.
- [4] Authié E., Boulangé A., Muteti D., Lalmanach G., Gauthier F., Musoke A.J., Immunisation of cattle with cysteine proteinases of *Trypanosoma congolense*: targeting the disease rather than the parasite, *Int. J. Parasitol.* (2001) 31:1429–1433.
- [5] Balaban N., Waithaka H.K., Njogu A.R., Goldman R., Intracellular antigens (microtubule-associated protein copurified with glycosomal enzymes) possible vaccines against trypanosomiasis, *J. Infect. Dis.* (1995) 172:845–850.
- [6] Barrett A.J., Starkey P.M., The interaction of α_2 -macroglobulin with proteases. Characteristics and specificity of the reaction, and a hypothesis concerning its molecular mechanism, *Biochem. J.* (1973) 133:709–724.
- [7] Barrett A.J., Brown M.A., Sayers C.A., The electrophoretically “slow” and “fast” forms of the α_2 -macroglobulin molecule, *Biochem. J.* (1979) 181:401–418.
- [8] Barrett A.J., Kembhavi M.M., Brown M.A., Kirschke H., Knight C.G., Tamai M., Hanada K., L-trans-epoxysuccinylleucylamido(4-gaunidino)butane (E-64) and its analogues as inhibitors of cysteine proteinases including cathepsins B, H and L, *Biochem. J.* (1982) 201:189–198.
- [9] Boulangé A., Serveau C., Brillard M., Minet C., Gauthier F., Diallo A., et al., Functional expression of the catalytic domains of two cysteine proteinases from *Trypanosoma congolense*, *Int. J. Parasitol.* (2001) 13:1435–1440.
- [10] Cazzulo J.J., Frasch A.C., SAPA/trans-sialidase and cruzipain: two antigens from *Trypanosoma cruzi* contain immunodominant but enzymatically inactive domains, *FASEB J.* (1992) 14:3259–3264.
- [11] Chagas J.R., Authié E., Serveau C., Lalmanach G., Juliano L., Gauthier F., A comparison of the enzymatic properties of the major cysteine proteases from *Trypanosoma congolense* and *T. cruzi*, *Mol. Biochem. Parasitol.* (1997) 88:85–94.
- [12] Chu C.T., Pizzo S.V., Receptor-mediated antigen delivery into macrophages. Complexing antigen to α_2 -macroglobulin enhances presentation to T cells, *J. Immunol.* (1993) 150:48–58.
- [13] Chu C.T., Oury T.D., Enghild J.J., Pizzo S.V., Adjuvant-free in vivo targeting. Antigen delivery by α_2 -macroglobulin enhances antibody formation, *J. Immunol.* (1994) 152:1538–1545.
- [14] Coetzer T.H., Goldring J.P., Huson L.E., Oligopeptidase B: a processing peptidase involved in pathogenesis, *Biochimie* (2008) 90:336–344.
- [15] Grøn H., Pizzo S.V., Nonproteolytic incorporation of protein ligands into human α_2 -macroglobulin: implications for the binding mechanism of α_2 -macroglobulin, *Biochemistry* (1998) 37:6009–6014.
- [16] Hart J.P., Gunn M.D., Pizzo S.V., A CD91-positive subset of CD11c⁺ blood dendritic cells: characterization of the APC that functions to enhance adaptive immune responses against CD91-targeted antigens, *J. Immunol.* (2004) 172:70–78.
- [17] Hudson L., Hay F.C., Molecular weights and special properties of immunoglobulins and antigens of immunological interest, in: Hudson L., Hay F.C. (Eds.), *Practical immunology*, London, Blackwell Scientific publications, 1980, p. 347.
- [18] Imber M.J., Pizzo S.V., Clearance and binding of two electrophoretic “fast” forms of human α_2 -macroglobulin, *J. Biol. Chem.* (1981) 256:8134–8139.

- [19] Laemmli U.K., Cleavage of structural proteins during the assembly of the head of bacteriophage T4, *Nature* (1970) 277:680–685.
- [20] Lalmanach G., Boulangé A., Serveau C., Lecaille F., Scharfstein J., Gauthier F., Authié E., Congopain from *Trypanosoma congolense*: drug target and vaccine candidate, *Biol. Chem.* (2002) 383:739–749.
- [21] Li S.Q., Fung M.C., Reid S.A., Inoue N., Lun Z.R., Immunization with recombinant beta-tubulin from *Trypanosoma evansi* induced protection against *T. evansi*, *T. equiperdum* and *T. b. brucei* infection in mice, *Parasite Immunol.* (2007) 29:191–199.
- [22] Liao H., Cianciolo G.J., Staats H.F., Searce R.M., Lapple D.M., Stauffer S.H., et al., Increased immunogenicity of HIV envelope subunit complexed with α_2 -macroglobulin when combined with mono-phosphoryl lipid A and GM-CSF, *Vaccine* (2002) 20:2396–2403.
- [23] Lubega G.W., Byarugaba D.K., Prichard R.K., Immunization with a tubulin-rich preparation from *Trypanosoma brucei* confers broad protection against African trypanosomiasis, *Exp. Parasitol.* (2002) 102: 9–22.
- [24] Lubega G.W., Ochola D.O., Prichard R.K., *Trypanosoma brucei*: anti-tubulin antibodies specifically inhibit trypanosome growth in culture, *Exp. Parasitol.* (2002) 102:134–142.
- [25] McDermott J.J., Coleman P.G., Comparing apples and oranges – model based assessment of different tsetse-transmitted trypanosomiasis control strategies, *Int. J. Parasitol.* (2001) 31:603–609.
- [26] Morrot A., Strickland D.K., de Lourdes Higuchi M., Reis M., Pedrosa R., Scharfstein J., Human T cell responses against the major cysteine proteinase (cruzipain) of *Trypanosoma cruzi*: role of the multifunctional α_2 -macroglobulin receptor in antigen presentation by monocytes, *Int. Immunol.* (1997) 9:825–834.
- [27] Morty R.E., Authié E., Troeberg L., Lonsdale-Eccles J.D., Coetzer T.H.T., Purification and characterisation of a trypsin-like serine oligopeptidase from *Trypanosoma congolense*, *Mol. Biochem. Parasitol.* (1999) 102:145–155.
- [28] Morty R.E., Lonsdale-Eccles J.D., Morehead J., Caler E.V., Mentele R., Auerswald E.A., et al., Oligopeptidase B from *Trypanosoma brucei*, a new member of an emerging subgroup of serine oligopeptidases, *J. Biol. Chem.* (1999) 274:26149–26156.
- [29] Murray M., Morrison W.I., Whitelaw D.D., Host susceptibility to African trypanosomiasis: trypanotolerance, *Adv. Parasitol.* (1982) 21:1–68.
- [30a] Nagasawa S., Sugihara H., Han B.H., Suzuki T., Studies on α_2 -macroglobulin in bovine plasma. I. Purification, physical properties, and chemical compositions, *J. Biochem.* (1970) 67:809–819.
- [30b] Polson A., Potgieter G.M., Largier J.F., Mears E.G.F., Joubert F.J., The fractionation of protein mixtures by linear polymers of high molecular weight, *Biochim. Biophys. Acta* (1964) 82:463–475.
- [31] Ramos A.M., Duschak V.G., Gerez de Burgos N.M., Barboza M., Remedi M.S., Vides M.A., Chianbrando G.A., *Trypanosoma cruzi*: cruzipain and membrane-bound cysteine proteinase isoform(s) interacts with human $\alpha(2)$ -macroglobulin and pregnancy zone protein, *Exp. Parasitol.* (2002) 100: 121–130.
- [32] Rasooly R., Balaban N., Trypanosome microtubule-associated protein p15 as a vaccine for the prevention of African sleeping sickness, *Vaccine* (2004) 22:1007–1015.
- [33] Read S.M., Northcote D.H., Minimization of variation in the response to different proteins of the Coomassie blue G dye-binding assay for protein, *Anal. Biochem.* (1981) 116:53–64.
- [34] Richmond M.H., β -Lactamase/anti- β -lactamase interactions, in: Salton M.R.J. (Ed.), *Immunochemistry of enzymes and their antibodies*, New York, Wiley, 1977, pp. 39–55.
- [35] Salvesen G., Enghild J.J., α -Macroglobulins: detection and characterization, *Methods Enzymol.* (1993) 223:121–141.
- [36] Serveau C., Boulangé A., Lecaille F., Gauthier F., Authié E., Lalmanach G., Procongo-pain from *Trypanosoma congolense* is processed at basic pH: an unusual feature among cathepsin L-like cysteine proteinases, *Biol. Chem.* (2003) 384:921–927.
- [37] Taylor K.A., Immune responses of cattle to African trypanosomes: protective or pathogenic?, *Int. J. Parasitol.* (1998) 28:219–240.
- [38] Taylor K.A., Authié E., Pathogenesis of animal trypanosomiasis, in: Maudlin I., Holmes P.H., Miles M.A. (Eds.), *The trypanosomiasis*, Wallingford, CABI Publishing, 2004, pp. 331–353.
- [39] Tosomba O.M., Coetzer T.H.T., Lonsdale-Eccles J.D., Localisation of acid phosphatase activity on the surface of bloodstream forms of *Trypanosoma congolense*, *Exp. Parasitol.* (1996) 84:429–438.
- [40] Troeberg L., Pike R.N., Morty R.E., Berry R.K., Coetzer T.H.T., Lonsdale-Eccles J.D., Proteases from *Trypanosoma brucei brucei*. Purification, characterisation and interactions with host regulatory molecules, *Eur. J. Biochem.* (1996) 238:728–736.
- [41] Troeberg L., Pike R.N., Lonsdale-Eccles J.D., Coetzer T.H.T., Production of anti-peptide antibodies against trypanopain-Tb from *Trypanosoma brucei brucei*: effects of antibodies on enzyme activity against Z-Phe-Arg-AMC, *Immunopharmacology* (1997) 36:295–303.