



**HAL**  
open science

## Identification and characterisation of coding tandem repeat variants in *incA* gene of *Chlamydophila pecorum*

Khalil Mohamad, Abdessalem Rekiki, Garry Myers, Patrik Bavoil, Annie Rodolakis

### ► To cite this version:

Khalil Mohamad, Abdessalem Rekiki, Garry Myers, Patrik Bavoil, Annie Rodolakis. Identification and characterisation of coding tandem repeat variants in *incA* gene of *Chlamydophila pecorum*. *Veterinary Research*, 2008, 39 (6), pp.1. 10.1051/vetres:2008032 . hal-00902944

**HAL Id: hal-00902944**

**<https://hal.science/hal-00902944>**

Submitted on 11 May 2020

**HAL** is a multi-disciplinary open access archive for the deposit and dissemination of scientific research documents, whether they are published or not. The documents may come from teaching and research institutions in France or abroad, or from public or private research centers.

L'archive ouverte pluridisciplinaire **HAL**, est destinée au dépôt et à la diffusion de documents scientifiques de niveau recherche, publiés ou non, émanant des établissements d'enseignement et de recherche français ou étrangers, des laboratoires publics ou privés.

Copyright

## Identification and characterisation of coding tandem repeat variants in *incA* gene of *Chlamydophila pecorum*

Khalil YOUSEF MOHAMAD<sup>1</sup>, Abdessalem REKIKI<sup>1</sup>, Garry MYERS<sup>2</sup>,  
Patrik M. BAVOIL<sup>3</sup>, Annie RODOLAKIS<sup>1\*</sup>

<sup>1</sup> INRA, UR1282, Infectiologie Animale et Santé Publique, Centre de recherche de Tours,  
F-37380 Nouzilly, France

<sup>2</sup> Institute for Genome Science, University of Maryland, Baltimore, MD, USA

<sup>3</sup> Department of Biomedical Sciences, University of Maryland, Baltimore, MD, USA

(Received 5 March 2008; accepted 23 July 2008)

**Abstract** – Bacteria of the family Chlamydiaceae are obligate intracellular pathogens of human and animals. *Chlamydophila pecorum* is associated with different pathological conditions in ruminants, swine and koala. To characterize a coding tandem repeat (CTR) identified at the 3' end of *incA* gene of *C. pecorum*, 51 strains of different chlamydial species were examined. The CTR were observed in 18 of 18 tested *C. pecorum* isolates including symptomatic and asymptomatic animals from diverse geographical origins. The CTR were also found in two strains of *C. abortus* respectively isolated from faeces from a healthy ewe and from a goat belonging to asymptomatic herds, but were absent in *C. abortus* strains isolated from clinical disease specimens, and in tested strains of *C. psittaci*, *C. caviae*, *C. felis* and *C. trachomatis*. The number of CTR repeats is variable and encode several motifs that are rich in alanine and proline. The CTR-derived variable structure of *incA*, which encode the Chlamydiaceae-specific type III secreted inclusion membrane protein, IncA, may be involved in the adaptation of *C. pecorum* to its environment by allowing it to persist in the host cell.

### *Chlamydophila pecorum* / *incA* gene / coding tandem repeats

#### 1. INTRODUCTION

The family Chlamydiaceae is divided into two genera, *Chlamydia* and *Chlamydophila*. The *Chlamydia* genus includes three species: *C. trachomatis*, *C. muridarum* and *C. suis*. The *Chlamydophila* genus comprises six species: *C. psittaci*, *C. abortus*, *C. felis*, *C. caviae*, *C. pneumoniae* and *C. pecorum* [11]. *C. abortus* strains, efficiently colonise the placenta inducing abortion and weak neonates in ruminants [35]. *C. pecorum* strains have been isolated from ruminants, koalas and swine [24, 26]. These bacteria are associated with abortion, conjunctivitis, encephalomyelitis, enteritis, pneumonia and

polyarthritis, but are commonly found in the intestines of animal without any clinical sign [36]. This species presents many genomic variations [9, 39].

Infection of host cells by all chlamydiae is mediated through a non-metabolically active form; the elementary body (EB), whereas intracellular multiplication progresses through the reticulate body (RB), a metabolically active, non-infectious form [28]. RB replication takes place entirely within an intracellular vacuole (the inclusion), whose membrane constitutes a barrier separating chlamydiae from the nutrient-rich cytoplasm. Modification of the inclusion membrane requires chlamydial protein synthesis, suggesting that the chlamydiae synthesize proteins engaged in interactions between the inclusion and cytosolic

\* Corresponding author: rodolaki@tours.inra.fr

components [42]. To date, at least 11 distinct Inc proteins have been identified in the inclusion membrane of *C. trachomatis*-infected cells [4, 5, 43]. The first identified chlamydial Inc protein, termed IncA, involved a comparison of the serological response to *Chlamydia* in animals either infected with live organisms or immunized with killed chlamydial EB. Most Inc proteins have a unique bi-lobed hydrophobic domain of approximately 50–80 amino acids [34]. Microinjection studies [16] have provided direct evidence indicating that *C. trachomatis* IncA participates in the fusion of inclusions. In addition, inclusions containing mutant IncA do not fuse [47]. IncA also forms long fibers extending from the inclusion that are used as cytosolic tracks mediating the formation of secondary inclusions [48].

To date, coding tandem repeats (CTR) have not been described in chlamydial genomes including that of *Chlamydomphila pecorum*, the subject of our study. Variable copy number tandem repeats have been observed in a number of prokaryotic genomes [1, 22]. The tandem repeats, which may be identical or partially degenerate, are usually classified among satellites: minisatellites (repeat units in the range 6–100 bp, spanning hundreds of base-pairs) and microsatellites (repeat units in the range 1–5 bp, spanning a few tens of nucleotides).

More recently, a number of studies have supported the notion that tandem repeats reminiscent of mini and microsatellites are useful as markers for the identification of pathogenic bacteria including those recently emerged from highly monomorphic species [2, 13, 19, 49]. Tandem repeats located within the promoter region of a gene may reveal an on/off switch of gene expression at the transcriptional level [50, 51]. CTR with a repeat unit length a multiple of three are contained within and contribute to a coding sequence, such that variations in the number of copies modify the gene product itself [53]. Tandem repeats within coding regions whose repeat unit length is not a multiple of three can induce a reversible premature end of translation when a mutation changes the number of repeats [17].

In this study, we describe, a coding tandem repeat identified in the *incA* gene via screening a genomic library of *C. pecorum*. The CTR is characterized and its existence in a large number of chlamydial strains belonging to several species is documented.

## 2. MATERIALS AND METHODS

### 2.1. Chlamydia isolates

Fifty one strains representing six species of the family Chlamydiaceae were used in this study: 19 strains of *C. pecorum*, 21 of *C. abortus*, 8 of *C. psittaci*, 1 of *C. caviae*, 1 of *C. felis* and 2 of *C. trachomatis* (Tab. I). All strains were propagated in the yolk sac of chicken embryos and stored at  $-70^{\circ}\text{C}$  as previously described [35]. For library construction, EB of *C. pecorum* M14 were purified according to [8].

### 2.2. Genomic library construction

Genomic DNA was extracted from purified EB as described [7] of *C. pecorum* M14 (isolated from an aborted goat in Morocco), restriction digested with *Sau3A* (Promega, Charbonnières, France) enzyme and fragments (0.1–12 kb) in length were used to generate a lambda ZAP library (ZAP Express Predigested Vector Kit, Stratagene, Massy, France). The library was screened with anti-*C. pecorum* M14-specific serum from infected sheep (experimentation).

### 2.3. PCR

Genomic DNA was extracted from 15–50  $\mu\text{L}$  of yolk sac fluid using the tissue protocol of the DNeasy Tissue Kit (QIAGEN S.A., Courtaboeuf, France). PCR was performed according to the GoTaq Flexi DNA Polymerase (Promega) protocol. The primers used to generate a fragment (454 bp) which contained the tandem repeats were B15-F (5' CAAGAACAGTTGCGTCCTG) and IncA-S-R (5' GTGTGAGATGGCTCTTTATG). PCR (final volume, 25  $\mu\text{L}$ ) consisted of DNA denaturation at  $94^{\circ}\text{C}$  for 5 min followed by 30 cycles of amplification with Thermocycler (Biometra, Goettingen, Germany). Each cycle consisted of a denaturation step at  $94^{\circ}\text{C}$  for 30 s, an annealing step at  $63^{\circ}\text{C}$  for 45 s, an extension step at  $72^{\circ}\text{C}$  for 1.5 min, and a chain elongation at  $72^{\circ}\text{C}$  for 10 min. Finally, 10  $\mu\text{L}$

**Table I.** Strains used in this study.

Strain	Geographic origin	Host	Pathology	Passage history (number)	Reference
<i>C. pecorum</i>					
M14	Morocco	Goat	Abortion	6	[32]
AKT	Tunis	Sheep	Abortion	2	<sup>a</sup>
AB10	France	Sheep	Abortion	5	[30]
VB2	France	Sheep	Orchitis	1	<sup>a</sup>
LW679	USA	Sheep	Arthritis	2*	[30]
SBE	England	Cattle	Encephalomyelitis	3*	<sup>b</sup>
E58	USA	Cattle	Encephalomyelitis	unknown	[27]
824	Scotland	Sheep	Conjunctivitis	2*	[25]
BE53	England	Cattle	Healthy (Feaces)	2*	<sup>b</sup>
iB1, iB2, iB3, iB4 and iB5	France	Sheep	Healthy (Feaces)	5, 3, 4, 3, 4	[40]
R69 and W73	Ireland	Sheep	Healthy (Feaces)	3*, 2*	[40]
iC2, iC3 and iC4	France	Goat	Healthy (Feaces)	3, 3, 5	[40]
<i>C. abortus</i>					
AB7	France	Sheep	Abortion	6*	[12]
H574	Scotland	Sheep	Abortion	4*	[25]
S26/3	Scotland	Sheep	Abortion	4*	[25]
AB1, AB2, AB13 and AB15	France	Sheep	Abortion	6, 4, 5, 2	[36]
AB16	France	Sheep	Abortion	3*	[6]
LLG and POS	Greece	Sheep	Abortion	3*, 3*	[45]
AV1	France	Cattle	Abortion	6	[9]
BA1	England	Cattle	Abortion	1*	[15]
AC1	France	Goat	Abortion	4	[9]
1H and 1B	France	Sheep	AB7 Mutant	2, 3	[38]
109–75	France	Sheep	Pneumonitis	2*	[9]
VB1	France	Sheep	Orchitis	1	[9]
OC1	France	Sheep	Conjunctivitis	6	[9]
1H/77	Scotland	Sheep	Arthritis	2*	[25]
MO907	USA	Sheep	Healthy (Feaces)	4*	[46]
iC1	France	Goat	Healthy (Feaces)	4	[9]
<i>C. psittaci</i>					
VS1	USA	Parrot	Psittacosis	1*	[3]
L2A	France	Bird	Ornithosis	1*	[40]
GR9	USA	Duck	Ornithosis	1*	<sup>c</sup>
NJ1	USA	Turkey	Ornithosis	1*	[3]
VS225	USA	Psittacine	Psittacosis	1*	<sup>c</sup>
9105983	France	Dinghy	Psittacosis	1	[10]
940673	France	Calopsitte	Psittacosis	1	[10]
9106568	France	Dove	Ornithosis	1	[10]
<i>C. caviae</i>					
GPIC	USA	Guinea- Pig	Conjunctivitis	2*	[44]

**Table I.** Continued.

Strain	Geographic origin	Host	Pathology	Passage history (number)	Reference
<i>C. felis</i>					
FePn	USA	Cat	Live vaccine	1*	[40]
<i>C. trachomatis</i>					
Serovar D strain D	Greece	Human	Conjunctivitis	2*	d
Serovar E strain E	Greece	Human	Conjunctivitis	1*	d

<sup>a</sup> Isolated at INRA, UR1282, Infectiologie Animale et Santé Publique, Centre de recherche de Tours, France.

<sup>b</sup> Isolated by M. Dawson, Virology Department, Central Veterinary Laboratory, Weibridge, UK.

<sup>c</sup> Isolated by A. Andersen, National Animal Disease Center, USDA, USA.

<sup>d</sup> From E. Vretou, Institute Pasteur Hellenique, Athens, Greece.

\* Number of passages performed at INRA after receiving the strain.

of the PCR product was analyzed by 1.5% agarose gel electrophoresis and ethidium bromide stain.

#### 2.4. *incA* gene sequencing

The nucleotide sequence of *incA* from *C. pecorum* strains and strains of *C. abortus* that tested positive by PCR, was determined by automated sequencing (Genome Express, Meylan, France). Primers used to amplify the 1.3 kb fragment including *incA*, were IncA-S-F: (3'TATCGTAATACCAAACCACT) and IncA-S-R: (3'GTGTGAGATGGCTCTTTATG) according to the GoTaq Flexi DNA Polymerase (Promega) protocol with annealing temperature of 52 °C and other PCR conditions as reported above. Amplified DNA was purified with the QIAquick PCR Purification Kit (QIAGEN S.A.). The primer pairs used in this study were derived from the genome sequence of *C. pecorum* E58 obtained by Myers and Bavoil (Genbank accession numbers are provided in Tab. II). Multiple alignments were performed using CLUSTAL W (1.83)<sup>1</sup> and the *C. pecorum* E58 sequence as reference.

### 3. RESULTS

#### 3.1. Identification of a CTR in *incA*

The screening of the lambda ZAP library led to the isolation of a clone carrying a

1363 bp DNA fragment encoding an antigen of 35 kDa. Sequence analysis of this clone in pBK-CMV revealed two open reading frames (ORF). Comparison with the genome of *Chlamydophila pecorum* E58 revealed that ORF1 is 97% identical with a segment of *incA* of *Chlamydophila pecorum* E58 and only weak homology (< 25%) with other published chlamydial genomic sequence<sup>2</sup>. Subsequent sequence analysis revealed that ORF1 of *C. pecorum* M14 contained CTR of nine nucleotides repeated 22 times. PCR amplification of the corresponding *incA* segment was then attempted from 51 strains from different species of the Chlamydiaceae (Tab. I) and the amplicons submitted to sequence analysis. Although an *incA* fragment of variable size (Fig. 1), was amplified from all tested *C. pecorum* strains and two *C. abortus* strains, (MO907 and iC1) isolated from the faeces of healthy animals, PCR amplification was negative for *C. abortus* strains isolated from clinical disease specimens, and for tested strains of *C. psittaci*, *C. caviae*, *C. felis* and *C. trachomatis*.

#### 3.2. Characterization of the *incA* CTR

Several types of repeat motifs were observed in the 3' segment of *incA*. All

<sup>1</sup> Available online: <http://www.ebi.ac.uk/clustalw/> [consulted 08/06/2007].

<sup>2</sup> Basic Local Alignment Search Tool [online]: <http://ncbi.nlm.nih.gov/blast/> [consulted 19/07/2007].

**Table II.** Summary table of the CTR motifs in *inca* sequences<sup>a</sup>.

Strain	Gene bp	Protein aa	Motif 1 APA	Motif 2 APAPE	Motif 3 APEVPA	Motif 4 APE	Accession No.
M14	1071	356	22				EU340814
VB2	1008	335	15				EU340824
iB3	999	332	14				EU340827
SBE	981	326	12				EU340823
E58	981	326	12				EU837066
iB5	984	327	12				EU340817
LW679	969	322	11				EU340821
AB10	954	317	9				EU340815
MO907*	954	317	9				EU340812
iC1*	954	317	9				EU340813
AKT	945	314	8				EU340816
BE53	945	314	8				EU340808
iB4	1023	340	10	4			EU340826
iC2	1098	365	6	12			EU340818
iC3	1083	360	6	11			EU340820
iC4	1098	365	6	12			EU340819
R69	1005	334	2	8			EU340822
W73	1005	334	2	8			EU340825
824	1053	350	4		8		EU340809
iB2	1008	335	5		3	4	EU340810
iB1	999	332	5		3	3	EU340811

<sup>a</sup> Gene and predicted protein size, number of the repeats for every motif and Genbank accession numbers are shown for 19 *C. pecorum* strains and 2 *C. abortus* strains (\*).

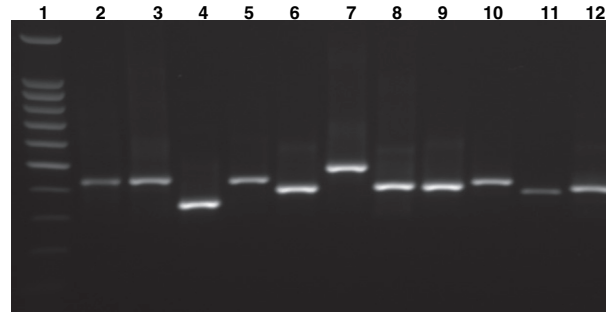
sequenced strains presented a motif of nine nucleotides, GCTCCAGCG, (motif 1) encoding amino acids APA with 3 to 22 repetitions (Tab. II). A second motif of 15 nucleotides, GCTCCAGCTCCAGAG, encoding APAPE (motif 2) was present in six strains with 4–12 repetitions. A third motif of 18 nucleotides, GCTCCAGAGGTTCCAGCG, encoding APEVPA (motif 3) was found in three strains with three to eight repetitions. A fourth motif present in two strains was composed of nine nucleotides, GCTCCAGAG encoding APE (motif 4), which was repeated three or four times. These motifs allowed to classify the strains into three groups.

A first group of 11 strains harbouring motif 1 only, includes 10 *C. pecorum* strains (7 associated with different diseases and 3 isolated from faeces) and 2 *C. abortus* strains (Fig. 2). A second group includes seven *C. pecorum* strains presenting 2 motifs: 5 strains isolated from faeces containing motifs

1 and 2 in tandem (Fig. 3). Two variations on the theme were *C. pecorum* IB4, in which motif 2 is enclosed by two motifs 1 (Fig. 4), and 824 isolated from conjunctivitis which has motifs 1 and 3 (Fig. 5). A third groups included 2 intestinal *C. pecorum* strains iB1 and iB2 presenting three motifs (motif 1, 3 and 4) (Fig. 6).

#### 4. DISCUSSION

The coding tandem repeat found in *inca* of all tested *C. pecorum* strains and two *C. abortus* strains isolated from the faeces of healthy animals was neither present in other *C. abortus* strains isolated from clinical disease specimens, nor from tested *C. psittaci*, *C. caviae*, *C. felis* and *C. trachomatis* strains. Seven out of eight *C. pecorum* strains isolated from animals with clinical symptoms including abortion (three strains) were classified in a single group (group 1). Although this grouping provides hints of a



**Figure 1.** Amplification of *incA* sequence containing the coding tandem repeat (300-500 bp) on DNA extracts of *C. pecorum* strains. Lane 1: 100 bp ladder; Lanes 2-12: *C. pecorum* M14, 824, AB10, LW679, R69, iC2, VB2, W73, iB4, BE53, and iB3.

possible association with disease, additional *C. pecorum* strains from symptomatic or asymptomatic animals would need to be examined to establish an association of the motifs with virulence.

The motifs of IncA are rich in the amino acids alanine and proline and it is striking that many proline-rich sequences are repeated in proteins, e.g. (xP) or (xPy). Some of these sequences have unknown functions, but many of them appear to be involved in processes that increase bacterial virulence. Indeed, proteins with proline-rich CTR are often enhanced in their ability to interact with other proteins or to cross cell membranes.

Mutants of *Listeria monocytogenes* lacking proline-rich repeats domain of the ActA protein, a key factor in bacterium-host cell microfilaments interactions, moved two times slower than the wild type [21]. Attachment of *Mycobacterium avium* to the extracellular matrix protein fibronectin, a key to the virulence of several extracellular pathogenic bacteria binding to mucosal surfaces, is mediated by a fibronectin-attachment protein which contains CTR of AP [41]. However as the Chlamydiaceae are not free in the cytosol and as the IncA protein is not present on the extracellular form of chlamydiae, but only expressed after attachment to the host-cell [33], a similar role in attachment or intracellular mobility is not directly applicable to IncA CTR of *C. pecorum*.

The procyclin protein of *T. brucei* contains a long DP or EP repeat enabling the protein to

extend out from the cell membranes [52]. IncA is likewise translocated across the membrane of the inclusion to facilitate interaction with cytoplasmic components of the host cell [33]. However IncA translocation to the outer face of the inclusion membrane also occurs in *Chlamydia* species with IncA proteins lacking the AP repeats.

In other examples, the variation in copy number within coding tandem repeats has been shown to alter the ability of antibodies to bind to bacterial antigens: addition of tandem repeats in the PAc protein of *Streptococcus mutans*, which normally contains three long repeated regions, induces higher antibody production than the native peptide [18]. The IncA CTR present at the C-terminal end of the protein could therefore affect the conformation of the protein inducing changes in its antigenicity, as previously observed. Size variation in surface proteins Lmp1 and Lmp3 of *Mycoplasma hominis* has also been correlated to tandem repeats at the C-terminal end of the proteins [20].

All examples described above illustrate the importance of the CTR in enhancing specific properties of bacterial virulence factors. It is surprising therefore that CTR are observed in *C. pecorum* which is regarded as the least virulent species of Chlamydiaceae. However we note that 7 out of 8 strains isolated from symptomatic disease samples belong to a single group that has only one motif (APA) with a different number of repeats. In addition, the two encephalomyelitis *C. pecorum*

```

M14 272 QQAAAPAAPAAPAAPAAPAAPAAPAAPAAPAAPAAPAAPAAPAAPAAPAAPAAPAPENN 346
VB2   QQAAAPAAPAAPAAPAAPAAPAAPAAPAAPAAPAAPAAPAAPADPA-----PENN 325
IB3   QQAAAPAAPAAPAAPAAPAAPAAPAAPAAPAAPAAPAAPAPD-----PENN 322
SBE   QQAAAPAAPAAPAAPAAPAAPAAPAAPAAPAAPAP-----PENN 316
E58   QQAAAPAAPAAPAAPAAPAAPAAPAAPAAPAP-----PENN 316
IB5   QQAAAPAAPAAPAAPAAPAAPAAPAAPAAPAP-----PENN 317
LW679 QQAAAPAAPAAPAAPAAPAAPAAPAAPAAPAPD-----PENN 312
IC1   QQAAAPAAPAAPAAPAAPAAPAAPAP-----PENN 307
MO907 QQAAAPAAPAAPAAPAAPAAPAP-----PENN 307
AB10  QQAAAPAAPAAPAAPAAPAP-----PENN 307
AKT   QQAAAPAAPAAPAAPAP-----PENN 304
BE53  VHAAAPAAPAAPAAPAPEN-----NDNN 304
      ..*****

```

**Figure 2.** Alignment of predicted amino acid sequences of the *incA* CTR region in 10 *C. pecorum* strains and 2 *C. abortus* intestinal strains.

```

IC2 272 QQAAAPAAPAAPAAPAAPAPAPAPAPAPAPAPAPAPAPAPAPAPAPAPAPAPAPAPAPAPAPENN 355
IC4   QQAAAPAAPAAPAAPAAPAPAPAPAPAPAPAPAPAPAPAPAPAPAPAPAPAPAPAPAPAPENN 355
IC3   QQAAAPAAPAAPAAPAAPAPAPAPAPAPAPAPAPAPAPAPAPAPAPAPAPAPAPAPAPAPENN 350
W73   QQAAAPAAPAP-----APAPAPAPAPAPAPAPAPAPAPAPAPAPAPAPAPAPAPAPAPENN 324
R69   QQAAAPAAPAP-----APAPAPAPAPAPAPAPAPAPAPAPAPAPAPAPAPAPAPAPAPENN 324
      *****

```

**Figure 3.** Alignment of predicted amino acid sequences of the *incA* CTR region in five *C. pecorum* intestinal strains.

```

IB4 272 QQAAAPAAPAVPAAPAPAPAPAPAPAPAPAPAPAPAPAPAPAPAPAPAPAPAPAPAPAPAPAPAPENN 340

```

**Figure 4.** Alignment of predicted amino acid sequences of the coding tandem repeat of the *incA* gene of *C. pecorum* IB4.

```

824 272 QQAAAPAAPAAPAPAPAPAPAPAPAPAPAPAPAPAPAPAPAPAPAPAPAPAPAPAPAPAPENN 340

```

**Figure 5.** Alignment of predicted amino acid sequences of the *incA* CTR region in *C. pecorum* conjunctivitis strain 824.

```

IB2 272 QQAAAPAAPAVPAAPAPAPAPAPAPAPAPAPAPAPAPAPAPAPAPAPAPAPAPAPAPAPAPAPENN 335
IB1   QQAAAPAAPAVPAAPAPAPAPAPAPAPAPAPAPAPAPAPAPAPAPAPAPAPAPAPAPAPAPAPENN 332
      *****

```

**Figure 6.** Alignment of predicted amino acid sequences of the *incA* CTR region in two *C. pecorum* intestinal strains.



(E58 and SBE) strains had the same number of repeats in spite of their different geographical origins. The same high level of homology was found for the two *C. abortus* strains (isolated from healthy animals) and abortive *C. pecorum* strains AB10 and AKT isolated in France and Tunisia respectively. The high sequence similarity of *incA* between the three intestinal *C. pecorum* isolates iC2, iC3 and iC4 (which were isolated from three animals belonging to the same herd) added to the previously observed similarity by typing with monoclonal antibodies by indirect immunofluorescence (MIF) [40], leading us to postulate that these are three different isolates of the same original strain. Passages in eggs or in the animal host may have played a role in the observed minor differences ( $\pm 1$  repetition of CTR) as for the intestinal ovine *C. pecorum* iB1 and iB2 isolates.

CTR may play a role in the adaptation of chlamydiae to their environment. Variability in the number of repeats in various cell-surface genes of *Candida albicans* clinical isolates may allow rapid adaptation to a fluctuating environment and/or immune evasion [54, 55]. *C. pecorum* is often found in the intestines of healthy animals and it is able to adapt to and persist in the host cell without destroying it, owing to its slow growth rate [23, 29, 37]. Persistence also correlates to the non-fusogenic inclusions phenotype as predicted by bi-mathematic modelling [31] and confirmed by observation: indeed, non fusogenic strains of *C. trachomatis* are more frequently associated with sub-clinical infection than their fusogenic counterparts [14]. To further characterize the impact of the CTR on the structure/function of the inclusion in various strains of *C. pecorum*, future studies of in vivo *IncA* expression may allow to establish the full range of antigenic variability of this protein among different strains.

In conclusion, the function of the *IncA* AP-rich CTR variants of *C. pecorum*, a species which is less virulent than other *Chlamydophila* species such as *C. psittaci* and *C. abortus*, is unknown. However, it is tempting to speculate that it may be involved in the adaptation of the organism to

its environment and/or for immune evasion thereby allowing *C. pecorum* to persist in the host cell for extended periods of time.

**Acknowledgements.** We are grateful to Dr A. Cloeckaert for helpful advice and discussion. P.M. Bavoil and G.S.A. Myers were supported by NIH grant # RO1A151472.

## REFERENCES

- [1] Achaz G., Rocha E.P., Netter P., Coissac E., Origin and fate of repeats in bacteria, *Nucleic Acids Res.* (2002) 30:2987–2994.
- [2] Adair D.M., Worsham P.L., Hill K.K., Klevytska A.M., Jackson P.J., Friedlander A.M., Keim P., Diversity in a variable-number tandem repeat from *Yersinia pestis*, *J. Clin. Microbiol.* (2000) 38:1516–1519.
- [3] Andersen A.A., Van Deusen R.A., Production and partial characterization of monoclonal antibodies to four *Chlamydia psittaci* isolates, *Infect. Immun.* (1988) 56:2075–2079.
- [4] Bannantine J.P., Griffiths R.S., Viratyosin W., Brown W.J., Rockey D.D., A secondary structure motif predictive of protein localization to the chlamydial inclusion membrane, *Cell. Microbiol.* (2000) 2: 35–47.
- [5] Bannantine J.P., Stamm W.E., Suchland R.J., Rockey D.D., *Chlamydia trachomatis* *IncA* is localized to the inclusion membrane and is recognized by antisera from infected humans and primates, *Infect. Immun.* (1998) 66:6017–6021.
- [6] Bouakane A., Rekiki A., Rodolakis A., Protection of pregnant mice against placental and splenic infection by three strains of *Chlamydophila abortus* with a live 1B vaccine, *Vet. Rec.* (2005) 157:771–774.
- [7] Boumedine K.S., Rodolakis A., AFLP allows the identification of genomic markers of ruminant *Chlamydia psittaci* strains useful for typing and epidemiological studies, *Res. Microbiol.* (1998) 149:735–744.
- [8] Caldwell H.D., Kromhout J., Schachter J., Purification and partial characterization of the major outer membrane protein of *Chlamydia trachomatis*, *Infect. Immun.* (1981) 31:1161–1176.
- [9] Denamur E., Sayada C., Souriau A., Orfila J., Rodolakis A., Elion J., Restriction pattern of the major outer-membrane protein gene provides evidence for a homogeneous invasive group among ruminant isolates of *Chlamydia psittaci*, *J. Gen. Microbiol.* (1991) 137:2525–2530.
- [10] Duan Y.J., Souriau A., Mahe A.M., Trap D., Andersen A.A., Rodolakis A., Serotyping of chlamydial clinical isolates from birds with monoclonal antibodies, *Avian Dis.* (1999) 43:22–28.

- [11] Everett K.D., Bush R.M., Andersen A.A., Emended description of the order Chlamydiales, proposal of Parachlamydiaceae fam. nov. and Simkaniaceae fam. nov., each containing one monotypic genus, revised taxonomy of the family Chlamydiaceae, including a new genus and five new species, and standards for the identification of organisms, Int. J. Syst. Bacteriol. (1999) 49:415–440.
- [12] Faye P., Charton L., Mage C., Bernard C., Le Layec C., Propriétés hémagglutinantes du virus de l'avortement enzootique des petits ruminants (souches de Rakeia d'origine ovine et caprine), Bull. Acad. Vet. Fr. (1972) 45:169–173.
- [13] Frothingham R., Meeker-O'Connell W.A., Genetic diversity in the *Mycobacterium tuberculosis* complex based on variable numbers of tandem DNA repeats, Microbiology (1998) 144:1189–1196.
- [14] Geisler W.M., Suchland R.J., Rockey D.D., Stamm W.E., Epidemiology and clinical manifestations of unique *Chlamydia trachomatis* isolates that occupy nonfusogenic inclusions, J. Infect. Dis. (2001) 184:879–884.
- [15] Griffiths P.C., Plater J.M., Martin T.C., Hughes S.L., Hughes K.J., Hewinson R.G., Dawson M., Epi-zootic bovine abortion in a dairy herd: characterization of a *Chlamydia psittaci* isolate and antibody response, Br. Vet. J. (1995) 151:683–693.
- [16] Hackstadt T., Scidmore-Carlson M.A., Shaw E.I., Fischer E.R., The *Chlamydia trachomatis* IncA protein is required for homotypic vesicle fusion, Cell. Microbiol. (1999) 1:119–130.
- [17] Henderson I.R., Owen P., Nataro J.P., Molecular switches—the ON and OFF of bacterial phase variation, Mol. Microbiol. (1999) 33:919–932.
- [18] Kato H., Takeuchi H., Oishi Y., Senpuku H., Shimura N., Hanada N., Nisizawa T., The immunogenicity of various peptide antigens inducing cross-reacting antibodies to a cell surface protein antigen of *Streptococcus mutans*, Oral Microbiol. Immunol. (1999) 14:213–219.
- [19] Keim P., Price L.B., Klevytska A.M., Smith K.L., Schupp J.M., Okinaka R., et al., Multiple-locus variable-number tandem repeat analysis reveals genetic relationships within *Bacillus anthracis*, J. Bacteriol. (2000) 182:2928–2936.
- [20] Ladefoged S.A., Molecular dissection of *Mycoplasma hominis*, APMIS Suppl. (2000) 97:1–45.
- [21] Lasa I., David V., Gouin E., Marchand J.B., Cossart P., The amino-terminal part of ActA is critical for the actin-based motility of *Listeria monocytogenes*; the central proline-rich region acts as a stimulator, Mol. Microbiol. (1995) 18:425–436.
- [22] Le Flèche P., Hauck Y., Onteniente L., Prieur A., Denoëud F., Ramisse V., et al., A tandem repeats database for bacterial genomes: application to the genotyping of *Yersinia pestis* and *Bacillus anthracis*, BMC Microbiol. (2001) 1:2.
- [23] Lee C.K., Moulder J.W., Persistent infection of mouse fibroblasts (McCoy cells) with a trachoma strain of *Chlamydia trachomatis*, Infect. Immun. (1981) 32:822–829.
- [24] Longbottom D., Coulter L.J., Animal chlamydioses and zoonotic implications, J. Comp. Pathol. (2003) 128:217–244.
- [25] McClenaghan M., Herring A.J., Aitken I.D., Comparison of *Chlamydia psittaci* isolates by DNA restriction endonuclease analysis, Infect. Immun. (1984) 45:384–389.
- [26] McColl K.A., Martin R.W., Gleeson L.J., Handasyde K.A., Lee A.K., Chlamydia infection and infertility in the female koala (*Phascolarctos cinereus*), Vet. Rec. (1984) 115:655.
- [27] McNutt S.H., Waller E.F., Sporadic bovine encephalomyelitis (Buss disease), Cornell Vet. (1940) 30:437–448.
- [28] Moulder J.W., Interaction of chlamydiae and host cells in vitro, Microbiol. Rev. (1991) 55:143–190.
- [29] Moulder J.W., Levy N.J., Zeichner S.L., Lee C.K., Attachment defect in mouse fibroblasts (L cells) persistently infected with *Chlamydia psittaci*, Infect. Immun. (1981) 34:285–291.
- [30] Norton W.L., Storz J., Observations on sheep with polyarthritis produced by an agent of the psittacosis-lymphogranuloma venereum-trachoma group, Arthritis Rheum. (1967) 10:1–12.
- [31] Peters J., Wilson D.P., Myers G., Timms P., Bavoil P.M., Type III secretion à la Chlamydia, Trends Microbiol. (2007) 15:241–251.
- [32] Rekiki A., Bouakane A., Hammami S., El Idrissi A.H., Bernard F., Rodolakis A., Efficacy of live *Chlamydophila abortus* vaccine 1B in protecting mice placentas and fetuses against strains of *Chlamydophila pecorum* isolated from cases of abortion, Vet. Microbiol. (2004) 99:295–299.
- [33] Rockey D.D., Heinzen R.A., Hackstadt T., Cloning and characterization of a *Chlamydia psittaci* gene coding for a protein localized in the inclusion membrane of infected cells, Mol. Microbiol. (1995) 15:617–626.
- [34] Rockey D.D., Rosquist J.L., Protein antigens of *Chlamydia psittaci* present in infected cells but not

- detected in the infectious elementary body, *Infect. Immun.* (1994) 62:106–112.
- [35] Rodolakis A., Abortive infection of mice inoculated intraperitoneally with *Chlamydia ovis*, *Ann. Rech. Vet.* (1976) 7:195–205.
- [36] Rodolakis A., Bernard F., Lantier F., Mouse models for evaluation of virulence of *Chlamydia psittaci* isolated from ruminants, *Res. Vet. Sci.* (1989) 46:34–39.
- [37] Rodolakis A., Bernard F., Souriau A., Layachi K., Buzoni-Gatel D., Relationship between virulence of *Chlamydia psittaci* strains and establishment of persistent infection of McCoy cells, *Vet. Microbiol.* (1989) 19:65–73.
- [38] Rodolakis A., Souriau A., Response of ewes to temperature-sensitive mutants of *Chlamydia psittaci* (var *ovis*) obtained by NTG mutagenesis, *Ann. Rech. Vet.* (1983) 14:155–161.
- [39] Rodolakis A., Souriau A., Restriction endonuclease analysis of DNA from ruminant *Chlamydia psittaci* and its relation to mouse virulence, *Vet. Microbiol.* (1992) 31:263–271.
- [40] Salinas J., Souriau A., De Sa C., Andersen A.A., Rodolakis A., Serotype 2-specific antigens from ruminant strains of *Chlamydia pecorum* detected by monoclonal antibodies, *Comp. Immunol. Microbiol. Infect. Dis.* (1996) 19:155–161.
- [41] Schorey J.S., Holsti M.A., Ratliff T.L., Allen P.M., Brown E.J., Characterization of the fibronectin-attachment protein of *Mycobacterium avium* reveals a fibronectin-binding motif conserved among mycobacteria, *Mol. Microbiol.* (1996) 21:321–329.
- [42] Scidmore M.A., Rockey D.D., Fischer E.R., Heinzen R.A., Hackstadt T., Vesicular interactions of the *Chlamydia trachomatis* inclusion are determined by chlamydial early protein synthesis rather than route of entry, *Infect. Immun.* (1996) 64:5366–5372.
- [43] Scidmore-Carlson M.A., Shaw E.I., Dooley C.A., Fischer E.R., Hackstadt T., Identification and characterization of a *Chlamydia trachomatis* early operon encoding four novel inclusion membrane proteins, *Mol. Microbiol.* (1999) 33:753–765.
- [44] Senyk G., Kerlan R., Stites D.P., Schanzlin D.J., Ostler H.B., Hanna L., et al., Cell-mediated and humoral immune responses to chlamydial antigens in guinea pigs infected ocularly with the agent of guinea pig inclusion conjunctivitis, *Infect. Immun.* (1981) 32:304–310.
- [45] Siarkou V., Lambropoulos A.F., Chrisafi S., Kotsis A., Papadopoulos O., Subspecies variation in Greek strains of *Chlamydia abortus*, *Vet. Microbiol.* (2002) 85:145–157.
- [46] Storz J., Superinfection of pregnant ewes latently infected with a psittacosis-lymphogranuloma agent, *Cornell Vet.* (1963) 53:469–480.
- [47] Suchland R.J., Rockey D.D., Bannantine J.P., Stamm W.E., Isolates of *Chlamydia trachomatis* that occupy nonfusogenic inclusions lack IncA, a protein localized to the inclusion membrane, *Infect. Immun.* (2000) 68:360–367.
- [48] Suchland R.J., Rockey D.D., Weeks S.K., Alzhanov D.T., Stamm W.E., Development of secondary inclusions in cells infected by *Chlamydia trachomatis*, *Infect. Immun.* (2005) 73:3954–3962.
- [49] van Belkum A., Scherer S., van Leeuwen W., Willemsse D., van Alphen L., Verbrugh H., Variable number of tandem repeats in clinical strains of *Haemophilus influenzae*, *Infect. Immun.* (1997) 65:5017–5027.
- [50] van Ham S.M., van Alphen L., Mooi F.R., van Putten J.P., Phase variation of *H. influenzae* fimbriae: transcriptional control of two divergent genes through a variable combined promoter region, *Cell* (1993) 73:1187–1196.
- [51] Weiser J.N., Love J.M., Moxon E.R., The molecular mechanism of phase variation of *H. influenzae* lipopolysaccharide, *Cell* (1989) 59:657–665.
- [52] Williamson M.P., The structure and function of proline-rich regions in proteins, *Biochem. J.* (1994) 297:249–260.
- [53] Wilton J.L., Scarman A.L., Walker M.J., Djordjevic S.P., Reiterated repeat region variability in the ciliary adhesin gene of *Mycoplasma hyopneumoniae*, *Microbiology* (1998) 144:1931–1943.
- [54] Zhang N., Harrex A.L., Holland B.R., Fenton L.E., Cannon R.D., Schmid J., Sixty alleles of the ALS7 open reading frame in *Candida albicans*: ALS7 is a hypermutable contingency locus, *Genome Res.* (2003) 13:2005–2017.
- [55] Zhao X., Pujol C., Soll D.R., Hoyer L.L., Allelic variation in the contiguous loci encoding *Candida albicans* ALS5, ALS1 and ALS9, *Microbiology* (2003) 149:2947–2960.