



**HAL**  
open science

## **GH and IGF-I binding sites in adipose tissue, liver, skeletal muscle and ovaries of feed-restricted gilts**

Isabelle Louveau, H el ene Quesnel, Armelle Prunier

### ► **To cite this version:**

Isabelle Louveau, H el ene Quesnel, Armelle Prunier. GH and IGF-I binding sites in adipose tissue, liver, skeletal muscle and ovaries of feed-restricted gilts. *Reproduction Nutrition Development*, 2000, 40 (6), pp.571-578. 10.1051/rnd:2000138 . hal-00900410

**HAL Id: hal-00900410**

**<https://hal.science/hal-00900410>**

Submitted on 11 May 2020

**HAL** is a multi-disciplinary open access archive for the deposit and dissemination of scientific research documents, whether they are published or not. The documents may come from teaching and research institutions in France or abroad, or from public or private research centers.

L'archive ouverte pluridisciplinaire **HAL**, est destin ee au d ep ot et  a la diffusion de documents scientifiques de niveau recherche, publi es ou non,  emanant des  tablissements d'enseignement et de recherche fran ais ou  trangers, des laboratoires publics ou priv es.

Original article

## **GH and IGF-I binding sites in adipose tissue, liver, skeletal muscle and ovaries of feed-restricted gilts**

Isabelle LOUVEAU\*, Hélène QUESNEL, Armelle PRUNIER

Unité Mixte de Recherches sur le Veau et le Porc,  
Institut National de la Recherche Agronomique, 35590 Saint-Gilles, France

(Received 4 April 2000; accepted 23 November 2000)

**Abstract** — The influence of feed restriction on GH and IGF-I binding was examined in the cyclic gilt. IGF-I, IGFBPs, insulin and leptin levels in plasma were also measured. Twenty-four gilts whose oestrous cycle was synchronised were used. From day 3 to day 12, (with day 0 being the first day of oestrus) feed allowance was 240% and 80% of the energy requirements for maintenance for well-fed (H) and restricted gilts (L) respectively. Six gilts in each group were treated with an antagonist of GnRH but the treatment had no effect on any reported measurements. Blood and tissue samples were collected on days 12 and 13 respectively. L gilts lost live weight whereas H gilts gained weight. Plasma IGF-I, insulin and leptin concentrations were lower in L than in H gilts whereas plasma IGFBP levels were not affected by feed restriction. The specific binding of  $^{125}\text{I}$ -bGH to adipose tissue, liver, skeletal muscle and ovary membranes did not differ significantly between H and L gilts. Specific binding of  $^{125}\text{I}$ -IGF-I to hepatic membranes was higher in L than in H gilts whereas it did not differ between the two groups in the other tissue membranes.

**gilt / food restriction / GH / IGF-I / binding**

**Résumé** — **Liaison de la GH et de l'IGF-I dans le tissu adipeux, le foie, le muscle squelettique et l'ovaire de la truie cyclique rationnée.** L'objectif de cette étude est de déterminer l'influence du statut nutritionnel sur les sites de liaison de la GH et de l'IGF-I chez la truie cyclique. Les niveaux plasmatiques d'IGF-I, d'IGFBPs, d'insuline et de leptine sont aussi mesurés. Du 3<sup>e</sup> au 12<sup>e</sup> jour du cycle œstral (J0 = début de l'œstrus), 24 truies reçoivent deux niveaux alimentaires correspondant à 240 (H) ou 80 % (L) de leurs besoins énergétiques d'entretien. Six truies de chaque groupe sont traitées avec un antagoniste de GnRH mais ce traitement n'a aucun effet sur les mesures réalisées. Des prélèvements de sang sont réalisés à J12 et les tissus sont prélevés à J13. Les truies L ont perdu du poids alors que les truies H ont pris du poids. Les concentrations plasmatiques d'IGF-I, d'insuline et de leptine sont plus faibles chez les truies L que chez les truies H. Par contre, le rationnement alimentaire ne modifie pas les niveaux plasmatiques d'IGFBPs. Dans le foie, le muscle squelettique, l'ovaire et le tissu adipeux, la liaison spécifique de  $^{125}\text{I}$ -bGH ne diffère pas significativement entre les deux lots. La liaison spécifique de  $^{125}\text{I}$ -IGF-I est plus élevée dans le foie des truies L que dans celui des truies H mais ne diffère pas entre les deux lots dans les autres tissus.

**truie / rationnement alimentaire / GH / IGF-I / liaison**

\* Correspondence and reprints  
E-mail: louveau@st-gilles.rennes.inra.fr

## 1. INTRODUCTION

The GH/IGF-I axis is known to play an important role in mediating the interactions between nutrition, growth and reproduction [23, 33]. Numerous studies have clearly demonstrated that plasma IGF-I concentrations decrease in response to fasting or undernutrition and that circulating IGF-BPs are altered by nutritional status [36]. Furthermore, it was shown that the response of the IGF system to malnutrition varies with the stage of development [10, 22]. Although receptors may represent important levels of regulation of GH and IGF-I actions, very little is known about the effects of altered nutrition on GH and IGF-I receptors in various tissues especially in pubertal animals. Therefore, this experiment was designed to examine the influence of nutritional deficiency on GH and IGF-I receptors in adipose tissue, liver, skeletal muscle and ovaries of cyclic gilts. Changes in IGF-I, IGF-BPs, insulin and leptin levels in plasma were also evaluated. In an attempt to get a better understanding of the relationship between somatotrophic, gonadotrophic axes, nutrition and the ovarian function, the effects of feed restriction were also evaluated in gilts treated with an antagonist of GnRH [28].

## 2. MATERIALS AND METHODS

### 2.1. Animals and experimental design

Twenty-four crossbred Landrace  $\times$  Large White gilts, which averaged  $219 \pm 8$  days of age (mean  $\pm$  SD) had their oestrous cycles synchronised by daily feeding of  $20 \text{ mg}\cdot\text{d}^{-1}$  altrenogest (Regumate<sup>®</sup>, Roussel-Uclaf, Romainville, France) for 18 days. The first day of oestrus behaviour was designed as day 0. During the whole experiment, the gilts received a diet containing 3.04 Mcal metabolisable energy per kg, 18.1% crude protein and 0.96% lysine twice daily, at 08.30 and 13.40 h. From the beginning of the altrenogest treatment until day 2, feed

allowance for all gilts was calculated to meet 240% of the energy requirements for maintenance. Maintenance requirements were calculated for individual gilts on the basis of their metabolic body weight ( $0.24 \text{ Mcal metabolisable energy per kg of body weight}^{0.60}$ ) [21]. At day 2, the gilts averaged  $158 \pm 14 \text{ kg body weight (mean } \pm \text{ SD)}$ . From day 3 to day 12, feed allowance was 240% of the energy requirements for maintenance for well-fed (H,  $n = 12$ ) and 80% for restricted gilts (L,  $n = 12$ ). In the L group, there were no feed refusals. In the H group, feed refusals were rarely observed and were not measured. All gilts were slaughtered on day 13 after a 16–17 h fast. The animals were reared in compliance with national regulations for the human care and the use of animals in research.

This experiment included a study on the influence of feed restriction on ovarian development and a comparison with the influence of gonadotrophin deprivation. In this context, six gilts in each feeding group were treated with an antagonist of GnRH, Antarelix, from day 3 to day 12. A full description was reported previously [28].

### 2.2. Sample collection

A catheter was inserted into the jugular vein of the gilts under general anaesthesia during the last week of altrenogest administration. The animals were deprived of feed on the day of surgery and then refed. Catheters were rinsed daily with physiological serum containing sodium heparin ( $190 \text{ IU}\cdot\text{mL}^{-1}$ ) and antibiotics. Blood samples were collected every 15 min from 10.00 to 16.00 h on day 12. Samples were collected in heparinized tubes, kept on ice and immediately centrifuged for removal of plasma. Plasma samples were stored at  $-20 \text{ }^\circ\text{C}$  until analysis. At slaughter, the ovaries, liver, skeletal muscle (*longissimus*) and subcutaneous adipose tissue samples were collected within 15 min after death and were stored at  $-20 \text{ }^\circ\text{C}$ .

### 2.3. Insulin, IGF-I and leptin assays

Plasma concentrations of insulin were measured every 15 min using a previously described RIA [24]. Concentrations of IGF-I were determined in plasma samples taken at 16.00 h using a double antibody RIA after an acid-ethanol extraction [14]. Concentrations of leptin were measured in plasma taken at 13.15 h using the multi-species double-antibody kit assay (Linco Research, St. Charles, MO, USA) previously validated in the pig [25]. All samples were analysed in duplicate within a single assay. The intra-assay CV was 6.3% at 167  $\mu\text{IU}\cdot\text{mL}^{-1}$  for insulin, 8.8% at 41  $\text{ng}\cdot\text{mL}^{-1}$  for IGF-I and 6.9% at 2.94  $\text{ng}\cdot\text{mL}^{-1}$  HE (human equivalent) for leptin. Average sensitivities, estimated as 90% of total binding, were 2  $\mu\text{IU}\cdot\text{mL}^{-1}$  for insulin, 0.08  $\text{ng}\cdot\text{mL}^{-1}$  for IGF-I and 1  $\text{ng}\cdot\text{mL}^{-1}$  HE for leptin.

### 2.4. SDS-PAGE and Western ligand blot analysis of plasma IGFBPs

Plasma samples (2  $\mu\text{L}$ ) collected at 16.00 h were subjected to SDS/polyacrylamide gel electrophoresis under non-reducing conditions, using a 4% stacking gel and a 12.5% resolving gel [13]. The proteins were then transferred to a nitrocellulose membrane (BA85, 0.45  $\mu\text{m}$ ; Schleicher and Schuell, Dassel, Germany) using a Bio-Rad electrophoresis transfer unit. The nitrocellulose membrane sheets were treated following a previously described procedure [11]. Briefly, the blots were washed and then incubated with 90 000  $\text{cpm}\cdot\text{mL}^{-1}$  of  $^{125}\text{I}$ -IGF-I for 2 h at 20 °C. After extensive washings [11], the blots were dried and then exposed to a Kodak X-Omat AR film with two intensifying screens for 7 days at -70 °C. The relative levels of IGFBPs were quantified using a phosphorImager (STORM, Molecular Dynamics, Bondoufle, France) and the IMAGEQUANT software. To prevent gel to gel variation in IGFBP evaluation, the two treatments were represented on each gel.

### 2.5. Membrane preparation and binding studies

Microsomal membranes were prepared as previously described [20] with modification for adipose tissue [34]. In brief, frozen tissues were individually cut into small pieces and homogenised in ice-cold 50 mM Tris-HCl buffer (pH 7.4) containing 250 mM sucrose, 1 mM EDTA, 0.02%  $\text{NaN}_3$  and 1 mM phenylmethylsulfonyl fluoride using a Polytron tissue grinder. After the final centrifugation (100 000  $\times g$ , 60 min), the pellet, which contained the microsomal membranes, was resuspended in 50 mM Tris-HCl (pH 7.4) and stored at -20 °C until use. The protein content was estimated using the bicinchoninic acid assay (Pierce, Rockford, IL, USA) with BSA as a standard.

All GH [32] and IGF-I [15] binding assays were carried out in triplicate as previously described. Microsomal membrane proteins (400  $\mu\text{g}$  for adipose tissue, 500  $\mu\text{g}$  for liver and muscle and 800  $\mu\text{g}$  per tube for ovaries) were incubated with the  $^{125}\text{I}$ -ligand (30 000 cpm or 0.3 ng per tube for GH and 60 000 cpm or 0.2 ng per tube for IGF-I) in binding buffer (25 mM Tris-HCl (pH 7.4), 10 mM  $\text{CaCl}_2$ , 0.5% BSA, 0.02%  $\text{NaN}_3$  for GH; 50 mM Tris-HCl (pH 7.4), 5 mM  $\text{MgCl}_2$ , 0.5% BSA, 0.02%  $\text{NaN}_3$  for IGF-I) in the absence or presence of an excess of unlabelled bGH or IGF-I. After incubation for 48 h at room temperature (GH) or for 24 h at 4 °C (IGF-I), 2 mL ice-cold binding buffer was added to stop the reaction. Bound and free hormones were separated by centrifugation.

### 2.6. Statistical analyses

All data were analysed by analysis of variance using the GLM procedure of SAS [31]. All models included feeding level, Antarelix treatment and the interaction between these two factors. For insulin concentrations, split-plot models were used that



**Figure 1.** Profile of plasma insulin concentrations in well-fed (H, ○) and feed-restricted (L, ●) gilts. Meals were distributed at 08.30 and 13.40 h. Values are means  $\pm$  SEM,  $n = 12$  per group. \* $P < 0.05$ .

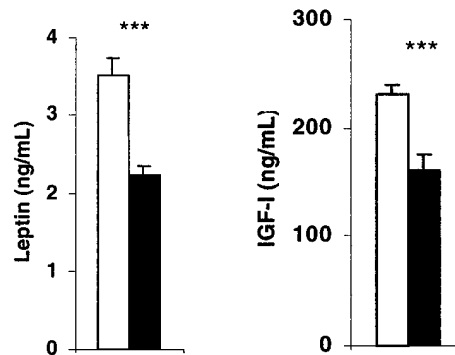
also included gilt nested within feeding level  $\times$  Antarelix treatment, sampling time, time  $\times$  feeding level and time  $\times$  Antarelix treatment. The effects of feeding level, Antarelix treatment and feeding level  $\times$  Antarelix treatment were tested using gilt within feeding level  $\times$  Antarelix treatment as the error term. The effect of time, time  $\times$  feeding level and time  $\times$  Antarelix treatment were tested using the residual error term. When the time  $\times$  feeding level interaction was significant, comparisons between groups were performed for each sampling time.

### 3. RESULTS

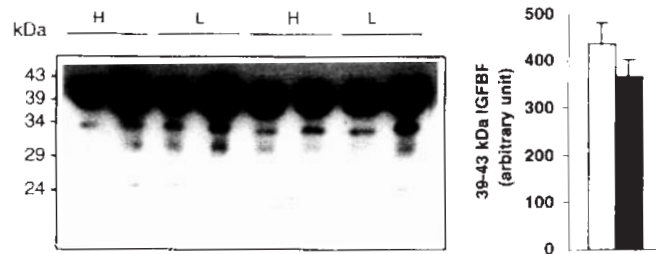
The treatment by the GnRH antagonist Antarelix had no influence on any of measured parameters ( $P > 0.1$ ). Moreover, there was no interaction between this treatment and the level of feeding. Therefore, data presented here took into account all gilts (H,  $n = 12$  and L,  $n = 12$ ), without distinction between Antarelix-treated and non-treated gilts.

During the experimental period, L gilts lost live weight whereas H gilts gained weight ( $-2.4 \pm 0.9$  versus  $+12.9 \pm 0.8$  kg, mean  $\pm$  SD,  $P < 0.001$ ). Plasma concentrations of insulin were lower in L than in H gilts before the 13.40 h meal (Fig. 1,  $P < 0.05$ ). After the meal, concentrations differed between the two groups at 15.00,

15.45 and 16.00 h ( $P < 0.05$ ). Plasma concentrations of leptin, measured just before the 13.40 h meal, were lower in L than in H gilts (Fig. 2,  $P < 0.001$ ). Plasma IGF-I concentrations, measured at 16.00 h, were lower (Fig. 2,  $P < 0.001$ ) in L than in H gilts. Ligand blot analysis revealed the presence of five IGFBP bands with apparent molecular masses of 43, 39, 34, 29 and 24 kDa (Fig. 3). The 43–39 kDa IGFBP was predominant. The relative quantification showed no significant variations in plasma 43–39 IGFBP (Fig. 3,  $P > 0.1$ ) and in other IGFBP levels between females (data not shown).



**Figure 2.** Plasma leptin and IGF-I concentrations in well-fed (H, □) and feed-restricted (L, ■) gilts. Plasma concentrations were measured just before the 13.40 h meal for leptin and at 16.00 h for IGF-I. Values are means  $\pm$  SEM,  $n = 12$  per group. \*\*\* $P < 0.001$ .



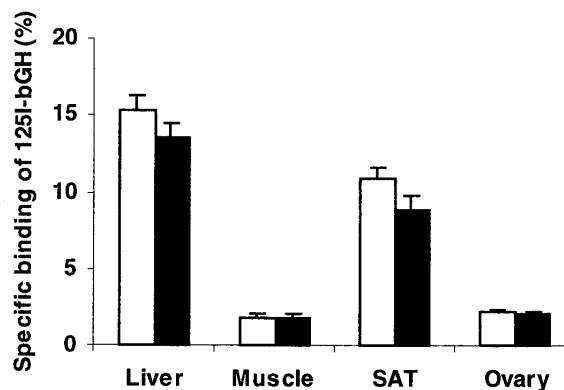
**Figure 3.** Plasma IGF-BPs in well-fed (H, □) and feed-restricted (L, ■) gilts. IGF-BP levels were evaluated using ligand blot analysis as described in Materials and Methods. Samples of plasma were collected at 16.00 h. The left-hand panel shows a representative autoradiogram (7-day exposure) from ligand blot analysis of IGF-BPs in plasma samples (2 µL) of representative gilts per experimental group. The right-hand panel shows relative levels of plasma 39–43 kDa IGF-BP in well-fed (H, □) and feed-restricted (L, ■) gilts. Values are means  $\pm$  SEM,  $n = 12$  per group.

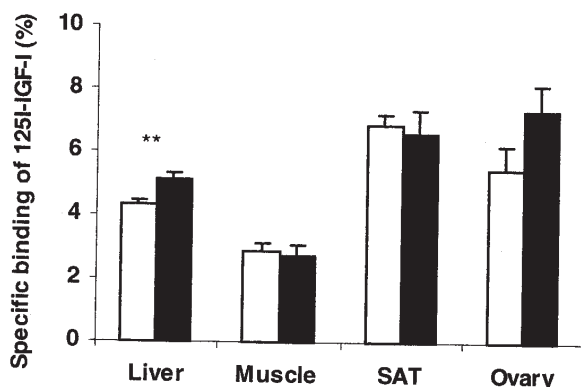
The effect of feed restriction on  $^{125}\text{I}$ -bGH specific binding to the liver, skeletal muscle, subcutaneous adipose tissue and ovary membranes was not significant (Fig. 4,  $P > 0.05$ ). In adipose tissue, however, binding tended to be lower ( $P = 0.086$ ) in L than in H gilts. Specific binding of  $^{125}\text{I}$ -IGF-I to hepatic membranes was higher ( $P < 0.01$ ) in L than in H gilts (Fig. 5). In the ovaries, it tended to be higher ( $P = 0.098$ ) in L than in H gilts. No significant differences ( $P > 0.1$ ) between the two groups were observed for skeletal muscle and subcutaneous adipose tissue.

#### 4. DISCUSSION

The results of the present experiment indicate that GH (GHR) and IGF-I (IGF-IR) receptors in adipose tissue, liver, skeletal muscle and ovaries are poorly affected by a reduction of feed intake despite significant changes in body weight gain and hormonal status. The decline in plasma insulin concentrations which is consistent with previous studies in prepubertal gilts [3, 6] and in lactating sows [12, 27, 38], probably allows the restricted gilts to maintain their glycemia. The decrease in plasma leptin concentrations in response to feed restriction

**Figure 4.** Specific binding of  $^{125}\text{I}$ -bGH to the liver, muscle, subcutaneous adipose tissue (SAT) and ovaries in well-fed (H, □) and feed-restricted (L, ■) gilts. Microsomal membranes were incubated with  $^{125}\text{I}$ -bGH in the absence or the presence of an excess of unlabelled bGH for 48 h at room temperature as described in Materials and Methods. Measurements were made after a 16–17 h fast. Values are means  $\pm$  SEM,  $n = 12$  per group.





**Figure 5.** Specific binding of  $^{125}\text{I}$ -IGF-I to the liver, muscle, subcutaneous adipose tissue (SAT) and ovaries in well-fed (H, □) and feed-restricted (L, ■) gilts. Microsomal membranes were incubated with  $^{125}\text{I}$ -IGF-I in the absence or the presence of an excess of unlabelled IGF-I for 24 h at 4 °C as described in Materials and Methods. Measurements were made after a 16–17 h fast. Values are means  $\pm$  SEM,  $n = 12$  per group. \*\* $P < 0.01$ .

has also been described by Mao et al. [18]. The finding of a lower plasma IGF-I concentration in feed-restricted gilts is consistent with the response to feed deprivation or restriction previously reported in young growing pigs [5, 8, 9], prepubertal and mature gilts [1, 6] and lactating sows [18, 27]. Because the liver is considered as one of the major sites of IGF-I production, it has often been indicated that the low concentration of IGF-I results from a decrease in GH binding. In the current study, the decrease did not arise from a reduction of this receptor. Nevertheless, a decrease in total hepatic GHR cannot be ruled out. Indeed, the total number of GHR was likely to be lower in restricted gilts since their liver was 30% lighter than in well-fed gilts (data not shown).

Reduction of circulating IGF-I during malnutrition has been shown to be associated with changes in the plasma IGFBP profile in growing pigs [8, 19]. However, the present study failed to show a significant difference in IGFBP levels between restricted and well-fed gilts. This finding was in agreement with the lack of effect of a 48 h food deprivation in prepubertal and mature gilts [1]. This suggests that the sensitivity of plasma IGF-BPs to feed restriction differs between pubertal and younger animals.

There is little information regarding the influence of feed restriction on IGF-IR. The

finding of slightly higher levels of IGF-I binding in the liver of feed-restricted gilts is consistent with the increase in IGF-IR in some tissues in response to fasting or protein deprivation [16, 35] and with data showing that IGF-I down-regulates its own receptor in vitro [29, 30]. The lack of alteration of IGF-I binding in skeletal muscle and adipose tissue despite changes in plasma IGF-I concentration does not corroborate this relationship. The influence of local factors like locally produced IGF-I cannot be excluded. Altogether, our findings showed the existence of a tissue-specific regulation that may represent a way to regulate the effect of feed restriction according to organs and/or tissues.

The observation that feed restriction did not alter GH binding in the liver is not consistent with previously reported data. A reduction of GH binding in liver has been observed in rats [17, 37], cattle [4] and sheep [2]. It has also been reported that feed restriction decreases GHR mRNA levels in the liver of young pigs [9], whereas it increases these levels in peripubertal gilts [7]. There is little data regarding the influence of feed restriction on GHR levels in tissues other than the liver. The present study failed to show a significant effect on GHR in skeletal muscle as reported in peripubertal gilts [7] whereas an increase in the GHR mRNA content has been observed in young pigs [9]. It is likely that the differences

observed in the response of GHR to malnutrition are related to the developmental stages. In rats, it has been reported that the regulation of hepatic GHR and/or plasma IGF-I by nutritional status is age-dependent and that the young have a greater sensitivity to undernutrition [10, 22].

Feed-restriction, which significantly decreased ovarian weight but did not alter the number of medium and large follicles ( $\geq 2\text{mm}$ , [28]), had no significant influence on GH and IGF-I binding to ovarian membranes. However, cell-specific alterations cannot be excluded since GH and IGF-I binding sites are widely distributed within porcine ovaries [26].

In conclusion, the present study indicates that feed restriction has a small effect on GH and IGF-I receptors despite changes in plasma concentrations of insulin, leptin and IGF-I in cyclic gilts. Our findings associated with previous observations are consistent with the suggestion that the response of the GH/IGF-I axis to undernutrition varies with developmental age.

#### ACKNOWLEDGEMENTS

The authors wish to acknowledge Y. Lebreton for surgical procedures, M. Besnard, B. Carissant, F. Giovanni, J.C. Hulin and V. Ferré for expert technical assistance. Antarelix was generously supplied by Dr. Deghenghi (Europeptides, Argenteuil, France) and Dr. Perissoud (ATSA Medica, Germany). Antiserum against IGF-I was kindly provided by Dr. Weiler (University of Hohenheim, Germany). Bovine GH was a gift from USDA Animal Hormone Program (Beltsville, MD, USA).

#### REFERENCES

- [1] Barb C.R., Kraeling R.R., Rampacek G.B., Dove C.R., Metabolic changes during the transition from the fed to the acute feed-deprived state in prepuberal and mature gilts, *J. Anim. Sci.* 75 (1997) 781–789.
- [2] Bass J.J., Oldham J.M., Hodgkinson S.C., Fowke P.J., Sauerwein H., Molan P., Breier B.H., Gluckman P.D., Influence of nutrition and bovine growth hormone (GH) on hepatic GH binding, insulin-like growth factor-I and growth of lambs, *J. Endocrinol.* 128 (1991) 181–186.
- [3] Booth P.J., Craigon J., Foxcroft G.R., Nutritional manipulation of growth and metabolic and reproductive status in prepubertal gilts, *J. Anim. Sci.* 72 (1994) 2415–2424.
- [4] Breier B.H., Gluckman P.D., Bass J.J., The somatotrophic axis in young steers: influence of nutritional status and oestradiol-17 $\beta$  on hepatic high and low-affinity somatotrophic binding sites, *J. Endocrinol.* 116 (1988) 169–177.
- [5] Champion D.R., McCusker R.H., Buonomo F.C., Jones W.K. Jr., Effect of fasting neonatal piglets on blood hormone and metabolite profiles and on skeletal muscle metabolism, *J. Anim. Sci.* 63 (1986) 1418–1427.
- [6] Charlton S.T., Cosgrove J.R., Glimm D.R., Foxcroft G.R., Ovarian and hepatic insulin-like growth factor-I gene expression and associated metabolic responses in prepubertal gilts subjected to feed restriction and refeeding, *J. Endocrinol.* 139 (1993) 143–152.
- [7] Combes S., Louveau I., Bonneau M., Moderate food restriction affects skeletal muscle and liver growth hormone receptors differently in pigs, *J. Nutr.* 127 (1997) 1944–1949.
- [8] Dauncey M.J., Rudd B.T., White D.A., Shakespear R.A., Regulation of insulin-like growth factor binding proteins in young growing animals by alteration of energy status, *Growth Reg.* 3 (1993) 198–207.
- [9] Dauncey M.J., Burton K.A., White P., Harrison A.P., Gilmour R.S., Duchamp C., Cattaneo D., Nutritional regulation of growth hormone receptor gene expression, *FASEB J.* 8 (1994) 81–88.
- [10] Fliesen T., Maiter D., Gerard G., Underwood L.E., Maes M., Ketelsleger J.M., Reduction of serum insulin-like growth factor-I by dietary restriction is age dependent, *Pediatr. Res.* 26 (1989) 415–419.
- [11] Hossenlopp P., Seurin D., Segovia-Quinson B., Binoux M., Identification of an insulin-like growth factor binding protein in human cerebrospinal fluid with a selective affinity for IGF-II, *FEBS Lett.* 208 (1986) 439–444.
- [12] Koketsu Y., Dial G.D., Pettigrew J.E., Marsh W.E., King V.L., Influence of imposed feed intake patterns during lactation on reproductive performance and on circulating levels of glucose, insulin, and luteinizing hormone in primiparous sows, *J. Anim. Sci.* 74 (1996) 1036–1046.
- [13] Laemmli U.K., Cleavage of structural proteins during the assembly of the head of bacteriophage T4, *Nature* 227 (1970) 680–685.
- [14] Louveau I., Bonneau M., Effect of a growth hormone infusion on plasma insulin-like growth factor-I in Meishan and Large White pigs, *Reprod. Nutr. Dev.* 36 (1996) 301–310.



- [15] Louveau I., Combes S., Cochard A., Bonneau M., Developmental changes in insulin-like growth factor-I (IGF-I) receptor levels and plasma IGF-I concentrations in Large-White and Meishan pigs, *Gen. Comp. Endocrinol.* 104 (1996) 29–36.
- [16] Lowe W.L. Jr., Adamo M., Werner H., Roberts C.T., LeRoith D., Regulation by fasting of rat insulin-like growth factor I and its receptor. Effects on gene expression and binding, *J. Clin. Invest.* 84 (1989) 619–626.
- [17] Maes M., Underwood L.E., Ketelslegers J.M., Plasma somatomedin-C in fasted and refed rats: close relationship with changes in liver somatogenic but not lactogenic sites, *J. Endocrinol.* 97 (1983) 243–252.
- [18] Mao J., Zak L.J., Cosgrove J.R., Shostak S., Foxcroft G.R., Reproductive, metabolic, and endocrine responses to feed restriction and GnRH treatment in primiparous lactating sows, *J. Anim. Sci.* 77 (1999) 725–735.
- [19] McCusker R.H., Campion D.R., Jones W.K., Clemmons D.R., The insulin-like growth factor-binding proteins of porcine serum: endocrine and nutritional regulation, *Endocrinology* 125 (1985) 501–509.
- [20] Meserole V.K., Etherton T.D., Insulin binding to liver microsomes from lean and obese swine during growth to market weight, *J. Anim. Sci.* 59 (1984) 650–657.
- [21] Noblet J., Karege C., Dubois S., van Milgen J., Metabolic utilization of energy and maintenance requirements in growing pigs: effect of sex and genotype, *J. Anim. Sci.* 77 (1999) 1208–1216.
- [22] Oster M.H., Levin N., Fielder P.J., Robinson I.C.A., Baxter R.C., Cronin M.J., Developmental differences in the IGF-I system response to severe and chronic calorie malnutrition, *Am. J. Physiol.* 270 (1996) E646–E653.
- [23] Prunier A., Quesnel H., Nutritional influences on the hormonal control of reproduction in female pigs, *Livest. Prod. Sci.* 63 (2000) 1–16.
- [24] Prunier A., Martin C., Mounier A.M., Bonneau M., Metabolic and endocrine changes associated with undernutrition in the peripubertal gilt, *J. Anim. Sci.* 71 (1993) 1887–1894.
- [25] Qian H., Barb C.R., Compton M.M., Hausman G.J., Azain M.J., Kraeling R.R., Baile C.A., Leptin mRNA expression and serum leptin concentrations as influenced by age, weight, and estradiol in pigs, *Domest. Anim. Endocrinol.* 16 (1999) 135–143.
- [26] Quesnel H., Localization of binding sites for IGF-I, insulin and GH in the sow ovary, *J. Endocrinol.* 163 (1999) 363–372.
- [27] Quesnel H., Pasquier A., Mounier A.M., Louveau I., Prunier A., Influence of feed restriction in primiparous lactating sows on body condition and metabolic parameters, *Reprod. Nutr. Dev.* 38 (1998) 261–274.
- [28] Quesnel H., Pasquier A., Mounier A.M., Prunier A., Feed restriction in cyclic gilts: gonadotropin-independent effects on follicular growth, *Reprod. Nutr. Dev.* 40 (2000) 405–414.
- [29] Rosenfeld R.G., Dollar L.A., Characterization of the somatomedin-C/insulin-like growth factor (Sm-C/IGF-I) receptor on cultured human fibroblast monolayers: regulation of receptor concentration by Sm-C/IGF-I and insulin, *J. Clin. Endocrinol. Metab.* 55 (1982) 434–440.
- [30] Rosenthal S.M., Brunetti A., Brown E.J., Mamula P.W., Goldfine I.D., Regulation of IGF-I receptor expression during muscle cell differentiation. Potential autocrine role of IGF-II, *J. Clin. Invest.* 87 (1991) 1212–1219.
- [31] SAS, SAS User's Guide: Statistics (Version 6.11), SAS Inst. Inc., Cary, NC, (1996).
- [32] Schnoebelen-Combes S., Louveau I., Postel-Vinay M.C., Bonneau M., Ontogeny of GH receptor and GH-binding protein in the pig, *J. Endocrinol.* 148 (1996) 249–255.
- [33] Simmen F.A., Badinga L., Green M.L., Kwak I., Song S., Simmen R.C.M., The porcine insulin-like growth factor system: at the interface of nutrition, growth and reproduction, *J. Nutr.* 128 (1998) 315S–320S.
- [34] Sorensen M.T., Chaudhuri S., Louveau I., Coleman M.E., Etherton T.D., Growth hormone binding proteins in pig adipose tissue: number, size and effects of pGH treatment on pGH and bGH binding, *Domest. Anim. Endocrinol.* 9 (1992) 13–24.
- [35] Takenaka A., Takahashi S.I., Noguchi T., Effect of protein nutrition on insulin-like growth factor-I (IGF-I) receptor in various tissues of rats, *J. Nutr. Sci. Vitaminol.* 42 (1996) 347–357.
- [36] Thissen J.P., Ketelslegers J.M., Underwood L.E., Nutritional regulation of the insulin-like growth factors, *Endocr. Rev.* 15 (1994) 80–101.
- [37] Villares S.M.A., Gougon L., Maniar S., Delahaye-Zervas M.C., Martini J.F., Kleincknecht C., Postel-Vinay M.C., Reduced food intake is the main cause of low growth hormone receptor expression in uremic rats, *Mol. Cell. Endocrinol.* 106 (1994) 51–56.
- [38] Zak L.J., Cosgrove J.R., Aherne F.X., Foxcroft G.R., Pattern of feed intake and associated metabolic and endocrine changes differentially affect postweaning fertility in primiparous sows, *J. Anim. Sci.* 75 (1997) 208–216.