



HAL
open science

Genetic diversity measures of local European beef cattle breeds for conservation purposes

Javier Cañón, Paolo Alexandrino, Isabel Bessa, Carlos Carleos, Yolanda Carretero, Susana Dunner, Nuno Ferran, David Garcia, Jordi Jordana, Denis Laloë, et al.

► To cite this version:

Javier Cañón, Paolo Alexandrino, Isabel Bessa, Carlos Carleos, Yolanda Carretero, et al.. Genetic diversity measures of local European beef cattle breeds for conservation purposes. *Genetics Selection Evolution*, 2001, 33 (3), pp.311-332. 10.1051/gse:2001121 . hal-00894377

HAL Id: hal-00894377

<https://hal.science/hal-00894377>

Submitted on 11 May 2020

HAL is a multi-disciplinary open access archive for the deposit and dissemination of scientific research documents, whether they are published or not. The documents may come from teaching and research institutions in France or abroad, or from public or private research centers.

L'archive ouverte pluridisciplinaire **HAL**, est destinée au dépôt et à la diffusion de documents scientifiques de niveau recherche, publiés ou non, émanant des établissements d'enseignement et de recherche français ou étrangers, des laboratoires publics ou privés.

Genetic diversity measures of local European beef cattle breeds for conservation purposes

Javier CAÑÓN^{a,*}, Paolo ALEXANDRINO^b,
Isabel BESSA^b, Carlos CARLEOS^c, Yolanda CARRETERO^a,
Susana DUNNER^a, Nuno FERRAN^b, David GARCIA^a,
Jordi JORDANA^d, Denis LALOË^e, Albano PEREIRA^b,
Armand SANCHEZ^d, Katayoun MOAZAMI-GOUDARZI^e

^a Laboratorio de Genética, Facultad de Veterinaria,
Universidad Complutense de Madrid, 28040 Madrid, Spain

^b Faculdade Ciências Porto, 04021 Porto, Portugal

^c Facultad de Ciencias, Universidad de Oviedo, 33007 Oviedo, Spain

^d Facultad de Veterinaria, Universidad Autónoma de Barcelona,
08193 Bellaterra, Spain

^e Institut national de la recherche agronomique, Département de génétique animale,
78352 Jouy-en-Josas, France

(Received 4 August 2000; accepted 2 January 2001)

Abstract – This study was undertaken to determine the genetic structure, evolutionary relationships, and the genetic diversity among 18 local cattle breeds from Spain, Portugal, and France using 16 microsatellites. Heterozygosities, estimates of F_{st} , genetic distances, multivariate and diversity analyses, and assignment tests were performed. Heterozygosities ranged from 0.54 in the Pirenaica breed to 0.72 in the Barrosã breed. Seven percent of the total genetic variability can be attributed to differences among breeds (mean $F_{st} = 0.07$; $P < 0.01$). Five different genetic distances were computed and compared with no correlation found to be significantly different from 0 between distances based on the effective size of the population and those which use the size of the alleles. The Weitzman recursive approach and a multivariate analysis were used to measure the contribution of the breeds diversity. The Weitzman approach suggests that the most important breeds to be preserved are those grouped into two clusters: the cluster formed by the Mirandesa and Alistana breeds and that of the Sayaguesa and Tudanca breeds. The hypothetical extinction of one of those clusters represents a 17% loss of diversity. A correspondence analysis not only distinguished four breed groups but also confirmed results of previous studies classifying the important breeds contributing to diversity. In addition, the variation between breeds was sufficiently high so as to allow individuals to be assigned to their breed of origin with a probability of 99% for simulated samples.

local beef cattle breeds / microsatellite / genetic diversity

* Correspondence and reprints

E-mail: jcanon@eucmax.sim.ucm.es

1. INTRODUCTION

During the last forty years, it has become clear that biochemical analyses of genetic variation can provide valuable insight into the genetic structure and evolutionary history of cattle populations. Studies have been undertaken on a broad scale to encompass populations not only from different regions of the globe but also at a local level among closely related populations within particular regions [4,18,22,30,33,38]. Manwell and Baker [31] were the first to present a phylogenetic tree for the ten major cattle breed-groups of Europe, Western Asia, and Northern Africa. By reviewing the data on protein polymorphism, they were able to demonstrate that it was in positive agreement with morphological and geographical divisions of the major breed-groups. They were not able, however, to study relationships between individual breeds.

More recently, molecular techniques have provided new markers for the study of genetic variation [6,27,37]. Among these, microsatellites (repetitive elements containing simple sequence motifs, usually dimers or trimers) have quickly become the favourite agents for population genetic studies as they offer advantages which are particularly appropriate in conservation projects. First, they are widely available. Second, they exhibit a high degree of polymorphism. Third, as genetic systems, they are comparatively easy to automate with the possibility of multiplex amplification of up to five loci in a single PCR reaction and of multiple loadings of up to fifteen loci per lane in some highly optimised gel systems. In addition, it is assumed they are neutral to selection, the observed genetic diversity being the consequence of two forces: genetic drift and mutation.

In the last five years, different studies of genetic relationships between cattle breeds using microsatellites have been published. MacHugh *et al.* [28] analysed 20 microsatellites in different cattle populations from Africa, Europe, and Asia highlighting a marked distinction between humpless (taurine) and humped (zebu) cattle which provides strong support for the hypothesis of a separate origin of domesticated zebu cattle. Studies aimed at characterising relationships within the African group [45] or within the European group of cattle breeds have focused on breeds from Italy [10], Spain [32], Belgium [36], the British Isles [29], France [35], and Switzerland [42]. It is difficult, however, to group the data from these studies together in order to clarify the genetic relationships among the major types of cattle because they do not use a common set of microsatellites. For this reason, the FAO has proposed a list of thirty microsatellites for the analysis of genetic diversity in European cattle breeds.

The primary goal of this study is to assess the genetic variation within, and between, breeds and groups of breeds. A secondary aim is to define a diversity measure which will permit the ranking of breeds for conservation purposes thus providing useful information concerning the relative contribution

to genetic diversity of 18 local cattle breeds from Spain, Portugal, and France using 16 microsatellites (15 of which are from the FAO list).

2. MATERIALS AND METHODS

2.1. Cattle breeds

The breeds included in this study (Tab. I) are characterised by a widespread regional distribution, small population size, and ties to traditional production systems.

Regarding their morphological attributes, most of the breeds show pigmentation similar to their wild ancestor, from reddish-brown to brownish-black, with black pigmentation restricted to the extremities (Alistana, Mirandesa, Maronesa, Barrosã, Asturiana de los Valles, Asturiana de la Montaña, Aubrac). In some breeds (Tudanca, Gasconne and Bruna) red pigmentation tends to lighten considerably as the animals age. The most commonly observed variants are solid black (Morucha and Avileña) and red pigmentation (Retinta, Alentejana, Pirenaica, Salers) although a colour-sided (Mertolenga) breed was also found in this study. Most of the breeds included in the project have never been exposed to reproductive technology or other breeding tools related to artificial discriminative mating thus limiting the male and female gene flow between breeds with individual dispersion only at local levels. Nevertheless, the lack of organised studbooks, most of them created recently, for many of the breeds has facilitated a certain degree of genetic introgression between them.

2.2. Sampling of populations

The sampling process is of great importance as it allows us to determine the kind of inferences which can be made. In order to reflect the current genetic composition, individuals can be considered to have been sampled at random within-generation.

Fresh blood collected in a conservative buffer was taken from 50 individuals (25 males and 25 females).

2.3. Genetic loci studied

The 16 microsatellite loci studied were: CSSM 66, ETH 10, ETH 152, ETH 225, ETH 3, HEL 1, HEL 5, HEL 9, ILSTS 005, INRA 023, INRA 032, INRA 035, INRA 037, INRA 005, INRA 063, and TGLA 44. References and primer sequences are described in Table II. TGLA 44 is the only locus not included in the European Concerted Action AIRE2066 list (FAO list).

Table I. Summary statistics for beef cattle breeds used in microsatellite marker analysis of population structure showing geographical location, sample size (N), observed (H_o) and expected (H_e) heterozygosity and average number of alleles per locus (MNA). Standard errors in parentheses.

Breed	Origin of the samples	N	H_o	H_e	MNA
Alistana	Spain	50	0.629 (0.032)	0.681 (0.027)	6.9 (0.8)
Asturiana Montaña	Spain	50	0.652 (0.037)	0.705 (0.034)	6.6 (0.7)
Asturiana Valles	Spain	50	0.656 (0.045)	0.683 (0.042)	7.0 (0.7)
Sayaguesa	Spain	50	0.654 (0.031)	0.707 (0.028)	6.4 (0.6)
Tudanca	Spain	50	0.596 (0.040)	0.651 (0.036)	6.8 (0.8)
Avileña Negra-Ibérica	Spain	50	0.589 (0.043)	0.692 (0.034)	6.9 (0.7)
Bruna del Pirineus	Spain	50	0.619 (0.033)	0.672 (0.030)	7.1 (0.7)
Morucha	Spain	50	0.640 (0.036)	0.709 (0.039)	6.9 (0.7)
Pirenaica	Spain	50	0.543 (0.052)	0.628 (0.037)	5.8 (0.4)
Retinta	Spain	50	0.614 (0.040)	0.693 (0.033)	6.8 (0.6)
Alentejana	Portugal	50	0.622 (0.054)	0.655 (0.052)	5.8 (0.5)
Barrosã	Portugal	50	0.716 (0.037)	0.708 (0.039)	6.7 (0.6)
Maronesa	Portugal	49	0.635 (0.045)	0.664 (0.041)	6.1 (0.6)
Mertolenga	Portugal	50	0.626 (0.039)	0.671 (0.035)	5.9 (0.5)
Mirandesa	Portugal	50	0.625 (0.037)	0.635 (0.026)	5.5 (0.4)
Aubrac	France	50	0.569 (0.043)	0.611 (0.036)	6.2 (0.6)
Gasconne	France	50	0.630 (0.039)	0.708 (0.023)	7.2 (0.6)
Salers	France	50	0.580 (0.046)	0.631 (0.036)	6.1 (0.6)

2.4. DNA extraction and PCR amplification

DNA was extracted using established procedures [20,41] that guarantee long-term stability of DNA samples. Primers and Polymerase Chain Reaction (PCR) conditions are described in Table II. The PCR analysis of microsatellites was carried out by loading onto standard 7% polyacrilamide denaturing gel using silver staining [2] or fluorescent-labelled PCR primer methods through an automated DNA fragment analyser (Applied Biosystem 373 or 377). In order to ensure the compatibility of results from different equipment and laboratories, 3 types of reference DNA were used: Type 1 = reference DNAs ($n = 9$) from the AIRE 2006, Type 2 = reference DNA ($n = 4$) from this project, Type 3 = reference DNA ($n = 2$) from individual laboratories. Moreover, the accurate sizing of allele fragments of these 15 reference DNAs was checked by each of the four laboratories involved in the study. In addition, to ensure the compatibility of results within each laboratory, Type 3 DNAs were used as standards for each loaded gel.

Table II. References, primer sequences, chromosomal location, mean (Hs) and total (Ht) heterozygosity and experimental parameters for 16 microsatellite markers. *(continued on the next page)*

Locus	Reference	Primer sequences (5'-3')	Chrom.	T _m (deg)	MgCl ₂ (mM)	Cycles	Detected Size range (bp)	Hs	Ht
CSSM 66	Steffen <i>et al.</i> [46]	P1: ACA CAA ATC CTT TCT GCC AGC TGA P2: AAT TTA ATG CAC TGA GGA GCT TGG	14	55	1.5	30	209–177	0.826	0.859
ETH 10	Steffen <i>et al.</i> [46]	P1: GTT CAG GAC TGG CCC TGC TAA CA P2: CCT CCA GCC CAC TTT CTC TTC TC	5	55	1.5	30	225–207	0.729	0.760
ETH 152	Fries <i>et al.</i> [14]	P1: TAC TCG TAG GGC AGG CTG CCT G P2: GAG ACC TCA GGG TTG GTG ATC AG	5	55	1.5	30	211–181	0.685	0.737
ETH 225	Fries <i>et al.</i> [14]	P1: GAT CAC CTT GCC ACT ATT TCC T P2: ACA TGA CAG CCA GG6T GCT ACT	9	55	1.5	30	155–131	0.736	0.774
ETH 3	Fries <i>et al.</i> [14]	P1: GAA CCT GCC TCT CCT GCA TTG G P2: ACT CTG CCT GTG GCC AAG TAG G	19	55	1.5	30	133–109	0.723	0.772
HEL 1	Kaukinen and Varvio [23]	P1: CAA CAG CTA TTT AAC AAG GA P2: AGG CTA CAG TCC ATG GGA TT	15	55	1.5	30	117–103	0.641	0.681
HEL 5	Kaukinen and Varvio [23]	P1: GCA GGA TCA CTT GTT AGG GA P2: AGA CGT TAG TGT ACA TTA AC	21	55	1.5	30	171–147	0.736	0.790
HEL 9	Kaukinen and Varvio [23]	P1: CCC ATT CAG TCT TCA GAG GT P2: CAC ATC CAT GTT CTC ACC AC	8	55	1.5	30	169–143	0.750	0.818

Table II. Continued.

Locus	Reference	Primer sequences (5'-3')	Chrom.	T _m (deg)	MgCl ₂ (mM)	Cycles	Detected Size range (bp)	H _s	H _t
ILSTS 005	Brezinsky <i>et al.</i> [7]	P1: GGA AGC AAT GAA ATC TAT AGC C P2: TGT TCT GTG AGT TTG TAA GC	10	55	1.5	30	186–184	0.385	0.409
INRA 023	Vaiman <i>et al.</i> [51]	P1: GAG TAG AGC TAC AAG ATA AAC TTC P2: TAA CTA CAG GGT GTT AGA TGA ACT C	3	55	1.5	30	221–197	0.776	0.865
INRA 032	Vaiman <i>et al.</i> [51]	P1: AAA CTG TAT TCT CTA ATA GCA C P2: GCA AGA CAT ATC TCC ATT CCT TT	11	55	1.5	30	190–166	0.703	0.755
INRA 035	Vaiman <i>et al.</i> [51]	P1: ATC CTT TGC AGC CTC CAC ATT G P2: TTG TGC TTT ATG ACA CTA TCC G	16	55	1.5	30	114–102	0.442	0.488
INRA 037	Vaiman <i>et al.</i> [51]	P1: GAT CCT GCT TAT ATT TAA CCA C P2: AAA ATT CCA TGG AGA GAG AAA C	4	55	1.5	30	144–114	0.628	0.687
INRA 005	Vaiman <i>et al.</i> [50]	P1: CAA TCT GCA TGA AGT ATA AAT AT P2: CTT CAG GCA TAC CCT ACA CC	12	55	1.5	30	147–139	0.624	0.655
INRA 063	Vaiman <i>et al.</i> [51]	P1: AIT TGC ACA AGC TAA ATC TAA CC P2: AAA CCA CAG AAA TGC TTG GAA G	18	55	1.5	30	187–171	0.632	0.654
TGLA 44	George <i>et al.</i> [15]	P1: AAC TGT ATA TTG AGA GCC TAC CAT G P2: CAC ACC TTA GCG ACT AAA CCA CCA	2	55	1.5	30	178–144	0.750	0.811

2.5. Statistical analysis

The BIOSYS-1 package [47] was used to compute allele frequencies by direct counting, as well as the number of alleles, and unbiased estimates for expected (H_e) and observed (H_o) heterozygosity.

Different genetic distances clustered into three groups were used: 1) genetic distances considered appropriate under a pure drift model where genetic drift was assumed to be the main factor in genetic differentiation among closely related populations or for short-term evolution [39, 48, 52] – using the traditional differentiation-between-population estimator F_{ST} [55] and the Reynolds genetic distance estimator [39]; 2) genetic distances that assume a step-wise-mutation model, *i.e.*, average squared distance [16] and delta-mu squared distance [17]; 3) a non-metric genetic distance based on the proportion of shared alleles [5]. All genetic distances were estimated using MICROSAT [34] except for the Reynolds distance for which the PHYLIP package [13] was used. The product-moment correlation (r) and Mantel test statistic were computed for pairwise comparisons of distance matrices.

After defining groups of breeds by country or by trunk (a set of breeds with a hypothetical common ancestor) using *a priori* information, a hierarchical analysis of variance was carried out which permitted the partitioning of the total genetic variance into components due to inter-individual differences on the one hand and inter-breed differences on the other. Variance components were then used to compute fixation indices [55] and their significance tested using a non-parametric permutation approach described by Excoffier *et al.* [12]. Computation was carried out using the AMOVA (Analysis of Molecular Variance) programme implemented in the ARLEQUIN package [43].

2.5.1. Multivariate correspondence analysis

Phylogenetic reconstruction and the use of genetic distances do not take into account the effects of admixtures between branches. Alternatively, the representation of genetic relationships among a group of populations may be obtained using multivariate techniques which can condense the information from a large number of alleles and loci into a few synthetic variables.

Correspondence Analysis [3, 26] is a multivariate method analogous to the Principal Components analysis but which is appropriate for categorical variables and leads to a simultaneous representation of breeds and loci as a cloud of points in a metric space. As with the Principal Components analysis, axes, which are ranked according to their fraction of information, span this space with each axis independent of the others. Inertia, or dispersion, measures this information, *i.e.*, the direction of maximum inertia is the direction in which the cloud of points is the most scattered. The basic concept of inertia can be related to the well-established population parameter F_{ST} [19] as well as to genetic diversity [24].

Allele frequencies of all loci were used as variables to spatially cluster the breeds using a correspondence analysis based on Chi-square distances to judge proximity between them.

2.5.2. Computing diversity

Following the Weitzman approach [53,54], the Reynolds genetic distances were used to compute marginal losses of genetic diversity. After transforming the genetic distance matrix into a distance matrix with ultrametric properties, a maximum likelihood tree was drawn using NTSYS [40].

2.5.3. Breed assignment

The assignment of an anonymous animal i to a set of breeds, r_1, \dots, r_n , was based on the maximum likelihood discriminate rule, *i.e.*, animal i was assigned to the population which maximises the conditional probability ($P[i|r]$). Let $\hat{P}_{r,l,a}$ be the frequency of allele a in the l locus and r breed, then $P[i|r] = \prod_l h(i, l) \hat{P}_{r,l,a_{i1}} \hat{P}_{r,l,a_{i2}}$, where $h(i, l) = 1$ if $a_{i1} = a_{i2}$ and $h(i, l) = 2$ if $a_{i1} \neq a_{i2}$. When one allele was missing in a specific population, we assigned a small, but positive, probability of the allele in this breed ($1/(2n+1)$) where n was the sample size of the breed [44]. A traditional way of expressing the significance of a particular result is by using the log of likelihood ratio (LOD). If the interest is to classify an anonymous sample in one of two possible populations, it is necessary to determine the distribution of the appropriate statistic under the null hypothesis (H_0) by bootstrap or by simulating allele frequencies. Given that it is not possible to directly determine the LOD distribution when many loci are used, we simulated 100 000 genotypes per breed using allele frequencies according to the assumptions of Hardy-Weinberg and linkage equilibrium. The frequency at which each animal was correctly assigned to its breed provided the probability of assignment, and the distribution of the LODs for pairs of breeds, or populations, allowed for the construction of confidence thresholds.

3. RESULTS

3.1. Variation within, and among, populations

A total of 173 distinct alleles were detected across the 16 loci analysed. The mean number of alleles (MNA) per locus per breed was 6.5 (Tab. I).

Observed and expected heterozygosities per breed ranged from 0.54 (Pirenaica) to 0.72 (Barrosã), and from 0.61 (Aubrac) to 0.71 (Asturiana de Montaña, Barrosã, Morucha and Sayaguesa) respectively (Tab. I).

Levels of apparent breed differentiation were considerable with multilocus F_{ST} values indicating that around 7% of the total genetic variation corresponded to differences between breeds while the remaining 93% corresponded to differences among individuals.

Table III presents F_{ST} values when breeds were considered in pairs. Genetic differentiation values among breeds ranged from 3% for the Aubrac-Salers pair to 15% for the Mirandesa-Tudanca pair. All values were different from 0 ($P < 0.01$). Values above the diagonal in Table III represent the number of individuals between populations exchanged per generation (Nm , where N is the total effective number of animals and m the migration rate) which balanced the diversifying effect of the genetic drift.

The AMOVA analysis permitted the partitioning of the genetic variability between different sources of variation – hypothetical trunks, or countries – and breeds were the main factors in the analysis carried out in this study. Results of the analysis of variance are shown in Table IV. Clearly, variability (excluding individual variability) was taken into account when looking at the breed factor leaving a low, yet significant, genetic variability ($< 1.5\%$) at the trunk (Tab. IVa), or country level (Tab. IVb). Less than 1.5 per cent of the total genetic differences detected was due to the hypothetical trunk (1.43) or to the country of origin (1.36) to which the breeds were assigned.

3.2. Correspondence Analysis

The first two axes contribute 14% and 13% of the total inertia respectively (Fig. 1). The Sayaguesa breed was isolated from the others and represents 12% of the total inertia relative to the other 18 breeds. Axis 1 separates the Mirandesa and Alistana breeds as well but shows no special proximity between the two. Axis 2 separates two blocks: block I (Gasconne, Salers, Aubrac, Bruna) and Block II (Mirandesa, Alistana, Sayaguesa).

The most important alleles are INRA 032 (170 bp) which contributes 17% in Axis 1 and 9% in Axis 2, and ETH 3 (109 bp) which contributes 8% and 6% in Axis 1 and 2, respectively. Allele INRA 032 (170 bp) is a nearly unique characteristic of the Sayaguesa breed with a frequency of 40% that was absent in the other breeds except the Gasconne and Salers (4% and 1%, respectively). Although this allele appeared in only 9% of the entire breed population studied, allele ETH 3 (109 bp) can be closely associated with the Alistana and Mirandesa breeds which demonstrated a 34% and 58% frequency, respectively.

Observing the importance of allele INRA 032 (170 bp), the analysis was repeated excluding this microsatellite, enabling us to detect a change in the axes – a 15% change in the first axis separating the Alistana and Mirandesa from the other breeds and an 11% change in the second axis separating the Sayaguesa from the others. It became clear at this point that inertia, explained by the

Table IV. Partitioning of genetic variability among the different sources of variation.

(a)

Source of variation	Degree of freedom	Sum of squares	Variance components	Percentage of variation	Fixation indices
Among trunks ⁽¹⁾	5	311.13	0.083	1.43	$F_{SC} = 0.057$
Among breeds within trunks	12	455.98	0.327	5.65	$F_{ST} = 0.071$
Within breeds	1 780	9 557.8	5.37	92.9	$F_{CT} = 0.014$
Total	1 797	10 325.8	5.78		

⁽¹⁾ The following 6 arbitrary trunks were defined: (Alistana AsturMont AsturVall Tudanca Sayaguesa); (Mirandesa Barrosã Maronesa); (Aubrac Gasconne Salers); (Bruna Pirenaica); (Retinta Alentejana Mertolenga); (Avilena Morucha).

(b)

Source of variation	Degree of freedom	Sum of squares	Variance components	Percentage of variation	Fixation indices
Among countries	2	163.3	0.079	1.36	$F_{SC} = 0.061$
Among breeds within countries	15	603.8	0.35	6.02	$F_{ST} = 0.074$
Within breeds	1 780	9 558.7	5.37	92.6	$F_{CT} = 0.014$
Total	1 797	10 325.8	5.78		

change from 12% to 7.2% in the Sayaguesa breed, no longer discriminated this breed from the rest since, for example, the Mirandesa had an inertia of 9.4%.

In summary, the Sayaguesa is a breed which can be differentiated from the others, however, this result was obviously amplified by the presence of allele INRA 032 (170 bp) which was present in 40% of the breed and absent, or rare, in the other breeds. Taking into account the position of the Sayaguesa breed, we repeated the analysis excluding this breed. This caused a radical change in the results, which created a zooming-in effect on the other 17 breeds and thus facilitated our ability to interpret the findings.

In this case, Axis 1 explains 16% of the inertia and separates Block 1 (Gasconne, Salers, Aubrac, Pirenaica and Bruna) from Block 2 (Alistana and Mirandesa). The alleles which contributed the most in this axis were INRA 032 (170 bp) (12% contribution) and INRA 037 (126 bp) (6% contribution), the latter having a mean frequency of 17%. INRA 037 (126 bp) could also be found in the Alistana and Mirandesa breeds with frequencies of 41 and 54% respectively though these frequencies were much lower in the Gasconne (4%), Salers (2%), Aubrac (3%), and Pirenaica (11%) breeds. Axis 2 explains 11%

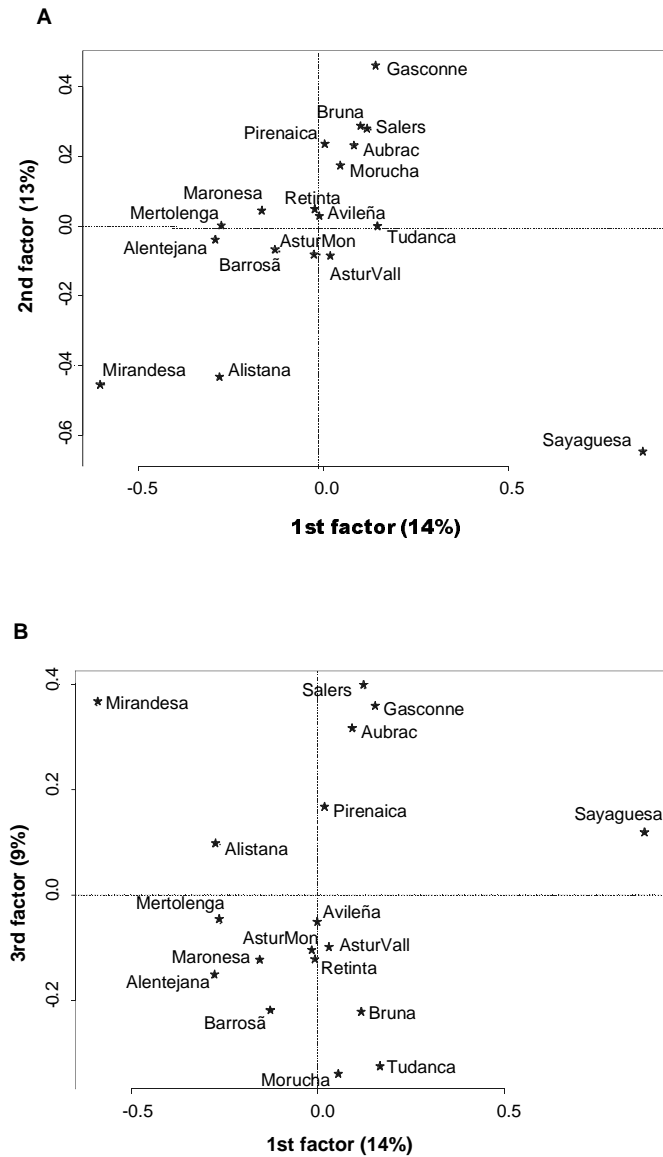


Figure 1. Correspondence analysis of allele frequencies from 16 microsatellite loci typed in eighteen bovine breeds: A) Projection of breeds on axes 1 and 2, B) Projection of breeds on axes 1 and 3.

of the inertia and separates the Morucha, Tudanca, and Bruna block from the Gasconne, Salers, Aubrac and Pirenaica (excluding the Bruna) group. Axis 3 explains 10% of the inertia and singles out the Mertolenga, Barrosã, Maronesa and Alentejana block.

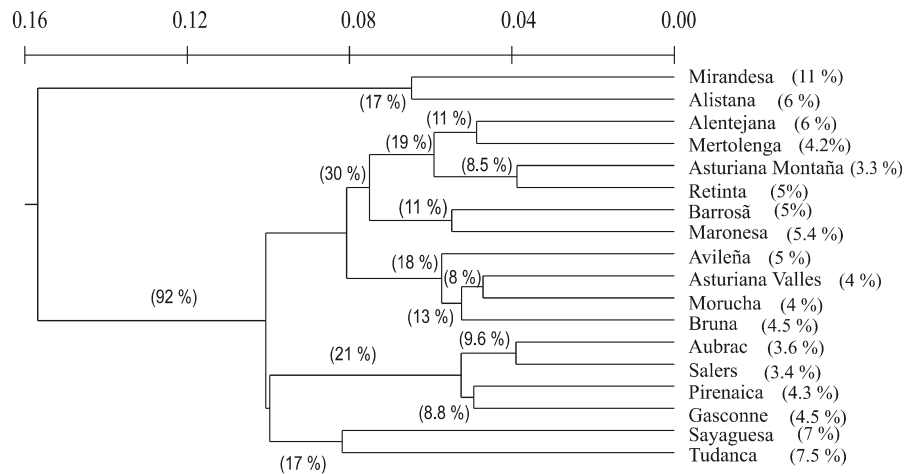


Figure 2. Tree of relationships among 18 local cattle breeds. Values in brackets represent the loss of diversity caused by the extinction of a breed or a set of breeds.

3.3. Evaluation of diversity

In contrast to traditional hierarchical clustering methods, the use of the concepts of link and representative elements (breeds) allows for a unique topology [49]. The tree generated by the algorithm (Fig. 2) has the property of a maximum evolutionary likelihood and the diversity function defined is equal to the total branch length of the tree. The loss of diversity caused by the extinction of a breed, or a set of breeds, can be approximately inferred by looking at the tree or can be exactly quantified by recalculating the total amount of diversity after eliminating the breed, or set of breeds, in question. For instance, a value of 11 585 was found when computing the diversity of the initial set of breeds, and it dropped down to 10 712, a 17% loss of diversity, after the elimination of the Sayaguesa and Tudanca breeds.

3.4. Breed assignment

Results for the assignment of animals to populations using 16 microsatellites are presented in Table V, where the assignment of 100 000 simulated individuals to the breeds is shown. Misclassified individuals were distributed among all breeds. The Sayaguesa and Mirandesa were the breeds most often correctly classified, and the Retinta and Barrosã those most frequently misclassified. Apart from the Salers breed in which 50% of the misclassified individuals were assigned to the Aubrac breed, we did not observe any systematic assignment of animals from one breed to another.

The set of markers used in this study provided a high discriminant power between pairs of breeds: for two closely related populations as are both

Table V. Breed assignment using 16 microsatellites and the maximum likelihood classification rule for eighteen bovine breeds.

	Alistana	Asturleon	AsturVall	Sayaguesa	Tudanca	Alentejana	Barrosa	Maronesa	Merolenga	Mirandesa	Aubrac	Gasconne	Salers	Avileña	Bruna	Morucha	Pirenaica	Retinta
Alistana	97.7	0.3	0.5	0.03	0.3	0.04	0.2	0.04	0.00	0.6	0.02	0.00	0.05	0.06	0.1	0.04	0.08	0.06
AsturMon	0.3	95.2	0.5	0.04	0.2	0.5	0.6	0.2	0.2	0.1	0.2	0.02	0.2	0.2	0.2	0.4	0.2	0.7
AsturVall	0.7	0.5	94.5	0.1	0.3	0.5	0.5	0.2	0.2	0.1	0.05	0.1	0.2	0.4	0.4	0.4	0.3	0.4
Sayaguesa	0.05	0.03	0.2	99.4	0.05	0.04	0.04	0.00	0.02	0.00	0.00	0.01	0.01	0.05	0.01	0.02	0.02	0.06
Tudanca	0.2	0.3	0.2	0.02	97.6	0.06	0.3	0.07	0.02	0.01	0.1	0.02	0.07	0.1	0.1	0.5	0.1	0.2
Alentejana	0.09	0.2	0.1	0.00	0.04	96.8	0.2	0.1	0.7	0.2	0.06	0.06	0.01	0.2	0.04	0.5	0.1	0.4
Barrosa	0.3	0.5	0.6	0.02	0.3	0.7	93.9	1.1	0.8	0.2	0.02	0.2	0.00	0.3	0.1	0.4	0.2	0.4
Maronesa	0.1	0.2	0.2	0.02	0.1	0.3	1.7	95.6	0.4	0.1	0.03	0.1	0.07	0.2	0.04	0.3	0.2	0.2
Merolenga	0.01	0.1	0.08	0.00	0.04	0.8	0.6	0.3	96.4	0.2	0.2	0.08	0.04	0.08	0.02	0.06	0.5	0.5
Mirandesa	0.3	0.02	0.06	0.00	0.00	0.1	0.1	0.04	0.3	98.9	0.03	0.01	0.00	0.05	0.00	0.01	0.03	0.06
Aubrac	0.02	0.2	0.04	0.01	0.08	0.1	0.06	0.01	0.2	0.03	95.1	0.7	2.1	0.3	0.1	0.1	0.8	0.08
Gasconne	0.01	0.3	0.2	0.01	0.05	0.1	0.2	0.09	0.03	0.00	0.9	95.2	0.8	0.2	0.2	0.3	1.1	0.4
Salers	0.06	0.1	0.1	0.01	0.08	0.01	0.02	0.01	0.03	0.02	1.8	0.5	96.4	0.08	0.2	0.06	0.4	0.1
Avileña	0.2	0.1	0.3	0.05	0.1	0.6	0.2	0.2	0.2	0.1	0.4	0.3	0.2	95.1	0.3	0.4	0.4	0.5
Bruna	0.1	0.2	0.3	0.01	0.2	0.04	0.01	0.03	0.03	0.02	0.06	0.1	0.3	0.2	96.5	1.0	0.7	0.2
Morucha	0.05	0.4	0.2	0.01	0.2	0.5	0.3	0.5	0.5	0.02	0.2	0.2	0.08	0.2	1.0	95.7	0.2	0.4
Pirenaica	0.08	0.07	0.2	0.00	0.04	0.2	0.03	0.05	0.5	0.08	0.9	0.7	0.5	0.1	0.6	0.2	95.3	0.5
Retinta	0.1	0.6	0.2	0.03	0.2	0.7	0.3	0.4	0.8	0.1	0.1	0.3	0.08	0.6	0.2	0.5	0.6	94.2

Asturiana breeds, only 1.2% of the individuals were misclassified. This can be interpreted from a classical hypothesis testing point of view; if for a certain anonymous sample the test " H_0 : the sample is Asturiana de Valles, H_1 : the sample is Asturiana de Montaña" is carried out and we set a conservative significance level (0.01), the power of the test ($1 - \text{Pr}(\text{type II error})$) is 0.98.

4. DISCUSSION

Assuming that we are working with a neutral polymorphism, three forces remain that can be used to explain the genetic diversity observed: mutation, genetic drift, and migration. Since mutation is important only when studying long periods of time, we accept that the forces to be considered in this sort of study are genetic drift, the source which contributes to diversity, and migration, the opposite force which tends to homogenise the breeds. Reproductive isolation, a consequence of the local use and management of a breed, reduces the effective population size and contributes to a genetic subdivision that can be detected through drift-based measures based on variations observed when using the microsatellite loci.

The degree of genetic differentiation among the breeds studied and the high levels of significance for the between-population F_{ST} estimates indicate a relatively low gene flow between these breeds and, equivalently, a relatively high reproductive isolation. It is also clear that most of the genetic variation is inter-individual and only less than seven percent of the total variation is due to breed differences.

Migration values (Nm) can be interpreted in the context of the conservation and maintenance of the genetic variability of an animal as the upper limit of the number of migrants per generation which would allow for maintenance of the genetic differentiation observed between the breeds.

Although ancestral trunks are evident in studies based on morphological traits, *e.g.* Jordana *et al.* [21], they are not nearly as apparent when using neutral information to assign breeds to clusters such as the Brown trunk (both Asturian breeds, Alistana, Sayaguesa, Tudanca, etc.), Turdetanus trunk (Pirenaica and Bruna), or Iberian trunk (Avileña and Morucha). Results of this study are confusing since a similar magnitude of differentiation was found among breeds within a trunk or country (5.7% and 6.1% respectively). F_{SC} and F_{ST} are measures of the degree of resemblance between individuals within a breed. This resemblance can be interpreted as the differences between individuals in different breeds and expressed as the differences between breeds as a proportion of the total genetic variance (F_{ST}) or as a proportion of the trunk or country variance (F_{SC}). Conversely, the parameter F_{CT} is a measure of the degree of resemblance between individuals of a trunk, or country, expressed as a proportion of the total variance. The degree of genetic differentiation among

Table VI. Randomized Mantel test statistic (*Z*) for distance matrix comparison.

	F_{ST}	Allele sharing	Deltamu	Average ^(a)
Reynolds	0.999 ^(b)	0.918 ^(b)	0.304	-0.215
F_{ST}		0.917 ^(b)	0.298	-0.223
Allele sharing			0.359	-0.142
Deltamu				0.547

^(a) Average squared distance.

^(b) $\text{Pr}[\text{random } Z \geq \text{observed } Z] < 0.01$.

breeds of different trunks, or countries, was 7.1 and 7.4% respectively, values which are very close to the global degree of genic differentiation among breeds ($F_{ST} = 6.8$) and which clearly show the small genetic contribution the trunk or country factors make.

The lack of correlation between the group of genetic distance measurements which apply under a classical random drift-mutation model and the group which applies under the pure drift model (Tab. VI) is a consequence of the nature of the populations included in this study which cannot be considered as separate, closed populations. European cattle breeds must be considered to be closely related and the main factor describing their genetic variability is random drift. Under this assumption, genetic distances which reflect only the consequences of the genetic drift such as the F_{ST} and Reynolds distances can be considered the most appropriate in measuring the degree of diversification [11], though they could also be inferred comparing the heterozygosity values found with the effective sizes of the breeds, which ranged from 21 (Sayaguesa) (Cañón, personal communication) to over 1 400 (Aubrac, Gasconne) (Renand, personal communication) [25].

Regarding the correspondence analysis, it should be noted that the most significant result was the very strong separation of the Sayaguesa, though this was dependent on the presence of a special allele. This result is obviously not very robust. A very distinct clade is the Gasconne, Pirenaica, Salers and Aubrac block. An Alistana and Mirandesa block was easily distinguished as well even though these two breeds were not very close to one another. Finally, there is the Mertolenga, Barrosa, Alentejana and Maronesa block, though it is less homogeneous than the two cited above.

Looking at Figure 2, where the contribution of each breed to diversity and clade is represented, it is clear that the reduction in diversity as a consequence of the extinction of a clade equals the sum of the reductions caused by the extinction of the breeds which composed the clade. This additive property occurs only if breeds are independent, *e.g.*, the loss of the Mirandesa and Alistana has this property. However, the joint extinction of the Sayaguesa and

Tudanca breeds reduces the total diversity by a greater magnitude than the sum of the two, so they cannot be considered as independent from each other. An interesting question is to what extent both procedures, correspondence analysis and the Weitzman approach, give similar results. It must be emphasised that a correspondence analysis exploits within-breed variability while the Weitzman approach does not. The correlation between the contribution of breeds to diversity, computed by the Weitzman procedure, and the correspondence analysis (inertia) when the complete set of 16 markers and INRA 032 were eliminated, was 0.54 and 0.64 ($p < 0.05$), respectively. Moreover, if we consider the four breeds which contributed the most to diversity, three of them (Mirandesa, Sayaguesa and Alistana) were always present, independently of the analysis procedure used.

Two additional considerations with respect to the Weitzman diversity function refer to the caution needed when interpreting the graphical representation as a phylogenetic tree. Indeed it is only a representation of the diversity found at the current time and the sensitivity of the graphical representation from the model used to study the divergence among the breeds. The order of the breeds appearing in the tree strongly depends on the force (random drift or mutation) considered to be the determinant of the observed diversity. When F_{ST} and Reynolds genetic distances were used, breeds ranked in a similar order (Spearman correlation = 1.0); however, no rank correlation was found to be significantly different from 0 between the breed-order computed using former distances based on effective population size and the breed-order calculated using those genetic distances which are based on the size of the alleles. It should be noted that, despite criticism of the Weitzman approach [49], it continues to be a valid method of determining priorities for conservation investments, if we know the relationships of breeds to each other, the survival probability distribution functions and the costs of improving breed survival.

A different argument showing that hypervariable microsatellites with a high level of heterozygosity and a large number of alleles, provide an efficient way of evaluating genetic diversity between the bovine breeds considered, can be demonstrated by observing their statistical power for breed-affiliation estimation. The results presented in Table V demonstrate the possibility of assigning breed identities to anonymous bovine samples as has been previously shown in equines [9], cattle [29], sheep [8] and humans [44]. These molecular markers provide a powerful tool for measuring the genetic differentiation between breeds of domestic species.

5. CONCLUSIONS

The main objective of conservation genetics is to preserve variability within populations under the hypothesis of correlation between genetic variation and

population viability. Avoidance of inbreeding has often been considered as synonymous with heterozygosity maintenance. Heterozygosity is retained through the maximisation of the inbreeding effective size, which primarily depends on the parental generation size. In populations with known pedigrees, as is the case in this study, maximising effective size while ignoring the ancestry of each individual may not be the most effective strategy for maintaining genetic diversity. Instead, a strategy that utilises all pedigree information would better serve to preserve genetic variation. Unfortunately, many of the local breeds included in this study have incomplete pedigrees and one or both parents of some individuals are unknown. In this context, the application of molecular information can solve some of the uncertainties since it is useful when identifying pedigree relationships and the genetically most important animals in order to maximise founder genome equivalents. Moreover, although additional information on productive, morphological, and fitness-related traits should be taken into account when ranking breeds for preservation purposes, strategies based on neutral markers can be efficient in maximising the retention of the highest number of neutral and non-neutral alleles in small populations [1].

This study contributes to the knowledge of the genetic diversity across different countries and to the molecular characterisation of limited-size populations, many of which are under threat of extinction. It also shows how microsatellites can be used to construct an appropriate measure of diversity function through the genetic relationships between populations. Additionally, the present study provides reasonable statistical power for breed assignment regardless of whether breeds are closely related or not. These issues allow for future management of the breeds to be based on greater knowledge of their genetic structuring and the relationships between their populations.

ACKNOWLEDGEMENTS

This study received the financial support of the EC DGVI FII.3 (contract FAIR1 CT95 0702). Additional support was provided by CICYT (contract AGF96–1950-CE/95). Blood samples from the Sayaguesa and Alistana breeds were provided by E. Matorra and J.E. Yanes, and from the Tudanca breed by R. Sainz. We would also like to thank ASEAVA, ASEAMO, UNION AUBRAC, UPRA SALERS, UPRA GASCONNE and Alain Havy from the Institut de l'Élevage for their help in blood sampling.

REFERENCES

- [1] Bataillon T.M., David J.L., Schoen D.J., Neutral genetic markers and conservation genetics: simulated germplasm collections, *Genetics* 144 (1996) 409–417.

- [2] Bassam B.J., Caetano-Anolles G., Gresshoff P.M., Fast and sensitive silver staining of DNA in polyacrylamide gels, *Anal. Biochem.* 196 (1991) 80–83.
- [3] Benzécri J.P., *Analyse des données*. Tome 2: *Analyse des correspondances*, Dunod, Paris, 1973.
- [4] Blott S.C., Williams J.L., Haley C.S., Genetic relationships among European cattle breeds, *Anim. Genet.* 29 (1998) 273–282.
- [5] Bowcock A.M., Ruiz-Linares A., Tomforhde J., Minch E., Kidd J.R., Cavalli-Sforza L.L., High resolution of human evolutionary trees with polymorphic microsatellites, *Nature* 368 (1994) 455–457.
- [6] Bradley D.G., Machugh D.E., Loftus R.T., Sow R.S., Hoste C.H., Cunningham E.P., Zebu-taurine variation in Y chromosomal DNA: a sensitive assay for genetic introgression in west African trypanotolerant cattle populations, *Anim. Genet.* 25 (1994) 7–12.
- [7] Brezinsky L., Kemp S.J., Womack J., Teale A.J., A panel of bovine microsatellite genetic markers, in: *Proceedings of the XXII Conference on Animal Genetics, 1992, Interlakin, Switzerland, International Society for Animal Genetics*.
- [8] Buchanan F.C., Adams L.J., Littlejohn R.P., Maddox J.F., Crawford A.M., Determination of evolutionary relationships among sheep breeds using microsatellites, *Genomics* 22 (1994) 397–403.
- [9] Cañon J., Checa M.L., Carleos C., Vega-Pla J.L., Vallejo M., Dunner S., The genetic structure of Spanish Celtic horse breeds inferred from microsatellite data, *Anim. Genet.* 31 (2000) 39–48.
- [10] Ciampolini R., Moazami-Goudarzi K., Vaiman D., Dillman C., Mazzanti E., Foulley J.L., Leveziel H., Cianci D., Individual multilocus genotypes using microsatellite polymorphisms to permit the analysis of the genetic variability within and between Italian beef cattle breeds, *J. Anim. Sci.* 73 (1995) 3259–3268.
- [11] Eding J.H., Laval G., Measuring genetic uniqueness in livestock, in: J.K. Oldenbroek (Ed.), *Genebanks and the conservation of farm animal genetic resources*, DLO Inst. Anim. Sci. and Health, Leylstad, 1999.
- [12] Excoffier L., Smouse P.E., Quattro J.M., Analysis of molecular variance inferred from metric distances among DNA haplotypes: Application to human mitochondrial DNA restriction data, *Genetics* 131 (1992) 479–491.
- [13] Felsenstein J., PHYLIP (Phylogeny Inference Package) Version 3.5c. Department of Genetics, University of Eashington, Seattle, 1993.
- [14] Fries R., Eggen A., Womack J.E., The bovine genome map, *Mamm. Genome* 4 (1993) 405–28.
- [15] Georges M., Massey J., *Polymorphic DNA markers in bovidae* (World Intellectual Property Org Geneva), Wo. Publi. N° 92/13102, 1992.
- [16] Goldstein D.B., Ruiz-Linares A., Cavalli-Sforza L.L., Feldman M.W., An evaluation of genetic distances for use with microsatellite loci, *Genetics* 139 (1995) 463–471.
- [17] Goldstein D.B., Ruiz-Linares A., Cavalli-Sforza L.L., Feldman M.W., Genetic absolute dating based on microsatellites and the origin of modern humans, *Proc. Nat. Acad. Sci. USA.* 92 (1995) 6723–6727.
- [18] Grosclaude F., Aupetit R.Y., Lefebvre J., Mériaux J.C., Essai d'analyse des relations génétiques entre les races bovines françaises à l'aide du polymorphisme biochimique, *Genet. Sel. Evol.* 22 (1990) 317–338.

- [19] Guinand B., Use of a multivariate model using allele frequency distributions to analyse patterns of genetic differentiation among populations, *Biol. J. Linn. Soc.* 58 (1996) 173–195.
- [20] Jeanpierre M., A rapid method for purification of DNA from blood, *Nucleic Acids Res.* 15 (1987) 9611.
- [21] Jordana J., Pelegrin M., Piedrafita J., Relaciones genéticas en bovinos españoles obtenidas a partir del estudio de caracteres morfológicos, *ITEA* 87 (1991) 50–64.
- [22] Kantanen J., Olsaker I., Adalsteinsson S., Sandberg K., Eythorsdottir E., Pirhonen K., Holm L.E., Temporal changes in genetic variation of North European cattle breeds, *Anim. Genet.* 30 (1999) 16–27.
- [23] Kaukinen J., Varvio S.L., Eight polymorphic bovine microsatellites, *Anim. Genet.* 24 (1993) 148.
- [24] Laloë D., Moazami-Goudarzi K., Souvenir Zafindrajaona P., Analyse des correspondances et biodiversité dans les races domestiques, *Société française de biométrie*, 20 mai 1999, Grenoble, 5 p.
- [25] Laval G., Iannuccelli A., Legault Ch., Milan D., Groenen A.M., Giuffra E., Andersson L., Nissen P.H., Jorgensen C.B., Beeckmann P., Geldermann H., Foulley J.L., Chevalet C., Ollivier L., Genetic diversity of eleven European pig breeds, *Genet. Sel. Evol.* 32 (2000) 187–203.
- [26] Lebart L., Morineau A., Warwick K., *Multivariate Descriptive Statistical Analysis*, J. Wiley, New York, 1984.
- [27] Loftus R.T., MacHugh D.E., Ngere L.O., Balain D.S., Badi A.M., Bradley D.G., Cunningham E.P., Mitochondrial genetic variation in European, African and Indian cattle populations, *Anim. Genet.* 25 (1994) 265–271.
- [28] MacHugh D.E., Shriver M.D., Loftus R.T., Cunningham P., Bradley D.G., Microsatellite DNA variation and the evolution, domestication and phylogeography of taurine and zebu cattle (*Bos taurus* and *Bos indicus*), *Genetics* 146 (1997) 1071–86.
- [29] MacHugh D.E., Loftus R.T., Cunningham P., Bradley D.G., Genetic structure of seven European cattle breeds assessed using 20 microsatellite markers, *Anim. Genet.* 29 (1998) 333–40.
- [30] Mahé M.F., Miranda G., Queval R., Bado A., Souvenir Zafindrajaona P., Grosclaude F., Genetic polymorphism of milk proteins in African *Bos taurus* and *Bos indicus* populations. Characterization of variants α_{s1} -Cn H and β -Cn J, *Genet. Sel. Evol.* 31 (1999) 239–253.
- [31] Manwell C., Baker A.C.M., Biochemical classification of cattle. 2. Phylogenetic tree and specific status of the zebu, *Anim. Blood. Groups. Biochem. Genet.* 11 (1980) 151–162.
- [32] Martin-Burriel I., Garcia-Muro E., Zaragoza P., Genetic diversity analysis of six Spanish native cattle breeds using microsatellites, *Anim. Genet.* 30 (1999) 177–182.
- [33] Medjudorc I., Kustermann W., Lazar P., Russ I., Pirchner F., Marker-derived phylogeny of European cattle supports demic expansion of agriculture, *Anim. Genet.* 25 Suppl. 1 (1994) 19–27.
- [34] Minch E., Ruiz-Linares A., Goldstein D.B., Feldman M.W., Cavalli-Sforza L.L., MICROSAT (version 1.4): a computer program for calculating various statistics on microsatellite allele data, <http://lotka.stanford.edu:microsat.html>, 1995.

- [35] Moazami-Goudarzi K., Laloë D., Furet J.P., Grosclaude F., Analysis of genetic relationships between 10 cattle breeds with 17 microsatellites, *Anim. Genet.* 28 (1997) 338–345.
- [36] Mommens G., Peelman L.J., Van zeveren A., D'Ieteren G., Wissocq N., Microsatellite variation between an African and five European taurine breeds results in a geographical phylogenetic tree with a bison outgroup, *J. Anim. Breed. Genet.* 116 (1999) 325–330.
- [37] Nijman I.J., Bradley D.G., Hanotte O., Otsen M., Lenstra J.A., Satellite DNA polymorphisms and AFLP correlate with *Bos indicus-taurus* hybridization, *Anim. Genet.* 30 (1999) 265–273.
- [38] Queval R., Moazami-Goudarzi K., Laloë D., Mériaux J.C., Grosclaude F., Relations génétiques entre populations de taurins ou zébus d'Afrique de l'Ouest et taurins européens, *Genet. Sel. Evol.* 30 (1998) 367–383.
- [39] Reynolds J., Weir B.S., Cockerham C.C., Estimation of the coancestry coefficient: Basis for a short-term genetic distance, *Genetics* 105 (1983) 767–79.
- [40] Rohlf F.J., NTSYS-pc: Numerical Taxonomy and Multivariate Analysis System, Exeter Software, Heritage Lane, Setauket, New York, 1988.
- [41] Sambrook J., Fritsch E.F., Maniatis T., *Molecular Cloning: a Laboratory Manual*, 2nd ed., Cold Spring Harbor, Cold Spring Harbor Laboratory Press, NY, 1989.
- [42] Schmid M., Saitbekova N., Gaillard C., Dolf G., Genetic diversity in Swiss cattle breeds, *J. Anim. Breed. Genet.* 116 (1999) 1–8.
- [43] Schneider S., Kueffer J.M., Roessli D., Excoffier L., Arlequin ver 1.1: A software for population genetic data analysis, Genetics and Biometry Laboratory, University of Geneva, 1997.
- [44] Shriver M.D., Smith M.W., Jin L., Marcini A., Akey J.M., Deka R., Ferrell R.E., Ethnic-Affiliation Estimation by use of population-specific DNA markers, *Am. J. Hum. Genet.* 60 (1997) 957–964.
- [45] Souvenir Zafindrajaona P., Zeuh V., Moazami-Goudarzi K., Laloë D., Bourzat D., Idriss A., Grosclaude F., Étude du statut phylogénétique du bovin Kouri du lac Tchad à l'aide de marqueurs moléculaires, *Rev. Elev. Méd. Vét. Pays Trop.* 52 (1999) 155–162.
- [46] Steffen P., Eggen A., Dietz A.B., Womack J.E., Stranzinger G., Fries R., Isolation and mapping of polymorphic microsatellites in cattle, *Anim. Genet.* 24 (1993) 121–124.
- [47] Swofford D.L., Selander R.B., BIOSYS-1. A computer program for the analysis of allelic variation in population genetics and biochemical systematics (Release 1.7), University of Illinois, Urbana, Champaign, 1989.
- [48] Takezaki N., Nei M., Genetic distances and reconstruction of phylogenetic trees from microsatellite DNA, *Genetics* 144 (1996) 389–399.
- [49] Thaon d'Arnoldi C., Foulley J.L., Ollivier L., An overview of the Weitzman approach to diversity, *Genet. Sel. Evol.* 30 (1998) 149–161.
- [50] Vaiman D., Osta R., Merci D., Grohs C., Leveziel H., Characterization of five new bovine dinucleotide repeats, *Anim. Genet.* 23 (1992) 537–541.
- [51] Vaiman D., Mercier D., Moazami-Goudarzi K., Eggen A., Ciampolini R., Léplinge A., Velmala R., Kaukinen J., Varvio S.L., Martin P., Levéziel H., Guérin G., A set of 99 cattle microsatellites: characterization, synteny mapping, and polymorphism, *Mamm. Genome* 5 (1994) 288–297.

- [52] Weir B.S., *Genetic Data Analysis*, Sinauer Associates, Sunderland, Massachusetts, 1990.
- [53] Weitzman M., On diversity, *Quart. J. Econ.* 107 (1992) 363–405.
- [54] Weitzman M., What to preserve? An application of diversity theory to crane conservation, *Quart. J. Econ.* 108 (1993) 157–183.
- [55] Wright S., The interpretation of population structure by F-statistics with special regard to systems of mating, *Evolution* 19 (1965) 395–420.