



Polymorphism of egg white proteins egg weight and components weight in the Fayoumi hen

A. Obeidah, P. Mérat, Lise Durand

► To cite this version:

A. Obeidah, P. Mérat, Lise Durand. Polymorphism of egg white proteins egg weight and components weight in the Fayoumi hen. *Annales de génétique et de sélection animale*, 1977, 9 (3), pp.301-306. hal-00892886

HAL Id: hal-00892886

<https://hal.science/hal-00892886>

Submitted on 11 May 2020

HAL is a multi-disciplinary open access archive for the deposit and dissemination of scientific research documents, whether they are published or not. The documents may come from teaching and research institutions in France or abroad, or from public or private research centers.

L'archive ouverte pluridisciplinaire **HAL**, est destinée au dépôt et à la diffusion de documents scientifiques de niveau recherche, publiés ou non, émanant des établissements d'enseignement et de recherche français ou étrangers, des laboratoires publics ou privés.

Polymorphism of egg white proteins egg weight and components weight in the *Fayoumi* hen

A. OBEIDAH, P. MÉRAT et L. DURAND

Laboratoire de Génétique factorielle ()*
Centre national de Recherches zootechniques, I.N.R.A.,
78350 Jouy-en-Josas

Summary

The genetic variations in egg-white proteins were detected in *Fayoumi* eggs. G_2 locus proved to be the only polymorphic among four egg-white protein loci investigated. Two types were determined, G_2AB and G_2BB . The heterozygote proved to have heavier eggs and accordingly heavier egg components. The phenotypic correlation, with respect to the homozygote type, between albumen weight and yolk weight proved to be insignificant.

Introduction

Egg-white contains a number of proteins, which have been investigated by many workers for existence of genetic variants detected by electrophoresis. Polymorphism of some egg-white proteins has been investigated in relation to embryonic mortality (MORTON *et al.*, 1965). Other works have been done, recently, concerning possible association with the economical traits (BUVANENDRAN, V., 1967; TITOK, I. G., 1970; KOVALENKO *et al.*, 1972; LAZUK, MAKAROVA, 1976; STRATIL, VONDREJEC, 1973 and MARTINKEVITCH *et al.*, 1974). The first investigator (BUVANENDRAN, 1967) found an association between body weight, egg weight and ovalbumin; the AA genotypes were heavier and laid heavier eggs than the two other genotypes. On the other hand, for G_3 globulin, the heterozygotes laid more egg than either homozygote, but G_2 seemed to have no effect on the characters studied. He added, that selection on gene basis is not practical. MARTIN-

(*) This work had been done in collaboration between "Laboratoire de Génétique Factorielle CNRZ, Jouy-en-Josas, France and the Animal Breeding Department, Faculty of Agriculture, Cairo University, Egypt.

KEVITCH *et al.* (1974) found a significant effect of genotypes on egg production for G_2 locus.

This study had the purpose to determine the genetic variations in the egg-white proteins of *Fayoumi* eggs. Moreover, if polymorphisms in egg-white proteins would exist, it was thought of interest to know if this has some bearing on egg weight and weights of its components.

Material and methods

The eggs tested in this study were transported to France from Egypt; they came from the *Fayoumi* breeding stock of the Experimental Poultry Breeding Farm, Faculty of Agriculture, Cairo University. The flock was hatched in winter 1976. All birds were kept on floor under the same environmental conditions and fed the same rations at lib. The total number of individual hens used is 712; they are the progeny of 20 sires. One egg per hen was collected in January 1977. Each egg corresponding to each hen was broken and yolk was separated from albumen. Yolk and shell (with membrane) were weighed to the nearest mg. Meanwhile, a sample from egg-white had been taken from each egg. Albumen weight was obtained by difference between egg weight and both yolk and shell weight.

Electrophoretic analysis, using starch gel (LUSH, 1961; CROIZIER, 1969), was practiced, firstly, to detect ovalbumin variants, but all eggs tested proved to be homozygote to this locus (AA type). The same holds true for conalbumin and G_3 , which were of BB and AA types. The only polymorphism detected in this investigation was for G_2 .

The weights of eggs and egg components were compared on within sire and dam pairs according to the genotypes. An analysis of variance was made on this material with genotype (at G_2 locus) and sire as sources of variation.

Results and discussion

Two types were determined at locus G_2 as shown in Figure 1, BB and AB types. The number of BB hens was 580 vs 132 AB hens. No AA individuals were found. Gene frequency computed for A is 9.3 % and for B is 90.7 %. Comparing observed and expected numbers in the random mating hypothesis gives a significant χ^2 of 7.39 for 2 d.f. ($P < .025$). The absence of AA birds may suggest some disadvantage attached to this genotype.

The mean values, for egg weight, yolk weight, shell weight and albumen weight obtained for the homozygote (G_2 BB) are in grams 37.69, 12.55, 4.28 and 20.89 respectively and 40.27, 13.40, 4.63 and 22.24 respectively for the heterozygote (G_2 AB). The differences between the two genotypes are all in favor of AB: 2.55 g. for egg weight, 0.85 g. for yolk weight, 0.35 g. for shell weight and 1.35 g. for albumen weight. As egg weight is determined by its components weights, relatively, the largest difference is due to albumen weight. The differences between the two genotypes within each sire for the four characters confirm the overall genotype effect (Table 1). They are in the same direction with only two exceptions (slight difference in the reverse direction) for egg, yolk and albumen

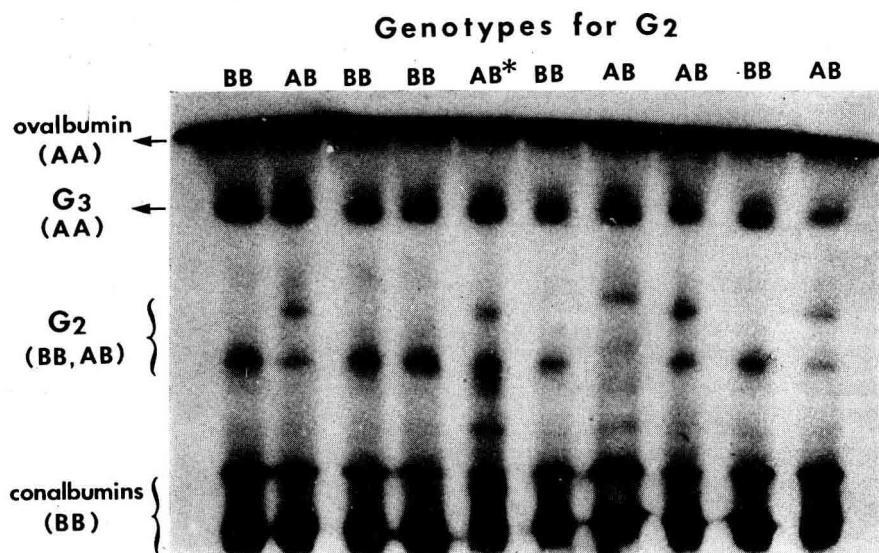


FIG. 1. — A Starch gel plate of Fayoumi egg albumen proteins. Electrophoretic analysis.

* (This sample is one of Jouy eggs for comparing to our eggs.)

Une plaque en gel d'amidon des protéines du blanc d'œuf de Fayoumi. Analyse électrophorétique.

weight and three for shell weight. The percentage of the four differences from the corresponding homozygotes weights, are: 6.8 per cent for egg weight, 6.8 per cent for yolk weight, 18.2 per cent for shell weight and 6.4 per cent for albumen weight; This may indicate the superiority of the heterozygote type. OBEIDAH and MOSTAGEER (unpublished data) obtained a genetic correlation of 0.8 between shell weight and shell thickness. The higher percentage for shell weight may be in favor of a higher shell thickness for the heterozygote. Such results on egg components do not seem to have been reported previously in the literature: MARTINKEVITCH *et al.* (1974) reported a significant effect of G₂ locus for egg production in white *Leghorn*. TITOK (1970) found that the homozygotes of G₃ and G₂ types were the best ones for both productivity and fertility in comparison with the two respective heterozygotes.

The analysis of variance for the four traits is shown in Table 2. There are no interactions between sires and genotypes for the four traits. The variation between the two genotypes proves to be highly significant in all cases. The variation between sires for shell weight is the only case which proved to be insignificant. Comparing the variances between sires and between genotypes, the first one is about one fifth of the second for egg weight, more than one fourth for yolk weight and albumen weight and about one tenth for shell weight. This indicates, that the variations in egg weight and components weights are due in large proportion to the genotypes, while the sire effect is relatively of less contribution. This is quite apparent in the case of shell weight. On the other hand, the variance attributable to this locus, approximately, is 1.032 for egg weight; as a fraction of the additive genetic variance, which is 2.32, it is 44.4 per cent. Thus selection for egg weight on basis of this gene is convenient or/and may be used in deciding the choice of lines and the mating systems.

TABLE I

Means of egg weight and components weight for the two Genotypes of G₂ with sires
Moyennes du poids de l'œuf et de ses composantes pour les deux génotypes de G₂ intra-pères

	Item	1 (*)	2	3	4	5	6	7	8	9	10	11	12	13	14	15	16	17	18	19	20
Egg weight g.																					
	BB	36.64	36.30	39.41	36.56	37.88	37.08	36.17	36.34	36.25	36.30	37.79	39.62	37.25	40.44	33.24	39.53	36.19	44.26	40.10	37.17
	AB	39.18	43.75	42.14	40.44	37.11	39.93	36.54	37.21	39.16	38.19	39.54	42.54	39.24	42.95	37.72	41.58	39.70	45.45	39.63	43.64
	BB	11.80	12.39	12.36	10.32	12.11	12.10	12.26	11.98	11.82	11.48	12.17	13.56	13.29	13.23	11.01	13.37	11.69	14.14	14.56	13.03
Yolk weight g.	AB	13.13	14.32	13.49	13.42	10.88	14.05	12.27	12.05	12.64	13.31	14.02	14.68	13.67	14.56	12.53	13.78	13.89	14.65	13.21	13.65
	BB	4.13	4.04	4.63	4.15	4.57	4.37	3.39	4.48	4.16	4.23	3.85	4.68	4.41	4.43	3.89	4.11	3.93	4.38	4.87	4.00
Shell weight g.	AB	4.37	5.00	5.06	4.56	4.26	4.25	4.22	4.49	4.57	4.43	4.48	4.94	4.51	4.50	4.06	4.44	4.83	5.46	4.54	5.59
	BB	20.71	19.87	22.23	22.07	21.20	20.60	19.53	19.88	20.26	20.55	21.77	21.38	19.53	22.79	18.35	22.05	20.45	23.75	20.67	20.14
Alb. weight g.	AB	21.67	24.43	23.58	22.56	22.03	21.50	20.60	20.68	21.94	20.45	21.11	22.92	21.06	23.87	21.13	23.37	20.99	25.22	21.88	24.40

(*) Sires number.

TABLE 2

Analysis of variance for egg weight and components weights.
Analyse de variance pour le poids de l'œuf et de ses composantes

Source of variation	d.f.	Egg weight	Yolk weight	Shell weight	Albumen weight
Between genotypes (G) . . .	1	247.3852 (**)	35.8062 (*)	4.4597 (**)	69.2951 (**)
Between sires (S)	19	49.6010 (**)	8.7084 (**)	0.4561	17.7339 (**)
Interaction G × S	19	7.7122	2.2517	0.4549	3.0185
Residual	218	10.0363	2.4672	0.2968	4.0185

(**) Significant at 1 p. 100 level.

(*) Significant at 5 p. 100 level.

The phenotypic correlations between the four characters, with respect to each genotype, are presented in Table 3. Correlations obtained for the homozygote type are of lower magnitudes than the figures obtained for the heterozygote. The most distinguishable figure is that between yolk weight and albumen weight which is 0.126 for the homozygote. This may add to the superiority of the heterozygote if selection is done on yolk /albumen ratio.

TABLE 3

*Correlations (1) between the four characters studied
 with respect to each genotype.*

Corrélations entre les quatre caractères étudiés à l'intérieur de chaque génotype

	Egg weight	Yolk weight	Shell weight	Albumen weight
Egg wt	0.778 (**)	0.668 (**)	0.870 (**)
Yolk wt	0.655 (**)	0.436 (**)	0.393 (**)
Shell wt	0.618 (**)	0.395 (**)	0.504 (**)
Albumen wt	0.817 (**)	0.126	0.376 (**)

(1) N = 129 for each genotype.

Above the diagonal is the heterozygote type and below is the homozygote.

(**) Significant at 1 p. 100 level.

(*) Significant at 5 p. 100 level.

Reçu pour publication en juillet 1977.

Résumé

Polymorphisme des protéines du blanc d'œuf, poids de l'œuf et de ses composantes chez la poule Fayoumi

Les variants génétiques des protéines de l'albumen ont été recherchés dans des œufs de *Fayoumi*. Le locus G_2 s'est révélé être le seul polymorphe parmi quatre loci étudiés. Deux types ont été identifiés, G_2AB et G_2BB . Les œufs des poules hétérozygotes sont plus lourds et leurs fractions composantes (blanc, jaune, coquille) le sont également. Parmi les individus homozygotes, la corrélation phénotypique entre le poids de l'albumen et le poids du jaune n'est pas significative.

References

- BUVANENDRAN, V., 1967. Egg-white polymorphisms and economic characters in domestic fowl. *Br. Poult. Sci.*, **8**, 119-129.
- CROIZIER G., 1969. *Étude du polymorphisme des protéines de l'albumen chez Gallus Gallus L.* Thèse, Faculté des Sciences de l'Université de Paris.
- KOVALENKO V. P., KROMIN V. S. and BENDARENKO U. V., 1972. Polymorphism of avian egg globulins with respect to genetic differentiation of strains and productivity level. *Genetika*, **8** (11), 52-62.
- LAZUK V. I., and MAKAROVA Z. N., 1976. (Biochemical polymorphism of egg-white in different lines of domestic fowl.) in *A.B.A.*, **44** (6), 330.
- LUSH I. E., 1961. Genetic polymorphism in the egg albumen proteins of the domestic fowl. *Nature*, Lond., **189**, 981-984.
- MARTINKEVICH, I. S., FOKINA Z. V., BELOV A. M., DRANITAA S. N., and BOGDAROV L. V., 1974. (Biochemical polymorphism of egg proteins in White *Leghorns* crosses 444 and Enia). in *A.B.A.*, **42** (9), 465.
- MORTON J. R., GILMOUR D. G., McDERMID E. H., and OGDEN A. L., 1965. Association of blood group and protein polymorphism with embryonic mortality in the chicken. *Genetics*, Princeton, **51**, 97-107.
- STRATIL A. and VON DREJC, J., 1973. The relationship between polymorphic proteins of hen's egg-white and egg production. *Zivocisna Vyroba*, **18**, 571-576.
- TITOK I. G., 1970. (Genetic polymorphism of globulins of egg protein and its connection with the productivity of *Leghorn White hen*.) *Tsitol. Gen.*, **4** (6), 491-494.