



**HAL**  
open science

# Inferences of evolutionary and ecological events that influenced the population structure of *Plebeia remota*, a stingless bee from Brazil

Flávio de Oliveira Francisco, Maria Cristina Arias

## ► To cite this version:

Flávio de Oliveira Francisco, Maria Cristina Arias. Inferences of evolutionary and ecological events that influenced the population structure of *Plebeia remota*, a stingless bee from Brazil. *Apidologie*, 2010, 41 (2), 10.1051/apido/2009079 . hal-00892051

**HAL Id: hal-00892051**

**<https://hal.science/hal-00892051>**

Submitted on 11 May 2020

**HAL** is a multi-disciplinary open access archive for the deposit and dissemination of scientific research documents, whether they are published or not. The documents may come from teaching and research institutions in France or abroad, or from public or private research centers.

L'archive ouverte pluridisciplinaire **HAL**, est destinée au dépôt et à la diffusion de documents scientifiques de niveau recherche, publiés ou non, émanant des établissements d'enseignement et de recherche français ou étrangers, des laboratoires publics ou privés.

# Inferences of evolutionary and ecological events that influenced the population structure of *Plebeia remota*, a stingless bee from Brazil\*

Flávio de Oliveira FRANCISCO, Maria Cristina ARIAS

Departamento de Genética e Biologia Evolutiva, Instituto de Biociências, Universidade de São Paulo, Rua do Matão 277, 05508-090, São Paulo, SP, Brazil

Received 6 March 2009 – Revised 17 September 2009 – Accepted 1 October 2009

**Abstract** – The present study characterised the population genetic structure of *Plebeia remota* through mitochondrial DNA (mtDNA) analysis and evaluated evolutionary and ecological processes that may have contributed to the species current genetic scenario. Seventy feral nests were sampled representing four geographic regions (Cunha, Curitiba, Prudentópolis, and Blumenau). Fifteen composite mtDNA haplotypes were determined and a high genetic structure was detected among all populations. The current population structure may be a result of queen philopatry and vegetation shifts caused by palaeoclimatic changes and uplift of Brazilian coastal ranges. Finally, this study strongly suggests a revision of the taxonomic status of *P. remota* from the Prudentópolis region.

stingless bees / mtDNA / rflp / Meliponini / population genetics

## 1. INTRODUCTION

The stingless bees (tribe Meliponini) exhibit a wide geographic distribution, as they are found in all tropical and subtropical regions on Earth (Wille, 1979; Silveira et al., 2002). The biogeographical history of this tribe is a controversial issue, and there is no consensus on whether the tribe originated from the Neotropics or Africa (see Kerr and Maule, 1964; Wille, 1979; and some considerations in Rasmussen and Cameron, 2007). The greatest abundance and diversity of stingless bees are found in the Neotropics (Wille, 1979), with approximately 30 genera and 300 species described (Camargo and Pedro, 1992). These data strongly argue in favour of the Neotropical origin (Camargo and Pedro, 1992).

Studies on the biology and ecology of Meliponini have proven their important role in the maintenance of several ecosystems. The pollination of many floral species from the Brazilian Atlantic forest is strictly dependent on these bees (Kerr et al., 1996). Recently, Bacelar-Lima et al. (2006) described the importance of stingless bees in scattering seeds of the Amazon forest.

The genus *Plebeia* Schwarz exhibits Neotropical distribution and, according to Michener (2000), is comprised by three subgenera: *Plebeia* Schwarz, *Scaura* Schwarz, and *Schwarziana* Moure. Bees from the subgenus *Plebeia* are morphologically characterised by small length (3–6 mm) and the presence of whitish or yellow stripes on the face and thorax (Michener, 2000). This subgenus ranges from Mexico to Argentina and is considered a post-Gondwanan group due to its Neotropical endemism. Approximately 30 species of *Plebeia* have been described (Michener, 2000). Brazil includes

Corresponding author: F. de O. Francisco, fofrancisco@usp.br, mcarias@ib.usp.br

\* Manuscript editor: Marina Meixner

Online material is available at:  
<http://www.apidologie.org>

16 recognised species and an unknown number of undescribed species (Silveira et al., 2002). South-eastern Brazil has been considered the geographical centre of origin for this subgenus (Camargo and Wittmann, 1989).

The species *Plebeia remota* (Holmberg, 1903) is widely distributed in southern Brazil, occurring in the states of Minas Gerais (MG), São Paulo (SP), Paraná (PR), Santa Catarina (SC), and Rio Grande do Sul (RS) (Fig. 1A) (Wittmann and Hoffmann, 1990; Silveira et al., 2002; Mouga, 2004). These bees nidify in tree cavities, and a colony can reach 5,000 individuals (van Benthem et al., 1995). Natural hives are very difficult to be located; the nest's entrance is very small and only permits the entrance or exit of one individual at a time. Furthermore, workers are very cryptic and any disturbance outside interrupts foraging activity. Ribeiro et al. (2003) reported differences in nest architecture and fall-winter reproductive diapause between *P. remota* colonies from two geographically distant populations in Brazil: Cunha (SP state) and Prudentópolis (PR state). Further, Patrício and Imperatriz-Fonseca (2004) found differences in the external morphology of queens' scutella and composition of Dufour glands secretions. Hilário (2005) detected differences in foragers' flight activity and nest temperature control. Recently, Francisco et al. (2008) also verified differences through mitochondrial DNA (mtDNA), patterns of wing venation, and cuticular hydrocarbons analyses between these two populations.

MtDNA is one of the most widely studied molecules for systematics, species characterisation, population structure, and phylogenetic analyses. Analysis by restriction fragment length polymorphism (RFLP) technique allows the investigation of this molecule as a whole, including both conserved and variable regions. Particularly in Meliponini, the mtDNA-RFLP approach has been tested and proved useful for the detection of inter-specific variation within the subgenus *Plebeia* (Francisco et al., 2001) and others (Weinlich et al., 2004; Brito and Arias, 2005; Arias et al., 2006).

To date, molecular genetic analysis of *P. remota* has been restricted to mtDNA-RFLP of only few samples (Francisco et al., 2008); therefore, the available literature for this species is predominantly non-genetic. In this investigation, mtDNA-RFLP analysis was utilised to characterise samples of *P. remota* collected within its endemic area, representing four distinct populations. Our investigation aimed to: (i) characterise the population structure of *P. remota* by mtDNA-RFLP analysis, (ii) determine the genetic and evolutionary status of each surveyed population, and (iii) confirm the isolation of the Prudentópolis population. Therefore, this study provides a better understanding of evolutionary and ecological processes that were responsible for the species current population genetic structure.

## 2. MATERIAL AND METHODS

### 2.1. Sampling

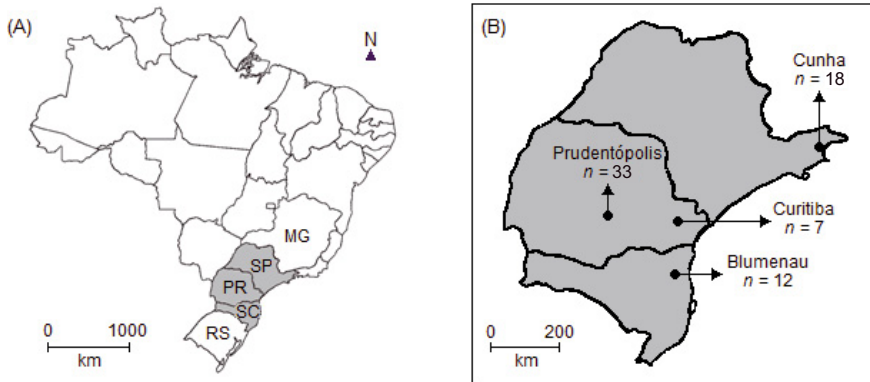
Adult workers were collected from 70 nests in four localities of Brazil (Fig. 1B): Cunha, SP ( $n = 18$ ); Prudentópolis, PR ( $n = 33$ ); Curitiba, PR ( $n = 7$ ); and Blumenau, SC ( $n = 12$ ). The samples were initially kept in liquid nitrogen and stored at  $-80^{\circ}\text{C}$ . Bees were checked for species identity by a taxonomist.

### 2.2. mtDNA analysis

Total DNA was isolated according to the protocol of Sheppard and McPheron (1991), with slight modifications as described in Francisco et al. (2001). The DNA was subjected to single and double digestion overnight with the following 15 restriction enzymes: *Bam*H I, *Bcl* I, *Bgl* II, *Cfo* I, *Cla* I, *Eco*R I, *Eco*R V, *Hae* III, *Hind* III, *Nde* I, *Pst* I, *Pvu* II, *Sca* I, *Xba* I, and *Xho* I. The RFLP patterns were verified via Southern blot analysis, as previously described (Francisco et al., 2001). The PCR-RFLP technique was utilised to identify restriction sites in close proximity. Methods used for PCR reactions, digestions, and visualisations are also described by Francisco et al. (2001).

### 2.3. Statistical analyses

REAP v4.0 package (McElroy et al., 1992) was used to calculate the genetic distance between



**Figure 1.** (A) Map of Brazil indicating the states of *Plebeia remota* occurrence. MG: Minas Gerais, SP: São Paulo, PR: Paraná, SC: Santa Catarina, RS: Rio Grande do Sul. (B) Collected sites and number of nests sampled.

haplotypes ( $d$ ), nucleotide ( $\pi$ ) and haplotype ( $h$ ) diversities within samples, and nucleotide divergence among populations. The Monte Carlo (Roff and Bentzen, 1989) test was used to determine genetic heterogeneity among populations. ARLEQUIN v3.11 (Excoffier et al., 2005) was used to detect population differentiation through the Markov chain method and exact test. AMOVA (Excoffier et al., 1992) was used for calculation of the intra- and inter-population diversity and  $\Phi_{ST}$  and  $F_{ST}$  values. Based on  $d$  values, unrooted minimum evolution (ME) trees (Rzhetsky and Nei, 1992) were estimated using the program MEGA4 (Tamura et al., 2007). *Plebeia saiqui* served as outgroup. Mantel tests (10 000 permutations) were performed by GENEPOP package v3.4 (Raymond and Rousset, 1995) to correlate genetic (nucleotide divergence and  $F_{ST}$ ) and geographical distances.

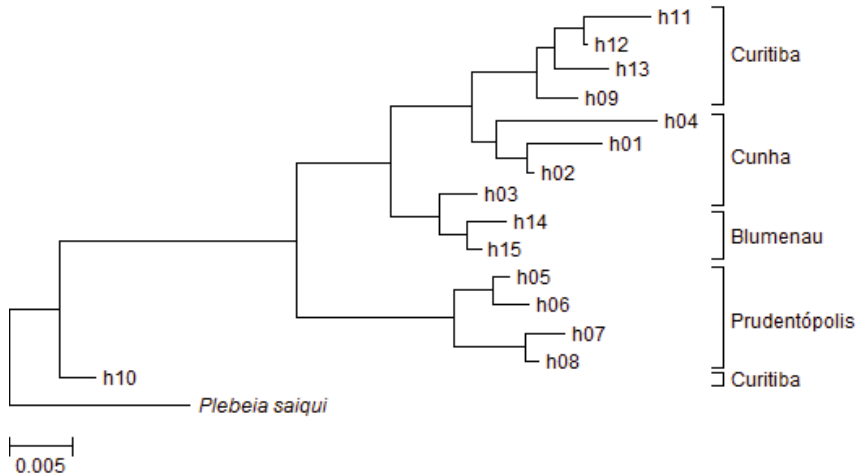
### 3. RESULTS

MtDNA from 70 nests was screened with 15 restriction endonucleases. Fragment size and number were calculated from Southern blot membranes, and the total length of mtDNA for all samples was estimated to be approximately 18 500 bp. Two restriction enzymes (*Cfo* I and *Pvu* II) did not cut the mtDNA for any sample. The remaining 13 enzymes generated a total of 27 different restriction sites, and 15 haplotypes were obtained (see figure in the electronic supplementary material). Most haplotypes were not shared

among populations (Tab. I). Only haplotypes h01 and h02 were both present in Cunha and Curitiba populations. The ME tree based on genetic distances between haplotypes (Fig. 2) defined four clusters, which were well related to the respective geographic origin: Prudentópolis, Blumenau, Curitiba, and Cunha. Notably, haplotype h10 (Curitiba) is genetically distant from all haplotypes, but closely related to the outgroup *P. saiqui*. Haplotype ( $h$ ) and nucleotide ( $\pi$ ) diversities within each population were relatively high, except in Prudentópolis (Tab. II). Samples from Prudentópolis and Curitiba presented the lowest and the highest  $\pi$  values of 0.2191 and 2.2383%, respectively.

Values of  $F_{ST}$  and nucleotide divergence between populations are shown in Table III. Cunha and Curitiba presented the lowest nucleotide divergence (0.0060), and in contrast, Cunha and Prudentópolis presented the highest (0.0386). High differentiation among the four populations (0.1659 to 0.7266) was observed according to  $F_{ST}$  values.

The Monte Carlo distribution indicated significant heterogeneity of haplotype frequencies ( $P < 0.0001$ ) among population pairs. Exact tests, which were also based on haplotype frequencies, exhibited differentiation among population pairs (all  $P < 0.0114$ ). The analysis of molecular variance (AMOVA) revealed significant genetic variation within and among populations (41.65% and 58.35%,



**Figure 2.** Minimum evolution tree of mitochondrial DNA haplotypes based on genetic distance. The species *Plebeia saiqui* was included as the outgroup.

respectively). The  $\Phi_{ST}$  value also revealed a highly significant population structure ( $\Phi_{ST} = 0.5835$ ;  $P < 0.0001$ ). Mantel's tests based on nucleotide divergence and  $F_{ST}$  values demonstrated that the genetic distances were not correlated with the geographical distances ( $P = 0.2942$  and  $P = 0.4184$ , respectively).

## 4. DISCUSSION

### 4.1. Causes of interpopulation mtDNA differentiation

The distribution of mtDNA haplotypes and statistical analyses demonstrated a clear isolation among the four populations, suggesting an absence of gene flow mediated by queens. This result can be explained in part by the swarming behaviour of stingless bees. The new nest is built only a few metres from the mother colony and keeps a high dependence on it until a virgin queen and a group of workers migrate to the new site (Michener, 1979; Engels and Imperatriz-Fonseca, 1990). Queen philopatric behaviour has been associated to population structure in other social insects (Ross, 2001).

Palaeoclimatic and palaeogeographic events should also be considered here since they affected drastically the landscape. It is well known that the climatic changes

in Pliocene and Pleistocene led to habitat fragmentation which in turn may have promoted speciation and extinction events, and organism diversity as an ultimate consequence (Potts and Behrensmeier, 1992). The current distribution of several organisms in Europe has been associated to Pleistocene climatic changes (Hewitt, 1999). South America was not subjected to severe glaciation, but the climate was strongly altered (Hewitt, 1996). Glaciations began approximately 2.5 million years (Myr) before present (BP) in the Late Pliocene (Hewitt, 1996, 1999) and were more intense during the Pleistocene, with cycles of 100 000 yr interrupted by short warm periods (Potts and Behrensmeier, 1992; Hewitt, 1996). Forests expanded during warm and moist periods and then contracted after the climate became cold and dry. Differentiation among *P. remota* populations may have occurred during forest contractions. The high rate of exclusive haplotypes and the high values of  $F_{ST}$  are indicative of an ancient isolation. Considering the rate of 2% divergence per 1 Myr for mtDNA coding sequences (De Salle et al., 1987), bees from Prudentópolis and Cunha can be inferred to be isolated for 1.9 Myr (Late Pliocene). The population from Prudentópolis seems to have been isolated from the other populations for approximately 1.5–1.4 Myr

**Table I.** Haplotype frequencies and distribution detected in four populations of *Plebeia remota*.

Haplotypes	Cunha	Prudentópolis	Curitiba	Blumenau
	(n = 18)	(n = 33)	(n = 7)	(n = 12)
h01	12	-	1	-
h02	4	-	1	-
h03	1	-	-	-
h04	1	-	-	-
h05	-	30	-	-
h06	-	1	-	-
h07	-	1	-	-
h08	-	1	-	-
h09	-	-	1	-
h10	-	-	1	-
h11	-	-	1	-
h12	-	-	1	-
h13	-	-	1	-
h14	-	-	-	4
h15	-	-	-	8

**Table II.** Haplotype ( $h$ ) and percentage nucleotide ( $\pi$ ) diversity within the populations of *Plebeia remota*.

Population	N. of haplotypes	$h \pm$ s.e.	$\pi \pm$ s.e. (%)
Cunha	4	0.5294 $\pm$ 0.1170	0.5807
Prudentópolis	4	0.1761 $\pm$ 0.0881	0.2191
Curitiba	7	1.0000 $\pm$ 0.0764	2.2383
Blumenau	2	0.4848 $\pm$ 0.1059	0.2390
Overall	4.25	0.5476 $\pm$ 0.0289	0.8193 $\pm$ 0.0023

**Table III.** Pairwise comparisons of nucleotide divergence (above diagonal) and  $F_{ST}$  estimates (below diagonal) between pairs of *Plebeia remota* populations.

	Cunha	Prudentópolis	Curitiba	Blumenau
Cunha	-	0.0386	0.0060	0.0184
Prudentópolis	0.6857*	-	0.0291	0.0287
Curitiba	0.1659 <sup>+</sup>	0.6001*	-	0.0169
Blumenau	0.4902*	0.7266*	0.2911 <sup>-</sup>	-

\* $P < 0.0001$ ; <sup>+</sup> $P = 0.0258 \pm 0.0028$ ; <sup>-</sup> $P = 0.0003 \pm 0.0003$

(Early Pleistocene). Conversely, populations from Cunha and Curitiba presented the most recent isolation of approximately 300 000 yr BP (Late Pleistocene), and the two haplotypes common to both populations (h01 and h02) can be remnants of the haplotype diversity before ancestral population split. Although inferences of evolutionary time based on molecular clocks should be used with caution (Pulquério and Nichols, 2007), other studies have successfully applied such estimates to understand bee population structure dynamics. For example, Franck et al. (2000) suggested that glaciation has isolated lineages of *A. mellifera* in Italian refuges at approximately 190 000 yr BP. Dick et al. (2004) estimated that the divergence time among cross-Andean Euglossini bees ranges from 0 to 1.42 Myr BP, indicating cross-Andean dispersal after the uplift of the Andes mountain range.

The uplift of coastal ranges (Serra do Mar) also exhibited a strong influence over the flora distribution in southern and southeastern Brazil and, consequently, might have isolated populations by habitat fragmentation (Lara and Patton, 2000). The uplift began in the Palaeocene, about 65 Myr BP (Petri and Fúlfaro, 1988) and lasted until the Pleistocene (Freitas, 1951). Ancient habitat fragmentation caused by climatic changes, uplift of coastal ranges, and also female philopatry may have been responsible for the isolation detected among *P. remota* populations.

#### 4.2. Causes of intrapopulation mtDNA diversity

Interestingly, the lowest mtDNA genetic diversity was found in the region with the largest sample size (Prudentópolis,  $n = 33$ ). Although four haplotypes were found in Prudentópolis, three were very rare, and each was found in only one nest. Haplotype h05 was the predominant form, being present in the remaining 30 nests. Moreover, the haplotypes found in Prudentópolis were highly similar as evidenced by the low  $\pi$  value, which indicates a shorter coalescence time and suggests a recent bottleneck or a small founder population. In a palynological study, Behling (1997)

demonstrated that the last cold and dry period in the Paraná highlands was approximately 12 480–9660  $^{14}\text{C}$  yr BP. At that time, vegetation was predominantly grassland and the forests were restricted to moist environments such as low-elevation valleys. As Prudentópolis is located in the Paraná highlands, the habitat restrictions abovementioned certainly affected this region and moreover may have confined bees to refuges. After this period, the climate gradually became moister, which allowed the expansion of forests and bee populations. Our data suggest that habitat re-colonisation was performed mainly by bees carrying haplotype h05, and the other three haplotypes may have appeared in the populations as a result of new mutations.

In contrast, samples from Curitiba presented higher haplotype and nucleotide diversities. Unexpectedly, these values were obtained from a low sample size (7 nests). These results indicate that Curitiba may represent an ancient population, and that this region is the possible centre of origin for the species. Similar results obtained for *A. mellifera* strongly support the northeastern Africa as the species origin centre, since three mitochondrial lineages exist simultaneously in that region (Franck et al., 2001). The high genetic variability verified in the population from Curitiba may be interpreted as a result from the climatic changes in the Late Pleistocene and Holocene, leading to the existence of several refuges in this geographic area. Indeed, Curitiba is in close proximity to Serra do Mar, a mountain chain that follows the Brazilian coast from Santa Catarina to Espírito Santo states. During the cold and dry period, the Atlantic forest lost continuity and was restricted to refuges with high humidity and substantial orographic rain (Ab'Saber, 1977, 1979) in the Atlantic Ocean slope. Therefore, multiple refuges would have allowed the evolution of multiple haplotypes.

Palynological evidence of contraction and expansion of forests in the Late Pleistocene and Holocene has also been found in regions near Cunha (Behling et al., 2007) and Blumenau (Behling and Negrelle, 2001), indicating that the intrapopulation diversity of *P. remota* in those regions may also be explained by these events.

## 5. CONCLUSIONS

This work demonstrated that the four studied populations exhibited exclusive genetic characteristics. The population from Prudentópolis is the most genetically distant and may have diverged from the ancestral populations in the Late Pliocene. Previous data had already reported unique ecologic, morphologic, and chemical characteristics of this population (Francisco et al., 2008). Such evidences support the hypothesis that it constitutes a new species. Indeed, when nests from Cunha and Prudentópolis were kept in a meliponary for five years, hybrids were not observed (molecular data not shown).

It is worth to note the genetic distance observed for haplotype h10 in relation to all samples. This haplotype was found in one nest from Curitiba. The addition of more molecular, morphological, and ecological data from a larger sample size from Curitiba region will certainly improve our understanding of the taxonomic status of this particular sample.

The study of additional bee species and also other organisms from the same geographic areas analyzed here will be very important to validate or not the hypotheses we have raised and certainly will increase our knowledge about the species distribution pattern and the possible association with historic and evolutionary events that occurred in those regions.

## ACKNOWLEDGEMENTS

We thank V.L. Imperatriz-Fonseca, M.F. Ribeiro, G. Moretto, L. Muegge, S. Gonzaga, and C. Chociai for samples, S. Coelho for technical support, G.A.R. Melo for morphological identification, R.M. Brito and the two anonymous reviewers for their comments and suggestions on an earlier version of this report. This work was supported by Fundação de Amparo à Pesquisa do Estado de São Paulo (FAPESP 99/11190-6).

**Caractérisation de la structure génétique actuelle des populations de *Plebeia remota*, abeille sans aiguillon du Brésil, en relation avec les processus de l'évolution et de l'écologie.**

**abeille sans aiguillon / ADN mitochondrial / Meliponini / génétique des populations / évolution**

**Zusammenfassung – Populationsgenetik von *Plebeia remota*, einer stachellosen Biene aus Brasilien, und Rückschlüsse auf evolutionäre und ökologische Ereignisse.** Neuere Studien haben gezeigt, dass innerhalb der Art *Plebeia remota* in ihrem Verbreitungsgebiet ausgeprägte Unterschiede in Verhalten, Morphometrie, chemischen Komponenten und genetischen Besonderheiten existieren. Die genetische Struktur von *P. remota* wurde mit Hilfe von mitochondrialer DNA (mtDNA) untersucht; evolutionäre und ökologische Prozesse, die zu diesem Szenarium geführt haben könnten wurden abgeleitet. Die Proben wurden in Cunha (São Paulo), Blumenau (Santa Catarina), sowie in Curitiba und Prudentópolis (Paraná) gesammelt (Abb. 1). Die Proben stammen von sieben Nestern und wurden mittels RFLP Analyse untersucht, wobei 15 Restriktionsenzyme eingesetzt wurden. Die Länge des mtDNA-Moleküls betrug in allen Proben 18 500 bp. Mit zwei der Restriktionsenzyme konnten in keiner der Proben eine Schnittstelle nachgewiesen werden. Mit den restlichen 13 Enzymen wurden insgesamt 27 verschiedene Schnittstellen gefunden; daraus ergaben sich 15 Haplotypen, deren Verteilung gut mit der geographischen Herkunft der Proben korrelierte (Abb. 2). Dabei trat der gleiche Haplotyp nur selten in mehreren Populationen auf (Tab. I). Die Diversität der Haplotypen (h) und der Nukleotide ( $\pi$ ) innerhalb jeder einzelnen Population waren vergleichsweise hoch, mit der Ausnahme von Prudentópolis (Tab. II). Die Werte für  $F_{ST}$  und die Nukleotid-Divergenz zwischen den Populationen sind in Tabelle III dargestellt. Die Analyse der mtDNA zeigte große genetische Variabilität und Isolation zwischen den Populationen, was sowohl durch die Philopatrie der Königinnen als auch mit Habitatfragmentation in früheren Zeiten durch Klimaänderungen oder die Auffaltung des Küstengebirges erklärt werden kann. Zusammen mit bereits veröffentlichten Daten unterstützen die Ergebnisse die Vermutung, dass diese spezifische Population als eine eigene Art angesehen werden sollte. Die Untersuchung zusätzlicher Bienenarten und anderer Organismen aus denselben geographischen Gebieten wird unser Wissen über die Verbreitungsmuster der Arten und die möglichen Zusammenhänge mit historischen und evolutionären Ereignissen in dieser Region vermehren.

**Stachellose Bienen / mtDNA / RFLP / Meliponini / Populationsgenetik**

## REFERENCES

- Ab'Saber A.N. (1977) Espaços ocupados pela expansão dos climas secos da América do Sul, por ocasião dos períodos glaciais quaternários, Paleoclimas 3, 1–19.
- Ab'Saber A.N. (1979) Os mecanismos da desintegração das paisagens tropicais no Pleistoceno:



- efeitos paleoclimáticos do período Würm-Winsconsin no Brasil, *Paleoclimas* 8, 1–11.
- Arias M.C., Brito R.M., Francisco F.O., Moretto G., Oliveira F.F., Silvestre D., Sheppard W.S. (2006) Molecular markers as a tool for population and evolutionary studies of stingless bees, *Apidologie* 37, 259–274.
- Bacelar-Lima C.G., Freire D.C.B., Coletto-Silva A., Costa K.B., Laray J.P.B., Vilas-Boas H.C., Carvalho-Zilse G.A. (2006) Melitocoria de *Zygia racemosa* (Ducke) Barneby and Grimes por *Melipona seminigra merrillae* Cockerell, 1919 y *Melipona compressipes manaosensis* Schwarz, 1932 (Hymenoptera, Meliponina) en la Amazonía Central, Brasil, *Acta Amaz.* 36, 343–348.
- Behling H. (1997) Late Quaternary vegetation, climate and fire history of the *Araucaria* forest and campos region from Serra Campos Gerais, Paraná State (South Brazil), *Rev. Palaeobot. Palyno.* 97, 109–121.
- Behling H., Negrelle R.R.B. (2001) Tropical rain forest and climate dynamics of the Atlantic lowland, Southern Brazil, during the Late Quaternary, *Quaternary Res.* 56, 383–389.
- Behling H., Dupont L., Safford H. D., Wefer G. (2007) Late Quaternary vegetation and climate dynamics in the Serra da Bocaina, southeastern Brazil, *Quatern. Int.* 161, 22–31.
- Brito R.M., Arias M.C. (2005) Mitochondrial DNA characterization of two *Parmona* species (Hymenoptera, Apidae, Meliponini) by PCR+RFLP and sequencing, *Apidologie* 36, 431–438.
- Camargo J.M.F., Pedro S.R.M. (1992) Systematics, phylogeny and biogeography of the Meliponinae (Hymenoptera, Apidae): a mini review, *Apidologie* 23, 509–522.
- Camargo J.M.F., Wittmann D. (1989) Nest architecture and distribution of the primitive stingless bee, *Mourella caerulea* (Hymenoptera, Apidae, Meliponinae): evidence for the origin of *Plebeia* (s. lat.) on the Gondwana Continent, *Stud. Neotrop. Fauna E.* 24, 213–229.
- De Salle R., Freedman T., Prager E.M., Wilson, A.C. (1987) Tempo and mode of sequence evolution in mitochondrial DNA of Hawaiian *Drosophila*, *J. Mol. Evol.* 26, 157–164.
- Dick C.W., Roubik D.W., Gruber K.F., Bermingham E. (2004) Long-distance gene flow and cross-Andean dispersal of lowland rainforest bees (Apidae: Euglossini) revealed by comparative mitochondrial DNA phylogeography, *Mol. Ecol.* 13, 3775–3785.
- Engels W., Imperatriz-Fonseca V.L. (1990) Caste development, reproductive strategies and control of fertility in honeybees and stingless bees, in: Engels W. (Ed.), *Social Insects: An Evolutionary Approach to Castes and Reproduction*, Springer-Verlag, Berlin, pp. 166–230.
- Excoffier L., Laval G., Schneider S. (2005) Arlequin ver. 3.0: An integrated software package for population genetics data analysis, *Evol. Bioinf. Online* 1, 47–50.
- Excoffier L., Smouse P.E., Quattro J.M. (1992) Analysis of molecular variance inferred from metric distances among DNA haplotypes: application to human mitochondrial DNA restriction data, *Genetics* 131, 479–491.
- Francisco F.O., Nunes-Silva P., Francoy T.M., Wittmann D., Imperatriz-Fonseca V.L., Arias M.C., Morgan E.D. (2008) Morphometrical, biochemical and molecular tools for accessing biodiversity. An example in *Plebeia remota*, *Insect. Soc.* 55, 231–237.
- Francisco F.O., Silvestre D., Arias M.C. (2001) Mitochondrial DNA characterization of five species of *Plebeia* (Apidae: Meliponini): RFLP and restriction maps, *Apidologie* 32, 323–332.
- Franck P., Garnery L., Celebrano G., Solignac M., Cornuet, J.-M. (2000) Hybrid origins of honeybees from Italy (*Apis mellifera ligustica*) and Sicily (*A. m. sicula*), *Mol. Ecol.* 9, 907–921.
- Franck P., Garnery L., Loiseau A., Oldroyd B.P., Hepburn H. R., Solignac M., Cornuet, J.-M. (2001) Genetic diversity of the honeybee in Africa: microsatellite and mitochondrial data, *Heredity* 86, 420–430.
- Freitas R.O. (1951) Ensaio sobre o relevo tectônico do Brasil, *Rev. Bras. Geogr.* 2, 171–222.
- Hewitt G.M. (1996) Some genetic consequences of ice ages, and their role in divergence and speciation, *Biol. J. Linn. Soc.* 58, 247–276.
- Hewitt G.M. (1999) Post-glacial re-colonization of European biota, *Biol. J. Linn. Soc.* 68, 87–112.
- Hilário S.D. (2005) Atividade de vôo e termorregulação de *Plebeia remota* (Holmberg, 1903) (Hymenoptera, Apidae, Meliponini), PhD thesis, Universidade de São Paulo.
- Kerr W.E., Maule V. (1964) Geographic distribution of stingless bees and its implications (Hymenoptera: Apidae), *J. New York Entomol. S.* 72, 2–18.
- Kerr W.E., Carvalho G.A., Nascimento V.A. (1996) *Abelha Urucu: Biologia, Manejo e Conservação*, Fundação Acangau, Belo Horizonte.
- Lara M.C., Patton J.L. (2000) Evolutionary diversification of spiny rats (genus *Trinomys*, Rodentia: Echimyidae) in the Atlantic Forest of Brazil, *Zool. J. Linn. Soc. Lond.* 130, 661–686.
- McElroy D., Moran P., Bermingham E., Kornfield I. (1992) REAP: an integrated environment for the manipulation and phylogenetic analysis of restriction data, *J. Hered.* 83, 157–158.
- Michener C.D. (1979) Biogeography of the bees, *Ann. Mo. Bot. Gard.* 66, 277–347.
- Michener C.D. (2000) *The Bees of the World*, The Johns Hopkins University Press, Baltimore.

- Mouga S.M.D.S. (2004) As comunidades de abelhas (Hymenoptera, Apoidea) em Mata Atlântica na região nordeste do Estado de Santa Catarina, Brasil, PhD thesis, Universidade de São Paulo.
- Patrício E.F.R.A., Imperatriz-Fonseca V.L. (2004) S.E.M. and GC-MS studies of *Plebeia remota* (Hymenoptera, Meliponini), Proceedings of the 8th IBRA International Conference on Tropical Bees and IV Encontro sobre Abelhas, p. 739.
- Petri S., Fúlvaro V.J. (1988) Geologia do Brasil (Fanerozóico), EDUSP, São Paulo.
- Potts R., Behrensmeyer A.K. (1992) Late Cenozoic terrestrial ecosystems, in: Behrensmeyer A.K., Damuth J.D., DiMichele W.A., Potts R. (Eds.), *Terrestrial Ecosystems Through Time: Evolutionary Paleocology of Terrestrial Plants and Animals*, Chicago University Press, Chicago, pp. 419–541.
- Pulquério M.J.F., Nichols R.A. (2007) Dates from the molecular clock: how wrong can we be? *Trends Ecol. Evol.* 22, 180–184.
- Rasmussen C., Cameron S.A. (2007) A molecular phylogeny of the Old World stingless bees (Hymenoptera: Apidae: Meliponini) and the non-monophyly of the large genus *Trigona*, *Syst. Entomol.* 32, 26–39.
- Raymond M., Rousset F. (1995) GENEPOP (version 1.2): population genetics software for exact tests and ecumenicism, *J. Hered.* 86, 248–249.
- Ribeiro M.F., Imperatriz-Fonseca V.L., Santos-Filho P.S. (2003) A interrupção da construção de células de cria e postura em *Plebeia remota* (Holmberg) (Hymenoptera, Apidae, Meliponini), in: Melo G.A.R., Alves-dos-Santos I. (Eds.), *Apoidea Neotropical: Homenagem aos 90 Anos de Jesus Santiago Moure*, Editora da UNESC, Criciúma, pp. 177–188.
- Roff D.A., Bentzen P. (1989) The statistical analysis of mitochondrial DNA polymorphisms:  $\chi^2$  and the problem of small samples, *Mol. Biol. Evol.* 6, 539–545.
- Ross K.G. (2001) Molecular ecology of social behaviour: analyses of breeding systems and genetic structure, *Mol. Ecol.* 10, 265–284.
- Rzhetsky A., Nei M. (1992) A simple method for estimating and testing minimum evolution trees, *Mol. Biol. Evol.* 9, 945–967.
- Sheppard W.S., McPherson B.A. (1991) Ribosomal DNA diversity in Apidae, in: Smith D.R. (Ed.), *Diversity in the Genus *Apis**, Westview Press, Boulder, pp. 89–102.
- Silveira F.A., Melo G.A.R., Almeida E.A.B. (2002) *Abelhas Brasileiras: Sistemática e Evolução*, F.A. Silveira, Belo Horizonte.
- Tamura K., Dudley J., Nei M., Kumar S. (2007) MEGA4: Molecular Evolutionary Genetics Analysis (MEGA) software version 4.0, *Mol. Biol. Evol.* 24, 1596–1599.
- van Benthem F.D.J., Imperatriz-Fonseca V.L., Velthuis, H.H.W. (1995) Biology of the stingless bee *Plebeia remota* (Holmberg): observations and evolutionary implications, *Insect. Soc.* 42, 71–87.
- Weinlich R., Francisco F.O., Arias M.C. (2004) Mitochondrial DNA restriction and genomic maps of seven species of *Melipona* (Apidae: Meliponini), *Apidologie* 35, 365–370.
- Wille A. (1979) Phylogeny and relationships among the genera and subgenera of the stingless bees (Meliponinae) of the world, *Rev. Biol. Trop.* 27, 241–277.
- Wittmann W., Hoffman M. (1990) Bees of Rio Grande do Sul, Southern Brazil, *Iheringia, Sér. Zool.* 70, 17–43.