



HAL
open science

Survival of *Euvarroa sinhai* Delfinado and Baker (Acari, Varroidae) on workers of *Apis cerana* Fabr, *Apis florea* Fabr and *Apis mellifera* L in cages

N Koeniger, G Koeniger, Li de Guzman, C Lekprayoon

► To cite this version:

N Koeniger, G Koeniger, Li de Guzman, C Lekprayoon. Survival of *Euvarroa sinhai* Delfinado and Baker (Acari, Varroidae) on workers of *Apis cerana* Fabr, *Apis florea* Fabr and *Apis mellifera* L in cages. *Apidologie*, 1993, 24 (4), pp.403-410. <hal-00891085>

HAL Id: hal-00891085

<https://hal.science/hal-00891085v1>

Submitted on 11 May 2020

HAL is a multi-disciplinary open access archive for the deposit and dissemination of scientific research documents, whether they are published or not. The documents may come from teaching and research institutions in France or abroad, or from public or private research centers.

L'archive ouverte pluridisciplinaire **HAL**, est destinée au dépôt et à la diffusion de documents scientifiques de niveau recherche, publiés ou non, émanant des établissements d'enseignement et de recherche français ou étrangers, des laboratoires publics ou privés.



HAL Authorization

Short communication

Survival of *Eugarroa sinhai* Delfinado and Baker (Acari, Varroidae) on workers of *Apis cerana* Fabr, *Apis florea* Fabr and *Apis mellifera* L in cages

N Koeniger¹, G Koeniger¹, LI De Guzman², C Lekprayoon³

¹ Institut für Bienenkunde (Polytechnische Gesellschaft), Fachbereich Biologie der JW Goethe-Universität Frankfurt am Main, Karl-von-Frisch-Weg 2, 61440 Oberursel 1, Germany;

² Dept of Entomology, Louisiana State University, Baton Rouge, LA 70803, USA;

³ Bee Biology Research Unit, Dept of Biology, Faculty of Science, Chulalongkorn University, Bangkok 10500, Thailand

(Received 4 December 1992; accepted 29 March 1993)

Summary — *Eugarroa sinhai* was collected from drone brood cells of *Apis florea* and introduced into cages with 5 worker bees of 3 honeybee species. After 24 h the survival rates of the mites were determined. The survival of *Eugarroa sinhai* on *Apis mellifera* was 53% compared to 70% on *Apis florea* and 8% on *Apis cerana*. Surviving *Eugarroa sinhai* were found under abdominal sternites of the bees. Experiments under more natural conditions are required to further explore the question of whether or not *Eugarroa sinhai* must be considered as a new candidate for parasitism on the Western honeybee *Apis mellifera*.

host-parasite relation / *Eugarroa sinhai* / *Apis mellifera* / *Apis cerana* / *Apis florea*

INTRODUCTION

Varroa jacobsoni was restricted originally to one host species, the Asian honeybee *Apis cerana*. After introduction of the allopatric honeybee species *Apis mellifera* into the habitat of the Asian honeybees, *Varroa jacobsoni* rapidly invaded the imported colonies. Subsequently, *Varroa jacobsoni* has spread worldwide and has caused heavy losses to apiculturists. It is currently the economically most serious parasite of *Apis mellifera*. *Eugarroa sinhai*

is naturally associated with *Apis florea* (Akranakul and Burgett, 1976; Koeniger *et al*, 1983; Aggarwal and Kapil, 1988). Kapil and Aggarwal (1987) reported the occurrence of this mite species in the hive debris of *Apis mellifera* in India. More recently, Rath and Delfinado-Baker (1990) found one *Eugarroa sinhai* in the hive debris of *Apis mellifera* in Thailand. Further, Mossadegh (1990a,b) experimentally infested brood cells of *Apis mellifera* with *Eugarroa sinhai* and reported successful reproduction on the brood of *Apis mellifera*. Whether or not adult worker bees of differ-

ent honeybee species can serve as host for *Eugarroa sinhai* is unknown.

MATERIALS AND METHODS

The experiments were conducted in Bangkok, Thailand in February 1992. Experimental bees were taken from brood combs of *Apis cerana*, *Apis mellifera* and from the brood area of *Apis florea* colonies. All colonies were kept at the campus of Chulalongkorn University. Hair curlers (diameter 1 cm, height 5 cm) made out of plastic mesh were used as test cages. The mesh (5 mm x 2 mm) were not passable by bees of any species, whereas *Eugarroa sinhai* could easily move through. The upper end of the tube was covered with a cap which contained sugar candy (mixture of honey and powdered sugar). Each cage was set up with 5 bees of the particular test species. The bottom of each cage was placed in a small Petri dish 3 cm in diameter: experimental bees were then inoculated by passing a mite resting on a fine brush through the mesh of the cage so that it came into contact with a bee. We introduced 5 mites per cage; 8 cages per honey bee species and 5 for control (no bees). All test cages together with the Petri dish were then placed on a tray lined with petroleum jelly and maintained at 28°C–31°C and 60–85% RH. After 24 h, the petroleum jelly was searched for mites. All test cages were transferred into a deep freezer (–18°C) for 30 min to kill all bees and mites. Bees were examined under a dissecting microscope to determine the fate of introduced mites. Mites found on the bees (after freezing) were considered to be alive at the end of the experiment.

Before the experiment all mites were examined and only intact specimens were used. After the experiment, mites were examined again for injuries.

RESULTS

Infestation rate

We inspected 12 combs of *Apis florea* (12 different colonies) and at least 200 capped drone brood cells per comb were opened

Table 1. Number of sealed *Apis florea* drone brood cells infested by *Eugarroa sinhai*.

Comb	Inspected cells	Infested cells	
1	458	245	(53%)
2	350	26	(7%)
3	800	2	(0.2%)
4	700	2	(0.3%)
5	280	2	(0.7%)
6	600	1	(0.2%)
7	200	0	
8	200	0	
9	200	0	
10	200	0	
11	200	0	
12	200	0	

(table 1). Only 6 combs were infested. With exception of 2 colonies the rate of *Eugarroa sinhai* infestation was less than 1%.

Behaviour of the bees towards inoculated Eugarroa sinhai

During mite introduction, we noticed differences among the bee species: on *Apis florea* we rarely saw any significant reaction towards *Eugarroa sinhai*. The bees did not exhibit grooming or any other kind of increase in activity after the mites climbed on them. Also the mites moved readily from the brush to the bees as soon as the brush came into first contact with a passing bee. However, at the very moment they came into contact with *Eugarroa sinhai*, *Apis cerana* workers showed an intensive grooming reaction. The mites were brushed off by the legs. In some cases we noted that mites were removed from other bees. We observed bees seizing mites with their mandibles. Several mites fell to the bottom of the cage (into the Petri dish) from where they climbed onto the cage and to the next bee. However, after 1 h,

the first immobile mites were observed and some were already on the petroleum jelly surrounding the cage.

In *Apis mellifera* we did not notice increased grooming after mite introduction. We had difficulties in transferring *Euvarroa sinhai* mites from the brush to *Apis mellifera* workers. The mites often remained on the brush and did not move onto the bee during the contacts. About half of the mites left the bees after we initially had put them on. Several mites were observed wandering on the cage during the experiment.

Survival of *Euvarroa sinhai*

All of the mites transferred into empty cages were recovered after 24 h on the petroleum jelly, where they became stuck and consequently died (table II).

In *Apis florea* we found 28 mites on the frozen bees. They were concealed between the sternites of the abdomen (fig 1).

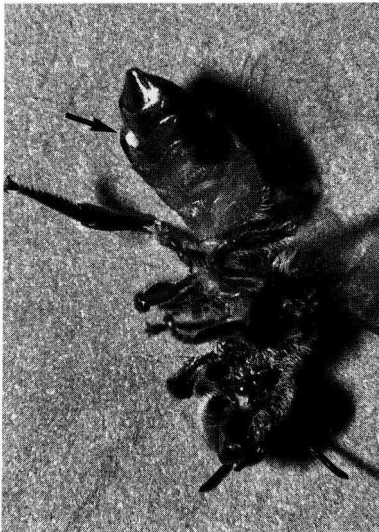


Fig 1. *Apis florea* worker carries *Euvarroa sinhai* under an abdominal sternite. The white spot is presumably faeces.

Twelve mites were collected dead from the petroleum jelly (table II).

In *Apis mellifera* 19 mites were recovered from the petroleum jelly and 21 mites were found on the bees (table II). Further, *Euvarroa sinhai* was detected under the sternites of the abdomen of the *Apis mellifera* worker bees (fig 2). In several cases we noticed white spots presumably of mite feces outside the mite's position (fig 3).

In *Apis cerana* cages only 3 *Euvarroa sinhai* were found on the bees. Thirty-seven mites were collected from the petroleum jelly. Thus this bee species successfully removed most of the mites and had significantly ($\chi^2 = 10.3$, $P < 0.001$) less surviving *Euvarroa sinhai* than the 2 other bee species (table II). Upon examination of the dead *Euvarroa sinhai* we found that 7 mites were mutilated (table II). One or more legs were amputated (fig 4). With *Apis florea* and *Apis mellifera* we did not detect any injuries of mites.

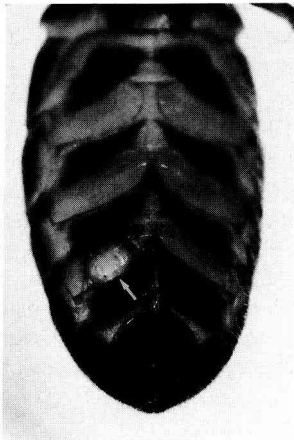
The 24-h survival rate of *Euvarroa sinhai* was best (70%) on its natural host, *Apis florea* (table II). The survival rate on *Apis mellifera* was $\approx 53\%$ and did not differ significantly ($\chi^2 = 2.6$, $P > 0.05$) from that of *Apis florea*. *Apis cerana* successfully eliminated most of the mites and had significantly ($P < 0.01$) less surviving *Euvarroa sinhai* than the other honeybee species.

DISCUSSION

Mossadegh (1991) inspected 31 *Apis florea* colonies in Iran and found *Euvarroa sinhai* in every colony. He examined 8 combs with drone brood cells and found a mean infestation rate of 8%. We checked 12 combs which contained capped drone brood cells. In 6 combs the drone brood was infested, but apart from 2 the percentage was less than 1%. In the other 6 combs, we inspected about 50% of the

Table II. Number of alive and dead *Eugarroa sinhai* 24 h after inoculation.

		Cage No								
		1	2	3	4	5	6	7	8	Sum
Control	Mites alive	0	0	0	0	0	—	—	—	0
	Mites dead	5	5	5	5	5	—	—	—	25
<i>A. florea</i>	Mites on bees	2	5	4	2	4	4	4	3	28
	Mites dead	3	0	1	3	1	1	1	2	12
<i>A. mellifera</i>	Mites on bees	1	4	3	2	3	3	2	3	21
	Mites dead	4	1	2	3	2	2	3	2	19
<i>A. cerana</i>	Mites on bees	0	0	0	0	0	2	0	1	3
	Mites dead	5	5	5	5	5	3	5	4	37
	(Mites injured)	(1)	(2)	(0)	(1)	(1)	(1)	(0)	(1)	(7)

**Fig 2.** *Eugarroa sinhai* pulled out slightly from its original resting position under the abdominal sternite of an *Apis mellifera* worker bee.**Fig 3.** A white faecal drop of *Eugarroa sinhai* has been deposited outside its resting position indicating successful feeding on *Apis mellifera*.

drone cells without finding a single mite. So the rate of *Eugarroa sinhai* infestation of *Apis florea* colonies which we inspected in Thailand was probably lower than that in Southern Iran.

The question of whether *Eugarroa sinhai* has the potential to successfully para-

sitize other honeybee species is of some interest. Naturally, *Eugarroa sinhai* is found in strict association with *Apis florea*. In many regions of Asia *Apis florea* lives sympatrically with the other Asian honeybee species. But there are no reports of *Eugarroa sinhai* from colonies of *Apis cerana*

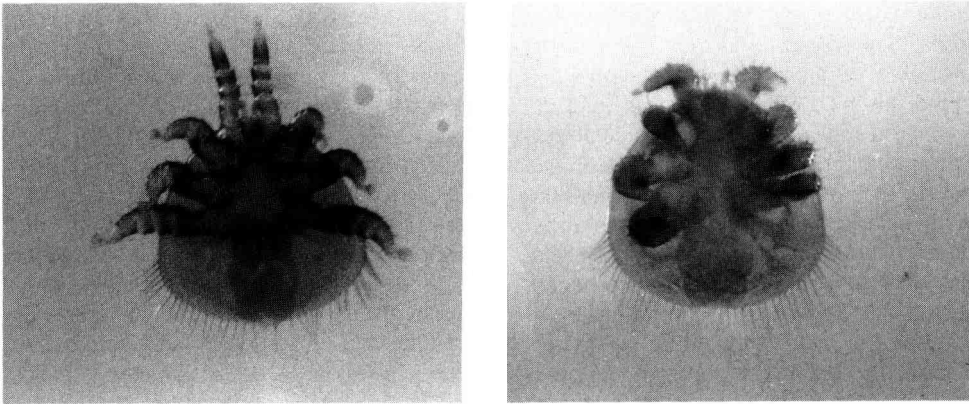


Fig 4. An injured *Euvarroa sinhai* (right) of *Apis cerana* and an intact mite (left).

Table III. Comparison of survival rates in cage experiments.

	A florea (%)	A mellifera (%)	A cerana (%)	Control (%)
Survival	70	53	8	0

and *Apis dorsata* (Koeniger and Koeniger, 1985). In Southern Iran the distributions of *Apis florea* and *Apis mellifera* overlap (Ruttner *et al*, 1985). However, Mossadegh (personal communication, 1992) did not find *Euvarroa sinhai* in *Apis mellifera* colonies.

The 2 reported findings of *Euvarroa sinhai* from colonies of *Apis mellifera* occurred in India (Kapil and Aggarwal, 1987) and northern Thailand (Rath and Delfinado-Baker, 1990). In both areas, *Apis mellifera* was successfully introduced. The dead mites were discovered in the hive debris of the *Apis mellifera* colonies.

Akratanakul (1976) and Mossadegh and Komeili (1986) pointed out the similarity

between the life cycles of *Euvarroa sinhai* and *Varroa jacobsoni*. Consequently Mossadegh (1990a,b) demonstrated that *Euvarroa sinhai* can develop on worker and drone brood of *Apis mellifera*. In our cage experiments these mites were exposed to worker bees (nurse bees sampled from the brood area) of different honeybee species. Surely the cage and other experimental circumstances also had a major impact on the survival of mites, since only 70% survived on *Apis florea*. Further, mites wandering out of the cage were caught and died in the petroleum jelly. According to some preliminary experiments and observations, these effects seem to increase with the duration of the cage test. Therefore we restricted the test to 24 h, which also had the advantage of avoiding bee mortality. Nevertheless we found clear differences among the honeybee species.

Although the mites were initially reluctant to move onto the bees, they were able to infest *Apis mellifera* workers and survive for 24 h. The fecal droppings indicated that *Euvarroa sinhai* actively fed on the *Apis mellifera* workers. The success rate of mites was not significantly lower than on

workers of their natural host species *Apis florea*. Since *Apis florea* was the smallest and *Apis mellifera* the largest honeybee tested, the size or the height of bees did not play a major role in mite survival, *Eugarroa sinhai* can feed on adults and also can develop on brood of *Apis mellifera* under special conditions. Experiments under more natural conditions (in small hives, etc) are therefore required and are necessary to further explore the question of whether *Eugarroa sinhai* must be considered as a potential new candidate for parasitism on the Western honeybee *Apis mellifera*. *Apis cerana* was most successful in the removal of *Eugarroa sinhai*. Peng *et al* (1987) obtained similar results when they exposed *Apis cerana* to *Varroa jacobsoni*. Apparently grooming behaviour is effective against both species of mites.

Résumé — Survie d'*Eugarroa sinhai* Delfinado et Baker (Acari, Varroidae) sur les ouvrières d'*Apis cerana* Fabr, *Apis florea* Fabr et *Apis mellifera* L lors d'expériences en cagettes. Dans la nature, *Eugarroa sinhai* n'est associé qu'à l'espèce hôte *Apis florea* (Akkratanakul et Burgett, 1976; Koeniger *et al*, 1983; Aggarwal et Kapil, 1988). Kapil et Aggarwal (1987) ont pourtant rapporté la présence de cet acarien dans les débris des colonies d'*A mellifera* élevées en Inde. Plus récemment, Rath et Delfinado-Baker (1990) ont trouvé une femelle d'*Eugarroa sinhai* dans les débris d'*A mellifera* en Thaïlande. Mossadegh (1990a et b) a infesté expérimentalement des cellules de couvain d'*A mellifera* avec *Eugarroa sinhai* et observé que l'acarien avait réussi à s'y reproduire. Ce travail cherche à répondre à la question : les ouvrières des diverses espèces d'*Apis* peuvent-elles servir d'hôte à *Eugarroa sinhai*? Des abeilles ont été prélevées sur les zones de couvain de colonies d'abeilles des 3 espèces, *cerana*, *mellifera*

et *florea*, élevées sur le campus de l'université de Chulalongkorn. Des bigoudis (diamètre 1 cm, hauteur 5 cm) en grillage en plastique ont été utilisés comme cagettes de test. Chaque cagette a été pourvue avec 5 abeilles de l'espèce testée. On a ensuite infesté les abeilles en faisant passer à travers le grillage de la cagette un acarien posé sur un pinceau fin, de façon à ce qu'il vienne en contact avec une abeille. Nous avons introduit 5 acariens par cagette à raison de 8 cagettes par espèce d'abeilles et de 5 cagettes témoin (pas d'abeilles). Les acariens transférés dans les cagettes vides (témoins) ont tous été retrouvés 24 h plus tard. Ils étaient collés sur la vaseline qui enduit le support autour des cagettes et étaient donc morts (tableau II). Dans les cagettes avec *A florea*, nous avons trouvé sur les abeilles 28 acariens, qui étaient cachés entre les sternites de l'abdomen (fig 1). Douze acariens ont été retrouvés morts (tableau II). Dans les cagettes avec *A mellifera*, 19 avariens ont été retrouvés dans la vaseline et 21 sur les abeilles, situés sous les sternites de l'abdomen des ouvrières (tableau II, fig 2). À plusieurs reprises, nous avons remarqué des points blancs, vraisemblablement des fécès d'acariens (fig 3). Dans les cagettes avec *A cerana*, seuls 3 acariens ont été trouvés sur les abeilles, mais 37 dans la vaseline. Cette espèce parvient donc à se débarrasser de la plupart des acariens et a un nombre significativement moindre ($\chi^2 = 10,3$, $P < 0,001$) d'acariens survivants que les 2 autres espèces (tableau II). À l'examen des *Eugarroa sinhai* morts, nous avons trouvé 7 acariens mutilés (tableau II) avec une (fig 4) ou plusieurs pattes amputées. Ce phénomène n'a pas été observé avec *A florea*, ni avec *A mellifera*.

Mossadegh (1990a et b) a montré qu'*Eugarroa sinhai* pouvait se reproduire et se développer sur du couvain d'ouvrières et de mâles d'*A mellifera*. Dans nos expériences en cagettes, cet acarien a été ca-

pable d'infester des ouvrières d'*A mellifera* et de survivre pendant 24 h. Le taux de réussite a été un peu plus faible que sur les ouvrières de son hôte naturel *A florea*. Les gouttelettes fécales indiquent qu'*Eugarroa sinhai* s'est nourri activement sur les ouvrières d'*A mellifera*. Des expériences dans des conditions plus naturelles (dans des ruchettes, etc) sont nécessaires et conseillées pour élucider la question de savoir dans quelle mesure *Eugarroa sinhai*, en tant que «nouveau» parasite, représente un danger potentiel pour l'abeille occidentale *A mellifera*.

***Eugarroa sinhai* / *Apis mellifera* / *Apis cerana* / *Apis florea* / relation hôte-parasite**

Zusammenfassung — Käfigversuche zur Überlebensrate von *Eugarroa sinhai* Delfinado und Baker auf Arbeiterinnen von *Apis cerana*, *Apis florea* und *Apis mellifera*. *Eugarroa sinhai* ist natürlicherweise auf die Wirtsart *Apis florea* beschränkt (Akranakul und Burgett, 1976; Koeniger *et al*, 1983; Aggarwal und Kapil, 1988). Kapil und Aggarwal (1987) jedoch berichteten über das Vorkommen dieser Milbenart im Gemüll von in Indien gehaltenen *Apis mellifera* Bienenvölkern. Kürzlich fanden auch Rath und Delfinado-Baker (1990) eine *Eugarroa sinhai* bei *Apis mellifera* in Thailand.

Mossadegh (1990a,b) konnte experimentell Brutzellen von *Apis mellifera* mit *Eugarroa sinhai* impfen und erfolgreiche Reproduktion beobachten. Ob auch Arbeiterinnen anderer Honigbienenarten als Wirt für *Eugarroa sinhai* in Frage kommen, soll mit dieser Arbeit geklärt werden.

Die Versuchsbienen wurden aus dem Brutbereich von Bienenvölkern der Arten *Apis cerana*, *Apis mellifera* und *Apis florea* entnommen, die auf dem Campus der Chulalongkorn University in Bangkok ge-

halten wurden. Lockenwickler (Durchmesser 1 cm, Höhe 5 cm) aus Plastikgewebe wurden als Testkäfige benutzt. In jedem Käfig waren fünf Bienen, die mit fünf *Eugarroa sinhai* infiziert wurden. Dazu wurden die Milben mit einem Pinsel aufgenommen und durch das Gitter des Käfigs mit den Bienen in Kontakt gebracht. Wir haben acht Käfige pro Bienenart und fünf leere Käfige als Kontrolle eingesetzt.

Die Milben verließen die leeren Käfige und wurden vollständig und tot auf der mit Vaseline bestrichenen Unterlage gefunden, die jeden Käfig lückenlos umgab (Tabelle II).

Bei *Apis florea* fanden wir 28 Milben auf den Bienen, wobei die Milben zwischen den Sterniten des Abdomens steckten (Abb 1). 12 *Eugarroa sinhai* waren tot (Tabelle II).

Bei *Apis mellifera* wurden 19 Milben tot auf der Vaseline gefunden und 21 auf den Bienen (Tabelle II, Abb 2). Bei mehreren Milben wurden weiße Exkrememente bemerkt, die auf eine aktive Nahrungsaufnahme der *Eugarroa sinhai* an der Arbeiterin von *Apis mellifera* schließen lassen (Abb 3).

Bei *Apis cerana* wurden nur drei Milben auf den Bienen gefunden, die anderen 37 *Eugarroa sinhai* lagen tot auf der Vaseline. Damit waren bei dieser Bienenart signifikant ($\chi^2 = 10.3$, $P < 0.001$) weniger überlebende Milben vorhanden als bei den beiden anderen Bienenarten (Tabelle II). Weiter wurden bei *Apis cerana* verletzte Milben gefunden (Abb 4).

Mossadegh (1990a,b) hat nachgewiesen, daß *Eugarroa sinhai* erfolgreich auf Brut von *Apis mellifera* reproduzieren kann. In unseren Käfigversuchen waren diese Milben in der Lage, Arbeiterinnen von *Apis mellifera* zu befallen und für 24 Stunden zu überleben. Dabei war die Überlebensrate auf *Apis mellifera* nur wenig geringer als auf dem natürlichen

Wirt *Apis florea*. Weiter deuten die abgesetzten Kottropfen auf eine erfolgreiche Nahrungsaufnahme von *Euvarroa sinhai* auf den Arbeiterinnen von *Apis mellifera* hin. Weitere Versuche zur Klärung der Frage, inwieweit *Euvarroa sinhai* als «neuer» Parasit eine mögliche Gefahr für *Apis mellifera* darstellt, sind empfehlenswert und notwendig.

***Euvarroa sinhai* / *Apis mellifera* / *Apis cerana* / *Apis florea* / Parasit-Wirt Beziehung**

REFERENCES

- Aggarwal K, Kapil RP (1988) Observations on the effect of queen cell construction on *Euvarroa sinhai* infestation in drone brood of *Apis florea*. In: *Africanized Honey Bees and Bee Mites* (Needham GR, Page RE, Delfinado-Baker M, Bowman CE, eds) Ellis Horwood Ser Entomology and Acarology, John Wiley and Sons, NY, 404-408
- Akratanakul P (1976) Biology and systematics of bee mites of the family Varroidae. MS thesis, Oregon State University, Corvallis, OR, 64 pp
- Akratanakul P, Burgett M (1976) *Euvarroa sinhai* Delfinado and Baker (Acarina: Mesostigmata): a parasitic mite of *Apis florea*. *J Apic Res* 15, 11-13
- Kapil RP, Aggarwal K (1987) *Euvarroa sinhai* found in *Apis mellifera* hive debris. *Bee World* 68 (4), 189
- Koeniger N, Koeniger G (1985) Change of host by parasitic mites in Asia after a new honeybee species is introduced. In: *Proc 3rd Int Conf Apic Trop Climates*. Nairobi, 160-162
- Koeniger N, Koeniger G, Delfinado-Baker M (1983) Observation on mites of the Asian honeybee species (*Apis cerana*, *Apis dorsata*, *Apis florea*). *Apidologie* 14 (3), 197-204
- Mossadegh MS (1990a) Development of *Euvarroa sinhai* (Acarina: Mesostigmata), a parasitic mite of *Apis florea*, on *Apis mellifera* worker brood. *Exp Appl Acarol* 9, 73-78
- Mossadegh MS (1990b) *In vitro* observations on ontogenesis of the mite, *Euvarroa sinhai* Delfinado and Baker (Acari, Varroidae), in drone brood cells of the honeybee, *Apis mellifera* L. *J Apic Res* 29, 230-232
- Mossadegh MS (1991) Geographical distribution, levels of infestation and population density of the mite *Euvarroa sinhai* Delfinado and Baker (Acarina: Mesostigmata) in *Apis florea* colonies in Iran. *Apidologie* 22 (2), 127-134
- Mossadegh MS, Komeili BA (1986) *Euvarroa sinhai* Delfinado and Baker (Acarina: Mesostigmata): a parasitic mite on *Apis florea* F in Iran. *Am Bee J* 126 (10), 684-685
- Peng C, Fang Y, Xu S, Ge L (1987) The resistance mechanism of *Apis cerana* against the ectoparasitic mite *Varroa jacobsoni*. *J Invertebr Pathol* 49, 54-60
- Rath W, Delfinado-Baker M (1990) Analysis of *Tropilaelaps clareae* populations from the debris of *Apis dorsata* and *Apis mellifera* in Thailand. In: *Proc Int Symp Recent Research on Bee Pathology* (Pitter W, ed) Ghent, 86-89
- Ruttner F, Pourasghar D, Kauhausen D (1985) Die Honigbienen des Iran. II. *Apis mellifera* meda Skorikow, die Persische Biene. *Apidologie* 16, 214-264