



**HAL**  
open science

## **Esterase-6 locus, a new enzyme polymorphism in *Apis mellifera***

A Biasiolo, A Comparini

► **To cite this version:**

A Biasiolo, A Comparini. Esterase-6 locus, a new enzyme polymorphism in *Apis mellifera*. *Apidologie*, 1990, 21 (2), pp.123-126. <hal-00890818>

**HAL Id: hal-00890818**

**<https://hal.science/hal-00890818v1>**

Submitted on 11 May 2020

**HAL** is a multi-disciplinary open access archive for the deposit and dissemination of scientific research documents, whether they are published or not. The documents may come from teaching and research institutions in France or abroad, or from public or private research centers.

L'archive ouverte pluridisciplinaire **HAL**, est destinée au dépôt et à la diffusion de documents scientifiques de niveau recherche, publiés ou non, émanant des établissements d'enseignement et de recherche français ou étrangers, des laboratoires publics ou privés.



HAL Authorization

## Esterase-6 locus, a new enzyme polymorphism in *Apis mellifera*

A Biasiolo \*, A Comparini

Istituto di Difesa delle Piante dell'Università, p.le M Kolbe n 4, 33100 Udine, Italy

(Received 10 November 1988; accepted 15 January 1990)

**Summary** — A new polymorphic enzyme locus, esterase-6, has been resolved by electrophoresis in *Apis mellifera*. Samples from Bologna (Emilia, Italy), representative of *A m ligustica*, and from North-East Friuli (Italy), regarded as hybrids between *A m ligustica* and *A m carnica*, were analyzed. A preliminary population survey shows this locus to be highly variable.

*Apis mellifera* / enzyme polymorphism / esterase-6

### INTRODUCTION

Electrophoretic investigations on gene-enzyme systems have shown a very low level of allozyme polymorphism in honey bee populations, possibly related to their haplodiploid condition and/or to eusociality (Sylvester, 1986).

In European populations of *Apis mellifera*, only 2 loci (malate dehydrogenase-1 and esterase) have shown fairly high variability to-date, and have been used for biochemical-genetic characterization of different races (Badino *et al*, 1983, 1984, 1985) and for studying their hybridization patterns (Badino *et al*, 1982; Marletto *et al*, 1984; Sheppard and McPheron, 1986).

The discovery of other highly variable loci would be very useful for improved genetic characterization of different races or populations of *A mellifera*.

Bitondi and Mestriner (1983) detected, by electrophoresis, 6 esterase loci in *A mellifera*; some of them showed a clear allozyme variability. Esterase-3 (Est-3) was used for some of the population genetic research cited above. The more cathodic esterase (Est-6) was perceived to be variable, but allozyme bands were not sufficiently differentiated for reliable genotype classification.

In the course of studies designed to identify markers for genetic characterization of *A mellifera* from Friuli, regarded as

---

\* Correspondence and reprints

a zone of hybridization between *A mellifera ligustica* and *A mellifera carnica* (Bolchi Serini *et al*, 1982; Ruttner, 1988), we obtained a reliable electrophoretic separation of Est-6 allozyme bands. A preliminary population survey was carried out in samples of *A mellifera* from Friuli and, for comparison, in a sample of *A m ligustica*. The data show that Est-6 locus is a potential new marker for genetic population studies in *A mellifera*.

## MATERIALS AND METHODS

Adult workers of *A mellifera* were sampled, in late summer 1987, from 2 apiaries near Tarvisio (North-East Friuli, Italy) and 1 near Bologna (Emilia, Italy). The latter were supplied by the Istituto Nazionale di Apicoltura, Bologna, as representative of *A m ligustica*. For each apiary, workers were captured near the entrance of several hives. The samples were stored at  $-40^{\circ}\text{C}$  until needed. Five individuals from every hive were used for electrophoresis.

Thorax-head sections of individual bees were homogenized in 0.15 ml buffer ( $0.2\text{ mol}\cdot\text{l}^{-1}$  Tris-HCl, pH 8;  $0.25\text{ mmol}\cdot\text{l}^{-1}$  2-mercaptoethanol;  $1\text{ mmol}\cdot\text{l}^{-1}$  EDTA). Electrophoresis was conducted on the supernatants after homogenate centrifugation. Horizontal electrophoresis was performed in 11.5% starch gels using, as electrode buffer,  $0.18\text{ mol}\cdot\text{l}^{-1}$  Tris-citrate, pH 7.0, diluted 1:15 in the gel. Electrophoresis was carried out at 250 V and  $5^{\circ}\text{C}$  for 5 h.

The best staining method for Est-6 was the following: the gel slices were immersed in the substrate solution (1 ml of 0.5%  $\alpha$ -naphthylbutyrate in acetone added to 50 ml of  $0.05\text{ mol}\cdot\text{l}^{-1}$  Tris-HCl, pH 7.2); after 1 h of incubation at  $38^{\circ}\text{C}$ , the substrate solution was removed and replaced with the staining solution (50 mg of Fast Blue BB salt in 50 ml of  $0.05\text{ mol}\cdot\text{l}^{-1}$  Tris-HCl, pH 7.2). Est-6 allozyme bands were clearly resolved after 30 min at  $38^{\circ}\text{C}$ . Best results were obtained by staining the upper gel slice.

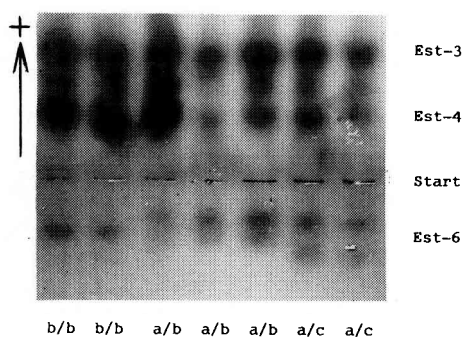
## RESULTS AND DISCUSSION

In *Apis mellifera*, the esterase electrophoretic pattern is composed of 6 different regions, which have been attributed to the activity of 6 different loci (Bitondi and Mestriner, 1983). Est-6, the most cathodic, exhibited 3 co-dominant alleles in our samples. This enzyme is a monomer, based on heterozygote banding patterns (fig 1).

The Est-6 genotype distribution of the studied populations of *A mellifera* well fitted the Hardy-Weinberg expectations, supporting our genetic interpretation for this polymorphism. The allele frequencies are reported in table I. Comparison of allele distribution by contingency tables have shown significant differences among the 3 samples, whether considered together or 2 at a time.

**Table I.** Est-6 allele frequencies and heterozygosity values observed (expected) in the analyzed samples of *Apis mellifera*. H = heterozygosity; N = number of workers analyzed.

Apiary localities: alleles	Camporosso	S Leopoldo (Friuli samples)	Bologna
a	0.07	0.28	0.03
b	0.74	0.70	0.95
c	0.19	0.02	0.02
N	50	50	75
H	0.42 (0.41)	0.36 (0.43)	0.11 (0.10)



**Fig 1.** Photograph of some Est-6 electrophoretic patterns and corresponding genotypes, observed in workers of *Apis mellifera*. Under the staining conditions, overstained bands corresponding to Est-3 and Est-4 loci (Bitondi and Mestriner, 1983) also appear.

The 2 Friuli samples are clearly more variable at Est-6 than the Bologna sample (heterozygosity about 0.4 and 0.1, respectively). This agrees with the view that Friuli populations of *A mellifera* might represent hybridization between *A m carnica* and *A m ligustica* (Bolchi Serini *et al*, 1982; Ruttner, 1988).

The Est-6 polymorphism may aid in the better characterization of different races of *A mellifera*, particularly *A m carnica* and *A m ligustica*. This possibility should be ascertained by extensive studies of Est-6 variability in *A m carnica* and *A m ligustica* populations from areas of endemism.

## ACKNOWLEDGMENTS

We thank the Istituto Nazionale di Apicoltura (Bologna) and Mr M D'Agaro (Istituto di Difesa delle Piante, Udine) for supplying the bee material.

**Résumé — Le locus esterase-6, nouveau cas de polymorphisme enzymati-**

**que chez *Apis mellifera*.** Les populations de l'abeille domestique ont montré jusqu'à présent un très faible degré de polymorphisme allozymique. Un nouveau système enzymatique polymorphique, le locus esterase-6 (Est-6), a été mis en évidence chez *Apis mellifera* par électrophorèse.

Les analyses ont porté sur 15 ruches situées à Bologna (Emilie, Italie), représentatives de la race *Apis mellifera ligustica* et 20 ruches du nord-est du Frioul (Italie), considérées comme des hybrides de *A m ligustica* et *A m carnica*. Cinq ouvrières adultes ont été prélevées dans chaque ruche. L'électrophorèse horizontale sur gel d'amidon a été réalisée sur des coupes individuelles tête-thorax. Le tampon électrode était constitué de tris-citrate à 0,18 mol·l<sup>-1</sup>, pH 7,0 dilué à 1/15 dans le gel. Les bandes d'Est-6 ont été mieux révélées en utilisant l' $\alpha$ -naphtylbutyrate comme substrat dans le bain de coloration.

L'Est-6 a présenté dans nos échantillons 3 allèles codominants (fig 1). Les 2 échantillons du Frioul se différencient nettement de celui de Bologna par un taux plus élevé de variabilité de l'Est-6 (tableau I). Le polymorphisme du locus de l'Est-6 peut contribuer à une meilleure caractérisation des différentes races d'*Apis mellifera*.

## *Apis mellifera* / polymorphisme enzymatique / esterase-6

**Zusammenfassung — Der Esterase-6 Locus, ein neuer Enzym polymorphismus bei *Apis mellifera*.** Die Populationen der Honigbiene haben bisher einen sehr niedrigen Grad von Allozym-Polymorphismen gezeigt. Ein neues polymorphes Gen-Enzym-System, der Esterase-6 Locus (Est-6) wurde durch Elektrophorese bei *Apis mellifera* eindeutig nachgewiesen.

Es wurden 15 Völker aus Bologna (Emilia, Italien), repräsentativ für *Apis*

*mellifera ligustica*, und zwanzig Völker aus Nordost-Friaul (Italien), die als Hybriden zwischen *A m ligustica* und *A m carnica* betrachtet werden können, analysiert. Von jedem Volk wurden fünf erwachsene Arbeitsbienen benutzt. An individuellen Thorax-Kopf-Schnitten wurde eine horizontale Stärkegel-Elektrophorese durchgeführt. Der Elektrodenpuffer war 0,18 M Tris-Citrat, pH 7,0, in dem Gel zu 1:15 verdünnt. Die Est-6-Banden wurden am deutlichsten dargestellt, wenn man  $\alpha$ -Naphthyl-Butyrat als Substrat in der Färbelösung benutzte.

Est-6 zeigte in unseren Proben drei codominante Allele (Abb 1). Die zwei Proben aus Friaul sind von der Probe aus Bologna deutlich durch den höheren Grad der Variabilität von Est-6 unterschieden (Tabelle I). Der Polymorphismus im Est-6 Locus kann zu einer besseren Charakterisierung der verschiedenen Rassen von *Apis mellifera* beitragen.

### ***Apis mellifera* / Enzym-Polymorphismus / Esterase-6**

## REFERENCES

- Badino G, Celebrano G, Manino A (1982) Genetic variability of *Apis mellifera ligustica* Spin in a marginal area of its geographical distribution. *Experientia* 38, 540-541
- Badino G, Celebrano G, Manino A (1983) Population structure and Mdh-1 locus variation in *Apis mellifera ligustica*. *J Hered* 74, 443-446
- Badino G, Celebrano G, Manino A (1984) Population genetics of Italian honeybee (*Apis mellifera ligustica* Spin) and its relationships with neighbouring subspecies. *Boll Mus Reg Sci Nat* (Torino) 2, 571-584
- Badino G, Celebrano G, Manino A, Longo S (1985) Enzyme polymorphism in the Sicilian honeybee. *Experientia* 41, 752-754
- Bitondi MMG, Mestriner MA (1983) Esterase isozymes of *Apis mellifera*: substrate and inhibition characteristics, developmental ontogeny, and electrophoretic variability. *Biochem Genet* 21, 985-1002
- Bolchi Serini G, Sommaruga A, Lapietra G (1982) Studio biometrico di popolazioni alpine di *Apis mellifera* L. *Boll Zool Agrar Bachic Ser II*, 17, 1-18
- Marletto F, Manino A, Pedrini P (1984) Intergradazione fra sottospecie di *Apis mellifera* L in Liguria. *Apic Mod* 75, 159-163
- Ruttner F (1988) *Biogeography and taxonomy of Honeybees*. Springer-Verlag, Berlin Heidelberg
- Sheppard WS, McPherson BA (1986) Genetic variation in honey bees from an area of racial hybridization in western Czechoslovakia. *Api-dologie* 17, 21-32
- Sylvester HA (1986) Biochemical genetics. In: *Bee Genetics and Breeding* (Rinderer TE, ed) Academic Press, Orlando, 177-203