



HAL
open science

Mortality of silver fir and Norway Spruce in the Western Alps - a semi-parametric approach combining size-dependent and growth-dependent mortality

Ghislain Vieilledent, Benoît Courbaud, Georges Kunstler, Jean-François Dhôte

► To cite this version:

Ghislain Vieilledent, Benoît Courbaud, Georges Kunstler, Jean-François Dhôte. Mortality of silver fir and Norway Spruce in the Western Alps - a semi-parametric approach combining size-dependent and growth-dependent mortality. *Annals of Forest Science*, 2010, 67 (3), 10.1051/forest/2009112 . hal-00883575

HAL Id: hal-00883575

<https://hal.science/hal-00883575v1>

Submitted on 11 May 2020

HAL is a multi-disciplinary open access archive for the deposit and dissemination of scientific research documents, whether they are published or not. The documents may come from teaching and research institutions in France or abroad, or from public or private research centers.

L'archive ouverte pluridisciplinaire **HAL**, est destinée au dépôt et à la diffusion de documents scientifiques de niveau recherche, publiés ou non, émanant des établissements d'enseignement et de recherche français ou étrangers, des laboratoires publics ou privés.

Mortality of silver fir and Norway Spruce in the Western Alps – a semi-parametric approach combining size-dependent and growth-dependent mortality

Ghislain Vieilledent^{1,2,3*}, Benoît Courbaud¹, Georges Kunstler¹, Jean-François Dhôte^{4,5}

¹ Cemagref–Mountain Ecosystems Research Unit, 2 rue de la Papeterie, BP 76, 38402 Saint-Martin-d’Hères Cedex, France

² AgroParisTech–UMR1092, Laboratoire d’Étude des Ressources Forêt Bois, 14 rue Girardet, 54000 Nancy, France

³ Cirad–UPR Dynamique Forestière, TA C-37/D, Campus International de Baillarguet, 34398 Montpellier Cedex 5, France

⁴ INRA–UMR1092, Laboratoire d’Étude des Ressources Forêt Bois, 14 rue Girardet, 54000 Nancy, France

⁵ ONF–Département Recherche, Boulevard de Constance, 77300 Fontainebleau, France

(Received 21 April 2009; accepted 4 September 2009)

Keywords:

Abies alba /
conditional probability /
non-parametric model /
Picea abies /
tree mortality

Abstract

- Question: Tree mortality can be modeled using two complementary covariates, tree size and tree growth. Tree growth is an integrative measure of tree vitality while tree diameter is a good index of sensitivity to disturbances and can be considered as a proxy for tree age which may indicate senescence. Few mortality models integrate both covariates because classical model calibration requires large permanent plot data-sets which are rare. How then can we calibrate a multivariate mortality model including size and growth when permanent plots data are not available?
- Location: To answer this question, we studied *Abies alba* and *Picea abies* mortality in the French Swiss and Italian Alps.
- Method: Our study proposes an alternative semi-parametric method which includes a random sample of living and dead trees with diameter and growth measurements.
- Results: We were able to calibrate a mortality model combining both size-dependent and growth-dependent mortality. We demonstrated that *A. alba* had a lower annual mortality rate (10%) than *P. abies* (18%) for low growth ($< 0.2 \text{ mm year}^{-1}$). We also demonstrated that for higher diameters (DBH $\geq 70 \text{ cm}$), *P. abies* had a higher mortality rate (0.45%) than *A. alba* (0.32%).
- Conclusion: Our results are consistent with the mechanisms of colonization-competition trade-off and of successional niche theory which may explain the coexistence of these two species in the Alps. The method we developed should be useful for forecasting tree mortality and can improve the efficiency of forest dynamics models.

Mots-clés :

Abies alba /
probabilités conditionnelles /
modèles non-paramétriques /
Picea abies /
mortalité des arbres

Résumé – Mortalité du sapin pectiné et de l’épicéa commun dans les alpes occidentales – une approche semi-paramétrique combinant la mortalité dépendant de la taille et de la croissance.

- Question : Il est possible de modéliser la mortalité des arbres en utilisant deux covariables complémentaires : la taille et la croissance de l’arbre. La croissance est une mesure synthétique de la vitalité alors que le diamètre est un bon indicateur de la sensibilité aux perturbations et est très fortement corrélié à l’âge de l’arbre, qui détermine la sénescence. Peu de modèles de mortalité intègrent les deux covariables, car cela nécessite, pour les approches classiques, une calibration à partir de données de placettes permanentes qui sont rares. Comment obtenir un modèle de mortalité multivarié, incluant la taille et la croissance, lorsque des données de placettes permanentes ne sont pas disponibles ?
- Localisation géographique : Pour répondre à cette question, nous avons étudié la mortalité du sapin pectiné (*Abies alba*) et de l’épicéa commun (*Picea abies*) dans les Alpes suisses françaises et italiennes.
- Méthode : Notre étude propose une méthode semi-paramétrique alternative s’appuyant sur un échantillon d’arbres morts et vivants avec des mesures de diamètre et de croissance.
- Résultats : Nous avons obtenu un modèle combinant la mortalité dépendant à la fois de la taille et de la croissance. Nous avons démontré qu’*A. alba* avait un taux de mortalité inférieur (10 %) à celui

* Corresponding author: ghislain.vieilledent@cirad.fr

de *P. abies* (18 %) pour une faible croissance ($< 0.2 \text{ mm an}^{-1}$). De plus, pour de larges diamètres (DBH $\geq 70 \text{ cm}$), *P. abies* a un taux de mortalité supérieur (0.45 %) à *A. alba* (0.32 %).

• Conclusion : Nos résultats sont en accord avec les mécanismes de niche de succession et de compromis entre colonisation et compétition qui sont invoqués pour expliquer la coexistence des deux espèces dans les Alpes. Notre méthode devrait contribuer à améliorer la prédiction du taux de mortalité et la précision des modèles de dynamique forestière.

Abbreviations: DBH: Diameter at Breast Height (DBH = 1.30 m), *P. abies*: *Picea abies* (L.) Karst. (Norway Spruce), *A. alba*: *Abies alba* Mill. (Silver Fir), NFI: National Forest Inventory.

1. INTRODUCTION

1.1. The tree mortality process

Natural mortality of trees is an important mechanism driving forest dynamics (Monserud and Sterba, 1999). In forest dynamics models, the mortality provides a quantitative description of several species life-history traits, such as longevity or shade-tolerance, that determine species succession or coexistence (Harcombe, 1987).

Natural mortality of trees can be separated in two categories: regular and irregular mortality (Hawkes, 2000; Lee, 1971; Monserud, 1976). Regular mortality is associated with a progressive reduction in vitality. It can result either from competition for light, water and soil nutrients (Peet and Christensen, 1987) or from senescence defined as a decrease in resource utilization efficiency because of limitations in respiratory efficiency or hydraulic conductance (Gower et al., 1996; Hubbard et al., 1999; MacFarlane et al., 2002). Irregular mortality can be described as mortality caused by random events or hazards, e.g. by insect attacks, fire, wind, snow or rock falls (Lee, 1971) which are frequent in highly disturbed mountain stands (Clark, 1996; Coomes et al., 2003; Nishimura, 2006; Worrall et al., 2005). Decreasing vitality also leads to increasing susceptibility to fatal agents, e.g. insects, fungi and drought, so that irregular and regular mortality interact together to determine tree death.

From a statistical point of view, mortality can be modeled using two complementary covariates: tree size and tree growth. Growth is an integrative measure of tree vitality which, at a young age, depends principally on competition. For a given size, fast growing individuals are supposed to have a higher survivorship than slow growing individuals (Bigler and Bugmann 2003; Kobe and Coates 1997; Kunstler et al. 2005; Lin et al. 2001; Monserud 1976; Wyckoff and Clark 2000; 2002). In combination with growth, tree diameter is a good index of sensitivity to disturbances. Bigger trees with bigger crowns are more sensitive to hard wind and heavy snow whereas smaller trees are protected by the canopy (Canham et al., 2001; Fridman and Valinger, 1998; Peltola et al., 1999; Valinger and Fridman, 1997). Moreover it seems that insects affect preferentially older trees (Zolubas, 2003) and that fires and large mammals cause mortality among small trees (Muller-Landau et al., 2006). Tree diameter can also be considered as a proxy for tree age which determines the senescence.

1.2. Taking into account both size- and growth-dependent mortality in a flexible model

Despite its importance in determining species strategies and forest dynamics, tree mortality is difficult to model (Franklin et al., 1987; Hawkes, 2000). Most mortality models in forest systems predict only growth-dependent mortality for juveniles (Kobe et al., 1995; Kunstler et al., 2005) or a specific type of size-dependent irregular mortality (Hawkes, 2000; Monserud, 1976). In her review on woody plant mortality algorithms, Hawkes (2000) underlined that only a third of the models integrate combinations of covariates to determine mortality. Many of them combine competition indexes and size (Eid and Tuhus, 2001; Moore et al., 2004; Uriarte et al., 2004; Yao et al., 2001). Competition affects the carbon balance of a tree by depriving it of resources. Nevertheless, since competition, age and abiotic factors all affect growth, growth is a more integrative measure of whole-plant carbon balance, which determines tree vitality (Kobe et al., 1995). Tree growth can be estimated from tree-ring series, which provide high resolution records of tree growth, or from consecutive permanent plot censuses which provide a coarser resolution of growth through DBH increment measures (Wunder et al., 2007). Permanent plot surveys are less destructive than tree coring, but they require at least three censuses on long time intervals to link mortality observations between the second and third census to past growth between the two first censuses. Such experimental devices are not always available (but see Wunder et al., 2007; and Monserud, 1976) so that some authors have proposed statistical methods to obtain mortality-growth models from a reduced sample of dead and living trees from a single census (Kobe et al., 1995; Wyckoff and Clark, 2000). Nevertheless, no methods are available that combine both growth and size in a multivariate mortality model when no permanent plot data are available.

When permanent plot data are available, competition indexes (or growth) and size are often combined in a parametric regression, such as the logistic regression, to determine mortality estimates (Eid and Tuhus, 2001; Fortin et al., 2008; Moore et al., 2004; Uriarte et al., 2004; Wunder et al., 2007; Yao et al., 2001). Parametric functions have two disadvantages when trying to calibrate mortality models. First, they assume a strict model shape which may not conveniently represent the highly skewed shape of mortality given growth and size. Second, their estimations depend on the distribution of the data points which are often unbalanced in regard to diameter with less observations for big trees (Lavine, 1991; Vieilledent et al., 2009; Wyckoff and Clark, 2000).

Table I. Cemagref permanent plot characteristics.

Site name	Elevation (m)	Latitude	Longitude	Surface (ha)	First census	Second census	Number of trees at first census	Species (% of stems)			Number of cores	
								<i>Abies alba</i>	<i>Picea abies</i>	Others	Living trees	Dead trees
Chapître 1	1 500	44° 37' 45" N	6° 00' 15" E	0.25	1994	2006	424	56	0	44	0	12
Chapître 3	1 551	44° 38' 03" N	6° 00' 18" E	0.25	1994	2006	196	56	0	44	0	11
Chapître 4	1 496	44° 37' 45" N	6° 00' 01" E	0.25	1994	2006	188	54	0	46	0	7
Premol	1 434	45° 06' 41" N	5° 51' 26" E	0.80	2001	2005	503	35	45	20	95	43
Queige	1 358	45° 41' 57" N	6° 27' 30" E	0.50	2002	2006	285	51	49	0	124	12
Sixt	1 520	46° 01' 16" N	6° 48' 51" E	0.25	1994	2005	608	1	95	4	64	77
SteFoy	1 642	45° 33' 08" N	6° 54' 23" E	0.25	1994	2006	219	0	99	1	34	70
StRhemy	1 874	45° 50' 16" N	7° 11' 18" E	0.30	2003	—	103	0	84	16	82	0
Teppas	1 720	45° 02' 36" N	6° 40' 30" E	1.00	1998	—	994	71	22	7	579	0

1.3. Objectives and hypothesis

In this study we propose an alternative semi-parametric method using conditional probabilities to model both size-dependent and growth-dependent mortality using diameter and past radial growth as covariates. The method is applicable when no long-term permanent plot data are available. The approach relies principally on a prior mortality rate that can be obtained from National Forest Inventories. The prior is combined with diameter and growth data obtained for a sample of living and dead trees on a reduced number of plots.

We focused on two species: *Abies alba* Mill. (Silver Fir) and *Picea abies* (L.) Karst. (Norway Spruce), which grow in mixed or pure stands at the mountain-belt elevation (800–1800 m) in the Western Alps. Our objective was to accurately model size- and growth-dependent mortality for these two species providing insights into species strategies and dynamics. Our ecological hypothesis were (i) *A. alba* survives better at low growth rates than *P. abies* as it is more shade-tolerant and (ii) *P. abies* is more susceptible to mortality than *A. alba* for larger diameters because it is more sensitive to drought, insects, snow damage and storms at this elevation.

2. MATERIALS AND METHODS

2.1. Field data for mortality-diameter model

Mortality modelling was based on three different data-sets: (i) Swiss national forest inventory (NFI), (ii) French NFI, and (iii) permanent-plots from the Cemagref network.

The Swiss NFI includes 1 982 permanent sample plots established between 1983 and 1985 and measured again between 1993 and 1995. Tree attributes (tree species, status dead or alive and DBH) were collected on two concentric circular plots, 200 m² for trees of at least 12 cm DBH and 500 m² for trees of at least 36 cm DBH (Ulmer, 2006). Logged trees were not taken into account. The Swiss NFI stands were dominated by *A. alba* or *P. abies* and had an elevation from 800 to 1 800 m

(mountain-belt elevation). Plots were all situated in the Swiss Alps.

The French NFI was analyzed for the twelve administrative areas that constitute the French Alps. Measurements are available from 1992 to 2002 on 4 776 temporary plots and are part of the third NFI. Tree attributes were measured on three concentric circular plots with a radius of 6, 9 and 15 m for trees having DBH between 7.5 and 22.5 cm, between 22.5 and 37.5 cm and above to 37.5 cm, respectively. Dead trees for which death was estimated to be less than 5 y were identified on the basis of the dates of past tempests and the state of the bark. Similar to the Swiss NFI, logged trees were not included in the analysis.

The two NFIs were complemented by 7 permanent-plots from the Cemagref network located in the French Alps. Plots were installed from 1994 to 2002 and were measured again from 2005 to 2006 (Tab. I). No silvicultural operations had been performed on these plots for at least ten years before installation. Plots ranged from 0.25 to 0.80 ha. Stands were dominated by *A. alba* and *P. abies*. Plot elevations ranged from 800 to 1 800 m. All trees with a minimum of 5 cm DBH were measured.

Combining these three data-sets, a large sample size was available for analysis with a total of 22 127 *A. alba* and 45 237 *P. abies*.

2.2. Mortality-diameter model

We used a semi-parametric Bayesian approach to estimate the mortality-diameter model parameters. This approach relied on a modified Ayer's algorithm fully detailed in a previous article (Vieilledent et al., 2009). The semi-parametric model divided the range of diameters into bins and then calculated the associated probabilities of mortality. The model assumed a monotonic decrease of mortality on the interval $[0, D_0)$ followed by a monotonic increase of mortality on the DBH interval $[D_0, 135)$ (DBH in cm). D_0 was the diameter at which the mortality was minimal. The modified Ayer's algorithm

allowed us to identify D_0 ($D_0 = 45$ cm for both species) and the sequence of diameter bins which respects our assumption of decreasing and increasing mortality with DBH.

For each identified DBH class, we estimated an annual mortality rate using a Bayesian approach. Let z_{ij} be the event that individual i of diameter class j survived ($z_{ij} = 1$) or died ($z_{ij} = 0$) during a time interval Y_i (in years) with probability $1 - \mu'_{D_{ij}}$, $z_{ij} \sim \text{Bernoulli}(z_{ij}|1 - \mu'_{D_{ij}})$. We expressed $1 - \mu'_{D_{ij}}$ as a function of the annual mortality rate μ_{D_j} associated with diameter class j and Y_i :

$$\mu'_{D_{ij}} = 1 - (1 - \mu_{D_j})^{Y_i}. \quad (1)$$

We used a logit transformation for mortality rate:

$$\text{logit}(\mu_{D_j}) = \lambda_{D_j}. \quad (2)$$

Priors for the parameters λ_{D_j} were taken non-informative with a large variance: $\lambda_{D_j} \sim \text{Normal}(0, 1.0 \times 10^6)$. We obtained a posterior distribution for each parameter from which we computed the mean, the standard deviation, and the 95% quantiles.

2.3. Field data including growth and diameter for dead and living trees

Growth data for dead and living trees were not available in the NFI data-sets. To estimate size and recent growth history for dead and living trees, we measured the DBH and we cored all recently dead trees and a random sample of living trees with height > 1.30 m on the 7 Cemagref plots. We completed the data-set for living trees adding two more plots which were located in the Italian Alps (Tab. I). The annual mean radial growth on the last five years was obtained from analysis of cores using the LINTAB 5 measuring table and the TSAP software. We measured the DBH of all dead and sampled living trees using a metric diameter tape. A total of 520 living trees and 53 dead trees were measured for *A. alba* and 458 and 179 for *P. abies*. For living trees, using core analysis on a time interval of 25 y, we obtained several values of DBH and past radial growth. A total of 2 589 measurements for living trees and 53 measurements for dead trees were obtained for *A. alba* and 2 270 and 179 for *P. abies* (Fig. 1).

As we had no idea of the date of death of dead trees and as we only cored a sample of living trees on each plot, we lacked the proportions of living and dead trees to determine an annual mortality rate (Wyckoff and Clark, 2000). In this case, classical statistics such as logistic regressions (Monserud and Sterba, 1999; Wunder et al., 2007) cannot be used to estimate annual mortality rate as a function of past radial growth and diameter. Nevertheless, it is possible to compute the probability for a dead tree to be in the diameter (D) class j and in the growth (G) class k : $p(D_j, G_k|\text{dead})$ and the corresponding probability for a living tree: $p(D_j, G_k|\text{alive})$. Taken together, these two probabilities can be used to compute the annual mortality rate given diameter class j and growth class k : $p(\text{dead}|D_j, G_k)$ (see next part for details).

Too few dead trees were measured for large diameters (DBH $\geq D_0$) with 3 and 4 dead trees with DBH ≥ 45 cm for

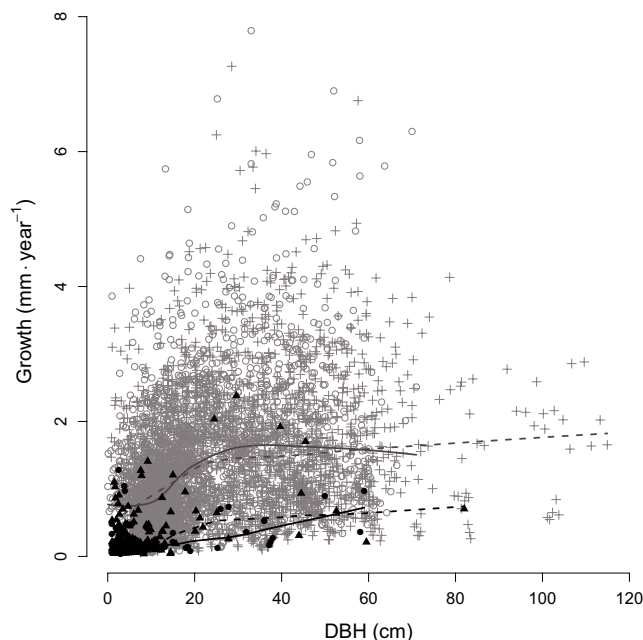


Figure 1. Data repartition for dead and living trees in regard to growth and diameter. A total of 2 589 living trees (grey unfilled dots) and 53 dead trees (black filled dots) were measured for *A. alba* and respectively 2 270 (grey cross) and 179 (black filled triangle) for *P. abies*. Too few dead trees were measured for large DBH (see respectively 3 and 4 dead trees for *A. alba* and *P. abies* with DBH ≥ 45 cm) to have the ability to decompose mortality given growth and diameter on this range of diameter. We used a local smoother (see function `lowess()` in R 2.5.0, Ihaka and Gentleman, 1996) to visualize growth-diameter relationship for dead (black curves) and living trees (grey curves) for *A. alba* (plain lines) and *P. abies* (dashed lines). The smoother indicated that past radial growth was lower for dead trees than for living trees for both species, whatever the diameter value.

A. alba and *P. abies* respectively (Fig. 1). As a consequence, we were not able to accurately decompose annual mortality rate for diameter and growth classes for this diameter range. For trees with DBH $\geq D_0$ we only obtained mortality rate estimates as a function of diameter using National Forest Inventories and Cemagref permanent plot data. This should not affect the quality of the mortality model for larger trees. Indeed, competition, which affects growth, occurs principally for small trees. Moreover, senescence, which is assumed to affect the growth of all trees of the same age in the same way, is taken into account through the diameter covariate, which can be considered as a proxy for age.

2.4. Mortality rate integrating both DBH and past radial growth for each species

2.4.1. Use of the Bayes formula to compute the combined mortality rate

For smaller trees (with DBH $< D_0$), we obtained the combined mortality rate $\mu_{DG_{jk}} = p(\text{dead}_{D < D_0}|D_j, G_k)$ as a function

of the diameter class j and the growth class k using the Bayes' formula and the prior probability of death for a tree with DBH $< D_0$ that we denoted $\mu_{D<D_0} = p(\text{dead}_{D<D_0})$:

$$\begin{aligned} \mu_{DG_{jk}} &= p(\text{dead}_{D<D_0} | D_j, G_k) = \frac{p(D_j, G_k | \text{dead}_{D<D_0}) p(\text{dead}_{D<D_0})}{p(D_j, G_k)} \\ &= \frac{p(D_j, G_k | \text{dead}_{D<D_0}) \mu_{D<D_0}}{p(D_j, G_k | \text{dead}_{D<D_0}) \mu_{D<D_0} + p(D_j, G_k | \text{alive}_{D<D_0}) (1 - \mu_{D<D_0})}. \end{aligned} \quad (3)$$

We denoted R_{jk} the following ratio of probabilities:

$$R_{jk} = p(D_j, G_k | \text{dead}_{D<D_0}) / p(D_j, G_k | \text{alive}_{D<D_0}). \quad (4)$$

The two terms of the ratio were expressed as functions of $d_{DG_{jk}}$ and $n_{DG_{jk}} - d_{DG_{jk}}$, the number of dead and living trees in diameter class j and growth class k respectively (Eqs. (5) and (6)). This led to simple expressions for the ratio of probabilities R_{jk} (Eq. (7)) and for the combined mortality rate $\mu_{DG_{jk}}$ (Eq. (8))

$$p(D_j, G_k | \text{dead}_{D<D_0}) = d_{DG_{jk}} / \sum_{j,k} d_{DG_{jk}} \quad (5)$$

$$p(D_j, G_k | \text{alive}_{D<D_0}) = (n_{DG_{jk}} - d_{DG_{jk}}) / \sum_{j,k} (n_{DG_{jk}} - d_{DG_{jk}}) \quad (6)$$

$$R_{jk} = (d_{DG_{jk}} \sum_{j,k} (n_{DG_{jk}} - d_{DG_{jk}})) / ((n_{DG_{jk}} - d_{DG_{jk}}) \sum_{j,k} d_{DG_{jk}}) \quad (7)$$

$$\mu_{DG_{jk}} = (R_{jk} \mu_{D<D_0}) / (R_{jk} \mu_{D<D_0} + (1 - \mu_{D<D_0})). \quad (8)$$

2.4.2. Determination of the prior

To compute $\mu_{DG_{jk}}$ we needed to determine $\mu_{D<D_0} = p(\text{dead}_{D<D_0})$, which is the prior probability of death for a tree with DBH $< D_0$ (Eq. (8)). We selected the trees with DBH $< D_0$ in the NFI data-sets and in the Cemagref permanent plots which integrated diameter measures. We estimated $\mu_{D<D_0}$ using a Bayesian approach. Let y_i be the event that individual i with DBH $< D_0$ survives ($y_i = 1$) or dies ($y_i = 0$) during a time interval Y_i (in years) with probability $1 - \mu'_{D<D_0}$, $y_i \sim \text{Bernoulli}(y_i | 1 - \mu'_{D<D_0})$. We expressed $1 - \mu'_{D<D_0}$ in function of the annual mortality rate $\mu_{D<D_0}$:

$$\mu'_{D<D_0} = 1 - (1 - \mu_{D<D_0})^{Y_i}. \quad (9)$$

We used a logit transformation for mortality rate:

$$\text{logit}(\mu_{D<D_0}) = \lambda_{D<D_0} \quad (10)$$

and the prior for parameter $\lambda_{D<D_0}$ was taken non-informative with a large variance: $\lambda_{D<D_0} \sim \text{Normal}(\lambda_{D<D_0} | 0, 1.0 \times 10^6)$. We then obtained a posterior distribution for parameter $\mu_{D<D_0}$ for each species from which we computed the mean, the standard deviation, and the 95% quantiles.

2.4.3. Two-dimensional Ayer's algorithm to determine diameter and growth bins

The mortality model given diameter and growth assumed that mortality rate was decreasing on $[0, D_0)$ for diameter (cm) and on $[0, 8)$ for growth (mm year⁻¹). We then used a modified two-dimensional Ayer's algorithm to determine diameter and growth bins that respected these two assumptions (Ayer et al., 1955; Vieilledent et al., 2009). Our algorithm began with arbitrarily small bin widths of 5 cm for diameter and of 0.1 mm year⁻¹ for growth. Diameter of all living and dead trees was partitioned into bins $j = 1, 2, \dots, q_D$ and growth was partitioned into bins $k = 1, 2, \dots, r_G$. A corresponding annual mortality rate for each bin $\mu_{DG_{jk}}$ was estimated with equation (8). For each couple (j, k) , we checked firstly that $\mu_{DG_{jk}} > \mu_{DG_{j+1,k}}$ and secondly that $\mu_{DG_{jk}} > \mu_{DG_{j,k+1}}$. If the first inequality considering DBH was not respected, bins were expanded in regard to DBH: $\text{bin}_{jk} \leftarrow \text{bin}_{jk} + \text{bin}_{j+1,k}$ and data were re-binned: $d_{DG_{jk}} \leftarrow d_{DG_{jk}} + d_{DG_{j+1,k}}$ and $n_{DG_{jk}} \leftarrow n_{DG_{jk}} + n_{DG_{j+1,k}}$. If the first inequality was respected but the second considering growth was not, bins were expanded in regard to growth: $\text{bin}_{jk} \leftarrow \text{bin}_{jk} + \text{bin}_{j,k+1}$ and data were re-binned: $d_{DG_{jk}} \leftarrow d_{DG_{jk}} + d_{DG_{j,k+1}}$ and $n_{DG_{jk}} \leftarrow n_{DG_{jk}} + n_{DG_{j,k+1}}$. Each time a bin was modified, the algorithm restarted from $j = 1$ and $k = 1$. The process was continued until a monotonic decreasing sequence was reached on $[0, D_0)$ for diameter and on $[0, 8)$ for growth.

The initial number of bins $m_{DG, \text{Start}}$ was equal to $q_{D, \text{Start}} \times r_{G, \text{Start}} = 135/5 \times 8/0.1 = 2160$. When monotonicity was achieved with a decrease of mortality on $[0, D_0)$ for DBH (cm) and a decrease on $[0, 8)$ for growth (mm year⁻¹), the final number of bins $m_{DG, \text{Final}}$ could be between 1 (one mean mortality rate for all trees with $0 \leq \text{DBH} < D_0$ and $0 \leq \text{growth} < 8$) and $m_{DG, \text{Start}}$. Final bin width was also variable, going from 5 to D_0 for DBH width and from 0.1 to 8 for growth width. Contrary to classical parametric logistic approaches (Monserud, 1976; Wunder et al., 2007), the semi-parametric model structure we developed was not entirely specified *a priori* but was instead determined from data and the number of parameters were flexible and not fixed in advance.

2.5. Mortality-growth model

We were interested in comparing species behavior regarding growth-dependent mortality for insights into species strategies and successional dynamics. For each class of growth g of width equal to 0.2 mm year⁻¹, we computed the annual mortality rate μ_{G_g} :

$$\begin{aligned} \mu_{G_g} &= \int_{j=1}^{q_D} \int_{k=1}^{r_G} \mu_{DG_{jk}} p(DG_{jk} \cap g) dj dk \\ &= \sum_{j=1}^{q_D} \sum_{k=1}^{r_G} \mu_{DG_{jk}} n_{jk \cap g} / (\sum_{j=1}^{q_D} \sum_{k=1}^{r_G} n_{jk}). \end{aligned} \quad (11)$$

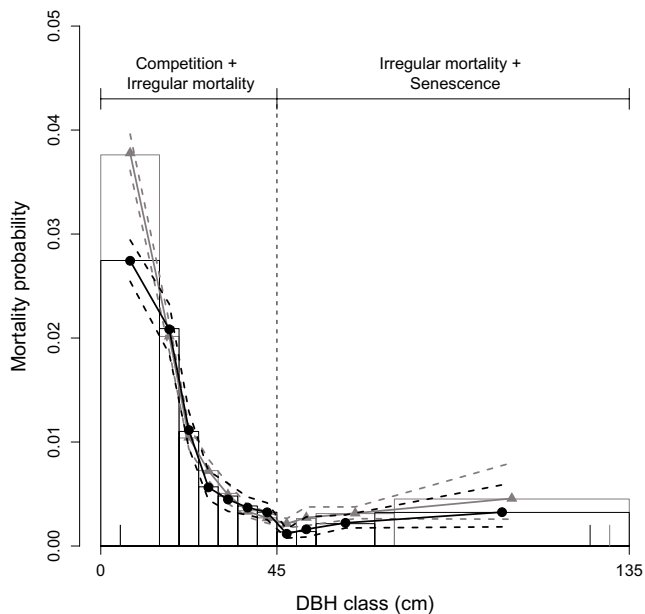


Figure 2. Mortality-diameter semi-parametric model for *A. alba* and *P. abies*. Models for *A. alba* (black lines and dots) and *P. abies* (grey lines and triangles) are represented with posterior mean (—) and 95% quantiles (---). Bar widths represent bins values obtained from modified Ayer's algorithm and bar height represent maximum likelihood estimates obtained within Ayer's algorithm. Vertical lines on the DBH axis indicate range of data for *A. alba* (black) and *P. abies* (grey).

3. RESULTS

3.1. Mortality-diameter relationship

Using NFI data and Cemagref plots, we were able to obtain a mortality-diameter model. For both species, we observed a U-shape mortality-DBH relationship with a minimum mortality rate D_0 equal to 45 cm (Fig. 2). For the smallest diameter class (DBH < 15 cm), *P. abies* had a higher mortality rate (3.76%) than *A. alba* (2.75%). For high diameters (DBH \geq 45 cm), *P. abies* had a higher mortality rate than *A. alba* (Fig. 2) with a maximum mortality rate of 0.45% for *P. abies* and 0.32% for *A. alba* in the biggest DBH class (Tab. II).

To compute the combined size-dependent and growth-dependent mortality, we needed to estimate a prior mortality probability for DBH < 45 cm. On this diameter range, *P. abies* had a significantly higher annual mortality rate prior (1.49%) than *A. alba* (1.38%) (Fig. 3).

3.2. Mortality-growth relationship

For both species, mortality rate was increasing as growth was decreasing (Fig. 4). Fast growing individuals ($> 0.6 \text{ mm year}^{-1}$) had a lower annual mortality rate ($< 2\%$) than slow growing individuals (Tab. II and Fig. 4).

For the same value of growth, *P. abies* had a higher mortality rate than *A. alba* (Tab. II and Fig. 4). The difference of mortality rate between the two species was increasing as

growth was decreasing with a mortality rate for growth inferior to 0.2 mm year^{-1} of 18.42% for *P. abies* against 10.21% for *A. alba* (Tab. II). We demonstrated that, in our context, *A. alba* survived better at low growth rates than *P. abies*.

3.3. Size- and growth-dependent mortality model

The semi-parametric model allowed a flexible description of mortality as a function of diameter and growth for DBH < 45 cm. With our method, we were able to differentiate growth-related and size-related mortality on that range of diameter (Fig. 5). For a given DBH class, a less vigorous tree with a lower growth had a higher mortality rate than a more vigorous tree with a higher growth (Fig. 5). The semi-parametric model didn't assume a strict model shape and allowed us to represent the skewed shape of the mortality surface (Fig. 5).

The low number of data for large trees (DBH \geq 45 cm) (Fig. 1) didn't permit a separation of growth-related mortality from size-related mortality. Because growth-related mortality affects principally small sub-canopy trees susceptible to competition, this should not affect the quality of the mortality model for large trees. For large trees (DBH \geq 45 cm), size-related mortality referred both to irregular mortality and senescence (Figs. 2 and 5).

4. DISCUSSION

4.1. A model combining size-dependent and growth-dependent mortality

The mortality model we developed integrates both size-dependent and growth-dependent mortality which are taken into account through diameter and past radial growth covariates. Tree mortality increased with decreasing growth for smaller trees (DBH < 45 cm) affected by competition. Mortality had a U-shape relation with diameter accounting for disturbance-related mortality and senescence.

Most mortality models published to date have focused on one type of mortality. Some authors studied only carbon balance related mortality using growth as covariate (Bigler and Bugmann, 2003; Dobbertin, 2005; Kobe and Coates, 1997; Kunstler et al., 2005; Lin et al., 2001; Monserud, 1976; Wyckoff and Clark, 2000; Wyckoff and Clark, 2002). A limitation of this approach is that growth-mortality models alone are not sufficient for a good description of mortality as disturbances are not taken into account in the mortality process. Secondly, in forest dynamics models, tree growth is often related to local resource availability such as quantity of light (Courbaud et al., 2003), soil moisture or quantity of nutrients (Korzukhin and Ter-Mikaelian, 1995; Lexer and Hönninger, 2001). But, resource availability may not be the limiting factor for growth and carbon balance. For older trees, senescence mechanisms such as decreasing respiratory efficiency and decreasing hydraulic conductance may limit growth. Such mechanisms are not easily quantified and implemented in forest dynamics models. Adding a mortality-diameter relation

Table II. Values of annual mortality rate given diameter or growth. The annual mortality probability associated to diameter class j is μ_{D_j} and the annual mortality rate given growth class g is μ_{G_g} . For diameter class j , n_{D_j} is the total number of trees and d_{D_j} is the number of dead trees. For growth class g , n_{G_g} is the total number of trees and d_{G_g} is the number of dead trees.

DBH class (cm)	Living trees ($n_{D_j} - d_{D_j}$)	Dead trees (d_{D_j})	μ_{D_j} estimates (%)	Growth class (mm·year ⁻¹) $D < 45$ cm	Living trees ($n_{G_g} - d_{G_g}$)	Dead trees (d_{G_g})	μ_{G_g} estimates (%)
<i>A. alba</i>							
[0, 15)	4 423	748	2.75	[0.0, 0.2)	161	29	10.21
[15, 20)	1 787	255	2.09	[0.2, 0.4)	257	11	3.09
[20, 25)	1 623	111	1.10	[0.4, 0.6)	257	5	1.99
[25, 30)	1 777	59	0.57	[0.6, 0.8)	267	2	1.55
[30, 35)	1 446	41	0.48	[0.8, 1.0)	232	1	0.29
[35, 40)	1 889	44	0.39	[1.0, 1.2)	219	1	0.23
[40, 45)	2 534	48	0.32	[1.2, 1.4)	194	1	0.21
[45, 50)	1 783	14	0.14	[1.4, 3.0)	692	0	0.00
[50, 55)	1 256	10	0.14				
[55, 70)	1 770	22	0.21				
[70, 135)	478	9	0.32				
Total	20 766	1 361			2 279	50	
<i>P. abies</i>							
[0, 15)	7 291	1 941	3.76	[0.0, 0.2)	119	96	18.42
[15, 20)	4 616	741	2.02	[0.2, 0.4)	160	40	6.88
[20, 25)	4 104	316	1.04	[0.4, 0.6)	164	16	2.78
[25, 30)	4 036	207	0.73	[0.6, 0.8)	174	9	1.35
[30, 35)	3 176	115	0.51	[0.8, 1.0)	167	5	0.59
[35, 40)	4 196	108	0.34	[1.0, 1.2)	126	3	0.42
[40, 45)	4 887	93	0.27	[1.2, 1.4)	133	2	0.17
[45, 50)	3 502	55	0.22	[1.4, 3.0)	594	4	0.06
[50, 55)	2 269	43	0.26				
[55, 75)	3 140	71	0.31				
[75, 135)	319	11	0.45				
Total	41 536	3 701			1 637	175	

with an increasing mortality for $DBH \geq 45$ cm allows taking into account mortality associated with senescence mechanisms. Other authors studied mortality due only to specific disturbances such as rock fall, insects (Hansen et al., 2006), snow damage (Fridman and Valinger, 1998; Peltola et al., 1999) or windthrows (Canham et al., 2001) without considering growth-related mortality so that a tree with high growth and a tree with low growth were not differentiated in terms of mortality probability.

Some other models integrated both types of mortality. In the 1996 version of SORTIE model (Pacala et al., 1996), regular mortality was growth-dependent and was combined to a fixed background mortality rate of 1% assigned to both juvenile and adult trees. Depending on the model version, irregular mortality associated with severe disturbances such as windthrow was added (Papaik and Canham, 2006). In the ForClim model (Bugmann, 1994), mortality was divided into age-related mortality, stress-induced mortality and disturbance-related mortality. In these cases, mortality models did not use specifically collected data, but empirical data collected in other locations or sensible estimates (Hawkes, 2000). In contrast, our method allows an estimation of mortality rate combining both size-dependent and growth-dependent mortality from field obser-

vations. It should be mentioned that site environmental factors (such as topography, altitude, soil or climate) may modulate the relationship between size, growth and mortality (Das et al., 2008). The model described in this study only reflects average site conditions but not local site conditions.

4.2. A flexible model making the most of available data

The semi-parametric approach we developed allowed us to obtain a flexible representation of the two-dimensional and highly skewed shape of mortality given growth and diameter. Other authors have developed parametric regressions (such as logistic regression) using permanent plot data which included both growth (either directly or indirectly through competition indexes) and size to obtain synthetic mortality models including regular and irregular mortality (Eid and Tuhus, 2001; Fortin et al., 2008; Moore et al., 2004; Uriarte et al., 2004; Wunder et al., 2007; Yao et al., 2001). Nevertheless, it has been demonstrated that due to unbalanced data-sets from permanent plots and to the highly skewed shape of mortality, parametric models assuming a strict model shape may lead to biased mortality estimates and wrong interpretations concerning species

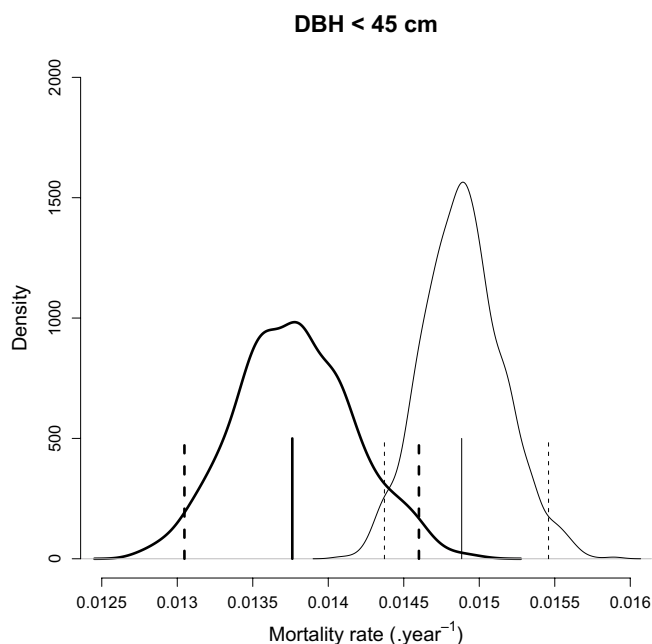


Figure 3. Small trees mortality prior ($\mu_{D < D_0}$) for *A. alba* and *P. abies*. Prior probability distributions for *A. alba* (bold plain line) and *P. abies* (thin plain line) are compared. Vertical plain line indicates the mean and vertical dashed lines indicate 95% credible interval. For trees with DBH < 45 cm, *P. abies* has an annual mortality rate significantly higher than *A. alba*.

life-history traits differences (Lavine, 1991; Vieilledent et al., 2009; Wyckoff and Clark, 2000). The semi-parametric model we developed didn't assume a strict model shape and is less dependent on the distribution of the data points.

In order to parameterize classical logistic regressions for mortality estimation, one requires large data-sets based on permanent plot survey with multiple censuses over long time periods (Hawkes, 2000; Wunder et al., 2007). To account for growth, at least three censuses are needed to link mortality observation between the second and third census to growth between the two first censuses. Monserud (1976) used data obtained from 20–28 y of observations and Wunder et al. (2007) used a permanent plot network initiated in the late 1940's. Such experimental devices with long-term data are rare. Some authors have previously described methods using a reduced sample of dead and living trees with growth measurements to avoid the use of permanent plot data for growth-related mortality (Kobe et al., 1995; Wyckoff and Clark, 2000). We extended the method to a multivariate mortality model including both size and growth. As the mortality prior can be obtained from bibliography or previous studies, the only data needed is a random sample of dead and living trees with DBH and past radial growth measures which can be used to obtain the inverse probabilities and the ratio of probabilities detailed in Equations (3) and (4). The method we propose is then simple and quick to implement when no permanent plot data are available.

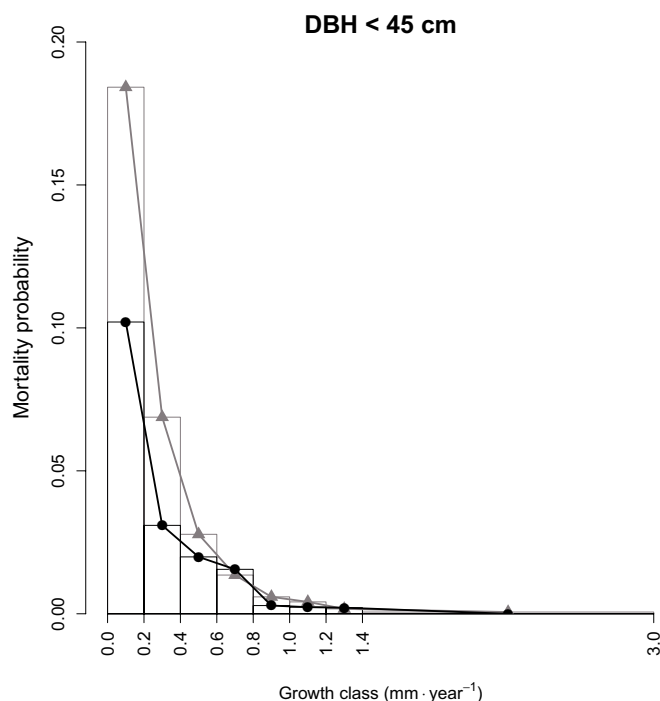


Figure 4. Mortality-growth semi-parametric model for small trees (DBH < D_0) of *A. alba* and *P. abies*. Mortality estimates μ_{G_g} for each growth class g of range 0.2 mm year^{-1} were obtained integrating the combined mortality rates $\mu_{DG_{jk}}$ on all diameter classes j and growth class intersections $k \cap g$ (see Eq. (11)). Mean posterior for *A. alba* (black lines and dots) and *P. abies* (grey lines and triangles) are represented. Bar widths represent fixed bins values of 0.2 mm year^{-1} for growth and bar height also represent the mean posterior. 95% credible intervals due to uncertainty on priors were too narrow to be represented on the graph. From this graph, we can see that for small trees (DBH < 45 cm) at low growth (growth < 0.6 mm year^{-1}), *P. abies* has a higher mortality rate than *A. alba*.

4.3. A model which helps to understand and forecast *A. alba* and *P. abies* dynamics

With our model, we were able to demonstrate that *A. alba* was more resistant to low growth ($< 0.6 \text{ mm year}^{-1}$) than *P. abies* and that *P. abies* had a higher mortality rate than *A. alba* for high diameter (DBH $\geq 45 \text{ cm}$). As small trees are those receiving lower levels of light and having a lower growth, the better resistance of *A. alba* to low growth can be associated with its relative shade-tolerance compared to *P. abies*. These results match the classical accepted dynamics of mixed *P. abies* and *A. alba* stands which considers *P. abies* as being the relative early-successional species (Schütz, 1969; Wasser and Frehner, 1996). Early-successional plant species are supposed to have higher fecundity, longer dispersal, faster growth when resources are abundant, and slower growth and lower survivorship when resources are scarce compared to late-successional species (Rees et al., 2001). Such traits contribute to the competition-colonization trade-off (Tilman, 1994) and to the successional niche mechanisms (Pacala and

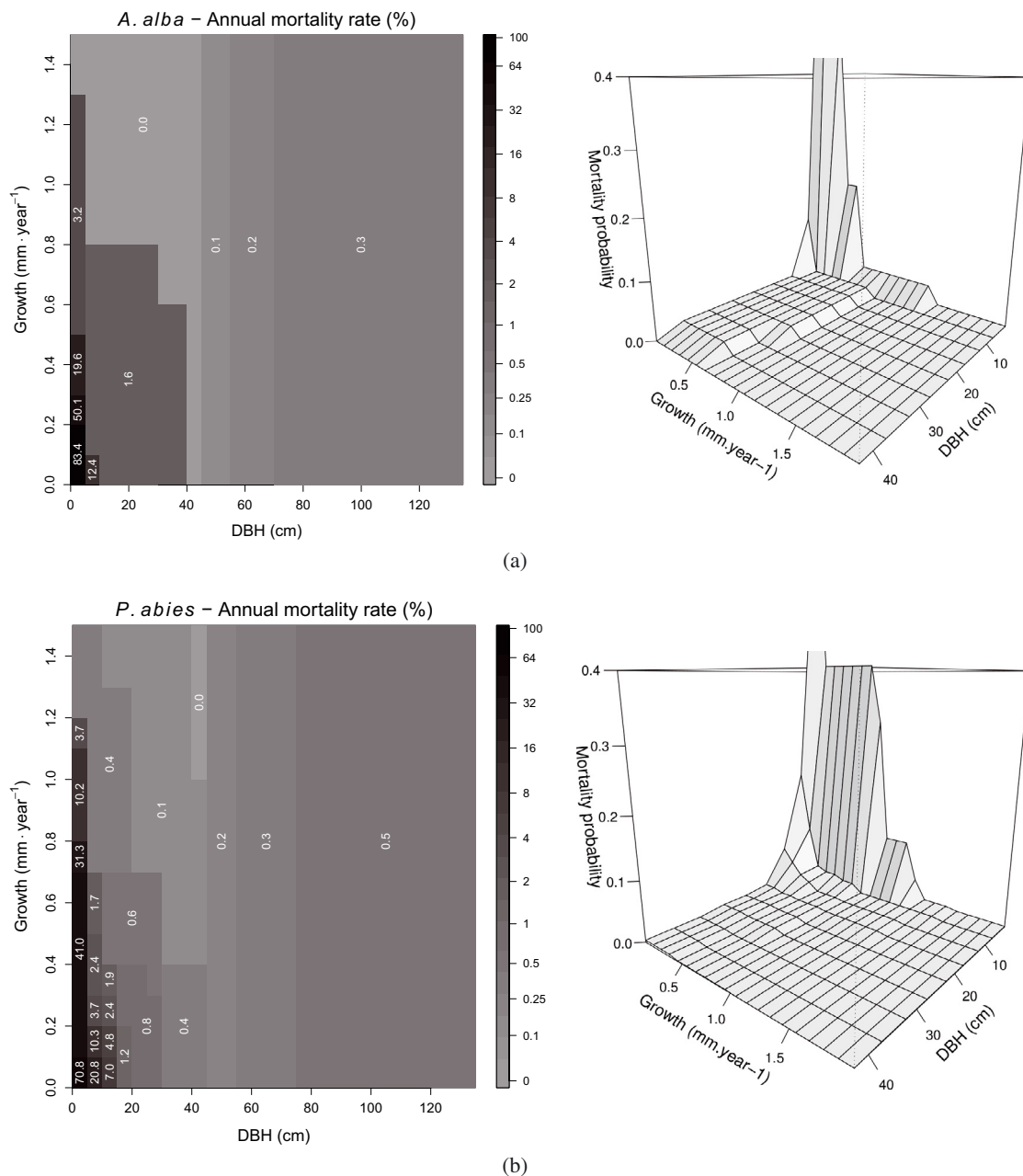


Figure 5. Multivariate mortality rate estimates for *A. alba* (a) and *P. abies* (b). Bins for diameter-classes and growth-classes were obtained with the modified two-dimensional Ayer’s algorithm. Mortality model is independent of growth for DBH ≥ 45 cm with the only assumption that mortality increases with diameter. For DBH < 45 cm, the model assumes that mortality decreases both with growth and diameter. Mortality model combines size-dependent and growth-dependent mortality.

Rees, 1998; Rees et al., 2001) which are commonly pointed up to explain species coexistence.

With regard to successional niche, previous studies have shown that *P. abies* saplings had higher growth at full light than *A. alba* (Grassi and Bagnaresi, 2001). Our results suggest that this advantage may be compensated by a higher mortality rate at low light for *P. abies* than for *A. alba*. With regard to colonization-competition trade-off, *P. abies* is sup-

posed to have a higher fecundity and longer dispersal than *A. alba* (Dovčiak et al., 2008; Sagnard et al., 2007). This colonization advantage may be balanced by a lower competitive ability for *P. abies* than for *A. alba* when resources (typically light) are scarce (Schütz, 1969; Wasser and Frehner, 1996). In regard to our results, we can argue that *P. abies* colonization advantage can also be compensated by a higher mortality rate for high diameter which can be interpreted as a lower life-span

due to lower resistance to external perturbations such as rock-fall (Stokes et al., 2005), storms (Lundstrom et al., 2007) and insect attack (Zolubas, 2003) or to an earlier senescence.

To conclude, we emphasize the advantages of the mortality model we developed as (i) it includes both size-related and growth-related mortality (ii) making the most of the available mortality data (iii) without assuming a strict model shape for the mortality surface (iv) and allowing the accurate interpretation of species life-histories. Therefore, the method we propose should be of value in helping to understand and forecast forest community dynamics.

Acknowledgements: Grateful thanks are due to Marc Fuhr, Yoan Paillet, Eric Mermin and Pascal Tardif (the Cemagref) for field work, to Ulrich Ulmer (the WSL) and to the Swiss Federal Research Institute WSL for providing the Swiss National Forest Inventory data, to Renzo Motta (the University of Turin) for providing the Italian plot data, to Bernard Ycart (the Institute of Applied Mathematics of Grenoble) for mathematical help, and to Julian C. Fox (the University of Melbourne) for english editing. This work was supported by the Grenoble Cemagref, the French National Forest Office and by the French Ministry of Agriculture and Fisheries.

REFERENCES

- Ayer M., Brunk H.D., Ewing G.M., Reid W.T., and Silverman E., 1955. An empirical distribution function for sampling with incomplete information. *Ann. Math. Stat.* 26: 641–647.
- Bigler C. and Bugmann H., 2003. Growth-dependent tree mortality models based on tree-rings. *Can. J. For. Res.* 33: 210–221.
- Bugmann H., 1994. On the ecology of mountainous forests in a changing climate: a simulation study. Ph.D. thesis, Swiss federal institute of technology, Zürich.
- Canham C.D., Papaik M.J., and Latty E.F., 2001. Interspecific variation in susceptibility to windthrow as a function of tree size and storm severity for northern temperate tree species. *Can. J. For. Res.* 31: 1–10.
- Clark J.S., 1996. Testing disturbance theory with long-term data: Alternative life-history solutions to the distribution of events. *Am. Nat.* 148: 976–996.
- Coomes D.A., Duncan R.P., Allen R.B., and Truscott J., 2003. Disturbances prevent stem size-density distributions in natural forests from following scaling relationships. *Ecol. Lett.* 6: 980–989.
- Courbaud B., de Coligny F., and Cordonnier T., 2003. Simulating radiation distribution in a heterogeneous Norway spruce forest on a slope. *Agric. For. Meteorol.* 116: 1–18.
- Das A., Battles J., van Mantgem P.J., and Stephenson N.L., 2008. Spatial elements of mortality risk in old-growth forests. *Ecology* 89: 1744–1756.
- Dobbertin M., 2005. Tree growth as indicator of tree vitality and of tree reaction to environmental stress: a review. *Eur. J. For. Res.* 124: 319–333.
- Dovčiak M., Hrivnák R., Ujházy K., and Gömöry D., 2008. Seed rain and environmental controls on invasion of *Picea abies* into grassland. *Plant Ecol.* 194: 135–148.
- Eid T. and Tuhus E., 2001. Models for individual tree mortality in Norway. *For. Ecol. Manag.* 154: 69–84.
- Fortin M., Bedard S., DeBlois J., and Meunier S., 2008. Predicting individual tree mortality in northern hardwood stands under uneven-aged management in southern Quebec, Canada. *Ann. For. Sci.* 65: 205.
- Franklin J.F., Shugart H.H., and Harmon M.E., 1987. Tree death as an ecological process. *BioScience* 550–556.
- Fridman J. and Valinger E., 1998. Modelling probability of snow and wind damage using tree, stand, and site characteristics from *Pinus sylvestris* sample plots. *Scan. J. For. Res.* 13: 348–356.
- Gower S.T., McMurtrie R.E., and Murty D., 1996. Aboveground net primary production decline with stand age: Potential causes. *Trends Ecol. Evol.* 11: 378–382.
- Grassi G. and Bagnaresi U., 2001. Foliar morphological and physiological plasticity in *Picea abies* and *Abies alba* saplings along a natural light gradient. *Tree Physiol.* 21: 959–967.
- Hansen E.M., Bentz B.J., Munson A.S., Vandygriff J.C., and Turner D.L., 2006. Evaluation of funnel traps for estimating tree mortality and associated population phase of spruce beetle in Utah. *Can. J. For. Res.* 36: 2574–2584.
- Harcombe P.A., 1987. Tree life table. *Bioscience* 37: 557–568.
- Hawkes C., 2000. Woody plant mortality algorithms: description, problems and progress. *Ecol. Model.* 126: 225–248.
- Hubbard R.M., Bond B.J., and Ryan M.G., 1999. Evidence that hydraulic conductance limits photosynthesis in old *Pinus ponderosa* trees. *Tree Physiol.* 19: 165–172.
- Ihaka R. and Gentleman R., 1996. R: A Language for Data Analysis and Graphics. *J. Comp. Graph. Stat.* 5: 299–314.
- Kobe R.K. and Coates K.D., 1997. Models of sapling mortality as a function of growth to characterize interspecific variation in shade tolerance of eight tree species of northwestern British Columbia. *Can. J. For. Res.* 27: 227–236.
- Kobe R.K., Pacala S.W., and Silander J.A., 1995. Juvenile tree survivorship as a component of shade tolerance. *Ecol. Appl.* 5: 517–532.
- Korzukhin M.D. and Ter-Mikaelian M.T., 1995. An individual tree-based model of competition for light. *Ecol. Model.* 79: 221–229.
- Kunstler G., Curt T., Bouchaud M., and Lepart J., 2005. Growth, mortality, and morphological response of European beech and downy oak along a light gradient in sub-Mediterranean forest. *Can. J. For. Res.* 35: 1657–1668.
- Lavine M., 1991. Problems in Extrapolation Illustrated with Space-Shuttle O-Ring Data. *J. Am. Stat. Assoc.* 86: 919–921.
- Lee Y.J., 1971. Predicting mortality for even-aged stands of lodgepole pine. *For. Chron.* 47: 29–32.
- Lexer M.J. and Hönninger K., 2001. A modified 3D-patch model for spatially explicit simulation of vegetation composition in heterogeneous landscape. *For. Ecol. Manage.* 144: 43–65.
- Lin J., Harcombe P.A., and Fulton M.R., 2001. Characterizing shade tolerance by the relationship between mortality and growth in tree saplings in a southeastern Texas forest. *Can. J. For. Res.* 31: 345–349.
- Lundstrom T., Jonas T., Stockli V., and Ammann W., 2007. Anchorage of mature conifers: Resistive turning moment, root-soil plate geometry and root growth orientation. *Tree Physiol.* 27: 1217–1227.
- MacFarlane D.W., Green E.J., Brunner A., and Burkhart H.E., 2002. Predicting survival and growth rates for individual loblolly pine trees from light capture estimates. *Can. J. For. Res.* 32: 1970–1983.
- Monserud R.A., 1976. Simulation of forest tree mortality. *For. Sci.* 22: 438–444.
- Monserud R.A. and Sterba H., 1999. Modeling individual tree mortality for Austrian forest species. *For. Ecol. Manage.* 113: 109–123.
- Moore J.A., Hamilton D.A., Xiao Y., and Byrne J., 2004. Bedrock type significantly affects individual tree mortality for various conifers in the inland Northwest, USA. *Can. J. For. Res.* 34: 31–42.
- Muller-Landau H.C., Condit R.S., Chave J., Thomas S.C., Bohlman S.A., Bunyavejchewin S., Davies S., Foster R., Gunatilleke S., Gunatilleke N., Harms K.E., Hart T., Hubbell S.P., Itoh A., Kassim A.R., LaFrankie J.V., Lee H.S., Losos E., Makana J.R., Ohkubo T., Sukumar R., Sun I.F., Supardi N.M.N., Tan S., Thompson J., Valencia R., Munoz G.V., Wills C., Yamakura

- T., Chuyong G., Dattaraja H.S., Esufali S., Hall P., Hernandez C., Kenfack D., Kiratiprayoon S., Suresh H.S., Thomas D., Vallejo M.I., and Ashton P., 2006. Testing metabolic ecology theory for allometric scaling of tree size, growth and mortality in tropical forests. *Ecol. Lett.* 9: 575–588.
- Nishimura T.B., 2006. Successional replacement mediated by frequency and severity of wind and snow disturbances in a *Picea-Abies* forest. *J. Veg. Sci.* 17: 57–64.
- Pacala S.W., Canham C., Saponara J., Silander J.A., Kobe R.K., and Ribbens E., 1996. Forest models defined by field measurements: estimation, error analysis and dynamics. *Ecol. Monogr.* 66: 1–43.
- Pacala S.W. and Rees M., 1998. Models suggesting field experiments to test two hypotheses explaining successional diversity. *Am. Nat.* 152: 729–737.
- Papaik M.J. and Canham C.D., 2006. Species resistance and community response to wind disturbance regimes in northern temperate forests. *J. Ecol.* 94: 1011–1026.
- Peet R.K. and Christensen N.L., 1987. Competition and tree death. *BioScience* 37: 586–595.
- Peltola H., Kellomaki S., Vaisanen H., and Ikonen V.P., 1999. A mechanistic model for assessing the risk of wind and snow damage to single trees and stands of Scots pine, Norway spruce, and birch. *Can. J. For. Res.* 29: 647–661.
- Rees M., Condit R., Crawley M., Pacala S., and Tilman D., 2001. Long-term studies of vegetation dynamics. *Science* 293: 650–655.
- Sagnard F., Pichot C., Dreyfus P., Jordano P., and Fady B., 2007. Modelling seed dispersal to predict seedling recruitment: recolonization dynamics in a plantation forest. *Ecol. Model.* 203: 464–474.
- Schütz J.-P., 1969. Etude des phénomènes de la croissance en hauteur et en diamètre du sapin (*Abies alba* Mill.) et de l'épicéa (*Picea abies* Karst.) dans deux peuplements jardinés et une forêt vierge. Ph.D. thesis, École Polytechnique Fédérale Zurich, Zurich.
- Stokes A., Salin F., Kokutse A.D., Berthier S., Jeannin H., Mochan S., Dorren L., Kokutse N., Abd Ghani M., and Fourcaud T., 2005. Mechanical resistance of different tree species to rockfall in the French Alps. *Plant Soil* 278: 107–117.
- Tilman D., 1994. Competition and biodiversity in spatially structured habitats. *Ecology* 75: 2–16.
- Ulmer U., 2006. Schweizerisches Landesforstinventar LFI. Datenbankauszug der Erhebungen 1983–85 und 1993–95 vom 30. Mai 2006. Technical report, WSL, Eidg. Forschungsanstalt WSL, Birmensdorf.
- Uriarte M., Canham C.D., Thompson J., and Zimmerman J.K., 2004. A neighborhood analysis of tree growth and survival in a hurricane-driven tropical forest. *Ecol. Monogr.* 74: 591–614.
- Valinger E. and Fridman J., 1997. Modelling probability of snow and wind damage in Scots pine stands using tree characteristics. *For. Ecol. Manage.* 97: 215–222.
- Vieilledent G., Courbaud B., Kunstler G., Dhote J.F., and Clark J.S., 2009. Biases in the estimation of size-dependent mortality models: advantages of a semiparametric approach. *Can. J. For. Res.* 39: 1430–1443.
- Wasser B. and Frehner M., 1996. Soins minimaux pour les forêts à fonction protectrice. Office Central Fédéral des Imprimés et du Matériel, Berne.
- Worrall J.J., Lee T.D., and Harrington T.C., 2005. Forest dynamics and agents that initiate and expand canopy gaps in *Picea-Abies* forests of Crawford Notch, New Hampshire, USA. *J. Ecol.* 93: 178–190.
- Wunder J., Reineking B., Matter J.F., Bigler C., and Bugmann H., 2007. Predicting tree death for *Fagus sylvatica* and *Abies alba* using permanent plot data. *J. Veg. Sci.* 18: 525–534.
- Wyckoff P.H. and Clark J.S., 2000. Predicting tree mortality from diameter growth: a comparison of maximum likelihood and Bayesian approaches. *Can. J. For. Res.* 30: 156–167.
- Wyckoff P.H. and Clark J.S., 2002. The relationship between growth and mortality for seven co-occurring tree species in the southern Appalachian Mountains. *J. Ecol.* 90: 604–615.
- Yao X.H., Titus S.J., and MacDonald S.E., 2001. A generalized logistic model of individual tree mortality for aspen, white spruce, and lodgepole pine in Alberta mixedwood forests. *Can. J. For. Res.* 31: 283–291.
- Zolubas P., 2003. Spruce Bark Beetle (*Ips typographus* L.) Risk based on individual tree parameters. In: IUFRO (Ed.), Forest insect population dynamics and host influences, Kanazawa, pp. 96–97.