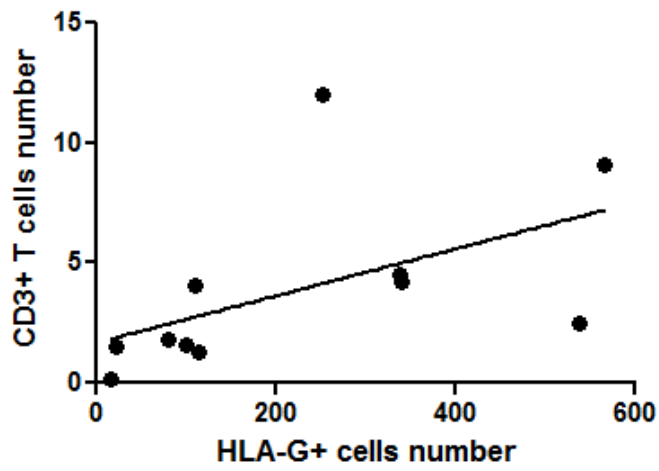


Supplementary Fig. 1



Supplementary Fig. 1.

Correlation between the number of HLA-G+ cell and the number of CD3+T cells according to the Spearman test ($r = 0.7273$, $p < 0.05$, $n = 11$)

Supplementary Fig. 2

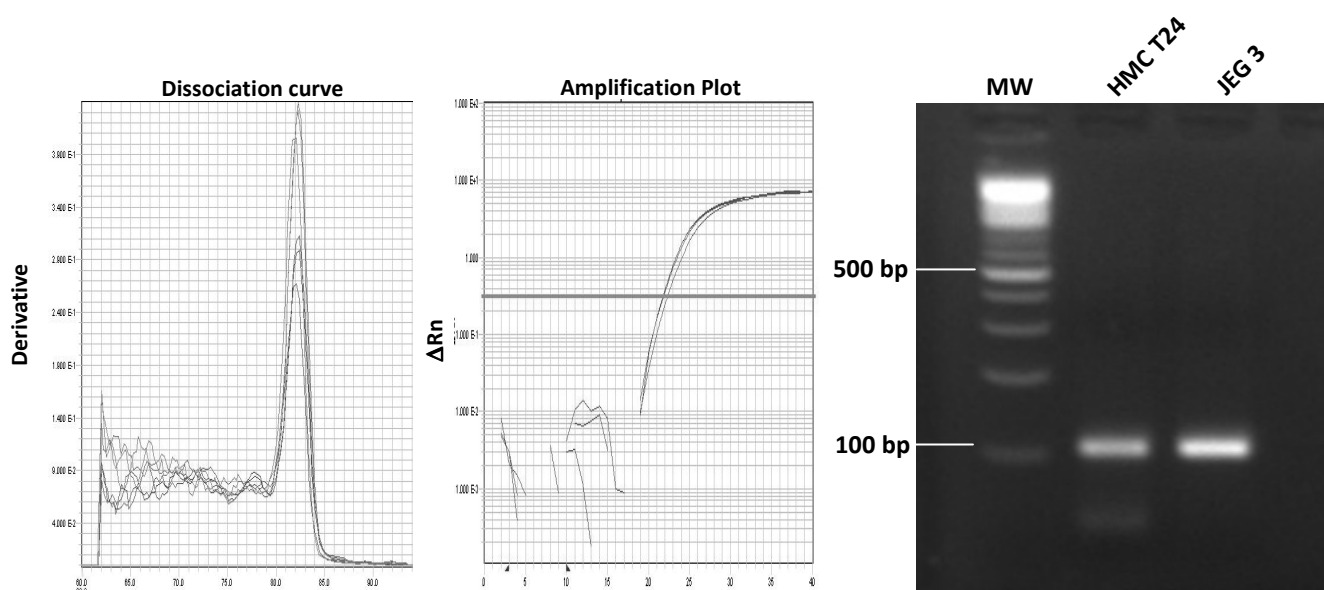
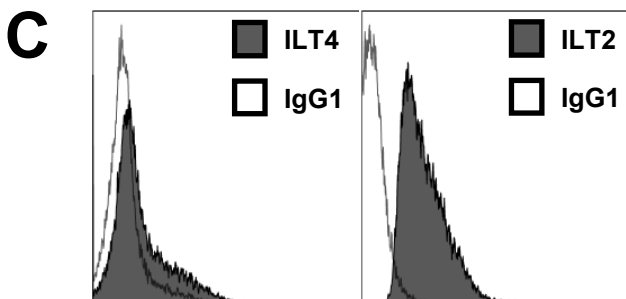
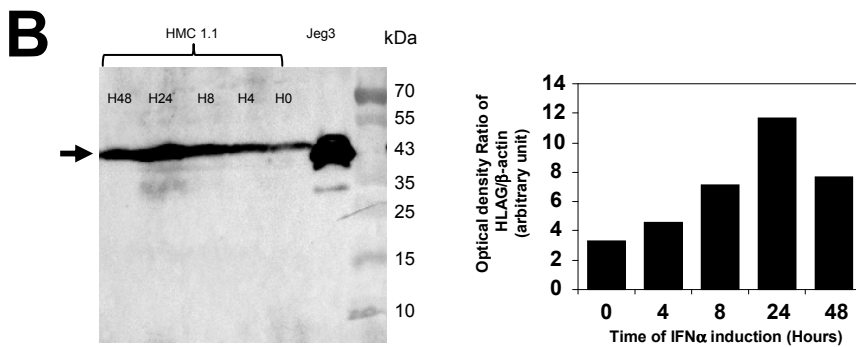
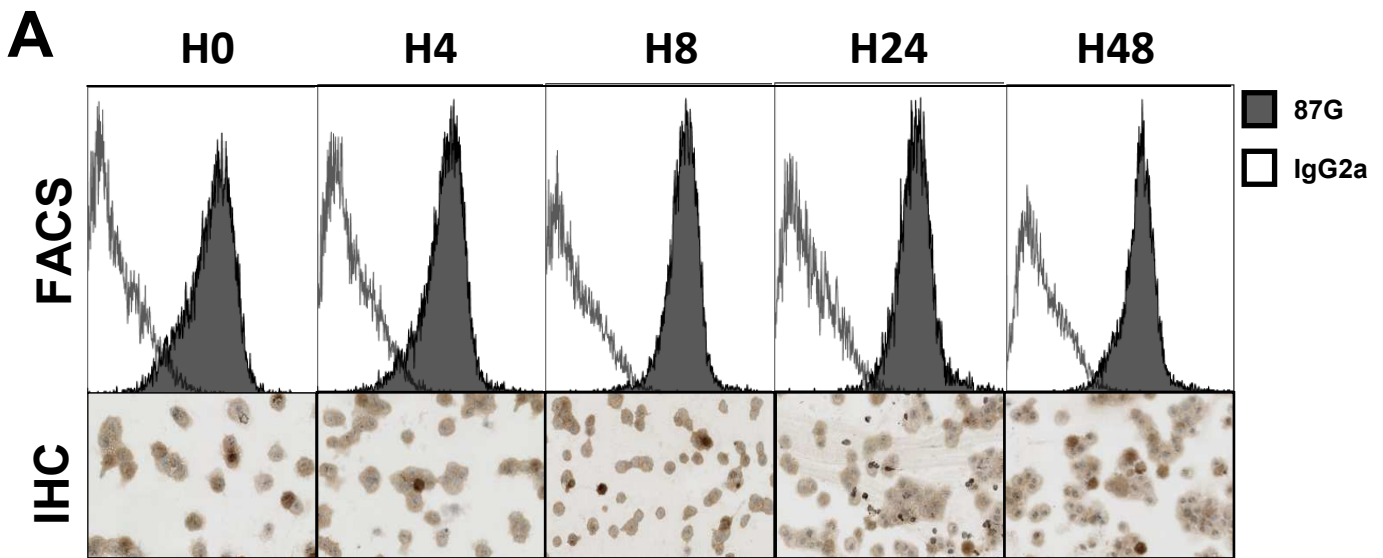


Figure S2:

A representative real time PCR experiment for HLA-G is represented with the dissociation curve, the amplification plot and the migration of the PCR products on a 2% agarose gel. The sequences of PCR primers designed using primer 3 software are: forward primer 5': CGG AGTATTGGGAAGAGGAG 3' and reverse primer 5'GCCTCGCTCTGGTTGTAGTAG3'.

The expected size of the amplicon is 136 bp. The samples are HMC1.1 after 24h of IFN- α stimulation and the HLA-G-positive cell line Jeg3. The dissociation curve shows a single dissociation peak, demonstrating the specificity of the primers. The amplification curve shows an early amplification with a Ct=21.42 for HMC1.1 T24 and a Ct=21.03 for Jeg3. The migration gel shows the same migration of HMC1.1 T 24 and Jeg3 with a band at expected size.

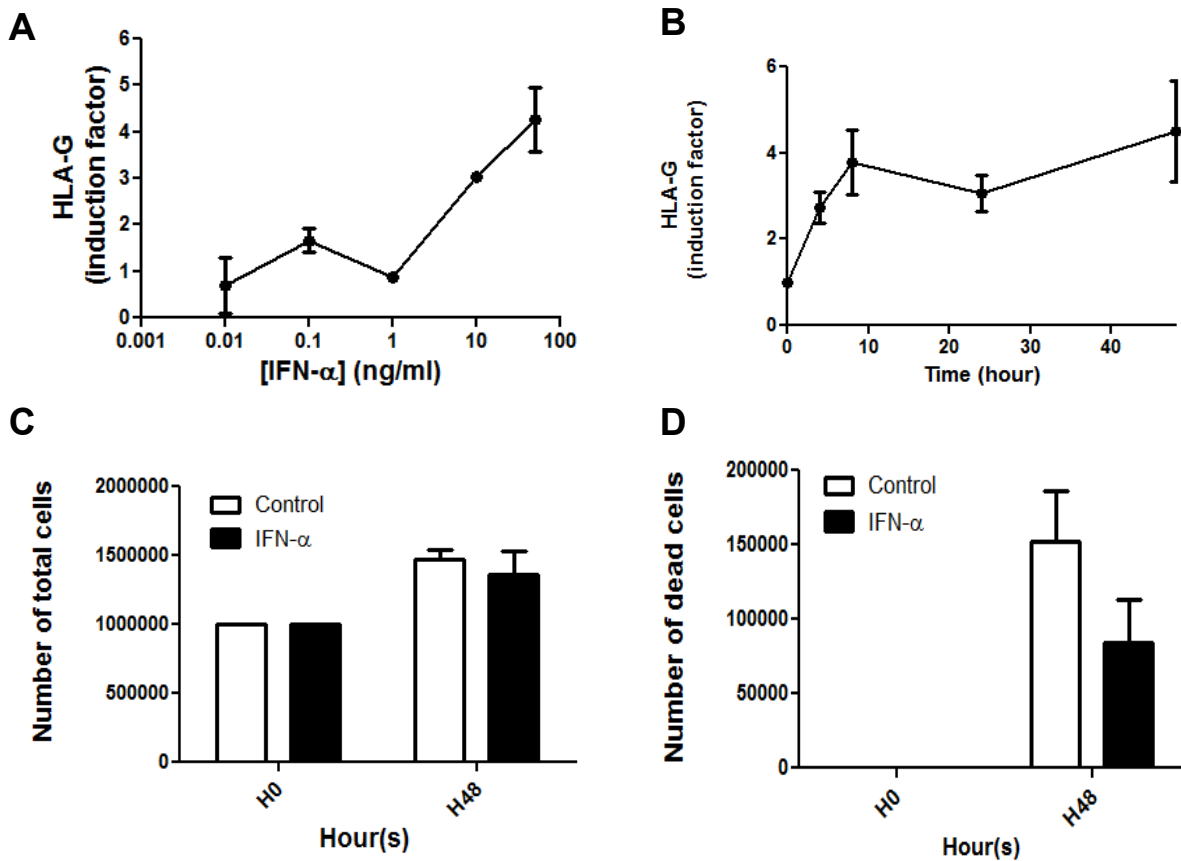


Supplementary Fig. 3.

Expression of HLA-G, ILT2 and ILT4 by the human mast cell, HMC1.1.

- (A) Representative overlay plot of HLA-G expression (n= 2) using flow cytometry (FACS) and representative immunohistochemistry (IHC) with 87G at the different time of stimulation (H0, H4, H8, H24, H48) with IFN- α (50ng/ml).
- (B) Representative Western Blot analysis of HMC1.1 cells with 4H84 compared to Jeg 3, used as positive control. Bands corresponding to HLA-G1 are observed at the different time of stimulation (H0, H4, H8, H24, H48) with IFN- α (50ng/ml). Densitometry analysis of HLA-G1 expression as well as β -actin used as a control of protein loading was carried out and expressed in arbitrary units.
- (C) Representative overlay plots of ILT2 and ILT4 (n= 3) using flow cytometry with ILT2 and ILT4 and their respective controls IgG2a and IgG1.

Supplementary Fig. 4.



Supplementary Fig. 4.

(A) Dose response curve of HLA-G secretion in conditioned media from HMC1.1 cultures stimulated with IFN- α . The control (CTRL) corresponding to the cell line before any stimulation is assigned a value of 1. The x-values represent the concentration of IFN- α in ng/ml.

(B) Kinetic study of HLA-G secretion into conditioned media from HMC1.1 cultures stimulated with IFN- α ; the x-axis represent the time of stimulation expressed in hours i.e. 4h, 8h, 24h, and 48h.