



**HAL**  
open science

## A complex set of sex pheromones identified in the cuttlefish *Sepia officinalis*.

Jérémy Enault, Céline Zatylny-Gaudin, Benoît Bernay, Benjamin Lefranc, Jérôme Leprince, Michèle Baudy-Floc'H, Joël Henry

### ► To cite this version:

Jérémy Enault, Céline Zatylny-Gaudin, Benoît Bernay, Benjamin Lefranc, Jérôme Leprince, et al.. A complex set of sex pheromones identified in the cuttlefish *Sepia officinalis*.. PLoS ONE, 2012, 7 (10), pp.e46531. 10.1371/journal.pone.0046531 . hal-00870790

**HAL Id: hal-00870790**

**<https://hal.science/hal-00870790v1>**

Submitted on 8 Oct 2013

**HAL** is a multi-disciplinary open access archive for the deposit and dissemination of scientific research documents, whether they are published or not. The documents may come from teaching and research institutions in France or abroad, or from public or private research centers.

L'archive ouverte pluridisciplinaire **HAL**, est destinée au dépôt et à la diffusion de documents scientifiques de niveau recherche, publiés ou non, émanant des établissements d'enseignement et de recherche français ou étrangers, des laboratoires publics ou privés.

# A Complex Set of Sex Pheromones Identified in the Cuttlefish *Sepia officinalis*

Jérémy Enault<sup>1</sup>, Céline Zatylny-Gaudin<sup>1</sup>, Benoît Bernay<sup>2</sup>, Benjamin Lefranc<sup>3</sup>, Jérôme Leprince<sup>3</sup>, Michèle Baudy-Floc'h<sup>4</sup>, Joël Henry<sup>1,2\*</sup>

**1** FRE CNRS 3484 BIOMEA, Biologie des Mollusques Marins et des Ecosystèmes Associés, Université de Caen Basse-Normandie, Caen, France, **2** Post Genomic platform PROTEOGEN, Université de Caen Basse-Normandie, IFR ICORE 146, Caen, France, **3** INSERM U982, Différenciation et Communication Neuronale et Neuroendocrine, PRIMACEN, IFRMP23, Université de Rouen, Mont-Saint-Aignan, France, **4** UMR CNRS 6226, Ciblage et Auto-Assemblages Fonctionnels, Sciences Chimiques de Rennes, Université de Rennes I, Av. du Général Leclerc, Rennes, France

## Abstract

**Background:** The cephalopod mollusk *Sepia officinalis* can be considered as a relevant model for studying reproduction strategies associated to seasonal migrations. Using transcriptomic and peptidomic approaches, we aim to identify peptide sex pheromones that are thought to induce the aggregation of mature cuttlefish in their egg-laying areas.

**Results:** To facilitate the identification of sex pheromones, 576 5'-expressed sequence tags (ESTs) were sequenced from a single cDNA library generated from accessory sex glands of female cuttlefish. Our analysis yielded 223 unique sequences composed of 186 singletons and 37 contigs. Three major redundant ESTs called SP $\alpha$ , SP $\alpha'$  and SP $\beta$  were identified as good candidates for putative sex pheromone transcripts and are part of the 87 unique sequences classified as unknown. The alignment of translated SP $\alpha$  and SP $\alpha'$  revealed a high level of conservation, with 98.4% identity. Translation led to a 248-amino acid precursor containing six peptides with multiple putative disulfide bonds. The alignment of SP $\alpha$ - $\alpha'$  with SP $\beta$  revealed a partial structural conservation, with 37.3% identity. Translation of SP $\beta$  led to a 252-amino acid precursor containing five peptides. The occurrence of a signal peptide on SP $\alpha$ , SP $\alpha'$  and SP $\beta$  showed that the peptides were secreted. RT-PCR and mass spectrometry analyses revealed a co-localization of transcripts and expression products in the oviduct gland. Preliminary *in vitro* experiments performed on gills and penises revealed target organs involved in mating and ventilation.

**Conclusions:** The analysis of the accessory sex gland transcriptome of *Sepia officinalis* led to the identification of peptidic sex pheromones. Although preliminary functional tests suggested the involvement of the  $\alpha 3$  and  $\beta 2$  peptides in ventilation and mating stimulation, further functional investigations will make it possible to identify the complete set of biological activities expected from waterborne pheromones.

**Citation:** Enault J, Zatylny-Gaudin C, Bernay B, Lefranc B, Leprince J, et al. (2012) A Complex Set of Sex Pheromones Identified in the Cuttlefish *Sepia officinalis*. PLoS ONE 7(10): e46531. doi:10.1371/journal.pone.0046531

**Editor:** Shoba Ranganathan, Macquarie University, Australia

**Received:** January 24, 2012; **Accepted:** September 5, 2012; **Published:** October 30, 2012

**Copyright:** © 2012 Enault et al. This is an open-access article distributed under the terms of the Creative Commons Attribution License, which permits unrestricted use, distribution, and reproduction in any medium, provided the original author and source are credited.

**Funding:** This work was supported by a Ph.D. grant of the "Comité Régional de Basse-Normandie". The funders had no role in study design, data collection and analysis, decision to publish, or preparation of the manuscript.

**Competing Interests:** The authors have declared that no competing interests exist.

\* E-mail: joel.henry@unicaen.fr

## Background

The French cuttlefish *Sepia officinalis* is a nectobenthic cephalopod that performs horizontal migrations [1]. During reproduction, which takes place after a two-month long migration from winter areas, cuttlefish aggregate in specific mating and spawning coastal areas.

In most molluscs, chemical cues are important for social communication [2]. Chemical communication in cuttlefish was demonstrated by Boal and collaborators [3], [4], using Y-mazes.

The occurrence of chemical messengers released by the genital apparatus and by the egg mass has long been thought to explain the aggregation observed between April and June [4]. Ovarian regulatory peptides that stimulate oviduct and accessory sex gland contractions have already been identified in *Sepia officinalis* [5][6][7][8][9].

We demonstrated that *Sepia* oocytes were responsible for the expression and secretion of waterborne regulatory peptides released in the genital tract during oocyte transport and in the mantle cavity during egg capsule secretion. These peptides modulate the contractions of the oviduct during ovulation and when they reach the mantle cavity (along with the oocytes), they induce the release of secretions corresponding to egg capsule targeting the oviduct gland and main nidamental glands. The low molecular mass of these peptides (500–1,500 Da), and the absence of disulfide bonds combined with the absence of N and C-terminal protections, result in low structural stability and a short half-life in natural environments.

But messengers implied in behavioral modifications and in the stimulation of mating and of gamete release could be large peptides or polypeptides, as already described in the marine gastropod *Aplysia* [10][11][12].

Indeed, field studies [13][14][15][16][17] have shown that *Aplysia* are solitary animals most of the year, but move into breeding aggregations during the reproductive season when they mate and lay eggs. After ovulation, the albumen gland wraps eggs into a long, string-like cordon that has a high surface-to-volume ratio. These egg cordons are a source of both waterborne and contact pheromones that attract mates and induce mating and egg-laying [11][17][18].

A waterborne pheromonal attractant (attractin) was first isolated from eluates of *Aplysia californica* egg cordons and characterized [11]. It is a 58-residue peptide with a single N-glycosylation and three intra-chain disulfide bonds [17][19][20]. Although the precursor contains a single copy of attractin [21], its transcripts and its expression products are very abundant in the albumen gland where they reach 20% of the transcripts [22].

Moreover, T-maze assays showed that attractin acted as part of a bouquet of waterborne odors [11][21] composed of enticin (7.7 kDa) [22], temptin (10.9 kDa) [22] and seductin (28.9 kDa) [23].

In *Sepia officinalis*, mating is a stereotyped behavior during which spermatophores are deposited by males into a copulatory pouch that is located below the females' beak and stores sperm prior to fertilization. The oviduct gland and the main nidamental glands, which play the same role as the albumen gland in *Aplysia*, secrete two layers of capsule that embed oocytes during egg-laying just before fertilization.

In the present study, our investigations focused on the identification and the characterization of peptides and polypeptides involved both in mature adult aggregations on coastal egg-laying areas and in mating stimulation. A cDNA library was created from oviduct glands and main nidamental glands and yielded 576 expressed sequence tags (ESTs) that allowed us to identify the main expression products secreted during egg-laying on the basis of clone redundancy and signal peptide occurrence.

## Results

### Reproduction stage-specific cDNA library, EST assembly and Assignment of putative gene functions using Gene Ontology

A directional cDNA library was created from the accessory sex glands of three adult females.

A total of 576 randomly selected clones were single-pass sequenced from the 5' end, then pre-processed to remove poor-quality sequences and cloning-vector sequences. Finally, 560 high-quality ESTs ranging from 350 to 1,280 bp, with an average length of 975 bp, were obtained.

Redundant ESTs were assembled into overlapping contigs using CAP3 software, which yielded 223 unique sequences: 37 contigs and 186 singletons with a redundancy of about 66.7%. The results of the *in silico* analysis are summarized in tables 1 and 2.

The 223 EST unigene sequences were compared by BLASTX to various databases using the substitution matrix BLOSUM62 [24]. Using a cut-off expect-value of  $E < 10^{-3}$ , 136 sequences (61%) were found to match with reported sequences and 87 (39%) were classified as unknown. 11 sequences (5%) were highly similar to cephalopod genes identified from the genera *Sepia*, *Loligo*, *Octopus*, *Ommastrephes* and *Enteroctopus*.

As the main expression products of accessory sex glands are extracellular secreted proteins, the occurrence of signal peptides was checked and yielded 56 (25%) unique secreted sequences.

Sixty-two percent of the contigs were assembled from two ESTs and 13% from more than five ESTs. Two contigs were assembled

**Table 1.** General characteristics of *Sepia officinalis* accessory sex gland ESTs.

Total number of <b>sequenced</b> cDNA	<b>576</b>
Number of high quality ESTs <sup>a</sup>	<b>560</b>
Average length of high quality ESTs (bp)	<b>974.6</b>
Number of contigs <sup>b</sup>	<b>37</b>
Number of ESTs in contigs	<b>374</b>
Number of singletons <sup>c</sup>	<b>186</b>
Redundancy <sup>d</sup>	<b>66.7%</b>

<sup>a</sup>length of sequences used for comparison after editing (<100-bp et N-rich inserts were excluded).

<sup>b</sup>ESTs with minimum 90% identity over 100-bp region were clustered together, forming a cluster.

<sup>c</sup>that did not sufficiently match any sequence in the data set to allow assembly.

<sup>d</sup>number of ESTs assembled in clusters/total ESTs.

doi:10.1371/journal.pone.0046531.t001

from over 10 ESTs: one coding for a glutathione S-transferase and one for procollagen type XII  $\alpha$ -1.

Among the 136 identified sequences, 133 were successfully processed by Blast2GO and then associated to putative functions (figure 1).

GO annotations fall into three independent categories : Biological process, Molecular function, and Cellular component. As shown in figure 1A, 43% of annotated ESTs were associated to «biological process» versus 33% to «cellular components» and 24% to «molecular functions».

In the “molecular functions” category (figure 1B), ESTs displaying a binding function (45%) predominated, followed by those displaying a catalytic activity (25%). In the “biological process” category (figure 1C), ESTs involved in cellular process and metabolic process were predominant (46%).

The “reproduction” group contributed to a total of approximately 1% of the total number of identified GO terms.

In the “cellular component” category (figure 1D), ESTs functionally involved in the cell predominated (41%), followed by those functionally displayed in organelles (34%). It should be noted that most of this category consists of the diverse sub-units of ribosomal proteins which are represented by 20 unique sequences.

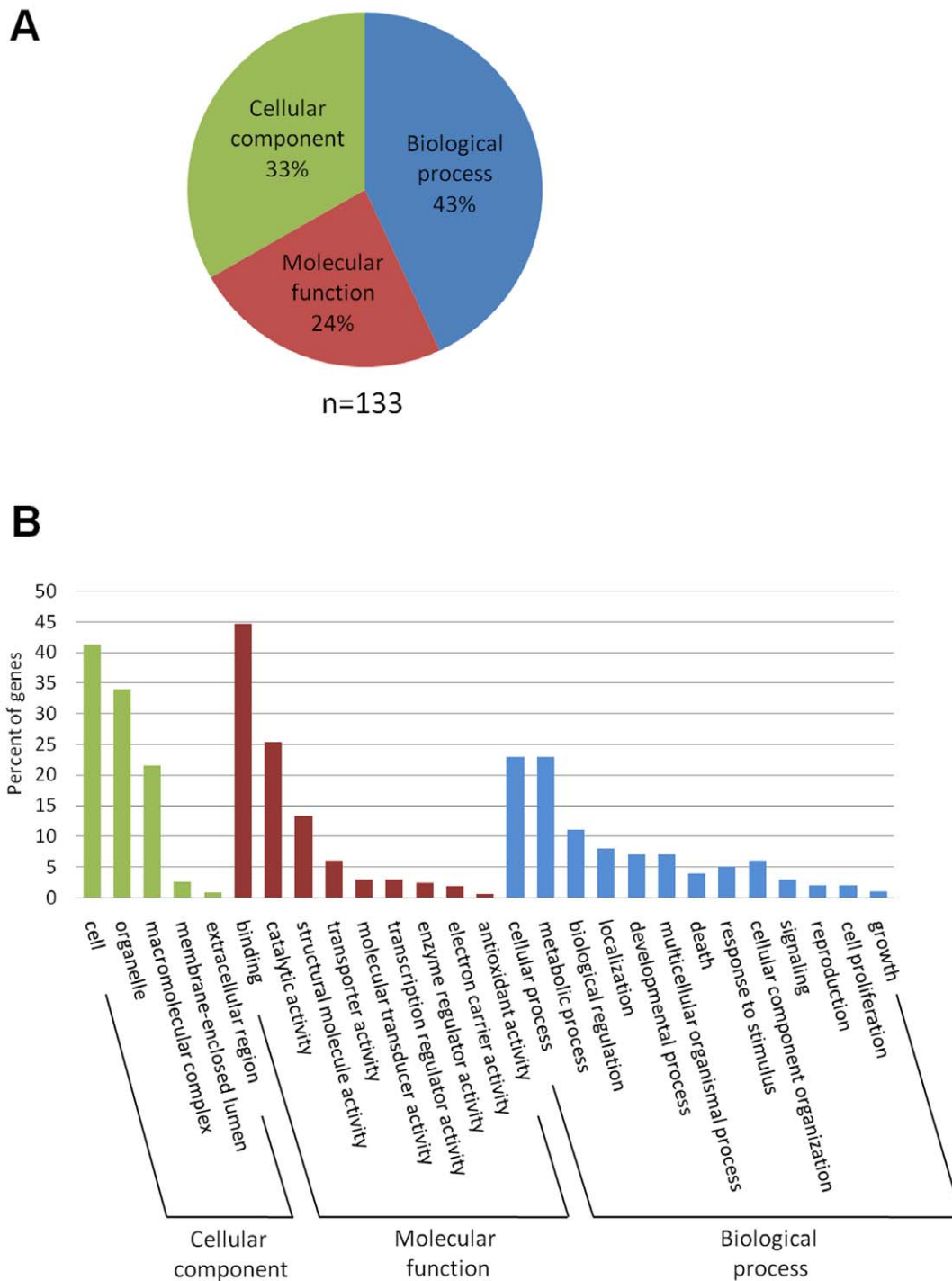
### Identification of sex pheromone ESTs

The identification of good candidates for sex pheromone transcripts was based on three main criteria corresponding to

**Table 2.** BLASTX searches and analyses for the collection of *Sepia officinalis* contigs and singletons.

Number of unique sequences	<b>223</b>
Number of unique sequences with BLASTX hits	<b>129</b> (57.8%)
Number of unique sequences with predicted signal peptides	<b>56</b> (25.1%)
Number of contigs containing :	
2 ESTs	<b>23</b>
3 ESTs	<b>5</b>
4 ESTs	<b>3</b>
5 ESTs	<b>1</b>
>6 ESTs	<b>5</b>

doi:10.1371/journal.pone.0046531.t002



**Figure 1. Functional categories by Gene Ontology analysis of the sex accessory gland sequences.** (A) 133 sequences out of a total of 560 sequences; not all unigenes could be annotated and some received multiple annotations. (B) Comparison of different percentages in each GO sub-category is represented in all categories.  
doi:10.1371/journal.pone.0046531.g001

sex pheromones described in *Aplysia* [19][22]: transcript redundancy, occurrence of a signal peptide and structure of the putative expression products. Out of 560 high quality ESTs, 168 were identified by Blast and 392 were considered as unknown. 68% of the unknown ESTs (268) corresponded to 3 major redundant ESTs leading to three proteic precursors called SP $\alpha$  (66 ESTs,

11.8%), SP $\alpha'$  (65 ESTs, 11.6%) and SP $\beta$  (134 ESTs, 23.9%) (SP is for sex pheromones).

While SP $\alpha$  and SP $\alpha'$  shared a high level of homology (98.4% identity and 99.6% similarity), SP $\beta$  appeared to be partially conserved with only 37.3% identity and 56.7% similarity with SP $\alpha$ /SP $\alpha'$ . SP $\alpha$ , SP $\alpha'$  and SP $\beta$  are three related precursors



**Table 3.** Peptides resulting from dibasic cleavages of SP precursors.

SP Precursor	Primary sequences of putative expression products processed from dibasic cleavages	Putative post-translational modifications	Monoisotopic m/z
<b>SP<math>\alpha</math> SP<math>\alpha'</math></b>			
peptide $\alpha 1$	EIRSNVQKAEFQHRAARLLVSV	/	2551.42
peptide $\alpha 2$	YYAAGPVFTRWGNRCPYRSYRVYEGIMGGQDKTHRGGASNFLCLP	disulfide bond	5226.49
peptide $\alpha 3$	PTWANLKGGSQGLGLIYGTQYKLYPAHVNGFGLFITTHLKPNNHNDVPCAVC QVTKPATVLMIPa	C-terminal amidation and disulfide bond	6906.61
peptide $\alpha 3'$	PTWANLKGGSQGLGLIYGTQYKLYPSQVNG FGLFFQTHLKPNNHNDVPCAVCQVTKPATVLMIPa	C-terminal amidation and disulfide bond	6974.60
peptide $\alpha 4$	VCTPGWDLMYRGYLMSE	disulfide bond	2020.89
peptide $\alpha 5$	NNAGRMTYVCVD	disulfide bond	1342.59
peptide $\alpha 6$	PQVYWAGYLNENGATINHVESKCGSLPCPLYSNYKEVPCCVCSKCPi	disulfide bond	5171.37
<b>SP<math>\beta</math></b>			
peptide $\beta 1$	AEENKIQIQ	/	1072.56
peptide $\beta 2$	FTYPYVQVKIPGPGATYVIa	C-terminal amidation	2298.23
peptide $\beta 3$	CTSNDRVYTGYSYTAGQHYNHAGGGSNILCLPRFPVSDQITSTEN VASIFGVRIRIGSYNSLGTNGLFSTPNNISLN	N-glycosylation and disulfide bond	8256.97
peptide $\beta 4$	VVPCSVCLTNGSATIMVIPGRTHCYPGWYRQYSGYLMTAHYAHVGRSNHICVH	disulfide bond	5901.80
peptide $\beta 5$	PQRYFGTSPLQAFLYHVEAECGSLPCPPYCNFELPCVVCRKCP	disulfide bond	4913.27

doi:10.1371/journal.pone.0046531.t003

between SP $\alpha$  and SP $\alpha'$  is located in the 7 kDa peptide (64 amino acids) with two couples of substituted amino acids.

The 134 cDNA clones of SP $\beta$  contained an open reading frame that encoded a 252-amino acid protein precursor with a 34-residue signal sequence. The dibasic processing of the precursor yielded seven putative peptides ranging from 1.1 to 8.3 kDa, summarized in table 3. Among these putative peptides, only a 2.3-kDa one appeared to be C-terminally amidated.

### Tissue mapping

RT-PCR performed from male and female tissues revealed localization of SP transcripts restricted to female accessory sex glands. SP $\alpha$ , SP $\alpha'$  and SP $\beta$  were detected in the oviduct gland (figure 3).

A preliminary run of MALDI-TOF-MS analysis yielded several expected expression products ( $\beta 1$ ,  $\beta 2$  and  $\beta 4$  peptides) demonstrating a dibasic proteolytic processing of the precursors. The MS spectrum of the  $\beta 2$  peptide is shown in figure 4. In addition, the identity of the  $\beta 2$  peptide (m/z 2298.2) was confirmed by MS/MS and by screening the translated EST library of accessory sex glands.

Several m/z results corresponding to internal cleavages of the  $\alpha 3$  and  $\alpha 3'$  peptides demonstrated that the classical dibasic processing cleavages were followed by monobasic cleavages and by unusual cleavages leading to a set of N-terminally truncated peptides (table 4).

### Bioactivity of C-terminally amidated peptides

The biological activity of the  $\alpha 3$  and  $\beta 2$  peptides derived from SP $\alpha$  and SP $\beta$  respectively was checked using a myotropic bioassay. From as low as  $10^{-8}$  M, the synthetic replicate of peptide  $\beta 2$  induced a strong contraction of the gills of the two sexes (figure 5A) and an increase in the basal tonus of the penis (figure 5B) whereas

it had no effect when applied on the rectum of the two sexes (figure 5C), suggesting target specificity.

The synthetic replicate of peptide  $\alpha 3$  was active on the penis only. It increased the amplitude of contractions from as low as  $10^{-9}$  M (figure 5D).

### Discussion

Pheromones play an important role in the reproductive aggregation of marine invertebrate species. While they have been fully investigated in the marine gastropod *Aplysia* [16][19][20][22][26][27], very little is known about the reproductive behavior of cephalopods. In this context, this study unravels one of the mechanisms that induce reproduction migrations of *S. officinalis* living in the English Channel.

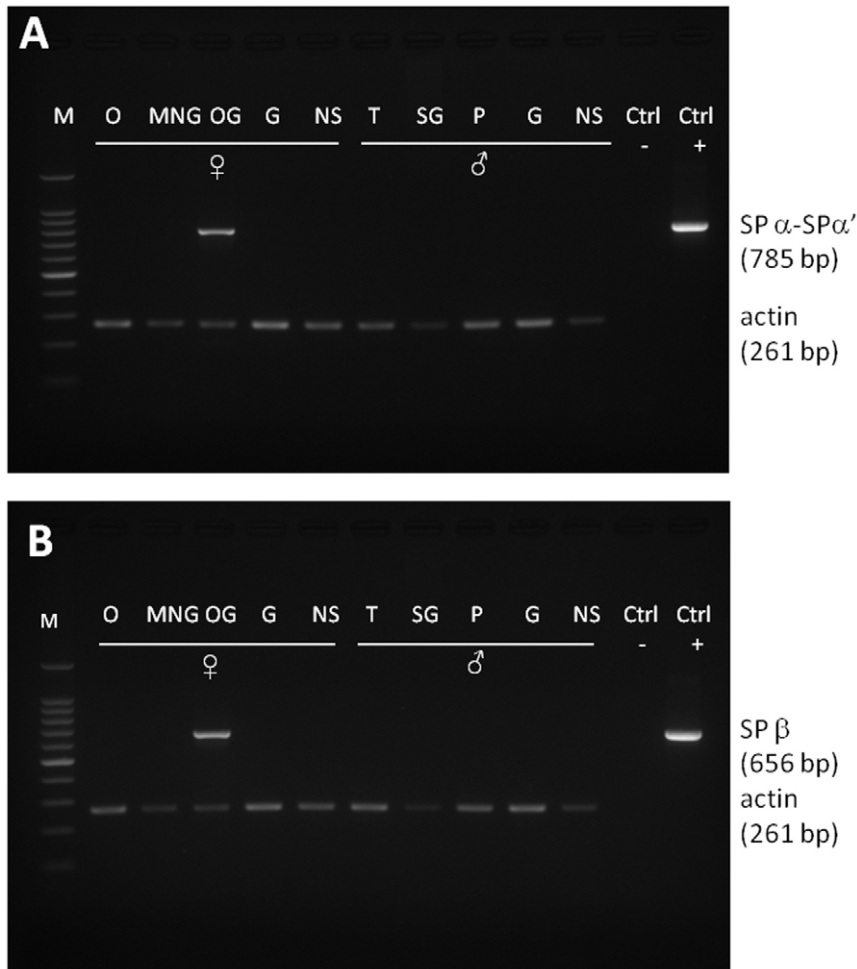
*Aplysia* and *Sepia* aggregations occur every year in specific coastal areas. In *Aplysia*, the cocktail of polypeptides released by the albumen gland (a female accessory sex gland that secretes the egg capsule) and by the egg cordons induces *Aplysia* gathering and stimulates their mating [17][22].

The occurrence of polypeptidic waterborne pheromones expressed and secreted by accessory sex glands was then highly suspected to account for the reproductive behavior of *S. officinalis*.

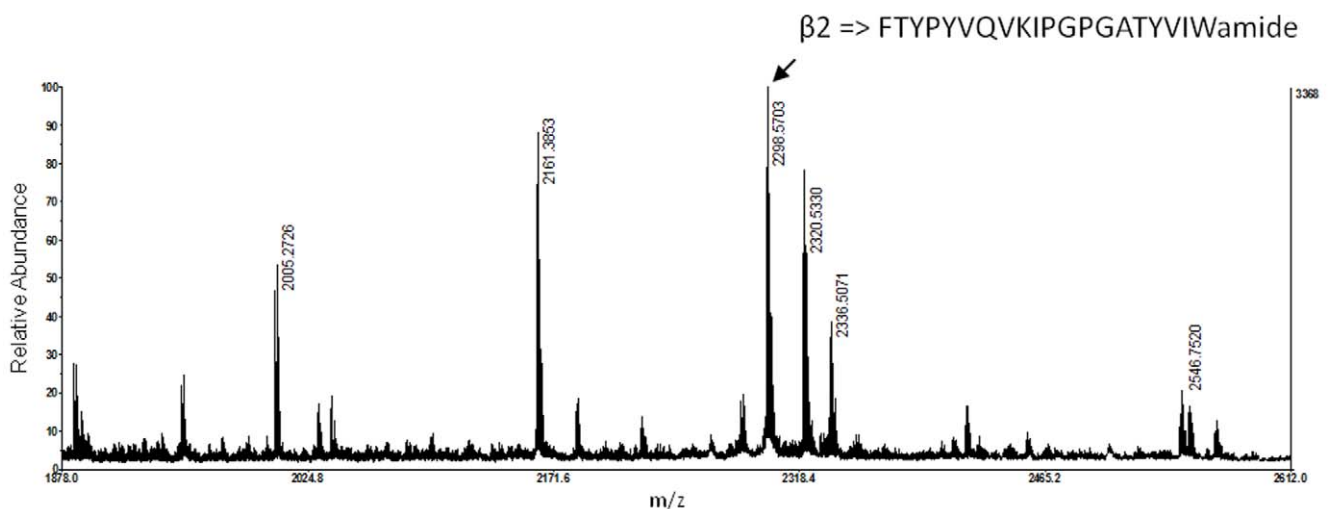
In order to identify large peptidic sex pheromones, we investigated the major transcripts of female *Sepia* accessory sex glands (which are physiologically similar to the albumen gland of *Aplysia*) expressing secreted peptides with a molecular mass over 2 kDa.

### General considerations about the EST strategy used in this work

Five hundred and seventy-six ESTs sequenced from a conventional cDNA library led to the identification of the main expression products. The ESTs were generated from accessory sex



**Figure 3. Tissue-specific patterns of expression for candidate pheromones assayed via reverse transcription PCR.** Expression patterns for SP $\alpha$ , SP $\alpha'$  and SP $\beta$  transcripts and actin were assayed from three females and three males. Gels (A) and (B) correspond to SP $\alpha$ - $\alpha'$  and SP $\beta$ , respectively. M, weight marker; O, ovary; MNG, main nidamental gland; OG, oviduct gland; G, gills; NS, nervous system; T, testis; SG, secondary glands; P, Penis; Ctrl-, negative control (no template added to PCR mix); Ctrl+, positive control (the template was a plasmid containing the insert of interest). doi:10.1371/journal.pone.0046531.g003



**Figure 4. MALDI-TOF MS spectrum of  $\beta$ 2 peptide recovered from the oviduct gland.** doi:10.1371/journal.pone.0046531.g004

**Table 4.** MALDI-TOF detected ions resulting from truncated  $\alpha 3$  and  $\alpha 3'$  peptides.

Designation	Primary sequences	Detected ion	Average m/z
truncated $\alpha 3$	WANLKGGSQLGGLIYGTQYKLYPAHVNGFGLFITTHLKPPHNHDV PCAVCQVTKPATVLMIPa	$4M^{3+}$	8977.8
truncated $\alpha 3$	NLKGGSQGLGGLIYGTQYKLYPAHVNGFGLFITTHLKPPHNHDVPC AVCQVTKPATVLMIPa	$4M^{3+}$	8604.6
truncated $\alpha 3$	GGSQLGGLIYGTQYKLYPAHVNGFGLFITTHLKPPHNHDVPCAVCQVTKPATVLMIPa	$M^+$	6100.4
truncated $\alpha 3$	LYPAHVNGFGLFITTHLKPPHNHDVPCAVCQVTKPATVLMIPa	$4M^{3+}$	6101.7
truncated $\alpha 3'$	WANLKGGSQLGGLIYGTQYKLYPSQVNGFGLFFQTHLKPPHNHDVPC AVCQVTKPATVLMIPa	$4M^{3+}$	9036.1
truncated $\alpha 3'$	LKGGSQLGGLIYGTQYKLYPSQVNGFGLFFQTHLKPPHNHDVPC VCQVTKPATVLMIPa	$M^+Na^+$	6429.5

doi:10.1371/journal.pone.0046531.t004

glands dissected during egg-laying, a specific narrow window of the life cycle, in order to focus on sex pheromones. These are the main expression products of the accessory sex glands during the short egg-capsule secretion period of marine mollusks such as *Aplysia* [19][22]. In *S. officinalis*, EST analysis demonstrated a similar phenomenon in a cephalopod for the first time, with 268 clones encoding sexual pheromones out of 560 usable clones. Moreover, secreted products appeared as the main part of the expression products with 56 unique sequences (25.1%) out of 223 and three of them, SP $\alpha$ , SP $\alpha'$  and SP $\beta$  representing 47.8% of the 560 sequenced clones. Quantitative analysis led to the conclusion that in egg-laying females most of the transcripts of accessory sex glands encoded secreted expression products.

In a similar study performed on male accessory sex glands of insects based on approximately 1,000 sequenced ESTs, gene ontology gave different results from ours concerning the ratio of molecular function categories (54% for *H. melpomene* versus 24% for *S. officinalis*), whereas the ratio of unique sequences encoding secreted peptides or proteins was similar (around 25%), as was the ratio of unknown unigenes (around one third of the total) [28].

### Sex pheromone precursors

Three major related transcripts encoding secreted peptides and expressed in the oviduct gland were identified. The similar SP $\alpha$  and SP $\alpha'$  precursors, diverging by only four amino acids in the  $\alpha 3$  and  $\alpha 3'$  peptides, yielded seven putative expression products ranging from 1.3 kDa (peptide  $\alpha 5$ ) to 7 kDa (peptides  $\alpha 3$  and  $\alpha 3'$ ). All peptides except  $\alpha 1$  contained at least one cysteine and two of them,  $\alpha 3$  and  $\alpha 3'$ , were C-terminally amidated like many bioactive peptides.

SP $\beta$  shared 56.7% similarity with SP $\alpha$  and SP $\alpha'$  and yielded five putative expression products ranging from 1.1 kDa (peptide  $\beta 1$ ) to 8.3 kDa (peptide  $\beta 3$ ), with C-terminal amidation (peptide  $\beta 2$ ), disulfide bonds (peptides  $\beta 3$ ,  $\beta 4$ ,  $\beta 5$ ) or N-glycosylation (peptide  $\beta 3$ ).

For most of the expression products derived from SP $\alpha$ - $\alpha'$  and SP $\beta$ , predicted post translational modifications such as C-terminal amidation, disulfide bonds or N-glycosylation could provide a strong protection against protease and peptidase activity and can be expected to confer the peptides a long life in marine environment. Thus, the processing of SP $\alpha$ - $\alpha'$  and SP $\beta$  should lead to the release of a cocktail of waterborne pheromones.

In *Aplysia*, aggregation during the reproduction period is induced by the release of four waterborne pheromones processed from four distinct protein precursors [20][21][22]. In *Sepia*, the pheromone cocktail appeared to be more complex with at least

nine putative pheromones resulting from dibasic cleavages (figure 2) and maybe more since peptides processed from internal cleavages of peptides  $\alpha 3$  and  $\alpha 3'$  were recovered by mass spectrometry. In accordance with these observations, a similar atypical processing was described for the Egg-laying hormone precursor in *Aplysia californica* [29].

Biological activity measured from the  $\beta 2$  and  $\alpha 3$  peptides, two C-terminally amidated peptides, revealed few targets such as the penis and gills as compared to the expected functions associated to sex pheromones, i.e. mating stimulation and hyperventilation. Similar activities were also obtained from the egg-conditioning medium, demonstrating a release of pheromones by the egg mass (unpublished data). Behavioral tests will have to be performed with the cocktail of recombinant pheromones to investigate attractiveness on mature cuttlefish.

### Conclusion

In the present study, sex pheromones have been clearly identified by the use of a transcriptomic approach associated to structural and abundance criteria for the selection of ESTs. Although some of the predicted expression products were recovered by MALDI-TOF MS, the processing of precursors is not fully elucidated and has yet to be investigated.

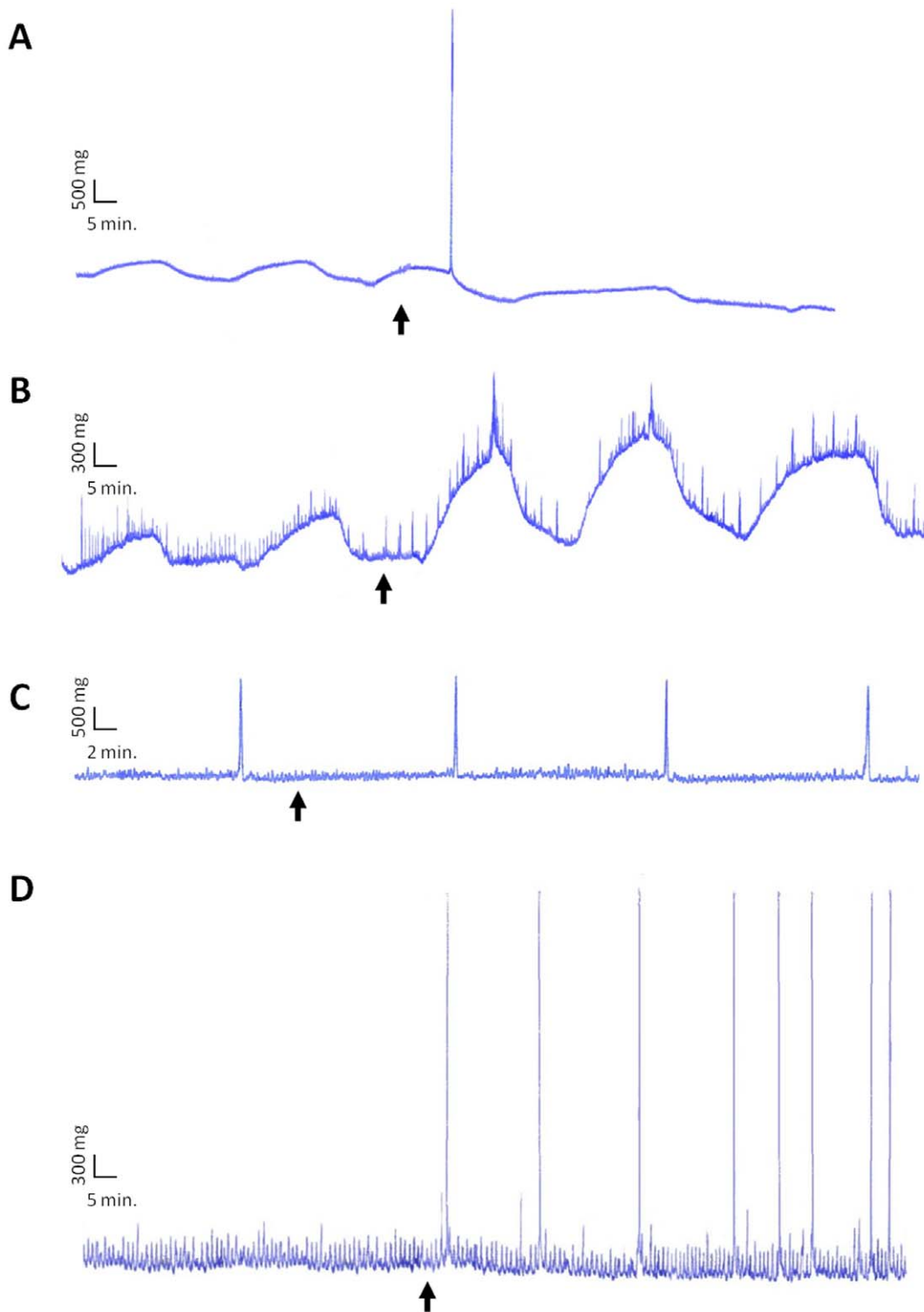
However, we showed for the first time that sex pheromones from a cephalopod were expressed from three precursors in the oviduct gland during egg-laying. The sex pheromones of *S. officinalis* induce hyperventilation and stimulate mating. Compared with *Aplysia* sex pheromones, they have similar molecular masses and abundances of disulfide bonds, and similar biological activities. Nevertheless, protein precursors appear to be very different in the two *Sepia* and *Aplysia* genera. The processing of *Sepia* precursors yields a very complex set of predicted expression products that can be further cleaved or truncated (like  $\alpha 3$  and  $\alpha 3'$ ), leading to new sets of peptides or linked by multiple disulfide bonds, whereas *Aplysia* precursors (attractin, enticin, temptin, seductin) contain a signal peptide followed by a single expression product. We cannot rule out the occurrence of several precursor processing and the multifunctional involvement of expression products in cuttlefish.

### Methods

#### Animal Handling and collection of cuttlefish glands

The two-year-old mature cuttlefish (*Sepia officinalis*) were trapped in the Bay of Seine in May and June, a location that is not privately-owned or protected in any way.





**Figure 5. Bio-activity of synthetic  $\beta 2$  and  $\alpha 3$  peptides.**  $\beta 2$ -induced contraction on (A) female gill and (B) penis from a threshold of  $10^{-8}$  M. No activity on (C) rectum.  $\alpha 3$ -induced contraction on (D) penis from a threshold of  $10^{-9}$  M. doi:10.1371/journal.pone.0046531.g005

They were maintained in aerated natural seawater in 1,000-liter outflow tanks at the Marine Station of Luc-sur-Mer (University of Caen, France).

Female main nidamental glands, oviduct glands, gills, central nervous systems (NS), and male testis, secondary glands, penises,

gills, and NSs were dissected from ethanol 3%-anesthetized mature cuttlefish [30], frozen in liquid nitrogen and stored at  $-80^{\circ}\text{C}$  until RNA isolation or peptidic extraction. No specific permits were required for the described field studies and the common cuttlefish is not endangered or protected species.

## RNA extraction and construction of a cDNA library

Total RNA was isolated from oviduct glands or nidamental glands by the acidified phenol-guanidinium thiocyanate method [31]. Total RNAs from each gland were pooled at a 1:1 ratio, and precipitated with lithium chloride (LiCl). Then, 4 µg of these total RNAs were used for ds-cDNA synthesis and amplification using the SMART approach [32].

The ds-cDNAs were directionally cloned into the pAL-17.3 plasmid vector (Evrogen, Moscow), and used to transform the XL1-Blue *E. coli* strain.

## Sequencing

Once bacterial library titration was completed ( $1.45 \times 10^7$  bacteria per µl), a total of 576 clones were randomly picked and robotically arrayed in 96-well plates. Each clone was sequenced from the 5' end using the T7 universal sequencing primer following plasmid DNA preparation. Sequencing was performed by MilleGen® Biotechnologies with BigDye V3.1 chemistries (Applied Biosystem).

## EST assembly

Raw single-pass sequence data were examined for possible sequencing errors. Open reading frames (ORFs) were manually inspected using the DNAsMac application (<http://biofreeware.com/dnasmac>). ESTs were trimmed from primer and vector sequences (using Vecscreen, <http://www.ncbi.nlm.nih.gov/VecScreen/VecScreen.html>), and poor quality sequences or sequences less than 100 bp in length were discarded. The inserted sequences were then clustered using the CAP3 assembly program (<http://deepc2.psi.iastate.edu/aat/cap/cap.html>) [33]. This software identifies ESTs representing the same transcripts after grouping all the ESTs into highly similar clusters. For the generated ESTs, if the similarity of a least 40 continuous bases was more than 90%, then the ESTs were theoretically regarded as fragments from the same mRNA or multi-copies of the same gene. They were assembled into a consensus sequence called a contig. The ESTs that could not be assembled with others were called singletons.

## Data analysis and annotation

An alignment of contig consensus sequences and singleton sequences resulting from the EST assembly process was performed against the NCBI non-redundant protein database using BLASTX (<http://blast.ncbi.nlm.nih.gov/Blast.cgi>) [34][35][36]. Only the homologous sequences that showed an E-value lower than  $10^{-5}$  with more than 33 amino acids (or conserved cysteines) were considered for further analysis.

## Assignment of putative gene functions using Gene Ontology

Where possible, Gene Ontology (GO) classifications were assigned to each protein translation based on BLASTX (E-value  $< 10^{-5}$ ) similarity to entries in a GO-annotated database (UNIPROT). GO annotations were summarized using 'GO-Slim' terms [37]. This process was automated using the Blast2GO (<http://www.blast2go.org>) [38] and InterProScan [39] operating systems. The top level consists of the following categories: biological process, cellular component, and molecular function. The second level divides these functional categories into finer sub-categories. Secretory signal sequence peptides were predicted with the SignalP software [25][40].

## Expression products of SP $\alpha$ , SP $\alpha'$ and SP $\beta$

**Recovery of material from tissues.** For nanoLC-MALDI-TOF/TOF analysis, three main nidamental glands and three oviduct glands from mature animals were ground in liquid nitrogen, homogenized in 0.1% trifluoroacetic acid (TFA) at 4°C with a 1:20 w/v ratio, and centrifuged 30 min at 35,000 g at 4°C. The supernatants were concentrated on Chromafix C18 cartridges (Macherey-Nagel).

**NanoLC-MALDI-TOF/TOF MS.** Dry pellets of acidic extracts were concentrated and desalted on OMIX-TIP C18 (10 µl, Varian), resuspended in 120 µl of 0.1% TFA in water. One hundred µl were pre-concentrated before being loaded on a C18 50 mm  $\times$  75 µm capillary column and fractionated at a flow rate of 800 nl/min (nanoLC prominence, Shimadzu) with a 90-minute acetonitrile (ACN) gradient generated from 2 to 70% and leading to 360 15-second fractions mixed with the matrix and plated on the MALDI target (AccuSpot, Shimadzu). For each sample, two successive runs were performed to use two different matrixes:  $\alpha$ -cyano-4-hydroxy cinnamic acid (CHCA) (5 mg of CHCA in 1 ml of 1:1 ACN/0.1% TFA solution) for m/z ranging from 500 Da to approximately 3 kDa and sinapinic acid (SA) (5 mg of SA in 1 ml of 0.66:1 ACN/0.1% TFA solution) for m/z over 3 kDa.

MALDI-TOF MS analyses were performed using a MALDI-TOF/TOF 5800 ABI SCIEX. Sample spots were submitted to multiple shots from the nitrogen laser (350 nm, 1000 Hz). The system was calibrated before analysis with a mixture of des-Arg-Bradykinin, Angiotensin I, Glu1-Fibrinopeptide B, ACTH (18–39), ACTH (7–38) and mass precision was better than 50 ppm in reflectron mode. In linear mode, the system was calibrated with a mixture of oxidized bovine Insulin  $\beta$ -chain, bovine Insulin, Aprotinin and Ubiquitin and mass precision was better than 200 ppm. The MS/MS spectra were acquired in reflector mode and screened using MASCOT (v2.3.02, Matrix Science LTD) against a translated EST library of female accessory sex glands for m/z under 3 kDa. For the m/z over 3 kDa, MALDI-TOF mass spectra were acquired in linear mode and the average masses of putative expression products were screened.

## Patterns of tissue-specific expression

We examined patterns of tissue-specific expression for unigenes of particular interest. Differences in expression were assayed via RT-PCR from 5 different tissues for each sex: ovary, main nidamental gland, oviduct gland, gill, central nervous system (NS) for females; and testis, secondary glands, penis, gill, NS for males.

Total RNA was isolated from each organ of mature female or mature male as described above.

RNA concentrations were determined using an ND-1000 spectrophotometer (Nanodrop Technologies) at 260 nm, using the conversion factor 1 OD = 40 µg/ml RNA. RNA integrity was verified on an Agilent bioanalyzer using RNA 6000 Nano kits (Agilent Technologies), according to manufacturer's instructions. A standard concentration of total RNA from each of these RNA extractions (1 µg) was treated with DNase I RQ1 (Promega) and reverse transcribed into single stranded cDNA using random hexamer primers, MMLV-Reverse Transcriptase (Promega) and following the manufacturer's protocol. PCR primers were designed from the genes of interest (SP $\alpha$ , SP $\alpha'$  and SP $\beta$ ) and the reference gene (Actin), within the predicted ORF: SP $\alpha$ / $\alpha'$ -s (5' CACGACTCTGAGGTCGCTCGTAATC 3'), SP $\alpha$ / $\alpha'$ -a (5' CACAGCAGGGAACCTCTTTGT3'), SP $\beta$ -s (5' TTCTGGCCCTTATTTTCGTG3'), SP $\beta$ -a (5' CGGCAATTCAAACCCATTAC), Act-s (5' TCCATCATGAAGTGCATGT3'), Act-a (5' TGGACCGGACTCGTCATATT3') as sense and antisense primers, respectively.

SP $\alpha$ / $\alpha'$  primers were designed inside the region coding for  $\alpha$ 3-3' and SP $\beta$  primers inside the region coding for  $\beta$ 2.

One  $\mu$ l of this cDNA was used as a template in a 50- $\mu$ l multiplex PCR (MyCycler, Bio Rad), targeted to the with the following cycling parameters: initial denaturation at 95°C (10 min), 30 cycles at 95°C (45 sec), then 56°C (45 sec), and then 72°C (1 min), and a final extension at 72°C (10 min). For each set of primers an equal amount of PCR amplicon (6  $\mu$ l) from each of the ten templates was electrophoresed at 100 V for 30 min in 1.8% agarose gel, stained with ethidium bromide and visualized under UV light (alphaimager EP, alpha Innotech). The target-specific amplified products had expected sizes of 656 and 785 bp for SP $\beta$  or SP $\alpha$ / $\alpha'$ , respectively, and 261 bp for Actin.

### Synthesis of peptide $\beta$ 2 (2.3 kDa)

The  $\beta$ 2 peptide (FTYPYVQVKIPGPGATYVIWamide) was synthesized on a 0.1 mmol scale by employing the Fmoc (*N*-[9-fluorenyl]methoxycarbonyl)/*t*Bu (*tert*-Butyl) SPPS strategy using a microwave peptide synthesizer with UV monitoring (Liberty, CEM), by coupling Fmoc- $\alpha$ -amino acids on Rink amide resin (0.56 mmol/g). All microwave-assisted coupling reactions were performed (300 s, 25 W, 70°C) with 4 eq of Fmoc-amino acids, 4 eq of 2-(1H-Benzotriazole-1-yl)-1,1,3,3-tetramethylammonium tetrafluoroborate (TBTU) and 10 eq of diisopropylethylamine (DiPEA) in DMF. A coupling time of 5 min was used. *N* $\alpha$ -Fmoc deprotection was performed with 20% piperidine in dimethylformamide (DMF). Side chain deprotection and cleavage of the peptide from the solid support were performed by treatment with 95% trifluoroacetic acid (TFA)/2.5% triisopropylsilane (TIS)/2.5% water for 3 h at room temperature [41]. The resin was filtrated and the crude product was precipitated in tert-butylmethylether and filtrated. The crude peptide was purified by reversed-phase HPLC (RP-HPLC) using a Waters semi-preparative HPLC system with an X Terra 10  $\mu$ m column (300 mm $\times$ 19 mm). The elution was achieved with a linear gradient of aqueous 0.08% TFA (A) and 0.1% TFA in acetonitrile (B) at a flow rate of 10 ml/min (5–60% B over 30 min) with photodiode array detection at 210–440 nm. The purity of the peptide (>95%) was controlled by analytical RP-HPLC on the same instrument with an X Terra 5  $\mu$ m column (250 mm $\times$ 4.6 mm) using a linear gradient of 0.08% TFA in water and acetonitrile containing 0.1% TFA at a flow rate of 1 ml/min (5–60% B over 20 min). Finally, integrity of the peptide was assessed by MALDI-TOF/TOF analysis.

### Synthesis and oxidization of the $\alpha$ 3 peptide (6.9 kDa)

The  $\alpha$ 3 peptide (PTWANLKGGSQGLGGLYGTQYKLY-PAHVNGFGLFITTHLKP $\overline{\text{PHNHDVPCAVCQVTK}}$  PATVL-MIP-NH<sub>2</sub>) was synthesized (0.1 mmol scale) on a Rink amide MBHA resin (VWR, Fontenay-sous-Bois, France) using a Liberty Microwave Peptide Synthesizer with UV monitoring (CEM, Orsay, France) and following the manufacturer's standard procedure. All microwave-assisted coupling reactions were performed (300 s, 25 W, 70°C except for Cys and His : 120 s, 0 W, 50°C then 240 s, 25 W, 50°C) with 5 eq of Fmoc-amino acids (Senn Chemicals, Dielsdorf, Switzerland), 5 eq HBTU (VWR) and 10 eq DIEA in DMF (Fisher Scientific, Illkirch, France). Double

coupling reactions were used for Thr<sup>2</sup>, Trp<sup>3</sup>, Leu<sup>15</sup>, His<sup>27</sup>, Val<sup>28</sup>, Leu<sup>33</sup>, Ile<sup>35</sup>, His<sup>43</sup>, Asn<sup>44</sup>, Val<sup>47</sup>, Cys<sup>49</sup>, Ala<sup>50</sup>, Val<sup>51</sup>, Cys<sup>52</sup>, Gln<sup>53</sup>, Val<sup>54</sup>, Thr<sup>59</sup> and Val<sup>60</sup>. Peptide cleavage from the resin and deprotection of the amino acid side-chains were carried out with a TFA/thioanisole/phenol/H<sub>2</sub>O/EDT mixture (82.5:5:5:5:2.5, v/v/v/v/v, Sigma-Aldrich, Saint-Quentin-Fallavier, France, each) for 3 h under agitation at room temperature. The resin was filtrated and the crude product was precipitated in tert-butylmethylether (Sigma-Aldrich) and collected by centrifugation (15 min, 4,500 rpm) as previously described [42][43][44]. The crude peptide (reduced form) was purified by reversed-phase HPLC (RP-HPLC) on a Vydac 218TP1022 C<sub>18</sub> column (2.2 $\times$ 25 cm; Grace Discovery Sciences Alltech, Templemars, France) using a linear gradient (20–50% over 45 min) of ACN/TFA (99.9:0.1, v/v) at a flow rate of 10 ml/min. Oxidization of the peptide was carried out with DMSO. Briefly, the peptide was solubilized (0.5 mM) in acetic acid (5%, pH=6) and shaken for 22 hrs at room temperature after addition of DMSO (20% of the final volume). The solution was diluted in H<sub>2</sub>O and freeze-dried. The  $\alpha$ 3 peptide was purified by semi-preparative RP-HPLC using the same chromatographic conditions as described above. Analytical RP-HPLC analysis, performed on a Vydac 218TP54 C<sub>18</sub> column (0.46 cm $\times$ 25 cm, Grace Discovery Sciences Alltech), revealed that the purity of the oxidized peptide was 83.6% (16.4% of reduced peptide). The authenticity of the  $\alpha$ 3 peptide was controlled by MALDI-TOF/TOF on a Voyager-DE PRO (AB SCIEX, Les Ulis, France) in the linear mode with sinapinic acid as a matrix.

### Biological assay

A preliminary screening of contractile organs was performed using a myotropic bioassay. Gills, rectum and penis were dissected from mature cuttlefish anesthetized with ethanol 3%. Each organ was suspended to a displacement transducer (Phympex, Bionic Instruments) connected to a printer. The muscle chamber was perfused at a flow rate of 0.5 ml/min with synthetic seawater (Instant Ocean) containing 1 mM glucose and maintained at 15°C. The samples were re-suspended in 100  $\mu$ l of perfusion medium and injected using a three-way valve in order to avoid mechanical and thermal stress. The flow of samples into the muscle chamber was traced by addition of phenol red. No specific permits were required for the described field studies.

### Acknowledgments

We thank Grégory Chitel the captain of the professional fishing boat “La Virgule” and his crew, and Stéphane André, the captain of the professional fishing boat “Fabrice-Daniel” for help in providing cuttlefish. Mass spectrometry analyses were performed by the technical platform PROTEOGEN of the University of Caen and the cuttlefish were bred in the marine station of Luc-sur-Mer (CREC).

### Author Contributions

Conceived and designed the experiments: JH CZG. Performed the experiments: JE CZG BB BL JL MBF JH. Analyzed the data: JE CZG JH. Contributed reagents/materials/analysis tools: JE CZG BB BL JL MBF JH. Wrote the paper: JE JH.

### References

- Boucaud-Camou E, Boismery J (1991) The migrations of the cuttlefish (*Sepia officinalis* L) in the English Channel. In: Boucaud-Camou, E. (Ed.), The Cuttlefish, First International Symposium on the Cuttlefish *Sepia*. Centre de Publications de l'Université de Caen. Caen. pp 179–189.
- Susswein AJ, Nagle GT (2004) Peptide and protein pheromones in molluscs. *Peptides* 25: 1523–1530. doi:10.1016/j.peptides.2003.11.027.
- Boal JG, Marsh SE (1998) Social recognition using chemical cues in cuttlefish (*Sepia officinalis* Linnaeus, 1758). *J Exp Mar Biol Ecol*, 230(2) 183–192.

4. Boal JG, Prosser KN, Holm JB, Simmons TL, Haas RE, et al. (2010) Sexually mature cuttlefish are attracted to the eggs of conspecifics. *J Chem Ecol* 36(8): 834–836.
5. Zatylny C, Gagnon J, Boucaud-Camou E, Henry J (2000) ILME: a waterborne pheromonal peptide released by the eggs of *Sepia officinalis*. *Biochem Biophys Res Commun* 275: 217–222. doi:10.1006/bbrc.2000.3286
6. Zatylny C, Gagnon J, Boucaud-Camou E, Henry J (2000) The SepOvotropin: a new ovarian peptide regulating oocyte transport in *Sepia officinalis*. *Biochem Biophys Res Commun* 276: 1013–1018. doi:10.1006/bbrc.2000.3595
7. Bernay B, Gagnon J, Henry J (2004) Egg capsule secretion in invertebrates: a new ovarian regulatory peptide identified by mass spectrometry comparative screening in *Sepia officinalis*. *Biochem Biophys Res Commun* 314: 215–222.
8. Bernay B, Baudy-Floc'h M, Zanuttini B, Gagnon J, Henry J (2005) Identification of SepCRP analogues in the cuttlefish *Sepia officinalis*: a novel family of ovarian regulatory peptides. *Biochem Biophys Res Commun* 338: 1037–1047. doi:10.1016/j.bbrc.2005.10.034
9. Bernay B, Baudy-Floc'h M, Gagnon J, Henry J (2006) Ovarian jelly-peptides (OJPs), a new family of regulatory peptides identified in the cephalopod *Sepia officinalis*. *Peptides* 27: 1259–1268. doi:10.1016/j.peptides.2005.11.025
10. Jahan-Parvar B (1976) Aggregation pheromone from the egg-mass of *Aplysia californica*. *Physiologist* 19: 240.
11. Painter SD, Gustavson AR, Kalman VK, Nagle GT, Blankenship JE (1989) Induction of copulatory behavior in *Aplysia*: Atrial gland factors mimic the excitatory effects of freshly deposited egg cordons. *Behav Neural Biol* 51: 222–236. doi:10.1016/S0163-1047(89)90857-1
12. Painter SD, Clough B, Garden RW, Sweedler JV, Nagle GT (1998) Characterization of *Aplysia* Attractin, the First Water-borne Peptide Pheromone in Invertebrates. *Biol Bull* 194: 120–131.
13. Audesirk TE (1979) A field study of growth and reproduction in *Aplysia californica*. *Biol Bull* 157: 407–421.
14. Susswein AJ, Gev S, Feldman E, Markovich S (1983) Activity patterns and time budgeting of *Aplysia fasciata* under field and laboratory conditions. *Behav Neural Biol* 39: 203–220.
15. Aspey WP, Blankenship JE (1976) *Aplysia* behavioral biology: II. Induced burrowing in swimming *A. brasiliana* by burrowed conspecifics. *Behav Neural Biol* 17: 301–312. doi:10.1016/S0091-6773(76)90662-3
16. Audesirk TE (1977) Chemoreception in *Aplysia californica* III. Evidence for pheromones influencing reproductive behavior. *Behav Biol* 20: 235–243. doi:10.1016/S0091-6773(77)90799-9
17. Cummins SF, Schein CH, Xu Y, Braun W, Nagle GT (2005) Molluscan attractins, a family of water-borne protein pheromones with interspecific attractiveness. *Peptides* 26: 121–129. doi:10.1016/j.peptides.2004.07.017
18. Painter SD, Clough B, Black S, Nagle GT (2003) Behavioral Characterization of Attractin, a Water-Borne Peptide Pheromone in the Genus *Aplysia*. *Biol Bull* 205: 16–25.
19. Painter SD, Cummins SF, Nichols AE, Akalal D-BG, Schein CH, et al. (2004) Structural and functional analysis of *Aplysia* attractins, a family of water-borne protein pheromones with interspecific attractiveness. *Proc Natl Acad Sci U S A* 101: 6929–6933. doi:10.1073/pnas.0306339101
20. Schein CH, Nagle GT, Page JS, Sweedler JV, Xu Y, et al. (2001) *Aplysia* attractin: biophysical characterization and modeling of a water-borne pheromone. *Biophys J* 81: 463–472.
21. Fan X, Wu B, Nagle GT, Painter SD (1997) Molecular cloning of a cDNA encoding a potential water-borne pheromonal attractant released during *Aplysia* egg laying. *Molecular Brain Research* 48: 167–170. doi:10.1016/S0169-328X(97)00154-X
22. Cummins SF, Nichols AE, Amare A, Hummon AB, Sweedler JV, et al. (2004) Characterization of *Aplysia* enticin and temptin, two novel water-borne protein pheromones that act in concert with attractin to stimulate mate attraction. *J Biol Chem* 279: 25614–25622. doi:10.1074/jbc.M313585200
23. Cummins SF, Nichols AE, Warso CJ, Nagle GT (2005) *Aplysia* seductin is a water-borne protein pheromone that acts in concert with attractin to stimulate mate attraction. *Peptides* 26: 351–359. doi:10.1016/j.peptides.2004.10.024
24. Henikoff S, Henikoff JG (1992) Amino acid substitution matrices from protein blocks. *Proc Natl Acad Sci USA* 89: 10915–10919.
25. Nielsen H, Engelbrecht J, Brunak S, von Heijne G (1997) Identification of prokaryotic and eukaryotic signal peptides and prediction of their cleavage sites. *Protein Eng Des Sel* 10: 1–6. doi:10.1093/protein/10.1.1
26. Cummins SF, Nichols AE, Schein CH, Nagle GT (2006) Newly identified water-borne protein pheromones interact with attractin to stimulate mate attraction in *Aplysia*. *Peptides* 27: 597–606. doi:10.1016/j.peptides.2005.08.026
27. Cummins SF, Degnan BM, Nagle GT (2008) Characterization of *Aplysia* Alb-1, a candidate water-borne protein pheromone released during egg laying. *Peptides* 2008 Feb;29(2):152–61.
28. Walters J, Harrison R (2008) EST analysis of male accessory glands from *Heliconius butterflies* with divergent mating systems. *BMC Genomics* 9: 592. doi:10.1186/1471-2164-9-592
29. Garden RW, Shippy SA, Li L, Moroz TP, Sweedler JV (1998) Proteolytic processing of the *Aplysia* egg-laying hormone prohormone. *Proc Natl Acad Sci U S A* 95: 3972–3977.
30. Ross LG, Ross B (1999) Anaesthetic and sedative techniques for aquatic animals, 2nd ed. Black Well Science, Oxford, United Kingdom: 46–47.
31. Chomczynski P, Sacchi N (1987) Single-step method of RNA isolation by acid guanidinium thiocyanate-phenol-chloroform extraction. *Anal Biochem* 162: 156–159. doi:10.1016/0003-2697(87)90021-2
32. Zhu YY, Machleder EM, Chenchik A, Li R, Siebert PD (2001) Reverse transcriptase template switching: a SMART approach for full-length cDNA library construction. *BioTechniques* 30: 892–897.
33. Huang X, Madan A (1999) CAP3: A DNA sequence assembly program. *Genome Res* 9: 868–877.
34. Altschul SF, Madden TL, Schäffer AA, Zhang J, Zhang Z, et al. (1997) Gapped BLAST and PSI-BLAST: a new generation of protein database search programs. *Nucleic Acids Res* 25: 3389–3402.
35. Camon E, Magrane M, Barrell D, Lee V, Dimmer E, et al. (2004) The Gene Ontology Annotation (GOA) Database: sharing knowledge in Uniprot with Gene Ontology. *Nucleic Acids Res* 32: D262–D266. doi:10.1093/nar/gkh021
36. Boguski MS, Lowe TM, Tolstoshev CM (1993) dbEST-database for “expressed sequence tags.” *Nat Genet* 4: 332–333. doi:10.1038/ng0893-332
37. Ashburner M, Ball CA, Blake JA, Botstein D, Butler H, et al. (2000) Gene Ontology: tool for the unification of biology. *Nat Genet* 25: 25–29. doi:10.1038/75556
38. Conesa A, Götz S, García-Gómez JM, Terol J, Talón M, et al. (2005) Blast2GO: a universal tool for annotation, visualization and analysis in functional genomics research. *Bioinformatics* 21: 3674–3676. doi:10.1093/bioinformatics/bti610
39. Zdobnov EM, Apweiler R (2001) InterProScan—an integration platform for the signature-recognition methods in InterPro. *Bioinformatics* 17: 847–848.
40. Bendtsen JD, Nielsen H, von Heijne G, Brunak S (2004) Improved prediction of signal peptides: SignalP 3.0. *J Mol Biol* 340: 783–795. doi:10.1016/j.jmb.2004.05.028
41. Sole NA, Barany G (2011) Optimization of solid-phase synthesis of [Ala<sup>8</sup>]-dynorphin A. *J Org Chem* 76: 5399–5403. doi:10.1021/jo00046a022
42. Leprince J, Gandolfo P, Thoumas JL, Patte C, Fauchère JL, et al. (1998) Structure-activity relationships of a series of analogues of the octadecaneuropeptide ODN on calcium mobilization in rat astrocytes. *J Med Chem* 41: 4433–4438. doi:10.1021/jm980275d
43. Leprince J, Oulyadi H, Vaudry D, Masmoudi O, Gandolfo P, et al. (2001) Synthesis, conformational analysis and biological activity of cyclic analogs of the octadecaneuropeptide ODN. Design of a potent endozepine antagonist. *Eur J Biochem* 268: 6045–6057.
44. Le Marec O, Neveu C, Lefranc B, Dubessy C, Boutin JA, et al. (2011) Structure-activity relationships of a series of analogues of the RFamide-related peptide 26RFa. *J Med Chem* 54: 4806–4814. doi:10.1021/jm200418c