



HAL
open science

Investigation of collective radial expansion and stopping in heavy ion collisions at Fermi energies.

Eric Bonnet, Maria Colonna, A. Chbihi, J. D. Frankland, Diego D. Gruyer,
J.P. Wielecko

► **To cite this version:**

Eric Bonnet, Maria Colonna, A. Chbihi, J. D. Frankland, Diego D. Gruyer, et al.. Investigation of collective radial expansion and stopping in heavy ion collisions at Fermi energies.. 2013. hal-00870587v1

HAL Id: hal-00870587

<https://hal.science/hal-00870587v1>

Preprint submitted on 7 Oct 2013 (v1), last revised 3 Mar 2014 (v2)

HAL is a multi-disciplinary open access archive for the deposit and dissemination of scientific research documents, whether they are published or not. The documents may come from teaching and research institutions in France or abroad, or from public or private research centers.

L'archive ouverte pluridisciplinaire **HAL**, est destinée au dépôt et à la diffusion de documents scientifiques de niveau recherche, publiés ou non, émanant des établissements d'enseignement et de recherche français ou étrangers, des laboratoires publics ou privés.

Investigation of collective radial expansion and stopping in heavy ion collisions at Fermi energies

E. Bonnet,^{1,*} M. Colonna,² A. Chbihi,¹ J.D. Frankland,¹ D. Gruyer,¹ and J.P. Wieleczko¹

¹*GANIL, CEA-DSM/CNRS-IN2P3, Bvd. Henri Becquerel, F-14076 Caen CEDEX, France*

²*INFN-Laboratori Nazionali del Sud, I-95123 Catania, Italy*

(Dated: October 7, 2013)

We present an analysis of multifragmentation events observed in central Xe+Sn reactions at Fermi energies. Performing a comparison between the predictions of the Stochastic Mean Field (SMF) transport model and experimental data, we investigate the impact of the compression-expansion dynamics on the properties of the final reaction products. We show that the amount of radial collective expansion, which characterizes the dynamical stage of the reaction, influences directly the onset of multifragmentation and the kinematic properties of multifragmentation events. For the same set of events we also undertake a shape analysis in momentum space, looking at the degree of stopping reached in the collision, as proposed in recent experimental studies. We show that full stopping is achieved for the most central collisions at Fermi energies. However, considering the same central event selection as in the experimental data, we observe a similar behavior of the stopping power with the beam energy, which can be associated with a change of the fragmentation mechanism, from statistical to prompt fragment emission.

I. INTRODUCTION

Nuclear matter Equation of State (EoS) and transport properties play a fundamental role in the understanding of many aspects of nuclear physics and astrophysics. For instance, neutron star genesis and cooling, as well as the possible occurrence of hybrid structures, transition to the deconfined phase and black-hole formation, are strongly influenced by nuclear compressibility and viscosity [1]. Heavy ion collisions (HIC) offer the unique possibility to create, in terrestrial laboratories, transient states of nuclear matter in a wide range of density, temperature and N/Z asymmetry, thus making it possible to access information on fundamental properties of nuclear systems far from normal conditions. Indeed relevant indications on the stiffness of the EoS at supra-saturation densities and on in-medium modifications of the two-body nucleon-nucleon cross section have emerged from the study of collective flows and degree of stopping measured in heavy ion reactions at relativistic energies [2]. It is worth mentioning that collective flows are also widely investigated in the context of ultra-relativistic HIC, in connection with the occurrence of phase transitions to the deconfined Quark-Gluon-Plasma phase and its viscosity [3].

Generally speaking, reaction mechanisms in the Fermi energy domain (20-50 MeV/A) reflect an interesting interplay between mean-field (one-body) properties, dominant at low energies, and the increasing importance of two-body correlations such as nucleon-nucleon collisions. In particular, the combined action of nuclear compressibility and nucleon-nucleon cross section governs the compression-expansion dynamics typically observed in central collisions. The reaction path can then bring the formed excited nuclear system to low density regions where the mean field becomes unstable. In this case two-body correlations and fluctuations are expected to provide the seeds for fragment formation leading to the occurrence of multifragmentation phenomena which can be described in the framework of a liquid-gas-type phase transition [4].

Observed first by the FOPI collaboration [5–7] and interpreted as an "extra push" with respect to the thermal pressure of an equilibrated composite system, a collective expansion energy has been extracted from experimental data over a wide range of beam energy [8]. Several studies of the multifragmentation process, and of the corresponding role of the collective expansion, have been undertaken in the framework of transport theories [4, 9–11] and some analyses [12–14] have pointed out the importance of this effect on fragment formation, looking at, for example, the balance between the amount of radial collective flow and recombination probability [12].

However, to our knowledge, estimates of the radial collective energy present in experimental multifragmentation data have been mostly obtained by employing statistical models [15–17] which treat separately fragment production and collective expansion effects [18–23]. The main justification is the small contribution of the collective expansion energy [24] with respect to the total excitation energy characterizing the Fermi energy domain (around 20-30%).

*Electronic address: eric.bonnet@ganil.fr

Nevertheless, even for this amount of expansion, recent experimental analyses show a significant influence on the fragment production [25].

Particularly sensitive to the interplay between one- and two-body effects are also observables characterizing the shape of the reaction events in momentum space. For instance, the so-called stopping power, which was first investigated by the FOPI collaboration at higher bombarding energies [26], measures the efficiency of conversion of the initial beam energy into transverse directions, as quantified by taking the ratio of total transverse to parallel energy-based quantities. In Ref. [27], similar analysis has been done for collisions at Fermi energy domain and one result is that full stopping is not achieved.

The aim of this paper is to bring information on the connection between fragmentation features and the underlying collective expansion mechanism, with the help of a transport theory description of the reaction dynamics. Moreover, we will discuss the existence of possible correlations between the evolution of the fragmentation regime and the experimentally-observed trend for the amount of stopping reached in heavy ion reactions at Fermi energies. A combined study of the two features appears as a promising tool to learn about relevant nuclear matter properties. The reaction dynamics is described in the framework of a semi-classical microscopic transport model, the Stochastic Mean Field (SMF) approach [28, 29]. This choice fits the requirement to have a well implemented nuclear mean-field dynamics together with the effects of fluctuations induced by two-body scatterings. Central and mid-central collisions will be investigated taking, as reference, the INDRA data [18, 19, 30, 31] for the reactions $^{129}\text{Xe}+^{119}\text{Sn}$ at 25,32,39,45 and 50 MeV/A.

The paper is organized as follows: in Section II we first review the main ingredients of the SMF model, then we briefly present the systems analysed before discussing SMF results concerning phase diagram trajectories, pre-fragment formation and recombination. Section III is devoted to the comparison with INDRA data : for this purpose we first test, on simulated events, the validity of the adopted central collisions selection, based on the flow angle observable [18]. Treating in the same way simulations and experimental data, we show a comparison of fragment partition properties looking at charge and velocities. Observables related to stopping power in nuclear collisions are introduced and discussed in Section IV. Finally, conclusions and perspectives are drawn in Section V.

II. RESULTS OF THE SMF MODEL

A. Description and ingredients

We consider, as starting point, the Boltzmann-Langevin (BL) equation for the time evolution of the semiclassical one-body distribution function $f(\mathbf{r}, \mathbf{p}, t)$:

$$\frac{\partial f}{\partial t} + \frac{\mathbf{p}}{m} \frac{\partial f}{\partial \mathbf{r}} - \frac{\partial U}{\partial \mathbf{r}} \frac{\partial f}{\partial \mathbf{p}} = I_{coll}[f] + \delta I[f]. \quad (1)$$

The coordinates of isospin are not shown for brevity. Eq.(1) essentially describes the evolution of the system in response to the action of the self-consistent mean-field potential U , whereas effects of two-body correlations and fluctuations are incorporated in the collision integral, I_{coll} , and its stochastic part, δI . The average term $I_{coll}[f]$ takes into account the energy, angular and isospin dependence of free nucleon-nucleon cross sections [32].

The SMF model represents an approximate approach to solve the BL equation, where phase-space fluctuations are projected in coordinate space. Thus the fluctuating term $\delta I[f]$ is implemented through stochastic spatial density fluctuations [28, 29].

We adopt the following parametrization of the mean-field potential:

$$U_q = A \frac{\rho}{\rho_0} + B \left(\frac{\rho}{\rho_0} \right)^{\alpha+1} + C \frac{\rho_n - \rho_p}{\rho_0} \tau_q \quad (2)$$

where ρ denotes the density, $q = n, p$ and $\tau_n = 1, \tau_p = -1$. The coefficients $A = -356 \text{ MeV}, B = 303 \text{ MeV}$ and the exponent $\alpha = \frac{1}{6}$, characterizing the isoscalar part of the mean-field, are fixed requiring that the saturation properties of symmetric nuclear matter, $\rho_0 = 0.16 \text{ fm}^{-3}$ and $E/A = -16 \text{ MeV/nucleon}$, with a compressibility of 200 MeV , are reproduced. This choice corresponds to a Skyrme-like effective interaction, namely SKM^* , for which we consider the effective mass as being equal to the nucleon bare mass. As far as the isovector part of the nuclear interaction is concerned, we take a constant value of $C = 36 \text{ MeV}$, corresponding to a linear (stiff) behavior of the potential part of the symmetry energy, $C_{sym}^{pot} = 36\rho/(2\rho_0)$ [32, 33].

Eq.(1) is solved adopting the test particle method. The inclusion of fluctuations in the dynamics allows one to address mechanisms governed by the growth of mean-field instabilities, such as spinodal decomposition, which lead to

multifragmentation process [4]. The products generated by the reaction dynamics are reconstructed from the one-body density distribution by applying a coalescence procedure, connecting nearby cells with density larger than a cut-off value. At the end of the dynamical stage (i.e. at the so-called freeze-out time) the primary fragments are still hot. Hence the dynamical events are plugged in a statistical de-excitation code, in order to get the properties of the final reaction products. We adopt the SIMON code [34], which describes the in-flight secondary de-excitation through the Coulomb field. A drawback of our mean-field based approach is that the production of light charge particles ($Z < 3$, $A > 1$) is not well described. Indeed the primary yield of such particles is largely underestimated in the code, thus favouring free nucleon emission. In the following we will concentrate on the properties of intermediate mass fragments (IMF) with charge (Z) greater than 4.

B. Details of the calculations

We performed, for the system $^{129}\text{Xe}+^{119}\text{Sn}$, two runs of calculation :

- The first one is dedicated to central collisions. The range of impact parameter (b) is $[0;4]$ fm by step of 0.5 fm, the bombarding energies are 25,32,35,39,45, 50 MeV/A. For the lowest beam energies (25 and 32 MeV/A), the possible contribution of larger impact parameters, up to $b = 6.5$ fm, is considered. We use 30 test-particles per nucleon and run 1000 events for each system in a $40 \times 40 \times 40$ fm^3 box until $t=400$ fm/c.
- The second run is dedicated to the investigation of the stopping power. We take the same bombarding energies and enlarge the impact parameter range, $b \in [0.5;6.5]$ fm. We run 100 events for each system in a $80 \times 80 \times 80$ fm^3 box until $t=440$ fm/c.

We consider two values for the density cut-off employed in the coalescence procedure: 0.03 and 0.09 fm^{-3} . The first value corresponds to the standard parameter used in the model [32]. According to this choice, all regions with density lower than 0.03 fm^{-3} (about 1/5 of the saturation density) are associated with free nucleon emission. The large cut-off density of 0.09 fm^{-3} is used for exploratory purposes. Indeed it allows one to identify high-density peaks (a kind of early recognition of fragments) even at early times, when the system is still rather compact, and to investigate the recombination effects during the expansion phase. The coalescence procedure is applied at each step of 20 fm/c from $t=0$ fm/c to follow the evolution of the composite system up to fragmentation, and deduce properties such as density and excitation energy. Thus we have access to the corresponding trajectory followed by the composite system in the nuclear matter phase diagram and to the properties, in both position and velocity space, of the formed fragments. The freeze-out time, defined as the time when primary fragments are well formed and the nuclear interaction among them is almost negligible, corresponds to $t \approx 260$ fm/c. The subsequent propagation in the Coulomb field is treated inside the SIMON code; 20 SIMON decays per SMF event are performed.

C. First stage of the collision : trajectories of the composite system in the phase diagram

We address the time evolution of the hot composite sources formed in central collisions ($b = 0.5$ fm). Such collisions are characterized by a compression phase, due to the initial collisional shock, with a subsequent expansion and fragment formation. The role of compression and expansion phases is studied looking at the mean trajectory of the composite source in the excitation energy (E^*) - density (ρ) plane. Density is normalized to the value $\rho_{init}=0.10\text{fm}^{-3}$ corresponding to the average density of the colliding nuclei in their ground state. Such trajectory is plotted on the left panel of fig. 1, for the reaction at 45 MeV/A.

From these trajectories, we extract the maximum density (ρ_{max}) reached by the system, and the maximum radial expansion energy (E_0), corresponding to the time when the system goes back to normal density, just before the beginning of the expansion phase. To extract the radial expansion energy [13], we use the radial velocity (eq. 3) profile of the ensemble of test-particles belonging to the composite source and apply a fit procedure using eq. 4. An example of such a profile is shown in the middle panel of fig.1. After extracting the root-mean-square radius (R_0 , eq. 5) of the test-particle distribution, we then obtain E_0 (in MeV/A), as written in eq. 6.

$$\beta_{rad} = \frac{\vec{\beta} \cdot \vec{r}}{\|\vec{r}\|} \quad (3)$$

$$\beta_{rad}(r) = a \cdot r + b \quad (4)$$

$$R_0^2 = \frac{\sum_k A_k r_k^2}{\sum_k A_k} \quad (5)$$

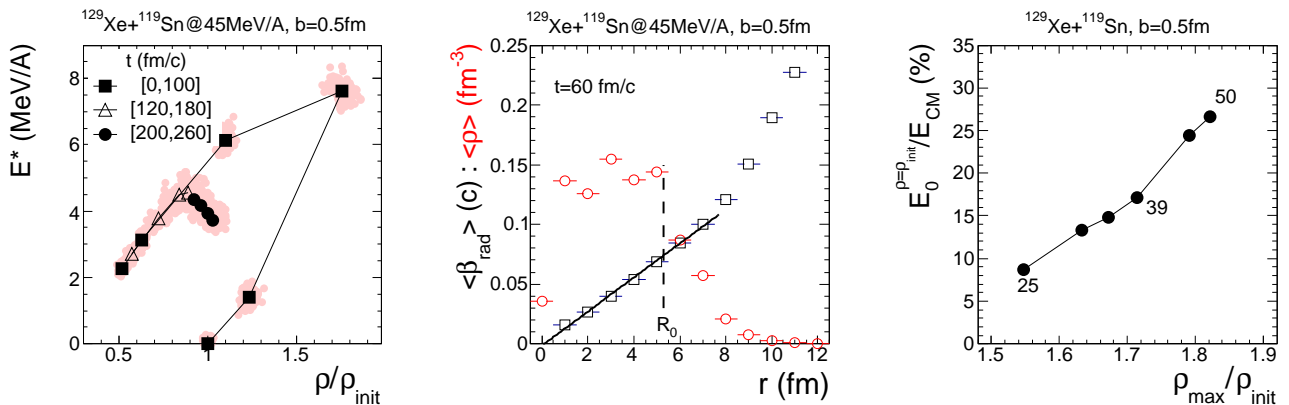


FIG. 1: **Left panel** : mean trajectory in the density (ρ) - excitation energy (E^*) plane; each black marker stands for a time from $t=0$ to $t=260$ fm/c by step of $t=20$ fm/c. The markers indicate the mean values while red scatter plots indicate the population for the set of events. **Middle panel** : mean evolution of density (ρ , red circles) and radial velocity (β_{rad} , black squares) as a function of the distance from the center of the source (r); the continuous line indicates the results of the fit procedure of the radial velocity profile (eq. 4) and the vertical dashed line indicates the value of the root mean square radius of the source (eq. 5). **Right panel** : correlation between the radial expansion energy (E_0 , see eq. 6) and the maximum density (ρ_{max}) reached by the source during the compression phase; each point stands for each reaction energy from 25 to 50 MeV/A. For normalization of observables see text.

$$E_0 = \frac{1}{2} m_u \beta_{\text{rad}}^2(r = R_0) \quad (6)$$

In the equations above $\vec{\beta}$ denotes the local velocity field, A_k is the number of test particles located at the distance r_k and m_u is the unified atomic mass unit. On the right panel of figure 1 the extracted values are shown, for all simulated bombarding energies (from 25 to 50 MeV/A), as a function of the maximum density reached by the composite source. The radial expansion energy is normalized to the available kinetic energy in the center of mass of the reaction. The almost linear dependence indicates that to first order the potential energy associated with the compression of the system is converted into radial expansion energy in a similar way. However it seems that from $E_{\text{proj}}=39$ MeV/A we see a transition with more efficiency to convert initial compression to subsequent expansion. We also notice that, for the highest energy, the radial expansion energy reaches 30% of the available kinetic energy, which is in good agreement with experimental estimates deduced from multifragmentation data [8]. The absolute values are also reported in the table II (see Section III.C). After this direct evaluation of the collective radial expansion we will now focus on the production of fragments and its time scale.

D. Expansion phase, nascent fragment partition and recombination effects

When the hot expanding source reaches low density regions, density fluctuations start to play an important role. Indeed they are amplified by the unstable mean-field, leading to the possibility to observe multifragmentation. Multifragmentation is characterized by a simultaneous production of many fragments (defined in this work as elements with charge $Z \geq 5$). The excitation energy required for the onset of multifragmentation has been derived from comparisons with statistical models [35–37], and more recently, by measuring the fragment emission time using model-independent Coulomb chronometry [38]. These studies show that multifragmentation occurs above $E^*=4$ MeV/A, which corresponds to a bombarding energy of 25 MeV/A for the Xe+Sn central collisions. On the other hand, in SMF calculations the multifragmentation regime is achieved above $E_{\text{proj}} = 39$ MeV/A. At lower energies, the fragments produced in the calculations mainly come from secondary decay processes.

As an illustration, we show on the left panel of figure 2, the mean evolution with time of the multiplicity of primary fragments (M_{frag}) identified through the coalescence procedure, for two bombarding energies, 35 MeV/A (full symbols) and 50 MeV/A (open symbols), respectively below and above this threshold. For each bombarding energy, the two curves stand for two values of the density cut (ρ_{cut}) used in the coalescence procedure : the usual one (0.03 fm^{-3} , black squares) and a greater one (0.09 fm^{-3} , red triangles), aiming at an easier recognition of fragments in the case of compact configurations.

Let us consider the usual density cut (0.03 fm^{-3}). At 35 MeV/A, the mean fragment multiplicity increases slowly up to $M_{\text{frag}} \sim 1.7$. At 50 MeV/A, fragments are produced quickly and the multiplicity reaches its maximum ($M_{\text{frag}} \sim 6$)

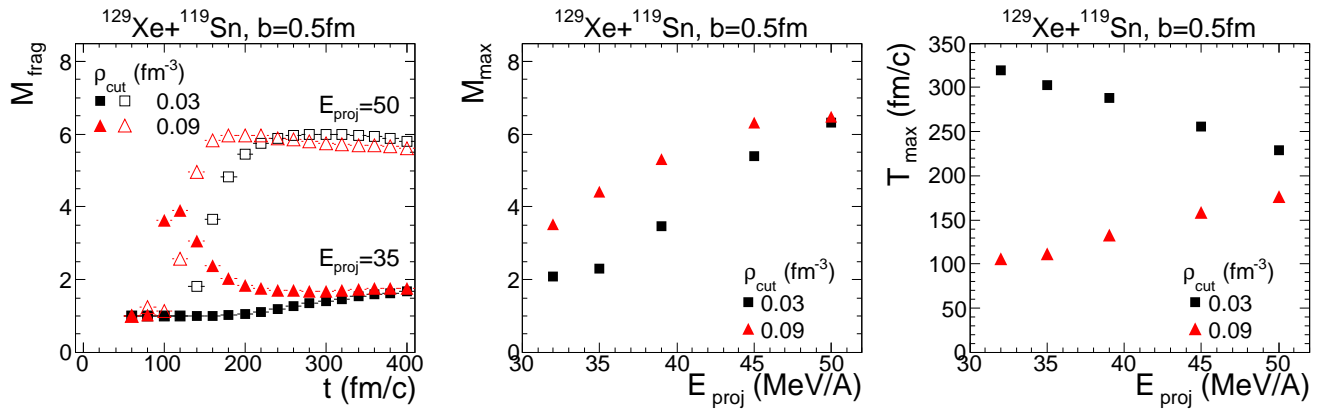


FIG. 2: **Left panel** : multiplicity of fragments (M_{frag}) time evolution for two density cut-off (black squares and red triangles respectively for $\rho_{cut}=0.03$ and 0.09 fm^{-3}) and for two bombarding energies (full and open symbol respectively for $E_{proj}=35$ and 50 MeV/A .); **middle panel** : Evolution with bombarding energies of the maximum value (M_{max}) reached by multiplicity of fragment for the two density cut-off; **right panel** : evolution with bombarding energies of time (T_{max}) when maximum of fragment multiplicities is reached for the two density cut-off.

around $t=240\text{fm/c}$. To go more into details of the fragment production during the dynamical stage, we now investigate the evolution of M_{frag} with $\rho_{cut}=0.09\text{ fm}^{-3}$. At 50 MeV/A , a similar evolution is observed but faster by about $60\text{-}80\text{ fm/c}$. The main difference concerns $E_{proj}=35\text{ MeV/A}$: high values of M_{frag} compatible with multifragmentation are observed around $t=120\text{ fm/c}$ (i.e. on short time scales). Then the multiplicity decreases and reaches the values corresponding to $\rho_{cut}=0.03\text{ fm}^{-3}$ at larger times. This indicates that, during the expansion phase, some pre-fragments are formed, but they do not survive and recombine, leading to the observation of one or two big fragments in the exit channel.

This transient state consisting of nascent partitions which then recombine is observed from $E_{proj}=32\text{ MeV/A}$. To extract its properties we search event by event for the time (T_{max}) where the maximum number of fragments (M_{max}) is reached by the system and then compute the mean values [48]. On the middle and right panels of figure 2, the evolution of these two quantities are shown for the two ρ_{cut} values for E_{proj} between 32 and 50 MeV/A . We see that using $\rho_{cut}=0.09\text{ fm}^{-3}$, significant values of the multiplicity are achieved ($3.5\text{-}6$) even at low energy, corresponding to nascent fragment partitions. For the standard $\rho_{cut}=0.03\text{ fm}^{-3}$, multifragmentation events are dominant above 39 MeV/A . Indeed, increasing the bombarding energies, we observe closer values for the two density cuts. On the right panel the time (T_{max}) associated with the maximum multiplicity is plotted. It exhibits an opposite trend for the two cut-offs and values converge with increasing bombarding energies. For $\rho_{cut}=0.09\text{ fm}^{-3}$ and lower energies, very short times are observed, indicating that the recombination of nascent partitions is rather fast. On the other hand, at higher energies time scales are longer, but coherent with the picture of a slower continuous evolution towards final fragment partitions in the exit channel.

We conclude that density fluctuations in the low density composite system are sufficient to lead to pre-fragment formation at early times. From this common stage, two scenarios are observed : nascent partitions recombine into a composite source or survive leading to multifragmentation. The amount of collective radial expansion appears to be the main discriminator. The shift of the multifragmentation threshold towards higher bombarding energies, as compared to experimental results, indicates an underestimation of the radial expansion. As it will be shown in the next Section, fragment velocities are underestimated also when multifragmentation is observed. These observations are linked to known limitations of semi-classical models, with respect to a full quantum treatment : indeed semi-classical models are characterized by a reduced capability of the excited nuclear systems to keep particles inside the potential well, due to the lack of quantum reflection effects [39]. Instead of expanding under the effect of the thermal pressure, the hot system generally emits a large number of particles, reducing its excitation energy and temperature. To quantify the damping of collective flow, we go now into a realistic comparison between SMF+SIMON outputs and INDRA multifragmentation data.

III. COMPARISON TO EXPERIMENTAL DATA

A. Simulated cross section and freeze-out time.

We now present a comparison between SMF calculation outputs and INDRA data obtained from selected central collisions. We will seek, in the experiment and in the simulations, for the events which correspond to the disassembly of a unique composite source (denoted as “fusion” events in the following). To do so, we consider SMF simulations mainly in the impact parameter (b) range between 0.5 and 4 fm. In the following we will show that for bombarding energies above 39 MeV/A, this range is sufficient to select all fusion events while for lower energies, fusion events contribute also at greater impact parameter. Starting from a flat b distribution and taken the total reaction cross section given by the Kox formula [40], we apply a renormalisation to mimic the typical triangular distribution of impact parameter. For the considered impact parameter range, it corresponds to around 10% of the reaction cross section [49]. As stated above, we consider that freeze-out is achieved at time $t=260$ fm/c. At this time, for fusion events at bombarding energies above 39 MeV/A, fragment production and relaxation in momentum space is almost achieved in SMF. Excitation energy (E^*) and density (ρ) of primary fragments are independent of their charge with mean values between 3.4 and 3.8 MeV/A for E^* and 1.0 and 1.1 for ρ/ρ_{init} . Angular momentum values are between 0 and $30 \hbar$. In SIMON code, primary hot fragments are supposed spherical and at normal density. These assumptions are thus reasonable for fusion events at bombarding energies above 39 MeV/A. For the lowest energies, the time evolution indicates that SMF events which do not break into pieces are not completely relaxed in \mathbf{r} space and the passage between SMF and SIMON could lose some coherency. Anyhow for the present work, the main goal is to compare with experimental data the cases when complete multifragmentation is achieved and we take $t=260$ fm/c as freeze-out time for all energies and all impact parameters. For each SMF event, we perform 20 SIMON de-excitations and obtain a comparable set of data to study central collisions. The first step is to test the assumptions made in the data to select the so-called central collisions.

B. Selection of central collisions in SMF+SIMON

To study fragmentation properties of hot primary sources in experimental data, one has to focus on the most central collisions (low impact parameter range) and try to extract them from the whole set of collected reactions. Before that, a preliminary selection has to be made on the total detected charge (Z_{tot} , eq. 7) in the experimental events. We keep only the so-called complete events, with Z_{tot} greater or equal than 90% of the total charge of the system (104). Fragment properties of the selected set of events are compared directly to the results of the simulations, without filtering. We will focus in the following on the selection based on the orientation of events in momentum space which has been widely used by the INDRA collaboration [18, 19, 30]. We calculate event by event the kinetic energy tensor (eq. 8) of fragments. From its eigen values, an ellipsoid is defined which describes the matter distribution. In this way the flow angle (θ_{flow} , eq. 9), is defined as the angle between the main axis of the ellipsoid \vec{e}_3 and the beam direction \vec{k} .

$$Z^{tot} = \sum_{i=1}^{M_{tot}} Z_{(i)} \quad (7)$$

$$Q_{ij} = \sum_{\nu=1}^{M_{frag}} \frac{p_{\nu}^{(i)} p_{\nu}^{(j)}}{m_{\nu}(\gamma_{\nu} + 1)} \quad (8)$$

$$\theta_{flow} = \arccos(\vec{e}_3 \cdot \vec{k}) \in [0; 90^\circ] \quad (9)$$

In the equation, m_{ν} and p_{ν} denotes the fragment mass and momentum, and γ , the Lorentz factor. The main justification of the use of this observable is the following : an equilibrated system which undergoes multifragmentation will produce an isotropic distribution of fragments leading to a flat distribution for the $\cos \theta_{flow}$ observable while a system which keeps a memory of the entrance channel favours orientation along the beam axis and will produce a distribution peaked at $\cos \theta_{flow}=1$.

On the left panel of figure 3 flow angle distributions are shown for SMF+SIMON (black line) and INDRA events (black squares) for $E_{proj}=45$ MeV/A. Data are normalized to the distribution of simulated events, using the ratio of the cross section of a posteriori selected events (see table I). The good agreement of the shape indicates a good reproduction of the topology of events by SMF. The distribution is made from two components : the most central collisions (blue area) produce a rather flat distribution, while a more forward-peaked distribution is due to

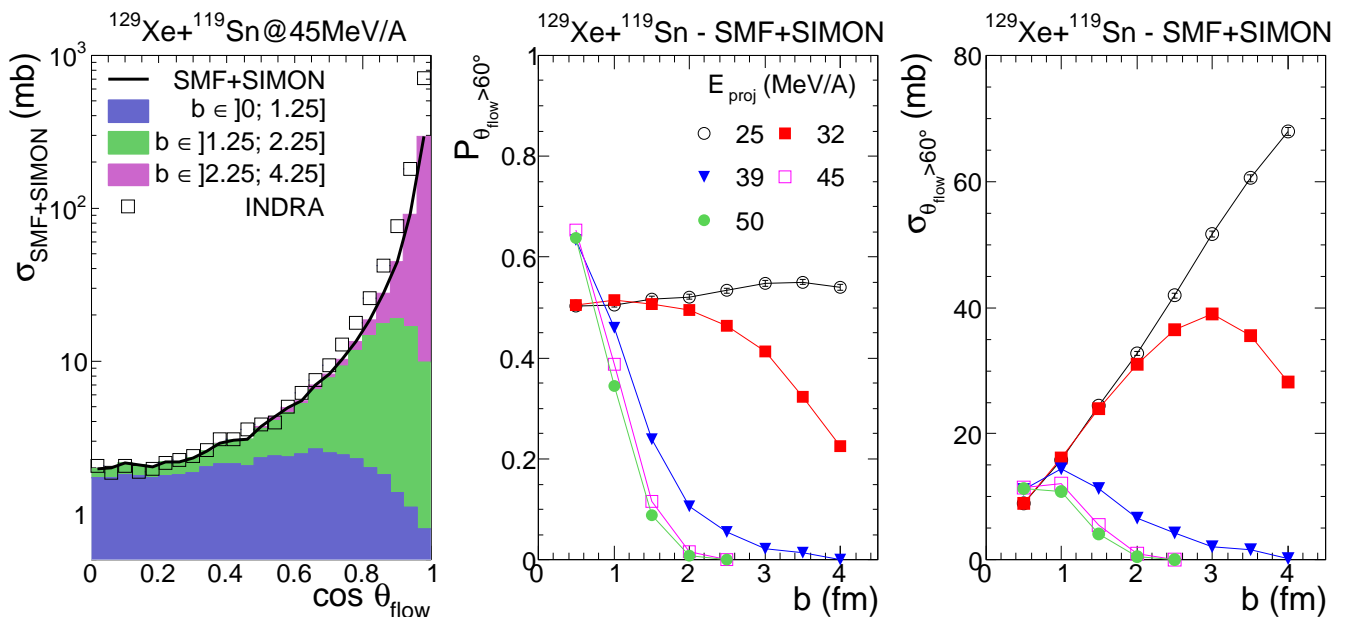


FIG. 3: **Left panel** : distributions in mb of the flow angle cosinus ($\cos \theta_{flow}$) distribution : black line distribution is for SMF+SIMON events and the three colors stand for the relative contribution of 3 impact parameter (b) ranges. Black squares distribution is for INDRA data after normalization to the simulated cross section (see text for details); **middle panel** : probability for each impact parameter (b) that simulation events fulfil the condition $\theta_{flow} > 60^\circ$; **right panel** : cross section contribution of each impact parameter to the selected sample of events.

E_{proj}	$\sigma_{\theta_{flow} > 60^\circ}$ (mb)		$P_{M_{frag} \geq 3}$		
	SMF+SIMON	INDRA	SMF	SMF+SIMON	INDRA
25	39.3	18	0.0	0.64	0.94
32	30.4	4.3	0.0	0.58	0.98
39	3.3	2.3	0.45	0.73	0.98
45	1.9 (30.3)	1.9	0.98	0.98	0.99
50	1.7	1.8	1.00	1.00	0.98

TABLE I: **Second and third columns** : Cross sections in mb of selected SMF+SIMON and experimental INDRA events. Values for SMF+SIMON are scaled to the experimental value at $E_{proj}=45$ MeV/A (see text for details); **three last columns** : probabilities that multiplicity of fragments are greater or equal to 3 for SMF primary events, SMF+SIMON final events and experimental INDRA events.

more peripheral collisions (green and purple areas). In the experimental data, binary collisions are rejected by the requirement on the total detected charge. This is the reason why considering impact parameters below 4 fm in the simulations is sufficient to reproduce the experimental flow angle distribution. In the following, we apply the same criterion to the simulation outputs as for experimental data : $\theta_{flow} > 60^\circ$.

In the middle and right panels of fig. 3, effects of the selection on the simulated events statistics in terms of probability and cross section are shown. Looking first at evolution of probabilities with impact parameter, two regimes appear located below and above 39 MeV/A. For higher energies, the probability that events are selected becomes negligible above $b=1.5$ fm indicating a rather sharp transition between fusion and binary collisions. Moreover it has to be noticed, that for $b=0.5$ fm, events with perpendicular orientation with respect to the beam axis ($\cos \theta_{flow}=0$) are favoured, indicating a full stopping. Concerning lower energies, fusion events are also produced in mid-central reactions ($b \in [3; 6]$ fm) which explain the important part of selected events. Indeed mean-field based approaches tend to overestimate mean-field dissipation and orbiting effects. Instead of reseparating after a short interaction time, projectile and target stay stuck and produce high spin composite systems. For $E_{proj}=39, 45, 50$ MeV/A, the chosen impact parameter range $b \in [0.5; 4.]$ fm is sufficient to collect all events which fulfil the condition $\theta_{flow} > 60^\circ$ while for $E_{proj}=25$ and 32 MeV/A, a wider range is necessary [50].

In first part of table I, we report the total cross section of the selected events, as observed in the data and in the simulations. Since only almost complete events are retained in the experimental data analysis, the associated cross section depends on the detection efficiency. Cross sections in the simulations, have to be normalised to get comparable values. We consider the bombarding energy $E_{proj}=45\text{MeV/A}$, where the simulations (SMF+SIMON) provide a good description of the data : from the corresponding cross section values, in the data (1.9 mb) and in the simulations (30.3), we define a normalisation factor as the ratio between the two. This factor is used in figures 3 and 4. After this renormalization, cross section values, for the highest energies, are close to 2 mb. For lower energies, the overestimation of simulated cross sections is coherent with the contribution coming from mid-central reactions mentioned before [51]. The first step to evidence multifragmentation processes in the simulations is the presence of events with $M_{frag} \geq 3$, at the primary level. We report in the second part of table I, the probability that events fill this criterion ($P_{M_{frag} \geq 3}$). The fourth and fifth columns stand for SMF primary events and SMF+SIMON final events. The whole fragment production for $E_{proj}=25$ and 32 MeV/A comes from sequential splitting calculated by the SIMON code. The greater values of $P_{M_{frag} \geq 3}$ for 25 MeV/A, with respect to 32 MeV/A, is due to the exploration of high spin regions by the composite system in the mid-central reactions. Indeed such exotic events are less important for $E_{proj}=32$ MeV/A. For $E_{proj}=39$ MeV/A, half of events are multifragmentation events while for greater energies full multifragmentation is achieved. The last column reports the same information for INDRA data : the probability is close to 1 on the whole considered bombarding energy range.

C. Fragment charge and velocity distributions for $E_{proj}=39, 45,$ and 50 MeV/A.

In the following we will compare fragment properties, as given by the SMF + SIMON simulations, to the INDRA data. We will focus on the comparison for the bombarding energies 39, 45 and 50 MeV/A, where SMF calculations lead to multifragmentation events.

The left panels of fig.4 shows the evolution of final fragment multiplicity (M_{frag}) and the total charge bound in fragments (Z_{frag}) with bombarding energy. The error bars indicate the standard deviation of the distributions. At $E_{proj}=39$ MeV/A, we see that multiplicity is still underestimated in SMF but becomes fully compatible with data for higher energies. The average Z_{frag} values are in good agreement with the data at all energies. However, it should be noticed that more stringent constraints on the completeness of the selected events could lead to larger experimental values.

For both observables, the width of the distribution is underestimated in SMF and the general trend is that the high value tail of the distributions is less well reproduced (see the middle panels, where these distributions are shown for $E_{proj}=45\text{MeV/A}$). This indicates that the most explosive events are less present in the SMF calculations, pointing to a too intense primary nucleon emission during the fragmentation process. In the right panels are plotted the charge distribution of the biggest fragment (Z_{max}) and of all the other fragments (Z_{rest}), at 45 meV/A, as obtained in the simulations and in the data. The comparison is rather good, showing that the sharing of charge among fragments is well managed by the SMF approach. This feature is all the more important, as the good reproduction of the whole distribution of the charge of the biggest fragment is mandatory in the study of signature of phase transition or critical phenomena done in experimental analyses[41, 42].

On figure 5, we show the kinematic properties of fragments, looking at the evolution of mean velocity with charge. For all energies, we observe that SMF+SIMON calculations underestimate the values observed in the INDRA data. This was already observed looking at fragment kinetic energies [43]. From this observation, we propose to estimate the amount of missing expansion energy. As the trend is similar and charge partitions are well reproduced, we make the assumption that the fragment spatial configuration at the freeze-out is close to the one that one should have in the experiment [31]. If so, the final Coulomb repulsion contributes in the same way to the velocity spectra of fragments.

Thus we look at the fragment distribution at $t = 260$ fm/c and, using the same method described in Section 2.3, we extract the radial expansion energy (E_0 , eqs. from 3 to 6) and the corresponding β_{SMF} . Then, to evaluate the radial expansion energy which should be present at $t=260$ fm/c in order to reproduce the experimental data, we calculate the difference, β_{clb} , between the final velocity and β_{SMF} ($\beta_{clb} = \beta_{SMF+SIMON} - \beta_{SMF}$) and finally we extract $\beta_{prim} = \beta_{exp} - \beta_{clb}$. In this way we deduce the quantity E_0^{prim} which is an estimation of what the radial expansion energy should be at freeze-out time to reproduce the mean values observed in the experimental data. In table II, values are reported for the three bombarding energies (39, 45 and 50 MeV/A). Estimates of E_0 performed by Piantelli and co-workers [22], based on a different analysis, are also added and look in good agreement with the present work.

Putting together all the results shown in Sections 2 and 3, we clearly observe in the SMF calculations a transition between sequential de-excitation and full multifragmentation around 39 MeV/A. At lower energies, the radial expansion energy is not sufficient to bring the observed nascent partitions to a final multifragmentation of the system. At the

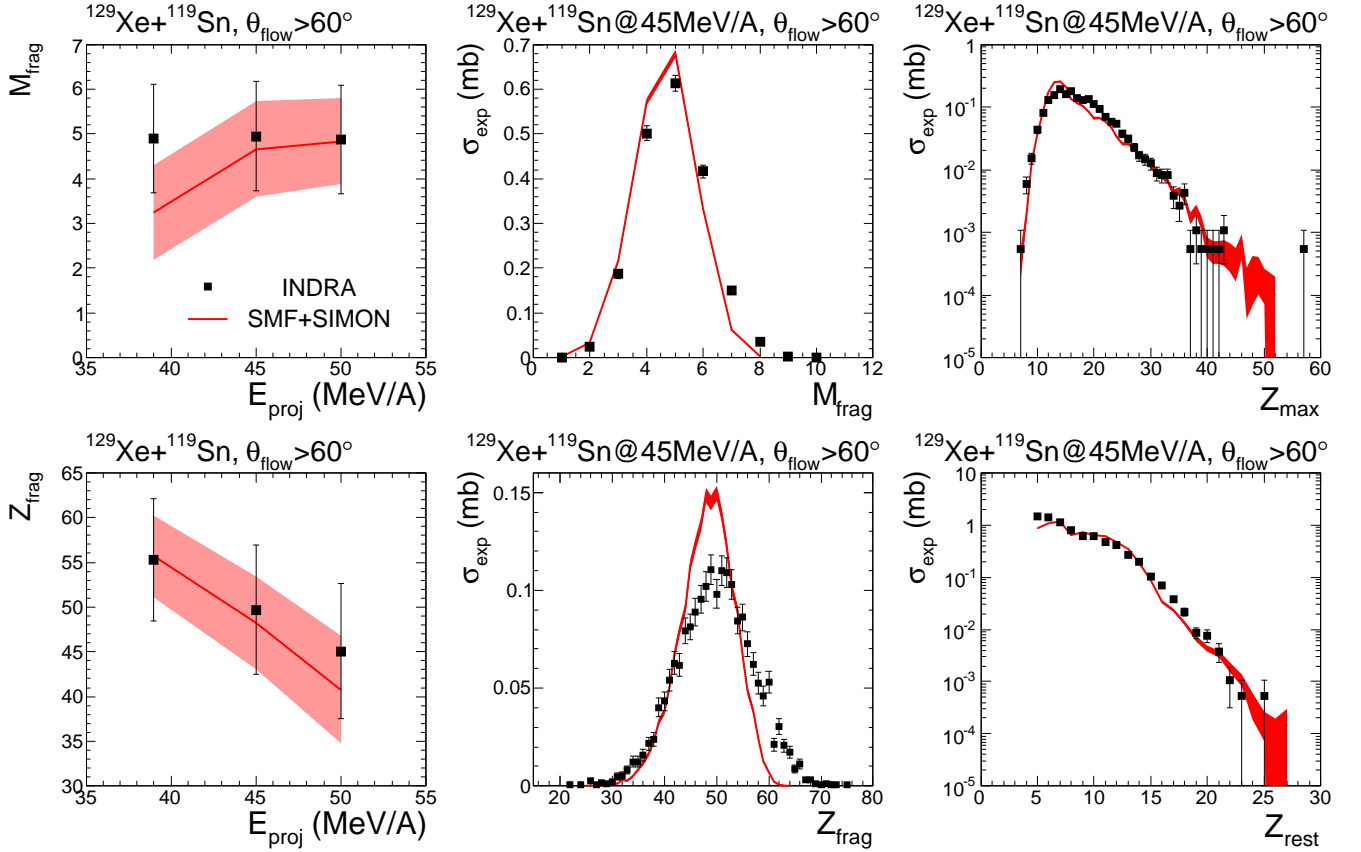


FIG. 4: Comparison between INDRA (black full squares) and SMF+SIMON (full red line) data. The same θ_{flow} cut is applied to select central collisions. **Left panels** : Evolution with bombarding energy (E_{proj}) of the mean values of fragment multiplicity (M_{frag} , top) and charge bound in fragments (Z_{frag} , bottom); error bars indicate the standard deviation of distributions. **Middle panels** : Distribution of the fragment multiplicity (M_{frag} , top) and charge bound in fragments (Z_{frag} , bottom). **Right panels** : Charge distribution of the biggest fragment (Z_{max} , top) and of the other fragments (Z_{rest} , bottom). For the experimental distributions, the Y-axis scale is in mb, and calculations are scaled on it.

E_{proj}	$E_0^{\rho=\rho_{init}}$	$E_0^{t=260}$	$R_0^{t=260} (fm)$	E_0^{prim}	[22]
39	1.65	0.26	6.4	0.56	$0.9^{+0.45}_{-0.45}$
45	2.73	0.65	10.4	1.42	$1.1^{+0.55}_{-0.55}$
50	3.30	0.92	12.7	2.36	$1.7^{+0.20}_{-0.55}$

TABLE II: **From left to right** : expansion energy at the time when the system goes back to normal density, after the compression phase (see section II C for details); expansion energy at $t=260$ fm/c with associated root mean square radius of fragment distribution in r space; estimation of what should be at $t=260$ fm/c the expansion energy to reproduce experimental fragment velocities; **the last column** displays the expansion energy values taken from [22].

same energies, fusion and orbiting effects are overestimated at larger impact parameters. Two features can explain this behavior. The additional expansion driven by the thermal pressure is not well treated. Secondly (but related to this), the expansion phase of the system, where fluctuations should develop, could be too dissipative in terms of light particle emission. Anyhow, we believe that the analysis considered here, which couples a detailed study of ingredients and limitations of the model to a realistic comparison of observables, should improve our comprehension of the role of the radial expansion energy along the multifragmentation process.

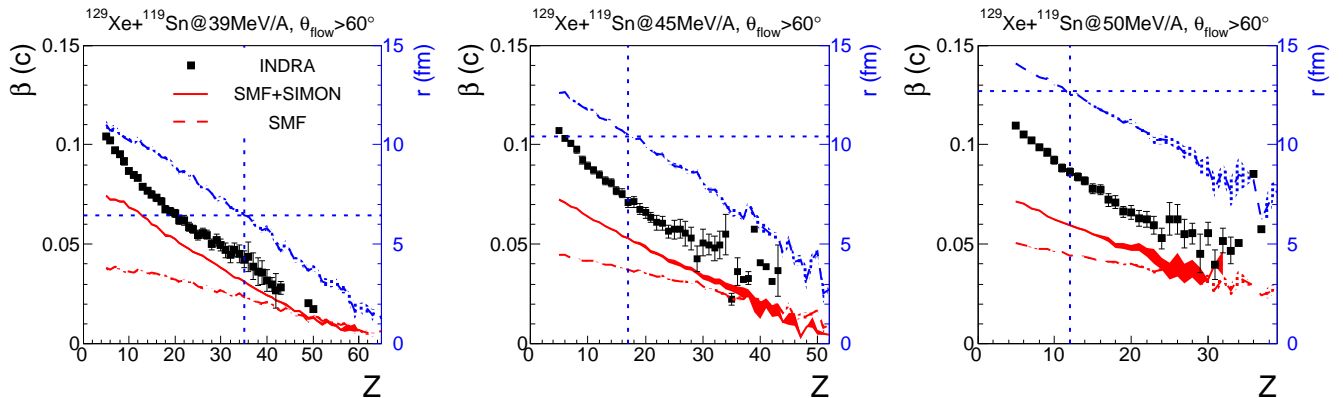


FIG. 5: **From left to right** : energies 39, 45 and 50 MeV/A, the same θ_{flow} cut is applied to select central collisions. Evolution of the mean values of velocity (β in c unit) of fragments with respect to their charge (Z) : black full squares are for INDRA data, dashed red line for SMF data at $t=260$ fm/c and full red line for SMF+SIMON data; in addition the blue line shows the evolution of the mean values of the position of fragments (r in fm, right axis) with respect to their charge (Z). The horizontal dashed blue line indicates the value of the root mean square radius of fragment distribution in r space (R_0 in fm) at $t=260$ fm/c and the vertical line indicates the value of the charge of the fragments located, on average, at this position.

IV. STOPPING POWER ANALYSIS: COMPARISON BETWEEN SIMULATIONS AND DATA

The stopping power in nuclear collisions measures the efficiency of conversion of the initial beam energy into transverse directions and it is a useful tool to investigate the interplay between mean-field (one-body) properties and two-body correlations such as nucleon-nucleon collisions. This observable has been experimentally investigated at relativistic [26] and intermediate [27] bombarding energies. At relativistic energies [26], maximum stopping is reached between 0.2 and 0.8 GeV/A for heavy systems (Au+Au), with a shift to higher energies for smaller systems. In coincidence, a maximum side-flow is also measured, making coherent the picture of the initial beam energy converted into transverse energy.

We will now discuss the stopping analysis on the Xe+Sn system at intermediate energies. The authors of Ref.[27] aimed at measuring the stopping power in nuclear systems formed in heavy ion symmetric collisions. They adopt the isotropy ratio (R_E , eq. 10) as related observable and use the total charged particle multiplicity (M_{tot}) to sort the events according to their degree of dissipation [52]:

$$R_E = \frac{1}{2} \frac{\sum_{i=1}^{M_{tot}} E_{\perp}^{(i)}}{\sum_{i=1}^{M_{tot}} E_{\parallel}^{(i)}} \in [0; \infty[\quad (10)$$

where E_{\parallel} and E_{\perp} denote, respectively, the parallel and transverse energy of the detected particles. For each bombarding energy, the events corresponding to the largest multiplicity (M_{tot}) region, where $\langle R_E \rangle$ is rather constant, are considered. Then the associated average R_E value is extracted. The evolution of R_E , as a function of the bombarding energy, is reported in the right panel of figure 6 (black full squares). Starting at $E_{proj}=12$ MeV/A, a R_E value close to 1 is observed, indicating a complete stopping, whereas, increasing the bombarding energy, the ratio decreases and reaches a minimum, around 0.55, at 40 MeV/A. A small increase to 0.6, at 100 MeV/A, is finally observed. From these results, it was argued that, in the Fermi energy domain, stopping is not achieved because mean-field dissipation is not sufficient and that, starting from 40 MeV/A, the effect of in-medium nucleon-nucleon collisions becomes predominant, increasing the degree of stopping.

Recently, results from IQMD calculations, performed for the same reactions, have been reported in [44]. The authors apply the same selection, as considered in the data analysis, to the simulated events, and show that this leads to impact parameter mixing. Moreover, in Ref.[44] it was stressed that fragment configurations, rather than the nucleon phase space, have to be used in order to compare with the experimental results. Such link between clusterization and stopping evaluation is also reported in [45]. Finally, a qualitative agreement with the general trend of the data is observed, however the minimum of R_E appears at higher energies (with a shift of 20 MeV/A) and the rise at bombarding energies of 100-150 MeV/A is more pronounced.

In the following we will present the results obtained within the SMF + SIMON approach. From the flow angle distribution studied in the previous Section (fig.3), we have already observed favored prolate orientation for events

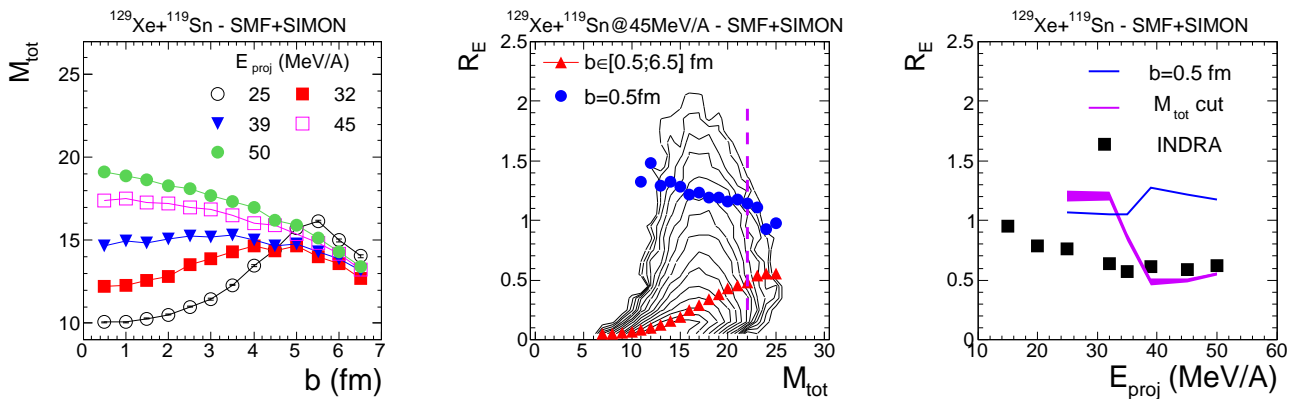


FIG. 6: **Left panel** : evolution of total multiplicity (M_{tot}) with the impact parameter; **middle panel** : for $E_{proj} = 45 \text{ MeV/A}$, correlation between the isotropic ratio (R_E) and M_{tot} in black contours (logarithmic scale), the full red triangles are the deduced profile. The profile for $b=0.5 \text{ fm}$ is plotted in blue circles. The vertical violet dashed line indicate where the M_{tot} cut is performed (see text for details); **right panel** : evolution with bombarding energies (E_{proj}) of mean values of R_E for $b=0.5 \text{ fm}$ (blue line) and for events selected using the M_{tot} cut (violet line). INDRA data, taken from [27], are plotted in black squares.

at small impact parameters, indicating the presence of full stopping and a loss of the entrance channel memory. To complete this observation, we perform an analysis similar to the one in [27], on the impact parameter range [0.5; 6.5] fm.

First, on the left panel of figure 6, we show the evolution of M_{tot} (which excludes pre-equilibrium particles) with the impact parameter (b). A different behavior is observed for energies below and above 39 MeV/A with first an increasing and then a decreasing trend of M_{tot} with respect to b . At small bombarding energies, the largest M_{tot} is observed at large impact parameters ($b = 5 - 6 \text{ fm}$), corresponding to high spin sequential splitting, whereas the opposite holds at high bombarding energies. We notice that at the “transition energy” (39 MeV/A) we also observe a transition, at small impact parameters, from sequential decay of heavy residue to multifragmentation events. The middle panel of figure 6 shows the correlation between R_E and M_{tot} , as proposed in [27], at $E_{proj}=45 \text{ MeV/A}$. We observe the same trend, as seen in the data, for the global population of the diagram (black contour plot) and for the mean (red full triangles) : saturation of R_E for the highest M_{tot} values and large fluctuations for multiplicities around half of the maximum reached value. However, this picture is valid for bombarding energies above 39 MeV/A, whereas, at lower energies, the trend of R_E as a function of M_{tot} is rather flat, in the considered impact parameter range. Indeed low multiplicity corresponds to small impact parameters (see left panel) and at larger impact parameters (large M_{tot} in this case) the dynamics is still rather dissipative, thus $R(E)$ is around 1 in all cases.

We also plot the same correlation just considering $b=0.5 \text{ fm}$ (blue points). We observe that a wide M_{tot} region is populated and that R_E values are greater than 1, indicating that full stopping is achieved for the most central collisions [53].

On the right panel we report the R_E mean values, corresponding to $b=0.5 \text{ fm}$, for all bombarding energies (blue lines). An almost flat behaviour is observed. To perform a similar M_{tot} cut in the SMF events, applicable to the whole beam energy range, we consider the value of M_{tot} above which the cross section of the selected events is equal to the value associated with $b=0.5 \text{ fm}$ (which corresponds to 3% of the simulated cross section). On the middle panel, the violet vertical line indicates the M_{tot} cut obtained at $E_{proj} = 45 \text{ MeV/A}$. The violet line on the right panel represents the evolution of R_E with bombarding energies, according to this selection. Results from [27] are reported as black full squares. At the lowest energies, values are still close to one indicating important dissipative and orbiting effects at large impact parameters. Then, increasing the beam energy up to 39 MeV/A, R_E decreases, but this is due to the impact parameter mixing and to the contribution of intermediate impact parameters. In fact, as one can see on the left panel of Fig.6, at 39 MeV/A the total multiplicity exhibits a rather flat behavior with b . Clearly, for mid-central collisions, the reaction dynamics becomes more transparent, leading to a reduction of R_E . The impact parameter mixing is less pronounced at beam energies larger than 39 MeV/A, where the total multiplicity decreases significantly with b . This leads to the small increase observed for R_E on the right panel.

In the low beam energy region, the results overestimate the data due to the overestimation of mean-field dissipation. In the high beam energy region, where complete multifragmentation is achieved, SMF events reproduce well the experimental data, with values between 0.5 and 0.7. As discussed above, here the very central collisions (multifragmentation events) lead to the highest values of M_{tot} , but we still observe contributions from larger impact parameters.

Looking at the right panel of Fig.6 (violet line), the simulation results appear shifted to the right, with respect to the data. A similar shift has been observed for the multifragmentation threshold. In fact, the results obtained for R_E in the simulations (a decrease followed by a mild increase) can be associated with the transition from statistical sequential decay of equilibrated sources, dominating at the lowest energies over the whole range of considered impact parameters, to full multifragmentation of central collisions, observed at the highest beam energies. The same mechanism could be present in the data, but with a lower “transition” beam energy (around 20 MeV/A).

Finally, we stress that, according to our simulations, the behavior obtained for R_E (Fig.6, violet line) comes essentially from the fact that the event selection based on the M_{tot} cut-off induces some impact parameter mixing. Indeed, looking at the results corresponding to $b=0.5$ fm, we can conclude that full stopping is achieved in central collisions at Fermi energies, in the beam energy range considered.

Thus the centrality selection in experimental data has to be carefully considered before proper conclusions can be drawn.

V. CONCLUSION

The issue of the link between the compression-expansion cycle, the collective radial expansion and the multifragmentation pattern observed in central collisions at Fermi energies has been addressed comparing the predictions of the semi-classical SMF transport model to INDRA multifragmentation data.

The simulations allow one to extract the maximum radial expansion energy reached in reactions at bombarding energies in the Fermi domain. This can be used as a reference in flow estimation analyses based on statistical models. Looking at the time evolution of fragment formation, we show that for all considered energies above 32 MeV/A, density fluctuations occur and lead to pre-fragment formation already at $t=100$ fm/c. These nascent partitions have then different stories depending on the strength of the velocity fields. For energies below 39 MeV/A, the nascent partitions do not survive, leading to evaporation residue or fission fragments in the exit channel, while for higher energies, one observes multifragmentation events. Looking at the properties of these events, we obtain a good reproduction of data as far as the charge partitions are concerned. Concerning kinematical properties, we observe and quantify the underestimation of velocities which suggests a weakening of initial radial expansion along the fragment formation process, due to the lack of thermal pressure effects, which is a typical drawback of semi-classical models.

We have also investigated the issue of stopping power in nuclear reactions and performed the same analysis proposed in [27]. We observe that for very central collisions, $b=0.5$ fm full stopping is achieved at all energies. However, if a selection of centrality is done as in the experimental data, we recover the experimental results, which exhibit a lesser degree of stopping. We then pointed out the essential coherence needed in the comparison between data and microscopic simulations in order to give unbiased indications on the microscopic ingredients of the considered models. Within our approach a good reproduction of the experimental data, at beam energies above the multifragmentation threshold, is obtained by employing the free (angle and energy dependent) NN cross section and a soft EOS (compressibility $K = 200$ MeV).

Following the definition given in experimental studies, we find that the evolution of the R_E ratio with the beam energy can be associated with a change in the fragmentation mechanism, from statistical decay to prompt multifragmentation. At the highest bombarding energies central events, where large fragment multiplicities are observed, start to dominate the selection experimentally considered (based on particle multiplicity cuts), thus leading to the small increase observed for the stopping power. The simulation results appear shifted with respect to the experimental data, in analogy with the shift to higher energies observed, in the model, for the multifragmentation threshold.

We conclude by mentioning that, in the framework of mean-fields approaches, new methods to improve the treatment of fluctuations, in the isovector channel [46] and in full phase space [47], have recently been introduced. A more effective fluctuating term is expected to lead to a faster fragmentation process, thus lowering the fragmentation threshold and enhancing fragment velocities. Further studies, based on the comparison with experimental data, are in progress.

VI. ACKNOWLEDGMENTS

The authors thank the INDRA Collaboration for providing them the high quality data presented in this work. They also thank M.F. Rivet for fruitful discussions. E.B. acknowledges the IN2P3 Computing Centre for providing huge amounts of CPU time and data storage for the calculations.

-
- [1] J.M. Lattimer and M. Prakash, Phys. Rep. **442**, 109 (2007); A.W. Steiner, J.M.Lattimer, E.F. Brown, Astrophysical Journal **722**, 33 (2010).
- [2] P. Danielewicz, R. Lacey and W.G. Lynch, Science **298**, 1592 (2002).
- [3] G.Ferini *et al.*, Phys. Lett. B **670**, 325 (2009) and refs. therein.
- [4] P. Chomaz, M. Colonna and J. Randrup, Phys. Rep. **389**, 263 (2004).
- [5] S.C. Jeong *et al.*, Phys. Rev. Lett. **72**, 3468 (1994).
- [6] W.C. Hsi *et al.*, Phys. Rev. Lett. **73**, 3367 (1994).
- [7] G. Poggi *et al.*, Nucl. Phys. A **586**, 755-776 (1995).
- [8] B. Borderie, M.F. Rivet, Progr. in Part. and Nucl. Phys. **61** (Book Series), 551 (2008) and refs. therein.
- [9] Q. Li *et al.* Phys. Rev. C **83**, 044617 (2011).
- [10] K. Hagel *et al.*, Phys. Rev. C **50**, 2017 (2013); Phys. Rev. C **62**, 034607 (2000).
- [11] S. Chikazumi *et al.*, Phys. Lett. B **476**, 273-278 (2000).
- [12] S. Pal *et al.*, Nucl. Phys. A **608**, 49-62 (1996); Nucl. Phys. A **586**, 466-482 (1995).
- [13] J. López *et al.*, Nucl. Phys. A **512**, 345-364 (1990).
- [14] F. Gulminelli *et al.*, Phys. Rev. E **76**, 051120 (2007).
- [15] A. H. Raduta *et al.*, Phys. Rev. C **55**, 1344 (1997).
- [16] D.H.E. Gross, Rep Prog. Phys. **53**, 605 (1990).
- [17] J. Bondorf *et al.*, Phys. Rep. **257**,133 (1995).
- [18] N. Marie *et al.*, Phys. Lett. B **391**, 15-21 (1997); Phys. Rev. C **58**, 256 (1998).
- [19] S. Hudan *et al.*, Phys. Rev. C **67**, 064613 (2003).
- [20] N. Bellaize *et al.*, Nucl. Phys. A **709**, 367-391 (2002).
- [21] A. Lefevre *et al.*, Nucl. Phys. A **735**, 219-247 (2004).
- [22] S. Piantelli *et al.*, Phys. Lett. B **627**, 18-25 (2005); Nucl. Phys. A **809**, 111-128 (2008).
- [23] L. Beaulieu *et al.*, Phys. Rev. C **64**, 064604 (2001).
- [24] C. B. Das *et al.*, Phys. Rev. C **70**, 064610 (2004).
- [25] E. Bonnet *et al.*, Nucl. Phys. A **816**, 1-18 (2009); Phys. Rev. Lett. **103**, 142701 (2010).
- [26] W. Reisdorf *et al.*, Phys. Rev. Lett. **92**, 232301 (2004).
- [27] G. Lehaut *et al.*, Phys. Rev. Lett. **104**, 232701 (2010).
- [28] M. Colonna *et al.*, Nucl. Phys. A **642**, 449 (1998).
- [29] M. Colonna *et al.*, Nucl. Phys. A **742**, 337 (2004).
- [30] M.F. Rivet *et al.*, Phys. Lett. B **430**, 217-222 (1998).
- [31] G. Tabacaru *et al.*, Nucl. Phys. A **764** 371 (2006).
- [32] V. Baran *et al.*, Nucl. Phys. A **703**, 603 (2002).
- [33] V. Baran, M. Colonna, V. Greco and M. Di Toro, Phys. Rep. **410**, 335 (2005).
- [34] D. Durand, Nucl. Phys. A **541**, 266 (1992).
- [35] G. Bizard *et al.*, Phys. Lett. B **302**, 162 (1993); E. Bauge, *et al.*, Phys. Rev. Lett. **70**, 3705 (1993).
- [36] L. Beaulieu *et al.*, Phys. Rev. Lett. **84**, 5971 (2000); Z. Y. He *et al.*, Phys. Rev. C **65**, 014606 (2001).
- [37] L. Manduci *et al.*, Nucl. Phys. A **811** 93 (2008).
- [38] D. Gruyer *et al.*, e-print <http://arxiv.org/abs/1309.7779> (2013).
- [39] D. Lacroix *et al.*, Nucl. Phys. A **636**, 85-110 (1998).
- [40] S. Kox *et al.*, Nucl. Phys. A **420**, 162-172 (1984).
- [41] E. Bonnet *et al.*, Phys. Rev. Lett. **103**, 072701 (2009).
- [42] D. Gruyer *et al.*, Phys. Rev. Lett. **110**, 172701 (2013).
- [43] F. Gagnon-Moisan *et al.*, Phys. Rev. C **86**, 044617 (2012).
- [44] G. Q. Zhang *et al.*, Phys. Rev. C **84**, 034612 (2011).
- [45] Y. Zhang *et al.*, Phys. Rev. C **85**, 051602R (2012).
- [46] M. Colonna, Phys. Rev. Lett. **110**, 042701 (2013).
- [47] P. Napolitani *et al.*, Phys. Lett. B **726**, 382 (2013).
- [48] It has to be noted that to compute maximum multiplicity and associated time only events having, at a given time, two or more fragments, are taken into account.
- [49] The reaction cross section values are in the range [5.7;6.0] barn, with an associated maximum impact parameter in the range [13.4,13.8] fm.
- [50] For $E_{proj}=25$ MeV/A, the maximum of the selected cross section distribution is located at $b=5$ fm.
- [51] The overestimation is less important for 25 MeV/A than 32 MeV/A, because for 25 MeV/A, INDRA detector is more efficient to detect the so-called complete events.
- [52] In this work and related ones, the isotropic ratio is also computed with the linear momentum : $R_p = 2/\pi \sum_{i=1}^{M_{tot}} p_{\perp}^{(i)} / \sum_{i=1}^{M_{tot}} p_{\parallel}^{(i)}$. To keep it simple, we only use in the present analysis the R_E ratio and discuss results and comparisons assuming that these two ratios give the same quantitative results.
- [53] The computation of R_E for $b=0.5$ fm case is done on all events while for the other cases it has been computed event by event. This allows to avoid spurious fluctuations due to the ratio between small numbers, especially at lower bombarding

energies where, in the majority of events, there is a big residue located near the center of mass.