



HAL
open science

Bounding the number of remarkable values via Jouanolou's theorem

Guillaume Chèze

► **To cite this version:**

Guillaume Chèze. Bounding the number of remarkable values via Jouanolou's theorem. *Journal of Differential Equations*, 2015, 10.1016/j.jde.2015.01.027 . hal-00869805v2

HAL Id: hal-00869805

<https://hal.science/hal-00869805v2>

Submitted on 12 Feb 2015

HAL is a multi-disciplinary open access archive for the deposit and dissemination of scientific research documents, whether they are published or not. The documents may come from teaching and research institutions in France or abroad, or from public or private research centers.

L'archive ouverte pluridisciplinaire **HAL**, est destinée au dépôt et à la diffusion de documents scientifiques de niveau recherche, publiés ou non, émanant des établissements d'enseignement et de recherche français ou étrangers, des laboratoires publics ou privés.

BOUNDING THE NUMBER OF REMARKABLE VALUES VIA JOUANOLOU'S THEOREM

GUILLAUME CHÈZE

ABSTRACT. In this article we bound the number of remarkable values of a polynomial vector field. The proof is short and based on Jouanolou's theorem about rational first integrals of planar polynomial derivations. Our bound is given in term of the size of a Newton polygon associated to the vector field. We prove that this bound is almost reached.

INTRODUCTION

In this paper we study polynomial differential systems in \mathbb{C}^2 of this form:

$$\frac{dX}{dt} = A(X, Y), \quad \frac{dY}{dt} = B(X, Y),$$

where $A, B \in \mathbb{C}[X, Y]$ are coprime and $\deg(A), \deg(B) \leq k$.

We associate to these polynomial differential systems the polynomial derivations $D = A(X, Y)\partial_X + B(X, Y)\partial_Y$.

The computation and the study of rational first integrals of such polynomial differential systems is an old and classical problem. We recall that a rational first integral is a rational function $f/g \in \mathbb{C}(X, Y)$ such that the curves $\lambda f - \mu g = 0$, where $(\lambda : \mu) \in \mathbb{P}^1(\mathbb{C})$, give orbits of the differential system. Thus it is a function $f/g \in \mathbb{C}(X, Y)$ such that $D(f/g) = 0$.

When we study rational first integrals, we can always consider a rational first integral f/g with a minimum degree. We recall that the degree of f/g is equal to the maximum of $\deg(f)$ and $\deg(g)$.

Rational first integrals with minimum degree are *indecomposable* rational functions. We recall that a rational function is *decomposable* when it can be written $u(h)$ where $u \in \mathbb{C}(T)$, $h \in \mathbb{C}(X, Y)$ and $\deg(u) \geq 2$, otherwise f/g is said to be *indecomposable*. Sometimes indecomposable rational functions are called minimal rational functions.

In 1891, Poincaré has shown that if we consider an indecomposable rational first integral f/g , then the number of $(\lambda : \mu) \in \mathbb{P}^1(\mathbb{C})$ such that $\lambda f - \mu g$ is reducible in $\mathbb{C}[X, Y]$ or $\deg(\lambda f - \mu g) < \deg(f/g)$, is finite. Poincaré called these kind of values $(\lambda : \mu)$: *remarkable values*. Poincaré was interested by the intersection of different level sets of a given rational first integral. He has also shown how to use remarkable values in order to study the inverse integrating factor, see [33]. Recently, new results have been given in this direction, see [10, 19, 20, 14, 17]. In [22, 21], remarkable values are used to study systems with polynomial first integrals. In [2] they

are used to study degenerate singular points. They also plays a role in an algorithm computing the decomposition of multivariate rational functions, see [11], and in another algorithm computing rational first integrals with bounded degree, see [6].

Poincaré has shown, when all the singular points of the polynomial vector field are distinct, that the number of remarkable values is bounded by the number of saddle points plus 2, see [33]. Then a direct application of Bezout's theorem shows that the number of remarkable values is bounded by $k^2 + 2$.

Since Poincaré, a lot of authors, see below, have given bounds about the number of remarkable values and have studied the problem of reducibility in a pencil of algebraic curves. To the best of our knowledge all these bounds are given in term of the degree d of the rational function f/g . Even if there exists a relation between k and d , see below, this means that a geometric point of view about the pencil $\lambda f - \mu g$ is generally used. In this note, we consider the pencil $\lambda f - \mu g$ as level sets of a rational first integrals. With this point of view we can use results about rational first integrals and get easily a new bound about the number of remarkable values. Furthermore, our strategy allows us to give a bound on the *total order of reducibility*. This number is defined in the following way:

We denote by f^h and g^h the homogeneous polynomial of degree $\deg(f/g)$ in $\mathbb{C}[X, Y, Z]$ associated to f and g and we set:

$$\sigma(f, g) = \{(\lambda : \mu) \in \mathbb{P}^1(\mathbb{C}) \mid \lambda f^h - \mu g^h \text{ is reducible in } \mathbb{C}[X, Y, Z]\}.$$

This set is called the *spectrum* of f/g .

We have introduced the homogeneous polynomial f^h and g^h in order to have a uniform definition for the remarkable values. The situation where $\deg(\lambda f - \mu g)$ is smaller than $\deg(f/g)$ corresponds to the situation where Z divides $\lambda f^h - \mu g^h$. Thus, by definition of the spectrum, *the spectrum is the set of all remarkable values*.

If $(\lambda : \mu) \in \sigma(f, g)$ then we have

$$\lambda f^h - \mu g^h = \prod_{i=1}^{n(\lambda:\mu)} (f_{(\lambda:\mu),i}^h)^{e_{(\lambda:\mu),i}},$$

where $f_{(\lambda:\mu),i}^h$ is the homogeneous polynomial in $\mathbb{C}[X, Y, Z]$ associated to the irreducible factor $f_{(\lambda:\mu),i}$ of $\lambda f - \mu g$. The *total order of reducibility* is

$$\rho(f, g) = \sum_{(\lambda:\mu) \in \sigma(f,g)} (n(\lambda:\mu) - 1).$$

For example, if $f = Y$ and $g = X^2$ then $\sigma(f, g) = \{(0 : 1), (1 : 0)\}$. Indeed, X^2 is reducible and $1 = \deg(f) < \deg(f/g) = 2$. Moreover, $f^h = Y.Z$, then $n(1 : 0) = 2$ and $g^h = x^2$ then $n(0 : 1) = 1$. Thus $\rho(f, g) = (2 - 1) + (1 - 1) = 1$ and with this example we have: $\rho(f, g) < |\sigma(f, g)|$.

We get this inequality because X^2 is reducible and has not distinct irreducible factors. Thus if we want to bound the number of remarkable values with $\rho(f, g)$ we have to also add the number of $(\lambda : \mu) \in \mathbb{P}^1(\mathbb{C})$ such that $\lambda f^h - \mu g^h$ is a pure power. Then we introduce:

$$\gamma(f, g) = \{(\lambda : \mu) \in \mathbb{P}^1(\mathbb{C}) \mid \lambda f^h - \mu g^h = P^e \text{ where } e > 1 \text{ and } P \in \mathbb{C}[X, Y, Z]\}.$$

Furthermore the number of elements in $\gamma(f, g)$ is smaller or equal to 3, see [24, 7, 1] for a proof and [1, Remark 8] for an example where the bound is reached.

Remark 1. We have:

$$|\sigma(f, g)| \leq \rho(f, g) + |\gamma(f, g)| \leq \rho(f, g) + 3.$$

Thus we are going to bound $\rho(f, g)$ and it will give a bound on the number of remarkable values.

As our theorem uses Newton polygons, we recall that the Newton polygon of a Laurent polynomial $f(X, Y) = \sum_{\alpha, \beta} c_{\alpha, \beta} X^\alpha Y^\beta$, where $(\alpha, \beta) \in \mathbb{Z}^2$, is the convex hull in \mathbb{R}^2 of the exponents (α, β) of all nonzero terms of f .

Theorem 2. *Let $D = A(X, Y)\partial_X + B(X, Y)\partial_Y$ be a derivation, such that $\deg(A), \deg(B) \leq k$, and let $f/g \in \mathbb{C}(X, Y)$ be an indecomposable rational function which is a first integral of D .*

Consider a generic point (x, y) in \mathbb{C}^2 and the Newton polygon N_D associated to the Laurent polynomial $x\frac{A(X, Y)}{X} + y\frac{B(X, Y)}{Y}$, and denote by \mathcal{B} the number of integer points in $N_D \cap \mathbb{N}^2$, then:

$$\rho(f, g) < \mathcal{B} + 2.$$

Theorem 2 is well suited for "sparse" derivations i.e. when some coefficients of A and B are equal to zero. For example when we consider polynomials A and B of this form: $c_{e,e}X^eY^e + c_{e-1,e}X^{e-1}Y^e + c_{e,e-1}X^eY^{e-1} + c_{0,0}$, where e is an integer strictly bigger than 1, then $\mathcal{B} = 3e + 2$, and $k = \deg(A) = \deg(B) = 2e$. Thus for such examples Theorem 2 gives a linear bound in e . Then *the bound is linear* in the degree of the derivation.

The Newton polygon associated to these polynomials A and B is given in Figure 1. The Newton polygon N_D associated to this example is given in Figure 2. In these figures, small points correspond to coefficients equal to zero.

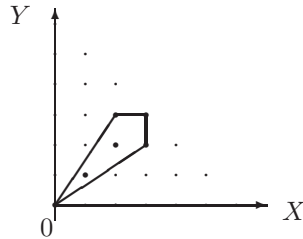
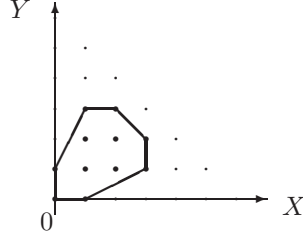


FIGURE 1. Newton polygon $\mathcal{N}(c_{3,3}X^3Y^3 + c_{2,3}X^2Y^3 + c_{3,2}X^3Y^2 + c_{0,0})$

FIGURE 2. The associated Newton polygon N_D .

If we consider dense polynomials A, B with degree k , that is to say each coefficient of A and B is nonzero, then $\mathcal{B} = k(k+1)/2$. We get then a *quadratic bound* (in term of the degree k of the derivation) on $\rho(f, g)$.

As the number of remarkable values is $|\sigma(f, g)|$ then by Remark 1 we get:

Corollary 3. *With the previous notations, we have:
The number of remarkable values is smaller than $\mathcal{B} + 2 + |\gamma(f, g)|$, more precisely*

$$|\sigma(f, g)| < \mathcal{B} + 2 + |\gamma(f, g)| \leq \mathcal{B} + 5.$$

This bound is almost reached. Indeed, consider:

$$D = (X^k - 1)\partial_X - (kX^{k-1}Y + 1)\partial_Y$$

An indecomposable polynomial first integral of D is $f(X, Y) = Y(X^k - 1) + X$. The remarkable values associated to D are $(1 : \omega)$ where $\omega^k = 1$ and $(0 : 1)$. Indeed, here the denominator g is equal to 1, thus $\deg(0f - 1g) = \deg(1) < \deg(f/g)$. We deduce that in this situation $k + 1 \leq |\sigma(f, 1)|$. Furthermore, for this derivation we have $\mathcal{B} = k$, then by Remark 1, this gives

$$\mathcal{B} + 1 \leq |\sigma(f, 1)| \leq \rho(f, 1) + |\gamma(f, 1)|.$$

Here $|\gamma(f, 1)| = 1$, because $0f^h - 1g^h = Z^{k+1}$. The point $(0 : 1)$ is the only possible point in $\gamma(f, 1)$. Indeed, if $(\lambda : \mu) \neq (0 : 1)$ and $(\lambda : \mu) \in \gamma(f, 1)$ then by definition we have $\lambda f - \mu = P^c$. As this implies f decomposable, we deduce that $|\gamma(f, 1)| = 1$. Then Corollary 3 gives

$$\mathcal{B} + 1 \leq |\sigma(f, 1)| < \mathcal{B} + 3.$$

Thus the bound is almost reached.

We can also remarked that in this example we have $\rho(f, 1) = \mathcal{B}$, and Theorem 2 give $\rho(f, 1) \leq \mathcal{B} + 1$.

At last, we remark that we can always consider a rational function f/g as a rational first integral. Indeed, f/g is a rational first integral of the jacobian derivative

$$D_{f/g} = A_{f/g}\partial_X - B_{f/g}\partial_Y,$$

where

$$A_{f/g} = \frac{\partial_Y(f)g - f\partial_Y(g)}{\gcd(\partial_Y(f)g - f\partial_Y(g), \partial_X(f)g - f\partial_X(g))}$$

and

$$B_{f/g} = \frac{\partial_X(f)g - f\partial_X(g)}{\gcd(\partial_Y(f)g - f\partial_Y(g), \partial_X(f)g - f\partial_X(g))}.$$

Thus if we want to study the reducibility in the pencil $\lambda f - \mu g$ then we can always suppose that f/g is an indecomposable rational first integral of a derivation.

Related results. The study of remarkable values corresponds to the study of the irreducibility in a pencil of algebraic plane curves. It is an old problem and it has been widely studied since Bertini, see [26]. It seems that Bertini and Poincaré has proved independently the following result:

Theorem 4. *The spectrum associated to an indecomposable rational function is finite.*

To the best of our knowledge, the first author, after Poincaré, who has given a bound on the spectrum was Ruppert, in [34]. He has shown that the number of remarkable values associated to an indecomposable rational function of degree d is smaller than $d^2 - 1$. Ruppert's strategy is based on the computation of the first de Rham's cohomology group of the complementary of a plane curve. This approach gives an effective method to compute the spectrum.

Lorenzini has also studied the spectrum of a rational function in [29] and he has shown that $\rho(f, g) \leq d^2 - 1$.

In [7], the authors have used Ruppert's approach and have shown that the bound $d^2 - 1$ still works if we take into account the multiplicities of the factors.

Theorem 2 can be seen as a counterpart of this bound with multiplicities. Indeed, in [33], Poincaré has introduced the remarkable factor

$$R(X, Y) = \prod_{(\lambda:\mu) \in \sigma(f,g)} \prod_{i=1}^{n(\lambda:\mu)} f_{(\lambda:\mu),i}^{e_{(\lambda:\mu),i}-1}$$

and has also given the following relation:

$$\deg(f) + \deg(g) - 1 = k + \deg(R).$$

For a proof of this equality, we can read [19].

Thus a bound in term of the degree of the rational function which takes into account the multiplicities of the irreducible factors is in the same vein than a bound in term of the degree k of the vector field. The contribution of this present paper is to give a short proof which gives a nearly optimal bound in the sparse case.

Stein, in [36], considers the polynomial case. He has shown that $\rho(f, 1) \leq d$. It seems that the word "spectrum" has been introduced by Stein. This expression is also used by other authors. For example this expression is used in [7] because in this paper the set of remarkable values corresponds to the spectrum of a pencil of matrices.

The strategy used by Stein was the following: first construct a rational first integral with some factors $f_{(1:\mu),i}$ and then get a contradiction. The construction of the first integral was obtained with geometrical arguments specific to the polynomial case (i.e. $g = 1$). This approach has been extended to the rational case by Bodin in [3]. The bound obtained is $\rho(f, g) \leq d^2 + d$. In this note, we are going to use the same approach. However, the construction of the rational first integral will be a direct consequence of a theorem due to Jouanolou. This allows to get a bound in term

of k , the degree of the derivation, and not in term of d , the degree of the rational function. Furthermore, our proof is direct and gives a nearly optimal result for sparse derivations.

Some authors have already used the Darboux theory of integrability in order to show that the spectrum is finite. Moulin-Ollagnier, in [30], has proved the finiteness of the spectrum by studying the number of distinct cofactors of a derivation. Moulin-Ollagnier calls the factor $f_{(\lambda;\mu),i}$ "small Darboux polynomials". We can also mention the paper [10], where the authors show with a simple proof using Darboux theory of integrability that the spectrum is finite. Unfortunately, these approaches do not give sharp bounds.

There exist many other papers about the spectrum, for more details read e.g. [4, 5, 31, 32, 8, 1, 25, 37].

Structure of this paper. In Section 1 we recall some results about invariant algebraic curves and Jouanolou's theorem. In Section 2 we recall some classical results used in the proof of Theorem 2. In Section 3, we prove Theorem 2.

Notations. $\mathbb{N} = \{0; 1; 2 \dots\}$ is the set of integer numbers.

$|S|$ is the number of elements in the set S .

In the following k will denote the degree of the derivation and d the degree of a rational first integral.

In this paper, when we consider a rational function f/g , we always suppose that f and g are coprime. Furthermore, we recall that $\deg(f/g)$ means $\max\{\deg(f), \deg(g)\}$.

1. INVARIANT ALGEBRAIC CURVES AND JOUANOLOU'S THEOREM

In 1878, G. Darboux [15] has given a strategy to find first integrals. One of the tools developed by G. Darboux is now called *invariant algebraic curves* and it will be the main ingredient in our proof.

Definition 5. A polynomial f is said to be an invariant algebraic curve associated to D , if $D(f) = \Lambda.f$, where Λ is a polynomial. The polynomial Λ is called the cofactor of f .

There exist a lot of different names in the literature for invariant algebraic curves, for example we can find: Darboux polynomials, special integrals, eigenpolynomials, special polynomials, or second integrals.

A lot of properties of a polynomial differential system are related to invariant algebraic curves of the corresponding derivation D , see e.g. [23, 16].

G. Darboux shows in [15] that *if the derivation D has at least $k(k+1)/2 + 1$ irreducible invariant algebraic curves then D has a first integral which can be expressed by means of these polynomials*. More precisely the first integral has the following form: $\prod_i f_i^{c_i}$ where f_i are invariant algebraic curves and c_i are complex numbers. This kind of integral is called nowadays a Darboux first integral.

If the all the c_i belong to \mathbb{Z} then we have a rational first integral. That is to say a first integral which belongs to $\mathbb{C}(X, Y)$. The relation between rational first integral and invariant algebraic curves is given in the following proposition:

Proposition 6. *If f/g is a rational first integral then for all $(\lambda : \mu) \in \mathbb{P}^1(\mathbb{C})$, $\lambda f - \mu g$ is an invariant algebraic curve and this curve corresponds to the level set $f/g = \mu/\lambda$.*

Furthermore, the irreducible factors $f_{(\lambda:\mu),i}$ of $\lambda f - \mu g$ are also invariant algebraic curves.

Proof. The first part is a straightforward computation. The second part come from the fact that irreducible factors of an invariant algebraic curve are also invariant algebraic curves, see e.g. [16, Proposition 8.4] or [23, Proposition 2.5]. \square

As mentioned before we are going to use a theorem due to Jouanolou. This theorem is the following, see [24]:

Theorem 7. *If a derivation has at least $k(k+1)/2+2$ irreducible invariant algebraic curves then there exist integers $n_i \in \mathbb{Z}$ such that $\prod_i f_i^{n_i} \in \mathbb{C}(X, Y)$ is a rational first integral.*

Several authors have given simplified proof of Jouanolou's theorem. M. Singer proves this result in [35]. A direct proof of Jouanolou's result is also given in [9] and in [16].

Darboux and Jouanolou theorems are improved in [27, 28]. The authors show that we get the same kind of result if we take into account the multiplicity of invariant algebraic curves. The multiplicity of an invariant algebraic curve is defined and studied in [13]. This notion of multiplicity does not correspond to the multiplicity $e_{(\lambda:\mu),i}$ of the irreducible factors of $\lambda f - \mu g$.

Darboux and Jouanolou's theorems have been also studied in the sparse case, i.e. bounds are given in terms of a Newton polytope in [12]. More precisely, the result is the following:

Theorem 8. *If a derivation has at least $\mathcal{B}+2$ irreducible invariant algebraic curves, where \mathcal{B} is defined as in Theorem 2, then there exist integers $n_i \in \mathbb{Z}$ such that $\prod_i f_i^{n_i} \in \mathbb{C}(X, Y)$ is a rational first integral.*

The key point in the proof of this theorem is the study of the Newton polygon of the cofactors for a given derivation, for other results about the structure of the cofactors see [18].

2. INDECOMPOSABLE RATIONAL FUNCTIONS AND REMARKABLE VALUES

Definition 9. We say that a rational function $f/g \in \mathbb{C}(X, Y)$ is *decomposable* if we have $f/g = u(h)$ where $u(T) \in \mathbb{C}(T)$ with $\deg(u) \geq 2$ and $h(X, Y) \in \mathbb{C}(X, Y)$, otherwise f/g is said to be *indecomposable*.

Sometimes indecomposable rational functions are called minimal rational functions.

Remark 10. When $f/g = u(h)$ with h indecomposable, we can suppose that $h = h_1/h_2$ with h_1 and h_2 irreducible in $\mathbb{C}[X, Y]$ and $\deg(h_1) = \deg(h_2)$. Indeed, let $(\lambda_1 : \mu_1), (\lambda_2 : \mu_2) \notin \sigma(h_1, h_2)$, and set $H_i = \lambda_i h_1 - \mu_i h_2$. Then, we have $\deg(H_1) = \deg(H_2) = \deg(h)$, H_1, H_2 are irreducible in $\mathbb{C}[X, Y]$, and $f = u(v(H_1/H_2))$, where $v \in \mathbb{C}(T)$ is an homography.

The following proposition explains why indecomposable functions are important in our situation.

Proposition 11. *If we denote by $\ker D$ the set of rational first integrals of D we have $\ker D = \mathbb{C}(f/g)$ where $f/g \in \mathbb{C}(X, Y)$ is indecomposable, or $\ker D = \mathbb{C}$.*

A consequence of this proposition is that any two indecomposable rational first integrals are equal, up to an homography.

In the situation of a polynomial first integral, we can find a proof of this proposition in [19, Corollary 18]. However we have not found a reference for this result in the situation of a rational first integral. Thus we give a proof based on the following lemma, see [35, Lemma A.1]. This lemma means that at a nonsingular point of a vector field there is at most one algebraic solution. Another proof of Proposition 11 using Lüroth's theorem is possible.

Lemma 12. *Let $D = A(X, Y)\partial_X + B(X, Y)\partial_Y$ be a derivation and let f_1, f_2 be two invariant algebraic curves. Suppose that (x_0, y_0) is a nonsingular point of D , i.e. $A(x_0, y_0) \neq 0$ or $B(x_0, y_0) \neq 0$. If $f_1(x_0, y_0) = f_2(x_0, y_0) = 0$ and f_1 is irreducible then f_1 divides f_2 .*

Proof of Proposition 11. If $\ker D \neq \mathbb{C}$ then there exists $f/g \in \mathbb{C}(X, Y) \setminus \mathbb{C}$ such that $D(f/g) = 0$. We can suppose that f/g is indecomposable. Indeed, if $f/g = u(h)$, with $\deg(u) \geq 2$ and h indecomposable, then we have $0 = D(f/g) = u'(h)D(h)$. As $\deg(u) \geq 2$ we deduce $u'(h) \neq 0$ and $D(h) = 0$. Thus h is indecomposable and $h \in \ker D$.

Now, as f/g is indecomposable, we can suppose, thanks to Remark 10 and the previous computation, that f and g are irreducible in $\mathbb{C}[X, Y]$ with $\deg(f) = \deg(g)$. Then, we can assume that f/g is a rational function with minimal degree in the set of all indecomposable rational functions $F/G \in \ker D$ such that F and G are irreducible in $\mathbb{C}[X, Y]$ with $\deg(F) = \deg(G)$.

Now, let $F_1/F_2 \in \ker D$, and set $F_1/F_2 = U(H_1/H_2)$ where H_1/H_2 is indecomposable. As before, we can show that $D(H_1/H_2) = 0$ and suppose, thanks to Remark 10, that H_1 and H_2 are irreducible in $\mathbb{C}[X, Y]$, and $\deg(H_1) = \deg(H_2)$. Now we claim:

$$(\star) \text{ there exist } \alpha_i, \beta_i \in \mathbb{C} \text{ such that } H_i = \alpha_i f - \beta_i g.$$

We prove the claim: As the number of singular points of D is finite we can consider $(x_i, y_i) \in \mathbb{C}^2$, where $i = 1, 2$, are nonsingular points of D such that $H_i(x_i, y_i) = 0$. Then we apply Lemma 12, to H_i and $g(x_i, y_i)f(X, Y) - f(x_i, y_i)g(X, Y)$ and we deduce that H_i divides $g(x_i, y_i)f(X, Y) - f(x_i, y_i)g(X, Y)$. As we have supposed the degree of f/g minimal, this proves the claim.

Now, thanks to our claim, we get $H_1/H_2 = V(f/g)$ where $V \in \mathbb{C}(T)$ is an homography. Thus $F_1/F_2 = U(V(f/g))$. It follows $\ker D = \mathbb{C}(f/g)$. \square

It follows that indecomposable first integrals correspond to first integrals with minimal degree.

3. PROOF OF THEOREM 2

As mentioned before, the strategy will be the following: first construct a rational first integral with factors some of the $f_{(\lambda,\mu),i}$ and then get a contradiction.

Proof of Theorem 2. Suppose that $\rho(f, g) \geq \mathcal{B} + 2$, we are going to prove that this situation is absurd.

We denote by s the number of remarkable values in $\sigma(f, g) \setminus \gamma(f, g)$. Furthermore, we use the following convention: if Z divides $f_{(\lambda_i:\mu_i)}^h$ then we set $f_{(\lambda_i:\mu_i),n(\lambda_i:\mu_i)}^h = Z$. Then, $f_{(\lambda_1,\mu_1),1}, \dots, f_{(\lambda_1,\mu_1),n(\lambda_1:\mu_1)-1}, \dots, f_{(\lambda_s,\mu_s),1}, \dots, f_{(\lambda_s,\mu_s),n(\lambda_s:\mu_s)-1}$ are non-trivial invariant algebraic curves by Proposition 6.

As $\sum_{i=1}^s (n(\lambda_i:\mu_i) - 1) = \rho(f, g) \geq \mathcal{B} + 2$, Jouanolou's theorem in the sparse case, see Theorem 8, implies that these curves give a rational first integral. That is to say, there exist integers $c_{(\lambda_1:\mu_1),1}, \dots, c_{(\lambda_s:\mu_s),n(\lambda_s:\mu_s)-1}$ such that

$$\prod_{j=1}^s \prod_{i=1}^{n(\lambda_j:\mu_j)-1} f_{(\lambda_j:\mu_j),i}^{c_{(\lambda_j:\mu_j),i}} \in \ker D.$$

By Proposition 11, we get

$$\prod_{j=1}^s \prod_{i=1}^{n(\lambda_j:\mu_j)-1} f_{(\lambda_j:\mu_j),i}^{c_{(\lambda_j:\mu_j),i}} = u \left(\frac{f}{g} \right),$$

where $u \in \mathbb{C}(T)$. Furthermore, $u(f/g)$ is a rational function of this form:

$$u \left(\frac{f}{g} \right) = \frac{\prod_l (\alpha_l f - \beta_l g)}{\prod_m (\gamma_m f - \delta_m g)} \cdot g^e,$$

where $\alpha_l, \beta_l, \gamma_m, \delta_m \in \mathbb{C}$ and $e \in \mathbb{Z}$. Thus we get the equality

$$(*) \quad \prod_{j=1}^s \prod_{i=1}^{n(\lambda_j:\mu_j)-1} f_{(\lambda_j:\mu_j),i}^{c_{(\lambda_j:\mu_j),i}} = \frac{\prod_l (\alpha_l f - \beta_l g)}{\prod_m (\gamma_m f - \delta_m g)} \cdot g^e.$$

As the factorization into irreducible factors in $\mathbb{C}[X, Y]$ is unique, we deduce that $(\alpha_l : \beta_l)$ and $(\gamma_m : \delta_m)$ belong to the spectrum $\sigma(f, g)$. Without loss of generality we can suppose that $(\lambda_1, \mu_1) = (\alpha_1, \beta_1)$. Then we deduce that equality (*) is impossible since the factor $f_{(\lambda_1:\mu_1),n(\lambda_1:\mu_1)}$ does not appear in the left hand side of the equality but must appear in the right hand side. This concludes the proof. \square

ACKNOWLEDGMENT

The author thanks Thomas Cluzeau, Jacques-Arthur Weil and Antoni Ferragut for their precious comments during the preparation of this text. Furthermore, the author has greatly appreciate the comments of the anonymous referee. These comments have allow to improve the submitted paper.

REFERENCES

- [1] Shreeram S. Abhyankar, William J. Heinzer, and Avinash Sathaye. Translates of polynomials. In *A tribute to C. S. Seshadri (Chennai, 2002)*, Trends Math., pages 51–124. Birkhäuser, Basel, 2003.
- [2] María Jesús Álvarez and Antoni Ferragut. Local behavior of planar analytic vector fields via integrability. *J. Math. Anal. Appl.*, 385(1):264–277, 2012.
- [3] Arnaud Bodin. Reducibility of rational functions in several variables. *Israel J. Math.*, 164:333–347, 2008.

- [4] Arnaud Bodin, Pierre Dèbes, and Salah Najib. Indecomposable polynomials and their spectrum. *Acta Arith.*, 139(1):79–100, 2009.
- [5] Arnaud Bodin, Pierre Dèbes, and Salah Najib. Irreducibility of hypersurfaces. *Comm. Algebra*, 37(6):1884–1900, 2009.
- [6] A. Bostan, G. Chèze, T. Cluzeau, and J.-A. Weil. Efficient algorithms for computing rational first integrals and Darboux polynomials of polynomial vector fields. to appear in *Mathematics of Computation*, 2015.
- [7] L. Busé and G. Chèze. On the total order of reducibility of a pencil of algebraic plane curves. *Journal of Algebra*, 341(1):256–278, 2011.
- [8] Laurent Busé, Guillaume Chèze, and Salah Najib. Noether forms for the study of non-composite rational functions and their spectrum. *Acta Arith.*, 147(3):217–231, 2011.
- [9] D. Cerveau and J.-F. Mattei. *Formes intégrables holomorphes singulières*, volume 97 of *Astérisque*. Société Mathématique de France, Paris, 1982. With an English summary.
- [10] Javier Chavarriga, Hector Giacomini, Jaume Giné, and Jaume Llibre. Darboux integrability and the inverse integrating factor. *J. Differential Equations*, 194(1):116–139, 2003.
- [11] Guillaume Chèze. Nearly optimal algorithms for the decomposition of multivariate rational functions and the extended Lüroth theorem. *J. Complexity*, 26(4):344–363, 2010.
- [12] Guillaume Chèze. Darboux theory of integrability in the sparse case. Preprint, arXiv:1210.7780, Under revision, *J. Differential Equations*, 2012.
- [13] Colin Christopher, Jaume Llibre, and Jorge Vitório Pereira. Multiplicity of invariant algebraic curves in polynomial vector fields. *Pacific J. Math.*, 229(1):63–117, 2007.
- [14] Bartomeu Coll, Antoni Ferragut, and Jaume Llibre. Polynomial inverse integrating factors for quadratic differential systems. *Nonlinear Anal.*, 73(4):881–914, 2010.
- [15] Gaston Darboux. Mémoire sur les équations différentielles du premier ordre et du premier degré. *Bull. Sci. Math.*, 32:60–96, 123–144, 151–200, 1878.
- [16] Freddy Dumortier, Jaume Llibre, and Joan C. Artés. *Qualitative theory of planar differential systems*. Universitext. Springer-Verlag, Berlin, 2006.
- [17] Antoni Ferragut. Some new results on Darboux integrable differential systems. *J. Math. Anal. Appl.*, 394(1):416–424, 2012.
- [18] Antoni Ferragut and Armengol Gasull. Seeking Darboux Polynomials. to appear in *Acta Applicandae Mathematicae*.
- [19] Antoni Ferragut and Jaume Llibre. On the remarkable values of the rational first integrals of polynomial vector fields. *J. Differential Equations*, 241(2):399–417, 2007.
- [20] Antoni Ferragut, Jaume Llibre, and Adam Mahdi. Polynomial inverse integrating factors for polynomial vector fields. *Discrete Contin. Dyn. Syst.*, 17(2):387–395, 2007.
- [21] Belén García, Héctor Giacomini, and Jesús S. Pérez del Río. Planar polynomial vector fields having a polynomial first integral can be obtained from linear systems. *Appl. Math. Lett.*, 24(7):1115–1119, 2011.
- [22] Belén García, Jaume Llibre, and Jesús S. Pérez del Río. On the polynomial differential systems having polynomial first integrals. *Bull. Sci. Math.*, 136(3):309–316, 2012.
- [23] Alain Goriely. *Integrability and nonintegrability of dynamical systems*, volume 19 of *Advanced Series in Nonlinear Dynamics*. World Scientific Publishing Co. Inc., River Edge, NJ, 2001.
- [24] J. P. Jouanolou. *Équations de Pfaff algébriques*, volume 708 of *Lecture Notes in Mathematics*. Springer, Berlin, 1979.
- [25] Shulim Kaliman. Two remarks on polynomials in two variables. *Pacific J. Math.*, 154(2):285–295, 1992.
- [26] Steven L. Kleiman. Bertini and his two fundamental theorems. *Rend. Circ. Mat. Palermo (2) Suppl.*, 55:9–37, 1998. Studies in the history of modern mathematics, III.
- [27] Jaume Llibre and Xiang Zhang. Darboux theory of integrability for polynomial vector fields in \mathbb{R}^n taking into account the multiplicity at infinity. *Bull. Sci. Math.*, 133(7):765–778, 2009.
- [28] Jaume Llibre and Xiang Zhang. Darboux theory of integrability in \mathbb{C}^n taking into account the multiplicity. *J. Differential Equations*, 246(2):541–551, 2009.
- [29] Dino Lorenzini. Reducibility of polynomials in two variables. *J. Algebra*, 156(1):65–75, 1993.
- [30] Jean Moulin Ollagnier. Algebraic closure of a rational function. *Qual. Theory Dyn. Syst.*, 5(2):285–300, 2004.
- [31] Salah Najib. Sur le spectre d’un polynôme à plusieurs variables. *Acta Arith.*, 114(2):169–181, 2004.

- [32] Salah Najib. Une généralisation de l'inégalité de Stein-Lorenzini. *J. Algebra*, 292(2):566–573, 2005.
- [33] Henri Poincaré. Sur l'intégration algébrique des équations différentielles du premier ordre et du premier degré. *Rend. Circ. Mat. Palermo*, 5:161–191, 1891.
- [34] Wolfgang Ruppert. Reduzibilität Ebener Kurven. *J. Reine Angew. Math.*, 369:167–191, 1986.
- [35] Michael F. Singer. Liouvillian first integrals of differential equations. *Trans. Amer. Math. Soc.*, 333(2):673–688, 1992.
- [36] Yosef Stein. The total reducibility order of a polynomial in two variables. *Israel J. Math.*, 68(1):109–122, 1989.
- [37] Angelo Vistoli. The number of reducible hypersurfaces in a pencil. *Invent. Math.*, 112(2):247–262, 1993.

INSTITUT DE MATHÉMATIQUES DE TOULOUSE, UNIVERSITÉ PAUL SABATIER TOULOUSE 3, MIP
BÂT 1R3, 31 062 TOULOUSE CEDEX 9, FRANCE
E-mail address: `guillaume.cheze@math.univ-toulouse.fr`