



Laboratory of Excellence Physic Radiobiology Medical Imaging and Simulation - PRIMES

Béatrice Rayet, Denis Dauvergne, Françoise Peyrin

► To cite this version:

Béatrice Rayet, Denis Dauvergne, Françoise Peyrin. Laboratory of Excellence Physic Radiobiology Medical Imaging and Simulation - PRIMES. 8èmes journées scientifiques du CLARA, Mar 2013, Lyon, France. hal-00855004

HAL Id: hal-00855004

<https://hal.science/hal-00855004>

Submitted on 28 Aug 2013

HAL is a multi-disciplinary open access archive for the deposit and dissemination of scientific research documents, whether they are published or not. The documents may come from teaching and research institutions in France or abroad, or from public or private research centers.

L'archive ouverte pluridisciplinaire **HAL**, est destinée au dépôt et à la diffusion de documents scientifiques de niveau recherche, publiés ou non, émanant des établissements d'enseignement et de recherche français ou étrangers, des laboratoires publics ou privés.

Laboratory of Excellence Physic Radiobiology Medical Imaging and Simulation - PRIMES

Béatrice RAYET^{1*}, Denis DAUVERGNE² and Françoise PEYRIN³, on the behalf of the LabEx PRIMES members

¹ Chef de Projet LabEx PRIMES – *Contact: b.rayet@ipnl.in2p3.fr - + 33 (0)4 72 43 11 40 – <http://primes.universite-lyon.fr>

² CAS-PHABIO – Institut de Physique Nucléaire de Lyon, CNRS IN2P3, Villeurbanne

³ CREATIS Inserm U1044, CNRS UMR 5220, Villeurbanne et ESRF, Grenoble

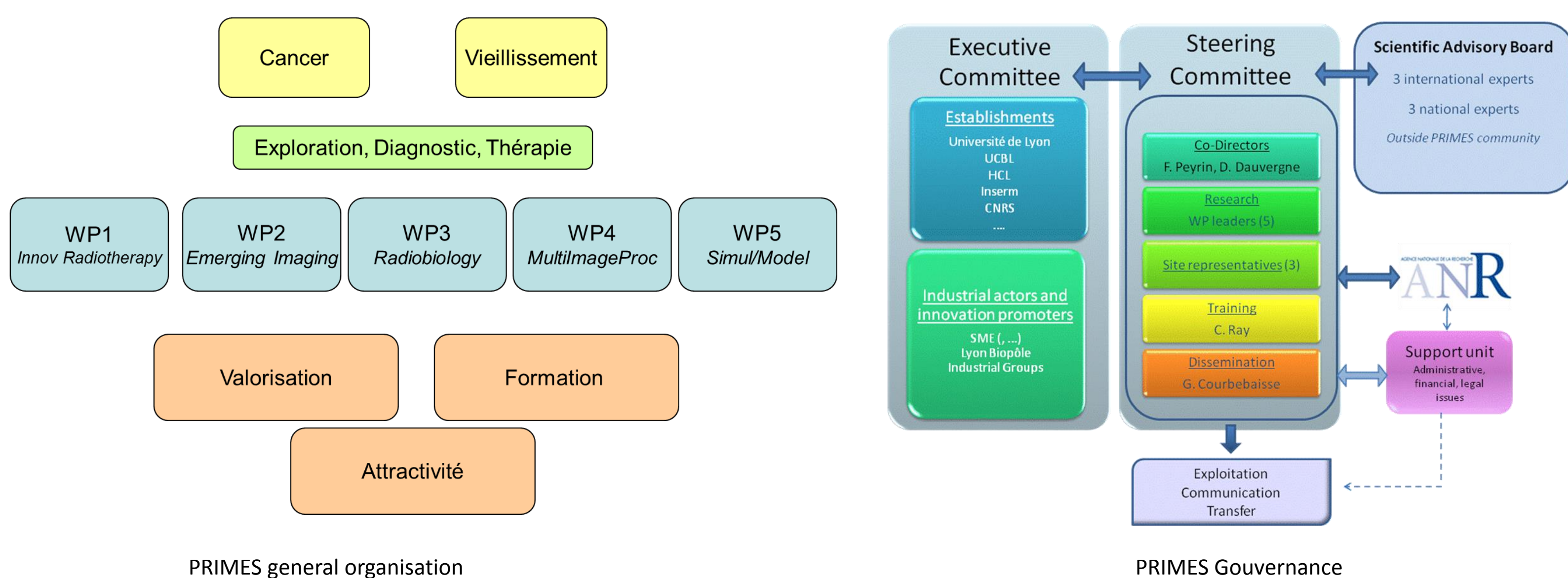
Acknowledgment: PRIMES is a LabEx 2 contract (Investissements d'Avenir - ANR)

BACKGROUND

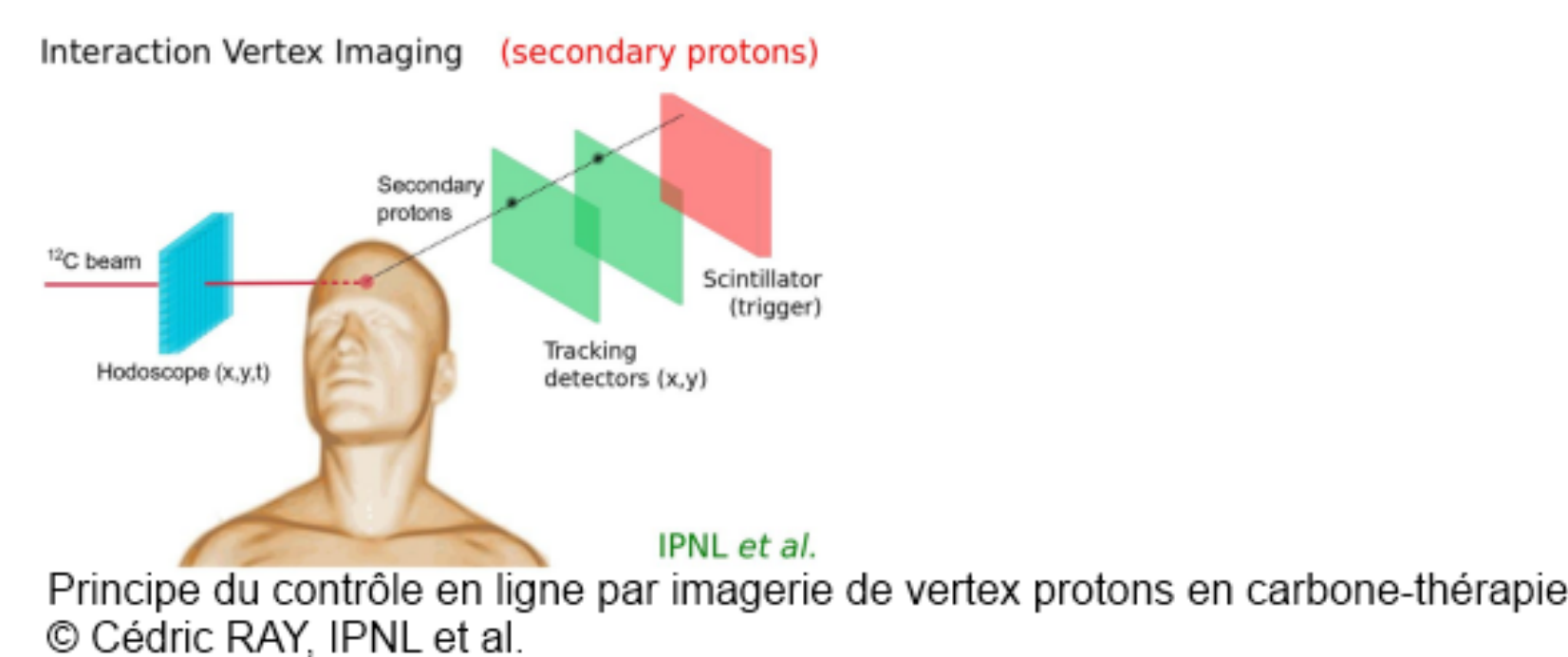
At the National level, the questions of **cancer** and **ageing** are given highest priority in the domain of health research, providing strong societal impact for the quality of life and for the economy.

The fundamental questions that are addressed in this project are how to provide new imaging tools for exploring living tissues at different scales with new contrasts and how to build optimized, controlled and safe strategies for irradiation-based cancer therapy.

This field of research is by nature interdisciplinary and the LabEx members have expertise in **physics, radiobiology, acquisition, images reconstruction and treatment, simulation and modeling**.



RESEARCH: RADIOTHERAPY (WP1; 3; 5)

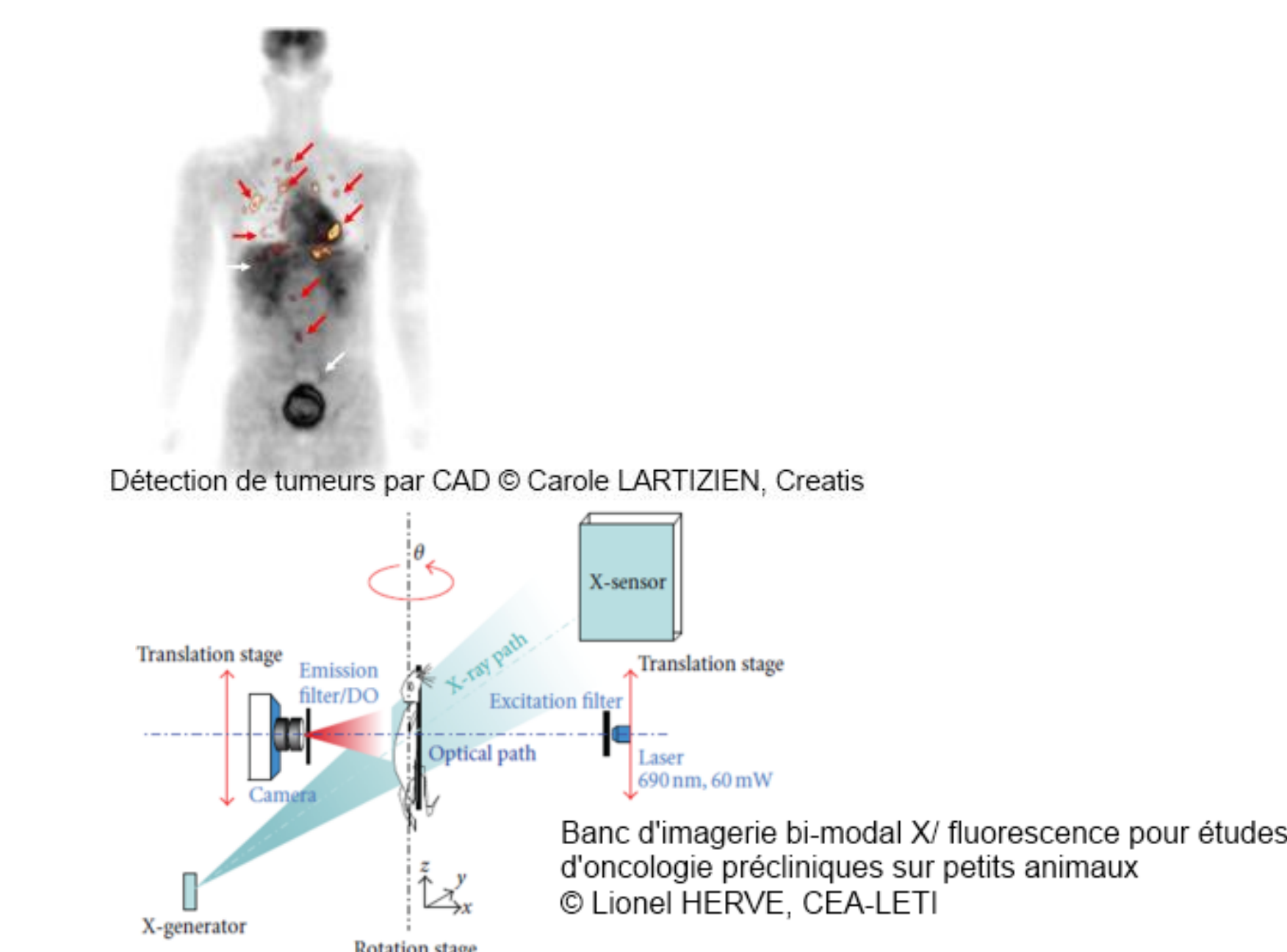


WP1: Development of Innovative Methods and Instruments in Radiotherapy: innovative radiotherapies, will include **hadrontherapy** and hard X-rays at ESRF. A key issue will be **on-line dose monitoring**.

WP3: Radiobiology: including development of instruments, methods, models and simulations for the acquisition, the analysis and prediction of radiobiological data, and the improvement of **innovative radiotherapy treatments** based on high energy carbon ions, PAT-Z and MRT.

WP5: Image-based models and simulations will develop tools for modeling of a virtual patient and treatment room environment.

RESEARCH: MEDICAL IMAGING AND SIMULATION (WP2; 4; 5)



WP2: Emerging Imaging Techniques will cover new instruments for improved diagnosis **with new hybrid imaging techniques**, with **combinations of PET, MR, US, Optical Imaging** as well as **challenging techniques** such as cardiac DTI, novel X-ray based methods (Spectral CT, Phase-Contrast Imaging), or Fluorescent Diffuse Optical tomography.

WP4: Multidimensional Image Processing spanning new developments **in inverse problems** for emerging imaging modalities and **extraction of image biomarkers** involving denoising, segmentation, motion estimation, image registration and quantification.

WP5: Image-based models and simulations will develop tools for virtual multimodality imaging and modeling of a virtual patient.

VALORIZATION AND SOCIO-ECONOMIC IMPACTS

Cancers represent a multitude of diseases and is one of the most important cause of death and morbidity in Europe. Age related diseases including cardiovascular diseases, stroke, brain degenerative diseases, osteoarticular diseases are the first cause of acquired disability.

At the National level, the questions of cancer and ageing are given highest priority in the domain of health research, providing strong societal impact for the quality of life and for the economy.

The new achievements anticipated from the LabEx are expected to improve the early diagnosis of targeted diseases, improve the treatment of cancers and thus participate to a better quality of life. Early screening and stratification of risk through imaging may improve our knowledge and may have a significant socioeconomic impact.

Our socio-economic partners are: Fondation Neurodis; Cancerpole CLARA; Lyon –Biopôle (IRT); AQUILAB, CIRMA, VOXCAN, Bioclinica, Kitware, Eriksolution, Digsens, Guerbet, Bruker, IBA, Dosisoft....

CONCLUSION

The expectations from this LabEx initiative are to strengthen the local and regional synergies also with medical actors; to create a pole in medical imaging and physic applied to health; to increase the visibility on these thematic (publications, diffusion, animation); to strengthen international collaborations; to gain recognition in initial and continuous training, to develop valorization through industrial partnership, ...

TRAINING



Students will be encouraged to choose several credits from a LabEx-labeled set of classes. This hub will cover four main topics: **Instrumentation and data acquisition**, **Signal, data and image processing**, **Radiotherapy and particles interactions**, and **Simulations**.

The LabEx will create a new practical and classes platform combining in a unique place: A material platform (MRI, ultrasounds and X scanner) and a simulation platform (GEANT 4, GATE and Images reconstructions).

