



Inertia-gravity waves generated by near balanced flow in 2 layers shallow water turbulence on the beta plane

Achim Wirth

► To cite this version:

Achim Wirth. Inertia-gravity waves generated by near balanced flow in 2 layers shallow water turbulence on the beta plane. Symposium OGOA, May 2013, Lyon, France. hal-00840924

HAL Id: hal-00840924

<https://hal.science/hal-00840924>

Submitted on 3 Jul 2013

HAL is a multi-disciplinary open access archive for the deposit and dissemination of scientific research documents, whether they are published or not. The documents may come from teaching and research institutions in France or abroad, or from public or private research centers.

L'archive ouverte pluridisciplinaire **HAL**, est destinée au dépôt et à la diffusion de documents scientifiques de niveau recherche, publiés ou non, émanant des établissements d'enseignement et de recherche français ou étrangers, des laboratoires publics ou privés.

Achim Wirth (LEGI)

Inertia-Gravity Waves generated by near Balanced Flow in 2 Layer Shallow Water Turbulence on the beta Plane

Achim Wirth (LEGI)

Using a fine resolution numerical model (2×4000^2 grid-points) of the two layer shallow-water equations of the mid-latitude beta plane dynamics, it is shown that there is no sudden breakdown of balance in the turbulent enstrophy-cascade but a faint and continuous emission of inertia gravity waves. The wave energy accumulates in the equator-ward region of the domain due to the Coriolis parameter depending on latitude and the dispersion relation of inertia gravity waves.

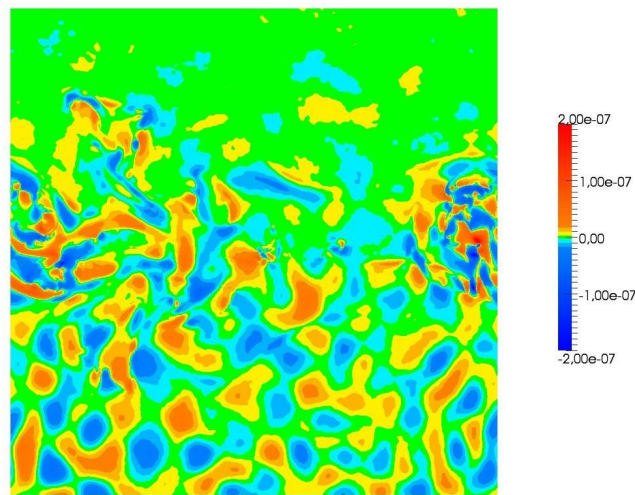


Figure 1: Divergence of the upper layer (in s^{-1}) after 250 days. The accumulation of wave-activity is clearly visible in the southern part of the domain. As is the dominance of structures of scale above the (baroclinic) deformation radius.

1. Wirth, A., Inertia-Gravity Waves generated by near Balanced Flow in 2 Layer Shallow Water Turbulence on the beta-plane, *Nonlin. Processes Geophys.*, 20, 25-34, 2013.