



HAL
open science

Imaging interferometry to measure surface rotation field

Thomas Travailot, Soren Dohn, Anja Boisen, Fabien Amiot

► **To cite this version:**

Thomas Travailot, Soren Dohn, Anja Boisen, Fabien Amiot. Imaging interferometry to measure surface rotation field. *Applied optics*, 2013, 52 (18), pp.4360-4369. 10.1364/AO.52.004360. hal-00835909

HAL Id: hal-00835909

<https://hal.science/hal-00835909>

Submitted on 21 Jun 2013

HAL is a multi-disciplinary open access archive for the deposit and dissemination of scientific research documents, whether they are published or not. The documents may come from teaching and research institutions in France or abroad, or from public or private research centers.

L'archive ouverte pluridisciplinaire **HAL**, est destinée au dépôt et à la diffusion de documents scientifiques de niveau recherche, publiés ou non, émanant des établissements d'enseignement et de recherche français ou étrangers, des laboratoires publics ou privés.

Imaging interferometry to measure surface rotation field

Thomas Travaillot

*FEMTO-ST Institute, CNRS-UMR 6174/UFC/ENSMM/UTBM, 24 chemin de l'Épitaphe,
F-25030 Besançon, France*

thomas.travaillot@femto-st.fr

Søren Dohn

*Nanotech, Technical University of Denmark, Building 345 East, DK-2800 Kongens Lyngby,
Denmark*

Anja Boisen

*Nanotech, Technical University of Denmark, Building 345 East, DK-2800 Kongens Lyngby,
Denmark*

Fabien Amiot

*FEMTO-ST Institute, CNRS-UMR 6174/UFC/ENSMM/UTBM, 24 chemin de l'Épitaphe,
F-25030 Besançon, France*

This paper describes a polarized light imaging interferometer to measure the rotation field of reflecting surfaces. This set-up is based on a home-made prism featuring a birefringence gradient. The arrangement is presented before focusing on the home-made prism and its manufacturing process. The dependence of the measured optical phase on the rotation of the surface is derived, thus highlighting the key parameters driving the sensitivity. The system's capabilities are illustrated by imaging the rotation field at the surface of a tip-loaded polymer specimen. © 2013 Optical Society of America

OCIS codes: 110.3175, 160.2710, 180.3170.

1. Introduction

With the miniaturization of devices, MEMS development, or more generally with constant advances in thin coating technology, the knowledge of mechanical properties of the involved materials becomes an important topic in engineering science. Elastic properties of the thin films are known to be very dependent on the processing conditions. Their knowledge is thus essential to guarantee the capabilities of systems using these materials, and it is crucial to be able to access the mechanical properties of thin film materials as deposited, that is without any additional processing. Several methods are available to measure the elastic properties of an isotropic thin film material (described by its Young modulus E and Poisson ratio ν). But many of them such as nanoindentation [1], atomic force acoustic microscopy (AFAM, [2]) or single mode scanning microdeformation microscope (SMM, [3]- [7]) only provide a combination of the properties ($E/(1-\nu^2)$ for the nanoindentation). Basically, this latter microscope uses a cantilever, with a micro-tip (radius $\sim 10 \mu\text{m}$) at its end, which vibrates in permanent contact with the sample to characterize. Pressing the tip onto the sample shifts the first resonance frequency according to a combination of $[E/(1-\nu^2)]^{\frac{2}{3}}$ and $[E/(1-\nu^2)]^{\frac{2}{3}} \times (1-\nu)/(2-\nu)$. One thus has to impose the value of ν to retrieve $(E/(1-\nu^2))^{\frac{2}{3}}$. Obtaining a full parameters set for isotropic materials and moving towards anisotropic materials is thus challenging.

It is possible to decouple the elasticity constants by combining techniques [8]- [10] or by using the 2-first modes SMM [11]. In this last case, the parameter driving the Poisson ratio sensitivity is however very dependent on a geometrical parameter which is rather difficult to access experimentally from resonance frequencies. An additional experimental information is thus required in order to make the decoupling procedure robust. This could be a tip-independent kinematic information such as the out-of-plane displacement field in the neighborhood of the tip. Many imaging interferometric systems are virtually usable to access a displacement field, such as compensated interferometers described by Françon or Nomarski employing a Savart polariscope or a Wollaston prism, respectively [12]. It is worth noting that the latter features a usually overlooked tilt sensitivity [13]. It should however be noticed that the out-of-plane displacement amplitude under the tip is usually a few nanometers or less, so that it may turn difficult to access a reliable displacement field. The elastically affected zone being rather small, it would seem wise to measure the rotation field instead of the out-of-plane displacement field. This can be justified considering the problem of Boussinesq [14] : applying a point loading on an elastic half-space, the surface displacement field $w(r)$ varies as $1/r$ (with r : the in-plane distance between the loading point and the point of interest) and is therefore very confined. The surface rotation $\theta(r)$ thus scales as $w(r)/r$ and may reach experimentally accessible values since r is very small. The same applies to vanishingly small structures such as microcantilevers : considering a clamped-free beam (length L) with a constant curvature [15], the maximum out-of-plane displacement scales as L^2 while the rotation

scales as L . As a consequence, if L decreases, the out-of-plane displacement decreases faster than the rotation. In the case of micro or even nano-system, it thus becomes interesting to measure a rotation rather than a displacement.

Many interferometric [16]- [19] or non interferometric [20]- [21] angular measurement systems have been devised in the past to allow for a pointwise measure. Imaging techniques to obtain surface rotation images as deflectometry [22] or shearography [23] are available at the macro-scale.

This paper describes a polarized-light imaging interferometer derived from the one already proposed to measure out-of-plane displacement fields [13]. The originality of the set-up is to be based on a home-made prism featuring a birefringence gradient which allows to measure full rotation (instead of displacement) fields. The device and the interference pattern are described. The manufacturing process for the prism is then detailed. The dependence of the measured optical phase on the rotation of the surface is exhibited and the key parameters driving its rotation sensitivity are highlighted. An example for the practical calibration of the set-up is given. Finally, an example with a micro-tip pressing onto a polymer (PDMS) sample demonstrates the ability of the proposed set-up, combined with a phase-stepping method, to catch localized phenomena. Detailed calculations describing the effect of the numerical aperture are presented in the appendix.

2. Rotation field measurement

2.A. Experimental set-up

A schematic view of the interferential microscopy imaging set-up is shown in Fig. 1. The device is based on a home-made prism, containing an uniaxial birefringence gradient. The light source is a spatially incoherent light-emitting diode (LED, $\lambda = 627$ nm), which is used to illuminate a polarizing beam splitter. After the polarizing beam splitter, the incident beam on the prism is linearly polarized at 45° of the gradient direction (\mathbf{y}) of the birefringent prism. The prism splits the beam into two orthogonally polarized beams with a small angle between each other. One of these beams is polarized orthogonally to the plane Π defined by the optical axis of the system and the gradient direction of the prism (\mathbf{y}), and will be referred to as transverse electric (TE) beam. The other is polarized in the plane Π , and will be referred to as transverse magnetic (TM) beam. These beams are focused upon the sample by an objective lens. After reflection on the sample and recombination by the birefringent prism, the beam goes through the polarization beam splitter, which thus behaves as a polarizer orthogonal to the entrance one. The transmitted beam is finally focused on a CCD array (DALSA 1M30, 1024×1024 pixels, 12 bits) which records the interference pattern. As the set-up is illuminated using a light-emitting diode, the interference pattern reads [13]

$$I = I_0 + A \cos(\phi + \pi) \quad (1)$$

with ϕ the phase shift between the TM and TE polarization components.

2.B. Home-made birefringent prism

2.B.1. Manufacturing process

The key element in the imaging set-up is the birefringent prism. The (O_1xy) plane corresponds to the entrance surface of the prism. A heterogeneous stress state is frozen in the material to induce a heterogeneous birefringence state. To set a uniaxial stress gradient of the σ_{xx} component along \mathbf{y} , it is necessary to induce in the prism an homogeneous bending moment.

In practice, the prism is made out of PS-8A epoxy resin (Vishay Micro-Measurements). A test sample is machined from the polymer plate and then heated up above its glass transition temperature ($T_g \simeq 85$ °C). It then undergoes an off-axis tensile test, described in Fig. 2. The test sample is finally cooled at room temperature when maintaining the applied force to freeze the birefringence state in the prism. By tailoring the specimen geometry and loading, it is possible to obtain a wide range of values for the birefringence gradient. Using beam theory, the stress tensor $\underline{\underline{\sigma}}$ in the prism reads

$$\underline{\underline{\sigma}} = \begin{pmatrix} Gy & 0 & 0 \\ 0 & 0 & 0 \\ 0 & 0 & 0 \end{pmatrix}_{(x,y,z)} \quad (2)$$

where G denotes the gradient value.

2.B.2. Refractive index field

For the description of the prism, let us define the Π_0 plane such as $\sigma_{xx}(y) = 0$. Let us describe the prism in the plane (O_1yz) where O_1 is the intersection between the y axis and the plane Π_0 . (O_1xz) and (O_1yz) are assumed to be made coincident with the plane Π_0 and Π , respectively.

The frozen uniaxial stress gradient results in a refractive index gradient in the prism. Initially, the unstressed material has a refractive index $n^* = 1.5$ for both TE and TM rays. As a consequence of the arrangement described in Fig. 2, TM rays are polarized in the plane Π . As σ_{yy} is equal to 0 everywhere, the TM index is equal to n^* for any entrance point ($n_{TM} = n^*$). TE rays are polarized in the x -direction so they experience refractive indexes modified by σ_{xx} . As σ_{xx} linearly depends on y , the TE index varies linearly with y . The TE refractive index thus reads

$$n_{TE} = n^* + C_b G y = n^* + c_{TE} y \quad (3)$$

where C_b is the photoelastic constant of material. Using a 3 mm thick polymer plate, a birefringence gradient $c_{TE} \sim 0.1 \text{ m}^{-1}$ is achieved with the chosen material.

2.B.3. Ray-tracing

Fig. 3 shows (in the Π plane) the decomposition of an incident ray by the prism into two emerging rays. Assuming that the surrounding refractive index equals to 1, the Snell-Descartes laws on the entrance interface of the prism read

$$\sin \theta_e = n_{TM} \sin \theta_{a_{TM}} = n_{TE}(y_e) \sin \theta_{a_{TE}} \quad (4)$$

where θ_e is the incidence angle, y_e is the entrance point and $\theta_{a_{TE}}$ and $\theta_{a_{TM}}$ are the angles of the refracted rays at the entrance interface. The Snell-Descartes laws for the exit interface of the prism read

$$n_{TM} \sin \theta_{b_{TM}} = \sin \theta_{o_{TM}} = \sin \theta_e \quad (5)$$

$$n_{TE}(y_{o_{TE}}) \sin \theta_{b_{TE}} = \sin \theta_{o_{TE}} \quad (6)$$

where $y_{o_{TE}}$ is the exit point for the TE ray. $\theta_{b_{TE}}$ and $\theta_{b_{TM}}$ are the incidence angles at the exit interface for TE and TM rays respectively. $\theta_{o_{TE}}$ and $\theta_{o_{TM}}$ are the emerging angles for TE and TM rays respectively. The relation between entrance and exit angles of the prism for the TE ray is given by the eikonal equation and reads

$$\theta_{b_{TE}} = \theta_{a_{TE}} + \epsilon + o(\theta_{a_{TE}}^3, \epsilon^3) \quad (7)$$

with :

$$\epsilon = \frac{c_{TE} e}{n_{TE}(y_e)} \simeq 3 \times 10^{-4} \text{ rad} \quad (8)$$

It depends on the thickness of the prism ($e = 3 \text{ mm}$), birefringence gradient and TE rays refractive index at the entrance point. ϵ represents the deflection of the TE ray inside the prism by the birefringence gradient. For the TM ray, the exit point $y_{o_{TM}}$ reads

$$y_{o_{TM}} = y_e + e \tan \theta_{a_{TM}} \quad (9)$$

The relation between entrance and exit points of the prism for the TE ray is also given by the eikonal equation and reads

$$y_{o_{TE}} = y_e + e \left(\theta_{a_{TE}} + \frac{\epsilon}{2} \right) + o(\theta_{a_{TE}}^3, \epsilon^3) \quad (10)$$

The separation between TE and TM rays reads

$$\theta_{o_{TE}} - \theta_{o_{TM}} = c_{TE}e + o(\theta_e^3, \epsilon^3) \sim 10^{-4} \text{ rad} \quad (11)$$

It only depends on the thickness of the prism and the birefringence gradient. Further developments will be made easier by defining the plane of apparent splitting (PAS, see dash line on Fig. 3). For an incident ray, it gathers the points where TE and TM rays appear to split. The equation of the PAS reads

$$z = \tan(\theta_{PAS})y - e \left[1 - \frac{1}{2n^*} \right] + o(\theta_e^2, \epsilon^2, (c_{TE}y_e)^2) \quad (12)$$

with :

$$\theta_{PAS} = \frac{ec_{TE} + 2\theta_e}{2n^{*2}} + o(\theta_e^2, \epsilon^2, (c_{TE}y_e)^2) \quad (13)$$

θ_{PAS} is the angle between PAS and surface of the prism (see Fig. 3). Expansion of Taylor with respect to $c_{TE}y_e$ is possible because $c_{TE}y_e \ll n^*$ in the expression of ϵ (see Eq. (8)).

2.B.4. Optical path length in the prism

For the TM ray, the refractive index is constant, so the trajectory is rectilinear and the optical length L_{TM} reads

$$L_{TM} = n^* \frac{e}{\cos \theta_{a_{TM}}} = \frac{n^{*2} e}{\sqrt{n^{*2} - \sin^2 \theta_e}} \quad (14)$$

The optical path length for TM ray thus depends on the incidence angle (see Fig. 3) but does not depend on the entrance point. For the TE ray, the optical path length reads

$$L_{TE} = \int_{-e}^0 \frac{n_{TE}(y_{TE}(z))}{\cos(\theta_{TE}(z))} dz \quad (15)$$

with :

$$y_{TE}(z) = y_e - z \left(\frac{\theta_e}{n_{TE}(y_e)} - \frac{\epsilon z}{2e} \right) + o(\theta_e^3, \epsilon^3) \quad (16)$$

$$\theta_{TE}(z) = \frac{\theta_e}{n_{TE}(y_e)} - \frac{\epsilon z}{e} + o(\theta_e^3, \epsilon^3) \quad (17)$$

The optical path length for the TE ray finally reads

$$L_{TE} = e \left[n_{TE}(y_e) \left(1 + \frac{\epsilon^2}{6} \right) + \frac{c_{TE}e}{6} \epsilon + \epsilon \theta_e + \frac{\theta_e^2}{2n_{TE}(y_e)} \right] + o(\theta_e^3, \epsilon^3) \quad (18)$$

L_{TE} depends on both the incidence angle θ_e and the entrance point y_e .

2.C. Optical phase

Let us assume that the optical phase difference ϕ due to the path prism-objective-sample-objective-prism can be decomposed as $\phi = \phi_p + \phi_o$ where ϕ_p denotes the part arising from the birefringent prism and ϕ_o the contribution arising from the object.

2.C.1. Optical phase arising from the birefringent prism

Fig. 4 presents the full ray tracing for the two emerging rays of Fig. 3. δ_{PAS} and α_{PAS} are the position and the rotation of the actual PAS with respect to the rear focal plane of the objective, respectively. The point O_2 is the intersection of the PAS with the optical axis. It is the origin of the frame (O_2YZ) : Z is made coincident with the optical axis and Y lies in the Π plane. Δ is the distance between O_2 and O_1 projected onto Y (if $\Delta = 0$, O_1 and O_2 are on the optical axis). γ_{TE} and γ_{TM} define the surface orientation for TE and TM rays, respectively. The two rays emerge from the PAS at the point whose orthogonal projection on the Y axis is Y_{PAS} . Then, they travel through the objective, are reflected by the sample and intersect the PAS at $Y'_{PAS_{TE}}$ and $Y'_{PAS_{TM}}$:

$$\begin{aligned} Y'_{PAS_i} = & -Y_{PAS} - 2 \frac{f_o^2 + Y_{PAS}^2}{f_o} \gamma_i \\ & - 2 \left[\alpha_{PAS} + \left(1 + \frac{1}{n^{*2}} \right) \theta_e + n^* \epsilon \right. \\ & \left. + \frac{e c_{TE}}{2n^{*2}} \right] \delta_{PAS} + o(\alpha_{PAS}^2, \theta_e^2, \theta_{PAS}^2, \epsilon^2, \gamma_i^2) \end{aligned} \quad (19)$$

where i stands for TE or TM .

The position of Y'_{PAS_i} depends on the position of Y_{PAS} , on the objective focal length f_o , on the incidence angle θ_e , on PAS position $(\delta_{PAS}, \alpha_{PAS})$ and on the corresponding surface orientation (γ_i) . As described in equation (18), the optical path length in the prism for TE ray depends on the entrance point. For the back TE path, this entrance point ($Y'_{PAS_{TE}}$) depends on γ_{TE} , so that the back optical path length in the prism for TE ray depends on γ_{TE} . The equation (14) indicates that the optical path length in the prism for TM ray only depends on the incidence angle and does not depend on the entrance point. As a consequence

the optical path length in the prism for TM ray is independent of the TM orientation of the sample γ_{TM} . Finally, the total optical phase thus depends on γ_{TE} . It demonstrates how the system is sensitive to TE orientation of the sample and insensitive to TM one. The TM beam will thus act as a reference beam in the interferometer. The total optical path length arising from the birefringent prism is the difference between the optical path length for TE and TM rays.

$$\phi_p(\gamma_{TE}) = \frac{2\pi}{\lambda} \{ [L_{TE_{\text{forth}}} + L_{TE_{\text{back}}}(\gamma_{TE})] - [L_{TM_{\text{forth}}} + L_{TM_{\text{back}}}] \} \quad (20)$$

Using equations (14), (18) and (20) and first-order expansion of Taylor with respect to α_{PAS} , θ_e , θ_{PAS} , ϵ and γ_{TE} , it reads

$$\phi_p = \phi_{\gamma_{TE}} + \phi_{\theta_e} + \phi_{\Delta} + \phi_r \quad (21)$$

with :

$$\phi_{\gamma_{TE}} = -\frac{4\pi}{\lambda} c_{TE} e \frac{f_o^2 + Y_e^2}{f_o} \gamma_{TE} + o(\gamma_{TE}^2) \quad (22)$$

$$\begin{aligned} \phi_{\theta_e} = & -\frac{2\pi}{\lambda} c_{TE} e \left[2 \left(1 + \frac{1}{n^{*2}} \right) \delta_{PAS} + \frac{e}{n^*} \right] \theta_e \\ & + o(\theta_e^2, \theta_{PAS}^2) \end{aligned} \quad (23)$$

$$\phi_{\Delta} = -\frac{4\pi}{\lambda} c_{TE} e \Delta + o(\theta_{PAS}^2) \quad (24)$$

$$\begin{aligned} \phi_r = & -\frac{2\pi}{\lambda} c_{TE} e \left[\left(2\alpha_{PAS} + \frac{c_{TE} e}{n^{*2}} \right) \delta_{PAS} \right. \\ & \left. + \left(2n^* \delta_{PAS} - \frac{e}{3} \right) \epsilon \right] + o(\alpha_{PAS}^2, \theta_{PAS}^2, \epsilon^2) \end{aligned} \quad (25)$$

where Y_e denotes the entrance point on the prism (on Y axis). Δ can be changed by translating the prism so it will be used for phase modulation.

The rotation sensitivity $\frac{\partial \phi}{\partial \gamma_{TE}}$ depends on the thickness of the prism e and on the birefringence gradient c_{TE} . It also increases with the objective focal length f_o and with the prism entrance point Y_e . So, the equation (21) is only valid for a ray. For the full beam, the rotation sensitivity thus depends on the objective numerical aperture (see Appendix A). In addition, expanding (21) up to the second order shows the rotation sensitivity dependence to the incidence angle and to the implementation defects is negligible.

Finally, the lateral shear d between TE and TM rays on the sample (see Fig. 1) reads

$$d = f_o c_{TE} e + o(\theta_e^2, \theta_{PAS}^2, \alpha_{PAS}^2, \epsilon^2) \quad (26)$$

It depends on the objective focal length f_o as well as on the thickness of the prism and birefringence gradient. d corresponds to the separation, in the Y -direction, between the two reflected images of the sample due to the birefringence.

2.C.2. Optical phase arising from the object

In addition to ϕ_p , there is also a phase contribution arising from the object. Let us consider the case of a tilted and stepped sample (height $\Delta Z = Z_{TE} - Z_{TM}$), where TE and TM rays are reflected at different heights. According to the principle of Fermat, tilting the sample does not induce any additional phase difference in the objective-sample-objective path. However, the step induces an additional phase ϕ_o which reads (assuming the ambient refractive index of the medium is 1)

$$\phi_o = -\frac{4\pi}{\lambda} \Delta Z \cos \alpha \quad (27)$$

where α is the incidence angle on the sample. α spans the full range defined by the objective pupil, so that for the full beam ϕ_o , an integration over α has to be considered (see Appendix A).

3. Calibration and example

As the parameters driving the phase sensitivity to the topography depend on the numerical aperture and thus on the illumination, a calibration procedure is desirable for practical applications. This section presents the calibration experiment of the set-up and an example to validate both the system capabilities and its modeling.

3.A. Calibration experiment

The calibration consists in plotting interferograms obtained by tilting a plane sample. Namely, a PDMS sample, charged with 50wt% of Co nano-particles, is tilted from $\delta\gamma = -5^\circ$ to 5° by 0.05° steps with respect to the (unknown) initial stage orientation γ_d . Intensity images are acquired for each tilt value. This experiment gives one interferogram per pixel, which are used to retrieve modeling parameters. For the calibration, the phase equation for one ray (53) is recast :

$$\phi(K, \gamma_d + \delta\gamma, \Psi, \alpha) = -K[1 + \sin^2(\alpha)][\gamma_d + \delta\gamma] + \Psi \quad (28)$$

with :

$$K = \frac{4\pi}{\lambda} c_{TE} e f_o \quad (29)$$

$$\gamma_d + \delta\gamma = \gamma_{TE} = \gamma_{TM} \quad (30)$$

$$\Psi = \phi_{\theta_e} + \phi_{\Delta} + \phi_r \quad (31)$$

Ψ represents the phase contribution independent from γ_{TE} , as the contribution (27) from the object vanishes in this configuration. Because of the θ_e dependence, Ψ reads

$$\Psi = \Psi_a Y + \Psi_b \quad (32)$$

with :

$$\Psi_a Y = \phi_{\theta_e} \quad \Psi_b = \phi_{\Delta} + \phi_r \quad (33)$$

Let us denote NA the numerical aperture of the objective. Taking the full aperture into account, equation (1) is modified by weighting and summing all useful rays of the light beam (see Appendix A) and the intensity equation (54) reads

$$I(K, \gamma_d + \delta\gamma, \Psi, \gamma_c, NA, m) = I_0 + AF(\gamma_d + \delta\gamma, \gamma_c, NA, m, K, \Psi) \quad (34)$$

F is the weighted sum of the contribution of each useful rays (some light rays are lost in the pupil of the objective, depending on the tilt). m is a parameter used to describe the pupil illumination. It is used in the apodization function P_m which corresponds to the repartition of light on the pupil ($P_m(\alpha) = [\cos(\alpha)]^m$). γ_c is used to account for negligible phenomena not taken into consideration in the model, such as the distance between the pupil and the rear focal plane. It modifies the pseudo-period of the intensity with the tilt. For the sake of generality γ_c is assumed to depend on Y :

$$\gamma_c = \gamma_{c_a} Y + \gamma_{c_b} \quad (35)$$

The involved parameters thus fall into two categories. The first one contains global parameters (parameters which have the same value for all pixels) : K , γ_d , NA , m , Ψ_a , Ψ_b , γ_{c_a} and γ_{c_b} . The second one contains the local parameters (parameters which have a different value for each pixel) : I_0 and A . Starting with a set of global parameters p , the first step of the identification procedure consists in calculating $F(p, \delta\gamma)$ for all values of $\delta\gamma$. For each pixel (i, j) one thus defines the local residual :

$$R_0^2(p, I_0(i, j), A(i, j)) = \sum_{\delta\gamma} \{I_{\text{exp}}(i, j, \delta\gamma) - [I_0(i, j) + A(i, j)F(p, \delta\gamma)]\}^2 \quad (36)$$

The optimal values $I_{0_{\text{optimum}}}(i, j)$ and $A_{\text{optimum}}(i, j)$ are obtained as the minimizers of the residual R_0^2 . Using more than 2 different $\delta\gamma$ values, the stationarity condition yields an overdetermined linear system for each pixel. The description quality is then locally assessed through

$$R_1^2(p, i, j) = \min_{I_0(i, j), A(i, j)} R_0^2(p, I_0(i, j), A(i, j)) \quad (37)$$

A global residual taking in consideration residuals R_1^2 for every pixels is then defined :

$$R_2^2(p) = \frac{\sum_{i, j} R_1^2(p, i, j)}{\sum_{i, j} \sum_{\delta\gamma} [I_{\text{exp}}(i, j, \delta\gamma)]^2} \quad (38)$$

The set of parameters p_{optimum} is retrieved as the minimizer of R_2^2 , using the conjugate gradient algorithm. Let us define the final residual which reads

$$R_3^2 = \min_p R_2^2(p) \quad (39)$$

$p_{\text{optimum}}, I_{0_{\text{optimum}}}(i, j), A_{\text{optimum}}(i, j)$ is then the set of fitted parameters. This calibration has to be performed after each modification of the set-up.

The interferograms for three different pixels, along the Y -direction, are displayed in Fig. 5. The position of interferogram center is driven by Ψ . The attenuation of the signal with absolute tilt (upper envelope) is driven by NA , m and γ_d . The pseudo-period is driven by NA , K and γ_c . The experimental, identified global and local parameters values, all calculated on 160 pixels distributed regularly along the 2 lines of Fig. 6 (80 regularly spaced pixels by line) are given on Tables 1, 2 and 3, respectively. The comparison between the fitted and the experimental values shows that the fitted value of NA is the same as the experimental one within 2.4%. m is almost 0 so the repartition of light on the pupil is almost homogeneous. The retrieved value for K is lower than the estimated one, it is, to a large extent, due to c_{TE} which is estimated with an uncertainty of almost 10%. The identified initial stage misorientation γ_d is about 3.7° which is a realistic value because the surfaces of the sample are not parallel. Finally, the residual R_3^2 is about 2.31×10^{-3} thereby proving the identification quality.

3.B. Phase modulation calibration

The Δ -sensitivity ($s_\Delta = \frac{\partial\phi}{\partial\Delta}$) will be used in the following subsection (3.C) for phase modulation and has thus to be estimated. It is proposed to change Δ from a known value $\delta\Delta$ (here : $\delta\Delta = 0.5$ mm) and to reproduce the above-described calibration experiment. For this second calibration, global parameters are set to the previously identified values p_{optimum} (obtained in the previous section), except the parameter Ψ_b which is changed to Ψ'_b :

$$\Psi'_b = \phi_{\Delta+\delta\Delta} + \phi_r = \Psi_b + \phi_{\delta\Delta} = \Psi_b + s_\Delta\delta\Delta \quad (40)$$

Ψ_b is the homogeneous part of the γ_{TE} -independent contribution of the phase. The calibration procedure is the same as in the previous section but the last minimization is performed with respect to Ψ'_b instead of the full set p . For the actual set-up (experimental parameters values are given in on Table 1), one obtains :

$$s_{\Delta_{\text{th}}} = -\frac{4\pi}{\lambda}c_{TE}e \simeq -8.36 \times 10^3 \text{ rad.m}^{-1} \quad (41)$$

$$s_{\Delta_{\text{exp}}} = \frac{\Psi'_b - \Psi_b}{\delta\Delta} \simeq -6.66 \times 10^3 \text{ rad.m}^{-1} \quad (42)$$

The difference between the theoretical and the experimental values is, to a large extent, due to c_{TE} and is consistent with the error on K :

$$K_{\text{th}} = \frac{4\pi}{\lambda}c_{TE}ef_o \simeq 167 \text{ rad.rad}^{-1} \quad (43)$$

$$K_{\text{exp}} \simeq 147 \text{ rad.rad}^{-1} \quad (44)$$

$$\frac{K_{\text{th}}}{|s_{\Delta_{\text{th}}}|} = f_o = 20 \text{ mm} \quad (45)$$

$$\frac{K_{\text{exp}}}{|s_{\Delta_{\text{exp}}}|} \simeq 22.1 \text{ mm} \quad (46)$$

The value of Δ -sensitivity can be compare with the parameter K . The identification is consistent because the ratios (theoretical and experimental) between the 2 parameters give the same value within 10%, thereby proving the slight discrepancy obtained on K results from the product $c_{TE}e$. In addition, the value of the shear d (Eq. (26)) is compared with the parameter K . d is obtained by measuring the separation between the 2 superimposed pictures on an intensity image. One obtains $d_{\text{exp}} \simeq 7.86 \mu\text{m}$ which should be compared to $d_{\text{th}} = c_{TE}ef_o = 8.34 \mu\text{m}$. Considering the ratios

$$\frac{K_{\text{th}}}{d_{\text{th}}} = \frac{4\pi}{\lambda} \simeq 20.0 \mu\text{m}^{-1} \quad (47)$$

$$\frac{K_{\text{exp}}}{d_{\text{exp}}} \simeq 18.7 \mu\text{m}^{-1} \quad (48)$$

The identification is consistent with a discrepancy in $c_{TE}e$ because the ratios (theoretical and experimental) between the 2 parameters give the same value at almost 6.5%.

3.C. Example of phase map

The goal is to measure the rotation field around a tip (radius $\sim 10 \mu\text{m}$) which presses onto a sample. The validation experiment consists in pressing a tip onto the specimen described in Sect.3.A.

The considered phase-stepping method makes use of 4 pictures obtained for $\Delta_k = [0, 0.1, 0.2, 0.3]$ mm. Using the equation (1) to approximate the intensity (a small range of tilt is swept so interferograms remain similar to a sine curve), the measured intensities read

$$I_{\text{exp}}(i, j, \Delta_k) = I_0(i, j) + A(i, j) \cos[\phi(i, j) + s_{\Delta}\Delta_k] \quad (49)$$

Equation (49) therefore yields 4 equations per pixel for only 3 unknowns ($I_0(i, j)$, $A(i, j)$ and $\phi(i, j)$), so that ϕ is obtained by solving it in a least-square sense.

A phase map example is presented on Fig.6. It is obtained when pressing a tungsten tip (radius = $30 \mu\text{m}$) onto an opaque sample of PDMS, charged with 50wt% of Co nano-particles (sample thickness ≈ 2.6 mm). The noise is obtained by making 2 identical phase maps and averaging the difference between them. The noise on phase ϕ_{noise} is estimated to 8.9×10^{-3} rad. The phase map is described in the $(O_T X_T Y_T)$ plane, with O_T the tip loading point. X_T and Y_T are oriented as X and Y . Let us comment the phase along Y_T axis in 2 different parts of the phase map. The first one corresponds to the zone far from the tip (dotted line on Fig. 6) where the sample is not deformed. The phase is linear with respect to Y_T (circles on Fig. 7), as a result of the dependence on the incidence angle (θ_e). It corresponds to the parameter Ψ presented in the calibration subsection. The phase equation reads

$$\phi_{\text{far from the tip}} = \phi_{\theta_e} + \phi_{\Delta} + \phi_r = \Psi_a Y + \Psi_b = \Psi \quad (50)$$

The theoretical phase far from tip on Fig. 7 is a plotting of Ψ coming from the calibration subsection, along the Y_T axis. The good agreement validates the proposed modeling. The crosses on Fig. 7 correspond to a zone (solid line on Fig. 6) where the sample is deformed by the tip so the γ_{TE} -contribution of the optical phase is activated. The presence of a phase deviation from the previous line in the vicinity of the tip, shows the presence of the rotation

field in the Y -direction. This phase map proves that the system allows one to measure the rotation field of localized phenomena (here, a few tens of micrometer). Let us assume that the situation corresponds to the problem of Boussinesq [14] : an elastic half-space with a point load. In this case the displacement w scales as $w(X_T, Y_T) = -P/(\pi E^* r)$ (with $r = \sqrt{X_T^2 + Y_T^2}$: the in-plane distance between the loading point and the point of interest, see Fig. 6, P the loading onto the sample and $E^* = E/(1 - \nu^2)$ the biaxial Young's modulus of the sample) and the rotation θ as $\theta(X_T, Y_T) = P/(\pi E^* r^2)$. So, the measured rotation field scales as $\gamma_{TE}(X_T, Y_T) = PY_T/(\pi E^* r^3)$ and the contribution from the object scales as $\Delta Z(X_T, Y_T, d) = w(X_T, Y_T) - w(X_T, Y_T - d)$, because the measure is only made in the Y -direction. Finally, the phase equation can reads

$$\begin{aligned}
\phi_{\text{tip}} &= \phi_{\theta_e} + \phi_{\Delta} + \phi_r + \phi_{\gamma_{TE}} + \phi_o \\
&= \Psi_a Y + \Psi_b + \frac{\partial \phi}{\partial \gamma_{TE}} \gamma_{TE}(X_T, Y_T) \\
&\quad + \frac{\partial \phi}{\partial \Delta Z} \Delta Z(X_T, Y_T, d)
\end{aligned} \tag{51}$$

with : X_T fixed on the line, Y_T variable along the line.

The solution of Boussinesq (solid line close to the tip on Fig. 7) anyway fits the measured phase, thereby demonstrating the ability of the set-up to catch a localized phenomenon.

4. Conclusions

The proposed set-up makes use of a birefringent prism whose fabrication procedure is presented. It allows one to access the rotation field of reflecting surfaces, projected onto a particular prism direction. It must be highlighted that the set-up is therefore well suited to localized phenomena. This method is particularly useful for situations where scale effects require to measure the rotation instead of the out-of-plane displacement. The noise on the phase measurement is estimated to 8.9×10^{-3} rad without any image accumulation. As a consequence, it is thought to be useful to study the deformation of samples in scanning microdeformation microscopy. A detailed modeling including aperture effects is proposed, and a calibration procedure allows one to retrieve the parameters required by a quantitative use of the obtained phase maps. The ability of the set-up to catch localized mechanical phenomena is therefore demonstrated. Future work will thus focus on coupling this imaging arrangement with a SMM set-up.

A. Effect of the numerical aperture on the interferogram

In subsection 2.C.1 and 2.C.2, expressions of the optical phase arising from the birefringent prism and from the object were calculated (Eq. (21) and (27)). It is shown that, for one ray,

the phase depends on entrance point of the prism Y_e and on incidence angle α . It means that, for the full beam, the phase depends on the objective numerical aperture ($NA = \sin(\alpha_{max})$). The sine condition [24] yields :

$$\sin(\alpha) = -\frac{Y_e}{f_o} + o(\theta_e^2, \alpha_{PAS}^2, \theta_{PAS}^2) \quad (52)$$

So that using equations (21), (27), the total phase difference reads

$$\begin{aligned} \phi(\gamma_{TE}, \alpha) = & -\frac{4\pi}{\lambda} c_{TE} e f_o [1 + \sin^2(\alpha)] \gamma_{TE} \\ & - \frac{4\pi}{\lambda} \Delta Z \cos \alpha + \phi_{\theta_e} + \phi_{\Delta} + \phi_r + o(\gamma_{TE}^2) \end{aligned} \quad (53)$$

To assess the effect of the numerical aperture, it is necessary to consider the contribution of every angle of incidence (see Fig. 8a), based on the equations (1) and (53). The light intensity is obtained by summing the contribution of every useful rays :

$$I(\gamma_{TE}, \gamma_c, NA, m) = I_0 + AF(\gamma_{TE}, \gamma_c, NA, m) \quad (54)$$

F is obtained by weighting and summing the contribution of each ray over the numerical aperture. Because of the tilting, a part of the light beam is not collected at the level of the pupil of the objective so that only the useful rays are considered. Useful rays correspond to surface which is not hatched on Fig. 8b and thus define the integration bounds in the following F equations.

For $\gamma_{TE} \geq 0$:

$$\begin{aligned} F(\gamma_{TE}, \gamma_c, NA, m) = & \left\{ 2 \int_{\theta_1}^{\pi} \int_{\alpha_1}^{\alpha_2(\theta)} f_1(\gamma_{TE}, \alpha, m) d\theta d\alpha \right. \\ & \left. + 2 \int_0^{\theta_2} \int_{\alpha_1}^{\alpha_3(\theta')} f_1(\gamma_{TE}, \alpha, m) d\theta' d\alpha \right\} \\ & / \left\{ 2 \int_{\theta_1}^{\pi} \int_{\alpha_1}^{\alpha_2(\theta)} f_2(\alpha) d\theta d\alpha + 2 \int_0^{\theta_2} \int_{\alpha_1}^{\alpha_3(\theta')} f_2(\alpha) d\theta' d\alpha \right\} \end{aligned} \quad (55)$$

and for $\gamma_{TE} \leq 0$:

$$\begin{aligned} F(\gamma_{TE}, \gamma_c, NA, m) = & \left\{ 2 \int_0^{\theta_1} \int_{\alpha_2(\theta)}^{\alpha_1} f_1(\gamma_{TE}, \alpha, m) d\theta d\alpha \right. \\ & \left. + 2 \int_{\theta_2}^{\pi} \int_{\alpha_3(\theta')}^{\alpha_1} f_1(\gamma_{TE}, \alpha, m) d\theta' d\alpha \right\} \\ & / \left\{ 2 \int_0^{\theta_1} \int_{\alpha_2(\theta)}^{\alpha_1} f_2(\alpha) d\theta d\alpha + 2 \int_{\theta_2}^{\pi} \int_{\alpha_3(\theta')}^{\alpha_1} f_2(\alpha) d\theta' d\alpha \right\} \end{aligned} \quad (56)$$

with :

$$f_1(\gamma_{TE}, \alpha, m) = \cos[\phi(\gamma_{TE}, \alpha)] P_m(\alpha) \sin \alpha \quad (57)$$

$$f_2(\alpha) = P_1(\alpha) \sin \alpha \quad (58)$$

$$\theta_1 = \arccos\left(\frac{2Y_{0p}}{D_{pup}}\right) \quad (59)$$

$$\theta_2 = \arccos\left(\frac{-2Y_{0p}}{D_{pup}}\right) \quad (60)$$

$$\alpha_1 = \arcsin\left(\frac{-Y_{0p}}{f_o}\right) \quad (61)$$

$$\alpha_2(\theta) = \arcsin(-NA \cos \theta) \quad (62)$$

$$\alpha_3(\theta') = \arcsin\left(-NA \cos \theta' - \frac{2Y_{0p}}{f_o}\right) \quad (63)$$

$$Y_{0p} = \frac{g}{2} = -\frac{D_{pup}}{2} \frac{1 + NA^2}{2NA} (\gamma_{TE} + \gamma_c) + o(\gamma_{TE}^2, \gamma_c^2) \quad (64)$$

D_{pup} is the diameter of the pupil. g and Y_{0p} are defined in $(O_p X_p Y_p)$, a plane in the rear focal plane, orientated as $(O_2 XY)$ and with O_p the center of the pupil. g is the distance between O_p and the center of the reflected beam C_p which depends on γ_{TE} . Y_{0p} is the center of $[O_p C_p]$. γ_c describes a perturbation on the collected flux (see Fig. 8a). It is used to take into consideration negligible phenomena not present in the model. Among other things, this angle is related to the distance between the pupil and the rear focal plane, the light beam divergence and the decentering of the beam with respect to the optical axis.

$$\sin(\alpha) = \frac{r \cos(\theta)}{f_o} = \frac{r' \cos(\theta') - g}{f_o} \quad (65)$$

$(O_p r \theta)$ and $(C_p r' \theta')$ are two cylindrical coordinate systems (see Fig. 8b) used for the integration. P_m is the apodization function, it corresponds to the repartition of light on the pupil. There are many possible choices for this function [25] and one chooses

$$P_m(\alpha) = [\cos(\alpha)]^m \quad (66)$$

m is a parameter used to describe the pupil illumination. In equations (55) and (56), the function P_1 appears in denominator, for the weighting of F . It is possible to choose any value of m but using $m = 1$ the denominator is analytically integrable so that the computation time in the calibration process decreases noticeably.

References

1. W. C. Oliver and G. M. Pharr, "An improved technique for determining hardness and elastic modulus using load and displacement sensing indentation experiments," J. Mater.

- Res. **7**, 1564-1583 (1992).
2. U. Rabe, S. Amelio, E. Kester, V. Scherer, S. Hirsekorn and W. Arnold, "Quantitative determination of contact stiffness using atomic force acoustic microscopy," *Ultrasonics* **38**, 430-437 (2000).
 3. B. Cretin and F. Sthal, "Scanning microdeformation microscopy," *Appl. Phys. Lett.* **62**, 829-831 (1993).
 4. B. Cretin and P. Vairac, "Measurement of cantilever vibrations with a new heterodyne laser probe - application to scanning microdeformation microscopy," *Appl. Phys. A* **66**, S235-S238 (1998).
 5. P. Vairac and B. Cretin, "Electromechanical resonator in scanning microdeformation microscopy: theory and experiment," *Surf. Interface Anal.* **27**, 588-591 (1999).
 6. P. Vairac, S. Ballandras and B. Cretin, "Finite Element Analysis of the Behavior of the Scanning Microdeformation Microscope," *IEEE Trans. Ultrason Ferroelec. Freq. Contr.* **48**, 895-899 (2001).
 7. J. Le Rouzic, P. Delobelle, P. Vairac and B. Cretin, "Comparison of three different scales techniques for the dynamic mechanical characterization of two polymers (PDMS and SU8)," *Eur. Phys. J. Appl. Phys.* **48**, 11201 (2009).
 8. M.J. Bamber, K.E. Cooke, A.B. Mann and B. Derby, "Accurate determination of Young's modulus and Poisson's ratio of thin films by a combination of acoustic microscopy and nanoindentation," *Thin Solid Films* **398-399**, 299-305 (2001).
 9. R. Feng and R.J. Farris, "The characterization of thermal and elastic constants for an epoxy photoresist SU8 coating," *J. Mater. Sci.* **37**, 033509 (2002).
 10. D.C. Hurley and J.A. Turner, "Measurement of Poisson's ratio with contact-resonance atomic force microscopy," *J. Appl. Phys.* **102**, 033509 (2007).
 11. J. Le Rouzic, P. Delobelle, B. Cretin, P. Vairac and F. Amiot, "Simultaneous measurement of Young's modulus and Poisson's ratio at microscale with two-modes scanning microdeformation microscopy," *Mat. Lett.* **68**, 370-373 (2012).
 12. M. Françon and S. Mallick, "Compensated Polarization Interferometers for the Observation of Phase Objects," in *Polarization interferometers: applications in microscopy and macroscopy*, Wiley-Interscience (1971), pp. 55-67.
 13. F. Amiot and J.P. Roger, "Nomarski imaging interferometry to measure the displacement field of micro-electro-mechanical systems," *Appl. Opt.* **45** (30), 78007810 (2006).
 14. M. J. Boussinesq, "Valeurs des déplacements, des déformations et de pressions intérieures, quand les potentiels se réduisent à un seul de leurs éléments," in *Application des potentiels à l'étude de l'équilibre et du mouvement des solides élastiques*, Gauthier-Villars (1885), pp. 81-108 (in French).
 15. A. Boisen, S. Dohn, S.S. Keller, S. Schmid and M. Tenje, "Cantilever-like micromechan-

- ical sensors,” Reports on Progress in Physics **74** (3), 036101 (2011).
16. D. Malacara and O. Harris, “Interferometric measurement of angles,” Appl. Opt. **9**, 1630-1633 (1970).
 17. G. D. Chapman, “Interferometric angular measurement,” Appl. Opt. **13**, 1646-1651 (1974).
 18. P. Shi and E. Stijns, “New optical method for measuring small-angle rotation,” Appl. Opt. **27**, 4342-4346 (1988).
 19. C. J. Tay, C. Quan, S. H. Wang and H. M. Shang, “Determination of a micromirror angular rotation using laser interferometric method,” Opt. Commun. **195**, 71-77 (2001).
 20. W. Gao, P. S. Huang, T. Yamada and S. Kiyono, “A compact and sensitive two-dimensional angle probe for flatness measurement of large silicon wafers,” Precis. Eng. **26**, 396-404 (2002).
 21. M. Xiao, S. Jujo, S. Takahashi and K. Takamasu, “Nanometer profile measurement of large aspheric optical surface by scanning deflectometry with rotatable devices - Uncertainty propagation analysis and experiments,” Precis. Eng. **36**, 91-96 (2012).
 22. Y. Surrel, N. Fournier, M. Grédiac and P.-A. Paris, “Phase-stepped deflectometry applied to shape measurement of bent plates,” Exp. Mech. **39**, 66-70 (1999).
 23. J.-R. Lee, J. Molimard, A. Vautrin and Y. Surrel, “Digital phase-shifting grating shearography for experimental analysis of fabric composites under tension,” Compos. Part. A- Appl. S. **35**, 849-859 (2004).
 24. M. Born, E. Wolf and A.B. Bhatia, “Geometrical theory of optical imaging,” in *Principles of optics: electromagnetic theory of propagation, interference and diffraction of light*, Cambridge University Press (1959), pp. 133-202.
 25. A. Dubois, J. Selb, L. Vabre and A.C. Boccara, “Phase measurements with wide-aperture interferometers,” Appl. Opt. **14**, 2326-2331 (2000).

Table 1. Estimated parameters.

LED		Objective	
λ (nm)		f_o (mm)	NA
627		20	0.45
Prism		Rotation sensitivity	
c_{TE} (m^{-1})	e (mm)	K (rad.rad $^{-1}$)	
0.139	3	167	

Table 2. Fitted global parameters.

NA	m	K (rad.rad $^{-1}$)
0.439	2.78×10^{-4}	147
γ_{c_a} (rad. μm^{-1})	γ_{c_b} (rad)	γ_d (rad)
2.30×10^{-4}	0.117	-6.45×10^{-2}
Ψ_a (rad. μm^{-1})	Ψ_b (rad)	R_3^2
-1.87×10^{-2}	4.82	2.31×10^{-3}

Table 3. Fitted local parameters.

Interferogram	X (μm)	Y (μm)	I_0 (GL)	A (GL)	Ψ (rad)	γ_c (rad)
(a)	42.5	62.7	672	234	3.65	0.132
(b)	42.5	183	695	251	1.40	0.160
(a)	42.5	303	620	224	-0.853	0.187

List of Figure Captions

Fig. 1. Schematic view of the interferometric imaging set-up.

Fig. 2. Arrangement used to establish a stress gradient in the sample. The prism is cut out of the specimen gauge section.

Fig. 3. Ray tracing in the prism.

Fig. 4. Ray tracing through the objective for the two emerging rays of Fig.3.

Fig. 5a. Tilting sample interferograms. For $Y = 183 \mu\text{m}$ and for $\delta\gamma$ ranging from -5° to 5° .

Fig. 5b. Tilting sample interferograms. For $Y = \{62.7, 183, 303\} \mu\text{m}$ and for $\delta\gamma$ ranging from -2° to 3° .

Fig. 6. Phase map obtained when pressing a tip onto a PDMS sample.

Fig. 7. Phase along Y_T axis. Circles : experimental phase far from the tip. Crosses : experimental phase close to the tip. Solid lines : theoretical phases far and close to the tip.

Fig. 8a. Ray tracing illustrating the light collection as a function of the tilt of the sample.

Fig. 8b. Collected light in the plane of the pupil.

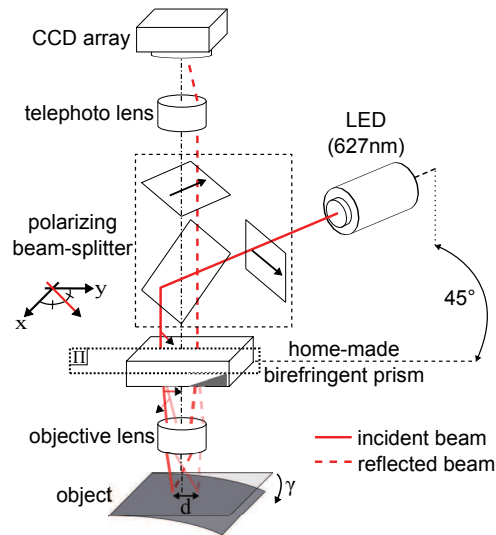


Fig. 1. Schematic view of the interferometric imaging set-up.

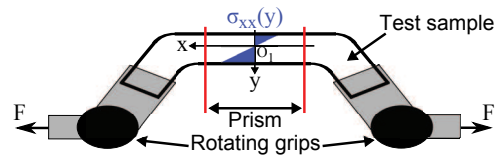


Fig. 2. Arrangement used to establish a stress gradient in the sample. The prism is cut out of the specimen gauge section.

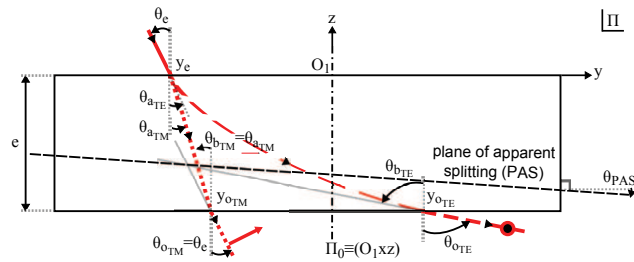


Fig. 3. Ray tracing in the prism.

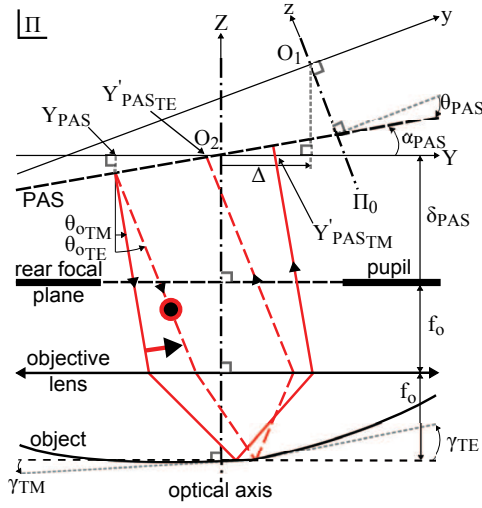
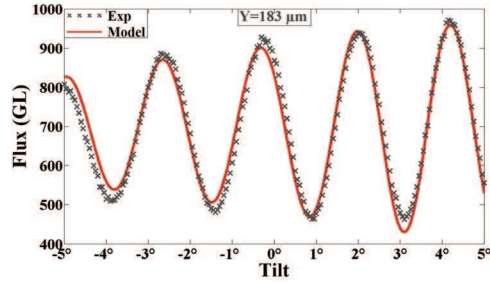
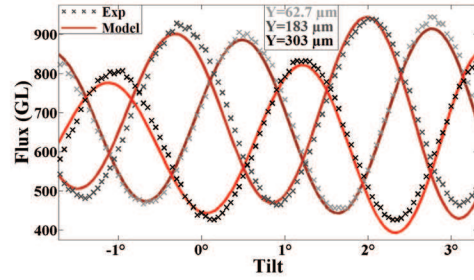


Fig. 4. Ray tracing through the objective for the two emerging rays of Fig.3.



(a)



(b)

Fig. 5. Tilting sample interferograms. (a) For $Y = 183 \mu\text{m}$ and for $\delta\gamma$ ranging from -5° to 5° . (b) For $Y = \{62.7, 183, 303\} \mu\text{m}$ and for $\delta\gamma$ ranging from -2° to 3° .

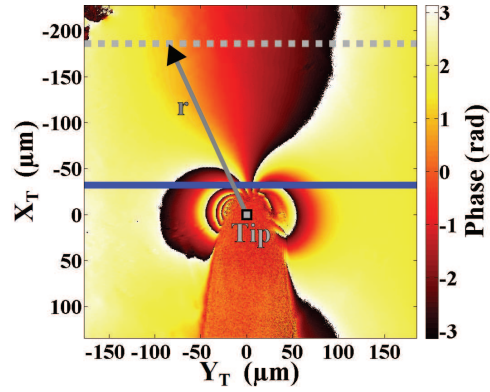


Fig. 6. Phase map obtained when pressing a tip onto a PDMS sample.

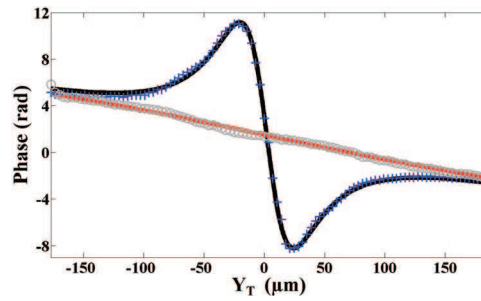


Fig. 7. Phase along Y_T axis. Circles : experimental phase far from the tip. Crosses : experimental phase close to the tip. Solid lines : theoretical phases far and close to the tip.

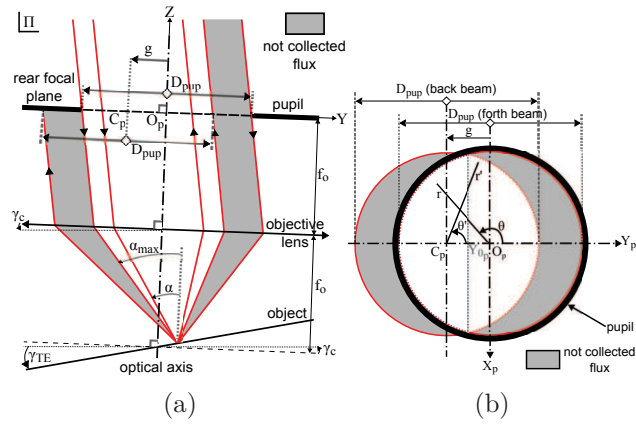


Fig. 8. (a) Ray tracing illustrating the light collection as a function of the tilt of the sample. (b) : Collected light in the plane of the pupil.