



HAL
open science

Muscle as a Metamaterial Operating Near a Critical Point

Matthieu Caruel, Jean-Marc Allain, Lev Truskinovsky

► **To cite this version:**

Matthieu Caruel, Jean-Marc Allain, Lev Truskinovsky. Muscle as a Metamaterial Operating Near a Critical Point. *Physical Review Letters*, 2013, 110, pp.248103. 10.1103/PhysRevLett.110.248103 . hal-00834683v2

HAL Id: hal-00834683

<https://hal.science/hal-00834683v2>

Submitted on 25 Jun 2013

HAL is a multi-disciplinary open access archive for the deposit and dissemination of scientific research documents, whether they are published or not. The documents may come from teaching and research institutions in France or abroad, or from public or private research centers.

L'archive ouverte pluridisciplinaire **HAL**, est destinée au dépôt et à la diffusion de documents scientifiques de niveau recherche, publiés ou non, émanant des établissements d'enseignement et de recherche français ou étrangers, des laboratoires publics ou privés.

Muscle as a Metamaterial Operating Near a Critical Point

M. Caruel,^{1,2} J.-M. Allain,² and L. Truskinovsky^{2,*}

¹*Inria, 1 rue Honoré d'Estienne d'Orves, 91120 Palaiseau, France*

²*LMS, CNRS-UMR 7649, Ecole Polytechnique, 91128 Palaiseau Cedex, France*

(Dated: June 26, 2013)

The passive mechanical response of skeletal muscles at fast time scales is dominated by long range interactions inducing cooperative behavior without breaking the detailed balance. This leads to such unusual “material properties” as negative equilibrium stiffness and different behavior in force and displacement controlled loading conditions. Our fitting of experimental data suggests that “muscle material” is finely tuned to perform close to a critical point which explains large fluctuations observed in muscles close to the stall force.

PACS numbers: Valid PACS appear here

Active behavior of skeletal muscles is associated with time scales of about 30 ms [1]. At shorter times (~ 1 ms) muscles exhibit a nontrivial *passive* response: if a tetanized muscle is suddenly extended, it comes loose, and if it is shortened, it tightens up with apparently no involvement of Adenosine Triphosphate (ATP) [2]. This unusual mechanical behavior, associated with the unfolding of the attached myosin cross-linkers (cross-bridges), qualifies muscles as metamaterials [3]. As we argue below, an important factor in this behavior is the dominance of parallel connections with multiple shared links entailing cooperative effects; see Fig. 1. Similar mean-field coupling can be found in many hierarchical biological systems [4]; in particular, it plays a crucial role in cell adhesion, where individual binding elements interact through a common elastic background [5].

Interaction-induced synchronization during muscle contractions reveals itself through macroscopic fluctuations and spatial inhomogeneities [6]. In ratchet-based and chemomechanical models such collective behavior is usually attributed to breaking of the detailed balance [7], with long range interactions entering the problem implicitly as a force dependence of the chemical rates [8]. However, the cooperative behavior of myosin cross-bridges can be detected during short time force recovery [9], and therefore the origin of synchronization should be within reach of models disregarding disequilibrium and activity. In this Letter, we show that already equilibrium response of “muscle material” is associated with highly synchronized behavior at the microscale which explains its unusual passive response.

In particular, we show that an order-disorder phase transition is displayed by the celebrated Huxley-Simmons (HS) model [2] if, instead of physiological isometric loading conditions (length clamp) also known as a *hard device*, one considers isotonic (load clamp) loading conditions or a *soft device*. While a considerable difference in behavior of a muscle loaded in these two different ways can be deduced from experimental data [10], the origin of the disparity has been so far unexplained. We argue that behind it is a nonequivalence of equilibrium ensem-

bles ubiquitous in systems with long range interactions [11].

Most remarkably, we find that a careful parameter fitting places the actual skeletal muscle almost exactly into a ferromagnetic Curie point. This agrees with the observation [2] that the effective stiffness of skeletal muscles associated with fast force recovery is close to zero in the state of isometric contractions and strongly suggests that muscles are finely tuned to perform near marginal stability. Other experimentally observed manifestations of criticality include kinetic slowing down and large scale macroscopic fluctuations near the stall force conditions [9].

We demonstrate the robustness of our predictions by comparing the HS model, which we interpret as a hard spin description, with a regularized (RHS) model where filament elasticity is taken into consideration and conventional spins are replaced by elastic snap springs.

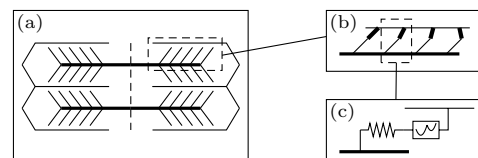


FIG. 1. Schematic structure of the three layers of organization inside a sarcomere: (a) global architecture with domineering parallel links; (b) structure of an elementary contractile unit shown in more detail in Fig. 2; (c) individual attached cross-bridge represented by a bistable element in series with a shear spring.

The HS model.— We consider a prototypical model of a half-sarcomere with N attached cross-bridges arranged in parallel [2]; at time scales of fast force recovery N can be considered constant [2, 10]. Each cross-bridge is modeled as a series connection of a bistable spin unit and a linear (shear) spring; see Fig. 2. We use dimensionless variables with the power-stroke size a as a unit of displacement and κa^2 as the unit of energy, where κ is the stiffness of the series spring. Then the spin variable takes values $x_i = 0$ (pre-power-stroke state) and $x_i = -1$ (post-power-stroke

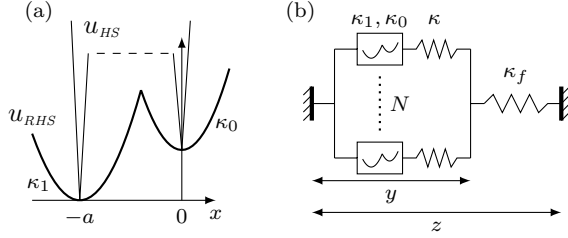


FIG. 2. Elementary contractile unit. (a) Energy of the bistable (power-stroke) element: HS model (thin line) and RHS model (thick line); (b) N cross-bridges in hard device. In the HS model, $\kappa_0, \kappa_1, \kappa_f = \infty$ and $y = z$.

state), and the total energy per particle in the hard device is $v(\mathbf{x}, z) = (1/N) \sum [(1 + x_i)v_0 + (1/2)(z - x_i)^2]$, where v_0 is the energetic bias of the pre-power-stroke state. In this formulation, the HS model describes the simplest paramagnetic spin system.

At finite temperature θ , the equilibrium behavior of this system is characterized by the free energy per particle $\hat{f}(z, \beta) = -[1/(N\beta)] \ln \int \exp[-\beta N v(\mathbf{x}, z)] d\mathbf{x}$ where $\beta = \kappa a^2 / (k_b \theta)$. At fixed $p = -(1/N) \sum x_i$, representing the fraction of cross-bridges in the post-power-stroke state, the macroscopic ($N \rightarrow \infty$) free energy takes the form

$$f = p \left[\frac{1}{2}(z+1)^2 \right] + (1-p) \left[\frac{1}{2}z^2 + v_0 \right] + \frac{1}{\beta} S(p)$$

where $S(p) = p \log(p) + (1-p) \log(1-p)$. The function $f(p)$ is always convex with a minimum at $\hat{p}(z, \beta) = 1/2 - (1/2) \tanh[(\beta/2)(z - v_0 + 1/2)]$. The equilibrium tension per cross-bridge is then $t = (z + \hat{p})$, which is exactly the formula found by Huxley and Simmons. The equilibrium free energy is

$$\hat{f} = -\frac{1}{\beta} \ln \left\{ \exp \left[-\frac{\beta}{2}(z+1)^2 \right] + \exp \left[-\beta \left(\frac{z^2}{2} + v_0 \right) \right] \right\}$$

and the susceptibility (stiffness) is $t'(z) = \hat{f}''(z)$. The function $\hat{f}(z)$ is convex for $\beta < 4$ and is nonconvex for $\beta > 4$ exhibiting a range with negative equilibrium stiffness (metamaterial behavior). If we take the values from [2], $a = 8$ nm and $\kappa a^2 / 2 = 2k_b \theta$, we obtain $\beta = 4$, which corresponds to zero stiffness at the state of isometric contractions $z_0 = v_0 - 1/2$.

In the soft device setting, not studied by Huxley and Simmons, the energy becomes $w(\mathbf{x}, z, t) = v(\mathbf{x}, z) - tz$, where t is the applied force per particle. Now the variable z plays the role of an internal parameter whose adiabatic elimination produces a Curie-Weiss mean-field potential depending on $(\sum x_i)^2$. The equilibrium Gibbs free energy is now $\hat{g}(t, \beta) = -[1/(N\beta)] \ln \int \exp[-\beta N w(\mathbf{x}, z, t)] d\mathbf{x} dz$. At fixed p we obtain in the thermodynamic limit

$$g = -\frac{1}{2}t^2 + pt + (1-p)v_0 + \frac{1}{2}p(1-p) + \frac{1}{\beta} S(p),$$

where the “regular solution” term is responsible for cooperative (ferromagnetic) behavior.

In Fig. 3, we show the position of the minima of $g(p)$ when t is chosen to ensure that in the paramagnetic phase $\hat{p}(t, \beta) = 1/2$. In the disordered (high temperature) state all cross-bridges are in random conformations, while in the ordered (low temperature) state the system exhibits coherent fluctuations between post-power-stroke and pre-power-stroke configurations. These fluctuations describe *temporal microstructures* responsible for the plateau in the force-elongation relation $\hat{z} = t - \hat{p}$, where \hat{p} is a solution of $t - \hat{p} + 1/2 - v_0 + (1/\beta) \ln[\hat{p}/(1 - \hat{p})] = 0$.

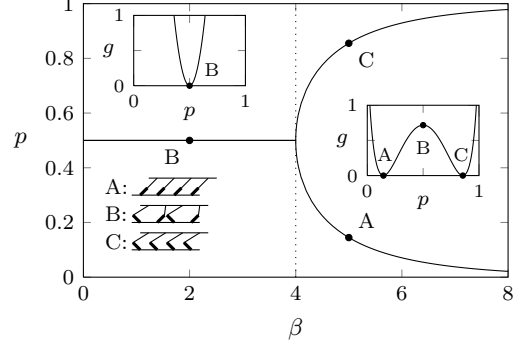


FIG. 3. Bifurcation diagram for the HS model placed in a soft device showing synchronized states (A and C) and disordered state (B). Solid lines shows minima of the Gibbs free energy at $t = 1$. The critical point is located at $\beta = 4$.

The equilibrium Gibbs energy is concave because $\hat{g}''(t) = -1 - \beta N \langle (p - \hat{p})^2 \rangle \leq 0$, so in the soft device the stiffness is always positive. Since in the hard device the stiffness is sign indefinite, the two ensembles are not equivalent. This is expected for systems with strong long range interactions that are inherently nonadditive [11, 12]. Negative stiffness in the hard device HS model has been known for a long time [2, 8, 13, 14]; however, it was not previously associated with the particular internal architecture of muscle material.

As we have already mentioned, the original HS fit of experimental data [2] places the system exactly into the *critical state* (Curie point). In this state the correlation length diverges and fluctuations become macroscopic, which is consistent with observations at stall force conditions [6, 15]. This suggests that skeletal muscles, as many other biological systems, may be tuned to criticality. The proximity to the critical point would then be the result of either evolutionary or functional self-organization. The marginal stability of the critical state allows the system to amplify interactions, ensure strong feedback, and achieve considerable robustness in front of random perturbations. In particular, it is a way to quickly switch back and forth between highly efficient synchronized stroke and stiff behavior in the desynchronized state.

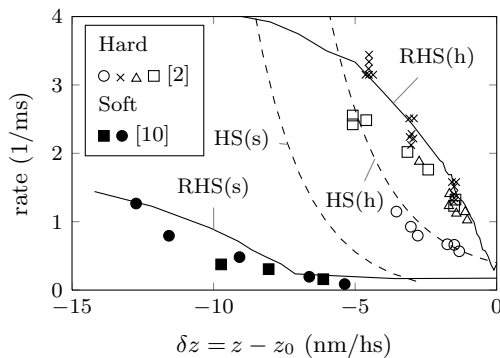


FIG. 4. Recovery rates in hard and soft devices. Symbols: Postprocessing of experimental data; see [10]. Open symbols, hard device; filled symbols, soft device. Dashed lines: HS model in hard (h) and soft (s) devices; parameters are taken from [2]. Solid lines: RHS model in hard (h) and soft (s) devices obtained from stochastic simulations; parameters have been fit to experimental data: $\lambda_1 = 0.41$, $\lambda_0 = 1.21$, $\lambda_f = 0.72$, $l = -0.08$, $N = 112$, $\beta = 52$ ($\kappa = 2$ pN/nm, $a = 10$ nm, $\theta = 277.13$ K), $z_0 = 4.2$ nm/hs.

The ensembles nonequivalence in the HS model has also a kinetic signature. Experiments on quick recovery reveal that muscle fibers react to load steps much slower than to length steps [2, 10]. This agrees with our model, where coherent response (in isotonic conditions) is always slower than disordered response (in isometric conditions).

Indeed, by using Kramers approximation Huxley and Simmons obtained in a hard device the kinetic equation $\langle \dot{p} \rangle = -k_- \langle p \rangle + k_+ (1 - \langle p \rangle)$, where $\langle p \rangle$ is the average over ensemble. The constants k_+ , k_- satisfy the detailed balance $k_+/k_- = \exp[-\beta(z - v_0 + 1/2)]$, and the recovery rate is $1/\tau = k_- \{1 + \exp[-\beta(z - v_0 + 1/2)]\}$. In a soft device we may use the same model with $z = t - \langle p \rangle$, which accounts for force-dependent chemistry and introduces nonlinear feedback. The characteristic rate around a given state $\langle p \rangle$ is then $1/\tau = k_- \{1 + [1 - \beta(1 - \langle p \rangle)] \exp[-\beta(t - \langle p \rangle - v_0 + 1/2)]\}$. When $\langle p \rangle$ is small, $t - \langle p \rangle > z$, and the relaxation in a soft device is slower than in a hard device. In Fig. 4, we show the rates obtained from the HS model; in the case of a soft device, the nonlinear kinetic equation was solved numerically for the duration 10 ms. We see that in a soft device the rates are indeed slower than in a hard device, however, the experimental measurements are not matched quantitatively.

The RHS model.— To test the robustness of the HS mechanism of synchronization and to achieve quantitative agreement with kinetic data, we now consider a natural regularization of the HS model. First, following [14] we replace hard spins by soft spins described by a piecewise quadratic double well potential – see Fig. 2(a)–

$$u_{RHS}(x) = \begin{cases} \frac{1}{2}\lambda_0(x)^2 + v_0 & \text{if } x > l, \\ \frac{1}{2}\lambda_1(x+1)^2 & \text{if } x \leq l, \end{cases}$$

where $\lambda_1 = \kappa_1/\kappa$, $\lambda_0 = \kappa_0/\kappa$. Second, we introduce a mixed device (mimicking myofilament elasticity [7, 16]) by adding to our parallel bundle a series spring. The resulting energy per cross-bridge in a hard device is

$$v(\mathbf{x}, y; z) = \frac{1}{N} \sum_{i=1}^N [u_{RHS}(x_i) + \frac{1}{2}(y - x_i)^2] + \frac{\lambda_f}{2}(z - y)^2,$$

where y is a new internal variable and $\lambda_f = \kappa_f/(N\kappa)$; see Fig. 2(b). It is clear that our lump description of filament elasticity misrepresents short range interactions [17]; however, this should not affect our main results [18].

To study the soft device case we must again consider the energy $w(\mathbf{x}, y, z, t) = v(\mathbf{x}, y, z) - tz$, where t is the applied force per cross-bridge. A transition from hard to soft ensemble is made by taking the limit $\lambda_f \rightarrow 0$, $z \rightarrow \infty$ with $\lambda_f z \rightarrow t$. At finite λ_f the RHS model can be viewed as a version of the mean-field φ^4 model studied in [4, 11].

The HS model is a limiting case of the RHS model with $\lambda_{1,0} \rightarrow \infty$ and $\lambda_f \rightarrow \infty$. The first of these limits allows one to replace continuous dynamics by jumps and use the language of chemical kinetics; however, it also erases information about the barriers; see [14]. The second limit eliminates the Curie-Weiss (mean-field) interaction among individual cross-bridges at fixed z , and that is why the synchronized behavior was overlooked in [2].

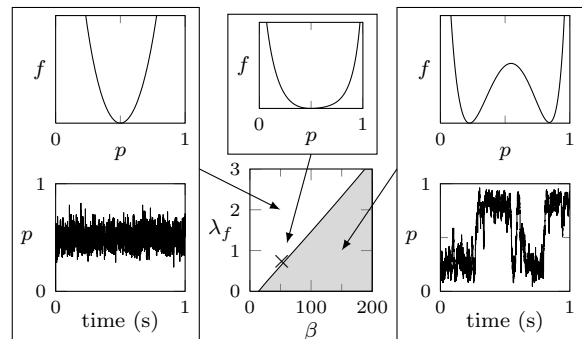


FIG. 5. Phase diagram for the RHS model in a hard device with z selected to ensure that $\langle p \rangle = 1/2$ at each point (β, λ_f) . In the shaded region, the function $f(p)$ is nonconvex which leads to coherent fluctuations. Outside this region, fluctuations are not synchronized. The cross indicates an almost critical configuration with realistic parameters (used in Fig. 4).

Equilibrium behavior in the RHS model can be again described analytically, because it is just a redressed HS model. In the limit $\lambda_f \rightarrow \infty$ the function $f(p)$ is convex as in HS model, while at finite values of λ_f it is now nonconvex. This shows that in the RHS model the account of filament elasticity brings about phase transition (and bistability) also in the hard device.

The bistable nature of the macroscopic free energy in both soft and hard devices implies that the system can

be in two coherent states, and therefore within a large set of half-sarcomeres one should expect observable spatial inhomogeneities. This prediction is in agreement with ubiquitous “off-center” displacements of M lines recorded during isometric contractions [6].

The phase diagram showing the role of filament elasticity in hard device is shown in Fig. 5. The dependence of the critical temperature on λ_f suggests that actomyosin systems can control the degree of cooperativity by tuning the internal stiffness; likewise, variable stiffness of the loading device may be used in experiments to either activate or deactivate the collective behavior. Notice that the realistic choice of parameters again selects a near critical state; the exact criticality is compromised since the symmetry between the pre- and post-power-stroke states is now broken (as $\lambda_1 \neq \lambda_0$) and the phase transition becomes weakly first order; see Fig. 6.

A behavior similar to our synchronization has been also observed in the models of passive adhesive clusters, where the elastic feedback appears as strain- or force-dependent chemistry [5]. Given that the two systems exhibit almost identical cooperative behavior, we expect criticality to be also a factor in the operation of focal adhesions.

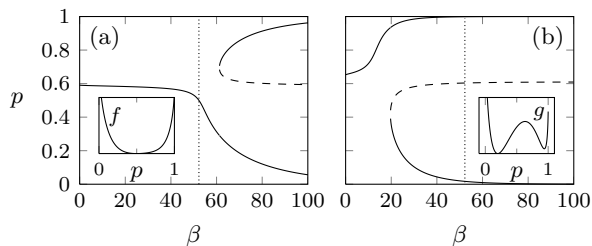


FIG. 6. Bifurcation diagram for nonsymmetric RHS model with realistic parameters: (a) hard device with $z = 0.37$; (b) soft device with $t = 0.21$; this loading secures that $\langle p \rangle = 1/2$ for $\beta = 52$. Parameters are as in Fig. 4. Inset (a) corresponds to $\beta = 52$, inset (b) to $\beta = 25$.

The two ensembles, soft and hard, remain inequivalent in the RHS model. Thus, in the soft device the equilibrium Gibbs free energy \hat{g} is concave since $\hat{g}''(t) = -1/\lambda_f - \beta N \langle (y - \langle y \rangle)^2 \rangle \leq 0$ which means that the stiffness is always positive. Instead in the hard device $\hat{f}''(z) = \lambda_f [1 - \beta N \langle (y - \langle y \rangle)^2 \rangle]$, and the stiffness can be both positive and negative. While negative stiffness should be a characteristic feature of realistic half-sarcomeres (see Fig. 7), it has not been observed in experiments on whole myofibrils. The reason may be that in myofibrils a single half-sarcomere is never loaded in a hard device. The effective dimensionless temperature may also be higher because of the quenched disorder, and the stiffness may be smaller due to nonlinear elasticity. One can also expect the unstable half-sarcomeres to be stabilized actively through processes involving ATP hydrolysis [19].

To study kinetics in the RHS model we perform direct numerical simulations by using a Langevin thermostat. We assume that the macroscopic variables y and z are fast and are always mechanically equilibrated which is not an essential assumption. The response of the remaining variables x_i is governed by the system $dx_i = b(x_i)dt + \sqrt{2\beta^{-1}}dB_i$, where the drift is $b(\mathbf{x}, z) = -u'_{RHS}(x_i) + (1 + \lambda_f)^{-1}(\lambda_f z + N^{-1} \sum x_i) - x_i$ in a hard device and $b(\mathbf{x}, t) = -u'_{RHS}(x_i) + t + N^{-1} \sum x_i - x_i$ in a soft device. In both cases the diffusion term dB_i represents a standard Wiener process.

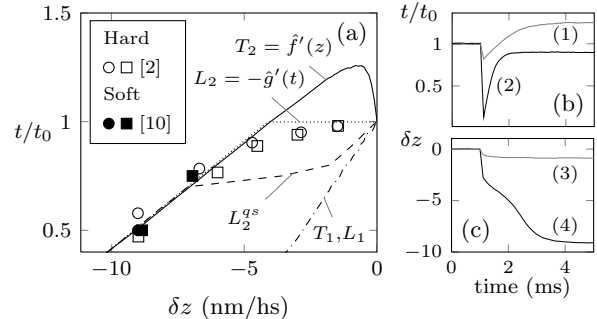


FIG. 7. (a) States attainable during quick recovery: solid line, T_2 ; dotted line, L_2 ; dashed line, L_2^{qs} corresponds to quasistationary states; dash-dotted line, T_1 and L_1 . Symbols show experimental points for hard (open) and soft (filled) devices; see [10]. In a hard device, the equilibrium T_2 curve coincides with the results of stochastic simulations. In a soft device, the equilibrium L_2 curve differs from the simulation results at 10 ms (L_2^{qs} curve). Averaged trajectories after abrupt loading at 1 ms: (b) in a hard device and (c) in a soft device. Curve (1): $\delta z = -1$ nm/hs; curve (2): $\delta z = -5$ nm/hs; curve (3): $t/t_0 = 0.9$; curve (4): $t/t_0 = 0.5$ with $t_0 = 0.21$. Other parameters are as in Fig. 4.

In Fig. 7, we show the results of stochastic simulations imitating quick recovery experiments [2]. The system, initially in thermal equilibrium at fixed z_0 (or t_0), was perturbed by applying fast ($\sim 100 \mu s$) length (or load) steps with various amplitudes. In a soft device the system was not able to reach equilibrium within the experimental time scale. Instead, it remained trapped in a quasistationary (glassy) state because of the high energy barrier associated with collective power stroke. Such kinetic trapping which fits the pattern of two-stage dynamics exhibited by systems with strong long range interactions [11, 20] may explain the failure to reach equilibrium in experiments reported in [9]. In the hard device case, the cooperation among the cross-bridges is weaker and kinetics is much faster, allowing the system to reach equilibrium at the experimental time scale. A quantitative comparison of the rates obtained in our simulations with experimental values (see Fig. 4) shows that the RHS model reproduces the kinetic data in both hard and soft ensembles rather well.

In conclusion, we mention that the prototypical na-

ture of our model implies that *passive collective behavior* should be a property common to general cross-linked actomyosin networks. We have shown that the degree of cooperativity in such networks can be strongly affected by elastic stiffness of the filaments. This suggests that a generic system of this type can be tuned to criticality by an actively generated prestress [21].

We thank D. Chapelle, J.-F. Joanny, K. Kruse, and V. Lombardi for insightful comments. M. Caruel thanks Monge PhD fellowship from Ecole Polytechnique for financial support.

* trusk@lms.polytechnique.fr

- [1] B. Alberts, A. Johnson, J. Lewis, M. Raff, K. Roberts, and P. Walter, *Molecular Biology of the Cell*, 5th ed. (Garland Science, New York, 2007); J. Howard, *Mechanics of Motor Proteins and the Cytoskeleton*, edited by Sinauer (Sinauer, Sunderland, MA, 2001).
- [2] A. F. Huxley and R. M. Simmons, *Nature* **233**, 533 (1971); L. E. Ford, A. F. Huxley, and R. M. Simmons, *J. Physiol.* **269**, 441 (1977); V. Lombardi, G. Piazzesi, and M. Linari, *Nature* **355**, 638 (1992); G. Piazzesi, F. Francini, M. Linari, and V. Lombardi, *J. Physiol.* **445**, 659 (1992); M. Linari, G. Piazzesi, and V. Lombardi, *Biophys. J.* **96**, 583 (2009).
- [3] Z. G. Nicolaou and A. E. Motter, *Nature Mater.* **11**, 608 (2012).
- [4] K. Kometai and H. Shimizu, *J. Stat. Phys.* **13**, 473 (1975); R. C. Desai and R. Zwanzig, *ibid.* **19**, 1 (1978); T. Dauxois, S. Lepri, and S. Ruffo, *Commun. Nonlinear Sci.* **8**, 375 (2003).
- [5] T. Erdmann and U. S. Schwarz, *Eur. Phys. J. E* **22**, 123 (2007).
- [6] P. Y. Plaçais, M. Bolland, T. Guérin, J. F. Joanny, and P. Martin, *Phys. Rev. Lett.* **103**, 158102 (2009); I. Pavlov, R. Novinger, and D. E. Rassier, *J. Biomech.* **42**, 2808 (2009); Y. Shimamoto, M. Suzuki, S. V. Mikhailenko, K. Yasuda, and S. Ishiwata, *Proc. Natl. Acad. Sci. U.S.A.* **106**, 11954 (2009); E. L. F. Holzbaur and Y. E. Goldman, *Curr. Opin. Cell Biol.* **22**, 4 (2010); S. Ishiwata, Y. Shimamoto, and N. Fukuda, *Prog. Biophys. Molec. Biol.* **105**, 187 (2011).
- [7] F. Jülicher and J. Prost, *Phys. Rev. Lett.* **75**, 2618 (1995); F. Jülicher, A. Ajdari, and J. Prost, *Rev. Mod. Phys.* **69**, 1269 (1997); T. Guerin, J. Prost, P. Martin, and J.-F. Joanny, *Curr. Opin. Cell Biol.* **22**, 14 (2010); T. Guerin, J. Prost, and J. F. Joanny, *Eur. Phys. J. E* **34**, 60 (2011).
- [8] T. Duke, *Proc. Natl. Acad. Sci. U.S.A.* **96**, 2770 (1999); *Philos. T. Roy. Soc. B* **355**, 529 (2000); D. Smith, M. Geeves, J. Sleep, and S. Mijailovich, *Ann. Biomed. Eng.* **36**, 1624 (2008); T. Erdmann and U. Schwarz, *Phys. Rev. Lett.* **108**, 188101 (2012).
- [9] C. F. Armstrong, A. F. Huxley, and F. J. Julian, *J. Physiol.* **186**, 26P (1966); K. A. P. Edman, **404**, 301 (1988); H. Granzier, A. Mattiazzi, and G. Pollack, *Am. J. Physiol.* **259**, C266 (1990); K. A. P. Edman and N. Curtin, *J. Physiol. - London* **534**, 553 (2001).
- [10] G. Piazzesi, L. Lucii, and V. Lombardi, *J. Physiol.* **545**, 145 (2002); M. Reconditi, M. Linari, L. Lucii, A. Stewart, Y. Sun, P. Boesecke, T. Narayanan, R. Fischetti, T. Irving, G. Piazzesi, M. Irving, and V. Lombardi, *Nature* **428**, 578 (2004); G. Piazzesi *et al.*, *Cell* **131**, 784 (2007).
- [11] A. Campa, T. Dauxois, and S. Ruffo, *Physics Reports* **480**, 57 (2009).
- [12] A. Campa, S. Ruffo, and H. Touchette, *Physica A* **385**, 233 (2007); R. S. Ellis, *J. Stat. Phys.* **101**, 999 (2000).
- [13] T. L. Hill, *Prog. Biophys. Molec. Biol.* **28**, 267 (1974); **29**, 105 (1976).
- [14] L. Marcucci and L. Truskinovsky, *Phys. Rev. E* **81**, 051915 (2010); *Eur. Phys. J. E* **32**, 411 (2010).
- [15] I. Telley, J. Denoth, E. Stussi, G. Pfützer, and R. Stehle, *Biophys. J.* **90**, 514 (2006); I. Pavlov, R. Novinger, and D. E. Rassier, *Am J Physiol-Cell Ph* **297**, C1211 (2009); T. Serizawa, T. Terui, T. Kagemoto, A. Mizuno, T. Shimozawa, F. Kobirumaki, S. Ishiwata, S. Kurihara, and N. Fukuda, **301**, C1116 (2011).
- [16] H. Huxley, A. Stewart, H. Sosa, and T. Irving, *Biophys. J.* **67**, 2411 (1994); K. Wakabayashi, Y. Sugimoto, H. Tanake, Y. Ueno, Y. Takezawa, and Y. Amemiya, **67**, 2422 (1994).
- [17] L. E. Ford, A. F. Huxley, and R. M. Simmons, *J. Physiol.* **311**, 219 (1981); S. Mijailovich, J. Fredberg, and J. Butler, *Biophys. J.* **71**, 1475 (1996); P.-G. de Gennes, *C.R. Acad. Sci. IV-Phys.* **2**, 1505 (2001).
- [18] J. Nagle, *Phys. Rev. A* **2**, 2124 (1970); M. Kardar, *Phys. Rev. B* **28**, 244 (1983).
- [19] A. Vilfan and E. Frey, *J. Phys.: Condens. Matter* **17**, S3901 (2005).
- [20] F. Bouchet, S. Gupta, and D. Mukamel, *Physica A* **389**, 4389 (2010); C. Nardini, S. Gupta, S. Ruffo, T. Dauxois, and F. Bouchet, *J. Stat. Mech.* **2012**, L01002 (2012).
- [21] M. Sheinman, C. P. Broedersz, and F. C. MacKintosh, *Phys. Rev. Lett.* **109**, 238101 (2012).