



HAL
open science

Sparse decomposition of audio signals on hybrid dictionaries using musical priors

Hélène Papadopoulos, Matthieu Kowalski

► **To cite this version:**

Hélène Papadopoulos, Matthieu Kowalski. Sparse decomposition of audio signals on hybrid dictionaries using musical priors. *Journal of the Acoustical Society of America*, 2013, 134 (1), pp.666-685. 10.1121/1.4807821 . hal-00823059v1

HAL Id: hal-00823059

<https://hal.science/hal-00823059v1>

Submitted on 16 May 2013 (v1), last revised 6 Oct 2013 (v2)

HAL is a multi-disciplinary open access archive for the deposit and dissemination of scientific research documents, whether they are published or not. The documents may come from teaching and research institutions in France or abroad, or from public or private research centers.

L'archive ouverte pluridisciplinaire **HAL**, est destinée au dépôt et à la diffusion de documents scientifiques de niveau recherche, publiés ou non, émanant des établissements d'enseignement et de recherche français ou étrangers, des laboratoires publics ou privés.

Sparse and structured decomposition of audio signals on hybrid dictionaries using musical priors

Hélène Papadopoulos^{a)} and Matthieu Kowalski
Laboratoire des Signaux et Systèmes
UMR 8506, CNRS-SUPELEC-Univ Paris-Sud
91172 Gif-sur-Yvette Cedex, France

(Dated: January 30, 2013)

This paper investigates the use of musical priors for sparse expansion of audio signals of music, on an overcomplete dual-resolution dictionary taken from the union of two orthonormal bases that can describe both transient and tonal components of a music audio signal. More specifically, chord and metrical structure information are used to build a structured model that takes into account dependencies between coefficients of the decomposition, both for the tonal and for the transient layer. The denoising task application is used to provide a proof of concept of the proposed musical priors. Several configurations of the model are analyzed. Evaluation on monophonic and complex polyphonic excerpts of real music signals shows that the proposed approach provides results whose quality measured by the signal-to-noise ratio is competitive with state-of-the-art approaches, and more coherent with the semantic content of the signal. A detailed analysis of the model in terms of sparsity and in terms of interpretability of the representation is also provided, and shows that the model is capable of giving a relevant and legible representation of Western tonal music audio signals.

PACS numbers: 43.75.Xz, 43.75.Zz, 43.60.Hj, 43.60.Pt

I. INTRODUCTION

We describe in this paper a novel approach for *structured sparse* decomposition of a music signal in an overcomplete time-frequency hybrid dictionary. Within a Bayesian framework, we propose to incorporate musical priors in order to build signal representations that take into account some “structural” information and that are more suitable to music than existing methods that are based on physical signal properties. For this, we take advantage of the recent work that have been done on chord estimation and beat tracking in the context of music content indexing. The model we propose is inspired from previously proposed Bayesian models for time-frequency inverse modeling of non-stationary signals (Wolfe *et al.*, 2004) or sparse linear regression in unions of bases (Févotte *et al.*, 2008), but presents an essential difference in the way dependencies between coefficients of the representation are modeled, using the newly introduced musical priors. One of the goal of this work is to show that ideas that have emerged in two related but distinct communities, *Sparsity* and *Music Information Retrieval*, can be exploited jointly to open new perspective for audio signal processing. Sparse representations have been used as a basis for extracting high-level information for MIR applications, such as note extraction in (Davies and Daudet, 2006), or beat tracking, chord recognition and musical genre classification in (Ravelli *et al.*, 2010). Our approach is somewhat different: we propose to incorporate music content information in order to build structured sparse representations that are tailored to the analyzed music signal and legible from a musical point of view.

A. Structured sparse representation

The problem of representing an audio signal using a time-frequency dictionary has been given a lot of attention these last few years. The specific problem we consider here is finding an approximation of a music audio signal as a linear combination of elementary waveforms (also called *atoms*) of a suitably chosen dictionary.

Musical signals are intrinsically structured. A particularity of musical signals is that, very often, several types of components are superimposed such as, among other features, tonal components (the partials of the notes, that are characterized by sinusoids with slowly varying amplitude and frequency) and transients (the attacks of the notes, that correspond to events well-localized in time). This is illustrated in Figure 1 that represents the spectrogram of a glockenspiel signal. The tonals appear as thin horizontal lines whereas the transients appear as sharp vertical lines. These various components may have significantly different behaviors in terms of time-frequency localization. For instance, fast varying transients require short analysis window length, whereas low varying tonals require long windows. Thus, they cannot be optimally represented within the same basis. The Balian-Low theorem (Low, 1985) states that redundancy is necessary for having well-localized functions both in time and frequency for transforms based on local Fourier analysis. This is why *hybrid* models, allowing a simultaneous representation of different components have been proposed (Hamdy *et al.*, 1996; Verma and Meng, 2000; Daudet and Torr sani, 2002; Molla and Torr sani, 2005). These models consider redundant (or overcomplete) dictionaries that are constructed by the concatenation of several families or bases (usually time-frequency atoms, such as Gabor atoms or local cosines; or time-scale atoms, such

^{a)} Author to whom correspondence should be addressed. Electronic mail: helene.papadopoulos@lss.supelec.fr.

1 as wavelets). Typically, the resulting dictionaries contain 38
 2 elements with various time-frequency characteristics and 39
 3 are more flexible than orthonormal bases (Chen *et al.*, 40
 4 1998).

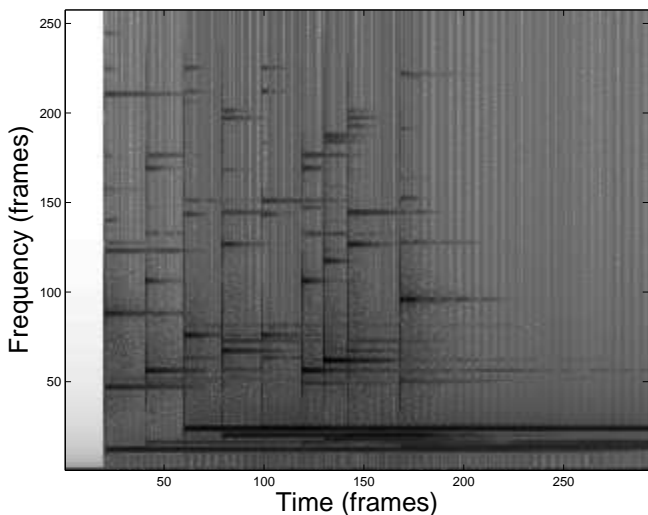


FIG. 1. Time-frequency representation of a recording of a glockenspiel excerpt. The vertical lines correspond to the attacks of the notes and the horizontal lines correspond to the partials.

5 Among the various existing transforms, lapped trans- 66
 6 forms such as the Modified Discrete Cosine Transform 67
 7 (MDCT) (Mallat, 1998; Malvar, 1990) is a standard 68
 8 choice for the bases (Févotte *et al.*, 2006; Kowalski and 69
 9 Torrèsani, 2008). This transform is very popular, in par- 70
 10 ticular in high quality audio coding and signal compression 71
 11 applications, because it allows an orthogonal time- 72
 12 frequency transform without blocking effects. Following 73
 13 these approaches, we consider in this work a dictionary 74
 14 built as the union of two MDCT bases with different 75
 15 time-frequency resolutions. The narrow band basis – 76
 16 with long time resolution – is used to estimate the tonal 77
 17 parts of the signal, and the wide band basis – with short 78
 18 time resolution – is used to estimate the transient parts. 79
 19 Such a dictionary is overcomplete since the number of el- 80
 20 ements of the dictionary is greater than the length of the 81
 21 signal. The expansion of the signal with respect to the 82
 22 dictionary is thus not unique. *Sparsity* may be used as a 83
 23 selection criterion for finding the expansion coefficients, 84
 24 in the sense that only a few coefficients of the decompo- 85
 25 sition of the signal on the bases are significantly nonzero. 86
 26 The signal can thus be well approximated by a limited 87
 27 number of coefficients. This problem is often referred to 88
 28 as *sparse regression*. Sparsity has become a fundamental 89
 29 concept in diverse areas of modern signal processing. It 90
 30 is, for instance, an essential ingredient of popular cod- 91
 31 ing standards such as the MPEG-1 layer III (“MP3”) or 92
 32 the MPEG-2 AAC. A review of sparse representations 93
 33 for musical signals and their applications can be found in 94
 34 (Daudet and Torrèsani, 2006; Plumbley *et al.*, 2010). 95

35 A common approach to find a sparse expansion of sig- 96
 36 nals in overcomplete dictionaries consists of minimizing 97
 37 the ℓ_1 norm of the expansion, and is known as *basis pur-* 98

suit (Chen *et al.*, 1998), or LASSO (Tibshirani, 1996). Other methods include variational approaches (Kowalski, 2009), probabilistic approaches (Kowalski and Torrèsani, 2008), greedy methods, such as the Matching Pursuit algorithm (Mallat and Zhang, 1993; Daudet, 2010) and its variants (the Orthogonal Matching Pursuit (Mallat, 1998; Pati *et al.*, 1993), the Molecular Matching Pursuit (Daudet, 2006b)), or Bayesian formulations as for instance EM-based algorithms (Figueiredo, 2003). In the framework of Bayesian variable selection, MCMC (Markov chain Monte Carlo) type approaches have been proposed (Févotte and Godsill, 2006; Févotte *et al.*, 2008). One of the main advantages of the MCMC techniques is their robustness because they scan the whole of the posterior distribution and thus are unlikely to fall into local minima. However, this is done at the expense of high computational cost.

The concept of *structured approximation* has been introduced from the observation that significant coefficients are not isolated but tend to form “clusters” in the index space. As mentioned above, audio music signals are well-structured. In the time-frequency plane, the partials of the notes will generate horizontal lines localized in frequency, whereas the attacks of the notes and the percussive sounds will generate vertical lines localized in time. Ideally, this structure should be reflected in the signal decomposition, so that the coefficients have physical interpretability and are more meaningful than isolated coefficients from an analysis perspective. **Interpretability is a key concept in sparsity¹. A signal representation where coefficients can be explained from a theoretical or a physical point of view can help assessing the model accuracy, and provides a suitable representation for higher-level tasks. For instance in music signal analysis, a time-frequency representation where coefficients can be physically interpretable as being part of the tonal layer may be very useful to the multi-f0 estimation task (Yeh *et al.*, 2010).** This is why we are interested in finding a signal approximation that is not only sparse, but also *structured*, by considering dependencies between significant coefficients. Previous approaches that use unstructured priors, such as Bernoulli models have shown that they generate isolated coefficients with high amplitude in both bases (Févotte and Godsill, 2006; Kowalski and Torrèsani, 2008). These components do not have any physical or musical meaning and are usually perceived as “musical artifacts” or “musical noise” in the reconstructed signal. Considering dependencies between atoms coefficients and using structured priors allows reducing the number of such undesirable components. Various approaches have been proposed for introducing dependencies between coefficients in the time-frequency domain. These approaches aim at exploiting the fact that significant coefficients tend to be organized into clusters, which results from persistence properties of time-frequency representations. Structures can be modeled directly in the coefficients themselves, such as in (Kowalski, 2009). However, dependencies are often introduced in the time-frequency indices, rather than directly in the coefficients. This results into hierarchical models in which both the coefficients and the addresses of the significant

2 Among existing approaches, physical properties result- 60
 3 ing in persistency over frequency of the transient layer 61
 4 can be modeled using structured hierarchical Bernoulli 62
 5 models on a dictionary built as the union of two MDCT 63
 6 bases with different time-frequency resolutions (Kowal- 64
 7 ski and Torr sani, 2008), binary Markov trees (Crouse 65
 8 *et al.*, 1998; Molla and Torr sani, 2005), or dyadic trees of 66
 9 wavelet coefficients used with wavelet bases (Daudet and 67
 10 Torr sani, 2002); persistency of the tonal layer can be 68
 11 favored using Markov chains, as proposed in (Molla and 69
 12 Torr sani, 2005) in the case of a MDCT base; in (F votte 70
 13 *et al.*, 2008), structural constraints on the coefficients 71
 14 that rely on physical properties of the signal are imposed 72
 15 for both layers. Persistencies of time-frequency coeffi- 73
 16 cients of musical signal are modeled using two types of 74
 17 Markov chains. It results in a “horizontal structure” for 75
 18 the tonal layer and a “vertical structure” for the transient 76
 19 layer. 77

20 Enforcing structure between expansion coefficients can 78
 21 be managed using sequential approaches (Daudet and 79
 22 Torr sani, 2002; Daudet, 2004; Molla and Torr sani, 2005) 80
 23 that first identify the tonal layer using the first basis, and 81
 24 then estimate the transient components from the resid- 82
 25 ual, using the second basis. In (Daudet and Torr sani, 83
 26 2002; Daudet, 2004), tonal and transient components 84
 27 are expanded sequentially into local cosine and dyadic 85
 28 wavelets bases respectively. The method does not rely 86
 29 on any prior segmentation of the signal. For each layer, 87
 30 only the largest coefficients in each time frame are re- 88
 31 tained based on threshold values that are estimated adap- 89
 32 tively in a quantization stage. In the framework of audio 90
 33 coding, (Molla and Torr sani, 2005) describes an hybrid 91
 34 model for the expansion of audio signals considering a 92
 35 redundant dictionary made out of the union of local co- 93
 36 sine and wavelet bases. A recursive scheme is proposed 94
 37 to estimate the two layers, that relies on the assumption 95
 38 that the cardinalities of the significance maps have to be 96
 39 known. A priori estimates for the relative sizes of the 97
 40 tonal and transient layers are obtained based on an algo- 98
 41 rithm that determines local transientness of audio signals 99
 42 (Molla and Torr sani, 2004). The approach is used to de- 100
 43 velop an hybrid audio coder that does not rely on prior 101
 44 (time) segmentation of the signal. 102

45 As stressed in (Daudet, 2006a), sequential approaches 103
 46 suffer from two limitations. First, errors in a step are 104
 47 systematically propagated into the next estimation stage 105
 48 and thus bias the estimates of the other components. 106
 49 Second, the choice of a threshold that allows discrimi- 107
 50 nating large significant from small residual coefficients 108
 51 is difficult. An alternative to sequential approaches is 109
 52 the simultaneous approach of both layers, as proposed in 110
 53 (F votte *et al.*, 2008). 111

54 Starting from this approach, we build a structured 112
 55 model for sparse signal decomposition within a Bayesian 113
 56 framework. The originality of our work is that we model 114
 57 dependencies between the expansion coefficients by using 115
 58 priors that are based on musical information. 116

Up to now, additional structure constraints that have been added rely on physical properties of the signal. The recent advances in automatic extraction of content information from audio music signals in the field of Music Information Retrieval (MIR) offers an interesting alternative. Content-based music information retrieval deals with the extraction and processing of meaningful information from musical audio. Techniques developed for searching, retrieving, organizing and interacting in a personalized way with large databases of music signals are often based on the use of musical descriptors that are extracted from the signal, such as the key, the chord progression, the melody or the instrumentation. Musical content information can be used to build structured priors that reflect the content of the signal. For instance, as we propose in this paper, the chord progression provides information about the notes that are present in the signal and can be used to build a prior for the tonal layer. Similarly, the position of the beats is related to the transients and can be used to build a prior for the transient layer. These concepts are introduced in what follows.

1. Chord estimation

The chord progression of a piece of music is a very important descriptor because it characterizes its harmonic structure. Here, we want to work directly on audio. The symbolic transcription (the score) of a piece of music is not always available, especially in music genres such as jazz music where there is a large part devoted to improvisation. In addition, algorithms that extract a transcription from an audio signal, such as multi-f0 estimation algorithms (Yeh *et al.*, 2010), are still limited and costly. However, numbers of recent work have shown that it is possible to accurately extract a robust representation of the harmonic content without the use of transcription algorithms. Estimating the chord progression of an audio signal has thus become a very popular task in MIR (Sheh and Ellis, 2003; Bello and Pickens, 2005; Harte and Sandler, 2005; Papadopoulos and Peeters, 2011).

The output of a chord estimation algorithm consists in a progression of chords chosen among a given chord lexicon, that is very often limited to the 24 major and minor triads. Chord estimation on real signals has been favored by the use of the *chroma* features (Wakefield, 1999) or Pitch Class Profiles (Fujishima, 1999), which are traditionally 12-dimensional vectors, with each dimension corresponding to the intensity associated with one of the 12 semitone pitch classes (chroma) of the Western tonal music scale, regardless of octave. The temporal sequence of chroma vectors over time is known as *chromagram*. Conceptually, the chromagram is a frequency spectrum folded into a single octave. Pooling the spectrum into twelve bins that correspond to the twelve pitch classes of the equal-tempered scale results in a signal representation that allows identifying pitches by an octave. Each chord may be characterized by the semitone pitch classes

1 or chroma that correspond to the notes it is composed 56
2 of. The use of such a mid-level representation overcomes 57
3 the problem of automatic transcription. 58

4 Various approaches for chroma computation exist. Al- 59
5 though they present some variances in the implementa- 60
6 tion, they follow in general the same guideline that con- 61
7 sists of two main steps: 62

- 8 1. First, a semitone pitch class spectrum (SPS), that 64
9 is a log-frequency representation of the spectral 65
10 content of the music audio signal, is constructed. 66
11 It is expressed in a MIDI-note scale and is in gen- 67
12 eral either computed from the Fourier transform or 68
13 from the constant-Q transform (Brown, 1991). 69
- 14 2. Secondly, the semitone pitch spectrum is mapped 71
15 to the chroma vectors. For this, the semitones in 72
16 octave distance are added up to pitch classes. 73

17 The chromagram computation may include some other 74
18 steps such as a pre-processing step that separates har- 75
19 monic and noise components, a filtering step that 76
20 smoothes the chromagram or a post-processing normal- 77
21 ization step that makes the chromagram invariant to dy- 78
22 namics.

23 We rely in this paper on a chromagram computation 79
24 method, described in (Papadopoulos and Peeters, 2011), 80
25 that is based on a constant-Q transform applied on a 81
26 downsampled signal.

27 For chord estimation, we rely on the model proposed in 82
28 (Papadopoulos and Peeters, 2007, 2011), that is based on 83
29 chord templates and hidden Markov models. We briefly 84
30 described here the concepts that are used in the rest of 85
31 the paper. The front-end of our model is based on the 86
32 extraction of a chromagram that represents the audio 87
33 signal. The chord progression is then modeled as an 88
34 ergodic 24-states HMM, each hidden state correspond- 89
35 ing a chord of a the chord lexicon (CM, . . . , BM, Cm, 90
36 . . . , Bm), and the observations being the chroma vec- 91
37 tors. The observation chord symbol probabilities are ob- 92
38 tained by computing the correlation between the obser- 93
39 vation vectors (the chroma vectors) and a set of chord 94
40 templates which are the theoretical chroma vectors corre- 95
41 sponding to the $I = 24$ major and minor triads. A state- 96
42 transition matrix based on musical knowledge (Noland 97
43 and M., 2006) is used to model the rules from which 98
44 the transitions between chords result. The chord pro- 99
45 gression over time is estimated in a maximum likelihood 100
46 sense by decoding the underlying sequence of hidden 101
47 chords $S = (s_1, s_2, \dots, s_N)$ from the sequence of observed 102
48 chroma vectors using the Viterbi decoding algorithm. 103

49 2. Beat tracking 104

50 Beat tracking is a challenging problem that has been 108
51 addressed in a large number of works because beat in- 109
52 formation is used in many applications in music signal 110
53 processing, such as music analysis, score alignment or 111
54 cover version identification. Numerous good overviews 112
55 on the problem of beat tracking are available, such as 113

for instance (Dixon, 2007; Scheirer, 1998; Klapuri *et al.*, 2006; Davies and Plumbley, 2007). In the present work, we use the beat tracker proposed in (Peeters and Papadopoulos, 2011) as a front end of the system. Briefly, this approach aims at simultaneously estimating beat locations with downbeat locations from an audio file. A probabilistic framework in which the time of the beats and their associated beat-positions-inside-a-measure role, hence the downbeats, are considered as hidden states and are estimated simultaneously using signal observations. For this, a reverse Viterbi algorithm that decodes hidden states over beat-numbers is proposed. A beat-template is used to derive the beat observation probabilities. A machine-learning method, the Linear Discriminant Analysis, allows estimating the most discriminative beat-templates. Two kinds of observations are proposed to derive the beat-position-inside-a-measure observation probability: the variation over time of chroma vectors and the spectral balance. This methods was ranked first for the McKinney Collection test-set during the MIREX 2009 beat tracking contest. We refer the reader to (Peeters and Papadopoulos, 2011) for more details.

52 C. Contributions 105

53 Sparse representations of signals have recently proved 106
54 to be useful for a wide range of applications in signal 107
55 processing, such as denoising (Févotte *et al.*, 2006), cod- 108
56 ing and compression (Daudet *et al.*, 2004; Ravelli *et al.*, 2008), source separation (Benaroya *et al.*, 2006; Févotte and Godsill, 2006) or music transcription (Blumensath and Davies, 2004). Here, we focus on the task of denoising an excerpt of musical audio. The approach we propose is in many respects related to previously proposed MCMC schemes for nonlinear approximation in hybrid dictionaries of waveforms. However, a main difference is that we aim at providing a multilayered signal decomposition that fits the music signal, in which the layers can well explain the signal and reflect its music content and can provide more relevant semantic information. By incorporating musical priors, we built a model that is particularly well adapted to music and fits the intrinsic nature of Western tonal music. **The denosing application is used as a proof of concept for the description of new musical priors introduced in the paper, and we thus focus on assessing the relevance of the new priors rather than demonstrating the superiority of the method in terms of denoising results (although it is competitive with respect to signal to noise ratio to the state-of-the-art). In this context, we systematically compare our model, in which structural constraints on the coefficients are based on musical prior, to the model proposed (Févotte *et al.*, 2008), and in which structural constraints on the coefficients rely on physical properties of the signal are imposed for both layers, reaching the state-of-the-art in terms of SNR results.**

56 Preliminary results of the proposed approach can be 109
57 found in (Papadopoulos and Kowalski, 2011). In this ar- 110
58 ticle, we propose significant improvements to the signal 111

1 model, in particular by presenting a structured model for
 2 the transient layer; we include the result of new experi-
 3 ments; finally we present a detailed analysis of the model
 4 and case-study examples.

5 The remainder of this paper is structured as follows. In
 6 Section II, we present our model for sparse signal decom-
 7 position on hybrid dictionaries that incorporates musical
 8 priors; our main contribution is described in part II.C
 9 where we specify our formulation of prior dependence
 10 structures in the time-frequency plane. We briefly ad-
 11 dress the problem of parameters estimation in Section III.
 12 In Sections IV and V, we present and discuss the simula-
 13 tion results of our model. Conclusions and perspectives
 14 for future work are given in Section VI.

15 II. SIGNAL MODEL

16 This section introduces first the mathematical model
 17 used to represent the audio signal, and then defines the
 18 priors chosen in a Bayesian context. Particularly, the
 19 new musical priors based on the *chromagram* and the
 20 beat locations are exposed in Section II.C.

21 A. Model

22 In this part, we describe our model for signal decom-
 23 position with sparse constraint on a *hybrid* dictionary
 24 of elementary waveforms (Daudet and Torr sani, 2002).
 25 The dictionary is constructed as the union of two or-
 26 thogonal bases with different time-frequency resolution
 27 that account respectively for the tonal and the transient
 28 parts of the signal. We consider a tree-layer signal model
 29 of the form:

$$30 \quad \text{signal} = \text{tonals} + \text{transients} + \text{residual} .$$

31 Let $V = \{v_n, n = 1, \dots, N\}$ and $U = \{u_m, m =$
 32 $1, \dots, N\}$ be two MDCT bases of \mathbb{R}^N with respectively
 33 long frame ℓ_{ton} to achieve good frequency resolution for
 34 tonals and short frame ℓ_{tran} to achieve good time res-
 35 olution for transients. The MDCT is a bijective linear
 36 transform and we note $n_{ton} = \frac{N}{\ell_{ton}}$ and $n_{tran} = \frac{N}{\ell_{tran}}$ the
 37 number of frames for each basis (see Figure 2). Here,
 38 n and m are time-frequency indexes and will be de-
 39 noted in the following $n = (q, \nu) \in [1, n_{ton}] \times [1, \ell_{ton}]$
 40 or $m = (q, \nu) \in [1, n_{tran}] \times [1, \ell_{tran}]$.

41 The signal is decomposed as a linear combination of
 42 atoms of the two basis V and U that account for the
 43 tonal and transient layers plus a residual part that ac-
 44 counts for the noise and that is not sparse with respect
 45 to the two considered bases. We denote $D = V \cup U$ the
 46 dictionary made as the union of these two bases. D is
 47 overcomplete in \mathbb{R}^N , and any $x \in \mathbb{R}^N$ admits infinitely
 48 many expansions in the form:

$$49 \quad x = \sum_{n \in I} \alpha_n v_n + \sum_{m \in I} \beta_m u_m + r , \quad (1)$$

50 where $I = \{1, \dots, N\}$, α_n and β_m are the expansion co-
 51 efficients and r represents the noise term.

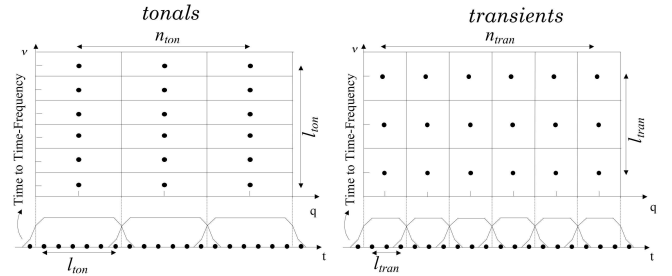


FIG. 2. Illustration of the two MDCT bases that account for the tonal part (long time resolution) and the transient part (short time resolution) of the signal.

We are interested in sparse signals, i.e. signals that may be written as:

$$x = \sum_{\lambda \in \Lambda} \alpha_\lambda v_\lambda + \sum_{\delta \in \Delta} \beta_\delta u_\delta + r , \quad (2)$$

51 where Λ and Δ are small subsets of the index set $I =$
 52 $\{1, \dots, N\}$ that account for the significant coefficients,
 53 i.e they identify which coefficient of the expansion are
 54 significantly non-zero. In what follows, they will be re-
 55 ferred to as *significance maps*.

In order to model sparseness in the time-frequency co-
 efficients, we introduce two indicator random variables
 corresponding to the significance maps Λ and Δ , $\gamma_{ton,n}$
 and $\gamma_{tran,m} \in \{0, 1\}$ that control the sparsity of the ex-
 pansion:

$$\gamma_{ton,n} = \begin{cases} 1 & \text{if } n \in \Lambda \\ 0 & \text{otherwise} \end{cases} \quad \gamma_{tran,m} = \begin{cases} 1 & \text{if } m \in \Delta \\ 0 & \text{otherwise} \end{cases} . \quad (3)$$

We can therefore rewrite Eq. (2) as:

$$x = \sum_{n \in I} \gamma_{ton,n} \alpha_n v_n + \sum_{m \in I} \gamma_{tran,m} \beta_m u_m + r . \quad (4)$$

The hybrid model is defined by two components: a discrete probability model for the significance maps, and a probability model for the expansion coefficients conditional upon the significance maps. Both of them are described below.

66 B. Coefficient priors

67 The sparseness of the expansion is conceptualized in
 68 a hierarchical manner as it is not directly modeled in
 69 the coefficients but through the binary indicator random
 70 variables $\gamma_{ton,n}$ and $\gamma_{tran,m}$ that are attached to each
 71 coefficient. As a result, hierarchical priors are given to
 72 the coefficients. We assume that, conditional upon the
 73 significance maps Λ and Δ , the coefficients α_n and β_m

are independent zero-mean normal random variables:

$$\begin{aligned}
 p(\alpha_n | \gamma_{ton,n}, \sigma_{ton,n}) &= (1 - \gamma_{ton,n}) \delta_0(\alpha_n) + \gamma_{ton,n} \mathcal{N}(\alpha_n | 0, \sigma_{ton,n}^2) \\
 p(\beta_m | \gamma_{tran,m}, \sigma_{tran,m}) &= (1 - \gamma_{tran,m}) \delta_0(\beta_m) + \gamma_{tran,m} \mathcal{N}(\beta_m | 0, \sigma_{tran,m}^2),
 \end{aligned} \tag{5}$$

where δ_0 is the Dirac delta distribution and, following (Wolfe *et al.*, 2004; Févotte *et al.*, 2008), the variances $\sigma_{ton,n}$ and $\sigma_{tran,m}$ are given an inverse-Gamma conjugate prior distribution:

$$\begin{aligned}
 p(\sigma_{ton,n}^2 | \gamma_{ton,n} = 1, f_{ton,n}) &= \mathcal{IG}(\sigma_{ton,n}^2 | 1, f_{ton,n}) \\
 p(\sigma_{tran,m}^2 | \gamma_{tran,m} = 1, f_{tran,m}) &= \mathcal{IG}(\sigma_{tran,m}^2 | 1, f_{tran,m}),
 \end{aligned} \tag{6}$$

where the scale parameters $f_{ton,n}$ and $f_{tran,m}$ are parametric frequency profiles that aim at taking into account the decrease of the energy of the signal when the frequency increases (Févotte *et al.*, 2008, Eq. (8)):

$$f_{ton,n} = \frac{\lambda_{ton}}{1 + \left(\frac{q-1}{\ell_{ton}/3}\right)} \quad f_{tran,m} = \frac{\lambda_{tran}}{1 + \left(\frac{q-1}{\ell_{tran}/3}\right)}. \tag{7}$$

The parameters λ_{ton} and λ_{tran} are given a non-informative *Gamma* conjugate prior.

Sparsity is enforced when $\gamma_{ton,n} = 0$ (resp. $\gamma_{tran,m} = 0$). In this case, the coefficients α_n (resp. β_m) are set to zero.

C. Indicator variable priors

In order to enforce structure between expansion coefficients, the significance maps Λ and Δ are given structured priors. We design priors that are tailored to the music signal. The one corresponding to the tonal basis encodes musical information based on harmonic content information using a chord transcription of the analyzed excerpt. The one corresponding to the transient basis is based on metrical content information using the sequence of beats corresponding to the analyzed excerpt.

To show the relevance of the proposed priors, the proposed approach will be systematically compared with a closely related state-of-the-art approach described in Section II.C.3.

In what follows, some results will be illustrated through the representation of the significance maps that are defined by the two binary indicator random variables $\gamma_{ton,n}$ and $\gamma_{tran,m}$. In Figure 2, the MDCT bases are illustrated by a tiling of the time-frequency plane, where each tile represents a particular atom. The significance maps in the time-frequency plane are represented through the binary indicator random variable γ . To each atom corresponds an indicator variable that controls whether this atom is selected ($\gamma = 1$) or not ($\gamma = 0$).

1. Model for tonals

For the significance map corresponding to the tonals, we propose to model dependencies between indicator variables using information about the harmonic content of the audio signal. Ideally, we would assume that we know the score corresponding to the musical excerpt and that, for each time frame $q \in \{1, \dots, n_{ton}\}$, we know which notes the signal is composed of.

However, here, we want to work directly on audio, for which an exact transcription is usually not available. A number of recent work have shown that it is possible to accurately extract robust mid-level representation of the music, such as the chord progression (Papadopoulos and Peeters, 2011), that characterizes its harmonic content.

We propose to give a musical prior to the indicator variables using musical information obtained from a chord progression estimated from the audio file. The output of a chord estimation algorithm consists in a progression of chords chosen among a given chord lexicon that, in general, does not distinguish between any possible combination of simultaneous notes, but is typically reduced to a set of chords of 3 or 4 notes. The number of notes composing the chords will be denoted by N_c in the following. Here, we limit our chord lexicon to the 24 major and minor triads ($N_c = 3$). The method we propose could be extended to larger dictionaries.

Each chord is characterized by a set of semitone pitch classes or chroma that correspond to the notes it is composed of. The chord progression does not provide an exact transcription of the music. For instance, passing notes are in general ignored, missing notes in the harmony may be added. Moreover, the chords are estimated regardless of octave. However, experiments show that the provided music content information is sufficient enough to build musically meaningful priors.

We consider two methods for building the structured significance maps for the tonal layer. In the first case, denoted as *Method Chord*, we use chord information. In the second case, denoted as *Method Chroma*, the priors are built relying directly on chromagram information.

a. Mapping between MDCT bins and chroma: In order to select atoms of the MDCT base that correspond to the harmonic content of the signal, we first perform a mapping between the MDCT bins and the 12 semitone pitch classes. Given a fixed frame index q , let $\{p_\nu^{MDCT}\}_{\nu=1, \dots, \ell_{ton}}$ denote the semitone pitch classes corresponding to each frequency MDCT bin.

Assuming a perfect tuning of $A = 440\text{Hz}$, a MDCT bin of frequency ν is converted to a chroma p_ν^{MDCT} by the following equation:

$$p_\nu^{MDCT} = (12 \log_2 \frac{\nu}{440} + 69) \pmod{12}^3. \tag{8}$$

Note that, a single semitone pitch-class corresponds to several consecutive bins of the MDCT. Because of the logarithmic scale of Western tonal music, the higher the frequency, the larger the number of MDCT bins correspond to a single pitch class.

1 *b. Method Chords:* Given a fixed frame index q ,³³
 2 let $\{p_k^{chord}\}_{k=1,\dots,N_c}$ denote the semitone pitch-classes
 3 (chroma) corresponding to the estimated chord c_q . All
 4 bins of the MDCT that correspond to a note belonging to
 5 the estimated chord are selected. The indicator variables
 6 $\{\gamma_{ton,(q,\nu)}\}_{\nu=1,\dots,\ell_{ton}}$ are given the following membership
 7 probabilities:

$$P_{\Lambda}\{\gamma_{ton,(q,\nu)} = 1\} \quad (9)$$

$$= \begin{cases} p_{ton} & \text{if } \exists k \in [1, N_c] \mid p_{\nu}^{MDCT} = p_k^{chord} \\ 1 - p_{ton} & \text{otherwise,} \end{cases}$$

8 where $0 \leq p_{ton} \leq 1$. The significance maps corresponding
 9 to the tonal layer should reflect the harmonic content of
 10 the audio signal. In practice, the value p_{ton} will be close
 11 to 1 (in our experiments, $p_{ton} = 0.9$) so that atoms cor-
 12 responding to the notes that are played are given high
 13 prior. The significant map for the tonal layer corre-
 14 sponding to the *Glockenspiel* monophonic audio signal of
 15 our test-set is illustrated in Figure 3. A set of atoms
 16 is selected at each frame according to the notes of the
 17 (note) transcription, regardless of octave. For instance
 18 all atoms $\{B1, B2, \dots\}$ corresponding to the semitone B
 19 are selected when the first B note of the *Glockenspiel* is
 20 sounded.

21 The significance maps are given structures of “tubes”
 22 that have a musical meaning. Note also that we provide
 23 here a “vertical structure” for tonals.

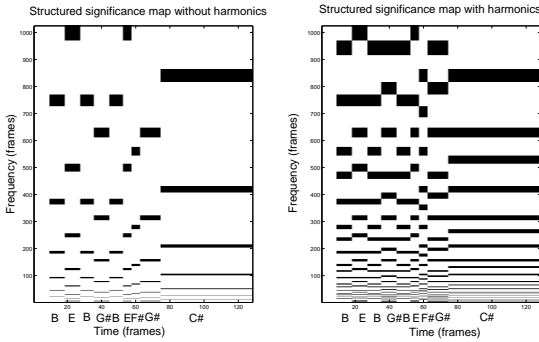


FIG. 3. Structured significance map for tonals for a *Glockenspiel* excerpt using chord information. Left: only notes composing the chords are considered. Right: higher harmonics are considered. The note transcription is indicated in the bottom.

24 *c. Method Chroma:* Given a fixed frame index q ,⁴²
 25 let $\{a_k\}_{k=1,\dots,12}$ denote the amplitude of each bin⁴³
 26 $\{p_k^{chroma}\}_{k=1,\dots,12}$ of the computed chroma vector. Note⁴⁴
 27 that, according to (Papadopoulos and Peeters, 2011), the⁴⁵
 28 chromagram has been normalized so that $\sum_{k=1}^{12} a_k = 1$. For⁴⁶
 29 each chroma bin, all MDCT bins that correspond to this⁴⁸
 30 chroma are selected and given a weighted contribution⁴⁹
 31 according to the amplitude in the chroma vector. The⁵⁰
 32 indicator variables $\{\gamma_{ton,(q,\nu)}\}_{\nu=1,\dots,\ell_{ton}}$ are given the fol-⁵¹

lowing membership probabilities:

$$P_{\Lambda}\{\gamma_{ton,(q,\nu)} = 1\} \quad (10)$$

$$= a_k \text{ if } \exists k \in [1, 12] \mid p_{\nu}^{MDCT} = p_k^{chroma} .$$

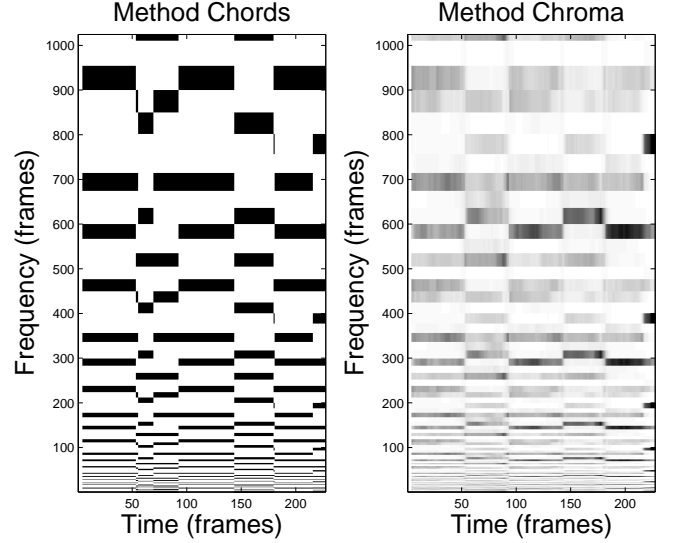


FIG. 4. Structured significance map for tonals for a *Beethoven String Quartet Op.127* excerpt using chroma information.

34 Figure 4 shows the significant maps for the tonal layer
 35 corresponding to the *Beethoven String Quartet Op.127*
 36 audio signal of our test-set obtained with *Method Chord*
 37 [left] and *Method Chroma* [right].

38 Two additional components may be added to improve
 39 the model.

d. Tuning: The instruments may have been tuned ac-
 cording to a reference pitch different from the standard
 $A4 = 440\text{Hz}$. In this case it is necessary to estimate the
 tuning of the track and Eq. (8) becomes:

$$p_{\nu}^{MDCT} = (12 \log_2 \frac{\nu}{A_{est}} + 69) \pmod{12} , \quad (11)$$

40 where A_{est} denotes the estimated tuning, here obtained
 41 with the method proposed in (Peeters, 2006).

e. Harmonics: Higher harmonics may be considered in
 the model. **Each note produces a set of harmonics, whose
 frequencies are whole number multiples of the fundamen-
 tal frequency⁴, that results in a mixture of non-zero val-
 ues in the chroma vector corresponding to the chord. For
 instance a C1 note will produce the set of harmonics
 $\{C1 - C2 - G2 - C3 - E3 - G3 - \dots\}$. They can be
 considered in the significance maps, as illustrated in the
 right part of Figure 3. Here we take into account the first
 6 harmonics of the notes⁵.**

2. Model for transients

For the significance map corresponding to the transients, we propose to model dependencies between indicator variables using information about the metrical structure of the audio signal. The idea is that, in a piece of music, most of the transient sounds will occur on beats or beat subdivisions. For instance, drum sounds are generally used to underline the metrical structure (beats, downbeats); in a string quartet piece, bow changes will generally occur on note changes, which are related to the metrical structure.

The structured prior corresponding to the significance map for tonals is built as follows. **The beat positions are estimated from the signal using the beat tracker proposed in (Peeters and Papadopoulos, 2011), described in Section I.B.2.** Let $\{b_k\}_{k=1,\dots,N_b}$ denote the N_b beat positions (in frames) of the track (subdivisions of beats such as quarter notes or eighth notes can be considered as well). The indicator variables $\{\gamma_{tran,(q,\nu)}\}_{\nu=1,\dots,\ell_{tran}}$ are given the following membership probabilities:

$$\begin{aligned} \forall \nu = 1, \dots, \ell_{tran} \quad P_{\Delta}\{\gamma_{tran,(q,\nu)} = 1\} & \quad (12) \\ & = \begin{cases} p_{tran} & \text{if } \exists k \in [1, N_b] \mid q = k \\ 1 - p_{tran} & \text{otherwise,} \end{cases} \end{aligned}$$

where $0 \leq p_{tran} \leq 1$. The significance maps corresponding to the transient layer should reflect the metrical content of the audio signal. In practice, the value p_{tran} will be close to 1 (in our experiments, $p_{tran} = 0.9$) so that atoms corresponding to beat locations are given high prior. The significant map for the transient layer corresponding to the *Glockenspiel* audio signal of our test-set is illustrated in Figure 5. For each beat location, all frequency bins are retained, resulting in vertical lines that are sparse in time but cover all the frequencies, in the significance map. It may be noticed that the duration between two consecutive lines is not constant, as there may be variations in the tempo.

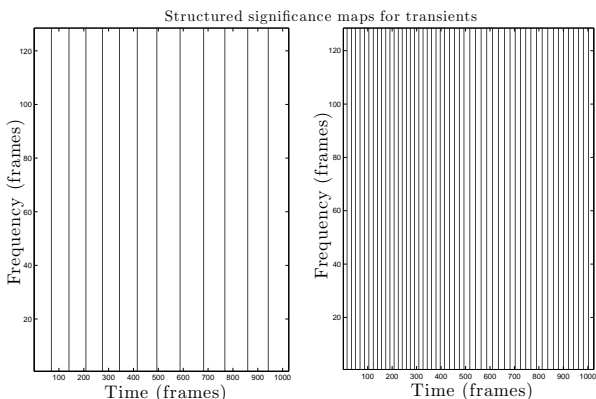


FIG. 5. Structured significance map for transients for a *Glockenspiel* excerpt using beat location information, resulting in vertical lines in the time-frequency plane. Left: considering beat locations. Right: considering eight-notes locations.

Remark 1 As underlined in (Kowalski and Torr sani, 2008; F votte et al., 2008), the window lengths for each layer must be significantly different enough to discriminate between tonals and transients. Better results are obtained using a very short window length for the transients ($\approx 3ms$) that is shorter than the duration of a short attack. In this case, several frames may be needed to describe a transient. In practice, we also select vertical lines surrounding the theoretical (or estimated) beat locations in the transient layer prior. Eq. (12) thus becomes:

$$\begin{aligned} \forall \nu = 1, \dots, \ell_{tran} \quad P_{\Delta}\{\gamma_{tran,(q,\nu)} = 1\} & \quad (13) \\ & = \begin{cases} p_{tran} & \text{if } \exists k \in [1, N_b] \mid q = k \\ p_{tran} & \text{if } \exists k \in [1, N_b] \mid q = k - 1 \\ p_{tran} & \text{if } \exists k \in [1, N_b] \mid q = k + 1 \\ 1 - p_{tran} & \text{otherwise.} \end{cases} \end{aligned}$$

3. Baseline approach for comparison

In this article, we compare our approach, in which structural constraints on the coefficients are based on musical prior, to the baseline model (F votte et al., 2008), in which structural constraints on the coefficients relying on physical properties of the signal are imposed for both layers. Structure between significant coefficients of the decomposition is introduced to model persistence properties of time-frequency representations of audio signals, so that a horizontal prior structure is given to the indicator variables corresponding to the tonal layer, while vertical prior structure is given to the indicator variables corresponding to the transient layer.

For the tonal layer, persistency in time of the time-frequency coefficients is modeled. Given a fixed frequency index ν , the sequence $\{\gamma_{ton,(q,\nu)}\}_{q=1,\dots,n_{ton}}$ is modeled by a two-state first-order Markov chain with transition probabilities $P_{ton,00}$ and $P_{ton,11}$, assumed equal for all frequency indices and initial distribution π_{ton} of each chain taken to be its stationary distribution.

For the transient layer, persistency in frequency of the time-frequency coefficients is modeled. Given a fixed frame index q , the sequence $\{\gamma_{tran,(q,\nu)}\}_{\nu=1,\dots,\ell_{tran}}$ is modeled by a two-state first-order Markov chain with probabilities $P_{tran,00}$ and $P_{tran,11}$, assumed equal for all frames, and with learned initial probability π_{tran} .

The tonal and transient models are illustrated in Figure 6. We refer the reader to (F votte et al., 2008) for more details.

D. Residual

The residual signal r is modeled as an independent, identically distributed (i.i.d) Gaussian white noise, with variance σ^2 , which is given an inverse-Gamma conjugate prior⁶.

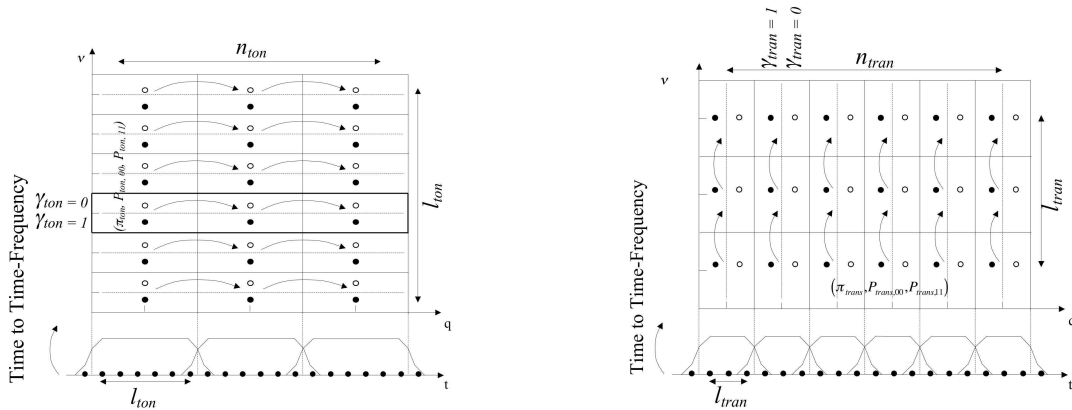


FIG. 6. Structured horizontal model for tonals and vertical model for transients based on time-frequency persistency properties. Adapted from (Févotte *et al.*, 2008).

III. MCMC INFERENCE

In the spirit of some previous work on Bayesian variable selection (Geweke, 1996; George and McCulloch, 1997), and following (Wolfe *et al.*, 2004; Févotte *et al.*, 2008), the posterior distribution of the set of parameters and hyperparameters of the model, denoted by $\theta = \{\alpha, \beta, \sigma_{ton}, \sigma_{tran}, \nu_{ton}, \nu_{tran}\} \cup \sigma$, is sampled from using a Gibbs sampler (Geman and Geman, 1984; Casella and George, 1992). Gibbs sampler is a standard Markov Chain Monte Carlo (MCMC) technique that simply requires to iteratively sample from the posterior distribution of each parameter, conditionally upon the data x and the remaining parameters.

The MCMC inference scheme we use is similar to the one described in (Wolfe *et al.*, 2004; Févotte and Godsill, 2006; Févotte *et al.*, 2008), the main difference being the new musical priors considered for the indicator variables we have introduced in Section II.C. For the sake of completeness, we provide in this section its general outline, using the notations we adopted in this paper. Further details about derivation of the expression for the update steps of the parameters, can be found in (Geweke, 1996; George and McCulloch, 1997; Wolfe *et al.*, 2004; Févotte *et al.*, 2008).

Let θ_{-k} denote the set of parameters in θ except the parameter k . Using Bayes'rule, the conditional distribution of each parameter k conditional upon the other parameters and the data can be written as:

$$p(k|\theta_{-k}, x) \propto p(x|\theta)p(\theta). \quad (14)$$

The conditional distributions are thus proportional to the likelihood of the data times the priors on the parameters.

In order to avoid a nonconvergent Markov chain in the Gibbs sampler, (γ_{ton}, α) and (γ_{tran}, β) need to be sampled jointly (Geweke, 1996). As pointed out in (Févotte *et al.*, 2008), the structure of the dictionary $D = [VU]$ and the gaussian noise assumption allows alternative

block sampling of (γ_{ton}, α) and (γ_{tran}, β) , with the benefit of avoiding any matrix inversion at each iteration of the Gibbs sampler. Indeed, with the gaussian noise assumption, the likelihood of the observations can be written as:

$$p(x|\theta) = (2\pi\sigma^2)^{-N/2} \exp\left(-\frac{1}{2\sigma^2} \|x - V\alpha - U\beta\|_2^2\right). \quad (15)$$

Because the Euclidian norm is invariant under rotation, Eq. (15) can be written as:

$$\begin{aligned} p(x|\theta) &= (2\pi\sigma^2)^{-N/2} \exp\left(-\frac{1}{2\sigma^2} \|\underbrace{U^T(x - V\alpha)}_{x_{tran|ton}} - \beta\|_2^2\right) \\ &= (2\pi\sigma^2)^{-N/2} \exp\left(-\frac{1}{2\sigma^2} \|\underbrace{V^T(x - U\beta)}_{x_{ton|tran}} - \alpha\|_2^2\right). \end{aligned} \quad (16)$$

According to Eq. (16), conditionally upon β (resp. α) and the other parameters, inferring α (resp. β) is thus a simple regression problem with data $x_{ton|tran}$ (resp. $x_{tran|ton}$), variable α (resp. β) modeled as i.i.d. conditionally upon γ_{ton} (resp. γ_{tran}), and i.i.d. noise, that does not require any matrix inversion.

Briefly, (γ_{ton}, α) and (γ_{tran}, β) are jointly sampled from by 1) sampling γ_{ton} (resp. γ_{tran}) from the posterior conditional distribution $p(\gamma_{ton,n}|\sigma_{ton,n}, \sigma, x_{ton|tran})$ (resp. $p(\gamma_{tran,m}|\sigma_{tran,m}, \sigma, x_{tran|ton})$), and 2) sampling α (resp. β) from the posterior conditional distribution $p(\alpha_n|\gamma_{ton,n}, \sigma_{ton,n}, \sigma, x_{ton|tran})$ (resp. $p(\beta_m|\gamma_{tran,m}, \sigma_{tran,m}, \sigma, x_{tran|ton})$). The detailed posterior distributions are given in Appendix A, and we refer the reader to (Févotte *et al.*, 2008; Geweke, 1996) for more details.

The posterior distribution of the other parameters $\sigma_{ton}, \sigma_{tran}, \nu_{ton}$ and ν_{tran} are easy to sample from since they have conjugate prior distributions and thus the corresponding posterior will have the same form.

The principal steps of the Gibbs sampler are summarized in Table I, where K is the total number of iterations

of the Gibbs sampler and K_{Burnin} is the burn-in length, corresponding to the number of iterations required before the Markov chain $\{\theta^{(1)}, \theta^{(2)}, \dots\}$ reaches its stationary distribution. We provide the full posterior distributions in Appendix A.

TABLE I. Gibbs sampler steps for parameters inference.

```

Initialize  $\theta^{(0)}$ 
for  $k = 1 : K + K_{Burnin}$  do
  Update tonals
  Update  $\gamma_{ton}$  and  $\alpha$ 
   $\gamma_{ton}^{(k)} \sim p(\gamma_{ton} | \sigma_{ton}^{(k-1)}, \sigma^{(k-1)}, x_{ton|tran}^{(k-1)})$  (Eq. (A1))
   $\alpha^{(k)} \sim p(\alpha | \gamma_{ton}^{(k)}, \sigma_{ton}^{(k-1)}, \sigma^{(k-1)}, x_{ton|tran}^{(k-1)})$  (Eq. (A5))
  Update hyperparameters
   $\sigma_{ton}^{(k)} \sim p(\sigma_{ton} | \alpha^{(k)}, \lambda_{ton}^{(k-1)})$  (Eq. (A7))
   $\lambda_{ton}^{(k)} \sim p(\lambda_{ton} | \sigma_{ton}^{(k)})$  (Eq. (A9))
  Update transients
  Update  $\gamma_{tran}$  and  $\beta$ 
   $\gamma_{tran}^{(k)} \sim p(\gamma_{tran} | \sigma_{tran}^{(k-1)}, \sigma^{(k-1)}, x_{tran|ton}^{(k-1)})$  (Eq. (A3))
   $\beta^{(k)} \sim p(\beta | \gamma_{tran}^{(k)}, \sigma_{tran}^{(k-1)}, \sigma^{(k-1)}, x_{tran|ton}^{(k-1)})$  (Eq. (A6))
  Update hyperparameters
   $\sigma_{tran}^{(k)} \sim p(\sigma_{tran} | \beta^{(k)}, \lambda_{tran}^{(k-1)})$  (Eq. (A8))
   $\lambda_{tran}^{(k)} \sim p(\lambda_{tran} | \sigma_{tran}^{(k)})$  (Eq. (A10))
  Update noise
   $\sigma^{(k)} \sim p(\sigma | \alpha^{(k)}, \beta^{(k)}, x)$  (Eq. (A11))
end for

```

The Minimum Mean Square Estimates (MMSE) of the parameters θ can then be computed from the Gibbs samples $\{\theta^{(K_{Burnin})}, \theta^{(K_{Burnin}+1)}, \dots, \theta^{(K)}\}$ of the posterior distribution $p(\theta|x)$:

$$\hat{\theta}_{MMSE} = \int \theta p(\theta|x) d\theta \quad (17)$$

$$\approx \frac{1}{K - K_{Burnin}} \sum_{k=K_{Burnin}+1}^K \theta^{(k)}. \quad (18)$$

Time-domain source estimates are reconstructed by inverse transform of the estimated coefficients (inverse MDCT in our case). The denoised estimation is constructed by $\hat{x} = \alpha V + \beta U$.

IV. EXPERIMENTS PROTOCOL AND EVALUATION MEASURES

In this Section, we describe the test-set and measures we use for the evaluation of the proposed model.

A. Experimental setup

We present simulation results on 5 musical excerpts of various music styles that are described in Table II. These signals have been chosen because they have diverse characteristics: the *Glockenspiel* signal is a monophonic signal of a tuned percussion instrument, the *Misery* and *Love Me Do* signals are two complex polyphonic excerpts of Beatles songs containing voice and drum sounds, the

Beethoven String Quartet signal is an excerpt of a string quartet and the *Mozart Piano Sonata* signal is an excerpt of polyphonic piano music.

TABLE II. Sound excerpts used for evaluation of the model. SR: sampling rate.

Name	SR (Hz)	Duration
Glockenspiel	44100	2s
Misery (Beatles)	11025	11s
Love Me Do (Beatles)	11025	5s
Beethoven String Quartet Op.127 – 1	11025	11s
Mozart Piano Sonata KV310 – 1	11025	11s

a. Parameters : The length of the two MDCT bases are set to 1024 samples for the tonal layer and 128 samples for the transient layer, at a sampling rate of 44100Hz, and respectively to 256 and 32 samples at a sampling rate of 11025Hz. The MDCT of the clean and noisy signals, with input SNR = 10dB are represented in Figure 7. The MMSE and MAP estimates of the parameters are computed by averaging the last 100 samples of the Gibbs sampler, run for 500 iterations.

We compare a semi-automatic model (denoted as version SA), assuming that the transcription is known (notes for the monophonic signal, chords for the polyphonic signals, and beat locations) with a fully-automatic model where the music content is directly estimated from the input signal (denoted as version A). Our approach that incorporates musical priors is compared with the one presented in (Févotte *et al.*, 2008), described in Section II.C.3, in which the priors for both the tonal and transient layers are based on time-frequency persistency properties (version (Févotte *et al.*, 2008)).

B. Evaluation measures

1. Audio denoising:

In the context of audio denoising task, artificial noisy signals are created by adding Gaussian white noise to the clean signal with various input SNRs. The case without additional noise *WN* (without noise) corresponds to a separation into two layers *transient + tonal*. Partials are expected to be recovered in the tonal layer while attacks or percussive sounds will be recovered in the transient layer. The results in terms of output SNR provide an objective evaluation measure. However, although widely used for assessing algorithm performances, the SNR is not a completely relevant measure of distortion for audio signals and is insufficient to measure the quality or intelligibility of the reconstructed signals. Indeed, it does not reflect exactly the perceived audio quality that includes distortion of the reconstructed signal, musical noise or other artifacts.. Subjective evaluation by listening to the signals is also required. Subjective quality assessment of signal reconstruction in source separation or denoising tasks is an active ongoing topic of re-

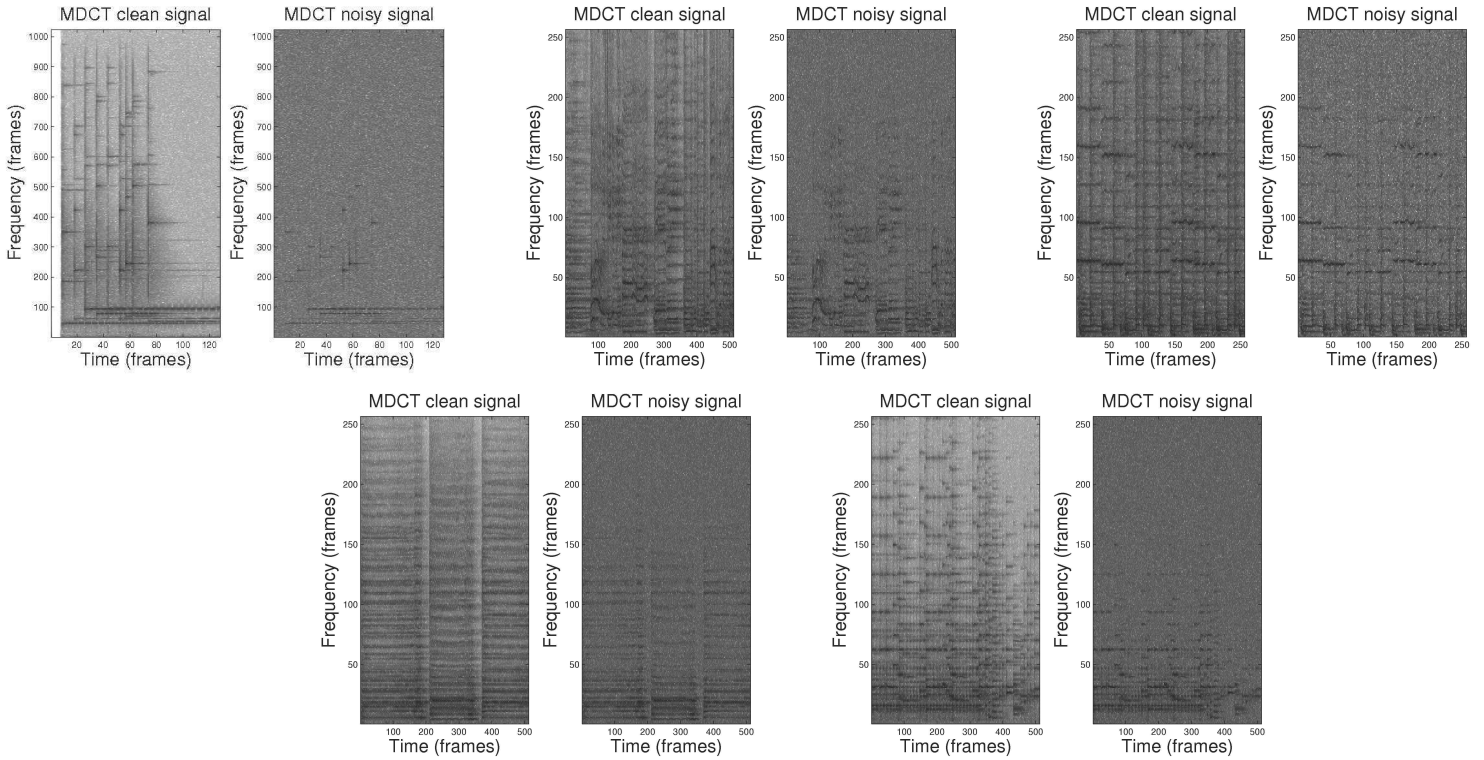


FIG. 7. MDCT of the clean and noisy signals, with input $SNR = 10dB$. Form top top bottom : Glockenspiel, Misery, Love Me Do, Beethoven and Mozart excerpts.

1 search (Vincent *et al.*, 2006; Emiya *et al.*, 2010; Rohden- 27
 2 burg *et al.*, 2005). It has been found that statistically 28
 3 significant results can be obtained from listening tests 29
 4 with less than ten non-expert subjects (Vincent *et al.*, 30
 5 2006). However, conducting large-scale listening tests
 6 is out of scope of this work, and the subjective assess-
 7 ment of the results is limited here to an analysis and
 8 description by the authors of the audio excerpts obtained
 9 by the proposed algorithm. All the audio excerpts are
 10 available at [http://webpages.lss.supelec.fr/perso/](http://webpages.lss.supelec.fr/perso/matthieu.kowalski/jasa/jasa.htm) 31
 11 [matthieu.kowalski/jasa/jasa.htm](http://webpages.lss.supelec.fr/perso/matthieu.kowalski/jasa/jasa.htm) (date last viewed 32
 12 01/20/13).

13 2. Sparsity:

14 In this work, we aim at obtaining a dual representa- 39
 15 tion of the signal that is sparse, but that is also struc- 40
 16 tured and is meaningful according to the music content
 17 of the analyzed audio excerpt. A number of criteria for
 18 measuring the sparsity of an expansion have been pro- 41
 19 posed. Among them, Rényi entropies (Rényi, 1961), a
 20 generalization of the Shannon entropy, have been intro- 42
 21 duced in (Baraniuk *et al.*, 2001) as measures for estimat- 43
 22 ing the complexity and information content of a signal 44
 23 through its time-frequency representation. It has been 45
 24 shown that minimizing the complexity or information of 46
 25 a time-frequency representation of a signal is equivalent 47
 26 to maximizing its concentration, peakiness, and resolu- 48

tion. Let $\Phi \in \mathcal{L}^2(\mathbb{R}^2)$ be a time-frequency representation
 of a unit-energy signal $s \in \mathcal{L}^2(\mathbb{R})$ (for instance, in this ar-
 ticle Φ is the MDCT transform of the signal). The Rényi
 entropies of Φ , defined as:

$$R_\alpha(\Phi(t, f)_s) = \frac{1}{1-\alpha} \log_2 \int \int \Phi(t, f)_s^\alpha dt df, \quad \alpha \in [0, 1], \quad (19)$$

may be interpreted as sparsity measures and have thus
 been used as a criterion for obtaining a sparse expan-
 sion of an audio signal (Jaillet and Torr sani, 2004; Li-
 uni *et al.*, 2011). In the present work, we use a R nyi
 entropy criteria as an evaluation measure to compare the
 sparsity of the significance maps. We present here results
 with $\alpha = 0.9$, similar results were obtained with different
 criteria.

Sparsity is also measured in terms of the percentage of
 atoms selected in the significance maps.

C. Computational performances

The algorithms are implemented in MATLAB and per-
 formed on a MacBook Pro Intel Core 2 Duo clocked at
 2.4GHz with 2GB RAM. The computation time of the
 proposed method is similar to the one obtained with
 (F votte *et al.*, 2008), ≈ 270 s for processing the *Glock-*
enspiel signal for instance. Note that the use of MCMC
 schemes generates high computational costs.

V. RESULTS AND DISCUSSION

The aim of this section is to provide an analysis of the proposed approach for sparse and structured expansion of audio signals on overcomplete dictionaries. In order to compare our approach to previous work, we evaluate the performance of the proposed approach for the task of audio denoising. **Our purpose is to show how expert music knowledge can be used to build priors to obtain a relevant signal decomposition. The main contribution of the article is the design of new musical priors. In order to evaluate the impact of the prior itself, we compare our results with (Févotte *et al.*, 2008), that specifically differs from the proposed method in the priors.** The impact of the various parameters (tuning, harmonics, and priors settings) is studied. We also provide a detailed analysis of our model in terms of sparsity and in terms of interpretability of the representation. We wish to show that the use of priors built on music content information allows making the structure of the signal legible and leads to a representation that has a musical/physical meaning.

A. Structured representation

Our aim here is to provide a structured representation of the signal that is meaningful from a musical point of view, in the sense that it highlights characteristics of the signal that are of interest. Such a relevant representation may be very useful for extracting higher-level information for a given MIR application. For instance, having a clear representation of the partials of the notes may be useful for removing the drum from a polyphonic excerpt.

The use of musical priors yields a structure that better reflects the music content of the signal compared to the approach that uses physical priors. Figure 8 shows the significance maps of the selected atoms (MMSE estimates) for the *Glockenspiel* signal, in the *WN* case, **obtained with the (Févotte *et al.*, 2008) approach [left-top], using musical priors for the transient layer [left-bottom], using musical priors for the tonal layer [right-top], using musical priors for both the tonal and transient layers [right-bottom].** When using musical priors for the tonal layer, the resolution of the tonal significance map is sharper. The partials of the notes clearly appear as thin horizontal lines and are better discriminated, especially in low frequencies. The beginning of the notes is also clearer. The structure of the significance maps is even sharper and legible when we also use musical priors for the transient layer.

However, it should be noticed that, especially under low-input SNRs conditions, one may perceive artifacts in the reconstructed signal with the method we propose. These artifacts may be due, on the one hand, to the fact that some high frequencies are captured by the transient basis rather than by the tonal basis. On the other hand, the construction of the significance map corresponding to the transient layer leads to some regular “clicks” that are audible in low frequencies. But, in spite of these artifacts, one can find by listening to the reconstructed signals that results obtained relying on musical priors are generally

“richer” than the ones obtained with the approach used in (Févotte *et al.*, 2008). This is very clear for instance in the case of the *Beethoven* excerpt, with $SNR_{in} = 10\text{dB}$. The chords (especially those on beats 2 and 3) sound more “round”, and the notes are better held. It should be noticed that listening tests in general do not reveal noticeable improvement when using musical prior also for the transient layer, even though the reconstructed signal in the case of the *Mozart* excerpt with $SNR_{in} = 0\text{db}$ sounds a little “flatter” without musical prior for the transient layer.

B. Semi-automatic versus automatic approach

1. Tonal layer

Table III shows that the SNR results obtained with an automatic approach (*A*), where the tonal content is directly estimated from the audio (using a chord estimation algorithm), are similar to the ones obtained with a semi-automatic approach (*SA*), where the transcription (chord ground-truth) is given as an input of the model. Results are similar at the same time in terms of SNR, in terms of legibility of the significance maps, and in terms of listening tests. The results of chord estimation are indicated in Table III and show that the chord estimation is not perfect. Two scores are considered: *Exact Estimation EE* corresponds to the rate of chords correctly detected; *Exact + Neighbor E+N* corresponds to the rate of correctly detected chords including neighboring chords⁷. It can be seen that the exact chord estimation results may be low, especially in low input SNR conditions (for instance $EE = 28.35\%$ for the *Love Me Do* excerpt, with $SNR_{in} = 0$). However, most errors correspond to neighboring chords (high *E + N* results), which indicates that most of the notes present in the signal are correctly taken into account. A rough estimation of the tonal content is thus sufficient to build relevant prior for the significance map corresponding to the tonal layer.

2. Transient layer

The difference between the SNR results obtained with an automatic approach, where the beats are directly estimated from the audio (using a beat tracking algorithm) and a semi-automatic approach where the beat locations are given as an input of the model, was in each case $\leq 0.1\text{dB}$ **(For conciseness, detailed results are not reported here).** Here again, the transcription does not need to be perfect to build relevant prior for the significance map corresponding to the transient layer.

C. Influence of musical priors for the transient layer only

Table IV shows the effect of using musical priors for the transient layer only (and using frequency persistency-based priors for the tonal layer, as in (Févotte *et al.*, 2008)), denoted as case *Method tr*. In terms of SNR,

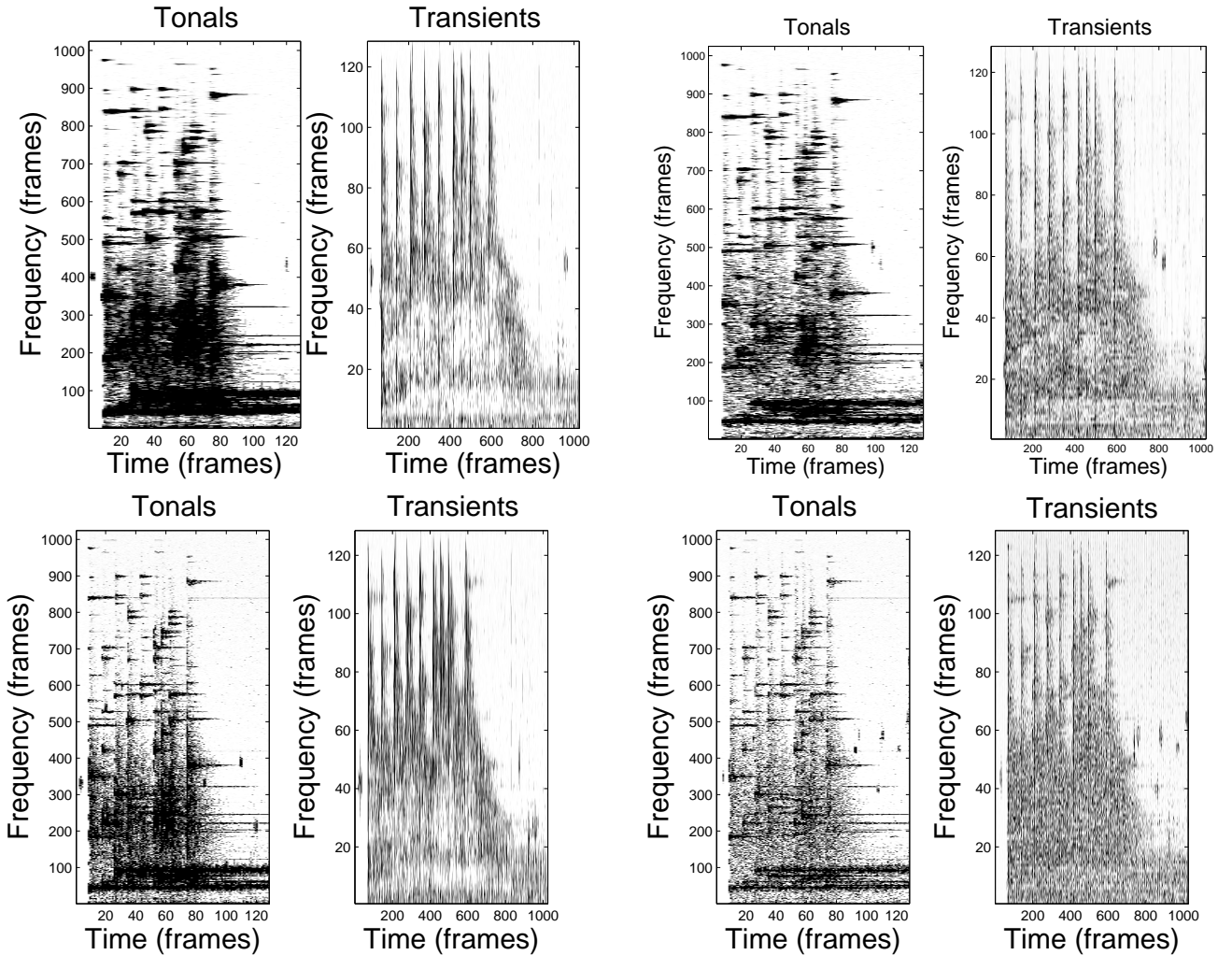


FIG. 8. Significance maps of the tonal and transient bases (MMSE estimates) for the *Glockenspiel* excerpt, case *WN*. Left-top: approach (Févotte *et al.*, 2008); Left-bottom: proposed approach using musical priors for the transient layer only; Right-top: proposed approach using musical priors for the tonal layer; Right-bottom: proposed approach using musical priors for both the tonal and transient layers.

1 musical priors for the transient layer yield results that 20
2 are equivalent to state-of-the-art results, except for poly- 21
3 phonic clean signals. For monophonic and polyphonic 22
4 noisy signals, the use of musical priors for transients re-
5 sults in a tonal layer that may be more consistent with
6 the music content: the partials of the notes are more
7 distinguishable, as illustrated in Figure 8 [Left-bottom]. 23
8 However, for clean polyphonic signals, the use of beat po- 24
9 sitions as prior information for building the transit layer 25
10 is too restrictive for having a satisfying decomposition.
11 When listening to the results on the *Mozart* excerpt, one 26
12 can hear that the residual part obtained with *Method* 27
13 *tr.* is non-negligible compared to the one obtained with 28
14 *Method* (Févotte *et al.*, 2008), although it should be zero.
15 For the Beethoven excerpt, some high frequencies are 29
16 captured by the transient basis rather than by the tonal 30
17 basis, as it is illustrated Figure 9. Using musical prior 31
18 for transients based on the metrical structure thus shows 32
19 some potential, as it is adapted to the semantic content 33

of the signal, but it should be refined, for instance by
using onset positions instead of beat positions. This is
also discussed in Section V.E.

D. Comparison between chromagram versus chords

We have proposed two methods for building priors for
the significance map corresponding to the tonal layer.

1. In the first case (*Method Chord*), the map is built
using information about the tonal content from the
estimated chords.
2. In the second case (*Method Chroma*), the map is
built using information about the tonal content di-
rectly from the chromagram.

Table V shows that *Method Chord* outperforms *Method
Chroma* in terms of SNR in the case without noise added

TABLE III. SNR results (in dB), and chord estimation results (*EE*: Exact Estimation, *E+N*: Exact + Neighbor) for various input SNRs and without additional Gaussian noise (*WN*), for comparison between a semi-automatic (estimated chords) and an automatic (given chords) approach.

	SNR_{in}	<i>WN</i>		0		10		20	
		<i>A</i>	<i>SA</i>	<i>A</i>	<i>SA</i>	<i>A</i>	<i>SA</i>	<i>A</i>	<i>SA</i>
<i>Gl.</i>	<i>EE</i>	14.39		14.39		14.39		14.39	
	<i>E + N</i>	72.27		72.27		72.27		72.27	
	SNR_{out}	71.07	71.36	14.15	14.13	21.31	21.37	28.58	28.59
<i>Mi.</i>	<i>EE</i>	79.22		79.02		79.22		78.77	
	<i>E + N</i>	82.00		88.1		82.00		81.54	
	SNR_{out}	42.28	42.73	6.36	6.35	13.02	13.02	20.91	20.87
<i>Lo.</i>	<i>EE</i>	95.29		28.35		60.58		96.27	
	<i>E + N</i>	100		92.62		100		100	
	SNR_{out}	29.12	28.31	6.44	6.42	12.44	12.44	19.24	19.21
<i>Be.</i>	<i>EE</i>	87.22		86.56		86.77		86.77	
	<i>E + N</i>	100		100		100		100	
	SNR_{out}	55.15	54.72	7.17	7.15	13.56	13.54	21.63	21.62
<i>Mo.</i>	<i>EE</i>	75.69		70.26		75.25		75.69	
	<i>E + N</i>	90.26		88.70		90.26		90.26	
	SNR_{out}	62.13	62.33	8.20	8.19	15.47	15.47	23.40	23.42

TABLE IV. SNRs results (in dB), for various input SNRs and without additional Gaussian noise (*WN*), for comparison between using musical priors for the transient layer only, case *tr*, and with the baseline approach (Févotte *et al.*, 2008) (*F2008*).

SNR_{in}	<i>WN</i>		0		10		20	
	<i>tr</i>	<i>F2008</i>	<i>tr</i>	<i>F2008</i>	<i>tr</i>	<i>F2008</i>	<i>tr</i>	<i>F2008</i>
<i>Gl.</i>	70.01	70.22	15.54	15.74	22.14	22.45	29.16	29.22
<i>Mi.</i>	33.38	44.41	6.89	6.90	13.13	13.29	20.43	21.08
<i>Lo.</i>	27.30	29.61	6.72	6.77	12.77	12.72	19.49	19.35
<i>Be.</i>	39.60	54.64	7.71	7.71	13.90	14.03	21.44	21.99
<i>Mo.</i>	54.47	60.96	8.98	8.97	15.87	15.94	23.59	23.88

1 to the clean signal, and in the case of the monophonic signal. *Method Chroma* slightly outperforms *Method Chord* in terms of SNR in the case of polyphonic music and when noise is added to the clean signal. Experiments reveal that the significance maps obtained with *Method Chroma* are sharper and sparser than those obtained with *Method Chord*, as illustrated in Figure 10. Moreover, listening tests reveal that the noise induced by the proposed method in the case of *Method Chord*, is considerably reduced when using *Method Chroma*, especially when musical priors are used both for the tonal and the transient layers (see for instance the *Beethoven* excerpt, case $SNR_{in} = 10\text{dB}$).

14 However, reconstructed signals using *Method Chroma* are not systematically more pleasant to listen too. A drawback of *Method Chroma* is that, because the hierarchy between the 12 pitch classes is less strong than with *Method Chord* when building the prior for the tonal layer (because all pitch classes are given a non-zero contribution, whereas in the case of *Method Chord*, only 3 pitch classes are considered at each time-instant), the reconstructed signal may select notes that do not

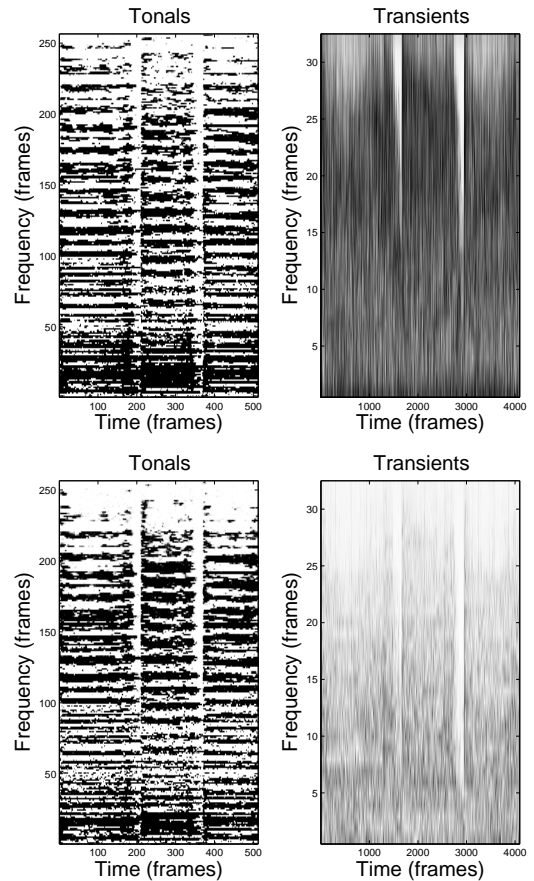


FIG. 9. Significance maps of the tonal and transient bases (MMSE estimates) for the *Beethoven* excerpt, case *WN*. Top: approach (Févotte *et al.*, 2008); Bottom: proposed approach using musical priors for the transient layer only.

TABLE V. SNRs results (in dB), for various input SNRs and without additional Gaussian noise (*WN*), for comparison between *Method Chord* (*Cho*) and *Method Chroma* (*Chr*).

SNR_{in}	<i>WN</i>		0		10		20	
	<i>Cho</i>	<i>Chr</i>	<i>Cho</i>	<i>Chr</i>	<i>Cho</i>	<i>Chr</i>	<i>Cho</i>	<i>Chr</i>
<i>Gl.</i>	71.35	69.90	14.13	13.27	21.37	20.70	28.59	27.87
<i>Mi.</i>	42.73	37.09	6.35	7.04	13.02	13.35	20.87	20.89
<i>Lo.</i>	28.32	26.19	6.42	6.80	12.44	12.85	19.21	19.27
<i>Be.</i>	54.72	54.62	7.15	8.63	13.53	14.52	21.62	22.05
<i>Mo.</i>	62.33	60.1	8.19	9.45	15.47	16.28	23.42	23.96

fit the harmonic content, similarly to the one obtained with approach (Févotte *et al.*, 2008). In this case, one may perceive “wrong” notes in the reconstructed signal, especially in high frequencies, as it can be heard, for instance, when listening to the *Mozart* excerpt, case $SNR_{in} = 10\text{dB}$. This blurry phenomenon has especially an impact in the case on clean and monophonic signals.

TABLE VI. SNR results for comparison between the proposed method that uses musical priors and the approach proposed in (Févotte *et al.*, 2008) (*F2008*). Case *A*: musical priors only for the tonal layer (automatic approach). Case *A + tr*: musical priors for the tonal and the transient layer.

SNR_{in}	<i>WN</i>			0			10			20		
	Method	<i>A</i>	<i>A + tr</i>	<i>F2008</i>	<i>A</i>	<i>A + tr</i>	<i>F2008</i>	<i>A</i>	<i>A + tr</i>	<i>F2008</i>	<i>A</i>	<i>A + tr</i>
Gl.	71.35	71.49	70.22	14.13	13.86	15.74	21.37	20.98	22.45	28.59	28.24	29.22
Mi.	42.73	32.72	44.41	7.03	7.04	6.9	13.35	13.34	13.29	20.89	20.60	21.08
Lo.	28.32	27.14	29.61	6.80	6.72	6.77	12.85	12.95	12.72	19.27	19.72	19.35
Be.	54.72	35.97	54.64	8.63	8.65	7.71	14.52	14.54	14.03	22.05	21.49	21.99
Mo.	62.33	57.07	60.96	9.45	9.37	8.97	16.28	16.12	15.94	23.96	23.73	23.88

E. Denoising quality

Table VI compares results obtained with the proposed method that uses musical priors with the approach proposed in (Févotte *et al.*, 2008). **As underlined in the previous section, *Method Chroma* has a negative “blurry” effect on clean and monophonic signals. Ideally, the method should be selected according to the type of test signal. For the sake of legibility, we do not report results with both methods in Table Table VI. Our purpose here is to demonstrate the potential of the proposed musical priors, compared to existing approaches. We thus present the best results, obtained with *Method Chroma* in the case of polyphonic music and when noise is added to the clean signal and *Method Chord* otherwise.** Concerning the quality of denoising, our model provides results that are comparable to state-of-the-art algorithms in terms of SNR: the difference between our method and method (Févotte *et al.*, 2008) are in general lower than 1 dB. The method proposed in (Févotte *et al.*, 2008) slightly outperforms our method in the case of monophonic music, whereas our method performs slightly better in the case of polyphonic music. Our explanation is that, by relying on chord information, too many notes are considered when building the prior corresponding to the tonal significance map of the monophonic excerpt. A polyphonic/monophonic detection step could be added to improve the proposed model.

Differences between the two approaches may be perceived while listening to the sound files. As said before, the proposed approach induces some artifacts. In particular, the quality of denoising obtained with the proposed prior for the transient layer is disappointing. Indeed, the construction of the significance map corresponding to the transient layer leads to some regular “click” sounds that are superimposed to the signal of interest. As indicated in Table VII and illustrated in Figure 10 and 11, compared to (Févotte *et al.*, 2008), our approach selects much less atoms in the transient layer. Although the idea seems “natural”, the use of beat position information for building the prior for the transient layer may be too restrictive for denoising purpose.

When we build the tonal significance map, we select at each time instant all the MDCT bins that correspond to the notes of the estimated chord, regardless of octaves. Because the estimation of the tonal content is rough (we do not have an exact transcription and ignore for instance passing tones), some of the “tubes” that result from this

selection in the tonal significance map may correspond to added notes that are not actually in the signal and thus not completely relevant. However, these atoms are musically coherent with the music content (they are coherent with the underlying harmony) and are not as disturbing as if they were atoms randomly selected. Figure 11 shows the significance maps (MMSE estimates) for the *Mozart* signal, in the case $SNR_{in} = 10$ dB. It can be seen that in the case of (Févotte *et al.*, 2008) approach, many atoms that do not fit the tonal content are selected, especially in high frequencies. When listening to the reconstructed signal, one may perceive some notes that seem “wrong”. When listening to the signal obtained with the proposed approach, one may also perceive some added notes, but they are coherent with the harmonic content. This is important when extracting higher-level information from the reconstructed signal. For instance, in the case of key estimation, the algorithm will be less affected by notes that belong to the tonal content than by notes that seem randomly selected.

F. Sparsity

In the case of polyphonic music, the proposed approach provides a representation that is sparser than the one proposed in (Févotte *et al.*, 2008). Indeed, the number of remaining non-zero coefficients in contrast to the total numbers of atoms of the initial redundant dictionary is usually lower when using musical priors, as well as Renyi entropy, as it can be seen in Table VII. Figures 8, 10 and 11 illustrate the fact that the energy density of the significance map corresponding to the tonal layer is concentrated into thin horizontal lines, and Figures 8, 10 and 12 clearly illustrate that the energy density of the significance map corresponding to the transient layer is concentrated into thin vertical lines. In the case of monophonic music, figures in Table VII indicate that our representation is less sparse than the one provided in (Févotte *et al.*, 2008). This is because our method induces some artifacts resulting from undesirable selected atoms (see Figure 12, [middle]). The representation may become sparser by increasing the value of p_{ton} in Eq. (9), as explained in Section V.G.1. Note that, as illustrated in Figure 8, in the case of running the algorithm on a clean signal (case *WN*), our approach provides a representation that is sparser than the one obtained with (Févotte *et al.*, 2008), where a small noise is needed to obtain a

TABLE VII. Percentage of remaining non-zero coefficients selected for the tonal layer (% *ton.*) and the transient layer (% *tran.*) and value of Renyi entropy for tonal layer (*Renyi ton.*) and the transient layer (*Renyi tran.*) (MAP estimates). Case: *F2008*: approach in (Févotte *et al.*, 2008). Case *A*: musical priors only for the tonal layer (using estimated chords). Case *A + tr*: musical priors for the tonal and the transient layer.

Method	SNR_{in}	WN			0			10			20		
		<i>A</i>	<i>A + tr</i>	<i>F2008</i>	<i>A</i>	<i>A + tr</i>	<i>F2008</i>	<i>A</i>	<i>A + tr</i>	<i>F2008</i>	<i>A</i>	<i>A + tr</i>	<i>F2008</i>
<i>Gl.</i>	% <i>ton.</i>	26.1482	19.7510	30.3772	2.0317	1.9966	1.5022	2.5848	2.4879	1.5518	3.3974	3.2333	3.3745
	% <i>tran.</i>	29.0039	33.0078	24.6094	0	8.9844	0	0	6.8359	0	0	5.9570	0
	<i>Renyi ton.</i>	15.0604	14.6550	15.2776	11.3662	11.3403	10.9392	11.7111	11.6559	10.9812	12.1047	12.0313	12.0875
	<i>Renyi tran.</i>	15.2006	15.3874	14.9631	<i>NaN</i>	13.5122	<i>NaN</i>	<i>NaN</i>	13.1180	<i>NaN</i>	<i>NaN</i>	12.9194	<i>NaN</i>
<i>Mi.</i>	% <i>ton.</i>	23.1979	14.7957	50.7500	3.0151	3.0815	15.7799	5.2574	5.5031	25.5539	9.0256	9.4261	37.4146
	% <i>tran.</i>	58.3740	32.6172	44.8242	11.8164	16.2109	12.3047	21.5820	19.3359	48.9014	46.1914	23.3398	67.8223
	<i>Renyi ton.</i>	14.8886	14.2306	16.0161	11.9396	11.9697	14.3331	12.7418	12.8048	15.0260	13.5188	13.5808	15.5774
	<i>Renyi tran.</i>	16.1770	15.3702	15.7958	13.9016	14.3637	13.9315	14.7733	14.6180	15.9218	15.8713	14.8896	16.3935
<i>Lo.</i>	% <i>ton.</i>	16.6702	12.2955	45.8679	2.6535	2.8152	11.4395	4.8920	5.0903	20.6650	8.7173	8.7738	32.9956
	% <i>tran.</i>	74.0723	37.5000	27.0020	31.2500	20.3125	10.2051	45.7031	26.5625	19.4824	51.9531	32.2266	24.6582
	<i>Renyi ton.</i>	13.4112	12.9614	14.8705	10.7474	10.8349	12.8587	11.6348	11.6909	13.7200	12.4686	12.4759	14.3943
	<i>Renyi tran.</i>	15.5207	14.5736	14.0640	14.3106	13.6891	12.6616	14.8560	14.0761	13.5926	15.0413	14.3550	13.9329
<i>Be.</i>	% <i>ton.</i>	30.2101	19.2009	44.4839	3.1097	3.0518	8.9005	5.6511	5.9242	18.5188	9.5741	10.3973	32.7576
	% <i>tran.</i>	57.5195	31.2500	61.3037	2.9297	6.8359	13.4033	23.4375	6.7383	82.7148	80.0781	15.8203	99.8779
	<i>Renyi ton.</i>	15.2689	14.6063	15.8275	11.9828	11.9540	13.5067	12.8449	12.9090	14.5619	13.6028	13.7216	15.3836
	<i>Renyi tran.</i>	16.1560	15.3084	16.2482	11.8713	13.1180	14.0549	14.8926	13.0972	16.6802	16.6664	14.3285	16.9521
<i>Mo.</i>	% <i>ton.</i>	36.0977	21.1670	42.2409	2.9648	2.9938	8.1978	4.6402	4.8706	12.5305	7.4661	7.5645	18.7614
	% <i>tran.</i>	39.4287	54.6875	33.2764	4.1992	14.7461	14.4043	39.3555	15.8203	47.2656	79.9805	28.8086	92.5049
	<i>Renyi ton.</i>	15.5174	14.7432	15.7447	11.9101	11.9226	13.3835	12.5500	12.6164	13.9843	13.2364	13.2536	14.5687
	<i>Renyi tran.</i>	15.6106	16.1180	15.3662	12.4149	14.2271	14.1588	15.6433	14.3285	15.8731	16.6655	15.1933	16.8414

1 good decomposition.

26 using tuning information allows selecting atoms within
27 the correct frequency regions.

2 G. Impact of parameters

3 1. Indicator variable prior set-up:

4 The values p_{ton} in Eq. (9) and Eq. (10) and p_{tran} in
5 Eq. (13) have an effect on the above-mentioned artifacts
6 produced by our model in low-input SNRs conditions.
7 For instance, setting p_{ton} and p_{tran} to 0.99 instead of
8 0.9 in the case of the *Glockenspiel* signal allows reducing
9 the artifacts for $SNR_{in} = 10dB$, as it can be seen in
10 Figure 12. However, our experiments show that indicator
11 variables corresponding to atoms that do not belong to
12 the chord must not be set to 0. Setting p_{ton} or p_{tran} to 1
13 results in reconstructed signals of very “poor” sound, as it
14 can be assessed by listening tests. Output SNRs are also
15 degraded. Setting $p_{ton} < 1$ allows taking into account
16 imperfections of the chromagram given as input of the
17 hybrid model (temporal imperfections due to windowing,
18 discrepancy between the ideal model and reality, *etc.*).

19 2. Impact of tuning:

20 Integrating tuning information in the model does not
21 lead to improvement in terms of output SNR values (de-
22 tailed results are not reported here to avoid overfill of the
23 article), but yields to estimated significance maps that
24 are more coherent with our model. Indeed, the “tubes”
25 depend on the tuning and thus, in case of “bad” tuning,

28 3. Impact of harmonics:

29 We did not find any improvement when adding har-
30 monics in our model : the difference between the SNR
31 results obtained with and without considering the har-
32 monics was systematically $\leq 0.3dB$ (detailed results are
33 not reported here to avoid overfill of the article). This
34 may be explained by the fact that, in the polyphonic
35 case, the contribution of a large part of the first 6 higher
36 harmonics of a note is already taken into account in the
37 significance map by the other notes. For instance, let us
38 consider C major chord (C-E-G). The C note generates
39 harmonics E and G. E and G are thus both actual played
40 notes and harmonics. Their contribution is already par-
41 tially taken into account in the significance map in the
42 case of the model “without harmonics” .

43 VI. CONCLUSION AND FUTURE WORK

44 In this article, we have presented a new approach for
45 sparse decomposition of audio signals of music on an over-
46 complete dictionary made as the union of two MDCT
47 bases. The originality of our model is that, within a
48 Bayesian framework, we introduce musical priors that
49 aim at modeling dependencies between the coefficients of
50 the expansion in a more realistic way than what has been
51 proposed before. The main contribution of the article is

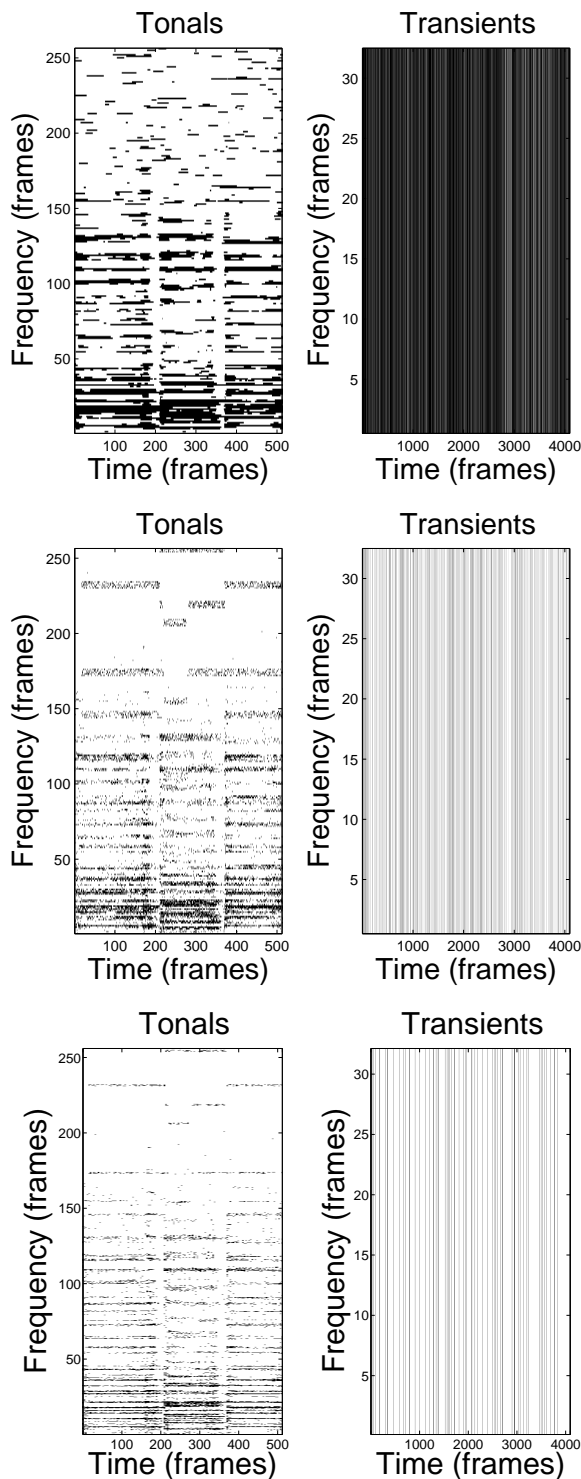


FIG. 10. Significance maps of the tonal and transient bases (MAP estimates) for the *Beethoven* excerpt, case $SNR_{in} = 10\text{dB}$. Top: approach (Févotte *et al.*, 2008); middle: proposed approach using musical priors for both layers, *Method Chord*; bottom: proposed approach using musical priors for both layers, *Method Chroma*.

1 to show that the musical prior based on musical knowl- 8
 2 edge performs as well as more sophisticate prior as HMM 9

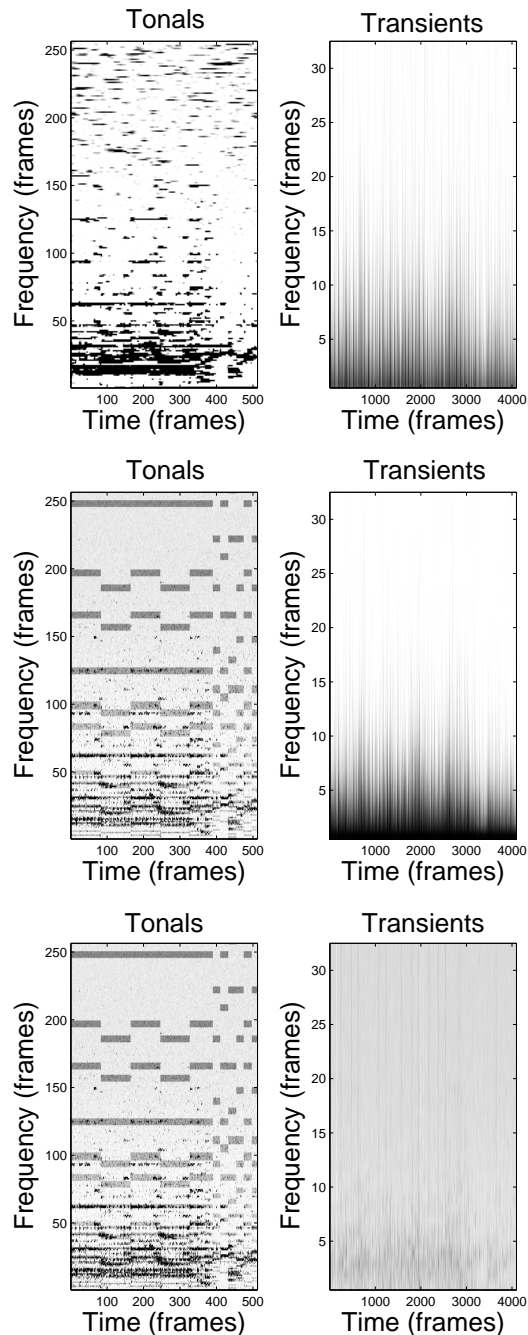


FIG. 11. Significance maps of each basis (MMSE estimates) for the *Mozart* excerpt, case $SNR_{in} = 10\text{dB}$. Top: approach (Févotte *et al.*, 2008); middle: proposed approach using a musical prior for the tonal layer; bottom: proposed approach using musical priors for both the tonal and transient layers.

3 and appears to be more “natural”. The significance maps
 4 corresponding to the tonal and transient layers are coher-
 5 ent with the intrinsic content of music audio.

6 We have provided numerical results and a number of
 7 case study examples that assess that our model is ade-
 8 quate to fairly represent audio signals of music. The de-
 9 noising task has been used as a “proof of concept” of the

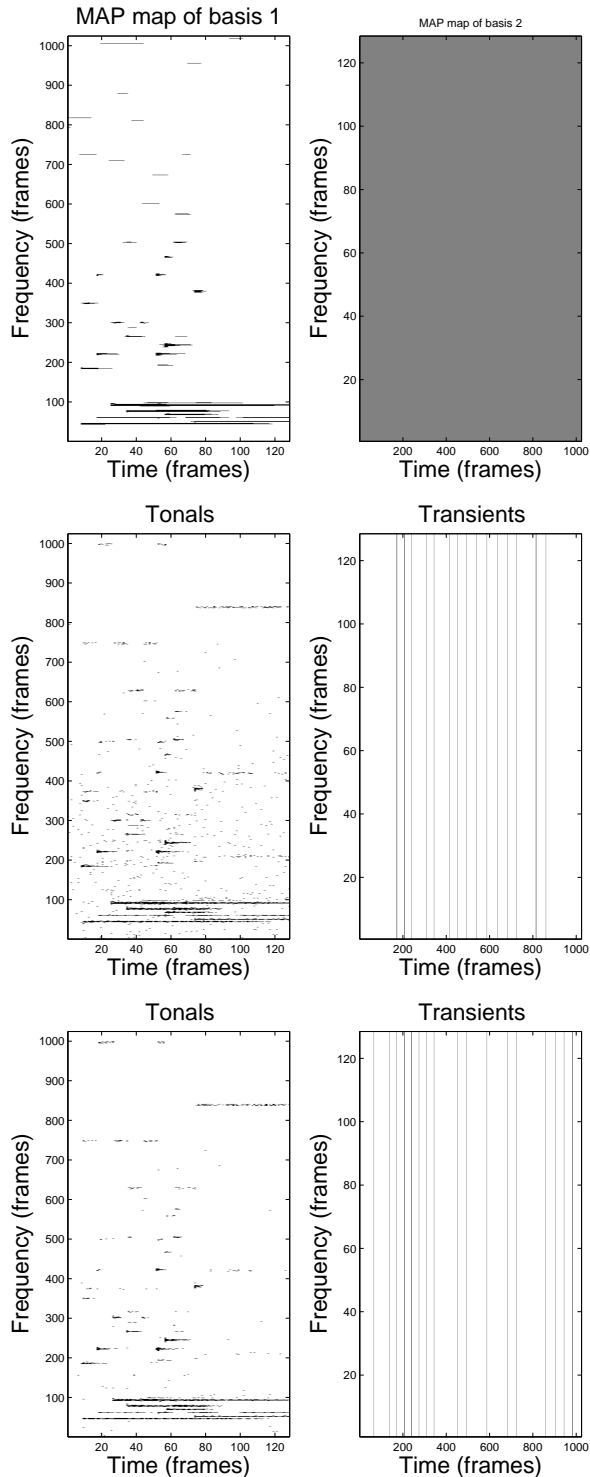


FIG. 12. Significance maps of each basis (MAP estimates) for the *Glockenspiel* excerpt, case $SNR_{in} = 10\text{dB}$. Top: approach (Févotte *et al.*, 2008); middle: proposed approach using musical priors with $p_{ton} = 0.9$ and $p_{tran} = 0.9$; bottom: proposed approach using musical priors with $p_{ton} = 0.99$ and $p_{tran} = 0.99$.

1 newly introduced musical priors. Concerning the qual-
 2 ity of denoising, all the configurations of the model we

3 propose provide results whose quality in terms of SNR re-
 4 sults outperforms or, at least, corresponds to state-of-the-
 5 art approaches. Moreover, the content of reconstructed
 6 signal is more coherent with the underlying harmony and
 7 metrical structure, and thus musically meaningful.

8 A well-structured representation may be very useful
 9 to provide access to higher level information about the
 10 audio signal, whereas relevant music content information
 11 should help providing a “good” representation. Future
 12 work will concentrate on fully integrating in the model
 13 chord and beat estimation in an interactive fashion. For
 14 instance the chromagram could be updated with the
 15 other parameters during MCMC inference in order to
 16 possibly improve the chord estimation.

17 The priors we propose have a great potential of im-
 18 provement in the future (for example, by using a time
 19 segmentation, a larger chord lexicon, using onsets com-
 20 bined with beat positions etc.). The model could also be
 21 extended so that dependencies between layers are taken
 22 into account. For this, musical information such as the
 23 fact that chord changes usually occur on beat subdivi-
 24 sions (which are related to transient locations) could be
 25 used. This should help reducing musical noise and arti-
 26 facts.

27 As far as we know, the introduction of musical pri-
 28 ors in hybrid models for sparse decomposition is novel.
 29 The use of mid-level representation of audio – such as
 30 the chromagram, as proposed in this paper – or scores, if
 31 available, could be extended to many applications such
 32 as denoising, source separation, compression, coding and
 33 many others. Usually, only physical and mathematical
 34 criteria are taken into account. We believe that the use
 35 of musical content information opens new interesting per-
 36 spectives.

37 Acknowledgment

38 The authors would like to thank C. Févotte and all
 39 the authors of (Févotte *et al.*, 2008) for providing their
 40 source code.

41 APPENDIX A: POSTERIOR DISTRIBUTIONS USED IN 42 THE GIBBS SAMPLER

43 1. Indicator variables

44 a. Tonal layer

$$\begin{aligned}
 p(\gamma_{ton,n} = 0 | \sigma_{ton,n}, \sigma, x_{ton|tran}) &= \frac{1}{1 + \tau_{ton,n}} \\
 p(\gamma_{ton,n} = 1 | \sigma_{ton,n}, \sigma, x_{ton|tran}) &= \frac{\tau_{ton,n}}{1 + \tau_{ton,n}},
 \end{aligned}
 \tag{A1}$$

with

9 3. Hyperparameters

10 a. Scale parameters of coefficients

$$\begin{aligned} \tau_{ton,n} &= \sqrt{\frac{\sigma^2}{\sigma^2 + \sigma_{ton,n}}} \exp\left(\frac{x_{ton|tran}^2 \sigma_{ton,n}}{2\sigma^2(\sigma^2 + \sigma_{ton,n})}\right) \\ &\times p\left(\frac{\gamma_{ton,n} = 1 | \gamma_{ton,-n}}{\gamma_{ton,n} = 0 | \gamma_{ton,-n}}\right). \end{aligned} \quad (A2)$$

1 The ratio $p\left(\frac{\gamma_{ton,n}=1|\gamma_{ton,-n}}{\gamma_{ton,n}=0|\gamma_{ton,-n}}\right)$ is $\frac{P_\Lambda\{\gamma_{ton,n}=1\}}{1-P_\Lambda\{\gamma_{ton,n}=1\}}$, where
 2 $P_\Lambda\{\gamma_{ton,n} = 1\}$ is defined in Eq. (9) for *Method Chord*
 3 and in Eq. (10) for *Method Chroma*.

4 b. Transient layer

$$\begin{aligned} p(\gamma_{tran,m} = 0 | \sigma_{tran,m}, \sigma, x_{tran|ton}) &= \frac{1}{1 + \tau_{tran,m}} \\ p(\gamma_{tran,m} = 1 | \sigma_{tran,m}, \sigma, x_{tran|ton}) &= \frac{\tau_{tran,m}}{1 + \tau_{tran,m}}, \end{aligned} \quad (A3)$$

5 with

$$\begin{aligned} \tau_{tran,m} &= \sqrt{\frac{\sigma^2}{\sigma^2 + \sigma_{tran,m}}} \exp\left(\frac{x_{tran|ton}^2 \sigma_{tran,m}}{2\sigma^2(\sigma^2 + \sigma_{tran,m})}\right) \\ &\times p\left(\frac{\gamma_{tran,m} = 1 | \gamma_{tran,-m}}{\gamma_{tran,m} = 0 | \gamma_{tran,-m}}\right). \end{aligned} \quad (A4)$$

6 The ratio $p\left(\frac{\gamma_{tran,m}=1|\gamma_{tran,-m}}{\gamma_{tran,m}=0|\gamma_{tran,-m}}\right)$ is $\frac{P_\Delta\{\gamma_{tran,m}=1\}}{1-P_\Delta\{\gamma_{tran,m}=1\}}$,
 7 where $P_\Delta\{\gamma_{tran,m} = 1\}$ is defined in Eq. (13).

8 2. Coefficients

$$\begin{aligned} p(\alpha_n | \gamma_{ton,n}, \sigma_{ton,n}, \sigma, x_{ton|tran}) &= (1 - \gamma_{ton,n}) \delta_0(\alpha_n) \\ &+ \gamma_{ton,n} \mathcal{N}\left(\alpha_n \left| \frac{u_n^T r \sigma_{ton,n}^2}{\sigma_{ton,n}^2 + \sigma^2}, \frac{\sigma^2 \sigma_{ton,n}^2}{\sigma^2 + \sigma_{ton,n}^2} \right.\right) \end{aligned} \quad (A5)$$

$$\begin{aligned} p(\beta_m | \gamma_{tran,m}, \sigma_{tran,m}, \sigma, x_{tran|ton}) &= (1 - \gamma_{tran,m}) \delta_0(\beta_m) \\ &+ \gamma_{tran,m} \mathcal{N}\left(\beta_m \left| \frac{v_m^T r \sigma_{tran,m}^2}{\sigma_{tran,m}^2 + \sigma^2}, \frac{\sigma^2 \sigma_{tran,m}^2}{\sigma^2 + \sigma_{tran,m}^2} \right.\right) \end{aligned} \quad (A6)$$

$$\begin{aligned} p(\sigma_{ton,n}^2 | \gamma_{ton,n}, f_{ton,n}) &= (1 - \gamma_{ton,n}) \mathcal{IG}(\sigma_{ton,n} | 1, f_{ton,n}) \\ &+ \gamma_{ton,n} \mathcal{IG}\left(\sigma_{ton,n} \left| 3/2, \frac{\alpha_{ton,n}^2}{2} + f_{ton,n} \right.\right) \end{aligned} \quad (A7)$$

$$\begin{aligned} p(\sigma_{tran,m}^2 | \gamma_{tran,m}, f_{tran,m}) &= (1 - \gamma_{tran,m}) \mathcal{IG}(\sigma_{tran,m} | 1, f_{tran,m}) \\ &+ \gamma_{tran,m} \mathcal{IG}\left(\sigma_{tran,m} \left| 3/2, \frac{\alpha_{tran,m}^2}{2} + f_{tran,m} \right.\right) \end{aligned} \quad (A8)$$

11 b. Scale parameters of frequency profiles

$$p(\lambda_{ton} | \sigma_{ton}) = \gamma \left(\lambda_{ton} \left| N, \sum_n \frac{1}{1 + \frac{q-1}{\ell_{ton}/3} \sigma_{ton,n}} \right. \right) \quad (A9)$$

$$p(\lambda_{tran} | \sigma_{tran}) = \gamma \left(\lambda_{tran} \left| N, \sum_m \frac{1}{1 + \frac{q-1}{\ell_{tran}/3} \sigma_{tran,m}} \right. \right) \quad (A10)$$

12 c. Variance of the noise

$$p(\sigma^2 | x_{ton}, x_{tran}, x) = \mathcal{IG}\left(\sigma^2 \left| \frac{N}{2}, \frac{\|x - V\alpha - U\beta\|^2}{2} \right.\right) \quad (A11)$$

- 13 1. See e.g. <https://sites.google.com/site/nips10sparsew/>.
- 14 2. Here γ is used to refer indifferently to $\gamma_{ton,n}$ or $\gamma_{tran,m}$.
- 15 3. $a \pmod b$ denotes the mathematical operator *modulo*, the
- 16 remainder when a is divided by b .
- 17 4. In general, the harmonics of harmonic music sounds do not
- 18 have frequencies that are *exact* multiples of its fundamental
- 19 frequency, but are nearly harmonically related.
- 20 5. We limit the number of considered harmonics to 6 because
- 21 many of the higher harmonics, which are theoretically whole
- 22 number multiples of the fundamental frequency, are far from
- 23 any note of the Western chromatic scale. This is especially
- 24 true for the 7th and the 11th harmonics.
- 25 6. As stressed in (Févotte *et al.*, 2008), colored or non-Gaussian
- 26 noise could also be considered as well and embedded into the
- 27 same framework, but this would lead to an increase in the
- 28 computational efficiency of the algorithm because of some
- 29 matrix inversion, which is out of the scope of this paper.
- 30 7. Neighboring chords considered here are harmonically close
- 31 triads: parallel Major/ minor (EM being confused with Em),
- 32 relative (Am being confused with CM), dominant (CM being
- 33 confused with GM) or subdominant (CM being confused
- 34 with FM).

- 1 Baraniuk, R., Flandrin, P., Janssen, A., and Michel, O. 67
2 (2001). “Measuring Time-Frequency Information Content 68
3 Using the Rényi Entropies”, Proceedings of the IEEE Trans- 69
4 actions on Information Theory **47**, 1391–1409. 70
- 5 Bello, J. and Pickens, J. (2005). “A robust mid-level represen- 71
6 tation for harmonic content in music signal”, in *Proceedings of* 72
7 *the International Symposium on Music Information Retrieval* 73
8 *(ISMIR)* (London, UK). 74
- 9 Benaroya, L., Bimbot, F., and Gribonval, R. (2006). “Audio 75
10 source separation with a single sensor”, IEEE Transactions 76
11 on Audio, Speech, and Language Processing **14**, 191–199. 77
- 12 Blumensath, T. and Davies, M. (2004). “Unsupervised learn- 78
13 ing of sparse and shift-invariant decompositions of polyphonic 79
14 music”, in *Proceedings of the IEEE International Conference* 80
15 *on Acoustics, Speech, and Signal Processings (ICASSP)*, vol- 81
16 ume 5, 497–500 (Montreal, Canada). 82
- 17 Brown, J. (1991). “Calculation of a constant Q spectral trans- 83
18 form”, Journal of the Acoustical Society of America **89**, 425– 84
19 434. 85
- 20 Casella, G. and George, E. (1992). “Explaining the Gibbs 86
21 sampler”, The American Statistician **46**, 167–174. 87
- 22 Chen, S., David L. Donoho, D., and Saunders, M. (1998). 88
23 “Atomic decomposition by basis pursuit”, SIAM Journal on 89
24 Scientific Computing **20**, 33–61. 90
- 25 Crouse, M., Nowak, R., and Baraniuk, R. (1998). “Wavelet- 91
26 based statistical signal processing using hidden markov mod- 92
27 els”, IEEE Transactions on Signal Processing **46**, 886–902. 93
- 28 Daudet, L. (2004). “Sparse and structured decompositions of 94
29 audio signals in overcomplete spaces”, in *Proceedings of the* 95
30 *International Conference on Digital Audio Effects (DAFx)*, 96
31 22–26 (Naples, Italy). 97
- 32 Daudet, L. (2006a). “A review on techniques for the ex- 98
33 traction of transients in musical signals”, in *Computer Mu- 99
34 sic Modeling and Retrieval*, volume 3902 of *Lecture Notes in* 100
35 *Computer Science*, 219–232 (Springer-Verlag Berlin Heidel- 101
36 berg). 102
- 37 Daudet, L. (2006b). “Sparse and structured decompositions 103
38 of signals with the molecular matching pursuit”, IEEE Trans- 104
39 actions on Audio, Speech, and Language Processing **14**, 1808– 105
40 1816. 106
- 41 Daudet, L. (2010). “Audio sparse decompositions in paral- 107
42 lel, Let the greed be shared!”, IEEE Transactions on Signal- 108
43 Processing **27**, 90–96. 109
- 44 Daudet, L., Molla, S., and Torrésani, B. (2004). “Towards 110
45 a hybrid audio coder”, in *Proceedings of the International* 111
46 *Conference Wavelet Analysis Its Applications (WAA)*, 13–24 112
47 (Chongqing, Chine). 113
- 48 Daudet, L. and Torrésani, B. (2002). “Hybrid representations 114
49 for audiophonic signal encoding”, Signal Processing Journal 115
50 **82**, 1595–1617. 116
- 51 Daudet, L. and Torrésani, B. (2006). *Signal Processing Meth-* 117
52 *ods for Music Transcription*, chapter “Sparse Adaptive Rep- 118
53 resentations for Musical Signals”, 65–98 (Springer US). 119
- 54 Davies, M. and Daudet, L. (2006). “Sparse audio representa- 120
55 tions using the MCLT”, Signal Processing Journal **86**, 457– 121
56 470. 122
- 57 Davies, M. and Plumbley, M. (2007). “Context-dependent 123
58 beat tracking of musical audio”, IEEE Transactions on Audio, 124
59 Speech, and Language Processing **15**, 1009–1020. 125
- 60 Dixon, S. (2007). “Evaluation of audio beat tracking system 126
61 beatroot”, Journal of New Music Research **36**, 39–51. 127
- 62 Emiya, V., Vincent, E., Harlander, N., and Hohmann, V. 128
63 (2010). “Subjective and objective quality assessment of audio 129
64 source separation”, Rapport de recherche RR-7297, INRIA. 130
- 65 Févotte, C., Daudet, L., Godsill, S., and Torresani, B. 131
66 (2006). “Sparse regression with structured priors: Applica- 132
tion to audio denoising”, in *Proceedings of the IEEE Interna-*
tional Conference on Acoustics, Speech, and Signal Process-
ings (ICASSP), volume 3, III (Toulouse, France).
Févotte, C. and Godsill, S. (2006). “A Bayesian approach
for blind separation of sparse sources”, IEEE Transactions on
Audio, Speech, and Language Processing **14**, 2174–2188.
Févotte, C. and Godsill, S. (2006). “Sparse linear regression
in unions of bases via Bayesian variable selection”, IEEE Sig-
nal Processing Letters **13**, 441–444.
Févotte, C., Torrésani, B., Daudet, L., and Godsill, S. (2008).
“Sparse Linear Regression With Structured Priors and Appli-
cation to Denoising of Musical Audio”, IEEE Transactions on
Audio, Speech, and Language Processing **16**, 174–185.
Figueiredo, M. (2003). “Adaptive Sparseness for Supervised
Learning”, IEEE Transactions on Pattern Analysis and Ma-
chine Intelligence **25**, 1150–1159.
Fujishima, T. (1999). “Real-time chord recognition of musical
sound: a system using common lisp music”, in *Proceedings of*
the International Computer Music Conference (ICMC), 464–
467 (Bejing, China).
Geman, S. and Geman, D. (1984). “Stochastic relaxation,
Gibbs distributions, and the Bayesian restoration of images”,
IEEE Transactions on Pattern Analysis and Machine Intelli-
gence **6**, 721–741.
George, E. and McCulloch, R. (1997). “Approaches for
Bayesian variable selection”, *Statistica Sinica* **7**, 339–373.
Geweke, J. (1996). “Variable Selection and Model Compari-
son in Regression”, *Bayesian Statistics* **5**, 609–620.
Hamdy, K., Ali, M., and Tewfi, A. (1996). “Low bit rate high
quality audio coding with combined harmonic and wavelet
representations”, in *Proceedings of the IEEE International*
Conference on Acoustics, Speech, and Signal Processings
(ICASSP), volume 2, 1045–1048 (Atlanta, Georgia, USA).
Harte, C. and Sandler, M. (2005). “Automatic chord iden-
tification using a quantised chromagram”, in *Proceedings of*
the Convention Audio Engineering Society (AES) (Barcelona,
Spain).
Jaillet, F. and Torrésani, B. (2004). “Time-frequency jigsaw
puzzle- Adaptive multiwindow and multilayered gabor expan-
sions”, Technical report, LATP and Université de Provence.
Klapuri, A., Eronen, A., and Astola, J. (2006). “Analysis of
the meter of acoustic musical signals”, IEEE Transactions on
Audio, Speech, and Language Processing **14**, 342–355.
Kowalski, M. (2009). “Sparse regression using mixed norms”,
Applied and Computational Harmonic Analysis **27**, 303–324.
Kowalski, M. and Torrésani, B. (2008). “Random models for
sparse signals expansion on unions of bases with application
to audio signals”, IEEE Transactions on Signal Processing
56, 3468–3481.
Liuni, M., Roebel, A., Romito, M., and Rodet, X. (2011).
“An entropy Based method for Local time-adaptation of the
spectrogram”, in *Computer Music Modeling and Retrieval*,
Lecture Notes in Computer Science, 60–75 (Springer-Verlag
Berlin Heidelberg).
Low, F. (1985). “Complete sets of wave packets”, C. DeTar
(editor), *A Passion for Physics - Essay in Honor of Geoffrey*
Chew, World Scientific 17–22.
Mallat, S. (1998). *A Wavelet Tour of Signal Processing*, 3rd
edition (Academic Press).
Mallat, S. and Zhang, Z. (1993). “Matching Pursuit With
Time-Frequency Dictionaries”, IEEE Transactions on Signal
Processing **41**, 3397–3415.
Malvar, H. (1990). “Lapped transforms for efficient trans-
form/subband coding”, IEEE Transactions on Acoustics,
Speech, and Signal Processing **38**, 969–978.
Molla, S. and Torrésani, B. (2004). “Determining local tran-

- 1 sientness of audio signals”, *IEEE Signal Processing Letters* 67
2 **11**, 625–628. 68
- 3 Molla, S. and Torésani, B. (2005). “An hybrid audio scheme 69
4 using hidden Markov models of waveforms”, *Applied and* 70
5 *Computational Harmonic Analysis* **18**, 137–166. 71
- 6 Noland, K. and M., S. (2006). “Key estimation using a hid- 72
7 den Markov model”, in *Proceedings of the International Sym- 73*
8 *posium on Music Information Retrieval (ISMIR)* (Victoria, 74
9 BC, Canada). 75
- 10 Papadopoulos, H. and Kowalski, M. (2011). “Sparse Signal 76
11 Decomposition on Hybrid Dictionaries Using Musical Priors”, in 77
12 *Proceedings of the International Symposium on Music In- 78*
13 *formation Retrieval (ISMIR)* (Miami, USA). 79
- 14 Papadopoulos, H. and Peeters, G. (2007). “Large-Scale Study 80
15 of Chord Estimation Algorithms Based on Chroma Represent- 81
16 tation and HMM”, in *Proceedings of the International Work- 82*
17 *shop on Content-Based Multimedia Indexing (CBMI)*, 53–60 83
18 (Bordeaux, France). 84
- 19 Papadopoulos, H. and Peeters, G. (2011). “Joint estima-
20 tion of chords and downbeats”, *IEEE Transactions on Audio,*
21 *Speech, and Language Processing* **19**, 138–152.
- 22 Pati, Y., Rezaifar, R., and Krishnaprasad, P. (1993). “Or-
23 thogonal matching pursuit: Recursive function approximation
24 with applications to wavelet decomposition”, in *Proceedings*
25 *of the 27th Annual Asilomar Conference on Signals, Systems,*
26 *and Computers*, 40–44 (Pacific Grove, CA , USA).
- 27 Peeters, G. (2006). “Musical key estimation of audio signal
28 based on HMM modeling of chroma vectors”, in *Proceed-*
29 *ings of the International Conference on Digital Audio Effects*
30 *(DAFx)*, 127–131 (Montreal, Canada).
- 31 Peeters, G. and Papadopoulos, H. (2011). “Simultaneous
32 beat and downbeat-tracking using a probabilistic framework:
33 theory and large-scale evaluation”, *IEEE Transactions on Au-*
34 *dio, Speech, and Language Processing* **19**, 1754–1769.
- 35 Plumbley, M., Blumensath, T., Daudet, L., Gribonval, R.,
36 and Davies, M. (2010). “Sparse Representations in Audio
37 and Music: from Coding to Source Separation”, *Proceedings*
38 *of the IEEE* **98**, 995–1005.
- 39 Ravelli, E., Richard, G., and Daudet, L. (2008). “Union of
40 MDCT Bases for Audio Coding”, *IEEE Transactions on Au-*
41 *dio, Speech, and Language Processing* **16**, 1361–1372.
- 42 Ravelli, E., Richard, G., and Daudet, L. (2010). “Audio sig-
43 nal representations for indexing in the transform domain”,
44 *IEEE Transactions on Audio, Speech, and Language Process-*
45 *ing* **18**, 434–446.
- 46 Rényi, A. (1961). “On measures of entropy and information”,
47 in *Proceedings of the fourth Berkeley Symposium on Mathe-*
48 *matics of Statistics and Probability*, volume 41, 547–561 (Uni-
49 versity of Calif. Press).
- 50 Rohdenburg, T., Hohmann, V., , and Kollmeier, B. (2005).
51 “Objective perceptual quality measures for the evaluation
52 of noise reduction schemes”, in *Proceedings of the 9th In-*
53 *ternational Workshop on Acoustic Echo and Noise Control*
54 *(IWAENC)*, 169–172 (Eindhoven, The Netherlands).
- 55 Scheirer, E. (1998). “Tempo and beat analysis of acoustic
56 musical signals”, *Journal of the Acoustical Society of America*
57 **103**, 588–601.
- 58 Sheh, A. and Ellis, D. (2003). “Chord segmentation and
59 recognition using EM-trained HMM”, in *Proceedings of the*
60 *International Symposium on Music Information Retrieval*
61 *(ISMIR)* (Baltimore, MD, USA).
- 62 Tibshirani, R. (1996). “Regression shrinkage and selection
63 via the lasso”, *Journal of the Royal Statistical Society Serie*
64 *B (Statistical Methodology)* **58**, 267–288.
- 65 Verma, T. and Meng, T. (2000). “Extending Spectral Model-
66 ing Synthesis with Transient Modeling Synthesis”, *Computer*
Music Journal **24**, 47–59.
- Vincent, E., Jafari, M., and Plumbley, M. D. (2006). “Prelim-
inary guidelines for subjective evaluation of audio source sep-
aration algorithms”, in *Proceedings of the UK ICA Research*
Network Workshop, 93–96 (Southampton, Royaume-Uni).
- Wakefield, G. (1999). “Mathematical representation of joint
time-chroma distribution”, in *Proceedings of the SPIE Con-*
ference on Advanced Signal Processing Algorithms, Architec-
ture and Implementation (ASPAAI), 637–645 (Denver, Col-
orado, USA).
- Wolfe, P., Godsill, S., and Ng, W.-J. (2004). “Bayesian vari-
able selection and regularization for time-frequency surface
estimation”, *Journal of the Royal Statistical Society Serie B*
(Statistical Methodology) **66**, 575–589.
- Yeh, C., Roebel, A., and Rodet, X. (2010). “Multiple Fun-
damental Frequency Estimation and Polyphony Inference of
Polyphonic Music Signals”, *IEEE Transactions on Audio,*
Speech, and Language Processing **18**, 1116–1126.