



HAL
open science

How far can the resonance frequencies give informations about the playing frequencies? The trumpet example

Pauline Eveno, Benoît Kieffer, Joël Gilbert, Jean-François Petiot, René Caussé

► **To cite this version:**

Pauline Eveno, Benoît Kieffer, Joël Gilbert, Jean-François Petiot, René Caussé. How far can the resonance frequencies give informations about the playing frequencies? The trumpet example. Acoustics 2012, Apr 2012, Nantes, France. <hal-00810906>

HAL Id: hal-00810906

<https://hal.science/hal-00810906v1>

Submitted on 23 Apr 2012

HAL is a multi-disciplinary open access archive for the deposit and dissemination of scientific research documents, whether they are published or not. The documents may come from teaching and research institutions in France or abroad, or from public or private research centers.

L'archive ouverte pluridisciplinaire **HAL**, est destinée au dépôt et à la diffusion de documents scientifiques de niveau recherche, publiés ou non, émanant des établissements d'enseignement et de recherche français ou étrangers, des laboratoires publics ou privés.



HAL Authorization



ACOUSTICS 2012

How far can the resonance frequencies give informations about the playing frequencies? The trumpet example

P. Eveno^a, B. Kieffer^a, J. Gilbert^b, J.-F. Petiot^c and R. Caussé^a

^aIRCAM, 1 place Igor Stravinsky, 75004 Paris, France

^bLaboratoire d'acoustique de l'université du Maine, Bât. IAM - UFR Sciences Avenue Olivier Messiaen 72085 Le Mans Cedex 9

^cEcole Centrale de Nantes, 1 rue de la noe, BP 92101, 44321 Nantes, France
pauline.eveno@ircam.fr

Measurements and calculations of the input impedance of wind musical instruments are now well mastered. The purpose of this work is to study experimentally how far the resonance frequencies of brass instruments, taken from their input impedance, are able to give informations about the playing frequencies. Three different trumpets, obtained by changing only the leadpipe of the same instrument, were considered for the experiment. After a measurement of the input impedance of these trumpets, four musicians were asked to play the five first playable notes (regimes 2 to 6), for four different fingerings. This exercise was done for three nuances and was repeated three times. Finally, these $3 * 4 * 5 * 4 * 3 * 3 = 2160$ notes allow us to make a quantitative assessment of the relations between the resonance frequencies and the playing frequencies. Results show first, a limited influence of the musician on the overall intonation of the instrument. Second, the pitch of the notes does not vary much with the nuances. Finally, the results confirm the fact that variations of the resonance frequencies lead to variations of the playing frequencies of the same order.

1 Introduction

Measurements and calculations of the input impedance of wind musical instruments are now well mastered [1, 2, 3, 4]. As part of a project aiming at helping instruments makers to design and characterize their musical instrument, this work focuses on how the resonance frequencies taken from the input impedance can be related to the playing frequencies. Indeed, an instrument maker is first interested by the overall tone of his/her instruments in playing situation and thus needs an indicator which is able to predict their intonation.

The purpose of this work is to study experimentally how far the resonance frequencies of a trumpet, taken from the input impedance of the instrument, are able to give informations about the playing frequencies. This will be done by recording a large number of notes played by several musicians on three trumpets.

Section 2 presents some basic informations about the acoustics of the trumpet. Then, section 3 explains the recording of the musicians playing the different trumpets and the analysis of the data. From these measurements, an analysis of the musicians behaviour is done on section 4. In section 5 the playing frequencies of the recorded notes are compared to the resonance frequencies taken from the input impedance of the trumpets. Then, in order to minimize the influence of the musician on the results section, 6 focuses on the differences of frequencies instead of the frequencies themselves.

2 Trumpets resonances and playing frequencies: Preliminary discussion

2.1 Trumpet geometry

The canal of the trumpet can be separated in two parts: first, a long central cylindrical part on which are connected cylindrical bypasses brought in/out working order by valves and second, a flared part, the horn. Then, the mouthpiece is an independant piece which fits into the instrument input and whose role is to fulfil the adaptation between the musician's lips and the instrument. This mouthpiece can be represented in broad outline by two cones, the first with a strong conicity closes until the throat where the radius is minimum, the second of small conicity opens slightly in order to fit into the trumpet input, on a piece called the leadpipe (see figure 1) which is a part quite influential on the acoustic behaviour of the instrument [5]. Its internal rotation-symmetrical geometry has a priori a complex shape (neither cylindrical nor conical).



Figure 1: Photo of a trumpet with the “100” fingering (1 for the first valve pushed in and 0 for the others which are not depressed). The position of the leadpipe is shown by a dashed line.

2.2 Input impedance and playable notes

The acoustic response of an instrument at different frequencies can be characterized by its input impedance (impedance computed or measured at the input of the complete instrument, that is to say at the input plane of the mouthpiece), ratio of the acoustic pressure amplitude to the acoustic flow amplitude. A typical input impedance of brass instrument (see figure 2) shows a large number of resonance frequencies, where the impedance amplitude is maximum and the phase is passing by zero. Each of these resonance frequencies is associated to a note (or oscillation regime) played by the musician. In the example of figure 2, corresponding to the basic fingering of a Bb trumpet where none of the three valves are in action, the eight first resonances correspond to the series of concert notes Bb2, Bb3, F4, Bb4, D4, F5, Ab5, Bb5 (the harmonic series of Bb). The three valves offer thus 8 combinations which allow the construction of the whole chromatic range. Indeed the activation of a valve produces an elongation of the air column. The resonance frequencies of the instrument are thus dropped of a value that depends on the added length. The first valve brings down the frequencies of a tone, the second of a semi-tone and the last one of one and a half tone. In the rest of the article, a pushed in valve will be noted 1 and a valve not activated will be 0. In this way, the fingering of the trumpet in figure 1 can be written as “100”.

A first approximation of the intonation of the instrument can be done by comparing the resonance frequencies to their corresponding notes in the equally-tempered scale of A 440 as it is shown in figure 3 for one of the three trumpets used in

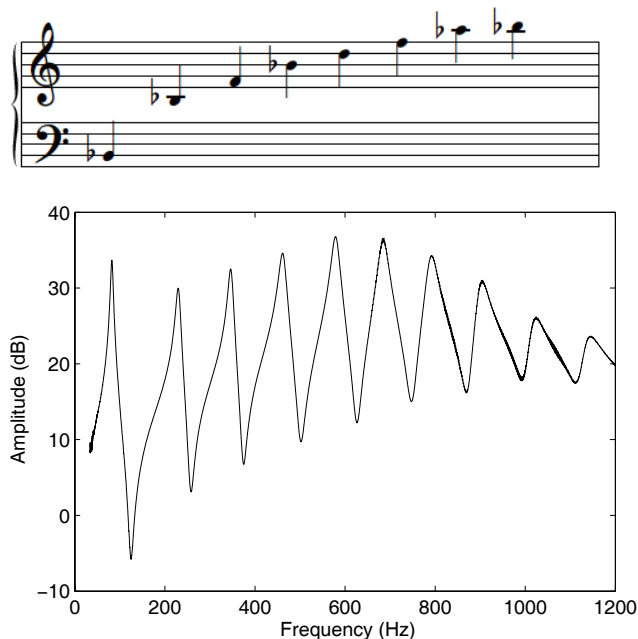


Figure 2: Measurement of the input impedance amplitude of a trumpet (bottom) with the notes corresponding to each impedance peaks (top).

this study. This diagram shows the increasing inharmonicity with the length of the cylindrical part. Indeed the 000 fingering, when the air column is the shortest, is close to zero in cents whereas the 111 fingering which gives the longest air column gives also resonance frequencies which are far from the notes of the scale. Thus, once the geometry of the instrument is fixed, the art of the craftsman consists in choosing the three bypasses lengths in order to make trumpet as in tune as possible.

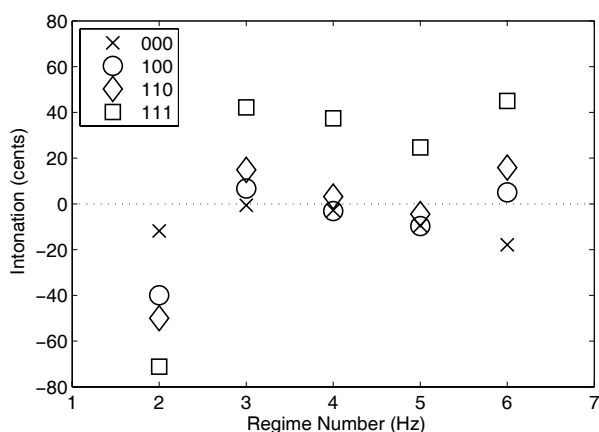


Figure 3: Intonation of a trumpet in cents, realized by calculating the difference between each resonance frequency of the trumpet input impedance for the four fingerings and its corresponding note in the equally-tempered scale of A 440.

However, the playing frequencies are not exactly equal to the resonance frequencies. The difference results from the coupling between the vibrating lips of the musician and the instrument. The musician can thus choose one note from the harmonic series by making his/her lips vibrate at the fre-

quency of the chosen note. Furthermore, a wind instrument is not an instrument with a fixed sound, that is to say the musician can modify the pitch and the timbre of the played note by controlling his/her embouchure. The term embouchure means the capacity of the musician to control the mechanical parameters of his/her vibrating lips by changing his/her facial musculature and the bearing force of the lips on the mouthpiece. It also includes his/her ability to command the air flow between his lips.

3 Set-Up and Data Analysis

3.1 Set-Up

A parametrised leadpipe, made of four different interchangeable parts, was designed [6, 7]. Four parts with various radii values have been manufactured with a numerically controlled turning machine. One letter has been given for each part of the leadpipe, corresponding to its dimensions. Thus, using the same trumpet (Bach model Vernon, bell 43) and the parametrised leadpipe, different instruments with small different acoustical behaviour can be designed. Three leadpipes were considered for the study: two of the manufactured leadpipes (DKNR and CHMQ) and a leadpipe originally provided with the trumpet, called NORM as “normal leadpipe”.

Then the input impedances of these trumpets were measured for four different fingerings: 000, 100, 110 and 111. In the trumpet, contrary to the trombone, the first regime is not played. Regimes 2 to 6 are normally played by musicians for fingerings 000 and 100. In this part, notes will be expressed as written notes for the trumpet and no as concert pitch. For the 110 fingering, musicians play notes from the second regime to the fifth and the sixth is generally not used since the E5 note can be played with the fifth regime of 000 fingering. As for the 111 fingering, only the regimes 2 and 3 are usually played. Regimes 4, 5 and 6 are an alternative way to play Gb4, Bb4 and Db5, notes for which musicians usually use the third regime of 010 fingering (Gb4), the fourth regime of 100 fingering (Bb4) and the fifth regime of 110 fingering (Db5). These extreme fingerings are chosen in order to study the whole range of trumpet frequencies, from the lowest pitch to the highest. Furthermore, even if several regimes are almost never used by the musicians, it is interesting to record them in this study. Indeed, trumpet players are not used to play these notes so there is no “learning effect” which means that they are more likely to play without focusing on the intonation.

Four musicians were asked to play the three trumpets for recording the sounds. After a short period of warming-up the instrument, the trumpet player had to play the five first playable notes (regimes 2 to 6) by saying the name of the note before playing in order to “forget” the pitch of the previous note. Indeed, the musicians were asked to play the note with the easiest emission, without focusing on the intonation. This recording was done for three nuances: first mezzo forte, then piano and finally forte in order to study the influence of the nuance on the playing frequencies. Then, the trumpet player had to move to the next fingering with the same protocole and so on for the four fingerings and the three trumpets. Then, they had to repeat the whole exercise three times in order to test their repeatability. Finally, 4 trumpet players times 3

trumpets times 4 fingerings times 5 regimes times 3 nuances times 3 attempts gives 2160 notes to analyze.

3.2 Data Analysis

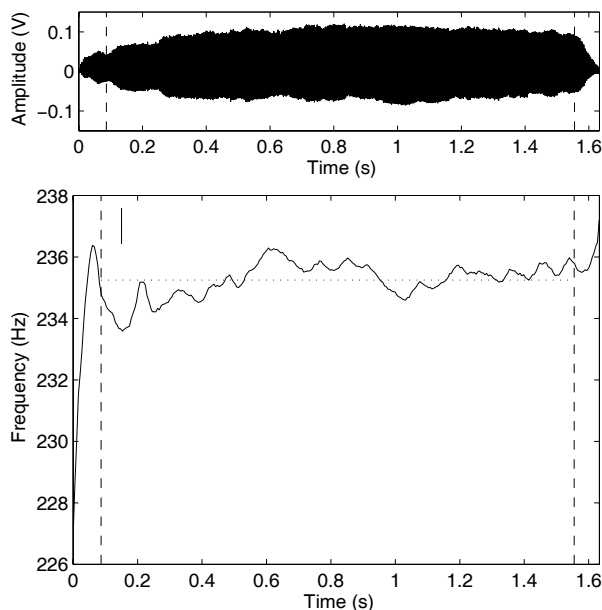


Figure 4: Waveform (top) and evolution of the frequency (bottom) of the Bb2 played by a musician with the basic fingering 000. Dashed lines separate on the left the striking up and on the right the break from the rest of the “permanent” signal. The dotted line represents the mean value and the error bar the standard deviation of the frequency during the permanent signal.

The musician cannot play a steady note and is oscillating around one frequency. This fluctuating playing frequency can be observed as a function of time thanks to YIN [8], a fundamental frequency estimator for speech and music. Figure 4 shows an example of the frequency evolution of one note, concert Bb3, played by a musician with the basic fingering (000) at mezzo forte. At the beginning, the frequency rapidly increases: this is a typical striking up. The same effect is happening at the end: the musician has run out of air so that the pitch rises. Between the striking up and the break, there is a “permanent” part where the frequency is fluctuating of a few hertz around an average value. Thus, from a measured signal like the one in figure 4, what we call, in this paper, the playing frequency will be determined as the mean of the instantaneous frequency during the time t of the permanent part and the standard deviation is calculated in order to estimate the “precision” of the trumpet player.

The measurements of the trumpets input impedances and the recording with musicians have been realized at different temperatures. Indeed, the input impedance was measured at 23°C whereas notes were played at around 28.5°C (estimation between the room temperature and the musician’s body temperature as proposed in [9]). Consequently, to do a reliable comparison, resonance frequencies need to be moved forward of the equivalent temperature shift. Since the resonances frequencies of both cones and cylinders are proportional to the sound velocity, which can be written as $c = 331.45 \sqrt{T/T_0}$ with T the temperature in Kelvin and

$T_0 = 273.16\text{K}$, it can be considered that resonance frequencies of a trumpet are proportional to the square root of the temperature expressed in Kelvin. Consequently, resonance frequencies from the measured input impedances are increased by 16 cents which is the equivalent of 5.5°C in order to be at the same level of temperature as the playing frequencies.

4 Musicians behaviours

In order to study the behaviour of each musician, it is possible to represent his playing, characterized here only by the pitch of the notes he plays, by a boxplot. A boxplot is a convenient way of graphically depicting groups of numerical data through their five-number summaries: the smallest observation (sample minimum), lower quartile (25th percentile, bottom of the box), median, upper quartile (75th percentile, top of the box), and largest observation (sample maximum).

One boxplot per nuance allows one’s to study the influence of the nuance on the playing frequencies. The second regime (first note played in the harmonic serie) is isolated from the boxplot since the playing frequencies for this regime are far from the resonance frequencies, that will be explained later on section 5. The boxplots are constructed from the difference between each playing frequency and its respective resonance frequency in cents. In each boxplot of figure 5, plotted here for one of the four trumpet players, there are 144 notes which represent 3 trumpets * 4 fingerings * 4 regimes (3 to 6) * 3 attempts.

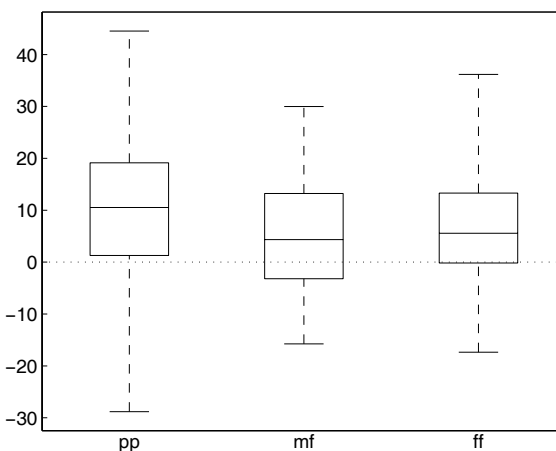


Figure 5: Boxplots representing the statistics of one trumpet player for the three nuances.

These boxplots show that globally the nuance does not have a strong influence on the playing frequencies. Nevertheless, and surprisingly, the trumpet player plays with a higher pitch at the piano nuance than at mezzo forte or forte. The same conclusion can be drawn for the three other musicians. It is thus possible for the rest of this study to merge the results for the three nuances and therefore to analyze the playing frequencies regardless of nuances. The four trumpet players have a similar behaviour as they all play in the order of 7 to 12 cents above resonance frequencies. Consequently there is no need to consider that each musician has a personal embouchure that can influence the playing frequencies in a different way.

5 Playing frequencies Vs Resonance frequencies

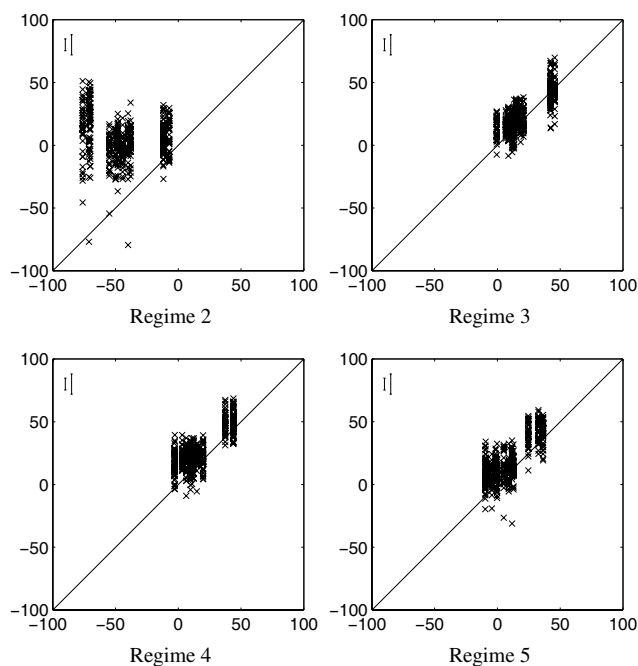


Figure 6: Playing frequencies as function of resonance frequencies, given in cents (taking the 12 equal temperament tuned relative to A 440 as a reference) for all the notes.

Figure 6 presents the playing frequencies as functions of the resonance frequencies. Both of these frequencies are expressed as cents taking the equally-tempered scale of A 440 as a reference. In this figure, and the figures thereafter, there are two error bars in the upper left-hand corner. The error bar on the left represents the average standard deviation of a note. For example, a musician who plays a note at a frequency f_0 will fluctuate between $f_0 - \sigma$ and $f_0 + \sigma$. This error bar thus stands for the mean of the σ for all the musicians on all their played notes (540 notes for each musician in total). The error bar on the right represents the average repeatability of the trumpet players. Indeed, each musician will repeat 9 times the same note (3 nuances * 3 attempts). The standard deviation is thus calculated on these 9 notes and then, the mean of these standard deviations is calculated on all the notes played by all the musicians (it is in fact a mean on 240 standard deviations).

In this figure there are 12 columns which represent all the combinations of the 4 fingerings on the 3 trumpets. In each column there are 36 points which represent the notes played 3 times by the 4 musicians for the 3 nuances. As it was said in the previous sections, the second regime is the most shifted from the resonance frequencies. Indeed the resonance frequencies of this regime are lower than the played notes, what could be explained by a transfer of energy from higher modes, as first explained by Wogram [10] and took up by Pratt and Bowsher [11]. Nevertheless, this discrepancy occurs especially for long portions of cylinder, as for the 111 fingering, where the inharmonicity is high, as previously shown in figure 3. Notes played with this fingering are thus located in the three columns the most on the left. Obviously this fingering is practically never used. On the other hand, for short tubes,

as for the 000 fingering, the playing frequencies are quite close to the resonance frequencies. It is indeed the case for the three columns the most on the right. Finally, except for the second regime, it can be considered that the playing frequencies are almost equal to their corresponding resonance frequencies.

6 Frequencies variations

In order to have a less impact of the musician's behaviour, it is interesting to focus on the differences of frequencies instead of the frequencies themselves. The goal is now to answer to the question: to what extent the variations of the resonance frequencies can give informations about the variations of playing frequencies? For ease of reading, the abbreviation dFres will be used to designate the difference between two resonance frequencies and dFplay for the difference between two playing frequencies.

For calculating differences, a reference is needed. Several can be chosen, according to what kind of variations needs to be studied. In order to observe small differences on geometries, the NORM trumpet is taken as the reference. In this part, all the notes played with the NORM trumpet are taken as a reference. The differences are thus calculated between the playing frequency of each note (trumpet i, fingering j, regime k, attempt l) and the playing frequency of the respective note (fingering j, regime k, attempt l) played with the trumpet NORM. The same protocol is applied to the resonance frequencies.

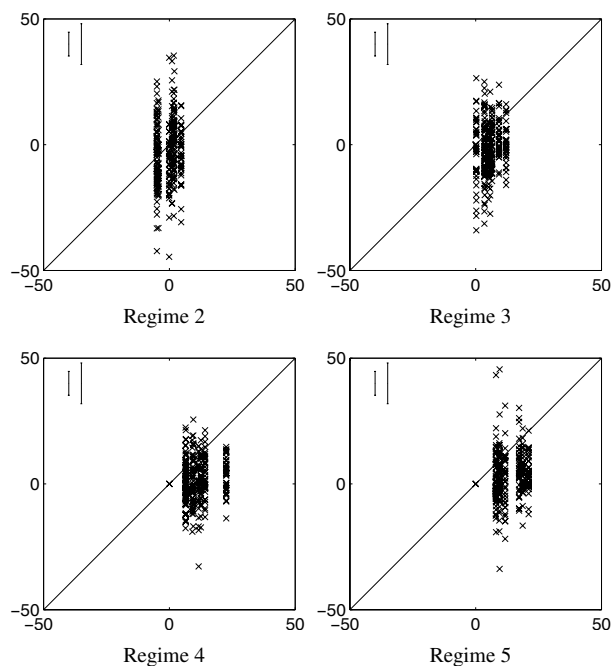


Figure 7: dFplay as a function of dFres, in cents, with the NORM trumpet as the reference.

Each plot of figure 7 is composed of 8 columns, the four fingerings of the trumpets CHMQ and DKNR, since each fingering actually leads to a different trumpet. In each column there are 36 points (4 trumpet players * 3 nuances * 3 attempts). This figure shows that the differences of playing frequencies are centred around the line of equation $dFplay = dFres$. Only the second regime is more spread out

but the distance of the points the furthest from this line is in the order of magnitude of the musicians repeatability error. Consequently, it can be considered that variations of the resonance frequencies lead to variations of the playing frequencies of the same order. This is an interesting case for the instrument making since craftsmen often work on small changes of geometry. Consequently, by measuring the variation of the input impedance of their instrument before and after a modification the craftsman will be able to quantify the variation of the playing frequencies.

7 Conclusion

This study realized with four trumpet players on three trumpets for a large number of notes allows making a quantitative assessment of the relations between the resonance frequencies and the playing frequencies. It was already known that playing frequencies were close to resonance frequencies but no detailed work had been previously carried out to quantify it.

For relatively small geometry variations, the differences on the resonance frequencies can predict the differences produced on the playing frequencies: it is a good objective indicator as it does not take into account the influence of the musician. That is interesting for craftsmen who need to make instruments playable by every musician and who often work by doing small modifications of their instrument in order to make it in tune.

Moreover this study gives an order of magnitude of the musicians variability which confirms that the resonance frequency is a sufficient indicator of the playing frequency and that there is no need to search for a more precise one. Indeed the variability is quite high and each musician has his own way of playing and his own embouchure, thus it will be zealous to try finding a more accurate predictor.

Acknowledgments

This research was funded by the French National Research Agency ANR within the PAFI project (Plateforme d'Aide à la Fabrication Instrumentale in French). The authors would like to thank all the trumpet players who participated in this study as well as J.-P. Dalmont for interesting discussions.

References

- [1] J. Backus, "Input impedance curves for the brass instruments", *J. Acoust. Soc. Am.* **60**(2) 470-480 (1976)
- [2] R. Caussé, J. Kergomard, X. Lurton, "Input impedance of brass musical instruments - Comparison between experiment and numerical models", *J. Acoust. Soc. Am.* **75**(1) 241-245 (1984)
- [3] P. Eveno, J.-P. Dalmont, R. Caussé, J. Gilbert, "Wave propagation and radiation in a horn: comparisons between models and measurements", *Acta Acustica united with Acustica* **98**(1), 158-165 (2012)
- [4] J.-P. Dalmont, "Acoustic impedance measurement", *Journal of Sound and Vibration* **243**(3), 427-459 (2001)
- [5] M. Bertsch, "Bridging instrument control aspects of brass instruments with physics-based parameters", *Proceedings of SMAC 2003, Stockholm, Sweden*, 193-196
- [6] E. Poirson, *Prise en compte des perceptions de l'utilisateur en conception de produit. Application aux instruments de musique de type cuivre.*, Thèse de Doctorat, Ecole Centrale de Nantes (2005)
- [7] J.-F. Petiot, E. Poirson, J. Gilbert, "Study of the relations between trumpets' sounds characteristics and the input impedance", *Proceedings of Forum Acusticum 2005, Budapest, Hungary*, 747-752
- [8] A. de Cheveigné, H. Kawahara, "YIN, a fundamental frequency estimator for speech and music", *J. Acoust. Soc. Am.* **111**(4), 1917-1930 (2002)
- [9] J. Gilbert, L.M. Lebos Ruiz, S. Gougeon, "Influence de la température sur la justesse d'un instrument à vent", *Proceedings of Congrès Français d'Acoustique 2006, Tours*
- [10] K. Wogram, *Ein Beitrag zur Ermittlung der Stimmung von Blechblasinstrumenten*, Technische Universität Carolo Wilhelmina, Braunschweig (1972)
- [11] R.L. Pratt and J.M. Bowsher, "The objective assessment of trombone quality", *Journal of Sound and Vibration* **65**(4), 521-547 (1979)