



**HAL**  
open science

## ILEAL CROHN'S DISEASE: MRI WITH ENDOSCOPIC CORRELATION

José C. Gallego, Ana I. Echarri, Ana Porta, Virginia Ollero

► **To cite this version:**

José C. Gallego, Ana I. Echarri, Ana Porta, Virginia Ollero. ILEAL CROHN'S DISEASE: MRI WITH ENDOSCOPIC CORRELATION. *European Journal of Radiology*, 2011, 80 (2), 10.1016/j.ejrad.2010.05.042 . hal-00808141

**HAL Id: hal-00808141**

**<https://hal.science/hal-00808141>**

Submitted on 5 Apr 2013

**HAL** is a multi-disciplinary open access archive for the deposit and dissemination of scientific research documents, whether they are published or not. The documents may come from teaching and research institutions in France or abroad, or from public or private research centers.

L'archive ouverte pluridisciplinaire **HAL**, est destinée au dépôt et à la diffusion de documents scientifiques de niveau recherche, publiés ou non, émanant des établissements d'enseignement et de recherche français ou étrangers, des laboratoires publics ou privés.

Manuscript Number:

Title: ILEAL CROHN'S DISEASE: MRI WITH ENDOSCOPIC CORRELATION

Article Type: Original Research Article

Keywords: Crohn's disease, Gastrointestinal endoscopy, Magnetic Resonance Imaging, Small bowel.

Corresponding Author: Dr Jose C. Gallego, M.D.

Corresponding Author's Institution: Hospital A. Marcide

First Author: Jose C. Gallego, M.D.

Order of Authors: Jose C. Gallego, M.D.; Ana I Echarri, M.D.; Ana Porta, M.D.; Virginia Ollero, M.D.

Abstract: Purpose: To evaluate activity staging of Crohn's disease (CD) measured with MR-enterography using ileoscopy as reference standard.

Materials and methods: A prospective study was made of 61 patients with CD. All patients underwent MR-enterography and ileoscopy. MRI activity was measured by means of an ad hoc developed score, as well as by analysis of the imaging findings, and was compared with the SES-CD score obtained via ileoscopy. Examinations were performed using a 1.0 Tesla scanner.

Results: MRI score discriminates between active and inactive disease with an area under the ROC curve of 0.941. Overall correlation with the standard reference SES-CD score was moderate to strong (Spearman's  $r=0.62$   $p<0.001$ ).

Agreement between both methods in staging patients with ileal CD as inactive, mild or moderate to severe was good (Cohen's  $\kappa=0.60$ ). Differences in means of the MRI activity scores of the three groups showed statistical significance ( $p<0.01$ ).

Conclusions: The MRI score is a reliable predictor of activity in ileal CD and can stage patients in a way comparable to endoscopy. 1.0 Tesla scans are valid for performing radiological evaluation of ileal Crohn's disease.

Dr. J.C. Gallego.  
Department of Radiology  
Hospital A. Marcide  
Ferrol  
Spain

Ferrol, 3 Apr. 2010

Dear Editor:

The original paper "ILEAL CROHN'S DISEASE: MRI WITH ENDOSCOPIC CORRELATION" is submitted to be considered for publication in your journal "European Journal of Radiology".

The paper has not been published and is not being submitted to any other journal.

All authors have participated sufficiently in its elaboration and it has been approved by the responsible authorities of our center.

Authors declare no conflicts of interest.

Thank you for your attention.

J.C. Gallego

Correspondence:

Dr. J. C. Gallego. Department of Radiology.

Hospital A. Marcide. Av. Residencia s/n.

15405 FERROL. SPAIN.

e-mail: josecarlos.gallego.ojea@sergas.es

FAX +34 813340150

ILEAL CROHN'S DISEASE: MRI WITH ENDOSCOPIC CORRELATION

Authors: José C. Gallego<sup>1</sup> MD, Ana I. Echarri<sup>2</sup> MD, Ana Porta<sup>1</sup> MD, Virginia Ollero<sup>2</sup> MD.

Departments of Radiology<sup>1</sup> and Gastroenterology<sup>2</sup>. Hospital A. Marcide. Ferrol. Spain

Correspondence: José C. Gallego MD.

Department of Radiology. Hospital A. Marcide.

Av. Da Residencia s/n.

15405 Ferrol. Spain

Tel. +34981339713

Fax. +34981334015

e-mail: josecarlos.gallego.ojea@sergas.es

1  
2  
3  
4  
5  
6  
7  
8  
9  
10  
11  
12  
13  
14  
15  
16  
17  
18  
19  
20  
21  
22  
23  
24  
25  
26  
27  
28  
29  
30  
31  
32  
33  
34  
35  
36  
37  
38  
39  
40  
41  
42  
43  
44  
45  
46  
47  
48  
49  
50  
51  
52  
53  
54  
55  
56  
57  
58  
59  
60  
61  
62  
63  
64  
65

ILEAL CROHN'S DISEASE: MRI WITH ENDOSCOPIC CORRELATION

## Abstract

1  
2 Purpose: To evaluate activity staging of Crohn's disease (CD) measured with MR-  
3  
4 enterography using ileoscopy as reference standard.  
5

6  
7 Materials and methods: A prospective study was made of 61 patients with CD. All  
8  
9 patients underwent MR-enterography and ileoscopy. MRI activity was measured by  
10  
11 means of an ad hoc developed score, as well as by analysis of the imaging findings, and  
12  
13 was compared with the SES-CD score obtained via ileoscopy. Examinations were  
14  
15 performed using a 1.0 Tesla scanner.  
16  
17

18  
19 Results: MRI score discriminates between active and inactive disease with an area under  
20  
21 the ROC curve of 0.941. Overall correlation with the standard reference SES-CD score  
22  
23 was moderate to strong (Spearman's  $r=0.62$   $p<0.001$ ).  
24

25  
26 Agreement between both methods in staging patients with ileal CD as inactive, mild or  
27  
28 moderate to severe was good (Cohen's  $\kappa=0.60$ ). Differences in means of the MRI  
29  
30 activity scores of the three groups showed statistical significance ( $p<0.01$ ).  
31  
32

33  
34 Conclusions: The MRI score is a reliable predictor of activity in ileal CD and can stage  
35  
36 patients in a way comparable to endoscopy. 1.0 Tesla scans are valid for performing  
37  
38 radiological evaluation of ileal Crohn's disease.  
39  
40

41  
42  
43  
44  
45  
46 **Key words:** Crohn's disease, Magnetic Resonance Imaging, Small bowel,  
47  
48 Gastrointestinal endoscopy.  
49  
50  
51  
52  
53  
54  
55  
56  
57  
58  
59  
60  
61  
62  
63  
64  
65

## Introduction

1  
2  
3  
4  
5  
6  
7  
8  
9  
10  
11  
12  
13  
14  
15  
16  
17  
18  
19  
20  
21  
22  
23  
24  
25  
26  
27  
28  
29  
30  
31  
32  
33  
34  
35  
36  
37  
38  
39  
40  
41  
42  
43  
44  
45  
46  
47  
48  
49  
50  
51  
52  
53  
54  
55  
56  
57  
58  
59  
60  
61  
62  
63  
64  
65

Magnetic Resonance Imaging (MRI) is becoming a “first line” tool in both the detection of disease and in the assessment of activity in Crohn's disease (CD). The accuracy of imaging methods in diagnosing CD is very similar (1). At present, the role of imaging is centred on the assessment of disease extent and severity, and response to therapy (2). MRI is a noninvasive bowel imaging technique without any ionizing radiation, capable of demonstrating most of the classical radiological signs of the disease as well as other enteric and extraenteric manifestations. Thus, small bowel MRI can complement the endoscopic findings in the evaluation of CD.

Typical signs of CD in MRI were well-described by Koh et al. in 2001 (3). These authors also correlated quantitative and qualitative criteria with activity indexes. Several later studies emphasized the usefulness of MR in distinguishing patients with active disease from those with inactive disease (4-10). However, the current issue is whether MRI is able to grade the severity of the disease in the same way as other techniques. To answer this question, MRI or any other imaging technique must be correlated to an acceptable reference standard such as endoscopy, the histological findings or surgery. Even in such cases, however, the absence of a “gold standard” for detecting activity in this disease is a handicap for the obtainment of results.

Studies that used MRI to evaluate and to stage disease activity in the ileum using a valid reference standard are few and involve small patient samples (11-14). For this reason, we started a prospective study of 70 patients with ileal CD in order to evaluate activity staging measured with MR-enterography, using ileoscopy as reference standard.

In contrast to almost all previous authors who have used 1.5 T or 3.0 T scanners, our study was carried out using an intermediate-high field machine with a tesla rating of 1.0

T.

1  
2  
3  
4  
5  
6  
7  
8  
9  
10  
11  
12  
13  
14  
15  
16  
17  
18  
19  
20  
21  
22  
23  
24  
25  
26  
27  
28  
29  
30  
31  
32  
33  
34  
35  
36  
37  
38  
39  
40  
41  
42  
43  
44  
45  
46  
47  
48  
49  
50  
51  
52  
53  
54  
55  
56  
57  
58  
59  
60  
61  
62  
63  
64  
65



## Materials and Methods

1  
2  
3  
4  
5           Between November 2008 and December 2009, a total of 70 consecutive patients  
6  
7 with known or suspected Crohn's disease underwent MR-enterography and  
8  
9 ileocolonoscopy. During this period 9 patients were excluded because of incomplete  
10  
11 endoscopy (n=4), impossible MR-enterography (n=1), or a final diagnosis other than  
12  
13 CD (n=4). A total of 61 patients with biopsy-proven ileal CD were finally enrolled in  
14  
15 the study. In 12 patients subjected to previous ileal resection, the neoterminal ileum was  
16  
17 scored as terminal ileum.  
18  
19  
20

21           The study was conducted following the recommendations of the Declaration of  
22  
23 Helsinki, and approved by the local ethics committee. Informed consent was obtained  
24  
25 from all patients.  
26  
27  
28  
29  
30

### *Reference standard*

31  
32           Ileocolonoscopy was planned for all patients within 15 days of MRI, and was  
33  
34 performed by two gastroenterologists with experience in inflammatory bowel disease,  
35  
36 blinded to the imaging findings. Terminal or neoterminal ileum, in the case of previous  
37  
38 surgical resection, was reached in all of the 61 patients finally selected. Findings in the  
39  
40 ileum were scored according to the Simple Endoscopic Score for Crohn's disease (SES-  
41  
42 CD) (15). Four endoscopic variables were scored from 0 to 3: presence and size of  
43  
44 ulcers, extent of ulcerated surface, extent of affected surface and presence and type of  
45  
46 narrowing, yielding values for the index of between 0 and 12. Based on the SES-CD  
47  
48 results, ileal disease for each patient was classified as inactive (0-2), mild (3-6) or  
49  
50 moderate-severe ( $\geq 7$ ).  
51  
52  
53  
54  
55  
56  
57  
58  
59  
60  
61  
62  
63  
64  
65

## *MRI*

MR imaging was performed with a 1.0 T machine, with gradient amplitude 15 mT/m, (Intera, Philips, Best, The Netherlands) using a multichannel-body coil covering from the xiphoid process to the pubis.

Patients fasted for almost 8 hours and ingested 1.5 l of a polyethyleneglycol and mineral salts solution over 45 minutes before the MRI without any particular preparation of the colon. Images were acquired in the prone position and the fields of view were determined by the size of the patient, in order to avoid phase-encoding aliasing artefacts.

First, thick-slab coronal dynamic single-shot turbo spin-echo with fat saturation was performed to monitor fluid saturation of the small bowel, and to evaluate motility and distensibility of the affected segments.

After 20-40 mg of intravenous hyoscine bromide (Buscapina<sup>®</sup>, Boehringer Ingelheim), axial and coronal T2-weighted single-shot turbo spin-echo (SSTSE) (TR 2500 ms/TE 240 ms, slice thickness 6 mm, gap 1 mm, matrix 512x205), axial and coronal true fast imaging with steady-state precession (B-FFE) (TR 7.5 ms/TE 3.7 ms, 60° flip angle, slice thickness 5 mm, gap 1 mm, matrix 560x272) and coronal fat-suppressed THRIVE (T1-weighted high resolution isotropic volume examination), (TR 6.2 ms/TE 3.2 ms, 10° flip angle, slice thickness 4.2 mm, matrix 256x141, fat-saturation SPIR), were performed, all them in breath-hold mode. This last sequence was acquired before and after intravenous bolus dose injection of gadopentetate dimeglumine (Magnevist<sup>®</sup>, Bayer) (0.1 mmol/kg body weight). Dynamic scans after gadolinium administration were performed at 40, 70, 120, and 180 s. Acquisition at 70 s (enteric phase) was used for relative enhancement calculations.

### *MRI analysis*

All images were examined with a dedicated workstation (EWS; Philips Medical Systems) by two radiologists with experience in abdominal imaging, in consensus, and blinded to the endoscopic and clinical results.

The following items were evaluated in the ileum, in order to stage CD activity with MRI:

#### Quantitative measurements.

Wall thickness and percentage of luminal stenosis were measured with the proper tools of the EWS workstation, using electronic callipers. Maximum bowel wall thickness was considered normal when below 3 mm (16). The cut-off point for an abnormal percentage of luminal stenosis was established as 60% (17). To calculate the relative contrast enhancement, we determined the wall signal intensity (WSI) as the average of three ROIs placed at the maximum visual enhancement areas. Also three measurements outside the body were placed to obtain the standard deviation (SD) of the noise before and after gadolinium administration. The formula  $\{(WSI \text{ postgadolinium} - WSI \text{ pregadolinium}) / (WSI \text{ pregadolinium})\} \times 100 \times (SD \text{ noise pregadolinium} / SD \text{ noise postgadolinium})$  (18) was used to calculate relative contrast enhancement (RCE) of the bowel.

#### Qualitative evaluations.

Motility and distensibility were evaluated subjectively by means of the coronal thick-slab dynamic sequence, viewed as cine-loop in the workstation. Bowel wall edema was defined as mural hyperintensity relative to the psoas muscle on T2-weighted sequences, discarding fat wall deposition in B-FFE sequences. Presence or absence of mucosal abnormalities (wall nodularity, ulcers, pseudopolyps), enlarged lymph nodes (short axis >10 mm), sinus tracts or fistulae, and inflammatory masses could be determined in any

sequence (Figures 1-5).

Besides this, a per-patient assessment of disease activity was performed using the MR score explained in Table 1. This score is a modification of that developed by Girometti et al. (14) in order to obtain an index fully comparable to the SES-CD. Some parameters, such as “mesenteric involvement” and “layered enhancement”, which can also be present in chronic disease were removed. This was the reason for the loss of weight of the item “luminal stenosis” as well. In contrast, “bowel wall edema” was included because it is considered a marker of submucosal inflammation (19) and a good predictor of endoscopic scores (20). The resulting score allows patient classification into three categories of disease activity similar to the SES-CD: inactive (0-2), mild activity (3-6), and moderate to severe activity ( $\geq 7$ ).

### *Statistics*

The diagnostic accuracy of every single parameter and MRI score was calculated measuring the area under the ROC (receiver operating characteristics) curves.

Correlation with the standard reference SES-CD was tested with Spearman’s correlation coefficient.

Concordance between MRI and endoscopy was fitted calculating Cohen’s kappa value. Finally, for comparison between groups of patients according to severity of the disease, analysis of variance (ANOVA) was used to evaluate the significance of mean differences.

Statistics were calculated with the SPSS package version 9 (SPSS, Chicago, IL). A value of less than 0.05 was considered to indicate a statistically significant difference.

## Results

1  
2  
3  
4  
5 A total of 61 patients with ileal CD were evaluated (32 female and 29 male, age  
6  
7 range 14-65 years, mean 36.1). Twelve patients (19.7%) had undergone previous  
8  
9 ileocecal resection.  
10

### *Active versus inactive disease*

11  
12  
13  
14  
15  
16 For the detection of inactive or active CD, single parameters showed  
17  
18 heterogeneous values for accuracy, sensitivity, and specificity (see Table 2). Some, such  
19  
20 as bowel wall thickness or luminal stenosis, yielded high sensitivity and low specificity.  
21  
22 Others, such as relative enhancement, mucosal abnormalities, enlarged lymph nodes or  
23  
24 fistulae showed low sensitivity but very high specificity. Bowel wall edema showed  
25  
26 acceptable sensitivity and high specificity. However, the best results were achieved by  
27  
28 the MRI score, with an accuracy of 98.4%, sensitivity 100%, specificity 80%, positive  
29  
30 predictive value 98.2%, and a negative predictive value 100%. The MRI score also  
31  
32 showed a greater area under the ROC curve than any individual parameter (Table 3).  
33  
34  
35  
36  
37  
38  
39  
40

### *Correlation with standard reference (ileal SES-CD index)*

41  
42  
43  
44 Single parameters showed little or no correlation with the standard reference for  
45  
46 activity. Their results are shown in Table 3. The MRI score showed a better and very  
47  
48 significant correlation with the SES-CD (Spearman's  $r = 0.62$   $p < 0.001$ )  
49  
50

### *Assessing activity*

51  
52  
53  
54  
55  
56 On the basis of the standard reference test, 5 patients had inactive disease, 33  
57  
58 mild disease, and 23 had moderate to severe disease. The MRI score correctly staged 47  
59  
60  
61  
62  
63  
64  
65

1 patients (77.0%) (4 inactive, 24 mild disease, 19 moderate to severe disease). In 14  
2 patients the MRI results differed one grade from SES-CD: understaging occurred in 4  
3 moderate to severe patients that were staged as having mild disease, and overstaging  
4 occurred in 9 patients with mild disease staged as moderate to severe and one inactive  
5 staged as having mild disease (Table 4). Inactive disease was correctly staged in 80% of  
6 the cases, mild disease in 72.7% and moderate to severe disease in 82.6%. Overstaging  
7 was observed in 16.4% and understaging in only 6.5% of the patients. Agreement  
8 between the MRI score and SES-CD score calculated with Cohen's index ( $\kappa$ ) proved  
9 good (0.60). Staging was impossible using quantitative single parameters.  
10  
11  
12  
13  
14  
15  
16  
17  
18  
19  
20  
21  
22  
23

24 For the MRI score, the analysis of variance between groups of patients according  
25 to disease severity of the disease found the means of the three groups to be significantly  
26 different ( $p < 0.01$ ). In contrast, no significant difference were found between the means  
27 of mild and moderate to severe groups for single parameters such as bowel wall  
28 thickness, relative enhancement, or percentage stenosis (Table 5).  
29  
30  
31  
32  
33  
34  
35  
36  
37  
38  
39  
40  
41  
42  
43  
44  
45  
46  
47  
48  
49  
50  
51  
52  
53  
54  
55  
56  
57  
58  
59  
60  
61  
62  
63  
64  
65

## Discussion

1  
2 This study demonstrates that MRI scoring offers moderate to strong correlation  
3  
4 with the SES-CD endoscopic score in ileal CD, using a field strength of 1.0T. We also  
5  
6 show that our MRI score is able to classify the activity of ileal Crohn's disease into  
7  
8 three groups: inactive, mild and moderate to severe.  
9  
10

11  
12  
13 Although previous studies have addressed this issue, only a few stage CD  
14  
15 activity using an acceptable reference standard such as endoscopy, the histological  
16  
17 findings or surgery. Our study contributes a substantially larger number of patients. The  
18  
19 other studies evaluating (only in patients with CD) the severity of MRI ileal  
20  
21 involvement endoscopy as the reference standard also reported moderate to strong  
22  
23 correlations (Spearman's  $r=0.58$  and  $r=0.63$ ) (11,12), or no correlation (13), in patient  
24  
25 series ranging from 23 to 31 individuals. Other authors (20) have reported an excellent  
26  
27 correlation (Spearman's  $r=0.80$ ) in a series of 50 patients, for mixed ileal and colonic  
28  
29 findings, but do not report ileal results separately. All these studies used the Crohn's  
30  
31 Disease Endoscopic Index of Severity (CDEIS) as reference standard for endoscopic  
32  
33 activity. However, since the CDEIS is difficult to use in daily clinical practice, a closely  
34  
35 correlating Simple Endoscopic Score (SES-CD) has been developed (15). This score  
36  
37 evaluates four variables in each intestinal segment (ileum, right colon, transverse colon,  
38  
39 left colon and rectum) thus offering the possibility of calculating the ileal activity score  
40  
41 (ileal SES-CD), a feature not possible with the CDEIS.  
42  
43  
44  
45  
46  
47  
48  
49  
50  
51

52  
53 Evaluation of the MR study should include criteria similar to those of the  
54  
55 endoscopic score: extent of affected surface, edema, stenosis, ulcers, and also other  
56  
57 imaging signs not available to endoscopy, such as bowel wall thickness, enhancement  
58  
59  
60  
61  
62  
63  
64  
65

1 after gadolinium injection, motility, and extraintestinal findings, because they are also  
2 predictors of disease activity. We did not include “layered pattern of enhancement” for  
3  
4 although it is considered a sign of active disease (3,9,21), it can also be present when  
5  
6 there is submucosal fat deposition, a finding that denotes a chronic phase of the disease  
7  
8 and is present in the ileum of 18% of all patients with CD (22). Furthermore, it can be  
9  
10 redundant as a parameter of the score because “relative enhancement” already evaluates  
11  
12 contrast uptake of the bowel wall.  
13  
14  
15  
16  
17  
18

19           In the analysis of the data, we found only a weak correlation between wall  
20  
21 thickness, relative enhancement, or bowel wall edema, and the SES-CD score.  
22  
23 However, the MRI activity score appears to be a very useful tool for assessing ileal  
24  
25 disease activity, allowing an appropriate patient classification in a way that closely  
26  
27 resembles the endoscopic score. It is user-friendly and easy to understand in everyday  
28  
29 clinical practice, because its numerical values range from 0 to 12, like the simplified  
30  
31 endoscopic SES-CD.  
32  
33  
34  
35  
36  
37  
38

39           Our results, based on the mentioned score, show high accuracy in identifying  
40  
41 patients in remission, but with some inaccuracy in staging patients with mild and  
42  
43 moderate to severe activity. Overstaging more than understaging of the MRI findings is  
44  
45 in consonance with the results of the metaanalysis conducted by Horsthuis et al. (23)  
46  
47 and published during the preparation of our paper. In coincidence with these authors, we  
48  
49 consider that differences arise from the fact that MRI and ileoscopy are essentially  
50  
51 different methods: while endoscopy is only able to study the inner surface of the bowel,  
52  
53 MRI can evaluate the entire intestinal wall, as well as the extraenteric structures.  
54  
55  
56  
57  
58  
59  
60  
61  
62  
63  
64  
65



1 A limitation of our study can be the use of MR-enterography. We used this  
2 technique because it is well tolerated and time-saving, and comparable to MR-  
3 enteroclysis (24,25). In our opinion, the possible less complete distension of intestinal  
4 loops can be a problem only in the proximal intestine, not in the ileum, which is the  
5 region of interest in our study. Another limitation is that the technique was applied to a  
6 cohort of symptomatic individuals, which also explains the small number of inactive  
7 patients. Possibly, there is high prevalence of stenotic type CD, which can influence  
8 staging. Regarding bowel wall enhancement we preferred the use of numerical values  
9 lacking subjectiveness, but relative enhancement is very sensitive to technical problems  
10 such as field inhomogeneity and other factors. Lastly, in evaluating bowel wall edema,  
11 the signal intensity in T2-weighted sequences could be better evaluated with negative  
12 enteric contrast media, and with fat-suppression techniques.  
13  
14  
15  
16  
17  
18  
19  
20  
21  
22  
23  
24  
25  
26  
27  
28  
29  
30

31 In conclusion, MRI can stage the severity of ileal CD in a way comparable to  
32 endoscopy. Accordingly, it appears as a reliable and non-invasive method for this  
33 purpose, though with some inaccuracy in differentiating mild from severe disease.  
34 Moreover, our results indicate that cumulative scores are better predictors of activity  
35 than sparse factors in MRI. Our study also demonstrates that 1.0 Tesla scans are valid  
36 for radiological evaluation of ileal Crohn's disease.  
37  
38  
39  
40  
41  
42  
43  
44  
45  
46  
47  
48  
49  
50  
51  
52  
53  
54  
55  
56  
57  
58  
59  
60  
61  
62  
63  
64  
65

## REFERENCES

- 1  
2  
3  
4  
5 (1) Horsthuis K, Bipat S, Bennink RJ, Stoker J. Inflammatory bowel disease diagnosed  
6  
7 with US, MR, Scintigraphy, and CT: Metaanalysis of prospective studies. *Radiology*  
8  
9 2008;247:64-79.  
10
- 11  
12 (2) Baidoo L, Regueiro M. Radiologic testing in Crohn's disease. *Inflamm Bowel Dis*  
13  
14 2008;14:S181-S182.  
15
- 16  
17 (3) Koh DM, Miao Y, Chinn RJ et al. MR imaging evaluation of the activity of Crohn's  
18  
19 disease. *AJR* 2001;177:1325-1332.  
20
- 21  
22 (4) Low RN, Sebrechts CP, Politoske DA et al. Crohn disease with endoscopic  
23  
24 correlation: Single-shot fast spin-echo and gadolinium-enhanced fat-suppressed spoiled  
25  
26 gradient-echo MR imaging. *Radiology* 2002;222:652-660.  
27  
28
- 29  
30 (5) Maccioni F, Viscido A, Marini M, Caprilli R. MRI evaluation of Crohn's disease of  
31  
32 the small and large bowel with the use of negative superparamagnetic oral contrast  
33  
34 agent. *Abdom Imaging* 2002;27:384-393.  
35
- 36  
37 (6) Gourtsoyiannis N, Papanikolaou N, Grammatikakis J, Papamastorakis G,  
38  
39 Prassopoulos P, Roussomoustakaki M. Assessment of Crohn's disease activity in the  
40  
41 small bowel with MR and conventional enteroclysis: preliminary results. *Eur Radiol*  
42  
43 2004;14:1017-124.  
44
- 45  
46 (7) Sempere GAJ, Martinez V, Medina E et al. MRI evaluation of inflammatory activity  
47  
48 in Crohn's disease. *AJR* 2005;184:1829-1835.  
49
- 50  
51 (8) Florie J, Wasser MNJM, Arts-Cieslik K, Akkerman EK, Siersesma PD, Stoker J.  
52  
53 Dynamic contrast-enhanced MRI of the bowel wall for assessment of disease activity in  
54  
55 Crohn's disease. *AJR* 2006;186:1384-1392.  
56  
57  
58  
59  
60  
61  
62  
63  
64  
65

- 1  
2  
3  
4  
5  
6  
7  
8  
9  
10  
11  
12  
13  
14  
15  
16  
17  
18  
19  
20  
21  
22  
23  
24  
25  
26  
27  
28  
29  
30  
31  
32  
33  
34  
35  
36  
37  
38  
39  
40  
41  
42  
43  
44  
45  
46  
47  
48  
49  
50  
51  
52  
53  
54  
55  
56  
57  
58  
59  
60  
61  
62  
63  
64  
65
- (9) Del Vescovo R, Sansoni I, Caviglia R et al. Dynamic contrast enhanced magnetic resonance imaging of the terminal ileum: differentiation of activity of Crohn's disease. *Abdom Imaging* 2008;33:417-424.
- (10) Malago R, Manfredi R, Benini L, D'Alpaos G, Mucelli RP. Assessment of Crohn's disease activity in the small bowel with MR-enteroclysis: clinico-radiological correlations. *Abdom Imaging* 2008;33:669-675.
- (11) Schreyer AG, Gölder S, Scheibl K, Völk M, Lenhart M, Timmer A, Schölmerich J, Feuerbach S, Rogler G, Herfarth H, Seitz J. Dark lumen magnetic resonance enteroclysis in combination with MRI colonography for whole bowel assessment in patients with Crohn's disease: First clinical experience. *Inflamm Bowel Dis* 2005;11:388-394.
- (12) Florie J, Horsthuis K, Hommes DW et al. Magnetic resonance imaging compared with ileocolonoscopy in evaluating disease severity in Crohn's disease. *Clin Gastroenterol Hepatol* 2005;3:1221-1228.
- (13) Van Gemert-Horsthuis K, Florie J, Hommes DW et al. Feasibility of Evaluating Crohn's Disease Activity at 3.0 Tesla. *J Magn Reson Imaging* 2006;24:340-348.
- (14) Girometti R, Zuiani C, Toso F et al. MRI scoring system including dynamic motility evaluation in assessing the activity of Crohn's disease of the terminal ileum. *Acad Radiol* 2008;15:153-164.
- (15) Daperno M, D'Haens G, Van Assche G et al. Development and validation of a new, simplified endoscopic activity score for Crohn's disease: the SES-CD. *Gastrointest Endosc* 2004;60:590-591.
- (16) Laghi A, Borrelli O, Paolantonio P et al. Contrast enhanced magnetic resonance imaging of the terminal ileum in children with Crohn's disease. *Gut* 2003;52:393-397.

1  
2  
3  
4  
5  
6  
7  
8  
9  
10  
11  
12  
13  
14  
15  
16  
17  
18  
19  
20  
21  
22  
23  
24  
25  
26  
27  
28  
29  
30  
31  
32  
33  
34  
35  
36  
37  
38  
39  
40  
41  
42  
43  
44  
45  
46  
47  
48  
49  
50  
51  
52  
53  
54  
55  
56  
57  
58  
59  
60  
61  
62  
63  
64  
65

(17) Negaard A, Sandvik L, Mulahasanovic A, Berstad, Klöw N-E. Magnetic resonance enteroclysis in the diagnosis of small-intestinal Crohn's disease: Diagnostic accuracy and inter- and intra-observer agreement. *Acta Radiologica* 2006;47:1008-1016.

(18) Shoenut JP, Semelka RC, Magro CM, Silverman R, Yaffe CS, Micflikier AB. Comparison of Magnetic Resonance Imaging and endoscopy in distinguishing the type and severity of inflammatory bowel disease. *J Clin Gastroenterol* 1994;19:31-35.

(19) Martin DR, Lauenstein T, Sitaraman SV. Utility of magnetic resonance in small bowel Crohn's disease. *Gastroenterology* 2007;133:285-390.

(20) Rimola J, Rodriguez S, García-Bosch O et al. Magnetic resonance for assessment of disease activity and severity in ileocolonic Crohn's disease. *Gut* 2009;58:1113-1120.

(21) Punwani S, Rodriguez-Justo M, Bainbridge A, et al. Mural inflammation in Crohn disease: Location-matched histological validation of MR imaging features. *Radiology* 2009;252:712-720.

(22) Amitai MM, Arazi-Kleinman T, Avidan B et al. Fat halo sign in the bowel wall of patients with Crohn's disease. *Clin Radiol* 2007;62:994-997.

(23) Horsthuis K, Bipat S, Stokkers PCF, Stoker J. Magnetic resonance imaging for evaluation of disease activity in Crohn's disease: a systematic review. *Eur Radiol* 2009;19:1450-1460.

(24) Schreyer AG, Geissler A, Albrich H et al. Abdominal MRI after enteroclysis or with oral contrast in patients with suspected or proven Crohn's disease. *Clin Gastroenterol Hepatol* 2004;2:491-497.

(25) Negaard A, Paulsen V, Sandvik L et al. A prospective randomized comparison between two MRI studies of the small bowel in Crohn's disease, the oral contrast method and MR enteroclysis. *Eur Radiol* 2007;17:2294-2301.

## Figures

1  
2  
3  
4  
5 Figure 1. A 37-year-old male with multi-segment ileal stenoses.

6  
7 MR follow-through imaging showing stenotic ileal segments, and measurements  
8  
9 made to calculate the percentage stenosis.  
10

11  
12  
13  
14 Figure 2. A 46-year-old male presenting inflammatory ileal disease without significant  
15  
16 stenosis.

- 17  
18  
19 a. Coronal balanced-FFE sequence disclosing wall thickening and mucosal  
20  
21 nodulations consistent with pseudopolyps (inside the circle).  
22  
23  
24 b. Postcontrast coronal fat-suppressed THRIVE scan showing measurements made  
25  
26 to calculate the relative enhancement.  
27  
28  
29  
30

31  
32 Figure 3. A 30-year-old female with ileal mucosal abnormalities.

- 33  
34 a. Axial balanced-FFE scan showing the ulcerative and nodular pattern typical of  
35  
36 cobblestone mucosa (inside the circle).  
37  
38  
39 b. Ileoscopy showing extensive segmental ulcerations with inflammatory mucosal  
40  
41 thickening.  
42  
43  
44  
45

46  
47 Figure 4. A 27-year-old male with enteroenteric fistulae. Coronal balanced-FFE  
48  
49 sequence showing a cluster of bowel loops with the typical stellate appearance (inside  
50  
51 the circle).  
52  
53  
54  
55  
56  
57  
58  
59  
60  
61  
62  
63  
64  
65

Figure 5. A 19-year-old male with a pelvic inflammatory mass. In the coronal balanced-FFE sequence, an ill-defined hyperintense lesion (inside the circle) is seen to engulf ileum and bladder wall.

1  
2  
3  
4  
5  
6  
7  
8  
9  
10  
11  
12  
13  
14  
15  
16  
17  
18  
19  
20  
21  
22  
23  
24  
25  
26  
27  
28  
29  
30  
31  
32  
33  
34  
35  
36  
37  
38  
39  
40  
41  
42  
43  
44  
45  
46  
47  
48  
49  
50  
51  
52  
53  
54  
55  
56  
57  
58  
59  
60  
61  
62  
63  
64  
65

	<b>0</b>	<b>1</b>	<b>2</b>
Bowel wall thickness	< 3mm	3-4mm	> 4mm
Relative enhancement	< 70%	70-100%	> 100%
Motility	Normal	Reduced	Absent
Percentage stenosis	≤ 60%	> 60%	
Bowel wall edema	Absent	Present	
Mucosal abnormalities	Absent	Present	
Lymph nodes	Absent	Present	
Fistulae, sinus tracts	Absent	Present	
Inflammatory masses	Absent	Present	

**Table 1. MRI score modified from Girometti et al. (see reference 14).**

	Accuracy	Sensitivity	Specificity
Bowel wall thickness >3 mm	91.8	98.2	20
Percentage stenosis >60%	88.5	94.6	20
Relative enhancement >70%	45.9	41.1	100
Mucosal abnormalities	53.6	57.4	100
Bowel wall edema	73.8	71.4	100
Peristalsis	82	83.1	60
Distensibility	70.5	71.4	60
Enlarged lymph nodes	18	10.7	100
Fistulae	21.3	14.3	100

**Table 1. Values of MRI single parameters for the detection of disease activity.**



Parameter	Active vs. inactive disease Area under ROC curve	Correlation with SES-CD Spearman's <i>r</i>
Wall thickness	0.889	0.30 $p<0.05$
Relative enhancement	0.5	0.34 $p<0.05$
Percentage stenosis	0.754	0.25 $p<0.05$
MRI score	0.941	0.62 $p<0.001$

**Table 1. Active vs. inactive disease: area under the receiver operating characteristics (ROC) curve for single quantitative parameters and the MRI score. Single parameters and MRI score correlation with the SES-CD endoscopic score.**

		Inactive	Mild	Moderate to severe	<b>SES-CD ILEOSCOPY SCORE</b>
<b>MRI SCORE</b>	Inactive	4	0	0	
	Mild	1	24	4	
	Moderate to severe	0	9	19	

**Table 4. Agreement between the MRI score and the endoscopic score.**

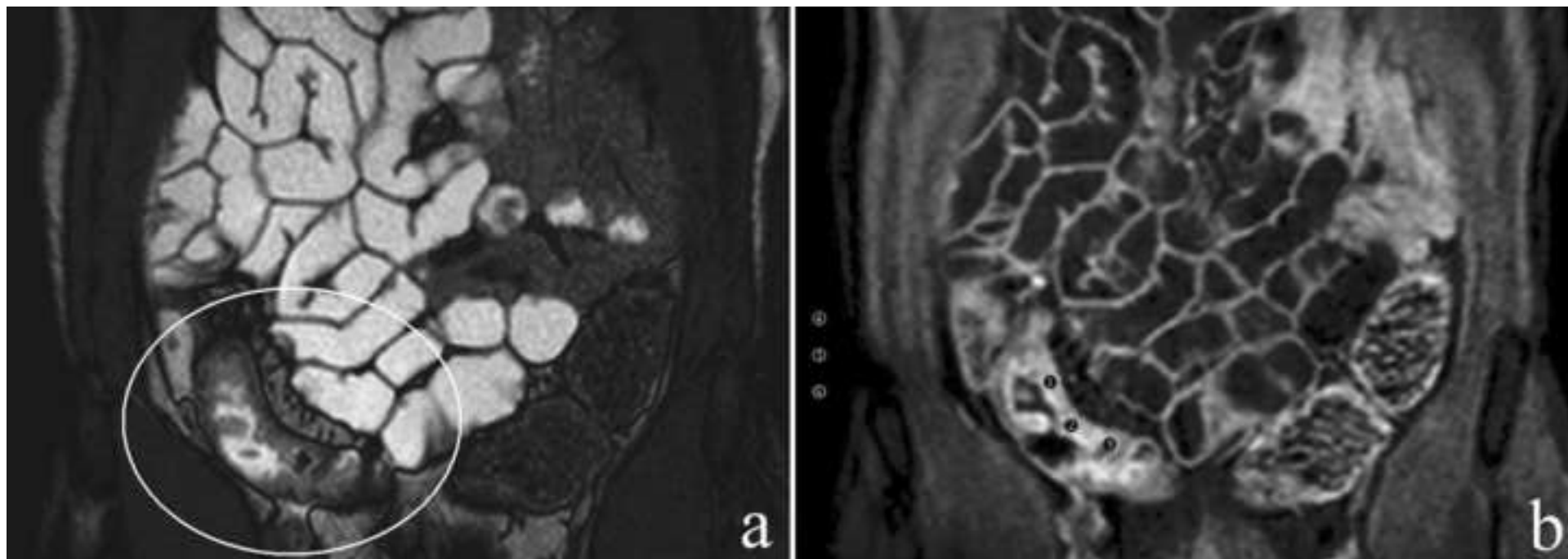
	Bowel wall thickness (mm)	Relative enhancement	Percentage stenosis	<b>MRI score</b>
Inactive (n=5)	3.8±1.1	51.5±12.1	62.2±25.5	2±1.9
Mild (n=33)	6.2±1.9	58.5±40.3	78.5±11.8	5.2±1.6
Moderate to severe (n=23)	7.2±1.9	84.5±46.6	83.5±7.9	7.4±1.1

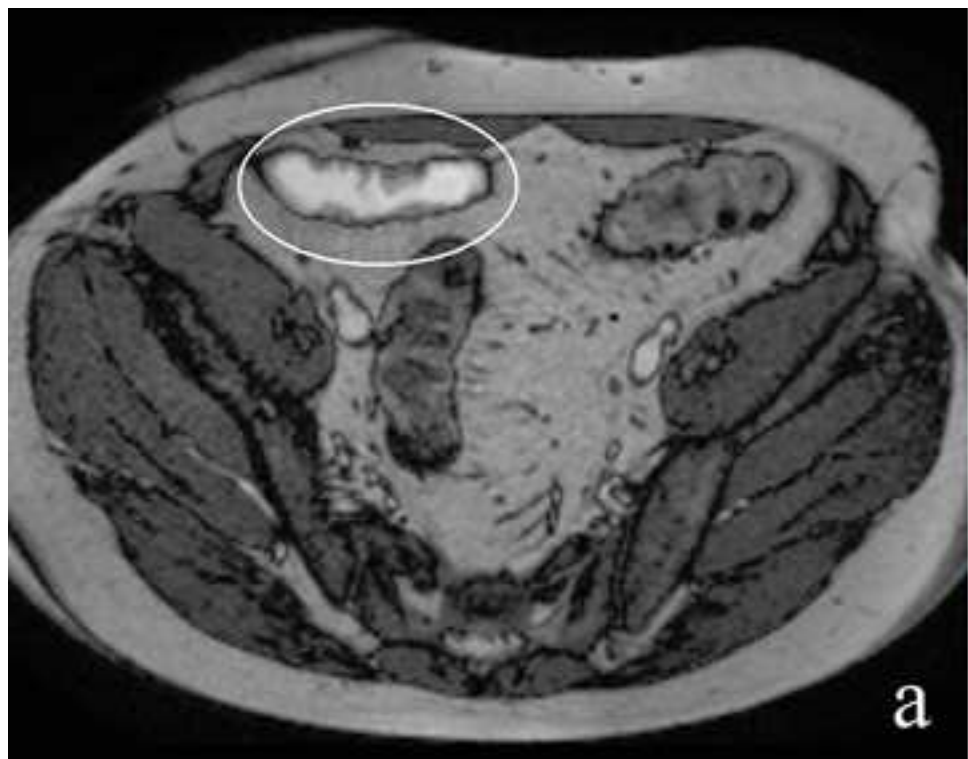
**Table 5. Quantitative criteria data and MRI score for severity of activity groups.**

Figure(s)

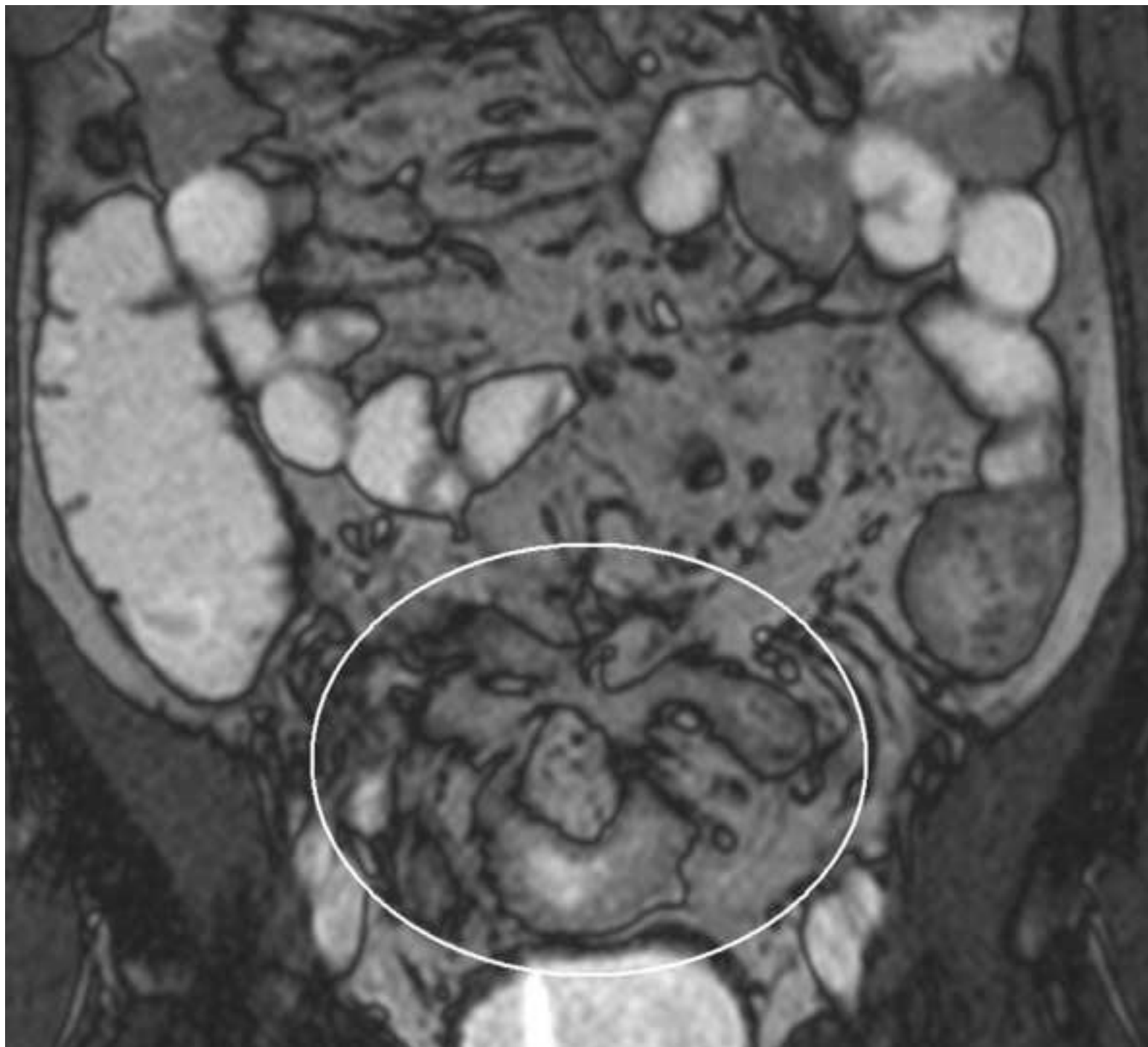
[Click here to download high resolution image](#)







Figure(s)  
[Click here to download high resolution image](#)





Figure(s)  
[Click here to download high resolution image](#)





Authors declare no conflicts of interest.