



HAL
open science

A new approach to solve the inverse scattering problem for waves: combining the TRAC and the Adaptive Inversion methods.

Maya de Buhan, Marie Kray

► To cite this version:

Maya de Buhan, Marie Kray. A new approach to solve the inverse scattering problem for waves: combining the TRAC and the Adaptive Inversion methods.. 2013. hal-00799110v1

HAL Id: hal-00799110

<https://hal.science/hal-00799110v1>

Preprint submitted on 11 Mar 2013 (v1), last revised 27 Feb 2015 (v2)

HAL is a multi-disciplinary open access archive for the deposit and dissemination of scientific research documents, whether they are published or not. The documents may come from teaching and research institutions in France or abroad, or from public or private research centers.

L'archive ouverte pluridisciplinaire **HAL**, est destinée au dépôt et à la diffusion de documents scientifiques de niveau recherche, publiés ou non, émanant des établissements d'enseignement et de recherche français ou étrangers, des laboratoires publics ou privés.

A new approach to solve the inverse scattering problem for waves: combining the TRAC and the Adaptive Inversion methods.

Maya de Buhan^{1,*}

¹ *CNRS, UMR 8145, MAP5, Université Paris Descartes, Sorbonne Paris Cité, France;*

Marie Kray^{2,†}

² *Mathematisches Institut, Universität Basel, CH-4051 Basel, Switzerland;*

March 11, 2013

Abstract

The aim of this paper is to propose a new method to solve the inverse scattering problem. This method works directly in the time-dependent domain, using the wave equation and proceeds in two steps. The first step is the Time-Reversed Absorbing Condition (*TRAC*) method to reconstruct and regularize the signal and to reduce the computational domain. The second step is the Adaptive Inversion method to solve the inverse problem from the *TRAC* data, by using basis and mesh adaptation. This strategy allows to recover the position, the shape and the properties of the scatterer in a precise and robust manner.

1 Introduction

In this paper, we propose a new method to solve the following inverse problem: we aim at reconstructing the location, the shape and the wave propagation speed of an unknown inclusion, surrounded by a medium whose properties are known, from boundary measurements.

1.1 Literature about inverse problems

The literature on inverse problems for waves is quite huge and the list that follows is not exhaustive. Let us first mention a large literature on the classically named inverse scattering problem. The goal is here to determine only the position and the shape of the scatterer from measurements of the far field pattern. We refer to the surveys by Colton, Coyle, and Monk [15] and Cakoni and Colton [12] on the inverse scattering theory. Since Kirsch and Kress [35], who used an idea originally proposed by Isakov [33], we know that the far field pattern corresponding to a single incident direction uniquely determines the shape of the inclusion, whatever the boundary conditions are.

Concerning numerical methods, let us now mention iterative methods like the least-square method, which are summarized by Tarantola [49], or like level-set methods as proposed by Burger and Osher [11]. Another theoretical point of view is given by Ammari and Kang [1] about

*e-mail: maya.de-buhan@parisdescartes.fr

†e-mail: marie.kray@unibas.ch

least-square algorithms for detection of inclusions. In parallel, they present the linear sampling method with the same application. Sampling methods are alternative to reconstruct sources or detect inclusions. The more famous is the linear sampling method introduced by Colton and Kirsch [16]. It has similarities with the MUltiple SIgnal Classification algorithm (MUSIC) developed by Devaney [19], and discussions between the linear sampling method and the MUSIC algorithm can be found in [14, 34]. As sampling methods, we can cite the probe method [31], the singular-source method [8] and the factorization method [38]. A survey about sampling methods is also proposed by Potthast [45]. In the same spirit, we can mention the point-source method described in [46]. Time reversal techniques have also applications to inverse scattering problems. For example, Prada and Fink [47, 43] developed the D.O.R.T. method, based on the decomposition of the time reversal operator to recover the location of the inclusion. A theoretical study about time reversal techniques in non-homogeneous media can be found in [23], then application to imaging are developed by Borcea *et al.* [10]. A lot of these methods are working in the time-harmonic domain and use Fourier transform to treat the signal. For applications in the time-dependent domain, we refer to Lines and Chandler-Wilde [39], who work on the point-source method, to H. Haddar *et al.* [29] for the linear sampling method, and to Cassier and Hazard [13] for time reversal techniques.

Note that some of these methods do not need to know the type of inclusions to be found, sounsoft or sound-hard mostly but in general, they do not try to recover the properties of the scatterer. In our case, we are interested in reconstructing the shape but also the wave propagation speed inside the inclusion. As for the inverse scattering problem, the first issue of concern is that of uniqueness, *i.e.* does the far field pattern (respectively the Dirichlet-to-Neumann map in a bounded domain) uniquely determine the properties of the inclusion? This question was solved by Sylvester and Uhlmann in their fundamental work [48]. Concerning stability results, we can mention the results, in the time-dependent domain, by Imanuvilov and Yamamoto [32] for a single internal measurement and by Klibanov and Yamamoto [36] for a boundary measurements. These results are based on Carleman estimates. From a numerical point of view, all existing methods for determining the wave propagation speed without linearizing the problem are based on nonlinear optimization methods. We mention in particular the numerous works by Gutman and Klibanov [28]. These methods gives good reconstruction results but suffer from extremely time consuming computations. In this article, we will show that in our case, we are able to drastically decrease this computational time and make the reconstruction conceivable in practice.

1.2 New approach

Our strategy combines two methods recently developed by the authors:

1. the Time-Reversed Absorbing Condition method (*TRAC*) first introduced in [5]:
It combines time reversal techniques and absorbing boundary conditions. Since the seminal paper by Fink *et al.* [22], time reversal is a subject of very active research. The main idea is to take advantage of the reversibility of wave propagation phenomena such as it occurs in acoustics, elasticity or electromagnetism in a non dissipative unknown medium to back-propagate signals to the sources that emitted them. Number of industrial applications have already been developed: touchscreen, medical imaging, non destructive testing and underwater communications. However, the resolution of these applications is restricted by the diffraction limit. The motivation of the *TRAC* method comes from the experiment of Larmat *et al.* [37]. Our idea is to overcome the diffraction limit by removing a subdomain and imposing a special boundary condition on the artificial border. Our previous study shows us that this condition

must be a time reversed absorbing boundary condition. Absorbing boundary conditions (ABCs) or non-reflecting boundary conditions (NRBCs) have been developed since the seminal paper by Engquist and Majda [20] for planar boundaries, afterwards for spherical boundaries by Bayliss and Turkel [7], for the wave-like equation. Further works are also proposed by Grote and Keller in [26] for wave-like equation, in [27] for Maxwell's equations and in [25] for elastic waves.

The *TRAC* method has at least two applications: the reduction of the size of the computational domain and the determination, from boundary measurements, of the location and volume of an unknown inclusion. The method does not rely on any *a priori* knowledge of the physical properties of the inclusion. The second application has already been well developed in [5, 3]. In this paper we focus on the first application. We use the *TRAC* method to reconstruct the signal in a truncated domain that encloses the inclusion. This enables to reduce the size of the computational domain where we solve the inverse problem, now from virtual internal measurements. Moreover the *TRAC* method is fairly insensitive with respect to the noise on the recorded data and then allows us to work with regularized data without using any filtering method.

2. the Adaptive Inversion (AI) method initially proposed for the viscoelasticity equation in de Buhan and Osses [18]:

This method solves the inverse problem by minimizing a non-quadratic functional that classically depends on the gap between the experimental measurements and the simulated data. For the minimization, we use a Newton-type algorithm. The originality of this method comes from the parametrization of the problem. Instead of looking for the value of the unknown parameter at each node of the mesh, it projects the parameter into a basis composed by eigenvectors of the Laplacian operator. Then, the AI method uses an iterative process to adapt the mesh (see P. Frey [24]) and the basis of eigenfunctions to the previous approximation. This process allows to concentrate the vertices of the mesh and the variations of the eigenfunctions in the region of the inclusion interface. In this way, the interface can be more precisely captured and the reconstruction is improved without increasing the computational time. This method has been successfully applied in [18] to recover a parameter in the integro-differential hyperbolic system of the viscoelasticity from internal measurements. Previously, thanks to a Carleman estimate, we showed that this reconstruction was possible from only one measurement in de Buhan and Osses [17].

The novelty of our work is threefold. Firstly, we present a new study on the regularizing power of the *TRAC* method. Secondly, we adapt the Adaptive Inversion method to the case of the wave equation and we propose a new anisotropic version of the iterative process. Finally, we present a large variety of numerical examples to illustrate the efficiency of the combination of both methods. In particular, our strategy allows (a) to reduce the computational cost, (b) to stabilize the inverse problem and (c) to improve the precision of the results.

1.3 Specifications and assumptions

Let us now describe in details the framework of our study. We hope this will help the reader to replace without any ambiguity this work in the large literature on inverse problems. The context of our method is the following: we want to recover the position, the shape and the wave propagation speed of a penetrable inclusion. In particular, the surrounded medium is known and for the sake of simplicity it is supposed homogeneous. The wave propagation speed inside the inclusion can be non

constant but is superior to the one of the surrounded media. We refer to Baudouin *et al* [6] for this necessary condition to guarantee the stability of the reconstruction in the presence of an interface.

Our method works directly in the time-dependent domain. The physical equation is the acoustic wave equation: our study consists on a singlewave imaging using ultrasound waves only, unlike the work of Fink and Tanter [21] who propose also multiwave imaging by combining ultrasound waves and shear waves. Initially, the domain is at rest and we highlight the inclusion by a given incident wave with compact support in time. We deliberately use only one incident wave, coming from a single source, like in the point-source method [39] and unlike other methods, for example the linear sampling method [29] that is using several sources. This restrictive framework obviously makes the problem more difficult but is of interest for various applications. For example, in biomedical applications we aim at reducing the irradiation of the patients and in a military context, it is a way to remain furtive. The total field is then recorded on the source-receivers array (SRA) that encloses the interest area. This SRA is assumed to be continuous and of full aperture. This assumption is reasonable by considering application in medical imaging and will be relaxed in a future study. Note that we do not record any information about the normal derivative of the total field on the SRA. For the sake of simplicity, we work in a two-dimensional domain, but we hope to extend our work to three-dimensional cases. Until now, we only used synthetic data with multiplicative noise, see [15]. For this study to be meaningful, we are expecting collaborations with experimental teams that could be interested by the type of results presented here.

The remainder of this paper is divided in three parts. We recall in a first section the principle of the *TRAC* method. Then we present the Adaptive Inversion method for the wave equation in a second section. Finally, we propose some numerical results obtained thanks to the combination of both methods that illustrate the quality of the reconstruction.

2 First step: the *TRAC* method

The *TRAC* method was first introduced in [5] in the general case with full aperture of the source-receivers array (SRA), then in [3] in the time-dependent domain with partial aperture of the SRA and discrete receivers. Here we consider the *TRAC* method in the case of the wave equation with a full aperture SRA. We first recall the principle of the method in this particular case. Then we illustrate the *TRAC* method and propose a numerical analysis of the error of reconstruction. Finally we present the application to the reduction of the size of the computational domain, first step before solving the inverse problem.

2.1 Principle of the *TRAC* method

The context of the forward experiment is the following: we consider an incident wave u^I impinging on an inclusion D characterized by different physical properties from the homogeneous surrounding medium, $c(x) = c_0$ in $\mathbb{R}^2 \setminus D$. The total field u^T can be decomposed into the incident and scattered fields, so $u^T = u^I + u^S$. For simplicity, we consider the problem in two space dimensions and we assume that the total field satisfies the linear wave equation:

$$\frac{\partial^2 u^T}{\partial t^2} - \nabla \cdot (c^2(x) \nabla u^T) = 0 \quad \text{in } (0, \infty) \times \mathbb{R}^2, \quad (1)$$

together with homogeneous initial conditions. The scattered field u^S has a finite energy at any time. Let Γ_R be a curve that defines a bounded domain Ω and encloses the inclusion D , see Figure 1.

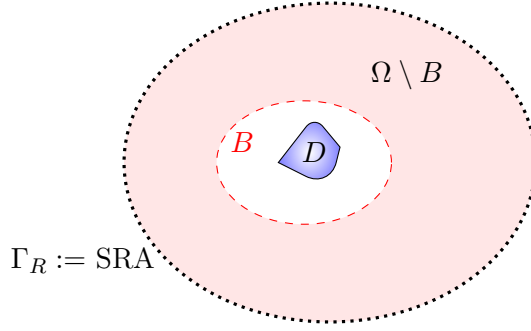


Figure 1: Computational domain to perform the *TRAC* method, delimited by the source-receivers array Γ_R and the subdomain B , such that B encloses inclusion D .

After a time T_f , the total field u^T is negligible in Ω . The scattered field u^S is recorded on Γ_R on the time interval $[0, T_f]$. Let $u_R^S(t, x) := u^S(T_f - t, x)$ denote the scattered time reversed field which also satisfies (1).

Our aim with the *TRAC* method is to reconstruct the time reversed field u_R^S from the measurements on Γ_R . For this purpose, we derive a boundary value problem whose solution is u_R^S in Ω . Yet we know neither the physical properties nor the exact location of the inclusion D , but only the physical properties of the surrounding medium. Therefore, we introduce a subdomain B which encloses the inclusion D . Then, we have to determine a boundary condition for u_R^S on the boundary ∂B such that the solution to this problem will coincide with u_R^S restricted to $\Omega \setminus B$.

Let us choose B as a ball of radius r . On ∂B , we approximate the radiation condition satisfied by u^S with the first-order Bayliss-Turkel (BT^1) absorbing boundary condition:

$$\text{ABC}(u^S) := \frac{\partial u^S}{\partial t} + c_0 \frac{\partial u^S}{\partial r} + c_0 \frac{u^S}{2r} = 0 \quad \text{on } (0, T_f) \times \partial B. \quad (2)$$

Next we *time reverse* this relation using $u_R^S(t, \cdot) = u^S(T_f - t, \cdot)$. In doing so, we note that $\partial/\partial r = -\partial/\partial n$ on ∂B where n is the outward normal to $\Omega \setminus B$. Hence we obtain:

$$\text{TRAC}(u_R^S) := \frac{\partial u_R^S}{\partial t} + c_0 \frac{\partial u_R^S}{\partial n} - c_0 \frac{u_R^S}{2r} = 0 \quad \text{on } (0, T_f) \times \partial B. \quad (3)$$

Hence the time reversed problem for the scattered field, analogous to (1), reads:

$$\left\{ \begin{array}{ll} \frac{\partial^2 u_R^S}{\partial t^2} - c_0 \Delta u_R^S = 0 & \text{in } (0, T_f) \times \Omega \setminus B, \\ \text{TRAC}(u_R^S) = 0 & \text{on } (0, T_f) \times \partial B, \\ u_R^S(t, \cdot) = u^S(T_f - t, \cdot) & \text{on } (0, T_f) \times \Gamma_R, \\ \text{homogeneous initial conditions.} & \end{array} \right. \quad (4)$$

Note the *anti-absorbing* term ($-c_0 u_R^S/2r$) in the TRAC condition. In [4] we proved an energy estimate in three space dimensions to state the stability of the time-reversed problem with a time-reversed absorbing condition.

For the following applications, we need to reconstruct the total field. It is necessary in order to solve the inverse problem with the proposed method and more logically because we record the total field in practice. Hence the boundary condition on ∂B has to be changed:

$$\text{TRAC}(u_R^S) = \text{TRAC}(u_R^T - u_R^I) = \text{TRAC}(u_R^T) - \text{TRAC}(u_R^I).$$

Then the time reversed problem for the total field reads:

$$\left\{ \begin{array}{ll} \frac{\partial^2 u_R^T}{\partial t^2} - c_0 \Delta u_R^T = 0 & \text{in } (0, T_f) \times \Omega \setminus B, \\ \text{TRAC}(u_R^T) = \text{TRAC}(u_R^I) & \text{on } (0, T_f) \times \partial B, \\ u_R^T(t, \cdot) = u^T(T_f - t, \cdot) & \text{on } (0, T_f) \times \Gamma_R, \\ \text{homogeneous initial conditions.} & \end{array} \right. \quad (5)$$

Note that to solve this problem, we need to know the incident wave in a neighborhood of ∂B . In practice we assume to know the source which emits and the medium without inclusion, then we compute the incident wave numerically.

We have assumed so far, for the sake of simplicity, that the surface B is a ball. Since we are finding an approximate location of the inclusion, this is usually sufficient. For an elongated body, a ball can be replaced by an ellipse or spheroidal surface. Absorbing boundary conditions for these cases have been developed in [42, 41] and for more general surfaces see, for example [2]. As shown above, a first-order *TRAC* method simply reverses the sign of the non-differentiated term of the corresponding first-order absorbing boundary condition. Thus, a first-order *TRAC* for a general subdomain in two space dimensions is given by

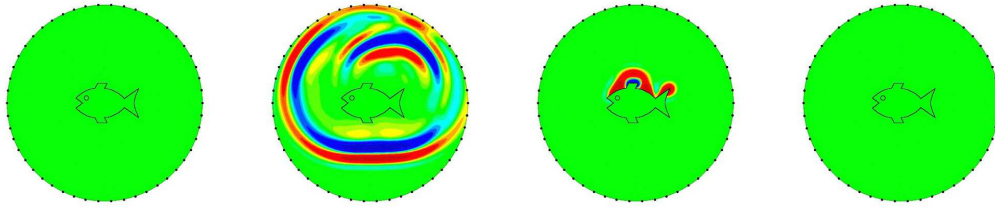
$$\text{TRAC}(u_R^S) := \frac{\partial u_R^S}{\partial t} + c_0 \frac{\partial u_R^S}{\partial n} - c_0 \frac{\kappa u_R^S}{2} = 0 \quad \text{on } (0, T_f) \times \partial B, \quad (6)$$

where κ is the curvature of the boundary ∂B .

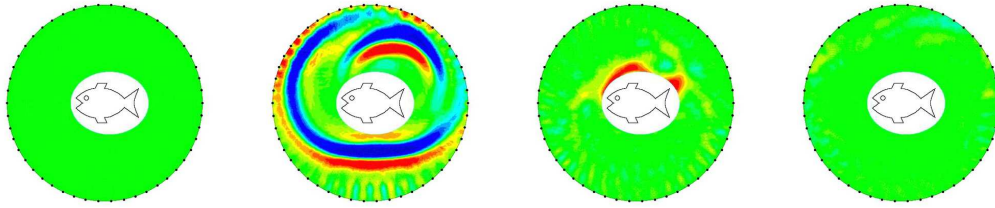
2.2 Numerical error analysis of the reconstruction with the *TRAC* method

On Figure 2, we display the results of the *TRAC* method for a reflecting fish-shaped inclusion. We also proposed other time reversal simulations. Figure 2 is composed of five subfigures, each of them contains four snapshots of the wave propagation from initial time $t = 0$ on the left column (corresponding to final time $t = T_f$ of the forward problem) to final time $t = T_f$ on the right column (corresponding to initial time $t = 0$ of the forward problem).

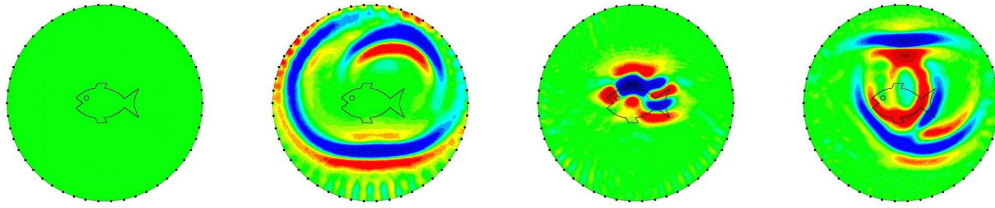
The first subfigure displays the perfect time reversal. It is simply the forward scattering field generated by the reflecting fish for decreasing times. Note that we know the forward scattering field for this case because we simulate the synthetic data. We use it to illustrate the *TRAC* method in an academical way. In practice, we are not assumed to know the forward scattering field in the whole domain, only on the recording boundary. The second subfigure illustrates the *TRAC* method with a subdomain B which correctly satisfies the assumption: B encloses inclusion D . This numerical time reversal experiment was performed with discrete receivers, spaced of a quarter of the central wavelength, and with 20% of noise on the recording data. In this case, we observe that the *TRAC* method enables us to reconstruct the scattered field in the truncated computational domain $\Omega \setminus B$. The third subfigure shows the classical time reversal. We indeed perform time reversal, but without removing the artificial subdomain B necessary in the *TRAC* method. Moreover we do not assume to know neither the location nor the properties of the inclusion, then the idea of classical time reversal is to solve the boundary value problem with $c(x) = c_0$ in the whole domain Ω . Because of this error on the medium properties, we are not able to reconstruct correctly the scattered field. On the fourth subfigure, we display a case of the *TRAC* method where the assumption of B enclosing D is not satisfied. The tail of the fish stays indeed in the truncated computational domain $\Omega \setminus B$. These pictures show the weight of this assumption because we are not able to reconstruct the scattered



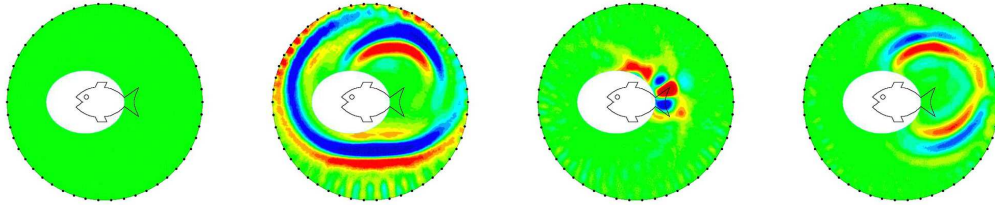
(a) Perfect time reversed scattered field as reference



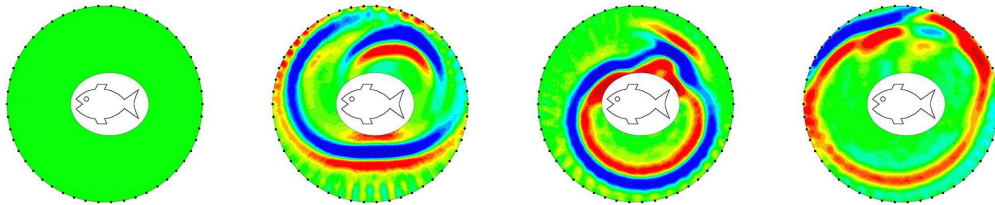
(b) *TRAC* method with B enclosing inclusion D



(c) Classical time reversal: computational domain Ω and $B = \emptyset$



(d) *TRAC* method with B not enclosing D : the tail stays in the computational domain $\Omega \setminus B$.



(e) On the artificial boundary ∂B , homogeneous Neuman conditions

Figure 2: Illustration of the *TRAC* method for a reflecting fish-shaped inclusion: snapshots of the wave propagation from initial time $t = 0$ (corresponding to final time $t = T_f$ of the forward problem) on the left to final time $t = T_f$ (corresponding to initial time $t = 0$ of the forward problem) on the right.

	1	1b	2	2b	3	3b	4	5	6	Mean
0%	6.28%	10.31%	3.14%	3.98%	1.93%	2.01%	3.92%	7.37%	5.18%	4.90%
5%	6.39%	10.38%	3.37%	4.17%	2.31%	2.43%	4.15%	7.50%	5.31%	5.11%
10%	6.72%	10.63%	4.03%	4.74%	3.21%	3.32%	4.68%	7.84%	5.78%	5.66%
20%	8.04%	11.47%	5.98%	6.42%	5.32%	5.41%	6.28%	8.87%	7.21%	7.22%

Table 1: Relative L^2 -error for nine different tests and for different levels of noise on the recording data.

field anymore. Thanks to this observation, we developed an identification technique of the presence of an inclusion, or of the absence of an inclusion in the truncated computational domain, see [5]. Finally the fifth subfigure is simply an illustration of the choice of the boundary condition imposed on ∂B . In this case, we correctly enclose inclusion D with the subdomain B . If the condition is not TRAC, but for example a homogeneous Neumann condition, the numerical time reversal experimental does not give the correct scattered field.

To quantify the error due to the *TRAC* method, we propose to compute the relative L^2 -error for nine different tests and for different levels of noise on the recording data. This error is computed in a two-wavelength thick ring of the truncated computational domain $\Omega \setminus B$ containing the border ∂B . The results are displayed in Table 1. This table is composed of five lines and eleven columns. The first line gives us the number of the considered test, when the other four lines give the error for each test depending on a level of noise, respectively 0%, 5%, 10% and 20%. The last column gives a mean value of the error depending on the level of noise on the recording data. The results are really satisfactory. We indeed observe that even if the error is already of 5% or 10% without noise, it is stable for increasing level of noise on the recording data. This error is certainly due to the approximation of the *TRAC* method which adds mesh interpolation errors. On average, when the noise level is 10%, we obtain a scattered field with only 5.66% of error. The *TRAC* method is fairly insensitive with respect to the noise on the recording data and regularizes the solution at least in a neighborhood of the artificial boundary ∂B .

2.3 Reduction of the size of the computational domain

An application of the *TRAC* method is the reduction of the size of the computational domain. The principle is to reconstruct the field in a part of the computational domain and define a new surface where the receivers seem virtually to be located. For example, with the *TRAC* method we are able to move virtually the receiver border Γ_R to the closer boundary ∂B . Then we solve the inverse problem in the truncated and smaller computational domain B with measurements from ∂B . This is reminiscent of the *redatuming* method that uses a paraxial approximation of the wave equation to propagate the signal in the domain and move virtually the SRA, see the seminal work of Berryhill [9], and more recently [40, 44]. In our method, we are able to do the same but without the paraxial approximation. Then the reconstruction must be more accurate because does not require the accuracy of the chosen paraxial approximation.

Moreover the *TRAC* method regularizes the reconstructed field with respect to the noise on the recorded data, by assuming that the noise is due to measurement errors, see Table 1. Hence we do not need any filter method to smooth our resulting signal before performing the inverse problem. The location of subdomain B can be chosen thanks to discrimination criteria, developed in [5] and [3], which tell us when the trial subdomain B encloses entirely the unknown inclusion D . The idea here is not to get a subdomain that is very close to the inclusion. We need simply a subdomain

that encloses the inclusion and that enables us to reconstruct the signal.

The first step of our technique is to perform the *TRAC* method to reconstruct the scattered field, or the total field similarly. Then we use the regularized data on the neighborhood of ∂B , denoted by ω , to solve an inverse problem in a smaller computational domain, see Figure 3 and next section. Notice that we do not know the normal derivative on the SRA but only measurements of the field. To perform the *TRAC* method, we need also to know the incident wave, i.e. the source, but it is not needed then to solve the inverse problem.

3 Second step : the Adaptive Inversion method

The Adaptive Inversion method has been initially proposed for the viscoelasticity equation in [18]. The originality of this method comes from the parametrization of the problem. Instead of looking for the value of the unknown coefficient at each node of the mesh, it projects the coefficient into a basis composed by the eigenvectors of the Laplacian operator. Then, it uses an iterative process to adapt the mesh and the basis and improve the reconstruction. This method takes as an entry the value of the observed solution in an annulus enclosing the unknown domain. And this is exactly what we obtained in the previous section using the *TRAC* method.

3.1 Inverse problem

Let $B \in \mathbb{R}^2$ be the domain obtained at the first step by the *TRAC* method and let \tilde{B} another open domain strictly containing B . We introduce $\omega = \tilde{B} \setminus B$, as shown on Figure 3. We denote by u_R^T the solution reconstructed by the *TRAC* method in ω . The latter is the observation taken as entry for the inverse problem.

We consider the wave equation in \tilde{B} with Dirichlet boundary condition:

$$\begin{cases} \frac{\partial^2 v}{\partial t^2} - \nabla \cdot (c^2(x) \nabla v) = 0 & \text{in } (T_1, T_2) \times \tilde{B}, \\ v(T_1, \cdot) = 0 & \text{in } \tilde{B}, \\ \frac{\partial v}{\partial t}(T_1, \cdot) = 0 & \text{in } \tilde{B}, \\ v = u_R^T & \text{on } (T_1, T_2) \times \partial \tilde{B}, \end{cases} \quad (7)$$

with $c^2(x) = c_0^2 + p(x)\chi_B(x)$, for all $x \in \tilde{B}$, where χ_B is the characteristic function of B . The time T_1 (respectively T_2) is the first time (resp. last time) when the solution u_R^T in ω is non zero. We have $0 < T_1 < T_2 < T_f$. The inverse problem that we consider can be written as follows:
Find p such that the solution v of system (7) associated to p coincide with u_R^T in $(T_1, T_2) \times \omega$.

To solve the inverse problem, we look for the minimizer of the non-quadratic functional

$$J(p) = \frac{1}{2} \int_{T_1}^{T_2} \int_{\omega} |v(t, x) - u_R^T(t, x)|^2 dx dt + \frac{\alpha}{2} \int_B |\nabla p(x)|^2 dx. \quad (8)$$

This minimization of the gap between the observations and the solution v of system (7) associated to p is a quite classical way for solving an inverse problem. And because the inverse problem is ill-posed in the $L^2((T_1, T_2) \times \omega)$ -norm considered for J , we add a Tikhonov regularizing term to stabilize the method. The choice of the regularization parameter α is crucial. If α is too small, the reconstruction

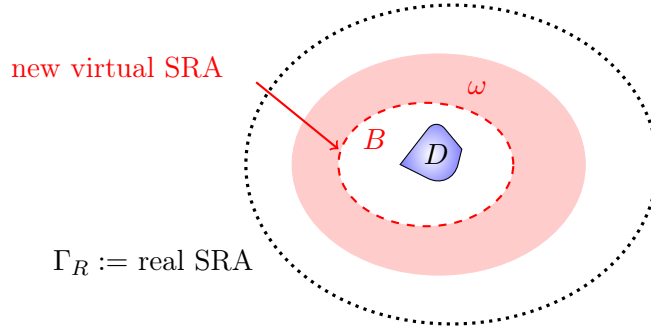


Figure 3: New virtual source receivers array (SRA) on ∂B : new data for the inverse problem in the coloured area ω , new computational domain $\tilde{B} = \omega \cup B$.

will be unstable but if α is too large, the method will converge to another function than the p we are looking for. A compromise between stability and precision have to be found. In practice, we choose α such that both terms in J have the same order of magnitude at the initialization of the algorithm. We solve the minimization problem by a Broyden-Fletcher-Goldfarb-Shanno (BFGS) algorithm. To do that, we have to compute:

$$\nabla J(p, \delta p) = \int_{T_1}^{T_2} \int_{\omega} (v(t, x) - u_R^T(t, x)) \delta v(x, t) dx dt + \alpha \int_B \nabla p(x) \cdot \nabla \delta p(x) dx,$$

where δv is the solution of the following linearized problem:

$$\frac{\partial^2 \delta v}{\partial t^2} - \nabla \cdot (c^2(x) \nabla \delta v) = \nabla \cdot (\delta p(x) \chi_B \nabla v) \quad \text{in } (T_1, T_2) \times \tilde{B},$$

with zero initial and boundary conditions. Now, if we introduce v^* the solution of the adjoint problem:

$$\left\{ \begin{array}{ll} \frac{\partial^2 v^*}{\partial t^2} - \nabla \cdot (c^2(x) \nabla v^*) = \begin{cases} v - u_R^T & \text{in } (T_1, T_2) \times \omega, \\ 0 & \text{in } (T_1, T_2) \times B, \end{cases} \\ v^*(T_2, \cdot) = 0 & \text{in } \tilde{B}, \\ \frac{\partial v^*}{\partial t}(T_2, \cdot) = 0 & \text{in } \tilde{B}, \\ v^* = 0 & \text{on } (T_1, T_2) \times \partial \tilde{B}, \end{array} \right.$$

we can simplify the expression of ∇J as follows:

$$\nabla J(p, \delta p) = - \int_B \delta p(x) \left(\int_{T_1}^{T_2} \nabla v(x, t) \cdot \nabla v^*(x, t) dt \right) dx + \alpha \int_B \nabla p(x) \cdot \nabla \delta p(x) dx.$$

In this form, for each p , we can compute the term $\int_{T_1}^{T_2} \nabla v(x, t) \cdot \nabla v^*(x, t) dt$ once and then obtain the gradient for each direction δp by a simple computation of integral.

3.2 Parametrization

The unknown coefficient p is not a constant but a function of x in B . In order to recover it, we have first to project the function into a discrete space. A natural choice could be to use a \mathbb{P}^1 Lagrange finite elements basis leading thus to recover the values of p at each node of the computational mesh.

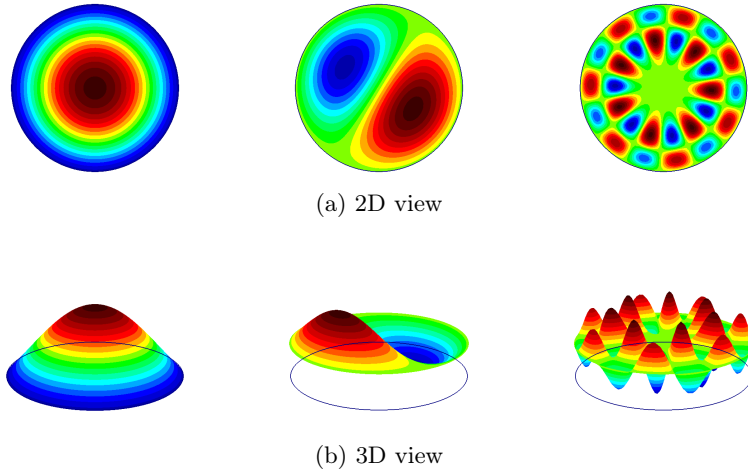


Figure 4: Eigenfunctions n^o 0, 1 and 49 of the Laplacian operator.

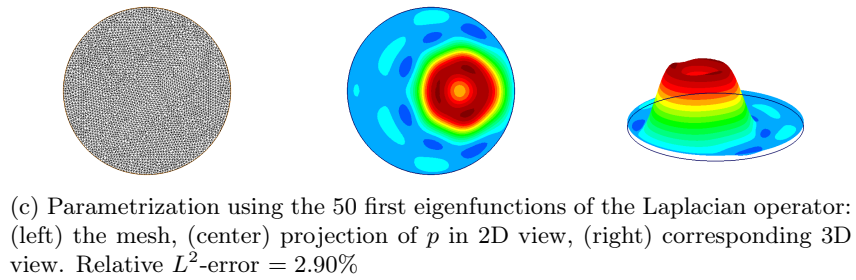
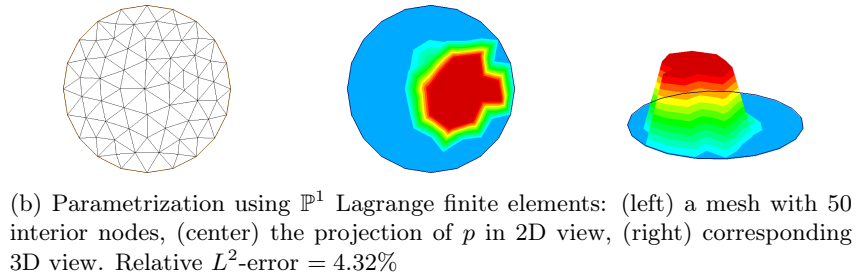
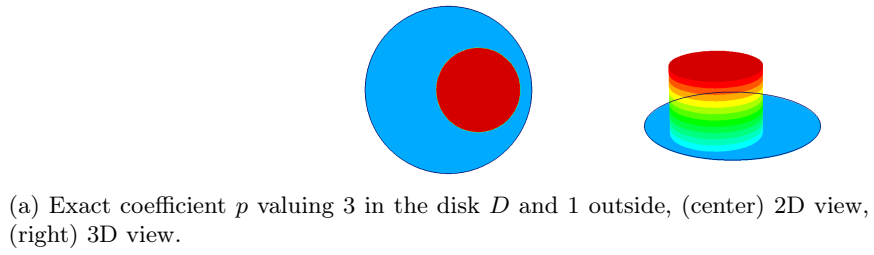


Figure 5: Comparison of two parametrizations to represent the unknown coefficient p .

Unfortunately, this leads to very large minimization spaces if we want to represent correctly the variations of p .

In our method, we propose to use another L^2 basis and to look for the coefficient p in the space spanned by the K first eigenfunctions of the Laplacian operator, that is

$$p(x) = \sum_{i=1}^K p_i \varphi_i(x),$$

where

$$\begin{cases} -\Delta \varphi_i = \sigma_i \varphi_i & \text{in } B, \\ \varphi_i = 0 & \text{on } \partial B. \end{cases} \quad (9)$$

The unknown are the p_i for $i = 1$ to K . This allows to decouple the size of the mesh and the dimension of the minimization space (size K).

On Figure 4, we plot some eigenfunctions of the Laplacian operator defined in (9). The figure is composed of two lines and three columns. The top line shows a two dimensional view of the chosen eigenfunctions, and the bottom line shows a three dimensional view of the same eigenfunctions. From left to right, we display eigenfunctions $n^o 0, 1$ and 49. On Figure 5, we compare on a simple example both parametrizations: with finite elements basis functions and with Laplacian eigenfunctions. The Figure is composed of three lines and three columns. The top line displays the exact coefficient. The middle line considers the case of the finite elements basis whereas the bottom line shows the case of the Laplacian eigenfunctions. Both cases are presented for $K = 50$ basis functions. Then we proposed, for both cases, the mesh on the left, a two dimensional view in the middle and a three dimensional view on the right for the coefficient decomposition. We observe that with the same number of functions, here $K = 50$, the Laplacian basis allows a better representation of the coefficient p .

3.3 Mesh and basis adaptation

Then, we propose an adaptive method to improve the accuracy of the reconstruction. After computing a first solution $p^{(0)}$ in the initial mesh using the method described in the previous sections, we use this solution to adapt the mesh and to find another basis that better represents the coefficient. The mesh adaptation used here is classical. It is based on the Hessian of the solution $p^{(0)}$ and it enables to concentrate the nodes of the mesh where the solution varies to decrease the approximation error without increasing the computational time. See Figure 7(a) for an example. We could also envisage an anisotropic mesh adaptation to better capture the interface of D , see Frey and Georges [24].

The basis adaptation considered is the following: we now look for the unknown coefficient p in the space spanned by the K first eigenfunctions of an elliptic operator, that is

$$p(x) = \sum_{i=1}^K p_i \psi_i(x),$$

with

$$\begin{cases} -\nabla \cdot (A(x) \nabla \psi_i) = \sigma_i \psi_i & \text{in } B, \\ \psi_i = 0 & \text{on } \partial B, \end{cases} \quad (10)$$

where the matrix function A is chosen depending on $p^{(0)}$. More precisely, we propose the following form for A

$$A = \frac{1}{|\nabla p^{(0)}|^q} Id, \quad \text{with } q \in \mathbb{N}. \quad (11)$$

Remark : To avoid problems when $|\nabla p_0|$ becomes close to zero, we replace it numerically by

$$|\nabla p_0| \leftarrow \max(|\nabla p_0|, \varepsilon), \quad (12)$$

where $\varepsilon > 0$ is a small non null parameter.

On Figure 6, in the two first lines, we compare the basis obtained with A for $q = 1$ and $q = 2$. In a line, we plot successively the eigenfunctions $n^o 0, 1$ and 49 of the operator defined in (10) and the projection of the exact coefficient p proposed in Figure 5(a) in the basis for $K = 50$. We also compute the relative L^2 -norm in each case. We observe that these choices of matrices A allow to concentrate the variations of the eigenfunctions in the regions where coefficient $p^{(0)}$ varies, that is near the interface of the inclusion D . When the power q of the gradient increases, the localization is improved. And we observe that in both cases the relative L^2 -norm is better than the one for the parametrizations of Figure 5.

In the last line of Figure 6, we present another choice for A which is anisotropic. The idea is to take into account the orientation of the interface of D and to accord a preference to variations of the basis functions in the direction of the gradient of $p^{(0)}$. To do that, as presented in Figure 8, we take a new orthonormed system (x, X_1, X_2) whose first axis is locally oriented by the gradient of $p^{(0)}$ and we define the transformation matrix P as follows:

$$P = \frac{1}{|\nabla p^{(0)}|^2} \begin{pmatrix} \frac{\partial p^{(0)}}{\partial x_1} & -\frac{\partial p^{(0)}}{\partial x_2} \\ \frac{\partial p^{(0)}}{\partial x_2} & \frac{\partial p^{(0)}}{\partial x_1} \end{pmatrix}.$$

In the new system, we choose to give more weigh to the direction of the gradient, by setting:

$$A = \frac{1}{|\nabla p^{(0)}|^2} PCP^{-1},$$

with

$$C = \begin{pmatrix} \frac{\varepsilon^2}{|\nabla p^{(0)}|^2} & 0 \\ 0 & 1 \end{pmatrix}.$$

This final choice for A generates a really better basis of representation for p as proved by the corresponding relative L^2 -norm computed in Figure 6.

Finally, the Adaptive Inversion method propose a global numerical process with four steps: at each step we use the solution obtained at the previous step to adapt the mesh and to built the matrix A . In fact, we use successively the three choices of A , with $q = 1$, then with $q = 2$ and finally with $q = 2$ and anisotropy. On Figure 7, we show the result of this process in the approximation of the exact coefficient p proposed in Figure 5(a). In the first line are the corresponding meshes which are adapted from the previous solution. In the second and third lines, we present the projection of p in the basis. The last line gives the relative L^2 -error between the projected and the exact coefficients.

We are aware that, until now, the method is essentially heuristic and will need a complete mathematical study to understand what is going on and to justify the strategy. Nevertheless, the results in the inverse problem are very encouraging as shown in Section 4.

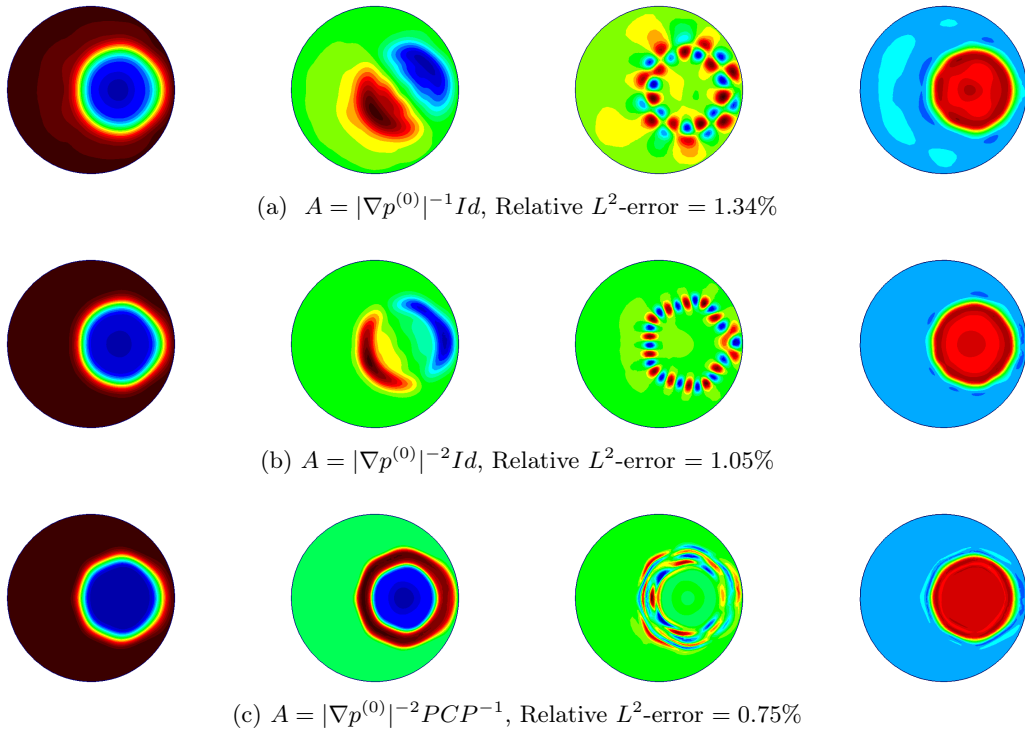
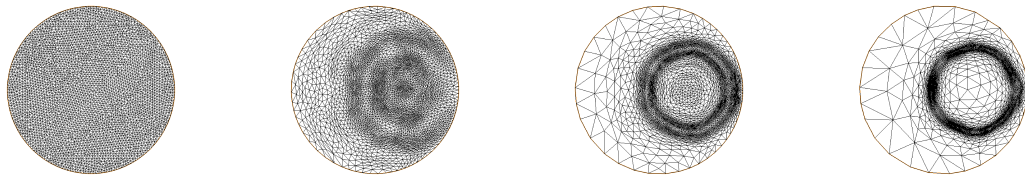
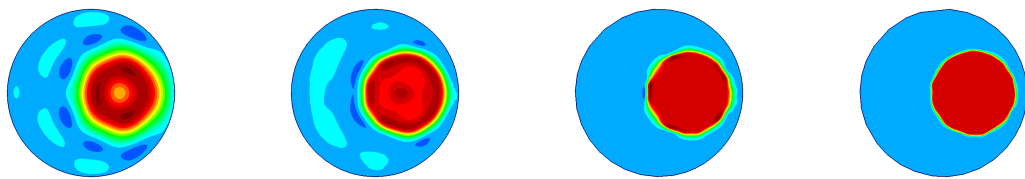


Figure 6: Comparison between the different choices for the matrix A : (left) eigenfunctions $n^o 0, 1$ and 49 of the operator (10), (right) projection of p into the corresponding basis.



(a) Mesh adaptation at step 0, 1, 2 and 3. All meshes have the same size (approximately 3800 vertices).



(b) Projection of p into the basis at step 0, 1, 2 and 3, 2D view.



(c) Projection of p into the basis at step 0, 1, 2 and 3, 3D view.

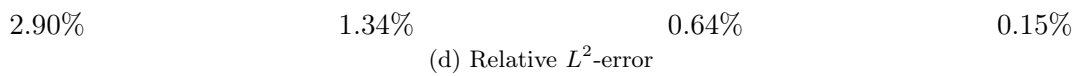


Figure 7: Illustration of the Adaptive Inversion process.

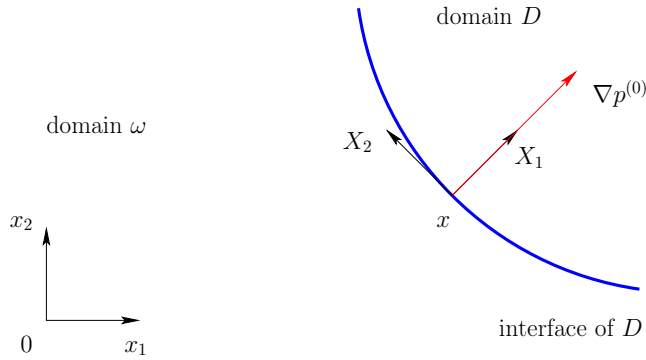


Figure 8: Illustration of the change of coordinate system for the anisotropic case.

4 Combination of the *TRAC* and the Adaptive Inversion methods

4.1 Numerical data

To reconstruct the shape and the properties of the inclusion, we first generate the synthetic data, then proceed the two steps. To avoid the *inverse crime*, we use neither the same meshes nor the same numerical schemes to simulate the synthetic data and to solve the inverse problem.

Step 0: synthetic data

In this paper, we work with synthetic data. Our long-term aim will be to work with real data. The context of the forward problem is displayed on Figure 9: a punctual source highlights the inclusion D , then the resulting total field is recorded on the SRA.

To create our synthetic data, we use a punctual source in space, with compact support in time. It is chosen to be a Ricker function, see [39]:

$$f(t) = \begin{cases} \left[1 - 2\pi^2(\nu_0 t - 1)^2\right] e^{-\pi^2(\nu_0 t - 1)^2}, & \text{if } t \in (0, T_s) \text{ and } x = x_s, \\ 0, & \text{otherwise,} \end{cases} \quad (13)$$

where ν_0 is the central frequency of the signal, T_s is the emitting time of the source, equal to two periods, and x_s is the location of the source outside the domain delimited by the SRA. The efficient spectrum of this signal, i.e frequencies which contribute with more than 20% of the signal, is $[2\nu_0/7, 2\nu_0]$, see Figure 10.

Now we define two characteristic wavelengths: the minimal wavelength λ_{min} which corresponds to the maximal frequency of the efficient spectrum, and the central wavelength λ which corresponds to the central frequency of the Ricker function. All lengths will be given with respect to both wavelengths as a reference. The computational domain is a ball of radius 10λ , the punctual source is located on the border of this domain and the SRA is a concentric ball of radius 4λ . Inside the domain delimited by the SRA, we have an inclusion of a characteristic size varying between $\lambda/2$ and 2λ . The propagation speed c in the medium reads:

$$c^2(x) = \begin{cases} c_0^2 = 1 & \text{in } \mathbb{R}^2 \setminus D, \\ c_D^2 = 3 & \text{in } D. \end{cases} \quad (14)$$

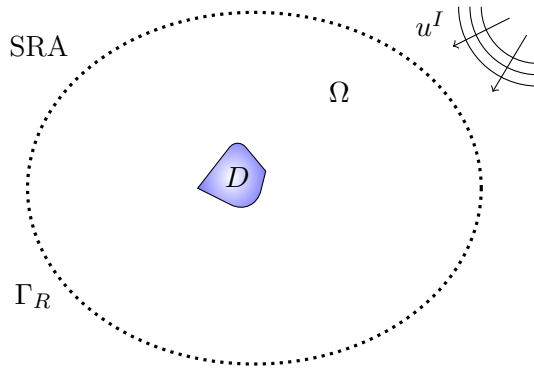


Figure 9: Geometry of the forward problem: location of the source with respect to the SRA and the inclusion.

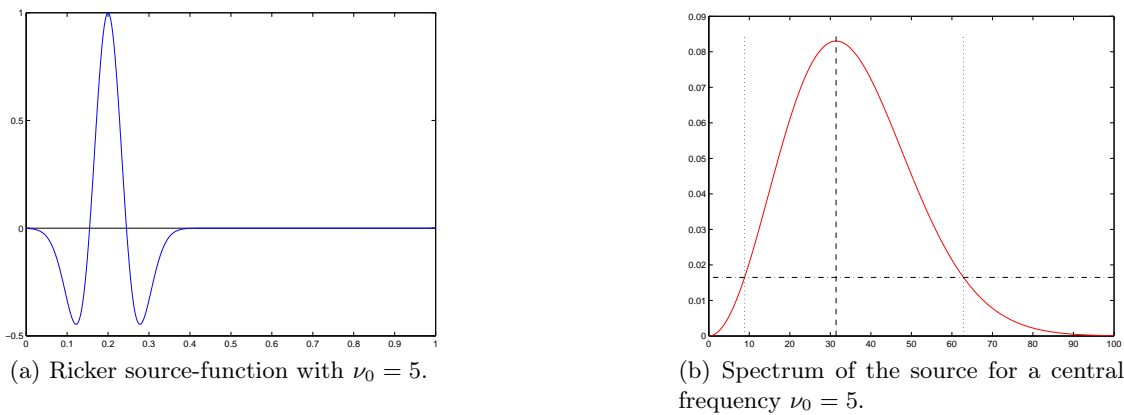


Figure 10: (a) Source and (b) its spectrum: central frequency (dashed line), efficient spectrum (between dotted lines).

To discretize the forward problem, we use a \mathbb{P}^1 -finite elements method in space, with a mesh conformed to the shape of the inclusion, and an explicit leap-frog scheme in time. The characteristic size of a cell of the mesh is $h = \lambda_{min}/10$ and the CFL is taken equal to $\sqrt{2}/8$. All simulations of the forward problem are executed with the software FREEFEM++ [30].

On the recorded data, we add a Gaussian noise:

$$u^T(t_j, x_i) := (1 + Coeff \times randn(t_j, x_i)) \times u^T(t_j, x_i), \quad (15)$$

where x_i denotes the position of receiver i , t_j denotes the j^{th} step of time, $randn$ satisfies a centered reduced normal law and $Coeff$ is the level of noise. Note that the model of noise, that we chose, is a multiplicative noise, not an additive one. Our choice is motivated by [15]. It allows to perturbate the recorded signal in order to avoid the *inverse crime* and to model the recording measurements from the receivers. It is not an ambient noise.

Step 1: TRAC method

To perform the TRAC method, we remove a ball of radius 1.4λ which is concentric to the SRA in this case (not necessary, see [3]). We work with a new mesh, independent on the previous one for the forward problem. The radius of the new computational domain is 5λ , containing the SRA of

radius 4λ . Just note that in this study the SRA is continuous and with full aperture. In $\Omega \setminus B$, the propagation speed is $c(x) = c_0$.

To discretize the *TRAC* problem, we use a \mathbb{P}^1 -finite elements method in space, with a mesh conformed to subdomain B and an explicit leap-frog scheme in time. The characteristic size of a cell of the mesh is still $h := \lambda_{min}/10 = 0.01$ and the CFL = $\sqrt{2}/8$. All simulations of the *TRAC* method are also executed with the software `FREEFEM++` [30].

Once the *TRAC* method is performed, the first user gives the reconstructed signal and the mesh on Figure 11(b) to the second user. The former does not give any indication about the shape and the properties of the inclusion, that he used to create the synthetic data. In particular, the second user does not need to know the incident wave to solve the inverse problem.

Step 2: Adaptive Inversion method

In order to solve the inverse problem, we discretize the equations (7) in space using \mathbb{P}^1 Lagrange Finite Elements on the mesh of \tilde{B} shown on Figure 11(c). On Figure 11, we illustrate the reduction of the domain obtained thanks to the *TRAC* method. From left to right, we present the entire mesh 11(a) including the source of the incident wave, the SRA and the inclusion D , the mesh 11(b) on which the *TRAC* method is performed, the mesh 11(c) used to solve (7) and the mesh 11(d) of the domain B where we recover p . Without the *TRAC* method, at each iteration of the minimization process of the inverse problem, we would have to solve the forward problem in the whole domain, which is of radius 10λ . We then reduce the degree of liberty of our computational domain from 138678 nodes to 2448 nodes.

In time, we discretize the equations (7) using a θ -scheme with $\theta = 0.5$ (implicit centered scheme). Because the chosen scheme is implicit, we do not have to satisfy any stability condition and can reduce the number of time steps by taking only one step over three. Moreover, we also reduce the total time $T_2 - T_1 < T_f$ of simulation because we reduced the size of the domain. In fact, we only have to propagate the incident wave from the virtual SRA on $\partial\tilde{B}$. Finally, we only have 250 time steps and not 2263 as for the forward problem. At the end, we have divided the computational time by at least 500. This is the reason why we can afford the use of an adaptive method with several steps (four here). Moreover, we always initialize a step with the solution obtained at the previous step, such that the first step might be costly but the following steps converge rapidly.

To solve the inverse problem, we use at each step a basis of 100 functions. The parameter ε in (12) is taken equal to 10^{-5} . To solve the eigenvalue problem (10) on the mesh 11(d), we use the toolbox included in `FREEFEM++` with the standard parameters. In the same way, we use the BFGS algorithm and the mesh adaptation already implemented in the software `FREEFEM++`. The convergence error of the BFGS algorithm is chosen as $5 \cdot 10^{-4}$. For the mesh adaptation, we pay a special attention to have the more refined mesh but without increasing its number of vertices.

4.2 Numerical results

In this section, we present our numerical results obtained by combining the *TRAC* and the AI methods. We performed six tests with different shapes of the inclusion D . For each test however, we take the propagation speed described in (14).

As a first illustration, we propose the case where the inclusion is a full disk of radius λ . On Figure 12, we show the exact unknown coefficient and the recovered coefficient in the whole domain

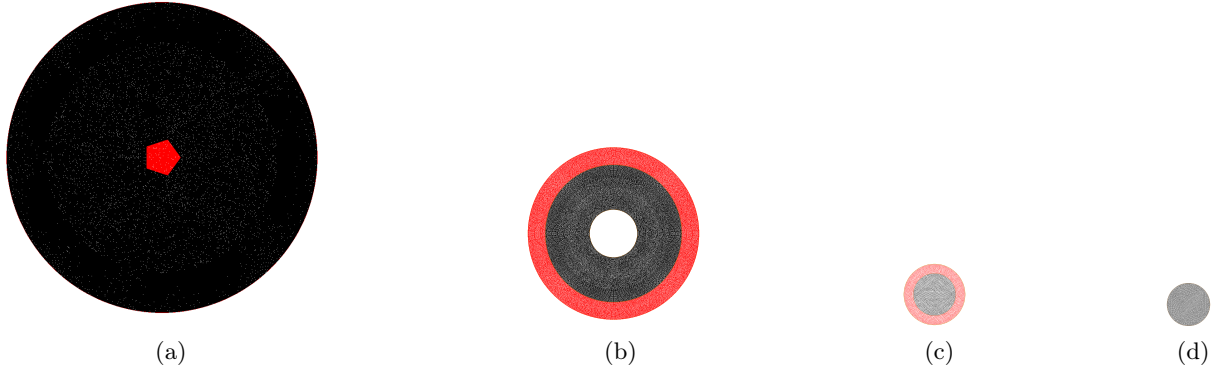


Figure 11: Illustration of the reduction of the computational domain: (a) mesh for the forward problem, conformed to the inclusion D (here a pentagone), radius of the computational domain $R = 10\lambda$, 138678 vertices; (b) mesh for the *TRAC* method, conformed with the SRA and the subdomain B , radius $R = 5\lambda$, 31383 vertices; (c) mesh for the inverse problem in \tilde{B} , conformed with the domain B , radius $R = 2\lambda$, 2448 vertices; (d) mesh to recover the coefficient p in B , radius $R = 1.4\lambda$, 3573 vertices.

Ω . This is to show that at this scale, both results are very similar. On Figure 13, we display the results of the successive iterations of the AI methods doing a zoom on B , where we actually solved the inverse problem. This test is performed with the exact data, i.e. by assuming we know the total field in the whole domain. We did not execute the *TRAC* method as a first step here. In practice, we interpolate the forward total field in the correct mesh to solve then the inverse problem by the AI method. On the top line of Figure 13, we show the two-dimensional view and on the bottom the corresponding three-dimensional view. Figure 13(a) is the result of the 0^{th} step with the Laplace operator eigenfunctions basis (9). Then Figure 13(b) illustrates the first step, using a matrix A with exponent $q = 1$, in (11). In the same spirit, Figures 13(c) and 13(d) are the second and third steps respectively with $q = 2$ for the matrix A and then with $q = 2$ and anisotropy for the matrix A . Moreover, at each step, we choose the Tikhonov regularization term α such that both terms in the functional J introduced in (8) have the same value at the initialization of the step. This implies that the value of α is decreasing at each step. The results presented on Figure 13 are really significative. We indeed observe the progress of the method and the improvement of the reconstruction of the shape and the properties of the inclusion. Especially, we are able to find a good approximation of the shape from the zeroth step, but the coefficient is openly oscillating. After each iteration, the solution is smoother and smoother, but without losing the gradient that marks the shape of the inclusion.

For the test of the λ -radius disk, we also performed the combination of the *TRAC* method and the AI method. The results are displayed on Figure 15. This time, we use the signal reconstruction and the reduction of the size of the computational domain given by the *TRAC* method. On this Figure, the top line is used to show the 2D-view, the middle line shows the corresponding 3D-view and on the bottom line, we present the relative L^2 error in the coefficient, computed as follows :

$$\text{error} = \frac{\int_B |p - p_{ex}|^2 dx}{\int_B |p_{ex}|^2 dx},$$

where p_{ex} is the exact coefficient. Figure 15(a) is actually the exact coefficient p_{ex} , given as a reference. Then Figure 15(b) is the result obtained with the exact data, i.e. the *TRAC* method is not used as a first step. We assume that we know the forward total field in $\Omega \setminus B$. We propose this

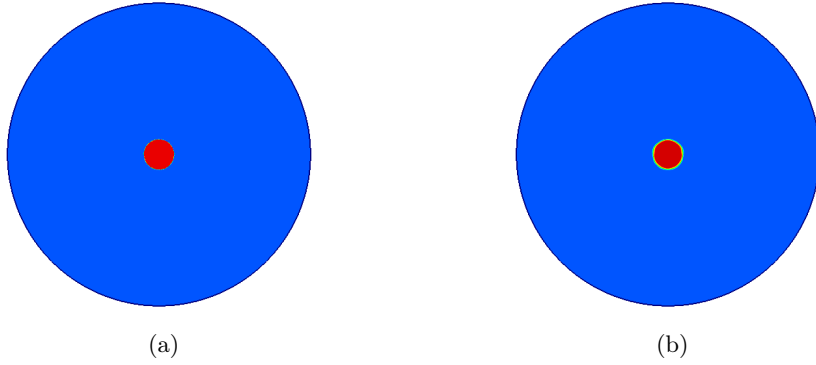


Figure 12: Result of the Adaptive Inversion method in the entire domain Ω : (a) the exact coefficient, (b) the recovered coefficient at final step.

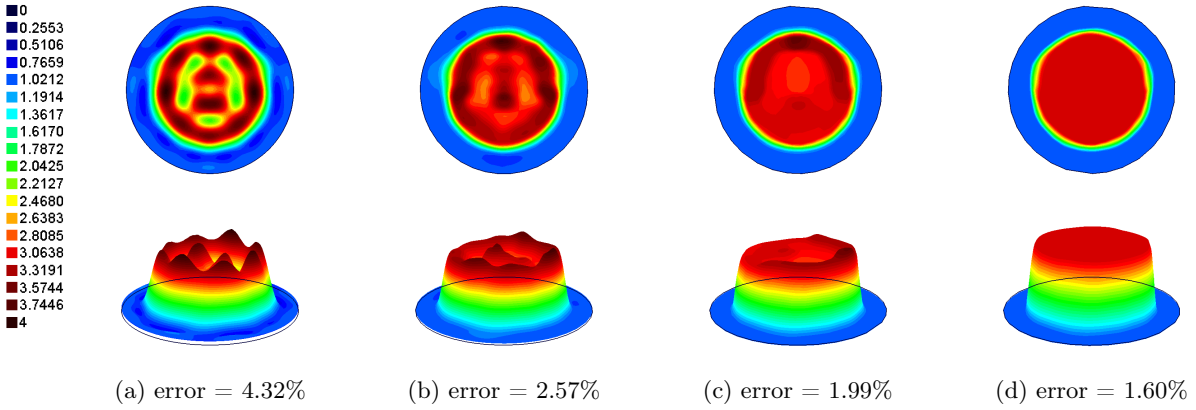


Figure 13: Shape and properties reconstruction of a penetrable disk by using the AI method: (a) Result obtained at step 0. (b) Result obtained at step 1. (c) Result obtained at step 2. (d) Result obtained at step 3 with anisotropy.

test to emphasize the role of the *TRAC* method. We want here to show that the results obtained with the *TRAC* data are as satisfying as with the exact ones. Figures 15(c) and 15(d) illustrate the shape and property reconstruction by the AI method after the *TRAC* method respectively without noise on the recorded data and with 20% level of noise. Once more, the results are satisfactory. The shape is correctly reconstructed, if we take into account that the AI method allows to find a smooth function associated to our piecewise constant coefficient. On the pictures, we have superimpose the shape of the exact coefficient to the recovered one in order to better compare, but obviously this shape was an unknown of the reconstruction. Note that the scale is the same for all pictures, and thus the reconstructed coefficient has the desired intensity: outside the inclusion $c^2 = 1$ and inside the inclusion $c^2 = 3$.

You can also enjoy results for a pentagon on Figure 16, a holed ellipse on Figure 17, two disjoint ellipses on Figure 18, a fish on Figure 19 and a star on Figure 20. All those Figures are composed as Figure 15 described above. The third test corresponds to a case where c is not constant inside the inclusion and we could also have a non piecewise constant function. Once more, all the tests are quite satisfactory. Notice however that we are limited by the size of the inclusions which are here of the same order as the wavelength (Rayleigh limitation). Non convex shapes and strong angles

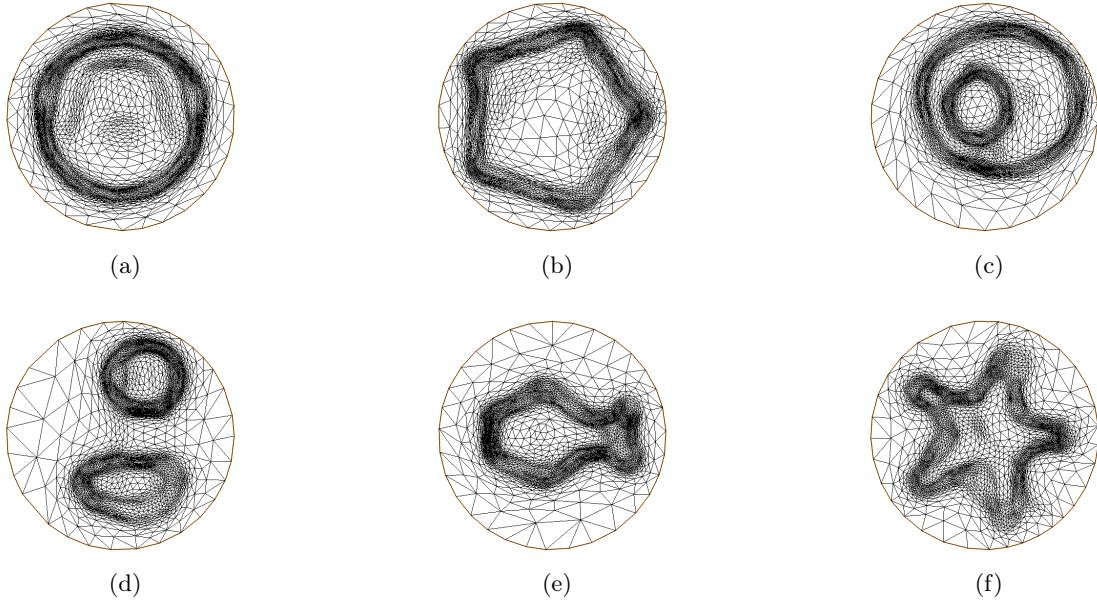


Figure 14: Meshes built with `FREEFEM++` after adaptation by the AI method.

(as for the fish and the star) are harder to reconstruct. To get a better resolution in these cases, we can execute the AI method with more than $K = 100$ eigenfunctions. The more eigenfunctions you take to perform the AI method, the better you can recover small details.

Finally, on Figure 14 we display the adapted mesh for each test, at the end of the global process. One can clearly observe that the mesh is refined close to the boundary of the inclusion and very coarse elsewhere. Moreover those meshes keep the same number of nodes as the original one, when we start the process.

4.3 Comments and conclusion

Here we give some numbers to have an idea of the cost of our strategy in the case of the pentagon. To create once the synthetic data with a 138678 nodes mesh and 2263 time steps, the CPU time is of 1200 s. We perform then the *TRAC* method with CPU time equal to 2503 s and the AI method with a CPU time of 9588 s for the first step, 4094 s for the second step, 1868 s for the third step and 1169 s for the last step. This gives us finally a total CPU time equal to almost 6 hours for the whole process. Remember from §4.1 that thanks to the *TRAC* method, we have been able to reduce the computational time of the forward problem by more than 500. Without using the *TRAC* method, one might have to solve the inverse problem in the whole computational domain of the forward problem. And in the AI method, we need to solve several times the forward problem (almost 200 times in the zeroth step). Despite this huge reduction, the CPU time remains high. We could reduce it more by taking coarser meshes, less eigenfunctions in the basis and ask for less convergence in the minimization process, but leading then to less precise results.

Moreover let us precise that the choice of subdomain B to perform the *TRAC* method does not require too many trials. Thanks to the classical time reversal, we can easily have an approximation of the location of inclusion D . As B does not need to be too close to the inclusion, we may find a satisfying subdomain B in one shot. This can be validated thanks to criteria developed with the

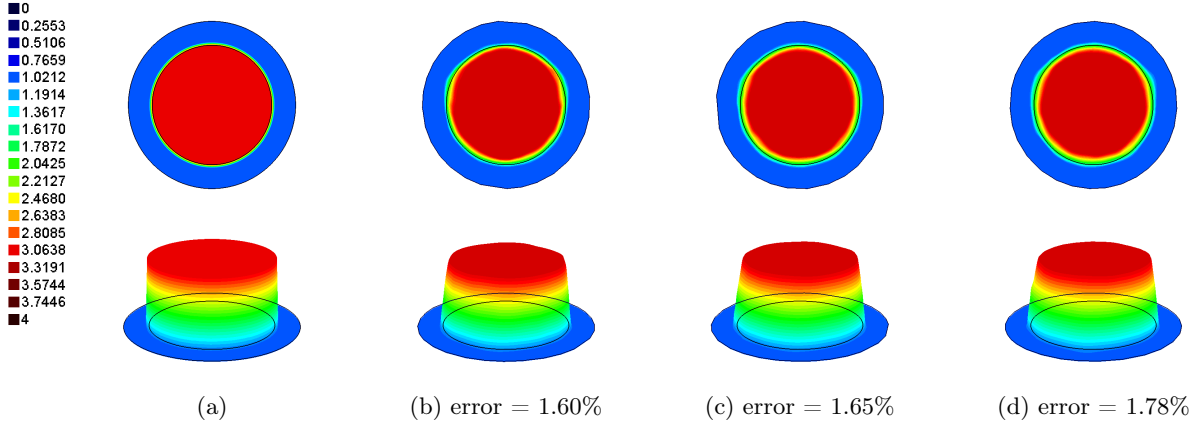


Figure 15: Shape and properties reconstruction of a penetrable disk by using both *TRAC* and AI methods: (a) Propagation speed profile inside and outside the inclusion. (b) Result obtained with exact data. (c) Result obtained with 0%-noisy *TRAC* data. (d) Result obtained with 20%-noisy *TRAC* data.

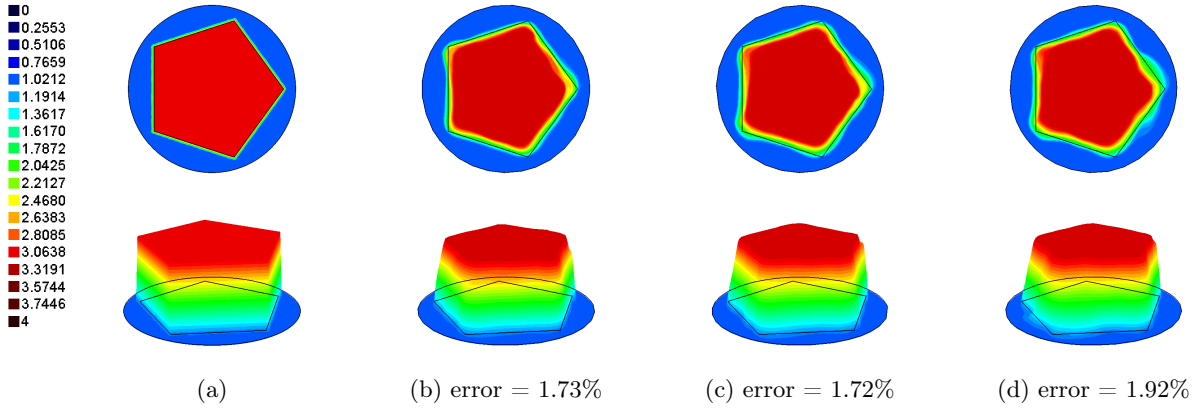


Figure 16: Shape and properties reconstruction of a penetrable pentagon by using both *TRAC* and AI methods: (a) Propagation speed profile inside and outside the inclusion. (b) Result obtained with exact data. (c) Result obtained with 0%-noisy *TRAC* data. (d) Result obtained with 20%-noisy *TRAC* data.

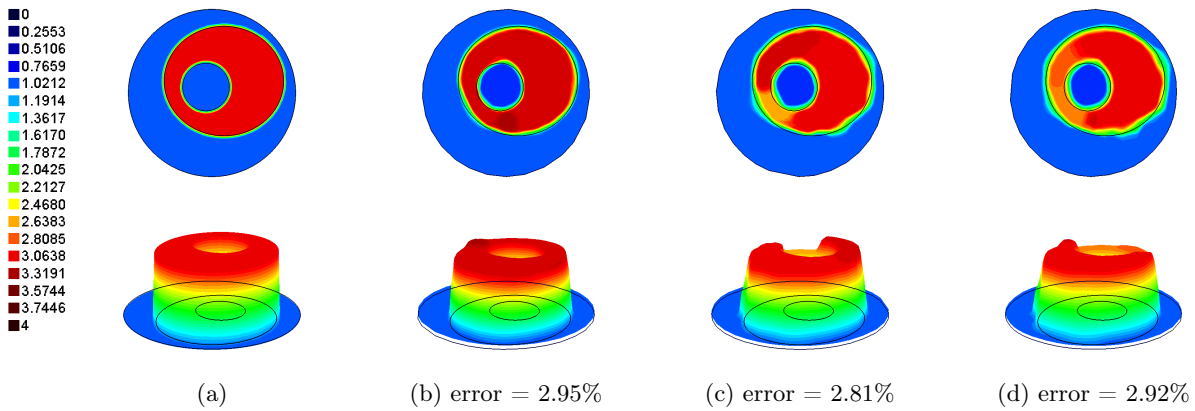


Figure 17: Shape and properties reconstruction of a holed ellipse by using both *TRAC* and AI methods: (a) Propagation speed profile inside and outside the inclusion. (b) Result obtained with exact data. (c) Result obtained with 0%-noisy *TRAC* data. (d) Result obtained with 20%-noisy *TRAC* data.

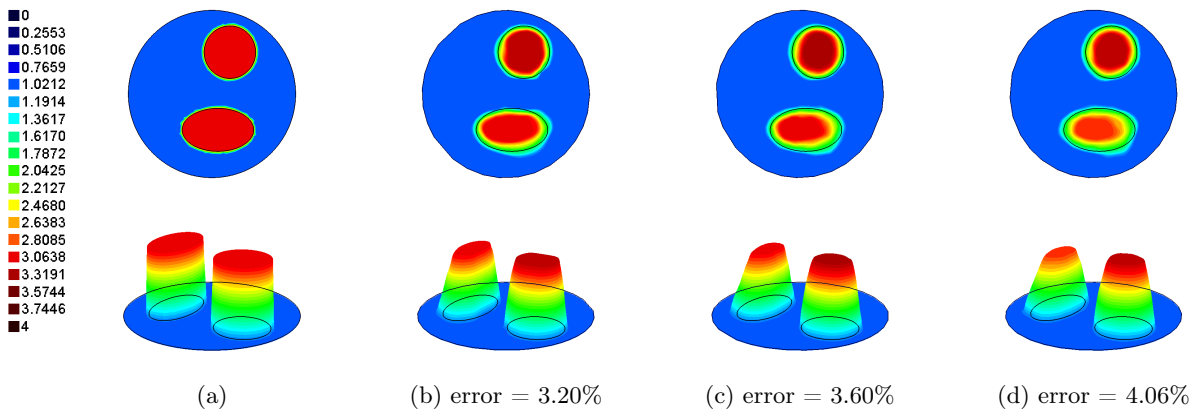


Figure 18: Shape and properties reconstruction of two penetrable ellipses by using both *TRAC* and AI methods: (a) Propagation speed profile inside and outside the inclusion. (b) Result obtained with exact data. (c) Result obtained with 0%-noisy *TRAC* data. (d) Result obtained with 20%-noisy *TRAC* data.

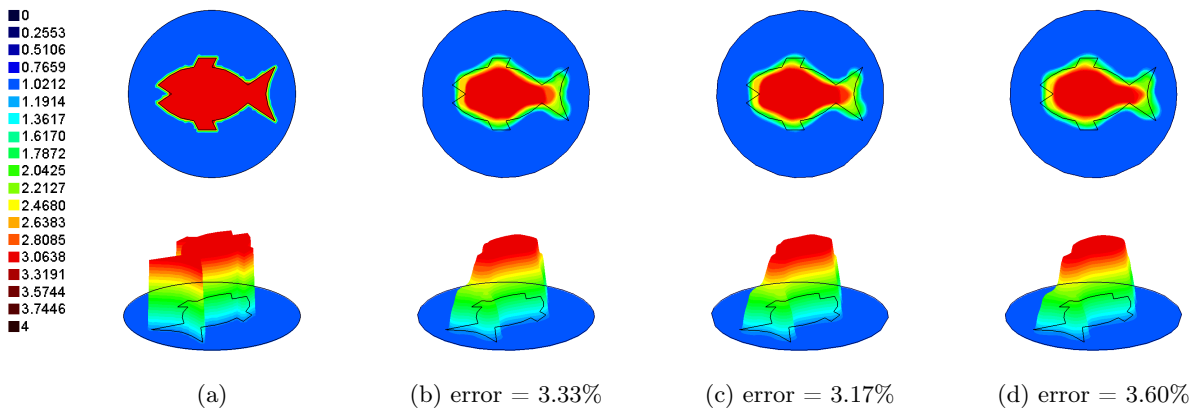


Figure 19: Shape and properties reconstruction of a penetrable fish by using both *TRAC* and AI methods: (a) Propagation speed profile inside and outside the inclusion. (b) Result obtained with exact data. (c) Result obtained with 0%-noisy *TRAC* data. (d) Result obtained with 20%-noisy *TRAC* data.

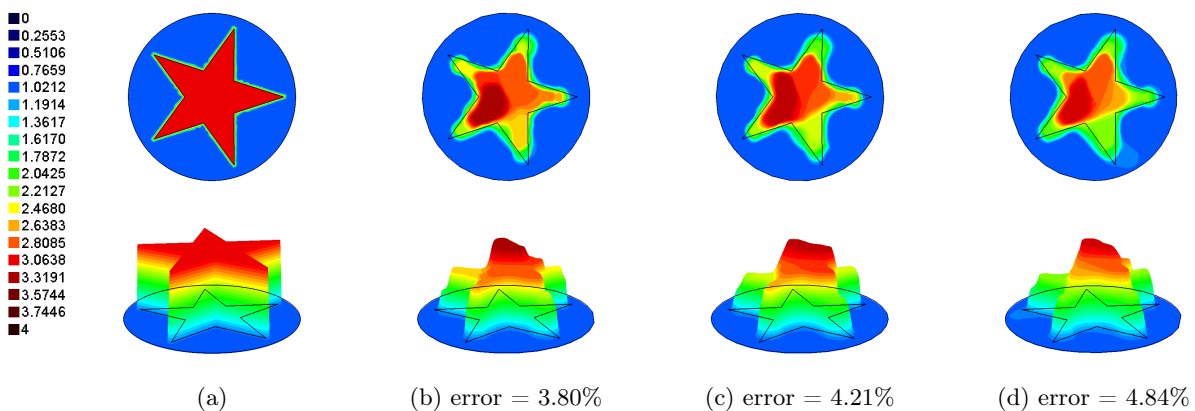


Figure 20: Shape and properties reconstruction of a penetrable star by using both *TRAC* and AI methods: (a) Propagation speed profile inside and outside the inclusion. (b) Result obtained with exact data. (c) Result obtained with 0%-noisy *TRAC* data. (d) Result obtained with 20%-noisy *TRAC* data.

TRAC method. Thus this first step will not increase the computational cost.

Finally, we are optimistic in improving our method to overcome the Rayleigh limitation and also to reconstruct non-homogeneous inclusions.

Acknowledgements

The authors want to thank warmly Frédéric Nataf and Franck Assous for their support and advices throughout this work.

References

- [1] H. Ammari and H. Kang. *Reconstruction of Small Inhomogeneities from Boundary Measurements*. Springer, 2005.
- [2] X. Antoine, H. Barucq, and A. Bendali. Bayliss-turkel like radiation conditions on surfaces of arbitrary shape. *J. Math. Anal. Appl.*, 229:184–211, 1999.
- [3] F. Assous, M. Kray, and F. Nataf. Time Reversed Absorbing Condition in the Partial Aperture Case. *Wave Motion*, 49(7):617–63, 2012.
- [4] F. Assous, M. Kray, F. Nataf, and E. Turkel. Time reversed absorbing conditions. *Comptes Rendus Mathematiques*, 348(19-20):1063–1067, 2010.
- [5] F. Assous, M. Kray, F. Nataf, and E. Turkel. Time Reversed Absorbing Condition: Application to inverse problem. *Inverse Problems*, 27(6):065003, 2011.
- [6] L. Baudouin, A. Mercado, and A. Osses. A global Carleman estimate in a transmission wave equation and application to a one-measurement inverse problem. *Inverse Problems*, 23(1):257–278, 2007.
- [7] A. Bayliss and E. Turkel. Radiation boundary conditions for wave-like equations. *Comm. Pure Appl. Math.*, 33(6):707–725, 1980.
- [8] F. Ben Hassen, K. Erhard, and R. Potthast. The singular sources method for 3D inverse acoustic obstacle scattering problems. *IMA Journal of Applied Mathematics*, 75(1):1–16, 2010.
- [9] J. R. Berryhill. Wave-equation datuming. *Geophysics*, 44(206):132944, 1979.
- [10] L. Borcea, G. Papanicolaou, C. Tsogka, and J. Berryman. Imaging and time reversal in random media. *Inverse Problems*, 18(5):1247, 2002.
- [11] M. Burger and S. J. Osher. A survey on level set methods for inverse problems and optimal design. *European Journal of Applied Mathematics*, 16(02):263–301, 2005.
- [12] F. Cakoni and D. L. Colton. *Qualitative methods in inverse scattering theory: an introduction*. Interaction of mechanics and mathematics series. Springer, 2006.
- [13] M. Cassier and C. Hazard. Multiple scattering of acoustic waves by small sound-soft obstacles in two dimensions: mathematical justification of the foldy–lax model. *Wave Motion*, 50(1):18–28, 2013.

- [14] M. Cheney. The linear sampling method and the MUSIC algorithm. *Inverse Problems*, 17(4):591–595, 2001.
- [15] D. Colton, J. Coyle, and P. Monk. Recent developments in inverse acoustic scattering theory. *SIAM Rev.*, 42(3):369–414 (electronic), 2000.
- [16] D. Colton and A. Kirsch. A simple method for solving inverse scattering problems in the resonance region. *Inverse Problems*, 12(4):383–393, 1996.
- [17] M. de Buhan and A. Osses. A stability result in parameter estimation of the 3D viscoelasticity system. *C. R. Acad. Sci. Paris, Ser. I* 347:1373–1378, 2009.
- [18] M. de Buhan and A. Osses. Logarithmic stability in determination of a 3D viscoelastic coefficient and a numerical example. *Inverse Problems*, 26(9):95006, 2010.
- [19] A. J. Devaney. Super-resolution processing of multi-static data using time reversal and MUSIC. Northeastern University Preprint, 2000.
- [20] B. Engquist and A. J. Majda. Absorbing boundary conditions for the numerical simulation of waves. *Math. Comp.*, 31(139):629–651, 1977.
- [21] M. Fink and M. Tanter. Multiwave imaging and super resolution. *Phys. Today*, 63(2):28–33, 2010.
- [22] M. Fink, F. Wu, D. Cassereau, and R. Mallart. Imaging through inhomogeneous media using time reversal mirrors. *Ultrasonic Imaging*, 13(2):199 – 199, 1991.
- [23] J.-P. Fouque, J. Garnier, G. Papanicolaou, and K. Sølna. *Wave propagation and time reversal in randomly layered media*, volume 56 of *Stochastic Modelling and Applied Probability*. Springer, New York, 2007.
- [24] P. J. Frey and P. L. George. *Le maillage facile*. Hermès Science, Paris, 2003.
- [25] M. J. Grote. Nonreflecting boundary conditions for elastodynamic scattering. *J. Comput. Phys.*, 161(1):331–353, 2000.
- [26] M. J. Grote and J. B. Keller. Exact nonreflecting boundary conditions for the time dependent wave equation. *SIAM J. Appl. Math.*, 55(2):280–297, 1995.
- [27] M. J. Grote and J. B. Keller. Nonreflecting boundary conditions for Maxwell’s equations. *J. Comput. Phys.*, 139(2):327–342, 1998.
- [28] S. Gutman and M. Klibanov. Iterative method for multidimensional inverse scattering problems at fixed frequencies. *Inverse problems*, 10:573–599, 1994.
- [29] H. Haddar, A. Lechleiter, and S. Marmorat. An improved time domain linear sampling method for Robin and Neumann obstacles. *Applicable Analysis*, 2013.
- [30] F. Hecht. *FreeFem++*. Numerical Mathematics and Scientific Computation. Laboratoire J.L. Lions, Université Pierre et Marie Curie, <http://www.freefem.org/ff++/>, 3.7 edition, 2010.
- [31] M. Ikehata. Reconstruction of an obstacle from the scattering amplitude at a fixed frequency. *Inverse Problems*, 14(4):949–954, 1998.

- [32] O. Y. Imanuvilov and M. Yamamoto. Global lipschitz stability in an inverse hyperbolic problem by interior observations. *Inverse Problems*, 17:717–728, 2001.
- [33] V. Isakov. On uniqueness in the inverse transmission scattering problem. *Comm. Partial Diferential Equations*, 15:1565–1587, 1990.
- [34] A. Kirsch. The MUSIC-algorithm and the factorization method in inverse scattering theory for inhomogeneous media. *Inverse Problems*, 18(4):1025–1040, 2002.
- [35] A. Kirsch and R. Kress. Uniqueness in inverse obstacle scattering. *Inverse Problems*, 9:285–299, 2007.
- [36] M. V. Klibanov and M. Yamamoto. Lipschitz stability of an inverse problem for an acoustic equation. *Appl. Anal.*, 85:515–538, 2006.
- [37] C. Larmat, J.-P. Montagner, M. Fink, Y. Capdeville, A. Tourin, and E. Clévéde. Time-reversal imaging of seismic sources and application to the great Sumatra earthquake. *Geophys. Res. Lett.*, 33, 2006.
- [38] A. Lechleiter. The factorization method is independent of transmission eigenvalues. *Inverse Problems and Imaging*, 3(1):123–138, 2009.
- [39] C. D. Lines and S. N. Chandler-Wilde. A time domain point source method for inverse scattering by rough surfaces. *Computing*, 75(2):157–180, 2005.
- [40] L. Liu, K. He, X. Xie, and J. Du. Image enhancement with wave-equation redatuming: application to GPR data collected at public transportation sites. *J. Geophys. Eng.*, 4:139–147, 2007.
- [41] M. Medvinsky and E. Turkel. On surface radiation conditions for an ellipse. *JCAM*, 234:1647–1655, 2009.
- [42] M. Medvinsky, E. Turkel, and U. Hetmaniuk. Local absorbing boundary conditions for elliptical shaped boundaries. *J. Comput. Phys.*, 227(18):8254–8267, 2008.
- [43] N. Mordant, C. Prada, and M. Fink. Highly resolved detection and selective focusing in a waveguide using the D.O.R.T. method. *J. Acoust. Soc. Am.*, 105(5):2634–2642, 1999.
- [44] W. A. Mulder. Rigorous redatuming. *Geophysical Journal International*, 161(2):401–415, 2005.
- [45] R. Potthast. A survey on sampling and probe methods for inverse problems. *Inverse Problems*, 22(2):R1, 2006.
- [46] R. Potthast. *Point Sources and Multipoles in Inverse Scattering Theory*. Chapman & Hall/CRC Research Notes in Mathematics. Taylor & Francis, London, 2010.
- [47] C. Prada and M. Fink. Eigenmodes of the time reversal operator: a solution to selective focusing in multiple-target media. *Wave Motion*, 20(2):151–163, 1994.
- [48] J. Sylvester and G. Uhlmann. A global uniqueness theorem for an inverse boundary value problem. *Ann. Math.*, 125:153–169, 1987.
- [49] A. Tarantola. *Inverse Problem Theory And Methods For Model Parameter Estimation*. Society for Industrial and Applied Mathematics, 2005.