

Supporting Information Available

A Molecular Picture of the Adsorption of Glycine in Mesoporous Silica through NMR Experiments Combined with DFT-D Calculations

Nicolas Folliet^{1,2}, Christel Gervais^{1*}, Dominique Costa³, Guillaume Laurent¹, Florence Babonneau¹, Lorenzo Stievano⁴, Jean-François Lambert², Frederik Tielens^{2*}

Table S1: Porosity Characteristics (BET Surface: S_{BET} , Porous volume: V_{p} , and average pore diameter) for unloaded and loaded MCM-41.

| Sample | S_{BET} ($\pm 10 \text{ m}^2 \cdot \text{g}^{-1}$) | Average pore diameter ($\pm 2 \text{ \AA}$) | V_{p} ($\pm 0.05 \text{ cm}^3 \cdot \text{g}^{-1}$) |
|------------|---|---|--|
| MCM-41 | 1060 | 33 | 1.1 |
| Gly-MCM-41 | 830 | 29 | 0.7 |

Figure S1: Nitrogen adsorption-desorption isotherms for both a) calcined MCM-41 and b) sample loaded with glycine.

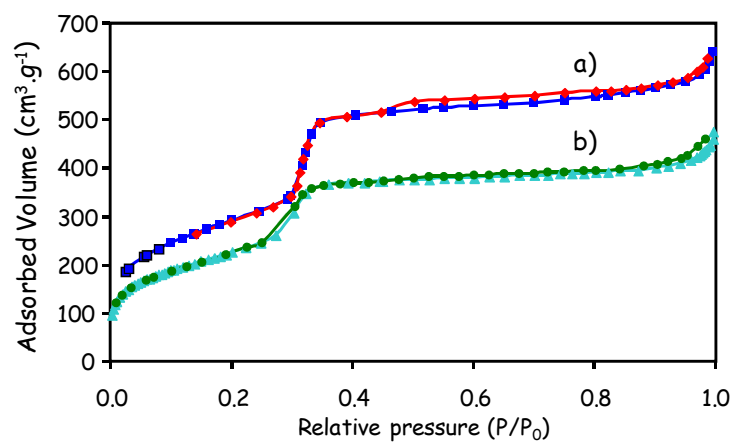


Figure S2: Experimental ¹³C a) MAS and b) CP MAS NMR spectra of glycine in MCM-41 sample.

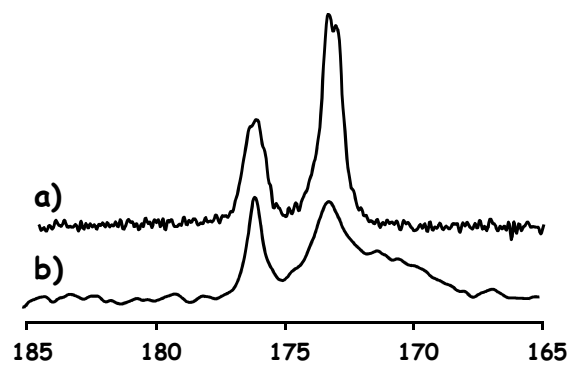


Figure S3: Experimental ^1H MAS NMR spectrum of glycine in MCM-41 sample.

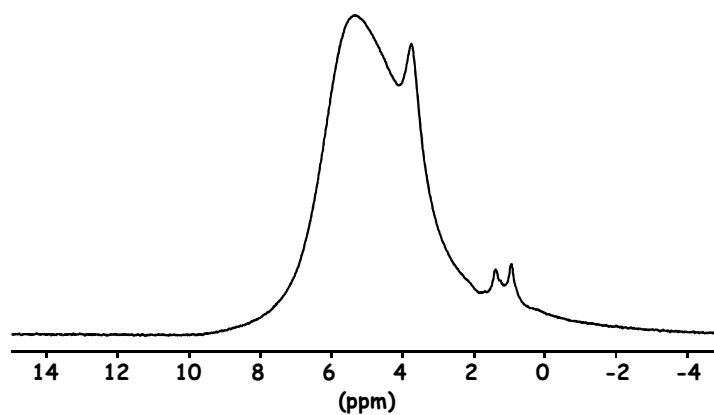


Figure S4: Experimental and deconvoluted ^{29}Si MAS NMR spectrum of calcined MCM-41 sample.

