



**HAL**  
open science

## **Maturation stress generation starts before the formation of the G-layer in poplar tension wood**

Bruno Clair, Tancrède Alméras, Gilles Pilate, Delphine Jullien, Junji Sugiyama, Christian Riekkel

### ► **To cite this version:**

Bruno Clair, Tancrède Alméras, Gilles Pilate, Delphine Jullien, Junji Sugiyama, et al.. Maturation stress generation starts before the formation of the G-layer in poplar tension wood. COST E50 final conference Systems Biology for Plant Design, 2009, Netherlands. 2p. hal-00797323

**HAL Id: hal-00797323**

**<https://hal.science/hal-00797323>**

Submitted on 6 Mar 2013

**HAL** is a multi-disciplinary open access archive for the deposit and dissemination of scientific research documents, whether they are published or not. The documents may come from teaching and research institutions in France or abroad, or from public or private research centers.

L'archive ouverte pluridisciplinaire **HAL**, est destinée au dépôt et à la diffusion de documents scientifiques de niveau recherche, publiés ou non, émanant des établissements d'enseignement et de recherche français ou étrangers, des laboratoires publics ou privés.

ORAL PRESENTATION

## Maturation stress generation starts before the formation of the G-layer in poplar tension wood

Bruno Clair<sup>1</sup>, Tancrede Almérás<sup>1</sup>, Gilles Pilate<sup>2</sup>, Delphine Julien<sup>1</sup>, Junji Sugiyama<sup>3</sup>, Christian Riekkel<sup>4</sup>

<sup>1</sup> Laboratoire de Mécanique et Génie Civil (LMGC), CNRS, Université Montpellier 2, CC48, Pl. E. Bataillon, 34095 Montpellier, France.

<sup>2</sup> INRA, UR588 Amélioration, Génétique et Physiologie Forestières, CS 40001 Ardon, F-45075 Orléans Cedex 2, France.

<sup>3</sup> Research Institute for Sustainable Humansphere, Kyoto University, Uji, Kyoto 611-0011, Japan

<sup>4</sup> Synchrotron Radiation Facility, B.P.220, F-38043 Grenoble Cedex, France

\*E-mail: [clair@lmgc.univ-montp2.fr](mailto:clair@lmgc.univ-montp2.fr)

### Introduction

Tension wood is widespread in organs of woody plants. During its formation, it generates large tensile mechanical stress, called maturation stress [1]. This stress performs essential biomechanical functions such as optimizing the stem mechanical resistance, performing adaptive movements and ensuring long-term stability of growing plants. The mechanism generating this stress is not yet fully understood, although various hypotheses have recently been proposed [2-6]. In order to discriminate between these hypotheses, we investigated structural changes in cellulose microfibrils along sequences of xylem cell differentiation in tension and normal wood of poplar.

### Material and Methods

Experiments have been performed on artificially tilted poplar trees (*Populus deltoides* x *P. trichocarpa* cv. I45-51). Samples were kept as 40-cm long stem segment to keep the mechanical state of the wood as it is *in planta*. Thanks to synchrotron radiation micro-diffraction (ID13 - ESRF) [7], diffraction patterns were recorded every 10  $\mu\text{m}$  from bark to mature wood (Fig.1). Analysis of diffraction patterns allows measuring the evolution of the angle (on 200 diffraction peak) and lattice spacing ( $d_{004}$ ) of crystalline cellulose associated to the deposition of successive cell wall layers.

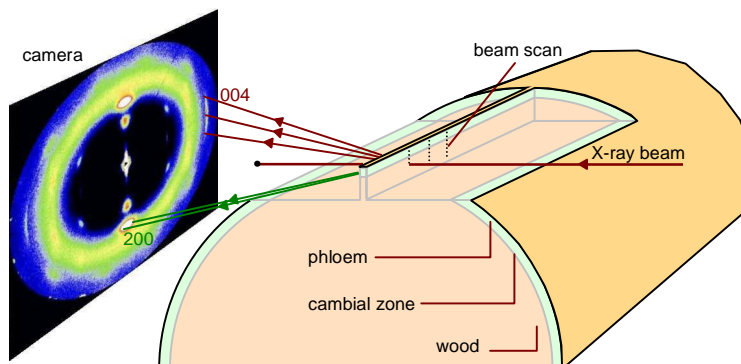


Fig. 1: setup of the experiment.

## Results

Profiles of normal and tension wood were very similar in early development stages corresponding to the formation of the S1 and the outer part of the S2 layer. The microfibrils angle in the S2 layer was found lower in its inner part than in its outer part, especially in tension wood. In tension wood only, this decrease occurred together with an increase in cellulose lattice spacing, and this happened before the G-layer is visible. The relative increase in lattice spacing was found close to usual value of maturation strains, strongly suggesting that microfibrils of this layer are put into tension and contribute to the generation of maturation stress.

## REFERENCES

1. Archer, R.R., Growth stresses and strains in trees. 1986, Berlin/Heidelberg/New York: Springer Verlag. 240 p.
2. Chang, S.S., et al., Mesoporosity as a new parameter in understanding of tension stress generation in trees. *Journal of Experimental Botany*, in press 2009.
3. Bowling, A.J. and K.C. Vaughn, Immunocytochemical characterization of tension wood: Gelatinous fibers contain more than just cellulose. *American journal of botany*, 2008. 95(6): p. 655-663.
4. Goswami, L., et al., Stress generation in the tension wood of poplar is based on the lateral swelling power of the G-layer. *Plant Journal*, 2008. 56(4): p. 531-538.
5. Mellerowicz, E.J., P. Immerzeel, and T. Hayashi, Xyloglucan: the molecular muscle of trees. *Annals of botany*, 2008. 102(5): p. 659-665.
6. Nishikubo, N., et al., Xyloglucan endo-transglycosylase (XET) functions in gelatinous layers of tension wood fibers in Poplar--A glimpse into the mechanism of the balancing act of trees. *Plant and cell physiology*, 2007. 48(6): p. 843-855.
7. Riekkel, C., New avenues in X-ray microbeam experiments. *Reports on Progress in Physics* 2000. 63: p. 233-262.