



HAL
open science

Segmentation of elevation images based on a morphology approach for agricultural clod detection

Olivier Chimi Chiadjeu, Sylvie Le Hegarat-Masclé, Edwige Vannier, Richard Dusséaux, Odile Taconet

► **To cite this version:**

Olivier Chimi Chiadjeu, Sylvie Le Hegarat-Masclé, Edwige Vannier, Richard Dusséaux, Odile Taconet. Segmentation of elevation images based on a morphology approach for agricultural clod detection. 5th International Congress on Image and Signal Processing (CISP), 2012, Oct 2012, Chongqing, Sichuan, China. pp.701-705, 10.1109/CISP.2012.6469994 . hal-00797133

HAL Id: hal-00797133

<https://hal.science/hal-00797133>

Submitted on 5 Mar 2013

HAL is a multi-disciplinary open access archive for the deposit and dissemination of scientific research documents, whether they are published or not. The documents may come from teaching and research institutions in France or abroad, or from public or private research centers.

L'archive ouverte pluridisciplinaire **HAL**, est destinée au dépôt et à la diffusion de documents scientifiques de niveau recherche, publiés ou non, émanant des établissements d'enseignement et de recherche français ou étrangers, des laboratoires publics ou privés.

SEGMENTATION OF ELEVATION IMAGES BASED ON A MORPHOLOGY APPROACH FOR AGRICULTURAL CLOUD DETECTION

Olivier Chimi-Chiadjeu, Edwige Vannier
Richard Dusséaux, Odile Taconet
Université de Versailles St Quentin
IPSL/LATMOS, 11 boulevard d'Alembert
78280 Guyancourt, France

Sylvie Le Hégarat-Masclé
Université Paris-Sud, IEF (ACCIS)
91405 Orsay cedex, France

Abstract—This study deals with the segmentation of altitude or elevation images, i.e. images of the distance (z -coordinate) between the surface or objects and the camera plane. Specifically to our soil science application, these images are acquired on agricultural surfaces in order to evaluate their roughness. The cloddy structure being a key factor to characterize soil roughness, the elevation image analysis aims at detecting and identifying the clods as accurately as possible. Now, rather than defining a new segmentation algorithm, we propose to transform the input data so as to take into account the different criteria characterizing the clod objects, namely the relative altitude and a function of the gradient norm. The proposed approach was validated on three agricultural surfaces (two synthetic and one real) and the results compared to those of an algorithm previously developed specifically for the clod identification problem.

keywords—Depth image, segmentation, watershed, agricultural soil, cloddiness.

I. INTRODUCTION

Surface micro-relief has a large impact on soil properties and geomorphologic processes such as water infiltration or runoff, substrate movement and soil erosion. Therefore, many studies have dealt with surface roughness, soil height changes and soil cloddiness characterization [1], [2]. To monitor soil features, some studies have focused on the potential of remote sensing imagery, in particular radar imagery (e.g. [3], [4], [5]). Now, remote sensing sensor resolution varies from the meter (high resolution) to the kilometer (coarse resolution), so that they are sensitive to statistical properties of the surface. In order to link the remote sensing observations to physical soil features, as well as for modelling purpose, the surface should be characterized at fine scale (centimeter).

The measure of the micro-relief of the soil surface at millimetre resolution for an area in the meter square range is now a widely used practice. It is performed either with laser scanners [6], [7] or with stereo photogrammetry [8] [9]. The heights measured on a regular grid enable to get a three dimension (3D) digital elevation model (DEM) of the surface. In the present study, we address the problem of interpreting high resolution DEM images of the soil surface. In particular,

we focus on the identification of clods or big aggregates (namely with diameter greater than 7 mm) in a reliable and automatic way. Such a problem of object identification can be addressed as a segmentation problem under the constraint that regions superimpose with clods, except for the region representing soil surface (defined as the surface supporting the clods).

Image segmentation aims at partitioning an image into regions, i.e. clusters of connected pixels. In classic segmentation, the clusters of pixels represent a slightly more organized information than the pixel level, and correspond to an intermediate level towards the detection of objects. Main criteria considered to achieve the segmentation are either so-called 'region', i.e. based on the characteristics of regions, or so-called 'boundary', or both. For instance, the best known 'regions' based algorithms are the region growing, or split and merge [10] algorithms. In the latter, the initial image partition is modified by merging or dividing regions, based on the characteristics (area, brightness, color, texture, etc.) of each region, measured by various indices such as homogeneity, contrast, variance, interquartile range, entropy etc. Generally more robust are the algorithms that take into account different criteria based on 'boundary' and 'region'. For example, the functional proposed by Mumford & Sha includes features based on both pixel intensity and constraints on geometric regularity (e.g. minimizing the whole length of the boundaries). The parameter weighting these different criteria in the functional is a scale parameter in the sense that it controls the minimal size of the regions and their final number [11]. Let us mention finally the segmentation by watershed transform derived from mathematical morphology [12]. In this approach, the image is viewed as a topographic surface with pixel intensity representing the altitude. From the regional minima, a progressive immersion of the topographic surface in water is simulated in order to find the watershed boundaries: the frontiers where the waters of the various watersheds meet, i.e. the boundaries geodesically equidistant from the image minima. Classically, to segment an image I in uniform regions bounded by edges corresponding to high gradient, the

watershed segmentation applies to the image of the gradient norm, $|\nabla I|$. Indeed on $|\nabla I|$, local minima are located in homogeneous areas and the local maxima on areas presenting rapid variations of grey levels. In this study, we discuss why the watershed segmentation principle is close to our problem and how the *a priori* features of a clod can be introduced as segmentation criteria.

In the remainder of the paper, Section II presents the considered problem (soil surfaces) and the proposed approach, results are then gathered in Section III, and conclusions in Section IV. Note that the proposed segmentation will apply to any image similar to our DEM images (in particular depth images), provided that the researched objects may be characterized by properties of convexity or concavity of the image function restricted to the subdomains defined by the regions.

II. CLODS SEGMENTATION

Let us first briefly present the *a priori* physical model of the clod in order to determine the features of the researched regions. Although the definition of a clod remains a debated issue in the community of soil scientists, we use the following definition: the clods form aggregates, roughly comparable to half ellipsoids, placed on the soil surface. This definition induces three main characteristics: (i) the clod points have a higher altitude than the soil surface points around the clod, (ii) on the clod boundaries, the altitude varies rapidly, and (iii) each clod has one local maximum.

Previous features should therefore characterize the regions that will result from the image segmentation. Here the considered image is the altitude image obtained by stereovision (see Fig. 1). Hence previous features of the clod points in terms of altitude directly transfer as pixel value features. As seen in the introduction, classic segmentation algorithms are based on a criterion of homogeneous regions (and possibly additional criterion). They are therefore suitable for finding regions characterized by high homogeneity. Yet, on the altitude image, the clods are not characterized by homogeneous values (the altitude varies inside the clod), and the clod borders are not characterized by local maxima of the gradient values (at the clod base, the altitude varies only toward the inside of the clod). Thus, conventional methods applied in the conventional way are not suitable. However, the watershed approach applied

to an adequate transformation of the image seems appropriate for our problem: basically, if one multiplies the altitudes by (-1) , we obtain an image where the minima are the tops of clods. Using a so basically image transform several phenomena occur that affect the performance of segmentation. For instance, if the soil surface was horizontal, the boundaries would be located at equal geodesic distance from the clod peak points rather than at clod basis. Now, actually the soil surface is not even flat leading to over-segmentation of the image and false detection of clods (see Fig. 2).

To achieve the proposed solution, we split our problem into two sub-problems. The first one is performing the segmentation so that the clods coincide with some regions of the segmentation. The second one is selecting the clods among the regions, since the partition of the image that results from the segmentation process also contains a (some) region(s) representing the soil between clods. Now, the clods are mainly characterized by elevations ‘higher’ than the local elevation of the soil surface and the contours rather serve to position finely the boundary of the clod. Both criteria are gathered in a functional. Since the watershed segmentation will place the contours at local maxima of the image, the functional should be such that its local minima correspond to the clod peaks, and its maxima to the clod bases. From the physical model of the clod, the form of the image for segmentation should be decreasing with the altitude pixel value, and increasing with the gradient norm value. We choose the following form:

$$H(x, y) = -f(x, y) + \beta \times G(x, y), \quad (1)$$

where x and y are pixel coordinates in the image (indices of column and row), $f(x, y)$ is the pixel value in the altitude image, $G(x, y)$ the pixel value in the gradient (here, computed by finite differences) pseudo-altitude image and β is a positive parameter. G image is obtained computing the gradient norm on a pseudo-altitude image F by:

$$\begin{cases} F(x, y) = \frac{D}{1 + \exp(-\lambda(f(x, y) - \bar{f}))} & \text{if } f(x, y) > \bar{f}, \\ F(x, y) = f(x, y) & \text{otherwise,} \end{cases} \quad (2)$$

where D is the altitude image contrast (difference between maximum and minimum values over the image), \bar{f} is the mean of the altitude values and λ is the sigmoid parameter. The motivation for F is that the bases of clods are located close and

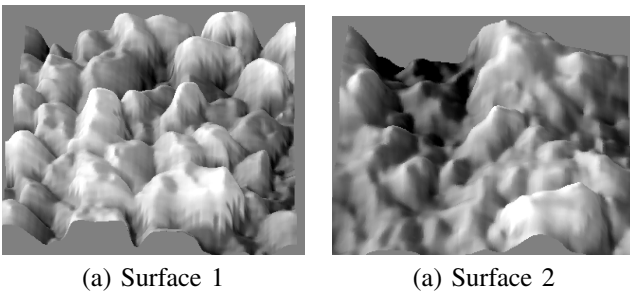


Figure 1. 3D representation of altitude images of the surfaces 1 and 2.

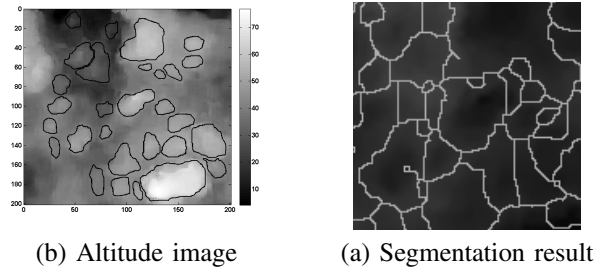


Figure 2. Surface 2: Result of watershed segmentation applied to the opposite of the image.

above the soil surface, and that they will be detected using the gradient information. Thus, this latter should be reinforced for altitude values both close and above the soil surface altitude that is approximated by the mean altitude over the imaged area.

From (1) and (2), H image (that will be used for watershed segmentation) depends on two parameters: the first one, β , adjusts the weight of the gradient (or slope) information compared to the altitude one, and the second one, λ , adjusts the emphasis of the gradient above the average level of the soil surface. In our study, these two parameters have been fitted in an ad hoc way.

Having performed segmentation, the following step removes the regions that do not check the clod features, namely an altitude both significant and greater than the soil surface altitude. For these tests, the median values of the altitude are computed for each clod k either inside the clod $f_{med}^{\int_k}$ or on the boundary of the clod $f_{med}^{\oint_k}$. The condition $f_{med}^{\int_k} - f_{med}^{\oint_k} > \tau$, where τ is a threshold parameter, ensures that the clod is sufficiently prominent (and thus ‘significant’), and the condition $f_{med}^{\int_k} > \bar{f}$ ensures that the clod is not located in a hole. The three parameters (β , λ , τ) are fitted knowing the reference boundaries.

III. RESULTS

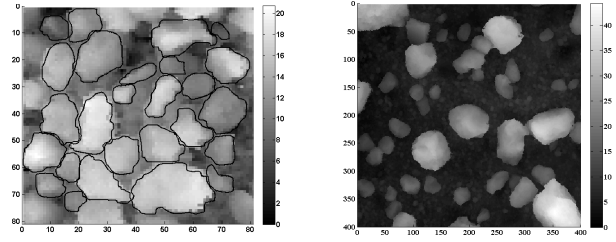
A. Data bases

Our approach has been tested on three altitude images of bare agricultural soil surfaces. The first surface is an artificial one, made in the laboratory by laying small sieved clods on a flat surface. Its size equals to $80 \times 80\text{mm}^2$ with a resolution of 1mm on the three axes. The second surface was recorded in an actual field. Its size is equal to $200 \times 200\text{mm}^2$ with a resolution of 1mm along the horizontal plane axes and 1.1mm on the vertical axis. The third surface is an artificial flat surface, having a size equal to $400 \times 400\text{mm}^2$ with a resolution of 0.5mm on the three axes. It contains sieved clods, showing a greater range of clod size and spacing than surface 1. For this study, only clods of a diameter greater than 7mm were considered, leading to 26 clods on the first surface, 29 on the second surface, and 73 clods on the third surface. Manual delineation of individual clods, what we call reference boundaries, was completed by a soil scientist for surface 1 and surface 2, and by photointerpretation for surface 3 (for which the boundaries of the clods are easily identifiable). Fig. 3 shows the grey level altitude images of the first surface and the third surface (surface 2 was already presented in Fig. 2).

B. Performance measures

To quantify the results, we compute three indices measuring the performance of segmentation, based on the reference boundaries. First, at object level, the accuracy of clod identification is evaluated through two indices: the sensitivity (S_e) and the specificity (S_p) respectively defined by:

$$S_e = \frac{N_{tid}}{N_{true}}, \quad (3)$$



(a) Surface 2

(b) Surface 3

Figure 3. Altitude images of the surfaces 1 and 3. On surface 1, the reference boundaries of the clods are plotted.

$$S_p = \frac{N_{tid}}{N_{ob}}, \quad (4)$$

where N_{tid} denotes the number of identified true clods (right positives), N_{true} the total number of true clods (right positives + false negatives) and N_{ob} the number of identified objects (right positives + false positives). S_e (sensitivity) represents the rate of clods properly identified (i.e. the probability that an actual clod is effectively detected), whereas S_p (specificity) represents the quality of the identifications made (i.e. the probability that a detected clod is an actual clod). The estimation of S_e and S_p requires a step of association between regions and reference clods. It is done following the principle of ‘mutual agreement’: when a region R_i intersects several clods C_j , it selects to the clod which has the largest intersection ($R_i \leftrightarrow \arg \max_{C_j / |C_j \cap R_i| > 0} |C_j \cap R_i|$ where $|A|$ denotes the cardinal of the A set), and when several regions select a same clod, the clod selects the region with has the largest intersection is retained ($C_i \leftrightarrow \arg \max_{R_j / |C_i \cap R_j| > 0} |C_i \cap R_j|$). Thus a false positive is a region which has only empty intersections with reference clods or non null intersections with clods that do not select it. When a clod is selected by N regions (case of over-segmentation of the clod), it leads to one more right positive and $N - 1$ more false positives.

Then, at pixel level, the overlap rate qualifies the precision of localization as follows:

$$T_{detect/ref} = \frac{|S_{detect} \cap S_{ref}|}{|S_{detect} \cup S_{ref}|}, \quad (5)$$

where S_{detect} is the image sub-domain that is the union of the detected clods, S_{ref} is the image sub-domain that is the union of the reference clods (established by the soil scientist). $T_{detect/ref}$ varies between 0 and 1 (perfect identification).

C. Contour-based algorithm (used for comparison)

In order to compare our approach with an existing method, we recall that relying on the assumption that clods can be identified in the image as structures presenting enclosed level lines introduced in [8]. Precisely, a ‘level line’ is a set of connected pixels having the same value in the image. Two level lines are said ‘enclosed’ if one of them is included in the set of pixels interior to the second one. Assuming that near clod bases, the gradients are among the highest,

the level lines are only computed on the set of pixels with a high value of gradient. Then, algorithm [8] is based on three steps: (i) selection of the pixels of high gradient values, (ii) for these pixels, selection of the level lines both closed and having a length greater than the minimal length, and (iii) hierarchization of these level lines, based on an inclusion ordering relationship. Finally, the clod boundary is the biggest level line, according to inclusion ordering, including only one clod center.

D. Segmentation results

For surface 1 and surface 2, best performance identification was achieved respectively for parameters (β, λ, τ) equal to $(2.33, 0.2, 1)$ and $(1.44, 0.2, 1)$. Conversely to the two last parameters, at this stage, we were unable to set *a priori* the parameter β that depends on the standard deviation of the surface ($\sigma_1 = 3.8, \sigma_2 = 11.8$). Fig. 4 shows the modified image altitude F , and its gradient norm image G . The highest gradient norm values are well located on the basis of the clods.

For surface 1, Fig. 5 shows the results of the watershed algorithm applied to H images (modified input data) and of the contour-based approach. Most clods are well detected and located, few are over-segmented, and few are missed. The reference contains 26 actual clods. 23 clods were found by the proposed algorithm. Among these 23 clods, there is one false detection, 20 clods were detected and localized in a more or less fine way and one was over-segmented in two regions (False Positive, $FP = 1 + 1$, True Positive, $TP = 20 + 1$). Five actual clods were completely missed (False Negative, $FN = 5$). With the contour-based approach, 21 clods were found, which are as follows: there is one false detection, 18 clods are correct and one is over-segmented, whereas 7 were completely missed ($FN = 7, FP = 1 + 1, TP = 18 + 1$). The quantitative performance values of segmentation are shown in Table I. For surface 1, S_e and S_p are very

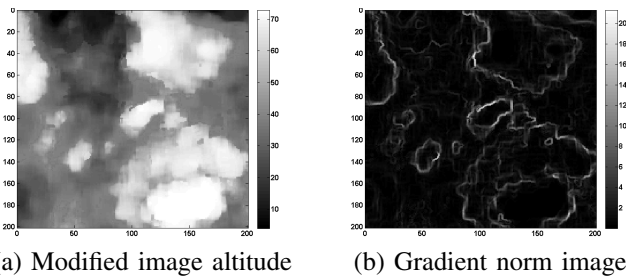


Figure 4. Transformation of the initial altitude image to reinforce gradient at the clod basis; case of surface 2.

TABLE I
PERFORMANCE OF SEGMENTATION

	Methods	S_e	S_p	$T_{detect/ref}$
Surface 1	Watershed algorithm	80.7%	91.3%	0.73
	Contour-based approach	73.1%	90.5%	0.52
Surface 2	Watershed algorithm	82.8%	85.7%	0.61
	Contour-based approach	79.3%	88.5%	0.49



(a) Watershed algorithm (b) Contour-based approach

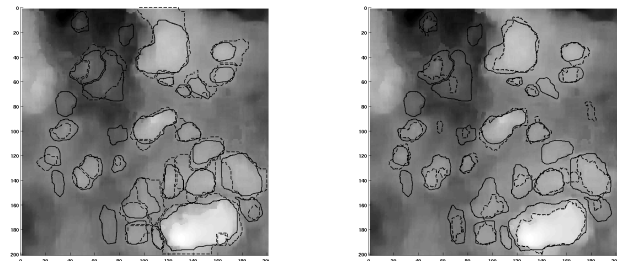
Figure 5. Surface 1: Reference boundaries of the clods (solid line), and results (dashed line) using watershed algorithm (a) or contour-based approach (b).

high, underlying the efficiency of the clod identification at object level. $T_{detect/ref}$ is equal to 0.73 with the watershed segmentation and 0.52 with the contour-based approach, that corresponds to satisfying and relatively satisfying values. The proposed segmentation method outperforms the contour-based method for S_p, S_e and $T_{detect/ref}$.

For the surface 2, Fig. 6 shows the results of the watershed algorithm applied to H images and of the contour-based approach. The segmentation is again satisfactory. S_e and S_p are still very high, underlying the performance of the clod identification on a real soil surface for which the clods are less contrasted than sieving (see fig. 1 and Tab. I). $T_{detect/ref}$ is equal to 0.61 with the watershed segmentation and to 0.49 with the contour-based approach, that also corresponds to relatively satisfying values and shows the higher complexity of segmenting a DEM recorded in an actual field. S_p and S_e have the same order of value but, $T_{detect/ref}$ is better with the watershed algorithm. On that surface, there is less difference between both algorithms.

E. Robustness analysis

In this section, we aim at studying the sensitivity of the proposed method to its parameters, in particular the β one since the (λ, τ) parameters have already been fixed to $(0.2, 1)$. For this study, let us consider the third surface. For surface 3 the standard deviation is $\sigma_3 = 8.6$. That value is close to the value of standard deviation of surface 2, $\sigma_2 = 11.8$. Therefore *a priori* the choice of the parameter beta would be the same as for surface 2 ($\beta = 1.44$). Anyway, we also test $\beta = 2.33$ and $\beta = 0.82$ to check the algorithm sensitivity to β .



(a) Watershed algorithm (b) Contour-based approach

Figure 6. Surface 2: Reference boundaries of the clods (solid line), and results (dashed line) using watershed algorithm (a) or contour-based approach (b).

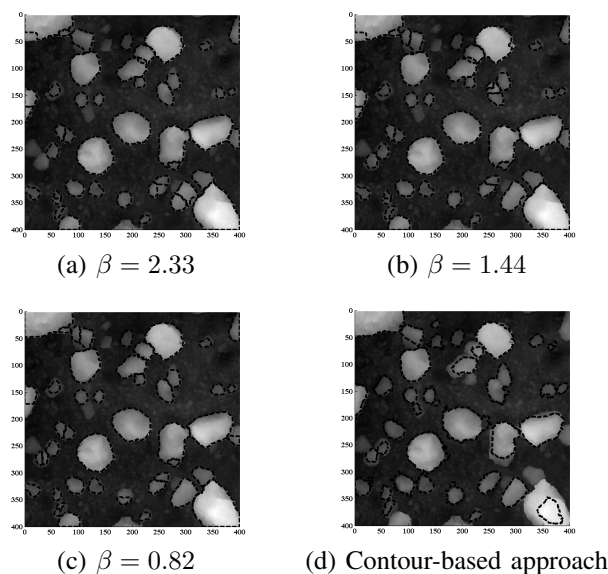


Figure 7. Surface 3: Results obtained using the watershed algorithm (a-c) and the contour-based approach (d).

Fig. 7 shows the results of the contour-based approach and of the watershed algorithm applied to H images on surface 3, for the three values of β tested. First we note that the results seems very close. They only differ in terms of small clods not always detected (e.g. the clod centered at coordinates (25, 275)), and some oversegmentation of some small clods (e.g. the clod centered at coordinates (300, 350)). Then, we also note that several small clods are not detected, conversely to the case of the contour-based approach. Now, looking closely at the contour-based approach, we see that the contours are rather imprecise: underestimation of the clod in several cases (in particular the clod centered at coordinates (350, 350)). Thus, we conclude first that watershed segmentation is rather robust at least for the main clods, and second that it is rather precise in terms of clods delineation. These conclusions are quantitatively confirmed by Tab. II that shows the obtained quantitative performance criteria.

IV. CONCLUSION

Having explained why, for our problem of clod identification, classical image processing segmentation methods cannot be applied directly, we describe the proposed solution. It is based on an a priori physical model of the clod conveyed in terms of mathematical properties. This leads to the definition of a new image for applying the classical watershed segmentation. Performance evaluation in terms of clod identification is

TABLE II
ROBUSTNESS OF SEGMENTATION ON SURFACE 3

Methods	S_e	S_p	$T_{detect/ref}$
Watershed algorithm $\beta=0.82$	86.0%	82.2%	0.69
Watershed algorithm $\beta=1.44$	90.6%	82.9%	0.69
Watershed algorithm $\beta=2.33$	73.1%	83.7%	0.68
Contour-based approach	83.7%	100%	0.65

addressed both at object level and at pixel level. Compared to a specific contour-based algorithm previously developed, the proposed approach showed its interest and performance, since clods are much better localized (pixel level) and nearly as well detected (object level). We also test the robustness of the algorithm to its parameters in order to be able to define default values. We find that the surface standard deviation influences the parameter optimal value and can guide its choice.

Further studies will prospect in three directions: first, from the application point of view, we will study a greater number of surfaces, second, we continue exploring an automatic estimation of the method parameters, third, we will apply the proposed segmentation in the case of different applications, e.g. on depth images where the 3D objects are approximately convex (e.g. cars, people in urban environment).

ACKNOWLEDGMENT

The authors would like to thank the Programme National de Télédétection Spatiale (PNTS) to support this study.

REFERENCES

- [1] A.C. Guzha, "Effects of tillage on soil microrelief, surface depression storage and soil water storage," *Soil and Tillage Research*, vol. 76, pp. 105-114, 2004.
- [2] A. Hemmat, I. Ahmadi, A. Masoumi, "Water infiltration and clod size distribution as influenced by ploughshare type, soil water content and ploughing depth," *Biosystems Engineering*, vol. 97, pp. 257-266, 2007.
- [3] S. Le Hégarat-Masclé, M. Zribi, F. Alem, A. Weisse, C. Loumagne, "Soil moisture estimation from ERS/SAR data," *Toward an operational methodology*, *IEEE Transactions on Geosciences and Remote Sensing*, vol. 40, pp. 2647-2658, 2002.
- [4] M. Zribi, S. Le Hégarat-Masclé, C. Otlé, B. Kammoun, C. Guérin, "Surface soil moisture from the synergistic use of the (multi-incidence and multi-resolution) active microwave ERS Wind Scatterometer and SAR data," *Remote Sensing of Environment*, vol. 86, pp. 30-41, 2003.
- [5] N.E.C. Verhoest, H. Lievens, W. Wagner, J. Alvarez-Mozos, M.S. Moran, F. Mattia, "On the soil roughness parameterization problem in soil moisture retrieval of bare surfaces from synthetic aperture radar," *Sensors*, vol. 8, pp. 4213-4248, 2008.
- [6] F. Darboux, C. Huang, "An instantaneous-profile laser scanner to measure soil surface microtopography," *Soil Science Society of America Journal*, vol. 67, pp. 92-99, 2003.
- [7] J. Arvidsson, E. Bolenius, "Effects of soil water content during primary tillage-laser measurements of soil surface changes," *Soil and Tillage Research*, vol. 90, pp. 222-229, 2006.
- [8] O. Taconet, E. Vannier, S. Le Hégarat-Masclé, "A contour-based approach for clods identification and characterization on a seabed surface," *Soil and Tillage Research*, vol. 109, pp. 123-132, 2010.
- [9] O. Chimi-Chiadjeu, E. Vannier, R. Dusséaux, O. Taconet, "Influence of gradient estimation on clod identification on a seabed digital elevation model," *Environmental Engineering Geoscience*, vol. 17, pp. 337-352, 2011.
- [10] R.C. Gonzalez, R.E. Woods, "Digital Image Processing," 2nd Edition, Prentice Hall, New Jersey 2002.
- [11] G. Koepfler, C. Gonzalez, J. Morel, "A multiscale algorithm for image segmentation by variational method," *SIAM Journal on Numerical Analysis*, vol. 31, pp. 282-299, 1994.
- [12] S. Beucher, F. Meyer, "The morphological approach to segmentation: the watershed transformation," In *Mathematical Morphology in Image Processing* (Ed. E. R. Dougherty), pp. 433-481, 1993.