



# A fast method for morphological analysis of laser drilling holes

Matthieu Schneider, Laurent Berthe, Maryse Muller, Rémy Fabbro

## ► To cite this version:

Matthieu Schneider, Laurent Berthe, Maryse Muller, Rémy Fabbro. A fast method for morphological analysis of laser drilling holes. *Journal of Laser Applications*, 2010, 22 (4), pp.5. 10.2351/1.3508232 . hal-00795470

**HAL Id: hal-00795470**

**<https://hal.science/hal-00795470>**

Submitted on 28 Feb 2013

**HAL** is a multi-disciplinary open access archive for the deposit and dissemination of scientific research documents, whether they are published or not. The documents may come from teaching and research institutions in France or abroad, or from public or private research centers.

L'archive ouverte pluridisciplinaire **HAL**, est destinée au dépôt et à la diffusion de documents scientifiques de niveau recherche, publiés ou non, émanant des établissements d'enseignement et de recherche français ou étrangers, des laboratoires publics ou privés.

# A fast method for morphological analysis of laser drilling holes

M. Schneider, L. Berthe, M. Muller, and R. Fabbro

Laboratoire PIMM (CNRS) ARTS et METIERS ParisTech, 151 Boulevard de l'Hopital, 75013 Paris, France

Electronic mail : matthieu.schneider@ensam.eu

This paper presents an original method for analyzing laser drilled holes. The so-called Direct Observation of Drilled hOle (DODO) method is introduced and its applications. The hole characterization that's been made is compared with x-ray radiography and cross-section analysis. Direct Observation of Drilled hole provides instantaneously surface state, geometric shape, as well as recast layer structure, without additional operation. Since no mounting resin is used to embed the sample, the preparation for analysis is simplified and, gives access to a 3D analysis of hole morphology. The principle of this technique consists in positioning the drilling axis on the joint plane of a butt configuration. Surfaces of the two parts of the sample to be joined are polished beforehand, to increase the contact surface, and then holes are drilled in the joint plane. Once the sample is drilled, the two parts are split so that one half of the hole is in each part of the sample. The preparation time of DODO method samples is shorter than the polishing time of the classical method. Moreover the implementation of the DODO method is much easier, for quality control as well as process development in laser drilling. © 2010 Laser Institute of America.

Key words: Laser drilling, morphology, quality control, process development

## I. INTRODUCTION

Laser drilled holes are used in aircraft industries to cool parts of engines working under very high temperatures.<sup>1-6</sup> The gas comes from the combustion chamber with a high temperature. To prevent a premature aging or a partial melt, components must be shielded. Therefore cooling air is blown through drilled holes in turbine components. Because of numerous holes necessary for cooling, processing time has to be as fast as possible.

The principle of laser drilling resides in the focusing of a laser beam of high-power on the workpiece surface, in order to melt and then evaporate the irradiated area. Typically, laser intensity of  $10 \text{ MW cm}^{-2}$  is used to drill the metallic targets.

During the experiments, percussion drilling is performed. The hole is drilled along the optical axis. Figure 1 schematizes in five main steps the thermodynamic effects that drive the drilling process.

On Fig. 1 (1), the irradiated target surface is heated by absorption of laser energy. On Fig. 1 (2), a thin layer is melted. Once the surface temperature gets higher than the vaporization temperature [Fig. 1 (3)], the vapor flow is normal to the surface. The recoil pressure generated by vaporization,<sup>7</sup> exerts a force on the melted surface and starts expelling the melt out of the hole located on the side.

On Fig. 1 (4), the ejected vapor flow is supersonic.<sup>8</sup> Drilling depth is increased and melt ejection becomes vertical [Fig. 1 (4)].

In the last sequence, the hole is drilled through [Fig. 1 (5)]. The melt is ejected through the hole exit and laser interaction stops.

Besides of thermodynamic aspects, absorptivity is modified during the process at  $1064 \text{ nm}$ , with steel, it increases from 35%<sup>9,10</sup> to 80% with incident intensity higher than  $10 \text{ MW cm}^{-2}$ .<sup>11</sup>

The drilled hole diameter is in a  $0.5 \text{ mm}$  range, its depth can reach  $20 \text{ mm}$ , and recast layer is about  $10 \text{ }\mu\text{m}$  thick. Three main characteristics define the quality of these holes: the surface state around the hole entrance of the drilled part, the hole morphology inside the material (diameter, taper, shape), and the recast layer structure (thickness, delamination and cracking). These features are essential to ensure the cooling flow capability and to increase the lifetime of the part. Without sample preparation, only surface state can be observed. The other characteristics are more difficult to discern since they require a precise and detailed preparation of

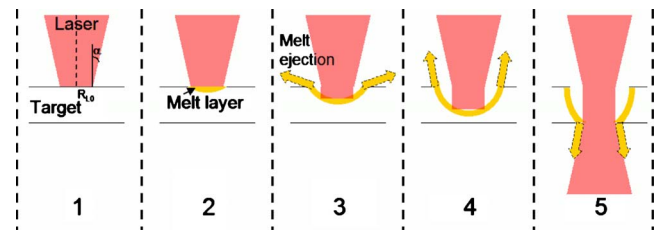


FIG. 1. Schematic representation of laser drilling.  $R_{L0}$  is the laser radius in the focal plan and  $\alpha$  the numerical aperture. During drilling, the surface is heated (1), melted (2) and vaporized. The vapor flow becomes supersonic and the recoil pressure expels the melt layer out of the hole at the side of the focal spot, first horizontally (3) then vertically (4). At the end of drilling, the hole is breaking through (5).

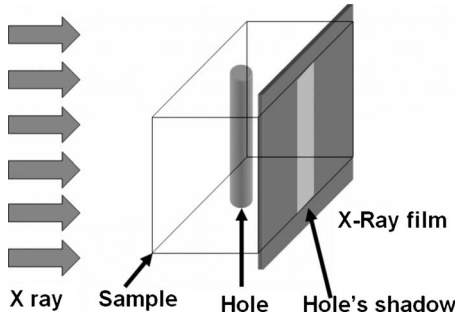


FIG. 2. Schematic representation of x-ray radiography method.

the samples, such as cutting and polishing, and/or expensive equipment such as x-ray radiography device.<sup>1-3</sup>

Because x-ray radiography has a low resolution and longitudinal-section generates measurement errors with few tilts, a statistical analysis of the drilling characteristics according to inherent laser fluctuations or experimental parameters is therefore very difficult to achieve. This major drawback is considered as an obstacle to both industrial development and better understanding of the physical process involved in laser drilling. Moreover these two techniques use specific devices, they cannot be made on laser drilling site, and then require more time, up to several days, to return results after drilling.

This paper describes an original, fast and very simple technique called Direct Observation of Drilled hOle (DODO), allowing the direct observation of the morphology and the recast layer structure of holes drilled by laser which are the main hole features in term of quality. The conventional methods, namely, x-ray radiography and cross-section analysis, are summarily described in part 2. Part 3 presents the DODO method, its advantages and drawbacks compared to other techniques.

The holes were produced with a Trumpf HL201P Nd:Yag laser<sup>12</sup> with the following operational conditions: 1 ms pulse duration, 20 MW cm<sup>-2</sup> power density, the spot diameter is 320  $\mu$ m in the focal plane. The sample material is 1.4404 (316L) standard stainless steel.<sup>13</sup>

## II. PRINCIPLE OF CONVENTIONAL METHODS

### A. X-ray radiography: Nondestructive testing

The radiography is a nondestructive testing method, allowing to watch the shape of the hole drilled in the sample. Its principle is described in Fig. 2. Practically; the drilled sample is located in front of a radiographic paper. The x-ray beam irradiates the whole sample with a normal incidence.

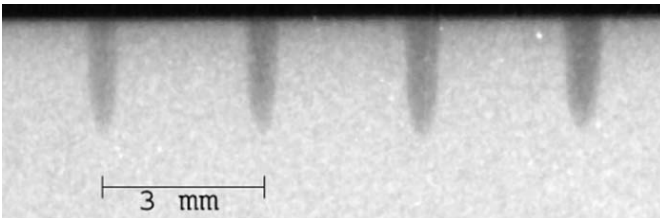


FIG. 3. Typical image from x-radiography. Four holes are visible.

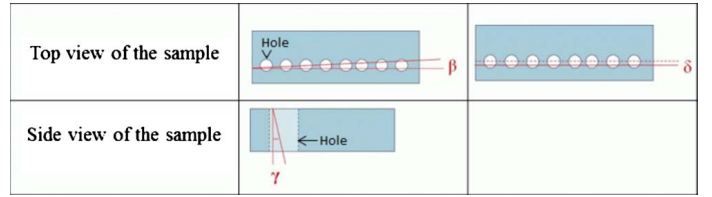


FIG. 4. Schematic representation of cross-section. Shift ( $\delta$ ) is the distance between the longitudinal section and the drilling plane. Tilts are angles between the cross-section plane and drilling plane ( $\alpha$  and  $\beta$ ).

The paper highlights a two-dimensional projection of holes. Figure 3 presents a radiography image of a sample with four holes.

Based on this picture, the global shape, depth and taper of the hole can be determined. Typically, its top diameter is 500  $\mu$ m and its depth is 2 mm. However, recast layer thickness and the presence of possible defects such as delamination and cracks are not clearly seen with the help of this technique.

The accuracy of this method depends on both the resolution and the contrast of the image. The paper quality and the source diameter determine the resolution, which is in best case, in the range of dozens micrometers. The contrast is sensitive to both the exposure time and the sample thickness.

The main advantage of this method is to probe the hole profile without cutting the sample. This nondestructive technique may be used to test a workpiece after drilling. Nevertheless its resolution is lower than that of the other techniques and not allows an measurement of microscopic structure like recast layer thickness. Moreover, the accuracy of measurements such as hole depth depends on the angles between the incidence angle of the drilling axis and the x-ray film.

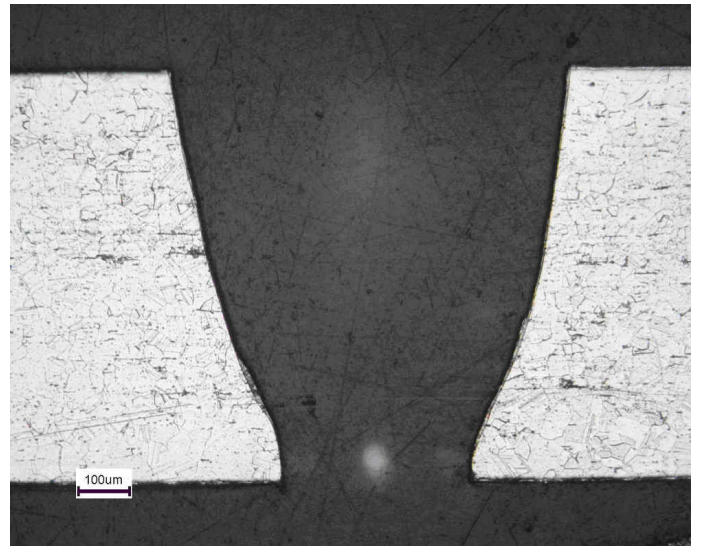


FIG. 5. Image performed with optical microscopy of a cross-section of hole obtained by cross-sectioning technique.

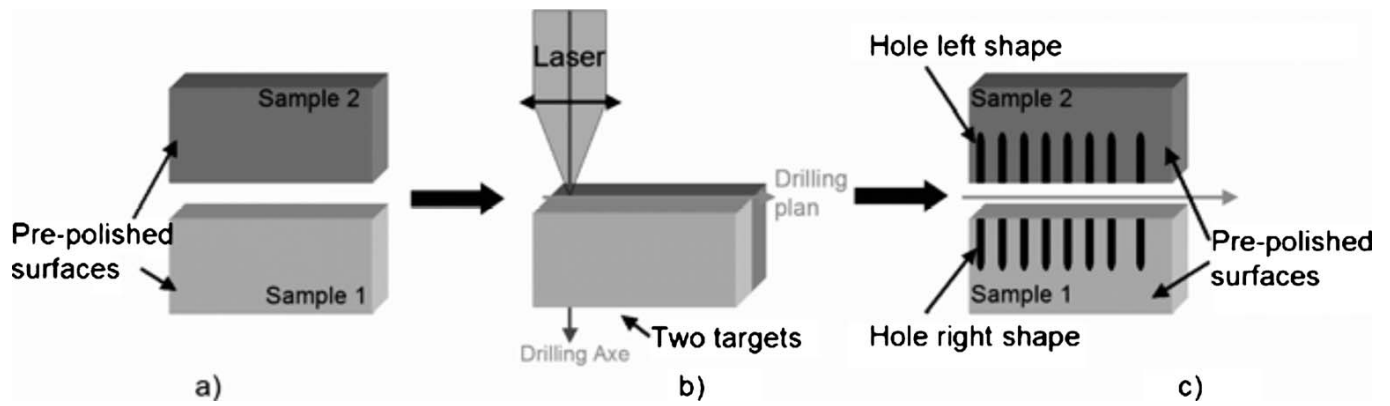


FIG. 6. Principle of the DODO technique. (a) Two samples are polished. (b) They are drilled in butt configuration. Drilling is made on the interface between the two samples. (c) After drilling, the samples are split and two half-holes are revealed on each half of the samples.

## B. Longitudinal-section: Microanalysis

The longitudinal section is the most widespread technique, although it is destructive. This method requires to cut and to polish the sample until the longitudinal-section is located in the drilling axis. The polishing is usually finely performed with a one micron diamond suspension. A chemical solution can be used to reveal the grain boundaries. This technique is very useful in metallurgical analysis, as it allows assessing the material structure such as phase precipitates, grain size, etc. The main advantage of this technique is the accuracy of the measurements in a micrometric scale. In principle, all features of the hole can be measured such as hole profile (diameter, taper, shape), as well as recast layer structure such as thickness, delamination and cracking. However, due to the polishing procedure, this method does not ensure accurately the drilling axis is in the longitudinal section. Figure 4 shows a schematic view of these limits: the shift and double tilts between the drilling plane and the longitudinal-section plane. The mounting resin that is used to guarantee sample integrity all along the polishing procedure, reduces the control of the polishing and allows only a 2D analysis of the longitudinal section. Figure 4 shows a schematic representation of intrinsic measurement errors due the positioning of the longitudinal section. The measurement error is a combination of one shift ( $\delta$ ) and two tilts ( $\beta, \gamma$ ) between the drilling axes plane and the longitudinal section. The relative errors can reach 20% and 40% on, respectively, hole diameter and recast layer thickness for  $\delta = \pm 0,1$  mm and  $\beta = \pm 1^\circ$ . Besides the hole shapes are completely change by a  $\gamma = \pm 0,5^\circ$ .

Consequently, the tilt does not modify the measurements of small length like recast layer thickness and metallographic observations. However, errors make on measurements of the diameter, depth and taper of the holes are depending of the tilt angles. Figure 5 shows an image performed with optical microscopy of a longitudinal-section of a hole done by this technique. More than the x-ray

radiography, this method is highly time consuming for producing metallurgic samples. Typically, only a few holes a day are analyzed.

## III. DODO: DIRECT OBSERVATION OF DRILLED HOLE

This technic is meant to be implemented on prepared samples. Its principle described in Fig. 6 consists in positioning the drilling axis on the joint plane of a butt configuration. Surfaces of both samples are beforehand polished [see Fig. 6(a)] to improve their contact, and then holes are drilled in such a manner that their axis are localized in the joint plane [Fig. 6(b)]. Once the sample is drilled, the two parts are split and a half-hole appears in each one, as can be seen on Fig. 6(c).

The following procedure is used: the parts are performed on a Struers TegraPol 31. The polishing starts at 80 grit, with an adhesive back disk SiC paper, and reaches  $3 \mu\text{m}$  using a DiaPro diamond suspension. Then the two parts are joined, positioned and gripped in a vice. The laser is positioned on the joint plane and holes are drilled.

Consequently, DODO ensures the merging of the drilling axis and of the analysis plane, and thus ensures measurements of the depth and of the conicity of the hole. Figure 7 shows an image of the two samples drilled and split. The figure gives clear evidence of the morphology and the recast layer thickness of the twenty holes. The reproducibility and the evolution of the hole characteristics according to the experimental parameters can be analyzed in one glance.

Figure 8 shows a single hole drilled with the DODO technique. Because no mounted resin was used, the surface state of the inner wall and the 3D shape of the both side of the hole can be analyzed.

Besides, the quality of this method may be checked directly. If the drilling axis is not positioned precisely in the joint plane, the half-holes on each part won't be symmetrical; moreover a top view of the assembled parts will show it.

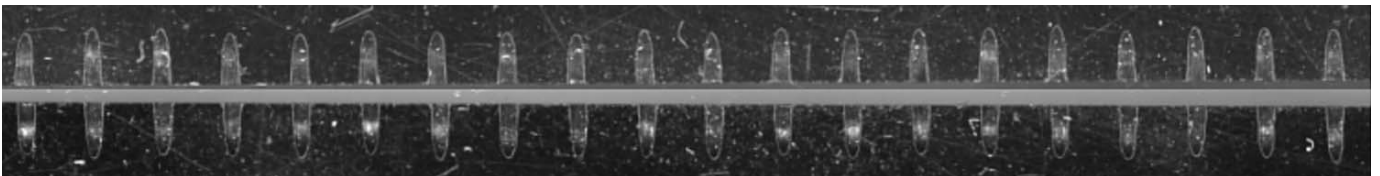


FIG. 7. Optical image of the two samples drilled with the DODO method. The half-holes appear on each sample. All the hole features (diameter, etc.) can be measured and a statistical study is realizable.



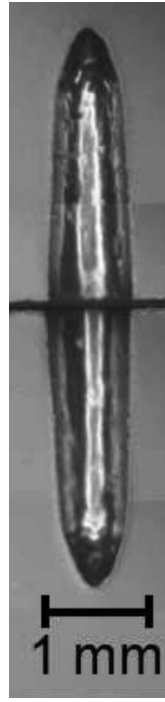


FIG. 8. Optical image of two complementary half-holes revealed by DODO technique.

The quality of the sample preparation may also be checked. The melted metal injected between the two parts during laser drilling will be revealed after the splitting of the sample. It will show that the two parts were not well merged. Figure 9 presents the result when a  $100\ \mu\text{m}$  thick metallic layer is inserted between the two parts on the left side. The melt metal is injected between the interfaces and the six holes on the left have their shapes distorted that reveals here the misuse of the method.

Figure 10 shows two holes drilled with the same laser parameters. The left image is obtained through a conventional longitudinal-section analysis, the right one is obtained through the DODO method. The hole shapes are exactly the same, the results are not modified by the method. Therefore one can conclude that the presence of an interface on the drilling axis does not change the thermal diffusion or the process.

The main advantage of this technique is that results can be returned within relatively short delay, compared to previous methods mentioned in Part II. The analysis plane is not positioned on holes (like in longitudinal section) since the

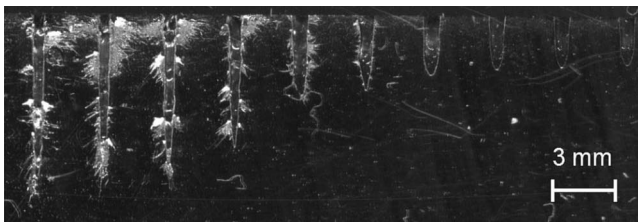


FIG. 9. Images performed with optical microscopy of hole revealed by DODO method. A  $100\ \mu\text{m}$  thick metallic layer was inserted between the two samples on the left side.

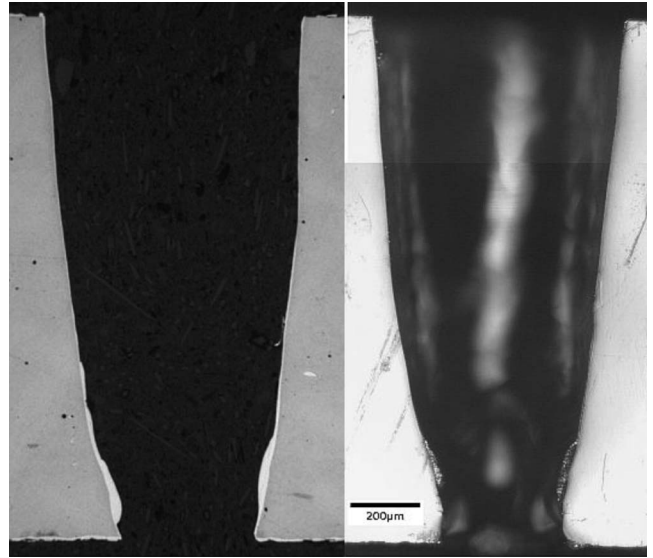


FIG. 10. Comparison between cross-section image (on the left hand side) and DODO image (on the right hand side). Images are obtained from two holes drilled with the same experimental parameters.

holes are drilled on the analysis plane (like in DODO), hence the splitting of the sample reveals a fast overview of the hole drilled in one glance. Moreover, the interpretation can be made on the drilling site which allows making faster statistical studies on industrial site for better development, control and repeatability of the process. More precise measurements can be made with optical devices like microscope or even a numerical scanner on hole characteristics. By comparison, with a longitudinal-section analysis results are obtained in a half day on one single hole with one polishing procedure, whereas using DODO method 70 holes are analyzed in the same polishing procedure time with less error measurement. Moreover a misuse of the procedure is clearly revealed by the DODO method itself. In term of investment, a polishing machine is used like for the conventional longitudinal-section analysis.

Figure 11 shows the hole profile evolution as a function of the laser intensity. Holes drilled have two different shapes called V and U profiles. For the holes drilled with an intensity below  $8\ \text{MW cm}^{-2}$  the corresponding profile is close to a V. For higher intensities holes have an U profile. These observations have helped to complete the Semak and Matsunawa model<sup>7</sup> with a new relation between the hole diameter and the melt velocity.

#### IV. SUMMARY

This paper presents an original analysis technique called Direct Observation of Drilled hole (DODO) which allows characterizing laser drilled holes. DODO method allows measuring all hole characteristics like the hole morphology (diameter, taper, profile), and the recast layer structure (thickness, delamination, and cracking). Compared to traditional methods DODO ensures control of the analysis plane since the holes are drilled directly on it. Consequently, no operation such as cutting and polishing are necessary after the drilling. An interpretation of the result can be made on

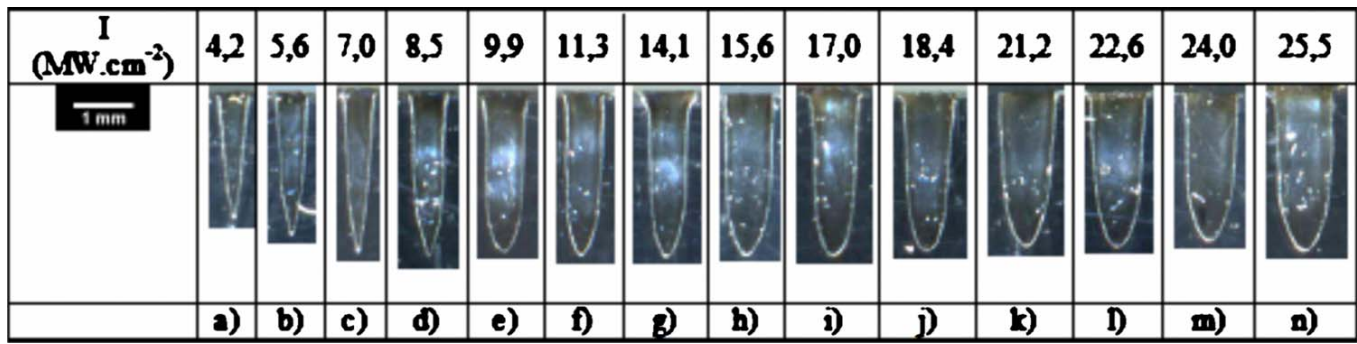


FIG. 11. Hole profile evolution as a function of peak power for a 1 ms pulse duration. Hole are drilled in standard stainless steel.

drilling site. Furthermore DODO suits especially well routine test applications in a mass production context as it is less expensive, easier and faster to apply than the current state-of-the-art techniques of the field. Finally, fundamental interest is found in the DODO technique as it can provide deeper insight into the complex physical aspects of laser drilling, by giving access to fine features of hole profile evolution with laser irradiation parameters.

## ACKNOWLEDGMENTS

This work has been supported by Commissariat à l'Energie Atomique (CEA-France) and Trumpf Laser for HL201P Laser facility and Agence Nationale pour la Recherche.

<sup>1</sup>A. Horn, R. Weichnehan, S. Albrecht, E. W. Kreutz, J. Michel, M. Niesen, V. Kostykin, W. Schulz, A. Etzkorn, K. Bozin, E. Lugscheider, and R. Poprawe, "Microholes in Zirconia coated Ni-super alloys for transpiration cooling of turbine blades," Proceedings of SPIE-High-Power Laser Ablation III, edited by Claude R. Phipps (2000), Vol. 4065; pp. 218–226.

<sup>2</sup>M. Jeandin, P. Forget, P. Lechervy, and D. Valera, "Laser drilling application to ceramic coated alloy," *Mater. Manuf. Processes* **4**, 263–272 (1989).

<sup>3</sup>K. T. Voisey and T. W. Clyne, "Laser drilling of cooling holes through plasma sprayed thermal barrier coatings," *Surf. Coat. Technol.* **176**, 296–306 (2004).

<sup>4</sup>C. A. McNally, J. Folkes, and I. R. Pashby, "Laser drilling of cooling holes in aeroengines: state of the art and future challenges," *Mater. Sci. Technol.* **20**, 805–813 (2004).

<sup>5</sup>R. Poprawe, I. Kelbassa, K. Walther, M. Witty, D. Bohn, and R. Krewinkel, "Optimising and manufacturing a laser-drilled cooling hole geometry for effusion-cooled multi-layer plates," Proc. of ISROMAC-12, Paper No. 20091, Honolulu, USA, 2008.

<sup>6</sup>I. Kelbassa, P. Albus, J. Dietrich, and J. Wilkes, "Manufacture and Repair of Aero Engine Components using Laser Technology," Proc. of PICALO, Paper No. 405, Beijing, China, 2008.

<sup>7</sup>V. V. Semak and A. Matsunawa, "The role of recoil pressure in energy balance during laser materials processing," *J. Phys. D* **30**, 2541–2552 (1997).

<sup>8</sup>M. Schneider, R. Fabbro, L. Berthe, and M. Muller, "Gas investigation on laser drilling," *J. Laser Appl.* (to be published).

<sup>9</sup>F. Dausinger and J. Shen, "Energy coupling efficiency in laser surface treatment," *ISIJ Int.* **33**, 925–933 (1993).

<sup>10</sup>A. Mahrle and E. Beyer, "Hybrid laser beam welding-classification, characteristics, and applications," *J. Laser Appl.* **18**, 169–180 (2006).

<sup>11</sup>M. Schneider, L. Berthe, R. Fabbro, and M. Muller, "Measurement of laser absorptivity for operating parameters characteristic of laser drilling regime," *J. Phys. D* **41**, 155502 (2008).

<sup>12</sup>M. Schneider, R. Fabbro, L. Berthe, L. Landai, M. Nivard, and P. Laurens, "Parametric study of drilling with new innovative laser source: application to percussion regime," Proc. ICALEO'04, San Francisco, USA, (2004), pp. 540–546.

<sup>13</sup>M. Schneider, M. Muller, R. Fabbro, and L. Berthe, "Study of hole properties in percussion regime with a new analysis method," Proc. ICALEO'06, Scottsdale, USA (2006).