



HAL
open science

Behavior of platinum/tantalum as interdigital transducers for SAW devices in high-temperature environments

Thierry Aubert, Omar Elmazria, Badreddine Assouar, Laurent Bouvot, Michel Hehn, Sylvain Weber, Mourad Oudich, Damien Genève

► **To cite this version:**

Thierry Aubert, Omar Elmazria, Badreddine Assouar, Laurent Bouvot, Michel Hehn, et al.. Behavior of platinum/tantalum as interdigital transducers for SAW devices in high-temperature environments. IEEE Transactions on Ultrasonics, Ferroelectrics and Frequency Control, 2011, 58 (3), pp.603-610. 10.1109/TUFFc.2011.1843 . hal-00783914

HAL Id: hal-00783914

<https://hal.science/hal-00783914>

Submitted on 20 Feb 2023

HAL is a multi-disciplinary open access archive for the deposit and dissemination of scientific research documents, whether they are published or not. The documents may come from teaching and research institutions in France or abroad, or from public or private research centers.

L'archive ouverte pluridisciplinaire **HAL**, est destinée au dépôt et à la diffusion de documents scientifiques de niveau recherche, publiés ou non, émanant des établissements d'enseignement et de recherche français ou étrangers, des laboratoires publics ou privés.

Behavior of Platinum/Tantalum as Interdigital Transducers for SAW Devices in High Temperature Environments

Thierry AUBERT, Omar ELMAZRIA, Badreddine ASSOUAR, Laurent BOUVOT, Michel HEHN,
Sylvain WEBER, Mourad OUDICH, Damien Genève

Institut Jean Lamour
UMR 7198 CNRS – Nancy University
54506 Vandoeuvre lès Nancy, France
thierry.aubert@lpmi.uhp-nancy.fr

Abstract—In this paper, we report on the use of tantalum as adhesion layer for platinum electrodes used in high-temperature SAW devices based on langasite substrates (LGS). Tantalum exhibits a great adhesive strength, and a very low mobility through the Pt film, ensuring a device lifetime at 900°C of about one hour in air atmosphere and at least 20 hours under vacuum. The latter is limited by morphological modifications of platinum, starting by the apparition of crystallites on the surface, and followed by important terracing and breaking of the film continuity. Secondary neutral mass spectroscopy (SNMS), Auger electron spectroscopy (AES), X-ray diffraction (XRD) measurements, as well as the comparison with iridium-based electrodes allowed us to show that this deterioration is likely intrinsic to platinum film, consisting in agglomeration phenomena. Finally, based on these results, we present a solution that could enhance significantly the lifetime of Pt-based IDTs placed in high-temperature conditions.

Keywords-high temperature; platinum; SAW; langasite; tantalum; iridium

I. INTRODUCTION

It is now well established that SAW devices can be used as pressure, gas or temperature sensors [1,2]. Those devices are particularly interesting for applications in harsh environments where no electronics can survive. Indeed, because they can be remotely powered and interrogated, embedded electronics is not required for wireless applications. Many industrial sectors, such as aeronautics, metallurgy, automotive, are looking forward those small, robust and wireless devices [3,4]. Efforts are now focused on selecting materials able to withstand harsh conditions, such as high temperatures up to 1000°C.

1
2
3 Regarding to the substrate, several studies have shown that langasite ($\text{La}_3\text{Ga}_5\text{SiO}_{14}$) is well suited for
4 this kind of applications [5]. It is only limited by its relative important propagation losses, especially at
5 high frequencies, making it unsuitable for applications above 1 GHz under high-temperature conditions
6 [6], which restrains its use for wireless applications to the 434 MHz ISM band or, in the best case to the
7 869 MHz one, excluding the more promising band at 2.45 GHz. Now, the main challenge is to find a
8 reliable combination of materials to realize an IDT structure with high stability and good performances.
9

10
11
12 Up to now, most of the studies have been conducted on platinum electrodes [3,4]. Indeed, this noble
13 metal has a relatively high melting temperature (1773°C), and the largest chemical inertness among the
14 noble metal family, essential at high temperature. However, this property has a drawback: the consequence
15 of the platinum weak chemical affinity for others elements is a very poor adhesion to oxide substrates such
16 as quartz or langasite. The solution consists in using a very thin (10 to 20 nm) intermediate layer between
17 the substrate and the platinum film, so-called “adhesion layer”. It must be constituted by a refractive metal,
18 more reactive than platinum, such as titanium, zirconium, tantalum, etc. Bonding between the adhesion
19 layer and the platinum film is ensured by alloying [7].
20
21
22
23
24
25
26
27
28
29
30
31
32
33

34
35 Several studies have shown the limitations of titanium as adhesion layer at temperatures above 600°C
36 [8]. The diffusion of titanium in the platinum film is actually large, leading to the formation of oxide
37 precipitates (TiO_2) in the Pt grain boundaries. The consequences are the modification of the electrical
38 properties of the IDTs and the progressive vanishing of the adhesion layer leading to delamination.
39
40
41
42
43

44 Pt/Zr combination has shown far better performances until 700°C . In particular, AES (Auger electron
45 spectroscopy) measurements have highlighted that Zr has not diffused at all through Pt after 8h of
46 annealing at 700°C [9]. Nonetheless, it has been shown that this combination is inadequate for continuous
47 operation beyond about 700°C , because of an important degradation attributed to de-wetting phenomena
48 [5].
49
50
51
52
53

54
55 More recently, Da Cunha *et al.* have studied alternative solutions, replacing platinum by a Pt/10%Rh
56 alloy, while maintaining the adhesion layer of zirconium [5]. This combination exhibited a very good
57
58
59
60

1
2
3 stability until 950°C, which is a considerable progress. This stability was even slightly improved by co-
4
5 depositing the alloy with ZrO₂, and by using a SiAlON protective over-layer [10].
6
7

8 In this work, our purpose is to investigate tantalum as adhesion layer for platinum electrodes. This
9
10 combination has only been studied yet in other fields than SAW applications [11]. Maeder *et al.*, in
11
12 particular, have noted that its performance is very close to that of zirconium after an annealing of 10
13
14 minutes in a low pressure O₂ atmosphere at 620°C [12]. The second aim of this study is to understand the
15
16 mechanisms leading to the potential deterioration of Pt electrodes, in order to consider appropriate
17
18 solutions.
19
20

21 II. EXPERIMENTAL

22
23

24 Platinum and tantalum thin films were deposited on Y-X (Euler angle: 0°, 90°, 0°) langasite substrates
25
26 (Witcore Co. Ltd.) by sputtering method in argon gas (pressure: 10⁻² mbar), under a DC power discharge of
27
28 60 W for Ta and 15 W for Pt. The thickness of the adhesion layer was 10 nm, while that of platinum film
29
30 was 100 nm. SAW delay lines operating at 97 or 167 MHz were then processed using photolithography
31
32 and ion beam etching (IBE). All devices were then electrically characterized with a probe station before
33
34 and after annealing. These were performed in a tube furnace under air atmosphere or vacuum (5.10⁻⁵ mbar
35
36 of pressure), at 900°C for a duration varying between 30 minutes and 20 hours. The samples were quickly
37
38 inserted in the pre-heated furnace, and pulled out of the hot zone as fast as possible. Langasite substrates
39
40 have shown great resistance to this thermal shock treatment. Some samples with Ir/Ti electrodes (which
41
42 means 10 nm of titanium as adhesion layer and 100 nm of iridium as electrode) were also fabricated to
43
44 compare their behavior to that of Pt/Ta IDTs.
45
46
47

48 The structure and the morphology of the thin metal films were studied by X-ray diffraction (XRD) and
49
50 scanning electron microscopy (SEM). Compositional depth profiles were obtained by secondary neutral
51
52 mass spectroscopy (SNMS) and AES. These analyses were conducted in the bus bar region, to avoid
53
54 averaging effects. The dimensions of the holes were 200 x 200 µm in the SNMS case and 12 x 12 µm for
55
56
57
58
59
60

AES. The latter has in addition given us the chemical mapping of the surface of our devices. The size of the probe was close to 50 nm.

III. RESULTS AND DISCUSSION

A. Air annealing

First of all, the adhesion of the Pt/Ta films to the substrate was very good at room temperature as well as after high-temperature treatment. The frequency response shows no deterioration after an annealing at 900°C for 30 minutes. We can even note a slight decrease in the insertion losses (Fig. 1). SEM images have confirmed this result, revealing very limited modifications, which consist in the apparition of crystallites at the surface of the platinum film (Fig. 2).

To study the limitations of this kind of device at high temperature, we made it undergo an annealing process at 900°C for 2 hours. The result was no appeal: the SAW signal vanished while SEM images revealed that the crystallites have almost disappeared, leaving a substantial terracing and some broken IDTs fingers, which explains the loss of the SAW signal (Fig. 3). In order to understand the origin of this problematic limitation, some Pt/Ta/LGS samples were investigated after heating treatment, by SNMS (Fig. 4), AES (Fig. 5 and Fig. 6) and XRD (Fig. 7).

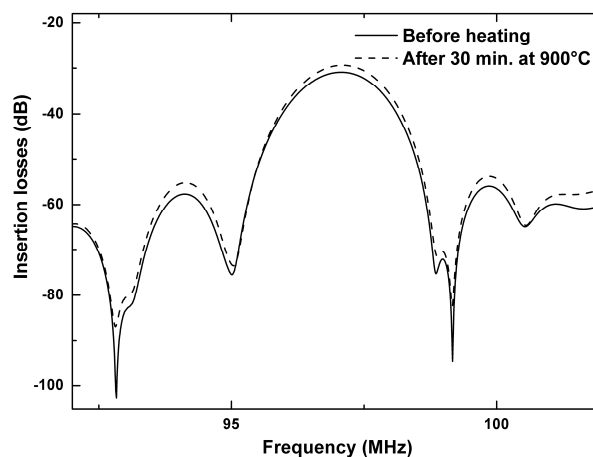


Fig. 1. Frequency response ($|S_{21}|$) of a Pt/Ta/LGS SAW device before and after annealing for 30 min. at 900°C

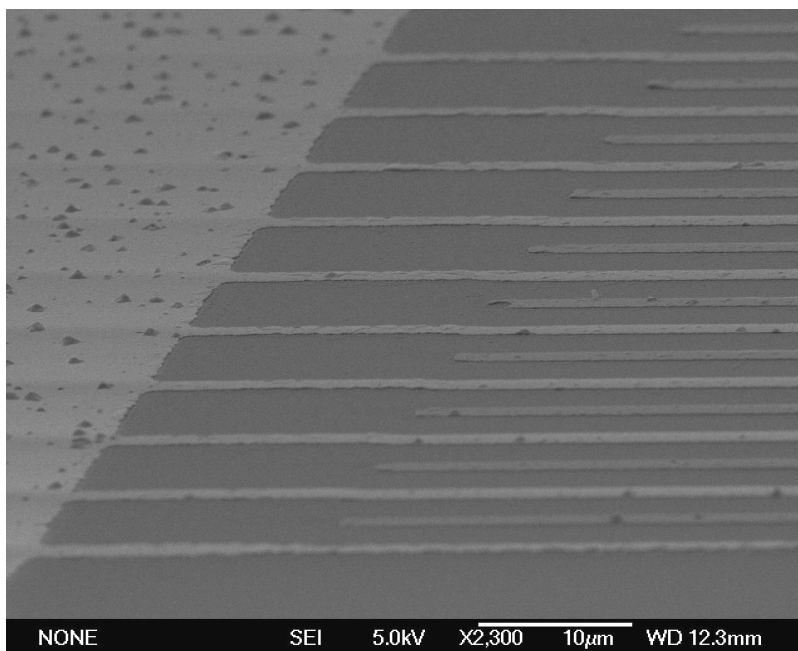


Fig. 2. Grazing SEM image of a Pt/Ta IDT after 30 min. at 900 °C

SNMS depth profile curves point out that there is no significant diffusion of tantalum through the Pt film during heating, while it moves quite well into the LGS substrate at such high temperatures (Fig. 4). It would be interesting to re-evaluate this phenomenon with a langatate ($\text{La}_3\text{Ga}_{5.5}\text{Ta}_{0.5}\text{O}_{14}$) substrate, which could act as a barrier towards tantalum, as it already contains a certain amount of this element. SNMS measurements also reveal that the amount of oxygen in the Ta layer increase significantly during heating, which likely means that **it has been oxidized**. AES measurements confirm these results (Fig. 5). Last, it seems that there is no oxygen in the platinum film, as well as at its surface as one can see on the AES cartography of the IDTs given for platinum and oxygen (Fig. 6): none of our analyses evidence the formation of platinum suboxides as described by Stancovski *et al.* [13]. Thus, we can assume that neither tantalum nor oxygen play an essential role in the deterioration of the Pt layer, implying that this phenomenon is likely intrinsic to platinum: whatever be the nature of the adhesion layer and the ambient gas mixture, it will take place.

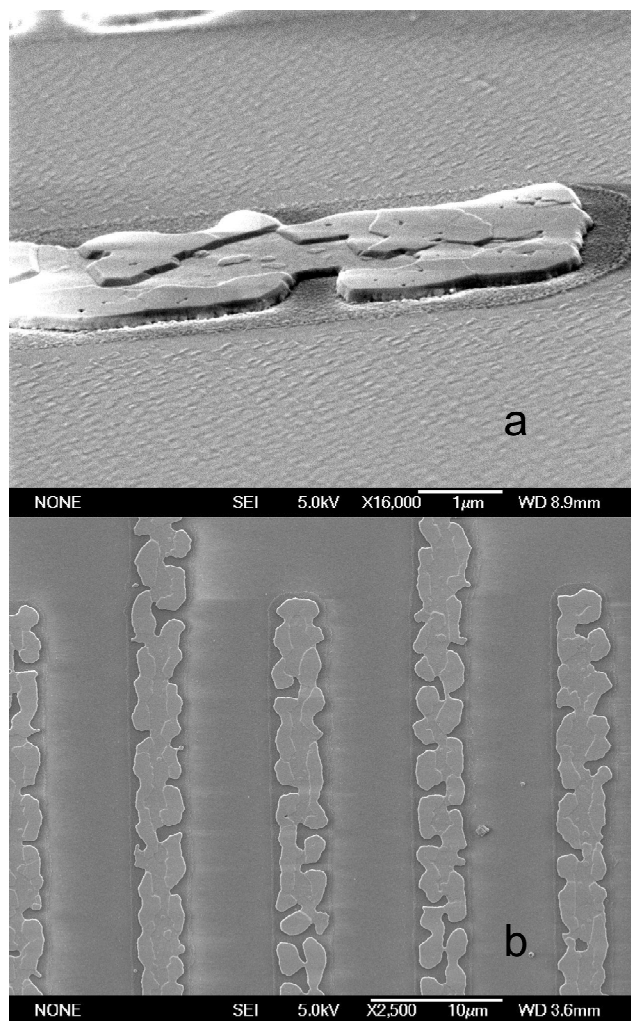


Fig. 3. SEM images of a Pt/Ta IDT after an annealing of 2 hours at 900°C: grazing view of a finger tip (a) and plane view of several finger electrodes (b)

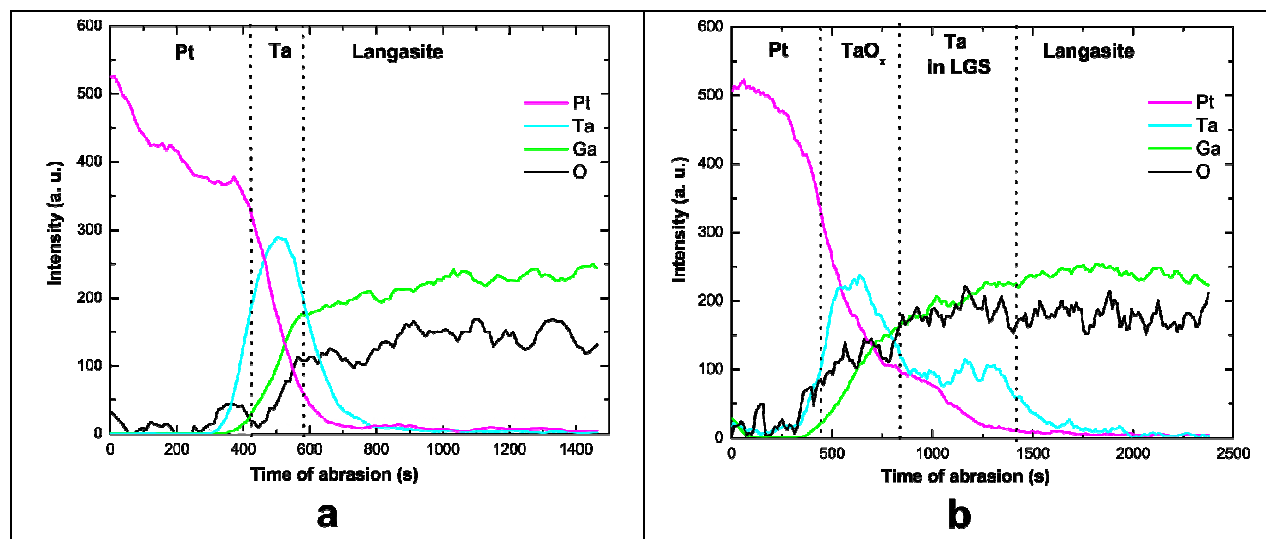


Fig. 4. SNMS depth profile of a Pt/Ta/LGS sample before annealing (a) and after 30 min. at 1000°C (b)

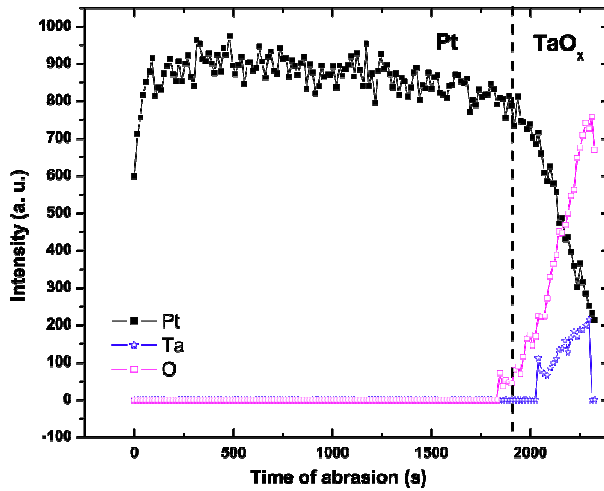


Fig. 5. AES depth profile of a Pt/Ta/LGS sample after 2h at 900°C (up to 1800s, the amount of oxygen is below the detection threshold which is about 3% for the atomic concentration).

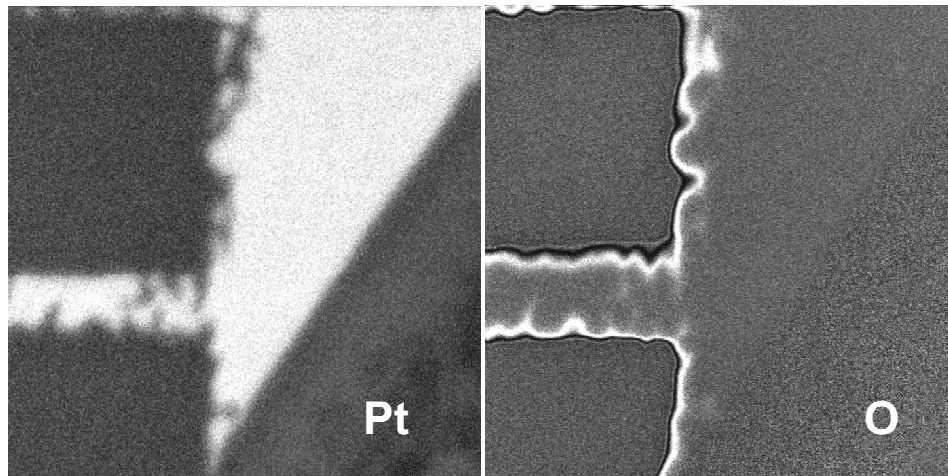


Fig. 6. AES surface mapping of a Pt/Ta IDT after 2 hours at 900°C. Bright zones indicate the presence of the element. The right-bottom corner is covered with silver paint

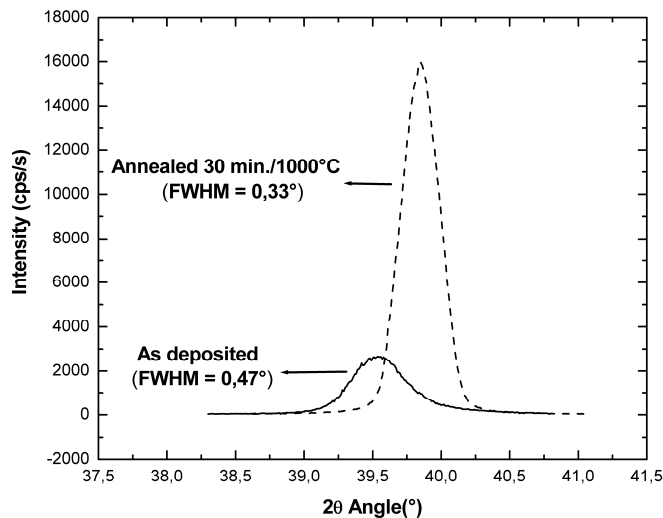


Fig. 7. Pt (111) XRD peak before and after 30 min. at 900°C

1
2
3
4
5
6
7
8
9
10
11
12
13
14
15
16
17
18
19
20
21
22
23
24
25
26
27
28
29
30
31
32
33
34
35
36
37
38
39
40
41
42
43
44
45
46
47
48
49
50
51
52
53
54
55
56
57
58
59
60

1
2
3 XRD measurements strengthen this hypothesis, by showing the modification of the microstructure of
4 the Pt thin film under heating. θ - 2θ scan points out a strong (111) orientation of the platinum films, which
5 is a conventional result for FCC metals, like Pt [14]. The important fact is that the full width at half
6 maximum (FWHM) of this (111) Pt peak decreases significantly while its intensity increases after
7 annealing (Fig. 7). It is well known that the width of diffraction peaks decreases while increasing the size
8 of grains, so we can conclude that the Pt layer strongly recrystallized during annealing, and that the
9 apparition of the big crystallites is a spectacular but instable manifestation of this phenomenon. The slight
10 decrease in the insertion losses observed after annealing (Fig. 1) could be related to this grain growth
11 resulting in fewer grain boundaries and thus better conductivity of the Pt film. Another interesting
12 information is given by the shift of this (111) Pt peak if one compares its position before and after
13 annealing. The peak of as-deposited films is at a slightly lower angle of diffraction ($39,538^\circ$) than its
14 theoretical value ($39,763^\circ$), which means that the interplanar value d_{111} of these films is larger than the bulk
15 one. This indicates that the Pt layer is slightly in compression in the plane of the film. A likely reason for
16 this compressive stress is peening, by which the subsurface of a sputtered film is compressed due to
17 bombardment by reflected neutral atoms [14]. This compressive stress is then removed during the
18 recrystallization process which leaves a completely relaxed film at the temperature of annealing. To the
19 opposite, the peak after annealing has shifted to a much higher value ($39,850^\circ$). This can be explained by
20 the difference of the thermal expansion coefficient α between Pt ($8,8 \cdot 10^{-6} \text{ K}^{-1}$) and LGS ($5,6 \cdot 10^{-6} \text{ K}^{-1}$),
21 which induces, after cooling down at a high rate a strain of the film and an associated “thermal” stress.
22 Here, as α_{LGS} is lower than α_{Pt} , we can deduce that the Pt film is stretched in the plane, implying a lower
23 d_{111} value than for the bulk, and thus a higher diffraction angle than the theoretical value.
24
25
26
27
28
29
30
31
32
33
34
35
36
37
38
39
40
41
42
43
44
45
46
47
48

49 Nonetheless, the recrystallization phenomena, alone, cannot explain the important deterioration of the
50 Pt film leading to the break of the IDT fingers. Indeed, in Fig. 8, platinum grain size, derived from FWHM
51 of (111) Pt peak via the Scherrer formula [14], is plotted versus the annealing duration. This figure shows
52
53
54
55
56
57
58
59
60

1
2
3 that the recrystallization is a “fast” phenomenon, which is finished in less than 15 minutes, whereas the
4
5 break of the electrodes requires much more than 30 minutes as Fig. 2 attests.
6
7

8 It is important to note that as our Pt films are polycrystalline, the total surface of grains is very large,
9
10 and surface diffusion mechanisms probably governs recrystallization phenomena. This hypothesis agrees
11
12 with the rule of thumb stating that the onset of surface diffusion is about the Hüttig temperature (T_H). T_H is
13
14 defined relatively to the material melting temperature (T_m) by $T_H = 0.3 T_m$ (temperatures are expressed in
15
16 Kelvin). For platinum, T_H is about 410°C, well below the temperature considered in this study, i.e. 900°C.
17
18 Actually, at such high temperatures, bulk mobility is also activated as these mechanisms are known to
19
20 become significant over the Tammann temperature (defined as $0.5T_m$), which value for Pt is about 750°C
21
22 [14]. Thus, whereas these experiments are conducted at temperatures well below the melting temperature
23
24 of platinum, thermal energy is sufficient to generate driving forces which will work towards reducing the
25
26 source of instability of any thin film: its enormous surface to volume ratio [11,15]. Surface area can be
27
28 reduced through mass transfer by the diffusion of the platinum nanocrystallites. If this phenomenon goes to
29
30 its end, the nanocrystallites agglomerate to form a collection of separate beads, which is the configuration
31
32 with the smallest surface to volume ratio (Fig. 9). The break of the electrodes that we have observed after 2
33
34 hours of annealing at 900°C is likely a consequence of the first movements of agglomeration (Fig. 3).
35
36
37
38

39 *B. Vacuum annealing*

40
41 In order to assess our hypothesis stating that the deterioration of the platinum electrodes is a
42
43 consequence of agglomeration phenomena, we have conducted a new series of annealing at 900°C under
44
45 vacuum on two kinds of devices: the same as above with Pt/Ta electrodes, and others with Ir/Ti electrodes.
46
47 Iridium was chosen as it is a noble metal like platinum with a higher melting temperature of 2440°C,
48
49 compared to 1769°C for platinum. Thus, for iridium, the Hüttig temperature is about 630°C, while the
50
51 Tammann temperature is about 1080°C. This implies that iridium should undergo some recrystallization at
52
53 900°C, but no agglomeration (or at a very slow rate compared to platinum). These experiments have to be
54
55
56
57
58
59
60

1
2
3 conducted in vacuum as above 700°C, iridium slightly oxidizes in surface, and this oxide is highly volatile
4
5 [16].
6
7

8 As expected, XRD measurements show that our iridium films are (111) oriented too, and confirm their
9
10 recrystallization from 700°C (Fig. 10).
11

12
13 Fig. 11 shows a morphological comparison between Pt/Ta and Ir/Ti electrodes after an annealing of 20
14
15 hours at 900°C in vacuum, at a pressure of $5 \cdot 10^{-5}$ mbar. While early manifestation of agglomeration can be
16
17 seen in the platinum case, there is no trace of it on iridium, which is coherent with our hypothesis. This
18
19 result also points out the high potential of iridium for such applications and qualifies it as a very promising
20
21 candidate for the future.
22

23
24 Another important observation is related to the kinetic of the deterioration in vacuum, which is well
25
26 lower than in air atmosphere. Whereas this deterioration is well advanced in air after 2h at 900°C, inducing
27
28 the loss of the SAW signal, an annealing in vacuum at the same temperature for 20h has a very limited
29
30 impact on the frequency response (Fig. 12). This fundamental difference is very difficult to explain on the
31
32 basis of our results. According to our interpretation of the deterioration, it should be related to a difference
33
34 in the mobility of the moving species. From there, two hypotheses can be proposed to explain this
35
36 phenomenon. First, it could be related to a better mobility of the Pt nanocrystallites on **tantalum oxide** than
37
38 on Ta [14]. This would mean that the nature of the adhesion layer, as well as that of the surrounding
39
40 atmosphere, impact the kinetic of the agglomeration phenomena. The second explanation could come from
41
42 the formation of metastable platinum oxides which would be more mobile than platinum.
43
44

45
46 Anyway, this result confirms that a simple solution to significantly extend the lifetime of Pt-based
47
48 electrodes could come from the use of an over-layer. This would play a dual role: in addition to ensuring
49
50 its natural protective role (particularly with respect to oxygen), it could allow to mechanically fix the Pt
51
52 nanocrystallites, thereby preventing their agglomeration. Indeed, as it can be clearly seen on Fig. 3, the
53
54 agglomeration phenomena initially take place at the tip of the platinum film, where the nanocrystallites
55
56 undergo fewer forces from their neighbors, and thus where they are less mechanically fixed.
57
58
59
60

1
2
3
4
5
6
7
8
9
10
11
12
13
14
15
16
17
18
19
20
21
22
23
24
25
26
27
28
29
30
31
32
33
34
35
36
37
38
39
40
41
42
43
44
45
46
47
48
49
50
51
52
53
54
55
56
57
58
59
60

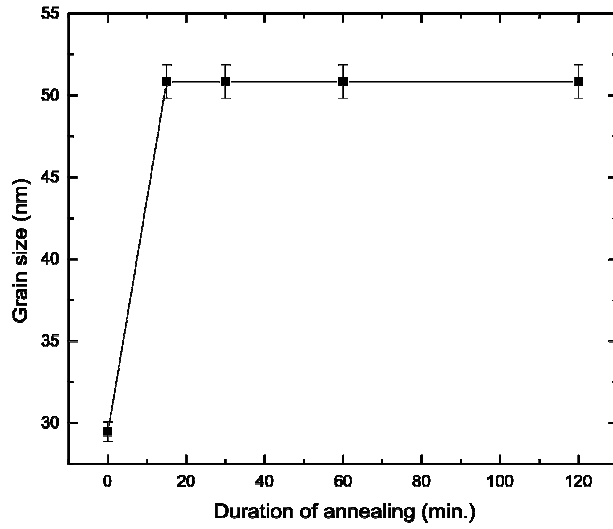


Fig. 8. Platinum grain size versus duration of annealing at 900°C

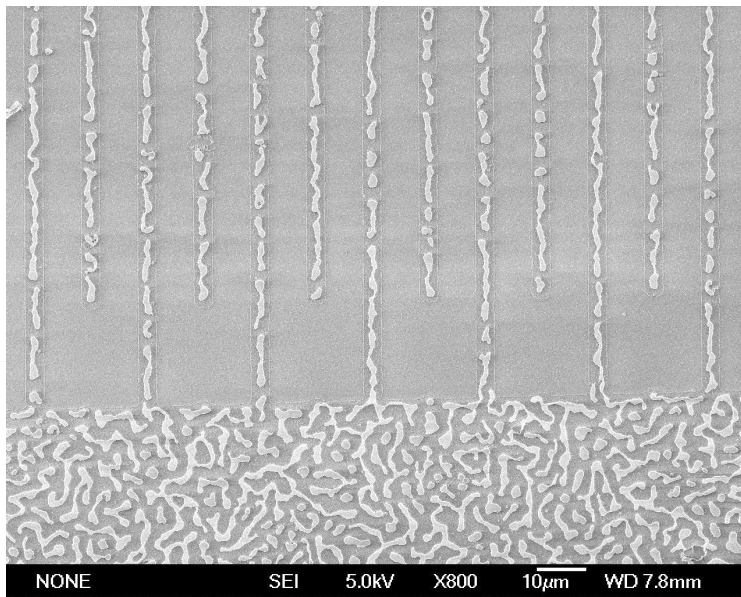


Fig. 9. SEM image of a Pt/Ta IDT after 6h at 1000°C

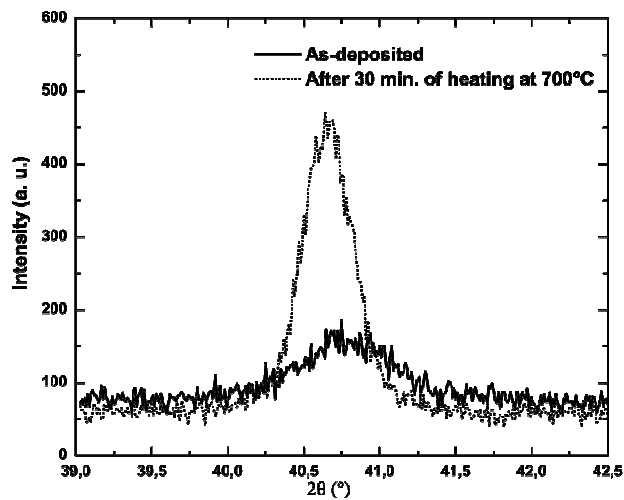


Fig. 10. Ir (111) XRD peak before and after 30 min. at 700°C

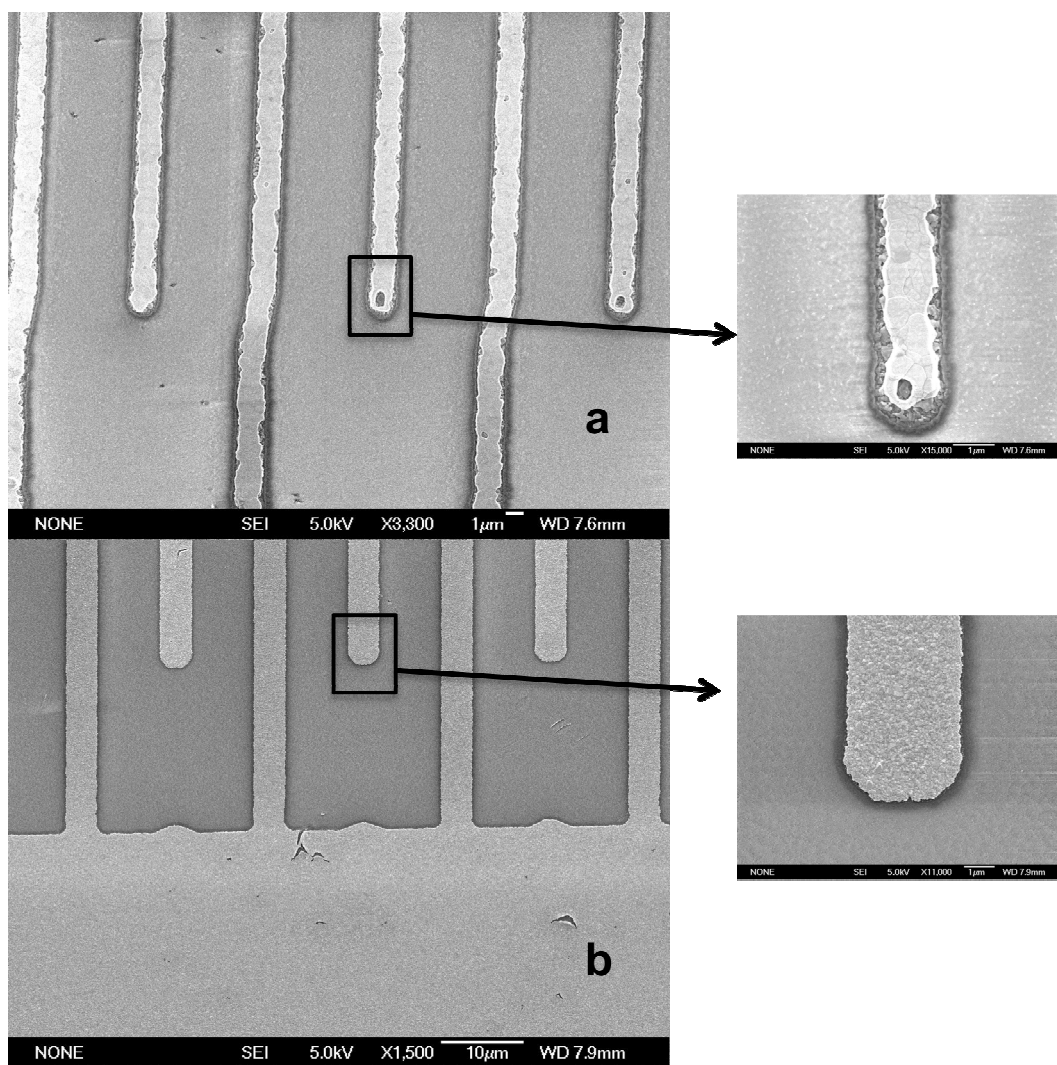


Fig. 11. SEM images of Pt/Ta (a) and Ir/Ti IDT (b) after 20h at 900°C

1
2
3
4
5
6
7
8
9
10
11
12
13
14
15
16
17
18
19
20
21
22
23
24
25
26
27
28
29
30
31
32
33
34
35
36
37
38
39
40
41
42
43
44
45
46
47
48
49
50
51
52
53
54
55
56
57
58
59
60

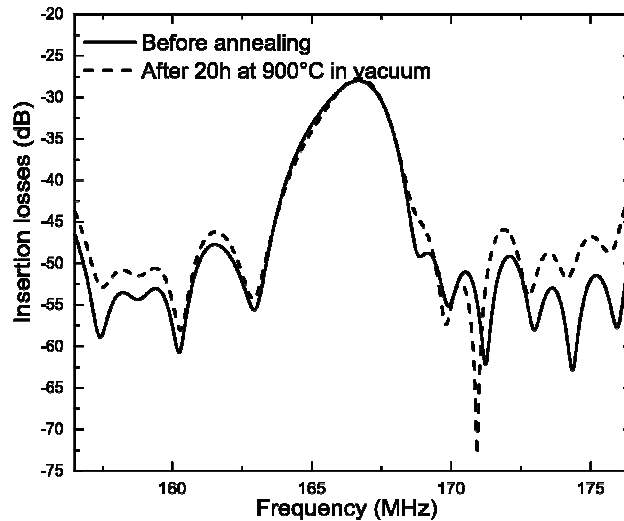


Fig. 12. Frequency response ($|S_{21}|$) of a Pt/Ta/LGS SAW device before and after annealing for 20h at 900°C in vacuum

Eventually, it has to be noted that these results are quite different from that obtained by Bardong *et al.*, who have observed an important degradation of the SAW signal after a relatively short annealing of 2h at 650°C in vacuum [17]. They have attributed this deterioration to a modification of the langasite substrate they used, this presenting a lack of gallium and oxygen after heating. This divergence between their results and ours are quite difficult to explain, but could be related to a difference of surface chemical properties, depending on the cut of the LGS substrate. Indeed, while Bardong *et al.* have used the (0°; 138,5°) cut, our study was realized with the Y cut.

IV. CONCLUSION

To summarize, we have shown that, although it oxidizes in air atmosphere at high temperature, tantalum has the required properties to be used as an adhesion layer for platinum-based IDTs. The deterioration of Pt/Ta electrode can be attributed to agglomeration phenomena in the platinum thin film, leading to the break of the IDTs fingers and the loss of the SAW signal in a matter of hours at 900°C in air atmosphere. This interpretation means that, whatever be the nature of the adhesion layer, the deterioration of the platinum film at high temperature cannot be avoided, as it is intrinsic to it. This is consistent with the fact that similar observations have been done in the case of a zirconium adhesion layer [5]. However, it could be possible to significantly increase the lifetime of such electrodes by using a

1
2
3 protective over-layer which could slow down the agglomeration mechanisms [10]. Another original way
4
5 to avoid such thin film-specific problem is to replace platinum by iridium, which exhibits a far higher
6
7 melting temperature. Our experiments confirmed this prediction, as Ir/Ti electrodes performed much
8
9 better than Pt/Ta ones. Nonetheless, even in this case, the use of a protective over-layer could be
10
11 mandatory as iridium oxidizes above 700°C [16].
12
13

14 REFERENCES

- 15
16
17 [1] V. Kalinin, R. Lohr, A. Leigh and G. Bown, "Application of passive SAW resonant sensors to
18
19 contactless measurement of the output engine torque in passenger cars," Proc. IEEE Int. Freq. Contr.
20
21 Symp., pp. 499-504, 2007.
22
23
24 [2] B. Dixon, V. Kalinin, J. Beckley and R. Lohr, "A second generation in-car tire pressure monitoring
25
26 system based on wireless passive SAW sensors," Proc. IEEE Int. Freq. Contr. Symp., pp. 374-380,
27
28 2006.
29
30
31 [3] J. A. Thiele and M. P. da Cunha, "Platinum and palladium high-temperature transducers on
32
33 langasite," IEEE Trans. Ultrason. Ferroelec. Freq. Contr., Vol. 52, No. 04, pp. 545-549, April 2005.
34
35
36 [4] T. Aubert, F. Sarry, O. Elmazria, L. Bouvot, B. Assouar, P. Nicolay and M. Hehn, "Extraction of
37
38 COM parameters on Pt/LGS for high temperature SAW sensor," Proc. IEEE Ultrasonics Symp., pp.
39
40 820-823, 2008.
41
42 [5] M. P. da Cunha, T. Moonlight, R. J. Lad, G. Bernhardt and D. J. Frankel, "Enabling very high
43
44 **temperature** acoustic wave devices for sensor and frequency control applications," Proc. IEEE
45
46 Ultrasonics Symp., pp. 2107-2110, 2007.
47
48
49 [6] R. Fachberger, G. Bruckner, R. Hauser, C. Ruppel, J. Biniash and L. Reindl, "Properties of radio
50
51 frequency Rayleigh waves on langasite at elevated temperature," Proc. IEEE Ultrasonics Symp., pp.
52
53 1223-1226, 2004 .
54
55
56 [7] D. S. Ballantine, R. M. White, S. J. Martin, A. J. Ricco, E. T. Zellers, G.C. Frye and H. Wohltjen,
57
58 *Acoustic Wave Sensors*, Academic Press, 1997.
59
60

- 1
2
3 [8] M. N. Hamidon, V. Skarda, N. M. White, F. Krispel, P. Krempf, M. Binhack and W. Buff,
4 "Fabrication of high temperature surface acoustic wave devices for sensor applications," Sens. and
5 Actuators A, Vol. 123-124, pp. 403-407, 2005.
6
7
8
9
10 [9] G. Bernhardt, C. Silvestre, N. LeCursi, S.C. Moulzolf, D. J. Frankel and R. J. Lad, "Performance of
11 Zr and Ti adhesion layers for bonding of platinum metallization to sapphire substrates," Sens. and
12 Actuators B: Chem., Vol. 77, pp. 368-374, 2001.
13
14
15
16
17 [10] M. P. da Cunha, R. J. Lad, T. Moonlight, G. Bernhardt and D. J. Frankel, "High temperature stability
18 of langasite surface acoustic wave devices," Proc. IEEE Ultrasonics Sympo., pp. 205-208, 2008.
19
20
21 [11] S. L. Firebaugh, K. F. Jensen and M. A. Schmidt, "Investigation of high temperature degradation of
22 platinum thin films with an *in situ* resistance measurement apparatus," J. Microelectromech. Systems,
23 Vol. 7, NO. 1, pp. 128-135, 1998.
24
25
26
27
28 [12] T. Maeder, L. Sagalowicz and P. Muralt, "Stabilized platinum electrodes for ferroelectric film
29 deposition using Ti, Ta and Zr adhesion layers," Jpn. J. Appl. Phys., Vol. 37, pp. 2007-2012, 1998.
30
31
32
33 [13] V. Stankovski, S. Sridhar and U. B. Pal, "Thermodynamic stability and interfacial impedance of
34 solid-electrolyte cells with noble-metal electrodes," J. Electroceramics, 3:3, pp. 279-299, 1999.
35
36
37 [14] R. M. Tiggelaar, R. G. P. Sanders, A. W. Groenland and J. G. E. Gardeniers, "Stability of thin
38 platinum films implemented in high-temperature microdevices," Sens. Actuators A: Phys., doi :
39 10.1016/j.sna.2009.03.017., 2009.
40
41
42
43
44 [15] E. Jiran and C. V. Thompson, "Capillary instabilities in thin films," Jour. Elect. Mat., Vol. 19, No. 11,
45 pp. 1153-1157, 1990.
46
47
48 [16] M. Lisker, T. Hur'yeva, Y. Ritterhaus and E. P. Burte, "Effect of annealing in oxygen atmosphere on
49 morphological and electrical properties of iridium and ruthenium thin films prepared by liquid
50 delivery MOCVD," Surf. and Coat. Tech., Vol. 201, pp. 9294-9298, 2007.
51
52
53
54
55 [17] J. Bardong, G. Bruckner, M. Kraft and R. Fachberger, "Influence of packaging atmospheres on the
56 durability of high-temperature SAW sensors," Proc. IEEE Ultrasonics Symp., pp. 1680-1683, 2009.
57
58
59
60