



HAL
open science

Modelling of strongly coupled particle growth and aggregation

Frédéric Gruy, Eric Touboul

► **To cite this version:**

Frédéric Gruy, Eric Touboul. Modelling of strongly coupled particle growth and aggregation. International Conference on Mathematical Modeling in Physical Sciences, IC-MSQUARE - 2012, Sep 2012, Budapest, Hungary. 410 (1), 2013. hal-00773546

HAL Id: hal-00773546

<https://hal.science/hal-00773546>

Submitted on 8 Nov 2021

HAL is a multi-disciplinary open access archive for the deposit and dissemination of scientific research documents, whether they are published or not. The documents may come from teaching and research institutions in France or abroad, or from public or private research centers.

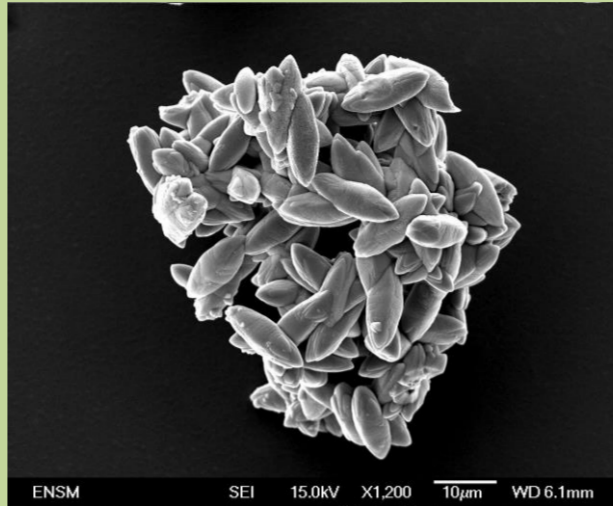
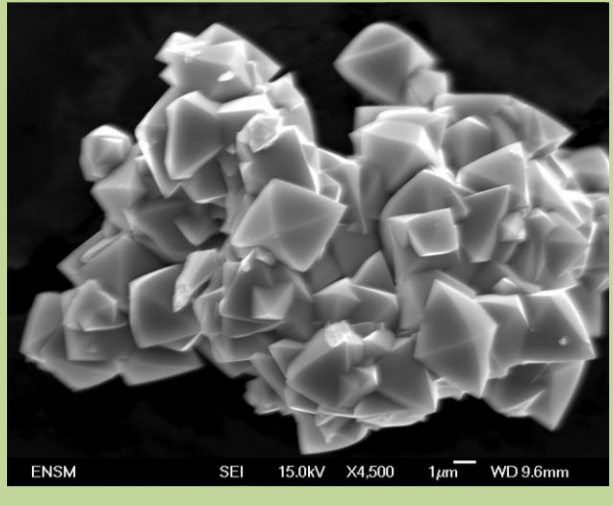
L'archive ouverte pluridisciplinaire **HAL**, est destinée au dépôt et à la diffusion de documents scientifiques de niveau recherche, publiés ou non, émanant des établissements d'enseignement et de recherche français ou étrangers, des laboratoires publics ou privés.

Modeling of strongly coupled particle growth and aggregation

Introduction

Topic: Synthesis of fine particles by precipitation including nucleation, growth and aggregation

Objective: Modelize the dynamics of a suspension when the aggregation modifies the growth of the particles



Authors

gruy@emse.fr

Frédéric Gruy, Dept of Chemical Engineering
Eric Touboul, Department of Mathematics

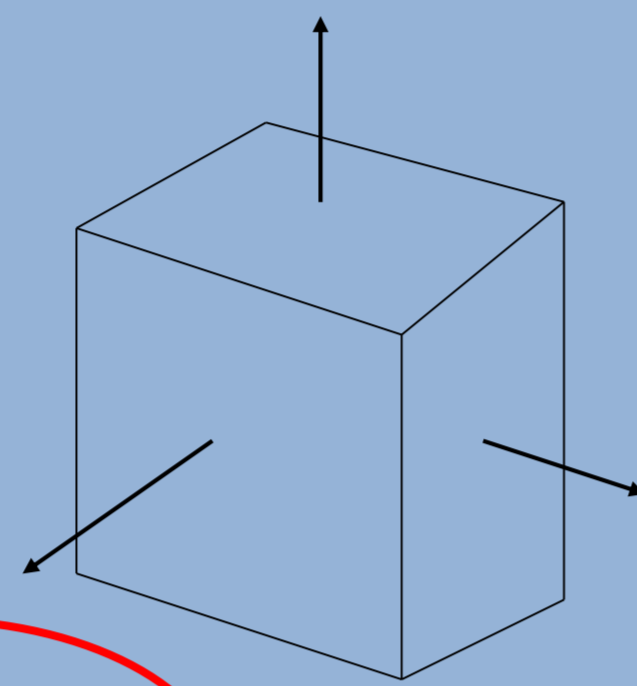
Ecole Nationale Supérieure des Mines
158 cours Fauriel, Saint-Etienne, France

Classical modeling: Weakly Coupled Growth & Aggregation

Growth

1st system: crystal + supersaturated solution

Growth law: $\frac{dm}{Adt} = \varphi = k S^j \longrightarrow \frac{dv}{dt} = G(v)$



The growth law only depends on the instantaneous state of the system

2nd system: population of crystals + supersaturated solution

Population balance equation (PBE) for population density $n(t,v)$

PBE 1D: one internal variable v

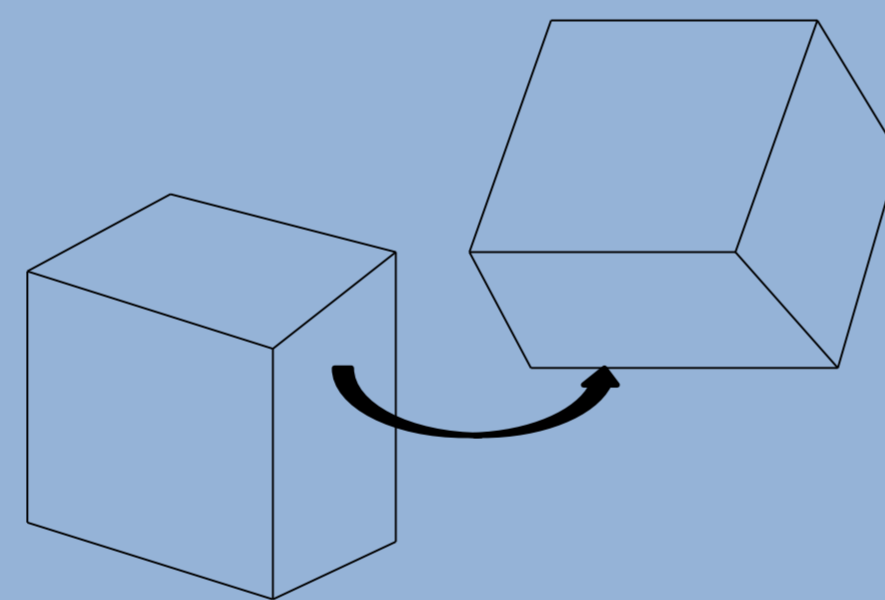
$$\frac{\partial n}{\partial t} = - \frac{\partial G(v)n}{\partial v}$$

Binary collision – aggregation

Smoluchowski equation

PBE 1D: one internal variable v

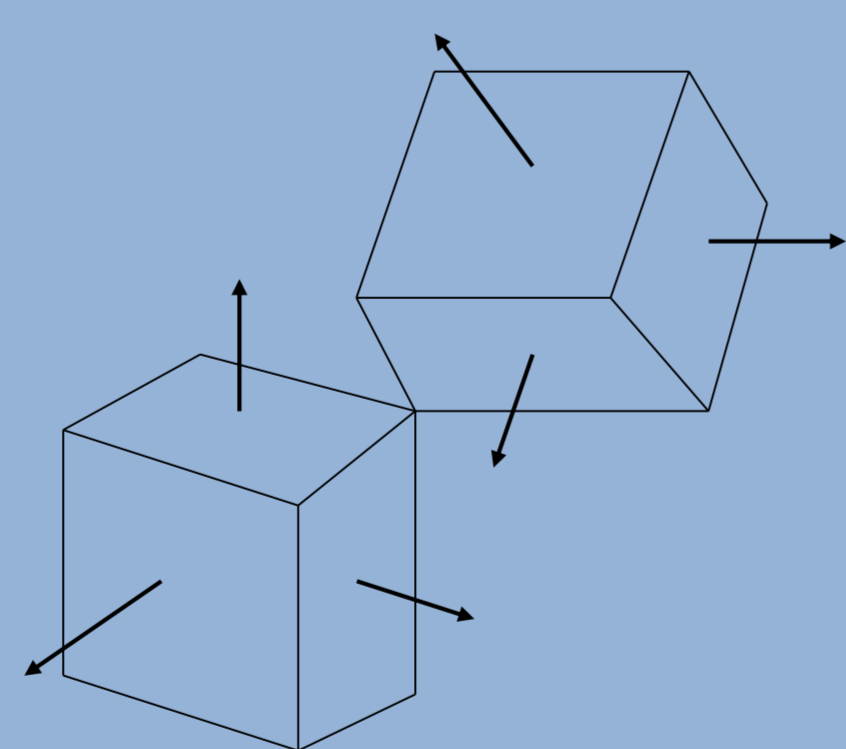
$$\frac{\partial n}{\partial t} = \frac{1}{2} \int_0^v K(\bar{v}, v-\bar{v}) n(\bar{v}) n(v-\bar{v}) d\bar{v} - n(v) \int_0^\infty K(v, \bar{v}) n(\bar{v}) d\bar{v}$$



Weakly coupled growth & aggregation

Growth & aggregation separately contribute to the PBE

$$\frac{\partial n}{\partial t} + \frac{\partial(G(v)n)}{\partial v} = \frac{1}{2} \int_0^v K(\bar{v}, v-\bar{v}) n(\bar{v}) n(v-\bar{v}) d\bar{v} - n(v) \int_0^\infty K(v, \bar{v}) n(\bar{v}) d\bar{v}$$

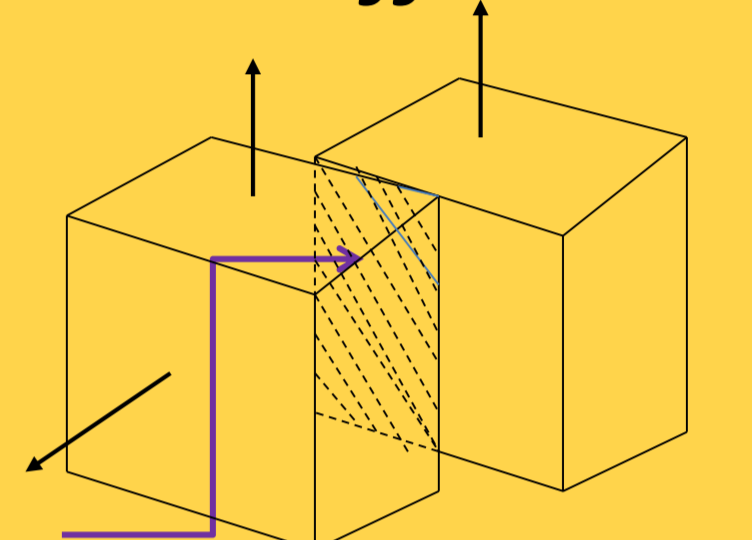


S : supersaturation φ : mass flux A : area G : growth rate K : kernel

Non classical modeling: Strongly Coupled Growth & Aggregation

Growth

- Growth is perturbed by the collision event
- Cause of the crystal growth is yet the same (supersaturation), but the mass increase becomes different



Growth law: $\varphi = k S^j \quad \frac{dm}{dt} = (A - \alpha A_0) \varphi \quad A \propto v^{2/3}$

$\longrightarrow \frac{dv}{dt} = G(v, v_0)$ Effective growth rate

Strongly coupled growth & aggregation

The presence of v_0 in $G(v, v_0)$ leads to a new version of the PBE

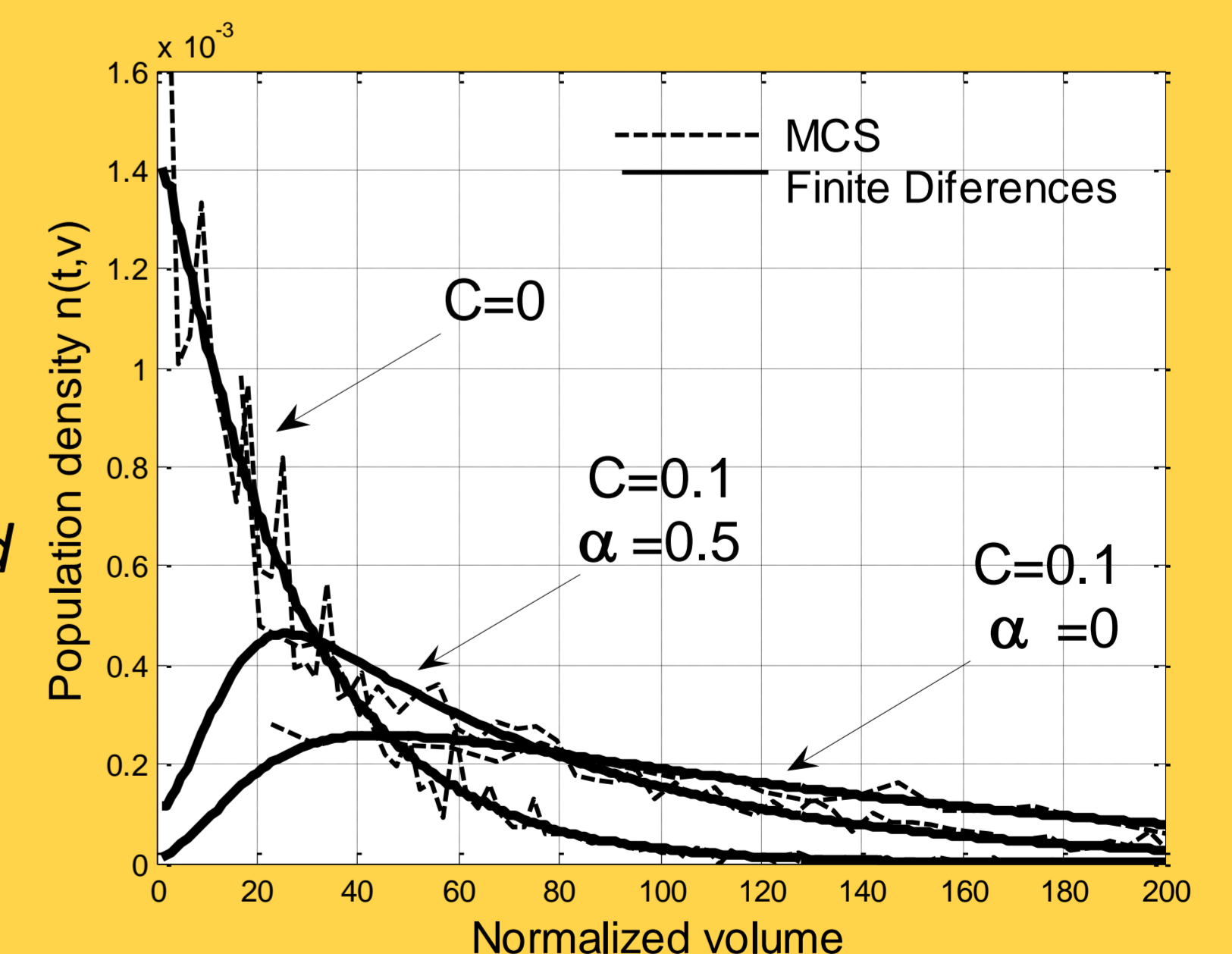
- PBE 2D: two internal variables: $(v, v_0) \rightarrow (t, v, v_0)$
- New densities: $n(t, v) = \int_0^v N(t, v, v_0) dv_0 \quad N(t, v < v_0, v_0) = 0$
- New PBE:

$$\frac{\partial N(t, v, v_0)}{\partial t} + \frac{\partial G(v, v_0) N}{\partial v} = \delta(v - v_0) J_{v_0} - N(t, v, v_0) \int_0^\infty K(v, \bar{v}) n(t, \bar{v}) d\bar{v} \quad v \geq v_0$$

$$J_{v_0} = \frac{1}{2} \int_0^{v_0} K(\bar{v}, v_0 - \bar{v}) n(t, \bar{v}) n(t, v_0 - \bar{v}) d\bar{v}$$

- Solving:

- by Monte Carlo Simulation
- by Finite difference method



$$G(v, v_0) = B(A - \alpha A_0) = C(v^{2/3} - \alpha v_0^{2/3})$$

$$K = 0.5$$

Outlook & Application

- Application to realistic (perikinetic, orthokinetic) aggregation kernels:
aggregation of crystal suspension in a turbulent medium
- Application to various growth kinetics (involving adsorbed molecules ...):
crystal growth in presence of surfactant or impurity
- Application to PBE with other internal parameters (porosity ...):
aggregation with restructuring