



HAL
open science

Volcanic SO₂ fluxes derived from satellite data: a survey using OMI, GOME-2, IASI and MODIS

Nicolas Theys, Robin Campion, Lieven Clarisse, Hugues Brenot, J. van Gent, Bart Dils, S. Corradini, L. Merucci, Pierre-François Coheur, Michel van Roozendael, et al.

► To cite this version:

Nicolas Theys, Robin Campion, Lieven Clarisse, Hugues Brenot, J. van Gent, et al.. Volcanic SO₂ fluxes derived from satellite data: a survey using OMI, GOME-2, IASI and MODIS. *Atmospheric Chemistry and Physics*, 2013, 13 (12), pp.5945-5968. 10.5194/acp-13-5945-2013 . hal-00768974

HAL Id: hal-00768974

<https://hal.science/hal-00768974v1>

Submitted on 20 Oct 2015

HAL is a multi-disciplinary open access archive for the deposit and dissemination of scientific research documents, whether they are published or not. The documents may come from teaching and research institutions in France or abroad, or from public or private research centers.

L'archive ouverte pluridisciplinaire **HAL**, est destinée au dépôt et à la diffusion de documents scientifiques de niveau recherche, publiés ou non, émanant des établissements d'enseignement et de recherche français ou étrangers, des laboratoires publics ou privés.



Volcanic SO₂ fluxes derived from satellite data: a survey using OMI, GOME-2, IASI and MODIS

N. Theys¹, R. Champion^{2,*}, L. Clarisse², H. Brenot¹, J. van Gent¹, B. Dils¹, S. Corradini³, L. Merucci³, P.-F. Coheur², M. Van Roozendael¹, D. Hurtmans², C. Clerbaux^{4,2}, S. Tait⁵, and F. Ferrucci⁵

¹Belgian Institute for Space Aeronomy (BIRA-IASB), Brussels, Belgium

²Spectroscopie de l'Atmosphère, Service de Chimie Quantique et Photophysique, Université Libre de Bruxelles (ULB), Brussels, Belgium

³Istituto Nazionale di Geofisica e Vulcanologia (INGV), Rome, Italy

⁴UPMC Univ. Paris 6, Université Versailles St.-Quentin, CNRS/INSU, LATMOS-IPSL, Paris, France

⁵Institut de Physique du Globe de Paris (IPGP), Paris, France

* now at: Instituto de Geofisica, Universidad Nacional Autónoma de Mexico, Mexico City, Mexico

Correspondence to: N. Theys (theys@aeronomie.be)

Received: 18 September 2012 – Published in Atmos. Chem. Phys. Discuss.: 6 December 2012

Revised: 18 May 2013 – Accepted: 21 May 2013 – Published: 20 June 2013

Abstract. Sulphur dioxide (SO₂) fluxes of active degassing volcanoes are routinely measured with ground-based equipment to characterize and monitor volcanic activity. SO₂ of unmonitored volcanoes or from explosive volcanic eruptions, can be measured with satellites. However, remote-sensing methods based on absorption spectroscopy generally provide integrated amounts of already dispersed plumes of SO₂ and satellite derived flux estimates are rarely reported.

Here we review a number of different techniques to derive volcanic SO₂ fluxes using satellite measurements of plumes of SO₂ and investigate the temporal evolution of the total emissions of SO₂ for three very different volcanic events in 2011: Puyehue-Cordón Caulle (Chile), Nyamulagira (DR Congo) and Nabro (Eritrea). High spectral resolution satellite instruments operating both in the ultraviolet-visible (OMI/Aura and GOME-2/MetOp-A) and thermal infrared (IASI/MetOp-A) spectral ranges, and multispectral satellite instruments operating in the thermal infrared (MODIS/Terra-Aqua) are used. We show that satellite data can provide fluxes with a sampling of a day or less (few hours in the best case). Generally the flux results from the different methods are consistent, and we discuss the advantages and weaknesses of each technique. Although the primary objective of this study is the calculation of SO₂ fluxes, it also enables us to assess the consistency of the SO₂ products from the different sensors used.

1 Introduction

1.1 Importance of SO₂ fluxes in volcano monitoring

Volcanism is the surface expression of internal processes, driven by heat generated in the Earth's interior. During eruptions, solid, liquid and gaseous products are generated. The main driving force behind eruptions is exsolution of gas from magma during decompression, which drives ascent through the Earth's crust. Sulfur dioxide (SO₂) is one of the most abundant compounds among volcanic gases (e.g., Le Guern et al., 1982; Symonds et al., 1994; and Oppenheimer et al., 2011, among others). Since this gas is very soluble in water and is thermodynamically unstable at low temperature, the presence of SO₂ in volcanic plumes is characteristic of a high emission temperature. SO₂ plumes are the markers of volcanic activity that may be classified into two main types.

- Explosive activity: rapid exsolution of volcanic gases in the volcanic conduit generates an ensemble of particles (tephra) through fragmentation that is ejected explosively into the atmosphere forming a plume. Heat is derived from the erupted tephra and emitted gases, and atmospheric air is entrained, which increases buoyancy. Additional latent heat may be released as water condenses and freezes in the plume. Volcanic plume heights may reach altitudes well into the stratosphere and the

maximum height depends on the mass flux rate (amount of material released as a function of time), the size distribution of erupted particles, and the local wind field.

- Effusive activity: driven by gas exsolution, although at lower rates than during magma fragmentation, molten rock products (lava flows) are erupted at the surface. This style of activity also results in particle generation but the “particles” (magma clots, vesicular scoria) are usually coarse enough to fall out close to the vent. Magmatic gases released are hot and may still produce a significant plume. Thermal energy is also available from the lava, however, these plumes tend only to reach mid-tropospheric levels except in some exceptional cases.

The main conclusion from the above is that the height at which magmatic gases are injected is not arbitrary but strongly dependent on the eruption regime. As we will show, the height at which SO₂ is present in the atmosphere also has a large influence on the techniques for detecting the amounts present, hence the height becomes a central issue for the characterization of plumes.

The most useful quantity for volcano monitoring is generally the SO₂ flux (expressed in kg s⁻¹ or kT day⁻¹), which, combined with other monitoring and petrographic data, yields unique insights into the dynamics of degassing magma. Changes in SO₂ flux are often used as an eruption precursor (e.g., Olmos et al., 2007; Inguaggiato et al., 2011; and Werner et al., 2011). The SO₂ flux is a marker of important volcanic processes as, in particular: (1) replenishment of the magmatic system with juvenile magma (e.g., Caltabiano et al., 1994; and Daag et al., 1996), characterized by a gradual increase of the measured SO₂ flux over a relatively long time period, (2) volatile exhaustion of a degassing or erupting magma body. These processes are marked by a gradual decrease in the SO₂ flux (e.g., Kazahaya et al., 2004) and, as the gases are the driving force of volcanic eruptions, generally precede the end of an eruptive period, and (3) plugging of the upper conduit system by crystallizing magma (e.g., Fischer et al., 1994). This process promotes gas accumulation under the plug, until its destruction or failure when its resistance is exceeded, which is believed to fuel long lasting “vulcanian” and “strombolian” activity (e.g., Iguchi et al., 2008). However, in certain circumstances, SO₂ measurements are less useful. This is the case when dissolution of the gas occurs in a hydrothermal system located between the magma and the surface (Symonds et al., 2001). This process, also known as scrubbing, can complicate the interpretation of SO₂ flux data, being not related to real magmatic processes. An overview on degassing from volcanoes can be found in Shinohara (2008) and Oppenheimer et al. (2011).

Measuring time series of SO₂ flux and integrating them over time is also crucially important for the quantification of the volcanic contribution to the global sulfur budget in the Earth system. SO₂ is, as a precursor of sulfate aerosols, important for air quality (Chin and Jacob, 1996) and climate

(Haywood and Boucher, 2000; Rampino et al., 1988). Stratospheric injection of SO₂ especially can have a dramatic impact on the global climate (Robock, 2000; Solomon et al., 2011; Bourassa et al., 2012). SO₂ fluxes are also key for establishing a total gas emission inventory of volcanoes. Indeed, emission fluxes of all the other volcanogenic compounds into the atmosphere are usually calculated by scaling their concentration ratio [X]/[SO₂] to the SO₂ flux (e.g., Aiuppa et al., 2008). This inventory is important in volcano monitoring (e.g., CO₂ at Stromboli, and Aiuppa et al., 2011), for studying the volcanic impact on the local atmospheric chemistry (e.g., Oppenheimer et al., 2010) and on the environment (Delmelle et al., 2002), or for quantifying greenhouse gas emissions from volcanoes.

1.2 Measurements of volcanic SO₂ fluxes

Remote measurements of magmatic volatiles have focused a lot on SO₂ because it is arguably the most readily measurable by absorption spectroscopy, due to its low background concentration in the atmosphere (~ 1 ppbv in clean air; Breeding et al., 1973), and the strong and distinctive structures in its absorption spectrum both at ultraviolet (UV) and thermal infrared (TIR) wavelengths (see the HITRAN database; Rothman et al., 2009). Measurements of volcanic SO₂ fluxes are widely carried out from the surface since the mid-seventies using the Correlation Spectrometer (COSPEC) instrument (Stoiber et al., 1983; Stix et al., 2008). More recently, consolidated measurements of total emission fluxes of SO₂ have also been made possible for a network of active degassing volcanoes (Network for Observations of Volcanic and Atmospheric Change – NOVAC; Galle et al., 2010 and references therein), with the advent of inexpensive and high-quality scanning miniaturized differential optical absorption spectroscopy instruments (Mini-DOAS).

For unmonitored volcanoes or explosive volcanic eruptions, space-based measurements of SO₂ are more appropriate. Since 1978, the Total Ozone Mapping Spectrometer (TOMS) and follow-up instruments have been measuring SO₂ in the UV spectral range (Krueger, 1983; Krueger et al., 1995), although with a rather high detection limit, and helped to establish the long-term volcanic input of SO₂ into the high atmosphere (Carn et al., 2003a; Halmer et al., 2002). In the infrared, space-based sounding of SO₂ was also possible with TOVS (Prata et al., 2003), with data going back to 1978. Over the last two decades, SO₂ measurements from space-based nadir sensors have undergone an appreciable evolution, owing to improved spectral resolution, coverage and spatial resolution (Thomas and Watson, 2010). The following instruments have been used with measurement channels that correspond to the infrared and ultraviolet SO₂ absorption bands: GOME (Eisinger and Burrows, 1998), SCIAMACHY (Afe et al., 2004), OMI (Krotkov et al., 2006), GOME-2 (Rix et al., 2009, 2012), MODIS (Watson et al., 2004; Corradini et al., 2009), ASTER (Urai, 2004; Champion et al., 2010),

SEVIRI (Prata and Kerkman, 2007; Corradini et al., 2009), AIRS (Prata and Bernardo, 2007) and IASI (Clarisse et al., 2008, 2012; Walker et al., 2012; Carboni et al., 2012). Compared to ground-based measurements, daily satellite measurements provide a comprehensive cartography of volcanic emissions at a global scale, but only the strongest sources are picked up due to the limitations in the ground resolution and/or sensitivity of the current sensors.

The standard output of satellite SO₂ retrievals is not a flux but a vertical column (VC). It represents the amount of SO₂ molecules in a column overhead per unit surface area (generally expressed in Dobson unit – 1 DU: 2.69×10^{16} molecules cm⁻²). From the SO₂ VCs, one can easily calculate the total SO₂ mass (knowing the satellite pixel size), which is a quantity useful to investigate volcanic activity. For example, Carn et al. (2008) monitored degassing of volcanoes in Ecuador and Colombia and showed that the corresponding SO₂ masses had some correlation with volcano seismicity and local observation of volcanic activity.

Estimating fluxes from emitted masses is notoriously difficult and implies more than applying (crude) scaling laws to the measured total SO₂ masses. Until now, there have been only a handful of studies addressing the problem of SO₂ flux estimates from space (Carn and Bluth, 2003; Urai, 2004; Pugnaghi et al., 2006; Campion et al., 2010; Merucci et al., 2011; Boichu et al., 2013; Carn et al., 2013). One difficulty comes from the fact that accurate flux calculations require additional information (not always well characterized) on the transport and loss of SO₂ following its release into the atmosphere. Another important issue arises from the limitations in terms of accuracy of the SO₂ VCs retrieved and subsequently used. Indeed, satellite SO₂ retrievals are not always in good agreement (see e.g., Prata, 2011). This is believed to be due to, for example, the impact of the calculated or assumed SO₂ plume height on the retrievals or to different sensitivities of the UV and IR bands to SO₂, aerosols and clouds. Note that, in spite of its general interest from a remote-sensing point of view and for the calculations of SO₂ fluxes, a comprehensive intercomparison and validation study has hitherto not yet been carried out.

For all these reasons, strong and long-lasting volcanic eruptions are challenging as they produce a vertically distributed SO₂ mass profile, which is highly variable in time in response to the instantaneous eruptive power. Once emitted, SO₂ is dispersed along different transport pathways depending on injection altitude due to the vertical shear of the horizontal wind. Consequently, the SO₂ plume may be very inhomogeneous in space. Moreover, the SO₂ plume may extend over long distances (> 1000 km) and is then often only partly covered by satellite instruments that do not provide full daily global coverage. An additional difficulty comes from the fact that a multi-layered SO₂ plume is probed by a given satellite instrument with a measurement sensitivity strongly dependent on the altitude. Furthermore, if SO₂ is distributed

in different altitude layers, each of them is characterized by different SO₂ loss rates.

The motivation for this collaborative study is an effort to estimate volcanic SO₂ fluxes using satellite measurements of plumes of SO₂. We make use of the SO₂ products from the high spectral resolution OMI, GOME-2 (UV), IASI (TIR) and multispectral resolution MODIS (TIR) instruments. These are currently used in an automated mode to provide alerts for aviation safety (as a proxy for the presence of volcanic ash) or for volcano monitoring, in the Support to Aviation Control Service (SACS; Brenot et al., 2013), the European Volcano Observatory Space Services (EVOSS; Ferrucci et al., 2013) and the Support to Aviation for Volcanic Ash Avoidance (SAVAA; Prata et al., 2008) projects. We combine and compare four different approaches and investigate the time evolution of the total emissions of SO₂ for three volcanic events (different in type) occurring in 2011: Puyehue-Cordón Caulle, Chile (using IASI), Nyamulagira, DR Congo (using OMI and GOME-2) and Nabro, Eritrea (using IASI, GOME-2 and MODIS).

Although the main objective of this study is the determination of SO₂ fluxes, we also investigate the consistency of the SO₂ products from the different sensors used. Results from the OMI and GOME-2 UV instruments (with similar vertical measurement sensitivities) are compared, as the calculation of fluxes is in principle not affected by spatial resolution issues. Furthermore, SO₂ masses results from GOME-2, IASI – both on MetOp-A – and MODIS are compared for conditions where additional information on the altitude of the plume is available.

In the next section we give an overview of the instruments and algorithms used to retrieve SO₂ vertical columns. In Sect. 3 we describe the methods to derive SO₂ fluxes. Results are presented in Sect. 4 and conclusions are given in Sect. 5.

2 Satellite SO₂ data

2.1 GOME-2

The second Global Ozone Monitoring Experiment (GOME-2) is a UV/visible spectrometer covering the 240–790 nm wavelength interval with a spectral resolution of 0.2–0.5 nm (Munro et al., 2006). GOME-2 measures the solar radiation backscattered by the atmosphere and reflected from the surface of the Earth in a nadir viewing geometry. A solar spectrum is also measured via a diffuser plate once per day. The GOME-2 instrument is in a sun-synchronous polar orbit on board the Meteorological Operational satellite-A (MetOp-A), launched in October 2006, and has an Equator crossing time of 09:30 LT (local time) on the descending node. The ground pixel size is nearly constant along the orbit and is 80 km × 40 km. The full width of a GOME-2 scanning swath is 1920 km, allowing nearly global coverage every day. In

addition to its nominal swath width, GOME-2 performs once every four weeks measurements in a narrow swath mode of 320 km with increased spatial resolution.

The spectral range and resolution of GOME-2 allows the retrieval of a number of absorbing trace gases such as O₃, NO₂, SO₂, H₂CO, CHOCHO, OClO, H₂O, BrO, as well as cloud and aerosol parameters. The SO₂ vertical columns are routinely retrieved from GOME-2 UV backscatter measurements of sunlight (Rix et al., 2009, 2012; van Geffen et al., 2008) using the Differential Optical Absorption Spectroscopy (DOAS) technique (Platt and Stutz, 2008). In a first step, the columnar concentration of SO₂ along the effective light path through the atmosphere (the so-called slant column) is determined using a nonlinear spectral fit procedure. Absorption cross sections of atmospheric gases (SO₂, O₃ and NO₂) are adjusted to the log ratio of a measured calibrated earthshine spectrum and a solar (absorption free) spectrum in the wavelength interval from 315 to 326 nm. Further corrections are applied to account for Rayleigh and rotational Raman scattering and various instrumental spectral features. In a second step, a background correction is applied to the data to avoid nonzero columns over regions known to have very low SO₂ and to ensure a geophysical consistency of the results at high solar zenith angles (where a strong interference of the SO₂ and ozone absorption signals lead to negative SO₂ slant columns). In a third step, the SO₂ slant column is converted into a vertical column using a conversion factor (called air mass factor), estimated from simulations of the transfer of the radiation in the atmosphere. It accounts for parameters influencing photon paths: solar zenith angle, instrument viewing angles, surface albedo, atmospheric absorption, scattering on molecules, and clouds. For the air mass factor calculation, a SO₂ concentration vertical profile is also required. As the information on the SO₂ plume height is generally not available at the time of observation, three vertical columns are computed for different hypothetical SO₂ plume heights: 2.5, 6 and 15 km above ground level (see Sect. 2.5). It should also be noted that an important error source exists for high SO₂ column amount (> 50–100 DU), when the SO₂ absorption tends to saturate leading to a general underestimation of the SO₂ columns.

2.2 OMI

The Ozone Monitoring Instrument (OMI) is a Dutch/Finnish instrument flying on the AURA satellite of NASA (launched in July 2004) on a sun-synchronous polar orbit with a period of 100 min and an Equator crossing time of about 13:45 LT on the ascending node. OMI is a nadir-viewing imaging spectrograph that measures atmosphere-backscattered sunlight in the ultraviolet-visible range from 270 to 500 nm with a spectral resolution of about 0.5 nm (Levelt et al., 2006). In contrast to GOME-2, operating with a scanning mirror and one-dimensional photo diode array detectors, OMI is equipped with two-dimensional CCD (charge-coupled device) detec-

tors, recording the complete 270–500 nm spectrum in one direction, and observing the Earth's atmosphere with a 114° field of view, distributed over 60 discrete viewing angles, perpendicular to the flight direction. The field of view of OMI corresponds to a 2600 km wide spatial swath. In this way complete global coverage is achieved within one day. Depending on the position across the track, the size of an OMI pixel varies from 13 km × 24 km at nadir to 13 km × 128 km for the extreme viewing angles at the edges of the swath. It should be stressed that due to a blockage affecting the nadir viewing port of the sensor, the radiance data of OMI are altered at all wavelengths for some particular viewing directions of OMI. This row anomaly (changing over time) can affect the quality of the products and hence reduce the spatial coverage of the data (see <http://www.knmi.nl/omi/research/product/rowanomaly-background.php>). In this study, the OMI row anomaly pixels have been filtered by using the quality flag (QualityFlag_PBL, Bit 11) in the OMSO2 L2 files.

From solar back-scattered measured radiances, SO₂ vertical columns are retrieved using the linear fit algorithm (Yang et al., 2007). The technique uses OMI measurements at several discrete UV wavelengths to yield total SO₂ and ozone columns as well as effective reflectivity (see also <http://so2.gsfc.nasa.gov> and <http://satepsanone.nesdis.noaa.gov/pub/OMI/OMISO2/index.html>). Radiative transfer calculations account for the observation geometry, Rayleigh and Raman scattering, atmospheric absorption, surface albedo, aerosols and clouds. Similarly to GOME-2 retrieval, the OMI SO₂ columns are provided for a set of layers with assumed center of mass heights at 0.9, 2.5, 7.5 and 17 km.

2.3 IASI

The hyperspectral Infrared Atmospheric Sounding Interferometer (IASI) was launched in 2006 onboard MetOp-A (Clerbaux et al., 2009; Hilton et al., 2012) for meteorological and scientific applications. Global nadir measurements are acquired twice a day (at 09:30 and 21:30 mean local equatorial time) with a small to medium sized footprint (from a 12 km diameter circle at nadir to an ellipse with 20 and 39 km axes at its largest swath). The instrumental characteristics of IASI are state-of-the-art with an uninterrupted spectral coverage from 645 to 2760 cm⁻¹, apodized spectral resolution of 0.5 cm⁻¹ and instrumental noise mostly below 0.2 K below 2000 cm⁻¹.

Operational products of IASI distributed by EUMETSAT include temperature and humidity profiles, surface and cloud parameters and selected trace gases. IASI measurements can be used to retrieve a host of trace gases (Clarisse et al., 2011). Some on global daily scale (e.g., CO₂, H₂O, CO, O₃, HCOOH, CH₃OH, NH₃, and CH₄), others on a more sporadic basis (e.g., HONO, C₂H₄, SO₂, and H₂S).

The spectral range from IASI covers three SO₂ absorption bands, the ν_1 band in the ~ 8.5 μ m atmospheric window; the

strong ν_3 band at $\sim 7.3 \mu\text{m}$ and the combination band $\nu_1 + \nu_3$ at $\sim 4 \mu\text{m}$. In this study, we make use of the SO₂ columns generated by the algorithm presented in Clarisse et al. (2012). The retrieval combines measured brightness temperature differences between baseline channels and channels in the SO₂ absorption ν_3 band (at 1371.75 cm^{-1} and 1385 cm^{-1}). The vertical sensitivity to SO₂ is affected by water vapor absorption and is limited to the atmospheric layers above 3–5 km height. The conversion of the measured signal into a SO₂ vertical column is performed by making use of a large look-up-table and EUMETSAT operational pressure, temperature and humidity profiles. The algorithm calculates the SO₂ columns for a set of pre-defined hypothetical altitude levels: 5, 7, 10, 13, 16, 19, 25 and 30 km. The main features of the algorithm are a wide applicable total column range (over 4 orders of magnitude, from 0.5 to 5000 DU), low noise level and a low theoretical uncertainty (3–5 %).

2.4 MODIS

The Moderate Resolution Imaging Spectroradiometer (MODIS) is a multispectral instrument on board the NASA-Terra and NASA-Aqua polar satellites (Barnes et al., 1998, <http://modis.gsfc.nasa.gov>). Terra's descending node (from north to south) crosses the Equator in the morning at about 10:30 LT, while the Aqua ascending node (south to north) crosses the Equator at about 13:30 LT. MODIS acquires data in 36 spectral bands from visible to thermal infrared and its spatial resolution varies between 250, 500 and 1000 m. The sensor scans $\pm 55^\circ$ across-track resulting in a 2330 km swath and full global coverage every one to two days.

As IASI, MODIS covers all the three infrared SO₂ absorption bands, ν_1 , ν_3 and $\nu_1 + \nu_3$. The $\nu_1 + \nu_3$ absorption feature (channel 23) lies in a transparent window but is very weak and affected by scattered solar radiation during the day. The strongest ν_3 signature (channel 28) is highly affected by the atmospheric water vapor absorption so that the SO₂ retrieval is accurate only for plumes in the middle troposphere/lower stratosphere. Finally the ν_1 feature (channel 29) lies in a relatively transparent spectral region and can be used to retrieve also the lower tropospheric SO₂. The latter is, however, highly affected by the volcanic ash absorption and the retrieval is very sensitive to uncertainties on surface temperature and emissivity (Corradini et al., 2009; Kearney et al., 2009).

The SO₂ retrieval scheme for multispectral TIR measurements was first described by Realmuto et al. (1994) for the TIMS airborne spectrometer and was based on a weighted least squares fit procedure using instrumental measured radiances and simulated radiances obtained by varying the SO₂ amount. Further work carried out by several authors allowed the extension of SO₂ retrieval to different satellite sensors such as MODIS (Watson et al., 2004), ASTER (Realmuto et al., 1997; Pugnaghi et al., 2006) and SEVIRI (Corradini et al., 2009). Here we refer to the procedure scheme described

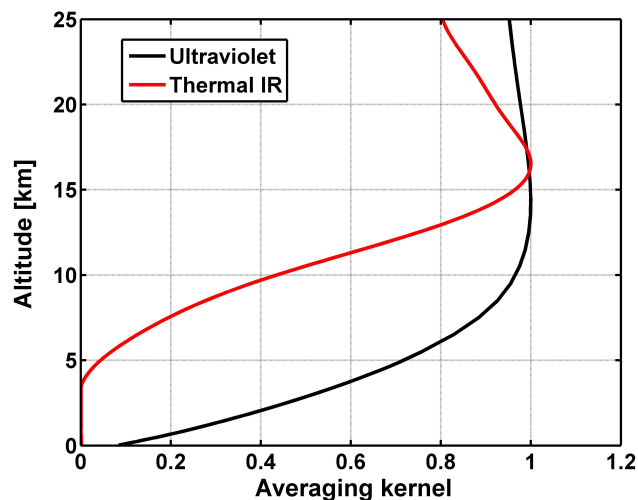


Fig. 1. Averaging kernels for satellite retrievals of SO₂ at ultraviolet and thermal infrared wavelengths for a typical clear-sky tropical atmosphere.

by Corradini et al. (2009) in which the SO₂ column amount is retrieved on a pixel by pixel basis using the ν_3 signature and top of the atmosphere (TOA) simulated radiances.

The TOA radiances look up tables are obtained from MODTRAN 4 computations driven by the atmospheric profiles (pressure, temperature and humidity), the plume geometry (plume altitude and thickness) and varying the SO₂ amounts. The volcanic cloud top height has been determined assuming the cloud top temperature of the opaque parts of the cloud to be equal to the ambient temperature and deriving the height from the temperature vertical profile (Prata and Grant, 2001; Corradini et al., 2010).

2.5 Altitude-dependent sensitivity

One of the largest errors on the SO₂ columns is due to a poor a priori knowledge of the height of the SO₂ plumes. To assess this effect on the retrievals presented above, it is useful to consider the satellite SO₂ column averaging kernels. The averaging kernel is defined as the derivative of the retrieved vertical column with respect to the partial column profile (Jacobian), and basically reflects the changes in measurement sensitivity along the vertical axis. As an illustration, Fig. 1 shows examples of functions for UV (GOME-2 and OMI retrievals) and thermal IR (IASI and MODIS ν_3 retrievals) wavelengths.

The UV averaging kernel in Fig. 1 shows the typical behavior of the satellite measurement sensitivity to SO₂ located at different altitudes, with almost constant values in the upper troposphere and lower stratosphere and then a decrease below ~ 10 km, essentially due to increasing Rayleigh scattering in the troposphere. One can see that SO₂ located at the surface will produce a signal an order of magnitude lower than if it was in the stratosphere. For the TIR measurement,

the effect of altitude on the measurement sensitivity is modest in the stratosphere but is critical in the troposphere because of the sharp temperature gradient. The maximum value is reached at the tropopause (~ 16 km), where the thermal contrast between the plume and the background radiation is highest. Below 5 km altitude, almost no sensitivity to SO₂ is observed because of strong water vapor absorption.

It should be emphasized that no conclusions can be drawn from Fig. 1 on the SO₂ detection limit as the averaging kernel calculations are independent of the signal-to-noise ratios (specific to each instrument).

3 Methods to derive SO₂ fluxes

As evocated previously, turning from SO₂ VCs or masses to flux data is nontrivial. In this section, we review several existing methods; a summary of which can be found in Table 1 (Sect. 5).

All the techniques are based on mass conservation in that a satellite SO₂ image obtained on a given day reflects the budget of SO₂ emissions and losses (through oxidation and/or deposition) since the start of the eruption. Hence, the retrieval of SO₂ fluxes from a sequence of consecutive SO₂ images generally requires a sufficiently good estimate of the loss term, although in some instances the loss of SO₂ may be considered negligible (e.g., close to the volcano; McGonigle et al., 2004). The simplifying assumption we made throughout this work and which is also supported by literature (review in Eatough et al., 1994), is that the kinetics of the SO₂ removal follow a first order law:

$$\frac{\partial c}{\partial t} = -k \cdot c, \quad (1)$$

where c is the SO₂ concentration and k is the reaction rate constant (s^{-1}), which is also often expressed as $k = 1/\tau$, where τ is the SO₂ e-folding time. A difficulty of using this assumption is that k is extremely variable, being sensitive to a number of poorly controlled and spatially variable factors such as plume altitude, cloudiness and atmospheric humidity (Eatough et al., 1994). A major factor is the availability of atmospheric oxidants in the gas (OH radical) and aqueous (H₂O₂) phases. Wet and dry deposition, heterogeneous chemistry and sequestration of gases in ice are other important processes influencing the SO₂ loss rate. The reader is referred to the literature (e.g., Rose et al., 1995; Chin and Jacob, 1996; Graf et al., 1997; Jacob, 1999; Chin et al., 2000; and Lee et al., 2011) for an overview of the physical and chemical processes of SO₂ removal. The literature on SO₂ reactivity in volcanic plumes (review in Oppenheimer et al., 1998) provides rate constants that span three orders of magnitude, from $\sim 10^{-4} \text{ s}^{-1}$ for an ash-rich plume in the tropical boundary layer (Rodriguez et al., 2008) to $\sim 10^{-7} \text{ s}^{-1}$ for a plume residing in the superdry and cold stratosphere (Read et al., 1993).

3.1 Box method

Arguably, one of the simplest methods to derive a volcanic flux is to consider the SO₂ mass contained within a circle or a box whose dimensions correspond to the total distance traveled by the plume in one day (Lopez et al., 2013) and which are usually determined using a trajectory model or radiosonde wind profile. To account for SO₂ loss, an age dependent correction $e^{t/\tau}$ is applied, where t is the plume age defined as the ratio of the distance between a given pixel and the volcano and the wind speed. The daily flux is then simply calculated by dividing the mass within the box by 1 day. Note that this method is limited to cases where the age correction is well defined and accurate. It may be problematic at low altitude when the kinetics of the SO₂ reaction is fast and the plume quickly disperses below the detection limit.

3.2 Traverse method

The traverse method is derived from the approach used since the 1970s to operate the COSPEC on volcanoes from a mobile platform (Stoiber et al., 1983; Stix et al., 2008). It has been applied by several authors (Urai, 2004; Pugnaghi et al., 2006; Campion et al., 2010; Merucci et al., 2011) to high spatial resolution satellite images (ASTER and MODIS), as it enables one to retrieve fluxes from small plumes which can then be compared more easily to data obtained from ground-based measurements.

Let us define traverses as plume cross sections, i.e., planes perpendicular to the surface and intercepting the transport axis of the plume. The general formulation of the SO₂ mass flux through a surface S is given by

$$F = \int_S c \mathbf{v} \cdot \mathbf{n} dS, \quad (2)$$

where c is the SO₂ mass concentration (kg m^{-3}), \mathbf{v} is the wind vector and \mathbf{n} the unit vector normal to the surface S . Integrating over the vertical and assuming a constant wind field, the SO₂ flux through a traverse can be calculated as

$$F = \left(\sum_i \text{VC}_i l_i \right) v \cos(\theta), \quad (3)$$

where VC_i is the column amount, l_i the horizontal length of the i -th pixel of the profile, v the wind speed and θ the angle between the profile direction and transport direction. For simple wedge shaped plumes, the plume direction can be detected automatically by seeking the pixels around the volcano that have the maximal column amount, and an automatic traverse definition can also be easily implemented. A different procedure is based on the interpolation between the atmospheric wind direction profile, collected in the area of interest, and the plume altitude. Note that assuming a single wind speed over the whole plume area can lead to significant

error, especially if the plume has a large dimension. Although not implemented in the present paper, a solution is to extend the approach to use a 2-D wind field gridded to the resolution of the satellite.

Merucci et al. (2011) have demonstrated that considering multiple traverses at increasing distances from the volcano, one can reconstruct the flux history up to several hours before the overpass of the satellite, via the simple relation that exists between the transport speed, distance and duration. Further improvement can be obtained by applying a correction to the SO₂ flux for the loss rate. For a profile at a distance d we have

$$F(d) = \left(\sum_i VC_i l_i \right) v \cos(\theta) \cdot \exp(d/v \cdot \tau). \quad (4)$$

Then the flux of SO₂ as a function of time is easily obtained via the relation $t' = t_{\text{obs}} - t$ between the time elapsed since the start of eruption (t'), the time delay between the start of the eruption and the satellite overpass (t_{obs}) and the plume age ($t = d/v$).

It should be noted that the traverse method in its simplest form (Eq. 4) is only applicable under the assumption of passive advection of the gas in a constant wind field.

3.3 Delta-M method

The “delta-M” method was applied to SO₂ measurements for the first time by Krueger et al. (1996), and has also been applied more recently to fire emissions by Yurganov et al. (2011). It relies on time series of the SO₂ mass obtained by successive satellite overpasses and on the mass conservation equation:

$$\frac{dM(t)}{dt} = F(t) - k \cdot M(t). \quad (5)$$

In this equation, M is the total mass contained in the plume, F is the volcanic SO₂ flux and $-k \cdot M$ is the SO₂ loss term that takes into account actual chemical processes (gas phase oxidation, dry and wet deposition), loss from transport, but also the dilution of the outer part of the plume below the detection limit of the satellite. Here we assume the loss rate to be independent of position.

Satellite observations provide discrete time series of the total SO₂ mass present in the atmosphere, with a time resolution that depends on the orbiting parameters and swath width of the instruments. The delta-M method inverts Eq. (5) to yield SO₂ fluxes from SO₂ mass time series as provided by the satellite. From this point, two slightly different approaches can be used. The simplest one is to solve analytically the differential equation (Eq. 5) assuming a constant flux over the time interval Δt between two consecutive mass estimates M_i and M_{i-1} :

$$F = k \cdot \frac{M_i - M_{i-1} \cdot e^{-k\Delta t}}{1 - e^{-k\Delta t}}. \quad (6)$$

A prerequisite for this method is that the whole plume must be covered. This might be an issue for very large plumes using data from a single satellite instrument with limited spatial coverage. As these series do contain some uncertainty, the resulting flux curves often display spikes that are likely not related to real source variation. The assumption of a constant k might also lead to systematic error, since it actually varies with a number of intrinsically variable parameters. Smoothing of the resulting flux series may be necessary to make these spikes disappear.

A second approach is to fit an analytic function to the mass time series; the time-dependent flux is then straightforwardly obtained by applying Eq. (5) to the fitted curve.

In the following, the function chosen to fit the data has the form

$$M = K_4 + (K_1 \cdot t - K_4) \cdot \exp(-K_2 \cdot t^{K_3}), \quad (7)$$

where $K_{1,2,3,4}$ are the fit parameters. This form was chosen to fit the basic skewed shape of the time series mass curve. Hereafter, we will refer to the “skewed shape” method to designate this flux calculation technique. Note that fitting a function to a naturally variable dataset is not necessarily easy, and may lead to systematic errors especially for eruptions having a long duration and/or a complex behavior. Applying a low-pass filter to the data is sometimes necessary to have smooth enough time series.

A major advantage of the delta-M and skewed shape techniques is that they are completely independent of the wind field, and hence applicable even if the plume is sheared in a complex wind field or if the plume is stagnating around the volcano in a low wind environment. The main drawback of these techniques is that they yield only first order estimates of the fluxes: the time-dependent fluxes are either too smooth or may contain spikes.

3.4 Inverse modeling method

The applicability of the methods described above is limited to cases where (a) SO₂ is injected at a single altitude so that errors related to the plume height (Fig. 1) can be considered reasonably small, and (b) the SO₂ plume has a simple geometry and/or is well covered by the satellite sensors. Clearly, these conditions are not always met.

For multi-layered SO₂ plumes, a more elaborate technique to retrieve SO₂ fluxes has been designed, which exploits atmospheric transport patterns to derive time and height resolved SO₂ emission profiles (see also e.g., Hughes et al., 2012). To achieve this goal, we have followed the inversion approach that has already been applied in the past for the estimation of the vertical profile of SO₂ emission after the short-lasting eruptions of Jebel al Tair (Eckhardt et al., 2008) and Kasatochi (Kristiansen et al., 2010), and more recently for the retrieval of time- and height-resolved volcanic ash after the Eyjafjallajökull eruption (Stohl et al., 2011). In this section, we only briefly summarize the concept of the method,

the reader is referred to Sects. 4.1 and 4.3 for details on the inversion settings.

The inversion scheme couples satellite SO₂ column data with results from the FLEXPART Lagrangian dispersion model v8.23 (Stohl et al., 1998, 2005, publicly available at <http://transport.nilu.no/flexpart>). FLEXPART is used to simulate the transport of air masses. It is driven by the 3-hourly European Centre for Medium-Range Weather Forecasts (ECMWF) wind field data with 1° × 1° resolution. Simulations extending over Δ*t* days are made for a number *n* of possible emission scenarios, characterized by release intervals in altitude and time (emission cell). The output of the model is given every 3 h on a predefined altitude grid and on a latitude/longitude grid (dependent on the event studied).

For each emission cell, the simulation is performed with a unit mass source assuming no chemical processes (tracer run). The output of the model (expressed in ng m⁻³) is interpolated in space and time to closely match the satellite observations, and then converted to an atmospheric column by integrating the modeled profiles. The SO₂ columns (expressed in DU) are calculated using a simple unit conversion factor and by applying the satellite averaging kernels (Fig. 1) – estimated for each measured pixel – to the concentration profiles before integration. Moreover, a plume age dependent correction $e^{t/\tau}$ is applied for each emission altitude to account for SO₂ losses, where *t* is the time since the release and τ the e-folding time.

From the resulting modeled columns, it is possible to simulate measurements using a simple linear combination:

$$y = Kx, \quad (8)$$

where *y* is the measurement vector containing the observed SO₂ columns (*m* × 1), *x* is the state vector gathering the SO₂ mass in each emission cell (*n* × 1) and *K* is the forward model matrix calculated with FLEXPART (*m* × *n*), describing the physics of the measurements.

The inversion of the emissions (*x*) from Eq. (8) is an ill-posed problem, and we have used the well-known optimal estimation method (Rodgers, 2000): a Bayesian method for retrieving a most probable state based on measurements, the expected measurements errors, best guesses of the target state vector prior to measurement, and the associated covariance matrix. The inversion is done by minimizing a cost function *J*:

$$J(x) = (y - Kx)^T \mathbf{S}_e^{-1} (y - Kx) + (x - x_a)^T \mathbf{S}_a^{-1} (x - x_a), \quad (9)$$

where \mathbf{S}_e is the measurement error covariance matrix, x_a is the a priori value of *x* and \mathbf{S}_a is the associated covariance matrix. The first term of Eq. (9) measures the misfit between model and observation and the second term is the deviation from the a priori values.

Following Rodgers (2000), the retrieved state vector \hat{x} is obtained from the maximum a posteriori solution:

$$\hat{x} = x_a + F \circ [(K^T \mathbf{S}_e^{-1} K + \mathbf{S}_a^{-1})^{-1} K^T \mathbf{S}_e^{-1}] (y - Kx_a), \quad (10)$$

where \circ denotes a Schur product (element-by-element multiplication). *F* is a filter matrix filled (by 0 or 1) in such a way that the emission *i* at the time *t_i* is constrained only by measurements at *t_j* where $t_i \leq t_j \leq t_i + \Delta t$ days.

Generally the retrieval yields negative emissions for some grid cells. To avoid these unphysical results, several iterations (< 10) of the retrieval are necessary where \mathbf{S}_a is adjusted at each iteration for the elements of the vector with negative values (see Eckhardt et al., 2008 for details).

It should be stressed that, compared to the methods described in Sects. 3.1–3.3, the inverse modeling technique is more strongly dependent on accurate wind field data and is subject to possible misfits (e.g., due to the emission time step used).

4 Case studies

In the following we present the SO₂ flux results obtained with the different techniques presented in Sect. 3 for each of the three volcanoes studied: Puyehue-Cordón Caulle, Nyamulagira and Nabro.

4.1 Puyehue-Cordón Caulle

On 4 June 2011, an explosive eruption started at the Puyehue-Cordón Caulle volcanic complex in central Chile (40.59° S, 72.12° W; 2236 m a.s.l.), after a few months of increased seismic activity (Smithsonian Institution, 2012). The initial phase of the eruption was highly energetic and produced a sustained column that was bent by the high altitude winds at the tropopause (~ 12–13 km; see e.g., Klüser et al., 2013). After four days, the eruption gradually decreased in intensity, but continued for several months. The ash and SO₂ plume circled the Earth three times between 50–80° S (Klüser et al., 2013; Clarisse et al., 2012), before being dispersed below the detection limit of the satellites. We investigate this eruption using IASI, as it was the most successful at measuring SO₂ from this eruption. Indeed, the performances of UV sensors were limited because of low UV radiation level and strong ozone absorption typical for high solar zenith angle conditions (> 65°) during austral winter. The first IASI overpass occurred about seven hours after the beginning of the eruption and captured the concentrated initial plume. The next overpasses revealed lower SO₂ values in the vicinity of Puyehue-Cordón Caulle but the early plume could easily be identified moving eastward from the volcano.

As mentioned in Sect. 3, a prerequisite to any SO₂ flux calculation is the evaluation of the SO₂ loss term. For this purpose, it is useful to look at the retrieved total SO₂ mass as a function of date as displayed in Fig. 2 (left plot).

The time series of SO₂, here assuming a plume height of 13 km, shows an increase in mass in the first three days after the start of the eruption and then exhibits a decrease as a result of the progressive oxidation of SO₂. After 10 June,

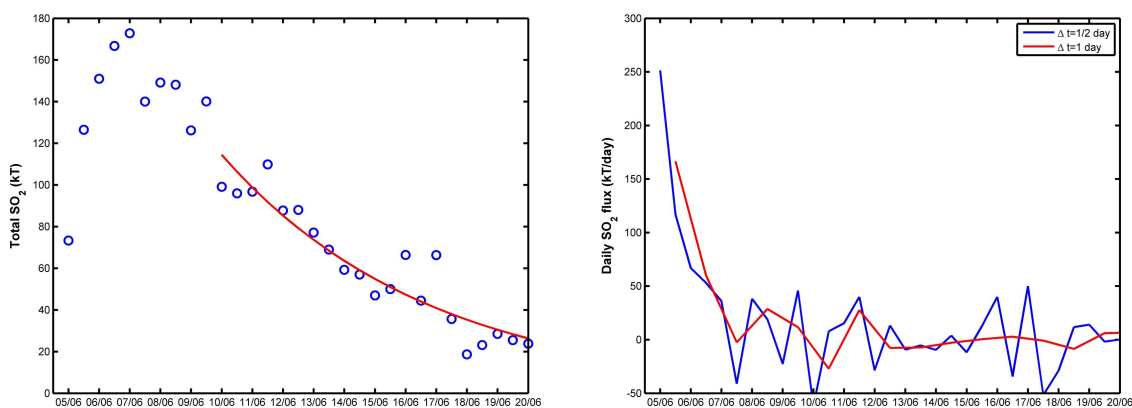


Fig. 2. (Left plot) Time series of SO₂ total mass measured with IASI for the 2011 eruption of Puyehue-Cordón Caulle (blue dots). The red curve is an exponential function fitted to the data (e-folding time: 6.8 days). A plume height of 13 km is assumed. (Right plot) Daily SO₂ fluxes calculated with the delta-M method applied to the total SO₂ mass time series estimated on a half-daily and daily basis.

the eruption was continuing but as a result of their low intensity and altitude these emissions were below the detection limit of IASI retrievals. We fitted an exponential function to the decay observed at the tail of the total SO₂ mass curve resulting in an estimated e-folding lifetime of 6.8 days, typical for a dry atmosphere. Note that as the plume dilutes, parts of the plume will drop below the detection limit, so that the real e-folding lifetime is probably a bit longer than what we estimate here.

From the SO₂ mass time series, we then applied the delta-M method (Sect. 3.3) yielding SO₂ fluxes averaged over a time interval Δt (Eq. 6). The results are displayed in Fig. 2 (right plot) for half-daily and daily mass estimates ($\Delta t = 1/2$ or 1 day). Note that the flux estimates for the first half-day and first day have been calculated using a time interval of 7 and 19 h, respectively (instead of 12 and 24 h), as it is more in line with the actual time between the start of the eruption and the first observations. One can see in Fig. 2 that sometimes negative fluxes are returned and that the fluxes time series are quite noisy (especially for the half-daily estimates). This is because the method relies on accurate estimates of consecutive SO₂ masses, which can be problematic for large and dispersed plumes. The erratic behavior of the half-day fluxes on 17 and 18 June is for instance due to the method used for a.m./p.m. differentiation which for these days causes portions of the plume to be counted twice. This behavior disappears when looking at the daily flux.

In addition to the simple delta-M method, Puyehue-Cordón Caulle was found to be an ideal case study to test the traverse method (Sect. 3.2) because of the modest SO₂ loss term and because the SO₂ injection occurred in a strong and well constrained wind field leading to steady and almost one-dimensional plumes (see Fig. 3). The analysis was made for a sequence of four consecutive SO₂ images right after the start of the eruption; each time, the traverses were defined for a well-chosen portion of the plume (close to the volcano).

Following the traverse method formulation (Eq. 4), we calculate the SO₂ fluxes using the MERRA wind fields (available at <http://disc.sci.gsfc.nasa.gov/giovanni/overview/>) extracted at the location of the volcano and the time of observations. It allows us to reconstruct a high-resolution chronology of the SO₂ flux during the eruption (Merucci et al., 2011). This is shown in Fig. 4, where the results from four consecutive IASI snapshots (4 June p.m. to 6 June a.m.) are displayed.

A striking feature is the fairly good overlap of the flux data for two successive overpasses, in spite of the constant wind field used in the calculation (for each IASI image). This clearly strengthens the adopted approaches. Note that for the first overpass, larger (and also more scattered) values are observed; this is probably due to the impact of ash (high concentrations in the early plume) on the retrieved values.

Compared to the delta-M method (also shown on Fig. 4, for $\Delta t = 1/2$ day), results from the traverse method provide more information on the temporal variations of the emissions, in particular the peak occurring about 6 h after the beginning of the eruption, not seen with the lower time resolution delta-M method. However, on average, the delta-M and traverse methods give values that are consistent with each other: $\sim 180 \text{ kT day}^{-1}$ on the first day then dropping to $\sim 60 \text{ kT day}^{-1}$ on the second day.

In order to consolidate the flux results of Fig. 4, we have also applied the inversion modeling method (Sect. 3.4) to the Puyehue-Cordón Caulle event. Since the injection heights are reasonably well known, we have used a small number of atmospheric layers but worked at a high temporal resolution. More precisely, emission grid cells have been defined as 3 layers of 1 km thickness from 11 to 14 km and 2-hourly intervals for the period 4–7 June 2011, starting at the onset of the eruption. The FLEXPART simulations extended over 3 days after each release period and the results are given on a $0.5^\circ \times 0.5^\circ$ output grid. Following the description in

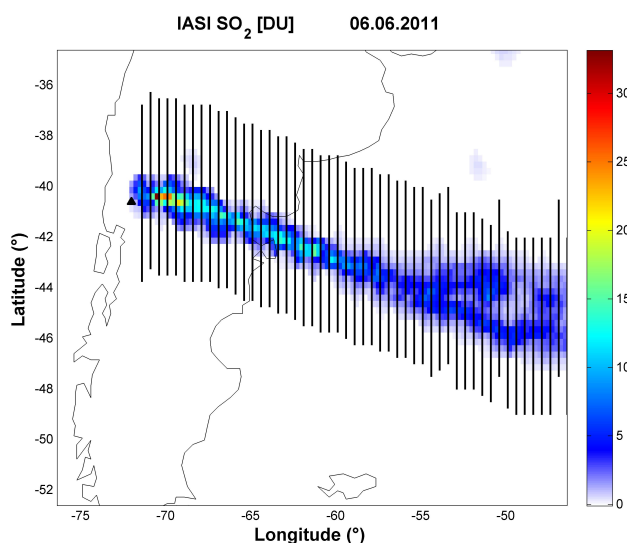


Fig. 3. SO₂ columns from IASI measurements for 6 June 2011 (morning overpass) over the Puyehue-Cordón Caulle volcano. The lines correspond to the different traverses used for the SO₂ fluxes calculation. A plume height of 13 km is assumed. The Puyehue-Cordón Caulle volcano is marked by a black triangle.

Sect. 3.4, a plume age dependent correction is applied using an e-folding time τ of 6.8 days (Fig. 2). The measurement vector y (Eq. 8) is assembled with the SO₂ columns measured by IASI (> 1 DU) for the period between 4 and 9 June 2011 (daytime and nighttime overpasses) and evaluated on the output grid. The vertical column calculation is made assuming a plume height of 13 km. For the a priori emissions, a single value of 5 kT/2 h of SO₂ is used for each emission grid cell to form x_a . The a priori covariance matrix S_a has been chosen as diagonal with values corresponding to 250 % errors on the a priori emissions. For the observation error covariance matrix S_e , a diagonal matrix has been chosen and we assumed a conservative 50 % + 1 DU uncertainty on the measurements.

The inversion results are displayed in Fig. 4 (grey bars), where the a posteriori emissions have been vertically integrated and scaled to yield SO₂ fluxes. Overall, the results of Fig. 4 are very positive as they show that, for the case of Puyehue-Cordón Caulle, it is possible to resolve the volcanic SO₂ emissions with a time step as short as ~ 2 h. One can see that there is a very good correspondence between the results of the traverse and inversion modeling methods, which strengthens both approaches.

By integrating the fluxes of Fig. 4, we estimate the total SO₂ mass released by Puyehue-Cordón Caulle during the first two days of eruption to be about 200 kT. However, this estimate is a lower bound as it does not include the contribution of SO₂ emitted at lower altitude.

As an illustration of the inversion modeling method, Fig. 5 shows daily SO₂ column maps retrieved from IASI and sim-

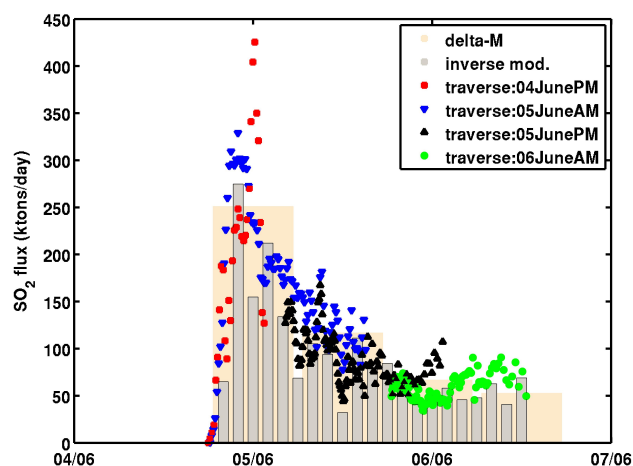


Fig. 4. SO₂ flux evolution through the first two days of the Puyehue-Cordón Caulle eruption obtained from the traverse method (analysis of four consecutive IASI images) and compared to the delta-M ($\Delta t = 1/2$ day; pale orange bars) and inversion modeling methods (grey bars).

ulated by FLEXPART using the retrieved emissions ($K \cdot \hat{x}$), for 6 and 7 June 2011. As can be seen, a fair agreement is found between IASI and FLEXPART both for the dispersion patterns and the absolute SO₂ column values.

4.2 Nyamulagira

Nyamulagira (1.41° S, 29.20° E, 3058 m a.s.l.) erupted over 40 times in the last century, and is known to be one of the main sources of volcanic SO₂ worldwide (Carn et al., 2003). Based on TOMS measurements, the SO₂ output from Nyamulagira has been monitored during the 1979–2005 period, and a majority of eruptions produced more than 0.8 MT of SO₂ (Bluth and Carn, 2008).

Almost two years after the last eruption of 2–29 January 2010, Nyamulagira started erupting again, on 6 November 2011 (18:45 UTC) with observed lava fountains reaching up to 300 m and with large amounts of SO₂ easily detected from space. The eruption lasted five months, until 15 March 2012.

For several weeks, the plume of SO₂ was monotonically drifting westward from the volcano (as illustrated in the inset in Fig. 6); its altitude was between 4 and 8 km (based on wind direction data from ECMWF).

We investigated the 2011–2012 Nyamulagira eruption for the first month (when the signal was the strongest) using the UV sensors (OMI and GOME-2) as they are the most suitable to monitor this event owing to their good sensitivity down to the surface. A strong signal of SO₂ could also be detected with IASI especially at the beginning of the eruption, but the data are more difficult to use because of increasing errors on the columns with decreasing plume altitude (the plume of SO₂ was low in the atmosphere).

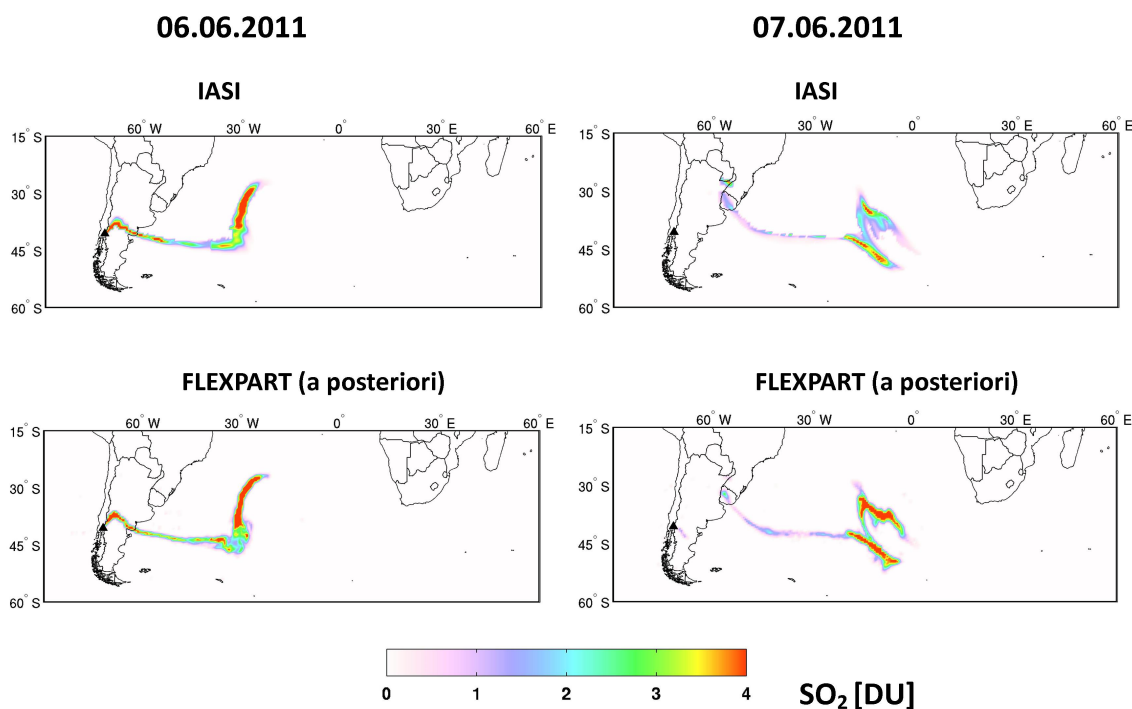


Fig. 5. SO₂ columns measured by IASI (evening overpasses) and simulated by FLEXPART using the a posteriori emissions from the inversion for 6 June 2011 (left panels) and 7 June 2011 (right panels). The measured columns are averaged over the $0.5^\circ \times 0.5^\circ$ FLEXPART output. The simulated columns are (1) calculated from the SO₂ profiles weighted by the corresponding altitude-dependent measurement sensitivity functions (averaging kernels) and (2) interpolated at the time of observations. The Puyehue-Cordón Caulle volcano is marked by a black triangle.

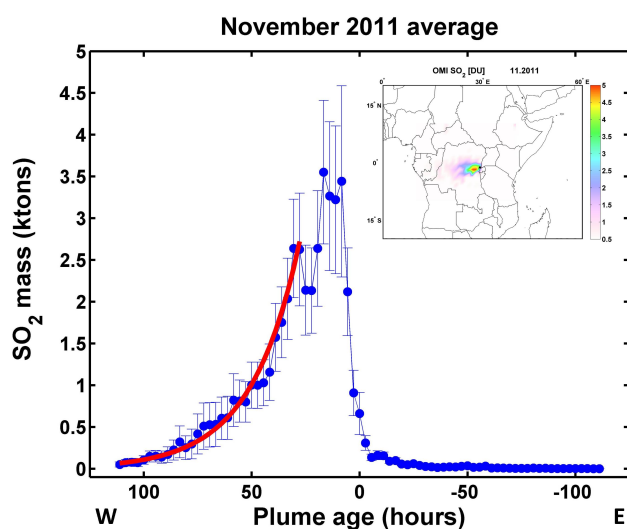


Fig. 6. OMI daily SO₂ mass as function of plume age (see text) averaged for November 2011. The inset shows the monthly averaged SO₂ columns measured by OMI above Nyamulagira for November 2011.

Since the plume altitude is not known exactly, we simply took the available middle tropospheric altitude (center of mass heights of 6 and 7.5 km for GOME-2 and OMI, respectively) for the SO₂ vertical column calculation. This assumption is a source of uncertainty but the effect on the SO₂ columns is modest, with errors lower than 30 % (Fig. 1). In order to isolate the volcanic SO₂ signal from the background noise, an SO₂ column threshold was assigned ($VC > VC_{lim} = \overline{VC} + 3 \cdot \sigma_{VC}$), using the mean (\overline{VC}) and standard deviation (σ_{VC}) of daily SO₂ VCs retrieved in the background region (Carn et al., 2008).

As already mentioned, the SO₂ plumes from Nyamulagira had a rather simple geometry owing to fairly stable meteorological conditions. This situation facilitates the calculation of the loss term (see e.g., Beirle et al., 2011) and of the SO₂ fluxes. The first loss term has been estimated from the decay observed in the total SO₂ mass downwind (westward) of the volcano. This is illustrated in Fig. 6 showing the averaged SO₂ mass for November 2011 as a function of plume age, expressed in hours.

The values are calculated using daily OMI SO₂ columns integrated along traverses perpendicular to the wind vector. The plume age is the ratio of the distance (defined as positive downwind) between a given pixel and the volcano and the wind speed. For each day, the wind vector is derived from

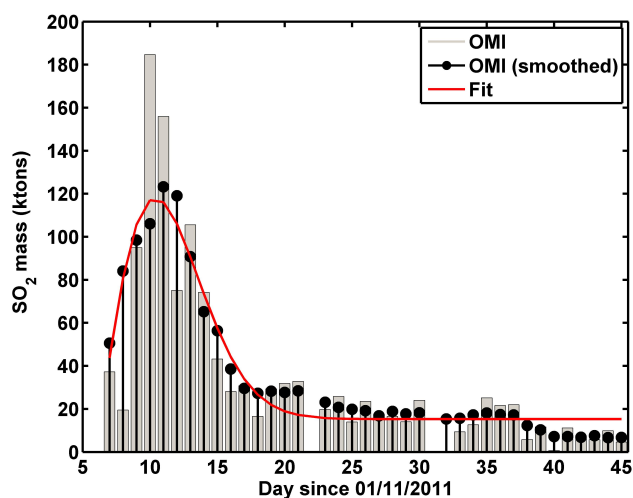


Fig. 7. Time series of SO₂ total mass measured with OMI for the 2011 eruption of Nyamulagira. Shown are the daily values (grey), 5-day moving averages (black) and a skewed shape function fitted to the smoothed curve (red).

the visual analysis of the transport direction of the plume and comparison with the $1^\circ \times 1^\circ$ ECMWF 24 h averaged profile (closest to the volcano) of wind direction and speed. From Fig. 6, the fitting of an exponential function (red curve) to the SO₂ mass data is straightforward and yields a mean SO₂ e-folding time of 22.5 h, in good agreement with the literature (Bluth and Carn, 2008). Moreover, we repeated the same analysis using GOME-2 data and obtained a consistent value of 24.9 h.

Having reasonably accurate values of the SO₂ loss term for both OMI and GOME-2, we can estimate the fluxes using some of the methods described in Sect. 3. We start to apply these methods to the data from OMI as it is the instrument with the most favorable spatial resolution and noise level.

We first used the delta-M method. Similarly to the analysis of the Puyehue-Cordón Caulle eruption, it is applicable to the daily SO₂ mass values (Fig. 7, grey bars) and does not require information on the daily wind fields.

We also tested the skewed shape method (Sect. 3.3). Since it implies the adjustment of a continuous and regular function (Eq. 7), we applied this method to the (smoothed) 5-day moving averages SO₂ mass time series (Fig. 7, black stems with the fitted curve in red).

The resulting fluxes are shown in Fig. 8 for both methods.

Also shown in Fig. 8, are the results from the box (Sect. 3.1) and traverse (Sect. 3.2) methods. For the box method, we selected the days for which the SO₂ plume had a simple geometry, was well covered by the satellite instrument and when the wind speed was not anomalously high or low. We calculated a daily flux (Fig. 8, blue bars) based on the data contained in a circle around the volcano, with a radius changing each day depending on the wind speed.

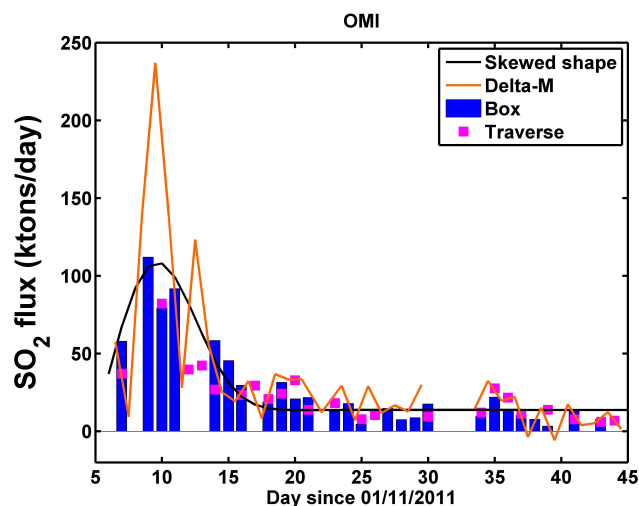


Fig. 8. Daily SO₂ fluxes derived from different methods applied to OMI data for the first month of the 2011 eruption of Nyamulagira.

For the traverse method, daily values (Fig. 8, pink squares) were calculated whenever possible by averaging the fluxes over the closest five to ten traverses (excluding the first one because of sub-pixel dilution issues). Note that the reconstruction of short-term variations of the flux, as for Puyehue-Cordón Caulle, was found difficult. Short and variable SO₂ lifetime, as well as a poorly constrained wind field far away from the volcano makes this kind of approach too uncertain in this case.

In general, the retrieved SO₂ fluxes from the different methods are found to be in reasonable agreement, all showing large values (40–230 kT day⁻¹) for the first week of the eruption and then a flattening afterwards (10–30 kT day⁻¹) reflecting a calmer eruptive regime. In total, we estimate the SO₂ amount produced by Nyamulagira during the first month of eruption to be of about 1 MT.

Compared to the other methods, the delta-M method shows more variable and uncertain results. This is mainly because the plume is often not completely covered by OMI for two consecutive days. Now comparing the results of the skewed shape, box and traverse methods, the differences observed can be explained by small differences in selection of data, details in the settings and uncertainties on the wind speed.

To consolidate the results, we also analyzed the GOME-2 SO₂ data using the same techniques as for OMI. The results are displayed in Fig. 9, together with the OMI fluxes. Only the data from the circle and skewed shape methods are shown for better readability.

A general consistency is found between OMI and GOME-2 results, although GOME-2 has a tendency to produce higher values than OMI (probably because of differences in the treatment of clouds in the retrievals and in meteorological conditions). As these results are in principle independent of

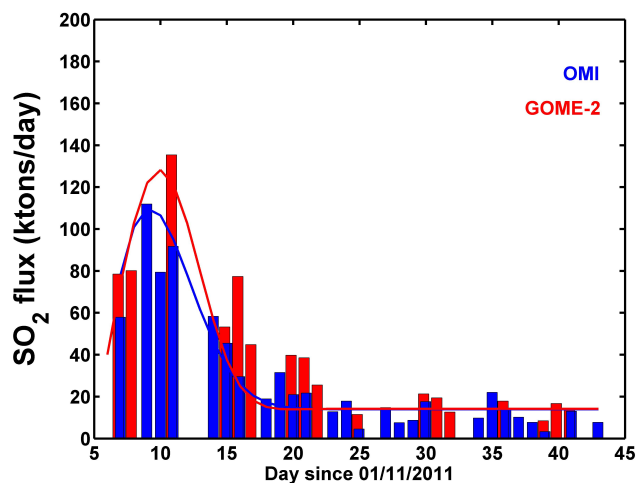


Fig. 9. Time series of Nyamulagira SO₂ fluxes retrieved from the box (bars) and skewed shape (lines) methods applied to OMI and GOME-2 data.

the pixel size, they constitute however a valuable element of successful satellite–satellite comparison, complementing existing SO₂ flux comparison exercises (e.g., Campion, 2011; and Campion et al., 2012).

Finally, it is important to note that, at the beginning of the event, the SO₂ fluxes (Figs. 8, 9) could be underestimated because of SO₂ absorption saturation. However, from the inspection of the SO₂ column values, we believe the effect on the fluxes is small, with differences lower than 10 %.

In an attempt to ascertain a reasonable uncertainty on the derived fluxes, we conducted sensitivity tests by varying the different important parameters of the retrieval. Based on these sensitivity tests, a typical error for both OMI and GOME-2 estimates is of about 50 %, and includes the uncertainties on the SO₂ columns, cutoff values used, SO₂ losses and wind fields.

4.3 Nabro

Nabro (13.37° N, 41.70° E, 2218 m a.s.l.) is located in the African rift zone at the border between Eritrea and Ethiopia. In spite of no reported historical eruptions, Nabro erupted in the evening of 12 June 2011 around 20:30 UTC, expelling a powerful plume composed of enormous amounts of steam and SO₂, with little amounts of ash. At the beginning of the eruption, SO₂ was massively injected at tropical tropopause levels where fast easterly jet winds ($\sim 30 \text{ m s}^{-1}$) transported the plume towards the Mediterranean Middle East and, later, to China. Less powerful, the next phase of the eruption injected SO₂ at lower altitudes but still the dispersion of the plume occurred over a large part of the African continent.

The eruption led to a $\sim 20 \text{ km}$ -long lava flow in less than ten days (see <http://earthobservatory.nasa.gov/>). It lasted about one month; remnants of volcanic SO₂ could still be

observed by the UV sensors on 17 July 2011. The comparison of satellite UV and TIR SO₂ images revealed inhomogeneous multi-layered SO₂ plumes dispersed over large distances, making the SO₂ fluxes calculation a complex problem to solve. Therefore we have used a more elaborated approach: the inverse modeling method (Sect. 3.4).

Note that Nabro is a difficult event to analyze as – unlike the Puyehue–Cordón Caulle (explosive) and the Nyamulagira (effusive) eruptions discussed above – it fundamentally was an effusive eruption releasing an exceptional gas jet that reached the tropopause prior to strong lava emission. As there is no evidence that this plume was ash laden as would be expected of a high altitude plume, Nabro remains an intriguing, atypical example in this respect. The transport mechanism of the initial Nabro eruption plume is also peculiar. Bourassa et al. (2012) have suggested deep convection associated with the Asian monsoon circulation to explain the strong impact of the eruption on the stratospheric aerosol loading. However, this mechanism is controversial after Vernier et al. (2013) and Fromm et al. (2013) provided satellite evidence for direct injection of the initial Nabro plume into the lower stratosphere.

4.3.1 Inversion settings

The inversion of the time-dependent SO₂ emission profiles is based on the maximum a posteriori solution described in Sect. 3.4 (Eq. 10). The emission grid cells are defined as: 16 layers of 1 km thickness from 2 to 18 km altitude and 64 6-hourly intervals for the period 13–28 June 2011, plus an additional profile to cope with the plume for the very first hours of the eruption (12 June – 20:30 UTC to 13 June – 00:00 UTC). The inversion consists in estimating the SO₂ masses that have been emitted in each of these grid cells. In line with Eq. (8), we define a state vector \mathbf{x} that gathers all the $n = 1040$ unknown emissions.

The FLEXPART simulations extended over 5 days after each release period and the results are given on a $1^\circ \times 1^\circ$ output grid. As mentioned in Sect. 3.4, concentrations are interpolated in space and time with the satellite measurements (see below), multiplied by the corresponding SO₂ averaging kernels (to allow direct comparisons with satellite measurements) and vertically integrated to provide columns. For the present study, we have applied a correction for SO₂ loss using a τ value different for each emission layer. From the decay observed in the total SO₂ mass after the end of the first major injection episode (not shown), we derive an e-folding lifetime of 5 days for the high altitude plumes at 15–18 km (Vernier et al., 2013; Fromm et al., 2013). The e-folding time parameterization as a function of altitude was estimated by interpolation between the values at surface level, taken as 2 days, and the one at 15–18 km (5 days). The value of the SO₂ e-folding time at the surface has been varied until the best match was found between the measurements and the simulations.

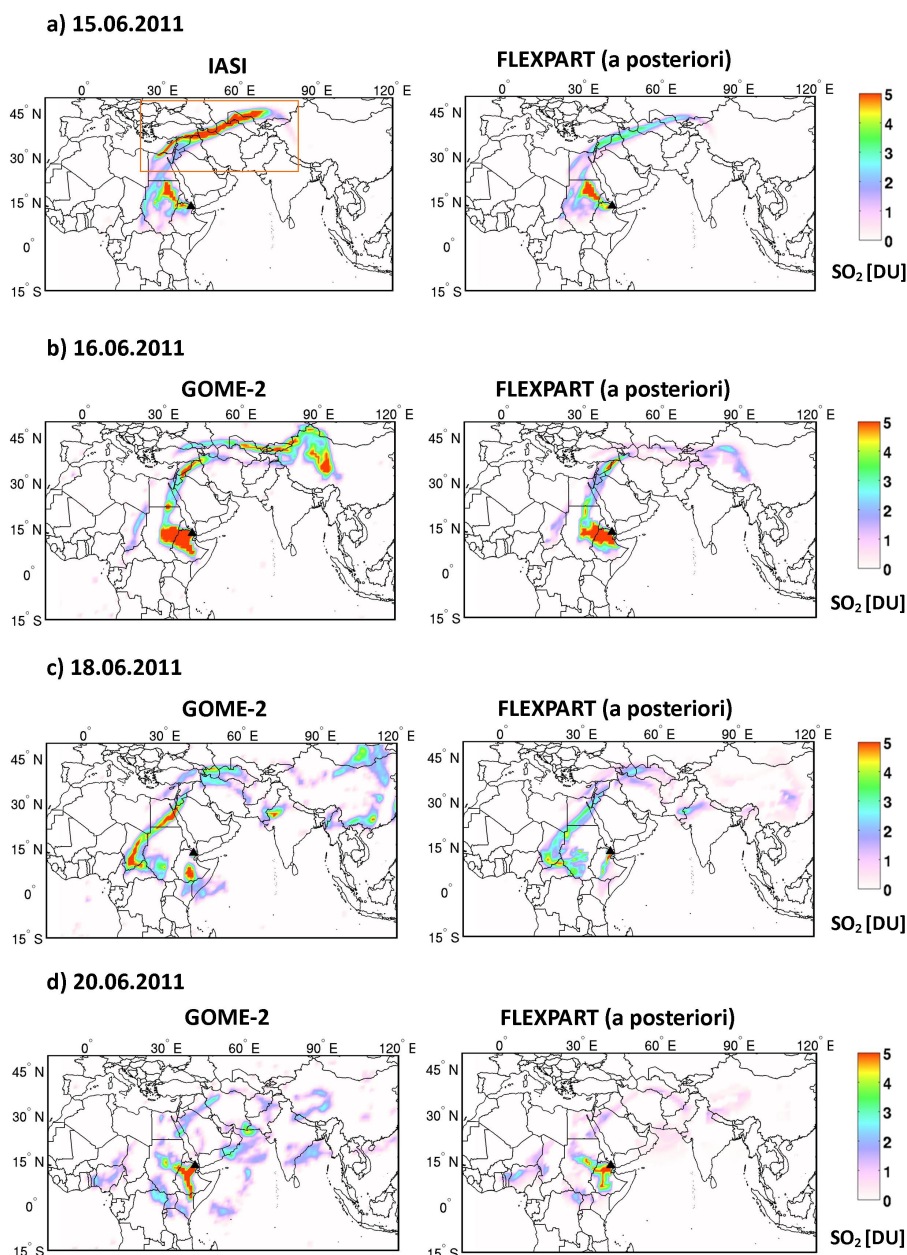


Fig. 10. SO₂ columns measured by IASI (morning overpass) and GOME-2 and simulated by FLEXPART using the a posteriori emissions from the inversion for 15 June 2011 (a), 16 June 2011 (b), 18 June 2011 (c) and 20 June 2011 (d). The measured columns are averaged over the 1° × 1° FLEXPART output grid. The simulated columns are (1) calculated from the SO₂ profiles weighted by the corresponding altitude-dependent measurement sensitivity functions (averaging kernels) and (2) interpolated at the time of observations. The Nabro volcano is marked by a black triangle. The orange box shows the SO₂ plume released in the first 15 h of the eruption.

The observations used to build the measurement vector y (Eq. 8) are the SO₂ columns measured by IASI (daytime and nighttime overpasses) and GOME-2 for the period between 13 June and 3 July 2011, evaluated on the output grid. Note however that the GOME-2 measurements for 14 June 2011 have not been considered in the analysis because the instrument was operating in its narrow swath mode on that day.

As a baseline, the calculation is made for SO₂ columns larger than 1 DU and assuming a plume height of 16 km for both sensors. Hence the averaging kernels by definition equal 1 at this altitude.

To solve the inversion problem (Eq. 10), several other variables need to be specified: the a priori state vector (x_a), the error covariance matrices of the a priori (S_a) and of the measurements (S_ϵ). For the a priori emissions, we

have estimated first-order SO₂ flux from the skewed shaped method (Sect. 3.3) applied to the global SO₂ total mass time series from GOME-2 (i.e., with a measurement sensitivity to SO₂ down to the surface). For each day, the inferred SO₂ mass was then distributed equally in each emission grid cell to form x_a . The a priori covariance matrix S_a has been chosen diagonal with values corresponding to 250 % + 2 kT errors on the a priori emissions, except in the layers below 6 km where a larger uncertainty was used (2000 % + 10 kT of the a priori emissions). Based on sensitivity tests, these settings were adopted to avoid an inversion over-constrained by the a priori values because of reduced sensitivity to SO₂ in the lower troposphere. For the observation error covariance matrix S_e , a diagonal matrix has been chosen and we assumed a conservative 50 % + 1 DU uncertainty on the measurements. Note that we tested the sensitivity of the inversion to the observation error covariance matrix S_e and it was found to be reasonably small.

4.3.2 Results

From inspection of the SO₂ column distributions, it appears that the GOME-2 and IASI data are quite similar, but the sequence of SO₂ images also shows differences that can be attributed (at least partly) to plumes of SO₂ at different altitudes. In principle, the inversion scheme exploits the instrumental complementarities to resolve the injection profiles in the altitude range extending from the surface to the lower stratosphere. At the beginning of the eruption, SO₂ is massively injected at high altitudes and the IASI retrieval is found to be optimal, owing to its large column applicability and 12 h revisiting time (as opposed to 24 h for GOME-2). Shortly after the first injection episode, SO₂ is more evenly distributed throughout the atmosphere, conditions for which GOME-2 provides information on the total atmospheric SO₂ column, including the contribution from the lower troposphere (not probed as efficiently by IASI). Note that after the first week of the eruption, the IASI SO₂ signal close to Nabro is quite small, indicating low altitude SO₂ plumes and hence most information on the emissions is brought by the GOME-2 data.

Before inspecting the inverted fluxes, let us first compare the SO₂ columns retrieved from GOME-2 or IASI and simulated by FLEXPART using the retrieved emissions. As an illustration, Fig. 10 shows daily SO₂ maps for 15, 16, 18 and 20 June 2011.

Generally the simulated SO₂ vertical columns agree fairly well with the observations. However, it should be noted that the strong SO₂ plume released at the beginning of the eruption, which then moves towards East Asia, is not well reproduced by the simulations. This plume was injected at high altitudes in the first 15 h of eruption. The reasons for this discrepancy will be investigated in Sect. 4.3.3. Nevertheless, the overall good agreement between the observed and modeled SO₂ columns for the other plumes suggests that it is neither

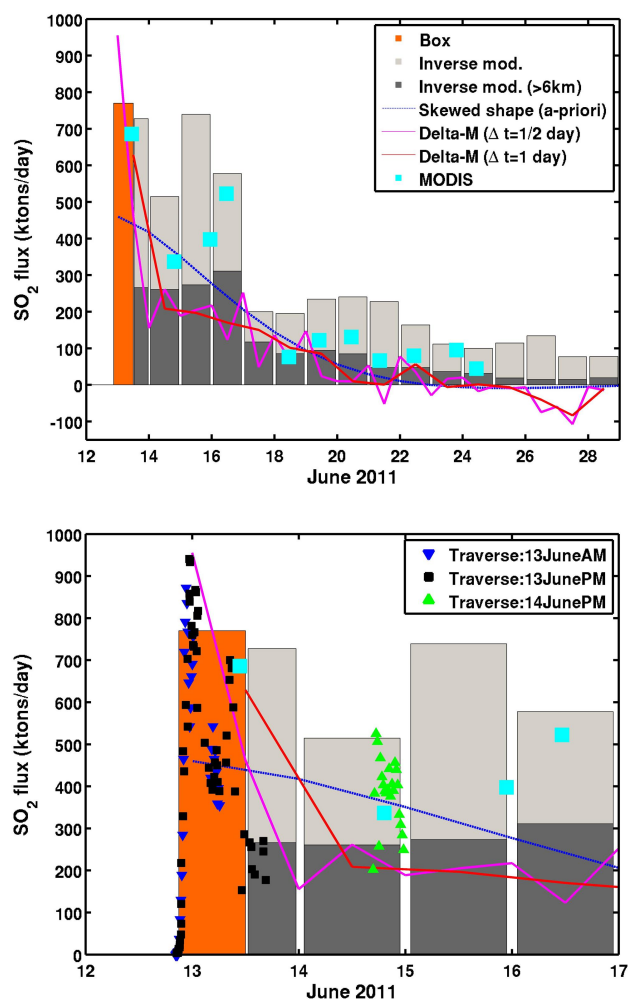


Fig. 11. Comparison of SO₂ flux estimates for the eruption of Nabro using different methods. Upper panel: vertically integrated a posteriori emissions from the inversion combining IASI and GOME-2 data (dark grey bars: > 6 km; light + dark grey bars: total flux), flux estimate of the early plume using the box method applied to IASI (orange bar; see text and Fig. 10a), results of the skewed-shape method applied to GOME-2 data and used as a priori in the inversion (blue dotted line; z : 16 km), results of the delta-M method applied to IASI data (magenta and red lines for half-daily and daily mass estimates; z : 16 km) and results of the traverse method applied to MODIS (cyan squares). Lower panel: same as upper panel (but with a focus on the first four days of eruption) with flux results of the traverse method for three IASI images at the beginning of the eruption.

a serious nor a general problem. From Fig. 10, one can also see that not all plume maxima are well captured. This points to limitations in the approach used (in terms of spatial and time resolution) to capture the complexity and details of the emissions (Eckhardt et al., 2008).

The flux estimates are displayed in Fig. 11 (upper panel), where the a posteriori emissions have been integrated

vertically (from 2 to 18 km: sum of dark and light grey bars) and in time to yield daily SO₂ fluxes. As an illustration, Fig. 11 (upper panel) also shows the a posteriori fluxes for the 6–18 km altitude range (dark grey bars), the a priori fluxes (Sect. 4.3.1) and the results from other methods (see discussion below).

From Fig. 11, several remarks can be made.

1. It is important to mention that, although it helps minimizing the cost function J (Eq. 9), working with an emission time step of 6 h may also be problematic in some cases, because the satellite revisit time is 12 h at best. This is particularly true for plumes at low altitude where the wind speed is modest and the SO₂ loss processes are fast. Consequently, the variability of the inverted emissions should not be strictly interpreted, as two consecutive values are likely too correlated. Therefore, we have recalculated the SO₂ emissions on a daily basis (more stable in time).
2. Accurate simulation of the transport of SO₂ was challenging for the plume released in the first 15 h of eruption. The corresponding inversion results are uncertain (because of misfit effects), and to estimate the SO₂ flux for the early injection we have applied the box method (see Sect. 3.1). Based on the FLEXPART simulations, it was possible to identify what part of the observed plume was released during the first 15 h (the plume in the orange box in Fig. 10a). By using moving boxes for three consecutive IASI overpasses (from 14 June a.m. to 15 June a.m. 2011), we calculated an averaged total SO₂ mass released in the first 15 h and hence an SO₂ flux (Fig. 11 – orange bar) by applying a factor accounting for the SO₂ decay since the release.
3. In contrast to the fluxes from the skewed shape method (a priori fluxes), which are generally too low, the fluxes from the inversion modeling method (Fig. 11, upper panel) clearly reveal two volcanic regimes. In the first four days of eruption, large values of the fluxes (500–950 kT day⁻¹) are observed and SO₂ is vertically distributed throughout the entire atmosphere (2–18 km range), except probably for the very early plume where heights are mostly in the 15–18 km range. On 17 June 2011 substantially lower fluxes (80–250 kT day⁻¹) are observed and SO₂ plumes are mostly below 6 km. This second phase of the eruption is mostly effusive (see Sect. 1.1). It should be noted that the retrieved emissions in the lower troposphere for 13–14 June 2011 have higher uncertainties. This is essentially because the GOME-2 instrument was operating in its narrow swath mode on 14 June 2011 and no useful data was available on that day.
4. The delta-M method (Sect. 3.3) was applied to IASI columns (assuming a plume height of 16 km). One can

see that the results (displayed in Fig. 11, magenta and red lines) capture nicely the large SO₂ flux at the start of the eruption and then agree well with the fluxes for the layers in the 6–18 km altitude range. After 20 June, the IASI signal becomes small and the delta-M method returns negative values, because of errors in the IASI retrievals and assumed SO₂ e-folding time. For the first two days of eruptions (13–14 June 2011), it was possible to apply the traverse method (Sect. 3.2) to portions of plumes measured by IASI. The results are shown in the lower panel in Fig. 11, which is a zoom on the first four days of the eruption. The results agree fairly well with the flux estimates in the 6–18 km range (where IASI has a good sensitivity to SO₂). Moreover, the results from the traverse method enable us to consolidate the flux results at the very beginning of the eruption (early plume).

5. The SO₂ fluxes have also been estimated by applying the traverse method (Sect. 3.2) to MODIS measurements. The pressure, temperature and humidity profiles, needed for the SO₂ retrieval computation (see Sect. 2.4), derive from ECMWF data considering a 3° × 3° grid around Nabro. The plume axes direction and the wind speed have been extracted from the ECMWF profiles at the plume altitude. By exploiting the high spatial resolution of MODIS, the mean SO₂ flux has been estimated in the region lying in the first 300 km from the volcanic vent (also to avoid the depletion of SO₂ since its release). Note that the MODIS TIR images for 13 and 16 June show a strong absorption due to condensed water vapor. Such particles absorb in the entire TIR spectral range and this leads to an overestimation of the SO₂ total amount. To account for this effect a correction for the water vapor content has been applied. The procedure is based on the same approach described by Corradini et al. (2009) to correct for ash but adapted here for water vapor optical properties (as input of the radiative transfer code). As can be seen, the MODIS fluxes do agree reasonably well with the estimates presented above.
6. From Fig. 11, we estimate the total SO₂ mass released by Nabro during the first fifteen days of eruption to be of about 4.5 MT.
7. We conducted test retrievals to estimate the uncertainty on the fluxes displayed in Fig. 11. A reasonable value of the total error is of about 50 %.

4.3.3 Discussion

Transport of the early plume

We now explore the reasons for the differences between the observations and the FLEXPART simulated patterns. As mentioned above, the large SO₂ plume at the beginning of

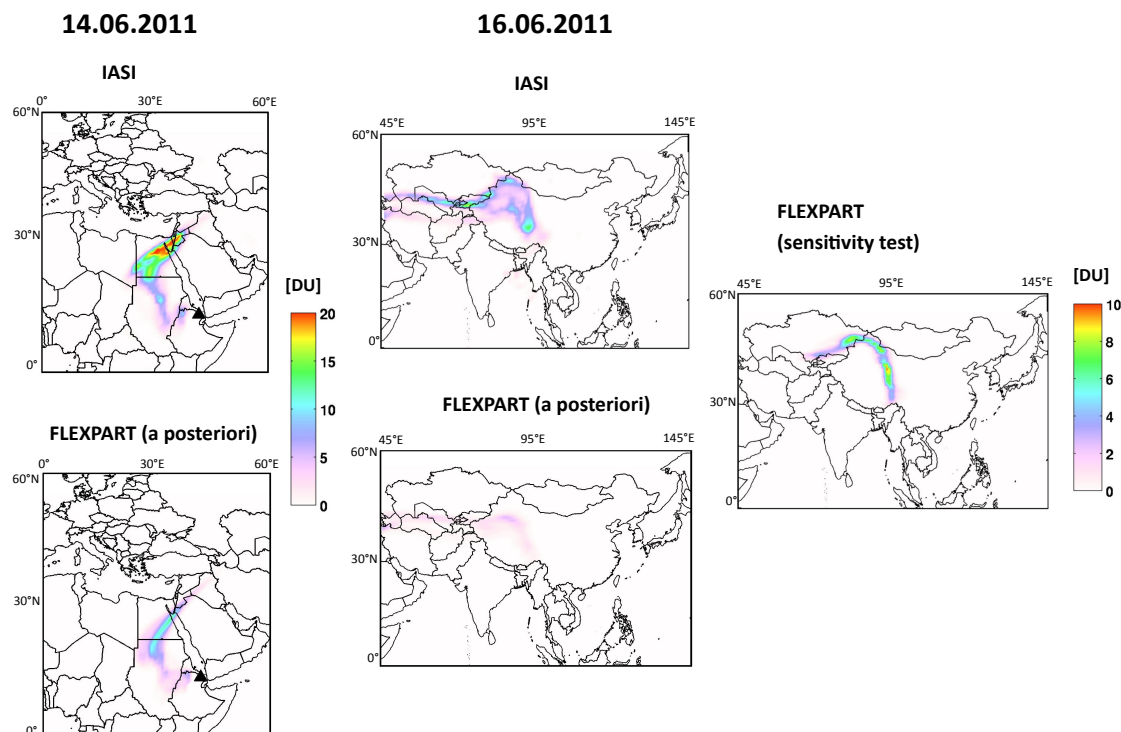


Fig. 12. Comparison of SO₂ columns measured by IASI (morning overpass) and simulated by FLEXPART using the a posteriori emissions from the inversion for 14 (left) and 16 June 2011 (right). Also shown is a map of the SO₂ columns simulated by FLEXPART for 16 June 2011 using (as a sensitivity test) the IASI observations on 14 June 2011 as source elements (see text).

the eruption was poorly constrained by the inversion. This leads to an underestimation of the modeled SO₂ columns as illustrated in Figs. 10 and 12 (left and center plots).

There are several possible explanations for this feature (see discussion by Eckhardt et al., 2008). One possibility is that errors on the high altitude wind fields propagate with time making the transport simulation uncertain. To test this hypothesis, we have run FLEXPART using different wind fields; namely the National Centers for Environmental Prediction (NCEP) Global Forecast System (GFS) analyses with 1° × 1° resolution. It emerged from sensitivity tests that the simulated dispersion patterns were close to the original data. Another option to explain the discrepancy between the observations and the simulations is to consider an effect from the eruption itself. It could be that for the early phase of the eruption the assumption of a passively advected plume is not fulfilled anymore. Discrepancies may arise from radiative heating of the plume (e.g., leading to self-lofting of the plume; Eckhardt et al., 2008), gas trapping in ice or because of water vapor conversion to ice (Textor et al., 2003). To test this assumption, we have made a sensitivity test illustrated in Fig. 12. Using the a posteriori emissions, one can see that the simulated columns strongly deviate from the corresponding IASI SO₂ columns for 14 and 16 June 2011. If the observed

discrepancies are due to the action of the plume, it is reasonable to assume that several hours after the start of the eruption (12 June 2011 around 20:30 UTC) the physical and chemical processes that occurred in-situ have stopped, so that the plume can be considered as passive again. As a test, we have run a FLEXPART simulation starting on 14 June 2011 (i.e., more than 30 h after the start of the eruption) using the IASI SO₂ observations as emission cells, the source strengths being modulated by the corresponding measured SO₂ masses. Only the data with latitudes above 20° N have been kept and the simulations assumed a uniform SO₂ profile between 15 and 18 km (Vernier et al., 2013; Fromm et al., 2013). The results are shown in Fig. 12 (right plot) on 16 June 2011 at the time of IASI measurements (morning overpass). One can see that, compared to the modeled columns using the a posteriori emissions, the simulated columns are much closer to the IASI observations. The fact that the pattern extending from West Mongolia to central China could be reasonably well reproduced indicates that the wind data are compatible with the real dispersion of the plume. This suggests that the differences between the observations and the original FLEXPART simulations are due – at least partly – to the action of the plume released in the first hours of the eruption.

More work is needed to study the transport of the Nabro SO₂ plume and to ascertain the importance of the Asian monsoon circulation in the uplift of this plume (Bourassa et al., 2012).

Intercomparison of GOME-2 and IASI

As shown in Sect. 4.3.2, the inversion modeling method applied to the eruption of Nabro provides good results. However, the technique implicitly assumes that the SO₂ columns from GOME-2 and IASI are compatible with each other, in the sense that differences in the column amount are only due to deviations from the actual plume height (Fig. 1). The aim of this section is to investigate whether this assumption is fulfilled.

In a first step, we used the information on the SO₂ plume heights provided by the a posteriori FLEXPART simulations. For this purpose, we calculate, at each time step and for each grid point, the height of the SO₂ center of mass using the optimized (non-zero) SO₂ concentration profiles. The retrieved SO₂ heights are then used to investigate the consistency of the SO₂ column datasets from GOME-2 and IASI. However, this analysis is only possible if the plume altitudes returned by the simulations are reliable enough. Therefore, we have made comparisons with independent altitude estimations obtained with collocated GOME-2 observations, to assess the accuracy of the modeled plumes heights. Here the effective height of the SO₂ plume is retrieved from the GOME-2 backscattered radiance measurements using a direct fitting approach (van Gent et al., 2013; Yang et al., 2010; Nowlan et al., 2011). An example of comparison in a region close to Nabro for 16 June 2011 is displayed in Fig. 13.

From the GOME-2 and FLEXPART SO₂ plume height images in Fig. 13, we found that both data are able to capture a complex situation with two SO₂ plumes at different altitudes: a plume at 3–5 km transported to the south and another plume at 8–12 km drifting westward of the volcano. More quantitatively, the modeled and observed plume heights are found to be in good agreement, with differences in the 1–2 km range. Although it does not constitute a proper validation, the comparison of Fig. 13 tends to consolidate the inverted emissions and related plume height estimations.

Next we compare the GOME-2 and IASI SO₂ data by accounting for the effect of altitude. This was achieved by interpolating the averaging kernels (estimated for each GOME-2 and IASI measurement; Fig. 1) at the corresponding FLEXPART SO₂ plume heights. The calculation supplies conversion factors that are then applied to the respective vertical columns from both sensors. For the conditions where no information on the altitude was available, we took the plume height value from the closest grid point to the corresponding measurement.

Figure 14 shows time series of SO₂ masses for the first fifteen days of the eruption of Nabro using the recalculated GOME-2 and IASI vertical columns.

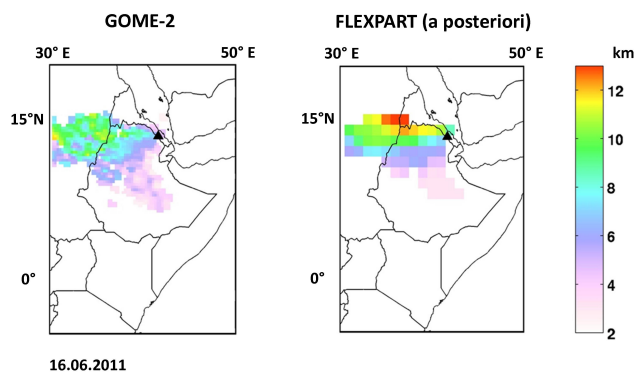


Fig. 13. Comparison of SO₂ plume height retrieved from GOME-2 spectra using a direct fitting approach (left) and simulated by FLEXPART using the a posteriori emissions (right) for 16 June 2011 in the vicinity of Nabro.

The upper panel in Fig. 14 shows the GOME-2 total SO₂ masses as a function of time, for different selection criteria on the data. The black curve sums the SO₂ amount for all plume height scenarios from the surface to lower stratospheric layers, while the red curve only considers the data with SO₂ plume heights above 6 km. One can see that the agreement between GOME-2 (red curve) and IASI (blue curve) SO₂ masses is remarkable when the comparison is restricted to plumes in the altitude range where IASI is sensitive (> 6 km). The differences between IASI and GOME-2 masses are most of the time lower than 25%. To rule out possible compensation effects, we have also compared the GOME-2 and IASI time series of SO₂ masses separately for different altitude ranges: 6–9, 9–12 and above 12 km. The results are displayed in Fig. 14 (lower panel). Again, the GOME-2 and IASI SO₂ masses data are in excellent agreement.

These results strengthen the inversion modeling approach presented in Sects. 4.3.1 and 4.3.2 and also confirm that the largest errors on the UV and TIR SO₂ columns is the error made by assuming a wrong SO₂ altitude.

One can argue that for individual scenes the discrepancies between GOME-2 and IASI can be much higher than what has been presented here, because of saturation issues. Indeed, the GOME-2 DOAS retrieval tends to underestimate the SO₂ amount for columns larger than 50–100 DU, whereas the IASI algorithm is designed to cope with nonlinear effects due to a large SO₂ amount (Clarisse et al., 2012). However, from the inspection of the SO₂ columns (measured by IASI), we believe this translates to small differences for the time series shown in Fig. 14 because this saturation effect only affects a small number of pixels, those with the highest SO₂ concentrations (at the beginning of the time series). Note that the plume may also contain large amounts of aerosols (notably ice) and gases (e.g., water vapor) all absorbing or scattering the photons differently depending on the wavelength. This can also cause differences between the UV and TIR SO₂ data (again mostly at the beginning of the time series),

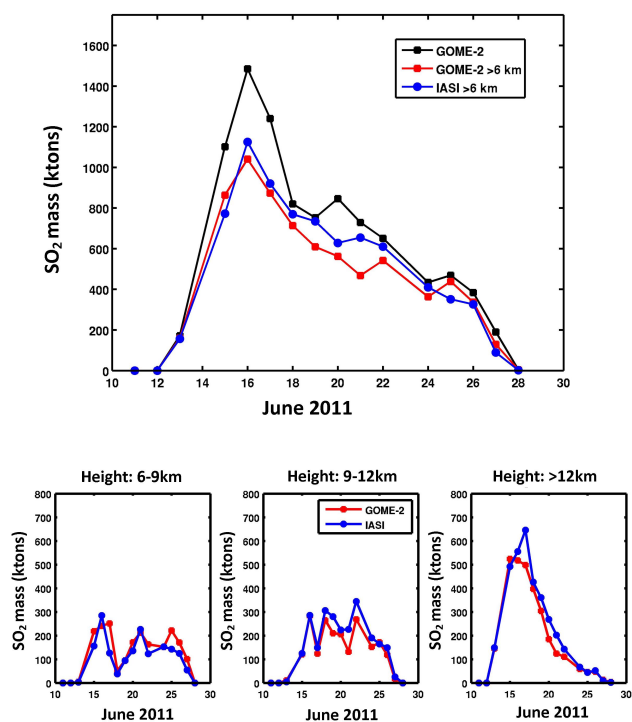


Fig. 14. Comparison of SO₂ masses measured by GOME-2 and IASI (morning overpasses) and constrained by the height estimates from the FLEXPART simulations, for the first 15 days of eruption of Nabro. Upper panel: total mass time series evaluated for all SO₂ plumes (GOME-2, black line) and for the plumes in the altitude range (> 6 km) where IASI is sensitive (GOME-2, red line; IASI, blue line). Lower panel: time series of SO₂ mass measured with GOME-2 (red line) and IASI (blue line) for SO₂ plumes in different altitude ranges (from left to right): 6–9, 9–12 and above 12 km.

depending on the local vertical distributions of aerosols and gases. Whether these differences are positive or negative is difficult to ascertain – a fortuitous compensation is not to be excluded. However, a comprehensive intercomparison study dealing with these issues is beyond the scope of this paper.

5 Conclusions

We have presented four methods for retrieving volcanic SO₂ fluxes, using SO₂ vertical column measurements from satellite nadir-looking instruments. These techniques rely on the mass conservation principle and, hence, a sequence of satellite SO₂ images carries information on the emission chronology. Generally the determination of SO₂ fluxes requires additional information on the transport and loss of SO₂ since its release.

The simplest methods we have used are applicable to eruptions with single injection height and are best suited for SO₂ plumes with simple geometry. For more complex conditions – such as those encountered during long-lasting eruptions characterized by multi-layered SO₂ plumes, e.g., – a more

sophisticated technique has been used that combines satellite data and the FLEXPART dispersion model (Eckhardt et al., 2008). The methods have been applied to data from UV-visible (GOME-2 and OMI) and thermal infrared (IASI and MODIS) sounders. The three eruptions discussed in this work are very different: Puyehue-Cordón Caulle belongs to the explosive regime, whilst that of Nyamulagira belongs to the effusive regime. We have seen that the third event, that of Nabro (Eritrea), is intriguing as it fundamentally was an effusive one which released – during its first phases – an exceptional gas jet reaching tropopause levels.

Although each method has advantages and weaknesses, overall, the flux results from the different methods are consistent and often complementary. We have shown that the satellite measurements are able to provide SO₂ fluxes with a sampling of a day or less (~ 2 h in the best case), and with a total error below 50 %. A summary of the techniques and its main features is given in Table 1.

The analysis also enables us to compare properly the SO₂ data from the different sensors used and, in general, the time series of SO₂ flux/mass agree fairly well. More specifically, we have studied the complementarity of the (collocated) GOME-2 and IASI data. The SO₂ mass time series from GOME-2 and IASI are in excellent agreement when comparison is restricted to the altitude range where both instruments are sensitive to SO₂: as this call for the plume altitude to be the key-factor of the satellite SO₂ data accuracy; further studies on space-borne SO₂ fluxes are expected to benefit from the advent of sensitive algorithms retrieving simultaneously the plume height and the vertical column of SO₂ (Yang et al., 2010; Nowlan et al., 2011; van Gent et al., 2013; Carboni et al., 2012).

Flux estimates will also be improved and better constrained by using (1) sensors with improved noise level, coverage and spatial resolution (e.g., forthcoming TROPOMI instrument onboard the Sentinel-5 Precursor mission; Veeffkind et al., 2012), as well as revisiting time; (2) complementary data from GOME-2 and IASI on MetOp-A and MetOp-B platforms (tandem operations); and (3) a consolidated library of SO₂ e-folding times for different conditions (altitude, humidity, etc.) when it becomes available.

More generally, the methods described here are not limited to the retrieval of volcanic SO₂ emissions (point sources) and can also be applied to compute trace gas fluxes, for example, from fire plumes (Yurganov et al., 2011) or during events of long-range transport of pollutants.

Table 1. Overview of the methods used in this study to derive SO₂ fluxes.

	Box method	Traverse method	Delta-M method	Inverse modeling
Used for	Young plumes, high spatial resolution	Young plumes, high spatial resolution	Long lived, high altitude plumes	All plumes, but mostly applied for long lived
Wind field data needed	yes	yes	no	yes
Constant wind velocity needed	yes	no	n/a	no
Constant wind direction needed	yes	yes	n/a	no
Multiple overpasses needed	no	no	yes	no
SO ₂ plume height needed	yes	yes	yes	no
SO ₂ lifetime knowledge	Assumed	Assumed/Negligible if taken close to the volcano	Calculated	Calculated/Online estimation
Resolution of lifetime correction	High resolution	High resolution	Resolution of the overpass	High resolution
Flux Time resolution	One flux per overpass	High/User defined/ Pixel constrained	One flux per overpass	High/User defined (depending on the injection profile)
Best For	First evaluation	Near real time application, comparison with ground-based data	Quick conversion from total mass time series.	A posteriori analysis, plumes with complex vertical structure
Limitations	Relies heavily on wind speed, SO ₂ lifetime, plume coverage	Relies heavily on wind speed	Relies heavily on SO ₂ lifetime, complete plume coverage	Time consuming, strongly dependent on accurate wind field data, possible misfits
References	Lopez et al. (2013)	Merucci et al. (2011)	Krueger et al. (1996)	Eckhardt et al. (2008)

Acknowledgements. This work was performed in the frame of the European Commission-GMES project EVOSS “European Volcano Observatory Space Services” (<http://www.evoss.eu>), contract no. 242535 of the Research Executive Agency, run 2010–2013.

We also acknowledge financial support from the European Space Agency Support to Aviation Control Service (SACS+) project and the EUMETSAT O3M-SAF Continuous Development and Operation Projects (CDOP-1 and -2).

IASI was developed and built under the responsibility of CNES and flies onboard the MetOp satellite as part of the Eumetsat Polar system. The IASI L1 data are received through the EUMETCast near real time data distribution service. L. Clarisse and P.-F. Coheur are respectively Postdoctoral Researcher and Research Associate with F.R.S.-FNRS. C. Clerbaux is grateful to CNES for scientific collaboration and financial support. The research in Belgium was funded by the BELSPO and ESA (Prodex arrangements). We acknowledge support from the “Actions de Recherche Concertées” (Communauté Française de Belgique).

Edited by: A. Richter

References

- Afe, O. T., Richter, A., Sierk, B., Wittrock, F., and Burrows, J. P.: BrO emissions from volcanoes: a survey using GOME and SCIAMACHY measurements, *Geophys. Res. Lett.*, 31, L24113, doi:10.1029/2004GL020994, 2004.
- Aiuppa, A., Giudice, G., Gurrieri, S., Liuzzo, M., Burton, M., Caltabiano, T., McGonigle, A. J. S., Salerno, G., Shinohara, H., and Valenza, M.: Total volatile flux from Mount Etna, *Geophys. Res. Lett.*, 35, L24302, doi:10.1029/2008GL035871, 2008.
- Aiuppa, A., Burton, M., Allard, P., Caltabiano, T., Giudice, G., Gurrieri, S., Liuzzo, M., and Salerno, G.: First observational evidence for the CO₂-driven origin of Stromboli’s major explosions, *Solid Earth*, 2, 135–142, doi:10.5194/se-2-135-2011, 2011.

- Barnes, W. L., Pagano, T. S., and Salomonson, V. V.: Prelaunch characteristics of the Moderate Resolution Imaging Spectroradiometer (MODIS) on EOS-AM1, *IEEE T. Geosci. Remote Sens.*, 36, 1088–1100, 1998.
- Beirle, S., Boersma, K. F., Platt, U., Lawrence, M. G., and Wagner, T.: Megacity Emissions and Lifetimes of Nitrogen Oxides Probed from Space, *Science*, 333, 1737–1739, doi:10.1126/science.1207824, 2011.
- Bluth, G. J. S. and Carn, S. A.: Exceptional sulfur degassing from Nyamuragira volcano, 1979–2005, *Int. J. Remote Sens.*, 29, 6667–6685, 2008.
- Boichu, M., Menut, L., Khvorostyanov, D., Clarisse, L., Clerbaux, C., Turquety, S., and Coheur, P.-F.: Inverting for volcanic SO₂ flux at high temporal resolution using spaceborne plume imagery and chemistry-transport modelling: the 2010 Eyjafjallajökull eruption case-study, *Atmos. Chem. Phys. Discuss.*, 13, 6553–6588, doi:10.5194/acpd-13-6553-2013, 2013.
- Bourassa, A. E., Robock, A., Randel, W. J., Deshler, T., Rieger, L. A., Nicholas, Lloyd, D., Llewellyn, E. J., and Degenstein, D. A.: Large Volcanic Aerosol Load in the Stratosphere Linked to Asian Monsoon Transport, *Science*, 337, 78–81, doi:10.1126/science.1219371, 2012.
- Brenot, H., Theys, N., van Gent, J., Van Roozendaal, M., van Geffen, J., Clarisse, L., van der A, R., Hurtmans, D., Coheur, P.-F., Clerbaux, C., Valks, P., Sievers, K., and Zehner, C.: Support to Aviation Control Service (SACS) in case of volcanic eruption, *Nat. Hazards*, in preparation, 2013.
- Breeding, R. J., Lodge Jr., J. P., Pate, J. B., Sheesley, D. C., Klonis, H. B., Fogle, B., Anderson, J. A., Englert, T. R., Haagenson, P. L., McBeth, R. B., Morris, A. L., Pogue, R., and Wartburg, A. F.: Background Trace Gas Concentrations in the Central United States, *J. Geophys. Res.*, 78, 7057–7064, doi:10.1029/JC078i030p07057, 1973.
- Caltabiano, T., Romano, R., and Budetta, G.: SO₂ flux measurements at Mount Etna (Sicily), *J. Geophys. Res.*, 99, 809–812, 1994.
- Campion, R.: Imaging measurements of volcanic SO₂ using space and ground based sensors, PhD thesis, ULB, available at: <http://theses.ulb.ac.be/ETD-db/collection/available/ULBetd-07222011-133156/>, 2011.
- Campion, R., Salerno, G. G., Coheur, P., Hurtmans, D., Clarisse, L., Kazahaya, K., Burton, M., Caltabiano, T., Clerbaux, C., and Bernard, A.: Measuring volcanic degassing of SO₂ in the lower troposphere with ASTER band ratios, *J. Volcanol. Geotherm. Res.*, 194, 42–54, 2010.
- Campion, R., Martinez-Cruz, M., Lecocq, T., Caudron, C., Pacheco, J., Pinardi, G., Hermans, C., Carn, S., and Bernard, A.: Space- and ground-based measurements of sulphur dioxide emissions from Turrialba Volcano (Costa Rica), *Bull. Volcanol.*, 74, 1757–1770, 2012.
- Carboni, E., Grainger, R., Walker, J., Dudhia, A., and Siddans, R.: A new scheme for sulphur dioxide retrieval from IASI measurements: application to the Eyjafjallajökull eruption of April and May 2010, *Atmos. Chem. Phys.*, 12, 11417–11434, doi:10.5194/acp-12-11417-2012, 2012.
- Carn, S. A. and Bluth, G. J. S.: Prodigious sulfur dioxide emissions from Nyamuragira volcano, D.R. Congo., *Geophys. Res. Lett.*, 30, 2211, doi:10.1029/2003GL018465, 2003.
- Carn, S. A., Krueger, A. J., Bluth, G. J. S., Schaefer, S. J., Krotkov, N. A., Watson, I. M., and Datta, S.: Volcanic eruption detection by the Total Ozone Mapping Spectrometer (TOMS) instruments: a 22-year record of sulphur dioxide and ash emissions, edited by: Oppenheimer, C., Pyle, D. M., and Barclay, J., *Volcanic Degassing*, Geological Society, London, Special Publications, 213, 177–202, 2003.
- Carn, S. A., Krueger, A. J., Arellano, S., Krotkov, N. A., and Yang, K.: Daily Monitoring of Ecuadorian volcanic degassing from space, *J. Volcanol. Geotherm. Res.*, 176, 141–150, 2008.
- Carn, S. A., Krotkov, N. A., Yang, K., and Krueger, A. J.: Measuring global volcanic degassing with the Ozone Monitoring Instrument (OMI), *Spec. Publ. Geol. Soc. Lon.*, 380, in press, 2013.
- Chin, M. and Jacob, D.: Anthropogenic and natural contributions to tropospheric sulfate: A global model analysis, *J. Geophys. Res.*, 101, 18691–18699, 1996.
- Chin, M., Rood, R. B., Lin, S.-J., Müller, J.-F., and Thompson, A. M.: Atmospheric sulfur cycle simulated in the global model GOCART: Model description and global properties, *J. Geophys. Res.*, 105, 24671–24687, doi:10.1029/2000JD900384, 2000.
- Clarisse, L., Coheur, P. F., Prata, A. J., Hurtmans, D., Razavi, A., Phulpin, T., Hadji-Lazaro, J., and Clerbaux, C.: Tracking and quantifying volcanic SO₂ with IASI, the September 2007 eruption at Jebel at Tair, *Atmos. Chem. Phys.*, 8, 7723–7734, doi:10.5194/acp-8-7723-2008, 2008.
- Clarisse, L., R'Honi, Y., Coheur, P.-F., Hurtmans, D., and Clerbaux, C.: Thermal infrared nadir observations of 24 atmospheric gases, *Geophys. Res. Lett.*, 38, L10802, doi:10.1029/2011GL047271, 2011.
- Clarisse, L., Hurtmans, D., Clerbaux, C., Hadji-Lazaro, J., Ngadi, Y., and Coheur, P.-F.: Retrieval of sulphur dioxide from the infrared atmospheric sounding interferometer (IASI), *Atmos. Meas. Tech.*, 5, 581–594, doi:10.5194/amt-5-581-2012, 2012.
- Clerbaux, C., Boynard, A., Clarisse, L., George, M., Hadji-Lazaro, J., Herbin, H., Hurtmans, D., Pommier, M., Razavi, A., Turquety, S., Wespes, C., and Coheur, P.-F.: Monitoring of atmospheric composition using the thermal infrared IASI/MetOp sounder, *Atmos. Chem. Phys.*, 9, 6041–6054, doi:10.5194/acp-9-6041-2009, 2009.
- Corradini, S., Merucci, L., and Prata, A. J.: Retrieval of SO₂ from thermal infrared satellite measurements: correction procedures for the effects of volcanic ash, *Atmos. Meas. Tech.*, 2, 177–191, doi:10.5194/amt-2-177-2009, 2009.
- Corradini, S., Merucci, L., Prata, A. J., and Piscini, A.: Volcanic ash and SO₂ in the 2008 Kasatochi eruption: Retrievals comparison from different IR satellite sensors, *J. Geophys. Res.*, 115, D00L21, doi:10.1029/2009JD013634, 2010.
- Daag, A., Tubianosa, B., Newhall, C., Tungol, N., Javier, D., Dolan, M., Perla, J., Reyes, D., Arboleda, R., Martinez, A., Reginaldo, T.: Monitoring Sulfur Dioxide Emission at Mount Pinatubo, edited by: Newhall, C. and Punongbayan, R., *Fire and Mud: Eruptions and Lahars of Mount Pinatubo*, Philippines, PHILVOLCS and USGS, 1996.
- Delmelle, P., Stix, J., Baxter, P., Garcia-Alvarez, J., and Barquero, J.: Atmospheric dispersion, environmental effects and potential health hazard associated with the low altitude gas plume of Masaya volcano, Nicaragua, *Bull. Volcanol.*, 64, 423–434, 2002.
- Eatough D. J., Caka F. M., and Farber R. J.: The conversion of SO₂ to sulfate in the atmosphere, *Isr. J. Chem.*, 34, 301–304, 1994.

- Eckhardt, S., Prata, A. J., Seibert, P., Stebel, K., and Stohl, A.: Estimation of the vertical profile of sulfur dioxide injection into the atmosphere by a volcanic eruption using satellite column measurements and inverse transport modeling, *Atmos. Chem. Phys.*, 8, 3881–3897, doi:10.5194/acp-8-3881-2008, 2008.
- Eisinger, M. and Burrows, J. P.: Tropospheric sulfur dioxide observed by the ERS-2 GOME instrument, *Geophys. Res. Lett.*, 25, 4177–4180, 1998.
- Ferrucci, F., Theys, N., Clarisse, L., Hirn, B., Laneve, G., Valks, P., van der A, R., Tait, S., Di Bartola, C., and Brenot, H.: Operational integration of spaceborne measurements of Lava discharge rates and Sulphur Dioxide concentrations for Global Volcano Monitoring, 28 pp., in: *Early Warning for Geological Disasters: Scientific concepts and current practice*, edited by: Wenzel, F. and Zschau, J., 350 pp.; Springer Science, Berlin-Heidelberg-New York; ISBN-13: 978-3642122323, in press, 2013.
- Fischer, T. P., Morrissey, M. M., Calvache, M. L., Gómez, D., Torres, R., Stix, J., and Williams, S. N.: Correlations between SO₂ flux and long-period seismicity at Galeras volcano, *Nature*, 368, 135–137, 1994.
- Fromm, M., Nedoluha, G., and Charvát, Z.: Comment on “Large Volcanic Aerosol Load in the Stratosphere Linked to Asian Monsoon Transport”, *Science*, 339, 647, doi:10.1126/science.1228605, 2013.
- Galle, B., Johansson, M., Rivera, C., Zhang, Y., Kihlman, M., Kern, C., Lehmann, T., Platt, U., Arellano, S., and Hidalgo, S.: NOVAC – A global network for volcano gas monitoring: Network layout and instrument description, *J. Geophys. Res.*, 115, D05304, doi:10.1029/2009JD011823, 2010.
- Graf, H.-F., Feichter, J., and Langmann, B.: Volcanic sulfur emissions: estimates of source strength and its contribution to the global sulfate distribution, *J. Geophys. Res.*, 102, 10727–10738, 1997.
- Halmer, M., Schminke, H.-U., and Graf, H.-F.: The annual volcanic gas input into the atmosphere, in particular into the stratosphere: a global data set for the past 100 years, *Journal of Volcanology and Geothermal Research*, 115, 511–528, 2002.
- Haywood, J. and Boucher, O.: Estimates of the direct and indirect radiative forcing due to tropospheric aerosols: a review, *Rev. Geophys.*, 38, 513–543, 2000.
- Hilton, F., Armante, R., August, T., Barnet, C., Bouchard, A., Camy-Peyret, C., Capelle, V., Clarisse, L., Clerbaux, C., Coheur, P.-F., Collard, A., Crevoisier, C., Dufour, G., Edwards, D., Faijan, F., Fourrié, N., Gambacorta, A., Goldberg, M., Guidard, V., Hurtmans, D., Illingworth, S., Jacquinet-Husson, N., Kerzenmacher, T., Klaes, D., Lavanant, L., Masiello, G., Matricardi, M., McNally, A., Newman, S., Pavelin, E., Payan, S., Péquignot, E., Peyridieu, S., Phulpin, T., Remedios, J., Schlüssel, P., Serio, C., Strow, L., Stubenrauch, C., Taylor, J., Tobin, D., Wolf, W., and Zhou, D.: Hyperspectral Earth Observation from IASI: four years of accomplishments, *B. Am. Meteor. Soc.*, 93, 347–370, 2012.
- Hughes, E. J., Sparling, L. C., Carn, S. A., and Krueger, A. J.: Using horizontal transport characteristics to infer an emission height time-series of volcanic SO₂, *J. Geophys. Res.*, 117, D18307, doi:10.1029/2012JD017957, 2012.
- Iguchi, M., Yakiwara, H., Tameguri, T., Hendrasto, M., and Hirabayashi, J.: Mechanism of explosive eruption revealed by geophysical observations at the Sakurajima, Suwanosejima and Semeru volcanoes, *J. Volcanol. Geotherm. Res.*, 178, 1–9, 2008.
- Inguaggiato, S., Vita, F., Rouwet, D., Bobrowski, N., Morici, S., and Sollami, A.: Geochemical evidence of the renewal of volcanic activity inferred from CO₂ soil and SO₂ plume fluxes: the 2007 Stromboli eruption (Italy), *Bull. Volc.*, 73, 443–456, doi:10.1007/s00445-010-0442-z, 2011.
- Jacob, D. J.: *Acid Rain*. In *Atmospheric Chemistry* (248–256), Princeton University Press, 1999.
- Kazahaya, K., Shinohara, H., Uto, K., Odai, M., Nakahori, Y., Mori, H., Iino, H., Miyashita, M., and Hirabayashi, J.: Gigantic SO₂ emission from Miyake-jima volcano, Japan, caused by caldera collapse, *Geology*, 32, 425–428, 2004.
- Kearney, C. S. and Watson, I. M.: Correcting satellite-based infrared sulfur dioxide retrievals for the presence of silicate ash, *J. Geophys. Res.*, 114, D22208, doi:10.1029/2008JD011407, 2009.
- Klüser, L., Erbertseder, T., and Meyer-Arne, J.: Observation of volcanic ash from Puyehue-Cordón Caulle with IASI, *Atmos. Meas. Tech.*, 6, 35–46, doi:10.5194/amt-6-35-2013, 2013.
- Kristiansen, N. I., Stohl, A., Prata, A. J., Richter, A., Eckhardt, S., Seibert, P., Hoffmann, A., Ritter, C., Bitar, L., Duck, T. J., and Stebel, K.: Remote sensing and inverse transport modeling of the Kasatochi eruption sulfur dioxide cloud, *J. Geophys. Res.*, 115, D00L16, doi:10.1029/2009JD013286, 2010.
- Krotkov, N. A., Carn, S. A., Krueger, A. J., Bhartia, P. K., Yang, K.: Band residual difference algorithm for retrieval of SO₂ from the Aura Ozone Monitoring Instrument (OMI), *IEEE Trans. Geosci. Remote Sensing, AURA Special Issue*, 44, 1259–1266, doi:10.1109/TGRS.2005.861932, 2006.
- Krueger, A. J.: Sighting of El Chichon sulfur dioxide clouds with the Nimbus 7 total ozone mapping spectrometer, *Science*, 220, 1377–1379, 1983.
- Krueger, A., Walter, L., Bhartia, P., Schnetzler, C., Krotkov, N., Sprod, I., and Bluth, G.: Volcanic sulfur dioxide measurements from the Total Ozone Mapping Spectrometer (TOMS) Instruments., *J. Geophys. Res.*, 100, 14057–14076, 1995.
- Krueger, A. J., Schnetzler, C. C., and Walter, L. S.: The December 1981 eruption of Nyamuragira volcano (Zaire), and the origin of the ‘mystery cloud’ of early 1982, *J. Geophys. Res.*, 101, 15191–15196, 1996.
- Lee, C., Martin, R. V., van Donkelaar, A., Lee, H., Dickerson, R. R., Hains, J. C., Krotkov, N., Richter, A., Vinnikov, K., and Schwab, J. J.: SO₂ emissions and lifetimes: Estimates from inverse modeling using in situ and global, space-based (SCIAMACHY and OMI) observations, *J. Geophys. Res.*, 116, D06304, doi:10.1029/2010JD014758, 2011.
- Le Guern, F.: Les débits de CO₂ et SO₂ volcaniques dans l’atmosphère, *Bull. Volc.*, 45, 197++202, doi:10.1007/BF02597730, 1982.
- Levelt, P. F., van den Oord, G. H. J., Dobber, M. R., Mälkki, A., Visser, H., de Vries, J., Stammes, P., Lundell, J., and Saari, H.: The Ozone Monitoring Instrument, *IEEE Trans. Geosci. Remote Sens.*, 44, 1093–1101, doi:10.1109/TGRS.2006.872333, 2006.
- Lopez, T. M., Carn, S. A., Werner, C., Kelly, P., Doukas, M., Pfeiffer, M., Fee, D., Webley, P., Cahill, C., and Schneider, D. J.: Evaluation of Redoubt volcano’s sulfur dioxide emissions by the Ozone Monitoring Instrument, *J. Volcanol. Geotherm. Res.*, doi:10.1016/j.jvolgeores.2012.03.002, in press, 2013.
- McGonigle, A. J. S., Delmelle, P., Oppenheimer, C., Tsanev, V. I., Delfosse, T., Williams-Jones, G., Horton, K., and Mather, T. A.: SO₂ depletion in tropospheric volcanic plumes, *Geophys. Res.*

- Lett., 31, L13201, doi:10.1029/2004GL019990, 2004.
- Merucci, L., Burton, M. R., Corradini, S., and Salerno, G. G.: Reconstruction of SO₂ flux emission chronology from space-based measurements, *J. Volcanol. Geotherm. Res.*, 206, 80–87, 2011.
- Munro, R., Eisinger, M., Anderson, C., Callies, J., Corpaccioli, E., Lang, R., Lefebvre, A., Livschitz, Y., and Albinana, A. P.: GOME-2 on MetOp, in: Proc. of The 2006 EUMETSAT Meteorological Satellite Conference, Helsinki, Finland, 12–16 June 2006, EUMETSAT p. 48, 2006.
- Nowlan, C. R., Liu, X., Chance, K., Cai, Z., Kurosu, T. P., Lee, C., and Martin, R. V.: Retrievals of sulfur dioxide from the Global Ozone Monitoring Experiment 2 (GOME-2) using an optimal estimation approach: Algorithm and initial validation, *J. Geophys. Res.*, 116, D18301, doi:10.1029/2011JD015808, 2011.
- Olmos, R., Barrancos, J., Rivera, C., Barahona, F., López, D. L., Henriquez, B., Hernández, A., Benitez, E., Hernández, P. A., Pérez, N. M., and Galle, B.: Anomalous emissions of SO₂ during the recent eruption of Santa Ana volcano, El Salvador, Central America, *Pure Appl. Geophys.*, 164, 2489–2506, doi:10.1007/s00024-007-0276-6, 2007.
- Oppenheimer, C., Francis, P., and Stix, J.: Depletion rates of sulphur dioxide in tropospheric volcanic plumes, *Geophys. Res. Lett.*, 25, 2671–2674, 1998.
- Oppenheimer, C., Kyle, P., Eisele, J. F., Crawford, G. J., Huey, D. G., Tanner, S. D., Kim, L. S., Mauldin, D. L., Blake, A. D., Beyersdorf, M. A., Buhr, M., and Davis, D.: Atmospheric chemistry of an Antarctic volcanic plume, *J. Geophys. Res.*, 115, D04303, doi:10.1029/2009JD011910, 2010.
- Oppenheimer, C., Scaillet, B., and Martin, S.: Sulfur degassing from volcanoes: source conditions, surveillance, plume chemistry and Earth system impacts, *Reviews in Mineralogy and Geochemistry*, 73, 363–421, doi:10.2138/rmg.2011.73.13, 2011.
- Platt, U. and Stutz, J.: *Differential Optical Absorption Spectroscopy (DOAS), Principle and Applications*, ISBN 3-340-21193-4, Springer Verlag, Heidelberg, 2008.
- Prata, A.: Observations of volcanic ash clouds in the 10–12 μm window using AVHRR/2 data, *Int. J. Remote Sens.*, 10, 751–761, 1989.
- Prata, A.: Volcanic information derived from satellite data, EUMETSAT volcanic ash and SO₂ pilot project report, April 18 2011, available on request via EUMETSAT, 2011.
- Prata, A. and Bernardo, C.: Retrieval of volcanic SO₂ column abundance from Atmospheric Infrared Sounder data, *J. Geophys. Res.*, 112, D20204, doi:10.1029/2006JD007955, 2007.
- Prata, A. and Grant, I.: Determination of mass loadings and plume heights of volcanic ash clouds from satellite data, CSIRO Marine and Atmospheric Research, CSIRO Atmospheric Research Technical Papers no. 48, 2001.
- Prata, A. and Kerkmann, J.: Simultaneous retrieval of volcanic ash and SO₂ using MSG-SEVIRI measurements, *Geophys. Res. Lett.*, 34, L05813, doi:10.1029/2006GL028691, 2007.
- Prata, A., Rose, W., Self, S., and O'Brien, D.: Global, long-term sulphur dioxide measurements from TOVS data: A new tool for studying explosive volcanism and climate, in: *Volcanism and the Earth's Atmosphere*, edited by: Robock, A. and Oppenheimer, C., vol. 139 of *Geophys. Monogr.*, 75–92, AGU, Washington, DC, 2003.
- Prata, A., Buongiorno, F., Eckhardt, S., Seibert, P., Stohl, A., and Richter, A.: Support to Aviation for Volcanic Ash Avoidance (SAVAA), Use of Remote Sensing Techniques for Monitoring Volcanoes and Seismogenic Areas. USEREST 2008, Second Workshop on, vol., no., 1–7, 11–14 November 2008, doi:10.1109/USEREST.2008.4740359, 2008.
- Pugnaghi, S., Gangale, G., Corradini, S., and Buongiorno, M. F.: Mt. Etna sulfur dioxide flux monitoring using ASTER-TIR data and atmospheric observations, *J. Volcanol. Geotherm. Res.*, 152, 74–90, 2006.
- Rampino, M. R., Self, S., and Stothers, R. B.: Volcanic Winters, *Annu. Rev. Earth a Planet. Sci.*, 16, 73–99, 1988.
- Read, W. G., Froidevaux, L., and Waters, J. W.: Microwave limb sounder measurement of stratospheric SO₂ from the Mt. Pinatubo Volcano, *Geophys. Res. Lett.*, 20, 1299–1302, doi:10.1029/93GL00831, 1993.
- Realmuto, V., Abrams, M., Buongiorno, M., and Pieri, D.: The use of multispectral thermal infrared image data to estimate the sulfur dioxide flux from volcanoes: A case study from Mount Etna, Sicily, 29 July 1986, *J. Geophys. Res.*, 99, 481–488, 1994.
- Realmuto, V. J., Sutton, A. J., and Elias, T.: Multispectral thermal infrared mapping of sulfur dioxide plumes: A case study from the East Rift Zone of Kilauea Volcano, Hawaii, *J. Geophys. Res.*, 102, 15057–15072, 1997.
- Rix, M., Valks, P., Hao, N., van Geffen, J., Clerbaux, C., Clarisse, L., Coheur, P.-F., Loyola R, D. G., Erbetseder, T., Zimmer, W., and Emmadi, S.: Satellite Monitoring of Volcanic Sulfur Dioxide Emissions for Early Warning of Volcanic Hazards, *IEEE Journal of Selected Topics in Applied Earth Observations and Remote Sensing*, 2, 206, doi:10.1109/JSTARS.2009.2031120, 2009.
- Rix, M., Valks, P., Hao, N., Loyola, D. G., Schlager, H., Huntrieser, H. H., Flemming, J., Koehler, U., Schumann, U., and Inness, A.: Volcanic SO₂, BrO and plume height estimations using GOME-2 satellite measurements during the eruption of Eyjafjallajökull in May 2010, *J. Geophys. Res.*, 117, D00U19, doi:10.1029/2011JD016718, 2012.
- Robock, A.: Volcanic eruptions and climate, *Rev. Geophys.*, 38, 191–219, 2000.
- Rodgers, C. D.: *Inverse Methods for Atmospheric Sounding, Theory and Practice*, World Scientific Publishing, Singapore-New Jersey-London-Hong Kong, 2000.
- Rodriguez, L. A., Watson, I. M., Edmonds, M., Ryan, G., Hards, V. L., Oppenheimer, C., and Bluth, G. J. S.: SO₂ loss rates in the plume emitted by Soufrière Hills volcano, Montserrat, *J. Volcanol. Geotherm. Res.*, 173, 135–147, 2008.
- Rose, W. I., Delene, D. J., Schnelder, D. J., Bluth, G. J. S., Krueger, A. J., Sprod, I., McKee, C., Davies, H. L., and Ernst, G. G. J.: Ice in the 1994 Rabaul Eruption Cloud -Implications for Volcano Hazard and Atmospheric Effects, *Nature*, 375, 477–479, 1995.
- Rothman, L., Gordon, I., Barbe, A., Benner, D., Bernath, P., Birk, M., Boudon, V., Brown, L., Campargue, A., Champion, J.-P., Chance, K., Coudert, L., Dana, V., Devi, V., Fally, S., Flaud, J.-M., Gamache, R., Goldman, A., Jacquemart, D., Kleiner, I., Lacombe, N., Lafferty, W., Mandin, J.-Y., Massie, S., Mikhailenko, S., Miller, C., Moazzen-Ahmadi, N., Naumenko, O., Nikitin, A., Orphal, J., Perevalov, V., Perrin, A., Predoi-Cross, A., Rinsland, C., Rotger, M., Šimečková, M., Smith, M., Sung, K., Tashkun, S., Tennyson, J., Toth, R., Vandaele, A., and Auwera, J. V.: The HITRAN 2008 molecular spectroscopic database, *J. Quant. Spectrosc. Ra.*, 110, 533–572, doi:10.1016/j.jqsrt.2009.02.013, 2009.

- Shinohara, H.: Excess degassing from volcanoes and its role on eruptive and intrusive activity, *Rev. Geophys.*, 46, RG4005, doi:10.1029/2007RG000244, 2008.
- Smithsonian Institution, Puyehue-CordonCaulle, *Bull. Global Volcanism Network*, 37, 03, 2012.
- Solomon, S., Daniel, J. S., Neely, R. R., Vernier, J. P., Dutton, E. G., and Thomason, L. W.: The persistently Variable "Background" Stratospheric Aerosol Layer and Global Climate Change, *Science*, 333, 866–870, doi:10.1126/science.1206027, 2011.
- Stix, J., Williams-Jones, G. and Hickson, C.: Applying the COSPEC at Active Volcanoes, in: *The COSPEC Cookbook: Making SO₂ Measurements at Active Volcanoes*, edited by: Williams-Jones, G., Stix, J., Hickson, C., IAVCEI, *Methods in Volcanology*, 1, 121–167, 2008.
- Stohl, A., Hittenberger, M., and Wotawa, G.: Validation of the Lagrangian particle dispersion model FLEXPART against large scale tracer experiment data, *Atmos. Environ.*, 32, 4245–4264, 1998.
- Stohl, A., Forster, C., Frank, A., Seibert, P., and Wotawa, G.: Technical note: The Lagrangian particle dispersion model FLEXPART version 6.2, *Atmos. Chem. Phys.*, 5, 2461–2474, doi:10.5194/acp-5-2461-2005, 2005.
- Stohl, A., Prata, A. J., Eckhardt, S., Clarisse, L., Durant, A., Henne, S., Kristiansen, N. I., Minikin, A., Schumann, U., Seibert, P., Stebel, K., Thomas, H. E., Thorsteinsson, T., Tørseth, K., and Weinzierl, B.: Determination of time- and height-resolved volcanic ash emissions and their use for quantitative ash dispersion modeling: the 2010 Eyjafjallajökull eruption, *Atmos. Chem. Phys.*, 11, 4333–4351, doi:10.5194/acp-11-4333-2011, 2011.
- Stoiber, R. E., Malinconico, L. L., and Williams, S. N.: Use of the Correlation Spectrometer at Volcanoes, edited by: Tazieff, H. and Sabroux, J. C., *Forecasting volcanic events*, Elsevier, 425–444, 1983.
- Sutton, A. J., Elias, T., and Kauahikaua J.: Lava-Effusion Rates for the Pu'u 'Ō'o-Kūpaianaha Eruption Derived from SO₂ Emissions and Very Low Frequency (VLF) Measurements, in: *The Pu'u 'Ō'o-Kūpaianaha Eruption of Kīlauea Volcano, Hawai'i: The First 20 Years*, edited by: Heliker, C., Swanson, D. A., and Takahashi, T. J., US Geological Survey Professional Paper 1676, 2003.
- Symonds, R. B., Rose, W. I., Bluth, G. J. S., and Gerlach, T. M.: Volcanic gas studies: methods, results and applications, in: *Volatiles in Magmas*, edited by: Carroll, M. R. and Hollaway, J. R., Mineralogical Society of America Reviews in Mineralogy, 30, 1–66, 1994.
- Symonds, R. B., Gerlach, T. M., and Reed, M. H.: Magmatic gas scrubbing: implications for volcano monitoring, *J. Volcanol. Geotherm. Res.*, 108, 303–341, 2001.
- Textor, C., Graf, H.-F., Herzog, M., and Oberhuber, J. M.: Injection of gases into the stratosphere by explosive volcanic eruptions, *J. Geophys. Res.*, 108, 4606, doi:10.1029/2002JD002987, 2003.
- Thomas, H. and Watson, I.: Observations of volcanic emissions from space: current and future perspectives, *Nat. Hazards*, 54, 323–354, 2010.
- Urai, M.: Sulfur dioxide flux estimation from volcanoes using Advanced Spaceborne Thermal Emission and Reflection Radiometer: A case study of Miyakejima volcano, Japan, *J. Volcanol. Geotherm. Res.*, 134, 1–13, 2004.
- van Geffen, J., Van Roozendaal, M., Rix, M., and Valks, P.: Initial validation of GOME-2 GDP 4.2 SO₂ total columns (OTO/SO₂) – ORR B, O3MSAF validation report, TN IASB-GOME2-O3MSAF-SO2-01.1, 2008.
- van Gent, J., Spurr, R., Theys, N., Lerot, C., Brenot, H., and Van Roozendaal, M.: SO₂ plume height retrieval from GOME-2 backscattered radiance measurements, in preparation, 2013.
- Veefkind, J. P., Aben, I., McMullan, K., Förster, H., de Vries, J., Otter, G., Claas, J., Eskes, H. J., de Haan, J. F., Kleipool, Q., van Weele, M., Hasekamp, O., Hoogeveen, R., Landgraf, J., Snel, R., Tol, P., Ingmann, P., Voors, R., Kruizinga, B., Vink, R., Visser, H., and Levelt, P. F.: TROPOMI on the ESA Sentinel-5 Precursor: A GMES mission for global observations of the atmospheric composition for climate, air quality and ozone layer applications, *Remote Sens. Environ.*, 120, 70–83, doi:10.1016/j.rse.2011.09.027, 2012.
- Vernier, J.-P., Thomason, L. W., Fairlie, T. D., Minnis, P., Palikonda, R., and Bedka, K. M.: Comment on "Large Volcanic Aerosol Load in the Stratosphere Linked to Asian Monsoon Transport", *Science*, 339, 647, doi:10.1126/science.1227817, 2013.
- Walker, J. C., Carboni, E., Dudhia, A., and Grainger, R. G.: Improved detection of sulphur dioxide in volcanic plumes using satellite-based hyperspectral infra-red measurements: application to the Eyjafjallajökull 2010 eruption, *J. Geophys. Res.*, 117, D00U16, doi:10.1029/2011JD016810, 2012.
- Watson, I., Realmuto, V., Rose, W., Prata, A., Bluth, G., Gu, Y., Bader, C., and Yu, T.: Thermal infrared remote sensing of volcanic emissions using the moderate resolution imaging spectroradiometer, *J. Volcanol. Geoth. Res.*, 135, 75–89, 2004.
- Werner, C. A., Doukas, M. P., and Kelly, P. J.: Gas emission from failed and actual eruptions from Cook Inlet Volcanoes, Alaska, 1989–2006: *Bull. Volc.*, 73, 155–173, doi:10.1007/s00445-011-0453-4, 2011.
- Yang, K., Krotkov, N., Krueger, A., Carn, S., Bhartia, P. K., and Levelt, P.: Retrieval of Large Volcanic SO₂ columns from the Aura Ozone Monitoring Instrument (OMI): Comparisons and Limitations, *J. Geophys. Res.*, 112, D24S43, doi:10.1029/2007JD008825, 2007.
- Yang, K., Liu, X., Bhartia, P., Krotkov, N., Carn, S., Hughes, E., Krueger, A., Spurr, R., and Trahan, S.: Direct retrieval of sulfur dioxide amount and altitude from spaceborne hyperspectral UV measurements: Theory and application, *J. Geophys. Res.*, 115, D00L09, doi:10.1029/2010JD013982, 2010.
- Yurganov, L. N., Rakitin, V., Dzhola, A., August, T., Fokeeva, E., George, M., Gorchakov, G., Grechko, E., Hannon, S., Karpov, A., Ott, L., Semutnikova, E., Shumsky, R., and Strow, L.: Satellite- and ground-based CO total column observations over 2010 Russian fires: accuracy of top-down estimates based on thermal IR satellite data, *Atmos. Chem. Phys.*, 11, 7925–7942, doi:10.5194/acp-11-7925-2011, 2011.