



HAL
open science

Nitrogen compounds emission and deposition in West African ecosystems: comparison between wet and dry savanna

Claire Delon, Corinne Galy-Lacaux, Marcellin Adon, Catherine Liousse, Dominique Serça, B. Diop, A. Akpo

► To cite this version:

Claire Delon, Corinne Galy-Lacaux, Marcellin Adon, Catherine Liousse, Dominique Serça, et al.. Nitrogen compounds emission and deposition in West African ecosystems: comparison between wet and dry savanna. *Biogeosciences Discussions*, 2011, 8, pp.7221-7256. 10.5194/bgd-8-7221-2011 . hal-00766838

HAL Id: hal-00766838

<https://hal.science/hal-00766838>

Submitted on 19 Jan 2022

HAL is a multi-disciplinary open access archive for the deposit and dissemination of scientific research documents, whether they are published or not. The documents may come from teaching and research institutions in France or abroad, or from public or private research centers.

L'archive ouverte pluridisciplinaire **HAL**, est destinée au dépôt et à la diffusion de documents scientifiques de niveau recherche, publiés ou non, émanant des établissements d'enseignement et de recherche français ou étrangers, des laboratoires publics ou privés.



Distributed under a Creative Commons Attribution 4.0 International License

This discussion paper is/has been under review for the journal Biogeosciences (BG).
Please refer to the corresponding final paper in BG if available.

Nitrogen compounds emission and deposition in West African ecosystems: comparison between wet and dry savanna

C. Delon^{1,2}, **C. Galy-Lacaux**^{1,2}, **M. Adon**^{1,2,3}, **C. Lioussé**^{1,2}, **D. Serça**^{1,2}, **B. Diop**⁴,
and **A. Akpo**⁵

¹Université de Toulouse, UPS, LA (Laboratoire d'Aérodologie), Toulouse, France

²CNRS, LA (Laboratoire d'Aérodologie), UMR5560, Toulouse, France

³Laboratoire de Physique de l'Atmosphère, Abidjan, Côte d'Ivoire

⁴Université de Bamako, Mali

⁵Université Abomey Calavi, Cotonou, Bénin

Received: 28 June 2011 – Accepted: 13 July 2011 – Published: 21 July 2011

Correspondence to: C. Delon (claire.delon@aero.obs-mip.fr)

Published by Copernicus Publications on behalf of the European Geosciences Union.

BGD

8, 7221–7256, 2011

Nitrogen compounds emission and deposition in West Africa

C. Delon et al.

Title Page

Abstract

Introduction

Conclusions

References

Tables

Figures

⏪

⏩

◀

▶

Back

Close

Full Screen / Esc

Printer-friendly Version

Interactive Discussion



Abstract

Surface emission and deposition fluxes of nitrogen compounds have been studied in five sites of West Africa during the period 2002 to 2007. Measurements of N deposition fluxes have been performed in IDAF sites representative of main west and central African ecosystems, i.e, 3 stations in dry savanna ecosystems (from 15° N to 12° N), and 2 stations in wet savanna ecosystems (from 9° N to 6° N). Dry deposition fluxes are calculated from surface measurements of NO₂, HNO₃ and NH₃ concentrations and simulated deposition velocities, and wet deposition fluxes are calculated from NH₄⁺ and NO₃⁻ concentration in samples of rain. Emission fluxes are evaluated including simulated NO biogenic emission from soils, emissions of NO_x and NH₃ from biomass burning and domestic fires, and volatilization of NH₃ from animal excreta. This paper is a tentative to link the variability of rain and the intra and inter annual variability of emission and deposition processes, and to compare these evolutions between dry and wet savanna ecosystems. In dry savanna ecosystems where the rain season lasts mainly from June to September, the occurrence of rain correlates with the beginning of emission and deposition fluxes. This link is less obvious in wet savanna ecosystems (wet season mainly from May to October), where the surface is less submitted to drastic changes in terms of water content. Whatever the location, the natural variability of rain from year to year does not exceed 15%, and does not induce a strong impact on emission and deposition magnitude. Due to the scarcity of available data on the African continent, it is of first importance to combine data from different origins (surface measurements, satellite and modelling) to document the atmospheric Nitrogen cycle in these tropical regions.

1 Introduction

The flux of a trace gas between the soil and the atmosphere is the result of three basic processes: production, consumption and transport. In the case of reactive nitrogen (N_r), production leads to emission of N compounds such as NO and NH₃, and

BGD

8, 7221–7256, 2011

Nitrogen compounds emission and deposition in West Africa

C. Delon et al.

Title Page

Abstract

Introduction

Conclusions

References

Tables

Figures

⏪

⏩

◀

▶

Back

Close

Full Screen / Esc

Printer-friendly Version

Interactive Discussion



consumption is preceded by transport and deposition of compounds such as gases (NH_3 , NO_2 , HNO_3 , Peroxy Acetyl Nitrates,...), and particles (pNH_4^+ , pNO_3^-). The atmospheric nitrogen budget depends on emission and deposition fluxes both as reduced and oxidized compounds. The deposition flux is both driven by wet and dry deposition processes. Direct methods (eddy covariance, gradient method) and indirect methods (inferential method combined to concentrations measurements) are available to determine dry deposition fluxes. The DEBITS (DEposition of Biogeochemically Important Trace Species) committee in charge of deposition studies in IGAC (International Global Atmospheric Chemistry) has decided to use indirect dry deposition fluxes determination in tropical sites, because of difficulties to operate sophisticated direct methods of fluxes measurements in remote sites (Wolff et al., 2010, Sutton et al., 2007). Recording to this, dry deposition fluxes are here estimated using the inferential method, that is combining measurements of concentrations and modelling of deposition velocity according to the resistance analogy (Wesely (1989), Zhang et al. (2003) and references therein).

IDAF (IGAC/DEBITS/Africa) network started in 1995 in tropical Africa. The major objectives of IDAF are to measure wet and dry deposition fluxes, to identify the relative contribution of natural and anthropogenic sources, and the factors regulating these fluxes. The IDAF activity is based on high quality measurements of atmospheric chemical data (gaseous, precipitation and aerosols chemical composition) on the basis of a multi-year monitoring (<http://idaf.sedoo.fr>).

Natural emissions from soils are produced by microbial processes (nitrification/denitrification), and several modelling approaches have allowed global and regional estimates of NO (Yienger and Levy, 1995, Butterbach-Bahl et al., 2001, Stohl et al., 1996; Steinkamp and Lawrence, 2011) and NH_3 (Bouwman et al., 1997) emissions from soils. A dynamic approach of calculating NO fluxes from soils, has been developed (Delon et al., 2007) and applied in the Sahel region (Delon et al., 2008). Compared to existing inventories, the main advantage of this approach is to be coupled on line with meteorological parameters.

Nitrogen compounds emission and deposition in West Africa

C. Delon et al.

Title Page

Abstract

Introduction

Conclusions

References

Tables

Figures

⏪

⏩

◀

▶

Back

Close

Full Screen / Esc

Printer-friendly Version

Interactive Discussion



Anthropogenic emissions of N compounds in the atmosphere have been widely studied, often in temperate regions. At the global scale, reactive N production continues to increase every year, dominated by agricultural activities, fossil fuel energy, as well as biofuels, leading to a global estimate of 187 Tg yr⁻¹ in 2005 (Galloway et al., 2008).

In tropical regions, the estimate of biogenic N emitted and deposited is less easy to calculate, because of a lack of data.

In this study, a first attempt at estimating the nitrogen emission and deposition fluxes is made for the period 2002 to 2007, through measurements and simulations at five stations of the IDAF network situated in dry and wet savanna ecosystems, as shown in Fig. 1.

In a preceding work detailed in Delon et al. (2010), the Sahel atmospheric nitrogen budget for the year 2006 was made through measurements and simulations. The method used in the present study is the same as the one detailed in Delon et al. (2010), but applied on a longer period (2002 to 2007) and for 2 more sites located in wet savanna areas. The present work allows a comparison between two different nitrogen emitting ecosystems, for different years and different points at the local scale. The present paper is actually a continuation of Delon et al. (2010), as it uses the same methods for the calculation of fluxes, with the integration of the description of wet savanna emission and deposition processes.

In the following, we will give details on the calculation of N compounds emission fluxes from biomass burning (NO_x and NH₃), domestic fires (NO_x and NH₃), soils (NO) and volatilization (NH₃), and on N compounds dry (HNO₃, NO₂, NH₃) and wet deposition fluxes (NH₄⁺ and NO₃⁻). In a second time, we will try to give an analysis of inter and intra annual variation of emission and deposition fluxes along a latitudinal transect (from 6.1° N to 15.1° N), for the period 2002 to 2007.

We recall however that all the description of materials and methods have already been written in Delon et al. (2010), and only a brief summary will be given in the following paragraphs.

**Nitrogen compounds
emission and
deposition in West
Africa**

C. Delon et al.

Title Page

Abstract

Introduction

Conclusions

References

Tables

Figures



Back

Close

Full Screen / Esc

Printer-friendly Version

Interactive Discussion



2 Materials and methods

2.1 Presentation of measurement sites

The study will focus on 5 stations of the IDAF network: 3 stations are located in dry savanna: Agoufou, Mali (15.3° N, 1.5° W), Banizoumbou, Niger (13.3° N, 2.4° E), Katibougou, Mali (12.5° N, 7.3° W) and 2 stations are located in wet savanna: Djougou, Benin (9.7° N, 1.7° E) and Lamto, Ivory Coast (6.1° N, 5° W). In Agoufou and Djougou, data have been collected from 2005 till today (but presented here from 2005 to 2007), and in Banizoumbou, Katibougou and Lamto, data are available from 1998 till today (but presented from 2002 to 2007). Comprehensive descriptions of the stations can be found in Mougouin et al. (2009) for Agoufou, in Galy-Lacaux and Modi (1998) for Banizoumbou, in Adon et al. (2010) for Katibougou and Djougou, and Yoboué et al. (2005) for Lamto. Fig. 1 gives the geographical location and the dominant ecosystem type of the IDAF stations.

2.2 Emission fluxes

Tropical savannas may be major sources of Nitrogen Oxides (NO) (Cardenas et al. (1994), Poth et al. (1995), Delmas et al. (1991), Serça et al., 1998). However, the vast majority of existing data have been collected in Central and South American ecosystems. In contrast, only few data exist on natural NO emissions from African ecosystem (Serça et al. (1994), Meixner et al. (1997), Scholes et al. (1997), Feig et al., 2008). Furthermore, in West Africa, biomass burning contributes to increase N compounds concentrations in the atmosphere, through NO_x and NH₃ emissions (Delmas et al., 1995). NH₃ volatilization is also an important and largely unstudied N loss term (Schaeffer et al. (2003), Bouwman et al., 1997), contributing to N deposition in areas downwind of sources.

BGD

8, 7221–7256, 2011

Nitrogen compounds emission and deposition in West Africa

C. Delon et al.

Title Page

Abstract

Introduction

Conclusions

References

Tables

Figures

⏪

⏩

◀

▶

Back

Close

Full Screen / Esc

Printer-friendly Version

Interactive Discussion

Each potential source of N compound emission to the atmosphere used in this study is detailed in this paragraph. For more details on the whole calculation procedure, the reader is invited to refer to Delon et al. (2010).

2.2.1 Biomass burning

The global biomass burning inventories for NO_x and NH_3 , use the L3JRC burnt area product based on the SPOT-VGT vegetation satellite and Global Land Cover (GLC) vegetation map, together with data on biomass densities and burning efficiencies (Lioussé et al., 2010). Emission factors for gaseous species were chosen following Andreea and Merlet (2001). Monthly emissions are evaluated around each site in a $5^\circ/5^\circ$ window. All the database was exploited here to derive interannual emissions from 2002 to 2007. Note that the biomass density is not a dynamic parameter in the algorithm. The interannual variability of biomass burning is only determined by the variability of burned surfaces. The total uncertainty applied on NH_3 and NO_x fluxes is 54 %.

Long range transport of biomass burning emission compounds from the southern hemisphere does not affect northern sites of dry savanna areas (Mari et al. (2008), Sauvage et al., 2007). This is not the case for wet savanna sites that are situated further south (9.7° N for Djougou, and 6.1° N for Lamto), and that may be impacted by potential dry deposition of N compounds from biomass burning occurring in the southern hemisphere (Thouret et al., 2009) in June–July–August (dry season of the southern hemisphere). Ammonium and nitrate loads in rains in the wet savanna of Lamto has been believed to be due to regional sources (animal waste and emissions by natural soils) as well as biomass burning and domestic fuelwood burning (Yoboué et al., 2005). Biomass burning influence from the southern hemisphere should not be excluded.

2.2.2 Domestic fires

The rural population in Africa relies on wood and charcoal as the main fuels for domestic consumption (de Montalembert and Clement, 1983). In rural areas of Africa, and often among urban population also (Barnes et al., 2001), much of the biofuel is used

BGD

8, 7221–7256, 2011

Nitrogen compounds emission and deposition in West Africa

C. Delon et al.

Title Page

Abstract

Introduction

Conclusions

References

Tables

Figures

⏪

⏩

◀

▶

Back

Close

Full Screen / Esc

Printer-friendly Version

Interactive Discussion



for cooking all along the year without any seasonal pattern in contrast to other types of biomass burning which tend to follow seasonal patterns (Duncan et al., 2003). The source of NO_x from biofuel and field burning is about 10% of the source from fossil fuel combustion (Yevich and Logan, 2003), with strong variations at the regional scale.

Emissions of NO_x and NH₃ by domestic fires in dry and wet savannas have been evaluated at the yearly scale considering the methodology developed in Junker and Lioussé (2008) and Delon et al. (2010). Yearly emissions (typical for 2003) are evaluated around each site in a 5°/5° window. Uncertainties are mainly linked to wood and charcoal consumption estimates (50%, Assamoi and Lioussé, 2010) and emission factors (31%, Andreae and Merlet, 2001). The total uncertainty applied to domestic fires is 60% for both compounds.

2.2.3 Biogenic Nitrogen Oxide (NO) from soils

Nitric oxide is a gaseous intermediate of both nitrification and denitrification processes. In sites that receive pulsed precipitation events or extended dry periods, wetting of a previously dry soil often results in a large flux of NO (Davidson et al. (1991), Davidson et al. (1993), Scholes et al. (1997), Martin et al., (1998), Hartley and Schlesinger, 2000).

Biogenic NO fluxes are simulated with the model ISBA (Interaction Surface Biosphere Atmosphere, Noilhan and Mahfouf (1996)), coupled with a Neural Network derived emission module (Delon et al. (2007), Delon et al. (2008), Delon et al., 2010). Emissions depend on surface WFPS (Water Filled Pore Space), soil temperature at two depths (surface and 20–30 cm), wind speed, pH, sand percentage, and fertilization rate. Soil moisture has the prominent influence in dry savanna ecosystems, because of strong pulses of emission at the beginning at the wet season, when the first rains fall on very dry soils (Jaeglé et al. (2004), Stewart et al. (2008), Delon et al. (2008)). In wet savanna, this phenomenon is reduced, due to higher soil moisture content even during the dry season. The uncertainty of the mean annual biogenic NO flux from soil is close to 20% for each site.

Nitrogen compounds emission and deposition in West Africa

C. Delon et al.

Title Page

Abstract

Introduction

Conclusions

References

Tables

Figures

⏪

⏩

◀

▶

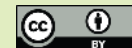
Back

Close

Full Screen / Esc

Printer-friendly Version

Interactive Discussion



Meteorological conditions needed to run the ISBA model are provided by the forcing, derived from satellite data, and developed in ALMIP (AMMA Land surface Model Intercomparison Project), described in Boone et al. (2009).

2.2.4 NH₃ volatilization

5 Large pulse of NO after wetting of a previously dry soil coincides with an increase in extractable soil NH₄⁺ and high rates of gross N mineralization and nitrification (Davidson et al., 1993). Similar to NO production from nitrification, rates of NH₃ volatilization are sensitive to soil conditions that influence NH₄⁺ concentrations and turnover in the soil (Barger et al., 2005). An illustration of this process is given in Adon et al.
10 (2010), who show that the seasonal cycle of ammonia and nitric dioxide are strongly correlated. Subsequently, NO and NH₃ emissions are linked and both sensitive to constraints on microbial activity (McCalley et al., 2008). For the remote sites of the IDAF network, neither industrial nitrogen sources nor nitrogenous emissions from synthetic fertilization need to be considered, due to the remoteness of sites from large cities.
15 Bouwman et al. (1997) have stated that synthetic fertilization in West Africa is less than 0.5 kgNha⁻¹yr⁻¹, whereas organic fertilization from domestic animal can be much larger, as described below. The NH₃ flux released to the atmosphere by volatilization is calculated from the N input by organic fertilization. This N input is the product of the N release by livestock, in kgN.animal⁻¹.yr⁻¹, adapted from Mosier et al. (1998) and Schlecht and Hiernaux (2004), by the Animal population in each region of each country (Food and Agriculture Organization, FAO, Global Livestock Production and Health Atlas GLiPHA (2009, <http://kids.fao.org/glipha/>). A total N input of 23 kgNha⁻¹yr⁻¹ in Agoufou (Mali), 25 kgNha⁻¹yr⁻¹ in Banizoumbou (Niger), 11 kgNha⁻¹yr⁻¹ in Kati-
20 bougou (Mali), 8 kgNha⁻¹yr⁻¹ in Djougou (Benin) and 8 kgNha⁻¹yr⁻¹ in Lamto (Ivory Coast) has been calculated.
25

30% of this N input is released to the atmosphere by NH₃ volatilization, the rest is assimilated in soils and used as fertilization rate for the biogenic NO emission in ISBA, described above. As a consequence, the N released by volatilization in Agoufou is

Nitrogen compounds emission and deposition in West Africa

C. Delon et al.

Title Page

Abstract

Introduction

Conclusions

References

Tables

Figures

⏪

⏩

◀

▶

Back

Close

Full Screen / Esc

Printer-friendly Version

Interactive Discussion



7.2 kgNha⁻¹yr⁻¹, 7.7 kgNha⁻¹yr⁻¹ in Banizoumbou, 3.4 kgNha⁻¹yr⁻¹ in Katibougou, 2.5 kgNha⁻¹yr⁻¹ in Djougou and 2.3 kgNha⁻¹yr⁻¹ in Lamto.

In the present study, an intra annual variation of NH₃ volatilization has been added, with higher emissions during the wet season. The increase in soil moisture at the beginning of the wet season is correlated to the increase of NO and NH₃ concentrations in the dry savanna sites (Adon et al., 2010). Furthermore, the excreta quantity is not constant throughout the year, and presents a maximum at the end of the wet season, both in Agoufou and Banizoumbou (Hiernaux et al. (1998), Hiernaux and Turner (2002), Schlecht and Hiernaux, 2004), because animals have been better fed during the wet season. The excreta quality is also increased during the wet season, but too few data on the subject are available to be included in our study. Due to a lack of equivalent studies in Katibougou, Djougou and Lamto, we have supposed that the processes were similar than in Agoufou and Banizoumbou, but with a smoother intensity because the available vegetation for grazing is more important in Katibougou, Djougou and Lamto than in Agoufou and Banizoumbou, due to their latitudinal position. The quantity of N released from animal excreta will therefore be maximum in October and November. The combination of these two processes (increase of soil moisture at the beginning of the wet season and increase of excreta quantity at the end of the wet season) gives a monthly evolution of the NH₃ volatilization, showing 2 maxima in June and October.

2.3 Deposition fluxes

2.3.1 Dry deposition fluxes

The dry deposition flux (molec cm⁻² s⁻¹) is the product of the measured concentration (molec cm⁻³) by the deposition velocity (cms⁻¹). The deposition velocity is simulated in the ISBA surface model according to Wesely (1989). Cuticle and soil resistances for each site are use the parameterization developed in Zhang et al. (2003) (i.e. soil resistances depend on the type of soil and vegetation found on site). The meteorological forcing used for these simulations is the same as the one used for the biogenic NO

BGD

8, 7221–7256, 2011

Nitrogen compounds emission and deposition in West Africa

C. Delon et al.

Title Page

Abstract

Introduction

Conclusions

References

Tables

Figures

⏪

⏩

◀

▶

Back

Close

Full Screen / Esc

Printer-friendly Version

Interactive Discussion



emission fluxes calculation (ALMIP forcing). However, the forcing in ALMIP is available at 10 m, whereas the concentrations of gases are measured at 1.5 m. A logarithmic decrease of the wind forcing from 10 to 1.5 m, depending on the rugosity of the site, has been applied, to calculate deposition velocities at 1.5 m.

5 Monthly means (from 3-hourly values) of deposition velocities for NO_2 , HNO_3 and NH_3 have been calculated in order to reproduce the seasonal cycle of the deposition process at each site. Monthly mean values of deposition velocities for HNO_3 range from 0.40 to 1.00 cm s^{-1} in Agoufou, 0.42 to 1.11 cm s^{-1} in Banizoumbou, 0.49 to 1.13 cm s^{-1} in Katibougou, 0.43 to 0.91 cm s^{-1} in Djougou and 0.52 to 0.85 cm s^{-1} in
10 Lamto. Maximum values are close to mean values calculated in european ecosystems over short vegetation (such as grasslands or peats) by Flechard et al. (2011), showing HNO_3 Vd in the range of 1.0 to 1.2 cm s^{-1} . The types of vegetation and soil are completely different between the tropical sites considered in this study and the european sites of Flechard et al. (2011) study, and maximum values are found during the wet
15 season, when the vegetation cover is at its maximum, whereas vegetation in european sites is less subject to such drastic seasonal changes. However, the annual means remain 2 to 3 times lower than deposition velocities calculated by Zhang et al. (2003) for deserts and short grass ecosystems. This discrepancy is mainly due to the fact that deposition velocities in Zhang et al. (2003) are calculated at 20 m above ground,
20 whereas deposition velocities in the present study are calculated at 1.5 m. In that case, direct comparison of deposition velocities is not adequate because of large differences in the wind speeds between the two heights. NO_2 deposition velocities range from 0.13 to 0.35 cm s^{-1} in Agoufou, 0.14 to 0.39 cm s^{-1} in Banizoumbou, 0.14 to 0.43 cm s^{-1} in Katibougou, 0.18 to 0.46 cm s^{-1} in Djougou and 0.21 to 0.46 cm s^{-1} in Lamto. NH_3
25 deposition velocities range from 0.14 to 0.41 cm s^{-1} in Agoufou, 0.16 to 0.49 cm s^{-1} in Banizoumbou, 0.16 to 0.53 cm s^{-1} in Katibougou, 0.22 to 0.52 cm s^{-1} in Djougou, and 0.26 to 0.54 cm s^{-1} in Lamto.

Nitrogen compounds emission and deposition in West Africa

C. Delon et al.

[Title Page](#)[Abstract](#)[Introduction](#)[Conclusions](#)[References](#)[Tables](#)[Figures](#)[⏪](#)[⏩](#)[◀](#)[▶](#)[Back](#)[Close](#)[Full Screen / Esc](#)[Printer-friendly Version](#)[Interactive Discussion](#)

Nitrogen compounds emission and deposition in West Africa

C. Delon et al.

Title Page

Abstract

Introduction

Conclusions

References

Tables

Figures

⏪

⏩

◀

▶

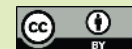
Back

Close

Full Screen / Esc

Printer-friendly Version

Interactive Discussion



Although bi directional air surface exchange of NH_3 has been frequently observed over a variety of land surfaces, the compensation point concept is not applied in this study for the calculation of NH_3 dry deposition flux. Indeed, Zhang et al. (2010) have stated that semi natural vegetation are generally not exposed to large amounts of N and therefore tend to be a sink for NH_3 rather than a source, with compensation point values close to zero. In our study, deposition and emission fluxes of NH_3 are evaluated separately, giving at the end the net flux of NH_3 as it should be done using the compensation point concept.

The concentrations are measured at each site by passive samplers. The sampling procedure and chemical analysis of samples, as well as the validation method, have been widely detailed in Adon et al. (2010). Furthermore, Adon et al. (2010) present the evolution of NO_2 , NH_3 and HNO_3 concentrations along the period 1998–2007 for each IDAF station.

The total uncertainty applied to the fluxes is linked to the concentration measurements, the deposition velocity, and to terms associated to the turbulence in the atmosphere and assumptions made to obtain monthly means of deposition velocities. The total rate of uncertainty applied for deposition fluxes is 70 % for NO_2 , 31 % for NH_3 and 38 % for HNO_3 (Delon et al., 2010).

2.3.2 Wet deposition fluxes

An automatic precipitation collector, specially designed for the IDAF network was located in the five IDAF sites (Galy-Lacaux et al., 2009). The automatic instrument collects precipitation with a high degree of cleanliness in a single-use polyethylene bag, avoiding aerosol deposit before the onset of the rain. The surface of rain collection is 225 cm^2 . After each precipitation event, 50 cm^2 of the collected precipitation is sampled in Greiner tubes. The preservation of the rainwater samples is an important problem because of microbial degradation which can modify the chemical composition of rainwater. All samples were stored in a deep freeze environment from collection to analysis.

The wet deposition flux is the product of the ammonium and nitrate concentrations in rain (annual Volume Weighted Mean VWM) by the annual rainfall.

3 Results

3.1 Analysis of processes responsible for emission and deposition of N compounds

Fig. 2 shows the detail of nitrogen compounds emission and dry deposition fluxes, at the 5 IDAF stations, with monthly mean rainfall evolution calculated from TRMM-3B42 data in mm month^{-1} , from 2002 to 2007. The results are presented along a pluviometry gradient, from Agoufou, the northernmost position with only $482 (\pm 81)$ mm of annual rain, Banizoumbou ($664 (\pm 86)$ mm), Katibougou ($720 (\pm 117)$ mm), Djougou ($1115 (\pm 150)$ mm), to Lamto, the southernmost position, with $1100 (\pm 101)$ mm. Annual means and standard deviations of precipitation are calculated for the 2002–2007 period, from TRMM-3B42 data in a 5° window around each site. Compared to local measurements, we found that TRMM-3B42 data overestimates local measurements by 25% in dry savanna areas, and underestimates them by 15% in wet savannas. TRMM-3B42 precipitation data have also been used for the simulation of deposition velocities and NO emission from soils in ISBA.

3.1.1 Ammonia release

Oxidized (Fig. 2a–e) and reduced (Fig. 2f–j) N compounds deposition and emission fluxes in monthly means are presented separately to better understand the sources influence.

In theory, more rain will allow an increase in the vegetation available for grazing, i.e. a better quality and higher quantity of food for animals, which will induce more N in animal manure, more NH_3 from volatilization, and therefore more dry deposition of NH_3 (Fig. 2f–j). This volatilization of NH_3 will be retrieved in the rains, and scavenged

BGD

8, 7221–7256, 2011

Nitrogen compounds emission and deposition in West Africa

C. Delon et al.

Title Page

Abstract

Introduction

Conclusions

References

Tables

Figures

◀

▶

◀

▶

Back

Close

Full Screen / Esc

Printer-friendly Version

Interactive Discussion



by the wet deposition, which will further increase the NH_4^+ availability in soils, and again the NH_3 volatilization.

In dry savanna sites (Agoufou, Banizoumbou and Katibougou), Fig. 2 shows that a first maximum of emissions is found at the beginning of the rain season (both for reduced and oxidised compounds), due to the starting up of the microbial activity consecutive to higher soil moisture. A rebound is observed in NH_3 dry deposition fluxes in October, due to the increase of N content in cattle dung at the end of the wet season. A third increase (almost visible in Djougou and Lamto) is observed during the dry season, because of biomass burning emissions (except in Agoufou, where regional biomass burning sources do not affect the site). NH_3 volatilization and further deposition show a strong seasonal variation in dry savanna areas, because rates of NH_3 volatilization are sensitive to soil moisture conditions, as explained above. The interannual variability of NH_3 volatilization cannot be discussed here, because data are given for a single year and reproduced each year in the same way. In wet savannas, the ammonia release is mostly due to biomass burning emissions, discussed below. Because of a higher soil water content all along the year, seasonal variations in NH_3 volatilization and further deposition are less marked.

3.1.2 Biogenic emissions from soils and microbial activity

While different in magnitude, several processes are common to dry and wet savanna ecosystems: If rain increases during the wet season, the biogenic NO emission increases, as well as the Oxidized N dry deposition fluxes (Fig. 2a–e). The difference between wet and dry savanna ecosystem in their capacity to release biogenic NO from soils may find some explanation in microbial processes: microbial activity has been studied in Lamto and Banizoumbou by Serça et al. (1998), showing very different carbon mineralization potential and potential net accumulation of ammonium between the two sites (very low in Banizoumbou, maximum in Lamto), whereas nitrate accumulation was equivalent in the two sites. That study did not find any significant correlation between nitrate accumulation and NO emissions.

Nitrogen compounds emission and deposition in West Africa

C. Delon et al.

Title Page

Abstract

Introduction

Conclusions

References

Tables

Figures



Back

Close

Full Screen / Esc

Printer-friendly Version

Interactive Discussion



The type of vegetation growing on site has also an important effect on biogenic NO emission from soils: nutrient poor savanna ecosystems of Agoufou and Banizoumbou (and in a less extent in Katibougou) are characterized by low denitrification potentials and relatively high nitrate accumulation. Thus substantial NO emissions in dry savanna ecosystems are most likely related to nitrification processes, whereas low potential of nitrification and denitrification rates in Lamto may be partly responsible of low NO fluxes (Leroux et al., 1995). Low nitrification rates in wet savanna ecosystem could be due to inhibition of nitrifier growth and/or functionality by specific compounds excluded by the roots of the graminea (Munro, 1966). The main herbaceous vegetation on site in Lamto (Serça et al., 1998) and Djougou (J. Harris and Z. Sevigona, personal communication) is *hyparrhenia*, and is considered as a nitrifier inhibitor, which could also explain the lower biogenic NO emissions during the wet season in those 2 sites compared to dry savanna emissions.

Indeed, in the five sites studied in this work, biogenic NO emission fluxes are less important in wet savanna only if the wet seasonal mean is calculated: wet seasonal means give $3.2 \pm 0.6 \text{ kgNha}^{-1} \text{ yr}^{-1}$ in dry savanna sites, and $2.6 \pm 0.7 \text{ kgNha}^{-1} \text{ yr}^{-1}$ in wet savanna sites. No pulse effect occurs in wet savannas because of higher mean soil water content. Dry season emissions are nearly 0 in dry savanna sites, whereas they keep being significant in wet savanna sites. Consequently, the annual mean for dry savanna sites is only 1.39 ± 0.28 whereas it is 2.12 ± 0.20 in wet savannas.

Surface soils in arid and semi arid ecosystems often experience large seasonal fluctuations in moisture content, and the mineralization pulse associated with soil drying/rewetting has the potential to significantly impact N release, whereas comparatively in soils maintained at equivalent mean soil moisture, the N turnover is decreased (Millet et al., 2004).

Furthermore, dry savanna ecosystems are characterized by a strong annual vegetation cycle (see FAPAR curves given for the Sahel region in Galy-Lacaux et al., 2009), whereas wet savanna ecosystems present perennial vegetation. These particular features involve different consumption and release of N in the soils, leading to

BGD

8, 7221–7256, 2011

Nitrogen compounds emission and deposition in West Africa

C. Delon et al.

Title Page

Abstract

Introduction

Conclusions

References

Tables

Figures

⏪

⏩

◀

▶

Back

Close

Full Screen / Esc

Printer-friendly Version

Interactive Discussion



less emissions to the atmosphere in more vegetated areas, whereas more N is lost to the atmosphere in dry savannas before the growing of the vegetation, at the beginning of the wet season. The results found in this work confirm these processes if we focus on wet seasonal means.

3.1.3 Biomass burning

If rain is sufficient, the vegetation will grow during the wet season, and NO_x and NH_3 emission from biomass burning should increase during the following dry season.

In dry savanna ecosystems, NO_x emissions from biomass burning is twice lower than NO biogenic emission from soils. Indeed, the significant pulse effect occurring at the beginning of the wet season allows high biogenic emissions, whereas in contrast low vegetation density is available in the Sahel region (almost null in Agoufou where no biomass burning emission is measured) leading to a low amount of burned biomass. Biogenic NO emissions from soils and NO_x emissions from biomass burning in annual means represent respectively $1.39 \pm 0.28 \text{ kgNha}^{-1} \text{ yr}^{-1}$ and $0.61 \pm 0.52 \text{ kgNha}^{-1} \text{ yr}^{-1}$ in dry savanna ecosystems.

Some particular features are observed in wet savanna ecosystems: the vegetation density is more important in Djougou and Lamto, which leads to NO biogenic emission from soils equivalent to the NO_x biomass burning emission ($2.12 \pm 0.20 \text{ kgNha}^{-1} \text{ yr}^{-1}$ and $2.20 \pm 0.40 \text{ kgNha}^{-1} \text{ yr}^{-1}$ respectively in annual means). Furthermore, NO emission from soil is enhanced after fire occurrence, as mentioned by Serça et al. (1998), NO fluxes are the result of the product of site and fire effect. Indeed, this process could be explained by the immediate impact of fire on nitrogen cycling, with an increase of the nitrification activity (Menaut et al., 1993). Furthermore, it has been shown that fire seldom decreases total soil N pools. N volatilization losses caused by frequent burning in savannas are often balanced by N inputs in non-associative N fixation, or N deposition in rain (Coetsee et al., 2010). This may explain the higher biogenic NO emission in wet savanna than in dry savanna in annual mean.

Nitrogen compounds emission and deposition in West Africa

C. Delon et al.

Title Page

Abstract

Introduction

Conclusions

References

Tables

Figures

⏪

⏩

◀

▶

Back

Close

Full Screen / Esc

Printer-friendly Version

Interactive Discussion



In dry savannas, the NH_3 biomass burning emission signal in Fig. 2f–h (around november-december, detected through NO_x biomass burning emission in Fig. 2a–c) is flooded by the volatilization signal (up to $11 \text{ kgNha}^{-1}\text{yr}^{-1}$ in Agoufou and Bani-zoumbou, and $5 \text{ kgNha}^{-1}\text{yr}^{-1}$ in Katibougou). The annual mean for volatilization is $6.09 \pm 2.31 \text{ kgNha}^{-1}\text{yr}^{-1}$ in dry savanna, whereas the NH_3 biomass burning emission is $0.40 \pm 0.35 \text{ kgNha}^{-1}\text{yr}^{-1}$.

On the contrary, wet savanna ecosystems present a higher biomass burning emission signal of NH_3 (Fig. 2i–j), which can reach $12 \text{ kgNha}^{-1}\text{yr}^{-1}$ in Lamto and $6 \text{ kgNha}^{-1}\text{yr}^{-1}$ in Djougou as maximum values, and gives an annual mean of $1.91 \pm 0.56 \text{ kgNha}^{-1}\text{yr}^{-1}$, whereas volatilization reaches $4 \text{ kgNha}^{-1}\text{yr}^{-1}$ as a maximum value in both sites ($2.40 \pm 0.09 \text{ kgNha}^{-1}\text{yr}^{-1}$ in annual mean). Total N emission from biomass burning in annual mean ($\text{NO}_x + \text{NH}_3$), is $1.02 \pm 0.87 \text{ kgNha}^{-1}\text{yr}^{-1}$ in dry savanna ecosystems, and $4.11 \pm 0.96 \text{ kgNha}^{-1}\text{yr}^{-1}$ in wet savannas.

Domestic fires emissions do not present any interannual variability and annual means are $0.29 \pm 0.20 \text{ kgNha}^{-1}\text{yr}^{-1}$ in dry savanna, and $0.97 \pm 0.02 \text{ kgNha}^{-1}\text{yr}^{-1}$ in wet savanna, which represents respectively 3 % and 10 % of the total emission budget.

All annual means emission fluxes are reported in Table 1.

3.2 Variability of emission and deposition fluxes and comparison between wet and dry savanna sites

Africa leads all other continents in annual fire emissions but with relatively small inter-annual variability (van der Werf et al. (2006), Liousse et al. (2010)) at the continental scale. However, in our results we consider a regional scale (5° around each local site), and a smaller time scale (7 years) than a climatic one (50 years considered in van der Werf et al. (2006) study). The availability of biomass (and consequently the quantity of resulting emissions by biomass burning) seems to be driven by the amount of rainfall during the wet season before. Indeed, a lagged correlation between monthly rainfall and monthly emission from biomass burning N compounds has been calculated, giving

BGD

8, 7221–7256, 2011

Nitrogen compounds emission and deposition in West Africa

C. Delon et al.

Title Page

Abstract

Introduction

Conclusions

References

Tables

Figures

⏪

⏩

◀

▶

Back

Close

Full Screen / Esc

Printer-friendly Version

Interactive Discussion

5 a 4 months lagged correlation rate of 0.7 in Banizoumbou, 0.6 in Katibougou and 0.6 in Djougou. In Lamto, the lagged correlation is 0.5 after 6 months. The lag is longer in Lamto, probably because of the longer duration of the rain season, and the correlation slightly lower because of the occurrence of the second short wet season (around the month of October), not connected to a second burning season.

10 Interannual variability in soil water stress tends not to be highest in places that have the largest interannual variability in precipitation but rather at intermediate values (like in Soudano-Sahelian regions where Katibougou is situated), as water ceases to be a limiting factor with increasing rainfall despite continued increase in rainfall variability (Williams et al. (2008), their study focusing on the 1982–2003 period over the African continent). Low vegetation density and humidity stress may probably dampen the eco-physiological sensitivity to rainfall variability. Williams et al. (2008) have shown that Lamto and Djougou sites are situated in regions presenting a higher interannual variability in rainfall than in Sahelian regions, but with low impact on the interannual variability of soil water stress and vegetation cover.

15 At a more local scale, Mougin et al. (2009) have illustrated the fact that in the Gourma region (Mali) where Agoufou is situated, most of the inter-annual variation in annual herbaceous production result from inter-annual variation in the soil moisture regime driven by rainfall volume and distribution. Biogenic NO emissions are highly sensitive to soil water content (directly influenced by rainfall amount), which is somewhat different from soil water stress, i.e.: the soil water content gives the information on the water available for emission processes, whereas soil water stress gives an information on a threshold under which microbes do not activate N production. Biogenic NO emissions decrease/increase if rainfall decreases/increases.

25 In our results, no significant common tendency appears between interannual variability in rainfall intensity and interannual variability in deposition fluxes quantity. Fig. 3 shows the evolution of total dry deposition fluxes ($\text{NO}_2 + \text{HNO}_3 + \text{NH}_3$) in $\text{kgNha}^{-1}\text{yr}^{-1}$ for dry and wet savannas, together with local rain measurements (in mm.h^{-1}). In dry savanna, the correlation between rainfall and total deposition is quite low but remains

BGD

8, 7221–7256, 2011

Nitrogen compounds emission and deposition in West Africa

C. Delon et al.

Title Page

Abstract

Introduction

Conclusions

References

Tables

Figures

⏪

⏩

◀

▶

Back

Close

Full Screen / Esc

Printer-friendly Version

Interactive Discussion



significant (0.51 at Agoufou, 0.33 at Banizoumbou and 0.34 at Katibougou), but does not allow to conclude on a possible intensity effect: i.e. the occurrence of rain and deposition are linked, but if the magnitude of precipitations increases, it does not necessarily involve an increase of the intensity of deposition fluxes. Indeed, as explained before, deposition depends on emission processes, enhanced by rainfall events. The change in rainfall intensity from one year to another does not lead to a direct change in deposition flux intensity.

In wet savanna, correlation between rainfall and deposition fluxes is close to 0, confirming the analysis that processes are less linked to the quantity of rainfall than in dry savanna. Once again, the interannual variability in rainfall quantity does not involve a direct response of emission and deposition processes. No interannual variability has been introduced for the volatilization of NH_3 and for the emission of NO_x and NH_3 by domestic fires (data are given for a single year), which is probably the main reason for not being able to isolate common tendencies between rainfall quantity and N emission/deposition amounts. Furthermore, the short period of study (7 years) does not help the interpretation.

Figure 4a–b presents annual means of emission and deposition contributions for the years 2002 to 2007 in Banizoumbou, Katibougou and Lamto, and for the years 2005 to 2007 for Agoufou and Djougou. Error bars give the order of magnitude of the interannual variability for each component of the budget. As mentioned above, interannual variability is not specified for NH_3 volatilization and for NH_3 and NO_x emission by domestic fires (biofuel), because for these parameters, data are given for a single year. However, it could be useful to recall that uncertainty is 50 % for NH_3 volatilization, and 60 % for biofuel emission.

In Fig. 4a, significant differences appear between sites: Sahelian sites (Agoufou and Banizoumbou) present the highest values of NH_3 volatilization, consequence of highly developed pastoralism in this region. Katibougou is located further south, and the number of cattle heads km^{-2} is less important (respectively 24, 23 and 11 cattle heads km^{-2} in Banizoumbou, Agoufou and Katibougou), leading to lower values of

BGD

8, 7221–7256, 2011

Nitrogen compounds emission and deposition in West Africa

C. Delon et al.

Title Page

Abstract

Introduction

Conclusions

References

Tables

Figures

⏪

⏩

◀

▶

Back

Close

Full Screen / Esc

Printer-friendly Version

Interactive Discussion



NH₃ volatilization. In wet savanna ecosystems, Djougou and Lamto (respectively 8 and 7 cattle headskm⁻²) present moderate values of NH₃ volatilization fluxes (respectively 2.5 and 2.3 kgNha⁻¹yr⁻¹), comparable to other sources. Indeed, the contribution of N compounds emissions from biomass burning in Djougou and Lamto (respectively 1.9 and 2.5 kgNha⁻¹yr⁻¹ for NO_x and 1.5 and 2.3 kgNha⁻¹yr⁻¹ for NH₃) is more important than in dry savanna sites. Biomass burning and volatilization contribution to total emission flux are inverted along the latitudinal gradient from north to south, as the available vegetation is more important, and the number of cattle headskm⁻² is less important.

In Fig. 4b, the dry deposition flux of oxidized and reduced compounds is more important in Agoufou, Banizoumbou and Katibougou than in Djougou and Lamto, whereas the wet deposition flux increases from dry to wet savanna ecosystems. Wet deposition fluxes are correlated to rain amount and concentrations in precipitations. Obviously, wet deposition flux is larger if the rainfall is stronger and if the concentrations are more important. Annual means of wet deposition fluxes (NH₄⁺ + NO₃⁻) are 2.35 ± 1.88, 2.14 ± 0.67, 3.40 ± 0.75, 3.53 ± 0.70, and 5.33 ± 0.97 kgNha⁻¹yr⁻¹ in Agoufou, Banizoumbou, Katibougou, Djougou and Lamto respectively. One should note that in spite of the large difference in precipitation quantity between the two extremes of this gradient, Agoufou (392 mm) and Lamto (1301 mm), the wet deposition flux is only twice in Lamto. Rain in Agoufou presents high concentrations in nitrate and ammonium (respectively 14 and 25 µeq l⁻¹), larger than those measured in Lamto (9 and 21 µeq l⁻¹ of nitrate and ammonium respectively). The combination of annual rainfall depth and measured concentrations leads to a nitrogen wet deposition flux in Lamto only twice the one in Agoufou. The large quantity of rainfall, and above all the longer duration of the rain season in Lamto has a dilution effect on chemical species in rain.

The contribution of different sources of emission, together with the contribution of wet and dry deposition are presented in Fig. 5a–e for each site. In Agoufou, Banizoumbou and Katibougou (dry savannas), dry deposition is superior to wet deposition. The contribution of wet deposition increases in Djougou and Lamto, for the reasons invoked above. In Agoufou and Banizoumbou, as well as in Djougou and Lamto, emission

BGD

8, 7221–7256, 2011

Nitrogen compounds emission and deposition in West Africa

C. Delon et al.

Title Page

Abstract

Introduction

Conclusions

References

Tables

Figures

⏪

⏩

◀

▶

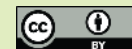
Back

Close

Full Screen / Esc

Printer-friendly Version

Interactive Discussion



fluxes are superior to deposition fluxes, by 3 %, 8 %, 6 % and 2 % respectively. In Katibougou, deposition fluxes are 7 % superior to emission fluxes. Considering the range of uncertainty on total emission (45 %) and deposition (25 %) fluxes, these differences in the budgets in all sites are not significant enough, but could however lead to the conclusion that emission and deposition fluxes are quasi equivalent in wet and dry savannas, with a slight tendency for emission fluxes to be superior to deposition fluxes. The case of Katibougou is a transitional case: Katibougou is located at 12° N, at the boundary between Sahel and Soudano-Sahelian region. The vegetation description is close to Sahelian vegetation, but the quantity of rainfall is more important. Wet and dry deposition fluxes are both substantial, and dominate slightly total emission fluxes.

However, the variability in rainfall amount from year to year does not explain the interannual variability of wet deposition in one single ecosystem. As mentioned above, rainfall variation from year to year does not exceed 15 % in the period 2002–2007, whereas wet deposition variation exceeds this rate in all stations. The complexity and retroactions between emission and deposition contributions prevents from finding an easy and direct link from rainfall to wet deposition. As detailed in Galy-Lacaux and Modi (1998), Galy-Lacaux et al. (2009) and Yoboué et al. (2005), wet deposition annual variations are mainly related to the combination of the natural rainfall and emissions sources variability. If the annual rainfall in each ecosystem does not explain variability in wet deposition, it should be interesting to study the distribution of the rain in each year during each rain season, to have a better understanding of wet deposition distribution. But this is beyond the scope of this study.

The compilation of all components of Fig. 4 and Fig. 5 leads to Fig. 6, presenting the atmospheric reactive N budget in all stations referenced in this study. Total uncertainty is 45 % for emission fluxes, and 25 % for deposition fluxes. One has to keep in mind that this budget is not exhaustive, because measurements do not include all N compounds. Non reactive N compounds (N_2 , N_2O , N_2O_5) are not included in the budget (we only consider the atmospheric reactive N compounds), and organic compounds such as PAN are also omitted from this budget, assuming that they are converted into

Nitrogen compounds emission and deposition in West Africa

C. Delon et al.

Title Page

Abstract

Introduction

Conclusions

References

Tables

Figures



Back

Close

Full Screen / Esc

Printer-friendly Version

Interactive Discussion



NO₂ at high temperatures (Munger et al., 1998). Particulate compounds are not taken into account in the dry deposition flux calculation, because concentrations measured on sites are negligible compared to gas concentrations (Galy-Lacaux, personal communication). However, major reactive N compounds sources and sinks are included to try to balance the budget.

Figure 6 shows that total emission and deposition quantities are in the same order of magnitude for each site, with deposition fluxes of $7.25 \pm 2.60 \text{ kgNha}^{-1}\text{yr}^{-1}$ in Agoufou, $8.16 \pm 1.84 \text{ kgNha}^{-1}\text{yr}^{-1}$ in Banizoumbou, $8.87 \pm 1.59 \text{ kgNha}^{-1}\text{yr}^{-1}$ in Katibougou, $7.07 \pm 0.98 \text{ kgNha}^{-1}\text{yr}^{-1}$ in Djougou, $9.39 \pm 1.07 \text{ kgNha}^{-1}\text{yr}^{-1}$ in Lamto. Emission fluxes are $8.29 \pm 3.88 \text{ kgNha}^{-1}\text{yr}^{-1}$ in Agoufou, $11.45 \pm 5.20 \text{ kgNha}^{-1}\text{yr}^{-1}$ in Banizoumbou, $6.58 \pm 2.52 \text{ kgNha}^{-1}\text{yr}^{-1}$ in Katibougou, $9.11 \pm 3.14 \text{ kgNha}^{-1}\text{yr}^{-1}$ in Djougou, and $10.09 \pm 4.11 \text{ kgNha}^{-1}\text{yr}^{-1}$ in Lamto. Though budgets seem equivalent from dry to wet savanna, this study has shown that a detailed description of processes of emission and deposition leads to different contribution of each component of the budget in the two types of ecosystems.

4 Conclusions

This study is based on original and unique data from remote and seldom explored regions. Satellite data, surface measurements and modelling results were merged to estimate the atmospheric reactive N cycle in West Africa, in five stations of the IDAF network: 3 stations in dry savanna ecosystem, 2 in wet savanna ecosystem, situated along a rainfall gradient from 15° N to 6° N. The N cycle in dry savanna is closely linked to the precipitation cycle: N is stored in the soil during the long dry season, and released to the atmosphere during the wet season (almost at the beginning) in the form of NO and NH₃, and further wet and dry deposited in the form of NH₃, HNO₃, NO₂, NH₄⁺ and NO₃⁻. Wet and dry deposition are mainly associated to biomass burning, domestic fires, biogenic NO emissions and NH₃ volatilization. In wet savanna the moisture content in soils is less variable because the rainfall amount is more important, and dry deposition is mostly influenced by biomass burning emissions. Wet

BGD

8, 7221–7256, 2011

Nitrogen compounds emission and deposition in West Africa

C. Delon et al.

Title Page

Abstract

Introduction

Conclusions

References

Tables

Figures

⏪

⏩

◀

▶

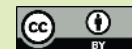
Back

Close

Full Screen / Esc

Printer-friendly Version

Interactive Discussion



deposition increases along the rainfall gradient from Agoufou to Lamto, mainly due to the quantity of rainfall. Fluxes are linked to the rainfall (in occurrence and quantity), and indirectly to the growing of the vegetation, through the N cycle in soils and in the atmosphere. It is therefore crucial in this part of the world to correctly represent the amount and occurrence of rain to impulse the right emissions and explain the subsequent deposition processes. No obvious tendency could have been assessed between the rainfall variability from year to year and the corresponding variability in N deposition and emission loads. Rainfall interannual variability has been evaluated to be 15% at the most, whereas total emission flux inter annual variability is maximum 18% (taking into account variable fluxes only), dry deposition flux variability ranges between 15 and 28%, and wet deposition variability is around 20% for every site. The short period of the study (6 years only), and above all the fact that the major contribution in the emission budget is held in constant fluxes (NH_3 volatilization), prevented to find a common tendency between the quantity of rainfall and the magnitude in emission and deposition fluxes across the years. Total budget gives emission and deposition loads between 6 and 11 $\text{kgNha}^{-1}\text{yr}^{-1}$, dominated by NH_3 whatever the type of ecosystem. Total emission and deposition fluxes are in the same range whatever the site, but the contribution of each emission source and each deposition process is different between dry and wet savanna. This study has allowed a comparison between emission and deposition processes responsible for N load in the atmosphere in two different types of ecosystems of west Africa, in regions where few data are available.



The publication of this article is financed by CNRS-INSU.

Nitrogen compounds emission and deposition in West Africa

C. Delon et al.

Title Page

Abstract

Introduction

Conclusions

References

Tables

Figures



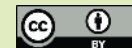
Back

Close

Full Screen / Esc

Printer-friendly Version

Interactive Discussion



References

- Adon, M., Galy-Lacaux, C., Yoboué, V., Delon, C., Lacaux, J. P., Castera, P., Gardrat, E., Pienaar, J., Al Ourabi, H., Laouali, D., Diop, B., Sigha-Nkamdjou, L., Akpo, A., Tathy, J. P., Lavenu, F., and Mougín, E.: Long term measurements of sulfur dioxide, nitrogen dioxide, ammonia, nitric acid and ozone in Africa using passive samplers, *Atmos. Chem. Phys.*, 10, 7467–7487, doi:10.5194/acp-10-7467-2010, 2010. 7225, 7228, 7229, 7231
- Andreae, M. O. and Merlet, P.: Emission of trace gases and aerosols from biomass burning, *Global Biogeochem. Cy.*, 15, 955–966, 2001. 7226, 7227
- Assamoi, E. M. and Liousse, C.: A new inventory for two-wheel vehicle emissions in West Africa for 2002, *Atm. Env.* 44, 3985–3996, 2010. 7227
- Barger, N. N., Belnap, J., Ojima, D. S., and Mosier, A.: NO gas loss from biologically crusted soils in Canyonlands National Park, Utah, *Biogeochemistry*, 75, 373–391, 2005. 7228
- Barnes, D. F., Krutilla, K., and Hyde, W.: The urban energy transition: Energy, poverty, and the environment in the developing world, draft report, World Bank, Washington, D. C., 2001. 7226
- Boone, A., De Rosnay, P., Balsamo, G., Beljaars, A., Chopin, F., Decharme, B., Delire, C., Ducharne, A., Gascoin, S., Grippa, M., Guichard, F., Gusev, Y., Harris, P., Jarlan, L., Kergoat, L., Mougín, E., Nasonova, O., Norgaard, A., Orgeval, T., Ottl, C., Pocard-Leclercq, I., Polcher, J., Sandholt, I., Saux-Picart, S., Taylor, C., and Xue, Y.: The AMMA Land Surface Model Intercomparison Project (ALMIP), *Bull. Amer. Meteor. Soc.*, 1865–1880, 2009. 7228
- Bouwman, A. F., Lee, D. S., Asman, W. A. H., Dentener, F. J., Van Der Hoek, K. W., and Olivier, J. G. J.: A Global High-Resolution Emission Inventory for Ammonia, *Global Biogeochem. Cy.*, 11(4), 561–587, 1997. 7223, 7225, 7228
- Butterbach-Bahl, K., Stange, F., Papen, H., and Li, C.: Regional inventory of nitric oxide and nitrous oxide emissions for forest soils of southeast Germany using the biogeochemical model PnET-N-DNDC, *J. Geophys. Res.* 106, 34155–34166, 2001. 7223
- Cardenas, L., Rondon, A., Johansson, C., and Sanhueza, E.: Effects of the soil moisture, temperature, and N-nutrient in the NO emissions from acidic tropical savannah soils under dry and wet season conditions, *J. Geophys. Res.*, 14783–14790, 1993. 7225
- Coetsee, C., Bond, W. J., and February, E. C.: Frequent fire affects soil nitrogen and carbon in an African savanna by changing woody cover, *Oecologia*, 162, 1027–1034, 2010. 7235
- Davidson, E. A., Vitousek, P. M., Matson, P. A., Riley, R., Garca-Mendez, G., and Maass, J. M.:

Nitrogen compounds emission and deposition in West Africa

C. Delon et al.

Title Page

Abstract

Introduction

Conclusions

References

Tables

Figures

⏪

⏩

◀

▶

Back

Close

Full Screen / Esc

Printer-friendly Version

Interactive Discussion



Nitrogen compounds emission and deposition in West Africa

C. Delon et al.

Title Page

Abstract

Introduction

Conclusions

References

Tables

Figures

◀

▶

◀

▶

Back

Close

Full Screen / Esc

Printer-friendly Version

Interactive Discussion



Soil emissions of nitric oxide in a seasonally dry tropical forest of Mexico, *J. Geophys. Res.*, 96, 439–445, 1991. 7227

Davidson, E. A., Matson, P. A., Vitousek, P. M., Riley, R., Dunkin, K., Garca-Mendez, G., and Maass, J. M.: Processes regulating soil emissions of NO and N₂O in a seasonally dry tropical forest, *Ecology*, 74, 130–139, 1993. 7227, 7228

Delmas, R. A., Loudjani, P., Podiare, A., and Menaut, J. C.: Biomass burning in Africa: An assessment of annually burnt biomass, in: *Global Biomass burning*, edited by: Levine, J. S., 126–133, MIT Press, Cambridge, 1991. 7225

Delmas, R. A., Lacaux, J. P., Menaut, J. C., Abbadie, L., LeRoux, X., Helas, G., and Lobert, J.: Nitrogen compound emission from biomass burning in tropical African savanna FOS/DECAFE 1991 Experiment (Lamto, Ivory Coast), *J. Atmos. Chem.*, 22, 175–193, 1995. 7225

Delon, C., Serça, D., Boissard, C., Dupont, R., Dutot, A., Laville, de Rosnay, P., and Delmas, R.: Soil NO emissions modelling using artificial neural network, *Tellus B*, 59B, 502–513, 2007. 7223, 7227

Delon, C., Reeves, C. E., Stewart, D. J., Serça, D., Dupont, R., Mari, C., Chaboureau, J.-P., and Tulet, P.: Biogenic nitrogen oxide emissions from soils - impact on NO_x and ozone over West Africa during AMMA (African Monsoon Multidisciplinary Experiment): modelling study, *Atmos. Chem. Phys.*, 8, 2351–2363, doi:10.5194/acp-8-2351-2008, 2008. 7223, 7227

Delon, C., Galy-Lacaux, C., Boone, A., Liousse, C., Serça, D., Adon, M., Diop, B., Akpo, A., Lavenu, F., Mouglin, E., and Timouk, F.: Atmospheric nitrogen budget in Sahelian dry savannas, *Atmos. Chem. Phys.*, 10, 2691–2708, doi:10.5194/acp-10-2691-2010, 2010. 7224, 7226, 7227, 7231

de Montalembert, M. R. and Clement, J.: Fuelwood supplies in the developing countries, *FAO For. Pap.* 42, Food and Agric. Org., Rome, 1983. 7226

Duncan, B. N., Martin, R. V., Staudt, A. C., Yevich, R., and Logan, J. A.: Interannual and seasonal variability of biomass burning emissions constrained by satellite observations, *J. Geophys. Res.*, 108, 4100, doi:10.1029/2002JD002378, 2003. 7227

Feig, G. T., Mamtimin, B., and Meixner, F. X.: Soil biogenic emissions of nitric oxide from a semi-arid savanna in South Africa, *Biogeosciences*, 5, 1723–1738, doi:10.5194/bg-5-1723-2008, 2008. 7225

Flechard, C. R., Nemitz, E., Smith, R. I., Fowler, D., Vermeulen, A. T., Bleeker, A., Erisman, J. W., Simpson, D., Zhang, L., Tang, Y. S., and Sutton, M. A.: Dry deposition of reactive ni-

- trogen to European ecosystems: a comparison of inferential models across the NitroEurope network, *Atmos. Chem. Phys.*, 11, 2703–2728, doi:10.5194/acp-11-2703-2011, 2011. 7230
- Galloway, J. N., Townsend, A. R., Erisman, J. W., Bekunda, M., Cai, Z., Freney, J. R., Martinelli, L. A., Seitzinger, S. P., and Sutton, M. A.: Transformation of the Nitrogen Cycle: Recent Trends, Questions, and Potential Solutions, *Science*, 320, 889–892, 2008. 7224
- 5 Galy-Lacaux, C. and Modi, A. I.: Precipitation chemistry in the Sahelian savanna in Niger, Africa, *J. Atmos. Chem.*, 30, 319–343, 1998. 7225, 7240
- Galy-Lacaux, C., Laouali, D., Descroix, L., Gobron, N., and Lioussé, C.: Long term precipitation chemistry and wet deposition in a remote dry savanna site in Africa (Niger), *Atmos. Chem. Phys.*, 9, 1579–1595, doi:10.5194/acp-9-1579-2009, 2009. 7231, 7234, 7240
- 10 Hanson, P. J. and Lindberg, S. E.: Dry deposition of reactive nitrogen compounds: a review of leaf, canopy and non-foliar measurements, *Atmos. Environ.*, 25A, 8, 1615–1634, 1991.
- Hartley, A. E. and Schlesinger, W. H.: Environmental controls on nitric oxide emission from northern Chihuahuan desert soils, *Biogeochemistry*, 50, 279–300, 2000. 7227
- 15 Hiernaux, P. and Turner, M. D.: The influence of farmer and pastoralism management practices on desertification processes in the Sahel, in: *Global desertification: do humans cause deserts?*, edited by: Reynolds, J. F. and Stafford Smith, D. M., Smith Dahlem University Press, Berlin, 135–148, 2002. 7229
- Hiernaux, P., Fernandez-Rivera, S., Schlecht, E., Turner, M. D., and Williams, T. O.: Livestock-mediated nutrient transfers in Sahelian agro-ecosystems, in: *renard*, edited by: Neef, G. A., Becker, K., and Von Oppen, M., Soil fertility management in West African land use systems, Niamey, Niger, 4-8.03.97, Margraf Verlag, Weikersheim, Germany, 339–347, 1998. 7229
- 20 Jaeglé, L., Martin, R. V., Chance, K., Steinberger, L., Kurosui, T. P., Jacob, D. J., Modi, A. I., Yoboué, V., Sigha-Nkamdjou, L., and Galy-Lacaux, C.: Satellite mapping of rain-induced nitric oxide emissions from soils, *J. Geophys. Res.*, 109, D21310, doi:10.1029/2004JD004787, 2004. 7227
- 25 Junker, C. and Lioussé, C.: A global emission inventory of carbonaceous aerosol from historic records of fossil fuel and biofuel consumption for the period 1860–1997, *Atmos. Chem. Phys.*, 8, 1195–1207, 2008, <http://www.atmos-chem-phys.net/8/1195/2008/>. 7227
- 30 Le Roux, X., Abbadie, L., Lensi, R., and Serça, D.: Emission of nitrogen monoxide from African tropical ecosystems: Control of emission by soil characteristics in humid and dry savannas of West Africa, *J. Geophys. Res.*, 100, 23133–23142, 1995. 7234

Nitrogen compounds emission and deposition in West Africa

C. Delon et al.

Title Page

Abstract

Introduction

Conclusions

References

Tables

Figures

◀

▶

◀

▶

Back

Close

Full Screen / Esc

Printer-friendly Version

Interactive Discussion



- Lioussé, C., Guillaume, B., Grégoire, J. M., Mallet, M., Galy, C., Pont, V., Akpo, A., Bedou, M., Castéra, P., Dungall, L., Gardrat, E., Granier, C., Konaré, A., Malavelle, F., Mariscal, A., Mieville, A., Rosset, R., Serça, D., Solmon, F., Tummon, F., Assamoi, E., Yoboué, V., and Van Velthoven, P.: Updated African biomass burning emission inventories in the framework of the AMMA-IDAF program, with an evaluation of combustion aerosols, *Atmos. Chem. Phys.*, 10, 9631–9646, 2010, <http://www.atmos-chem-phys.net/10/9631/2010/>. 7226, 7236
- Mari, C. H., Cailley, G., Corre, L., Saunois, M., Attié, J. L., Thouret, V., and Stohl, A.: Tracing biomass burning plumes from the Southern Hemisphere during the AMMA 2006 wet season experiment, *Atmos. Chem. Phys.*, 8, 3951–3961, doi:10.5194/acp-8-3951-2008, 2008. 7226
- Martin, R. E., Scholes, M. C., Mosier, A. R., Ojima, D. S., Holland, E. A., and Parton, W. J.: Controls on annual emissions of nitric oxide from soils of the Colorado shortgrass steppe, *Global Biogeochem. Cy.*, 12, 81–91, 1998. 7227
- McCalley, C. K. and Sparks, J. P.: Controls over nitric oxide and ammonia emissions from Mojave Desert soils, *Oecologia*, 156, 871–881, 2008. 7228
- Meixner, F. X., Fickinger, T., Marufu, L., Serça, D., Nathaus, F. J., Makina, E., Mukurumbira, L., and Andreae, M. O.: Preliminary results on nitric oxide emission from a southern African savanna ecosystem, *Nutr. Cycling Agroecosyst.*, 48, 123–138, 1997. 7225
- Menaut, J. C., Abbadie, L., and Vitousek, P. M.: Nutrient and organic matter dynamics in tropical ecosystems, in: *Fire in the Environment: The Ecological, Atmospheric, and Climatic Importance of Vegetation Fires*, edited by: Crutzen, P. J. and Goldammer, J. G., 219–230, John Wiley, New York, 1993. 7235
- Miller, A. E., Schimel, J. P., Meixner, T., Sickman, J. O., and Melack, J. M.: Episodic rewetting enhances carbon and nitrogen release from chaparral soils, *Soil Biol. Biochem.*, 37, 2195–2204, 2004. 7234
- Mosier, A., Kroeze, C., Nevison, C., Oenema, O., Seitzinger, S., and van Cleemput, O.: Closing the global N₂O budget: nitrous oxide emissions through the agricultural nitrogen cycle, *Nutr. Cy. Agroecosys.*, 52, 225–248, 1998. 7228
- Mougin, E., Hiernaux, P., Kergoat, L., Grippa, M., De Rosnay, P., Timouk, F., Le Dantec, V., Demarez, V., Arjounin, M., Lavenu, F., Soumaguel, N., Ceschia, E., Mougénot, B., Baup, F., Frappart, F., Frison, P. L., Gardelle, J., Gruhier, C., Jarlan, L., Mangiarotti, S., Sanou, B., Tracol, Y., Guichard, F., Trichon, V., Diarra, L., Soumaré, A., Koité, M., Dembélé, F., Lloyd, C., Hanan, N. P., Damesin, C., Delon, C., Serça, D., Galy-Lacaux, C., Seghiéri, J., Becerra,

Nitrogen compounds emission and deposition in West Africa

C. Delon et al.

Title Page

Abstract

Introduction

Conclusions

References

Tables

Figures

◀

▶

◀

▶

Back

Close

Full Screen / Esc

Printer-friendly Version

Interactive Discussion



Nitrogen compounds emission and deposition in West Africa

C. Delon et al.

[Title Page](#)
[Abstract](#)
[Introduction](#)
[Conclusions](#)
[References](#)
[Tables](#)
[Figures](#)
[⏪](#)
[⏩](#)
[◀](#)
[▶](#)
[Back](#)
[Close](#)
[Full Screen / Esc](#)
[Printer-friendly Version](#)
[Interactive Discussion](#)


- S., Dia, H., Gangneron, F., and Mazzega, P.: The AMMA-CATCH Gourma observatory site in Mali: Relating climatic variations to changes in vegetation, surface hydrology, fluxes and natural resources, *J. Hydrol., AMMA-CATCH Special issue*, 2009. 7225, 7237
- 5 Munger, J. W., Fan, S.-M., Bakwin, P. S., Goulden, M. L., Goldstein, A. H. Colman, A. S., and Wofsy, S. C.: Regional budgets for nitrogen oxides from continental sources: Variations of rates for oxidation and deposition with season and distance from source regions, *J. Geophys. Res.*, 103(D7), 8355–8368, 1998. 7241
- Munro, P. E.: Inhibition of nitrifiers by grass root extracts., *J. Appl.E col.*, 3, 231–238, 1966. 7234
- 10 Noilhan, J. and Mahfouf, J.-F.: The ISBA land surface parameterization scheme, *Glob. Planet. Change*, 13, 145–159, 1996. 7227
- Poth, M., Anderson, I. C., Miranda, H. S., Miranda, A. C., and Riggan, P. J.: The magnitude and persistence of soil NO, N₂O, CH₄, and CO₂ fluxes from burned tropical savanna in Brazil, *Global Biogeochem. Cy.*, 9, 503–513, 1995. 7225
- 15 Sauvage, B., Thouret, V., Cammas, J.-P., Brioude, J., Nedelec, P., and Mari, C.: Meridional ozone gradients in the African upper troposphere, *Geophys. Res. Lett.* 34(3), 03817, doi:10.1029/2006GL028542, 2007. 7226
- Schaeffer, S. M., Billings, S. A., and Evans, R. D.: Responses of soil nitrogen dynamics in a Mojave desert ecosystem to manipulations in soil carbon and nitrogen availability, *Oecologia*, 20 134, 547–553, 2003. 7225
- Schlecht, E. and Hiernaux, P.: Beyond adding up inputs and outputs: process assessment and upscaling in modelling nutrient flows, *Nutr. Cy. Agroecosys.*, 70, 303–319, 2004. 7228, 7229
- Scholes, M. C., Martin, R., Scholes, R. J., Parsons, D., and Winsted, E.: NO and N₂O emissions from savanna soils following the first simulated rains of the season, *Nutr. Cycl. Agroecosyst.*, 25 48, 115–122, 1997. 7225, 7227
- Serça, D., Delmas, R., Jambert, C., and Labroue, L.: Emissions of nitrogen oxides from equatorial rain forest in central Africa: Origin and regulation of NO emission from soils, *TellusB*, 46, 143–254, 1994. 7225
- Serça, D., Delmas, R., Le Roux, X., Parsons, D. A. B., Scholes, M. C., Abbadie, L., Lensi, R., Ronce, O., and Labroue, L.: Comparison of nitrogen monoxide emissions from several African tropical ecosystems and influence of season and fire, *Global Biogeochem. Cy.*, 12, 30 637–651, 1998. 7225, 7233, 7234, 7235
- Steinkamp, J. and Lawrence, M. G.: Improvement and evaluation of simulated global biogenic

soil NO emissions in an AC-GCM, *Atmos. Chem. Phys.*, 11, 6063–6082, doi:10.5194/acp-11-6063-2011, 2011.

Stewart, D. J., Taylor, C. M., Reeves, C. E., and McQuaid, J. B.: Biogenic nitrogen oxide emissions from soils: impact on NO_x and ozone over west Africa during AMMA (African Monsoon Multidisciplinary Analysis): observational study, *Atmos. Chem. Phys.*, 8, 2285–2297, doi:10.5194/acp-8-2285-2008, 2008. 7227

Stohl, A., Williams, E., Wotawa, G., and Kromp-Kolb, H.: A European inventory of soil nitric oxide emissions and the effect of these emissions on the photochemical formation of ozone, *Atmos. Environ.*, 30(22), 3741–3755, 1996. 7223

Sutton, M. A., Nemitz, E., Erisman, J. W., Beier, C., Butterbach Bahl, K., Cellier, P., de Vries, W., Cotrufo, F., Skiba, U., Di Marco, C., Jones, S., Laville, P., Soussana, J. F., Loubet, B., Twigg, M., Famulari, D., Whitehead, J., Gallagher, M. W., Neftel, A., Flechard, C. R., Herrmann, B., Calanca, P. L., Schjoerring, J. K., Daemmgen, U., Horvath, L., Tang, Y. S., Emmett, B. A., Tietema, A., Penuelas, J., Kesik, M., Brueggemann, N., Pilegaard, K., Vesala, T., Campbell, C. L., Olesen, J. E., Dragosits, U., Theobald, M. R., Levy, P., Mobbs, D. C., Milne, R., Viovy, N., Vuichard, N., Smith, J. U., Smith, P., Bergamaschi, P., Fowler, D., Reis, S.: Challenges in quantifying biosphere-atmosphere exchange of nitrogen species, *Env. Poll.*, 150, 125–139, 2007. 7223

Thouret, V., Saunois, M., Minga, A., Mariscal, A., Sauvage, B., Solete, A., Agbangla, D., Nédélec, P., Mari, C., Reeves, C. E., and Schlager, H.: An overview of two years of ozone radio soundings over Cotonou as part of AMMA, *Atmos. Chem. Phys.*, 9, 6157–6174, doi:10.5194/acp-9-6157-2009, 2009. 7226

van der Werf, G. R., Randerson, J. T., Giglio, L., Collatz, G. J., Kasibhatla, P. S., and Arellano Jr., A. F.: Interannual variability in global biomass burning emissions from 1997 to 2004, *Atmos. Chem. Phys.*, 6, 3423–3441, doi:10.5194/acp-6-3423-2006, 2006. 7236

Wesely, M. L.: Parameterization of surface resistances to gaseous dry deposition in regional-scale numerical models, *Atmos. Environ.*, 23, 1293–1304, 1989. 7223, 7229

Williams, C. A., Hanan, N. P., Baker, I., Collatz, G. J., Berry, J., and Denning, A. S.: Interannual variability of photosynthesis across Africa and its attribution, *J. Geophys. Res.*, 113, G04015, doi:10.1029/2008JG000718, 2008. 7237

Wolff, V., Trebs, I., Foken, T., and Meixner, F. X.: Exchange of reactive nitrogen compounds: concentrations and fluxes of total ammonium and total nitrate above a spruce canopy, *Bio-geosciences*, 7, 1729–1744, doi:10.5194/bg-7-1729-2010, 2010. 7223

BGD

8, 7221–7256, 2011

Nitrogen compounds emission and deposition in West Africa

C. Delon et al.

Title Page

Abstract

Introduction

Conclusions

References

Tables

Figures

⏪

⏩

◀

▶

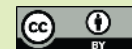
Back

Close

Full Screen / Esc

Printer-friendly Version

Interactive Discussion



Nitrogen compounds emission and deposition in West Africa

C. Delon et al.

[Title Page](#)[Abstract](#)[Introduction](#)[Conclusions](#)[References](#)[Tables](#)[Figures](#)[⏪](#)[⏩](#)[◀](#)[▶](#)[Back](#)[Close](#)[Full Screen / Esc](#)[Printer-friendly Version](#)[Interactive Discussion](#)

Yevich, R. and Logan, J. A.: An assessment of biofuel use and burning of agricultural waste in the developing world, *Global Biogeochem. Cy.*, 17, 4:1095, doi:10.1029/2002GB001952, 2003. 7227

Yienger, J. J. and Levy II, H.: Empirical model of global soil biogenic NO_x emissions, *J. Geophys. Res.*, 100, 11447–11464, 1995. 7223

Yoboué, V., Galy-Lacaux, C., Lacaux, J. P., and Sibué, S.: Rainwater Chemistry and Wet Deposition over the Wet Savanna Ecosystem of Lamto (Côte d'Ivoire), *J. Atmos. Chem.*, 52, 117–141, 2005. 7225, 7226, 7240

Zhang, L., Brook, J. R., and Vet, R.: A revised parameterization for gaseous dry deposition in air-quality models, *Atmos. Chem. Phys.*, 3, 2067–2082, doi:10.5194/acp-3-2067-2003, 2003. 7223, 7229, 7230

Zhang, L., Wright, L. P., and Asman, W. A. H.: Bi directional air surface exchange of atmospheric ammonia: A review of measurements and a development of a big leaf model for applications in regional scale air quality models, *J. of Geophys. Res.*, 115, D20310, doi:10.1029/2009JD013589, 2010. 7231

Nitrogen compounds emission and deposition in West Africa

C. Delon et al.

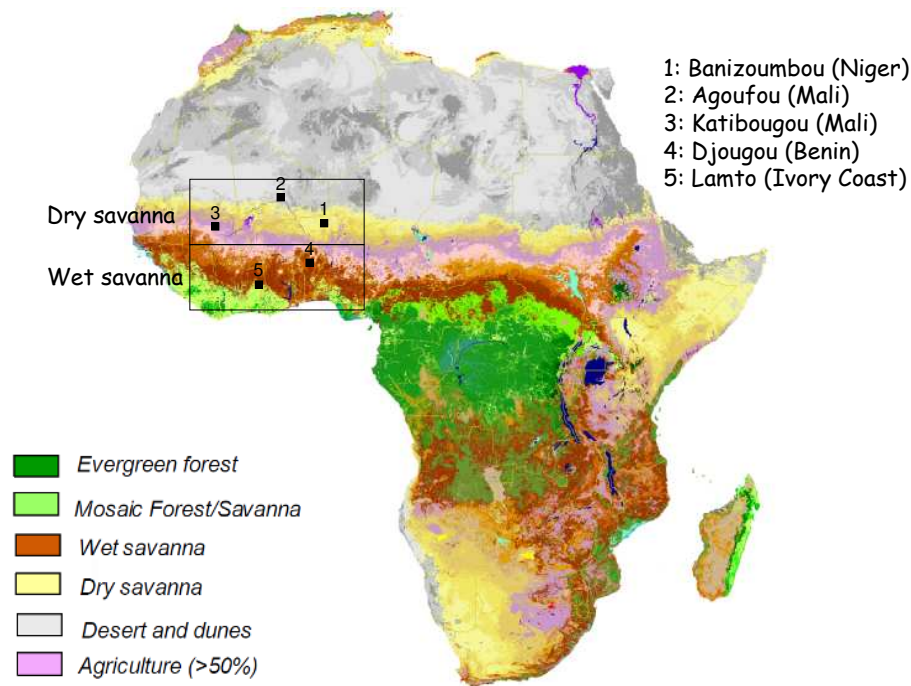


Fig. 1. Location of the stations involved in the IDAF network. Only the five first stations are included in the present study.

Title Page	
Abstract	Introduction
Conclusions	References
Tables	Figures
⏪	⏩
◀	▶
Back	Close
Full Screen / Esc	
Printer-friendly Version	
Interactive Discussion	

Nitrogen compounds emission and deposition in West Africa

C. Delon et al.

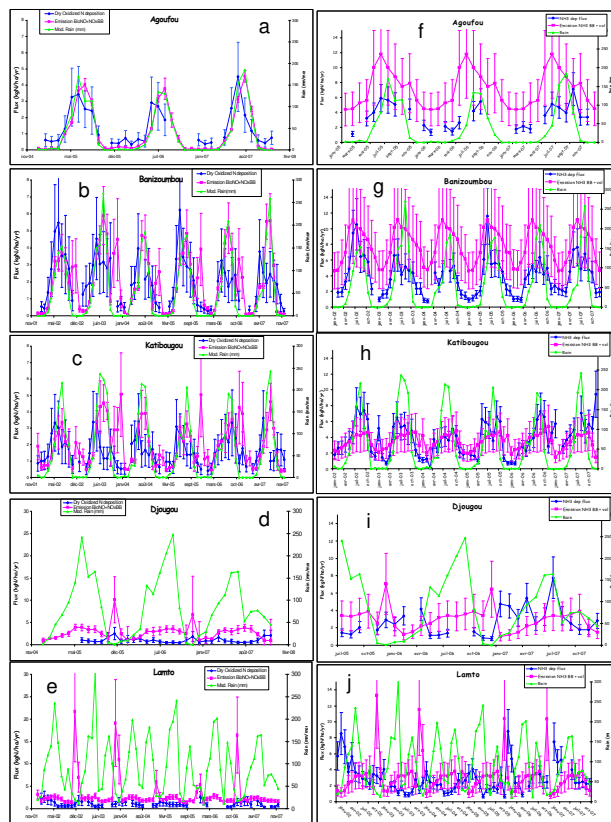


Fig. 2. Left: Interannual evolution of oxidised N compounds (Biogenic NO from soils + NO_x emission from biomass burning in pink, NO₂ + HNO₃ dry deposition in blue, rainfall in green) and Right: Interannual evolution of reduced N compounds (NH₃ volatilization + NH₃ emission from biomass burning in pink, NH₃ dry deposition in blue, rainfall in green), in Agoufou (**a, f**), Banizoumbou (**b, g**), Katibougou (**c, h**), Djougou (**d, i**), and Lamto (**e, j**).

Title Page

Abstract

Introduction

Conclusions

References

Tables

Figures

⏪

⏩

◀

▶

Back

Close

Full Screen / Esc

Printer-friendly Version

Interactive Discussion

Nitrogen compounds
emission and
deposition in West
Africa

C. Delon et al.

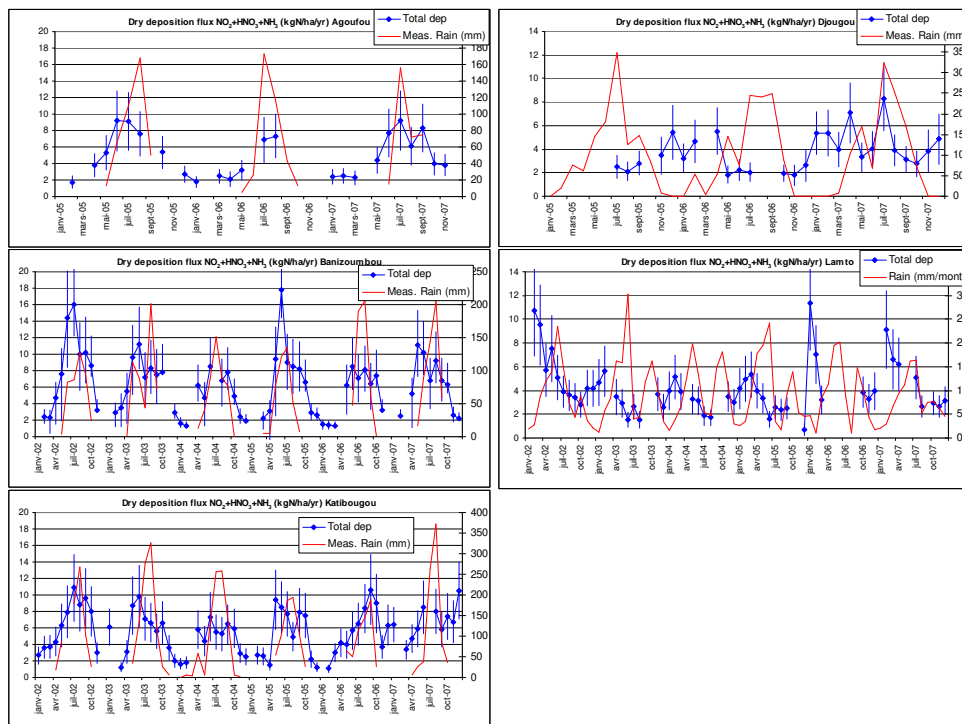


Fig. 3. Total dry deposition flux ($\text{NH}_3 + \text{NO}_2 + \text{HNO}_3$) in $\text{kgNha}^{-1}\text{yr}^{-1}$ and measured rain (mmmonth^{-1}) at Agoufou, Banizoumbou, Katibougou, Djougou and Lamto.

Discussion Paper | Discussion Paper | Discussion Paper | Discussion Paper

Title Page

Abstract

Introduction

Conclusions

References

Tables

Figures

⏪

⏩

◀

▶

Back

Close

Full Screen / Esc

Printer-friendly Version

Interactive Discussion



Nitrogen compounds emission and deposition in West Africa

C. Delon et al.

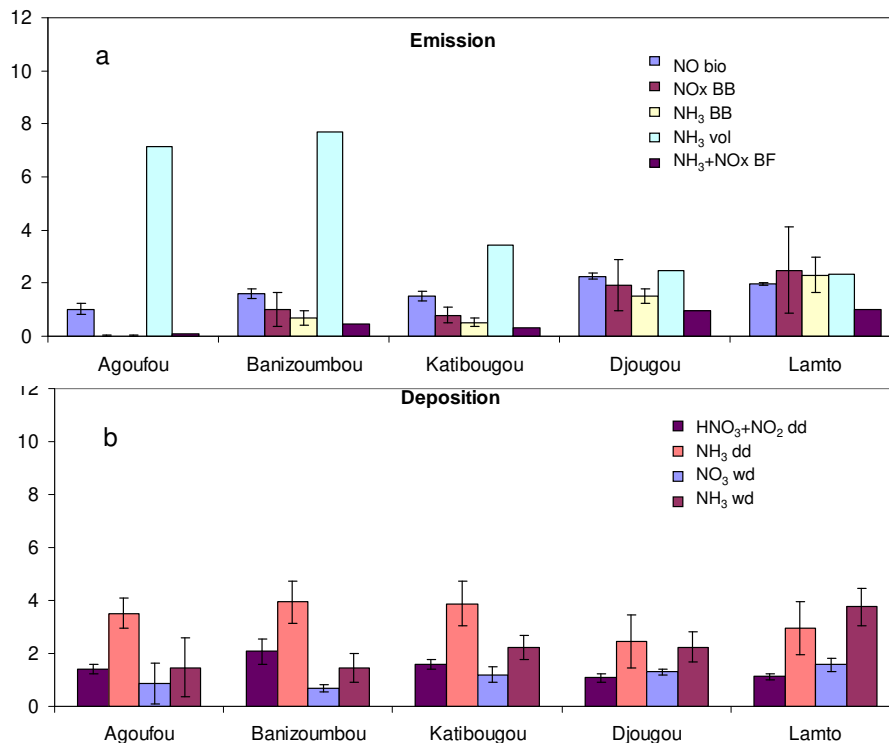


Fig. 4. Emission (a) and deposition (b) components of the atmospheric N budget in annual mean in kgNha⁻¹yr⁻¹ for the five IDAF stations for the years 2002 to 2007. bio = biogenic, BB = biomass burning, wd = wet deposition, dd = dry deposition, vol = volatilization, BF = bio-fuel. Error bars represent interannual variability. No error bars appear for NH₃ volatilization and BF because of no interannual variability available for these data.

Nitrogen compounds emission and deposition in West Africa

C. Delon et al.

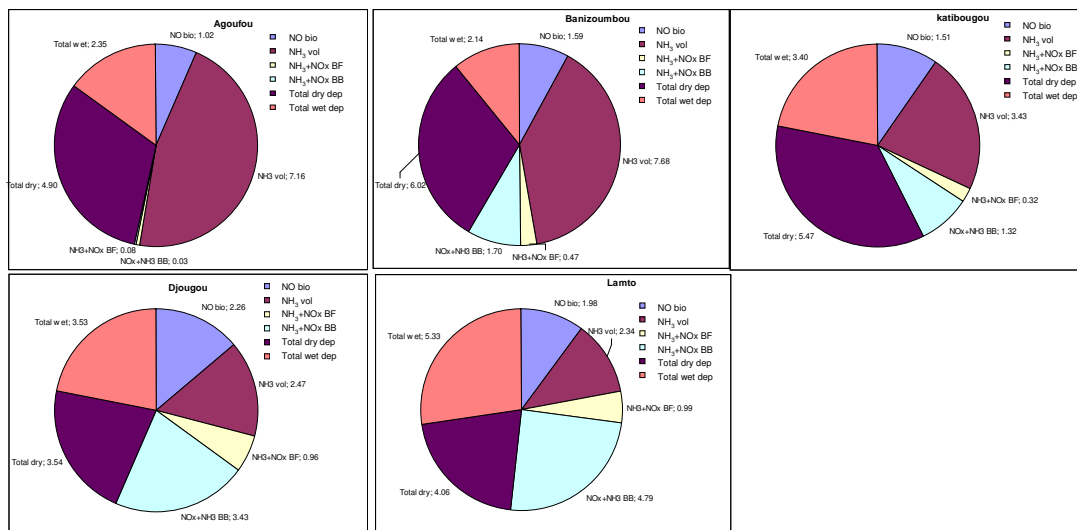


Fig. 5. Contribution of emission and deposition N fluxes in kgNha⁻¹yr⁻¹ for five stations in dry and wet savanna ecosystems. Relative uncertainties are specified in the text

Title Page

Abstract

Introduction

Conclusions

References

Tables

Figures

⏪

⏩

◀

▶

Back

Close

Full Screen / Esc

Printer-friendly Version

Interactive Discussion

Nitrogen compounds emission and deposition in West Africa

C. Delon et al.

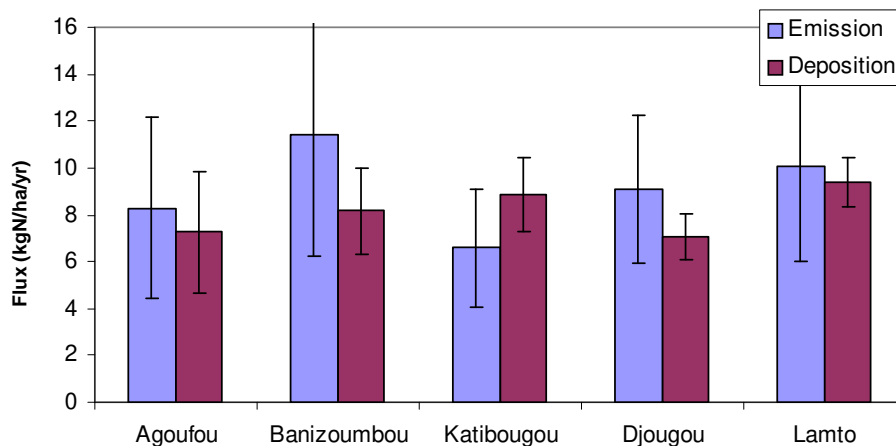


Fig. 6. Emission and deposition N budget in $\text{kgNha}^{-1}\text{yr}^{-1}$ for five stations in dry and wet savanna ecosystems. Error bars represent the total uncertainty of fluxes.

[Title Page](#)[Abstract](#)[Introduction](#)[Conclusions](#)[References](#)[Tables](#)[Figures](#)[⏪](#)[⏩](#)[◀](#)[▶](#)[Back](#)[Close](#)[Full Screen / Esc](#)[Printer-friendly Version](#)[Interactive Discussion](#)