



**HAL**  
open science

## Analogical proportions in a lattice of sets of alignments built on the common subwords in a finite language

Laurent Miclet, Nelly Barbot, Baptiste Jeudy

### ► To cite this version:

Laurent Miclet, Nelly Barbot, Baptiste Jeudy. Analogical proportions in a lattice of sets of alignments built on the common subwords in a finite language. 1st International Workshop on Similarity and Analogy-based methods in AI (SAMAI), Aug 2012, Montpellier, France. pp.25-31. hal-00760722

**HAL Id: hal-00760722**

**<https://hal.science/hal-00760722>**

Submitted on 4 Dec 2012

**HAL** is a multi-disciplinary open access archive for the deposit and dissemination of scientific research documents, whether they are published or not. The documents may come from teaching and research institutions in France or abroad, or from public or private research centers.

L'archive ouverte pluridisciplinaire **HAL**, est destinée au dépôt et à la diffusion de documents scientifiques de niveau recherche, publiés ou non, émanant des établissements d'enseignement et de recherche français ou étrangers, des laboratoires publics ou privés.

# Analogical proportions in a lattice of sets of alignments built on the common subwords in a finite language

Laurent Miclet<sup>1</sup> and Nelly Barbot<sup>2</sup> and Baptiste Jeudy<sup>3</sup>

**Abstract.** We define the locally maximal subwords and locally minimal superwords common to a finite set of words. We also define the corresponding sets of alignments. We give a partial order relation between such sets of alignments, as well as two operations between them. We show that the constructed family of sets of alignments has the lattice structure. The study of analogical proportion in lattices gives hints to use this structure as a machine learning basis, aiming at inducing a generalization of the set of words.

*Keywords:* Locally maximal subwords, alignments, algebraic structure of sets of alignments on a set of words (lattice), analogical proportion.

## 1 Introduction

Much has been done on finding maximal subwords and minimal superwords to a set of words, when the order relation is based on the length of words. We are interested in this paper in the same problem, but for the finer order relation based on the definition of a subword. Is there a manner to characterize the set of maximal subwords and that of minimal superwords, given a finite set  $U$  of words, according to this relation? More than that, is there an algebraic relation between all these sets of subwords and superwords of  $U$ ? An answer to these questions would allow to give a precise definition to what the words of  $U$  share, and how this common core is organised.

The firsts parts of this paper gives a partial answer to these points. We define in section 2 a particular case of the notion of alignment, which will be useful for our construction. Actually, in section 3, we define two operations and an order relation on sets of alignments that leads to the construction of a lattice.

We are also interested in how this structure could be analysed in terms of analogical proportions, which could be used in machine learning. Since we start from a finite set of words, the convenient machine learning framework seems to be grammatical inference (from a positive set of positive samples, in our case). It seems that the lattice structure is particularly adapted to learning by analogy, since some natural analogical proportions can be observed in such a structure. We give in section 4 some hints on these points.

## 2 Maximal subword, minimal superword, alignment

### 2.1 Basics

Let  $\Sigma$  be an alphabet, *i.e.* a finite set of letters. A *word*  $u$  is a sequence  $u_1 \dots u_n$  of letters in  $\Sigma$ . The length of  $u$ , denoted  $|u|$  is  $n$ . The empty word, of null length, is  $\epsilon$ . A *language* is a set of words. A *subword* of a word  $u$  is a word obtained by deleting letters of  $u$  at some (non necessarily adjacent) positions<sup>4</sup> in  $u$ . We denote  $u \bullet v$  the *shuffle* of the two words  $u$  and  $v$ .

In  $\Sigma^*$ , the set of all words on  $\Sigma$ , we use the order relation  $\leq$  defined by: ( $u \leq v \Leftrightarrow u$  is a subword of  $v$ ). When  $u$  is a subword of  $v$ ,  $v$  is called a *superword*<sup>5</sup> of  $u$ . For example:  $abc \leq aabcbcd$ .

A word  $w$  is a *common subword* to  $u$  and  $v$  when  $w \leq u$  and  $w \leq v$ . The word  $w$  is a *maximal common subword* to  $u$  and  $v$  if there does not exist any other common subword  $x$  to  $u$  and  $v$  such that  $w \leq x$ . For example,  $ab$  and  $c$  are maximal common subwords to  $u = cadba$  and  $v = fagbhc$ , while  $a$  is a non maximal common subword. Defining a common maximal subword to a finite set of words is a straightforward extension.

A maximal common subword to two words and to a non empty finite set of words is defined in an analog way.

In a partially ordered set  $S$ , an *antichain* is a subset of  $S$  composed of pairwise incomparable elements. Any subset  $T$  of  $S$  can be reduced to a maximal antichain by removing from  $T$  every element of  $T$  lesser than another element of  $T$ .

### 2.2 Alignments

#### 2.2.1 Definition

**Definition 1** An alignment is a finite set of pairs  $(w, l)$  where  $w$  is a word and  $l$  a set of indices between 1 and  $|w|$ . The set  $l$  defines a subword of  $w$  denoted  $w[l]$ . Moreover, an alignment  $\mathfrak{a}$  must satisfy the following properties for all  $(w, l) \in \mathfrak{a}$  and  $(w', l') \in \mathfrak{a}$ :

1.  $w[l] = w'[l']$
2.  $(w = w') \Rightarrow (l = l')$
3.  $(w \leq w') \Rightarrow (w = w')$

The set of words on which the alignment is defined is called the *support* and is denoted  $word(\mathfrak{a}) = \{w \mid \exists l \subset \mathbb{N} \text{ with } (w, l) \in \mathfrak{a}\}$ .

<sup>4</sup> Other terms for *subword* are *subsequence* and *partial word*. A *factor*, or *substring* is a subword of  $u$  built by contiguous letters of  $u$ .

<sup>5</sup> A *superword* of  $u$ , also called a *supersequence* must not be confused with a *superstring* of  $u$ , in which the letters of  $u$  are contiguous. In other words,  $u$  is a factor (a substring) of any superstring of  $u$ . See [Gus97], pages 4, 309 and 426.

<sup>1</sup> IRISA-Dyliss, Rennes France. miclet@enssat.fr

<sup>2</sup> IRISA-Cordial, Lannion France. barbot@enssat.fr

<sup>3</sup> Université de Saint-Étienne, Laboratoire Hubert Curien. baptiste point jeudy at univ-st-etienne point fr

According to our definition<sup>6</sup>, the support is an antichain of words for  $\leq$ .

The set of indices  $l$  will be called the *position* of the indexed subword of  $w[l]$ .

In the following, an alignment will be represented by a set of words in which some letters are boxed. For each element  $(w, l)$  of the alignment, the boxed letters represent the subword  $w[l]$  (also called the boxed subword of the alignment).

For legibility, the  $n$  words can be displayed in such a manner that the corresponding letters of  $w$  in the  $n$  words are in the same column. Some blanks can be added freely to help the reading. For example:

$$a = \begin{pmatrix} \boxed{a} & & \boxed{c} & b & d & e & g \\ \boxed{a} & & \boxed{c} & & & e & \\ g & \boxed{a} & h & \boxed{c} & & d & \end{pmatrix}$$

denotes the alignment

$$a = \{(acbdeg, \{1, 2\}), (aceh, \{1, 2\}), (gahcd, \{2, 4\})\}.$$

We can write also without ambiguity:

$$a = (\boxed{a} \boxed{c} bdeg, \boxed{a} \boxed{c} eh, g \boxed{a} h \boxed{c} d).$$

### 2.2.2 Locally maximal alignments and locally maximal subwords

Generally speaking, two alignments on the same support  $W = \{w_1, \dots, w_n\}$  with the same boxed subword  $r$  can be different (having different set of indexes). We could define maximal alignments as those whose boxed letters are maximal subword of  $W$ .

However, all interesting alignments would not be maximal with this definition. Consider for example the two words  $w_1 = abcd$  and  $w_2 = dabcab$ . The complete set of common subwords is  $\{\epsilon, a, b, c, ab, ac, bc, abc, d\}$  and their set of maximal common subwords is  $\{abc, d\}$ .

But these two subwords are not sufficient to define the totality of the interesting alignments. Actually the alignment  $(\boxed{a} \boxed{b} cd, dabc \boxed{a} \boxed{b})$  is somehow "maximal" since it is not comparable to the only alignment with the boxed subword  $abc$ , namely  $(\boxed{a} \boxed{b} \boxed{c} d, d \boxed{a} \boxed{b} \boxed{c} ab)$ .

This leads to define the following notion of *locally maximal alignment* and of *locally maximal subword*.

**Definition 2** An alignment  $a = \{(w_1, l_1), \dots, (w_n, l_n)\}$  is locally maximal if there is no other alignment  $b = \{(w_1, l'_1), \dots, (w_n, l'_n)\}$  on the same support such that for all  $i$ ,  $l_i \subset l'_i$ .

Notice that the empty alignment  $\emptyset$  is locally maximal.

**Definition 3** The set of boxed subwords associated to all locally maximal alignments between a finite set of words  $W = \{w_1, \dots, w_n\}$  is called the set of locally maximal subwords to  $W$  and is denoted  $\sqcap(W)$ .

For some  $r \in \sqcap(W)$ , the set of locally maximal alignments associated to  $r$  is denoted  $A_r(W)$ .

$$\text{We also define: } A(W) = \bigcup_{r \in \sqcap(W)} A_r(W).$$

For example, let us consider  $W = \{ababc, cabd\}$ , its sets of locally maximal alignments are given by

$$A_{ab}(W) = \left\{ \begin{pmatrix} \boxed{a} \boxed{b} abc, c \boxed{a} \boxed{b} d, \\ \boxed{a} \boxed{b} a \boxed{b} c, c \boxed{a} \boxed{b} d, \\ ab \boxed{a} \boxed{b} c, c \boxed{a} \boxed{b} d \end{pmatrix} \right\}$$

$$A_c(W) = \{(\boxed{a} \boxed{b} \boxed{c}, \boxed{c} \boxed{a} \boxed{b} d)\}.$$

$$A(W) = A_{ab}(W) \cup A_c(W).$$

Then, the set of locally maximal subwords of  $W$  is

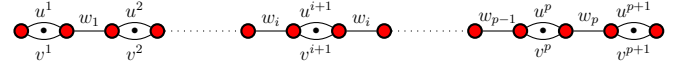
$$\sqcap(W) = \{ab, c\}$$

## 2.3 Language associated with an alignment

**Definition 4** Let  $w = w_1 \dots w_p$  be a word, locally maximal subword of two words  $u$  and  $v$  at only one position (i.e.  $|A_w(\{u, v\})| = 1$ ). Then there exists a unique set of factors of  $u$ , denoted  $(u^1, \dots, u^{p+1})$ , and a unique set of factors of  $v$ , denoted  $(v^1, \dots, v^{p+1})$ , such that  $u = u^1 w_1 \dots u^p w_p u^{p+1}$  and  $v = v^1 w_1 \dots v^p w_p v^{p+1}$ . We define  $L(A_w(\{u, v\}))$  as the following finite language:

$$L(A_w(\{u, v\})) = (u^1 \bullet v^1) w_1 (u^2 \bullet v^2), \dots, (u^p \bullet v^p) w_p (u^{p+1} \bullet v^{p+1})$$

The construction of  $L(A_w(\{u, v\}))$  is shown in Figure 1, with straightforward graphic conventions.



**Figure 1.** The construction of  $L(A_w(u, v))$  when  $|A_w(\{u, v\})| = 1$ .

If  $|A_w(\{u, v\})| > 1$ ,  $L(A_w(\{u, v\}))$  is defined as the union of all languages associated with all different positions of  $w$  as locally maximal subword of  $u$  and  $v$ . Finally,  $L(A(\{u, v\}))$  is defined as the union of the languages  $L(A_w(\{u, v\}))$ , for all  $w$  locally maximal subwords of  $u$  and  $v$ .

**Proposition 1** Let  $w$  be a locally maximal subword common to two words  $u$  and  $v$  and  $L(A_w(\{u, v\}))$  constructed as above. We have:

1. All words in  $L(A_w(\{u, v\}))$  are (non necessarily minimal) common superwords of  $u$  and  $v$ .
2. For any word  $W \in L(A_w(\{u, v\}))$ , we have<sup>7</sup>  $|W| + |w| = |u| + |v|$ .

**Proof.** We firstly give an example to show that a word of  $L(A_w(\{u, v\}))$  can be a non-minimal superword of  $u$  and  $v$ .

We take the two words  $u = abcabb$  and  $v = aabbc$ . The associated alignment  $(\boxed{a} \boxed{b} ca \boxed{b} \boxed{b}, \boxed{a} \boxed{a} \boxed{b} \boxed{b} c)$  is locally maximal. The language  $L(A_{abb}(\{u, v\}))$  contains the language  $aabcab(b \cdot c)$  and, in particular, the word  $w = abcabbc$ . The word  $w' = abcabbc$  is another superword of  $u$  and  $v$ , and  $w' \leq w$ . Thus,  $w$  is not an locally maximal superword of  $u$  and  $v$ .

Then we demonstrate the proposition.

Let us consider  $W \in L(A_w(\{u, v\}))$ . By definition of  $L(A_w(\{u, v\}))$ , there exists  $(u^1, \dots, u^{p+1})$  and  $(v^1, \dots, v^{p+1})$ , respectively sets of factors of  $u$  and  $v$ , such that the word  $W$  can be written as  $W = x^1 w_1 \dots x^p w_p x^{p+1}$  where, for every  $i \in \{1, \dots, p+1\}$ ,  $x^i \in (u^i \bullet v^i)$ .

<sup>6</sup> An alignment (regardless of the third point of our definition), is called a *trace* by Wagner and Fisher [WF74] for two words and a *threading scheme* in Maier [Mai78].

<sup>7</sup> A consequence of this assertion is : let  $LCS(u, v)$  be a longest common subword to  $u$  and  $v$  and  $SCS(u, v)$  be a shortest common superword to  $u$  and  $v$ . Then we have:  $|LCS(u, v)| + |SCS(u, v)| = |u| + |v|$ .

1. Therefore, for every  $i \in \{1, \dots, p+1\}$ ,  $x^i \geq u^i$  and  $x^i \geq v^i$ . We then have  $W \geq u^1 w_1 \dots u^p w_p u^{p+1} = u$  and  $W \geq v^1 w_1 \dots v^p w_p v^{p+1} = v$ .

2.

$$\begin{aligned} |W| &= |x^1| + |w_1| + \dots + |x^p| + |w_p| + |x^{p+1}| \\ &= |w| + \sum_{i=1}^{p+1} |x^i| = |w| + \sum_{i=1}^{p+1} (|u^i| + |v^i|) \\ &= |w| + (|u| - |w|) + (|v| - |w|) = |u| + |v| - |w|. \end{aligned}$$

□

## 2.4 Constructive algorithms

We have devised an algorithm producing a finite automaton  $\mathcal{A}_{\sqcap(\{u,v\})}$  which exactly recognizes the language  $\sqcap(\{u,v\})$ , the set of locally maximal subwords common to two words  $u$  and  $v$ , due to lack of space, we do not describe it here. It is based on the transformation of an 2-d array displaying which letters are common to two words into a finite automaton recognizing  $\sqcap(u,v)$  (see an example on figure 2(a)).

Starting from  $\mathcal{A}_{\sqcap(\{u,v\})}$ , it is then simple to produce a finite automaton that we call  $\mathcal{A}_{\sqcup(\{u,v\})}$  which exactly recognizes the language  $L(\mathcal{A}_{\sqcup(\{u,v\})})$  (also denoted  $\sqcup(\{u,v\})$ ). We display an example at figure 2(b).

## 3 Order relation and operations between alignments

In this section, we are interested in a particular family of alignments, since we want to describe what have in common the subwords and superwords of a finite set  $U$  of sentences. We will consider alignments on  $U$ , i.e. alignments with a support subset of  $U$ . Moreover, we will assume that  $U$  is an antichain according to the order relation  $\leq$ .

### 3.1 Order relation

**Definition 5 (Order on alignments on  $U$ )** Given two alignments on  $U$   $\mathfrak{a} = \{(w_1, l_1), \dots, (w_n, l_n)\}$  and  $\mathfrak{b} = \{(w'_1, l'_1), \dots, (w'_m, l'_m)\}$ , we write  $\mathfrak{a} \sqsubseteq \mathfrak{b}$  if for all  $i \in (1, n)$ , it exists  $j \in (1, m)$  such that

1.  $w_i = w'_j$
2.  $l'_j \subseteq l_i$

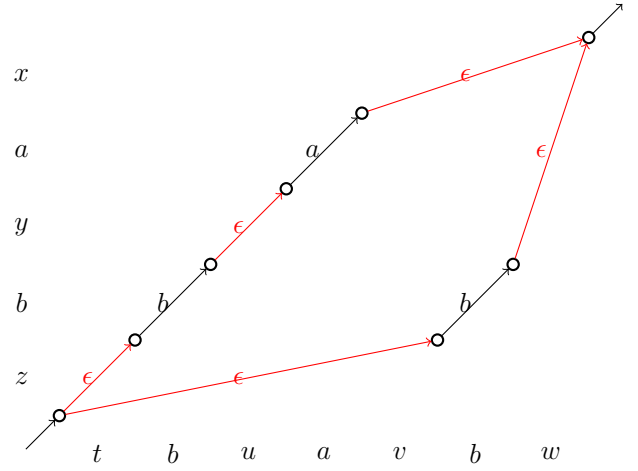
Therefore, if  $\mathfrak{a} \sqsubseteq \mathfrak{b}$ , then  $\text{word}(\mathfrak{a}) \subseteq \text{word}(\mathfrak{b})$ .

It is easy to check that  $\sqsubseteq$  is a partial order relation on the set of alignments and that the empty alignment  $\emptyset$  is smaller than every other alignment.

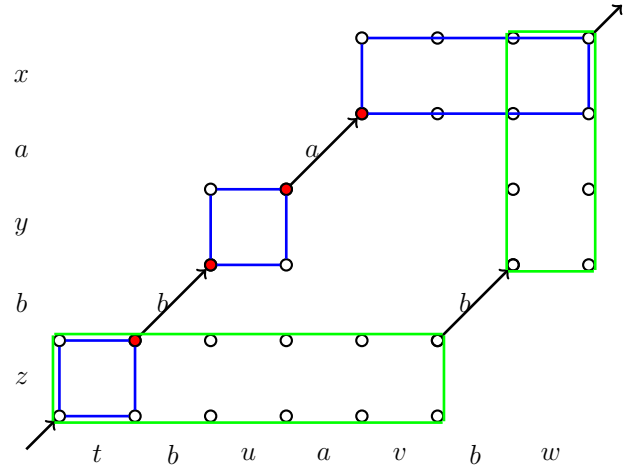
**Definition 6 (Homogeneous sets of alignments)** A set of alignments is homogeneous if it is non empty and all its elements have the same support. The family of homogeneous sets of locally maximal alignments is denoted  $\mathcal{A}_H$ .

In order to link this definition with definition 3, we can notice that, for any subset  $W$  of  $U$ ,  $A(W) \in \mathcal{A}_H$ .

**Definition 7 (Order on homogeneous sets of alignments on  $U$ )** Let  $A$  and  $B$  be two homogeneous sets of alignments. We have  $A \sqsubseteq B$  if for all  $\mathfrak{b} \in B$ , there is  $\mathfrak{a} \in A$  such that  $\mathfrak{a} \sqsubseteq \mathfrak{b}$ .



(a) An automaton which recognizes the language  $\sqcap(r,s)$ . We have  $r = zbyax$  and  $s = tbuavbw$ ;  $a$  and  $b$  are letters, while  $t, u, v, w, x, y$  and  $z$  are factors on  $\Sigma \setminus \{a, b\}$ .



(b) An automaton which recognizes  $\sqcup(r,s) = (z \bullet t)b(u \bullet y)a(vbw \bullet x) \sqcup (tbuav \bullet z)b(w \bullet yax)$ . A rectangle holds for the shuffle of the factors on its sides

**Figure 2.** Constructing the languages  $\sqcap(r,s)$  and  $\sqcup(r,s)$

**Proposition 2**  $\sqsubseteq$  is a partial order on  $\mathcal{A}_H$  and the smallest element is  $\{\emptyset\}$ .

**Proof.**

Reflexivity and transitivity are immediate. In order to check the antisymmetry, let us consider two homogeneous sets of locally maximal alignments, denoted  $A$  and  $B$ , such that:  $A \sqsubseteq B$  and  $B \sqsubseteq A$ . Since  $A$  and  $B$  are homogeneous, all alignments in  $A$  have the same support, denoted  $\text{word}(A)$ , and the same holds for  $B$ , with the support denoted  $\text{word}(B)$ . From the definition of  $\sqsubseteq$ , we easily check that  $\text{word}(A) = \text{word}(B)$ . Let us consider  $\mathfrak{b}_1 = \{(w_1, l'_1), \dots, (w_n, l'_n)\} \in B$ : since  $A \sqsubseteq B$  and  $B \sqsubseteq A$ , it exists  $\mathfrak{a} \in A$  and  $\mathfrak{b}_2 \in B$  such that  $\mathfrak{a} \sqsubseteq \mathfrak{b}_1$  and  $\mathfrak{b}_2 \sqsubseteq \mathfrak{a}$ . By transitivity, we have  $\mathfrak{b}_2 \sqsubseteq \mathfrak{b}_1$ . At last,  $\mathfrak{b}_1$  and  $\mathfrak{b}_2$  having the same support and being locally maximal, it implies that  $\mathfrak{b}_1 = \mathfrak{b}_2$  and then  $\mathfrak{a} \in B$ . Hence,  $A \subseteq B$ . Similarly, we can check that  $B \subseteq A$ .

□

### 3.2 Definition and properties of $\boxplus$

**Definition 8** Let  $a \in A_r(\{u_1, \dots, u_n\})$  and  $b \in A_s(\{v_1, \dots, v_m\})$ , where  $a = \{(u_1, l_1), \dots, (u_n, l_n)\}$  and  $b = \{(v_1, l'_1), \dots, (v_m, l'_m)\}$ . Firstly, we construct  $a + b$ , the finite set of alignments  $c = \{(w_1, L_1), \dots, (w_p, L_p)\}$  such that

1.  $\{w_1, \dots, w_p\} = \text{word}(a) \cup \text{word}(b)$
2. for all  $(i, k)$ , if  $(w_k = u_i)$  then  $(L_k \subseteq l_i)$
3. for all  $(j, k)$ , if  $(w_k = v_j)$  then  $(L_k \subseteq l'_j)$

Secondly, we denote  $a \boxplus b$  the set of minimal elements of  $a + b$  according to  $\sqsubseteq$ .

As consequence, if  $\sqcap(\{r, s\}) \neq \emptyset$ , then the boxed word in  $c \in a + b$  is a subword of  $r$  and  $s$ , else, no letter is boxed in  $c$ . In addition, if  $a$  and  $b$  contains an identical word  $u_i = v_j$  such that  $l_i \cap l'_j = \emptyset$ , no letter is then boxed in  $c$ .

The operation  $\boxplus$  is extended to homogeneous sets of alignments by the following definition.

**Definition 9** Let  $A$  and  $B$  be two homogeneous sets of alignments. We define  $A \boxplus B$  as the set of the minimal elements of  $A + B$  according to  $\sqsubseteq$  where

$$A + B = \bigcup_{\substack{b \in B \\ a \in A}} (a + b)$$

**Proposition 3** The operation  $\boxplus$  is internal to  $\mathcal{A}_H$ , commutative and idempotent.

**Proof.** Let us consider  $A \in \mathcal{A}_H$  and  $B \in \mathcal{A}_H$ .

1. All the alignments in  $A \boxplus B$  are locally maximal by definition and have the same support, namely  $\text{word}(A) \cup \text{word}(B)$ .
2. The commutativity is straightforward.
3. Let  $a$  be an element of  $A$ , it is immediate that  $a \in (a + a) \subseteq A + A$ . Moreover, since  $A \in \mathcal{A}_H$ ,  $a$  is a locally maximal alignment, and so  $a \in A \boxplus A$ . Consequently,  $A \subseteq A \boxplus A$ . Reciprocally, let  $c$  be an element of  $A \boxplus A$ . Then it exists a couple  $(a, b) \in A^2$  such that  $c \in a + b$ . Since  $A \in \mathcal{A}_H$  and  $\text{word}(c) = \text{word}(a) \cup \text{word}(b)$ ,  $a, b$  and  $c$  have the same support. Moreover, from definitions 5 and 8,  $a \sqsubseteq c$  and  $b \sqsubseteq c$ .  $c$  being a minimal element of  $A + A$  according to  $\sqsubseteq$ , and  $a$  and  $b$  belonging to  $A + A$ , it turns out that  $a = b = c$ . At last,  $c \in A$ . Hence  $A \boxplus A \subseteq A$ .  $\sqsubseteq$  is then idempotent on  $\mathcal{A}_H$ .  $\square$

### 3.3 Construction of $\boxplus$

**Definition 10** Let  $a \in A_r(\{u_1, \dots, u_n\})$  and  $b \in A_s(\{v_1, \dots, v_m\})$  where  $a = \{(u_1, l_1), \dots, (u_n, l_n)\}$  and  $b = \{(v_1, l'_1), \dots, (v_m, l'_m)\}$ . We construct  $a \boxplus b$ , the finite set of alignments  $c = \{(w_1, L_1), \dots, (w_p, L_p)\}$  such that

1.  $\{w_1, \dots, w_p\} = \text{word}(a) \cap \text{word}(b)$
2. Either, for all  $(i, k)$  such that  $w_k = u_i$  we have  $l_i \subseteq L_k$ , or for all  $(j, k)$  such that  $w_k = v_j$  we have  $l'_j \subseteq L_k$ .
3.  $c$  is a locally maximal alignment.

An alignment in  $a \boxplus b$  is thus based either on a restriction of  $a$  to the support  $\text{word}(a) \cap \text{word}(b)$  or on a restriction of  $b$  to the same support. For instance, if  $a = \{(\overline{a}cd, ab\overline{a}c, \overline{a}ba)\}$  and  $b = \{(a\overline{c}d, aba\overline{c}, \overline{c}a)\}$ , then  $a \boxplus b = \{(\overline{a}c\overline{c}d, \overline{a}ba\overline{c}), (a\overline{c}d, ab\overline{a}c)\}$ .

### Definition 11

$$A \boxplus B = \bigcup_{\substack{b \in B \\ a \in A}} (a \boxplus b)$$

**Proposition 4** The operation  $\boxplus$  is internal to  $\mathcal{A}_H$ , commutative and idempotent.

**Proof.** The commutativity is straightforward (definition 10 is symmetric wrt  $a$  and  $b$ ). For idempotence, we use the fact (direct consequence of the definition) that if  $a$  and  $b$  are locally maximal alignments on the same support, then  $a \boxplus b = \{a, b\}$ . Let us consider  $A \in \mathcal{A}_H$ : if  $a \in A$  then  $a \in (a \boxplus a) \subseteq (A \boxplus A)$  and therefore  $A \subseteq A \boxplus A$ . If  $c \in A \boxplus A$ , then there exists  $(a, b) \in A^2$  such that  $c \in a \boxplus b$ . Since  $a$  and  $b$  have the same support, either  $c = a$  or  $c = b$ , therefore  $c \in A$  and  $A \boxplus A \subseteq A$ .  $\square$

### 3.4 Structure of homogeneous sets of alignments on $U$

We define  $\sup_{\sqsubseteq}(A, B)$  as the minimal set of alignments larger than  $A$  and  $B$  (if it exists) according to  $\sqsubseteq$ . Similarly,  $\inf_{\sqsubseteq}(A, B)$  is the maximal set of alignments smaller than  $A$  and  $B$ .

**Proposition 5** Let  $A$  and  $B$  be finite homogeneous sets of alignments. Then  $\sup_{\sqsubseteq}(A, B)$  exists and:

$$\sup_{\sqsubseteq}(A, B) = A \boxplus B$$

**Proof.**

- First, we show that  $A \boxplus B$  is greater than  $A$  and  $B$  for  $\sqsubseteq$ . Let  $c \in A \boxplus B$ . By construction, there exist  $a \in A$  and  $b \in B$  such that  $c \in a \boxplus b \subseteq a + b$ . By the first item of definition 8,  $\text{word}(a) \subseteq \text{word}(c)$  and by the two other items, we can conclude that  $a \sqsubseteq c$ . Thus for every  $c \in C$  there is  $a \in A$  such that  $a \sqsubseteq c$ . Thus  $A \subseteq A \boxplus B$  and  $B \subseteq A \boxplus B$ .
- Let  $C$  be a set of alignments greater than  $A$  and  $B$ , and let  $c \in C$ . There are  $a \in A$  and  $b \in B$  such that  $a \sqsubseteq c$  and  $b \sqsubseteq c$ . We need to find  $c' \in A \boxplus B$  such that  $c' \sqsubseteq c$ . Remove from the support of  $c$  all words not in the support of  $a$  or  $b$ . The obtained alignment may not be locally maximal, so we add more boxed letters to make it locally maximal. The result alignment  $c'$  satisfies all conditions of Definition 8, thus  $A \boxplus B \subseteq C$  and therefore  $\sup_{\sqsubseteq}(A, B) = A \boxplus B$ .  $\square$

There is no equivalent relation between  $\boxplus$  and  $\inf$  for all homogeneous sets of alignments, we must restrict to sets of all alignments built on a given set of words.

**Definition 12** If  $U$  is a finite collection of words, we define the collection of sets of alignments  $\mathcal{A}(U) = \{A(V) \mid V \subseteq U\}$ .

**Proposition 6** Let  $A$  and  $B$  be sets of alignments in  $\mathcal{A}(U)$ . Then, in  $\mathcal{A}(U)$ ,  $\inf_{\sqsubseteq}(A, B)$  exists and:

$$\inf_{\sqsubseteq}(A, B) = A \boxplus B$$

**Proof.**

- First, we show that if  $A = A(V)$  and  $B = A(W)$  with  $V \subseteq U$  and  $W \subseteq U$  then  $A \boxplus B = A(W \cap V)$ . Let  $c \in A \boxplus B$ .  $c$  is a locally maximal alignment on its support  $\text{word}(A) \cap \text{word}(B) = W \cap V$ , thus  $c \in A(W \cap V)$ . Let  $c \in A(W \cap V)$ . Let  $a$  be an alignment on  $W$  such that  $c \sqsubseteq a$ , then  $c$  is obtained from  $a \in A$  using the definition of  $A \boxplus B$  and  $c \in A \boxplus B$ .

- Let  $C \in \mathcal{A}(U)$  be a set of alignments smaller than  $A$  and  $B$ . We show that  $C$  is smaller than  $A \uplus B$ . Some alignments of  $C$  are smaller than alignments of  $A$  and others are smaller than alignments of  $B$ . Since  $C$  is homogeneous, its support  $\text{word}(C)$  must be included in  $\text{word}(A) \cap \text{word}(B)$  and since  $C = A(T)$  for some  $T \subseteq U$ , then  $T \subseteq V \cap W$ . Therefore  $A(T) \subseteq A(V \cap W)$  which is exactly  $C \subseteq A \uplus B$ .  $\square$

**Proposition 7** Let  $U = \{u_1, u_2, \dots, u_n\}$  be a finite set of words, the operations  $\uplus$  and  $\uplus$  are internal to  $\mathcal{A}(U)$ .

**Proof.** For  $\uplus$  it is a consequence of the previous definition. For  $\uplus$ , it is not difficult to see it from the definition of  $\uplus$ .  $\square$

**Proposition 8** Let  $U = \{u_1, u_2, \dots, u_n\}$  be a finite set of words, antichain for  $\leq$ . Then  $\mathcal{U} = (\mathcal{A}(U), \uplus, \uplus)$  is a lattice. This lattice is said to be built on the finite language  $U$ .

**Proof.** This is a direct consequence of the three previous propositions.  $\square$

## 4 Analogical proportions in the lattice $\mathcal{U}$

### 4.1 The axioms of analogical proportion

**Definition 13 (Analogical proportion)** An analogical proportion on a set  $\mathbb{E}$  is a relation in  $\mathbb{E}^4$  such that, for all 4-tuples  $A, B, C$  et  $D$  in relation in this order (denoted  $A : B :: C : D$ ):

1.  $A : B :: C : D \Leftrightarrow C : D :: A : B$
2.  $A : B :: C : D \Leftrightarrow A : C :: B : D$

For every 2-tuple, one has :  $A : B :: A : B$

It is easy to show that five other proportions are equivalent:

$$\begin{array}{lll} B : A :: D : C & D : B :: C : A & D : C :: B : A \\ B : D :: A : C & C : A :: D : B & \end{array}$$

These requirements are often called the *axioms* of analogical proportion (see [Lep03]).

### 4.2 Analogical proportions between words

**A first definition using factorization.** According to Yvon and Stroppa [SY05] a general definition of analogical proportion, conform to the axioms, can be given in many different cases thanks to the notion of *factorization*. We show here how it applies in  $\Sigma^*$ , and we will come back later to its use in general lattices.

**Definition 14 (Analogical proportions between words.)**

$(x, y, z, t) \in \Sigma^*$  are in analogical proportion, which is denoted  $x : y : z : t$ , if and only if there exists a positive integer  $n$  and two sets of words  $(\alpha_i)_{i \in [1, n]}$  and  $(\beta_i)_{i \in [1, n]} \in \Sigma^*$  such that:

$$x = \alpha_1 \dots \alpha_n, t = \beta_1 \dots \beta_n, y = \alpha_1 \beta_2 \alpha_3 \dots \alpha_n, z = \beta_1 \alpha_2 \beta_3 \dots \beta_n$$

ou

$$x = \alpha_1 \dots \alpha_n, t = \beta_1 \dots \beta_n, y = \beta_1 \alpha_2 \beta_3 \dots \alpha_n, z = \alpha_1 \beta_2 \alpha_3 \dots \beta_n$$

and  $\forall i, \alpha_i \beta_i \neq \epsilon$ .

**Example.**  $\text{reception} : \text{refection} :: \text{deceptive} : \text{defective}$  is an analogical proportion between sequences, with  $n = 3$  and the factors :  $\alpha_1 = \text{re}, \alpha_2 = \text{cept}, \alpha_3 = \text{ion}, \beta_1 = \text{de}, \beta_2 = \text{fect}, \beta_3 = \text{ive}$ .

	$\beta_1$	$\alpha_1$	$\beta_2$	$\alpha_2$	$\beta_3$	$\alpha_3$
$x :$		re		cept		ion
$y :$		re	fect			ion
$z :$	de			cept	ive	
$t :$	de		fect		ive	

The authors have shown that this definition is conform to the axioms.

**Another definition using alignments.** This second definition, with the associated algorithms, is given in [MBD08]. The axioms of analogical proportion are verified as well.

**Definition 15** Let  $u, v, w$  and  $x$  four words in  $\Sigma^*$ . We assume that an analogical proportion is defined on  $\Sigma$ . We extend this relations to  $\Sigma_\epsilon = \Sigma \cup \{\epsilon\}$ , adding the proportions  $a : \epsilon :: a : \epsilon$  for all  $a \in \Sigma$ . Then  $u, v, w$  and  $x$  are in analogical proportion in  $\Sigma^*$  if there exists an alignment between the four words such that every column of the alignment is an analogical proportion in  $\Sigma_\epsilon$ .

**Example** Let  $\Sigma = \{a, b, c, A, B, C\}$  an alphabet with the analogical proportions  $a : b :: A : B$ ,  $a : c :: A : C$ ,  $c : b :: C : B$ . The following alignment shows that there is an analogical proportion in  $\Sigma^*$  between the four words  $CaCA, CcbBA, bAc$  and  $bCbb$ .

$$\left( \begin{array}{ccccc} C & a & & C & A \\ C & c & b & B & A \\ b & A & & c & \\ b & C & b & b & \end{array} \right)$$

Note that there is no boxed letter in this alignment. It can happen anyway in the case of a column such that  $a : a :: a : a$ .

**Links between the two definitions.** The second definition using alignments is shown to imply the first one (not the reverse). However, a straightforward modification of the first one lead to a complete equivalence [Has11].

### 4.3 Analogical proportions in a lattice

Using the factorization technique, Stroppa and Yvon [SY05] have found that a general definition of an analogical proportion can be given in a lattice. Unfortunately, his definition was uncomplete. We give here the complete one.

**Definition 16** For four elements  $(x, y, z, t) \in (L, \vee, \wedge)^4$ , the analogical proportion denoted  $(x : y :: z : t)$  is true if and only if:

$$\begin{array}{l} x = (x \wedge y) \vee (x \wedge z) \text{ and } x = (x \vee y) \wedge (x \vee z) \\ y = (x \wedge y) \vee (t \wedge y) \text{ and } y = (x \vee y) \wedge (t \vee y) \\ z = (t \wedge z) \vee (x \wedge z) \text{ and } t = (t \vee z) \wedge (t \vee y) \\ t = (t \wedge z) \vee (t \wedge y) \text{ and } z = (t \vee z) \wedge (x \vee z) \end{array}$$

The geometry of this definition is displayed in figure 3.

A simple example of proportion in a lattice is given by the following property:

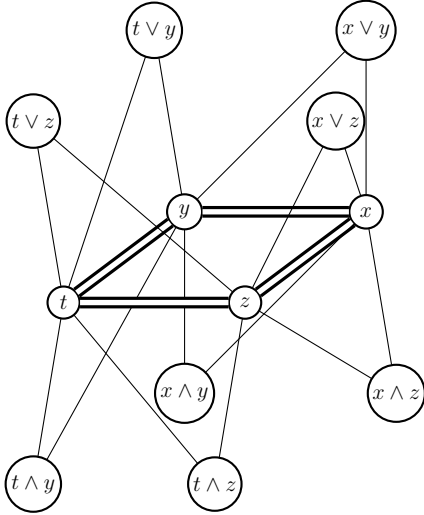


Figure 3. The general analogical proportion in a lattice.

**Proposition 9** Let  $y$  and  $z$  be two elements of a lattice. Then the following analogical proportion holds:

$$(y : y \vee z :: y \wedge z : z)$$

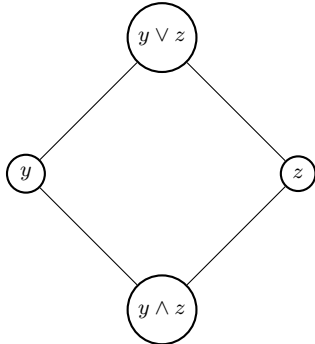


Figure 4. A canonical proportion in a lattice:  $(y : y \vee z :: y \wedge z : z)$ .

#### 4.4 Learning from $\mathcal{U}$

After having given the basis in the previous sections, we give preliminary here remarks and hints concerning some possible extensions of this work to applications, via machine learning, in connexion with analogical proportions and lattice structure.

Firstly, when investigating the connexions between locally maximal subwords, locally minimal superwords and analogical proportions, a first property is easy to show from definition 15 and proposition 1.

**Proposition 10** Let  $w = w_1 \cdots w_p$  be a locally maximal subword of two words  $u$  and  $v$ . Then:

$$\forall t \in L(A_w(\{u, v\})), \exists w \in \sqcap(u, v) \text{ such that } t : u :: v : w$$

$$\forall w \in \sqcap(u, v), \exists t \in L(A_w(\{u, v\})), \text{ such that } t : u :: v : w$$

Take  $u = abcabb$  and  $v = aabbc$  with the maximal subword  $y = abb$ . The alignment  $(\begin{smallmatrix} \boxed{a} & \boxed{b} & ca & \boxed{b} & \boxed{b} \\ \boxed{a} & \boxed{a} & \boxed{b} & \boxed{b} & c \end{smallmatrix})$  is locally maximal. The language  $L(A_{abb}(\{u, v\}))$  contains the word  $w = abcabb$ . The facing figure displays the analogical proportion  $w : u :: v : y$

$$\left( \begin{array}{c} a \\ a \\ a \\ a \end{array} \begin{array}{c} \boxed{a} \\ \boxed{a} \\ \boxed{a} \\ \boxed{a} \end{array} \begin{array}{c} \boxed{b} \\ \boxed{b} \\ \boxed{b} \\ \boxed{b} \end{array} \begin{array}{c} c \\ c \\ c \\ c \end{array} \begin{array}{c} a \\ a \\ a \\ a \end{array} \begin{array}{c} \boxed{b} \\ \boxed{b} \\ \boxed{b} \\ \boxed{b} \end{array} \begin{array}{c} b \\ b \\ b \\ b \end{array} \begin{array}{c} c \\ c \\ c \\ c \end{array} \right)$$

However, what we are really interested in is to find how using the lattice  $\mathcal{U}$  and its analogical properties to generalize  $U$ . As a second remark, we note that any homogeneous set of alignments  $A$  in  $\mathcal{U}$  represents an intensional definition of the finite language  $\sqcup(A)$ , the set of locally minimal superwords common to all the words in the support<sup>8</sup> of  $A$ . We can also construct, as indicated in section 2.4, a finite automaton as an intensional representation of this language, with the syntactic analysis facility. Therefore, we have potentially at our disposal a lattice of finite automata, in connection with the lattice of subsets of  $U$ : each automaton recognizes a finite language which is a particular generalization of the associated support, itself a subset of  $U$ .

We denote hereafter  $\leq$  the order relation between finite set of words derived from the subword relation  $\leq$ , defined by:  $M \leq N$  iff  $\forall m \in M, \exists n \in N$  such that  $m \leq n$ . For example,  $\{ab, c\} \leq \{abcd, e\}$ . There is an partial inclusion relation between the languages recognized by this lattice of automata, compatible with that of the subsets, since the following property holds.

**Proposition 11** For any subsets  $J$  and  $K$  of  $U$ , the three following relations are equivalent:  $L(A(J)) \leq L(A(K))$ ,  $J \subset K$  and  $\sqcap(K) \subset \sqcap(J)$ .

Note that the exploration of such a lattice of automata, constructed on a finite set of positive examples, is the basis of the efficient finite automata inference, see [dlH10]. This could be one basis for the use of our lattice in machine learning.

Another threads to follow could be the idea of analogical closure of a finite language, as described in [Lep03] and that of analogical generation, see [BMMA07]. In both, a triple of words is taken in the learning sample and a fourth sentence is generated, under the constraint that the four sentences are in analogical proportion. It is not yet clear to the authors how this technique can be combined with the lattice structure, but this could be a connection with the area of machine learning on the basis of formal concepts, as in [Kuz01].

#### 5 Conclusion and related work

The problem of finding one longest common subsequence (subword) or one shortest common supersequence (superword) to two or more words has been well covered (see e.g. [Gus97], pp 287-293 and 309, [IF92]). However, to the best of our knowledge, the problem of finding an intentional definition to the sets of maximal subwords and minimal superwords of a set of words has not been explored yet. In this, we have produced, via the construction of a lattice of alignment sets, an interesting subset of minimal superwords and maximal subwords to a set of words. We have not worked yet neither on the theoretical complexity of the construction of the lattice of alignments,

<sup>8</sup> Remember that this support, that we have denoted  $word(A)$ , is a subset of  $U$ .

nor on its practical complexity and applications. Hereafter we give some bibliographical hints to this problem.

A complexity result (sometimes misinterpreted) is given by Maier [Mai78] who has demonstrated that the "yes/no longest common subsequence problem" and the "yes/no shortest common supersequence problem" are NP-complete for alphabets of sufficient size. These problems are defined as follows: "Given an integer  $k$  and a set of sequences  $R$ , is  $|LCS(R)| \leq k$ ? Is  $|SCS(R)| \geq k$ ?" where  $|LCS(R)|$  and  $|SCS(R)|$  are the length of a longest common subsequence and the length of a shortest common supersequence of  $R$ .

It is also true that finding the length of a shortest (longest) super(sub)sequence common to a set of  $k$  sequences is in<sup>9</sup>  $\mathcal{O}(m_1 \dots m_k)$ , with  $m_i$  the size of the  $i$ -th of the  $k$  sequences, hence exponential in  $k$ .

The works of Fraser and Irving [FIM96] have produced algorithms to find the *longest* minimal common supersequence (superword) and the *shortest* maximal common subsequence, according to the order relation  $\leq$ .

Yvon and Stroppa [SY05] give a definition of an analogical proportion between words and also within lattices. Our objective is to use the properties of the lattice structure on alignment sets to solve the associated analogical equations.

## REFERENCES

- [BMMA07] S. Bayouhd, H. Mouchère, L. Miclet, and E. Anquetil. Learning a classifier with very few examples: analogy based and knowledge based generation of new examples for character recognition. In *European Conference on Machine Learning, Springer LNAI 4701*, 2007.
- [dlH10] C. de la Higuera. *Grammatical Inference*. Cambridge University Press, 2010.
- [FIM96] C. Fraser, R. Irving, and M. Middendorf. Maximal common subsequences and minimal common supersequences. *Information and Computation*, 124:145–153, 1996.
- [GHE89] D. Gentner, K. Holyoak, and B. Kokinov (Editors). *The Analogical Mind: Perspectives from Cognitive Science*. MIT Press, 1989.
- [Gus97] D. Gusfield. *Algorithms on Strings, Trees, and Sequences*. Cambridge Univ. Press, 1997.
- [Has11] A. Ben Hassena. *Apprentissage par analogie de structures d'arbres*. PhD thesis, Université de Rennes 1, 2011.
- [IF92] R. Irving and C. Fraser. Two algorithms for the longest common subsequence of three (and more) strings. In *Proc. 3rd Symp. on Combinatorial Pattern Matching, Springer LCNS 644*, pages 214–229, 1992.
- [IF94] R. Irving and C. Fraser. Maximal common subsequences and minimal common supersequences. In *Proc. 5rd Symp. on Combinatorial Pattern Matching, Springer LCNS 807*, pages 173–183, 1994.
- [Kuz01] O. Kuznetsov. Machine learning on the basis of formal concept analysis. *Automation and Remote Control*, 62, Issue 10:1543–1564, 2001.
- [Lep03] Y. Lepage. *De l'analogie rendant compte de la commutation en linguistique*. Université de Grenoble, Grenoble, 2003. Habilitation à diriger les recherches.
- [Mai78] D. Maier. The complexity of some problems on subsequences and supersequences. *JACM*, 25:332–336, 1978.
- [MBD08] L. Miclet, S. Bayouhd, and A. Delhay. Analogical dissimilarity: Definition, algorithms and two experiments in machine learning. *Journal of Artificial Intelligence Research*, 32:793–824, 2008.
- [MBJ12] L. Miclet, N. Barbot, and B. Jeudy. The construction of a finite automaton recognizing exactly the maximal subwords common to two (and more) words. *In submission.*, 2012.
- [Mit97] T. Mitchell. *Machine Learning*. McGraw Hill, 1997.
- [SY05] N. Stroppa and F. Yvon. Analogical learning and formal proportions: Definitions and methodological issues. Technical Report ENST-2005-D004, École Nationale Supérieure des Télécommunications, June 2005.
- [WF74] R. Wagner and M. Fisher. The string-to-string correction problem. *Journal of the ACM*, 21(1):168–173, 1974.

---

<sup>9</sup> The elementary operation is the comparison.