



**HAL**  
open science

## **Stratospheric ozone depletion reduces ocean carbon uptake and enhances ocean acidification**

Andrew Lenton, Francis Codron, Laurent Bopp, Nicolas Metzl, Patricia Cadule, Alessandro Tagliabue, Julien Le Sommer

► **To cite this version:**

Andrew Lenton, Francis Codron, Laurent Bopp, Nicolas Metzl, Patricia Cadule, et al.. Stratospheric ozone depletion reduces ocean carbon uptake and enhances ocean acidification. *Geophysical Research Letters*, 2009, 36, pp.12606. 10.1029/2009GL038227 . hal-00760196

**HAL Id: hal-00760196**

**<https://hal.science/hal-00760196>**

Submitted on 28 Oct 2020

**HAL** is a multi-disciplinary open access archive for the deposit and dissemination of scientific research documents, whether they are published or not. The documents may come from teaching and research institutions in France or abroad, or from public or private research centers.

L'archive ouverte pluridisciplinaire **HAL**, est destinée au dépôt et à la diffusion de documents scientifiques de niveau recherche, publiés ou non, émanant des établissements d'enseignement et de recherche français ou étrangers, des laboratoires publics ou privés.

## Stratospheric ozone depletion reduces ocean carbon uptake and enhances ocean acidification

Andrew Lenton,<sup>1</sup> Francis Codron,<sup>2</sup> Laurent Bopp,<sup>3</sup> Nicolas Metzler,<sup>1</sup> Patricia Cadule,<sup>3</sup> Alessandro Tagliabue,<sup>3</sup> and Julien Le Sommer<sup>4</sup>

Received 17 March 2009; revised 22 April 2009; accepted 19 May 2009; published 20 June 2009.

[1] Observational and atmospheric inversion studies find that the strength of the Southern Ocean carbon dioxide (CO<sub>2</sub>) sink is not increasing, despite rising atmospheric CO<sub>2</sub>. However, this is yet to be captured by contemporary coupled-climate-carbon-models used to predict future climate. We show that by accounting for stratospheric ozone depletion in a coupled-climate-carbon-model, the ventilation of carbon rich deep water is enhanced through stronger winds, increasing surface water CO<sub>2</sub> at a rate in good agreement with observed trends. We find that Southern Ocean uptake is reduced by 2.47 PgC (1987–2004) and is consistent with atmospheric inversion studies. The enhanced ventilation also accelerates ocean acidification, despite lesser Southern Ocean CO<sub>2</sub> uptake. Our results link two important anthropogenic changes: stratospheric ozone depletion and greenhouse gas increases; and suggest that studies of future climate that neglect stratospheric ozone depletion likely overestimate regional and global oceanic CO<sub>2</sub> uptake and underestimate the impact of ocean acidification. **Citation:** Lenton, A., F. Codron, L. Bopp, N. Metzler, P. Cadule, A. Tagliabue, and J. Le Sommer (2009), Stratospheric ozone depletion reduces ocean carbon uptake and enhances ocean acidification, *Geophys. Res. Lett.*, 36, L12606, doi:10.1029/2009GL038227.

### 1. Introduction

[2] The Southern Ocean (SO; south of 40°S) plays an important role mitigating climate change, acting as a significant sink for atmospheric carbon dioxide (CO<sub>2</sub>) that is observationally estimated to account for >40% of the total annual oceanic uptake [Takahashi *et al.*, 2009]. Atmospheric CO<sub>2</sub> primarily enters the ocean via air-sea fluxes, which are principally a function of the gradient between the partial pressures of CO<sub>2</sub> (pCO<sub>2</sub>) in the surface ocean and atmosphere (pCO<sub>2atm</sub> – pCO<sub>2ocean</sub> = ΔpCO<sub>2</sub>) and wind speed (piston velocity [e.g. Wanninkhof, 1992]). Increasing atmospheric CO<sub>2</sub> levels should, a priori, enhance ΔpCO<sub>2</sub> and hence CO<sub>2</sub> uptake accordingly. However, recent SO observational studies have shown that the value of surface water pCO<sub>2</sub> has increased at a similar or a slightly faster rate than the mean atmospheric growth rate over recent decades [Metzler, 2009; Takahashi *et al.*, 2009]. This is consistent with inversions of observed atmospheric CO<sub>2</sub> concentra-

tions that show that the SO CO<sub>2</sub> sink is not increasing [Le Quéré *et al.*, 2007]. In contrast, coupled-climate-carbon models (CCCMs), used to predict future interactions between carbon and climate, predict a strengthening SO CO<sub>2</sub> sink [e.g., Crueger *et al.*, 2008]. That CCCMs cannot reproduce recent observed changes is a shortcoming that must be addressed if we are to have confidence in their projections, especially at regional scales.

[3] Ocean-carbon models that are driven by atmospheric observations suggest the reduction in air-sea CO<sub>2</sub> fluxes results from increased wind driven ocean ventilation that enhances the ventilation of carbon-rich deepwater. This increases carbon concentration in the upper ocean thereby reducing the gradient between the atmosphere and ocean leading to a decreased CO<sub>2</sub> uptake [Le Quéré *et al.*, 2007; Lenton and Matear, 2007], although the precise mechanisms have been recently questioned [Böning *et al.*, 2008]. Stronger SO winds are part of the surface signature of the Southern Annular Mode (SAM), which is a pattern of atmospheric variability that is characterized in its positive phase by a poleward shift of the westerlies. Over recent decades, the SAM has exhibited a strong upward trend [Marshall, 2003] that is primarily driven by increased greenhouse gas concentrations (GHGs) and stratospheric ozone depletion [Arblaster and Meehl, 2006], although the dynamical mechanism by which stratospheric anomalies propagate to the lower atmosphere remains unresolved [Song and Robinson, 2004].

[4] Climate only models (i.e. non-carbon coupled) that include stratospheric ozone depletion, potentially even underestimating its response [Perlwitz *et al.*, 2008; Son *et al.*, 2008], simulate a stronger SAM and increased SO winds speeds than those driven by GHGs alone [Cai and Cowan, 2007]. However these models do not explicitly represent the interactions between atmospheric dynamics and ocean biogeochemistry and thus are unable to address the impact of stratospheric ozone depletion on carbon uptake, ocean biology and ocean acidification. Current CCCMs, that explicitly represent the interactions between climate and the carbon cycle, do include the increase in GHGs, but stratospheric ozone depletion is neglected.

[5] In this study we include stratospheric ozone depletion in a CCCM and demonstrate that it drives a significant decrease in both regional and global ocean CO<sub>2</sub> uptake. We demonstrate that by including ozone depletion observations we can reconcile CCCM predictions with recent observations, as well as quantifying its impact on carbonate chemistry, biological productivity, ocean acidification and regional and global CO<sub>2</sub> uptake. To this end we use ensemble simulations of the IPSL-CM4-LOOP coupled-climate carbon model [Friedlingstein *et al.*, 2006] driven

<sup>1</sup>LOCEAN, IPSL, UPMC, MHNH, IRD, CNRS, Paris, France.

<sup>2</sup>LMD, IPSL, UPMC, X, ENS, CNRS, Paris, France.

<sup>3</sup>LSCE, IPSL, CEA, UVSQ, CNRS, Gif-sur-Yvette, France.

<sup>4</sup>LEGI, UJF, INPG, CNRS, Grenoble, France.

with and without stratospheric ozone depletion in the period between 1975 and 2004.

## 2. Methods

[6] The IPSL-CM4-LOOP 3D prognostic climate-carbon-coupled-model [Marti *et al.*, 2006] comprises the (1) Laboratoire de Météorologie Dynamique atmospheric model (LMDZ4) [Hourdin *et al.*, 2006], (2) Organizing Carbon and Hydrology in Dynamic Ecosystems (ORCHIDEE) [Krinner *et al.*, 2005] land use carbon cycle model, (3) ORCALIM2 ocean and sea ice model [Timmerman *et al.*, 2005], and (4) the Pelagic Interaction Scheme for Carbon and Ecosystem Studies (PISCES) [Aumont and Bopp, 2006] marine biogeochemical model (see auxiliary material for more detail).<sup>1</sup>

[7] To avoid a large discontinuity in CO<sub>2</sub> emissions, land use changes from 2000–2004 were scaled by observed values [Houghton and Hackler, 2002]. Concentrations of non-CO<sub>2</sub> greenhouse gases (CFC11, CFC12, CH<sub>4</sub>, SO<sub>4</sub>) and aerosols are included [Boucher and Pham, 2002], the solar forcing was held constant at 1365 W/m<sup>2</sup> and the impact of volcanic eruptions not considered.

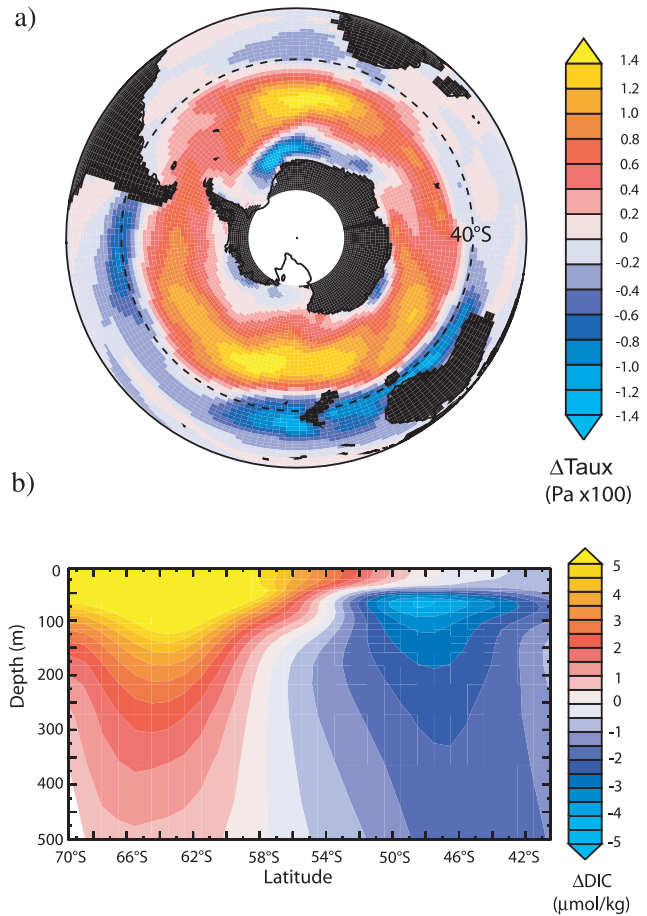
[8] To ensure a robust result and to test the sensitivity of our results to different atmospheric conditions we performed two ensembles of 5 control (O<sub>3</sub>clim) and 5 test (O<sub>3</sub>hole) cases with and without stratospheric ozone depletion respectively. All members were started with identical initial conditions for the ocean, land and sea-ice. The initial state in the atmosphere was then changed by several days for each ensemble pair.

[9] In the O<sub>3</sub>clim simulations, ozone values were based on a climatology [Keating and Young, 1985]. In the O<sub>3</sub>hole simulations, we augmented this climatology with a linear decrease in the polar lower stratosphere from 1975 to 2000. We adjust the latitude-pressure structure of the trend, and its seasonal magnitude, to be consistent with observations [Randel and Wu, 2007]. After 2000, the amplitude of ozone depletion is held constant except for seasonal variation.

## 3. Results and Discussion

[10] The SAM trend computed from O<sub>3</sub>hole shows very little difference between 1975 and 1986, relative to O<sub>3</sub>clim. In the period 1987 onwards, O<sub>3</sub>hole has a marked maximum in the austral spring/summer and a strong positive trend ( $+0.25 \pm 0.06$   $\sigma$ /decade;  $\sigma$  = standard deviation) that is consistent with observations ( $+0.21$   $\sigma$ /decade) [Marshall, 2003]. Conversely, O<sub>3</sub>clim exhibits almost no SAM trend ( $-0.09 \pm 0.09$   $\sigma$ /decade) and no seasonality over the same period. Initially, there are only small differences in wind stress between ensembles, but from 1987 the differences in wind stress between O<sub>3</sub>hole and O<sub>3</sub>clim become progressively larger in time. Westerlies are shifted polewards and zonally averaged wind stresses increase by up to 60% locally (Figure 1a).

[11] Initially, the similarity in wind stresses leads to no significant difference in supply of deepwater to the upper ocean and hence no significant difference in  $\Delta p\text{CO}_2$  (air-sea

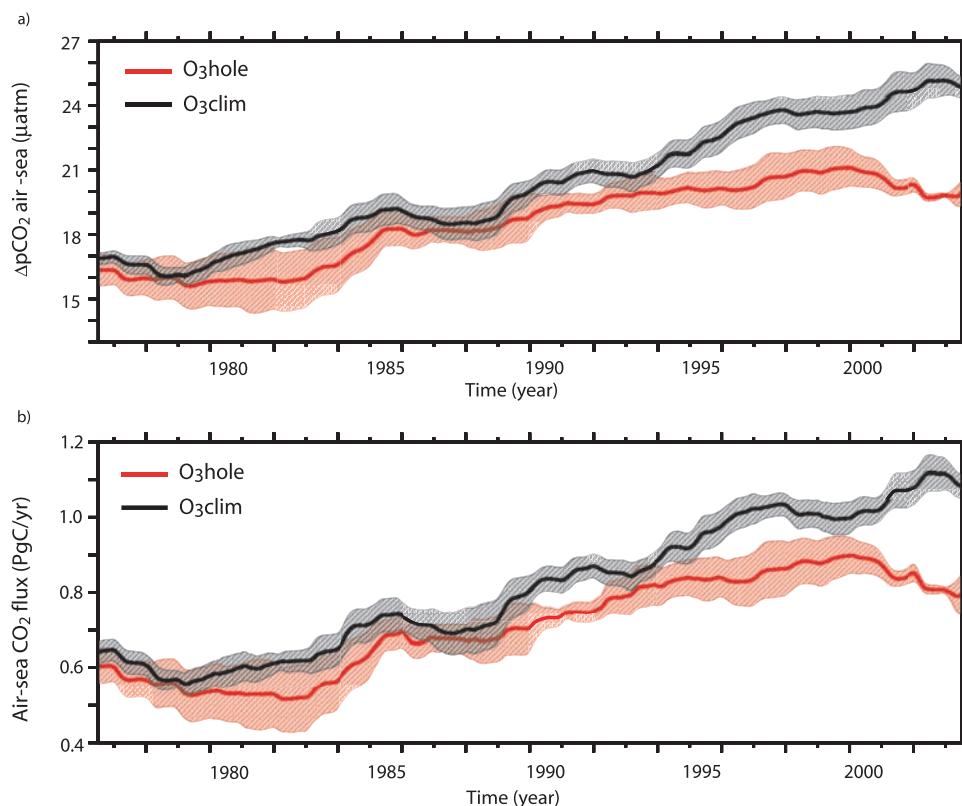


**Figure 1.** (a) Zonal wind stress difference between O<sub>3</sub>hole and O<sub>3</sub>clim, 1994–2004 average (Pa x 100; positive is clockwise). (b) Zonal-mean difference in dissolved inorganic carbon (DIC) concentrations between O<sub>3</sub>hole and O<sub>3</sub>clim ( $\mu\text{mol/kg}$ ; 1994–2004) in response to Figure 1a.

$p\text{CO}_2$  gradient) between O<sub>3</sub>hole and O<sub>3</sub>clim (Figure 2). However, as the wind stress increases in O<sub>3</sub>hole, there is an enhancement of the upward and equatorward transport of carbon-rich deep water that increases surface water dissolved inorganic carbon (DIC  $>6$   $\mu\text{mol/kg}$  south of 60°S; Figure 1b) and hence  $p\text{CO}_2$ . This increase in surface water  $p\text{CO}_2$  in response to stratospheric ozone depletion leads to a reduction in  $\Delta p\text{CO}_2$ . The associated increase in alkalinity compensates partly for the increase in surface water  $p\text{CO}_2$ , while the very small increase in primary production ( $<2\%$ ; 1975–2004) likely plays little role. Without stratospheric ozone depletion,  $\Delta p\text{CO}_2$  increases, which is consistent with a strengthening gradient in response to CO<sub>2</sub> emissions alone.

[12] An increased vertical supply of limiting nutrient (iron) to surface waters should increase net primary productivity (NPP) [de Baar *et al.*, 2005] and hence act to lower oceanic  $p\text{CO}_2$ . The low sensitivity of net primary production (NPP) to increased iron ( $<2\%$ ) is controlled by a concomitant increase in the phytoplankton iron demand (expressed as the amount of iron required to fix one unit of CO<sub>2</sub>, Fe/C). The iron demand increases with a greater seawater iron concentration [Sunda and Huntsman, 1997] and as a result of the increased diatom dominance that

<sup>1</sup>Auxiliary materials are available in the HTML. doi:10.1029/2009GL038227.



**Figure 2.** (a) Spatially averaged  $\Delta p\text{CO}_2$  (south of  $40^\circ\text{S}$ ), showing that accounting for stratospheric ozone depletion ( $\text{O}_3\text{hole}$ ) reduces  $\Delta p\text{CO}_2$  (relative to  $\text{O}_3\text{clim}$ ), in response to increased upper ocean carbon concentration (Figure 1b). (b) Integrated air to sea  $\text{CO}_2$  flux (south of  $40^\circ\text{S}$ ) showing stratospheric ozone depletion ( $\text{O}_3\text{hole}$ ) significantly reduces  $\text{CO}_2$  uptake (relative to  $\text{O}_3\text{clim}$ ), and is strongly correlated with changes in  $\Delta p\text{CO}_2$ . The values of  $\Delta p\text{CO}_2$  and  $\text{CO}_2$  fluxes represent the ensemble mean, while the shaded area represents the standard error of the mean.  $\text{CO}_2$  fluxes and  $\Delta p\text{CO}_2$  are smoothed with 36-month running mean filters.

follows the addition of iron [de Baar *et al.*, 2005]. The efficiency with which iron can fuel NPP is therefore depressed and NPP only increases moderately in  $\text{O}_3\text{hole}$ . Importantly, the amount of chlorophyll associated with a given quantity of phytoplankton carbon (the chlorophyll to carbon ratio) is also greater with lesser iron limitation, which suggests that chlorophyll and NPP can become decoupled in response to changes in vertical nutrient supply. This would suggest that satellite observations of elevated chlorophyll-*a* in response to increased winds [Lovenduski and Gruber, 2005] need to account for the associated variability in phytoplankton chlorophyll to carbon ratios, which may actually drive a weak biological response.

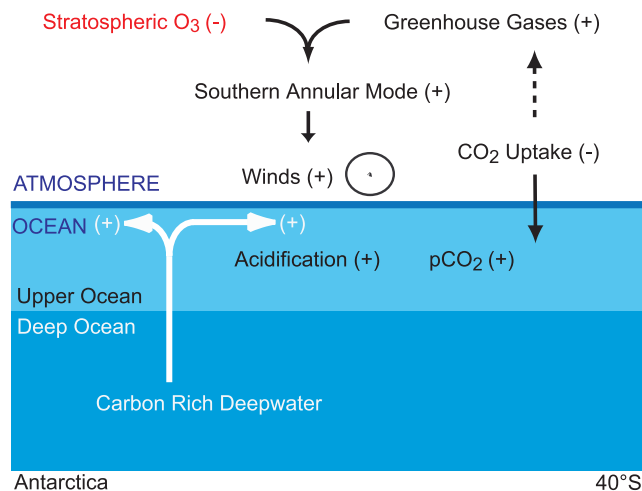
[13] Circumpolar observations of oceanic  $p\text{CO}_2$  growth rate collected during the SO austral winter, south of  $50^\circ\text{S}$  (and south of  $40^\circ\text{S}$  regionally), thereby avoiding the spatial heterogeneity of summer growing season and  $\text{CO}_2$  solubility changes, show that surface waters have increased at a similar or a slightly faster rate ( $2.1 \pm 0.6 \mu\text{atm}/\text{year}$ ; Table 1) than the mean atmospheric growth rate over the same period ( $1.7 \mu\text{atm}/\text{year}$ ; Table 1) [Takahashi *et al.*, 2009; Metzl, 2009]. This region (circumpolar south of  $50^\circ\text{S}$ ) corresponds to the region of the largest changes in the supply of carbon-rich deepwater to the upper ocean (Figure 1b) and is characterised by deep winter mixing and low productivity during the austral winter. We see when stratospheric ozone depletion is neglected ( $\text{O}_3\text{clim}$ ), the oceanic growth rate is

significantly lower ( $1.1 \pm 0.1 \mu\text{atm}/\text{yr}$ ; Table 1) than the atmospheric growth rate ( $1.9 \mu\text{atm}/\text{yr}$ ; Table 1), in discord with observations. Conversely, by including stratospheric ozone depletion ( $\text{O}_3\text{hole}$ ) we find that the oceanic surface water  $p\text{CO}_2$  growth rate increases at a similar rate ( $2.0 \pm 0.2 \mu\text{atm}/\text{yr}$ ; Table 1) to that of the atmosphere ( $2.0 \mu\text{atm}/\text{yr}$ ; Table 1), in good agreement with observations.

[14] Mirroring the changes in  $\Delta p\text{CO}_2$ , there is initially little difference in integrated SO  $\text{CO}_2$  fluxes between  $\text{O}_3\text{clim}$  and  $\text{O}_3\text{hole}$  (each a sink of  $\sim 0.6 \text{PgC}/\text{yr}$ ; Figure 2). However, as the wind stress increases, there is a marked reduction in SO  $\text{CO}_2$  uptake in  $\text{O}_3\text{hole}$ , relative to  $\text{O}_3\text{clim}$  (wherein SO  $\text{CO}_2$  uptake continues to increase; Figure 2b). The linear trends in SO  $\text{CO}_2$  uptake are significantly different ( $p < 0.01$ ; 1987–2004; see auxiliary material) and cumulative SO  $\text{CO}_2$  uptake is reduced by  $2.47 \text{PgC}$  in  $\text{O}_3\text{hole}$ . The strong correlation ( $R > 0.99$ ) between air-sea  $\text{CO}_2$  fluxes and  $\Delta p\text{CO}_2$  demonstrates the importance of changes in oceanic  $p\text{CO}_2$  rather than increased wind speed, which would act to increase SO  $\text{CO}_2$  uptake.

[15] Inversions of atmospheric observations in the region south of  $45^\circ\text{S}$  show the SO  $\text{CO}_2$  sink is not increasing ( $-0.03 \text{PgC}/\text{yr}/\text{decade}$ ; 1981–2004) [Le Quéré *et al.*, 2007]. When stratospheric ozone depletion is included ( $\text{O}_3\text{hole}$ ) we also find that the strength of SO  $\text{CO}_2$  sink (in absolute terms) is also not increasing, at a rate very similar to that reported ( $-0.02 \text{PgC}/\text{yr}/\text{decade}$ ; 1994–2004)





**Figure 3.** The response of the Southern Ocean to stratospheric ozone depletion. Stratospheric ozone depletion in conjunction with greenhouse gases drives a stronger SAM, which increases the strength of westerly winds driving enhanced ventilation of carbon rich deepwater. Enhanced ventilation increases the  $p\text{CO}_2$  in ocean surface waters, thereby reducing the  $\Delta p\text{CO}_2$  and air-sea  $\text{CO}_2$  fluxes. Reduced uptake leads to a small increase in atmospheric  $\text{CO}_2$  concentration. Associated with the enhanced ventilation of carbon rich deepwater is an increase in ocean acidification. Positive (+) represents an increase/strengthening and negative (−) represents a decrease/weakening of a given process.

over the same region. The global oceanic  $\text{CO}_2$  sink is also impacted and cumulative uptake declines by 2.33 PgC in  $\text{O}_3\text{hole}$  (relative to  $\text{O}_3\text{clim}$  1987–2004), highlighting the impact of stratospheric ozone depletion on global ocean carbon uptake. As a consequence of this reduction in global oceanic  $\text{CO}_2$  uptake, the atmospheric  $\text{CO}_2$  growth rate increases in  $\text{O}_3\text{hole}$  (Table 1) and elevates atmospheric  $\text{CO}_2$  concentrations (by 1.2 ppm; 1975–2004) thereby quantifying the weak positive feedback of stratospheric ozone depletion on atmospheric  $\text{CO}_2$  levels.

[16] Despite reduced  $\text{CO}_2$  uptake, enhanced ventilation of carbon rich deep water in response to stratospheric ozone depletion accelerates the rate of ocean acidification. As the carbon content of the upper ocean increases there is a concomitant decrease in seawater pH or acidification. Ocean acidification, in conjunction with rising ocean carbon concentrations, will impact on key SO calcifying marine organisms (e.g. pteropods and coccolithophorids) by mod-

ifying their ability to form calcium carbonate shells [Iglesias-Rodriguez et al., 2008; Raven et al., 2005]. One of the key carbon parameters in response to acidification is the aragonite saturation state ( $\Omega_A$ ), which impacts rates of calcification [Langdon and Atkinson, 2005; Riebesell et al., 2000]. To quantify the impact of stratospheric ozone depletion on the aragonite saturation horizon (ASH;  $\Omega_A = 1$ , i.e., the transition depth between over- to under-saturated) and surface ocean pH, the mean differences south of  $60^\circ\text{S}$  in SO were calculated in the period 1994–2004 (corresponding to the largest changes in  $\text{CO}_2$  uptake). The total change ( $\text{O}_3\text{hole}$ ) in ASH was 55 m (1994–2004) and 40% of this shallowing was in response to stratospheric ozone depletion alone, which represents 7% of the total change in ASH that has occurred since the preindustrial [Orr et al., 2005]. The total change in mean surface water pH was 0.02 (1994–2004;  $\text{O}_3\text{hole}$ ) with 50% due to stratospheric ozone depletion, which represents 10% of the change since the preindustrial [Raven et al., 2005]. These results demonstrate that anthropogenic changes present in  $\text{O}_3\text{clim}$  due to anthropogenic  $\text{CO}_2$  are enhanced when stratospheric ozone depletion is included and suggests that high latitude SO surface waters may become understaturated with respect to aragonite ( $\Omega_A < 1$ ) sooner than was previously predicted [Orr et al., 2005].

[17] Recent studies suggest that increased mesoscale eddy activity associated with greater winds reduces the sensitivity of the response of SO overturning circulation to changes in Southern Hemisphere winds [e.g., Böning et al., 2008]. The response of  $\text{CO}_2$  fluxes to the combined impact of changing deep-water ventilation and eddy effects is unclear and remains to be assessed by fully eddy-resolving ocean-carbon models. Nevertheless, we believe that the main results of this study, using a non-eddy resolving model, are robust because (1) eddy resolving models do show elevated winds cause an increase in deep-water ventilation consistent with our study and (2) the reduced vertical supply of carbon due to eddy advection could be compensated for by enhanced eddy diffusion. Our ability to reproduce the observed SO trends in oceanic  $p\text{CO}_2$  and  $\text{CO}_2$  provides further confidence in our results.

#### 4. Conclusion

[18] We have demonstrated how upper atmosphere changes impact the ocean by increasing surface water  $p\text{CO}_2$  to be consistent with observations. The subsequent reduction in  $\Delta p\text{CO}_2$  translates to a significant reduction in regional and global air-sea  $\text{CO}_2$  fluxes; moreover, despite this reduced  $\text{CO}_2$  uptake there is an increase in the rate of ocean acidification (Figure 3). Our results suggest that

**Table 1.** Austral Winter SO Seawater  $p\text{CO}_2$  Trends Calculated From Circumpolar and Regional Observations, and Ensemble Simulations With and Without Stratospheric Ozone Depletion<sup>a</sup>

	$p\text{CO}_2\text{ocean}$ ( $\mu\text{atm/yr}$ )	$p\text{CO}_2\text{atm}$ ( $\mu\text{atm/yr}$ )	Period	Southern Ocean Region ( $<50^\circ\text{S}$ )
Observations [Metzl, 2009]	$2.1 \pm 0.3$	1.7	1991–2000	Indian Sector
Observations [Takahashi et al., 2009]	$2.1 \pm 0.6$	1.7	1986–2007	Circumpolar
$\text{O}_3\text{hole}$	$2.0 \pm 0.2$	2.0	1986–2004	Circumpolar
$\text{O}_3\text{clim}$	$1.1 \pm 0.1$	1.9	1986–2004	Circumpolar

<sup>a</sup>Trends are from south of  $50^\circ$ . The uncertainty in simulations represents the standard error of the mean. Atmospheric  $p\text{CO}_2$  concentration is expressed in  $\mu\text{atm/yr}$ , the same value as observed trends of molar fraction,  $x\text{CO}_2$  (ppm/yr).  $\text{O}_3\text{hole}$  are observations with stratospheric ozone depletion, and  $\text{O}_3\text{clim}$  are ensemble simulations without stratospheric ozone depletion.

predictions of future climate that do not account for stratospheric ozone depletion likely overestimate regional and global oceanic CO<sub>2</sub> uptake and underestimate ocean acidification. In the future, stratospheric ozone recovery and increased GHGs will be the dominant SAM drivers impacting SO winds [Arblaster and Meehl, 2006; Son et al., 2008]; our study demonstrates the importance of including stratospheric ozone in both reproducing recent observations and predicting the future evolution of the ocean carbon sink.

[19] **Acknowledgments.** We thank Pierre Friedlingstein, the French National Computing Centre (IDRIS/CCRT) and Program LEFE/Cyber, and the European Integrated Project CARBOOCEAN 511176.

## References

- Arblaster, J. M., and G. A. Meehl (2006), Contributions of external forcings to Southern Annular Mode trends, *J. Clim.*, *19*, 2896–2905.
- Aumont, O., and L. Bopp (2006), Globalizing results from ocean in situ iron fertilization studies, *Global Biogeochem. Cycles*, *20*, GB2017, doi:10.1029/2005GB002591.
- Böning, C. W., et al. (2008), The response of the Antarctic Circumpolar Current to recent climate change, *Nat. Geosci.*, *1*, 864–869.
- Boucher, O., and M. Pham (2002), History of sulfate aerosol radiative forcings, *Geophys. Res. Lett.*, *29*(9), 1308, doi:10.1029/2001GL014048.
- Cai, W., and T. Cowan (2007), Trends in Southern Hemisphere circulation in IPCC AR4 models over 1950–1999: Ozone depletion versus greenhouse forcing, *J. Clim.*, *20*, 681–693.
- Crueger, T., et al. (2008), Ocean dynamics determine the response of oceanic CO<sub>2</sub> uptake to climate change, *Clim. Dyn.*, *31*, 151–168.
- de Baar, H. J. W., et al. (2005), Synthesis of iron fertilization experiments: From the Iron Age in the Age of Enlightenment, *J. Geophys. Res.*, *110*, C09S16, doi:10.1029/2004JC002601.
- Friedlingstein, P., et al. (2006), Climate-carbon cycle feedback analysis: Results from the C4MIP model intercomparison, *J. Clim.*, *19*, 3337–3353.
- Houghton, R. A., and J. L. Hackler (2002), Carbon flux to the atmosphere from land-use changes: 1850 to 1990, *Rep. NDP-050/R1*, Carbon Dioxide Inf. Anal. Cent., Oak Ridge Natl. Lab., U.S. Dep. of Energy, Oak Ridge, Tenn.
- Hourdin, F., et al. (2006), The LMDZ4 general circulation model: Climate performance and sensitivity to parametrized physics with emphasis on tropical convection, *Clim. Dyn.*, *27*, 787–813.
- Iglesias-Rodriguez, M. D., et al. (2008), Phytoplankton calcification in a high-CO<sub>2</sub> world, *Science*, *320*, 336–340.
- Keating, G. M., and D. F. Young (1985), Interim reference models for the middle atmosphere, in *Handbook for the Middle Atmosphere Programme*, vol. 16, pp. 205–229, ICSU Sci. Comm. on Sol. Terr. Phys., Univ. of Ill., Urbana.
- Krinner, G., N. Viovy, N. de Noblet-Ducoudré, J. Ogée, J. Polcher, P. Friedlingstein, P. Ciais, S. Sitch, and I. C. Prentice (2005), A dynamic global vegetation model for studies of the coupled atmosphere-biosphere system, *Global Biogeochem. Cycles*, *19*, GB1015, doi:10.1029/2003GB002199.
- Langdon, C., and M. J. Atkinson (2005), Effect of elevated pCO<sub>2</sub> on photosynthesis and calcification of corals and interactions with seasonal change in temperature/irradiance and nutrient enrichment, *J. Geophys. Res.*, *110*, C09S07, doi:10.1029/2004JC002576.
- Lenton, A., and R. J. Matear (2007), The role of the Southern Annular Mode (SAM) in Southern Ocean CO<sub>2</sub> uptake, *Global Biogeochem. Cycles*, *21*, GB2016, doi:10.1029/2006GB002714.
- Le Quéré, C., et al. (2007), Saturation of the Southern Ocean CO<sub>2</sub> sink due to recent climate change, *Science*, *316*, 1735–1738.
- Lovenduski, N. S., and N. Gruber (2005), Impact of the Southern Annular Mode on Southern Ocean circulation and biology, *Geophys. Res. Lett.*, *32*, L11603, doi:10.1029/2005GL022727.
- Marshall, G. J. (2003), Trends in the Southern Annular Mode from observations and reanalyses, *J. Clim.*, *16*, 4134–4143.
- Marti, O., et al. (2006), The new IPSL climate system model: IPSL-CM4, *Note Poles Model*, *26*, Inst. Pierre Simon Laplace, Paris.
- Metzl, N. (2009), Decadal increase of ocean carbon dioxide in southern Indian Ocean surface waters (1991–2007), *Deep Sea Res., Part II*, doi:10.1016/j.dsr2.2008.12.007, in press.
- Perlwitz, J., S. Pawson, R. L. Fogt, J. E. Nielsen, and W. D. Neff (2008), Impact of stratospheric ozone hole recovery on Antarctic climate, *Geophys. Res. Lett.*, *35*, L08714, doi:10.1029/2008GL033317.
- Orr, J. C., et al. (2005), Anthropogenic ocean acidification over the twenty-first century and its impact on calcifying organisms, *Nature*, *437*, 681–686.
- Randel, W. J., and F. Wu (2007), A stratospheric ozone profile data set for 1979–2005: Variability, trends, and comparisons with column ozone data, *J. Geophys. Res.*, *112*, D06313, doi:10.1029/2006JD007339.
- Raven, J., et al. (2005), Ocean acidification due to increasing atmospheric carbon dioxide, policy document, R. Soc., London.
- Riebesell, U., et al. (2000), Reduced calcification of marine plankton in response to increased atmospheric CO<sub>2</sub>, *Nature*, *407*, 364–367.
- Son, S.-W., et al. (2008), The impact of stratospheric ozone recovery on the Southern Hemisphere westerly jet, *Science*, *320*, 1486–1489.
- Song, Y., and W. A. Robinson (2004), Dynamical mechanisms for stratospheric influences on the troposphere, *J. Atmos. Sci.*, *61*, 1711–1725.
- Sunda, W. G., and S. A. Huntsman (1997), Interrelated influence on iron, light, and cell size on marine growth, *Nature*, *390*, 389–392.
- Takahashi, T., et al. (2009), Climatological mean and decadal change in surface ocean pCO<sub>2</sub>, and net sea-air CO<sub>2</sub> flux over the global oceans, *Deep Sea Res., Part II*, doi:10.1016/j.dsr2.2008.12.009, in press.
- Timmerman, R., et al. (2005), On the representation of high latitude processes in the ORCA-LIM global coupled sea ice-ocean model, *Ocean Modell.*, *8*, 175–201.
- Wanninkhof, R. (1992), Relationship between wind speed and gas exchange over the ocean, *J. Geophys. Res.*, *97*, 7373–7382.
- L. Bopp, P. Cadule, and A. Tagliabue, LSCE, IPSL, CEA, UVSQ, CNRS, F-91191 Gif-sur-Yvette, France.
- F. Codron, LMD, IPSL, UPMC, X, ENS, CNRS, F-75252 Paris, France.
- A. Lenton and N. Metzl, LOCEAN, IPSL, UPMC, MHNH, IRD, CNRS, F-75005 Paris, France. (andrew.lenton@locean-ipsl.upmc.fr)
- J. Le Sommer, LEGI, UJF, INPG, CNRS, F-38041 Grenoble, France.