



# The effect of the aspect ratio of carbon nanotubes on their effective reinforcement modulus in an epoxy matrix

A. Martone, G. Faiella, V. Antonucci, M. Giordano, M. Zarrelli

## ► To cite this version:

A. Martone, G. Faiella, V. Antonucci, M. Giordano, M. Zarrelli. The effect of the aspect ratio of carbon nanotubes on their effective reinforcement modulus in an epoxy matrix. *Composites Science and Technology*, 2011, 10.1016/j.compscitech.2011.04.002 . hal-00753184

**HAL Id: hal-00753184**

**<https://hal.science/hal-00753184>**

Submitted on 18 Nov 2012

**HAL** is a multi-disciplinary open access archive for the deposit and dissemination of scientific research documents, whether they are published or not. The documents may come from teaching and research institutions in France or abroad, or from public or private research centers.

L'archive ouverte pluridisciplinaire **HAL**, est destinée au dépôt et à la diffusion de documents scientifiques de niveau recherche, publiés ou non, émanant des établissements d'enseignement et de recherche français ou étrangers, des laboratoires publics ou privés.

## Accepted Manuscript

The effect of the aspect ratio of carbon nanotubes on their effective reinforcement modulus in an epoxy matrix

A. Martone, G. Faiella, V. Antonucci, M. Giordano, M. Zarrelli

PII: S0266-3538(11)00122-9  
DOI: [10.1016/j.compscitech.2011.04.002](https://doi.org/10.1016/j.compscitech.2011.04.002)  
Reference: CSTE 4959

To appear in: *Composites Science and Technology*

Received Date: 22 December 2010  
Revised Date: 30 March 2011  
Accepted Date: 3 April 2011

Please cite this article as: Martone, A., Faiella, G., Antonucci, V., Giordano, M., Zarrelli, M., The effect of the aspect ratio of carbon nanotubes on their effective reinforcement modulus in an epoxy matrix, *Composites Science and Technology* (2011), doi: [10.1016/j.compscitech.2011.04.002](https://doi.org/10.1016/j.compscitech.2011.04.002)



This is a PDF file of an unedited manuscript that has been accepted for publication. As a service to our customers we are providing this early version of the manuscript. The manuscript will undergo copyediting, typesetting, and review of the resulting proof before it is published in its final form. Please note that during the production process errors may be discovered which could affect the content, and all legal disclaimers that apply to the journal pertain.

# The effect of the aspect ratio of carbon nanotubes on their effective reinforcement modulus in an epoxy matrix.

A. Martone, G. Faiella, V. Antonucci, M. Giordano\* and M. Zarrelli

Institute for Composite and Biomedical Materials, CNR P.le Fermi 1 80055 Portici (NA) –Italy

## Abstract

The potentiality of carbon nanotubes as reinforcement material is not only due to their exceptional high modulus, but also to their high aspect ratio. Indeed, the nanotubes contribution to the mechanical reinforcement in a polymer is strongly dependent on their distribution within the hosting matrix. In fact, the clustering of carbon nanotubes does limit the theoretical enhancement of the composite mechanical properties by a reduction of their effective aspect ratio.

In this work, the reinforcement efficiency of carbon nanotubes having different aspect ratios has been experimentally investigated at low filler contents in an epoxy system. From a theoretical point of view, the classical theory (Cox, 1952) concerning the mechanical efficiency of a matrix embedding finite length fibers has been modified by introducing the tube-to-tube Random Contact Model (Philippe, 1996) which explicitly accounts for the progressive reduction of the tubes effective aspect ratio as the filler content increases. The validity of the proposed model was assessed by a comparison with available literature data, providing a good agreement.

*Keywords: A. carbon nanotubes, nanocomposites, mechanical properties.*

---

\* Corresponding authors:

Prof. Michele Giordano  
Institute for Composite and Biomedical Materials, CNR  
P.le Fermi 1 80055 Portici (NA) –Italy  
e-mail address: [gmichele@unina.it](mailto:gmichele@unina.it)  
Phone: +39 0817758823  
Fax : +39 081 7758850

## 1. Introduction

Several studies have sought to verify the reinforcement effect of carbon nanotubes in thermoplastic or thermosetting polymer systems [1-5]. Although in the last two decades an extensive work has been carried out on the mechanical properties of carbon nanotubes (CNT) reinforced polymer matrices [6-8], many issues remain still unclear. As a general conclusion, the reinforcement contribution by nanotubes does not depend only on their dispersed filler content within the hosting matrix, but also on their state of dispersion [9-10] and on the interfacial adhesion matrix/filler [11, 12]. The potentiality of carbon nanotubes as reinforcement for polymer matrix is primarily due to their exceptional mechanical properties [13], very high aspect ratio and specific surface to volume ratio [14, 15]. Some excellent review articles have been published on this topic in the last years [16, 17]. Some of the physical properties of carbon nanotube composites which rely on the nano-particle connectedness, such as electrical or thermal conductivity [18, 19], have been already modeled by using percolation theory which is a statistical topological approach, describing the formation of an infinite cluster of contacting high aspect ratio particles by means of their random distribution [20]. Percolation thresholds experimentally evaluated are strongly affected by inter-particles interaction potential, that plays a role in the actual organization of the nanotubes network [21]. However, the scaling law between critical volume fraction at statistical percolation transition,  $\phi_{ST}$ , and filler aspect ratio, AR, enables us to identify a specific upper bound for the filler content at which a percolative cluster may appear in a composite with random distributed nanotubes, as follows [17]:

$$\phi_{ST} = 0.5 \cdot AR^{-1} \quad 1$$

Different scaling laws have been theoretically proposed in the case of oriented high aspect ratio filler, that strongly depend on the maximum disorientation angle [22]. In

these cases orientation of the filler results in a significant increase of the percolative threshold. However, it was experimentally found out that CNTs composites mechanical modulus does not show any critical scaling that could be related to the onset of the percolation. Moreover, the enhancement of mechanical properties as expected from the rule of mixture is not achieved, due to the occurrence of tubes aggregation and their networking that may constitute a defect causing a loss of mechanical properties even at concentrations lower than percolative ones. From the theoretical point of view, predictive models of mechanical property for CNT reinforced polymer composites are still a current issue. In the mechanical modeling of CNTs composites many authors considered nanotubes as short “tiny” fibers [23, 24]. Most of the classical approaches for short fibers reinforced polymers [25-27] have been used to predict strength and elastic modulus of CNTs composites. Odegard et al. [28] considered Mori-Tanaka model for predicting the mechanical behavior of nanocomposites at different filler volume fractions, while approaches based on the micromechanics of the Halpin-Tsai rule have been proposed to describe the effects of different filler lengths and distributions [29-31]. Yeh et al. investigated the effect of the filler network by modifying the Halpin-Tsai rule through the introduction of an exponential shape factor [32]. In the attempt of describing the non linear increment of the elastic modulus with the CNTs content, Omidi et al. [33] modified the Cox/Carmann- Reifsnider rule of mixtures by introducing an exponential shape function, a length efficiency parameter, an orientation efficiency factor and a waviness parameter.

In this context, here the mechanical properties of CNTs composites produced using Multi Walled Carbon Nanotubes (MWCNT) having different nominal aspect ratios (AR=29, 55, 505) have been studied. The concentration of MWCNTs used for the composites production are in the range of their statistical percolation transition. Non

linear relationships between the filler content and the nanocomposites modulus have been found. A modeling analysis investigating the effect of the aspect ratio on the tubes reinforcement mechanism has been carried out. In particular, a model based on Cox theory describing the efficiency of the load transfer between matrix and nanotubes has been proposed, where the nanotubes have been considered as fibers having a nominal aspect ratio [25]. This model accounts for the progressive reduction of the tubes effective aspect ratio upon an increase of filler content (Random Contact model [33]) as well as for their waviness. Finally, model predictions have been compared with present experimental data and with available literature data finding a good agreement.

The paper is organized as follows: in sections 2 and 3, materials and fabrication techniques are described together with experimental results resulting from a mechanical characterization of the CNTs epoxy composites. In section 4, a discussion about experimental findings is presented and considered as the basis for the formulation of the model detailed in the section 5. Section 6 shows the model calculations and a comparison between the derived predictions and the experimental data. Finally, a summary of the main results of the work is given in section 7.

## **2. Material and Experimental Methods**

The tubes have been used as received, without any purification treatment: NC7000 MWCNT (length 0.1-10  $\mu\text{m}$ , diameter 10 nm, Aspect Ratio 10-1000,  $AR_{\text{avg}}$  505) from Nanocyl (Belgium), 659258 MWCNT (length 5-9  $\mu\text{m}$ , diameter 110-170 nm, Aspect Ratio 30-80,  $AR_{\text{avg}}$  55) and 636843 MWCNT (length 0.5-2.0  $\mu\text{m}$ , diameter 40-70 nm, Aspect Ratio 7-50,  $AR_{\text{avg}}$  29) from Aldrich. Epoxy composites with nanotubes content in the range 0.025 to 3.4 MWCNT volume% have been produced. The nanotubes have been dispersed in the monocomponent aeronautical grade epoxy matrix RTM6 from Hexcel Composites. This epoxy system is generally used for liquid infusion processes

and is characterized by a high ultimate glass transition temperature (200 °C) and low viscosity (50 mPa·s) within the range 100 °C-120 °C. Nanocomposites manufacturing procedure consists of three different steps: a) ultrasonication of nanotubes and matrix by a dipping tip sonicator (Misonix S3000) for 60 minutes at a constant temperature (120 °C); b) degassing for 30 minutes at 80 °C; c) cure for 1 hour at 160 °C and post-cure for 2 hours at 180 °C. The production method has been properly designed for a good dispersion of pristine nanotubes aggregates. Further details are reported elsewhere [10]. Nanocomposite specimens with nominal dimensions of 60x10x2 mm were mechanically tested under three points bending mode by TA2980 DMA, at a constant temperature lower than  $T_g$  (80 °C) and at a fixed maximum strain of 200  $\mu\epsilon$ . Two-point electrical conductivity measurements were performed in direct current mode on 1 mm thick composite samples, through the thickness direction by means of a pico-ammeter connected to Signatone 1160 probe station. Electrodes, consisting of 50 mm<sup>2</sup> of circular area, were realized on the flat sample surfaces by using conductive silver paint. Transmission Optical Microscopy analysis was carried out by using a microscope Olympus system type BX51 on samples of dimensions 10 by 10 mm and 200 $\pm$ 20  $\mu$ m thick.

### 3. Experimental Results

Figure 1a shows the bending modulus,  $E_c$ , as a function of the nanotubes volume%,  $\phi$ , for the three averaged aspect ratios: AR=29, 55, 505. In the following the three different nanocomposite systems will be identified as AR29, AR55 and AR505, respectively.

The neat epoxy matrix modulus is  $E_m=2.68\pm0.20$  GPa. In all cases, the rule of mixture for the bending modulus does not hold. In fact, the composite bending modulus as function of MWCNT content exhibits a highly non linear trend with a maximum value for each nanocomposite system. Electrical conductivity measurements can be suitably

used to evaluate the level of connectedness of the conductive fillers. Hence, the electrical properties of the composites have been used to estimate the filler content at which contacts between tubes enable the formation of a percolative path. The experimentally found percolation thresholds are:  $\phi_e^{505}=0.06$  volume%,  $\phi_e^{55}=2.03$  volume%,  $\phi_e^{29}=1.35$  volume%. Composites produced using AR=29 nanotubes showed a deep increase of viscosity at low MWCNTs content, making impossible the manufacturing of composites with concentrations higher than 1.35 volume%. Hence, this sort of rheological percolation threshold has been assumed as the electrical percolative one. The effective reinforcement modulus,  $E_\eta$ , has been calculated from the rule of mixture for the composite modulus,  $E_c$ , as follows:

$$E_\eta = \frac{E_c - E_m}{\phi} + E_m \quad 2$$

In figure 1b  $E_\eta$  is plotted as a function of a normalized quantity,  $\phi/\phi_e$ , that is the ratio between the filler volume fraction and the electrical percolation threshold specific for each system. The effective reinforcement modulus,  $E_\eta$ , is a monotonic decreasing function of nanotubes volume fraction for each aspect ratio. Carbon nanotubes contribute to the composites mechanical stiffness with an effective modulus that decreases with the aspect ratio in the low concentration region. In figure 1b the decrease of the effective reinforcement modulus occurs before the ratio  $\phi/\phi_e$  is equal to 1, leading to the conclusion that the progressive development of the nanotubes network within the matrix does affect the mechanical efficiency of the filler even below the formation of the percolative path. Figure 2 shows optical microscopy images of the 0.57-0.67-2.03 MWCNT volume% samples containing AR55 nanotubes (diameters 110-170 nm). For these filler contents nanocomposites are non conductive demonstrating that a percolative tube network is not present within the matrix. The high diameter of the



AR55 MWCNTs allows the observation of single tubes, their bundling and clustering directly by the optical microscope. Although a quantitative analysis of the topological features of nanotubes network is out of the scope of the present work, it clearly comes out from figure 2 that the number of contacts among nanotubes increases as their content increases. Moreover, the nanotubes curvature (waviness) is also observable as already showed for other similar nanocomposite [34, 35].

#### **4. Experimental data analysis**

While nanocomposites electrical conductivity has been widely characterized by a percolation transition between insulator and conductor behavior, the flexural modulus has been found to undergo a continuous decrease upon an increase of CNTs content, without any step transition. Experimental data show that as the nano-filler content increases, the reinforcement efficiency of MWCNT progressively reduces, highlighting a different effect of the tubes networking on the mechanical modulus, if compared to the electrical property. In fact, while contacts between tubes are essential for the electron transport, their occurrence contemporary reduces the stress transfer of the matrix due to the reduction of both the particle distance and the aspect ratio [20]. Furthermore, it is worth noting that the effective reinforcement modulus shows the same behavior, even in a sub percolative regime, where you don't expect a significant number of contacts between tubes.

#### **5. Modeling**

In this section, a model is proposed accounting for the two main experimental findings:

- 1) the dependence of the effective reinforcement modulus upon the tubes aspect ratio and
- 2) the continuous reduction of tubes mechanical efficiency due to tube-to-tube contacts as their content increases in the nanocomposite.

##### **5.1 Aspect ratio**

Shear lag based models are widely used to analyze the effect of the aspect ratio on mechanical properties of carbon nanotubes composites. Moreover, despite some serious theoretical flaws, they have enjoyed enduring popularity, perhaps because of their algebraic simplicity and ability to describe physical properties changes [24]. Cox [25] introduced the concept of the effective tensile modulus of a short fiber embedded in a matrix by defining the efficiency,  $\eta$ , as the ratio between the effective reinforcement modulus of the nanotubes in the matrix and their intrinsic modulus. The model, as interpreted by Carman and Reifsnider [26], describes the effect of the fiber aspect ratio upon its reinforcing efficiency in a composite. The complete set of equations is:

$$\begin{aligned} E_c &= E_\eta \cdot \phi + E_m \cdot (1 - \phi) \\ E_\eta &= \eta \cdot E_{NT} \\ \eta &= 1 - \frac{\tanh(K \cdot AR)}{(K \cdot AR)} \\ K &= \sqrt{\frac{-\frac{2}{1+\nu_m}}{\frac{E_{NT}}{E_m} \cdot \ln(\phi)}} \end{aligned} \quad 3$$

Figure 3a shows the comparison between the calculation from eq. 3 and experimental data of the effective reinforcement modulus,  $E_\eta$ , at the lowest nanotubes concentration for each type of nanocomposite and using a Poisson ratio of the matrix,  $\nu_m$ , equal to 0.22. In the model, nanotubes modulus has been set to  $E_{NT}=3$  TPa, that is between the highest measured value for MWCNT, 2.437 TPa [36] and the one evaluated for Double Walled Carbon Nanotubes, 3.147 TPa [15]. Moreover Treacy et al.[13] measured a Young's modulus up to 4.15 TPa for generic arc produced nanotubes. In the numerical simulations, volume fraction of nanotubes has been set to a value equal to  $10^{-3} \phi_{ST}$  in order to investigate the mechanical properties in a very dilute regime. In addition to the three sets of used MWCNTs the bending modulus of a composite with 0.03 volume% of Nanocyl NC3150 having a nominal aspect ratio of 100 is also reported. In figure 3a,

continuous line depicts the prediction curve in the case of isolated carbon nanotubes, thus having an averaged number of contacts with other nanotubes,  $\langle c \rangle$ , equal to zero. Dotted line is the model prediction curve where the effective reinforcement modulus is calculated from equations 3 using an effective aspect ratio,  $AR_e$  calculated as:

$$AR_e = \frac{AR}{1 + \langle c \rangle} \quad 4$$

with  $\langle c \rangle = 2$ . In fact, because of the occurrence of contacts between tubes, the eq.4 takes into account the reduction of the aspect ratio as a result of contacting nanotubes. As a preliminary conclusion, from the analysis of the data in figure 3a, we can say that experimentally measured bending moduli of composites at very low concentrations of carbon nanotubes with different aspect ratios are bounded by a very simple modification of the Cox model that accounts for possible contacts between tubes.

## 5.2 Contacts model

Packing of high aspect ratio particles has been subjected to few investigations till the work of Philipse [33] that introduced the Random Contact Model. Philipse model is based on the assumption that two particles of any shape can contact with a probability which is independent on other contacts formation. The theory states that the average number of contacts per particle  $\langle c \rangle$  is dependent on the average excluded volume,  $V_{ex}$ , and the particles volume fraction,  $\phi$ , according to the following expression:

$$\langle c \rangle = \phi \cdot \frac{V_{ex}}{V_p} \quad 5$$

where  $V_p$  is the volume of the particle. The excluded volume of an object is defined as the volume around an object into which the center of another similar object is not allowed to enter if overlapping of the two objects has to be avoided [37]. A detailed report on the Random Contact Model developments and on the different theory related

to the excluded volume is beyond the scope of this work, therefore the interested readers may refer to works citing Philipse, 1996 [33] and Onsager, 1949 [37], respectively.

According to Onsager, the average excluded volume of a pair of random rods, modeled by cylinders of length  $L$  with two hemispherical caps of diameter  $D$ , is given by

$$V_{ex} = \frac{\pi}{2} \cdot L^2 D + 2\pi \cdot D^2 L + \frac{4}{3} \pi \cdot D^3 \quad 6$$

thus the average number of contacts  $\langle c \rangle$  for tubes is dependent on their aspect ratio:

$$\langle c \rangle = w \cdot \phi \cdot \left( 4 + \frac{3AR^2}{3AR + 2} \right), \quad w = \frac{V_{ex}^{effective}}{V_{ex}} \quad 7$$

where the waviness,  $w$ , has been introduced in order to account for the carbon nanotubes curvature within the real composite and defined as the ratio between the effective average excluded volume for a waived rod,  $V_{ex}^{effective}$ , and that evaluated for a straight rod,  $V_{ex}$ . Significant theoretical efforts have been made to investigate the effect of the rod waviness on the excluded volume. [38-43]. However, these studies are limited by the assumption of fixed and defined rod shapes and cannot be generalised to curved rod of any shape [44]. Accordingly to literature, the variation of the excluded volume due to nanotubes curvature has been here accounted for by introducing the waviness parameter,  $w$ . The efficiency,  $\eta$ , calculated from the shear lag model together with the Random Contact models (eqs. 3, 4, 7) for tubes having aspect ratio  $AR=1000$  have been reported in figure 3b. On the same graph, the values of  $\eta$  derived from experimental data related to AR505 composites are also reported. It can be observed that shear lag theory alone ( $w=0$ ) seems to be unable to model the observed reduction of mechanical reinforcement efficiency of carbon nanotubes as a function of their increasing content. However, contacts among nanotubes, as introduced by the Philipse model ( $w=1$ ), reduce the mechanical efficiency of the tubes because of the progressive reduction of the CNTs

effective aspect ratio. Furthermore, the waviness parameter may efficiently modulate the reduction of mechanical reinforcement efficiency by modulating the average number of contacts between nanotubes due to their curvature within the composite.

## **6. Model testing**

### **6.1 Experimental data**

Figure 4a shows the model calculations of the effective reinforcement modulus,  $E_{\eta}$ , for the three types of MWCNT considered in this work. The model is able to be fitted to the experimental data in all the cases investigated for very different aspect ratios CNTs. For the best fitting of the experimental data, aspect ratios of the nanotubes have been considered varying on three levels within the range reported in the material data sheet for each type of nanotubes, identified by the extremes and the averaged values of the aspect ratio. The model parameters adopted for these simulations are the CNTs elastic modulus kept constant at the value of 3 TPa and the waviness that has been left to vary with the CNTs aspect ratio. Best fitting parameters are shown in table 1.

### **6.2 Data from literature**

The model has been applied to experimental data available from literature [32, 45, 46, 31, 47]. Table 1 reports the details of CNTs nanocomposites considered for the comparison with the model predictions, in terms of polymer matrix and nanotubes characteristics. Table 1 also shows the best fitting parameters for the nanotubes aspect ratio,  $AR_i$ , and the waviness,  $w$ . Figure 4b shows the model calculations of the nanocomposite modulus,  $E_c$ , compared to experimental data from different literature sources. Simulation has been also performed by using the Nairn correction [48] to the Cox model resulting in a better estimate of the composite modulus curves.

### 6.3 Waviness parameter

Figure 5 shows the waviness parameter versus the aspect ratio (data shown in table 1). The attempt of defining an unique parameter, the waviness,  $w$ , i.e. the change of the excluded volume due to the nanotubes curvature, irrespective of the real shape and of the curliness (magnitude of curvature) of the nanotubes was expected to fail. On the contrary, data in figure 5 have shown that the waviness is a function only of the aspect ratio: no information on the particular shape and on the magnitude of the curvature are apparently needed for the correlation. In particular, a scaling law of power two is reported in figure 5, for a range of aspect ratios  $10 \div 100$  followed by a cut off at higher aspect ratio values. In order to give a possible explanation, we considered the buckling instability typical for carbon nanotubes. In a straight rod with high aspect ratio, a curvature is produced when axial compression or bending loads overcome the buckling limit. This property has a power dependence of two upon the aspect ratio and this result was found also for CNTs [49]. Moreover, from the topological point of view, Dalmas et al., 2006 [41] have shown that excluded volume is not very much influenced by the curliness in the aspect ratio range  $10 \div 100$ . Further experiments have been planned to better understand the behavior in the aspect ratio range 100-1000.

## 7. Conclusions

The reinforcement effect of MWCNTs with three different aspect ratios in an epoxy matrix has been experimentally investigated on composites produced at low tubes concentrations within the range of electrical percolation transition. The nanocomposites bending modulus does not obey to the linear rule of mixture, showing a non monotonic dependency on tubes content. Moreover, a gradual reduction of the effective reinforcement modulus of the carbon nanotubes,  $E_{\eta}$ , with the volume content in the composite has been observed over the whole range of investigated concentrations, even

before the electrical percolation onset. In fact, a progressive reduction of the tubes effective aspect ratio occurs because of the increasing connectedness between tubes upon an increase of their concentration. This provides a continuous decrease of the efficiency of the stress transfer between the reinforcing filler and the matrix. From the theoretical point of view, a model for the prediction of the mechanical modulus of nanotubes reinforced composites has been proposed, that mainly accounts for the effect of the filler aspect ratio by the classical short fibers micromechanics Cox theory and for the progressive reduction of the filler effective aspect ratio by the Philipse theory on random contacts in elongated, straight particles ensemble. The effect of nanotubes curvature on the average contacts number between tubes has been introduced by means of the waviness that accounts for the deviation from the straight particles assumption. The model is able to quantitatively reproduce the reinforcement behavior of the investigated composites based on different aspect ratios carbon nanotubes. The model has been further compared to experimental data found in literature on several types of composites with different matrices and broad aspect ratio distributions of the carbon nanotubes providing a good agreement.

## References

- 1 Gong XY, Baskaran S, Voise RD, Young JS. Surfactant-Assisted Processing of Carbon Nanotube/Polymer Composites. *Chem Mat* 2000;2:1049-52
- 2 Qian D, Dickey EC. Load transfer and deformation mechanisms in carbon nanotube-polystyrene composites. *Appl Phys Lett* 2000;76:2868-70
- 3 Bai JB. Evidence of the reinforcement role of chemical vapour deposition multi-walled carbon nanotubes in a polymer matrix. *Carbon* 2003;41:1325-28
- 4 Cadek M, Coleman JN, Ryan KP, Nicolosi V, Bister G, Fonseca A, Nagy JB, Szostak K, Beguin F, Blau W. Reinforcement of Polymers with Carbon Nanotubes: The Role of Nanotube Surface Area. *Nano Lett* 2003;4(2):353-6
- 5 Cooper CA, Young RJ, Halsall M. Investigation into the deformation of carbon nanotubes and their composites through the use of Raman spectroscopy. *Comp Part A: Appl Sci Manuf* 2001;32:93-102
- 6 Ajayan PM, Schadler LS, Braun PV. Nanocomposite science and technology WILEY-VCH Verlag 2003

- 7 Thostenson ET, Li CY, Chou TW. Nanocomposites in Context. *Compos Sci Technol* 2005;65: 491-516
- 8 Moniruzzaman M, Winey KI. Polymer Nanocomposites containing Carbon Nanotubes. *Macromolecules* 2006;39(16):5194-205
- 9 Zhou Y, Pervin F, Lewis L, Jeelani S. Fabrication and characterization of carbon/epoxy composites mixed with multi-walled carbon nanotubes. *Mater Sci Eng A* 2008;475:157-65
- 10 Martone A, Formicola C, Giordano M, Zarrelli M. Reinforcement efficiency of multi-walled carbon nanotube/epoxy nano composites. *Compos Sci Technol* 2010;70:1154-60
- 11 Lachman N, Wagner HD. Correlation between interfacial molecular structure and mechanics in CNT/epoxy nano-composites. *Composites: Part A* 2010;41:1093-109
- 12 Sui X-M, Wagner HD. Tough nanocomposites: the role of carbon nanotube type. *Nano Lett* 2009;9(4):1423-6
- 13 Treacy MMJ, Ebbesen TW, Gibson JM. Exceptionally high Young's modulus observed for individual carbon nanotubes. *Nature* 1996;381:678-80
- 14 Hussain F, Hojjati M, Okamoto M, Gorga RE. Review article: Polymer-matrix Nanocomposites, Processing, Manufacturing, and Application: An Overview. *J Comp Mater* 2006;40:1511-75
- 15 Coleman JN, Khan U, Blau WJ, Gun'ko YK. Small but strong: A review of the mechanical properties of carbon nanotube-polymer composites. *Carbon* 2006;44:1624-52
- 16 Thostenson ET, Li C, Chou TW. Nanocomposites in context. *Compos Sci Technol* 2005;65:491-516
- 17 Bauhofer W, Kovacs JZ. A review and analysis of electrical percolation in carbon nanotube polymer composites. *Compos Sci Technol* 2009;69:1489-98
- 18 Faiella G, Piscitelli F, Lavorgna M, Antonucci V, Giordano M. Tuning the insulator to conductor transition in a multiwalled carbon nanotubes/epoxy composite at substatistical percolation threshold. *Appl Phys Lett* 2009;95:153106-3
- 19 Stauffer G. Introduction to percolation theory. Taylor & Francis, London (1985)
- 20 Vigolo B, Coulon C, Maugey M, Zakri C, Poulin P. An Experimental Approach to the Percolation of Sticky Nanotubes Science. 2005;309(5736):920-3
- 21 Valvalla PK, Odegard GM Modelling techniques for determination of mechanical properties of polymer composites *Rev Adv Mater Sci* 2005; 9, 34-44
- 22 Celzard A, Deleuze C, Dufort M, Furdin G, Marêché JF, McRae E. On the critical concentration in percolating systems containing a high aspect ratio filler. *Phys Rev B* 1996;53:6209-14.
- 23 Shokrieh MM, Rafiee R. A review of the mechanical properties of isolated carbon nanotubes and carbon nanotube composites. *Mech Compos Mater* 2010;46:155-72
- 24 Tucker CL, Liang E. Stiffness predictions for unidirectional short-fiber composites: Review and Evaluation. *Compos Sci Technol* 1999;59:655-71
- 25 Cox HL. The elasticity and strength of paper and other fibrous materials. *Br J Appl Phys* 1952;3:72-79
- 26 Carman GP, Reifsnider KL. Micromechanics of short-fibre composites. *Compos Sci Technol* 1992;43:137-46
- 27 Odegard GM, Gates TS, Wise KE, Park C, Siochi EJ. Constitutive modeling of nanotube-reinforced polymer composites. *Compos Sci Technol* 2003;63:1671-81
- 28 Thostenson ET, Chou TW. On the elastic properties of carbon nanotube-based composites: modeling and characterization. *J Phys D: Appl Phys* 2003;36:573-82



- 29 Deng H, Bilotti E, Zhang R, Peijs T. Effective Reinforcement of Carbon Nanotubes in Polypropylene Matrices. *J Appl Polym Sci* 2010;119:30-41
- 30 Shokrieh MM, Rafiee R. Investigation of nanotube length effect on the reinforcement efficiency in carbon nanotube based composites. *Compos Struct* 2010;92:2415-20
- 31 Yeh MK, Tai NH, Liu JH. Mechanical behaviour of phenolic-based composite materials. *Carbon* 2006;44:1-9
- 32 Omid M, Hossein Rokni DT, Milanib AS, Seethalerb RJ, Arastehe R. Prediction of the mechanical characteristics of multi-walled carbon nanotube/epoxy composites using a new form of the rule of mixtures. *Carbon* 2010;48:3218-28
- 33 Philipse AP. The random contact equation and its implications for (Colloidal) rods in packings, suspensions and anisotropic powders. *Langmuir* 1996;12:1127-33
- 34 Fisher FT, Bradshaw RD, Brinson LC. Effects of nanotube waviness on the modulus of nanotube-reinforced polymers. *Appl Phys Lett* 2002;80:4647-49
- 35 Li C, Thostenson ET, Chou TW. Effect of nanotube waviness on the electrical conductivity of carbon nanotube-based composites. *Compos Sci Technol* 2008;68:1445-52
- 36 Lourie O, Wagner HD. Evaluation of Young's modulus of carbon nanotubes by micro-Raman spectroscopy. *J Mater Res* 1998;13:2418-22
- 37 Onsager L. The Effects of Shape on the interaction of colloidal particles. *Annals of the New York Academy of Sciences* 1949;51:627-59
- 38 Ma HM, Gao X-L. A three-dimensional Monte Carlo model for electrically conductive polymer matrix composites filled with curved fibers. *Polymer* 2008;49:4230-38
- 39 Yi1 YB, Berhan1 L, Sastry AM. Statistical geometry of random fibrous networks, revisited: Waviness, dimensionality, and percolation. *J Appl Phys* 2004;96:1318-27
- 40 Berhan1 L, Sastry AM. Modeling percolation in high-aspect-ratio fiber systems. II. The effect of waviness on the percolation onset. *Phys Rev E* 2007;75:041121-7
- 41 Dalmas F, Dendievel R, Chazeau L, Cavaille JY, Gauthier C. Carbon nanotube-filled polymer composites. Numerical simulation of electrical conductivity in three-dimensional entangled fibrous networks. *Acta Mater* 2006;54:2923-31
- 42 Li C, Chou T-W. Continuum percolation of nanocomposites with fillers of arbitrary shapes. *Appl Phys Lett* 2007;90:174108-10
- 43 Wagner N, Balberg I, Klein D. Monte Carlo Results for Continuum Percolation in Low and High Dimensions. *Phys Rev E* 2006;74:011127-36
- 44 Ma HM, Gao X-L, Benson TT. Monte Carlo modeling of the fiber curliness effect on percolation of conductive composites. *Appl Phys Lett* 2010;96:061910-1
- 45 Kanagaraj S, Varanda FR, Zhiltsova TV, Oliveira MSA, Simoes JAO. Mechanical properties of high density polyethylene/carbon nanotube composites. *Compos Sci Technol* 2007;67:3071-77
- 46 Xiao KQ, Zhang LC, Zarudi I. Mechanical and rheological properties of carbon nanotube-reinforced polyethylene composites. *Compos Sci Technol* 2001;67:177-82
- 47 Ogasawaraa T, Ishidaa Y, Ishikawaa T, Yokota R. Characterization of multi-walled carbon nanotube/phenylethynyl terminated polyimide composites. *Composites: Part A* 2004;35:67-74
- 48 Nairn JA. On the use of shear-lag methods for analysis of stress transfer unidirectional composites. *Mechanics of Materials* 1997;26:63-80
- 49 Chunyu Li, Chou TW. Modeling of elastic buckling of carbon nanotubes by molecular structural mechanics approach. *Mechanics of Materials* 2004;36:1047-105

## List of Figures

**Figure 1-**a) Bending modulus,  $E_c$ , of produced epoxy nanocomposites, as a function of the nanotubes volume% for three different averaged aspect ratios;  
b) Effective reinforcement modulus,  $E_\eta$ , as a function of the ratio between the filler volume fraction and the electrical percolation threshold specific for each system.

**Figure 2-**Optical microscopy images (magnification 50 X) of the: a) 0.57, b) 0.67, c) 2.03 MWCNT volume% samples containing AR55 nanotubes

**Figure 3-** a) Comparison between experimental data and predictions of the effective reinforcement modulus,  $E_\eta$ , calculated using by the shear lag model (eq.3). Continuous and dotted lines are model prediction for “isolated” tubes ( $\langle c \rangle = 0$ ) and for an average number of contacts per tube ( $\langle c \rangle = 2$ ), respectively. Squared symbol refers to a single measure on Nanocyl 3150;

b) Predictions of efficiency,  $\eta$ , for tubes with AR=1000 by shear lag model (Cox) ( $w=0$ ), shear lag (Cox) plus Random Contact Model (Philipse/Onsager) ( $w=1$ ) and for waviness  $w=10$ . Experimental data for carbon nanotubes AR505 are shown for comparison as full dots.

**Figure 4-**a) Effective reinforcement modulus,  $E_\eta$ , for the three types of MWCNT. Lines are the calculations by the Cox/Philipse/Onsager/waviness model;

b) Carbon nanotubes composite moduli obtained by data from literature. Continuous lines are the calculations by the Cox/Philipse/Onsager/waviness model. Broken lines are the calculations by the Nairn/Philipse/Onsager/waviness model.

**Figure 5** -Waviness parameter as a function of the tube aspect ratio.

## List of Tables

**Table 1** - Details of the CNT nanocomposite systems from Literature. Fitting parameters: aspect ratio,  $AR_f$ , and waviness,  $w$ , are shown.

Figure 1

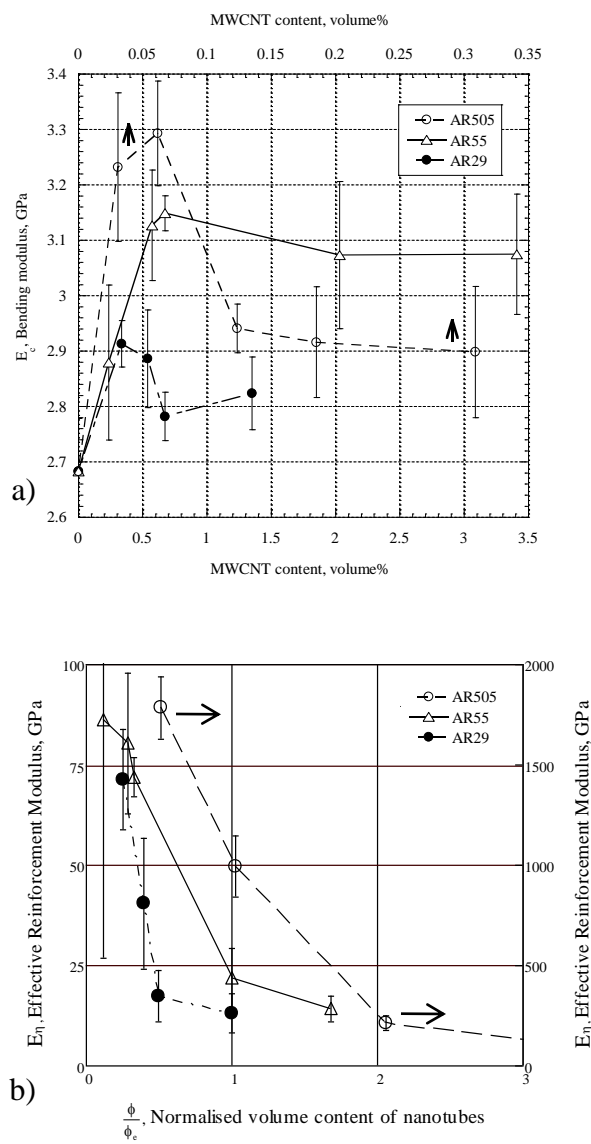


Figure 2

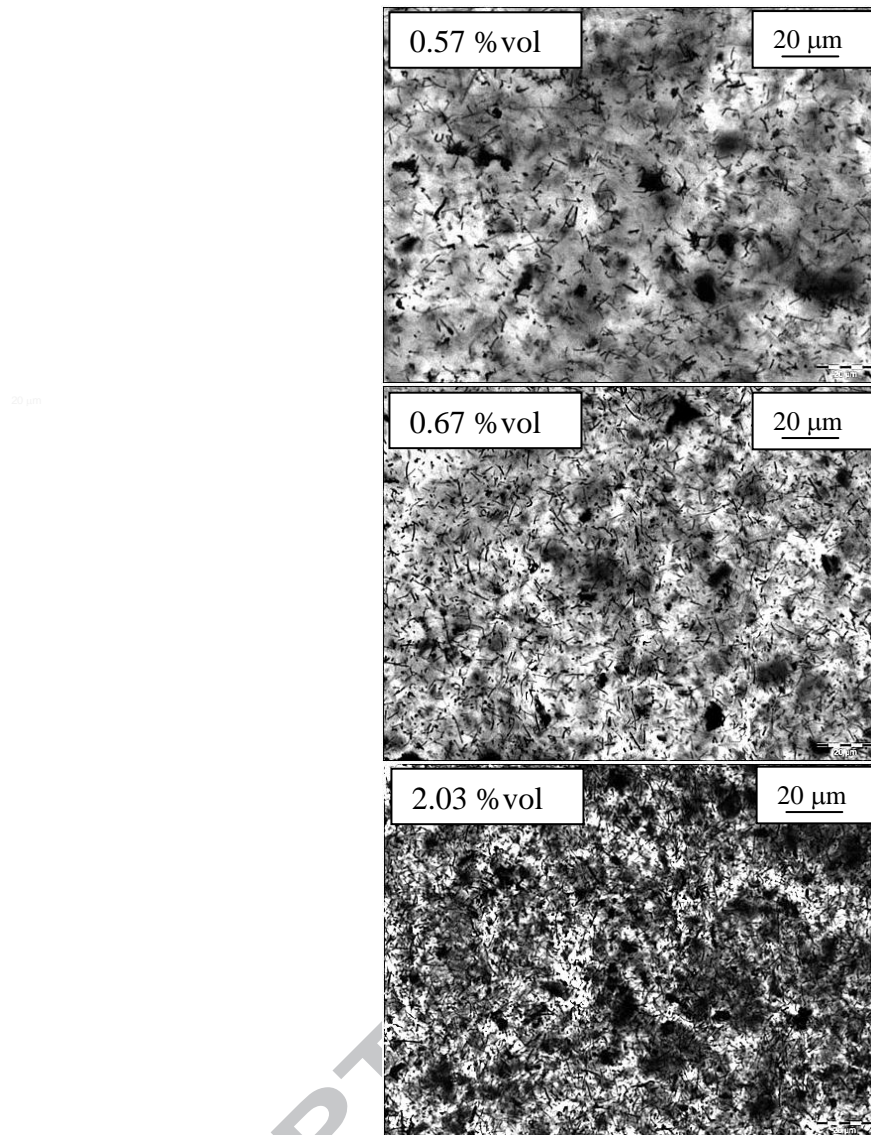


Figure 3

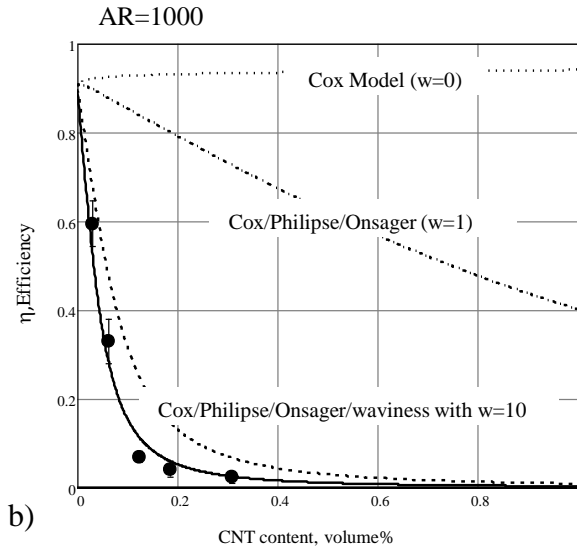
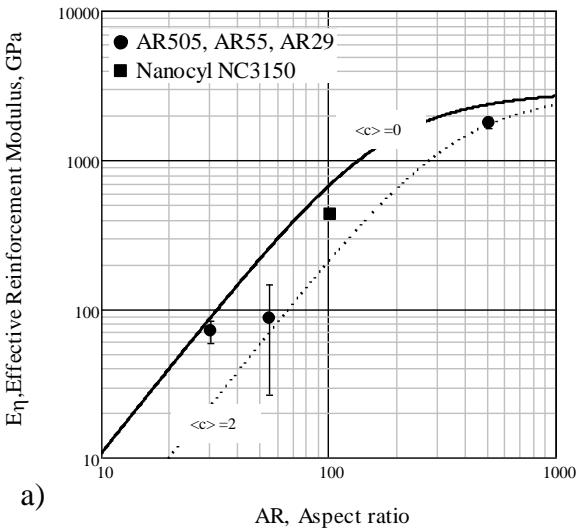


Figure 4

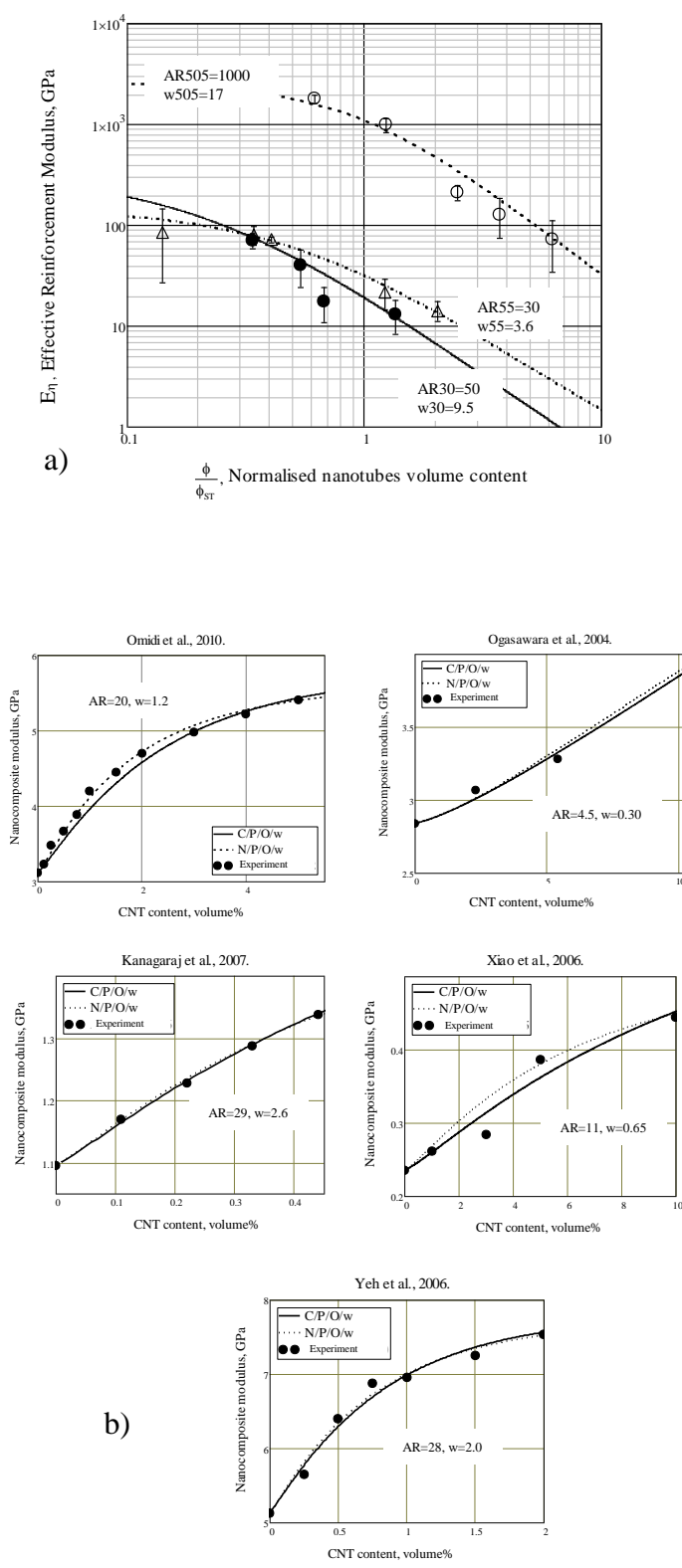
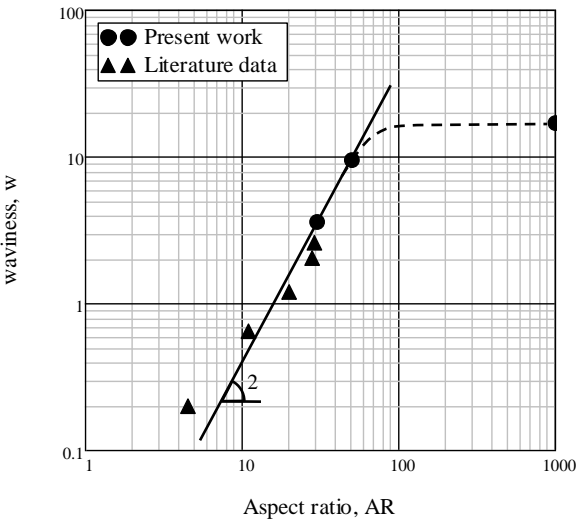


Figure 5



Reference	Matrix	MWNT	Diameter [nm]	AR	Fitting Parameters	
					ARf	w
Present work	Epoxy RTM6	Nanocyl NC7000	10	10-1000	1000	17
Present work	Epoxy RTM6	Aldrich 636843	40-70	7-50	50	9.5
Present work	Epoxy RTM6	Aldrich 659258	110-170	30-80	30	3.6
Kanagaraj et al., 2007 [33]	Polyethylene HDPE	Nanotech CVD	60-100	50-250	29	2.6
Yeh et al., 2006 [25]	Phenolic PF-650	Own CVD	15-40	50-300	28	2.0
Omidi et al., 2010 [28]	Epoxy LY-5052	RIPI CVD	10-50	20-300	20	1.2
Xiao et al., 2007 [34]	Polyethylene LDPE	NanoLab CVD	10-20	50-500	11	0.65
Ogasawara et al., 2004 [35]	Polyimide Tri-A-Pi	CNRI CVD	20-100	10-200	4.5	0.30