



HAL
open science

Multiscale Classification of Remote Sensing Images

Jefersson Alex dos Santos, Philippe-Henri Gosselin, Sylvie Philipp-Foliguet,
Ricardo da Silva Torres, Alexandre Xavier Falcao

► **To cite this version:**

Jefersson Alex dos Santos, Philippe-Henri Gosselin, Sylvie Philipp-Foliguet, Ricardo da Silva Torres, Alexandre Xavier Falcao. Multiscale Classification of Remote Sensing Images. *IEEE Transactions on Geoscience and Remote Sensing*, 2012, 50 (10), pp.3764-3775. hal-00753160

HAL Id: hal-00753160

<https://hal.science/hal-00753160v1>

Submitted on 17 Nov 2012

HAL is a multi-disciplinary open access archive for the deposit and dissemination of scientific research documents, whether they are published or not. The documents may come from teaching and research institutions in France or abroad, or from public or private research centers.

L'archive ouverte pluridisciplinaire **HAL**, est destinée au dépôt et à la diffusion de documents scientifiques de niveau recherche, publiés ou non, émanant des établissements d'enseignement et de recherche français ou étrangers, des laboratoires publics ou privés.

Multi-Scale Classification of Remote Sensing Images

Jefersson Alex dos Santos, Philippe-Henri Gosselin, Sylvie Philipp-Foliguet,
Ricardo da S. Torres and Alexandre Xavier Falcão

Abstract

A huge effort has been applied in image classification to create high quality thematic maps and to establish precise inventories about land cover use. The peculiarities of Remote Sensing Images (RSIs) combined with the traditional image classification challenges made RSIs classification a hard task. Our aim is to propose a kind of boost-classifier adapted to multi-scale segmentation. We use the paradigm of boosting, whose principle is to combine weak classifiers to build an efficient global one. Each weak classifier is trained for one level of the segmentation and one region descriptor. We have proposed and tested weak classifiers based on linear SVM and region distances provided by descriptors. The experiments were performed on a large image of coffee plantations. We have shown in this paper that our approach based on boosting can detect the scale and set of features best suited to a particular training set. We have also shown that hierarchical multi-scale analysis is able to reduce training time and to produce a stronger classifier. We compare the proposed methods with a baseline based on SVM with RBF kernel. The results show that the proposed methods outperform the baseline.

Index Terms

Multi-Scale Classification, Remote Sensing Image, Boosting, Support Vector Machines, Image Descriptors.

I. INTRODUCTION

Since the satellite imagery information became accessible to the civil community in the 1970s, a huge effort has concerned the creation of high quality thematic maps to establish precise inventories about land cover use [1]. However, the peculiarities of Remote Sensing Images (RSIs) combined with the traditional image classification challenges have turned RSIs classification into a hard task.

J. A. dos Santos, R. da S. Torres and A. X. Falcão are with the Institute of Computing, University of Campinas, Brazil email: jsantos@ic.unicamp.br

J. A. dos Santos, P. Gosselin and S.Philipp-Foliguet are with ETIS, CNRS, ENSEA, University of Cergy-Pontoise, France

The use of RSIs as a source of information in agribusiness is very common. In those applications, it is fundamental to know the ground occupation. However, identification and recognition of crop regions in remote sensing images are not trivial tasks. In Brazil, for example, coffee is one of the most important farming. This work, which is part of a Brazilian project involving a cooperative of coffee producers, aims at finding the coffee plantations in remote sensing images. Classification of RSIs meets some specific issues in agriculture. Concerning the identification of coffee areas, the difficulties come from the fact that coffee usually grows in mountainous regions (as in Brazil). Firstly this infers shadows and distortions in the spectral information, which make difficult the classification and the interpretation of shaded objects in the image because the spectral information is either reduced or totally lost [2]. Secondly, the growing of coffee is not a seasonal activity, and, therefore, in the same region, there may be coffee plantations of different ages, which also affects the observed spectral patterns.

Typically, the classification process of RSIs uses supervised learning, which can be divided in the following components: data representation, feature extraction, and training. Data representation indicates the objects for classification (e.g., pixels [3], blocks of pixels [4], regions [5], and hierarchy of regions [6]). Feature extraction provides a mathematical description for each object (for example, spectral characteristics, texture, and shape). Training learns how to separate objects from distinct classes by building a classifier based on machine learning techniques (for instance, support vector machines [7], genetic programming [4], neural networks [8]). The final quality of the classification depends on the performance of each step. For example, the classification result relies on the accuracy of the employed learning techniques. Regarding the performance of learning algorithms, it is directly dependent on the quality of the extracted image features. Finally, features are extracted according to the model used for data representation.

Regardless of the data representation model adopted in supervised classification of RSIs, both the training input and the result of the classifier can be expressed as sets of pixels. In spite of that, data representation cannot rely only on pixels, because their image characteristics are not usually enough to capture the patterns of the classes (regions of interest). In order to bridge that semantic gap, multi-scale image segmentation can play an important role. As pointed out by Trias-Sanz et al. [9], most image segmentation methods use threshold parameters to create a partition of the image. These methods usually create a single-scale representation of the image: small thresholds give segmentation with small regions and many details while large thresholds preserve only the most salient regions. The problem is that various structures can appear at different scales and this segmentation result can be difficult to obtain without prior

knowledge about the data or by using only empirical parameters. It is difficult to define the optimal scale segmentation. Some parts of an image may need a fine segmentation, since the plots are small, whereas, in other parts, a coarse segmentation is sufficient. For this reason, the main drawback of classification methods based on regions is that they depend on the segmentation method used. Moreover, it is difficult to define the optimal scale segmentation. Bearing this in mind, many researchers have exploited multiple scales of data [7, 8, 10–13].

Allied to the problem of finding the best scale of segmentation, there is the problem of selection/com-
bination of extracted features. In addition to this, several studies show that the combination of features can improve classification results [4, 14].

Our aim is to propose a kind of boost-classifier adapted to multi-scale segmentation, taking advantage of various region features computed at various levels of segmentation. To building multi-scale classifiers, we propose two approaches for multi-scale analysis of images: the Multi-Scale Classifier (MSC) and the Hierarchical Multi-Scale Classifier (HMSC). The MSC is based on the Adaboost algorithm [15], which builds a strong classifier from a set of weak ones. The HMSC is also based on boosting of weak classifiers, but it relies on a sequential strategy of training, according to the segmentation hierarchy of scales (from coarser to finer). In this work, we proposed two configurations of weak learners: Support Vector Machine (SVM) and Radial Basis Function (RBF). The RBF approach is based on the distances provided by the used descriptors.

We segment the image using several scales of interest regions, from the pixel level to the image level, using Guigues algorithm [16]. Instead of choosing any particular scale, which is usually not enough to represent all regions of interest, we use the segmentation results from several scales and let the choice of the most relevant regions and of the most discriminative features between relevant and non-relevant samples be done by the learning machine. Our method differs from the others in four main aspects. First, it does not rely on any particular scale (empirical parameter) and, thus, it can capture the most relevant regions in different parts and scales of the image and the most discriminative features at various scales, from fine to coarse. Moreover, it exploits the results of auxiliary scales to improve classification, even when there is a single optimum scale. Furthermore, it combines classification results from different scales rather than fusing features. Last, it assigns the same set of classes for all scales, producing a single final result, instead of producing a distinct classification result per scale.

The use of the proposed method depends only on the used descriptors. Thus, the proposed method can

be used to classify any image/region, given that the descriptors are suitable for the target image/region. It is important to clarify that the method will better work in images with a reasonable level of noise and resolution, in which representative features can be extracted from both small and large regions. We validate the proposed approach on a dataset composed by SPOT images obtained from a traditional place of coffee cultivation in Brazil.

This paper is outlined as follows. Section II covers related work. Section III presents some concepts related to representation and description necessary to understand our proposed approach. Section IV introduces our method for multi-scale training and classification. Experimental results are presented in Section V. In Section VI, we present our conclusion and discuss future work.

II. RELATED WORK

A study of published works between 1989 and 2003 [1] examined the results and implications of RSI classification research. According to this study, despite the high number of approaches in that period, there was no significative improvement in terms of classification results. Most of the proposed methods were pixel-based. These methods try to estimate the probability of each pixel to belong to the possible classes by employing statistic measures based only on spectral properties. The *Maximum Likelihood Classification* (MaxVer) [3] remains one of the most popular methods for RSI classification. MaxVer computes the probability of each pixel to belong to each of the defined classes and uses that information to assign the class with the highest probability.

The improvements in sensor technologies have increased the accessibility to high-resolution images. As a result, new approaches have been developed to make a better use of the available data. This led to researches that take into account the neighborhood of the pixels in the analysis and, thus, texture features in the classification of RSIs. In [17], a general overview of RSI classification until 2005 is presented. That work discusses the challenges and describes all the steps that compose the classification process. Various classification methods are presented and grouped according to its taxonomy.

More recently, a new trend can be observed. Many studies [18–21] consider information encoded in regions (group of pixels) for RSI classification tasks. Gigandet et al. [18] proposed a classification algorithm for high resolution RSIs, combining non-supervised and supervised classification strategies. In this method, regions were classified by using Mahalanobis distance and Support Vector Machines (SVM). Lee et al. [19] created a region-based classification method for high resolution images that exploited two approaches: MaxVer with region means and MaxVer with Gaussian Probability Density Function.

Both works presented better results than pixel-based classifiers. Yu et al. [20] also proposed a method to classify RSIs based on regions. The image segmentation and classification were performed by using fractal networks and non-parametric K-Nearest Neighbor (KNN), respectively. Another recent work in this research area was developed by Katartzis et al. [21] who proposed a region-based RSI classification method that uses Hierarchical Markov Models.

The growth of classification approaches based on regions has been analyzed in [22]. According to Blaschke et al., the goal of *Object-Based Image Analysis* (OBIA) is to outline objects that are useful in the images, combining at the same time image processing and features of Geographic Information Systems (GIS) with the aim of using spectral and contextual information seamlessly. The article proves that the growth in the number of new approaches published accompanies the increase of the accessibility to high-resolution images and, hence, the development of alternative techniques to classification based on pixels. As pointed out by the authors, the growth in research involving OBIA was motivated in part by the use of commercial software eCognition [5]. This software has allowed research involving classification of regions, enabling the inclusion of data from different scales by using an approach supported on KNN classifier.

These new trends have encouraged research studies which compare techniques based on pixels and/or on regions [2, 21, 23, 24] and propose new segmentation techniques that support the classification of regions in RSIs [25–28].

Likewise, new researches that take advantage of the use of multiple scales of data have been carried out [7, 8, 10–13]. Both Ouma et al. [8] and Wang et al. [10] proposed approaches that use multiscale data for land cover change detection. In [8], Ouma et al. presented a technique for multi-scale segmentation with an unsupervised neural network for vegetation analysis. Wang et al. [10], on the other hand, proposed an approach for change detection in urban areas. The method relies on the fusion of features from different scales based on a combination of means for each pixel in the used scales. The result is a new image which corresponds to the combination of the scales.

Like Wang et al. [10], Kim et al. [11] used the eCognition software to create the multi-scale segmentation. The objective, however, was to perform multi-class classification. In the segmentation process, the size of the regions is controlled by a scale parameter. For each scale, a different set of classes is defined according to a hierarchy between the classes of each scale. Thus, for each level, a different classification is performed. It includes structural knowledge and high semantic contents. The result of the coarsest scales

is used for the classification of the most specific classes, restricting the regions that belong to the same subtree in the hierarchy.

Valero et al. [13] proposed a region-based hierarchical representation for hyperspectral images based on Binary Partition Tree (BPT). They show that the proposed Pruning BPT method can be suitable for classification. Furthermore, they mention that by using different prunings based on the same idea it can be also used for filtering and segmentation purposes.

Tzotsos et al. [7, 12] used multiple scales for RSIs classification. In [12], they proposed a classification based on SVM with Gaussian Kernel that uses multi-scale segmentation. One single segmentation result is used for the extraction of objects by combining segments of various sizes. The size of the selected objects is controlled by a scale parameter as well. In [7], the authors proposed a method for the fusion of scales by nonlinear scale-space filtering. This technique avoids the use of parameters to control the creation of objects selected for classification.

The method we propose differs from the other studies in several aspects. First of all, if we consider that there is an ideal scale to represent the objects, we consider the cases in which it is not known and, hence, it can not be defined by empirical parameters. Moreover, even if the optimal scale is known, we can not assure that the use of auxiliary scales does not improve the classification accuracy. Another aspect is that our approach does not propose the fusion of features, but the combination of the classification results at different scales. Finally, our proposal uses different scales to classify the image by assigning the same set of classes at all scales, producing a single final result, i.e, a single model for all classification problems.

Our work differs from others that use a set of classes for each scale and consider semantic information to produce a classification result for each scale.

III. IMAGE REPRESENTATION AND DESCRIPTION

In this section, we describe some concepts that are used in the remainder of this work.

A. Hierarchical Segmentation

As mentioned in Section II, new methods of multi-scale segmentation have been recently proposed for remote sensing purposes [25–30].

One of the most powerful segmentation method is the scale-set representation introduced by Guigues et al. [16], which builds a hierarchy of regions or a single suite of partitions. As the optimal partitioning

of an image depends on the application, this method proposes to keep all partitions obtained at all scales, from the pixel level until the complete image.

Guigues algorithm is, to the best of our knowledge, the segmentation method, which fits at best the regions of the scene, and is especially efficient for aerial and remote sensing images. Among other applications, this method has been successfully used in tasks of multi-scale segmentation of remote sensing images by Trias-Sanz et al. [9]. They justify the use of Guigues' algorithm by the fact that it makes both the segmentation criterion and the scale parameter explicit. We concisely introduce the algorithm below.

Let image I be defined over a domain \mathcal{D} , a partition P is a division of \mathcal{D} into separate regions p_i . A partition P_2 is finer than a partition P_1 if each region R of P_2 is included in one and only one region of P_1 . The scale-set representation consists in defining a set of nested partitions P_λ of \mathcal{D} , indexed by a scale parameter λ , such that if $\lambda_1 \leq \lambda_2$ then P_2 is finer than P_1 . The transition between P_i and P_{i+1} is obtained by merging some adjacent regions of P_i into larger regions by optimizing a criterion. The criterion we use corresponds to Mumford-Shah energy [31], which approximates the color image by a piecewise constant model, while minimizing the edge lengths:

$$E(P) = \sum_{R_i \in P} E_D(R_i) + \lambda E_C(R_i) \quad (1)$$

where E_D is the distance with the piecewise constant model and E_C is the length of the contour.

The compromise between both constraints is defined by the parameter λ . For small values of λ , the image is over-segmented, the approximation of each region by a constant is perfect, but the total length of all edges is very large. On the contrary, when λ is large, the partition contains few regions (until only one), then the approximation of each region by a constant is poor, but the total length of all edges is very small. The set of partitions has a structure of a hierarchy H of regions: two elements of H that are not disjoint are nested. A partition P_λ is composed by the set of regions obtained from a cut in the hierarchy H at scale λ (see Figure 1). Guigues et al. showed that this algorithm can be performed with the worst case complexity in $O(N^2 \log N)$, where N is the size of the initial over-segmentation.

Figure 1 shows the segmentation structure obtained by the Guigues' algorithm. The hierarchy of regions is drawn as a tree and the vertical axis is the a scale axis (in logarithmic representation). A cut in scale λ retrieves a partition P_λ .

To automatically select partitions at different scales, Guigues et. al. proposed the use of a dichotomous cutoff-based strategy, which consists of successively splitting the hierarchy of regions in to two. Each

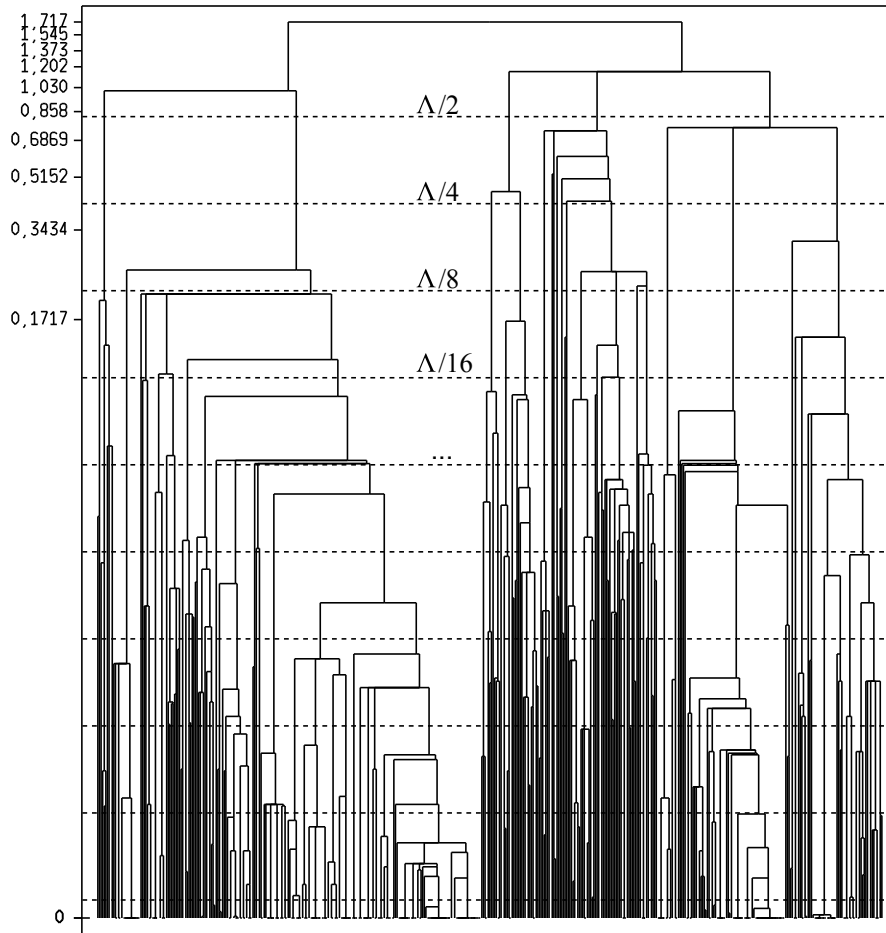


Fig. 1. A scale-sets image representation. Horizontal axis: the regions. Vertical axis: the scales (logarithmic representation).

division is a dichotomous cut and creates a partition at the defined scale.

Let Λ be the maximum scale in hierarchy H , i.e., the one in which the image I is represented by a single region, the cut-scale λ^c is defined by $\lambda^c = \Lambda/2^n$, where n is the order of each division in the hierarchy. Figure 2 presents some cuts extracted from the hierarchy illustrated in Figure 1.

The highest scale of the hierarchy shown in Figure 1 is $\Lambda = 1.716$. Thus, the first cut is defined at the scale $\lambda^c = 0.858$, the second one at the scale $\lambda^c = 0.429$, and so on.

B. Image Descriptors

This paper uses the descriptor definition proposed in [32]. According to that work, a descriptor can be characterized by two functions: *feature vector extraction* and *similarity computation*. The feature vectors encode image properties, like color, texture, and shape. Therefore, the similarity between two images is computed as a function of their feature vector distance. Note that different types of feature vectors may require different similarity functions.

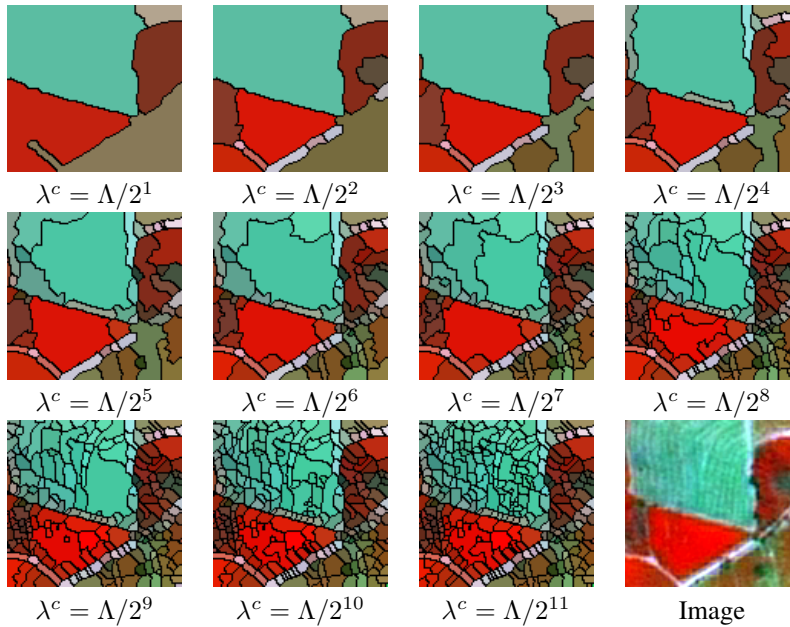


Fig. 2. Some cuts of the scale-sets and the original image.

The multi-scale classification we propose is general and does not depend on the type of features used. In this article, we use seven descriptors from the literature: three texture descriptors and four descriptors that encode spectral features (color). In our implementation, all these descriptors use the L_1 function to calculate distances between two feature vectors. We briefly present the function extraction of each descriptor below.

1) *Global Color Histogram (GCH)* [33]: It is one of the most commonly used descriptors, it uses an extraction algorithm which quantizes the color space in a uniform way and it scans the image computing the number of pixels belonging to each bin. The size of the feature vector depends on the quantization used. In the present work, the color space was split into 64 bins, thus, the feature vector has 64 values.

2) *Color Coherence Vector (CCV)* [34]: This descriptor, like GCH, is recurrent in the literature. It uses an extraction algorithm that classifies the image pixels as “coherent” or “incoherent” pixels. This classification takes into consideration whether the pixel belongs or not to a region with similar colors, that is, coherent regions. Two color histograms are computed after quantization: one for coherent pixels and another for incoherent ones. Both histograms are merged to compose the feature vector. In our experiments, the color space was quantized into 64 bins.

3) *Color Autocorrelogram (ACC)* [35]: The role of this descriptor is to map the spatial information of colors by pixel correlations at different distances. It computes the probability of finding in the image two pixels with color C at distance d from each other. For each distance d , probability m are computed,

where m represents the number of colors in the quantized space. The implemented version quantized the color space into 64 bins and considered 4 distance values (1, 3, 5, and 7).

4) *Border/Interior Pixel Classification (BIC)* [36]: This descriptor has been successful in many applications. It has presented good results in tasks of image retrieval and classification of RSIs (e.g., [37], [4], and [14]). The first step of the feature vector extraction process relies on the classification of image pixels into *border* or *interior* ones. When a pixel has the same spectral value in the quantized space as its four neighbors (the ones which are above, below, on the right, and on the left), it is classified as *interior*. Otherwise, the pixel is classified as *border*. Two histograms are computed after the classification: one for the interior pixels and another for the border ones. Both histograms are merged to compose the feature vector. The implemented version quantized the color space in to 64 bins. Although the original version uses $dlog$ function distance, the used version was adapted to use $L1$ distance.

5) *Invariant Steerable Pyramid Decomposition (SID)* [38]: In this descriptor, a set of filters sensitive to different scales and orientations processes the image. The image is first decomposed into two sub-bands using a high-pass and low-pass filter. After that, the low-pass sub-band is decomposed recursively into K sub-bands by band-pass filters and into one sub-band by a low-pass filter. Various directional information about each scale is captured by each recursive step. The mean and standard deviation of each sub-band are used as feature values. To obtain the invariance to scale and orientation, circular shifts in the feature vector are applied. The implemented version uses 2 scales and 4 orientations, which gives a feature vector with 16 values.

6) *Unser* [39]: This descriptor is based on co-occurrence matrices, still one of the most widely used descriptors to encode texture in remote sensing applications. Its extraction algorithm computes a histogram of sums H_{sum} and a histogram of differences H_{dif} . The histogram of sums is incremented considering the sum, while the histogram of differences is incremented by taking into account the difference between the values of two neighbor pixels. As well as gray level co-occurrence matrices, measures such as energy, contrast, and entropy can be extracted from the histograms. In our experiments, 256 gray levels and 4 angles were used (0° , 45° , 90° , and 135°). The feature vector is composed of 32 values and eight different measures were extracted from histograms.

7) *Quantized Compound Change Histogram (QCCH)* [40]: It uses the relation between pixels and their neighbors to encode texture information. This descriptor generates a representation invariant to rotation and translation. Its extraction algorithm scans the image with a square window. For each position in the

image, the average gray value of the window is computed. Four variation rates are then computed by taking into consideration the average gray values in four directions: horizontal, vertical, diagonal, and anti-diagonal directions. The average of these four variations is calculated for each window position, they are grouped into 40 bins and a histogram of these values is computed.

IV. MULTI-SCALE TRAINING AND CLASSIFICATION

In the following sections, we describe the basic ideas of our approach, as well as the major processing steps for multi-scale classification. In Section IV-A, we introduce the concepts and the general functioning of the proposed approach. In Section IV-B and IV-C, the two approaches that we propose for training classifiers using multi-scales are presented. Finally, in Section IV-D we describe the weak classifiers used in the proposed method.

A. Classification Principles

The aim of RSI classification is to build a classification function $F(p)$ that returns a classification score (+1 for relevant, and -1 otherwise) for each pixel p of a RSI. Let us note that, even if the classification returns a result at a pixel level, the decision may be based on regions of different scales containing the pixel.

In order to create such classification function $F(p)$, we first extract different features at different scales using multi-scale segmentation. This first step, detailed in the previous section, is fully automatic. After this step, we use boosting to build a linear combination of weak classifiers, each of them related to a specific scale and feature type. The training is performed using a training RSI image I where each pixel is labeled. It starts at pixel level, or better after a watershed process in order to obtain regions more reliable to compute the energy (Equation 1). Figure 3 illustrates the steps of the multi-scale training approach.

The base of hierarchy H is composed of the set of pixels from training image I , and it will be denoted P_0 . We will use several partitions P_λ of hierarchy H at various scales λ . At each scale λ , a set of features is computed for each region of P_λ . These features can be different according to the level, and, thus, to the size of the regions. For example, a texture feature is not appropriate for too small regions and a histogram (such as color histogram) is less accurate for large regions.

B. Multi-Scale Training

The *multi-scale classifier* (MSC) aims at assigning a label (+1 for relevant class, and -1 otherwise) to each pixel p of P_0 taking advantage of various features computed on regions of various levels of

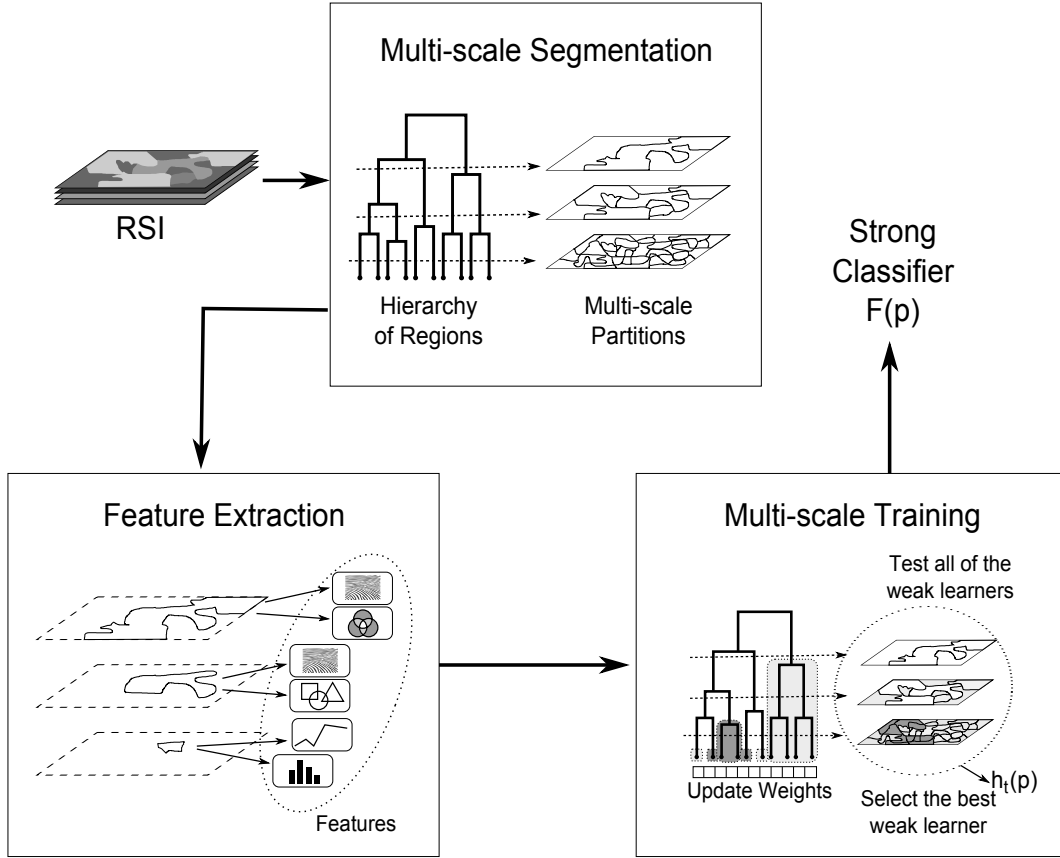


Fig. 3. Steps of the multi-scale training approach. At the beginning, several partitions P_λ of hierarchy H at various scales λ are selected. Then, at each scale λ , a set of features is computed for each region $R \in P_\lambda$. Finally, a classifier $F(p)$ is built by using the Multi-Scale Training (Section IV-B) or the Hierarchical Multi-Scale Training (Section IV-C).

the hierarchy. To build multi-scale classifiers, we propose a learning strategy based on boosting of weak learners. This strategy is based on AdaBoost algorithm proposed by Schapire [15], which builds a linear combination $MSC(p)$ of T weak classifiers $h_t(p)$:

$$MSC(p) = \text{sign} \left(\sum_{t=1}^T \alpha_t h_t(p) \right) \quad (2)$$

The proposed algorithm repeatedly calls *weak learners* in a series of rounds¹ $t = 1, \dots, T$. Each weak learner creates a weak classifier that decreases the expected classification error of the combination. The algorithm then selects the weak classifier that most decreases the error.

The strategy consists in keeping a set of weights over the training set. These weights can be interpreted as a measure of the difficulty level to classify each training sample. At the beginning, all the pixels have

¹Despite the term “iterations” be more common, we use the term “rounds” that is typically applied to refer to the main loop present in boosting-based methods.

the same weight, but in each round, the weights of the misclassified pixels are increased. Thus, in the next rounds the weak learners are forced to focus on harder samples. We will note $W_t(p)$ the weight of pixel p in round t , and $D_{t,\lambda}(R)$ the misclassification rate of region R in round t at scale λ given by the mean of the weights of its pixels:

$$D_{t,\lambda}(R) = \left(\frac{1}{|R|} \sum_{p \in R} W_t(p) \right) \quad (3)$$

Algorithm 1 presents the proposed Multi-Scale Training process. Let $Y_\lambda(R)$, the set of labels of regions R at scale λ , be the input dataset. We divide this set into training ($Y_\lambda^t(R)$) and validation sets ($Y_\lambda^v(R)$). In a serie of rounds $t = 1, \dots, T$, for all scales λ , the weight of each region $D_{t,\lambda}(R)$ is computed (line 3). This piece of information is used to select the regions to be used for training the weak learners, building a subset of labeled regions $\hat{Y}_{t,\lambda}$ (line 6). The subset $\hat{Y}_{t,\lambda}$ is used to train the weak learners with each features \mathcal{F} at scale λ (line 9). Each weak learner produces a weak classifier $h_{t,(\mathcal{F},\lambda)}$ (line 10). The algorithm then selects the weak classifier h_t that most decreases the error Err_{h_t} on the validation set Y_λ^v (line 12). The level of error of h_t is used to compute the coefficient α_t , which indicates the degree of importance of h_t in the final classifier (line 13). The selected weak classifier h_t and the coefficient α_t are used to update weights $W_{(t+1)}(p)$ which can be used in the next round (line 14).

The classification error of classifier h is:

$$Err(h, W) = \sum_{p|h(p)Y_0^v(p) < 0} W(p) \quad (4)$$

where Y_0^v is the validation set (the label of each pixel in the image).

The training is performed on the training set labels Y_λ^t corresponding to the same scale λ . The weak learners (linear SVM, for example) use the subset $\hat{Y}_{t,\lambda}$ for training and produce a weak classifier $h_{t,(\mathcal{F},\lambda)}$. The training/validation set labels Y_0 are the labels of pixels of image I , and training/validation sets labels Y_λ with $\lambda > 0$ are defined according to the proportions of pixels belonging to one of the two classes (for example, at least 80% of one region).

The idea of building the subset \hat{Y} is to force the classifiers to train with the most difficult samples. The weak learner should allow the most difficult samples to be differentiated from the other ones according to their weights. Thus, the strategy of creating \hat{Y} is directly dependent on the configuration of the weak classifier and may contain all regions, since the classifier considers the weights of the samples.

Algorithm 1 Multi-Scale Training

Given:

$Y_\lambda(R)$ = labels of regions R at scale λ
 $(Y_\lambda = Y_\lambda^t \cup Y_\lambda^v, \text{ where } Y_\lambda^t \text{ is the training set and } Y_\lambda^v \text{ is the validation set})$

Initialize:

For all pixels p , $W_1(p) \leftarrow \frac{1}{|Y_0|}$, where $|Y_0|$ is the number of pixels in the image level

```

1 For  $t \leftarrow 1$  to  $T$  do
2   For all scales  $\lambda$  do
3     For all  $R \in P_\lambda$  do
4       Compute  $D_{t,\lambda}(R)$ 
5     End for
6     Build  $\hat{Y}_{t,\lambda} \subset Y_\lambda^t$  (a training subset based on  $D_{t,\lambda}(R)$ )
7   End for
8   For each pair feature/scale  $(\mathcal{F}, \lambda)$  do
9     Train weak learners using features  $(\mathcal{F}, \lambda)$  and training set  $\hat{Y}_{t,\lambda}$ .
10    Evaluate resulting classifier  $h_{t,(\mathcal{F},\lambda)}$  on the validation set  $Y_\lambda^v$ : compute  $Err(h_{t,(\mathcal{F},\lambda)}, W_{t,\lambda})$ 
    (Equation 4)
11  End for
12  Select weak classifier  $h_t$ , the one with minimum error  $Err^* = \operatorname{argmin}_{h_{t,(\mathcal{F},\lambda)}} Err(h_{t,(\mathcal{F},\lambda)}, W_{t,\lambda})$ 
13  Compute  $\alpha_t \leftarrow \frac{1}{2} \ln \left( \frac{1+r_t}{1-r_t} \right)$  with  $r_t \leftarrow \sum_p cY_0(p)h_t(p)$ 
14  Update  $W_{t+1}(p) \leftarrow \frac{W_t(p) \exp(-\alpha_t Y_0(p)h_t(p))}{\sum_p W_t(p) \exp(-\alpha_t Y_0(p)h_t(p))}$ 
15 End for

```

Output: Multi-Scale Classifier $MSC(p)$ (Equation 2)**C. Hierarchical Training**

The Multi-Scale Training presented in Section IV-B creates a classifier based on linear combination of weak classifiers. In this case, both the selection of scales and features, and the weights of each weak classifier are obtained by a strategy based on AdaBoost. Although this approach provides the selection of the most appropriate scales to the training set, it does not ensure the representation of all scales in the final result. In addition, the cost of training with each scale is proportional to the number of regions it contains. However, the coarse scales are not always selected, which means that training time can be reduced if we avoid this analysis.

In order to overcome these problems, we propose a *hierarchical multi-scale classification* scheme. The proposed strategy is presented in Figure 4. It consists of individually selecting the weak classifiers for each scale, starting from the coarsest one to the finer. Thereby, each scale provides a different stage of

training. At the end of each stage, only the most difficult samples are selected, limiting the training set used in the next stage. In each stage, the process is similar to the one described in Algorithm 1. However, the weak learners are trained with only the features related to the current scale. For each scale, the weak learner produces a set H_λ of weak classifiers.

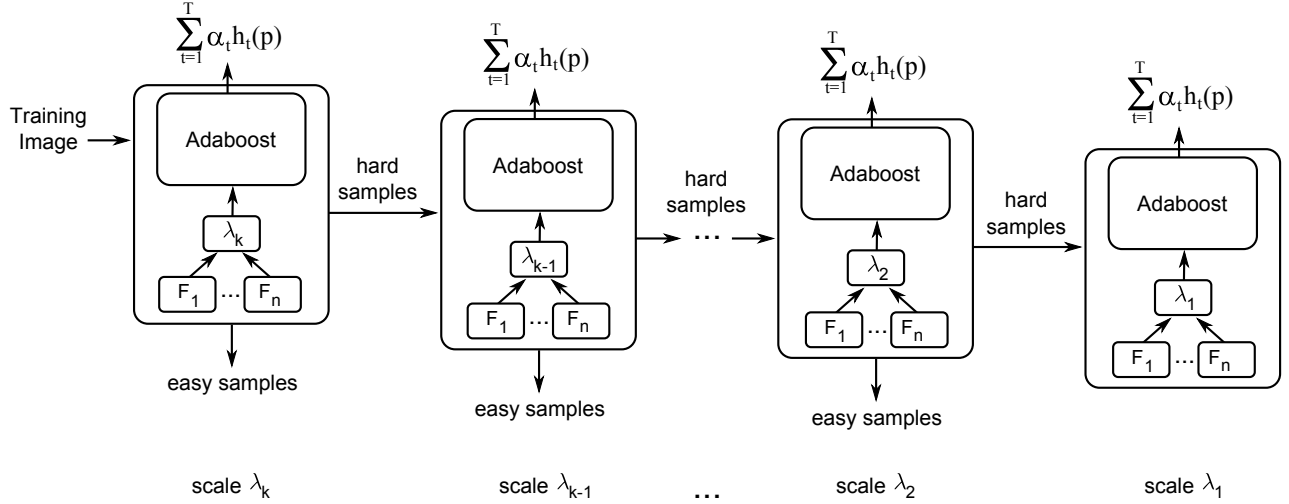


Fig. 4. The Hierarchical Multi-Scale training strategy.

The *hierarchical multi-scale classifier (HMSC)* is a combination of the set of weak classifiers $\mathcal{S}_\lambda(p)$ selected for each scale λ :

$$HMSC(p) = \text{sign}\left(\sum_{\lambda_i} \mathcal{S}_{\lambda_i}(p)\right) = \text{sign}\left(\sum_{\lambda_i} \sum_{t=1}^T \alpha_{t,\lambda_i} h_{t,\lambda_i}(p)\right) \quad (5)$$

where T is the number of rounds for each boosting step.

At the end of each stage, we withdraw the easiest samples. Let W_i be the weights of the pixels after training with scale λ_i , we denote $D_i(R_{i+1})$ the weight of the region $R_{i+1} \in P_{\lambda_{i+1}}$, which is given by:

$$D_i(R_{i+1}) = \left(\frac{1}{|R|} \sum_{p \in R} W_i(p)\right) \quad (6)$$

The set of regions \check{Y}_{i+1} to be used in the training stage with scale λ_{i+1} is composed by the regions $R_{i+1} \in P_{\lambda_{i+1}}$ with mean $D_i(R_{i+1}) > \frac{1}{2|Y_0|}$. This means that the regions that ended a training stage with distribution equal to half the initialization value $\frac{1}{|Y_0|}$, are discarded from one stage to another.

D. Weak Classifiers

In this paper, we adopted two configurations of weak learners: Support Vector Machines (SVM) and Radial Basis Function (RBF).

1) *SVM-based weak learner*: It is an SVM trainer based on a specific feature type \mathcal{F} and a specific scale λ . Given the training subset labels \hat{Y}_λ , the strategy is to find the best linear hyperplane of separation between RSI regions according to their classes (coffee and non-coffee regions), trying to maximize the data separation margin. These samples are called support vectors and are found during the training. Once the support vectors and the decision coefficients $(\alpha_i, i = 1, \dots, N)$ are found, the SVM weak classifier can be defined as:

$$SVM_{(\mathcal{F}, \lambda)}(R) = \text{sign}\left(\sum_i^N y_i \alpha_i (f_R \cdot f_i) + b\right) \quad (7)$$

where b is a parameter found during the training. The support vectors are the f_i such that $\alpha_i > 0$, y_i is the support vector class and f_R is the feature vector of the region.

The training subset $\hat{Y}_{t,\lambda}$ is composed by n labels from Y_λ with values of $D_{t,\lambda}(R)$ larger or equal to $\frac{1}{|Y_0|}$. This strategy means that only regions considered as the most difficult ones are used for the training. For the first round of boosting, the regions to compose the subset $\hat{Y}_{0,\lambda}$ are randomly selected.

The weakness of the linear SVM classifier is due to our strategy of creating subsets instead of providing all regions of a partition for training. It decreases the power of the produced classifier. Moreover, in our experiments the dimension of the feature space is smaller than the number of samples, which theoretically guarantees the weakness of linear classifiers.

2) *RBF-based weak learner*: The RBF approach is based on the distances provided by the used descriptors. It consists of selecting a target region that best separates the other regions between both classes based on a specific image descriptor \hat{D} and a specific scale λ . The distances are normalized with the sigmoid function.

The RBF-based weak learner tests all training regions (i.e, $\hat{Y}_\lambda = Y_\lambda$) as targets in the classification task. The exception are the regions that have already been used as targets.

Let R_t be a target region and y its class (1 for relevant and -1 for irrelevant). The class of region R , given by the weak classifier (R_t, \hat{D}, λ) , is defined by:

$$RBF_{(R_t, \hat{D}, \lambda)}(R) = \begin{cases} y, & \text{if } d(R_t, R) \leq l \\ -y, & \text{otherwise} \end{cases} \quad (8)$$

where $d(R_t, R)$ is the distance between the target region R_t and region R using descriptor \hat{D} and l is a threshold value.

V. EXPERIMENTS

In this section, we present the experiments that we performed to validate our method. We have carried out experiments in order to address the following research questions:

- Is the set of used descriptors effective for object-based RSI classification task (Section V-B1)?
- Is the multi-scale classification results effective in RSI tasks (Section V-B2)?
- Are the proposed weak learners effective in the RSI classification problem (Section V-B3)?
- Can the hierarchical strategy for multi-scale improve the classification results (Section V-B4)?
- Are the proposed methods effective in the RSI classification problem when compared to a baseline (Section V-B5)?

In Section V-A, we describe the basic configuration of our experiments. In Section V-B we present the experimental results.

A. Setup

1) *Dataset*: The dataset used in our experiments is a composition of scenes taken by the SPOT sensor in 2005 over Monte Santo de Minas county, in the State of Minas Gerais, Brazil. This area is a traditional place of coffee cultivation, characterized by its mountainous terrain. In addition to common issues in the area of pattern recognition in remote sensing images, these factors add further problems that must be taken into account. In mountainous areas, the spectral patterns tend to be affected by the topographical differences and interference generated by the shadows. This dataset provides an ideal environment for multi-scale analysis, since the variations in topography require the cultivation of coffee in different crop sizes. Another problem is that coffee is not an annual crop. This means that, in the same area, there may be plantations of different ages, as illustrated in Figure 5. In terms of classification, we have several completely different patterns representing the same class while some of these patterns are much closer to other classes.

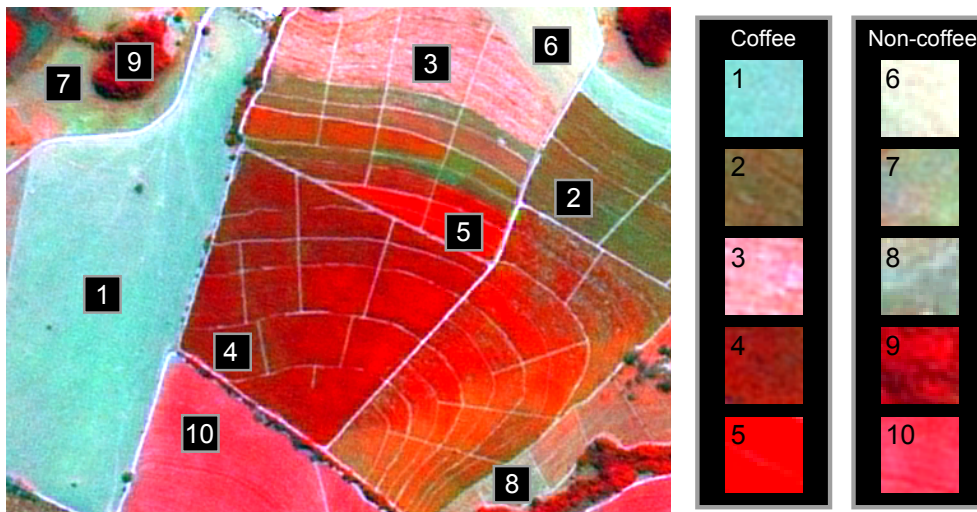


Fig. 5. Example of coffee and non-coffee samples in the used RSI. Note the difference among the samples of coffee and their similarities with non-coffee samples [4].

We have used a complete mapping of the coffee areas in the dataset for training and assessing the quality of experimental results. The identification of coffee crops was done manually in the whole county by agricultural researchers. They used the original image as reference and visited the place to compose the final result.

The dimensions of the image used are 3000×3000 pixels with spatial resolution equals to 2.5 meters. To facilitate the experimental protocol, we divided the dataset into a grid of 3×3 , generating 9 subimages with dimensions equal to 1000×1000 pixels. In the experiments, we used 9 different sets of 1 million pixels each, to be used for training and testing. The results of the experiments described in the following sections are obtained from all combinations of the 9 subimages used (3 for testing, 3 for validation and, 3 for testing).

2) *Feature Extraction*: Unlike conventional images, RSI bands do not usually correspond exactly to the human visible spectrum. To apply conventional image descriptors (which generally use three color channels), it is necessary to select the most informative bands. Therefore, we used only the bands corresponding to “red”, “infrared”, and “green” that are fundamental to describe vegetation targets. These spectral bands are the basis for most of the vegetation indexes [41].

We extracted seven different features from the band composition IR-NIR-R (342) by using 4 color descriptors (ACC [35], BIC [36], CCV [34], and GCH [33]) and 3 texture descriptors (Unser [39], SID [38], and QCCH [40]). These descriptors were presented in Section III-B.

We considered five different scales to extract features from λ_1 (the finest one) to λ_5 (the coarsest one).

We selected the scales according to the principle of dichotomic cuts (see Section III-A). Figure 6 illustrates the multi-scale segmentation for one of the subimages. At λ_5 scale, subimages contain between 200 and 400 regions while, at scale λ_1 , they contain between 9,000 and 12,000 regions.

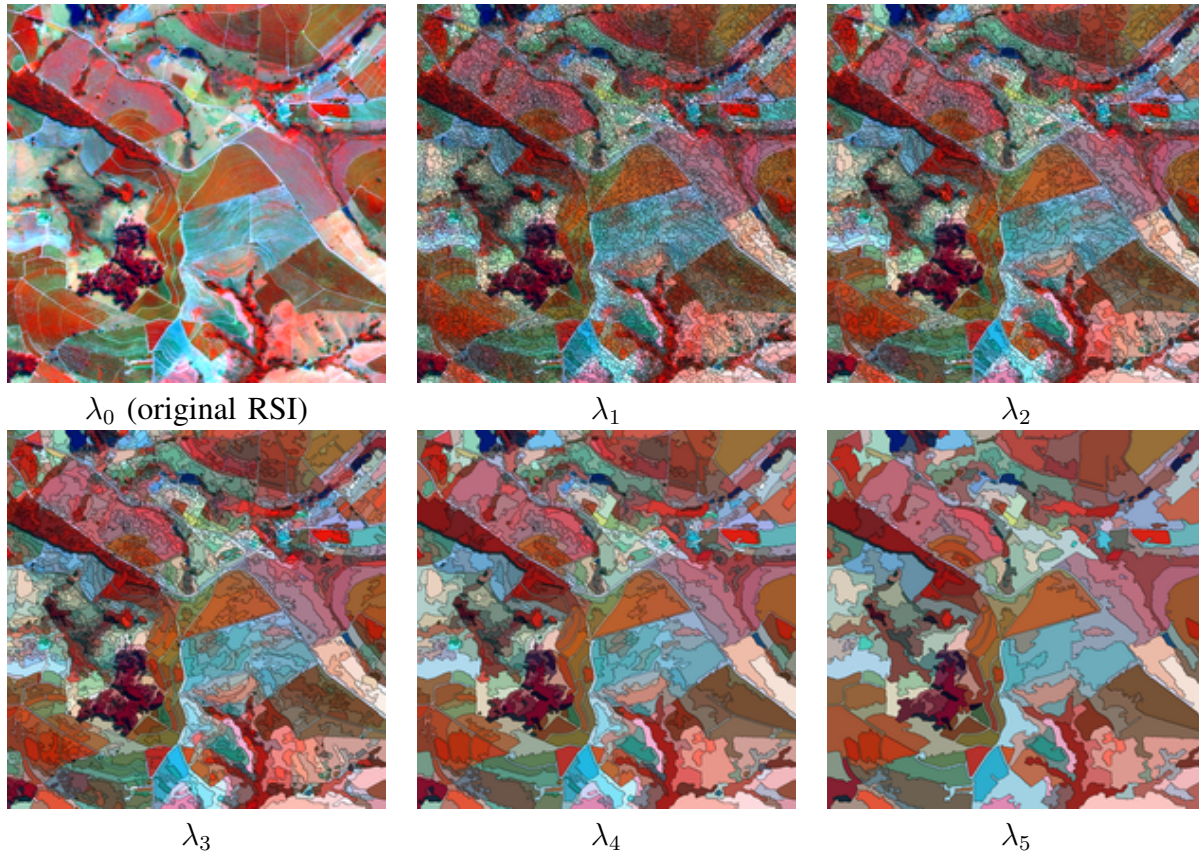


Fig. 6. One of the tested subimages and the results of segmentation in each of the selected scales.

3) *Assessment of results:* To analyze the results, we computed the overall accuracy and Kappa index for the classified images. In our experiments, the overall accuracy is defined as the sum of true positive and true negative samples divided by the total number of samples. Kappa is an effective index to compare classified images, commonly used in RSI classification [42]. Experiments in different areas show that Kappa could have various interpretations and these guidelines could be different depending on the application. However, Landis and Koch [43] characterize Kappa values over 0.80 as “almost perfect agreement”, 0.60 to 0.79 as “substantial agreement”, 0.40 to 0.59 as “moderate agreement”, and below 0.40 as “poor agreement”. Negative Kappa means that there is no agreement between classified data and verification data.

B. Results

1) *Descriptors Comparison:* The result of classification is directly related to the quality of the features extracted from the image. In this sense, the objective of this experiment is to compare descriptors in

region-based classification tasks. To do so, we used MSC approach with linear Support-Vector Machines in an intermediate scale of segmentation (λ_2). Table I presents the overall accuracy and Kappa results for each descriptor.

TABLE I
CLASSIFICATION RESULTS FOR THE USED DESCRIPTORS AT λ_2 SCALE.

	Descriptor	Overall Acc. (%)	Kappa (κ)
Color	<i>ACC</i>	78.60 \pm 1.88	0.7238 \pm 0.029
	<i>BIC</i>	79.92 \pm2.04	0.7447 \pm0.033
	<i>CCV</i>	77.38 \pm 2.72	0.7011 \pm 0.046
	<i>GCH</i>	77.64 \pm 2.71	0.7056 \pm 0.045
Texture	<i>QCCH</i>	69.94 \pm4.21	0.5503 \pm0.086
	<i>UNSER</i>	68.72 \pm 3.67	0.5255 \pm 0.078
	<i>SID</i>	68.63 \pm 3.76	0.5215 \pm 0.078

BIC obtained the best results among all the descriptors. BIC takes into account the spatial distribution of colors, which in a way encodes both color and texture. QCCH achieved a small highlight among the texture ones. The results present a small difference between GCH and CCV. In fact, we note that their classification results are correlated.

The great difference between the color and texture descriptors classification rates was expected. This fact is consistent with those results obtained in [37] and [9]. Anyway, we believe that the combination of texture and color descriptors can improve the results.

2) *Multi-Scale \times Individual Scale*: In this section, we compare the classification results obtained by using individual scales against the combination of scales by using the MSC approach presented in Section IV-B with 10 rounds. In this experiments, we used all descriptors referenced in Section V-A2. Table II presents the classification results. Table III presents the time spent for training and testing. The experiments were carried out on a 2.40GHz Quad Core Xeon with 32 GB RAM.

According to the results, one can observe that the combination of scales ($\bigcup_{i=1}^5 \lambda_i$) is slightly better than the best individual scale (λ_4). We can conclude that the proposed method MSC not only found the best scale but also could improve the result by adding other less significant scales.

Concerning time, it takes the combination longer to train when compared to scale λ_2 , but not longer than scale λ_1 alone. The same effect can be observed for the classification time.

3) *Weak Classifiers Comparison (Linear SVM \times RBF)*: In this section we compare the weak learners presented in Section IV-D. We performed experiments with 10 rounds for SVM-based and 50 rounds

TABLE II
CLASSIFICATION RESULTS USING INDIVIDUAL SCALES AND THE COMBINATION.

Scale	Overall Acc. (%)	Kappa (κ)
λ_1	79.07 \pm 1.60	0.7298 \pm 0.028
λ_2	79.90 \pm 2.04	0.7441 \pm 0.033
λ_3	80.43 \pm 2.11	0.7519 \pm 0.033
λ_4	81.04 \pm 1.70	0.7625 \pm 0.026
λ_5	80.31 \pm 1.23	0.7494 \pm 0.020
$\bigcup_{i=1}^5 \lambda_i$	82.28 \pm1.60	0.7800 \pm0.025

TABLE III
TIME SPENT ON CLASSIFICATION USING INDIVIDUAL SCALES AND THE COMBINATION.

Scale	Training Time (s)	Classification Time (s)
λ_1	44454.54	103.98
λ_2	9163.32	36.99
λ_3	1272.69	14.59
λ_4	349.27	8.56
λ_5	84.85	6.25
$\bigcup_{i=1}^5 \lambda_i$	24939.34	38.52

for RBF-based weak learners. This is the amount of rounds which normally stabilizes the results using each of the weak learners. In other words, after 10 rounds for SVM and 50 rounds for RBF, the selected weak learner typically gets very small weights and does not interfere in the final classification. Table IV presents the classification results. Table V presents training/classification times.

TABLE IV
CLASSIFICATION RESULTS COMPARING THE MSC APPROACH USING RBF AND SVM-BASED WEAK LEARNERS.

Weak Learners	Overall Acc. (%)	Kappa (κ)
<i>RBF</i>	77.78 \pm 3.68	0.6957 \pm 0.082
<i>Linear SVM</i>	82.28 \pm1.60	0.7800 \pm0.025

TABLE V
TIME SPENT ON CLASSIFICATION USING THE MSC APPROACH WITH RBF AND SVM-BASED WEAK LEARNERS.

Weak Learners	Training Time (s)	Classification Time (s)
<i>RBF</i>	31030.987	327.01
<i>Linear SVM</i>	24939.34	38.52

We can observe that MSC with SVM-based weak learners produces better results than with RBF-based. Moreover, the RBF-based weak learner spends more time in both training and testing stages. However, it

is necessary to point out that, in these experiments, the distances between regions using the descriptors are computed during the classification stage. If distances are previously computed, RBF-based weak learners are an alternative since they can be easily implemented.

4) *Hierarchical MS-Classification*: In this section we present the results of the proposed Hierarchical Multi-Scale Classification approach. Table VI presents the overall accuracy and Kappa index for HMSC and MSC approach. Time is presented in Table VII. We used 10 rounds for MSC and 50 rounds for HMSC (10 rounds for each scale). To maintain the detection time of the classifier HMSC equivalent to the MSC, the weak learners with very low weights are excluded from the final classifier: the threshold on the weights is 0.01. This reduces the final classifier to a combination between 10 and 15 weak learners.

TABLE VI
CLASSIFICATION RESULTS COMPARING THE HMSC AGAINST MSC.

Method	Overall Acc. (%)	Kappa (κ)
<i>HMSC</i>	82.69 ±1.68	0.7875 ±0.024
<i>MSC</i>	82.28 ±1.60	0.7800 ±0.025

TABLE VII
TIME SPENT ON CLASSIFICATION FOR MSC AND HMSC.

Method	Training Time (s)	Classification Time (s)
<i>HMSC</i>	13637.62	39.06
<i>MSC</i>	24939.34	38.52

Both methods produced similar values of accuracy. The most important point concerns the training time. As the hierarchical approach does not use all regions of all scales, training time is considerably reduced because the training focuses only on the most difficult regions.

Figure 7 (a) shows a subimage used in these experiments and Figure 7 (b) illustrates the same image with coffee crops, which are the regions of interest in focus. Figures 8 (a) and (b) illustrate an example of results obtained with both methods HMSC and MSC.

Although producing almost the same accuracy rates, the main difference in this examples is that HMSC produces less false positives than MSC (HMSC produces also more false negatives). We assume that the HMSC is more efficient to recognize coffee crops.

We observed that most of the classification errors are related to confusion caused by recently planted coffee crops. These regions usually appear in light blue in the composition of colors displayed (see Figure 7).

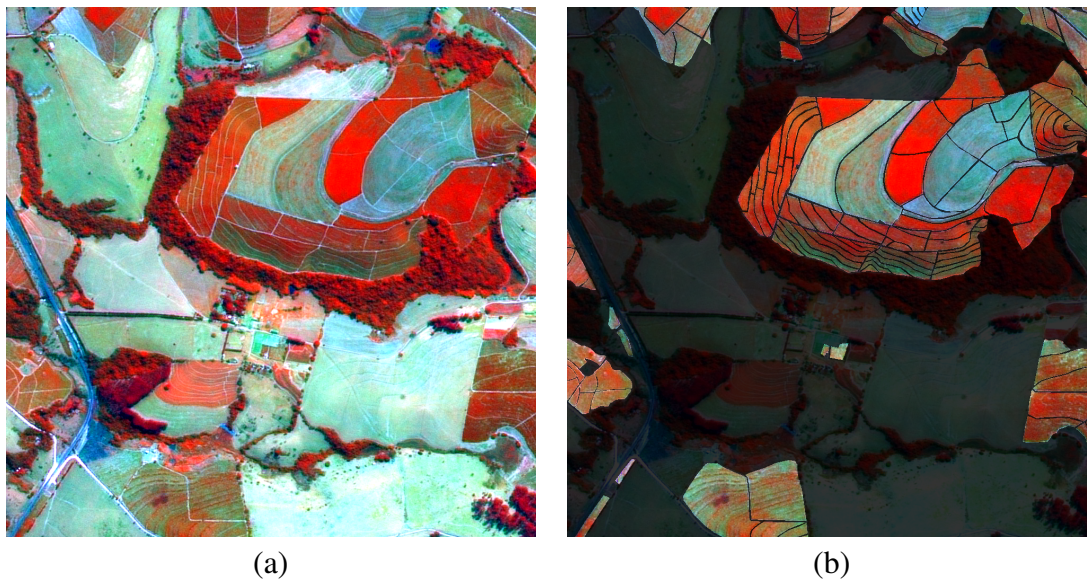


Fig. 7. The image used for classification in Figure 8 (a) and the same image with coffee crops highlighted (b).

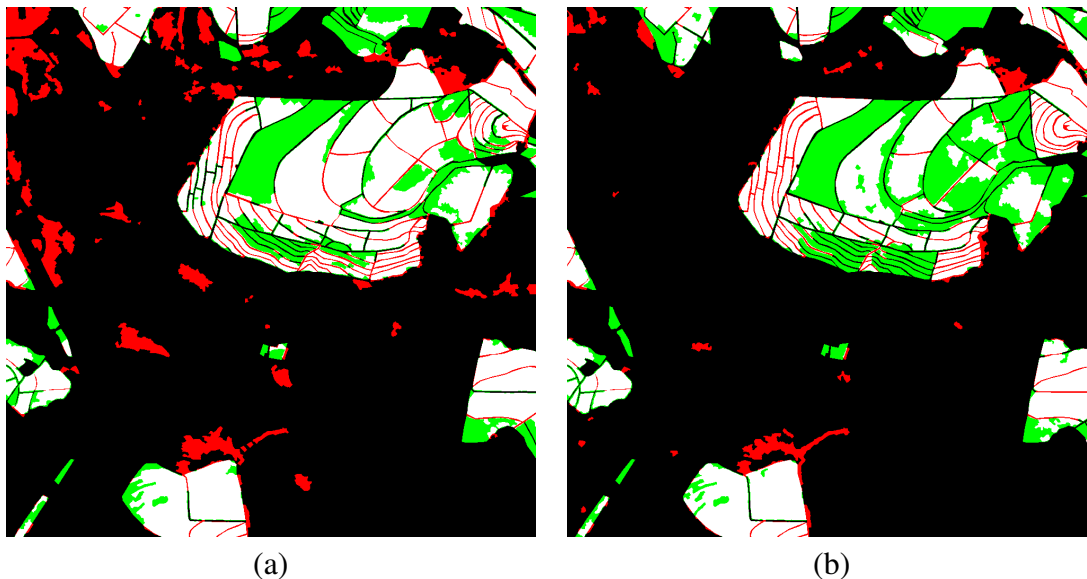


Fig. 8. A result obtained with the proposed methods: MSC (a) and HMSC (b). Pixels correctly classified are shown in white (true positive) and black (true negative) while the errors are displayed in red (false positive) and green (false negative).

5) *Comparison to the baseline:* Although very used in image classification [44], SVMs are so far less used in remote sensing community than other classifiers (e.g., decision trees and variants of neural networks). However, in recent years there has been a significant increase in SVM works achieving very good results in remote sensing problems. Tzotsos et al. [12] have proposed and evaluated SVMs for object-oriented classification. They proposed an approach that uses SVMs with a Gaussian kernel to classify the regions obtained by a multi-scale segmentation process. This approach outperforms the results with the eCognition software [5]. Therefore, we used SVM with Gaussian kernel applied to an intermediate

TABLE VIII

ACCURACY ANALYSIS OF CLASSIFICATION FOR THE EXAMPLE PRESENTED IN FIGURE 8 (TP = TRUE POSITIVE, TN = TRUE NEGATIVE, FP = FALSE POSITIVE, FN = FALSE NEGATIVE).

Method	TP	TN	FP	FN
<i>MSC</i>	194,378	670,493	64,228	70,901
<i>HMSC</i>	167,293	705,196	29,525	97,986

segmentation scale obtained by Guigues method as baseline with BIC descriptor. As the baseline was not designed to use the validation set, we performed these experiments with two settings: 3 subimagens for training and 3 for classification; 6 subimagens for training and 3 for classification. Table IX displays the results.

TABLE IX

CLASSIFICATION RESULTS COMPARING THE MSC, HMSC AND THE BASELINES. *SVM + Gaussian Kernel (3,3)* IS THE BASELINE TRAINED WITH 3 SUBIMAGES. *SVM + Gaussian Kernel (6,3)* IS THE SAME BASELINE TRAINED WITH 6 SUBIMAGES.

Method	Overall Acc. (%)	Kappa (κ)
<i>SVM + Gaussian Kernel (3,3)</i>	77.47 \pm 2.64	0.7054 \pm 0.044
<i>SVM + Gaussian Kernel (6,3)</i>	80.09 \pm 1.58	0.7478 \pm 0.025
<i>MSC (linear SVM learner)</i>	82.28 \pm 1.60	0.7800 \pm 0.025
<i>HMSC (linear SVM learner)</i>	82.69 \pm1.68	0.7875 \pm0.024

As it can be noticed, both MSC and HMSC overcome the results of the baseline. This shows that the combination of descriptors and scales using the strategies proposed in this work can be powerful tools for classification of remote sensing images.

VI. CONCLUSIONS

We can draw the following conclusions from our studies: region classification is a good alternative to pixel classification; the descriptors computed on regions are more reliable than those computed on pixels or on regular blocks; the most relevant regions in different parts and scales of the image and features at various scales can be learned during the design of the classification machine.

The proposed approaches for multiscale image analysis are the Multi-Scale Classifier (MSC) and the Hierarchical Multi-Scale Classifier (HMSC). The MSC is a boosting-based classifier that builds a strong classifier from a set of weak ones. The HMSC is also based on boosting of weak classifiers, but it adopts a sequential strategy of training, according to the hierarchy of scales (from the coarsest to the finest). In this work, we adopted two configurations of weak learners: SVM and RBF. The SVM approach is based on the SVM classifier with linear kernel. The other one is based on the distances provided by Radial

Basis Function. The experimental results shows that the BIC descriptor is presently the most powerful descriptor to detect regions of coffee. The MSC results shows that the combination of scales increase the power of the final classifier.

Our perspectives are firstly to build a very fast classifier by using a cascade of classifiers [45] and secondly to improve the learning set through user interaction.

ACKNOWLEDGMENTS

The authors are grateful to CAPES, FAPESP, and CNPq for the financial support. We are grateful to Jean Pierre Cocquerez for the support concerning the segmentation tool. We also thank Rubens Lamparelli due to the support related to agricultural aspects and the remote sensing dataset.

REFERENCES

- [1] G. Wilkinson, "Results and implications of a study of fifteen years of satellite image classification experiments," *IEEE Transactions on Geoscience and Remote Sensing*, vol. 43, no. 3, pp. 433–440, March 2005.
- [2] W. Zhou, G. Huang, A. Troy, and M. Cadenasso, "Object-based land cover classification of shaded areas in high spatial resolution imagery of urban areas: A comparison study," *Remote Sensing of Environment*, vol. 113, no. 8, pp. 1769 – 1777, 2009.
- [3] R. Showengetdt, *Techniques for Image Processing and Classification in Remote Sensing*. New York: Academic Press, 1983.
- [4] J. A. dos Santos, F. A. Faria, R. T. Calumby, R. da S. Torres, and R. A. C. Lamparelli, "A genetic programming approach for coffee crop recognition," in *IGARSS 2010*, Honolulu, USA, July 2010, pp. 3418–3421.
- [5] U. C. Benz, P. Hofmann, G. Willhauck, I. Lingenfelder, and M. Heynen, "Multi-resolution, object-oriented fuzzy analysis of remote sensing data for gis-ready information," *ISPRS Journal of Photogrammetry and Remote Sensing*, vol. 58, no. 3-4, pp. 239 – 258, 2004, integration of Geodata and Imagery for Automated Refinement and Update of Spatial Databases.
- [6] Y. Chen, W. Su, J. Li, and Z. Sun, "Hierarchical object oriented classification using very high resolution imagery and lidar data over urban areas," *Advances in Space Research*, vol. 43, no. 7, pp. 1101 – 1110, 2009.
- [7] A. Tzotsos, K. Karantzalos, and D. Argialas, "Object-based image analysis through nonlinear scale-space filtering," *ISPRS Journal of Photogrammetry and Remote Sensing*, vol. 66, no. 1, pp. 2–16, 2011.
- [8] Y. O. Ouma, S. Josaphat, and R. Tateishi, "Multiscale remote sensing data segmentation and post-segmentation change detection based on logical modeling: Theoretical exposition and experimental results for forestland cover change analysis," *Computers and Geosciences*, vol. 34, no. 7, pp. 715 – 737, 2008.
- [9] R. Trias-Sanz, G. Stamon, and J. Louchet, "Using colour, texture, and hierarchial segmentation for high-resolution remote sensing," *ISPRS Journal of Photogrammetry and Remote Sensing*, vol. 63, no. 2, pp. 156 – 168, 2008.
- [10] W. jie Wang, Z. ming Zhao, and H. qing Zhu, "Object-oriented change detection method based on multi-scale and multi-feature fusion," in *Urban Remote Sensing Event, 2009 Joint*, may 2009, pp. 1 –5.
- [11] M. Kim, T. A. Warner, M. Madden, and D. S. Atkinson, "Multi-scale geobia with very high spatial resolution digital aerial imagery: scale, texture and image objects," *International Journal of Remote Sensing*, vol. 32, no. 10, pp. 2825–2850, 2011.

- [12] A. Tzotsos and D. Argialas, "Support vector machine classification for object-based image analysis," in *Object-Based Image Analysis*, ser. Lecture Notes in Geoinformation and Cartography, T. Blaschke, S. Lang, and G. J. Hay, Eds. Springer Berlin Heidelberg, 2008, pp. 663–677.
- [13] S. Valero, P. Salembier, and J. Chanussot, "New hyperspectral data representation using binary partition tree," in *Geoscience and Remote Sensing Symposium (IGARSS), 2010 IEEE International*, Honolulu, USA, July 2010, pp. 80–83.
- [14] J. A. dos Santos, C. D. Ferreira, R. da S. Torres, M. A. Gonçalves, and R. A. C. Lamparelli, "A relevance feedback method based on genetic programming for classification of remote sensing images," *Information Sciences*, vol. 181, no. 13, pp. 2671 – 2684, 2011.
- [15] R. E. Schapire, "A brief introduction to boosting," in *Proceedings of the Sixteenth International Joint Conference on Artificial Intelligence*, ser. IJCAI '99, 1999, pp. 1401–1406.
- [16] L. Guigues, J. Cocquerez, and H. Le Men, "Scale-sets image analysis," *International Journal of Computer Vision*, vol. 68, pp. 289–317, 2006.
- [17] D. Lu and Q. Weng, "A survey of image classification methods and techniques for improving classification performance," *Int. J. Remote Sens.*, vol. 28, no. 5, pp. 823–870, 2007.
- [18] X. Gigandet, M. Cuadra, A. Pointet, L. Cammoun, R. Caloz, and J.-P. Thiran, "Region-based satellite image classification: method and validation," *ICIP 2005.*, vol. 3, pp. III–832–5, September 2005.
- [19] J. Lee and T. A. Warner, "Image classification with a region based approach in high spatial resolution imagery," in *Int. Archives of Photogrammetry, Remote Sensing and Spatial Inf. Sciences*, Istanbul, Turkey, July 2004, pp. 181–187.
- [20] Q. Yu, P. Gong, N. Clinton, G. Biging, M. Kelly, and D. Schirokauer, "Object-based detailed vegetation classification with airborne high spatial resolution remote sensing imagery," *Photogrammetric Engineering Remote Sensing*, vol. 72, no. 7, pp. 799–811, 2006.
- [21] A. Katartzis, I. Vanhamel, and H. Sahli, "A hierarchical markovian model for multiscale region-based classification of vector-valued images," *IEEE Transactions on Geoscience and Remote Sensing*, vol. 43, no. 3, pp. 548–558, March 2005.
- [22] T. Blaschke, "Object based image analysis for remote sensing," *ISPRS Journal of Photogrammetry and Remote Sensing*, vol. 65, no. 1, pp. 2 – 16, 2010.
- [23] Castillejo-González, López-Granados, García-Ferrer, Peña-Barragán, Jurado-Expósito, de la Orden, and González-Audicana, "Object- and pixel-based analysis for mapping crops and their agro-environmental associated measures using quickbird imagery," *Computers and Electronics in Agriculture*, vol. 68, no. 2, pp. 207 – 215, 2009.
- [24] S. W. Myint, P. Gober, A. Brazel, S. Grossman-Clarke, and Q. Weng, "Per-pixel vs. object-based classification of urban land cover extraction using high spatial resolution imagery," *Remote Sensing of Environment*, vol. 115, no. 5, pp. 1145 – 1161, 2011.
- [25] R. Gaetano, G. Scarpa, and G. Poggi, "Hierarchical texture-based segmentation of multiresolution remote-sensing images," *Geoscience and Remote Sensing, IEEE Transactions on*, vol. 47, no. 7, pp. 2129 –2141, July 2009.
- [26] Z. Wang, J. R. Jensen, and J. Im, "An automatic region-based image segmentation algorithm for remote sensing applications," *Environ. Model. Softw.*, vol. 25, pp. 1149–1165, October 2010.
- [27] N. Li, H. Huo, and T. Fang, "A novel texture-preceded segmentation algorithm for high-resolution imagery," *Geoscience and Remote Sensing, IEEE Transactions on*, no. 99, pp. 1 –11, 2010.
- [28] J. Chen, D. Pan, and Z. Mao, "Imageobject detectable in multiscale analysis on highresolution remotely sensed imagery," *International Journal of Remote Sensing*, vol. 30, no. 14, pp. 3585–3602, 2009.
- [29] A. Tzotsos, C. Iosifidis, and D. Argialas, "A hybrid texture-based and region-based multi-scale image segmentation algorithm," in *Object-Based Image Analysis*, ser. Lecture Notes in Geoinformation and Cartography, T. Blaschke, S. Lang, and G. J. Hay, Eds. Springer Berlin Heidelberg, 2008, pp. 221–236.
- [30] H. Li, H. Gu, Y. Han, and J. Yang, "An efficient multiscale srmhr (statistical region merging and minimum heterogeneity rule)

- segmentation method for high-resolution remote sensing imagery,” *Selected Topics in Applied Earth Observations and Remote Sensing, IEEE Journal of*, vol. 2, no. 2, pp. 67–73, June 2009.
- [31] D. Mumford and J. Shah, “Optimal approximations by piecewise smooth functions and associated variational problems,” *Communications on Pure and Applied Mathematics*, vol. 42, no. 5, pp. 577–685, 1989.
- [32] R. da S. Torres and A. X. Falcão, “Content-Based Image Retrieval: Theory and Applications,” *Revista de Informática Teórica e Aplicada*, vol. 13, no. 2, pp. 161–185, 2006.
- [33] M. J. Swain and D. H. Ballard, “Color indexing,” *International Journal of Computer Vision*, vol. 7, no. 1, pp. 11–32, 1991.
- [34] G. Pass, R. Zabih, and J. Miller, “Comparing images using color coherence vectors,” in *ACM Multimedia*, 1996, pp. 65–73.
- [35] J. Huang, S. R. Kumar, M. Mitra, W. Zhu, and R. Zabih, “Image indexing using color correlograms,” in *Proceedings of the 1997 Conference on Computer Vision and Pattern Recognition*, Washington, DC, USA, 1997, p. 762.
- [36] R. de O. Stehling, M. A. Nascimento, and A. X. Falcão, “A compact and efficient image retrieval approach based on border/interior pixel classification,” in *CIKM*, New York, NY, USA, 2002, pp. 102–109.
- [37] J. A. dos Santos, O. A. B. Penatti, and R. da S. Torres, “Evaluating the potential of texture and color descriptors for remote sensing image retrieval and classification,” in *VISAPP 2010*, Angers, France, May 2010, pp. 203–208.
- [38] J. A. M. Zegarra, N. J. Leite, and R. d. S. Torres, “Rotation-invariant and scale-invariant steerable pyramid decomposition for texture image retrieval,” in *XX Brazilian Symposium on Computer Graphics and Image Processing*, 2007, pp. 121–128.
- [39] M. Unser, “Sum and difference histograms for texture classification,” *IEEE Transactions on Pattern Analysis and Machine Intelligence*, vol. 8, no. 1, pp. 118–125, 1986.
- [40] C. Huang and Q. Liu, “An orientation independent texture descriptor for image retrieval,” *International Conference on Communications, Circuits and Systems*, pp. 772–776, July 2007.
- [41] T. M. Lillesand, R. W. Kiefer, and J. W. Chipman, *Remote Sensing and Image Interpretation*. Wiley, 2007.
- [42] R. G. Congalton and K. Green, *Assessing the Accuracy of Remotely Sensed Data: Principles and Practices*. Washington, DC: Lewis Publishers, 1977.
- [43] J. R. Landis and G. G. Koch, “The measurement of observer agreement for categorical data,” *Biometrics*, vol. 33, no. 1, pp. 159–174, March 1977.
- [44] G. Mountrakis, J. Im, and C. Ogole, “Support vector machines in remote sensing: A review,” *ISPRS Journal of Photogrammetry and Remote Sensing*, vol. 66, no. 3, pp. 247–259, 2011.
- [45] P. Viola and M. Jones, “Rapid object detection using a boosted cascade of simple features,” *Computer Vision and Pattern Recognition, IEEE Computer Society Conference on*, vol. 1, p. 511, 2001.