



HAL
open science

Mathematical Modeling of Fiber Reinforced Structures by Homogenization

Somsak Orankitjaroen, Nuttawat Sontichai, Christian Licht, Amnuay
Kananthai

► **To cite this version:**

Somsak Orankitjaroen, Nuttawat Sontichai, Christian Licht, Amnuay Kananthai. Mathematical Modeling of Fiber Reinforced Structures by Homogenization. 13th Annual Meeting in Mathematics 2007, May 2008, Thailand. pp.103-115. hal-00746943

HAL Id: hal-00746943

<https://hal.science/hal-00746943>

Submitted on 30 Oct 2012

HAL is a multi-disciplinary open access archive for the deposit and dissemination of scientific research documents, whether they are published or not. The documents may come from teaching and research institutions in France or abroad, or from public or private research centers.

L'archive ouverte pluridisciplinaire **HAL**, est destinée au dépôt et à la diffusion de documents scientifiques de niveau recherche, publiés ou non, émanant des établissements d'enseignement et de recherche français ou étrangers, des laboratoires publics ou privés.

Mathematical Modeling of Fiber Reinforced Structures by Homogenization

Somsak Orankitjaroen¹, Nuttawat Sontichai²,
Christian Licht³, Amnuay Kananthai⁴

^{1,2}Department of Mathematics, Mahidol University

³Mécanique et Génie Civil Université, Montpellier II

⁴Department of Mathematics, Chiang Mai University

Abstract : We present another proof of a study of Bellieud and Bouchitté that we expect to be more suitable to treat more general geometrical and physical cases. We consider the homogenization of the quasi-linear elliptic problem

$$\begin{aligned} -\operatorname{div} \sigma_\varepsilon &= f, \quad \sigma_\varepsilon = a_\varepsilon |\nabla u_\varepsilon|^{p-2} \nabla u_\varepsilon && \text{on } \Omega \\ u_\varepsilon &= u_0 && \text{on } \Gamma_0 \\ \sigma_\varepsilon \cdot n &= g && \text{on } \Gamma_1 \end{aligned}$$

where Ω is a bounded cylindrical open subset of \mathbb{R}^3 and $1 < p < +\infty$. The fibers occupy a set of thin parallel cylinders periodically distributed in Ω . The conductivity coefficient a_ε is ε -periodic and takes very high values in the fibers.

Keywords : Variational convergence, Homogenization

2000 Mathematics Subject Classification : ??? 2000 MSC ???

1 Introduction

Let $p \in (1, +\infty)$, we consider the homogenization of the elliptic problem

$$\begin{aligned} -\operatorname{div} \sigma_\varepsilon &= f, \quad \sigma_\varepsilon = a_\varepsilon |\nabla u_\varepsilon|^{p-2} \nabla u_\varepsilon && \text{on } \Omega \\ u_\varepsilon &= u_0 && \text{on } \Gamma_0 \\ \sigma_\varepsilon \cdot n &= g && \text{on } \Gamma_1 \end{aligned} \tag{1.1}$$

where $\Omega := \omega \times (0, L)$ with $L > 0$ and ω is a bounded domain of \mathbb{R}^2 with smooth boundary and containing the origin of coordinates. The homogenization study of (1.1) consists in examining the behavior of the sequence of the solution (u_ε) as ε tends to zero. The conductivity coefficient a_ε is ε -periodic and satisfies a uniform lower bound, Γ_0 is an open subset of $\partial\Omega$ with Hausdorff measure $H^2(\Gamma_0)$ strictly positive, $\Gamma_1 = \partial\Omega \setminus \Gamma_0$, and n is the unit exterior normal on $\partial\Omega$. The boundary data u_0 is Lipschitz, while $(f, g) \in L^{p'}(\Omega) \times L^{p'}(\Gamma_1)$, $p' = p/(p-1)$.

²Corresponding author: aoon_mu@hotmail.com

The problem (1.1) is related to the minimization problem

$$(\mathcal{P}_\varepsilon) \quad \min \left\{ F_\varepsilon(w) - L(w) : w \in W_{\Gamma_0}^{1,p}(\Omega) \right\},$$

where

$$\begin{aligned} W_{\Gamma_0}^{1,p}(\Omega) &:= \left\{ w \in W^{1,p}(\Omega) : w = u_0 \text{ on } \Gamma_0 \right\}, \\ F_\varepsilon(w) &:= \int_{\Omega} a_\varepsilon \phi_p(\nabla w) \, dx, \\ \phi_p(\xi) &:= \frac{1}{p} |\xi|^p, \quad \forall \xi \in \mathbb{R}^n, n = 1, 2, 3, \\ L(w) &:= \int_{\Omega} f w \, dx + \int_{\Gamma_1} g w \, dH^2. \end{aligned} \quad (1.2)$$

We are interested in the asymptotic behavior of $(\mathcal{P}_\varepsilon)$ as $\varepsilon \rightarrow 0$. We present another proof of a study of Bellieud and Bouchitté [2] that we expect to be more suitable to treat more general geometrical and physical cases.

The bases of the cylindrical domain Ω are denoted by $\omega_0 = \omega \times \{0\}$ and $\omega_L = \omega \times \{L\}$. For each ε , we consider a periodic distribution of cells $(Y_\varepsilon^i)_{i \in I_\varepsilon}$ such that $Y_\varepsilon^i := (\varepsilon i_1, \varepsilon i_2) + (-\varepsilon/2, \varepsilon/2)^2$, and $I_\varepsilon := \{i \in \mathbb{Z}^2 : Y_\varepsilon^i \subset \omega\}$. Let $(D_{r_\varepsilon}^i)_{i \in I_\varepsilon}$ be the family of disks of \mathbb{R}^2 centered at $\hat{x}_\varepsilon^i := (\varepsilon i_1, \varepsilon i_2)$ of radius $r_\varepsilon \ll \varepsilon$, $T_\varepsilon^i := D_{r_\varepsilon}^i \times (0, L)$ and $T_\varepsilon := \cup_{i \in I_\varepsilon} T_\varepsilon^i$. The set of thin parallel cylinders T_ε represents the fibers (see Figure 1 and Figure 2). The conductivity coefficient a_ε is

$$a_\varepsilon(x) = \begin{cases} 1 & \text{if } x \in \Omega \setminus T_\varepsilon, \\ \lambda_\varepsilon & \text{otherwise.} \end{cases}$$

We make the assumptions

$$r_\varepsilon \rightarrow 0, \quad \frac{r_\varepsilon}{\varepsilon} \rightarrow 0, \quad \lambda_\varepsilon \rightarrow +\infty, \quad k_\varepsilon := \lambda_\varepsilon \frac{r_\varepsilon^2}{\varepsilon^2} \rightarrow k, \quad k \geq 0 \quad \text{as } \varepsilon \rightarrow 0. \quad (1.3)$$

In [2], it was shown that the asymptotic limit of $(\mathcal{P}_\varepsilon)$ is

$$\min \left\{ \Phi(u, v) - L(u) : (u, v) \in (L^p(\Omega))^2 \right\},$$

where

$$\Phi(u, v) = \begin{cases} \int_{\Omega} \phi_p(\nabla u) \, dx + \frac{k\pi}{p} \int_{\Omega} \left| \frac{\partial v}{\partial x_3} \right|^p \, dx + \frac{2\pi\gamma}{p} \int_{\Omega} |v - u|^p \, dx, \\ \text{if } \begin{cases} (u, v) \in W_{\Gamma_0}^{1,p}(\Omega) \times L^p(\omega, W^{1,p}(0, L)), \\ v = u_0 \text{ on } \Gamma_0 \cap (\omega_0 \cup \omega_L), \end{cases} \\ +\infty \quad \text{otherwise,} \end{cases} \quad (1.4)$$

and

$$[0, +\infty] \ni \gamma = \begin{cases} \lim_{\varepsilon \rightarrow 0} \varepsilon^{-2} |\log r_\varepsilon|^{-1} & \text{if } p = 2, \\ \lim_{\varepsilon \rightarrow 0} \left| \frac{2-p}{p-1} \right|^{p-1} r_\varepsilon^{2-p} \varepsilon^{-2} & \text{if } p \neq 2. \end{cases} \quad (1.5)$$

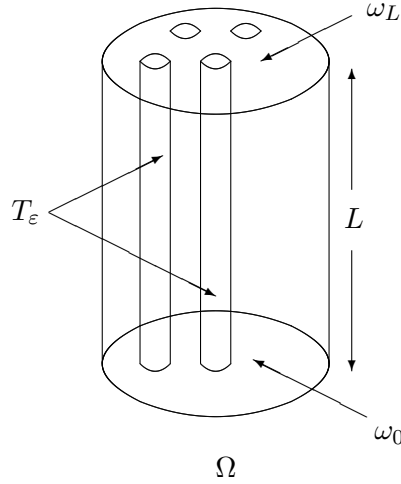


Figure 1: the domain $\Omega = \omega \times (0, L)$ occupied by a composite material

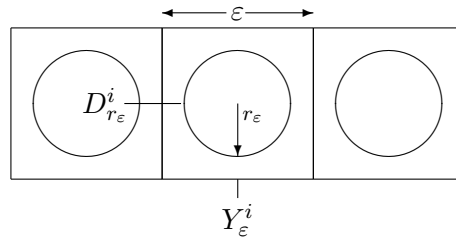


Figure 2: the circular cross section of the fiber, $Y_\epsilon^i \subset \omega$

Here, the boundary data u_0 is assumed to be Lipschitz in order to ensure that the infimum value of problem (\mathcal{P}_ϵ) remains finite as $\epsilon \rightarrow 0$. In case $k = +\infty$, we add further assumption

$$k_\epsilon r_\epsilon \rightarrow 0, \quad \text{as } \epsilon \rightarrow 0. \quad (1.6)$$

The conditions

$$k > 0 \quad \text{and} \quad \{ \gamma > 0 \quad \text{or} \quad \omega_0 \subset \Gamma_0 \quad \text{or} \quad \omega_L \subset \Gamma_0 \} \quad (1.7)$$

guarantee that the functional Φ is coercive in $W^{1,p}(\Omega) \times L^p(\omega, W^{1,p}(0, L))$.

We are concerned with the extension of this result to more general cross sections of the fibers and more general energy density than ϕ_p . The aim of this paper is therefore to provide another proof that we expect to be more suitable to treat such general cases. The steps of the proof in [2] are to successively establish:

- (i) a compactness property of the sequence (u_ϵ) such that $F_\epsilon(u_\epsilon) < C$,

- (ii) a lower bound inequality of the sequence $(F_\varepsilon(u_\varepsilon))$,
- (iii) an upper bound inequality of the sequence $(F_\varepsilon(u_\varepsilon))$.

Here we replace the steps (ii) and (iii) by

- (ii') an upper equality of the sequence $(F_\varepsilon(u_\varepsilon))$,
- (iii') a lower bound inequality of the sequence $(F_\varepsilon(u_\varepsilon))$ which essentially uses a subdifferential inequality.

2 An Alternative Strategy

It consists, under (1.3), (1.5), (1.6) and (1.7), in proving the following three propositions. In the sequel, the symbols \rightarrow , \rightharpoonup and $\overset{*}{\rightharpoonup}$ stand for the strong convergence, the weak convergence and the weak star convergence, respectively. As usual, the letter C denotes various constants and for all $\xi = (\xi_1, \xi_2, \xi_3)$ in \mathbb{R}^3 , $\hat{\xi}$ stands for (ξ_1, ξ_2) .

Proposition 2.1 (compactness property) *Let (u_ε) be a sequence such that $\sup F_\varepsilon(u_\varepsilon)$ is finite. Then (u_ε) is strongly relatively compact in $L^p(\Omega)$ and (v_ε) , given by $v_\varepsilon := \frac{|\Omega|}{|T_\varepsilon|} 1_{T_\varepsilon} u_\varepsilon$, is bounded in $L^1(\Omega)$ and, up to a subsequence, (v_ε) weakly* converges in the space of bounded measures $\mathcal{M}_b(\Omega)$ to an element v of $L^p(\Omega)$.*

Proposition 2.2 (upper bound equality) *For all (u, v) in $(L^p(\Omega))^2$, such that $\Phi(u, v) < +\infty$, there exists a sequence (u_ε) such that $u_\varepsilon \rightarrow u$ in $L^p(\Omega)$, $v_\varepsilon \overset{*}{\rightharpoonup} v$ in $\mathcal{M}_b(\Omega)$ and*

$$\lim_{\varepsilon \rightarrow 0} F_\varepsilon(u_\varepsilon) = \Phi(u, v).$$

Proposition 2.3 (lower bound inequality) *For all u in $L^p(\Omega)$ and for all sequences (u_ε) such that $u_\varepsilon \rightarrow u$ in $L^p(\Omega)$, $v_\varepsilon \overset{*}{\rightharpoonup} v$ in $\mathcal{M}_b(\Omega)$, one has:*

$$\liminf_{\varepsilon \rightarrow 0} F_\varepsilon(u_\varepsilon) \geq \Phi(u, v).$$

The proofs of these propositions are presented in the following sections.

2.1 Proof of Proposition 2.1

Compactness property was already proved in [2].

2.2 Proof of Proposition 2.2

Our sole contribution is to prove that we can replace inequality by equality, for that we use the same approximation u'_ε of u as in [2]

$$u'_\varepsilon = (1 - \theta_\varepsilon)u + \theta_\varepsilon w_\varepsilon.$$

The function θ_ε is first defined on the closure of $\omega_\varepsilon := \cup_{i \in I_\varepsilon} Y_\varepsilon^i$ as a $(-\varepsilon/2, \varepsilon/2)^2$ -periodic continuous function which satisfies $0 \leq \theta_\varepsilon \leq 1$, $\theta_\varepsilon = 1$ on $D_\varepsilon := \cup_{i \in I_\varepsilon} D_{r_\varepsilon}^i$, $\theta_\varepsilon = 0$ on $\bar{\omega}_\varepsilon \setminus \cup_{i \in I_\varepsilon} D_{R_\varepsilon}^i$, where $D_{R_\varepsilon}^i$ is the disk of \mathbb{R}^2 centered at \hat{x}_ε^i of radius R_ε such that $r_\varepsilon \ll R_\varepsilon \ll \varepsilon$. Next θ_ε is assumed to vanish on $\bar{\omega} \setminus \omega_\varepsilon$ and

$$w_\varepsilon(\hat{x}, x_3) = \sum_{i \in I_\varepsilon} \left(\frac{1}{|D_{r_\varepsilon}^i|} \int_{D_{r_\varepsilon}^i} v(\hat{y}, x_3) d\hat{y} \right) 1_{Y_\varepsilon^i}(\hat{x}).$$

The approximation u'_ε does not satisfy the boundary condition on $\Gamma_0 \cap (\omega_0 \cup \omega_L)$ so that, as in [2], we introduce a sharper approximation

$$u_\varepsilon^\# := u\varphi_\varepsilon + u'_\varepsilon(1 - \varphi_\varepsilon).$$

Here φ_ε is a $C^\infty(\overline{\Omega})$ function which satisfies $\varphi_\varepsilon = 1$ on Γ_0 , $\varphi_\varepsilon = 0$ on $\overline{\Omega} \setminus \Sigma_\varepsilon$, $|\nabla\varphi_\varepsilon| \leq C/r_\varepsilon$ on $\overline{\Omega}$ where $\Sigma_\varepsilon := \{x \in \Omega : \text{dist}(x, \Gamma_0) < r_\varepsilon\}$. We assume that u and v are Lipschitz on $\overline{\Omega}$ and there exists $L > 0$ such that

$$\left| \frac{\partial v}{\partial x_3}(\hat{x}', x_3) - \frac{\partial v}{\partial x_3}(\hat{x}'', x_3) \right| < L|\hat{x}' - \hat{x}''| \quad \forall (\hat{x}', x_3), (\hat{x}'', x_3) \in \overline{\Omega}. \quad (2.1)$$

Letting Ψ be any continuous function on $\overline{\Omega}$ such that $0 \leq \Psi \leq 1$, we introduce F_ε^Ψ , Φ^Ψ defined by similar formulae as the ones of F_ε and Φ but with Ψdx in place of dx . We will prove the lemma:

Lemma 2.4

$$\lim_{\varepsilon \rightarrow 0} F_\varepsilon^\Psi(u'_\varepsilon) = \Phi^\Psi(u, v).$$

If Lemma 2.4 is proved, then, by a classical approximation process, we can deduce

$$\lim_{\varepsilon \rightarrow 0} F_\varepsilon(u'_\varepsilon) = \Phi(u, v). \quad (2.2)$$

Finally, we complete the proof of (2.2) for any (u, v) such that $\Phi(u, v) < +\infty$ by approximation and diagonalization arguments.

Proof of Lemma 2.4. We split $F_\varepsilon^\Psi(u'_\varepsilon)$ in three parts

$$F_\varepsilon^\Psi(u'_\varepsilon) = F_\varepsilon^{\Psi 1}(u'_\varepsilon) + F_\varepsilon^{\Psi 2}(u'_\varepsilon) + F_\varepsilon^{\Psi 3}(u'_\varepsilon). \quad (2.3)$$

First, we consider

$$F_\varepsilon^{\Psi 1}(u'_\varepsilon) := \int_{\Omega \setminus B_\varepsilon \cup T_\varepsilon} \phi_p(\nabla u'_\varepsilon) \Psi dx = \int_{\Omega \setminus B_\varepsilon \cup T_\varepsilon} \phi_p(\nabla u) \Psi dx,$$

where $B_\varepsilon := \cup_{i \in I_\varepsilon} D_{R_\varepsilon}^i \setminus \overline{D_{r_\varepsilon}^i} \times (0, L)$. Hence, the assumption $R_\varepsilon \ll \varepsilon$ yields $\lim_{\varepsilon \rightarrow 0} |B_\varepsilon \cup T_\varepsilon| = 0$ and, consequently,

$$\lim_{\varepsilon \rightarrow 0} F_\varepsilon^{\Psi 1}(u'_\varepsilon) = \int_{\Omega} \phi_p(\nabla u) \Psi dx.$$

Next, we pay attention to

$$F_\varepsilon^{\Psi 2}(u'_\varepsilon) := \int_{B_\varepsilon} \phi_p(\nabla u'_\varepsilon) \Psi dx.$$

Writing

$$z_\varepsilon := (v - u) \widehat{\nabla} \theta_\varepsilon, \quad (2.4)$$

we obtain

$$\nabla u'_\varepsilon = z_\varepsilon + (w_\varepsilon - v)\nabla\theta_\varepsilon + (1 - \theta_\varepsilon)\nabla u + \theta_\varepsilon\nabla w_\varepsilon.$$

Let us show

$$\lim_{\varepsilon \rightarrow 0} \int_{B_\varepsilon} (\phi_p(\nabla u'_\varepsilon) - \phi_p(z_\varepsilon))\Psi \, dx = 0. \quad (2.5)$$

The function ϕ_p , being convex and positively homogeneous of degree p , satisfies

$$\forall \xi, \eta \in \mathbb{R}^n, \quad n = 1, 2, 3, \quad |\phi_p(\xi) - \phi_p(\eta)| \leq C|\xi - \eta|(|\xi|^{p-1} + |\eta|^{p-1}). \quad (2.6)$$

Therefore, Hölder inequality yields

$$\left| \int_{B_\varepsilon} (\phi_p(\nabla u'_\varepsilon) - \phi_p(z_\varepsilon))\Psi \, dx \right| \leq C \left(\int_{B_\varepsilon} |\nabla u'_\varepsilon - z_\varepsilon|^p \, dx \right)^{\frac{1}{p}} \left(\int_{B_\varepsilon} |\nabla u'_\varepsilon|^p \, dx + \int_{B_\varepsilon} |z_\varepsilon|^p \, dx \right)^{\frac{1}{p'}}.$$

The smoothness of (u, v) implies

$$\left. \begin{aligned} u'_\varepsilon &= u \text{ on } \Omega \setminus (B_\varepsilon \cup T_\varepsilon), & |u'_\varepsilon| &\leq C \text{ on } \Omega, & |\nabla w_\varepsilon| &\leq C \text{ on } B_\varepsilon, \\ u'_\varepsilon &= w_\varepsilon \text{ on } T_\varepsilon, & |w_\varepsilon - v| &\leq CR_\varepsilon \text{ on } B_\varepsilon, \end{aligned} \right\} \quad (2.7)$$

so that

$$\begin{aligned} \int_{B_\varepsilon} |\nabla u'_\varepsilon|^p \, dx + \int_{B_\varepsilon} |z_\varepsilon|^p \, dx &\leq C\varepsilon^{-2} \int_{D(r_\varepsilon, R_\varepsilon)} \phi_p(\widehat{\nabla}\theta_\varepsilon) \, d\hat{x}, \\ \int_{B_\varepsilon} |\nabla u'_\varepsilon - z_\varepsilon|^p \, dx &\leq CR_\varepsilon^p \varepsilon^{-2} \int_{D(r_\varepsilon, R_\varepsilon)} \phi_p(\widehat{\nabla}\theta_\varepsilon) \, d\hat{x}, \end{aligned}$$

where $D(r_\varepsilon, R_\varepsilon) = \{\hat{x} \in \mathbb{R}^2 : r_\varepsilon < |\hat{x}| < R_\varepsilon\}$. Hence, if we choose θ_ε such that

$$\exists M > 0; \quad \varepsilon^{-2} \int_{D(r_\varepsilon, R_\varepsilon)} \phi_p(\widehat{\nabla}\theta_\varepsilon) \, d\hat{x} \leq M \quad \forall \varepsilon > 0, \quad (2.8)$$

then (2.5) is true. We finally have

$$\begin{aligned} &\lim_{\varepsilon \rightarrow 0} F_\varepsilon^{\Psi^2}(u'_\varepsilon) \\ &= \lim_{\varepsilon \rightarrow 0} \int_{B_\varepsilon} \phi_p(z_\varepsilon)\Psi \, dx \\ &= \lim_{\varepsilon \rightarrow 0} \int_{B_\varepsilon} |v - u|^p \phi_p(\widehat{\nabla}\theta_\varepsilon)\Psi \, dx \\ &= \lim_{\varepsilon \rightarrow 0} \int_{D(r_\varepsilon, R_\varepsilon)} \phi_p(\widehat{\nabla}\theta_\varepsilon) \, d\hat{x} \int_0^L \sum_{i \in I_\varepsilon} |v - u|^p(\hat{y}_\varepsilon^i, x_3) \Psi(\hat{y}_\varepsilon^i, x_3) \, dx_3 \quad (\text{with } \hat{y}_\varepsilon^i \in Y_\varepsilon^i) \\ &= \lim_{\varepsilon \rightarrow 0} \varepsilon^{-2} \int_{D(r_\varepsilon, R_\varepsilon)} \phi_p(\widehat{\nabla}\theta_\varepsilon) \, d\hat{x} \int_0^L \sum_{i \in I_\varepsilon} |Y_\varepsilon^i| |v - u|^p(\hat{y}_\varepsilon^i, x_3) \Psi(\hat{y}_\varepsilon^i, x_3) \, dx_3. \end{aligned}$$

Observe that $\lim_{\varepsilon \rightarrow 0} \int_0^L \sum_{i \in I_\varepsilon} |Y_\varepsilon^i| |v - u|^p (\hat{y}_\varepsilon^i, x_3) \Psi(\hat{y}_\varepsilon^i, x_3) dx_3 = \int_\Omega |v - u|^p \Psi dx$. To get the lowest upper bound in Proposition 2.2, it is clear that θ_ε has to be the solution of the capacity problem

$$(\mathcal{P}_\varepsilon^{\text{cap}}) \quad \min \left\{ \int_{D(r_\varepsilon, R_\varepsilon)} \phi_p(\widehat{\nabla} \varphi) d\hat{x} : \begin{array}{l} \varphi \in W^{1,p}(D(r_\varepsilon, R_\varepsilon)), \\ \varphi(\hat{x}) = 1 \text{ on } |\hat{x}| = r_\varepsilon, \\ \varphi(\hat{x}) = 0 \text{ on } |\hat{x}| = R_\varepsilon. \end{array} \right\}$$

As observed in [2], we have

$$\theta_\varepsilon = \begin{cases} \frac{\log R_\varepsilon - \log |\hat{x}|}{\log R_\varepsilon - \log r_\varepsilon} & \text{if } p = 2, \\ \frac{R_\varepsilon^s - |\hat{x}|^s}{R_\varepsilon^s - r_\varepsilon^s} & \text{if } p \neq 2 \quad (s = \frac{p-2}{p-1}) \end{cases}$$

and

$$\int_{D(r_\varepsilon, R_\varepsilon)} \phi_p(\widehat{\nabla} \theta_\varepsilon) d\hat{x} = \frac{2\pi}{p} \Gamma_p(r_\varepsilon, R_\varepsilon),$$

$$\text{where } \Gamma_p(r_\varepsilon, R_\varepsilon) := \begin{cases} \frac{1}{\log R_\varepsilon - \log r_\varepsilon} & \text{if } p = 2, \\ \left(\frac{s}{R_\varepsilon^s - r_\varepsilon^s} \right)^{p-1} & \text{if } p \neq 2 \quad (s = \frac{p-2}{p-1}). \end{cases}$$

Note that

$$\lim_{\varepsilon \rightarrow 0} \varepsilon^{-2} \Gamma_p(r_\varepsilon, R_\varepsilon) = \gamma.$$

If $\gamma < +\infty$, then (2.8) is satisfied and

$$\lim_{\varepsilon \rightarrow 0} F_\varepsilon^{\Psi 2}(u'_\varepsilon) = \frac{2\pi\gamma}{p} \int_\Omega |v - u|^p \Psi dx.$$

When $\gamma = +\infty$, it suffices to prove that $\lim_{\varepsilon \rightarrow 0} F_\varepsilon^{\Psi 2}(u'_\varepsilon) = 0$. Due to (2.7), the result is a consequence of $F_\varepsilon^{\Psi 2}(u'_\varepsilon) \leq CR_\varepsilon^p \varepsilon^{-2} \Gamma_p(r_\varepsilon, R_\varepsilon)$, which tends to zero.

Now, we consider the remaining part

$$F_\varepsilon^{\Psi 3}(u'_\varepsilon) := \int_{T_\varepsilon} \lambda_\varepsilon \phi_p(\nabla w_\varepsilon) \Psi dx.$$

Recalling the assumption (2.1) on v and using the local Lipschitz property (2.6), we deduce

$$\begin{aligned} \lim_{\varepsilon \rightarrow 0} F_\varepsilon^{\Psi 3}(u'_\varepsilon) &= \lim_{\varepsilon \rightarrow 0} \frac{1}{|T_\varepsilon|} \int_{T_\varepsilon} \lambda_\varepsilon \phi_p \left(\frac{\partial v}{\partial x_3} \right) \Psi dx \\ &= \frac{k\pi}{p} \int_\Omega \left| \frac{\partial v}{\partial x_3} \right|^p \Psi dx, \end{aligned}$$

as shown in [2]. ■

Now, we will prove the upper bound equality by using the sharper approximation $(u_\varepsilon^\#)$. We start with

$$F_\varepsilon(u_\varepsilon^\#) = \int_{\Sigma_\varepsilon} a_\varepsilon \phi_p(\nabla u_\varepsilon^\#) dx + \int_{\Omega \setminus \Sigma_\varepsilon} a_\varepsilon \phi_p(\nabla u'_\varepsilon) dx. \quad (2.9)$$

Conditions (2.7) imply $|u'_\varepsilon - u| \leq C(r_\varepsilon 1_{T_\varepsilon} + R_\varepsilon 1_{B_\varepsilon})$. Hence

$$\int_{\Sigma_\varepsilon} a_\varepsilon \phi_p(\nabla u_\varepsilon^\#) dx \leq C \left(|\Sigma_\varepsilon| + \int_{\Sigma_\varepsilon} a_\varepsilon(x) |\nabla u'_\varepsilon|^p dx + \lambda_\varepsilon |T_\varepsilon \cap \Sigma_\varepsilon| + \left(\frac{R_\varepsilon}{r_\varepsilon} \right)^p |\Sigma_\varepsilon| \right).$$

Lemma 2.4 implies that for every $\Psi \in C^0(\bar{\Omega}, [0, 1])$, such that $\Psi = 1$ on a small neighborhood of $\Gamma_0 \cap (\omega_0 \cup \omega_L)$,

$$\begin{aligned} \limsup_{\varepsilon \rightarrow 0} \int_{\Sigma_\varepsilon} a_\varepsilon \phi_p(\nabla u_\varepsilon^\#) dx &\leq \limsup_{\varepsilon \rightarrow 0} \int_{\Omega} a_\varepsilon \phi_p(\nabla u'_\varepsilon) \Psi dx \\ &= \int_{\Omega} \left(\phi_p(\nabla u) + \frac{k\pi}{p} \left| \frac{\partial v}{\partial x_3} \right|^p + \frac{2\pi\gamma}{p} |v - u|^p \right) \Psi dx. \end{aligned}$$

Thus, by letting Ψ tend to zero, we deduce

$$\lim_{\varepsilon \rightarrow 0} \int_{\Sigma_\varepsilon} a_\varepsilon \phi_p(\nabla u_\varepsilon^\#) dx = \lim_{\varepsilon \rightarrow 0} \int_{\Sigma_\varepsilon} a_\varepsilon \phi_p(\nabla u'_\varepsilon) dx = 0,$$

and

$$\begin{aligned} \lim_{\varepsilon \rightarrow 0} \int_{\Omega \setminus \Sigma_\varepsilon} a_\varepsilon \phi_p(\nabla u'_\varepsilon) dx &= \lim_{\varepsilon \rightarrow 0} \left(\int_{\Omega} a_\varepsilon \phi_p(\nabla u'_\varepsilon) dx - \int_{\Sigma_\varepsilon} a_\varepsilon \phi_p(\nabla u'_\varepsilon) dx \right) \\ &= \int_{\Omega} \phi_p(\nabla u) + \frac{k\pi}{p} \left| \frac{\partial v}{\partial x_3} \right|^p + \frac{2\pi\gamma}{p} |v - u|^p dx, \end{aligned}$$

which proves the result for (u, v) smooth. We complete the proof by a standard approximation of (u, v) and a diagonalization argument [1].

2.3 Proof of Proposition 2.3

It is enough to consider $\liminf_\varepsilon F_\varepsilon(u_\varepsilon) < +\infty$. Due to the compactness property, (u, v) is in $(L^p(\Omega))^2$. We first consider the term $F_\varepsilon^2(u_\varepsilon)$. Let (u_η, v_η) be Lipschitz on $\bar{\Omega}$ such that $\lim_{\eta \rightarrow 0} \|u_\eta - u\|_{L^p(\Omega)} + \|v_\eta - v\|_{L^p(\Omega)} = 0$. We define $(v_\eta - u_\eta)_\varepsilon := \sum_{i \in I_\varepsilon} (v_\eta - u_\eta)(\hat{x}_\varepsilon^i, x_3) 1_{Y_\varepsilon^i}$ and $z_{\eta\varepsilon} := (v_\eta - u_\eta)_\varepsilon \widehat{\nabla} \theta_\varepsilon$. Because of the local Lipschitz property (2.6) of ϕ_p and $(u, v) \in (L^p(\Omega))^2$, Hölder inequality implies

$$\lim_{\varepsilon \rightarrow 0} \int_{B_\varepsilon} \phi_p(z_{\eta\varepsilon}) - \phi_p(z_\varepsilon) dx = 0.$$

The proof of the upper bound equality allows us to write

$$\lim_{\varepsilon \rightarrow 0} \phi_p(z_{\eta\varepsilon}) = \frac{2\pi\gamma}{p} \int_{\Omega} |v_\eta - u_\eta|^p dx.$$

The convexity of ϕ_p and the fact that $\phi_p(\nabla u_\varepsilon) \geq \phi_p(\widehat{\nabla} u_\varepsilon)$ yield

$$\begin{aligned} \liminf_{\varepsilon \rightarrow 0} F_\varepsilon^2(u_\varepsilon) &\geq \liminf_{\varepsilon \rightarrow 0} \int_{B_\varepsilon} \phi_p(\widehat{\nabla} u_\varepsilon) dx \\ &\geq \liminf_{\varepsilon \rightarrow 0} \int_{B_\varepsilon} \phi_p(z_{\eta\varepsilon}) dx \\ &\quad + \liminf_{\varepsilon \rightarrow 0} \int_{B_\varepsilon} \phi'_p(z_{\eta\varepsilon}) \cdot (\widehat{\nabla} u_\varepsilon - z_{\eta\varepsilon}) dx. \end{aligned} \quad (2.10)$$

The very definition of ϕ_p implies

$$\begin{aligned} \phi'_p(\xi) &= |\xi|^{p-2} \xi && \forall \xi \in \mathbb{R}^n, \quad n = 1, 2, 3, \\ \phi'_p(t\xi) &= \phi'_p(t) \phi'_p(\xi) && \forall (t, \xi) \in \mathbb{R} \times \mathbb{R}^n, \quad n = 1, 2, 3, \\ \phi'_p(\xi) \cdot \xi &= p\phi_p(\xi) && \forall \xi \in \mathbb{R}^n, \quad n = 1, 2, 3. \end{aligned}$$

Hence

$$\lim_{\varepsilon \rightarrow 0} \int_{B_\varepsilon} \phi'_p(z_{\eta\varepsilon}) \cdot z_{\eta\varepsilon} dx = 2\pi\gamma \int_{\Omega} |v_\eta - u_\eta|^p dx. \quad (2.11)$$

For the other term of (2.10), we have

$$\int_{B_\varepsilon} \phi'_p(z_{\eta\varepsilon}) \cdot \widehat{\nabla} u_\varepsilon dx = \sum_{i \in I_\varepsilon} \int_0^L \phi'_p(v_\eta - u_\eta)(\hat{x}_\varepsilon^i, x_3) \int_{D^i(r_\varepsilon, R_\varepsilon)} \phi'_p(\widehat{\nabla} \theta_\varepsilon) \cdot \widehat{\nabla} u_\varepsilon d\hat{x} dx_3,$$

where $D^i(r_\varepsilon, R_\varepsilon) = D_{R_\varepsilon}^i \setminus \overline{D_{r_\varepsilon}^i}$. Let ν be the outer normal on $\partial D^i(r_\varepsilon, R_\varepsilon)$, the very definition of θ_ε as a solution of $(\mathcal{P}_\varepsilon^{\text{cap}})$ yields

$$\begin{aligned} \int_{D^i(r_\varepsilon, R_\varepsilon)} \phi'_p(\widehat{\nabla} \theta_\varepsilon) \cdot \widehat{\nabla} u_\varepsilon d\hat{x} &= \int_{\partial D^i(r_\varepsilon, R_\varepsilon)} (\phi'_p(\widehat{\nabla} \theta_\varepsilon) \cdot \nu) u_\varepsilon dl \\ &= \int_{\partial D_{R_\varepsilon}^i} (\phi'_p(\widehat{\nabla} \theta_\varepsilon) \cdot \nu) u_\varepsilon dl + \int_{\partial D_{r_\varepsilon}^i} (\phi'_p(\widehat{\nabla} \theta_\varepsilon) \cdot \nu) u_\varepsilon dl \\ &= -\tilde{u}_\varepsilon^i \int_{\partial D_{r_\varepsilon}^i} (\phi'_p(\widehat{\nabla} \theta_\varepsilon) \cdot \nu) dl + \tilde{v}_\varepsilon^i \int_{\partial D_{R_\varepsilon}^i} (\phi'_p(\widehat{\nabla} \theta_\varepsilon) \cdot \nu) u_\varepsilon dl \end{aligned}$$

where $\tilde{u}_\varepsilon^i := \frac{\int_{\partial D_{R_\varepsilon}^i} (\phi'_p(\widehat{\nabla} \theta_\varepsilon) \cdot \nu) u_\varepsilon dl}{\int_{\partial D_{r_\varepsilon}^i} (\phi'_p(\widehat{\nabla} \theta_\varepsilon) \cdot \nu) dl} = \frac{1}{2\pi R_\varepsilon} \int_{\partial D_{R_\varepsilon}^i} (\phi'_p(\widehat{\nabla} \theta_\varepsilon) \cdot \nu) u_\varepsilon dl$, $\tilde{u}_\varepsilon := \sum_{i \in I_\varepsilon} \tilde{u}_\varepsilon^i 1_{Y_\varepsilon^i}$,

$\tilde{v}_\varepsilon^i := \frac{\int_{\partial D_{r_\varepsilon}^i} (\phi'_p(\widehat{\nabla} \theta_\varepsilon) \cdot \nu) v_\varepsilon dl}{\int_{\partial D_{r_\varepsilon}^i} (\phi'_p(\widehat{\nabla} \theta_\varepsilon) \cdot \nu) dl} = \frac{1}{2\pi r_\varepsilon} \int_{\partial D_{r_\varepsilon}^i} (\phi'_p(\widehat{\nabla} \theta_\varepsilon) \cdot \nu) v_\varepsilon dl$, $\tilde{v}_\varepsilon := \sum_{i \in I_\varepsilon} \tilde{v}_\varepsilon^i 1_{Y_\varepsilon^i}$. Thus,

$$\begin{aligned} \int_{D^i(r_\varepsilon, R_\varepsilon)} \phi'_p(\widehat{\nabla} \theta_\varepsilon) \cdot \widehat{\nabla} u_\varepsilon d\hat{x} &= (\tilde{v}_\varepsilon^i - \tilde{u}_\varepsilon^i) \int_{\partial D_{r_\varepsilon}^i} (\phi'_p(\widehat{\nabla} \theta_\varepsilon) \cdot \nu) dl \\ &= (\tilde{v}_\varepsilon^i - \tilde{u}_\varepsilon^i) \int_{D^i(r_\varepsilon, R_\varepsilon)} \phi'_p(\widehat{\nabla} \theta_\varepsilon) \cdot \widehat{\nabla} \theta_\varepsilon d\hat{x} \\ &= 2\pi\Gamma_p(r_\varepsilon, R_\varepsilon) (\tilde{v}_\varepsilon^i - \tilde{u}_\varepsilon^i), \end{aligned}$$

and

$$\int_{B_\varepsilon} \phi'_p(z_{\eta\varepsilon}) \cdot \widehat{\nabla} u_\varepsilon \, dx = 2\pi\Gamma_p(r_\varepsilon, R_\varepsilon) \int_{\Omega} \phi'_p((v_\eta - u_\eta)_\varepsilon)(\tilde{v}_\varepsilon - \tilde{u}_\varepsilon) \, dx.$$

It was shown in [2] that $(\tilde{v}_\varepsilon - \tilde{u}_\varepsilon) \rightharpoonup (v - u)$ in $L^p(\Omega)$. On the other hand, $(v_\eta - u_\eta)$ being smooth and ϕ'_p being continuous from $L^p(\Omega)$ to $L^{p'}(\Omega)$, we have $\phi'_p((v_\eta - u_\eta)_\varepsilon) \rightarrow \phi'_p(v_\eta - u_\eta)$ in $L^{p'}(\Omega)$. Hence,

$$\lim_{\varepsilon \rightarrow 0} \int_{B_\varepsilon} \phi'_p(z_{\eta\varepsilon}) \cdot \widehat{\nabla} u_\varepsilon \, dx = 2\pi\gamma \int_{\Omega} \phi'_p(v_\eta - u_\eta)(v - u) \, dx. \quad (2.12)$$

Therefore, (2.10), (2.11) and (2.12) imply

$$\begin{aligned} \liminf_{\varepsilon \rightarrow 0} F_\varepsilon^2(u_\varepsilon) &\geq \frac{2\pi\gamma}{p} \int_{\Omega} |v_\eta - u_\eta|^p \, dx \\ &\quad + 2\pi\gamma \left[\int_{\Omega} |v_\eta - u_\eta|^p \, dx - \int_{\Omega} \phi'_p(v_\eta - u_\eta)(v - u) \, dx \right]. \end{aligned}$$

The expected lower bound for $F_\varepsilon^2(u_\varepsilon)$ is obtained by letting η tend to zero.

To complete the proof it suffices to use the arguments of [2] concerning the lower bounds for $F_\varepsilon^1(u_\varepsilon)$, $F_\varepsilon^3(u_\varepsilon)$ and the fact that v belongs to $L^p(\omega, W^{1,p}(0, L))$.

2.4 The Final Result

The following theorem, a convergence result for the minimizer of $(\mathcal{P}_\varepsilon)$, is a standard consequence of the previous three propositions.

Theorem 2.5 *Let the assumptions (1.3) and (1.5) hold with $(k, \gamma) \in (0, +\infty)$. Then the unique solution \bar{u}_ε of $(\mathcal{P}_\varepsilon)$ converges weakly in $W^{1,p}(\Omega)$ to the unique solution \bar{u} of the problem*

$$\min \{ \min \{ \Phi(u, v) - L(u) : v \in L^p(\Omega) \} : u \in L^p(\Omega) \},$$

where Φ and L are defined by (1.4) and (1.2) respectively.

Proof. The proof of this theorem is the same as that in [2]. ■

3 Conclusions and Remarks

The previous analysis can be easily extended to the case when ϕ_p is replaced by any strictly convex function which satisfies

$$\exists M > 0, \exists r \in (1, p); \quad |W(\xi) - \phi_p(\xi)| \leq M|\xi|^r \quad \forall \xi \in \mathbb{R}^3, \quad (3.1)$$

the density function associated with $\Phi(u, v)$ becomes

$$W(\nabla u) + 2\pi\gamma|v - u|^p + W\left(\frac{\partial v}{\partial x_3}\right).$$

Indeed, (3.1) and Hölder inequality imply

$$\left| \int_{B_\varepsilon} W(\nabla u_\varepsilon) dx - \int_{B_\varepsilon} \phi_p(\nabla u_\varepsilon) dx \right| \leq M|B_\varepsilon|^{1-\frac{r}{p}} \int_{\Omega} |\nabla u_\varepsilon|^p dx,$$

while our arguments and those of [2] to derive the upper bound and lower bound respectively are valid when ϕ_p is replaced by any convex function satisfying a growth condition like

$$\exists \alpha, \beta > 0; \quad \alpha(|\xi|^p - 1) \leq W(\xi) \leq \beta(1 + |\xi|^p) \quad \forall \xi \in \mathbb{R}^3,$$

which is an obvious consequence of (3.1).

Eventually, the key arguments of our analysis are the identification of $\gamma, \theta_\varepsilon$ in terms of the solution of capacity problems and the use of the p -positive homogeneity and convexity of ϕ_p and of the fact that $\phi_p(\xi) \geq \phi_p(\hat{\xi})$. Thus, it is easy to guess what could be $\Phi(u, v)$, when ϕ_p is replaced by any strictly convex function and when the cross sections of the fibers are smooth star-shaped domains of \mathbb{R}^2 . We hope that our proposed strategy will be able to reduce and overcome the involved technical difficulties.

4 Acknowledgement

Somsak was supported by a research fund from Commission on Higher Education and the Thailand Research Fund (MRG5080422). Nuttawat was supported by a scholarship from The Ministry Staff Development Project of the Ministry of University Affairs.

References

- [1] H. ATTOUCH, *Variational Convergence for Functions and Operators*, Pitman, 1984.
- [2] M. BELLIEUD - G. BOUCHITTÉ, *Homogenization of elliptic problems in a fiber reinforced structure. Non local effects*, Ann. Scuola Norm. Sup. Pisa Cl. Sci. XXVI(1998), 407-436.

(Received ?? ?????? ????)

Somsak Orankitjaroen, Nuttawat Sontichai, Christian Licht, Amnuay Kananthai
e-mail: scsok@mahidol.ac.th, aoon.mu@hotmail.com, licht@lmgc.univ-montp2.fr,
malamnka@science.cmu.ac.th