



HAL
open science

A decision-making tool to maximize chances of meeting project commitments

Nguyen Trong-Hung, François Marmier, Didier Gourc

► **To cite this version:**

Nguyen Trong-Hung, François Marmier, Didier Gourc. A decision-making tool to maximize chances of meeting project commitments. *International Journal of Production Economics*, 2013, 142 (2), pp.214-224. 10.1016/j.ijpe.2010.11.023 . hal-00746515

HAL Id: hal-00746515

<https://hal.science/hal-00746515>

Submitted on 14 Sep 2013

HAL is a multi-disciplinary open access archive for the deposit and dissemination of scientific research documents, whether they are published or not. The documents may come from teaching and research institutions in France or abroad, or from public or private research centers.

L'archive ouverte pluridisciplinaire **HAL**, est destinée au dépôt et à la diffusion de documents scientifiques de niveau recherche, publiés ou non, émanant des établissements d'enseignement et de recherche français ou étrangers, des laboratoires publics ou privés.

A decision-making tool to maximize chances of meeting project commitments

Trong-Hung NGUYEN, François MARMIER*, Didier GOURC
UNIVERSITE DE TOULOUSE, MINES ALBI, CENTRE GENIE INDUSTRIEL
ROUTE DE TEILLET, CAMPUS JARLARD, 81013 ALBI CEDEX 09, FRANCE

Abstract

The project management team has to respect contractual commitments, in terms of deadlines and budgets, that are often two antagonistic functions. Then, during the invitation to tender phase or when faced with a risk situation, it has to determine its risk management strategy.

Based on the principles of a synchronized process between risk management and project management, we propose a decision-making tool to help the project manager choose the best risk treatment strategy.

The methodology developed, called ProRisk, uses the concepts of risk scenario, treatment scenario and project scenario to determine the consequences of possible risks combined or not with preventive and/or corrective treatment actions.

As a finding, the project manager is also able to indicate to the sales department if the financial and deadline conditions are sufficiently profitable with regard to the risks.

Keywords: decision support, project planning, risk management, scenarios, treatment strategy.

* Corresponding author. Tel: +33 563 493 312 (F. MARMIER)
E-mail addresses: {FRANCOIS.MARMIER; DIDIER.GOURC}@MINES-ALBI.FR

1. Introduction

In the current context of market globalisation, and in order to find new clients, companies have to offer innovative products. They also have to change product ranges. More and more companies use project management tools and methods for managing their innovations, for ensuring better product quality, better deadlines and lower costs. In this context, particular attention is paid to project management methods by decision-makers and academics.

Every project type faces risks, whatever the size or topic concerned. Nevertheless, the more innovative the project, or if the technology area is poorly known, the more uncertain and risky the project. Professional organisations as well as standards bodies have for several years produced guides and books on project management and good practice (International Organization for Standardization (1997), IPMA (1999), Project Management Body of Knowledge or PMBoK, International Project Management Association Competence Baseline or ICB, etc.). These reference framework documents present the process required for management. Turner proposes a review of progress on the global project management body of knowledge (Turner 2000). He states that, even if the internal breakdowns may not be always appropriate, the guide to the PMBoK contains the core elements used by all project managers. The following dimensions are systematically mentioned in the reference framework documents: integration, scope, time, cost, quality, human resources, communication, risk and procurement management. Academic works also exist. These aim to reinforce their use (Themistocleous and Wearne 2000) and to add further details to the propositions in a range of different fields: defining and specifying notions of risk in order to reduce the polysemy of this term, they establish classifications and they propose new approaches.

In a project context, the manager has to take risks into consideration in two main situations. Firstly, when faced with a risk situation, the manager has to choose a strategy which keeps the project on budget and on time. Secondly, when the sales department answers an invitation to tender, risks have to be correctly evaluated and the strategies correctly chosen to obtain a realistic estimate (cost/duration) of the project.

This paper is interested specifically in approaches that allow projects to be managed by taking account of risks. These approaches aim to anticipate potential phenomena and to measure their possible consequences on the project life or objectives. They lead the manager to choose the risk treatment strategies appropriate to the project.

In the next part, we present a literature survey on risk management, which shows the diversity of the sectors of activity concerned. We illustrate the evaluation problematic of the influence of risk on project schedule. Then we describe our proposed methodology, “ProRisk”, and a case study is detailed. Finally, we analyse the results obtained and present our conclusions to this work.

2. The risk management approaches

The risk management area is large and concerns a huge number of activity sectors, from finance to industrial, via chemistry, nuclear technologies, health, the environment, etc. In several sectors, the need for methods has been known for a long time. Numerous approaches and methods have been developed and proposed as a result of directives and regulations

which are launched in the wake of more or less media-friendly disasters such as the Three Mile Island and Chernobyl nuclear accidents, the explosion at Bhopal, the floods at Vaison la Romaine, etc. Faced with these different disasters, populations have greater influence in their demands for more and more applications of the precaution principle. Then, to regulate the financial sector and promote corporate governance, several new regulations appear regularly, such as the Sarbanes-Oxley Act in USA or the financial security law in France.

2.1 Global approaches

In the literature, the risk management methods refer to a standard process presenting the well known steps: risk identification, risk evaluation and quantification, risk classification, proposed actions for treatment and/or impact minimization and risk monitoring (CSA 1997, BSI 2000, ISO 31000, PMI).

It would take too long to list every disaster and mention every method which has been proposed. Nevertheless, Tixier *et al.* propose a classification of 62 existing approaches (Tixier *et al.* 2002). They sort methods as being deterministic and/or probabilistic, but also qualitative or quantitative.

As an example of the deterministic and qualitative we can mention approaches that are dedicated to a particular activity, such as the HAZOP method (HAZard OPerability) for the chemical industry (Kennedy and Kirwan 1998), the HACCP method (Hazard Analysis Critical Control Point) for food chain security (Motarjemi and Käferstein 1999), or some more general ones that cover several activity sectors, such as PRA method (Preliminary Risk Analysis) (Nicolet-Monnier 1996).

For the probabilistic and quantitative approaches, there are the FTA method (Fault Tree Analysis) (Nicolet-Monnier 1996), the ETA (Event Tree Analysis) (Tiemessen and Van Zweeden 1998), the Monte Carlo method (Kalos and Whitlock 2008), or the two main approaches for project risk management: the RISKMAN method (Carter *et al.* 1996) and the PRAM method (Project Risk Analysis and Management) (Chapman and Ward 1997).

Deterministic and probabilistic and quantitative such as the FMECA (Failure Modes, Effects and Criticality Analysis) (Rogers 2000), MOSAR or ARAMIS (Accidental Risk Analyse Methodology for IndustrieS) (Salvi and Debray 2006). The latter presents the bow-tie, which can also be helpful to manage risk in projects.

Deterministic and probabilistic and qualitative, such as the SRA method (Structural Reliability Analysis) (Rogers 2000). The approaches mentioned are summarized in Table 1.

[Insert Table 1 here]

In a project context corresponding to this work, a risk may introduce different modifications into a project. Tasks may appear or disappear, others could be longer or shorter than forecast. This therefore impacts the notion of project planning. The specificities of the project context are: the notion of uniqueness (there is no recurrence in the projects), the notion of limited horizon (there are different milestones and contractual commitments), and the notion of a multi-expertise environment (numerous actors with different skills, perceptions and points of view are working together); together, these influence the choice of method. Uniqueness leads

to use methods, such as the brainstorming, that are based on the expertise (very limited returns of experience and very few databases are available). The fact that time is limited forces the use of simple methods. Finally, the high number of actors implies that the model must share the information and help obtain a consensus.

In this work, we make the link between project planning, project management and risk management. To our knowledge, few methods are able to do that. They mainly apply risk management to an object, but the repercussions on planning are rarely modelled. Among the most closely-related approaches, RISKMAN examines the notion of risk as an event that can affect the project. PRAM mixes qualitative and quantitative elements by transforming events into uncertainties impacting the tasks (Chapman and Ward 2003), and the ARAMIS method allows the notion of the scenario to be highlighted. The risk becomes one or several uncertainties that are taken into account in tasks as a cost or delay range. It is reflected in the global project by the means of delay distribution or total project cost distribution. In the following part we provide more details concerning these three methods/methodologies that are, or that can be, used in the project risk area.

The RISKMAN method was developed between 1993 and 1996 during a EUREKA project (Carter *et al.* 1996). In accordance with existing reference framework documents, the RISKMAN methodology proposes a risk management process composed of the following phases: identification, evaluation, treatment and monitoring. The RISKMAN method recommends several interesting rules:

- a risk must always belong to only one risk category. 12 risk categories are proposed. The risks relate to: strategy, marketing, contracts, finance, project schedule, definition, process (Work Breakdown Structure or WBS), organisation (Organization Breakdown Structure or OBS), maintenance, business, and to external events outside organization;
- each impact has to be measured (or evaluated) within only one unit;
- a risk can have one or more causes. A risk can increase the probability of several others to appear (risk interdependence);
- each risk with no direct financial impact must lead directly, or indirectly, to one or more risks with a financial impact.

RISKMAN also proffers the notion of risk reduction strategy. A reduction strategy takes the form of an action required to reduce, eliminate or avoid the potential impact of a project risk. The scheduling of risk reduction must be applied at each project life-cycle phase, after the process of evaluating and quantifying the risks. In accordance with RISKMAN, the project manager can attenuate risk using different action types: avoidance, transfer, reduction, etc. Lastly, RISKMAN is a generic methodology applicable to all project types.

The PRAM method (Project Risk Analysis and Management) (Chapman and Ward 1997) was developed for the Project Managers Association. PRAM is supported by risk management process (RMP). This iterative process is composed by several steps such as define, focus, identify, structure, clarify, estimate, evaluate, plan or manage. The originality of this method comes from the simultaneous identification of the risks and of their associated reduction actions during the identification phase. Authors also indicate the case where reduction actions can generate new risks; therefore they talk about secondary risks.

The ARAMIS method comes from a European research project (2002-2004). The project objective was to develop a new evaluation methodology for risk evaluation responding to the

Seveso II European Directive requirements (Kirchsteiger *et al.* 1998). It was developed to be an alternative solution to deterministic or purely probabilistic approaches to risk evaluation. This methodology proposes the study of accident scenarios and the definition of protection barriers to halt the scenarios identified. ARAMIS uses results from other pre-existing methods, which already offered such dimensions, such as the MADS-MOSAR method. The representation of the accident scenarios using the bow-tie shape is at the heart of the ARAMIS methodology and represents one of its originalities. The risk is defined as a combination between the occurrence probability (frequency) of Dangerous Phenomena (DP) and their corresponding Major Events (ME), their intensity and the vulnerability of the territory exposed. The left side of the bow-tie, the fault tree, identifies the possible causes of a critical event. The combination of Undesirable Events (UE) leads to Detailed Direct Causes (DDC) and, when combined, to Direct Causes (DC). That generates the Necessary and Sufficient Conditions (NSC) inducing the Critical Event, then linking with Secondary Critical Events (SCE), Tertiary Critical Events (TCE), and then the Dangerous Phenomena. The bow-tie concept found in ARAMIS was initially developed by Shell to represent the different steps of risk management in an installation. On this basis, the ARAMIS authors present a particular version of the bow-tie, which combines a failures tree and an events tree (Fig. 1) (Salvi and Debray 2006). Protection Barriers can, therefore, be broken down into two families: preventive barriers, which are located on the bow-tie's left side, and protection barriers which are on right (Fig. 1).

[Insert Fig. 1 here]

A possible way to move from left to right in a bow-tie, describes a scenario (cause – dreaded event - consequence). In each bow-tie, a dreaded critical event (CE) can result from several possible causes. Consequently, this tool is perfectly adapted to illustrate the result of a detailed risk analysis (such as FMECA, HAZOP).

2.2 Academic works

Several academic works propose methods to complement the different phases of the previously presented global approaches, such as optimisation of different criteria during the schedule or after the identification phase. As an example, Kiliç *et al.* propose an approach to solve a bi-objective optimisation problem where the makespan (or project duration) and the total cost have both to be minimized. Different preventive strategies are possible for each risk and a multi-objective genetic algorithm is used to generate a set of pareto optimal solutions (Kiliç *et al.* 2008).

Van de Vonder *et al.* are interested in generating robust projects by inserting buffers in the project schedule. Using heuristics, their approach aims to minimize project duration and maximize project robustness, which are antagonistic objectives. Depending on the project characteristics, this strategy can be an interesting way to increase solution stability (Van de Vonder *et al.* 2005).

In parallel to the previously presented global approaches, several authors propose methodologies to manage the risk in projects. Gourc *et al.* propose a reading grid of the risk management approaches following two families (Gourc 2006): the symptomatic approach and the analytic approach. The first approach group, called risk-uncertainty, is associated with

approaches where project risk management is transformed into project uncertainty management (Ward and Chapman 2003). This approach is supported by different software tools such as @Risk®, Pertmaster®, Crystal Ball®, etc. These software solutions use the Monte Carlo simulation method (Kalos and Whitlock 1970) to assess the duration, cost, etc., of a project in relation to the uncertainties. The second approach family considers risk as an event that can affect achievement of the project objectives (Carter *et al.* 1996). According to ISO/IEC Guide 73, “Risk can be defined as the combination of the probability of an event and its consequences” (ISO 2002). Software tools such as Riskman, RiskProject®, etc. continue this type of approach. The risk is described as an event, which has occurrence characteristics (potentiality to occur) and consequence characteristics on the project objectives (impact in the event of occurrence).

As observed in this literature review, little account is taken of risk and the strategies to deal with it regarding their repercussions on planning. The ability to present the project manager with a range of alternative risk treatments when faced with a risk situation, and the further ability to provide information on the consequences on decision criteria such as project cost and duration should improve the decision making process.

3. Risks consideration in project schedules

In this work, we propose to make the link between project management and risk management by analysing the consequences of a risk “as an event” (refer to the second approach family in section 2.2) in the project. This work is also complemented with the integration of risk treatment strategies that can be often translated as new project planning tasks. This leads the project manager to use a synchronised process between risk management and the project schedule process.

3.1 Limited analysis of the existing approaches

Project management and risk management processes are generally presented as independent. Each process is described with precision but the interrelations, which may exist, are never shown. This hypothesis is overly simplistic and leads to improper decisions. Pingaud and Gourc (Pingaud and Gourc 2003) propose a project management approach based on a synchronised process of project schedule and risk management, presented in Fig. 2.

[Insert Fig. 2 about here]

This synchronized process illustrates:

- the initial scheduling influence of a project on the identification and evaluation of the project risks (steps (5) and (6) in Fig. 2);
- the influence of planned treatment actions to reduce the risk on a project schedule. The aims of the treatment actions are to either reduce the probability (from an *initial* probability to a *reduced* probability) and/or the impact (from an *initial* impact to a *reduced* impact). In this case, the authors refer to schedule with risk to indicate that the schedule takes into account the presence of risk in the project completion date evaluation and in the starting and completion date of each task (steps (9), (9’) and (9’’) in Fig. 2).

On the basis of these works, we propose here a tool designed to help managers to choose the strategy suited to the risks and contractual conditions.

This tool is mainly usable in two situations. First, faced with a known risk, it guides the project manager in the choice of a strategy that allows both budget and contractual deadline commitments to be respected. Secondly, when the sales department responds to an invitation to tender, the project manager can indicate if the proposed financial conditions and the defined deadline allow the different risks to be correctly integrated into the projected profitability and its realizability.

Therefore, the objectives of the proposed model are to:

- determine the impacts of the identified risks on the schedule (total execution duration, total cost, etc.). The traditional approach sorts risks separately in order to determine which risk is the most critical. The proposed approach allows determination of which risk sub-set (or scenario) is the most critical;
- determine the impacts of the treatment actions on the schedule (modification of the total duration, margin of each schedule task, reduction of the cost induced by unwanted events, modification of risk occurrence probabilities, etc.);
- help choose the best treatment strategy.

3.2 Illustration of the risks consideration in project scheduling

To illustrate the problematic, we propose a simple example comprising 3 tasks (T_1 , T_2 and T_3) from a project initial schedule. 3 risks (R_1 , R_2 and R_3) have been identified. The initial impact of each risk is illustrated in Fig. 3. Our objective is to correctly evaluate the influence of risk occurrences and to recommend treatment actions. Then we analyse each situation, (b) and (c) (Fig. 3) respectively, relative to the occurrence of risks R_1 and R_2 . We notice a difference in the project completion date. Moreover, in this example the project cost increases by 200 MU (Monetary Units) in (b) and 100 MU in (c). However, what about the situation where R_1 , R_2 and R_3 all occur?

Most risk management approaches studied separate each risk. Fan *et al.* propose a framework to choose a risk-handling strategy by looking at the project characteristics. The model provides a tool to understand the consequences and the financial implications of their decisions. For a given risk, their model takes into account delays and costs generated by the risk occurrence and occurrence probabilities through risk level (Fan *et al.* 2008). The objective is to decrease this level of risk but to be realistic about deadline and cost realities, the global impact of one or several risks is different from the total of each individual one. Therefore, situations (d) and (e) illustrate the occurrence impact of R_1 and R_2 or R_2 and R_3 on the project deadline and, respectively, an increase of 300 MU and 150 MU. Situation (f) shows that in an additive way the effect of the occurrence of R_1 and R_3 modify the critical path and the total cost increases by 350 MU. Traditional approaches do not integrate the type of additive combination-only event that affects how tasks on the critical path would be evaluated.

[insert Fig. 3 about here]

Risk treatment actions can also have knock-on impacts on the schedule structure and the cost of the project. In such cases, treatment action implementation takes the form of:

- modifications in the WBS (Work Breakdown Structure). A treatment action can, for example, generate new tasks to achieve;

- modification of the tasks scheduling, since the precedence relation may be altered;
- extra costs due to new tasks. These can be a fixed cost or a proportional cost caused by the extended duration of pre-existing tasks.

Two treatment action types can be identified: preventive actions and corrective actions. Preventive actions aim to reduce the occurrence probability and/or the impact gravity by the mean of protection measures. These actions are notable for being undertaken before the risk occurrence. Therefore, they can be realized even if the phenomenon doesn't occur. Corrective activities are performed to answer to the event occurrence. They reduce the impact importance.

Our objective is to propose a complete framework, taking account of all disturbances generated by a risk. It should permit evaluation of its consequences on project management, particularly on the deadline dimension. In addition, this environment will be useful for managers, in order to measure the project global risk level, by taking into account the different possible scenarios, as well as helping to choose the most suitable risk strategies.

4. Proposed model

Taking decisions in the choice of a risk treatment strategy for a project is a multicriteria problem. However when the project manager has to take the decision, the number of criteria used to measure the impact of the proposal is most often reduced to the main ones: the probability of the scenario, the cost, which is a sensitive and finite resource, and the delay, which is traditional a matter of contractual commitment.

4.1 Hypothesis

The proposed model is based on 2 main hypothesis. First, the risk integration to the project management is done regarding the deadlines and the cost criteria. The considered impacts (modification or suppression of an existing task or the insertion a new task for example) influence on the project total duration and cost. The resource aspects such as availability or skill are not considered for the moment in the model.

Another hypothesis used for this model is that, at the beginning of the project, the tasks list and the risks list are known and do not vary during the project. Every characteristic relative to the risks are known since an approach such as the Delphi method has been previously applied (Dalkey and Helmer 1963). This method helps risks manager characterizing the risk dimension (impact and probability). It uses different anonymous questionnaires for eliciting experts' opinion to reach a consensus. The risk assessment step can require gathering a huge number of data. This work hasn't for objective to develop a tool making easier the data-gathering that may be costly in time and effort with a realistic number of tasks.

When new risks are identified and quantified during the project, these can be integrated into the risk scenarios calculation, allowing the approach to retain a large degree of reactivity and realism. The uncertainties are not managed in this work. Therefore, it is possible to apply the model at the project by starting to analyse the project global risk level, the possible scenarios and the selection of the best treatment strategies. Later, during the project, the same questions can be solved by a risk scenario analysis of risks already run on the completed tasks.

4.2 Data

A project is described by its tasks T_t ($t=1\dots T$), T being the number of project tasks. The planning process gives an initial planning P_i that doesn't integrate any risks. A project is also described by its set E_R of identified risks R_i ($i=0\dots n$), n being the number identified risks. Each R_i is characterised via the risks management process. It has a probability and an impact. The initial impact allows consideration of the fact that the task is running in a graceful degradation. A risk R_i is also characterized by its period of occurrence, i.e. the tasks during which the risk can occur.

A *risk scenario* ScR_s corresponds to a combination of the risks that are considered as occurring. A project presenting n risks leads to 2^n risks scenarios. Then ScR_s ($s=1\dots 2^n$) is a possible achievement with k risks ($0 \leq k \leq n$) and the total number of risk scenarios, presenting k of the n identified risks, is equal to $\frac{n!}{k!(n-k)!}$.

Each risk can be treated in various ways that can be preventive, corrective or a combination of several actions. A risk R_i can be associated to one or more treatment strategies StT_{ij} ($j=1\dots m$), m being the number of identified strategies for R_i . A treatment strategy StT_{ij} groups a set of treatment actions $A_{ij\alpha}$ ($\alpha=1\dots a$) to avoid or reduce the risk R_i , a being the number of identified treatment actions. A treatment action can be materialized by a task to achieve and it can introduce 3 types of modification to the WBS:

- addition of a new task, which generates a new action to realize;
- suppression of a task from the initial schedule. The risk is reduced by suppressing a task from the schedule;
- modification of an existing task that can be resumed by the suppression of a task and the addition of another one.

A treatment strategy is a preventive strategy if it contains at least a preventive treatment action. Otherwise, it is a corrective strategy. If the strategy consists in running no action at all, it is noted as being an empty set such as \emptyset .

Finally, for each risk R_i several treatment strategies are possible. The definition of these strategies can lead to the appearance of treatment actions common to several risks. The set of all the identified StT_{ij} for a risk R_i is written StR_i .

Then $StR_i = \{\emptyset, StT_{i1}, \dots, StT_{ij}, \dots, StT_{im}\}$ and $Card(StR_i) = m + 1$

A *treatment scenario* ScT_d ($d=1\dots D$) corresponds to a combination of the treatment strategies chosen to deal with the different risks of a project. The set of treatment scenarios is given by:

$$E_{ScT} = \prod_{i=1}^n StR_i$$

The probability and the impacts (delay and cost) are qualified of *initial* before the development of the risk management approach. They are qualified of *reduced* if they are modified after the achievement of the treatment actions.

Then, a *project scenario* ScP_p ($p=1\dots P$) is defined as being a possible project achievement that is built with a risk scenario and treatment scenario ($ScP_p = \langle Pi, ScR_s, ScT_d \rangle$). The set of project scenarios ES is obtained by combining the set of occurring risks (or a risk scenario) and the set of determined treatment actions (or treatment scenario).

4.3 Proposed new resolution approach: ProRisk

To evaluate the different possible project scenarios, the management team need to generate an initial schedule, without integrating the notions of risk and treatment. It then needs to calculate the different risk and treatment scenarios. These scenarios allow the set of the project scenarios to be constructed. Finally, when the project scenarios are known it is possible to obtain their durations and their costs. Therefore, the proposed method uses data from the schedule process (management team) and from the risk management process; as presented in Fig. 4, ProRisk contains six modules:

- Initial schedule generation.

The initial schedule generation allows the project schedule to be created by considering the whole project tasks, their precedence links and initial duration. The duration obtained is the total project duration that corresponds to the schedule, without taking into account the risks.

- Risk scenarios generation.

The module is the list of the different risks. The objective of the risk scenarios generation is to generate all possible risk sub-sets.

- Treatment scenarios generation.

The different possible treatment strategies and the actions they contain to deal with each risk and their effects are introduced in this module. Treatment scenario generation consists in determining all possible treatment scenarios.

- Project scenarios construction.

This module takes the different risks and project scenarios to generate the whole project scenario.

The first iteration of the project scenario construction function lists possible scenarios with only one risk (R_1 for example).

$$ES_1 = \begin{cases} \{\emptyset; R_1; (R_1, StT_{11})\} & \text{if } StT_{11} \text{ is corrective} \\ \{\emptyset; R_1; (_, StT_{11}); (R_1, StT_{11})\} & \text{if } StT_{11} \text{ is preventive} \end{cases}$$

The notation $(_, StT_{11})$ indicates the fact that the treatment strategy (preventive) is done and avoids the achievement of risk R_1 .

The second iteration allows constructing a scenario by adding a second risk (R_2 for example).

For example, if StT_{11} and StT_{21} are corrective strategies respectively for risks R_1 and R_2 , then:

$$ES_2 = \left\{ \begin{array}{l} \emptyset; R_1; (R_1, StT_{11}); R_2; R_1 R_2; (R_1, StT_{11}) R_2; \\ (R_2, StT_{21}); R_1 (R_2, StT_{21}); (R_1, StT_{11}) (R_2, StT_{21}) \end{array} \right\}$$

...

Finally, we obtain the possible scenario total set by considering all the possible risks combinations.

$$ES_n = \{ScP_i\} = \{\emptyset; R_1; (R_1, StT_{11}); R_2; R_1R_2; (R_1, StT_{11})R_2; \dots\}$$

However, some obtained scenarios can present the following inconsistency:

For 2 different existing risks R_x and R_y , belonging to a same ScR_w ($R_x \in ScR_w$ and $R_y \in ScR_w$).

ScT_z presents two treatment strategies StT_{xk} and StT_{yl} containing respectively the following treatment actions A_{xkl} and A_{yll} . With:

$$\begin{aligned} A_{xkl}: & \text{suppressed } T_2 \\ A_{yll}: & \text{replaced } T_2 \text{ by } T_5 \end{aligned}$$

All project scenario ScP presenting a treatment scenario including both actions A_{xkl} and A_{yll} is inconsistent and is eliminated.

- Probability calculation of each project scenario.

The probability calculation method for each project scenario differs due to the fact that the project scenarios contain, or do not contain, a treatment strategy. It is not an objective of this module to determine whether a risk exists or not, or to evaluate its characteristics. However, during a project, using data relative to newly identified and quantified risks, the proposed approach permits progressive completion/modification of the set of project scenarios using the newly acquired knowledge.

If the scenario does not contain any treatment strategy, the calculation is applied on the initial occurrence probabilities of the risks comprising the risk scenario.

$$proba(< ScR_s; \emptyset >) = \prod_{i=1}^n \begin{cases} proba(R_i) & \text{if } (R_i \in ScR) \\ 1 - proba(R_i) & \text{if } (R_i \notin ScR) \end{cases}$$

With $proba(R_i)$ the probability that the event related to R_i occurs. This probability is also called *initial probability*.

If ScP contains a ScT , four possible situations allow the probability to be determined.

$$proba(< ScR_s; ScT_d >) = \prod_{i,j}^{R_i \in E_p, StT_{ij} \in ScT_d} \begin{cases} proba(R_i) & (1) \\ 1 - proba(R_i) & (2) \\ proba(R_i | StT_{ij}) & (3) \\ 1 - proba(R_i | StT_{ij}) & (4) \end{cases}$$

Where $proba(R_i | StT_{ij})$ is the probability that the event related to R_i occurs knowing that StT_{ij} has been done. This probability is called *reduced probability*. Then, for each risk it uses either reduced probabilities, where the risk treatment strategy is preventive, or the initial probability where the strategy is corrective.

$$(1) \text{ if } (R_i \in ScR_s) \text{ and } \left(\left(\text{without } StT_{ij} \right) \text{ or } \left(proba(R_i) = proba(R_i | StT_{ij}) \right) \right)$$

In this first case, the event relative to R_i occurs and there is no strategy launched, or the strategy doesn't change the probability but only the impacts.

(2) if $(R_i \notin ScR_s)$ and $\left(\left(\text{without } StT_{ij}\right) \text{ or } \left(\text{proba}(R_i) = \text{proba}(R_i | StT_{ij})\right)\right)$

Either R_i is not occurring or a preventive strategy that does not modify the probability has been used.

(3) if $(R_i \in ScR_s)$ and $(StT_{ij}$ is preventive) and $\left(\text{proba}(R_i) \neq \text{proba}(R_i | StT_{ij})\right)$

In this ScP, R_i is occurring. It is influenced by the preventive strategy and the initial probability of R_i is modified.

(4) if $(R_i \notin ScR_s)$ and $(StT_{ij}$ is preventive) and $\left(\text{proba}(R_i) \neq \text{proba}(R_i | StT_{ij})\right)$

A preventive strategy has been processed and the initial probability has been modified. Finally R_i is not occurring.

- Duration and cost calculation of each project scenario.

For each project scenario, the duration and the cost are calculated by taking into account potential modifications induced at the schedule level by the achievement of treatment strategies. The PERT method is used to calculate the project scenario duration. After having adapted the initial schedule in accordance with the studied scenario (modified duration, tasks added or removed), the project scenario duration is computed by taking into account the earliest starting dates.

The cost of a project scenario without taking into account risks $C_R^-(ScP_p)$ is obtained by the only cost of the T tasks that constitute the initial project planning.

$$\text{With } \forall p, C_R^-(ScP_p) = \sum_{t=1}^T C(T_t)$$

The initial cost of a project scenario $ScP_p = \langle Pi, ScR_s, \emptyset \rangle$ is determined as being:

$$C_R^{initial}(ScP_p) = C_R^-(ScP_p) + \sum_{R_i \in ScR_s} GC^{initial}(R_i), \forall p \in \{1 \dots P\}$$

Where $GC_i^{initial}$ corresponds to the Global Cost of R_i induced by the cost impact CI_i of R_i that is the fixed part of the total cost (materials, tools, parts, etc.) and by an indirect cost that depends on the action duration, through the Delay Impact DI_i , and on the actors through the rate V_i of the resource in charge of task t .

$$GC^{initial}(R_i) = \sum_{i=1}^n CI_i^{direct} + \sum_{i=1}^n CI_i^{indirect}$$

$$\text{with } CI_i^{indirect} = \sum_{t=1}^T (DI_i \times V_t) \text{ and } V_t = \frac{C(T_t)}{\text{Initial_duration}(T_t)}$$

Finally, the cost of a project scenario including a treatment scenario $ScP_p = \langle Pi, ScR_s, ScT_d \rangle$ is determined as followed:

$$C(ScP_p) = C_{\bar{R}}(ScP_p) + \sum_{R_i \in ScR_s} GC^{reduit}(R_i) + \sum_{R_i \in ScR_s} \sum_{StT_{ij} \in StR_i} C(StT_{ij}), \forall p \in \{1 \dots P\}$$

With the reduced global cost impact ($GC^{reduit}(R_i)$) that is obtained taking into account the different strategies StT_{ij} applied to treat R_i and its reduced repercussions on CI_i and DI_i .

$$GC^{reduit}(R_i) = \sum_{i=1}^n CI_i^{direct_reduced} + \sum_{i=1}^n CI_i^{indirect_reduced}$$

The cost of a treatment strategy StT_{ij} is determined by:

$$C(StT_{ij}) = \sum_{\alpha=1}^a C(A_{ij\alpha}), \forall i \in \{1 \dots n\}, \forall j \in \{1 \dots m\}$$

Where the cost of the action is composed by a direct cost $C_{ij\alpha}^{direct}$ that is the fixed part of the total cost (materials, tools, etc.) and by an indirect cost $C_{ij\alpha}^{indirect}$ that depends on the action duration and on the actors.

$$C(A_{ij\alpha}) = C_{ij\alpha}^{direct} + C_{ij\alpha}^{indirect}, \forall i \in \{1 \dots n\}, \forall j \in \{1 \dots m\}, \forall \alpha \in \{1 \dots a\}$$

[insert Fig. 4 about here]

This methodology and tool are flexible. That makes possible to obtain statistics before the project launching, as well as during the project lifecycle, by taking into account the current date and the state of the different risks and tasks.

5. Case study

To validate our proposals, we take as an example a condensed case, extracted from a study that we carried out previously. This study examines the case of a building project for a weather-forecasting station. Different actors from different sectors take part in the project. The different data have been collected from the different project participants, particularly the project manager. At the end of the case study, results are discussed with the project manager and the solutions deduced using ProRisk are compared in the light of their effectiveness.

5.1 Presentation

The project comprises 3 main phases, each comprising 6 tasks (T_1 to T_6), presented in Fig. 5.

[insert Fig. 5 about here]

3 risks are identified by the risk management process (R_1 to R_3). Therefore, in this project, E_{ScR} (the set of the risk scenario) contains 2^3 risk scenarios:

$$E_{ScR} = \{\{\emptyset\}, \{R_1\}, \{R_2\}, \{R_3\}, \{R_1, R_2\}, \{R_1, R_3\}, \{R_2, R_3\}, \{R_1, R_2, R_3\}\}$$

Each risk is characterised by a probability, a period of occurrence, an initial impact (cost and duration) and associated treatment strategies (i.e. Table 22).

[insert Table 2 about here]

Each treatment strategy, as detailed in Table 3, presents a duration, an insertion location in the logical network or a task to be modified, a cost, a reduced probability and reduced impact (reduced cost and reduced duration) of the treated risk.

[insert Table 33 about here]

5.2 Results

The first results obtained, presented in Table 4, are the project scenarios without any treatment strategies. Scenarios can be sorted by occurrence probabilities, deadlines, costs, or criticality criterion, combining the cost and deadline dimensions. In Table 4, scenarios are sorted by their criticality in descending order.

[insert Table 4 about here]

Table 5 presents the results obtained by running the different project scenarios. All the combinations of risk scenario and treatment scenario are tried and then, each project scenario is different from the others. In Table 5, scenarios are sorted by their criticality.

[insert Table 5 about here]

The scenario durations in Table 4 and Table 5 are presented by time unit (TU) and achievement cost in monetary unit (MU).

To choose the appropriate treatment strategy, which is a multi-criteria decision problem (duration and cost), an aggregated criterion representing a global impact is proposed. In order to make the criteria comparable we introduce, for each project scenario, α and β respectively represent the duration and the cost metrics:

$$\alpha = \frac{d}{\max(d)} \quad \text{and} \quad \beta = \frac{c}{\max(c)}$$

Then, $\alpha, \beta \in [0, 1]$

Where d is the duration of a given project and c its cost, $\max(d)$ is the duration of the longest project scenario and respectively $\max(c)$ the cost of the most expensive project scenario. Then, the global impact is obtained using the following formulae:

$$impact = p \times \alpha + q \times \beta$$

Where p and q are two coefficients that are chosen by the project manager in accordance with the importance criterion. In this study, we considered the weight of each criterion (cost and duration) as equivalent for the calculation of the criticality. Then $p=q=0.5$. However, project

manager preferences can be different and lead to variation in criticality and therefore to a different risk scenario hierarchy.

Criticality (Cr) is then obtained as follows, using the global impact of the scenario and its probability (P):

$$Cr = P \times impact$$

5.3 Analysis

5.3.1 General observations

Through Table 4, it can be seen that the most probable risk scenario, which is the scenario presenting at least one outcome risk, is the one containing R_3 : $\{R_3\}$. Logically, scenarios containing R_2 ($P(R_2)=0,1$) are the least probable. Globally, through Table 4, the cheapest solution corresponds to the project scenario in which no risk occurs: $\{\emptyset\}$. This solution is also the quickest with the one presenting $\{R_1\}$ that may occur during a task which is not located on the critical path. The most expensive scenario is the one presenting $\{R_1, R_2, R_3\}$ and therefore these consequences lead to the longest scenario. Because of the very low probability, even if 3 risks occur, the scenario where $\{R_1, R_2, R_3\}$ occurs is not the most critical one. But it is also not the least probable, which is the one containing (R_1 and R_2).

Preventive treatment strategies aim to decrease the risk criticality by acting on the risks probability and/or their impacts. If we consider possible treatment scenario, Table 5 presents the modifications generated by these strategies on the probabilities, on the impacts or on the criticality. Then, Table 55 presents a different classification from Table 4.

In the proposed case study, if we consider a risk scenario $\{R_2\}$, it is possible to apply StT_{21} . StT_{21} modifies the R_2 impacts. In fact, R_2 has no impact on deadlines, only on costs. StT_{21} leads to reductions in R_2 cost impact, but involves an additional duration. This shows that strategies require attention because they can lead to modifications in the project duration.

But project manager want to be sure that they will be able to lead the project by meeting the budget and the stated deadline. One means is to avoid risks using preventive strategies. This leads managers to ask the question: “which strategy to choose if we want to maximize the probability of the scenario where no risk occurs?” In the case study, if we want to maximize this probability, the strategy StT_{33} should be adopted. Without any strategy, the probability that no risk occurs is $P(\{\emptyset\})=0.288$, and with StT_{33} the probability becomes $P(\{_, StT_{33}\})=0.677$. This is explained by the fact that $P(\{R_3\})$ is decreased from 0.432 to $P(\{R_3, StT_{33}\})=0.043$. This risk scenario ($\{R_3\}$) is also the most critical risk scenario, StT_{33} allows a decrease in criticality in case of R_3 occurring.

5.3.2 About taking decisions

For project managers there are two situations can require analysis and where such support would be helpful. First, if the manager is in the project conception phase, s/he has to provide target costs and deadlines. Knowing the different risks, s/he has to estimate the chances of success, as well as of meeting the budget and the contractual commitments. Fig. 6 presents the different risk scenarios with the project duration in x-coordinate and its cost in y-coordinate.

The probability of the scenario is represented by the bubble diameter. Therefore, an acceptability zone can be defined Fig. 6, using the budget and deadline thresholds.

[insert Fig. 6 about here]

Fig. 6 makes it possible to see and understand the problematic relating to the different risk scenarios presented in Table 4. The risk scenarios $\{R_1\}$ and $\{R_2\}$ stay within the required budget and deadline. However $\{R_3\}$, or the risk scenarios combining R_3 and R_1 and/or R_2 , exceed the acceptability zone presented in Fig. 6. Moreover, $\{R_3\}$ presents a high probability level compared to other risk scenarios. Therefore, the project manager will concentrate her/his efforts, and suggest risk treatment strategies, for R_3 .

Secondly, if the project manager considers (or faces) a particular risk scenario, s/he has to analyse the improvements obtained with the different possible strategies. S/he then has to choose the most appropriate treatment scenario for a given risk scenario. The question is, for any given risk scenario, which risk strategy is the most appropriate?

In the case study presented here, three strategies are possible for the risk scenario $\{R_3\}$. Fig. 7 presents the possible treatment strategies. However, if R_3 occurs, only $\{StT_{31}\}$ and $\{StT_{32}\}$ will meet the budgetary and contractual requirements. As risk scenario $\{R_3\}$ presents a relatively high probability level, it may be sensible to apply one of these two strategies. The results obtained and the choices suggested were compared and discussed according to the project actors' perceptions. The treatment strategy proposed by ProRisk does indeed correspond to that which the decision maker would have selected and applied.

[insert Fig. 7 about here]

Then, the project manager is able to deduce whether the project is profitable, taking into account the associated probability. One possible conclusion is that the negotiation conditions are not acceptable because the probability of being in the acceptability zone at the end of the project is too low. Therefore, s/he can indicate to the sales department that the contract conditions have to be reviewed.

Finally, it is also possible to observe that risk scenarios combining several risks such as $\{R_1, R_3\}$ for example, are more critical and also more probable than some risk scenarios presenting only one risk. This example validates the relevance of studying the scenario, contrary to the traditional approach that considers risks on a separate basis.

6. Conclusion and Perspectives

To estimate the risk level for each project, in this paper we propose an approach that makes it possible to model and evaluate the impact of risks on the project cost and the schedule cost. This approach uses the synchronized processes principle. Then, we defined the concepts of risk scenario, treatment scenario and project scenario. The principles of the proposed ProRisk method have been illustrated in a case study.

The ProRisk methodology is well suited to promote and favour exchanges between project scheduling teams and risk management teams. It can be used from the project conception phases to assist with project launch decision. It allows an estimate to be made of the global

risk level and gives a vision of the possible scenarios: from the least to the most probable, from the most disastrous to the most optimistic!

It is also usable during the project life-cycle, to estimate a project scenario that may occur knowing the risks that have already occurred. Moreover, we show that in several situations the traditional risk hierarchies, obtained through traditional approaches, lead to hierarchisations that are not relevant. The fact is that considering risk scenarios instead of single risks gives results that are closer to the reality. A software tool has been developed (java platform), it implements the functionalities described in this paper.

During a project, risk sources can be the cause of other risks (Carter *et al.* 1996) and the risk impacts can change the environment for other risks. However, we observe that all the different project risk analysis methods study risks under the hypothesis of independence between risks. These risk behaviours are individually easier to identify and easier to generate. However, in reality interdependencies exist between risks. These interdependencies can be strong enough to change the parameters of certain risks, such as the probability and/or the impact if one or more risks occur simultaneously. Even if in some cases a risk may be another risk factor (Carr and Tah 2001), it also has to be used to calculate other risk parameters. As a result, the risk impact evaluation can be influenced by these interdependencies. The influence mechanisms are currently implemented. The main perspective for this work will be to examine the influence of previously-occurring risks on the probability scenarios. It consists in using a model to take account of the interdependency mechanisms, or influences between risks. Therefore, different rules can be imagined based on the occurrence/ non-occurrence of risks that may have an impact on other risks characteristics, but that also may involve the occurrence/ non-occurrence of others risks.

7. References

- British Standards Institution, 2000. BS 6079-3: Project Management: Guide to the management of business related project related.
- Canadian Standard Association, 1997. CAN/CSA-Q850: Risk Management, Guideline for Decision Makers.
- Carr, V. and Tah, J.H.M., 2001. A fuzzy approach to construction project risk assessment and analysis: construction project risk management system. *Advances in Engineering Software*, 32(10-11), 847-857.
- Carter, B., Hancock, T., Morin, J. and Robin, N., 1996. *Introducing RISKMAN: the European project risk management methodology*, The Stationery Office.
- Chapman, C.B. and Ward, S.C., 1997. *Project risk management: processes, techniques, and insights*, John Wiley and Sons.
- Dalkey, N. and Helmer, O., 1963. An Experimental Application of the Delphi Method to the Use of Experts, *Management Science*, 9(3), 458-467.
- Fan, M., Lin, N. and Sheu, C., 2008. Choosing a project risk-handling strategy: An analytical model. *International Journal of Production Economics*, 112(2), 700-713.

- Gourc, D., 2006. Towards a general risk model for piloting goods- and service-related activities (Vers un modèle général du risqué pour le pilotage et la conduite des activités de biens et de services). HDR de l'Institut National Polytechnique de Toulouse, France.
- International Organization for Standardization, 1997. ISO 10006, Quality Management. Guidelines to Quality in Project Management.
- International Organization for Standardization, 2009. ISO 31000, Risk management -- Principles and guidelines.
- International Organization for Standardization, 2002. ISO Guide 73, Risk management -- Vocabulary -- Guidelines for use in standards.
- International Project Management Association, 1999. IPMA Competence Baseline. <http://www.ipma.ch>.
- Kalos, M.H. and Whitlock, P.A., 2008. Monte Carlo methods, Wiley-VCH.
- Kalos, M.H. and Whitlock, P.A., 1970. Monte Carlo Methods. Computers and Their Role in the Physical Sciences.
- Kennedy R., Kirwan B., 1998. Development of a Hazard and Operability-based method for identifying safety management vulnerabilities in high risk systems. *Safety Science*, 30(3), 249-274.
- Kiliç, M., Ulusoy, G. and Serifoglu, F.S., 2008. A bi-objective genetic algorithm approach to risk mitigation in project scheduling. *International Journal of Production Economics*, 112(1), 202-216.
- Kirchsteiger, C., Christou, M. and Papadakis, G., 1998. Risk Assessment & Risk Management in the Context of the Seveso II Directive, Elsevier, The Netherlands.
- Motarjemi, Y. and Käferstein, F., 1999. Food safety, Hazard Analysis and Critical Control Point and the increase in foodborne diseases: a paradox? *Food Control*, 10(4-5), 325–333.
- Nicolet-Monnier, M., 1996. Integrated regional risk assessment: The situation in Switzerland. *International Journal of Environment and Pollution*, 6(4-6), 440–461.
- Pingaud, H. and Gourc, D., 2003. Approach of controlling an industrial project by the risk analysis (Démarche de pilotage d'un projet industriel par l'analyse des risques). 5e Congrès International Franco-Québécois de Génie Industriel, Canada.
- Rogers, R.L., 2000. The RASE Project risk assessment of unit operations and equipment, <http://www.safetynet.de/EC-Project>, pp1-50.
- Salvi, O. and Debray, B., 2006. A global view on ARAMIS, a risk assessment methodology for industries in the framework of the SEVESO II directive. *Journal of Hazardous Materials*, 130(3), 187-199.

- Themistocleous, G. and Wearne, S.H., 2000. Project management topic coverage in journals. *International Journal of Project Management*, 18(1), 7-11.
- Tiemessen, G. and Van Zweeden, J.P., 1998. Risk assessment of the transport of hazardous materials. In *Proceeding from ninth international symposium loss prevention and safety promotion in the process industries*. pp. 299–307.
- Tixier J., Dusserre G., Salvi O. and Gaston D., 2002. Review of 62 risk analysis methodologies of industrial plants, *Journal of Loss Prevention in the Process Industries*, 15(4), 291-303.
- Turner, J.R., 2000. The global body of knowledge, and its coverage by the referees and members of the international editorial board of this journal. *International Journal of Project Management*, 18(1), 1-5.
- Van de Vonder, S., Demeulemeester, E., Herroelen, W. and Leus, R., 2005. The use of buffers in project management: The trade-off between stability and makespan. *International Journal of Production Economics*, 97(2), 227-240.
- Ward, S. and Chapman, C., 2003. Transforming project risk management into project uncertainty management. *International Journal of Project Management*, 21(2), 97-105.

Figures

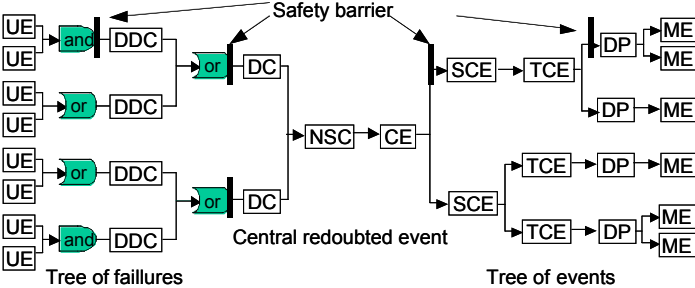


Fig. 1. Sample Bow-Tie

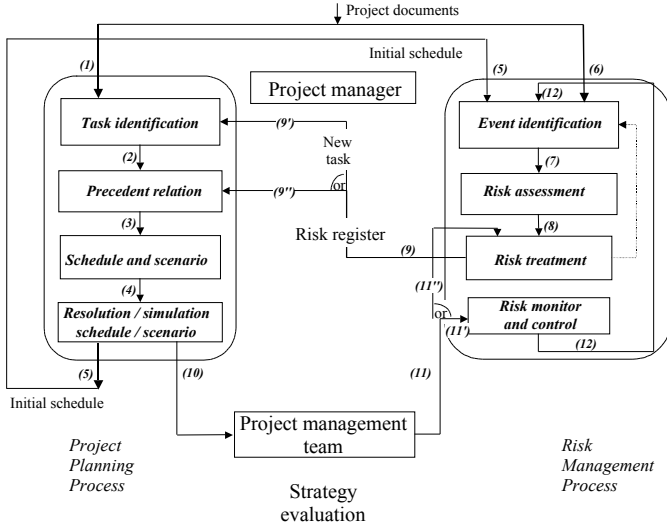


Fig. 2. Synchronization Process Model of Risk Management Process and Project Schedule Process

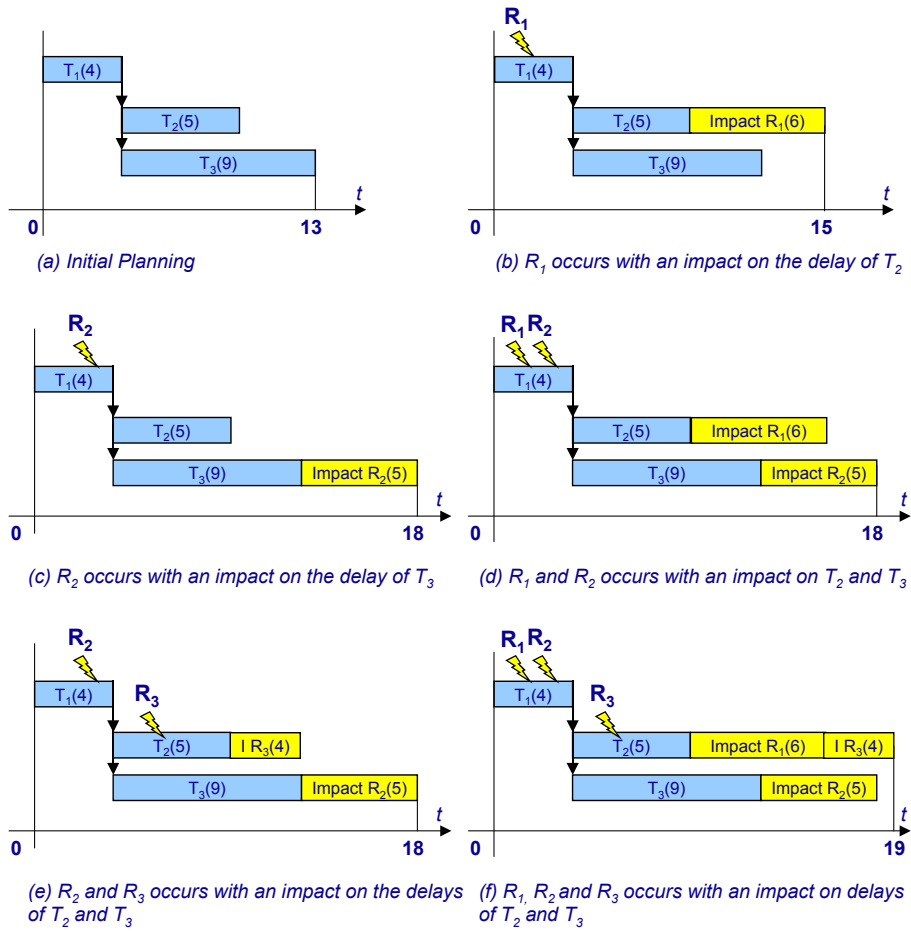


Fig. 3. The Global Impact Notion

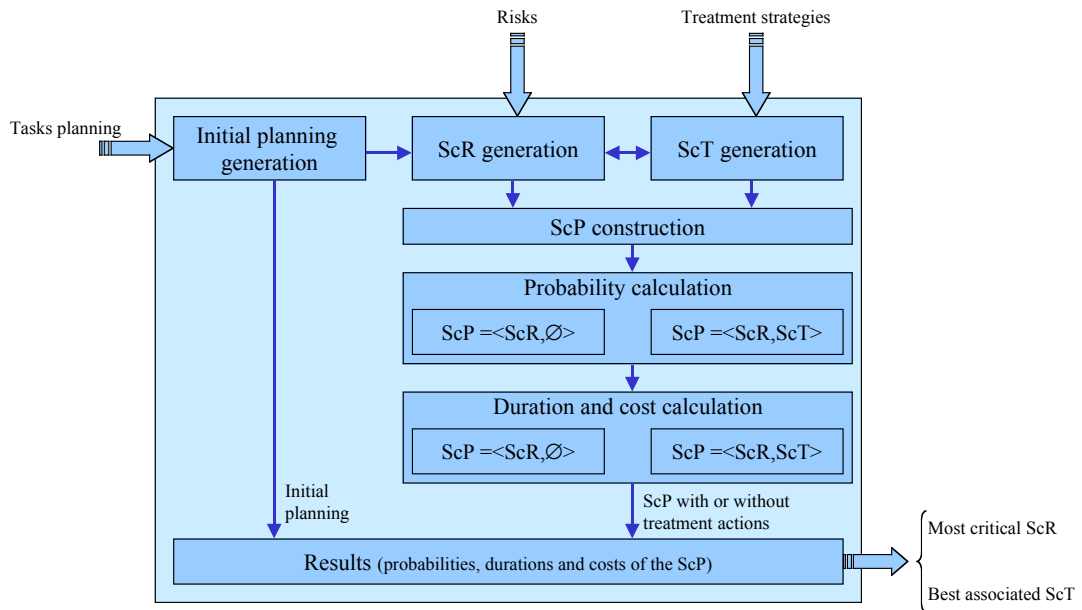


Fig. 4. ProRisk Main Modules

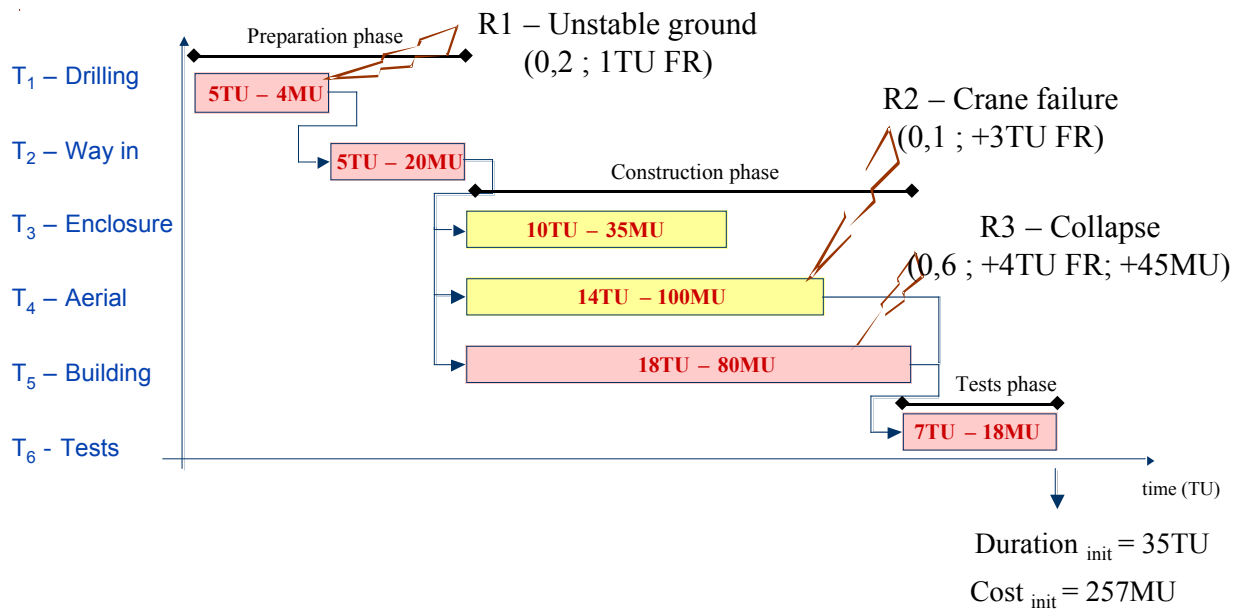


Fig. 5. Project Initial Schedule

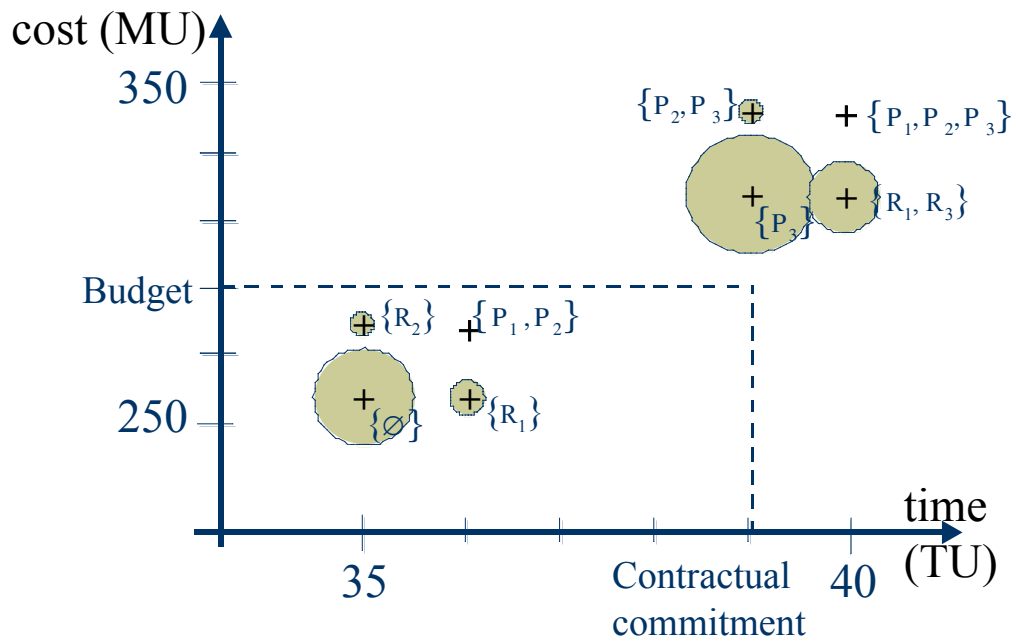


Fig. 6. Risk Scenario Positioning Relative to the Budget and Contractual Commitment

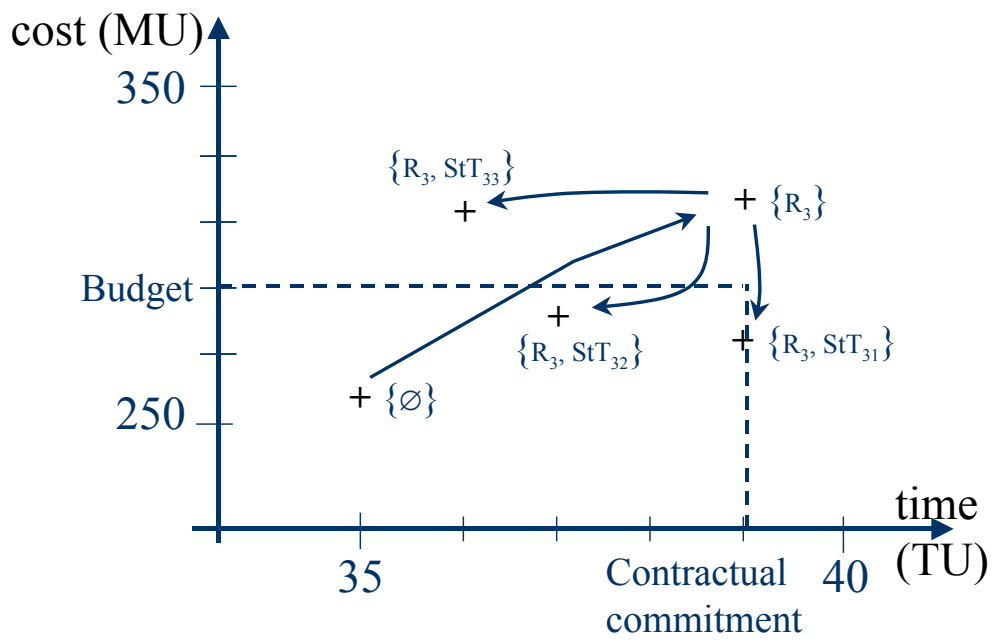


Fig. 7. Choice of the Most Suitable Treatment Strategy

Tables

Table 1 Summary of the approaches mentioned

Approach	Deterministic	Probabilistic	Qualitative	Quantitative
HAZOP	X		X	
HACCP	X		X	
PRA	X		X	
FTA		X		X
ETA		X		X
Monte Carlo		X		X
RiskMan		X		X
PRAM		X		X
FMECA	X	X		X
MOSAR	X	X		X
ARAMIS	X	X		X
SRA	X	X	X	

Table 2 Possible Risks and their Characteristics

Risk	Probability	Period	Initial schedule impact	Initial cost impact	StT
R ₁	20%	T ₁	Add 1 TU to T ₁ with a fixed rate		∅
R ₂	10%	T ₄	Add 3 TU to T ₄ with a fixed rate		StT ₂₁
R ₃	60%	T ₅	Add 4 TU to T ₅ with a fixed rate	Fixed cost of 45 MU	StT ₃₁ StT ₃₂ StT ₃₃

Table 3 Treatment Strategies (p: preventive, c: corrective)

StT-Actions	Type	Predecessors or modified task	Successors	Duration	Cost	Reduced probability	Reduced impact	Reduced cost
StT ₂₁ (c)	Adding	T ₄ until R ₂	Remaining part of T ₄	0,1TU	8 MU	-	0 TU for T ₃	-
StT ₃₁ (p)	Adding	T ₂	T ₅	2TU	15MU	10%	2 TU for T ₅	15 MU
StT ₃₂ (p)	Modification	T ₂	/	+1TU	+23MU	5%	1 TU for T ₅	10MU
StT ₃₃ (p)	Modification	T ₅	/	-	+58MU	2%	1 TU for T ₅	5MU

Table 4 ScPs without Treatment Strategy

Criticality	Risks	Probability	Impact	Duration (TU)	Cost (MU)
0.33	R3	0.432	0,77	39	320
0.09	R1, R3	0.108	0,87	40	321
0.04	R2, R3	0.048	0,90	39	341
0.012	R1, R2, R3	0.012	1,00	40	342
0.008	R1	0.072	0,10	36	258
0.004	R2	0.032	0,13	35	278
0.002	R1, R2	0.008	0,23	36	279
0.000		0.288	0,00	35	257

Table 5 ScPs with Treatment Strategy

Criticality	(Risks, Strategies)	Probability	Impact	Duration (TU)	Cost (MU)
0.332	(R3,,)	0,432	0,769	39	320
0.299	(.,StT33)	0,677	0,441	36	315
0.166	(.,StT31)	0,576	0,288	37	272
0.144	(.,StT32)	0,612	0,235	36	280
0.094	(R1,,) (R3,,)	0,108	0,874	40	321
0.0924	(R1,,) (.,StT33)	0,169	0,546	37	316
0.07783	(R3,StT31)	0,144	0,541	39	281
0.0566	(R1,,) (.,StT31)	0,144	0,393	38	273
0.0520	(R1,,) (.,StT32)	0,153	0,340	37	281
0.043	(R2,,) (R3,,)	0,048	0,895	39	341
0.04265	(R2,,) (.,StT33)	0,075	0,567	36	336
0.03918	(R2,StT21) (R3,,)	0,048	0,816	39	328
0.03903	(R3,StT32)	0,108	0,361	37	284
0.03671	(R2,StT21) (.,StT33)	0,075	0,488	36	323
0.027	(R2,,) (.,StT31)	0,064	0,414	37	293
0.02457	(R2,,) (.,StT32)	0,068	0,361	36	301
0.0232	(R1,,) (R3,StT31)	0,036	0,645	40	282
0.02146	(R2,StT21) (.,StT31)	0,064	0,335	37	280
0.0192	(R2,StT21) (.,StT32)	0,068	0,282	36	288
0.0191	(R3,StT33)	0,043	0,441	36	315
0.013	(R1,,) (R2,,) (.,StT33)	0,019	0,672	37	337
0.01259	(R1,,) (R3,StT32)	0,027	0,466	38	285
0.012	(R1,,) (R2,,) (R3,,)	0,012	1,000	40	342
0.01115	(R1,,) (R2,StT21) (.,StT33)	0,019	0,593	37	324
0.011	(R1,,) (R2,StT21) (R3,,)	0,012	0,921	40	329
0.0107	(R2,,) (R3,StT31)	0,016	0,667	39	302
0.00940	(R2,StT21) (R3,StT31)	0,016	0,588	39	289
0.00830	(R1,,) (R2,,) (.,StT31)	0,016	0,519	38	294
0.00792	(R1,,) (R2,,) (.,StT32)	0,017	0,466	37	302
0.00754	(R1,,)	0,072	0,105	36	258
0.00704	(R1,,) (R2,StT21) (.,StT31)	0,016	0,440	38	281
0.007	(R1,,) (R2,StT21) (.,StT32)	0,017	0,387	37	289
0.00590	(R1,,) (R3,StT33)	0,011	0,546	37	316
0.0058	(R2,,) (R3,StT32)	0,012	0,487	37	306
0.005	(R2,StT21) (R3,StT32)	0,012	0,408	37	292
0.00403	(R2,,)	0,032	0,126	35	278
0.00309	(R1,,) (R2,,) (R3,StT31)	0,004	0,771	40	303
0.00277	(R1,,) (R2,StT21) (R3,StT31)	0,004	0,692	40	290
0.00272	(R2,,) (R3,StT33)	0,005	0,567	36	336
0.00234	(R2,StT21) (R3,StT33)	0,005	0,488	36	323
0.00185	(R1,,) (R2,,)	0,008	0,231	36	279
0.00178	(R1,,) (R2,,) (R3,StT32)	0,003	0,592	38	307
0.00154	(R1,,) (R2,StT21) (R3,StT32)	0,003	0,513	38	293
0.00151	(R2,StT21)	0,032	0,047	35	265
0.00121	(R1,,) (R2,StT21)	0,008	0,152	36	266
0.001	(R1,,) (R2,,) (R3,StT33)	0,001	0,672	37	337
0.00071	(R1,,) (R2,StT21) (R3,StT33)	0,001	0,593	37	324
0.0000		0,288	0,000	35	257