



HAL
open science

Wa-LiD: A new LiDAR simulator for waters

H. Abdallah, N. Baghdadi, Jean-Stéphane Bailly, Y. Pastol, F. Fabre

► **To cite this version:**

H. Abdallah, N. Baghdadi, Jean-Stéphane Bailly, Y. Pastol, F. Fabre. Wa-LiD: A new LiDAR simulator for waters. *IEEE Geoscience and Remote Sensing Letters*, 2012, 9 (4), p. 744 - p. 748. 10.1109/LGRS.2011.2180506 . hal-00736576

HAL Id: hal-00736576

<https://hal.science/hal-00736576>

Submitted on 28 Sep 2012

HAL is a multi-disciplinary open access archive for the deposit and dissemination of scientific research documents, whether they are published or not. The documents may come from teaching and research institutions in France or abroad, or from public or private research centers.

L'archive ouverte pluridisciplinaire **HAL**, est destinée au dépôt et à la diffusion de documents scientifiques de niveau recherche, publiés ou non, émanant des établissements d'enseignement et de recherche français ou étrangers, des laboratoires publics ou privés.

Wa-LiD: A new LiDAR simulator for waters

Hani Abdallah¹, Nicolas Baghdadi¹, Jean-Stéphane Bailly², Yves Pastol³, Frédéric Fabre⁴

¹ CEMAGREF, UMR TETIS, 500 rue François Breton, 34093 Montpellier Cedex 5, France.

² AgroParisTech, UMR TETIS, 500 rue François Breton, 34093 Montpellier Cedex 5, France.

³ SHOM, CS 92803, 29228 Brest Cedex 2, France

⁴ EADS – Astrium, 31 rue des cosmonautes, 31402 Toulouse Cedex 4, France

Email : hani.abdallah@teledetection.fr

Phone: +33 467548719, Fax: +33 467548700

A simulator (Wa-LiD) was developed to simulate the reflection of LiDAR waveforms from water across visible wavelengths. The specific features of the simulator include (i) a geometrical representation of the water surface properties, (ii) the use of laws of radiative transfer in water adjusted for wavelength and the water's physical properties, and (iii) modelling of detection noise and signal level due to solar radiation. A set of simulated waveforms was compared with observed LiDAR waveforms acquired by the HawkEye airborne and GLAS satellite systems in the near-infra red or green wavelengths and across inland or coastal waters. Signal-to-noise ratio (SNR) distributions for the water surface and bottom waveform peaks are compared with simulated and observed waveforms. For both systems (GLAS and HawkEye), Wa-LiD simulated SNR conform to the observed SNR distributions.

Index Terms— Waveform model, altimetry, bathymetry, SNR, GLAS, ICESat, HawkEye

I. INTRODUCTION

Water surface altimetry and bathymetry are key variables for many applications in hydrology, geomorphology and meteorology (e.g., [1], [2]). Several techniques for measuring water altimetry and bathymetry have been developed through the use of sonar, radar and optical imaging. Each of these techniques has drawbacks when used on inland or coastal waters [3], including (i) limited spatial coverage and use on navigable rivers (sonar), (ii) a large radar footprint when used for inland water, especially rivers and (iii) the lack of the use of optical imaging in unclear waters.

Airborne hydrographic LiDAR has proved to be a suitable sensor because of its accuracy and high spatial density features [4]. The potential for airborne hydrographic LiDAR is that it can be used for both altimetry and bathymetry because of the ability of LiDAR detectors to register returned signals from (i) the water surface for altimetry [5], (ii) the water bottom for bathymetry ([6], [7]), and (iii) the water column that allows some optical properties of water to be deduced [8]. The Airborne Hydrographic LiDAR technique is limited in terms of spatial coverage and because the data is expensive to gather.

ICESat has been the only altimeter LiDAR satellite up to now. The Geoscience Laser Altimeter System (GLAS) from ICESat provides accurate high resolution elevations for altimetry. The GLAS is promising for inland areas with widths greater than 1.5 km, even though the footprint is small (50 to 90 m), because of the time needed for detector gain adaptation when transitioning from land to water (0.25 s, approximately 1.5 km). The transition phase from land to water limits the use of GLAS in small, inland water areas [9].

To improve the perspective and the performance analysis in satellite LiDAR systems designed for water altimetry and bathymetry, a LiDAR signal database representative of the possible physical conditions of water using different LiDAR configurations is needed. The common procedure to obtain a

database involves the development of a physical model simulating the signals. Such a model would allow the reproduction of the LiDAR signal regardless of the water and instrumental parameters.

Most hydrographic applications that use LiDAR signals are derived from the work of Guenther [5]. Before now, few studies have been published that model LiDAR waveforms on water; these studies include (i) the simulation model of Mclean [10], which generates LiDAR returned waveforms from a wind-roughened ocean, (ii) the work of Feigels [6] on the optimisation of airborne LiDAR's parameters through modelling and analysing waveforms and (iii) work on modelling sea surface return and laser bathymetry from airborne LiDAR [7].

The objective of this study is to develop a new waveform simulation model available for any laser wavelength in the optical spectrum domain from 300 (Ultra Violet, UV) to 1500 nm (Near Infra Red, NIR). This model is similar to other Hydrographic LiDAR models (e.g., [5], [6], [7]) except it integrates radiative transfer laws governed by the physical properties of water for any wavelength. This simulation model uses a geometrical representation of the water surface with the geometric model of Cook and Torrance [11] and integrates both the characteristics of detection noise and signal level due to solar radiation.

The aim of this paper is (i) to present the water LiDAR waveform model (Wa-LiD) formulae regardless of LiDAR system parameters and water parameters, (ii) to exhibit a selection of simulated waveforms for certain wavelengths and the same water characteristics and (iii) to compare simulated waveforms to observed LiDAR waveforms from the satellite GLAS sensor and the airborne HawkEye sensor.

II. LIDAR MODELLING

A. The Water LiDAR (Wa-LiD) Simulation Model

1) Model description

The Wa-LiD model is able to simulate waveforms for any laser wavelength in the optical spectrum domain from 300 to 1500 nm regardless of the optical properties of water. These optical properties are determined by the attenuation (absorption + scattering) of optical light by pure water, yellow substances, phytoplankton and sediment (e.g., [12], [13]). In addition, this Wa-LiD model (i) takes into account any Bragg-scattering from the water surface using the geometric (facets) model of Cook and Torrance [11] and (ii) integrates the effects of detector noise and noise due to solar radiation.

The waveforms received by the LiDAR system (power as a function of time) are written as the sum of the echoes of multiple waves [7]:

$$P_T(t) = P_s(t) + P_c(t) + P_b(t) + P_{bg}(t) + P_N(t) \quad (1)$$

Where $P_T(t)$ is the total power received, $P_s(t)$ is the power returned by the water surface, $P_c(t)$ is the power returned by the water column, $P_b(t)$ is the power returned by the bottom, $P_{bg}(t)$ is the background power returned by the air column, $P_N(t)$ is the detector noise power and t is the time scale.

The emitted laser pulse from the LiDAR system is considered to be a Gaussian distribution [14]:

$$w(t_x) = \frac{2}{T_0} \sqrt{\frac{\ln 2}{\pi}} \exp\left(-4 \ln 2 \frac{(t-t_x)^2}{T_0^2}\right) \quad (2)$$

Where t_x is the two-way time delay of the emitted Gaussian pulse between the detector and the water surface t_s , water column t_c or bottom t_b . The returned waveforms from the water surface, water column and bottom correspond to the convolution of the Gaussian emitted pulse and the instant echoes from the water surface P_s , water column P_c and bottom P_b .

Returned waveform from water surface:

The returned waveform from the water surface received by the LiDAR detector $P_s(t)$ is given by: $P_s(t) = w(t_s) * P_s$, with:

$$P_s = \frac{P_e T_{atm}^2 A_R \eta_e \eta_R L_S \cos^2(\theta)}{\pi H^2} \quad (3)$$

P_e is the emitted power by laser = E_0/T_0 , E_0 is the emitted energy of the LiDAR system, T_0 is the Gaussian FWHM (Full Width at Half Maximum), T_{atm}^2 is the two way atmospheric loss, A_R is the receiver area, η_e and η_R are the optical efficiencies of emission and reception, L_S is the loss of transmission through the surface (surface albedo), θ is the

local incidence angle, H is the sensor altitude, $t_s = \frac{2H}{c \cos(\theta)}$,

and c is the velocity of light in air.

The loss factor through the surface L_S is calculated by the BRDF (Bidirectional Reflectance Distribution Function) of the water surface represented by specular microfacets using the geometric model of Cook and Torrance:

$$L_S = \frac{k_d}{\pi} + \frac{k_s DOF_r}{\pi \cos^2 \theta} \quad (4)$$

k_d and k_s ($k_d = 1 - k_s$) determine the fraction of diffuse and specular components, respectively. D is the microfacet distribution function that models the surface as geometric facets and is described by the distribution function of Beckmann [15].

$$D = \frac{1}{r^2 \cos^4 \theta} e^{-(\tan \theta / r)^2} \quad (5)$$

r is the *rms* (root mean square) slope of the facets, which determines the surface roughness. Small values of r signify gentle facet slopes and give a distribution that is highly directional around the specular component while large values of r imply steep facet slopes and give a distribution that is spread out [11].

O is the geometric attenuation factor of the BRDF that takes into account the phenomenon of masking between facets (auto-shadowing). F_r is the function that describes the Fresnel reflection of light on each microfacet.

Returned waveform from water column

The returned waveform from the water column $P_c(t)$ at a depth z is given by: $P_c(t) = w(t_c) * P_c(z)$, with:

$$P_c(z) = \frac{P_e T_{atm}^2 A_R \eta_e \eta_R F (1 - L_s)^2 \beta(\varphi) \exp\left(\frac{2kz}{\cos \theta_w}\right)}{\left(\frac{n_w H + z}{\cos \theta}\right)^2} \quad (6)$$

θ_w is the local incidence angle in the water, F is a loss factor due to the field of view of the telescope, n_w is the water refractive index, $\beta(\varphi)$ is the volume scattering function, z is the column layer, $t_c = t_s + \frac{2z}{c_w \cos \theta_w}$ with c_w as the velocity of

light in water, and k is the diffuse attenuation coefficient and is defined by the degradation rate of light with depth. An approximate formula was built by Guenther [5] to present the relationship between k and the optical properties of water:

$$k = c(\lambda) [0.19(1 - \omega_0)]^{\frac{\omega_0}{2}} \quad (7)$$

Where $\omega_0 = b(\lambda)/c(\lambda)$ is the single scattering albedo, $b(\lambda)$ is the scattering coefficient, $c(\lambda) = a(\lambda) + b(\lambda)$ is the attenuation coefficient and $a(\lambda)$ is the absorption coefficient.

The optical properties ($a(\lambda), b(\lambda)$) of turbid water are then expressed as the sum of contribution from different substances in water, such as yellow substances, phytoplankton and sediment [13], where:

$$a(\lambda) = a_w(\lambda) + a_y(\lambda) + a_{ph}(\lambda) + a_s(\lambda) \quad (8)$$

$$b(\lambda) = b_w(\lambda) + b_{ph}(\lambda) + b_s(\lambda) \quad (9)$$

Where w, y, ph and S are the indices of pure water, yellow substances, phytoplankton and sediments, respectively.

Returned waveform from water bottom

The returned waveform from the water bottom received by the LiDAR detector $P_b(t)$ is defined as: $P_b(t) = w(t_b) * P_b$, with:

$$P_b = \frac{P_e T_{atm}^2 A_R \eta_e \eta_R F (1 - L_s)^2 R_b \exp\left(\frac{2kz}{\cos \theta_w}\right)}{\pi \left(\frac{n_w H + z}{\cos \theta}\right)^2} \quad (10)$$

Where Z is the bathymetry, R_b is the bottom albedo (or bottom reflectance) and $t_b = t_s + \frac{2Z}{c_w \cos \theta_w}$

Signal level due to solar radiation

The signal level due to solar radiation is defined as a Gaussian white noise with a mean of zero and a standard deviation equal to 1 convolved by the instant echo, P_{bg} :

$$P_{bg} = I_s A_R T_{atm}^2 (1 - \gamma_r^2) \frac{\pi \theta^2}{4} \Delta_\lambda \eta_R \quad (11)$$

Where I_s is the solar radiance reflected from the water column, Δ_λ is the bandwidth of the optical filter in the receiver and γ_r is the receiver obscuration ratio.

Receiver internal noise

The detector internal noise is defined as a normal distribution with a zero mean and a standard deviation $\sigma_N(t)$ that varies according to the signal level:

$$\sigma_N(t) = \frac{\sqrt{2eB(P_{ext}(t)G + I_d)}}{R_\lambda} \quad (12)$$

Where $P_{ext}(t) = P_{bg}(t) + P_s(t) + P_c(t) + P_b(t)$, e is the electron charge (1.6×10^{-19} C), B is electrical bandwidth of the detector, G is the excess noise factor and R_λ is the responsivity.

Wa-LiD formulae presented above are programmed using a MATLAB code.

2) Wa-LiD simulation examples

Figure 1 shows simulated waveforms in the case of a satellite LiDAR sensor at an altitude of 500 km, emitting NIR (1064 nm), green (532 nm), and UV (350 nm) wavelengths. Water characteristics used in this simulation correspond to river water conditions with an average turbidity (average concentration of yellow substances $a_{y0} = 0.86 \text{ m}^{-1}$, phytoplankton $C_{ph} = 4 \text{ mg/m}^3$ and sediment $S = 2.8 \text{ mg/l}$) and a 2 m depth. The NIR signal has the highest amplitude from the surface and penetrates a few cm into the water column. The green signal penetrates deeper into the water column and, depending on the water properties, is reflected from the bottom. The UV wavelength penetrates considerably through the water column and can reach the bottom, but the response is very low.

III. COMPARISON OF SIMULATED TO OBSERVED WAVEFORMS

Simulated waveforms are compared with observed LiDAR waveforms to identify the Wa-LiD model behaviour. The available observed data were provided from the satellite GLAS sensor and the airborne HawkEye sensor (© SHOM).

A. Observed waveforms Datasets

Two datasets were available. The first dataset contains waveforms acquired by the Geosciences Laser Altimeter System (GLAS) across the Lake Lemman located in Switzerland and France (Lat. $46^\circ 26' \text{N}$ and Long. $6^\circ 33' \text{E}$, Figure 2a). Lake Lemman is one of the largest lakes in Western Europe with a surface area of 582 km^2 . The maximum length and width of the lake are 73 km and 14 km, respectively. The

relatively flat surfaces and the fact that the lake is not affected by tides make this a good location for validation studies. The GLAS data used in this study are GLA01. The GLA01 data include waveforms echoed from the water surface in NIR (1064 nm). Each waveform was sampled in 544 or 1000 bins of received power in volts at a sampling rate of 1 ns over land area [16]. In this study, two GLAS transects (set of successive shots or footprints) were selected. Waveforms from these two transects do not have saturation problems and are longer than other transects. The first transect was taken on March 4th 2005 with a length of 11.5 km and corresponds to 69 shots; the second transect was taken on June 7th 2006 with a length of 10.5 km and a corresponding 61 shots.

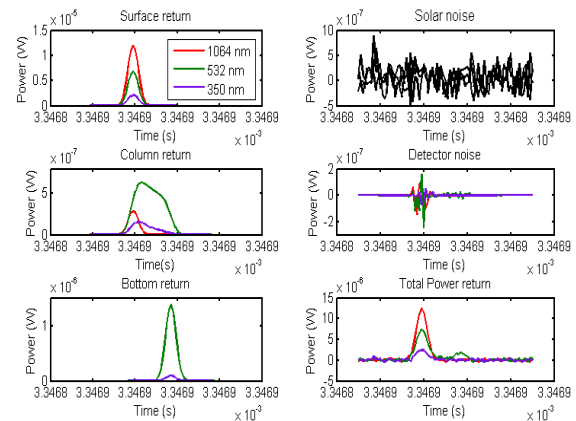


Fig. 1. Simulated LiDAR Waveforms in NIR (1064 nm), green (532 nm), and UV (350 nm). $E_0=20 \text{ mJ}$, $T_0=5 \text{ ns}$, $\theta=0.3^\circ$. Water is of average turbidity ($a_{y0}=0.86 \text{ m}^{-1}$, $C_{ph}=4 \text{ mg/m}^3$, $S=2.8 \text{ mg/l}$) with a depth of 2 m.

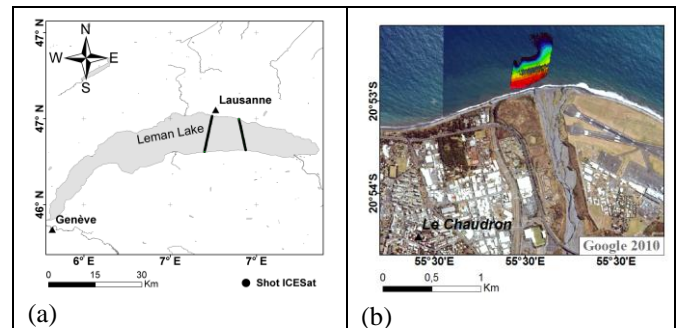


Fig. 2. (a) GLAS transects over Lemman Lake, (b) HawkEye points across a coastal area in the northern part of Reunion Island.

The second dataset contains waveforms registered by the airborne HawkEye system across a coastal area in the northern part of Reunion Island near le Chaudron (Lat. $20^\circ 52' \text{S}$ and Long. $55^\circ 30' \text{E}$, Figure 2b). The HawkEye LiDAR consists of two laser scanners, one green (532 nm) and one infrared (1064 nm) [17]. The infrared laser light is reflected at the water surface whereas the green laser light continues into the water column. The green laser light is reflected at the seabed, and a portion of the reflected light is collected by the receiver.

Table 1 shows the characteristics of the two LiDAR systems, GLAS [16] and HawkEye [7].

B. Simulated waveforms datasets

Table 2 shows the range of water parameters used for these simulations. A range of probable values of water parameters is

used for the simulation because the exact water properties were not precisely known at the time of the survey; in some cases, it was impossible to measure some of the properties, such as water surface roughness. The range of roughness, r , values used are from Beckman and Spizzochino [15]. The range of sediment concentration for coastal areas varies from 2.6 for clear water to 200 mg/l for very turbid water [18]. Here, we used a smaller range (2.6–10 mg/l) corresponding to clear water. In the same way, as sand in this area is black and formed as a result of volcanic activity [19], the selected range of values for bottom reflectance (Table 2) is the same used by Jun et al. [20].

TABLE 1
 THE GLAS AND HAWKEYE SYSTEMS PARAMETERS USED IN SIMULATIONS

Parameters	GLAS	HawkEye	Parameters	GLAS	HawkEye
λ (nm)	1064	532-1064	η_e	0.8	0.9
H	600 km	200 m	η_R	0.5	0.5
E_0 (mJ)	75	3	F	1	1
T_0 (ns)	5	7	Δ_s (nm)	1.2	1
θ (°)	0,3	20	γ_r	0.1	0.35
A_R (m ²)	0,8	0,025	B (MHZ)	100	142
FOV (mrad)	5	30	G	3	3
R_s (A/W)	0.25	0.3	Id (A)	10^{-10}	10^{-8}

TABLE 2
 RANGE OF ENVIRONMENTAL PARAMETERS USED IN SIMULATIONS

Parameters	Range	Parameters	GLAS	HawkEye
r	[0.1–0.5]	T_{atm}^2	0.64	0.9
S (mg/l)	[2.6–10]	$\beta(\varphi)$ (m ⁻¹ sr ⁻¹)	0.0014	0.0014
R_b	[0.05–0.2]	I_s (w/m ² srnm)	0.025	0.025
k_s	0.9	n_w	1.33	1.33

C. Waveforms comparison

The amplitude of GLAS waveforms is in volts whereas the units for HawkEye are not known because of industrial trade secrets. For the Wa-LiD simulations, the waveforms are expressed in watts. For these reasons as well as the invariant shapes of waveforms and the fact that peaks in waveforms are the main information retrieved, the chosen method to compare simulated and observed waveforms was to compare the signal-to-noise ratio (SNR). Here, SNR is defined by the ratio between the waveform peak amplitude (water surface, bottom) and the standard deviation of detection noise (includes also the photon noise of the useful signal). The distributions of SNR for simulated and observed waveforms were computed. The 95%, 90%, 75% and 50% confidence intervals were thus calculated from SNR quantiles for both observed waveforms (GLAS and HawkEye) and simulated ones. Next, the probabilities for an observed SNR to belong to a given simulated SNR confidence interval were computed. The number of simulated waveforms chosen was around two times higher than the number of observed waveforms to ensure a better simulation of extremes.

D. Results and discussion

1) Comparison with GLAS waveforms

Waveforms were simulated from Wa-LiD using the GLAS system parameters (Table 1) and the range of values for roughness r (Table 2). In the infrared, the waveforms are

influenced mainly by the water surface roughness because the penetration of this wavelength is very low in the water column and the LiDAR return comes primarily from the water surface. In all, 260 waveforms were generated by random, and water surface properties were uniformly selected within the ranges given in Table 2. From the two GLAS transects selected, 130 GLAS waveforms across Lemna Lake were used. Next, GLAS and simulated SNR distributions were computed and assigned confidence intervals. The probability of a GLAS SNR (SNR_{GLAS}) value belonging to the simulated SNR (SNR_{valid}) confidence intervals is higher (Figure 3a) (approximately 0.99 at a 95% confidence interval) than the opposite (Figure 3b) (approximately 0.57 at a 95% confidence interval). In the Wa-LiD model, the water surface albedo (L_s) is influenced by two water surface properties: the specular reflection coefficient and the surface roughness. The underestimation of the simulated SNR is probably due to the distribution of unknown water properties compared with simulations from distributions of uniform water properties.

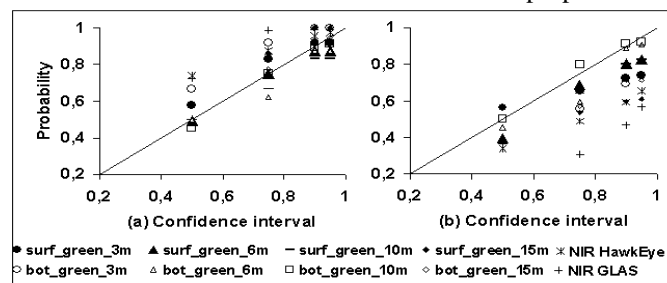


Fig. 3. a) Probability for an observed SNR to belong to a simulated SNR interval, b) Probability for a simulated SNR to belong to an observed SNR interval.

2) Comparison with HawkEye waveforms NIR channel

In all, 400 waveforms were simulated from Wa-LiD using the HawkEye system characteristics (Table 1) and a wide range of values for water surface roughness (Table 2). They were compared to 200 observed HawkEye waveforms. The probability of HawkEye SNR (SNR_{Hawk}) belonging to SNR_{valid} confidence intervals are higher (approximately 0.98 at a 95% confidence interval) than the opposite (approximately 0.66 at a 95% confidence interval) (Figure 3). The weak underestimation of simulated SNR may result for the same reason as the underestimation for GLAS (i.e., unknown values of properties for actual surface water distribution), which may demonstrate the limitations of this comparison exercise. This result confirms the capability of the Wa-LiD model to simulate realistic LiDAR waveforms in the NIR.

Green channel

The simulated waveforms in the green were carried out using the same system parameters as those for the infrared, except for the wavelength value (532 nm). The water parameters (Table 2) were randomly selected as inputs for the simulator. The water surface roughness r has a higher impact on the surface echo, and the sediment concentration S has the higher impact on the water column echo for coastal areas [18].

In contrast, the bottom reflectance R_b has the higher impact on the bottom echo. The remaining water parameters were fixed for values that belong to clear coastal water ($a_{y0}=0.1 \text{ m}^{-1}$, $C_{ph}=1 \text{ mg/m}^3$). The comparison between HawkEye and simulated waveforms were carried out for 4 water depths: 3, 6, 10, and 15 m. For each depth, 400 simulations were generated. For comparison, 94 HawkEye waveforms were used: 21 at 3 m, 20 at 6 m, 20 at 10 m, and 18 at 15 m depths.

HawkEye and simulated data were compared using the SNR for both the surface and bottom returns. The same confidence intervals were calculated for each considered bathymetry. Figure 4 presents the boxplots of SNR for surface and bottom returns from simulated and HawkEye green waveforms at a 3 m depth. There is a high probability (higher than 0.8) that the HawkEye surface SNR (SNR_{Hawk}) belong to the simulated surface SNR 95% confidence interval for all water depths (Figure 3a). These probabilities were higher than those of a simulated surface SNR to belong to the HawkEye surface SNR confidence intervals. At the bottom, the probability of HawkEye SNR (SNR_{Hawk}) to belong to the simulated bottom SNR confidence intervals were slightly higher than the opposite (Figure 3). This weak underestimation of simulated SNR (surface and bottom) is thought to be a result of the unknown actual distribution of 95% at the surface (k_s , r), the column (S) and the bottom (R_b), which does not fully match the distribution of uniform water properties for the simulation.

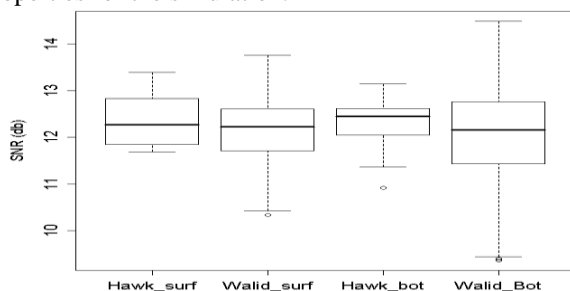


Fig. 4. Box plots of SNR_{Hawk} (surface and bottom) and $\text{SNR}_{\text{walid}}$ (surface and bottom) for HawkEye waveforms in the Green channel at depth of 3 m.

IV. CONCLUSION

A simulation model was built in order to simulate LiDAR waveforms on waters for any emitted wavelength in the optical domain and for different systems characteristics and water properties. The behaviour of the simulator was new explored using datasets of observed waveforms collected from the GLAS satellite sensor over Lemn Lake in the NIR channel and from the HawkEye airborne sensor in a coastal area across the northern part of Reunion Island in the NIR and the green channels. The observed and simulated waveforms were analysed by comparing the SNR distribution of their peaks and their confidence intervals, for surface and bottom peaks. The confidence intervals for both observed and simulated SNR are sufficient while presenting some bias, most likely because of the distribution of unknown water properties.

In future works, experiments and research are necessary for a proper characterisation of water surface roughness. Moreover, an analysis of the model sensitivity to different media characteristics and sensor parameters will be carried out to analyse the influential parameters and to assess the performance of future LiDAR systems for the water surface altimetry and bathymetry especially for what concerns the optimisation of the ground processing algorithms.

ACKNOWLEDGMENT

The authors would like to thank the NSIDC (National Snow and Ice Data Centre) and the SHOM (Service Hydrographique et Océanographique de la Marine) for providing GLAS and HawkEye data respectively. The authors are very grateful to EADS (European Aeronautic Defence and Space Company) and CNES (Centre National d'Etudes Spatiales), which both supported this study.

REFERENCES

- [1] J. K. Willis, Fu. Lee-Lueng, E. Lindstrom, and M. Srinivasan, "17 years and counting: Satellite altimetry from research to operations," *Geoscience and Remote Sensing Symposium (IGARSS), 2010 IEEE International*, pp.777-780, 2010.
- [2] J. L. Irish, and W. J. Lillycrop, "Scanning laser mapping of the coastal zone: the SHOALS system," *ISPRS Journal of Photogrammetry and Remote Sensing*, vol. 54, no. 2-3, pp. 123-129, 1999.
- [3] D. Feurer, J. S. Bailly, C. Puech, Y. LeCoarer, and A. Viau, "Very high resolution mapping of river immersed topography by remote sensing," *Progress in Physical Geography*, vol. 32, no. 4, pp. 1-17, 2008.
- [4] J. S. Bailly, Y. Le Coarer, P. Languille, C. J. Stigermark, and T. Allouis, "Geostatistical Estimations of bathymetric LIDAR errors on rivers," *Earth Surface Process and Landforms*, vol. 35, pp. 1199-1210, 2010.
- [5] G.C. Guenther, "Airborne Laser Hydrography, system design and performance factors," *NOAA Professional Paper Ser. NOS1* (National Oceanic and Atmospheric Administration, Rockville, Md.), 1985.
- [6] J. Feigels, "LIDARs for oceanological research: criteria for comparison, main limitations, perspectives," *Ocean Optics XI*, vol. 1750, pp. 473-484, 1992.
- [7] H. M. Tuldahl and K. O. Steinvall, "Simulation of sea surface wave influence on small target detection with airborne laser depth sounding," *Applied Optics*, vol. 42, no. 12, pp. 2462-2483, 2004.
- [8] A. Collin, P. Archambault and B. Long, "Mapping the shallow water seabed habitat with the shoals," *IEEE Transactions on Geoscience and Remote Sensing*, vol. 46, no. 10, pp. 2947-2955, 2010.
- [9] N. Baghdadi, N. Lemarquand, H. Abdallah, and J. S. Bailly, "The relevance of GLAS/ ICESat elevation data for the monitoring of river networks," *Remote Sensing*, vol. 3, pp. 708-720, 2011.
- [10] J. W. McLean, "Modeling of ocean wave effects for lidar remote sensing," *Ocean Optics X, R. W. Spinrad, ed., Proc.*, vol. 1302, pp. 480-491, 1990.
- [11] R. L. Cook, and K. E. Torrance, "A Reflectance Model for Computer Graphics," *ACM Transactions on Graphics*, vol.1, pp. 7-24, 1982.
- [12] A. Bricaud, A. Morel and L. Prieur, "Absorption by dissolved organic matter of the sea (yellow substance) in the UV and visible domains," *Limnology and Oceanography*, vol. 26, no. 1, pp. 43-53, 1981.
- [13] C. D. Mobley, *Light and Water: Radiative Transfer in Natural Waters*, Academic, San Diego, Calif, 1994.
- [14] B. Jutzi, and U. Stilla, "Range determination with waveform recording laser systems using a Wiener Filter," *ISPRS Journal of Photogrammetry and Remote Sensing*, vol. 61, no. 2, pp. 95-107, 2006.
- [15] P. Beckmann, and A. Spizzochino, *The scatter of electromagnetic waves from rough Surfaces*, Norwood, MA: Artech House, 1987.
- [16] H. J. Zwally, B. Schutz, W. Abdalati, J. Abshire, C. Bentley, A. Brenner, J. Bufton, J. Dezio, D. Hancock, D. Harding, T. Herring, B. Minster, K. Quinn, S. Palm, J. Spinhirne, and R. Thomas, "ICESat's laser measurements of polar ice, atmosphere, ocean, and land," *Journal of Geodynamics*, vol. 34, no. 3-4, pp. 405-445, 2002.

- [17] A. Wehr and U. Lohr, "Airborne laser scanning-an introduction and overview," *ISPRS Journal of Photogrammetry and Remote Sensing*, vol. 54, no. 1-2, pp. 68-82, 1999.
- [18] J. A. Warrick, L. A. K. Mertes, D. A. Siegel, and C. Mackenzie, "Estimating suspended sediment concentrations in turbid coastal waters of the Santa Barbara Channel with SeaWiFS" *International Journal of Remote Sensing*, vol. 25, pp. 1995-2002, 2004.
- [19] D. Lorion, "Endiguements et risques d'inondation en milieu tropical. L'exemple de l'île de la Réunion," *Norois*, vol. 201, no. 4, pp. 45-66, 2006.
- [20] B. Jun, K. Gotoh, H. Kitamura, and H. Koh, "Influence of phytoplankton pigments and bottom features for water quality and depth estimation," *Geoscience and Remote Sensing Symposium*, vol. 2, pp. 488-490, 1993.