



**HAL**  
open science

## Micropatterning thermoplasmonic gold nanoarrays to manipulate cell adhesion

Min Zhu, Guillaume Baffou, Nikolaus Meyerbröker, Julien Polleux

► **To cite this version:**

Min Zhu, Guillaume Baffou, Nikolaus Meyerbröker, Julien Polleux. Micropatterning thermoplasmonic gold nanoarrays to manipulate cell adhesion. *ACS Nano*, 2012, 6 (8), pp.7227-7233. 10.1021/nm302329c . hal-00728839

**HAL Id: hal-00728839**

**<https://hal.science/hal-00728839>**

Submitted on 7 Sep 2012

**HAL** is a multi-disciplinary open access archive for the deposit and dissemination of scientific research documents, whether they are published or not. The documents may come from teaching and research institutions in France or abroad, or from public or private research centers.

L'archive ouverte pluridisciplinaire **HAL**, est destinée au dépôt et à la diffusion de documents scientifiques de niveau recherche, publiés ou non, émanant des établissements d'enseignement et de recherche français ou étrangers, des laboratoires publics ou privés.

**Micropatterning Thermoplasmonic Gold Nanoarrays to Manipulate Cell Adhesion**

|                               |   |
|-------------------------------|---|
| Journal:                      | <i>ACS Nano</i>   |
| Manuscript ID:                | Draft   |
| Manuscript Type:              | Article   |
| Date Submitted by the Author: | n/a   |
| Complete List of Authors:     | Zhu, Min; Chinese Academy of Sciences, State Key Laboratory of High Performance Ceramics and Superfine Microstructure, Shanghai Institute of Ceramics<br>Baffou, Guillaume; Aix-Marseille Université, CNRS, Fresnel Institute, Ecole Centrale Marseille<br>Meyerbröcker, Nikolaus; Universität Heidelberg, Angewandte Physikalische Chemie<br>Polleux, Julien; Max Planck Institute of Biochemistry, Molecular Medicine |
|                               |   |

SCHOLARONE™  
Manuscripts

# Micropatterning Thermoplasmonic Gold Nanoarrays To Manipulate Cell Adhesion

Min Zhu<sup>1,2</sup>, Guillaume Baffou<sup>3</sup>, Nikolaus Meyerbröcker<sup>4</sup>, Julien Polleux<sup>1\*</sup>

<sup>1</sup> Max Planck Institute of Biochemistry, Department of Molecular Medicine, 82152 Martinsried, Germany

<sup>2</sup> State Key Laboratory of High Performance Ceramics and Superfine Microstructure, Shanghai Institute of Ceramics, Chinese Academy of Sciences, 1295 Ding-Xi Road, Shanghai, 200050, PR China

<sup>3</sup> Fresnel Institute, CNRS, Aix-Marseille Université, Ecole Centrale Marseille, Campus de St Jérôme, 13013 Marseille, France

<sup>4</sup> Angewandte Physikalische Chemie, Universität Heidelberg, Im Neuenheimer Feld 253, 69120 Heidelberg, Germany

**ABSTRACT** Analysis of cell behavior while reversibly controlling the interactions between the extracellular matrix (ECM) and cell surface receptors such as integrins would allow investigating reciprocal signaling circuits between cells and their surrounding environment. Engineering microstructured culture substrates functionalized with switchable molecules remains the most adopted strategy to trigger surface adhesive properties although these systems exhibit limited reversibility and necessitate sophisticated preparation procedures. Here, we report a straightforward protocol to fabricate biofunctionalized micropatterned gold nanoarrays that favor one-dimensional cell migration and function as plasmonic nanostoves to physically block and orient the formation of new adhesion sites. Being reversible and not restricted spatiotemporally, thermoplasmonic approaches will open new opportunities to further study the complex connections between ECM and cells.

**KEYWORDS:** block copolymer micellar lithography . deep UV lithography . thermoplasmonics . cell adhesion . nanobiotechnology

\* Address correspondence to polleux@biochem.mpg.de.

Submitted for review May 26<sup>th</sup> 2012.

1  
2  
3 Analysis of cell behavior by exogenously controlling cellular processes with  
4 the help of biophysical means represents a complementary approach to  
5 classic methods, such as gene knockdown<sup>1</sup> and pharmacological strategies.<sup>2</sup>  
6  
7 Reversible manipulation of interactions between the extracellular matrix  
8 (ECM) and cell surface receptors such as integrins would allow triggering cell  
9 adhesion to systematically analyze reciprocal signaling circuits between cells  
10 and their surrounding environment. The combination of micro/nanofabrication  
11 with stimulus-responsive surface chemistries proved to be a versatile tool to  
12 dynamically modify extracellular environments. External stimuli such as  
13 voltage and light can switch on or off the adhesive properties of surface-  
14 anchored molecules to dissect new aspects of cell adhesion,<sup>3, 4</sup> detachment<sup>5</sup>  
15 and migration.<sup>6, 7</sup> However, limitations regarding advanced fabrication  
16 procedures, stimulus localization and binding reversibility remain critical to  
17 extend the applicability of chip-based devices and transfer them from  
18 bioengineering to cell biology laboratories.<sup>8</sup> To overcome such issues, the  
19 emergence of new strategies would be critical to exogenously manipulate  
20 cells with the help of biophysical means.

21  
22  
23  
24  
25  
26  
27  
28  
29  
30  
31  
32  
33  
34  
35  
36  
37  
38  
39  
40  
41 In contrast to non-invasive approaches, variations in culture medium  
42 temperature can be used to release cells when cultured onto dishes  
43 functionalized with thermo-responsive polymers.<sup>9</sup> To make use of temperature  
44 in a less invasive manner, electrically heated microwire electrodes were  
45 utilized to induce cellular release of heat-shock proteins.<sup>10</sup> Such approaches  
46 never attempted to manipulate allosteric interactions between cells and their  
47 binding environment due to restricted spatial freedom in generating local heat.  
48  
49  
50  
51  
52  
53  
54  
55  
56  
57  
58  
59  
60  
Gold nanoparticles can act as heat nanosources when excited at their

1  
2  
3 plasmonic resonance due to enhanced light absorption. Thermoplasmonics  
4  
5 and related photothermal effects opened a new realm of applications in  
6  
7 Nanotechnology,<sup>11</sup> which enabled to engineer optofluidic systems,<sup>12, 13</sup>  
8  
9 analyze DNA dissociation,<sup>14</sup> destroy selectively cancerous cells<sup>15, 16</sup> and  
10  
11 release intracellularly bioactive molecules.<sup>17</sup> So far these applications  
12  
13 exclusively used dispersed nanoparticles but never immobilized ones, which  
14  
15 would allow designing functional platforms to manipulate cell adhesion.  
16  
17 Here, we report a straightforward protocol to fabricate biofunctionalized  
18  
19 micropatterned gold nanoarrays that support integrin-mediated adhesion and  
20  
21 function as plasmonic nanostoves to physically block and orient the formation  
22  
23 of new adhesion sites.  
24  
25  
26  
27  
28  
29

## 30 **RESULT AND DISCUSSION**

31  
32 Although many techniques are available for the fabrication of nanoparticle-  
33  
34 based devices, they all have significant shortcomings in using benchtop  
35  
36 facilities, minimizing the number of preparation steps and controlling  
37  
38 independently the device structural parameters. Among various advanced  
39  
40 lithographic techniques, block-copolymer micellar lithography (BCML) has  
41  
42 been recognized as a straightforward method for generating a wide variety of  
43  
44 periodic nanostructures with a long-range order.<sup>18, 19</sup> Although interparticle  
45  
46 distance can be adjusted from 25 to 250 nm, control over particle diameter is  
47  
48 restricted to sizes below 10 nm. Here, we used quasi-hexagonally organized  
49  
50 gold nanoarrays with a separation distance of about 90 nm and a particle  
51  
52 diameter of 7 nm. As such nanostructured surfaces do not exhibit an intense  
53  
54 absorption band for effective photothermal effects, an additional step is  
55  
56  
57  
58  
59  
60

1  
2  
3 needed to grow larger gold particles. Hydroxylamine seeding of colloidal  
4 gold<sup>20</sup> was shown to be applicable to gold nanoarrays upon functionalizing the  
5 substrate with alkyl chains for preventing particles to spontaneously lift-off  
6 during size enlargement.<sup>18</sup> To avoid this laborious substrate modification, we  
7 directly immersed glass-supported gold nanoarrays into an aqueous solution  
8 of Au<sup>3+</sup> and tested for the first time ethanolamine as reducing agent. Since  
9 alkylamines can mediate the generation of gold nanoparticles while acting as  
10 dual capping and reducing agents,<sup>21</sup> we chose ethanolamine because of its  
11 water solubility. As displayed in Figure 1, we successfully applied  
12 ethanolamine seeding of colloidal gold to nanoarrays for which the particle  
13 diameter homogeneously increased from 7 to 32 nm in 20 minutes and the  
14 plasmon band intensity centered at 530 nm became significantly stronger.  
15  
16  
17  
18  
19  
20  
21  
22  
23  
24  
25  
26  
27  
28

29 To make these nanostructures compatible with cell experiments, we first  
30 passivated the glass background with poly(ethylene glycol) (PEG) and  
31 functionalized gold with cysteine-terminated linear RGD.<sup>22</sup> RGD is a  
32 conserved motif found in several matrix proteins, such as fibronectin. RGD  
33 epitopes are bound by transmembrane receptors of the integrin family, which  
34 mediate adhesion and physically connect the cytoskeleton to the ECM.<sup>23, 24</sup> In  
35 tissue culture, cells migrate on extended surfaces in random directions. To  
36 orient their behavior, it is possible to confine cells onto defined areas by using  
37 micropatterned substrates coated with ECM proteins. For instance, cell  
38 migration on thin fibronectin-coated lines was shown to be faster and more  
39 persistent similarly as *in vivo*-like situations.<sup>25</sup> To apply this concept to our  
40 setup, we decided to structure gold nanoparticle distribution onto 10  $\mu\text{m}$ -wide  
41 lines for confining cell adhesion into one dimension.  
42  
43  
44  
45  
46  
47  
48  
49  
50  
51  
52  
53  
54  
55  
56  
57  
58  
59  
60

1  
2  
3 To prepare micropatterned gold nanoarrays, BCML can be combined to other  
4 lithography techniques. For instance, electron-beam lithography can directly  
5 fix gold-loaded micelles onto substrates via a serial exposure process.<sup>26</sup>  
6  
7 Despite a patterning precision of 100 nm, this method necessitates a  
8 scanning electron microscope and long processing rates. More commonly  
9 used, parallel procedures are more effective to fabricate simultaneously  
10 patterns with sizes that remain larger than one micrometer.<sup>27-29</sup> However,  
11 these advanced protocols still hinder the high sample throughput necessary  
12 for biological screening experiments. In an effort to work with affordable  
13 facilities and minimize the number of processing steps, we used the simplicity  
14 of a serial approach in a parallel fashion by using deep UV illumination onto  
15 gold-loaded micellar monolayers. With a wavelength of 185 nm, deep UV  
16 lithography can directly photoconvert chemical groups without using  
17 photosensitizers and cross-linkers.<sup>30</sup> Here, we successfully prepared  
18 micropatterned gold nanoparticles by illuminating micellar monolayers with  
19 deep UV through a photomask and transferring the substrate in toluene to lift-  
20 off non-irradiated micelles (Figure 2). As revealed by X-ray photoelectron  
21 spectroscopy (Figure S1), the immobilization of micelles occurred upon  
22 partially oxidizing their polystyrene shells with deep UV, which enhances their  
23 affinity to the glass substrate and reduces their solubility in toluene. As  
24 displayed in Figure 2, this approach can rapidly micropattern gold  
25 nanoparticles with various geometries and feature sizes of about 500 nm,  
26 while conserving their quasi-hexagonal organization.  
27  
28 Next, we seeded mouse fibroblasts onto 10  $\mu\text{m}$ -wide lines upon passivating  
29 the glass background and biofunctionalizing gold nanoparticles of 35 nm in  
30  
31  
32  
33  
34  
35  
36  
37  
38  
39  
40  
41  
42  
43  
44  
45  
46  
47  
48  
49  
50  
51  
52  
53  
54  
55  
56  
57  
58  
59  
60

1  
2  
3 diameter. Similarly as on fibronectin-coated lines, fibroblasts selectively  
4 adhered to the linear RGD-functionalized gold nanoarrays and adopted a  
5 polarized shape to initiate migration without modifying the structure of gold  
6 nanoarrays (Figure 3 and S2). Upon staining filamentous actin (F-actin) and  
7 paxillin, an adaptor protein that connects actin cytoskeleton to the cytoplasmic  
8 tail of integrins, cells could assemble similar intracellular architectures on both  
9 types of substrates, as revealed by confocal fluorescence microscopy (Figure  
10 3).

11  
12 Besides confining the migration path of fibroblasts, micropatterned gold  
13 nanoarrays have the ability to generate heat when illuminated with a laser  
14 beam at  $\lambda = 532$  nm, close to the plasmon resonance wavelength. In contrast  
15 to electrically-heated microwires, the use of thermoplasmonic structures  
16 provide more spatial freedom, as control over thermal variations does not only  
17 depend on pattern geometry but also on laser position. By using quantitative  
18 optical phase analysis that enables to image heat profiles,<sup>31</sup> we found that  
19 temperature increases proportionally with laser power. Although the laser  
20 beam displays a homogeneous power density, we measured thermal  
21 variations of 12.8, 18.7 and 24.2 K at the beam center and 7.5, 13 and 16.7 K  
22 at its periphery for 2, 3 and 4 mW output powers, respectively (Figure 4). The  
23 temperature variations follow a parabolic profile within the illumination area  
24 and it decreases in  $1/R$  outside the beam.<sup>31</sup> Since many cellular components  
25 absorb visible light, we decided to overcome phototoxicity by benefiting from  
26 the temperature variations taking place outside the illumination area to  
27 manipulate cells.  
28  
29  
30  
31  
32  
33  
34  
35  
36  
37  
38  
39  
40  
41  
42  
43  
44  
45  
46  
47  
48  
49  
50  
51  
52  
53  
54  
55  
56  
57  
58  
59  
60



1  
2  
3 Here, we tested the ability of local heat to interfere with cell adhesion by  
4 simultaneously blocking and guiding protrusive activity during spreading and  
5 migration. For this purpose, we first modified an epifluorescence microscope  
6 by replacing the excitation lamp with a green diode laser (Figure S3). Upon  
7 seeding fibroblasts, we first monitored cell spreading with live-cell imaging in  
8 different conditions (Figure 5a,b,c, Movie 1). Without laser, the cell spread  
9 equally in both directions for 30 minutes and finally polarized to initiate  
10 migration (Figure 5a). By illuminating cell surrounding with a laser beam of  
11 about 3 mW, the generation of local heat blocked the formation of adhesion  
12 sites in one direction and allowed protrusive activity in the opposite one,  
13 leading the cell to polarize earlier and initiate migration faster (Figure 5b). As  
14 a control experiment, we immobilized RGD epitopes onto PEG-coated glass<sup>30</sup>  
15 to prevent heat generation (Figure 5c). In these conditions, the cell entered  
16 the laser beam and died within less than twenty minutes due to phototoxicity,  
17 confirming the ability of local heat to restrain cells to adhere. As a second  
18 example of cell manipulation, migrating cells could also be stopped for up to  
19 30 minutes by local heat, acting similarly as a wall (Figure 5d,e, Movie 2).  
20 Upon turning the laser illumination off, cells instantly reinitiated migration in  
21 the same direction, which emphasizes the reversible character of  
22 thermoplasmonic manipulations. In both examples, it is interesting to note the  
23 ability of cells to adapt their behavior depending on local temperature.  
24 Blocking protrusive activity may implicate the inability of integrins to tightly  
25 bind to RGD epitopes in a warmer environment. According to Figure 4, cell  
26 periphery experiences a local temperature of about 44 °C when localized at  
27 2.5 μm away from the beam border. Although such a temperature  
28  
29  
30  
31  
32  
33  
34  
35  
36  
37  
38  
39  
40  
41  
42  
43  
44  
45  
46  
47  
48  
49  
50  
51  
52  
53  
54  
55  
56  
57  
58  
59  
60

1  
2  
3 corresponds to an extreme physiological condition, cells neither died nor lost  
4  
5 their ability to migrate persistently.  
6  
7

## 8 9 **CONCLUSION**

10  
11 In the present study, we report a simple and cost-effective protocol to  
12  
13 micropattern thermoplasmonic nanoarrays by combining deep UV and  
14  
15 micellar lithography. Being reversible and not restricted spatiotemporally, the  
16  
17 generation of photothermal gradients in the vicinity of cells interferes  
18  
19 microlocally with cell adhesion and allows both guiding and blocking cell  
20  
21 migration in a defined microenvironment. As future challenges, it would be  
22  
23 crucial to extend the use of deep UV-assisted micellar nanolithography for  
24  
25 designing gold structures that absorb wavelengths within the tissue  
26  
27 transparency window, such as near-infrared. By overcoming cellular  
28  
29 phototoxicity and fluorophore photobleaching, thermoplasmonic manipulation  
30  
31 could be performed while analyzing live-cell spreading, migration and  
32  
33 detachment by fluorescence microscopy. Moreover, this approach could be  
34  
35 applied to spatiotemporally manipulate the affinities of other cell surface  
36  
37 receptors to their respective ligands, which would enable to further dissect  
38  
39 reciprocal signaling circuits between cells and their environment.  
40  
41  
42  
43  
44  
45  
46  
47  
48  
49  
50  
51  
52  
53  
54  
55  
56  
57  
58  
59  
60

## EXPERIMENTAL METHODS

**Fabrication of extended gold nanoarrays.** In a typical synthesis, polystyrene(1056)-*block*-poly(2-vinylpyridine)(495) (PS<sub>1056</sub>-*b*-P2VP<sub>495</sub>) from Polymer Source Inc. was dissolved at room temperature in anhydrous toluene (Sigma-Aldrich) with a concentration of 5 mg/mL and stirred for 2 days. The quantity of gold precursor was calculated relative to the number of P2VP units ( $N_{P2VP}$ ) with a loading parameter (L) equal to 0.5, *i.e.*, 1 molecule of HAuCl<sub>4</sub> for 2 P2VP monomers. Hydrogen tetrachloroaurate (III) trihydrate (HAuCl<sub>4</sub>·3H<sub>2</sub>O, Sigma-Aldrich) was added to the polymer solution and stirred for 2 days in a sealed glass vessel. Glass cover slips (Carl Roth) were cleaned in a piranha solution for at least 5 hours and were extensively rinsed with MilliQ water and dried under a stream of nitrogen. Gold-loaded micellar monolayers were prepared by dip-coating a glass coverslip into the previously prepared solutions with a constant velocity equal to 24 mm·min<sup>-1</sup>. To remove the organic template and form inorganic nanoparticles, the dip-coated glass slides were exposed to oxygen plasma (150 W, 0.15 mbar, 45 min, PVA TEPLA 100 Plasma System). Scanning electron measurements were performed with a Dual Beam<sup>TM</sup> (FIB/SEM) instrument (Quanta 3D FEG, FEI, Hillsboro).

**Fabrication of micropatterned gold nanoarrays.** This protocol is schematically described in Figure 2. Briefly, a glass coverslip coated with a gold-loaded micellar monolayer was immobilized with vacuum onto a mask holder and then sandwiched with a photomask made of a patterned chromium layer supported on UV-transparent quartz (ML&C, Jena). The system was then exposed to deep UV light using a low-pressure mercury lamp (Heraeus Noblelight GmbH, NIQ 60/35 XL long-life lamp, quartz tube, 60 W) at 5 cm distance for 7 min. The micellar monolayer was then incubated for 30 minutes in toluene to wash non-irradiated micelles away and dried with the hood airflow. The enlargement of immobilized gold nanoparticles was performed by incubating the substrate for several minutes in 10 mL of an aqueous solution containing ethanolamine (2 mM) and KAuCl<sub>4</sub> (0.1 wt%).

**Surface functionalization.** Gold nanoarrays supported on glass coverslips were incubated in water with 0.25 mg/mL of PLL-*g*-PEG (SuSoS) for 2 hours. The substrates were rinsed with water, dried with nitrogen and incubated for 5 hours in a 50 μM aqueous solution of

1  
2  
3 fibronectin-mimicking polypeptide, N-terminated C-L<sub>3</sub>G<sub>3</sub>PHRSN-G<sub>6</sub>-RGDS.<sup>32</sup> Finally, the  
4 substrates were rinsed and incubated overnight in water before plating fibroblasts.

5  
6 **Thermal imaging of micropatterned gold nanoarrays**<sup>31</sup>. Temperature measurements were  
7 performed by quadriwave shearing interferometry (TIQSI), a recent thermal imaging  
8 technique based on thermal-induced variation of the refractive index of the liquid  
9 environment. This approach is particularly simple since it is label-free and it allows rapidly and  
10 quantitatively mapping a temperature distribution with an accuracy of less than 1 K. Due to  
11 the modification of the refractive index in the heated region, the optical wavefront of an  
12 incident light experiences a distortion that is imaged using a Hartmann grating in front of a  
13 CCD camera. The interferogram recorded by the CCD camera is then numerically processed  
14 to retrieve the actual temperature distribution.

15  
16 **Setup for thermoplasmonic manipulation.** In order to microlocally generate heat while  
17 performing live-cell imaging, we equipped a Zeiss Axiovert 40 CFL microscope (Carl Zeiss,  
18 Jena, Germany) with a cell culture chamber (37 °C, 5 % CO<sub>2</sub>), a green laser (Laserglow,  
19 Hercules 250,  $\lambda = 532$  nm), a beam-splitter, a band pass filter and a camera (Canon, EOS  
20 450D), as depicted in Supplementary Fig. S4. For cell manipulation experiments,  
21 approximately  $1 \cdot 10^6$  cells in DMEM containing 0.5 % FBS were seeded onto functionalized  
22 micropatterned gold nanoarrays. Thermoplasmonic experiments were conducted within the  
23 following 10 hours to avoid the contribution of ECM secretion.

24  
25 **Immunofluorescence.** After three hours in culture, fibroblasts were fixed with 2% PFA,  
26 permeabilised with 0.1% Triton X-100 and incubated with primary and secondary antibodies.  
27 Paxillin was stained with anti-paxillin (mouse monoclonal; Transduction Laboratories), F-actin  
28 with phalloidin (Molecular Probes) and nuclei with DAPI. Secondary antibodies used for  
29 immunofluorescence were from Invitrogen (Alexa488, Alexa647). The fluorescent images  
30 were collected by laser scanning confocal microscopy (TCS SP5; Leica) with a 63x oil  
31 objective and Leica confocal software.

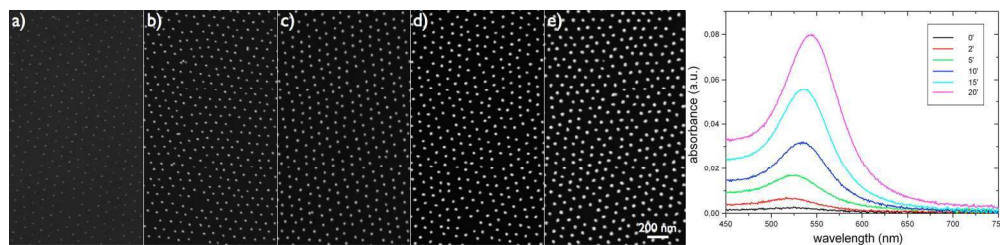
32  
33  
34  
35  
36  
37  
38  
39  
40  
41  
42  
43  
44  
45  
46  
47  
48  
49  
50  
51  
52  
53 *Acknowledgments.* We thank Reinhard Fässler for support and Herbert Schiller for careful  
54 reading of the manuscript. The 7<sup>th</sup> Framework Program of the European Community (FP7)  
55 through the Marie Curie Action for career development (IEF – “Multi-PGNAs”) and the Max  
56 Planck Society financially supported this work.  
57  
58  
59  
60

1  
2  
3 **Supporting Information Available:** Supplementary methods; X-ray photoelectron spectroscopy  
4 analysis; additional low and high-magnification SEM images and schematics of microscope  
5 setup used for thermoplasmonic manipulation. This material is available free of charge via the  
6 Internet at <http://pubs.acs.org>.  
7  
8

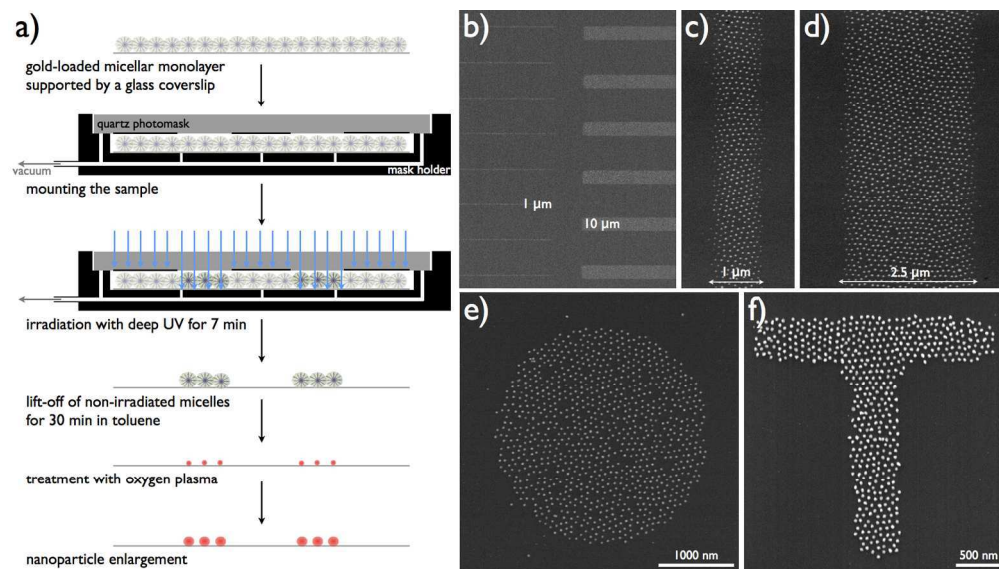
## 9 REFERENCES AND NOTES

- 10  
11 1. Vicente-Manzanares, M.; Ma, X.; Adelstein, R. S.; Horwitz, A. R., Non-muscle myosin II  
12 takes centre stage in cell adhesion and migration. *Nat Rev Mol Cell Biol* 2009, 10, 778-790.  
13 2. Fenteany, G.; Zhu, S., Small-molecule inhibitors of actin dynamics and cell motility. *Curr*  
14 *Top Med Chem* 2003, 3, 593-616.  
15 3. Collier, J.; Mrksich, M., Engineering a biospecific communication pathway between cells and  
16 electrodes. *Proc Natl Acad Sci USA* 2006, 103, 2021-2025.  
17 4. Nakanishi, J.; Kikuchi, Y.; Inoue, S.; Yamaguchi, K.; Takarada, T.; Maeda, M.,  
18 Spatiotemporal control of migration of single cells on a photoactivatable cell microarray. *J Am Chem*  
19 *Soc* 2007, 129, 6694-6695.  
20 5. Wildt, B.; Wirtz, D.; Searson, P. C., Programmed subcellular release for studying the  
21 dynamics of cell detachment. *Nat Methods* 2009, 6, 211-213.  
22 6. Jiang, X.; Bruzewicz, D. A.; Wong, A. P.; Piel, M.; Whitesides, G. M., Directing cell  
23 migration with asymmetric micropatterns. *Proc Natl Acad Sci USA* 2005, 102, 975-8.  
24 7. Rolli, C. G.; Nakayama, H.; Yamaguchi, K.; Spatz, J. P.; Kemkemer, R.; Nakanishi, J.,  
25 Switchable adhesive substrates: Revealing geometry dependence in collective cell behavior.  
26 *Biomaterials* 2012, 33, 2409-2418.  
27 8. Robertus, J.; Browne, W. R.; Feringa, B. L., Dynamic control over cell adhesive properties  
28 using molecular-based surface engineering strategies. *Chem Soc Rev* 2010, 39, 354.  
29 9. Nagase, K.; Kobayashi, J.; Okano, T., Temperature-responsive intelligent interfaces for  
30 biomolecular separation and cell sheet engineering. *J R Soc Interface* 2009, 6, S293-S309.  
31 10. Ginet, P.; Montagne, K.; Akiyama, S.; Rajabpour, A.; Taniguchi, A.; Fujii, T.; Sakai, Y.; Kim,  
32 B.; Fourmy, D.; Volz, S., Towards single cell heat shock response by accurate control on thermal  
33 confinement with an on-chip microwire electrode. *Lab Chip* 2011, 11, 1513.  
34 11. Baffou, G.; Quidant, R., Thermo-plasmonics: using metallic nanostructures as nano-sources of  
35 heat. *Laser & Photon. Rev.* 2012, early view.  
36 12. Liu, G. L.; Kim, J.; Lu, Y.; Lee, L. P., Optofluidic control using photothermal nanoparticles.  
37 *Nat Mater* 2006, 5, 27-32.  
38 13. Donner, J. S.; Baffou, G.; McCloskey, D.; Quidant, R., Plasmon-Assisted Optofluidics. *Acs*  
39 *Nano* 2011, 5, 5457-5462.  
40 14. Stehr, J.; Hrelescu, C.; Sperling, R. A.; Raschke, G.; Wunderlich, M.; Nichtl, A.; Heindl, D.;  
41 Kurzinger, K.; Parak, W. J.; Klar, T. A.; Feldmann, J., Gold NanoStoves for microsecond DNA  
42 melting analysis. *Nano Lett.* 2008, 8, 619-623.  
43 15. Hirsch, L.; Stafford, R.; Bankson, J.; Sershen, S.; Rivera, B.; Price, R.; Hazle, J.; Halas, N.;  
44 West, J., Nanoshell-mediated near-infrared thermal therapy of tumors under magnetic resonance  
45 guidance. *Proc Natl Acad Sci USA* 2003, 100, 13549-13554.  
46 16. El-Sayed, I.; Huang, X.; El-Sayed, M., Surface plasmon resonance scattering and absorption  
47 of anti-EGFR antibody conjugated gold nanoparticles in cancer diagnostics: Applications in oral  
48 cancer. *Nano Lett.* 2005, 5, 829-834.  
49 17. Huschka, R.; Neumann, O.; Barhoumi, A.; Halas, N. J., Visualizing Light-Triggered Release  
50 of Molecules Inside Living Cells. *Nano Lett.* 2010, 10, 4117-4122.  
51 18. Lohmueller, T.; Aydin, D.; Schwieder, M.; Morhard, C.; Louban, I.; Pacholski, C.; Spatz, J.  
52 P., Nanopatterning by block copolymer micelle nanolithography and bioinspired applications.  
53 *Biointerphases* 2011, 6, MR1-MR12.  
54 19. Polleux, J.; Rasp, M.; Louban, I.; Plath, N.; Feldhoff, A.; Spatz, J. P., Benzyl Alcohol and  
55 Block Copolymer Micellar Lithography: A Versatile Route to Assembling Gold and in Situ Generated  
56 Titania Nanoparticles into Uniform Binary Nanoarrays. *Acs Nano* 2011, 5, 6355-6364.  
57 20. Brown, K.; Lyon, L.; Fox, A.; Reiss, B.; Natan, M., Hydroxylamine seeding of colloidal Au  
58 nanoparticles. 3. Controlled formation of conductive Au films. *Chem Mater* 2000, 12, 314-323.  
59 21. Aslam, M.; Fu, L.; Su, M.; Vijayamohan, K.; Dravid, V. P., Novel one-step synthesis of  
60 amine-stabilized aqueous colloidal gold nanoparticles. *J. Mater. Chem.* 2004, 14, 1795.

22. Arnold, M.; Cavalcanti-Adam, E.; Glass, R.; Blummel, J.; Eck, W.; Kantelehner, M.; Kessler, H.; Spatz, J., Activation of integrin function by nanopatterned adhesive interfaces. *Chemphyschem* 2004, 5, 383-388.
23. Polleux, J., Bioactive Surfaces. Interfacing Cell Surface Receptors to Hybrid Nanopatterned Surfaces: A Molecular Approach for Dissecting the Adhesion Machinery; Börner H. G., Lutz J. F., Eds.; Springer-Verlag: Heidelberg Berlin, 2011, 240, 79-102.
24. Takahashi, S.; Leiss, M.; Moser, M.; Ohashi, T.; Kitao, T.; Heckmann, D.; Pfeifer, A.; Kessler, H.; Takagi, J.; Erickson, H. P.; Fassler, R., The RGD motif in fibronectin is essential for development but dispensable for fibril assembly. *J Cell Biol* 2007, 178, 167-178.
25. Doyle, A. D.; Wang, F. W.; Matsumoto, K.; Yamada, K. M., One-dimensional topography underlies three-dimensional fibrillar cell migration. *J Cell Biol* 2009, 184, 481-90.
26. Spatz, J.; Chan, V.; Mossmer, S.; Kamm, F.; Plettl, A.; Ziemann, P.; Moller, M., A combined top-down/bottom-up approach to the microscopic localization of metallic nanodots. *Adv. Mater.* 2002, 14, 1827-1832.
27. Aydin, D.; Schwieder, M.; Louban, I.; Knoppe, S.; Ulmer, J.; Haas, T. L.; Walczak, H.; Spatz, J. P., Micro-Nanostructured Protein Arrays: A Tool for Geometrically Controlled Ligand Presentation. *Small* 2009, 5, 1014-1018.
28. Chen, J.; Mela, P.; Moeller, M.; Lensen, M. C., Microcontact Deprinting: A Technique to Pattern Gold Nanoparticles. *Acs Nano* 2009, 3, 1451-1456.
29. Gorzolnik, B.; Mela, P.; Moeller, M., Nano-structured micropatterns by combination of block copolymer self-assembly and UV photolithography. *Nanotechnology* 2006, 17, 5027-5032.
30. Azioune, A.; Storch, M.; Bornens, M.; They, M.; Piel, M., Simple and rapid process for single cell micro-patterning. *Lab Chip* 2009, 9, 1640-1642.
31. Baffou, G.; Bon, P.; Savatier, J.; Polleux, J.; Zhu, M.; Merlin, M.; Rigneault, H.; Monneret, S., Thermal Imaging of Nanostructures by Quantitative Optical Phase Analysis. *Acs Nano* 2012, 6, 2452-2458.
32. Ebara, M.; Yamato, M.; Aoyagi, T.; Kikuchi, A.; Sakai, K.; Okano, T., A Novel Approach to Observing Synergy Effects of PHSRN on Integrin-RGD Binding Using Intelligent Surfaces. *Adv. Mater.* 2008, 20, 3034-3038.

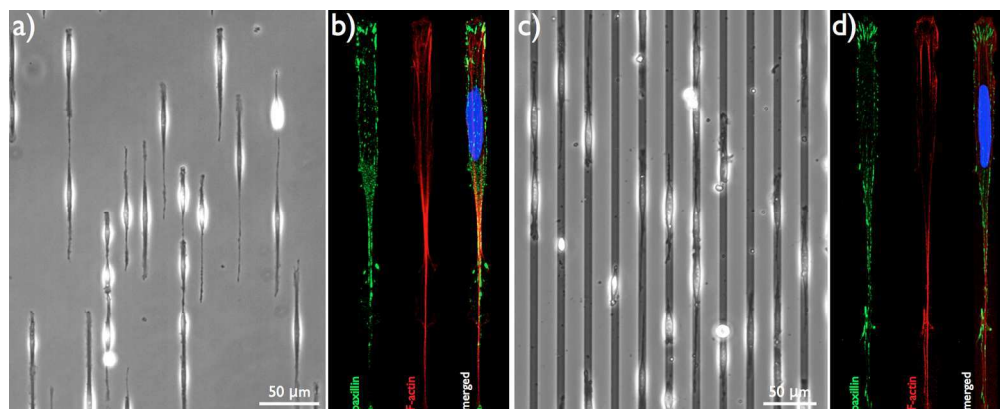


Ethanolamine-assisted growth of gold nanoparticles supported on glass coverslips. SEM images of gold nanoarrays after immersion for (a) 0, (b) 5, (c) 10, (d) 15 and (e) 20 minutes in an aqueous solution of ethanolamine (2mM) and KAuCl<sub>4</sub> (0.1 wt%). (f) Absorption spectra of the different gold nanoarrays upon rinsing with water and drying with N<sub>2</sub>.  
677x159mm (72 x 72 DPI)

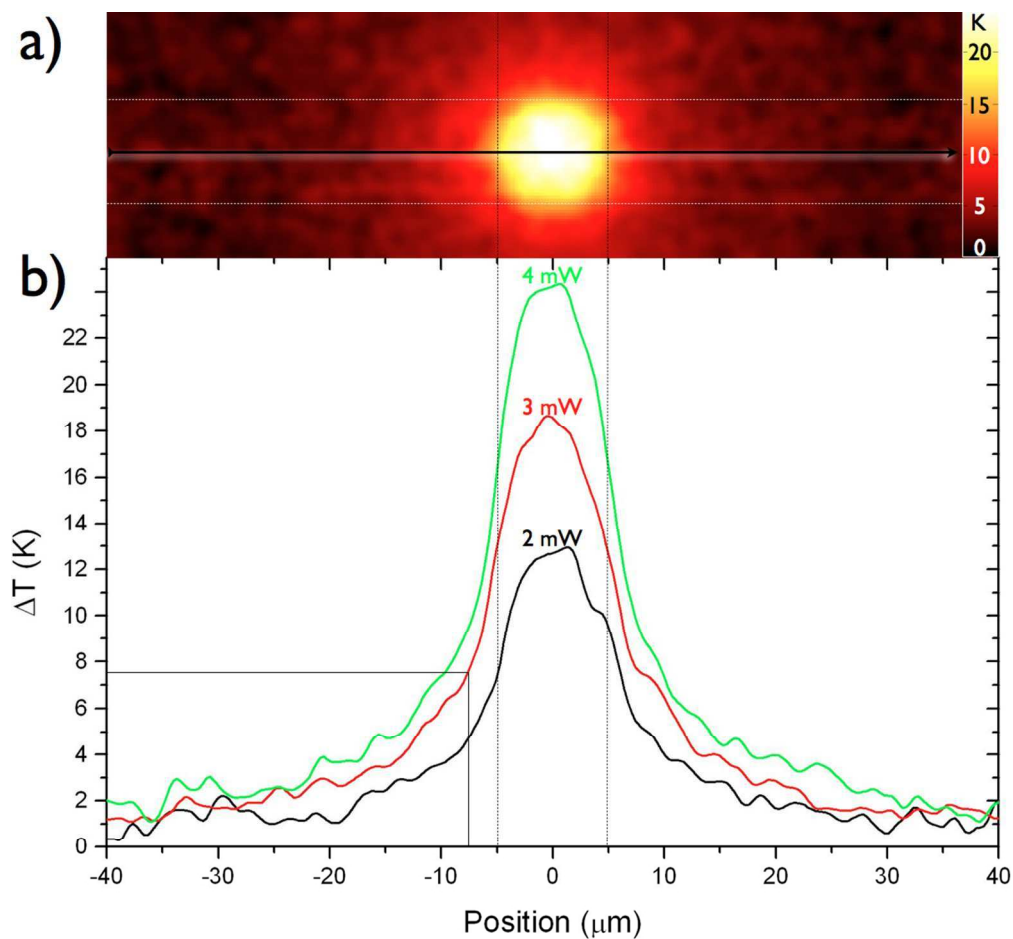


Combining deep UV and micellar lithography to micropattern thermoplasmonic gold nanoarrays. (a) Schematics displaying the successive steps necessary to fabricate micropatterned gold nanoparticles. (b) Low-magnification SEM image of nanostructured lines with a width of 1 and 10  $\mu\text{m}$ . (c), (d), (e), and (f), display high-resolution SEM images of micropatterned gold nanoarrays of various shapes and dimensions. 677x381mm (72 x 72 DPI)



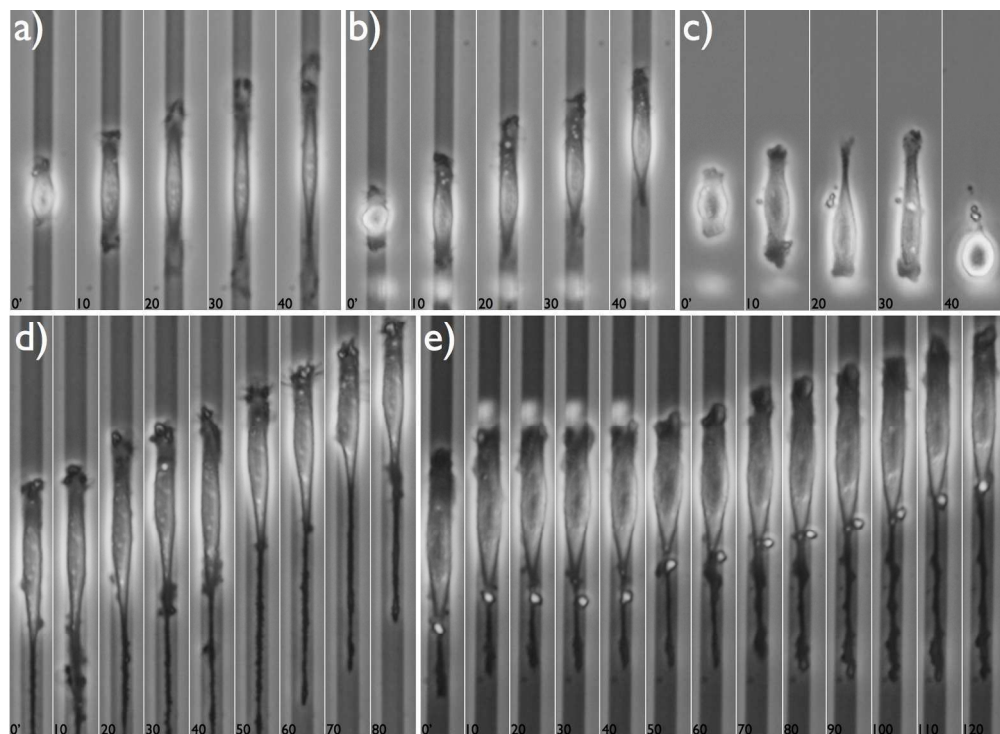


Cell adhesion on FN- and RGD-coated 10  $\mu\text{m}$ -wide lines occurs similarly. Phase contrast microscopy images of mouse fibroblasts migrating onto (a) FN-coated glass and (c) RGD-functionalized gold nanoparticles of 35 nm in diameter separated by 90 nm. Confocal fluorescence microscopy images of fixed cells stained with GFP-labeled paxillin and red-labeled F-actin displaying adhesive sites and cytoskeleton of a cell migrating onto (b) FN-coated glass, and (d) RGD-coated gold nanoparticles.  
677x273mm (72 x 72 DPI)



Photothermal effects of a quasi-hexagonal lattice of spherical gold nanoparticles under laser illumination at  $\lambda=532$  nm. The measurements were performed on a gold nanoarrays made of 35 nm particles with an interdistance of 90 nm and irradiated by a beam of 10  $\mu\text{m}$  in diameter at powers of 2, 3 and 4 mW. (a) Temperature distribution exposed to a laser power of 4 mW and (b) temperature profile obtained from the linescan (black arrow in (a)). The white dashed lines indicate the borders of the 10  $\mu\text{m}$ -wide lines made of gold particles.

423x392mm (72 x 72 DPI)



Heat-assisted manipulation of cell adhesion during spreading and migration: Guiding cell migration during spreading. Phase contrast images of cells spreading onto RGD-coated nanoparticles of 35 nm in diameter (a) without and (b) with laser illumination of 3 mW for 40 minutes. (c) Cell spreading onto RGD-coated glass coverslip under the same irradiation conditions as in (b). Blocking cell adhesion during migration. Phase contrast images of cells migrating onto RGD-coated particles (d) without and (e) with laser illumination of 3 mW for 30 minutes. Each image has a time interval of 10 minutes  
722x524mm (72 x 72 DPI)