



**HAL**  
open science

## Time-space adaptive numerical methods for the simulation of combustion fronts

Max Duarte, Stéphane Descombes, Christian Tenaud, Sébastien Candel, Marc Massot

► **To cite this version:**

Max Duarte, Stéphane Descombes, Christian Tenaud, Sébastien Candel, Marc Massot. Time-space adaptive numerical methods for the simulation of combustion fronts. 2012. hal-00727442v1

**HAL Id: hal-00727442**

**<https://hal.science/hal-00727442v1>**

Preprint submitted on 3 Sep 2012 (v1), last revised 29 Dec 2012 (v2)

**HAL** is a multi-disciplinary open access archive for the deposit and dissemination of scientific research documents, whether they are published or not. The documents may come from teaching and research institutions in France or abroad, or from public or private research centers.

L'archive ouverte pluridisciplinaire **HAL**, est destinée au dépôt et à la diffusion de documents scientifiques de niveau recherche, publiés ou non, émanant des établissements d'enseignement et de recherche français ou étrangers, des laboratoires publics ou privés.

# Time-space adaptive numerical methods for the simulation of combustion fronts<sup>☆</sup>

Max Duarte<sup>a,b,1,\*</sup>, Stéphane Descombes<sup>b</sup>, Christian Tenaud<sup>c</sup>, Sébastien Candel<sup>a</sup>, Marc Massot<sup>a,d</sup>

<sup>a</sup>Laboratoire EM2C - UPR CNRS 288, Ecole Centrale Paris, Grande Voie des Vignes, 92295 Chatenay-Malabry Cedex, France.

<sup>b</sup>Laboratoire de Mathématiques J.A. Dieudonné UMR 7351 CNRS UNSA, Université de Nice - Sophia Antipolis, Parc Valrose, 06108 Nice Cedex 02, France.

<sup>c</sup>LIMSI - UPR CNRS 3251, Campus d'Orsay, 91403 Orsay Cedex, France.

<sup>d</sup>Center for Turbulence Research, Stanford University, Building 500, 488 Escondido Mall, Stanford CA 94305-3035, USA.

---

## Abstract

This paper presents a new computational strategy for the simulation of combustion fronts based on adaptive time operator splitting and spatial multiresolution. High-order and dedicated one-step solvers compose the splitting scheme for the reaction, diffusion, and convection subproblems, to independently cope with their inherent numerical difficulties and to properly solve the corresponding temporal scales. Adaptive and thus highly compressed spatial representations for localized fronts originating from multiresolution analysis result in important reductions of memory usage, and hence numerical simulations with sufficiently fine spatial resolution can be performed with standard computational resources. The computational efficiency is further enhanced by splitting time steps established beyond standard stability constraints associated to mesh size or stiff source time scales. The splitting time steps are chosen according to a dynamic splitting technique relying on solid mathematical foundations, which ensures error control of the time integration and successfully discriminates time-varying multi-scale physics. For a given semi-discretized problem, the solution scheme provides dynamic accuracy estimates that reflect the quality of numerical results in terms of numerical errors of integration and compressed spatial representations, for general multi-dimensional problems modeled by stiff PDEs. The strategy is efficiently applied to simulate the propagation of laminar premixed flames interacting with vortex structures, as well as various configurations of self-ignition processes of diffusion flames in similar vortical hydrodynamics fields. A detailed study of the error control is provided and show the potential of the approach. It yields large gains in CPU time, while consistently describing a broad spectrum of space and time scales as well as different physical scenarios. Such a strategy enables simulations of complex nonlinear front dynamics with standard computational resources, which would be out of reach with most existing techniques.

*Keywords:* Laminar flames, time operator splitting, space adaptive multiresolution, time adaptive integration, error control

---

## 1. Introduction

Combustion simulation raises essentially multi-scale problems defined by a competition between a variety of processes evolving at different rates in time and featuring a broad range of length scales [1]. Such simulations are mathematically stiff, due to the broad spectrum of time scales in the nonlinear chemical terms and to the steep, spatially localized gradients in the reaction fronts. Direct numerical simulations (DNS) ensuring high fidelity numerical solutions with a sufficiently fine resolution of all temporal and spatial scales, necessarily require important computational resources. One approach to overcome computational restrictions in terms of CPU time and memory storage capacities is thus founded on the development of efficient techniques taking full advantage of massively parallel computing architectures and growth of computer power (see, e.g., [2, 3]). Another strategy consists in reducing the modeling complexity and associated computational effort by more efficient handling of the time and spatial scales, while guaranteeing reliable predictive capabilities. This is exemplified by chemical kinetics reduction methods [4, 5], tabulation techniques [6, 7], or artificial flame thickening schemes [8] which all focus on an improved handling of time and spatial scales. The spatial filtering exploited in large eddy simulations (LES) relies on similar ideas. In LES the subgrid scales are modeled to effectively reduce the scale diversity and allow simulations of industrial configurations or scientific problems which could not have been handled by direct numerical simulations. Modern LES flow solvers also exploit parallel capabilities of modern computer architectures to simulate physically and geometrically complex configurations (see, e.g., [9, 10]).

In general, the design and practical implementation of the numerical scheme constitute key elements for successful simulations. However, while many numerical methods carefully designed to ensure accurate solutions remain suitable for academic problems or small scale applications, realistic simulations of complex problems need to exploit methods of lower algorithmic complexity. As an illustration explicit time integration techniques are often implemented in industrial and scientific codes, for their inherent parallelism capabilities. Computer power can thus compensate severe restrictions of these schemes when they are applied to stiff problems. In this general context, it is important to develop alternative and more efficient strategies for such problems. The resulting algorithms aim at reducing computational requirements by thoroughly enhancing the numerical method of solution. This approach can then be coupled with other modeling considerations, like those presented previously, and with a suitable exploitation of modern computing capabilities. For instance, implicit time integration methods are investigated for complex applications [11, 12], and efforts are also being made on computationally less demanding hybrid methods which combine implicit and explicit schemes such as IMEX [13, 14] or operator splitting [15, 16] techniques.

---

<sup>☆</sup>This research was supported by a fundamental project grant from ANR (French National Research Agency - ANR Blancs): *Séchelles* (PI S. Descombes - 2009-2013) and by a DIGITEO RTRA project: *MUSE* (PI M. Massot - 2010-2014). The support of the France-Stanford Center for Interdisciplinary Studies through a collaborative project grant entitled "Multi-scale mathematical modeling and numerical methods for multiphase and reactive flows" (PIs: P. Moin and M. Massot) has been very helpful. We also acknowledge the computational resources of the Mesocentre of Ecole Centrale Paris where some of the simulations were performed.

\*Corresponding author

Email addresses: [max.duarte@ecp.fr](mailto:max.duarte@ecp.fr), [maximuspy@gmail.com](mailto:maximuspy@gmail.com) (Max Duarte), [stephane.descombes@unice.fr](mailto:stephane.descombes@unice.fr) (Stéphane Descombes), [christian.tenaud@limsi.fr](mailto:christian.tenaud@limsi.fr) (Christian Tenaud), [sebastien.candel@ecp.fr](mailto:sebastien.candel@ecp.fr) (Sébastien Candel), [marc.massot@ecp.fr](mailto:marc.massot@ecp.fr) (Marc Massot)

<sup>1</sup>Present address: Department of Mechanical Engineering, Yale University, Becton Center, 15 Prospect Street, New Haven, CT 06520-8284, USA.

In this context, either for DNS or for other types of simulations on single or multi-processor architectures, research in terms of numerical methods is concentrated on accelerating schemes, ensuring adequate resolution properties and a proper handling of temporal and spatial scales of the problem. Nevertheless, due to the computational costs of realistic simulations, the validation of numerical results is restricted either to qualitative analysis for complex applications, or to precise comparisons with analytical or small scale academic configurations. The framework of the present investigation is therefore set by a new solution paradigm that complements and further extends the general approach, by introducing accuracy tracking capabilities in the numerical strategies. The objective is to control approximation errors associated to the numerical solution while capturing the dominant scales, and hence to estimate the quality of the results independent of the complexity or dimension of the computational model. We propose in this article a novel method, based on a dedicated operator splitting scheme with adaptive time-stepping features and space multiresolution analysis, relying on dynamic accuracy estimates.

A splitting approach offers a reduced degree of computational complexity and thus straightforward implementations with respect to IMEX methods, which require additional stability and order conditions that combine all inner implicit-explicit schemes [17, 18, 19, 20]. However, appropriate criteria must be introduced to efficiently decouple the physical phenomena via splitting and to control the so-called splitting errors [21]. Splitting methods [22, 23] have been used in the literature for decades, and were widely implemented and exploited for combustion problems to overcome classical restrictions on computational resources (see, e.g., [24, 25, 26, 27, 28, 29, 30, 31]). A nice example is given by the numerical strategy developed by Knio *et al.* in [32, 33] for reactive flows in a low Mach formulation with detailed chemical kinetics and transport parameters. The splitting scheme introduced by these authors combines the dedicated stiff implicit multi-step VODE solver [34] for the chemical reaction term with a second order explicit RKC scheme [35, 36] for the diffusion problem. In this way, important gains of computational efficiency were achieved with a splitting time step not limited by the stiff reactive scales and set according to the extended stability domain of the RKC solver (convective stability constraints are less restrictive). Moreover, Day & Bell introduced in [37] another efficient low Mach solver with an operator splitting method coupled with an AMR (Adaptive Mesh Refinement) technique [38, 39]. The reaction problem was solved with VODE, whereas the convection-diffusion term was explicitly integrated on the adapted mesh with local CFL time steps set by the corresponding grid size [40, 41]. With these bases, further developments in terms of algorithm implementation and parallel computing techniques led to the effective simulation of three-dimensional turbulent premixed flames with detailed chemistry (see, e.g., [42, 43]), a remarkable achievement for laboratory-scale turbulent flames (see, e.g., [44, 45]).

Considering the state of art and these recent advances, one may note that splitting schemes favor the use of dedicated numerical solvers of different nature as well as straightforward coupling with other techniques, with important gains in computational efficiency. Nevertheless, there are some open issues related to the construction of splitting schemes and the interaction of splitting errors with those originating from the inner implicit-explicit solvers (the influence of the latter ones on the global integration error was numerically illustrated, for instance, in [32, 33]). Specifically, a critical matter underlined in the literature is the lack of precise criteria to properly choose the splitting time steps according to the physical decoupling capabilities of the problem and for a given accuracy. Another question is the extension of these strategies to highly dynamic problems for which neither a constant nor a stability-based variable splitting time step is adequate, taking into account that the explicit schemes are intended to handle the slow, non-stiff part of the equations.



To address these problems, we have first proposed in [46] a new approach in the design of splitting schemes for propagating waves modeled by stiff reaction-diffusion systems, in which the time integration errors were uniquely related to the splitting errors, even for large splitting time scales, based on mathematical analyses carried out mainly in [47, 48]. The underlying idea is to decouple time integration errors by choosing one-step and high-order dedicated methods with time-stepping features for the split subproblems, to independently handle and solve the corresponding physical-numerical time spectra, and such that the corresponding numerical errors remain negligible when compared with the splitting ones. The global error is then controlled by the splitting time step, defined according to the physical decoupling capabilities of the phenomenon and hence independently of standard stability constraints associated to mesh size or stiff source time scales. Additionally, the splitting scheme was coupled in [46] with a dynamic mesh refinement technique based on multiresolution (MR) analysis [49, 50, 51], previously restricted to non-stiff applications in the literature. For a given semi-discretized problem, the MR mathematical background allows a better monitoring of numerical errors introduced by the compressed spatial representations with respect to the original uniform grid discretization. Secondly, we have introduced in [52] a theoretical framework for stiff reaction-diffusion systems to dynamically select and adapt the splitting time step. The latter is based on local error estimates throughout the time integration in order to achieve a given controlled level of precision, even for very stiff problems.

The purpose of the present contribution is to carefully combine these two key ingredients and extend their applicability to a more complex level of modeling for convection-reaction-diffusion problems potentially modeling highly unsteady physical processes. The resulting solution scheme constitutes a fundamental building block for most combustion simulations. It provides an efficient algorithm in terms of both memory storage and computational efficiency, which allows multidimensional simulations assuring a given error tolerance, fixed in advance by the user. It is worth underlining that the purpose and challenge of the present contribution is to track and control the time integration errors as well as those originating from the compressed spatial representations for a given finest spatial resolution<sup>2</sup>. The latter should be able to capture the whole set of length scales present in the physical problem one wishes to solve. In this way, this paper introduces a novel algorithm which will yield accurate solution of convection-reaction-diffusion problems with a large number of degrees of freedom related to required fine space resolution, still on standard computing platforms before fully exploiting massively parallel architectures.

To assess the efficiency of the method in terms of error control and computational cost, we consider the numerical simulation of premixed and diffusion flames of interest in combustion applications. This study specifically considers laminar flames interacting with vortex structures including propagation of flame fronts and self-ignition processes of reactive mixtures. Hydrodynamics are decoupled from species and energy transport equations by adopting the standard thermo-diffusive approximation, so that the time-space resolution of the multi-scale reaction-diffusion-convection problem can be thoroughly evaluated. The latter aspects constitute the major development investment in terms of numerical schemes, as shown in [32, 37, 33], and a fundamental and validating first stage for the present tools, before considering more complex models or a complete low Mach number formulation.

---

<sup>2</sup>As explained also in [46], the goal is neither to propose a convergence analysis of the finite volume method when the finest mesh resolution is reduced nor an evaluation of spatial discretization errors, but to monitor numerical errors introduced by the adaptive meshing technique.

The paper is organized as follows. Section 2 defines the general flame/vortex interaction problem that will be solved numerically. Such flame vortex interactions were extensively investigated to describe fundamental combustion processes (see, e.g., [53, 54, 55, 56, 57, 58]), and they also have been examined in some clever experiments (see, e.g., [59, 60, 61, 62, 63, 64, 65]). An AMR technique was also recently coupled with a level-set method in [66] to describe flame/vortex interaction problems. Section 3 depicts the main features of the space-time adaptive technique. The mathematical formulation as well as two- and three-dimensional numerical simulations are reported in Section 4, for the propagation of premixed flames interacting with a counter-rotating vortex pair. New issues arise in Section 5 which concerns the numerical simulation of an ignition process while a reactive layer is being rolled-up in a vortex.

## 2. Laminar flames coupled with vortex structures

We consider in this study the numerical simulation of laminar flames interacting with vortex structures. For the sake of simplicity the chemistry is modeled by a global, single step, irreversible reaction given by



where  $\nu_k$ ,  $k = F, O, P$ , stand for the stoichiometric coefficients for the fuel F, the oxidizer O, and the combustion products P. The reaction rate is controlled by an Arrhenius law with a relatively high activation energy giving rise to thin reaction layers. The following standard modeling assumptions are also introduced throughout this study:

1. Mass diffusion velocities of chemical species are expressed by Fick's law.
2. Thermal diffusion of species (Soret-Dufour effect) is neglected.
3. Different species have constant and equal diffusion coefficients with respect to the mixture, noted  $D$ .
4. Constant pressure specific heats of all species are constant with the same value  $c_p$ .
5. Lewis numbers corresponding to all species are equal to one.
6. The rate of pressure change in time is negligible.
7. Density variations associated to chemical heat release are neglected.

The thermo-diffusive assumption 7 essentially decouples the velocity field computation from the determination of species mass fractions and temperature. Known solutions of the incompressible Navier-Stokes equations may then be imposed, and the problem is reduced to solving the following species and energy balance equations:

$$\left. \begin{aligned} \partial_t Y_k + \mathbf{v} \cdot \partial_x Y_k - D \partial_x^2 Y_k &= -\frac{\nu_k W_k}{\rho} \dot{w}, \\ \partial_t T + \mathbf{v} \cdot \partial_x T - D \partial_x^2 T &= \frac{\nu_F W_F Q}{\rho c_p} \dot{w}, \end{aligned} \right\} \quad (2)$$

with  $\mathbf{x} \in \mathbb{R}^d$ , where  $W_k$  is the molar mass and  $Y_k$ , the corresponding mass fraction for  $k = F, O, P$ . Variable  $T$  accounts for the temperature, and the reaction rate of progress  $\dot{w}$  is related to the rate of consumption of fuel  $\dot{w}_F$ , oxidizer  $\dot{w}_O$ , and products  $\dot{w}_P$  by  $\dot{w} = -(\dot{w}_F/\nu_F) = -(\dot{w}_O/\nu_O) = \dot{w}_P/\nu_P$ . The heat release per unit mass of fuel  $Q$  is defined by  $Q = h_F + (\nu_O W_O/\nu_F W_F)h_O - (\nu_P W_P/\nu_F W_F)h_P$ ,

where  $h_k$ ,  $k = F, O, P$ , is the corresponding species enthalpy. If one also considers a non-reacting diluent, noted by index N, the following equation must be included in (2):

$$\partial_t Y_N + \mathbf{v} \cdot \partial_x Y_N - D \partial_x^2 Y_N = 0. \quad (3)$$

Notice that by definition, the mass fractions verify that  $Y_F + Y_O + Y_P + Y_N = 1$ .

In the thermo-diffusive approximation the velocity field  $\mathbf{v}(x, t)$  is usually defined analytically and imposed into (2). Throughout this study we consider a two-dimensional viscous core vortex configuration, which features an azimuthal velocity of the form:

$$v_\theta(r, t) = \frac{\Gamma}{2\pi r} \left(1 - e^{-r^2/4\nu t}\right), \quad (4)$$

where  $\Gamma$  denotes the vortex circulation;  $r(x, y)$ , the distance to the vortex center; and  $\nu$ , the kinematic viscosity. This velocity field has a viscous core with a typical dimension of  $R_\nu \approx (\nu t)^{1/2}$ . Inside the core velocity increases in a quasi linear fashion as a function of the radial distance, and the fluid rotates like a solid body:

$$v_\theta(r, t) \approx \frac{\Gamma r}{8\pi\nu t}, \quad r < R_\nu. \quad (5)$$

A fast decay occurs immediately outside the core, and at large distances the flow tends to that of ideal line vortex:

$$v_\theta(r, t) \approx \frac{\Gamma}{2\pi r}, \quad r \gg R_\nu. \quad (6)$$

### 3. Time-space adaptive technique

For the reaction-diffusion-convection system defined by (2), we introduce a general time-space adaptive strategy: space adaptation is ensured by a multiresolution decomposition, whereas the time integration is performed by a dedicated splitting scheme with dynamic splitting time steps. The main idea of this splitting method is to apply high-order and one-step dedicated schemes to the reaction, diffusion, and convection subproblems, treated in an independent way [46]. Each solver is then intended to handle the fastest physical-numerical scales associated to each subsystem. The solution of the complete problem is finally reconstructed from the previous solutions according to the splitting scheme. Different multi-scale phenomena are thus considered separately during a splitting time step that is defined in order to achieve a prescribed numerical integration accuracy. This is enforced by using dynamic error estimates computed by an adaptive splitting scheme. These estimates measure the physical decoupling capabilities of the problem and settle the splitting time steps for a given accuracy [52]. Finally, the multiresolution analysis yields spatially adapted mesh representations with important gains in CPU time and memory usage.

A second order Strang scheme  $\mathcal{S}$  is considered for the general problem (2) [23]. The solution  $U(t + \Delta t)$  at time  $t + \Delta t$  is computed from the previous solution  $U(t)$  at  $t$  by

$$\mathcal{S}^{\Delta t} U(t) = \mathcal{R}^{\Delta t/2} \mathcal{D}^{\Delta t/2} \mathcal{C}^{\Delta t} \mathcal{D}^{\Delta t/2} \mathcal{R}^{\Delta t/2} U(t), \quad (7)$$

with  $U = (Y_F, Y_O, Y_P, Y_N, T)^T$ , and splitting time step  $\Delta t$ . The operators  $\mathcal{R}$ ,  $\mathcal{D}$ ,  $\mathcal{C}$  correspond, respectively, to the numerical integration of the reaction, diffusion, and convection problems, performed independently and successively in the order indicated in (7). Adaptive time stepping

is considered for all three operators yielding variable reaction ( $\Delta t_{R1}$  and  $\Delta t_{R2}$ ), diffusion ( $\Delta t_{D1}$  and  $\Delta t_{D2}$ ), and convection ( $\Delta t_C$ ) substeps, within the corresponding splitting time steps ( $\Delta t/2$  or  $\Delta t$ ). Moreover, the reaction is described by spatially decoupled systems of ODEs, solved independently point by point with different time steps according to the local reactive intensity.

According to the adaptive splitting method introduced in [52], we also compute the embedded and lower order shifted-Strang splitting scheme:

$$\tilde{\mathcal{S}}^{\Delta t} U(t) = \mathcal{R}^{(1/2-\delta)\Delta t} \mathcal{D}^{\Delta t/2} \mathcal{C}^{\Delta t} \mathcal{D}^{\Delta t/2} \mathcal{R}^{(1/2+\delta)\Delta t} U(t), \quad (8)$$

where the  $\delta$  parameter is defined such that the local error estimate  $err = \|\mathcal{S}^{\Delta t} U(t) - \tilde{\mathcal{S}}^{\Delta t} U(t)\|_{L^2}$  remains valid even for large splitting time steps [52]. Both solutions (7) and (8) have the first reactive half-step in common, and the following operators are applied simultaneously to both intermediate solutions:  $(\mathcal{R}^{\Delta t/2} U(t), \mathcal{R}^{(1/2+\delta)\Delta t} U(t))^T$ , by putting them together as if one were solving a set of variables of twice the original number. The splitting time steps are then dynamically computed by

$$\Delta t^{\text{new}} = \nu \Delta t \sqrt{\frac{\eta}{\|\mathcal{S}^{\Delta t} U(t) - \tilde{\mathcal{S}}^{\Delta t} U(t)\|_{L^2}}}, \quad (9)$$

in order to ensure a prescribed accuracy  $\eta$  for each splitting solution (7). A safety factor is also considered:  $0 < \nu \leq 1$ , close to 1 ( $\nu = 0.9$  in this study). The solution (7) at  $t + \Delta t$  is accepted if  $err < \eta$ , and the integration proceeds with  $\Delta t = \Delta t^{\text{new}}$ , according to (9). Otherwise it is rejected and computed once again with the new splitting time step  $\Delta t^{\text{new}}$ .

The reaction and diffusion problems are solved, respectively, by the dedicated high-order one-step solvers: Radau5 and ROCK4, as in [46]. Radau5 [67] is a fifth order implicit Runge-Kutta method exhibiting  $A$ - and  $L$ -stability properties to efficiently solve stiff systems of ODEs, whereas the ROCK4 scheme [68] is formally a fourth order stabilized explicit Runge-Kutta method with extended stability domain along the negative real axis, well suited to numerically treat mildly stiff parabolic operators. Both methods implement adaptive time stepping techniques to guarantee computations within a prescribed accuracy tolerance,  $\eta_{\text{Radau5}}$  and  $\eta_{\text{ROCK4}}$ , set in this case smaller than the splitting tolerance  $\eta$ :  $(\eta_{\text{Radau5}}, \eta_{\text{ROCK4}}) < \eta$ . Similarly, an explicit high-order in time and space, one-step monotonicity preserving scheme: OSMP, developed by [69], is implemented as the convective scheme. It combines monotonicity preserving (MP) constraints for non-monotone data to avoid extrema clipping, with TVD features to prevent spurious oscillations around discontinuities or sharp spatial gradients. Considering its explicit character, standard CFL stability restrictions are imposed to substeps  $\Delta t_C$  within each splitting time step  $\Delta t$ . One may note that for stiff PDEs in splitting configurations, an important loss in efficiency is expected with stiff multi-step solvers like VODE or LSODE [70], mainly because of the expensive and less accurate starting procedure of multi-step schemes at each splitting time step, as demonstrated, for instance, in [71].

Although the dynamic step size selection is made within a prescribed accuracy tolerance for Radau5 and ROCK4, this is not currently the case for the convective scheme for which time stepping is based only on stability constraints. As indicated in [46] and also in previous works (see, e.g., [33]), the attention was focused on the numerical solution of stiff reaction-diffusion systems. Hence we have extended the numerical strategy to reaction-diffusion-convection problems in which the main constraint for the convective term is given by the small time steps resulting from stability conditions related to fine spatial discretizations. In this context, the convective scheme must be at least of second order so that the numerical errors of the convection problem also remain negligible with respect to the splitting errors.

A Strang dimensional splitting [23] is implemented for the convective scheme to handle multi-dimensional configurations:

$$\mathcal{C}^{\Delta t_C} U(t) = \mathcal{C}_x^{\Delta t_C/2} \mathcal{C}_y^{\Delta t_C/2} \mathcal{C}_z^{\Delta t_C} \mathcal{C}_y^{\Delta t_C/2} \mathcal{C}_x^{\Delta t_C/2} U(t), \quad (10)$$

where the convection steps  $\Delta t_C$  are limited by the stability restrictions of the numerical scheme. This splitting procedure allows integrations with the theoretically right accuracy and easily ensures multi-dimensional MP/TVD constraints [69]. The stability constraint is given by a standard CFL condition (inversely proportional to the finest spatial grid among all dimensions), and thus a better solution considers rather

$$\mathcal{C}^{2\Delta t_C} U(t) = \mathcal{C}_x^{\Delta t_C} \mathcal{C}_y^{\Delta t_C} \mathcal{C}_z^{\Delta t_C} \mathcal{C}_z^{\Delta t_C} \mathcal{C}_y^{\Delta t_C} \mathcal{C}_x^{\Delta t_C} U(t), \quad (11)$$

instead of (10), to better ensure the same numerical diffusion in all three directions and to preserve the isotropy of the computations. Furthermore, at each time step  $\Delta t_C$  we need to perform three steps in (11) to advance the solution, instead of five in (10). In the splitting scheme (7), the operator  $\mathcal{C}$  is thus given by

$$\mathcal{C}^{\Delta t} = \prod_{i=1}^{I_C} \mathcal{C}^{2\Delta t_{C,i}}, \quad (12)$$

such that  $2I_C$  convection steps  $\Delta t_{C,i}$  are performed within the global splitting step  $\Delta t$ , and formula (11) is recast as

$$\mathcal{C}^{2\Delta t_{C,i}} = \mathcal{C}_x^{\Delta t_{C,i}} \mathcal{C}_y^{\Delta t_{C,i}} \mathcal{C}_z^{\Delta t_{C,i}} \mathcal{C}_z^{\Delta t_{C,i}} \mathcal{C}_y^{\Delta t_{C,i}} \mathcal{C}_x^{\Delta t_{C,i}}. \quad (13)$$

The intermediate time step  $\Delta t_{C,i}$  is the same for all points over the computational domain, and it is given by

$$\Delta t_{C,i} = \min \left( \Delta t_{C,i}^{\max}, \frac{\Delta t}{2} - \sum_{i'=1}^{i-1} \Delta t_{C,i'} \right), \quad (14)$$

where  $\Delta t_{C,i}^{\max}$  is the current maximum convection time step within the stability domain of the numerical scheme. The previous procedure is general and remains valid for any convective scheme and for both linear and nonlinear transport problems, with time- or space-varying transport velocities.

A fully adaptive multiresolution technique based on [50] is then coupled with the previous dedicated time adaptive operator splitting strategy. In this way, considering a finite volume discretization for problem (2) on a fine grid  $S_J$ , the latter defines a set of dyadic nested meshes  $S_j$  on which problem (2) can be represented, for  $j = 0, 1, \dots, J$ , from the coarsest to the finest grid. We denote by  $\mathbf{U}_{split}^J$  the numerical solution of the semi-discretized problem associated to system (2), computed at some time  $t$  by the time adaptive splitting scheme (7) on the uniform grid  $S_J$ . Additionally,  $\mathbf{U}_{split}^{MR}$  corresponds to the solution obtained with the proposed time-space adaptive scheme also using (7) this time on a dynamic adaptive mesh generated by multiresolution analysis. Based on the multiresolution mathematical background [50], the following holds

$$\|\mathbf{U}_{split}^{MR} - \mathbf{U}_{split}^J\|_{L^2} \leq C\varepsilon, \quad (15)$$

for some positive  $C$ , where  $\varepsilon$  is a threshold parameter that sets the accuracy of the spatially adapted representations. Smaller  $\varepsilon$  implies more refined (less compressed) and hence more accurate solutions. Even though a rigorous mathematical proof of (15) is not yet available for parabolic problems, this property was already checked numerically (see, e.g., [72, 73, 46]).

The numerical accuracy of the simulations is then monitored by

$$\|\mathbf{U}_{qe}^J - \mathbf{U}_{split}^{MR}\|_{L^2} \leq \underbrace{\|\mathbf{U}_{qe}^J - \mathbf{U}_{split}^J\|_{L^2}}_{O(\eta)} + \underbrace{\|\mathbf{U}_{split}^J - \mathbf{U}_{split}^{MR}\|_{L^2}}_{O(\varepsilon)}, \quad (16)$$

where  $\mathbf{U}_{qe}^J$  corresponds to a reference quasi-exact solution of the fully coupled reaction-diffusive-convection problem (2), discretized on the uniform grid  $S_J$ . Notice that the latter solution is usually not available or too expensive to compute. Considering (16), the first term in the right-hand side stands for the splitting errors, i.e., the time integration errors; whereas the second one, for the space adaptive multiresolution procedure. The spatial discretization errors, which are in practice difficult to evaluate unless an analytical solution is known, are therefore not included in (16) and are settled by the order of discretization of the spatial operators and by the mesh size of  $S_J$ , which in turn is limited by the available computational resources. In this application, second and third order spatial discretizations were considered for the diffusion and convection subsystems, respectively, in (2).

#### 4. Propagation of premixed flames

In the framework of problem (2) that models laminar flames interacting with vortices, one may first study the performance of the proposed numerical strategy for the simulation of premixed flames in two- and three-dimensional configurations. The model under consideration is borrowed from a configuration investigated by Laverdant & Candel in [74]. Some of these results were previously announced in [75], in a more general context without any detailed analysis.

##### 4.1. Model formulation

We consider a square computational domain where a mixture of fuel and oxidizer lies in the lower half-plane, while products occupy the upper half-plane. Fast but finite rate kinetics give rise to, a thin premixed laminar flame initially located at the mid-plane. The reaction rate is modeled by the following Arrhenius equation [74]:

$$\dot{w} = \frac{B_1}{W_O W_F} \rho^2 Y_O Y_F T^2 e^{-T_a/T}, \quad (17)$$

where  $B_1$  is a pre-exponential factor and  $T_a$ , the activation energy. For premixed laminar flames, the mixture may be assumed to be fuel lean with a high diluent concentration. Hence the reaction rate is controlled by the fuel mass concentration, whereas the oxidizer mass fraction is nearly constant and equal to its upstream value,  $Y_O = Y_{O_o}$ . Therefore, (17) becomes

$$\dot{w} = \frac{B_1}{W_O W_F} \rho^2 Y_{O_o} Y_F T^2 e^{-T_a/T}. \quad (18)$$

Subscripts  $( )_o$ ,  $( )_b$ , and  $( )_\star$  respectively indicate, fresh mixture zone, burnt product zone, and dimensionless variables.

The variation of the ratios  $\rho_o/\rho_b$  is assumed negligible because the pressure is essentially constant according to hypothesis 6. With these hypotheses, the composite Schvab-Zeldo'vich variable:

$$\theta_Z = T + \frac{Q}{c_p} Y_F, \quad (19)$$

verifies a time dependent equation of type (2) without source term like (3), whereas from a simple energy balance relation in an adiabatic framework, we get

$$c_p(T_b - T_o) = Q(Y_{Fo} - Y_{Fb}). \quad (20)$$

By evaluating  $\theta_{Z_o}$  and  $\theta_{Z_b}$  in (19) and from (20), it can be seen that  $\theta_Z$  is constant throughout the flame. Consequently, a progress variable  $c(x, y, t)$  can be introduced:

$$c = \frac{T - T_o}{T_b - T_o} = \frac{Y_{Fo} - Y_F}{Y_{Fo} - Y_{Fb}}. \quad (21)$$

Defining  $\tau = T_b/T_o - 1$ , we obtain that  $T/T_o = 1 + \tau c$  and the reaction rate (18) becomes

$$\dot{w} = B_\star Y_{Fo} (1 - c) e^{-T_a/(T_o(1+\tau c))}, \quad (22)$$

taking into account that  $Y_{Fb} = 0$  into (21), with

$$B_\star = \frac{B_1}{W_O W_F} \rho_o^2 Y_{O_o} T_o^2. \quad (23)$$

Hence for the fuel mass fraction equation in (2), one now has

$$\partial_t Y_F + v_x \partial_x Y_F + v_y \partial_y Y_F - D (\partial_x^2 Y_F + \partial_y^2 Y_F) = -\frac{B_\star}{\rho_o} Y_{Fo} (1 - c) e^{-T_a/(T_o(1+\tau c))}, \quad (24)$$

which may be written as

$$\partial_t c + v_x \partial_x c + v_y \partial_y c - D (\partial_x^2 c + \partial_y^2 c) = \frac{B_\star}{\rho_o} (1 - c) e^{-T_a/(T_o(1+\tau c))}. \quad (25)$$

Considering a square computational domain of size  $2L$ , a characteristic diffusion time  $\tau_d = L^2/D$ , and a velocity  $V = D/L$ , one may define the following dimensionless variables:

$$x_\star = \frac{x}{L}, \quad y_\star = \frac{y}{L}, \quad v_{x,\star} = \frac{v_x}{V}, \quad v_{y,\star} = \frac{v_y}{V}, \quad t_\star = \frac{t}{\tau_d}. \quad (26)$$

We finally obtain [74]:

$$\partial_{t_\star} c + v_{x,\star} \partial_{x_\star} c + v_{y,\star} \partial_{y_\star} c - (\partial_{x_\star}^2 c + \partial_{y_\star}^2 c) = \text{Da} (1 - c) e^{-T_a/(T_o(1+\tau c))}, \quad (27)$$

where  $\text{Da} = B_\star \tau_d / \rho_o = \tau_d / \tau_{ch}$  is a Damköhler number and  $\tau_{ch} = B_\star / \rho_o$ , a chemical time.

The dimensionless tangential velocity induced by the viscous core vortex (4) becomes

$$v_{\theta,\star}(r_\star, t_\star) = \frac{\text{Re Sc}}{r_\star} (1 - e^{-r_\star^2/(4 \text{Sc} t_\star)}), \quad (28)$$

where the Reynolds and Schmidt numbers are defined by

$$\text{Re} = \frac{\Gamma}{2\pi\nu}, \quad \text{Sc} = \frac{\nu}{D}. \quad (29)$$

In cartesian coordinates, the velocity is given by

$$v_{x,\star} = \left( \frac{y_\star - y_{0,\star}}{r_\star} \right) v_{\theta,\star}, \quad v_{y,\star} = -\left( \frac{x_\star - x_{0,\star}}{r_\star} \right) v_{\theta,\star}, \quad (30)$$

for a counter-clockwise rotating vortex with radius

$$r_\star^2 = (x_\star - x_{0,\star})^2 + (y_\star - y_{0,\star})^2, \quad (31)$$

where  $(x_{0,\star}, y_{0,\star})$  is the center of the vortex.

#### 4.2. Numerical simulations: two-dimensional configuration

In this application we consider two dynamic counter-rotating vortices, each one modeled by (28), interacting with a premixed flame governed by (27) in a two-dimensional computational domain. All the simulations presented in this work have been performed on an AMD Shanghai 2.7 GHz processor with a memory capacity of 32 GB.

##### 4.2.1. Data initialization and simulation parameters

We solve problem (27) with Neumann homogeneous boundary conditions in a two-dimensional computational dimensionless domain of  $[-1, 1]^2$ , i.e.,  $L = 1$  in (26). The initial condition corresponds to a premixed flame in the limit of large activation energy [74]:

$$c = \begin{cases} e^{(y_\star - y_{0,\star})/\Delta_\star}, & y_\star \leq y_{0,\star}, \\ 1, & y_\star > y_{0,\star}, \end{cases} \quad (32)$$

where  $\Delta_\star$  is the preheat zone thickness. The modeling parameters appearing in equations (27), (28), and (32) are as follows:  $Da = 2.5 \times 10^9$ ,  $T_a = 20000$  K,  $T_o = 300$  K,  $\tau = 6.72$ ,  $Re = 1000$ ,  $Sc = 1$ , and  $\Delta_\star = 0.02$ . The velocity field is given by the superposition of two vortices with opposite signs in (30), centered at  $(-0.25, -0.5)$  for the counter-clockwise vortex, and at  $(0.25, -0.5)$  for the clockwise one. We thus take  $y_{0,\star} = -0.5$  into (32). Velocities as well as the maximum time step  $\Delta t_{C,i}^{\max}$  are computed before each time integration of the convection problem and updated after two time steps  $\Delta t_{C,i}$  according to (12).

The adaptive splitting accuracy tolerance in (9) is set to  $\eta = 10^{-3}$ , unless noted otherwise, with  $\eta_{ROCK4} = 10^{-5}$  and  $\eta_{Radau5} = 10^{-7}$  for the ROCK4 and Radau5 solvers. The third order OSMP scheme is employed for the convection problem with a stability CFL condition equal to 1. In the computations, the shifting parameter  $\delta$  for the lower order Strang scheme (8) is taken as a constant and sufficiently large value<sup>3</sup> of 0.05. Regarding (9), the following constraint was additionally considered for the dynamic computation of the splitting time steps:

$$\Delta t^{\text{new}} = \min \left( \alpha_1 \Delta t, \nu \Delta t \sqrt{\frac{\eta}{\|\mathcal{S}^{\Delta t} U(t) - \widetilde{\mathcal{S}}^{\Delta t} U(t)\|_{L^2}}} \right), \quad (33)$$

with  $\alpha_1$  equal to 1.5. This procedure is implemented to avoid large variations of time integration steps, taking also into account that the adapted grid is fixed during each time step. The time domain of integration is given by  $t_\star$  into  $[0, 4 \times 10^{-3}]$ . For the multiresolution analysis,  $\varepsilon = 10^{-2}$  and  $\varepsilon = 10^{-3}$  are chosen as multiresolution threshold values in the following illustrations. (We shall discuss and analyze later on the choice of the tolerance parameters, in particular in §5) The finest grid corresponds to a spatial discretization of  $1024^2$  points, i.e.,  $J = 10$  as finest grid level.

##### 4.2.2. Characterization of the numerical performance of the method

According to the definition of the progress variable  $c$  in (21), the fresh mixture is given by  $c = 0$ , whereas  $c = 1$  corresponds to the burnt gases. Starting from the planar premixed flame (32) at  $y_\star = -0.5$ , with fresh gases in the lower part (blue zone in the figure), Figure 1 (top) shows the time evolution of  $c$  and the interaction of the two imposed vortices with the flame

<sup>3</sup>It was shown in [52] that large values of  $\delta$  (noted  $\varepsilon$  in [52]) will in general extend the valid working region of the adaptive splitting technique, i.e., local error estimates  $err$  should remain valid for larger splitting time steps.



front. The velocity field generated by the vortices is shown in Figure 2 (left), and is characterized by high values with localized strong gradients for the selected value of vortex Reynolds number of  $Re = 1000$ . As a consequence, the fresh mixture is drawn up towards the hot region (red zone in Figure 1 (top)) in the center region, at a rate which is much faster than the normal burning velocity of the reaction front, whereas hot gases propagate faster in the outer zones around the vortex cores.

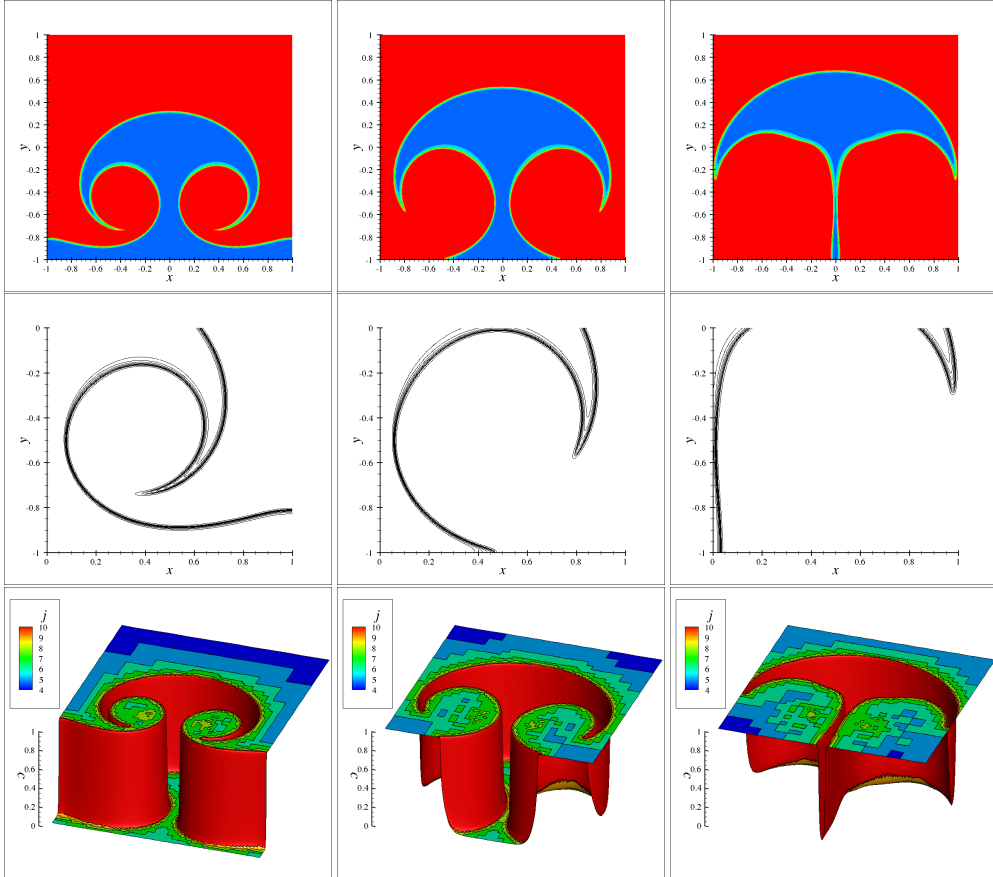


Figure 1: Two-dimensional propagating flame. Time evolution of progress variable  $c$  at  $t_* = 5 \times 10^{-4}$  (left),  $10^{-3}$  (center), and  $1.5 \times 10^{-3}$  (right). Top: red (resp., blue) zone corresponds to burnt (resp., fresh) gases,  $c = 1$  (resp.,  $c = 0$ ). Middle: contour lines with  $c = 0 - 0.99$  and  $\Delta c = 0.11$ . Bottom: dynamic adapted grid corresponding to  $1024^2$  points at the finest level  $J = 10$  with  $\varepsilon = 10^{-3}$ .

The contour lines in Figure 1 (middle) account for the spatial thickness of the flame in which fresh gases react and burn, and where an important numerical effort is usually required to precisely describe the phenomenon. In this configuration the flame thickness is reduced from about 0.05 in the standard planar configuration, to approximately 0.025 in regions where the flame surface is strained by the locally high velocity gradients, as shown in Figure 2 (left). A spatial mesh of  $1024^2$  points involves approximately 10 discretization points throughout the flame

front, and generates a reasonably good numerical representation of the problem. From a numerical point of view, the latter issue imposes a fine spatial discretization for a localized structure 100 times smaller than the global scale of the computational domain, and naturally justifies an adaptive mesh refinement technique. Figure 1 (bottom) shows the corresponding adapted grids. The representation involves 7 levels of different spatial discretization where the finest regions coincide with the propagating front. The data compressions DC illustrated in Figure 2 (right) are defined as 1 minus the ratio between the number of cells on the adapted grid AG and those on the finest uniform grid FG ( $1024^2$  in this case), expressing the whole as a percentage:

$$DC = \left(1 - \frac{AG}{FG}\right) \times 100. \quad (34)$$

For  $\varepsilon = 10^{-2}$  and  $\varepsilon = 10^{-3}$ , no more than, respectively, 10 % or 15 % of the  $1024^2$  points are necessary to represent the flame front within the prescribed tolerance.

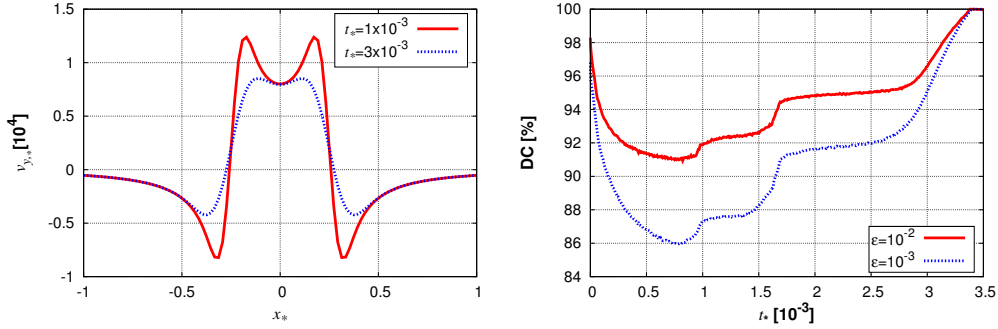


Figure 2: Two-dimensional propagating flame. Left: velocity  $v_{y,*}$  at  $y_* = -0.5$ , at  $t_* = 10^{-3}$  and  $t_* = 3 \times 10^{-3}$ . Right: time evolution of data compressions DC for  $\varepsilon = 10^{-2}$  and  $\varepsilon = 10^{-3}$ .

In order to verify that the accuracy of the computations is settled by the accuracy tolerances, one may define for problem (27), discretized on a uniform mesh of  $1024^2$ :

- A *quasi-exact* reference solution  $\mathbf{c}_{qe}^J$ , obtained with the Strang scheme (7) with a small and constant splitting time step of  $\Delta t = 10^{-7}$ ;
- The *splitting* solution  $\mathbf{c}_{split}^J$  is now obtained with the adaptive splitting scheme (7), with (33) and accuracy tolerance of  $\eta = 10^{-3}$ , computed also on the uniform grid; and
- The *time-space adaptive* solution  $\mathbf{c}_{split}^{MR}$ , composed of the adaptive splitting technique and the multiresolution representation with a spatial resolution equivalent to  $1024^2$  points in the finest grid level  $J = 10$ .

Defining also the numerical errors following (16):

$$E_{split}^J = \|\mathbf{c}_{qe}^J - \mathbf{c}_{split}^J\|_{L^2}, \quad E_{MR}^J = \|\mathbf{c}_{split}^J - \mathbf{c}_{split}^{MR}\|_{L^2}, \quad E_{split}^{MR} = \|\mathbf{c}_{qe}^J - \mathbf{c}_{split}^{MR}\|_{L^2}, \quad (35)$$

corresponding, respectively, to the time adaptive splitting, space adaptive multiresolution, and time-space adaptive approximations, the following Table 1 summarizes these errors where the

solutions on adapted grids  $\mathbf{c}_{split}^{MR}$ , were reconstructed on the finest grid only to compute the errors. With this choice of parameters, it is observed that the global accuracy of the numerical strategy  $E_{split}^{MR}$  is ruled by the time integration approximation error  $E_{split}^J$ , which is related to the local error tolerance  $\eta$ . The latter global error will remain practically independent of the multiresolution errors  $E_{MR}^J$  as seen in Table 1, for these and smaller threshold values. Notice however that a thresholding  $\varepsilon$  of  $10^{-2}$  yields errors of  $\mathcal{O}(10^{-3})$ , and hence a better performance than expected. The latter is nevertheless a problem dependent feature and a safer choice generally would be to set  $\varepsilon$  equal to  $\eta$  at most, in order to guarantee sufficiently accurate spatial representations for the numerical time integration of the problem. Concerning the multiresolution errors, the proportionality with respect to  $\varepsilon$  is roughly verified, taking into account the improved accuracy for  $\varepsilon = 10^{-2}$ , as previously noted. In this way we observe a good behavior of the method in terms of control of the numerical accuracy; a more detailed analysis is nevertheless postponed to §5.2.3 for a more complex configuration.

Table 1:  $L^2$  numerical errors for the time adaptive splitting ( $E_{split}^J$ ), space adaptive multiresolution ( $E_{MR}^J$ ), and time-space adaptive ( $E_{split}^{MR}$ ) strategies evaluated at different times. Finest grid:  $1024^2$ .

$t_\star$ [ $10^{-3}$ ]	$E_{split}^J$ [ $10^{-2}$ ]	$E_{MR}^J$ [ $10^{-3}$ ]		$E_{split}^{MR}$ [ $10^{-2}$ ]	
		$\varepsilon = 10^{-2}$	$\varepsilon = 10^{-3}$	$\varepsilon = 10^{-2}$	$\varepsilon = 10^{-3}$
0.5	1.45	5.28	1.79	1.14	1.16
1.0	2.71	6.36	1.69	2.17	2.28
1.5	4.74	7.37	3.12	4.14	4.34
2.0	5.74	7.05	3.47	5.21	5.44

Table 2: CPU time in minutes for the time-space adaptive, the time adaptive splitting, and the quasi-exact strategies for  $t_\star$  into  $[0, 2 \times 10^{-3}]$ . Finest grid:  $1024^2$ .

	MR-splitting $\varepsilon =$		splitting	quasi-exact
	$10^{-2}$	$10^{-3}$		
CPU time (min.)	56.27	71.05	589.00	6603.26

Table 2 includes the CPU times for half the time domain of study:  $t_\star$  into  $[0, 2 \times 10^{-3}]$ , taking into account that the reference quasi-exact solution is expensive to compute. The splitting CPU time accounts for the cost reduction with respect to the quasi-exact solution that considers a small time step of the order of the fastest numerical scale (the convective CFL constraint in this case). Notice that more effective strategies could be implemented to obtain the coupled reference solution, and the previous values should be taken as one possible numerical indicator. Additionally, the CPU times related to the time-space adaptive technique account for the gain issued from the compressed data representation, if one compares them with the splitting CPU time. In this case these gains are coherent with the corresponding data compressions achieved with each threshold value in Figure 2 (right), for instance, about 90 % and 88 % for a threshold

value  $\varepsilon$  of, respectively,  $10^{-2}$  and  $10^{-3}$ . The total CPU time for the time-space adaptive technique for the whole time domain of study  $[0, 4 \times 10^{-3}]$  was about 80.73 and 98.38 minutes for  $\varepsilon = 10^{-2}$  and  $\varepsilon = 10^{-3}$ , respectively.

Finally, Figure 3 illustrates the adaptive time steps considered in this problem. The splitting time steps are practically the same for both multiresolution tolerances. This indicates an appropriate spatial representation of the propagating fronts on the corresponding adapted meshes for the given set of tolerances ( $\eta$  and  $\varepsilon$ ), considering that the time integration is performed on an adapted but fixed grid. Otherwise, any deficiency would be reflected by the local error estimates, and thus by the splitting time steps issued from the time adaptive scheme. An initial value of  $\Delta t = 10^{-8}$  was chosen in order to cope with the sudden appearance of the velocity field with very high maximum values of about  $4 \times 10^5$ , with  $\text{Re} = 1000$  into (28). Additionally it can be observed that the introduction of (33) to limit the growth of the splitting time steps yields a smooth evolution of the time stepping, and furthermore ensures an appropriate spatial representation of this particular initialization with a highly varying velocity field during the transient phase. Taking into account that the global physics is controlled by the propagation of the flame, the splitting time steps evolve until a practically constant value of  $\Delta t \approx 10^{-5}$ . Nevertheless, time adaptation is needed to handle fast variations in the beginning of the process, and for the final total combustion of the fresh gases at some unknown time. In this configuration, all gases are burnt by  $t_* = 3.5 \times 10^{-3}$ . The disclosed behavior of the time stepping procedure thus follows the physics of this particular problem and moreover justifies the choice of a constant shift parameter  $\delta$ . However in a general situation, the dynamic evaluation of  $\delta$ , as described in [52], should be included.

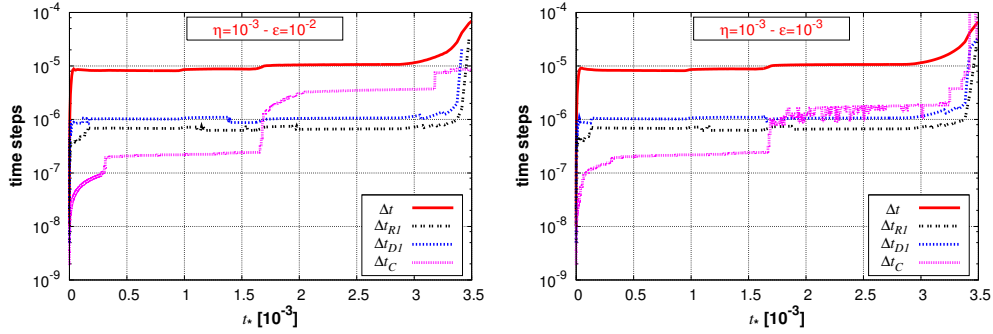


Figure 3: Two-dimensional propagating flame. Time evolution of the splitting time step  $\Delta t$ , the reactive  $\Delta t_{R1}$  and diffusive  $\Delta t_{D1}$  substeps during the first splitting half-step, and the convective ones  $\Delta t_C$  according to the Strang scheme (7) with tolerances  $\eta = 10^{-3}$  and  $\varepsilon = 10^{-2}$  (left) or  $\varepsilon = 10^{-3}$  (right).

Figure 3 also shows that an important decoupling of time scales is possible, where the splitting time step  $\Delta t$  is globally at least 10 times larger than the inner integration steps for the split reaction, diffusion, and convection problems. This naturally yields important gains of computational efficiency, always within a prescribed accuracy. The reaction and diffusion time steps are dynamically set based on the accuracy tolerances  $\eta_{Radau5}$  and  $\eta_{ROCK4}$ , and for each half splitting time step we represent in Figure 3 the averaged values of the inner reaction and diffusion substeps in order to obtain clearer representations. Reaction steps are of the order of  $\Delta t_R \approx 7 \times 10^{-7}$  at the flame front (shown in Figure 3), and they progressively increase up to  $\Delta t_R = \Delta t/2$  away

from the highly reacting area. Diffusion time steps are of the order of  $\Delta t_D \approx 10^{-6}$ . The reaction and diffusion substeps corresponding to the second splitting half-step (not represented in Figure 3) behave qualitatively similar to those during the first half-step. The convection time steps are computed by (14), based on the maximum stability time steps  $\Delta t_{C,i}^{\max}$ , which are illustrated in Figure 3. This convective step ranges from  $\Delta t_C \approx 2 \times 10^{-9}$  in the beginning to  $\Delta t_C \approx 2 \times 10^{-7}$  and then  $\Delta t_C \approx 5 \times 10^{-6}$ , due mainly to the constraining high Reynolds number considered.

#### 4.3. Numerical simulations: three-dimensional configuration

The time-space adaptive technique is easily extended to three-dimensional configurations. In order to illustrate this, we consider the solution of (27) over a dimensionless computational domain of  $[-1, 1]^3$ .

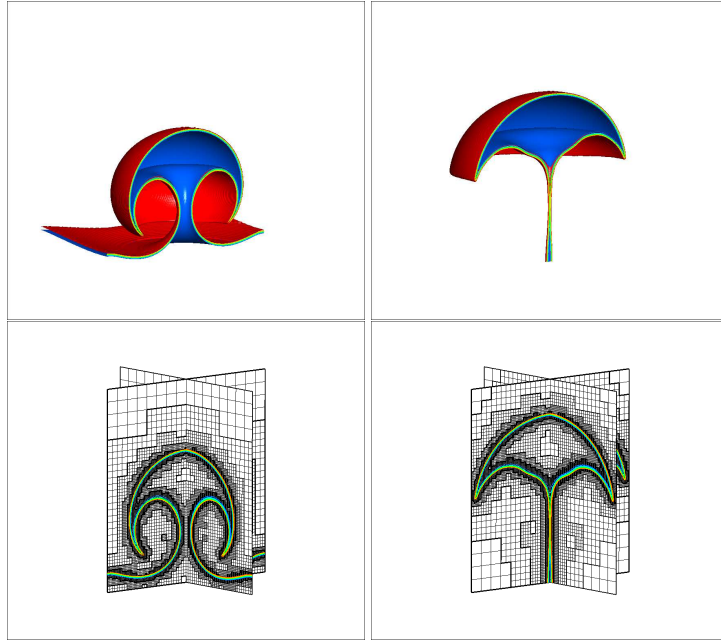


Figure 4: Three-dimensional propagating flame. Time evolution of progress variable  $c$  at  $t_\star = 5 \times 10^{-4}$  (left) and  $1.5 \times 10^{-3}$  (right). Top: isosurfaces for  $c$  equal to 0.01 (blue) and 0.99 (red). Bottom: dynamic adapted grids (right) corresponding to  $256^3$  points at the finest level  $J = 8$ . Contour lines with  $c = 0.01 - 0.91$  and  $\Delta c = 0.3$ .

The same data initialization is considered with, respectively,  $z_\star$  and  $z_{0,\star}$ , instead of  $y_\star$  and  $y_{0,\star}$  in (32), as well as the same previous modeling parameters. The adaptive splitting accuracy tolerance in (9) is also set to  $\eta = 10^{-3}$ , with  $\eta_{ROCK4} = 10^{-5}$ ,  $\eta_{Radau5} = 10^{-7}$ , and  $\varepsilon = 10^{-2}$  for the multiresolution threshold value, following the previous two-dimensional results. The time domain of integration is given by  $t_\star$  into  $[0, 3.5 \times 10^{-3}]$ , whereas the finest grid corresponds to a spatial discretization of  $256^3$  points, i.e.,  $J = 8$  as finest grid level. The three-dimensional velocity field is defined by a toroidal vortex directly deduced from the previous two-dimensional velocity field. In each plane containing the  $z$ -axis, we consider thus a pair of counter-rotating

vortices computed as usual with (28) where the radius is defined by

$$r_{\star}^2 = (x_{\star} - x_{0,\star})^2 + (y_{\star} - y_{0,\star})^2 + (z_{\star} - z_{0,\star})^2, \quad (36)$$

centered at  $(x_{0,\star}^2 + y_{0,\star}^2)^{1/2} = 0.25$ , and with  $z_{0,\star} = -0.5$ . Although the resulting field is not divergence free, it suffices to construct a three-dimensional configuration to illustrate the numerical capabilities of the method. The same simulations can be performed exactly in the same way with more physically consistent velocity fields. Figure 4 shows the interaction of the initial premixed flame with the toroidal vortex, and the corresponding adapted grids on which the solutions are computed.

Figure 5 shows the corresponding time steps of integration. We retrieve a qualitatively similar behavior with respect to the previous two-dimensional case, in terms of splitting time steps and the time stepping for each split subproblem. The fresh gases are completely burnt at a time  $t_{\star} = 3 \times 10^{-3}$ . Considering the obtained data compression, no more than 18 % of the  $256^3$  points are required. This simulation took approximatively 17.26 hours of CPU time.

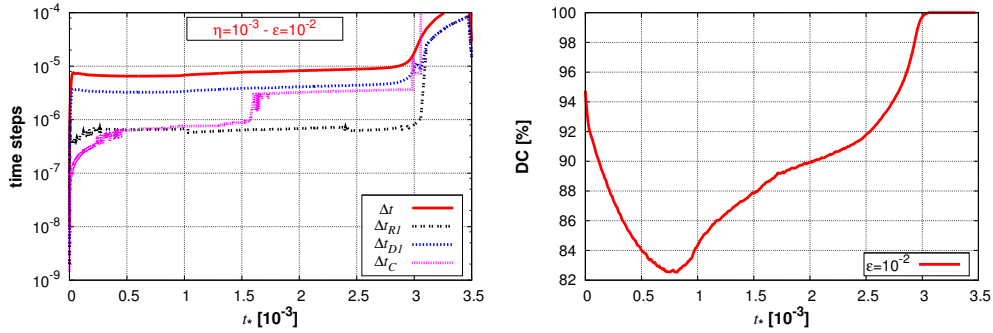


Figure 5: Three-dimensional propagating flame. Left: time evolution of the splitting time step  $\Delta t$ , the reactive  $\Delta t_{R1}$  and diffusive  $\Delta t_{D1}$  substeps during the first splitting half-step, and the convective ones  $\Delta t_C$  with tolerances  $\eta = 10^{-3}$  and  $\varepsilon = 10^{-2}$ . Right: time evolution of data compressions DC with  $\varepsilon = 10^{-2}$ .

## 5. Ignition of diffusion flames

In this section, we investigate the ignition dynamics of a diffusion flame interacting with a vortex. The mathematical model was envisaged by Thévenin & Candel in [76]. In what follows we consider several physical configurations investigated in [76] and conduct a both qualitative and quantitative study on the performance of the present time-space adaptive method. Some preliminary results on one particular configuration were recently described in [77].

### 5.1. Model formulation

Let us consider a two-dimensional computational domain where pure and fresh hydrogen with mass fraction  $Y_{F,0}$  at temperature  $T_{F,0}$  initially occupies the upper half part while the remaining lower part of the domain is occupied by hot air at  $T_{O,0}$  with an oxidizer mass fraction  $Y_{O,0}$ . A single vortex modeled by (4) and centered on the planar interface between the two media,

is then introduced to transport and mix both reactants. The dynamics of this system are described by the general set of equations (2) with (3), where the reaction rate is modeled by

$$\dot{w} = \frac{\rho^2}{\nu_F W_F} A Y_O Y_F e^{(-T_a/T)}, \quad (37)$$

in which  $A$  is a pre-exponential factor and  $T_a$ , the activation energy.

One may construct Schvab-Zeldovich variables by combining the reacting species mass fractions with proper coefficients, to obtain a balance equation without source term, analogous to the equation (3) governing  $Y_N$ . Thus, introducing the reduced total heat released  $\chi$ ; the normalized temperature difference between reactants  $\tau$ ; the product to fuel stoichiometric ratio  $\sigma$ ; the global equivalence ratio corresponding to a complete mixing between reactants in their initial state  $\phi$ ; and the stoichiometric factor  $s$ , defined respectively by

$$\chi = \frac{Q Y_{F,0}}{c_p T_{O,0}}, \quad \tau = \frac{T_{F,0} - T_{O,0}}{T_{O,0}}, \quad \sigma = \frac{\nu_P W_P}{\nu_F W_F}, \quad \phi = s \frac{Y_{F,0}}{Y_{O,0}}, \quad s = \frac{\nu_O W_O}{\nu_F W_F}, \quad (38)$$

one may define the following variables [76]:

$$Z_1 = \frac{\chi Y_F / Y_{F,0} + \tau \theta}{\chi + \tau}, \quad Z_2 = \frac{\chi Y_O / (\phi Y_{O,0}) - \chi / \phi + \tau \theta}{-\chi / \phi + \tau}, \quad Z_3 = \frac{-\chi Y_P / (\sigma Y_{F,0}) + \tau \theta}{\tau}, \quad (39)$$

where  $\theta$  is the reduced temperature given by

$$\theta = \frac{T - T_{O,0}}{T_{F,0} - T_{O,0}}. \quad (40)$$

This set of variables ( $Z_1, Z_2, Z_3$ ) are initially equal and follow the same balance equation without reaction term (like (3)) and with the same boundary conditions. They are therefore equal at each point and for all times to the same value  $Z$ . Introducing the same dimensionless variables previously defined in (26), we obtain a reduced system of equations of the form [76]:

$$\left. \begin{aligned} \partial_{t_*} Z + v_{x,*} \partial_{x_*} Z + v_{y,*} \partial_{y_*} Z - \left( \partial_{x_*}^2 Z + \partial_{y_*}^2 Z \right) &= 0, \\ \partial_{t_*} \theta + v_{x,*} \partial_{x_*} \theta + v_{y,*} \partial_{y_*} \theta - \left( \partial_{x_*}^2 \theta + \partial_{y_*}^2 \theta \right) &= F(Z, \theta), \end{aligned} \right\} \quad (41)$$

with

$$F(Z, \theta) = \text{Da} \phi \chi Y_{O,0} \left[ \frac{1-Z}{\phi \tau} + \frac{1}{\chi} (Z - \theta) \right] \left[ Z + \frac{\tau}{\chi} (Z - \theta) \right] e^{(-\tau_a / (1 + \tau \theta))}, \quad (42)$$

where  $\tau_a = T_a / T_{O,0}$  is the reduced activation temperature and with the Damköhler number defined by  $\text{Da} = \rho A \tau_d$ .

## 5.2. Numerical simulations

We consider a two-dimensional computational domain with initially separated fresh fuel and hot air. A single vortex modeled by (28) constitute the velocity field imposed to the system.

### 5.2.1. Data initialization and simulation parameters

We consider the numerical solution of (41)-(42) with Neumann homogeneous boundary conditions in a dimensionless domain of  $[-1, 1]^2$ , i.e.,  $L = 1$ . The initial condition is given by

$$Z(x_\star, y_\star) = \theta(x_\star, y_\star) = \frac{1}{2} [1 + \tanh(\alpha(y_\star - y_{0,\star}))], \quad (43)$$

where  $\alpha = 200$ . Notice that according to (39) and (40),  $Z(x_\star, y_\star) = \theta(x_\star, y_\star) = 1$  in the upper half-plane for the fresh fuel, and  $Z(x_\star, y_\star) = \theta(x_\star, y_\star) = 0$  in the lower part for the hot air. Therefore, considering the time dependent equation for  $Z$  in (41),  $Z$  must be included into  $[0, 1]$  at any time. Additionally,  $\theta \leq 1$  according to (40). The initial mass fractions and temperatures of the gases are given by  $Y_{F,0} = 1$ ,  $Y_{O,0} = 0.23$ ,  $T_{F,0} = 300$  K, and  $T_{O,0}$ . The following values define the characteristic parameters (38) for the evaluation of the reaction rate (42) and the velocity field (28):  $Q/c_p = 5 \times 10^4$  K,  $s = 8$ ,  $Da = 1.65 \times 10^7$ ,  $T_a = 8000$  K,  $Sc = 1$ , and  $Re$ . The velocity field is given by the vortex rotating in the counter-clockwise direction, defined by (30) and centered at  $(0, 0)$ . We thus take  $y_{0,\star} = 0$  into (43). In the following computations we will consider different values of the vortex Reynolds number  $Re$  and the air temperature  $T_{O,0}$  in order to characterize different physical scenarios according to [76].

Regarding the numerical strategy and unless otherwise noted the adaptive splitting accuracy tolerance in (9) is set to  $\eta = 10^{-3}$ , with  $\eta_{ROCK4} = 10^{-5}$ ,  $\eta_{Radau5} = 10^{-7}$ , and the third order OSMP scheme with a stability CFL condition equal to 1. As in the previous computations and after some preliminary runs, we consider the same constant shift parameter  $\delta$ , equal to 0.05, for the lower order Strang scheme (8) and the growth limiting procedure for splitting time steps given by (33). The grid adaptation was performed with  $\varepsilon = 10^{-3}$ , unless otherwise noted, for a finest grid corresponding to a spatial discretization of  $1024^2$  points, i.e.,  $J = 10$  as finest grid level.

### 5.2.2. Three different ignition dynamics

In this part we reproduce some of the computations performed in [76] with the proposed numerical strategy. The main goal of this example is to evaluate the capabilities of the time-space adaptive scheme to simulate different physical scenarios by means of a qualitative comparison with previous results in [76].

Thévenin & Candel considered a standard alternate direction implicit technique [78] with dynamic time stepping ruled by both an advective and a chemical time step limitation such that the increase of the local product mass fraction is restricted to 1 % over one time step. Very small time steps were thus required during thermal runaway and the propagation phase for a space discretization typically of  $500^2$  points [76]. In their paper these authors identified and described three different configurations with their corresponding ignition dynamics. Taking into account the various inputs of the model, two parameters were chosen and varied in the computations to switch from one regime to another: the vortex Reynolds number  $Re$  and the air temperature  $T_{O,0}$ . The upper half-plane is initially occupied by fresh fuel at  $T_{F,0} = 300$  K, whereas the remaining lower half contains hot air at  $T_{O,0}$ . The counter-clockwise rotating vortex (30) centered on the planar interface is introduced immediately at  $t_\star = 0$ . The resulting forced convection superposes to the diffusive mechanisms and accelerates the mixture of the gases. As a consequence, a diffusion flame ignites along the contact surface of both media. Additionally the velocity field entrains initially fresh gases into the vortex core which reacts with an intensity set by the mixing temperature of gases of about  $(T_{F,0} + T_{O,0})/2$ . The complete behavior is clearly a function of the initial reactants configuration and of the imposed velocity field, as studied in detail in [76].



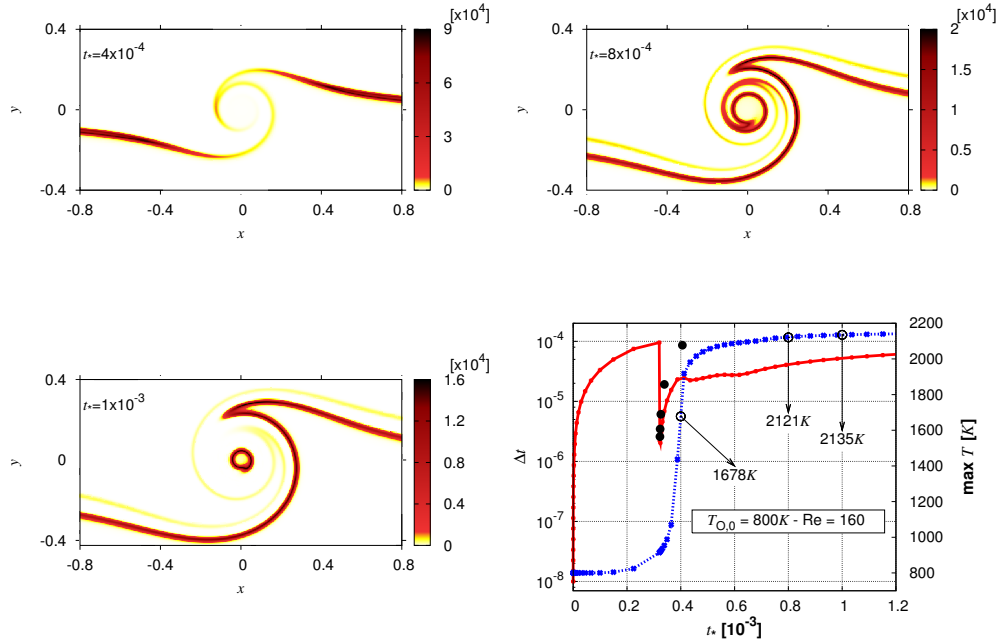


Figure 6: Two-dimensional flame ignition in a vortex field. Instantaneous heat release rate  $F$  at  $t_{\star} = 4 \times 10^{-4}$  (top left),  $8 \times 10^{-4}$  (top right), and  $10^{-3}$  (bottom left). Diffusion ignition mode for a moderate air temperature  $T_{O,0}$  of 800 K and vortex Reynolds number  $Re$  of 160. Bottom right: time evolution of splitting time steps and maximum temperature  $T$ , deduced from  $\theta$ . Rejected time steps are indicated with black bullets ( $\bullet$ ) while maximum temperatures for previous snapshots are marked with ( $\circ$ ).

The first configuration illustrated in Figure 6 corresponds to an ignition process with moderate air temperatures, that is  $T_{O,0}$  less than 1000 K. In particular  $T_{O,0}$  was set to 800 K in these computations with a vortex Reynolds number  $Re$  of 160. Instantaneous values of the heat release  $F$  given by (42) are shown in Figure 6. Note that the scale changes in each snapshot in order to get a better representation of the flame structure. The hot air temperature is enough to favor the ignition of a diffusion flame along the braids, after a long but finite time. Some time after, a diffusion flame is also ignited near the central vortex core and progressively consumes it in a completely independent way of the burning process in the braids. Two well-separated flames are hence generated. For this configuration the central core is characterized by well mixed gases and the resulting mixture temperature is low such that the ignition delay is quasi-infinite. This burning dynamics corresponds to a diffusion ignition mode. These results suitably reproduce the dynamics described in [76], even for the corresponding maximum heat release. Figure 6 shows also the dynamic variation of the splitting time step  $\Delta t$  for the given accuracy tolerance of  $\eta = 10^{-3}$  according to the physics of the problem, illustrated in this example by the thermal runaway and the rejection of the corresponding splitting time steps. The maximum temperature ( $\max T$ ) is derived out of  $\theta$  into (40). More precise analyses on the performance of the method will be conducted in a particular configuration in the next section. This simulation takes approx-

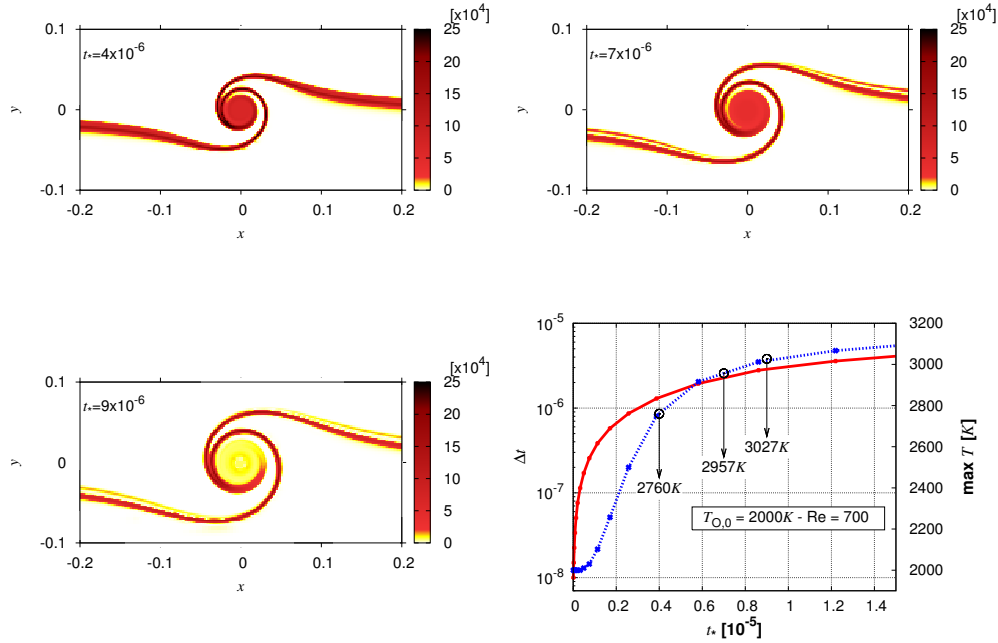


Figure 7: Two-dimensional flame ignition in a vortex field. Instantaneous heat release rate  $F$  at  $t_\star = 4 \times 10^{-6}$  (top left),  $7 \times 10^{-6}$  (top right), and  $9 \times 10^{-6}$  (bottom left). Premixed ignition mode for a high air temperature  $T_{O,0}$  of 2000 K and vortex Reynolds number  $Re$  of 700. Bottom right: time evolution of splitting time steps and maximum temperature  $T$ , deduced from  $\theta$ . Maximum temperatures for previous snapshots are marked with circles ( $\circ$ ).

imately 10 minutes of CPU time for  $t_\star$  up to  $10^{-3}$ .

Figure 7 illustrates a configuration with an air temperature  $T_{O,0}$  of 2000 K and a vortex Reynolds number  $Re$  of 700, following the second example in [76]. This case describes an ignition process for a higher air temperature, characterized by a quick self-ignition of the vortex center resulting in a premixed flame that propagates outwards from the center. A diffusion flame is independently developed in the braids together with a premixed flame on the fuel side of the domain, close to the diffusion flame layer. As studied in [76], this configuration corresponds to the premixed ignition mode. Once again these computations qualitatively reproduce previous results but with higher values of heat release. This is a direct consequence of the finer spatial resolution used in the present computations that yields better discrete representations of the highly nonlinear function  $F$ . In the present illustration a shorter distance can be observed between both diffusion and premixed flames in the braids. Additional runs demonstrated that this distance is related to the initial solution (43) by means of the  $\alpha$  parameter, which is very likely not the same in both computations<sup>4</sup>. Note that thermal runaway is almost instantaneous for high temperatures and takes place during the transient phase associated to the initial highly increasing velocity field,

<sup>4</sup>Smaller values of  $\alpha$  imply larger distances between flames without significant alteration of the dynamics of the vortex center. Computations in [76] seem to consider  $\alpha$  equal to 100 for this case.

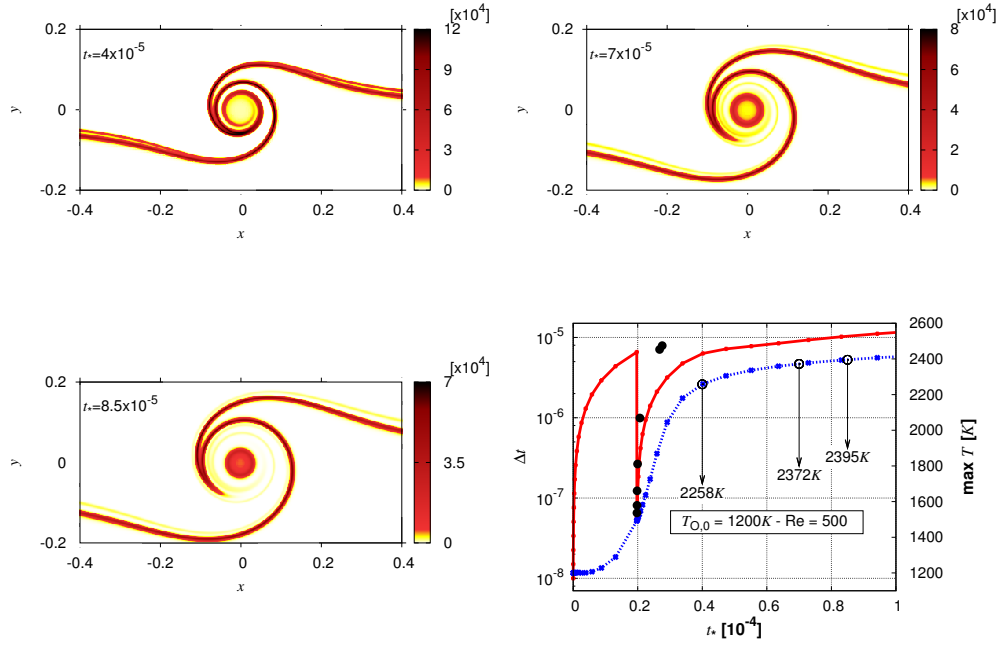


Figure 8: Two-dimensional flame ignition in a vortex field. Instantaneous heat release rate  $F$  at  $t_{\star} = 4 \times 10^{-5}$  (top left),  $7 \times 10^{-5}$  (top right), and  $8.5 \times 10^{-5}$  (bottom left). Mixed ignition mode for an intermediate air temperature  $T_{O,0}$  of 1200 K and vortex Reynolds number  $Re$  of 500. Bottom right: time evolution of splitting time steps and maximum temperature  $T$ , deduced from  $\theta$ . Rejected time steps are indicated with black bullets ( $\bullet$ ) while maximum temperatures for previous snapshots are marked with ( $\circ$ ).

and consequently to sufficiently small splitting time steps. This simulation takes approximately 1 minute of CPU time for  $t_{\star}$  up to  $10^{-5}$ .

Finally, Figure 8 illustrates the third and last case corresponding to an intermediate air temperature  $T_{O,0}$  of 1200 K and vortex Reynolds number  $Re$  of 500. A mixed ignition regime is observed in this configuration in which the diffusion flame in the braids is ignited before the vortex core. The mixture in the core eventually burns and is progressively consumed by both types of flames: from the outer edge by the diffusion flame originated from the braids as in the first case, and outwards by the self-ignition of the well mixed core as in the second case. Results in [76] are well retrieved but with an improved representation of the heat release distribution. Note that scales of heat release rate change in each snapshot for better visualization. Thermal runaway takes place after the initial vortex transient as in the first case, and the simulation takes approximately 4 minutes of CPU time for  $t_{\star}$  up to  $10^{-4}$ . Notice that all of these computations were performed in a very small amount of CPU time, thanks to the time-space adaptive capabilities of the method as we shall see in the following section, and hence exhaustive parametric studies could be easily conducted for different applications. Further interpretations of the various regimes of ignition and resulting configurations can be found in [76].

### 5.2.3. Characterization of numerical errors and performance of the method

In the previous section the ignition dynamics was briefly described from a purely physical point of view for different configurations in order to establish qualitative comparisons with previous results. In this part we are interested in evaluating the efficiency of the present method in a more quantitative way and in particular throughout the fast transition phase, numerically the most difficult part of the problem, contrary to the previous situation in Figures 6, 7, and 8 where the study was carried out practically after the thermal runaway process.

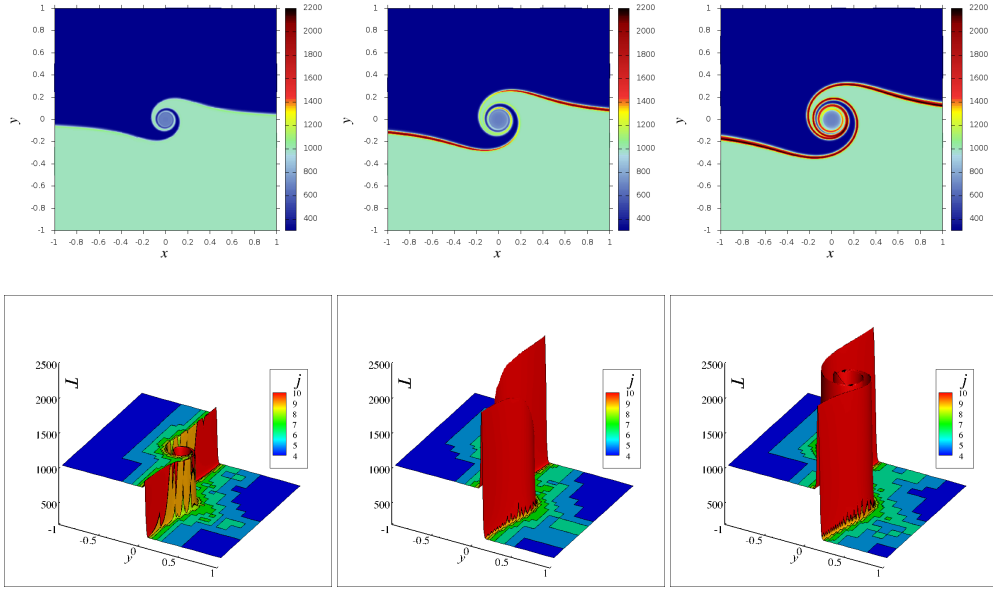


Figure 9: Two-dimensional flame ignition in a vortex field. Time evolution of temperature  $T$  at  $t_\star = 5 \times 10^{-5}$  (right),  $10^{-4}$  (center), and  $1.5 \times 10^{-4}$  (left). Initial temperature of the fresh fuel:  $T_{F,0} = 300$  K, and of the hot air:  $T_{O,0} = 1000$  K. Bottom: dynamic adapted grid corresponding to  $1024^2$  points at the finest level  $J = 10$  with  $\varepsilon = 10^{-3}$ .

We consider in this section fresh fuel initially at  $T_{F,0}$  equal to 300 K and hot air at a temperature  $T_{O,0}$  of 1000 K, corresponding to the third and last ignition mode for intermediate air temperatures, but with a higher vortex Reynolds number  $Re$  of 1000. By decreasing the air temperature we aim at shifting the sudden change in physics observed in Figure 8 and certainly not known at the start of the calculation, away from the initial transient behavior and corresponding small splitting time steps as seen in Figure 7. Beyond the inherent stiffness of the governing equations, a higher Reynolds number also imposes more severe convective conditions. In this way the chosen configuration qualitatively reproduces the physics encountered in the previous part but under numerically tougher constraints. Figure 9 (top) illustrates the thermal runaway during the ignition process. Temperatures are displayed at times  $t_\star$  of  $5 \times 10^{-5}$ ,  $10^{-4}$ , and  $1.5 \times 10^{-4}$ , for which the maximum temperature is given, respectively, by approximately 1094 K, 2108 K, and 2209 K. The corresponding adapted grids are also shown in Figure 9 (bottom) for a more illustrative three-dimensional representation of the temperature. We have verified that the mixture transverse size and the corresponding flame thickness are of the order of 0.025, similar to the

previous propagating case. A spatial discretization of  $1024^2$  points is thus reasonably accurate. Figure 9 (bottom) shows that the finest regions dynamically identify the local rise in temperature until ignition of the entire contact surface. In particular, the initial front does not require a full representation on the finest grid for a threshold tolerance of  $\varepsilon = 10^{-3}$  (see Figure 9 (bottom left)). The complete refinement of the front then takes place after ignition and subsequent formation of steeper gradients. One finds that for smaller threshold values the initial front itself lies within the finest grid, but it is interesting to retain the current configuration to illustrate a limit case.

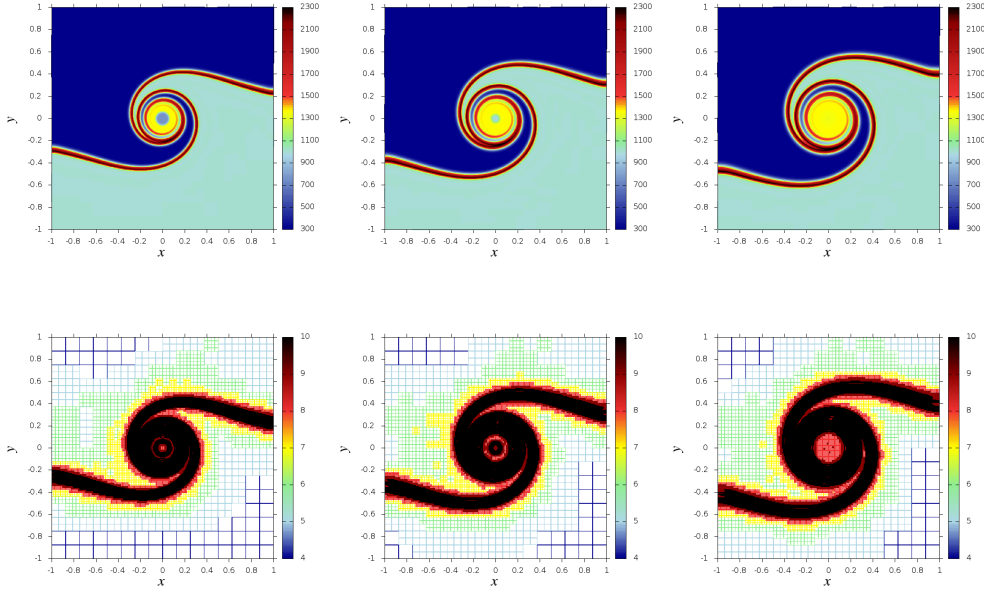


Figure 10: Two-dimensional flame ignition in a vortex field. Time evolution of temperature  $T$  (top) and corresponding adapted grid equivalent to  $1024^2$  points at the finest level  $J = 10$  with  $\varepsilon = 10^{-3}$  (bottom) at  $t_\star = 2.63 \times 10^{-4}$  (right),  $3.54 \times 10^{-4}$  (center), and  $4.59 \times 10^{-4}$  (left).

The complete consumption of the gas mixture at the vortex core is depicted in Figure 10 at times  $t_\star$  of  $2.63 \times 10^{-4}$ ,  $3.54 \times 10^{-4}$ , and  $4.59 \times 10^{-4}$ , with maximum temperatures of approximately 2274 K, 2295 K, and 2309 K, respectively. The adaptive meshes on which the solutions are computed, are also represented in Figure 10. Comparing with the dynamics encountered in Figure 8, it can be noticed that a higher vortex Reynolds number naturally favors a faster propagation of the diffusion flame close to the vortex center, whereas a lower air temperature results in a weaker reactive intensity of the premixed core. As a consequence the well mixed core is burnt much faster from its outer edge until full consumption of the fuel. All these features can be observed during the evolution of the heat release rate  $F$  in Figure 11, in which the heat release scale changes to better follow the flame dynamics.

From now on we focus on the time interval defined by  $t_\star$  and  $[0, 1.5 \times 10^{-4}]$ , which contains the physical transition from inert mixing to ignition of the reactants. Figure 12 illustrates the resulting time adaptation featured by the numerical strategy. As in the previous computations

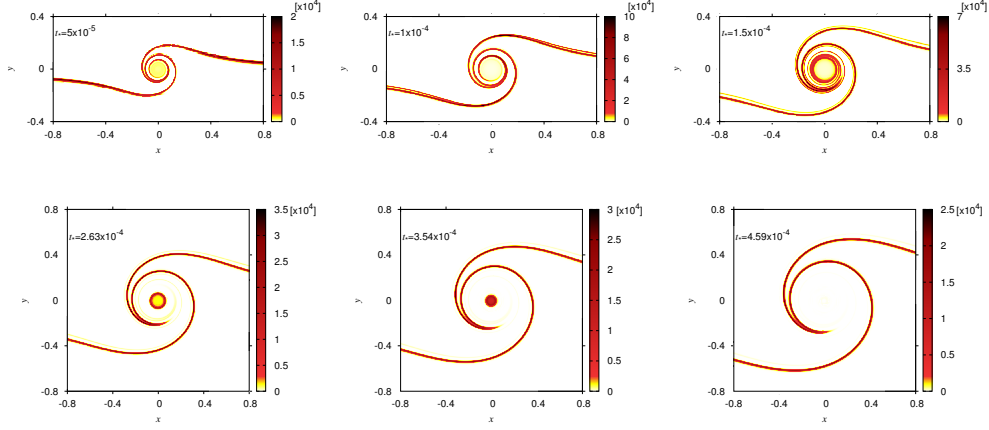


Figure 11: Two-dimensional flame ignition in a vortex field. Instantaneous heat release rate  $F$  at  $t_* = 5 \times 10^{-5}$ ,  $10^{-4}$ ,  $1.5 \times 10^{-4}$ ,  $2.63 \times 10^{-4}$ ,  $3.54 \times 10^{-4}$ , and  $4.59 \times 10^{-4}$ . Scale of  $F$  changes in each image for better representation. Ignition mode for an air temperature  $T_{O,0}$  of 1000 K and vortex Reynolds number  $Re$  of 1000.

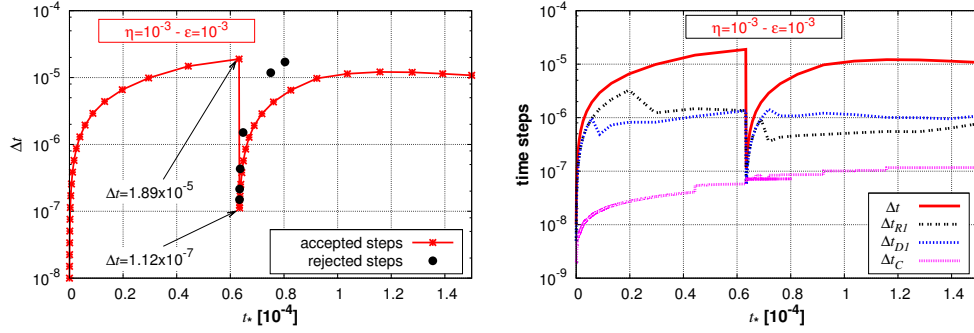


Figure 12: Two-dimensional flame ignition in a vortex field. Time adaptation is well apparent in the time evolution of splitting time steps  $\Delta t$  with accuracy tolerance  $\eta = 10^{-3}$  (left), as well as the reactive  $\Delta t_{RI}$  and diffusive  $\Delta t_{DI}$  substeps during the first splitting half-step, and the convective ones  $\Delta t_C$  in the Strang scheme (7) (right). Solutions were computed on a dynamically adapted grid corresponding to  $1024^2$  points at the finest level  $J = 10$  with  $\varepsilon = 10^{-3}$ .

in §4, an initial splitting time step of  $\Delta t = 10^{-8}$  with the growth limiting procedure (33) were considered to properly handle the inclusion of the vortex and the fast variation of the velocity field. The splitting step increases until  $t_* \approx 6.5 \times 10^{-5}$  ( $\Delta t \approx 1.89 \times 10^{-5}$ ) during the mixing phase, and one then finds a series of rejected steps for the given accuracy tolerance  $\eta$  of  $10^{-3}$ . The splitting time step is thus reduced down to the time scale needed to guarantee the prescribed accuracy:  $\Delta t \approx 1.12 \times 10^{-7}$ . This behavior naturally coincides with the sudden ignition of the flame and the subsequent fast propagation along the contact surface, once a certain temperature is locally reached after the initial mixing of reactants. A dynamic adaptation of the splitting time step is hence mandatory to identify these changes in the physical behavior of the phenomenon

and to suitably describe this process. As in the previous case in §4, a constant and relatively large  $\delta$ -shift in (8) is accurate enough, since strong variations in time stepping are associated to important time step reductions for which the theoretical framework of the adaptive splitting scheme is certainly valid [52]. Nevertheless, the dynamic evaluation of  $\delta$  would be required for more general configurations.

The resulting reaction, diffusion, and convection time integration steps for  $\eta = 10^{-3}$  are displayed in Figure 12 (right). Only the minimum reaction steps are represented which are of the order of  $\Delta t_R \approx 10^{-6}$  and  $\Delta t_R \approx 5 \times 10^{-7}$  at the flame front, respectively, before and after complete ignition of the flame. For each splitting time step the local reaction time steps progressively increase from the depicted values up to  $\Delta t_R = \Delta t/2$  for the points lying away from the highly reactive area. Diffusion time steps are of the order of  $\Delta t_D \approx 10^{-6}$ , whereas the convective step ranges from  $\Delta t_C \approx 10^{-9}$  in the beginning to  $\Delta t_C \approx 10^{-7}$ . Once again, the convection time step is the most constraining step considering the high Reynolds number value adopted in the present calculations.

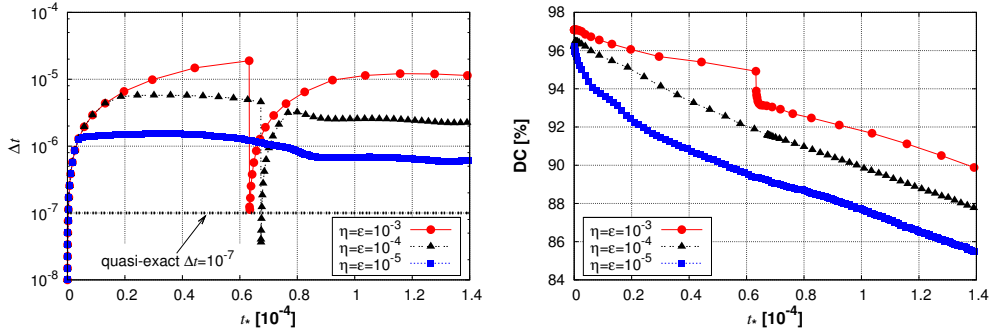


Figure 13: Two-dimensional flame ignition in a vortex field. Time and space adaptation given by the time evolution of splitting time steps  $\Delta t$  (left) and of data compressions DC (right) for several accuracy tolerances  $\eta$  and  $\varepsilon$ .

In what follows we investigate the accuracy and computational costs of the numerical approximations issued from the proposed adaptive method, as previously performed in §4. We thus consider again the quasi-exact and splitting solutions represented on a uniform grid of  $1024^2$  points, and computed with, respectively, a constant splitting time step  $\Delta t$  of  $10^{-7}$  and a splitting time stepping according to the  $\eta$  accuracy tolerance. Let us underline that the quasi-exact approximation is indeed a splitting one but with a sufficiently small time step such that all time scales are practically coupled (see, e.g., Figure 12) and the splitting errors are negligible. Alternatively the adaptive method was implemented with different splitting accuracy tolerances  $\eta$  of  $10^{-3}$ ,  $10^{-4}$ ,  $10^{-5}$ , and  $10^{-6}$ . In each case the multiresolution threshold value  $\varepsilon$  was taken equal to the corresponding  $\eta$  parameter, i.e.,  $\eta = \varepsilon$ , following previous results in §4<sup>5</sup>; we shall further discuss this choice later on. Figure 13 (left) illustrates the splitting time stepping for different  $\eta$  tolerances. No rejection of time steps is observed for  $\eta$  equal to  $10^{-5}$  or smaller, and several time steps in the transient phase coincide for different tolerances due to the limiting growth procedure (33). Time integration on a uniform grid yields essentially the same splitting time stepping observed in

<sup>5</sup>The configuration given by  $\eta = 10^{-3}$  and  $\varepsilon = 10^{-2}$  was briefly investigated in [77].

Figure 13. Additionally Figure 13 (right) illustrates the time evolution of data compressions DC. Recalling that time integration is performed on a constant adapted grid and that the remeshing period is set by the splitting time step, the dynamic evaluation of the splitting time step allows an adequate updating of the spatial representation and consequently the necessary refinement of the spatial configuration corresponding to the new physics of ignition. The latter is particularly observed for the case  $\varepsilon = 10^{-3}$ , a limit case for which the initial front is not fully represented on the finest grid, as previously remarked in Figure 9.

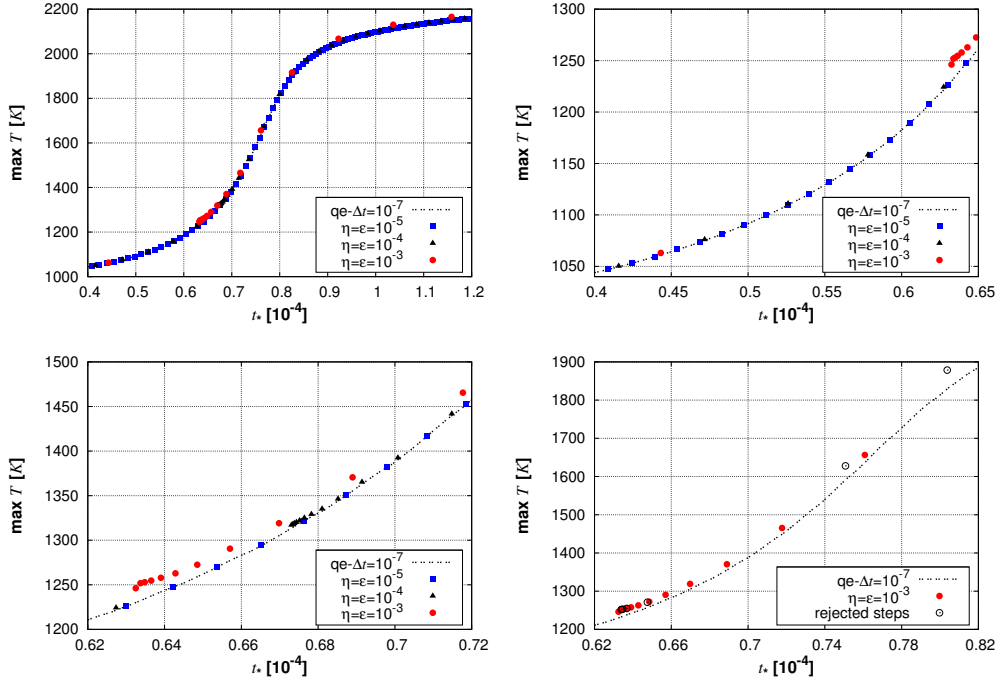


Figure 14: Two-dimensional flame ignition in a vortex field. Maximum temperature during a time interval of  $[0.4 \times 10^{-4}, 1.2 \times 10^{-4}]$  (top left),  $[0.4 \times 10^{-4}, 0.65 \times 10^{-4}]$  (top right), and  $[0.62 \times 10^{-4}, 0.72 \times 10^{-4}]$  (bottom left) for several accuracy tolerances  $\eta$  and  $\varepsilon$ . Bottom right: detail of accepted and rejected solutions for  $\eta = \varepsilon = 10^{-3}$ .

As an illustration of the numerical reproduction of the physical dynamics of the problem, let us consider the evolution of the maximum temperature. Notice that an increase of about 1000 K takes place during a time interval of  $4 \times 10^{-5}$ . Figure 14 (from top left to bottom right) illustrates this increase, approximated by the quasi-exact solution and the splitting ones with different accuracy tolerances. This accuracy parameter defines the splitting time steps and thus the permitted physical decoupling. Coarser tolerances involve thereby higher splitting errors and hence less accurate solutions, as observed, for instance, for the local maximum temperatures<sup>6</sup>. In particular it can be seen that large integration time steps can be afforded for stiff PDEs and yet guarantee

<sup>6</sup>Let us recall that the adaptive scheme does not consider errors on the maximum temperature into (33), but the  $L_2$ -norm of the estimated local error of the numerical solution, *err*.



solutions within an accuracy tolerance, as long as a robust adaptive method tracks the numerical errors. The latter situation is depicted in Figure 14 (bottom) for  $\eta = 10^{-3}$ , where relatively large splitting time steps eventually lead to solutions too distant, i.e., out of the tolerance range, from the right dynamics. Rejections are hence necessary to redirect the solution on the good track. Considering similarly the case  $\eta = 10^{-4}$  in Figure 13, a decrease of time steps is observed, sufficiently to cope with the initial ignition transients, but at a rate not enough to handle properly the whole thermal runaway process<sup>7</sup>. Rejections and re-computations are once again needed to avoid physically wrong solutions. It is therefore shown that even though the error estimates and consequently the rejected time steps cannot indicate a particular time in the physical transition of the problem, such as the ignition time of the flame, they are essential to detect the incapacity of the method to follow within a given tolerance the right dynamics of the problem when important physical changes are taking place.

Table 3:  $L^2$  numerical errors for the space adaptive multiresolution ( $E_{MR}^J$ ), time adaptive splitting ( $E_{split}^J$ ), and time-space adaptive ( $E_{split}^{MR}$ ) solutions evaluated at different times. Finest grid:  $1024^2$ .

	$\eta$	$\varepsilon$	$t_\star [10^{-4}]$	
			0.5	1.0
$E_{MR}^J$	–	$10^{-3}$	$1.87 \times 10^{-3}$	$3.54 \times 10^{-3}$
	–	$10^{-4}$	$3.32 \times 10^{-3}$	$3.24 \times 10^{-3}$
	–	$10^{-5}$	$1.86 \times 10^{-4}$	$1.51 \times 10^{-4}$
	–	$10^{-6}$	$4.22 \times 10^{-6}$	$3.49 \times 10^{-6}$
$E_{split}^J$	$10^{-3}$	–	$4.03 \times 10^{-4}$	$1.38 \times 10^{-3}$
	$10^{-4}$	–	$2.03 \times 10^{-4}$	$3.09 \times 10^{-4}$
	$10^{-5}$	–	$1.55 \times 10^{-4}$	$8.87 \times 10^{-5}$
	$10^{-6}$	–	$1.12 \times 10^{-4}$	$2.24 \times 10^{-5}$
$E_{split}^{MR}$	$10^{-3}$	$10^{-3}$	$1.87 \times 10^{-3}$	$3.26 \times 10^{-3}$
	$10^{-4}$	$10^{-4}$	$3.32 \times 10^{-3}$	$3.26 \times 10^{-3}$
	$10^{-5}$	$10^{-5}$	$2.47 \times 10^{-4}$	$1.82 \times 10^{-4}$
	$10^{-6}$	$10^{-6}$	$1.12 \times 10^{-4}$	$2.41 \times 10^{-5}$

Multiresolution, splitting, and combined time-space adaptive approximation errors deduced from (35) are gathered in Table 3<sup>8</sup>, computed for variable  $\theta$  at two different times  $t_\star$ :  $5 \times 10^{-5}$  and  $10^{-4}$ , approximately before and after the main thermal runaway mechanism. It can be seen that multiresolution errors  $E_{MR}^J$  reproduce the dependence on the threshold value  $\varepsilon$  into (15),

<sup>7</sup>The *step size strategy with memory* [79] could be a better alternative to the standard formula (9), to allow faster reduction of time steps and therefore decrease the number of rejections, as considered, for instance, in Radau5 and ROCK4, and illustrated in [67]

<sup>8</sup>The values corresponding to the case  $\eta = \varepsilon = 10^{-3}$  are slightly different in [77], because in this study all  $L_2$ -norm errors are normalized by  $(\max \theta - \min \theta)$ , as it is done in the numerical code, taking into account that  $\theta \leq 1$  and can be negative according to (40).

where a relatively larger constant  $C$  of  $O(10)$  can be noticed for  $\varepsilon = 10^{-4}$  and  $10^{-5}$ . Additionally, splitting errors  $E_{split}^J$  are effectively controlled by the local error accuracy  $\eta$ , except for  $t_\star = 5 \times 10^{-5}$  where an apparently constant error is maintained, very likely associated to the numerical initialization of the problem. Finally the global error of the method  $E_{split}^{MR}$  is shown to be composed of both multiresolution and splitting errors as established in (16)<sup>9</sup>. In general we expect that same values for both tolerances  $\eta$  and  $\varepsilon$  involve errors of the same order and an effective control of the global error, sum of all numerical approximations. Nevertheless, since local time integration errors, controlled by  $\eta$ , accumulate in time and on the other hand the multiresolution transform for a given  $\varepsilon$  is performed at each time iteration on the current solution, we could also expect that the former errors will eventually pilot the global one in (16), as seen previously in §4 for long time integration domains and in Table 3 for  $\eta = \varepsilon = 10^{-6}$ . To conclude, one key point is that the compressed spatial representations must be accurate enough to guarantee a reliable numerical solution of the time dependent problem, taking into account that the time integration is performed on a fixed adapted grid during each time step. One simple way of enforcing this behavior considers threshold values  $\varepsilon$  smaller than  $\eta$ , and at most equal-valued tolerances, as illustrated in this study.

Table 4: CPU time in minutes for the time-space adaptive, the time adaptive splitting, and the quasi-exact strategies for  $t_\star$  into  $[0, 1.5 \times 10^{-4}]$  and several accuracy tolerances  $\eta$  and  $\varepsilon$ . Finest grid:  $1024^2$ .

	$\eta$	$\varepsilon$	CPU time (min.)
$\mathbf{U}_{split}^{MR}$	$10^{-3}$	$10^{-3}$	8.93
	$10^{-4}$	$10^{-4}$	16.52
	$10^{-5}$	$10^{-5}$	34.68
	$10^{-6}$	$10^{-6}$	131.91
$\mathbf{U}_{split}^J$	$10^{-3}$	–	207.52
	$10^{-4}$	–	196.47
	$10^{-5}$	–	225.95
	$10^{-6}$	–	480.22
$\mathbf{U}_{qe}^J$	–	–	674.69

Table 4 summarizes the CPU times in minutes for all previous numerical solutions considered in Table 3. Important gains in CPU time are achieved with the adaptive splitting technique, which are greatly improved by the time-space adaptive strategy. For instance, for a set of parameters  $\eta = 10^{-3}$  and  $\varepsilon = 10^{-3}$ , splitting adaptation implies a gain factor of about 3.25 with respect to the quasi-exact solution (from  $\mathbf{U}_{qe}^J$  to  $\mathbf{U}_{split}^J$  in Table 4), further increased to about 75 with both time and space adaptation (from  $\mathbf{U}_{qe}^J$  to  $\mathbf{U}_{split}^{MR}$ ). This global gain comes indeed from both adaptive procedures since a multiresolution solution with  $\varepsilon = 10^{-3}$  and constant splitting time step  $\Delta t$  of  $10^{-7}$  implies a factor of “only” 12 (this computation requires about 56.80 minutes of CPU time),

<sup>9</sup>Although this expression is demonstrated in practice, further studies are required to gain an insight into the interaction of these space and time approximation errors.

contrary to the factor of 23 observed in Table 4 from  $\mathbf{U}_{split}^J$  to  $\mathbf{U}_{split}^{MR}$ . (Notice that a quasi-exact solution with a time stepping defined by the strongest numerical restriction, in this case set by the stability of the convective scheme, yields even more expensive computations as can be inferred from Figure 12 (right).) Time reductions related to the multiresolution representation (from  $\mathbf{U}_{split}^J$  to  $\mathbf{U}_{split}^{MR}$ ) are consistent with those achieved by data compressions in Figure 13 (right), for example, about 95 %, 91 %, and 84 % for a threshold value  $\varepsilon$  of, respectively,  $10^{-3}$ ,  $10^{-4}$ , and  $10^{-5}$ . Conversely, gains related to splitting adaptation (from  $\mathbf{U}_{qe}^J$  to  $\mathbf{U}_{split}^J$ ) seem to be roughly the same in these computations for  $\eta$  equal to  $10^{-3}$ ,  $10^{-4}$ , or  $10^{-5}$ , which underlines the impact of the inner solvers like Radau5 or ROCK4 on the global performance of the time integration method. In this particular study all computing parameters of these solvers were set and maintained to their standard default values which in some cases unnecessarily increase the number of function evaluations, for instance, for Jacobian or spectral radius computations in Radau5 or ROCK4. Finally, it is important to point out that the global efficiency of the time-space method is certainly a problem dependent feature, that is nevertheless very likely to be high for strongly dynamic mechanisms and localized spatial structures, as illustrated in the present problem.

### 5.3. Other physical configurations

Let us conclude this study with a brief illustration of some other physical configurations for ignition of flames.

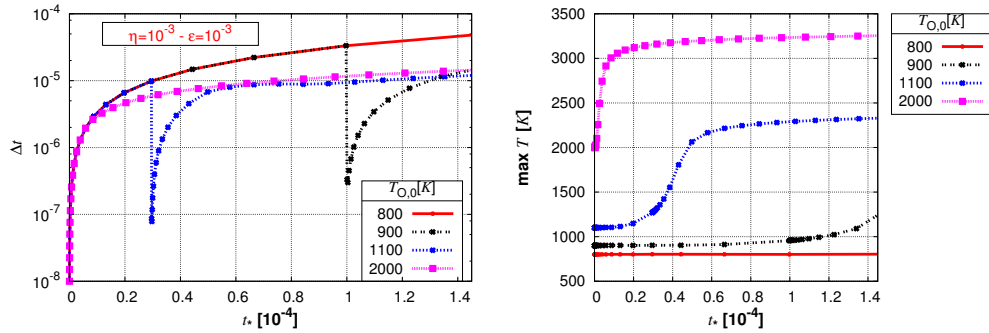


Figure 15: Two-dimensional flame ignition in a vortex field. Time evolution of the splitting time step  $\Delta t$  and of the maximum temperature for different initial temperatures of the hot air  $T_{O,0}$ ,  $T_{F,0}$  equal to 300 K, and vortex Reynolds number  $Re$  of 1000. Tolerances  $\eta = 10^{-3}$  and  $\varepsilon = 10^{-3}$ .

Figure 15 displays various scenarios with the same vortex field with Reynolds number  $Re$  of 1000, different initial temperatures of the air  $T_{O,0}$ , and the same temperature on the fuel side with  $T_{F,0}$  equal to 300 K. Each configuration involves different dynamics in terms of time scales and final temperatures as previously discussed in §5.2.2. It can be seen, for instance, that in the time window from  $t_* = 0$  to  $1.5 \times 10^{-4}$ , there is only mixing for  $T_{O,0}$  equal to 800 K, whereas for  $T_{O,0}$  larger than 1100 K ignition takes place during the initial transition phase of the splitting time step so that no step reduction is needed. From the numerical point of view the interesting cases are obviously those in which ignition occurs at some unknown intermediate time. In all cases one can see that the present adaptive scheme can handle all possible outcomes without preliminary information.

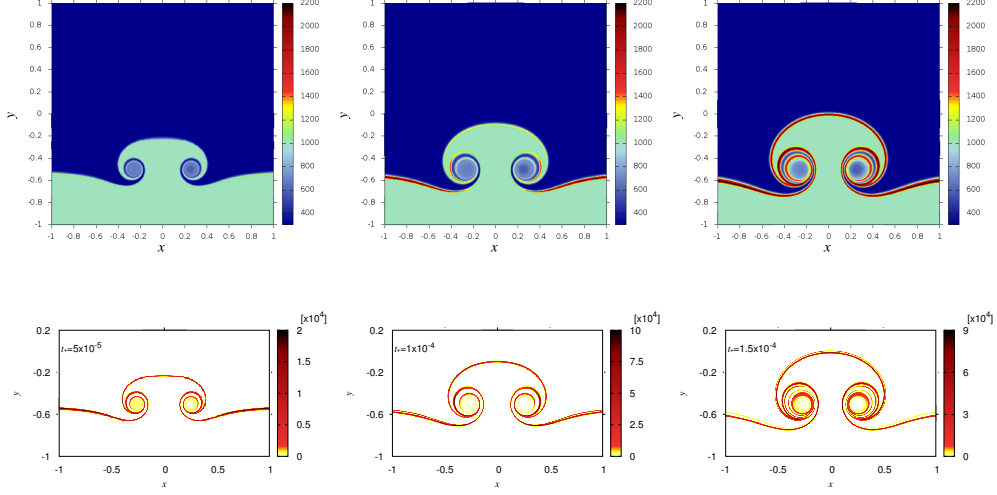


Figure 16: Two-dimensional flame ignition in a counter-rotating vortex pair field. Time evolution of temperature  $T$  (top) and heat release  $F$  (bottom) at  $t_\star = 5 \times 10^{-5}$  (left),  $10^{-4}$  (center), and  $1.5 \times 10^{-4}$  (right). Solutions were computed on a dynamic adapted grid corresponding to  $1024^2$  points at the finest level  $J = 10$  with  $\varepsilon = 10^{-3}$ . Ignition mode for an air temperature  $T_{O,0}$  of 1000 K and vortex Reynolds number  $Re$  of 1000.

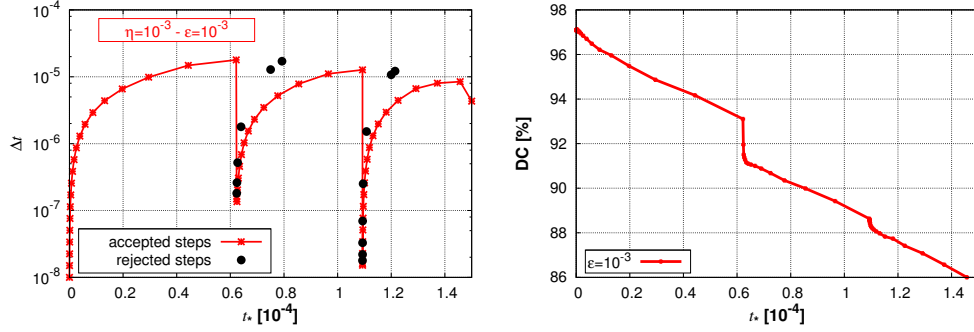


Figure 17: Two-dimensional flame ignition in a counter-rotating vortex pair field. Time and space adaptation revealed by the time evolution of splitting time steps  $\Delta t$  (left) and of data compressions  $DC$  (right), with accuracy tolerance  $\eta$  of  $10^{-3}$  and a threshold value  $\varepsilon$  equal to  $10^{-3}$ .

Let us now consider the case discussed in the previous section §5.2.3, that is fresh fuel with temperature  $T_{F,0}$  equal to 300 K, hot air at a temperature  $T_{O,0}$  of 1000 K, and vortex Reynolds number  $Re$  of 1000. The velocity field is given this time by the superposition of two vortices with opposite signs in (30), as in §4, centered at  $(-0.25, -0.5)$  for the counter-clockwise vortex, and at  $(0.25, -0.5)$  for the clockwise one. In this way the initial separation of both media is set by  $y_{0,\star} = -0.5$  into (43). Ignition dynamics is illustrated in Figure 16 for the temperature

distribution and heat release rate function  $F$ . For a splitting accuracy tolerance  $\eta$  of  $10^{-3}$  during the time integration and a threshold value  $\varepsilon$  equal to  $10^{-3}$  for the multiresolution analysis, Figure 17 shows the corresponding time and space adaptation given by the dynamic splitting time steps  $\Delta t$  and data compressions DC. Notice that for this particular physical configuration and the given tolerances, a double sequence of rejections takes place in order to properly describe the first ignition in the braids and the second one near the cores of the vortices. Once again it is shown that the present adaptive scheme can handle various physical configurations, and in the same way similar studies can be performed with other combinations of vortex fields and operating parameters.

## 6. Conclusion and perspective

Numerical results obtained with the present time-space adaptive technique support the conclusions that different multi-scale physical configurations can be successfully simulated and that the error can be effectively controlled. Important gains in computational efficiency are achieved because of highly compressed data representations, as well as a dynamic splitting technique with adequate solvers, independent time stepping procedures, and splitting time steps not restricted by stability constraints. It is shown that the adaptive splitting scheme is critical in handling fast transients, and that it allows to deal with the difficult problem of the sudden ignition of a flame in a vortex field, which features a variety of spatial and time scales and different regimes of flame initiation. This kind of multi-scale problem would become extremely expensive, if it were envisaged without these adaptive capabilities, at least with standard computational resources. Concerning error control features, the present numerical strategy is perfectly inscribed in a new solution scheme paradigm that aims at enhancing high fidelity numerical simulations with tools providing estimates “on the fly” of the quality of numerical results for general multi-dimensional configurations. The present scheme is such that for a given spatial discretization, the numerical accuracy of the simulations is set by two parameters:

- The threshold value  $\varepsilon$  of the multiresolution decomposition, which balances data compression and numerical errors related to compressed data representations;
- The accuracy tolerance  $\eta$  of the time splitting technique, which limits the degree of decoupling of the physical phenomena and hence, controls the numerical time integration errors.

This provides a solid basis for more detailed and complex numerical simulations. This is exemplified with preliminary results for models that include detailed chemical features, presented in [80] with parallelism tools for shared memory architectures. Extensions of the present numerical strategy to more complex models such as gas discharge problems were also achieved in [81]. In this context and with this background, one can envision the development of more powerful numerical solvers, for instance, a low Mach solver for reactive flows relying on the present time-space adaptive scheme. However, when dealing with complex kinetics systems chemistry, involving large numbers of species and reactions, the integration of the source term leads to important computational costs. This is so despite of the fact that it is embarrassingly parallel in the framework of operator splitting (as shown in [80]) and that computational requirements can be reduced by data compression resulting from the multiresolution analysis. This issue requires further studies in order to obtain high efficiency in terms of load balancing on parallel architectures and to better exploit current computational resources.

## References

- [1] T. Echekki, *Comp. Sci. Discovery* 2 (2009) 013001.
- [2] J. Chen, *Proc. Combust. Inst.* 33 (2011) 99–123.
- [3] Y. Shi, W. Green Jr., H.-W. Wong, O. Oluwole, *Combust. Flame* 158 (2011) 836–847.
- [4] T. Lu, C. Law, *Prog. Energy Combust. Sci.* 35 (2009) 192–215.
- [5] S. Pope, Z. Ren, *Flow Turb. Combust.* 82 (2009) 437–453.
- [6] S. Pope, *Combust. Theory Model.* 1 (1997) 41–63.
- [7] G. Ribert, M. Champion, O. Gicquel, N. Darabiha, D. Veynante, *Combust. Flame* 141 (2005) 271–280.
- [8] O. Colin, F. Ducros, D. Veynante, T. Poinso, *Phys. Fluids* 12 (2000) 1843–1863.
- [9] G. Staffelbach, J. Senoner, L. Gicquel, T. Poinso, in: J. P. *et al.* (Ed.), *High Performance Computing for Computational Science - VECPAR 2008*, volume 5336 of *Lect. Notes Comput. Sci.*, Springer Berlin Heidelberg, 2008, pp. 444–464.
- [10] M. Boileau, G. Staffelbach, B. Cuenot, T. Poinso, C. Bérat, *Combust. Flame* 154 (2008) 2–22.
- [11] S. Dworkin, J. Cooke, B. Bennett, B. Connelly, M. Long, M. Smooke, R. Hall, M. Colket, *Combust. Theory Model.* 13 (2009) 795–822.
- [12] R. Dobbins, M. Smooke, *Flow Turbul. Combust.* 85 (2010) 763–799.
- [13] M. Shoeybi, M. Svård, F. Ham, P. Moin, *J. Comput. Phys.* 229 (2010) 5944–5965.
- [14] S. Kadioglu, D. Knoll, R. Lowrie, R. Rauenzahn, *J. Comput. Phys.* 229 (2010) 8313–8332.
- [15] M. Singer, S. Pope, H. Najm, *Combust. Theory Model.* 10 (2006) 199–217.
- [16] Z. Ren, S. Pope, *J. Comput. Phys.* 227 (2008) 8165–8176.
- [17] M. Crouzeix, *Numer. Math.* 35 (1980) 257–276.
- [18] C. Kennedy, M. Carpenter, *Appl. Numer. Math.* 44 (2003).
- [19] J. Verwer, B. Sommeijer, *SIAM J. Sci. Comput.* 25 (2004) 1824–1835.
- [20] B. Chabaud, Q. Du, *J. Sci. Comput.* 51 (2012) 135–157.
- [21] D. Lanser, J. Verwer, *J. Comput. Appl. Math.* 111 (1999) 201–216.
- [22] G. Marchuk, *Appl. Math.* 13 (1968) 103–132.
- [23] G. Strang, *SIAM J. Numer. Anal.* 5 (1968) 506–517.
- [24] G. Goyal, P. Paul, H. Mukunda, S. Deshpande, *Combust. Sci. Technol.* 60 (1988) 167–189.
- [25] Y. D’Angelo, B. Larroutourou, *RAIRO Modél. Math. Anal. Numér.* 29 (1995) 259–301.
- [26] B. Yang, S. Pope, *Combust. Flame* 112 (1998) 16–32.
- [27] E. Oran, J. Boris, *Numerical Simulation of Reacting Flows*, Cambridge University Press, 2nd edition, 2001.
- [28] D. Schwer, P. Lu, W. Green, V. Semião, *Combust. Theory Model.* 7 (2003) 383–399.
- [29] M. Singer, S. Pope, *Combust. Theory Model.* 8 (2004) 361–383.
- [30] M. Singer, S. Pope, H. Najm, *Combust. Flame* 147 (2006) 150–162.
- [31] C. Safta, J. Ray, H. Najm, *J. Comput. Phys.* 229 (2010) 9299–9322.
- [32] O. Knio, H. Najm, P. Wyckoff, *J. Comput. Phys.* 154 (1999) 428–467.
- [33] H. Najm, O. Knio, *J. Sci. Comput.* 25 (2005) 263–287.
- [34] P. N. Brown, G. Byrne, A. Hindmarsh, *SIAM J. Sci. Stat. Comput.* 10 (1989) 1038–1051.
- [35] P. van der Houwen, B. Sommeijer, *Z. Angew. Math. Mech.* 60 (1980) 479–485.
- [36] J. Verwer, *Appl. Numer. Math.* 22 (1996) 359–379.
- [37] M. Day, J. Bell, *Combust. Theory Model.* 4 (2000) 535–556.
- [38] M. Berger, J. Oliger, *J. Comput. Phys.* 53 (1984) 484–512.
- [39] J. Bell, M. Berger, J. Saltzman, M. Welcome, *SIAM J. Sci. Comput.* 15 (1994) 127–138.
- [40] A. Almgren, J. Bell, P. Colella, L. Howell, M. Welcome, *J. Comput. Phys.* 142 (1998) 1–46.
- [41] R. Pember, L. Howell, J. Bell, P. Colella, W. Crutchfield, W. Fiveland, J. Jessee, *Combust. Sci. Technol.* 140 (1998) 123–168.
- [42] J. Bell, M. Day, J. Grcar, *Proc. Combust. Inst.* 29 (2002) 1987–1993.
- [43] J. Bell, M. Day, A. Almgren, M. Lijewski, C. Rendleman, R. Cheng, I. Shepherd, *J. Phys. Conf. Ser.* 46 (2006) 1.
- [44] J. Bell, M. Day, I. Shepherd, M. Johnson, R. Cheng, J. Grcar, V. Beckner, M. Lijewski, *Proc. Nat. Acad. Sci.* 1021 (2005) 10006–10011.
- [45] J. Bell, M. Day, J. Grcar, M. Lijewski, J. Driscoll, S. Filatyev, *Proc. Combust. Inst.* 31 (2007) 1299–1307.
- [46] M. Duarte, M. Massot, S. Descombes, C. Tenaud, T. Dumont, V. Louvet, F. Laurent, *SIAM J. Sci. Comput.* 34 (2012) A76–A104.
- [47] S. Descombes, M. Massot, *Numer. Math.* 97 (2004) 667–698.
- [48] S. Descombes, T. Dumont, V. Louvet, M. Massot, *Int. J. Comput. Math.* 84 (2007) 749–765.
- [49] A. Harten, *Comm. Pure Appl. Math.* 48 (1995) 1305–1342.
- [50] A. Cohen, S. Kaber, S. Müller, M. Postel, *Math. Comp.* 72 (2003) 183–225.

- [51] S. Müller, Adaptive Multiscale Schemes for Conservation Laws, volume 27 of *Lect. Notes Comput. Sci. Eng.*, Springer-Verlag, 2003.
- [52] S. Descombes, M. Duarte, T. Dumont, V. Louvet, M. Massot, *Confluentes Math.* 3 (2011) 413–443.
- [53] F. Marble, in: *Adv. in Aerospace Science*, Plenum Press, New York, 1985, pp. 395–413.
- [54] A. Karagozian, F. Marble, *Combust. Sci. Technol.* 45 (1986) 65–84.
- [55] B. Manda, A. Karagozian, *Combust. Sci. Technol.* 61 (1988) 101–119.
- [56] W. Roberts, J. Driscoll, *Combust. Flame* 87 (1991) 245–256.
- [57] P.-H. Renard, D. Thévenin, J.-C. Rolon, S. Candel, *Prog. Energy Combust. Sci.* 26 (2000) 225–282.
- [58] J. Driscoll, *Prog. Energy Combust. Sci.* 34 (2008) 91–134.
- [59] W. Roberts, J. Driscoll, M. Drake, L. Goss, *Combust. Flame* 94 (1993) 58–69.
- [60] J.-C. Rolon, F. Aguerre, S. Candel, *Combust. Flame* 100 (1995) 422–429.
- [61] C. Mueller, J. Driscoll, D. Sutkus, W. Roberts, M. Drake, M. Smooke, *Combust. Flame* 100 (1995) 323–331.
- [62] D. Thévenin, J.-C. Rolon, P.-H. Renard, D. Kendrick, D. Veynante, S. Candel, *Proc. Combust. Inst.* 26 (1996) 1079–1086.
- [63] C. Mueller, J. Driscoll, D. Reuss, M. Drake, M. Rosalik, *Combust. Flame* 112 (1998) 342–358.
- [64] P.-H. Renard, J.-C. Rolon, D. Thévenin, S. Candel, *Combust. Flame* 117 (1999) 189–205.
- [65] B. Cetegen, S. Basu, *Combust. Flame* 146 (2006) 687–697.
- [66] D. Hartmann, M. Meinke, W. Schröder, *Combust. Flame* 158 (2011) 1318–1339.
- [67] E. Hairer, G. Wanner, *Solving Ordinary Differential Equations II*, Springer-Verlag, Berlin, 2nd edition, 1996. *Stiff and Differential-Algebraic Problems*.
- [68] A. Abdulle, *SIAM J. Sci. Comput.* 23 (2002) 2041–2054.
- [69] V. Daru, C. Tenaud, *J. Comput. Phys.* 193 (2004) 563–594.
- [70] A. Hindmarsh, *SIGNUM Newsl.* 15 (1980) 10–11.
- [71] M. Valorani, D. Goussis, *J. Comput. Phys.* 169 (2001) 44–79.
- [72] O. Roussel, K. Schneider, A. Tsigulin, H. Bockhorn, *J. Comput. Phys.* 188 (2003) 493–523.
- [73] R. Bürger, R. Ruiz-Baier, K. Schneider, *J. Sci. Comput.* 43 (2010) 261–290.
- [74] A. Laverdant, S. Candel, *J. Propulsion Power* 5 (1989) 134–143.
- [75] M. Duarte, M. Massot, S. Descombes, T. Dumont, in: J. F. *et al.* (Ed.), *FVCA VI Problems & Perspectives*, volume 4, Springer Berlin Heidelberg, 2011, pp. 379–387.
- [76] D. Thévenin, S. Candel, *Phys. Fluids* 7 (1995) 434–445.
- [77] M. Duarte, M. Massot, S. Descombes, C. Tenaud, S. Candel, in: *Ann. Res. Briefs 2011*, Center for Turbulence Research, Stanford University, 2012, pp. 347–358.
- [78] R. Peyret, T. Taylor, *Computational Methods for Fluid Flow*, Springer-Verlag, Berlin, 1983.
- [79] K. Gustafsson, *ACM Trans. Math. Softw.* 20 (1994) 496–517.
- [80] M. Duarte, M. Massot, S. Descombes, C. Tenaud, T. Dumont, V. Louvet, F. Laurent, *ESAIM: Proc.* 34 (2011) 277–290.
- [81] M. Duarte, Z. Bonaventura, M. Massot, A. Bourdon, S. Descombes, T. Dumont, *J. Comput. Phys.* 231 (2012) 1002–1019.